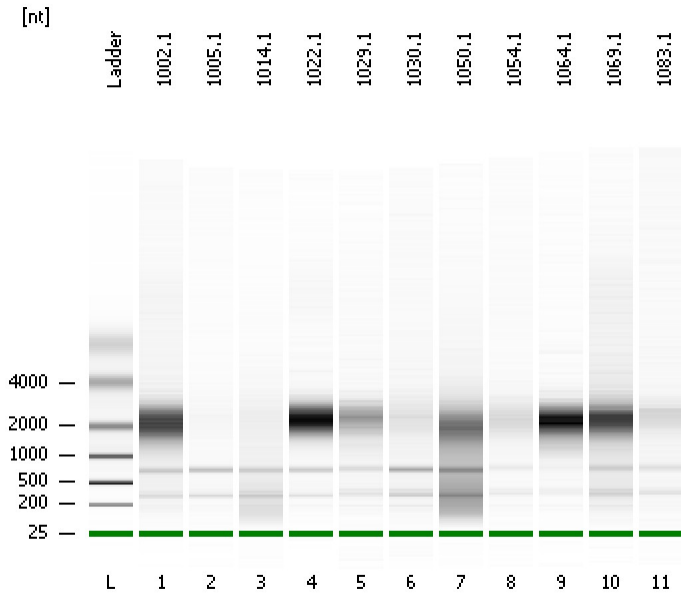


Assay Class: mRNA Pico  
Data Path: C:\...ents and Settings\Bioanalyzer\2015-07-31\2015-07-31\_002.xad

Created: 7/31/2015 10:06:54 AM  
Modified: 7/31/2015 1:43:51 PM

### Electrophoresis File Run Summary



#### Instrument Information:

Instrument Name: DE13701086      Firmware: C.01.069  
Serial#: DE13701086      Type: G2938B

#### Assay Information:

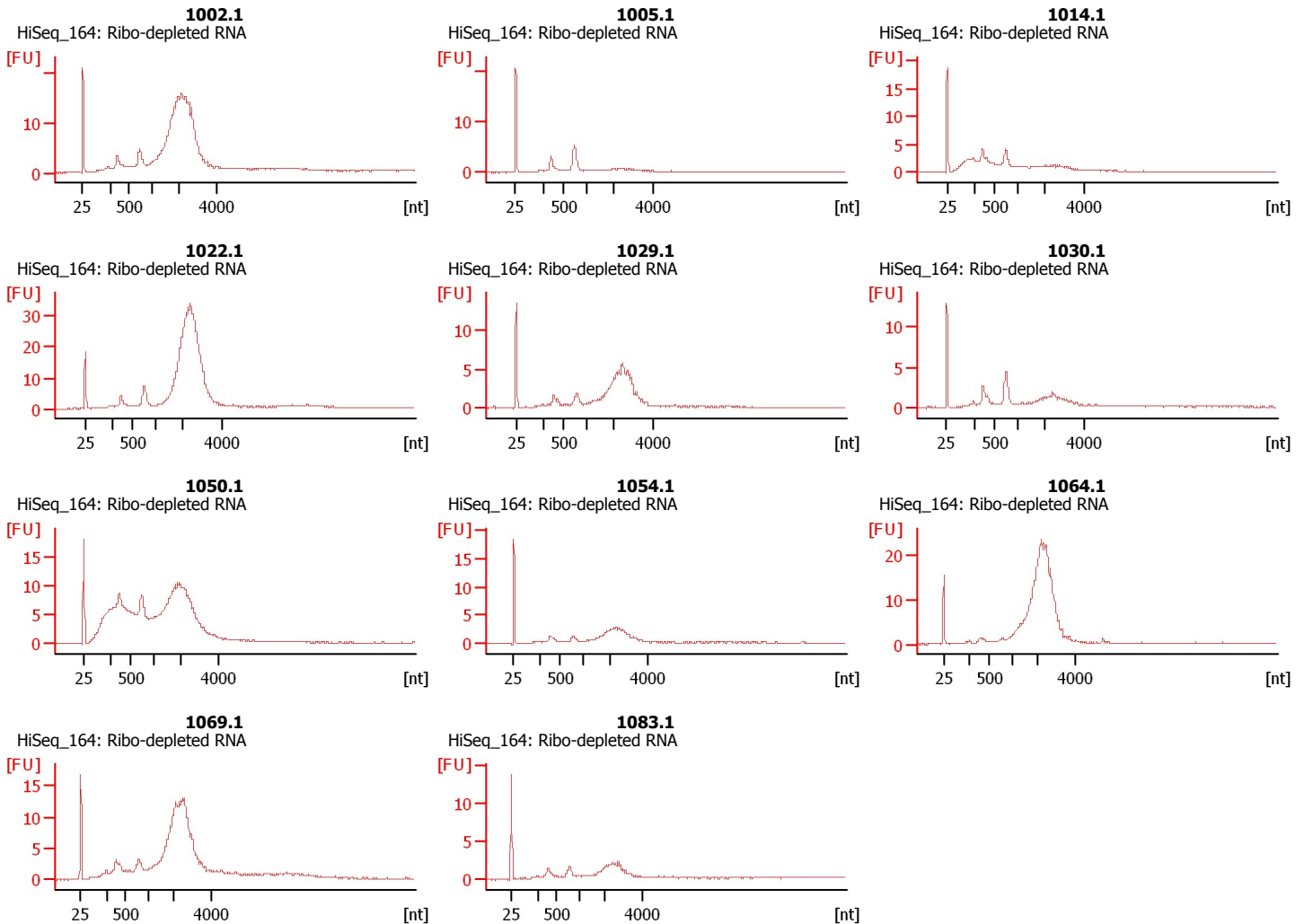
Assay Origin Path: C:\Program Files\Agilent\2100 bioanalyzer\2100 expert\assays\RNA\mRNA Pico Series II.xsy

Assay Class: mRNA Pico  
Version: 2.6  
Assay Comments: mRNA Analysis pg sensitivity

© Copyright 2003 - 2009 Agilent Technologies, Inc.

#### Chip Information:

Chip Lot #:      Reagent Kit Lot #:      Chip Comments:



Assay Class: mRNA Pico  
Data Path: C:\...ents and Settings\Bioanalyzer\2015-07-31\2015-07-31\_002.xad

Created: 7/31/2015 10:06:54 AM  
Modified: 7/31/2015 1:43:51 PM

**Electrophoresis File Run Summary (Chip Summary)**

Sample Name	Sample Comment	Status	Result Label	Result Color
1002.1	HiSeq_164: Ribo-depleted RNA	✓		
1005.1	HiSeq_164: Ribo-depleted RNA	✓		
1014.1	HiSeq_164: Ribo-depleted RNA	✓		
1022.1	HiSeq_164: Ribo-depleted RNA	✓		
1029.1	HiSeq_164: Ribo-depleted RNA	✓		
1030.1	HiSeq_164: Ribo-depleted RNA	✓		
1050.1	HiSeq_164: Ribo-depleted RNA	✓		
1054.1	HiSeq_164: Ribo-depleted RNA	✓		
1064.1	HiSeq_164: Ribo-depleted RNA	✓		
1069.1	HiSeq_164: Ribo-depleted RNA	✓		
1083.1	HiSeq_164: Ribo-depleted RNA	✓		
Ladder		✓		

**Chip Lot #****Reagent Kit Lot #****Chip Comments :**

Assay Class: mRNA Pico  
Data Path: C:\...ents and Settings\Bioanalyzer\2015-07-31\2015-07-31\_002.xad

Created: 7/31/2015 10:06:54 AM  
Modified: 7/31/2015 1:43:51 PM

**Electrophoresis Assay Details**

**General Analysis Settings**

Number of Available Sample and Ladder Wells (Max.) : 12  
Minimum Visible Range [s] : 14  
Maximum Visible Range [s] : 85  
Start Analysis Time Range [s] : 15  
End Analysis Time Range [s] : 84  
Ladder Concentration [pg/μl] : 1000  
Lower Marker Concentration [pg/μl] : 0  
Upper Marker Concentration [pg/μl] : 0  
Used Lower Marker for Quantitation  
Standard Curve Fit is Logarithmic  
Show Data Aligned to Lower Marker

**Integrator Settings**

Integration Start Time [s] : 15  
Integration End Time [s] : 84  
Slope Threshold : 0.2  
Height Threshold [FU] : 0.5  
Area Threshold : 0.1  
Width Threshold [s] : 0.2  
Baseline Plateau [s] : 0.5

**Filter Settings**

Filter Width [s] : 0.5  
Polynomial Order : 4

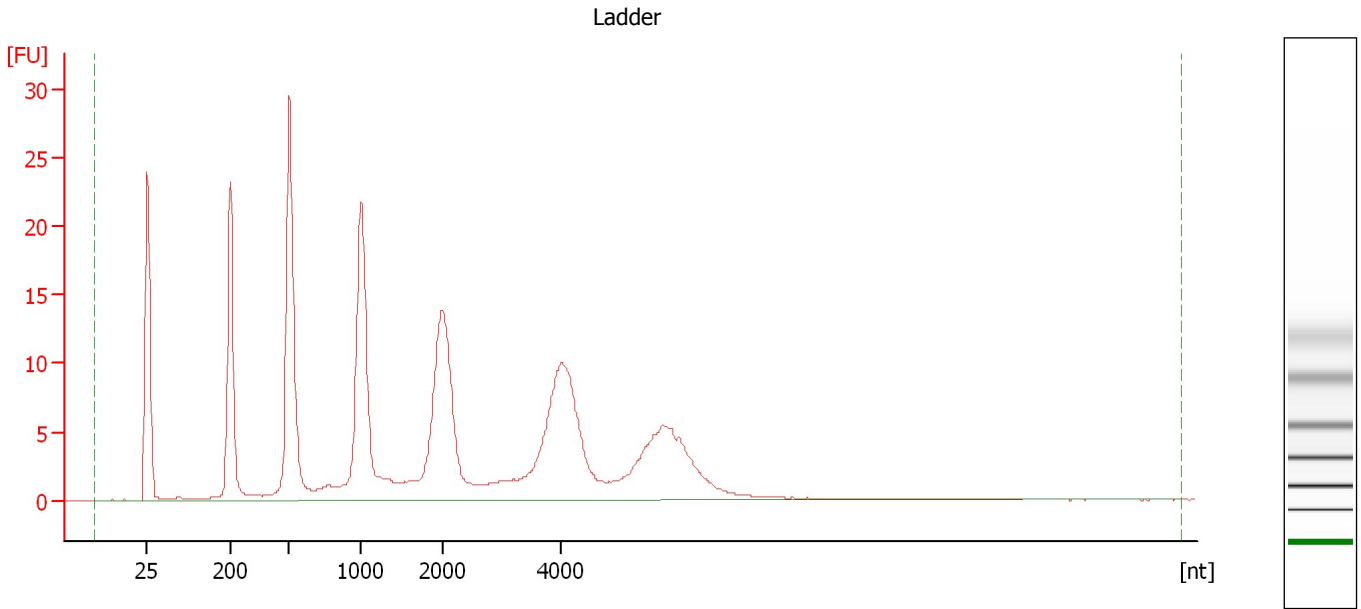
**Ladder**

Ladder Peak	Size
1	25
2	200
3	500
4	1000
5	2000
6	4000

Assay Class: mRNA Pico  
Data Path: C:\...ents and Settings\Bioanalyzer\2015-07-31\2015-07-31\_002.xad

Created: 7/31/2015 10:06:54 AM  
Modified: 7/31/2015 1:43:51 PM

**Electropherogram Summary**



**Overall Results for Ladder**

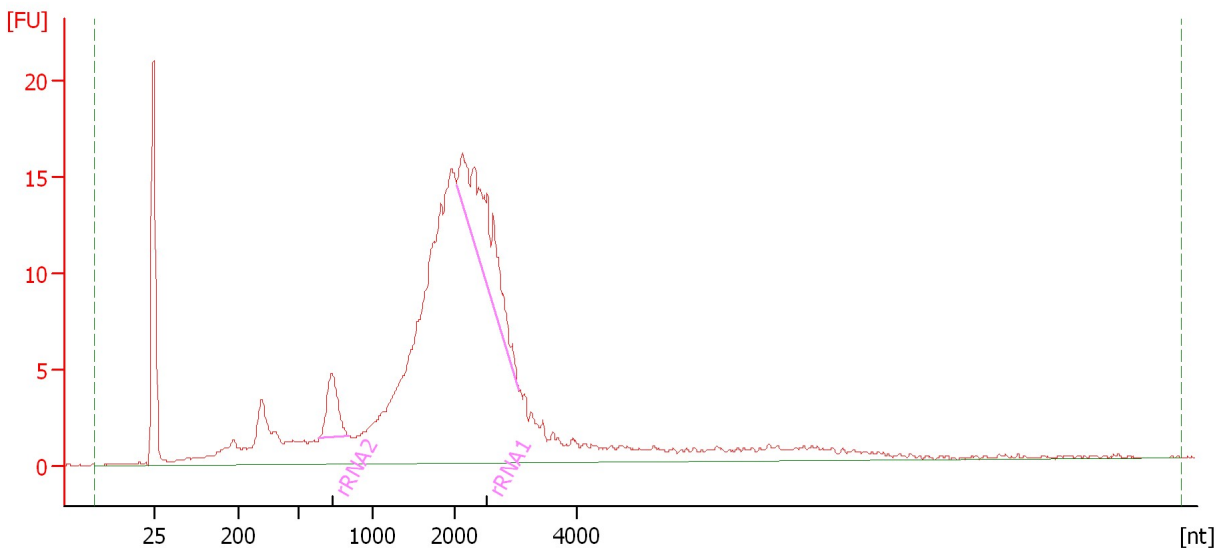
RNA Area: 333.5                      RNA Concentration: 1,000 pg/μl

Assay Class: mRNA Pico  
Data Path: C:\...ents and Settings\Bioanalyzer\2015-07-31\2015-07-31\_002.xad

Created: 7/31/2015 10:06:54 AM  
Modified: 7/31/2015 1:43:51 PM

**Electropherogram Summary Continued ...**

1002.1 [ HiSeq\_164: Ribo-depleted RNA ]



**Overall Results for sample 1 : 1002.1**

RNA Area: 318.8                      rRNA Contamination: 10.4 %  
RNA Concentration: 956 pg/μl

**Fragment table for sample 1 : 1002.1**

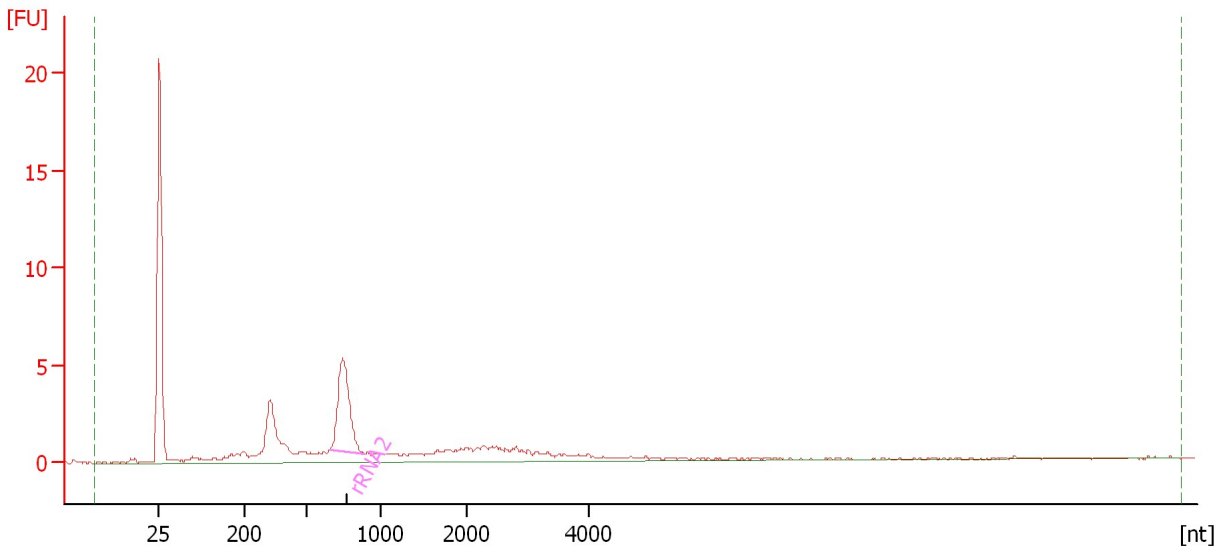
Name	Start Size [nt]	End Size [nt]	Area	% of total Area
rRNA2	643	839	8.6	2.7
rRNA1	2,030	3,056	24.6	7.7

Assay Class: mRNA Pico  
Data Path: C:\...ents and Settings\Bioanalyzer\2015-07-31\2015-07-31\_002.xad

Created: 7/31/2015 10:06:54 AM  
Modified: 7/31/2015 1:43:51 PM

**Electropherogram Summary Continued ...**

1005.1 [ HiSeq\_164: Ribo-depleted RNA ]



**Overall Results for sample 2 : 1005.1**

RNA Area: 64.3                      rRNA Contamination: 19.2 %  
RNA Concentration: 193 pg/μl

**Fragment table for sample 2 : 1005.1**

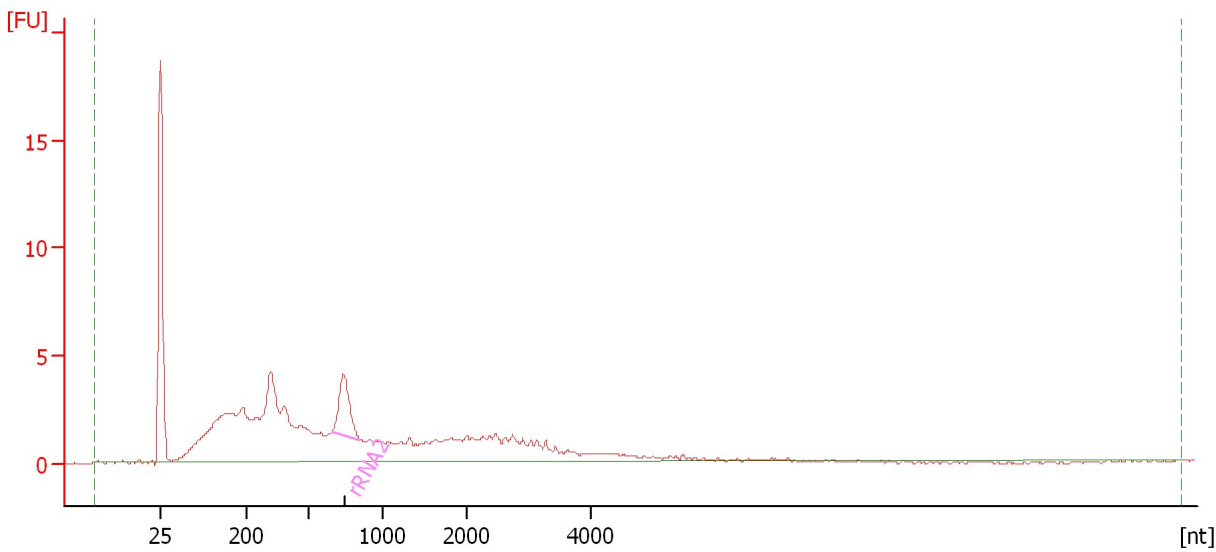
Name	Start Size [nt]	End Size [nt]	Area	% of total Area
rRNA2	660	885	12.4	19.2

Assay Class: mRNA Pico  
Data Path: C:\...ents and Settings\Bioanalyzer\2015-07-31\2015-07-31\_002.xad

Created: 7/31/2015 10:06:54 AM  
Modified: 7/31/2015 1:43:51 PM

**Electropherogram Summary Continued ...**

1014.1 [ HiSeq\_164: Ribo-depleted RNA ]



**Overall Results for sample 3 : 1014.1**

RNA Area: 116.3                      rRNA Contamination: 5.8 %  
RNA Concentration: 349 pg/μl

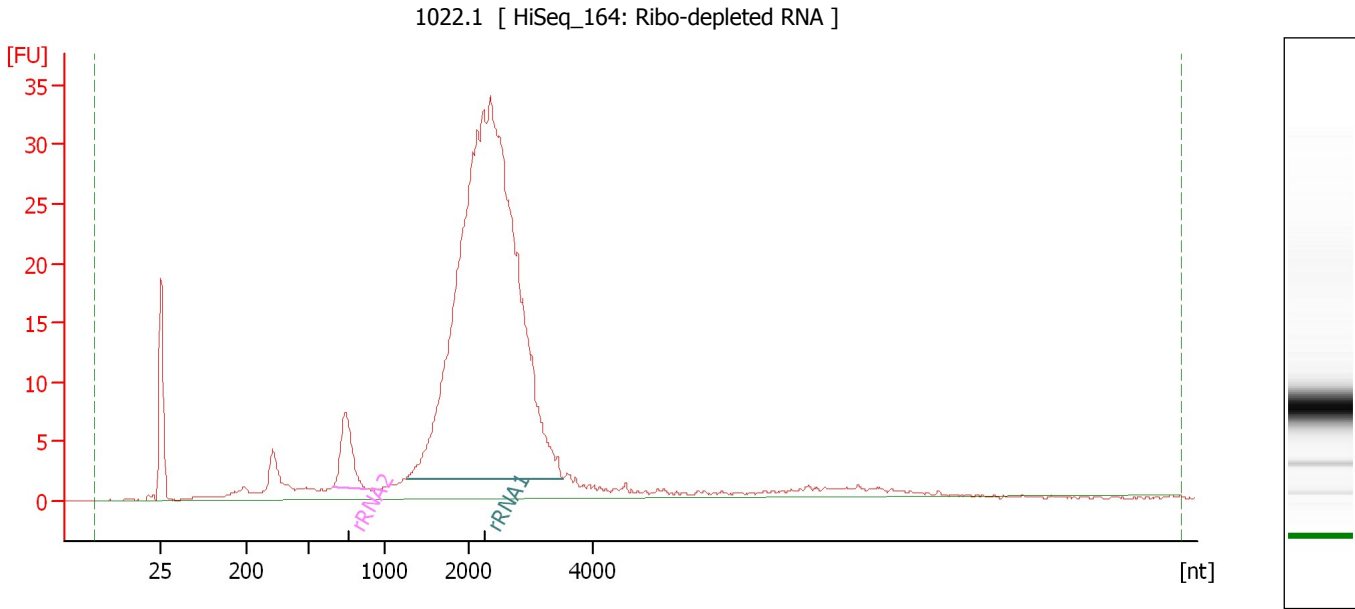
**Fragment table for sample 3 : 1014.1**

Name	Start Size [nt]	End Size [nt]	Area	% of total Area
rRNA2	663	844	6.8	5.8

Assay Class: mRNA Pico  
Data Path: C:\...ents and Settings\Bioanalyzer\2015-07-31\2015-07-31\_002.xad

Created: 7/31/2015 10:06:54 AM  
Modified: 7/31/2015 1:43:51 PM

**Electropherogram Summary Continued ...**



**Overall Results for sample 4 : 1022.1**

RNA Area: 467.6                      rRNA Contamination: 74.5 %  
RNA Concentration: 1,402 pg/μl

**Fragment table for sample 4 : 1022.1**

Name	Start Size [nt]	End Size [nt]	Area	% of total Area
rRNA2	655	878	16.4	3.5
rRNA1	1,264	3,525	332.0	71.0

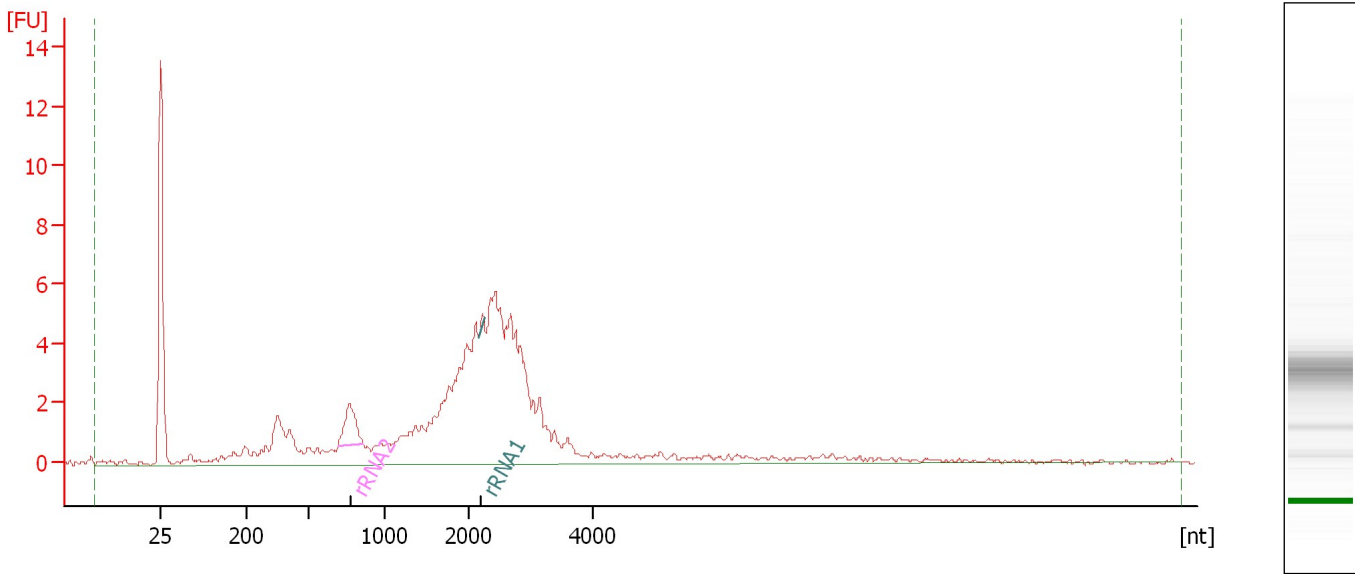


Assay Class: mRNA Pico  
Data Path: C:\...ents and Settings\Bioanalyzer\2015-07-31\2015-07-31\_002.xad

Created: 7/31/2015 10:06:54 AM  
Modified: 7/31/2015 1:43:51 PM

**Electropherogram Summary Continued ...**

1029.1 [ HiSeq\_164: Ribo-depleted RNA ]



**Overall Results for sample 5 : 1029.1**

RNA Area: 109.5                      rRNA Contamination: 3.3 %  
RNA Concentration: 328 pg/μl

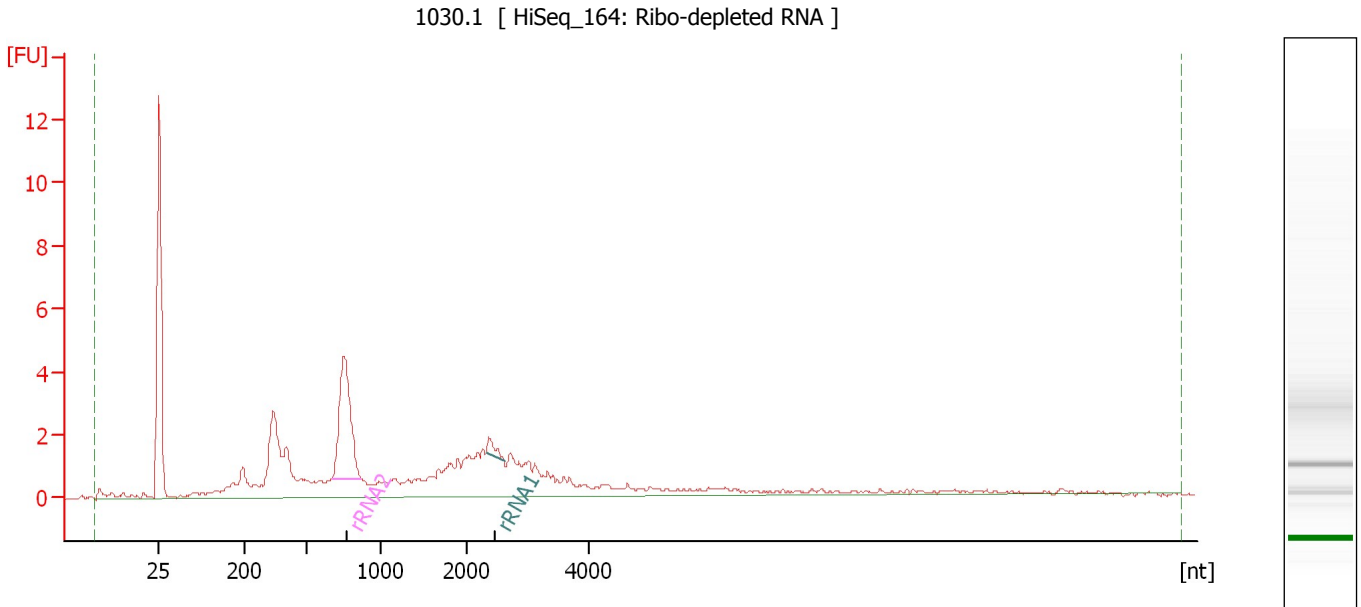
**Fragment table for sample 5 : 1029.1**

Name	Start Size [nt]	End Size [nt]	Area	% of total Area
rRNA2	692	862	3.5	3.2
rRNA1	2,149	2,239	0.1	0.1

Assay Class: mRNA Pico  
 Data Path: C:\...ents and Settings\Bioanalyzer\2015-07-31\2015-07-31\_002.xad

Created: 7/31/2015 10:06:54 AM  
 Modified: 7/31/2015 1:43:51 PM

**Electropherogram Summary Continued ...**



**Overall Results for sample 6 : 1030.1**

RNA Area: 72.0                                      rRNA Contamination: 14.8 %  
 RNA Concentration: 216 pg/μl

**Fragment table for sample 6 : 1030.1**

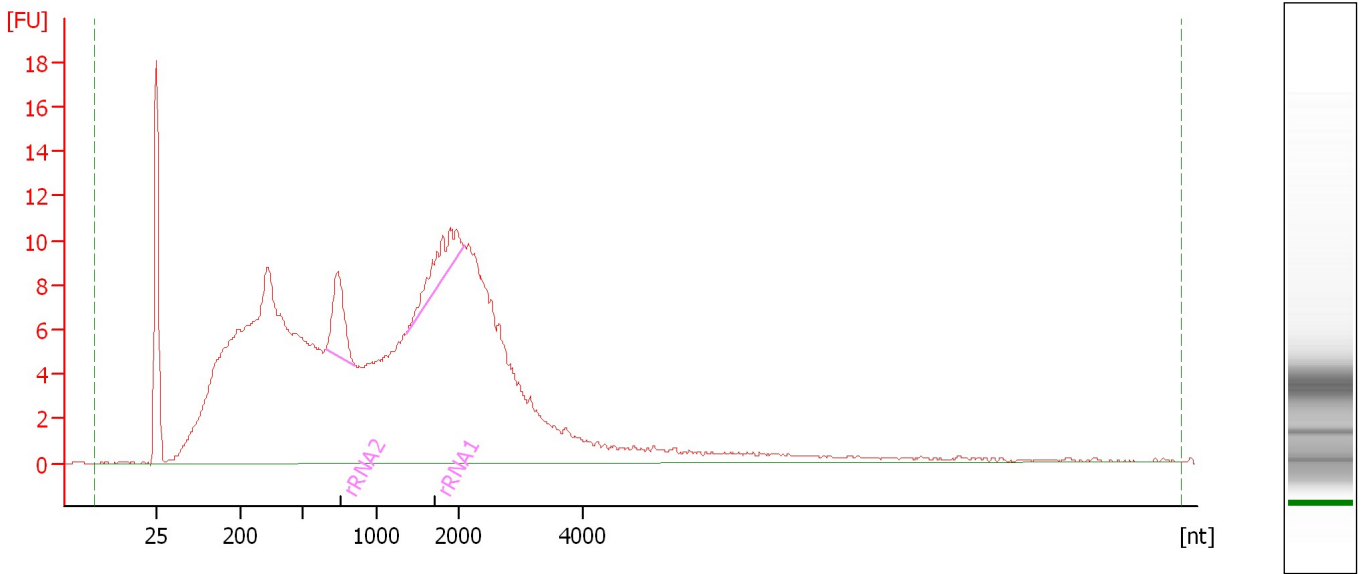
Name	Start Size [nt]	End Size [nt]	Area	% of total Area
rRNA2	671	863	9.9	13.8
rRNA1	2,330	2,614	0.7	1.0

Assay Class: mRNA Pico  
Data Path: C:\...ents and Settings\Bioanalyzer\2015-07-31\2015-07-31\_002.xad

Created: 7/31/2015 10:06:54 AM  
Modified: 7/31/2015 1:43:51 PM

**Electropherogram Summary Continued ...**

1050.1 [ HiSeq\_164: Ribo-depleted RNA ]



**Overall Results for sample 7 : 1050.1**

RNA Area: 439.4                      rRNA Contamination: 4.2 %  
RNA Concentration: 1,318 pg/μl

**Fragment table for sample 7 : 1050.1**

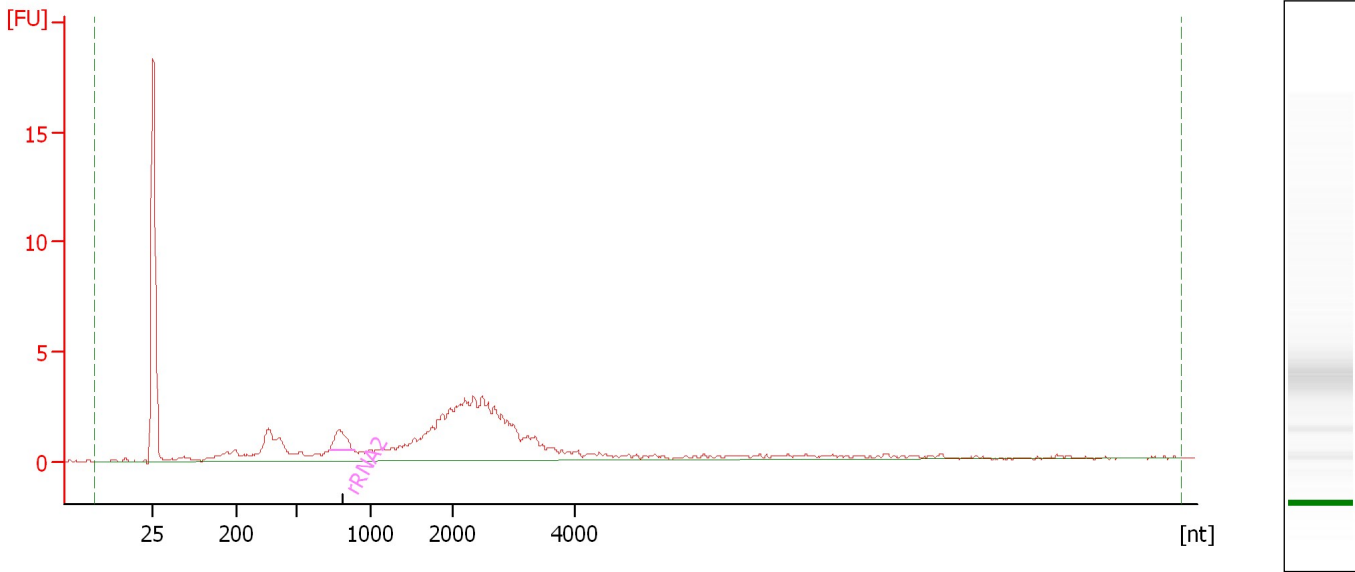
Name	Start Size [nt]	End Size [nt]	Area	% of total Area
rRNA2	661	861	10.0	2.3
rRNA1	1,365	2,070	8.6	1.9

Assay Class: mRNA Pico  
Data Path: C:\...ents and Settings\Bioanalyzer\2015-07-31\2015-07-31\_002.xad

Created: 7/31/2015 10:06:54 AM  
Modified: 7/31/2015 1:43:51 PM

**Electropherogram Summary Continued ...**

1054.1 [ HiSeq\_164: Ribo-depleted RNA ]



**Overall Results for sample 8 : 1054.1**

RNA Area: 71.8                      rRNA Contamination: 3.3 %  
RNA Concentration: 215 pg/μl

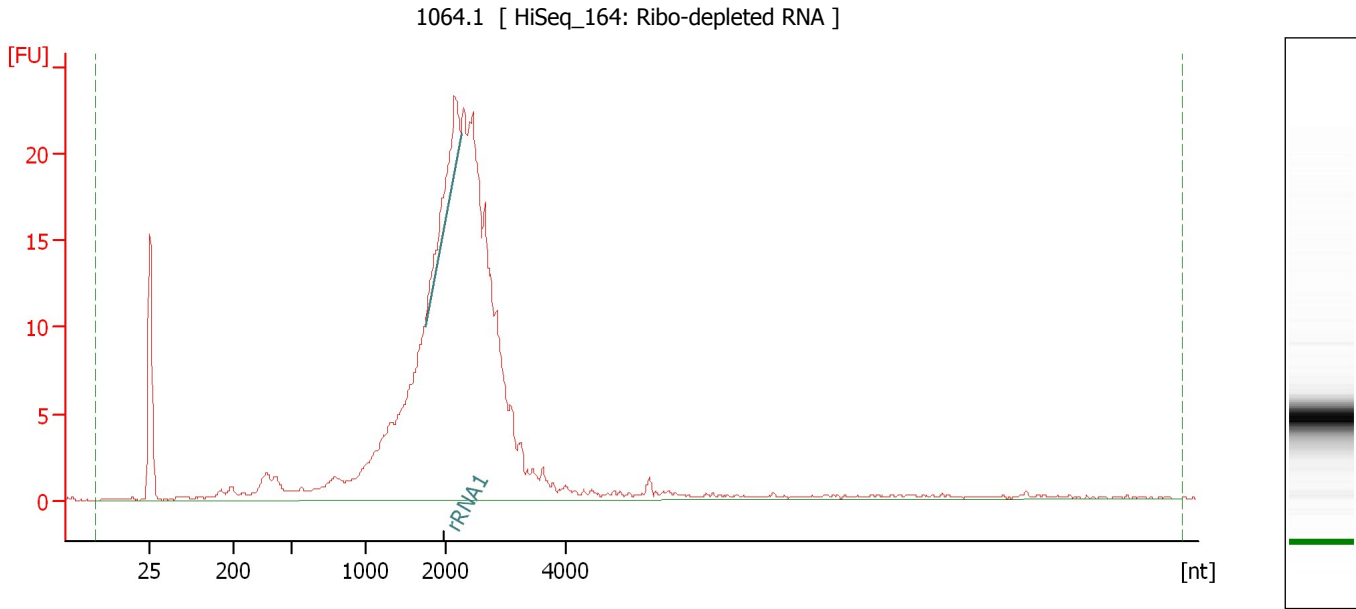
**Fragment table for sample 8 : 1054.1**

Name	Start Size [nt]	End Size [nt]	Area	% of total Area
rRNA2	722	886	2.4	3.3

Assay Class: mRNA Pico  
Data Path: C:\...ents and Settings\Bioanalyzer\2015-07-31\2015-07-31\_002.xad

Created: 7/31/2015 10:06:54 AM  
Modified: 7/31/2015 1:43:51 PM

**Electropherogram Summary Continued ...**



**Overall Results for sample 9 : 1064.1**

RNA Area: 332.8                      rRNA Contamination: 2.9 %  
RNA Concentration: 998 pg/μl

**Fragment table for sample 9 : 1064.1**

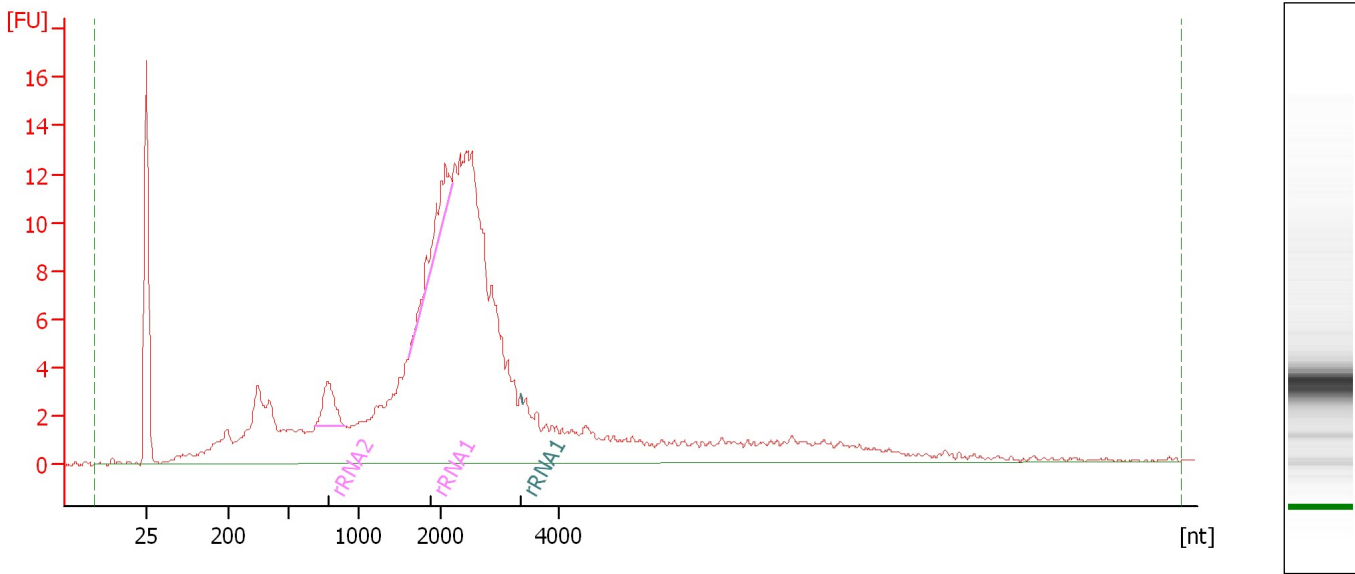
Name	Start Size [nt]	End Size [nt]	Area	% of total Area
rRNA1	1,737	2,241	9.7	2.9

Assay Class: mRNA Pico  
Data Path: C:\...ents and Settings\Bioanalyzer\2015-07-31\2015-07-31\_002.xad

Created: 7/31/2015 10:06:54 AM  
Modified: 7/31/2015 1:43:51 PM

**Electropherogram Summary Continued ...**

1069.1 [ HiSeq\_164: Ribo-depleted RNA ]



**Overall Results for sample 10 : 1069.1**

RNA Area: 281.1                      rRNA Contamination: 3.7 %  
RNA Concentration: 843 pg/μl

**Fragment table for sample 10 : 1069.1**

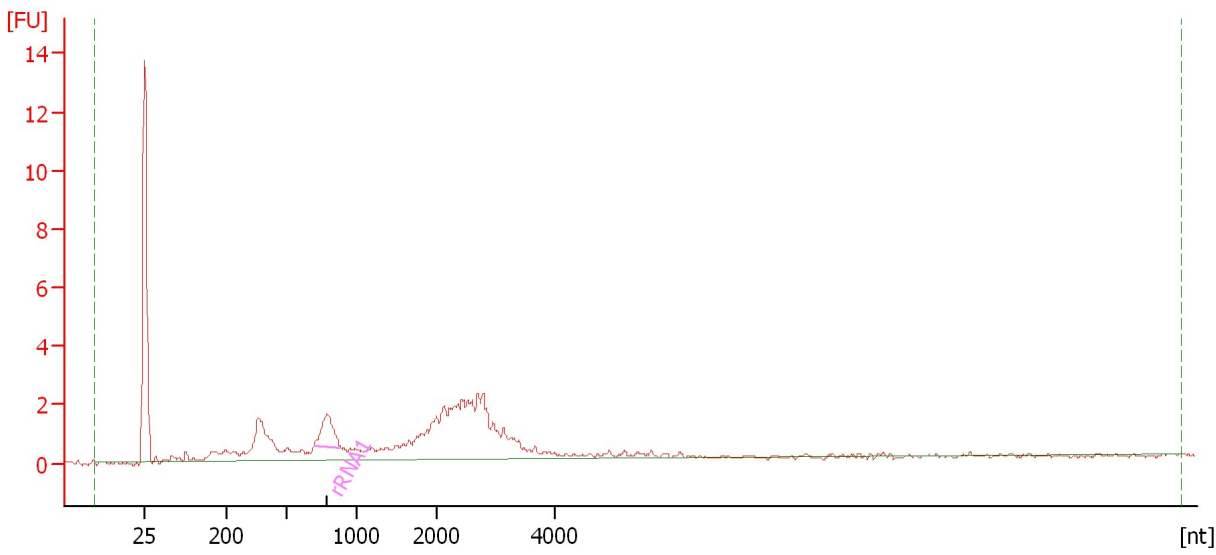
Name	Start Size [nt]	End Size [nt]	Area	% of total Area
rRNA2	691	898	5.1	1.8
rRNA1	1,606	2,187	5.3	1.9
rRNA1	3,345	3,399	0.0	0.0

Assay Class: mRNA Pico  
Data Path: C:\...ents and Settings\Bioanalyzer\2015-07-31\2015-07-31\_002.xad

Created: 7/31/2015 10:06:54 AM  
Modified: 7/31/2015 1:43:51 PM

**Electropherogram Summary Continued ...**

1083.1 [ HiSeq\_164: Ribo-depleted RNA ]



**Overall Results for sample 11 : 1083.1**

RNA Area: 47.6                      rRNA Contamination: 6.5 %  
RNA Concentration: 143 pg/μl

**Fragment table for sample 11 : 1083.1**

Name	Start Size [nt]	End Size [nt]	Area	% of total Area
rRNA1	698	888	3.1	6.5

Assay Class: mRNA Pico  
Data Path: C:\...ents and Settings\Bioanalyzer\2015-07-31\2015-07-31\_002.xad

Created: 7/31/2015 10:06:54 AM  
Modified: 7/31/2015 1:43:51 PM

**Gel Image**

