

Assay Class: mRNA Pico  
Data Path: C:\...2015-07-31\2015-07-31\_003\_HiSeq164\_RiboDepletedRNA\_2of2.xad

Created: 7/31/2015 10:44:11 AM  
Modified: 8/4/2015 3:43:32 PM

**Electrophoresis File Run Summary**

Chip Information:

Instrument Name: DE13701086      Firmware: C.01.069  
Serial#: DE13701086      Type: G2938B

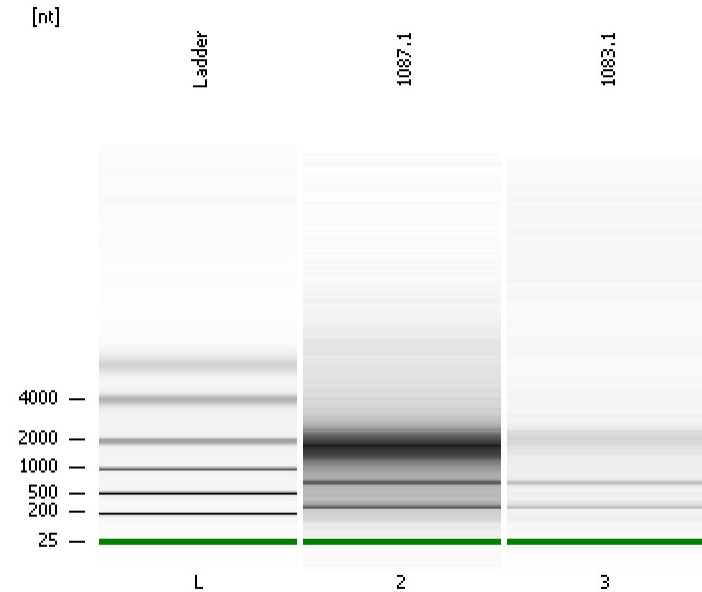
Assay Information:

Assay Origin Path: C:\Program Files\Agilent\2100 bioanalyzer\2100 expert\assays\RNA\mRNA Pico Series II.xsy

Assay Class: mRNA Pico  
Version: 2.6  
Assay Comments: mRNA Analysis pg sensitivity

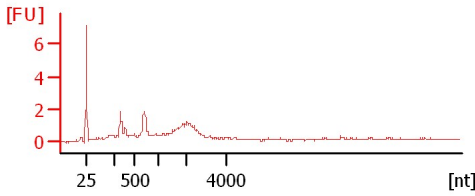
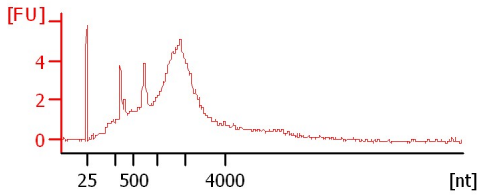
© Copyright 2003 - 2009 Agilent Technologies, Inc.

Chip Information:



1087.1

1083.1



Assay Class: mRNA Pico  
Data Path: C:\...2015-07-31\2015-07-31\_003\_HiSeq164\_RiboDepletedRNA\_2of2.xad

Created: 7/31/2015 10:44:11 AM  
Modified: 8/4/2015 3:43:32 PM

**Electrophoresis File Run Summary (Chip Summary)**

**Chip Comments :**

Assay Class: mRNA Pico  
Data Path: C:\...2015-07-31\2015-07-31\_003\_HiSeq164\_RiboDepletedRNA\_2of2.xad

Created: 7/31/2015 10:44:11 AM  
Modified: 8/4/2015 3:43:32 PM

## Electrophoresis Assay Details

### General Analysis Settings

Number of Available Sample and Ladder Wells (Max.) : 12

Minimum Visible Range [s] : 14

Maximum Visible Range [s] : 85

Start Analysis Time Range [s] : 15

End Analysis Time Range [s] : 84

Ladder Concentration [pg/ $\mu$ l] : 1000

Lower Marker Concentration [pg/ $\mu$ l] : 0

Upper Marker Concentration [pg/ $\mu$ l] : 0

Used Lower Marker for Quantitation

Standard Curve Fit is Logarithmic

Show Data Aligned to Lower Marker

### Integrator Settings

Integration Start Time [s] : 15

Integration End Time [s] : 84

Slope Threshold : 0.2

Height Threshold [FU] : 0.5

Area Threshold : 0.1

Width Threshold [s] : 0.2

Baseline Plateau [s] : 0.5

### Filter Settings

Filter Width [s] : 0.5

Polynomial Order : 4

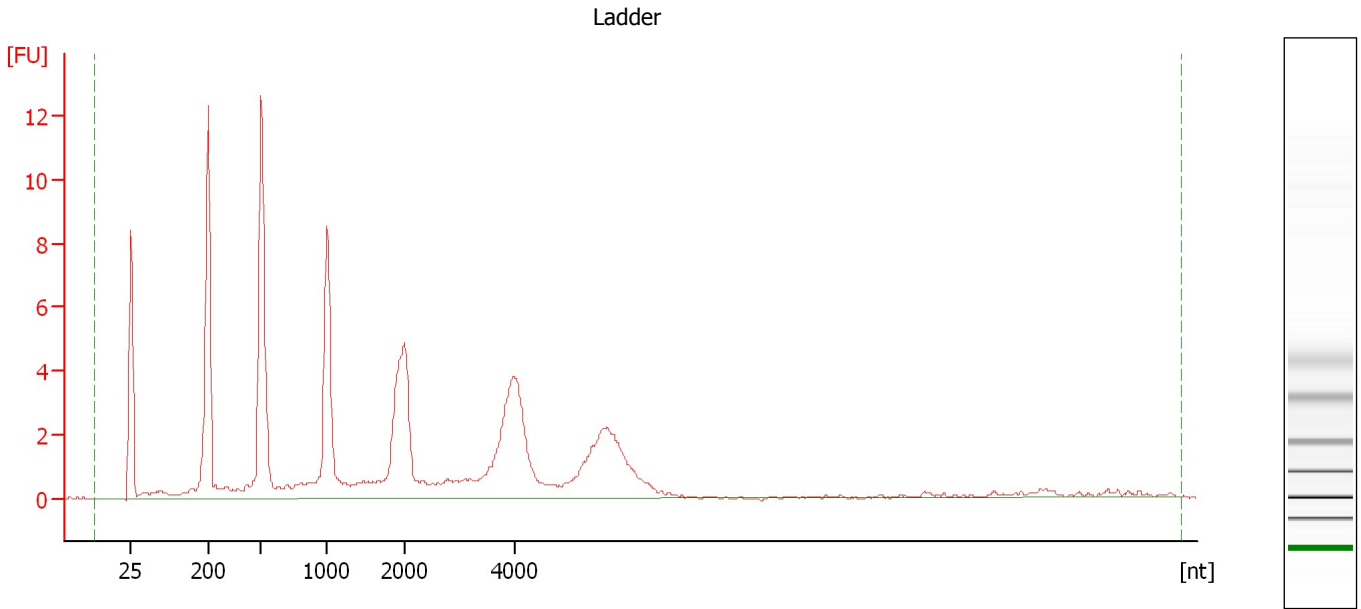
### Ladder

Ladder Peak	Size
1	25
2	200
3	500
4	1000
5	2000
6	4000

Assay Class: mRNA Pico  
Data Path: C:\...2015-07-31\2015-07-31\_003\_HiSeq164\_RiboDepletedRNA\_2of2.xad

Created: 7/31/2015 10:44:11 AM  
Modified: 8/4/2015 3:43:32 PM

**Electropherogram Summary**



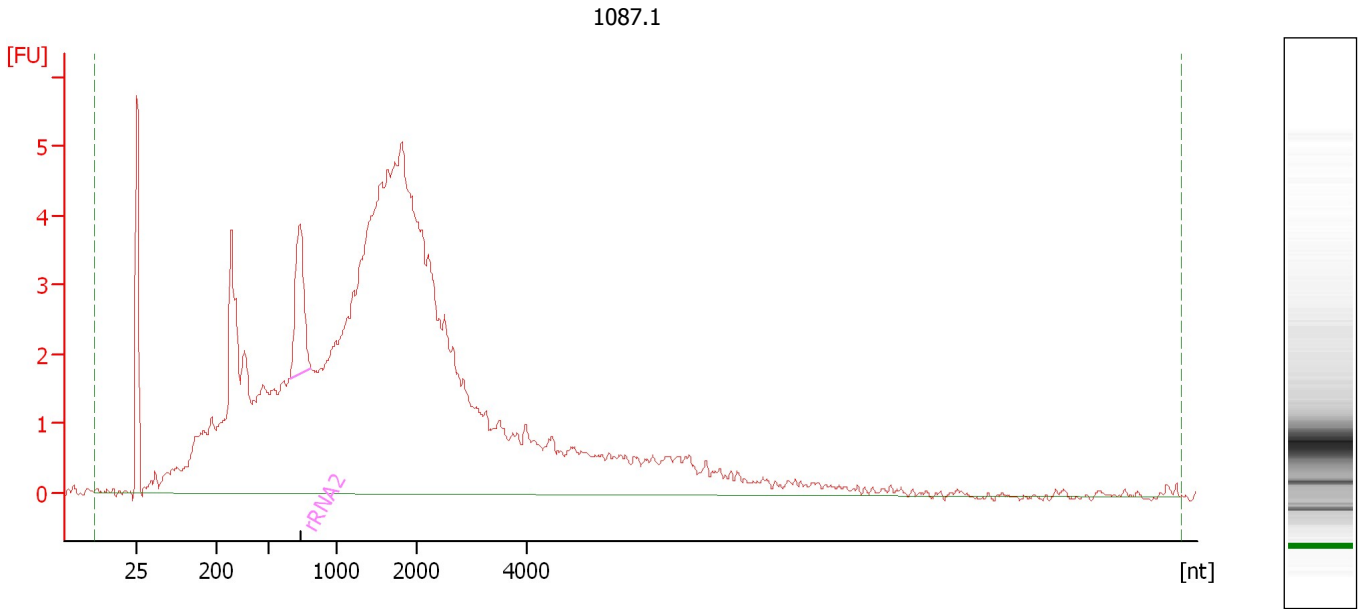
**Overall Results for Ladder**

RNA Area: 124.8                      RNA Concentration: 1,000 pg/μl

Assay Class: mRNA Pico  
 Data Path: C:\...2015-07-31\2015-07-31\_003\_HiSeq164\_RiboDepletedRNA\_2of2.xad

Created: 7/31/2015 10:44:11 AM  
 Modified: 8/4/2015 3:43:32 PM

**Electropherogram Summary Continued ...**



**Overall Results for sample 2 : 1087.1**

RNA Area: 167.4                      rRNA Contamination: 2.8 %  
 RNA Concentration: 1,342 pg/μl

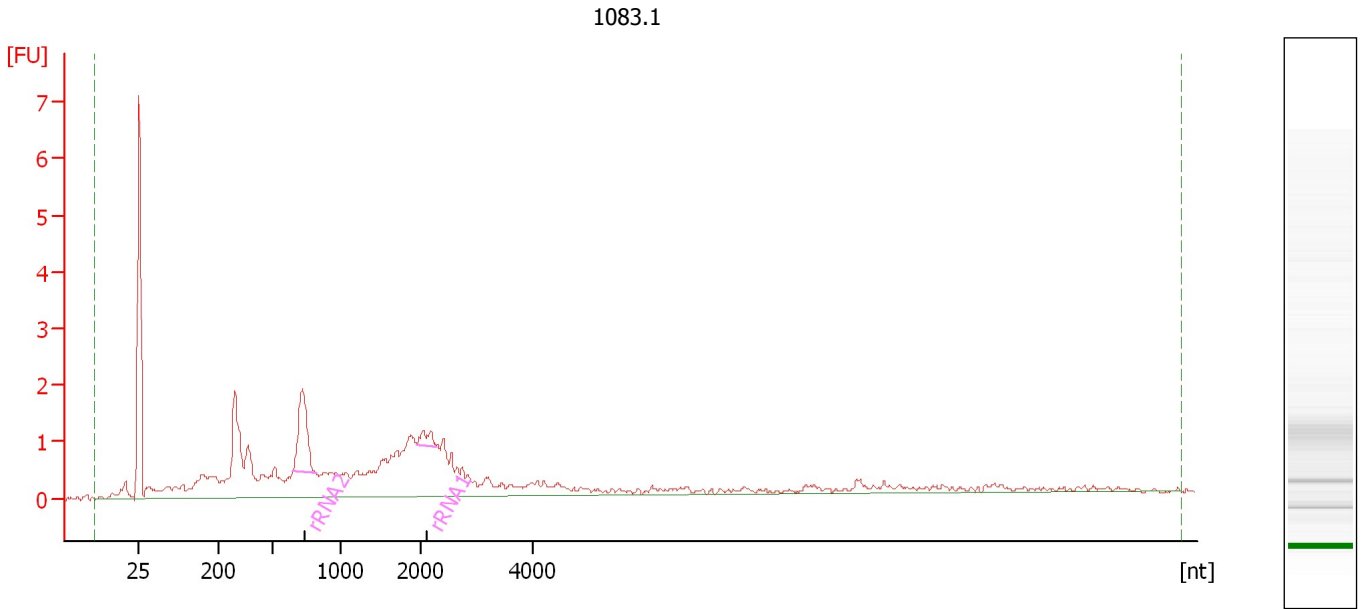
**Fragment table for sample 2 : 1087.1**

Name	Start Size [nt]	End Size [nt]	Area	% of total Area
rRNA2	652	812	4.7	2.8

Assay Class: mRNA Pico  
 Data Path: C:\...2015-07-31\2015-07-31\_003\_HiSeq164\_RiboDepletedRNA\_2of2.xad

Created: 7/31/2015 10:44:11 AM  
 Modified: 8/4/2015 3:43:32 PM

**Electropherogram Summary Continued ...**



**Overall Results for sample 3 : 1083.1**

RNA Area: 45.0                      rRNA Contamination: 8.1 %  
 RNA Concentration: 361 pg/μl

**Fragment table for sample 3 : 1083.1**

Name	Start Size [nt]	End Size [nt]	Area	% of total Area
rRNA2	649	819	3.1	6.9
rRNA1	1,965	2,278	0.6	1.2

Assay Class: mRNA Pico  
Data Path: C:\...2015-07-31\2015-07-31\_003\_HiSeq164\_RiboDepletedRNA\_2of2.xad

Created: 7/31/2015 10:44:11 AM  
Modified: 8/4/2015 3:43:32 PM

**Gel Image**

