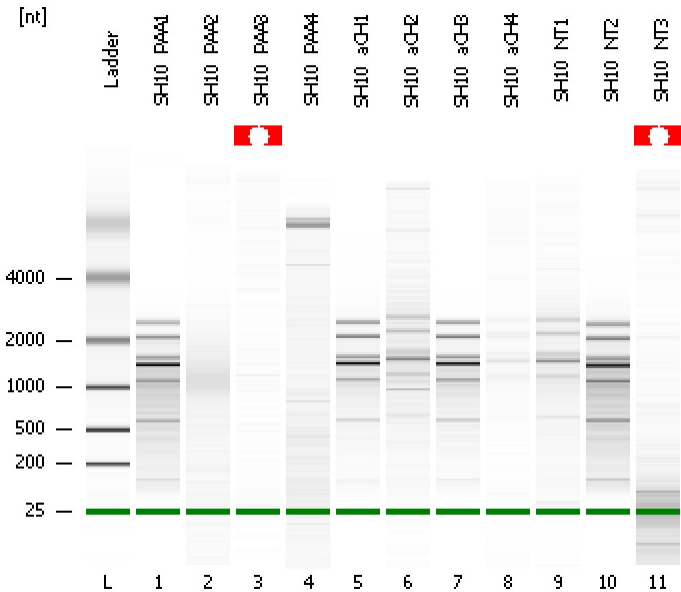


Assay Class: Prokaryote Total RNA Pico  
Data Path: C:\...ents and Settings\Bioanalyzer\2015-08-03\2015-08-03\_001.xad

Created: 8/3/2015 9:56:49 AM  
Modified: 8/3/2015 10:19:45 AM

**Electrophoresis File Run Summary**



Instrument Information:

Instrument Name: DE13701086      Firmware: C.01.069  
Serial#: DE13701086      Type: G2938B

Assay Information:

Assay Origin Path: C:\Program Files\Agilent\2100 bioanalyzer\2100 expert\assays\RNA\Prokaryote Total RNA Pico Series II.xsy  
Assay Class: Prokaryote Total RNA Pico  
Version: 2.5  
Assay Comments: Total RNA Analysis pg sensitivity (Prokaryote)  
© Copyright 2003 - 2009 Agilent Technologies, Inc.

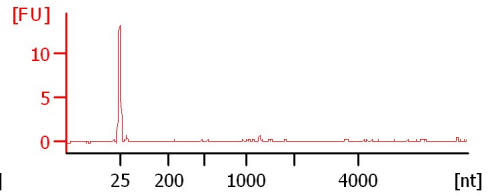
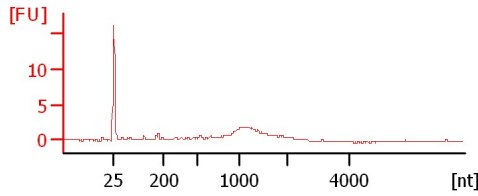
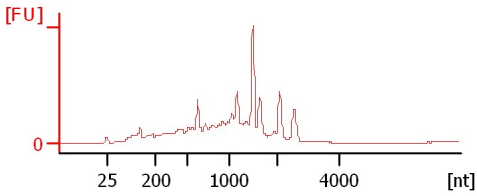
Chip Information:

Chip Lot #:   
Reagent Kit Lot #:   
Chip Comments:

SH10\_PAA1

SH10\_PAA2

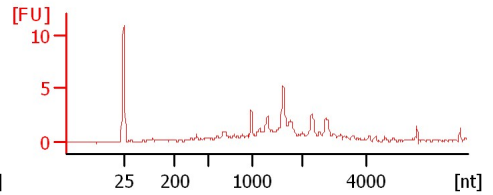
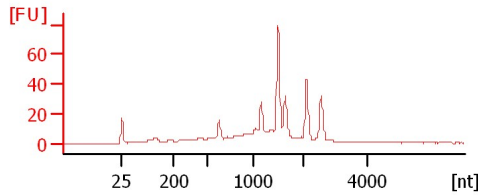
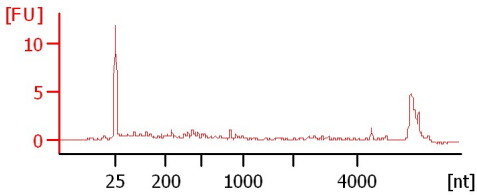
SH10\_PAA3



SH10\_PAA4

SH10\_aCH1

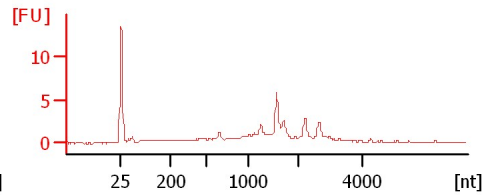
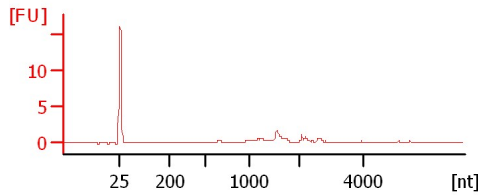
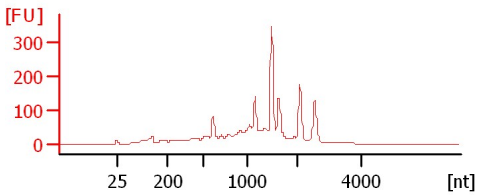
SH10\_aCH2



SH10\_aCH3

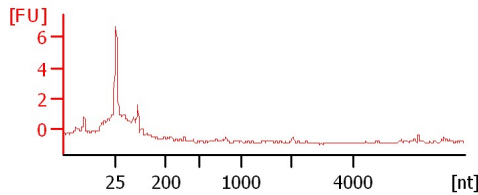
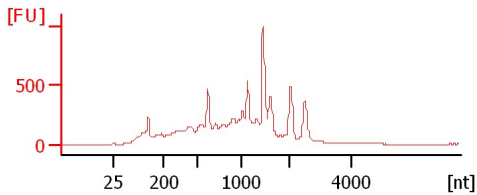
SH10\_aCH4

SH10\_NT1



SH10\_NT2

SH10\_NT3



Assay Class: Prokaryote Total RNA Pico  
Data Path: C:\...ents and Settings\Bioanalyzer\2015-08-03\2015-08-03\_001.xad

Created: 8/3/2015 9:56:49 AM  
Modified: 8/3/2015 10:19:45 AM

**Electrophoresis File Run Summary (Chip Summary)**

Sample Name	Sample Comment	Status	Result Label	Result Color
SH10_PAA1		✓		
SH10_PAA2		✓		
SH10_PAA3		✓		
SH10_PAA4		✓		
SH10_aCH1		✓		
SH10_aCH2		✓		
SH10_aCH3		✓		
SH10_aCH4		✓		
SH10_NT1		✓		
SH10_NT2		✓		
SH10_NT3		✓		
Ladder		✓		

**Chip Lot #****Reagent Kit Lot #****Chip Comments :**

Assay Class: Prokaryote Total RNA Pico  
Data Path: C:\...ents and Settings\Bioanalyzer\2015-08-03\2015-08-03\_001.xad

Created: 8/3/2015 9:56:49 AM  
Modified: 8/3/2015 10:19:45 AM

## Electrophoresis Assay Details

### General Analysis Settings

Number of Available Sample and Ladder Wells (Max.) : 12  
Minimum Visible Range [s] : 17  
Maximum Visible Range [s] : 70  
Start Analysis Time Range [s] : 18  
End Analysis Time Range [s] : 69  
Ladder Concentration [pg/ $\mu$ l] : 1000  
Lower Marker Concentration [pg/ $\mu$ l] : 0  
Upper Marker Concentration [pg/ $\mu$ l] : 0  
Used Lower Marker for Quantitation  
Standard Curve Fit is Logarithmic  
Show Data Aligned to Lower Marker

### Integrator Settings

Integration Start Time [s] : 18  
Integration End Time [s] : 69  
Slope Threshold : 0.6  
Height Threshold [FU] : 0.5  
Area Threshold : 0.2  
Width Threshold [s] : 0.3  
Baseline Plateau [s] : 6

### Filter Settings

Filter Width [s] : 0.5  
Polynomial Order : 4

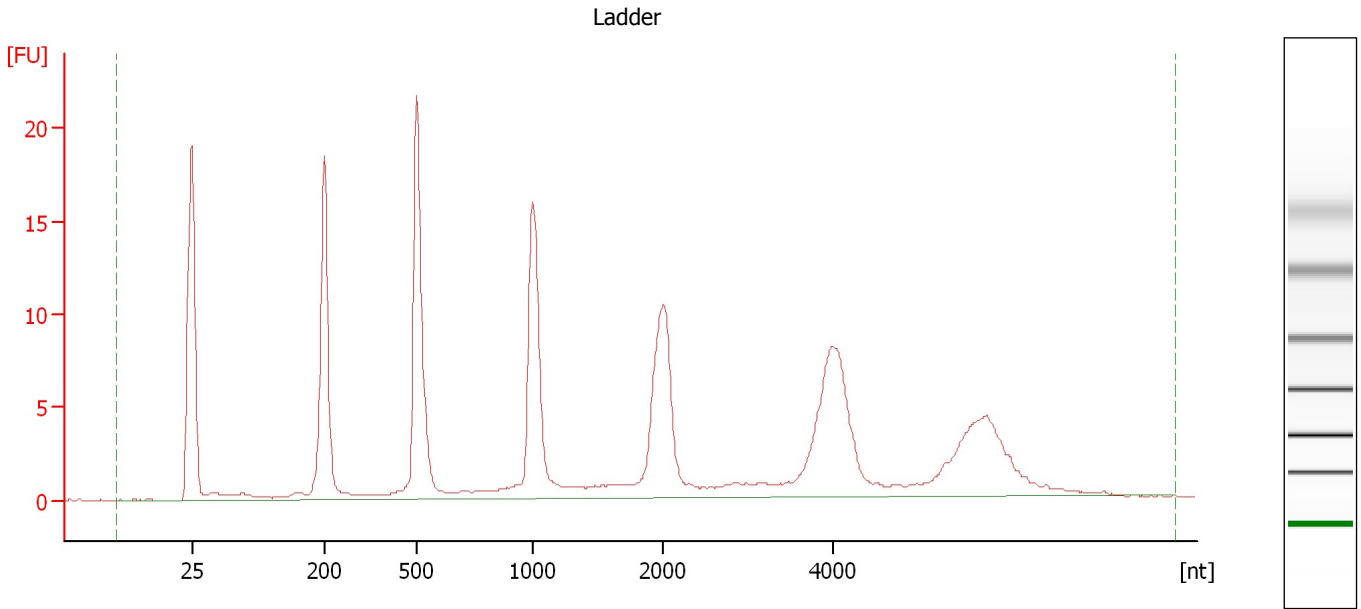
### Ladder

Ladder Peak	Size
1	25
2	200
3	500
4	1000
5	2000
6	4000

Assay Class: Prokaryote Total RNA Pico  
Data Path: C:\...ents and Settings\Bioanalyzer\2015-08-03\2015-08-03\_001.xad

Created: 8/3/2015 9:56:49 AM  
Modified: 8/3/2015 10:19:45 AM

**Electropherogram Summary**



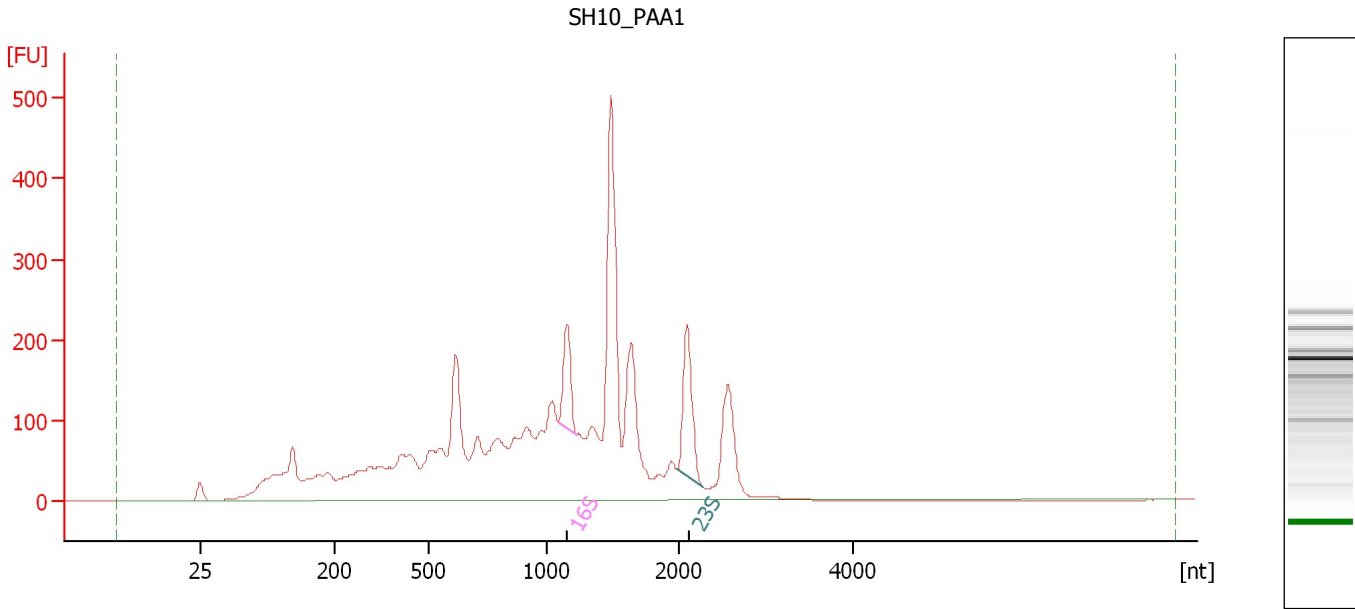
**Overall Results for Ladder**

RNA Area: 182.3                      RNA Concentration: 1,000 pg/μl

Assay Class: Prokaryote Total RNA Pico  
Data Path: C:\...ents and Settings\Bioanalyzer\2015-08-03\2015-08-03\_001.xad

Created: 8/3/2015 9:56:49 AM  
Modified: 8/3/2015 10:19:45 AM

**Electropherogram Summary Continued ...**



**Overall Results for sample 1 : SH10\_PAA1**

RNA Area: 4,335.1                      rRNA Ratio [23s / 16s]: 1.7  
RNA Concentration: 23,776 pg/μl                      RNA Integrity Number (RIN): 3.5 (B.02.08)

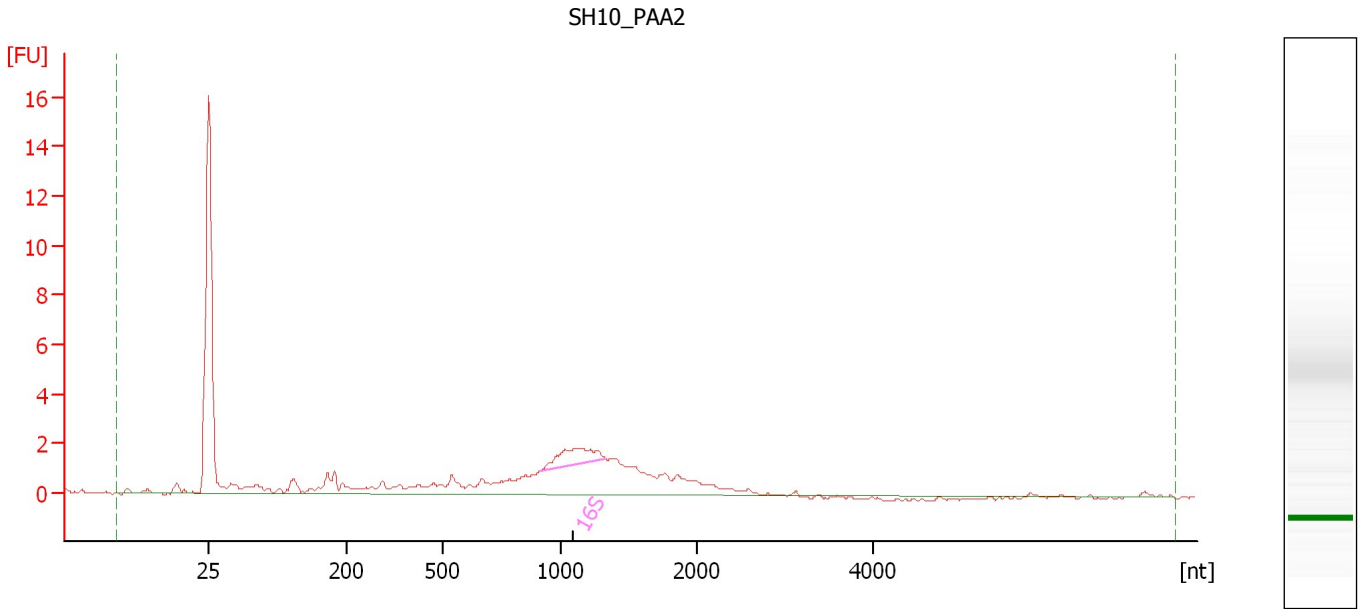
**Fragment table for sample 1 : SH10\_PAA1**

Name	Start Size [nt]	End Size [nt]	Area	% of total Area
16S	1,084	1,221	116.4	2.7
23S	1,978	2,276	196.2	4.5

Assay Class: Prokaryote Total RNA Pico  
Data Path: C:\...ents and Settings\Bioanalyzer\2015-08-03\2015-08-03\_001.xad

Created: 8/3/2015 9:56:49 AM  
Modified: 8/3/2015 10:19:45 AM

**Electropherogram Summary Continued ...**



**Overall Results for sample 2 : SH10\_PAA2**

RNA Area: 39.4                      rRNA Ratio [23s / 16s]: 0.0  
RNA Concentration: 216 pg/μl              RNA Integrity Number (RIN): 2.9 (B.02.08)

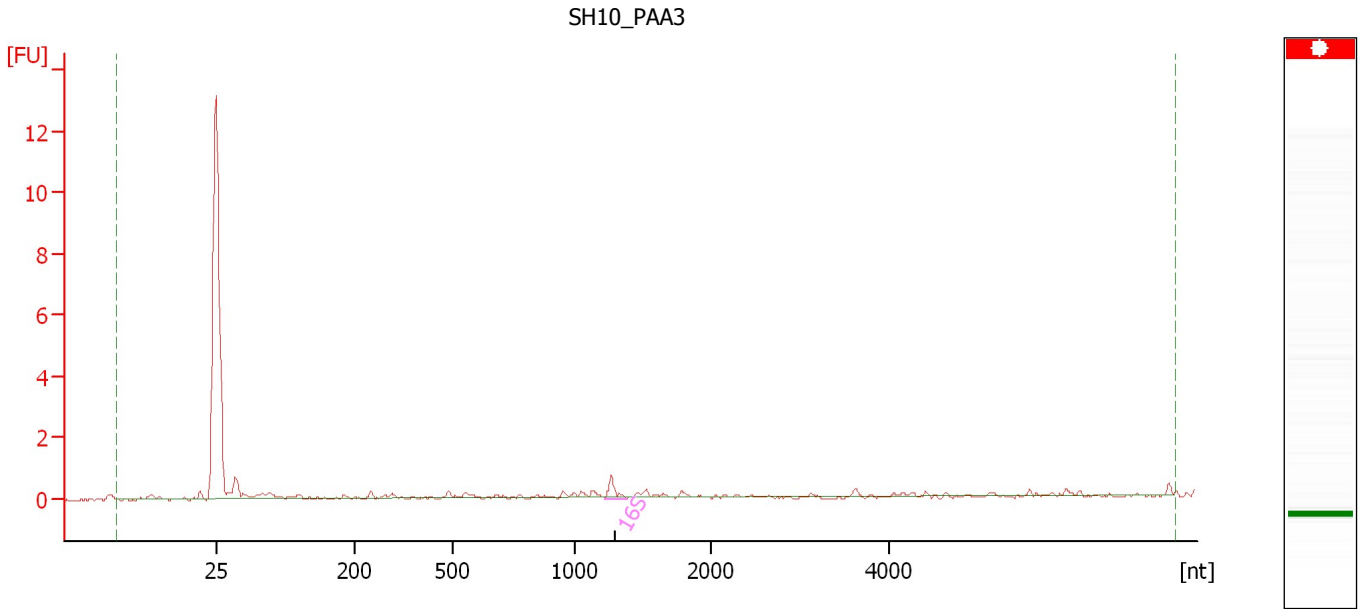
**Fragment table for sample 2 : SH10\_PAA2**

Name	Start Size [nt]	End Size [nt]	Area	% of total Area
16S	910	1,324	3.0	7.7

Assay Class: Prokaryote Total RNA Pico  
Data Path: C:\...ents and Settings\Bioanalyzer\2015-08-03\2015-08-03\_001.xad

Created: 8/3/2015 9:56:49 AM  
Modified: 8/3/2015 10:19:45 AM

**Electropherogram Summary Continued ...**



**Overall Results for sample 3 : SH10\_PAA3**

RNA Area: 4.6 rRNA Ratio [23s / 16s]: 0.0  
RNA Concentration: 25 pg/μl RNA Integrity Number (RIN): N/A (B.02.08)

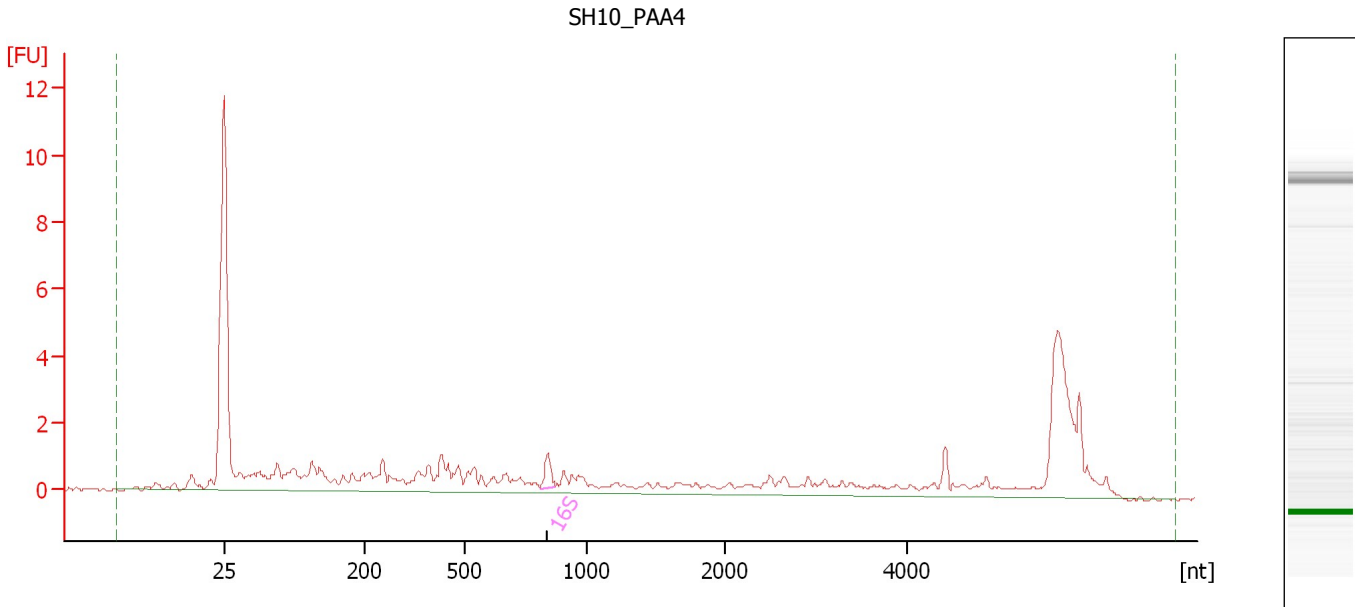
**Fragment table for sample 3 : SH10\_PAA3**

Name	Start Size [nt]	End Size [nt]	Area	% of total Area
16S	1,226	1,390	0.6	12.6

Assay Class: Prokaryote Total RNA Pico  
Data Path: C:\...ents and Settings\Bioanalyzer\2015-08-03\2015-08-03\_001.xad

Created: 8/3/2015 9:56:49 AM  
Modified: 8/3/2015 10:19:45 AM

**Electropherogram Summary Continued ...**



**Overall Results for sample 4 : SH10\_PAA4**

RNA Area: 48.5                      rRNA Ratio [23s / 16s]: 0.0  
RNA Concentration: 266 pg/μl              RNA Integrity Number (RIN): 4.9 (B.02.08)

**Fragment table for sample 4 : SH10\_PAA4**

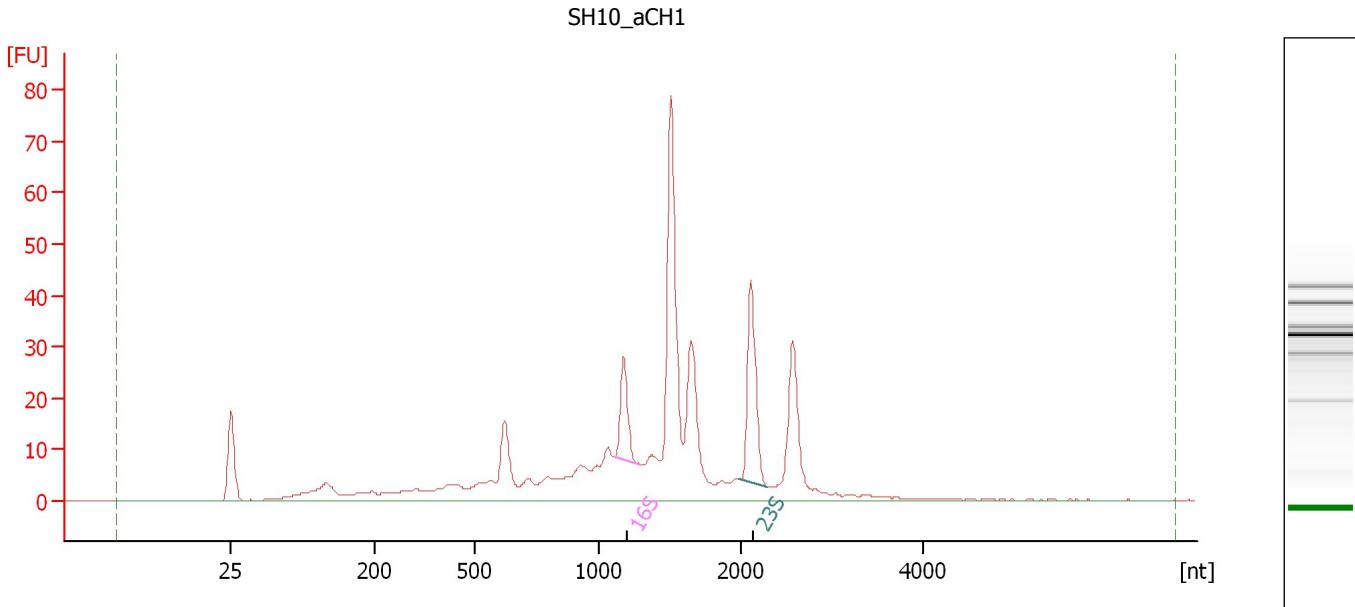
Name	Start Size [nt]	End Size [nt]	Area	% of total Area
16S	809	870	0.8	1.7



Assay Class: Prokaryote Total RNA Pico  
Data Path: C:\...ents and Settings\Bioanalyzer\2015-08-03\2015-08-03\_001.xad

Created: 8/3/2015 9:56:49 AM  
Modified: 8/3/2015 10:19:45 AM

**Electropherogram Summary Continued ...**



**Overall Results for sample 5 : SH10\_aCH1**

RNA Area: 429.0 rRNA Ratio [23s / 16s]: 1.9  
RNA Concentration: 2,353 pg/μl RNA Integrity Number (RIN): 4.4 (B.02.08)

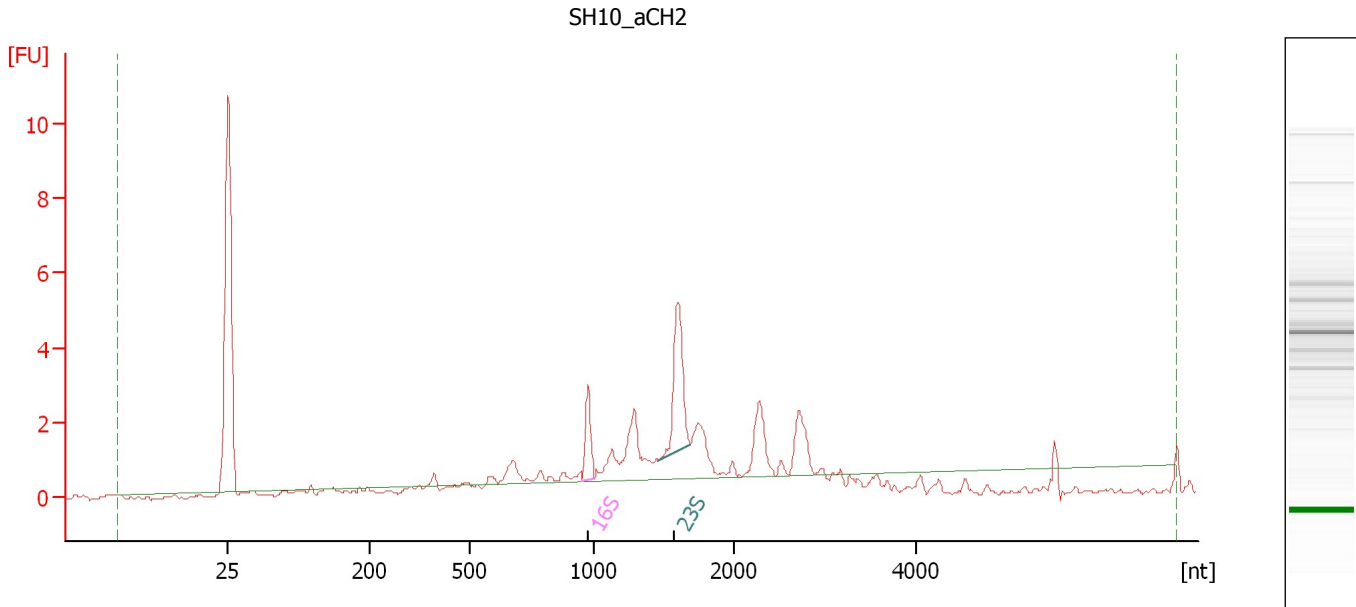
**Fragment table for sample 5 : SH10\_aCH1**

Name	Start Size [nt]	End Size [nt]	Area	% of total Area
16S	1,108	1,290	18.3	4.3
23S	1,996	2,297	35.2	8.2

Assay Class: Prokaryote Total RNA Pico  
Data Path: C:\...ents and Settings\Bioanalyzer\2015-08-03\2015-08-03\_001.xad

Created: 8/3/2015 9:56:49 AM  
Modified: 8/3/2015 10:19:45 AM

**Electropherogram Summary Continued ...**



**Overall Results for sample 6 : SH10\_aCH2**

RNA Area: 23.1 rRNA Ratio [23s / 16s]: 2.3  
RNA Concentration: 127 pg/μl RNA Integrity Number (RIN): 5.4 (B.02.08)

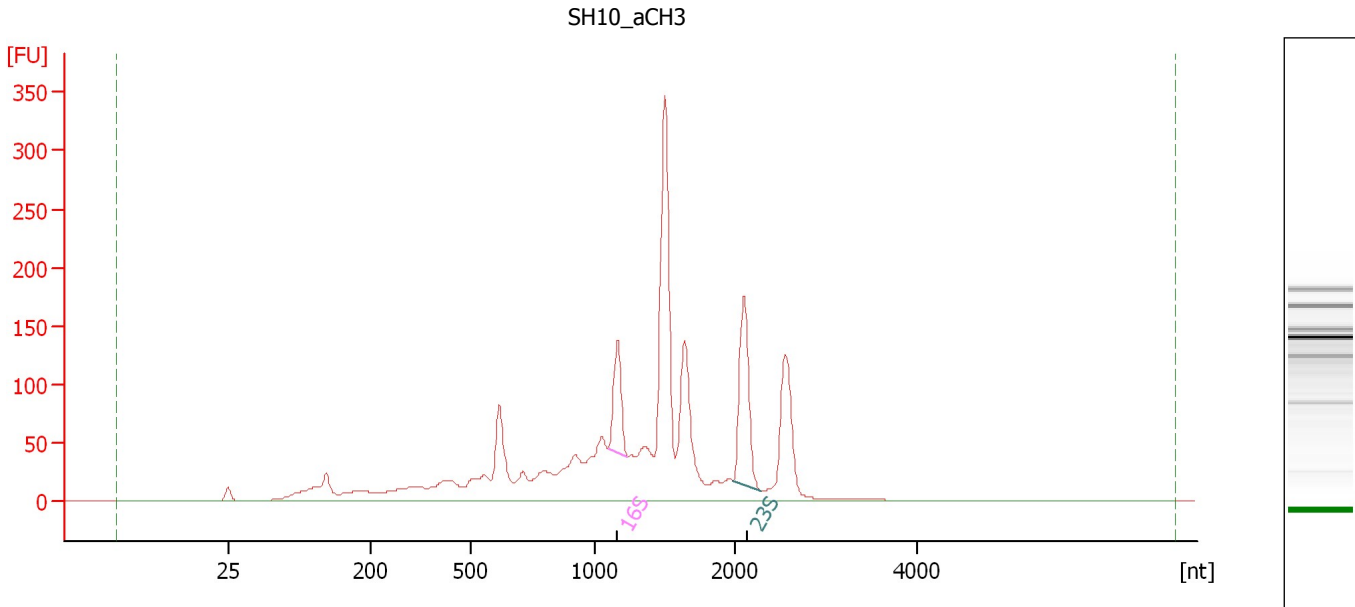
**Fragment table for sample 6 : SH10\_aCH2**

Name	Start Size [nt]	End Size [nt]	Area	% of total Area
16S	957	1,008	1.8	7.8
23S	1,467	1,696	4.1	17.7

Assay Class: Prokaryote Total RNA Pico  
Data Path: C:\...ents and Settings\Bioanalyzer\2015-08-03\2015-08-03\_001.xad

Created: 8/3/2015 9:56:49 AM  
Modified: 8/3/2015 10:19:45 AM

**Electropherogram Summary Continued ...**



**Overall Results for sample 7 : SH10\_aCH3**

RNA Area: 2,071.3                      rRNA Ratio [23s / 16s]: 1.8  
RNA Concentration: 11,360 pg/μl                      RNA Integrity Number (RIN): 4.4 (B.02.08)

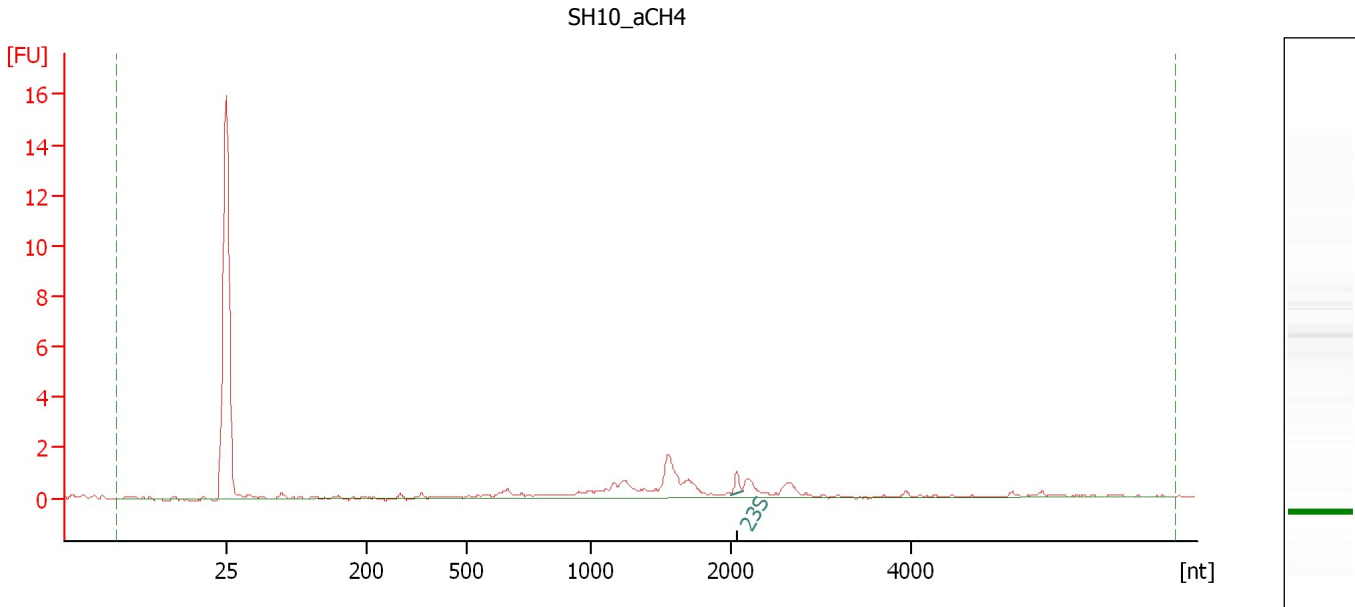
**Fragment table for sample 7 : SH10\_aCH3**

Name	Start Size [nt]	End Size [nt]	Area	% of total Area
16S	1,102	1,239	88.2	4.3
23S	1,987	2,285	162.0	7.8

Assay Class: Prokaryote Total RNA Pico  
Data Path: C:\...ents and Settings\Bioanalyzer\2015-08-03\2015-08-03\_001.xad

Created: 8/3/2015 9:56:49 AM  
Modified: 8/3/2015 10:19:45 AM

**Electropherogram Summary Continued ...**



**Overall Results for sample 8 : SH10\_aCH4**

RNA Area: 16.3 rRNA Ratio [23s / 16s]: 0.0  
RNA Concentration: 90 pg/μl RNA Integrity Number (RIN): 1.2 (B.02.08)

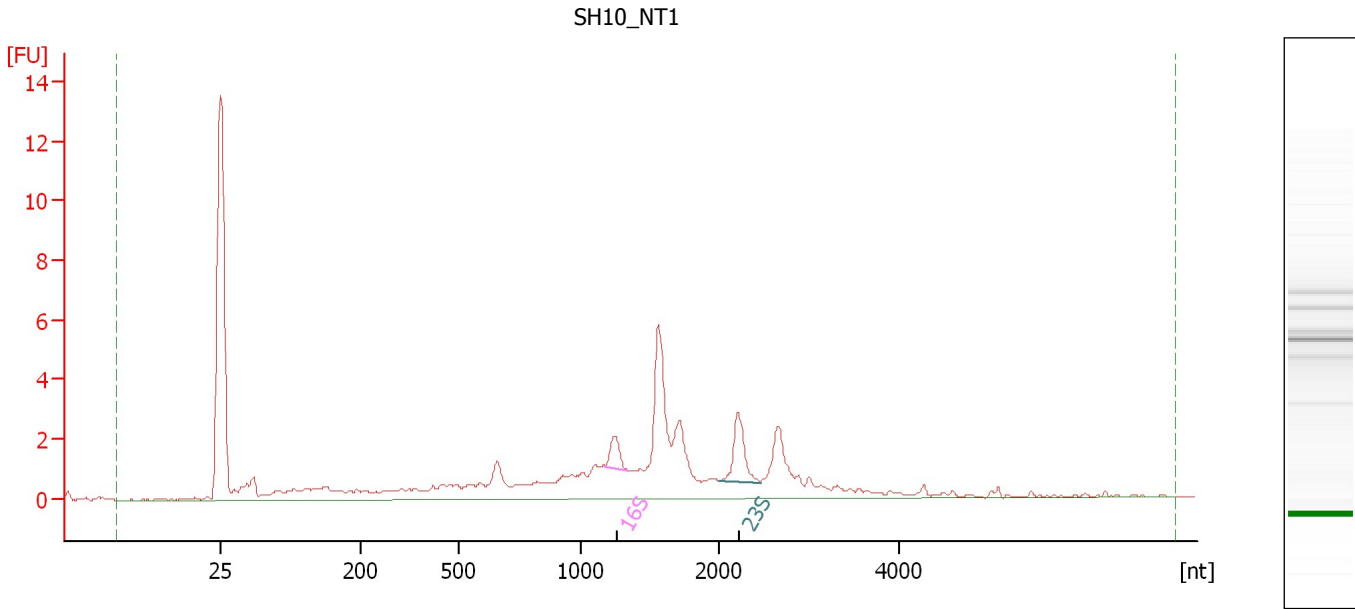
**Fragment table for sample 8 : SH10\_aCH4**

Name	Start Size [nt]	End Size [nt]	Area	% of total Area
23S	2,015	2,133	0.4	2.5

Assay Class: Prokaryote Total RNA Pico  
Data Path: C:\...ents and Settings\Bioanalyzer\2015-08-03\2015-08-03\_001.xad

Created: 8/3/2015 9:56:49 AM  
Modified: 8/3/2015 10:19:45 AM

**Electropherogram Summary Continued ...**



**Overall Results for sample 9 : SH10\_NT1**

RNA Area: 55.8                      rRNA Ratio [23s / 16s]: 2.3  
RNA Concentration: 306 pg/μl              RNA Integrity Number (RIN): 3.4 (B.02.08)

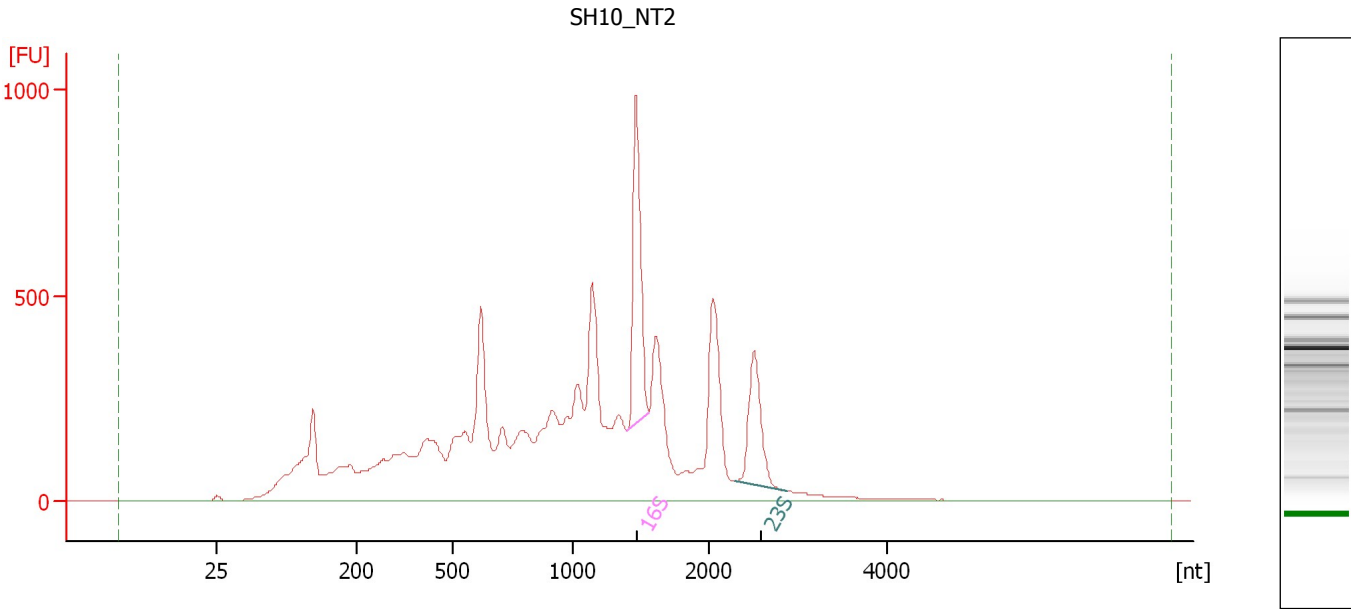
**Fragment table for sample 9 : SH10\_NT1**

Name	Start Size [nt]	End Size [nt]	Area	% of total Area
16S	1,172	1,350	1.2	2.1
23S	1,993	2,452	2.7	4.8

Assay Class: Prokaryote Total RNA Pico  
Data Path: C:\...ents and Settings\Bioanalyzer\2015-08-03\2015-08-03\_001.xad

Created: 8/3/2015 9:56:49 AM  
Modified: 8/3/2015 10:19:45 AM

**Electropherogram Summary Continued ...**



**Overall Results for sample 10 : SH10\_NT2**

RNA Area: 10,510.0                      rRNA Ratio [23s / 16s]: 0.6  
RNA Concentration: 57,641 pg/μl                      RNA Integrity Number (RIN): 5 (B.02.08)

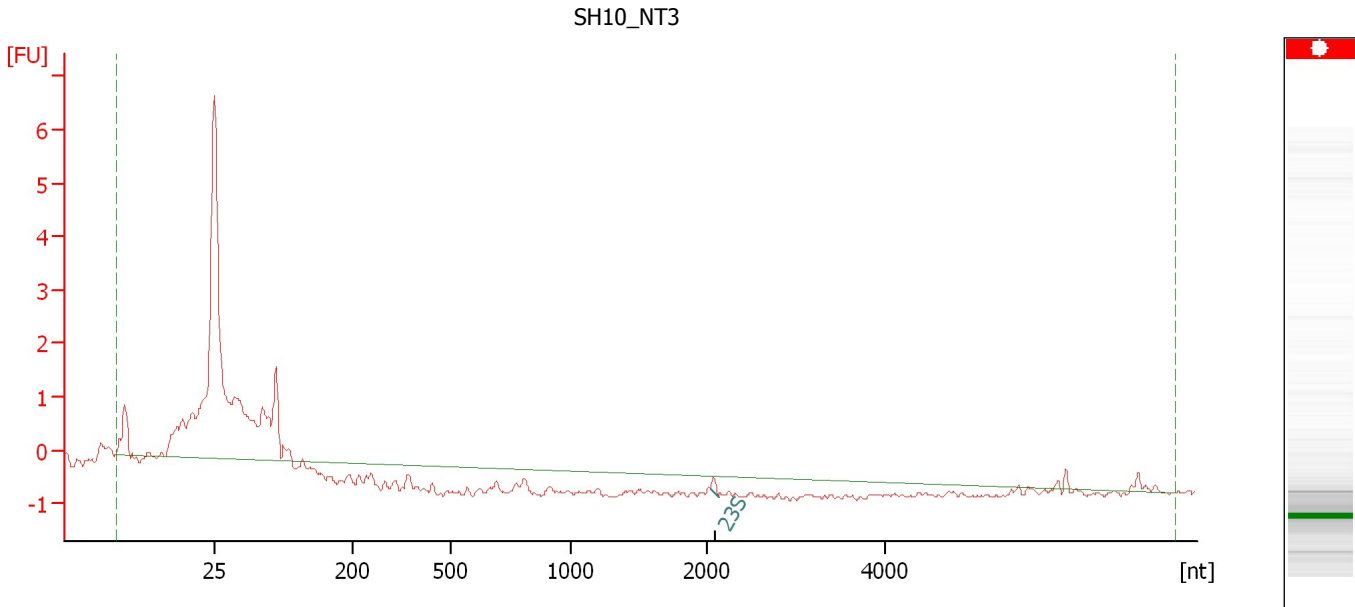
**Fragment table for sample 10 : SH10\_NT2**

Name	Start Size [nt]	End Size [nt]	Area	% of total Area
16S	1,398	1,546	784.4	7.5
23S	2,274	2,873	437.8	4.2

Assay Class: Prokaryote Total RNA Pico  
Data Path: C:\...ents and Settings\Bioanalyzer\2015-08-03\2015-08-03\_001.xad

Created: 8/3/2015 9:56:49 AM  
Modified: 8/3/2015 10:19:45 AM

**Electropherogram Summary Continued ...**



**Overall Results for sample 11 : SH10\_NT3**

RNA Area: 10.5                      rRNA Ratio [23s / 16s]: 0.0  
RNA Concentration: 58 pg/μl              RNA Integrity Number (RIN): N/A (B.02.08)

**Fragment table for sample 11 : SH10\_NT3**

Name	Start Size [nt]	End Size [nt]	Area	% of total Area
23S	2,034	2,130	0.1	1.3

Assay Class: Prokaryote Total RNA Pico  
Data Path: C:\...ents and Settings\Bioanalyzer\2015-08-03\2015-08-03\_001.xad

Created: 8/3/2015 9:56:49 AM  
Modified: 8/3/2015 10:19:45 AM

**Gel Image**

