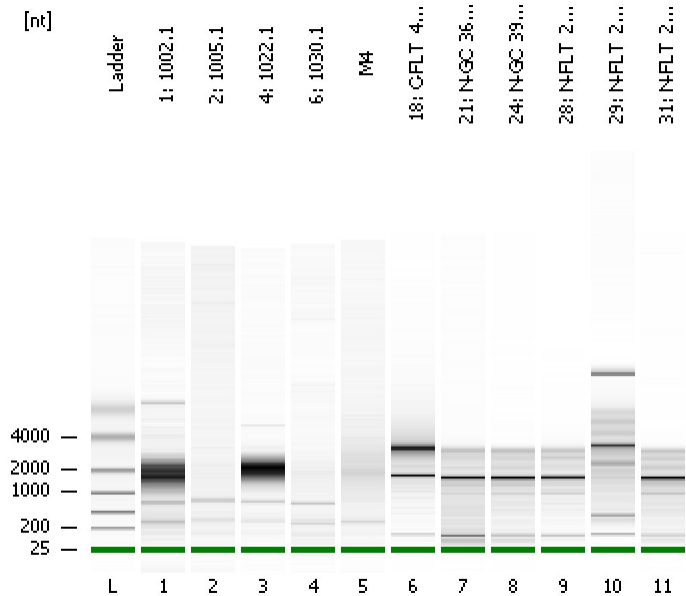


Assay Class: mRNA Pico
Data Path: C:\...ents and Settings\Bioanalyzer\2015-08-04\2015-08-04_001.xad

Created: 8/4/2015 2:55:53 PM
Modified: 8/4/2015 3:21:51 PM

Electrophoresis File Run Summary



Instrument Information:

Instrument Name: DE13701086 Firmware: C.01.069
Serial#: DE13701086 Type: G2938B

Assay Information:

Assay Origin Path: C:\Program Files\Agilent\2100 bioanalyzer\2100 expert\assays\RNA\mRNA Pico Series II.xsy

Assay Class: mRNA Pico
Version: 2.6
Assay Comments: mRNA Analysis pg sensitivity

© Copyright 2003 - 2009 Agilent Technologies, Inc.

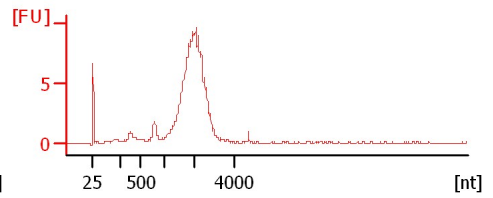
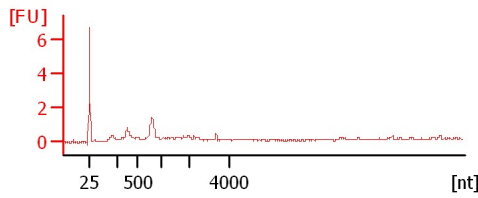
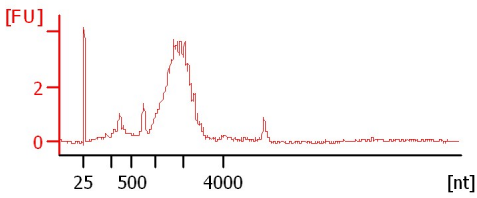
Chip Information:

Chip Lot #: Reagent Kit Lot #: Chip Comments:

1: 1002.1

2: 1005.1

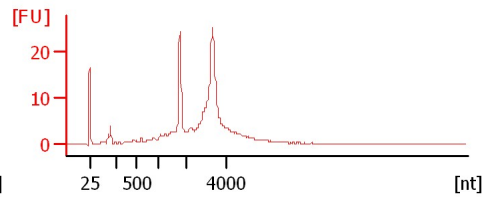
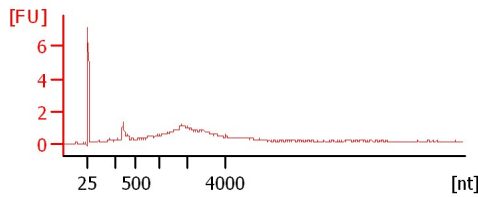
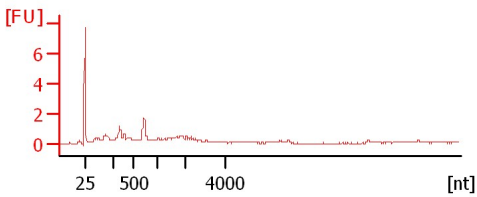
4: 1022.1



6: 1030.1

M4

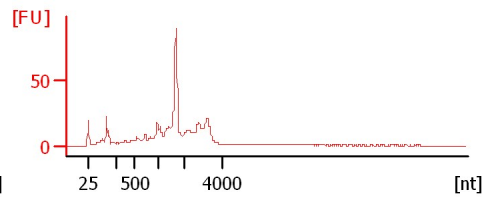
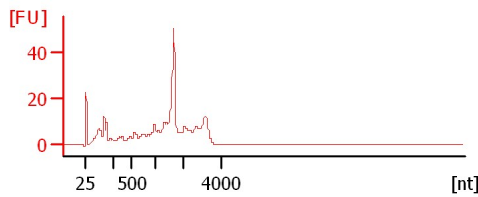
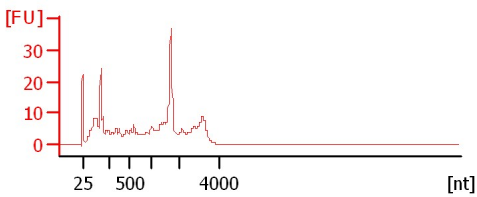
18: C-FLT_4 (1:160)



21: N-GC_36 (1:280)

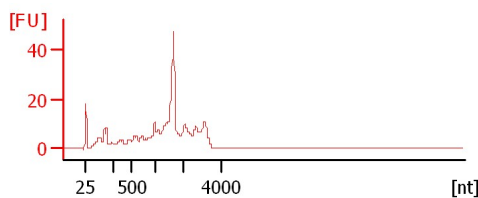
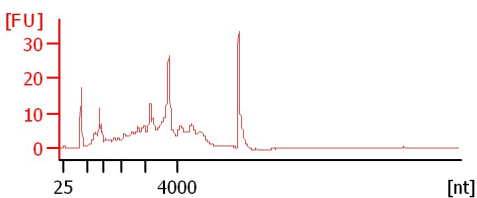
24: N-GC_39 (1:453)

28: N-FLT_25 (1:287)



29: N-FLT_26 (1:85)

31: N-FLT_28 (1:433)



Assay Class: mRNA Pico
Data Path: C:\...ents and Settings\Bioanalyzer\2015-08-04\2015-08-04_001.xad

Created: 8/4/2015 2:55:53 PM
Modified: 8/4/2015 3:21:51 PM

Electrophoresis File Run Summary (Chip Summary)

Sample Name	Sample Comment	Status	Result Label	Result Color
1: 1002.1		✓		
2: 1005.1		✓		
4: 1022.1		✓		
6: 1030.1		✓		
M4		✓		
18: C-FLT_4 (1:160)		✓		
21: N-GC_36 (1:280)		✓		
24: N-GC_39 (1:453)		✓		
28: N-FLT_25 (1:287)		✓		
29: N-FLT_26 (1:85)		✓		
31: N-FLT_28 (1:433)		✓		
Ladder		✓		

Chip Lot #**Reagent Kit Lot #****Chip Comments :**

Assay Class: mRNA Pico
Data Path: C:\...ents and Settings\Bioanalyzer\2015-08-04\2015-08-04_001.xad

Created: 8/4/2015 2:55:53 PM
Modified: 8/4/2015 3:21:51 PM

Electrophoresis Assay Details

General Analysis Settings

Number of Available Sample and Ladder Wells (Max.) : 12
Minimum Visible Range [s] : 14
Maximum Visible Range [s] : 85
Start Analysis Time Range [s] : 15
End Analysis Time Range [s] : 84
Ladder Concentration [pg/ μ l] : 1000
Lower Marker Concentration [pg/ μ l] : 0
Upper Marker Concentration [pg/ μ l] : 0
Used Lower Marker for Quantitation
Standard Curve Fit is Logarithmic
Show Data Aligned to Lower Marker

Integrator Settings

Integration Start Time [s] : 15
Integration End Time [s] : 84
Slope Threshold : 0.2
Height Threshold [FU] : 0.5
Area Threshold : 0.1
Width Threshold [s] : 0.2
Baseline Plateau [s] : 0.5

Filter Settings

Filter Width [s] : 0.5
Polynomial Order : 4

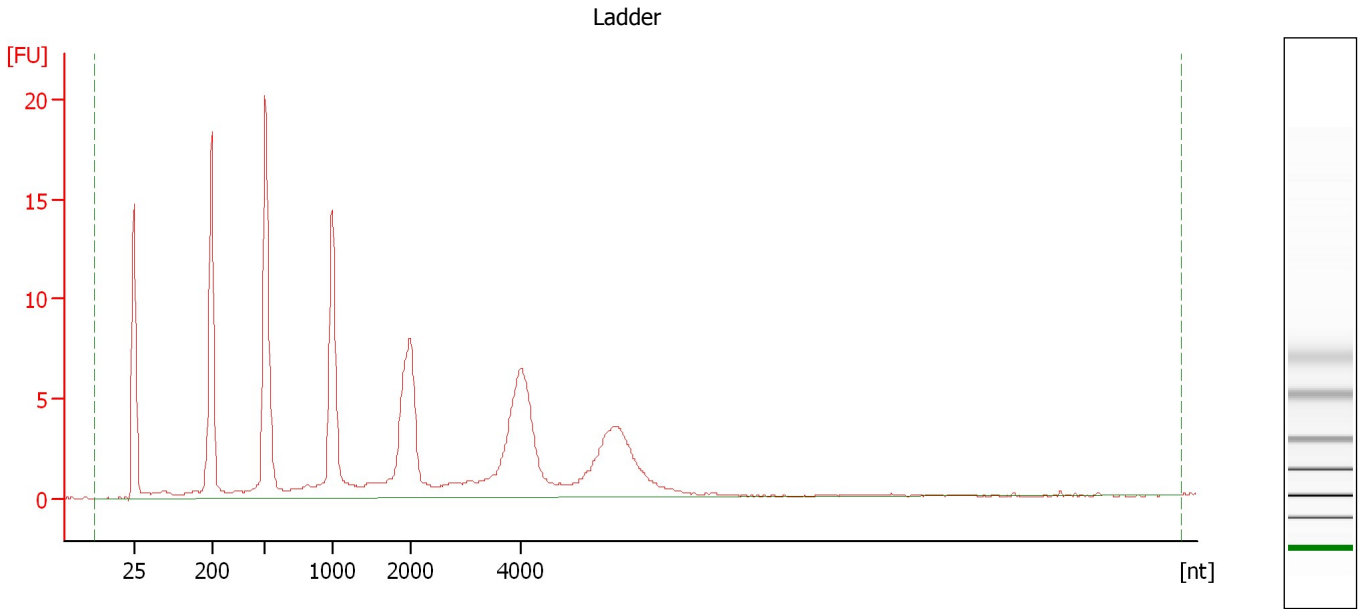
Ladder

Ladder Peak	Size
1	25
2	200
3	500
4	1000
5	2000
6	4000

Assay Class: mRNA Pico
Data Path: C:\...ents and Settings\Bioanalyzer\2015-08-04\2015-08-04_001.xad

Created: 8/4/2015 2:55:53 PM
Modified: 8/4/2015 3:21:51 PM

Electropherogram Summary



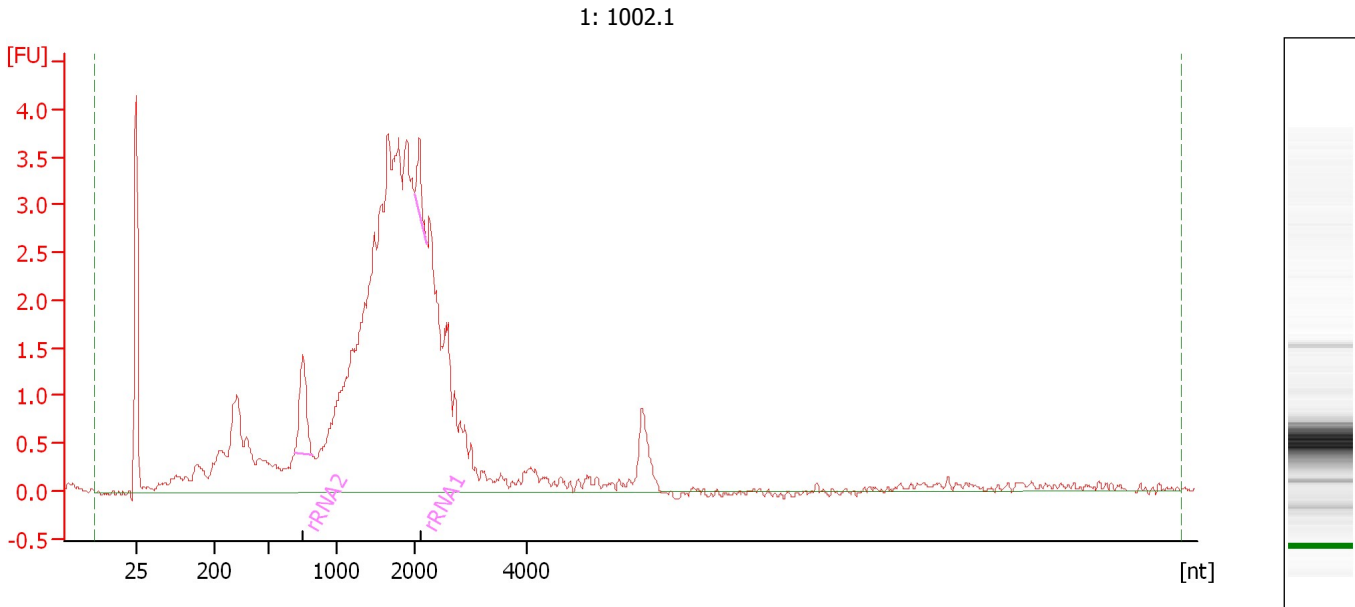
Overall Results for Ladder

RNA Area: 183.1 RNA Concentration: 1,000 pg/μl

Assay Class: mRNA Pico
Data Path: C:\...ents and Settings\Bioanalyzer\2015-08-04\2015-08-04_001.xad

Created: 8/4/2015 2:55:53 PM
Modified: 8/4/2015 3:21:51 PM

Electropherogram Summary Continued ...



Overall Results for sample 1 : 1: 1002.1

RNA Area: 75.3 rRNA Contamination: 3.2 %
RNA Concentration: 411 pg/μl

Fragment table for sample 1 : 1: 1002.1

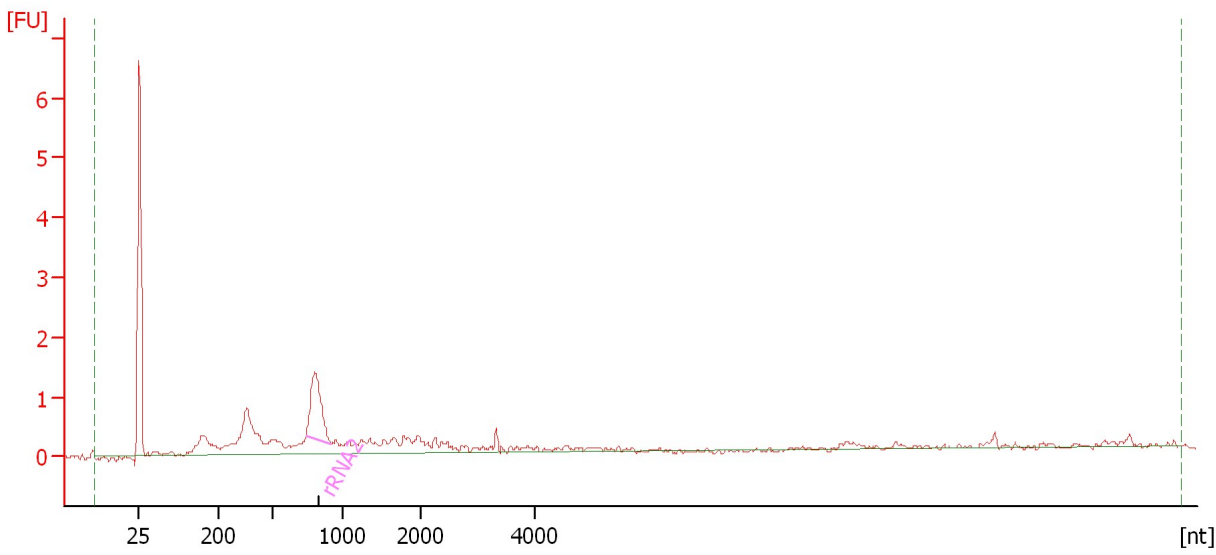
Name	Start Size [nt]	End Size [nt]	Area	% of total Area
rRNA2	692	822	1.7	2.3
rRNA1	2,002	2,202	0.7	0.9

Assay Class: mRNA Pico
Data Path: C:\...ents and Settings\Bioanalyzer\2015-08-04\2015-08-04_001.xad

Created: 8/4/2015 2:55:53 PM
Modified: 8/4/2015 3:21:51 PM

Electropherogram Summary Continued ...

2: 1005.1



Overall Results for sample 2 : 2: 1005.1

RNA Area: 17.2 rRNA Contamination: 16.5 %
RNA Concentration: 94 pg/μl

Fragment table for sample 2 : 2: 1005.1

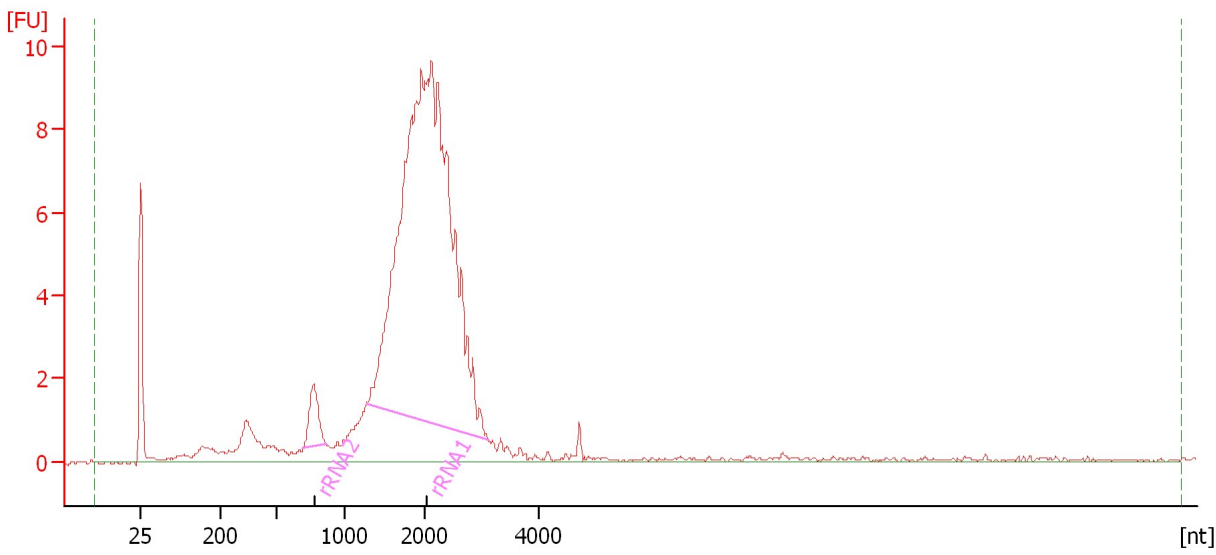
Name	Start Size [nt]	End Size [nt]	Area	% of total Area
rRNA2	738	919	2.8	16.5

Assay Class: mRNA Pico
Data Path: C:\...ents and Settings\Bioanalyzer\2015-08-04\2015-08-04_001.xad

Created: 8/4/2015 2:55:53 PM
Modified: 8/4/2015 3:21:51 PM

Electropherogram Summary Continued ...

4: 1022.1



Overall Results for sample 3 : 4: 1022.1

RNA Area: 134.2 rRNA Contamination: 66.9 %
RNA Concentration: 733 pg/μl

Fragment table for sample 3 : 4: 1022.1

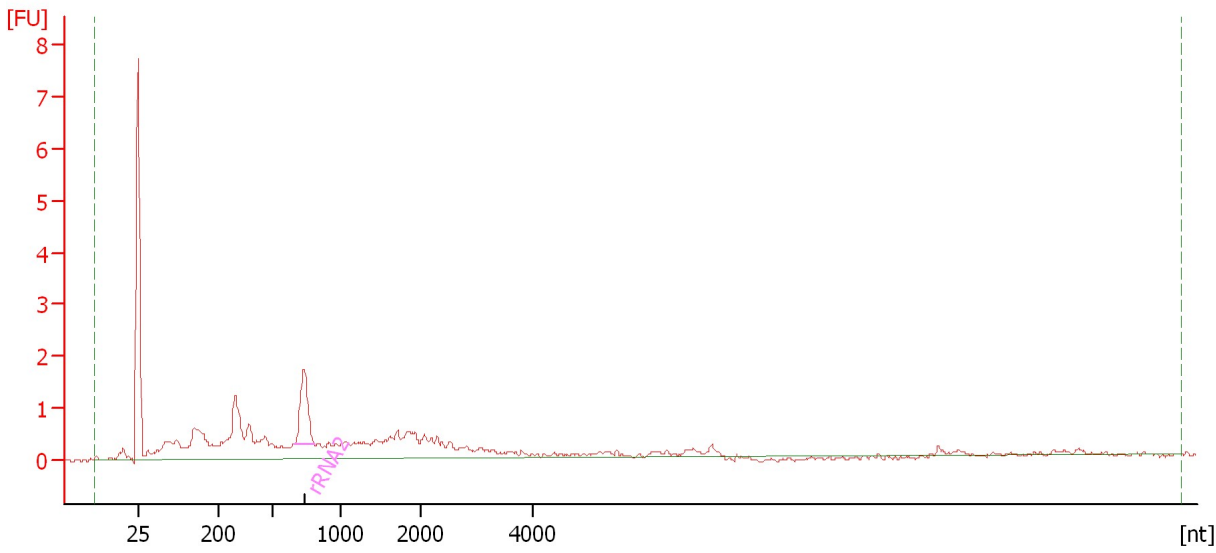
Name	Start Size [nt]	End Size [nt]	Area	% of total Area
rRNA2	703	865	3.2	2.4
rRNA1	1,268	3,116	86.5	64.4

Assay Class: mRNA Pico
Data Path: C:\...ents and Settings\Bioanalyzer\2015-08-04\2015-08-04_001.xad

Created: 8/4/2015 2:55:53 PM
Modified: 8/4/2015 3:21:51 PM

Electropherogram Summary Continued ...

6: 1030.1



Overall Results for sample 4 : 6: 1030.1

RNA Area: 31.5 rRNA Contamination: 8.6 %
RNA Concentration: 172 pg/μl

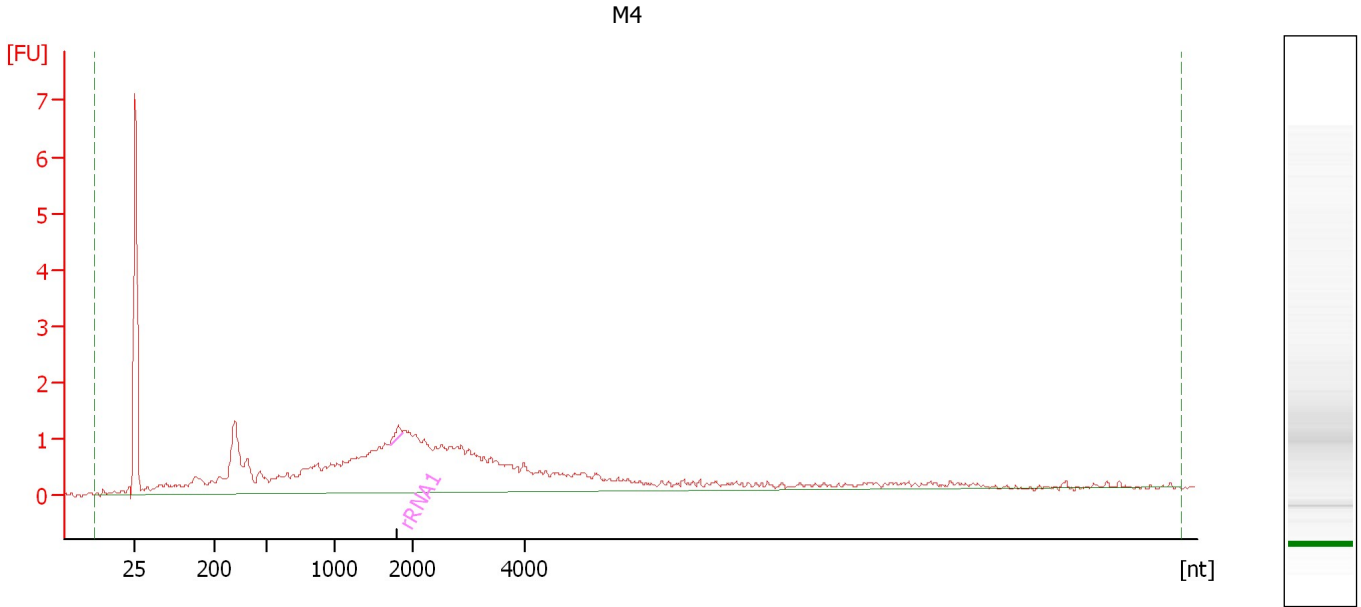
Fragment table for sample 4 : 6: 1030.1

Name	Start Size [nt]	End Size [nt]	Area	% of total Area
rRNA2	671	812	2.7	8.6

Assay Class: mRNA Pico
Data Path: C:\...ents and Settings\Bioanalyzer\2015-08-04\2015-08-04_001.xad

Created: 8/4/2015 2:55:53 PM
Modified: 8/4/2015 3:21:51 PM

Electropherogram Summary Continued ...



Overall Results for sample 5 : M4

RNA Area: 47.6 rRNA Contamination: 0.5 %
RNA Concentration: 260 pg/μl

Fragment table for sample 5 : M4

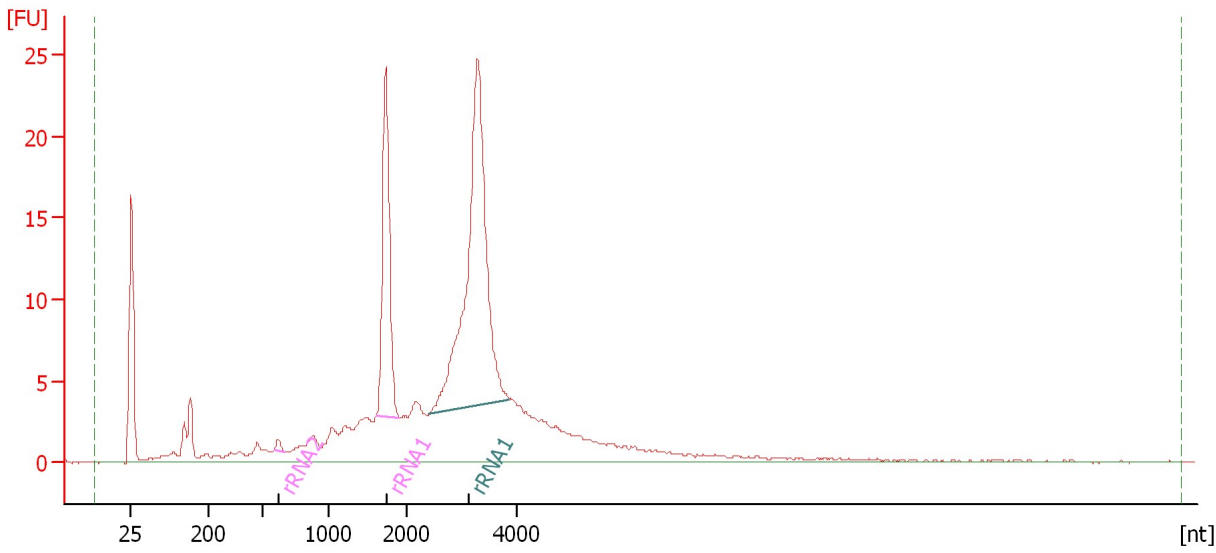
Name	Start Size [nt]	End Size [nt]	Area	% of total Area
rRNA1	1,706	1,859	0.2	0.5

Assay Class: mRNA Pico
Data Path: C:\...ents and Settings\Bioanalyzer\2015-08-04\2015-08-04_001.xad

Created: 8/4/2015 2:55:53 PM
Modified: 8/4/2015 3:21:51 PM

Electropherogram Summary Continued ...

18: C-FLT_4 (1:160)



Overall Results for sample 6 : 18: C-FLT 4 (1:160)

RNA Area: 278.8 rRNA Contamination: 37.6 %
RNA Concentration: 1,523 pg/μl

Fragment table for sample 6 : 18: C-FLT 4 (1:160)

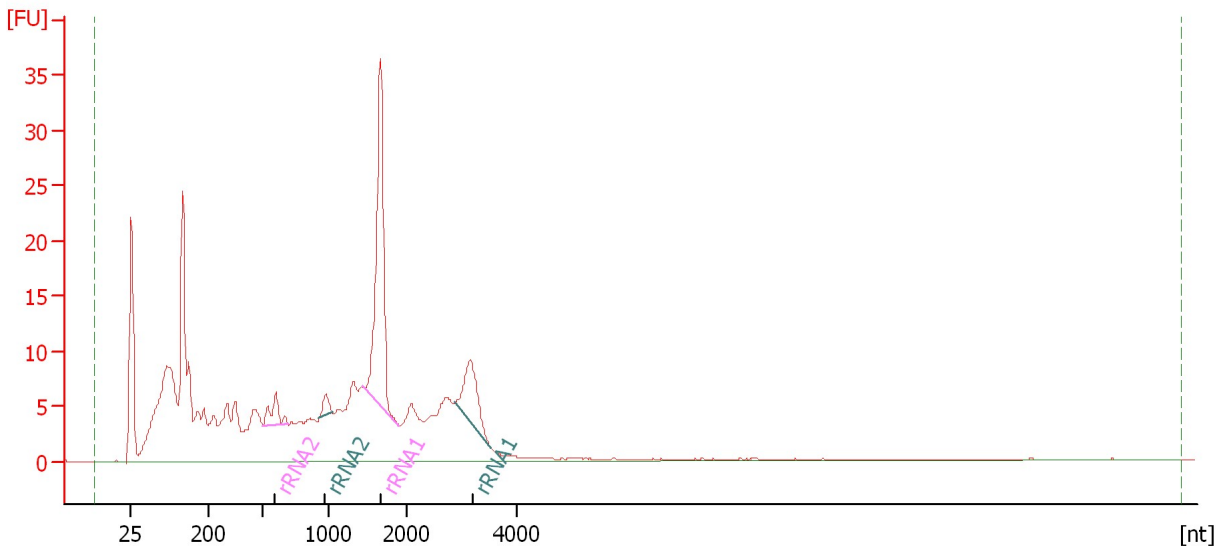
Name	Start Size [nt]	End Size [nt]	Area	% of total Area
rRNA2	592	670	0.8	0.3
rRNA1	1,617	1,905	31.5	11.3
rRNA1	2,432	3,868	72.6	26.0

Assay Class: mRNA Pico
Data Path: C:\...ents and Settings\Bioanalyzer\2015-08-04\2015-08-04_001.xad

Created: 8/4/2015 2:55:53 PM
Modified: 8/4/2015 3:21:51 PM

Electropherogram Summary Continued ...

21: N-GC_36 (1:280)



Overall Results for sample 7 : 21: N-GC 36 (1:280)

RNA Area: 443.6 rRNA Contamination: 16.0 %
RNA Concentration: 2,423 pg/μl

Fragment table for sample 7 : 21: N-GC 36 (1:280)

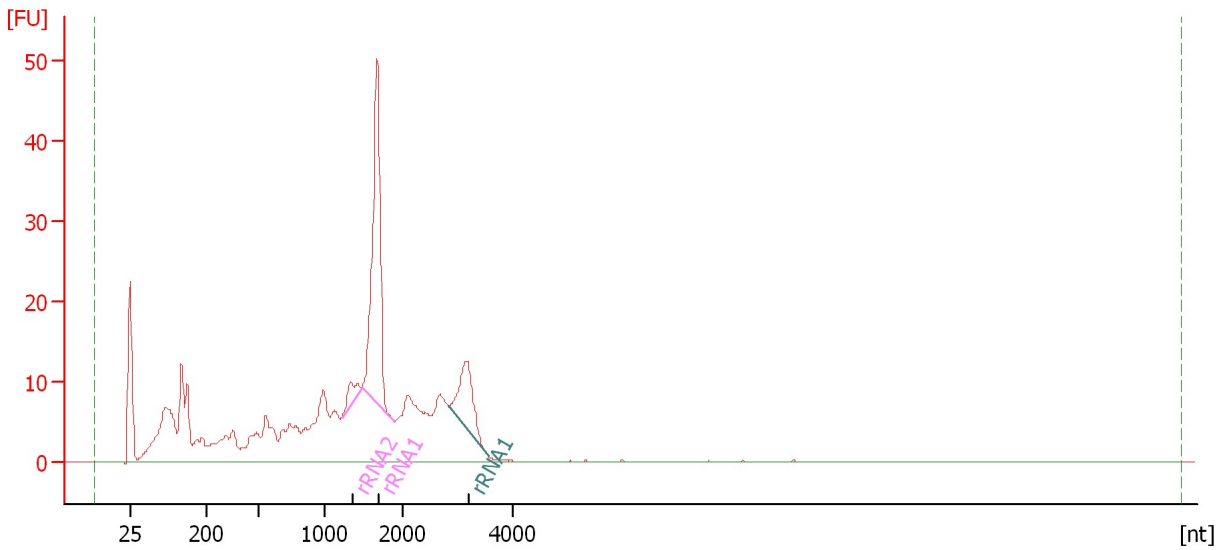
Name	Start Size [nt]	End Size [nt]	Area	% of total Area
rRNA2	508	694	6.2	1.4
rRNA2	934	1,051	2.6	0.6
rRNA1	1,432	1,905	48.3	10.9
rRNA1	2,896	3,549	13.9	3.1

Assay Class: mRNA Pico
Data Path: C:\...ents and Settings\Bioanalyzer\2015-08-04\2015-08-04_001.xad

Created: 8/4/2015 2:55:53 PM
Modified: 8/4/2015 3:21:51 PM

Electropherogram Summary Continued ...

24: N-GC_39 (1:453)



Overall Results for sample 8 : 24: N-GC 39 (1:453)

RNA Area: 470.1 rRNA Contamination: 20.6 %
RNA Concentration: 2,568 pg/μl

Fragment table for sample 8 : 24: N-GC 39 (1:453)

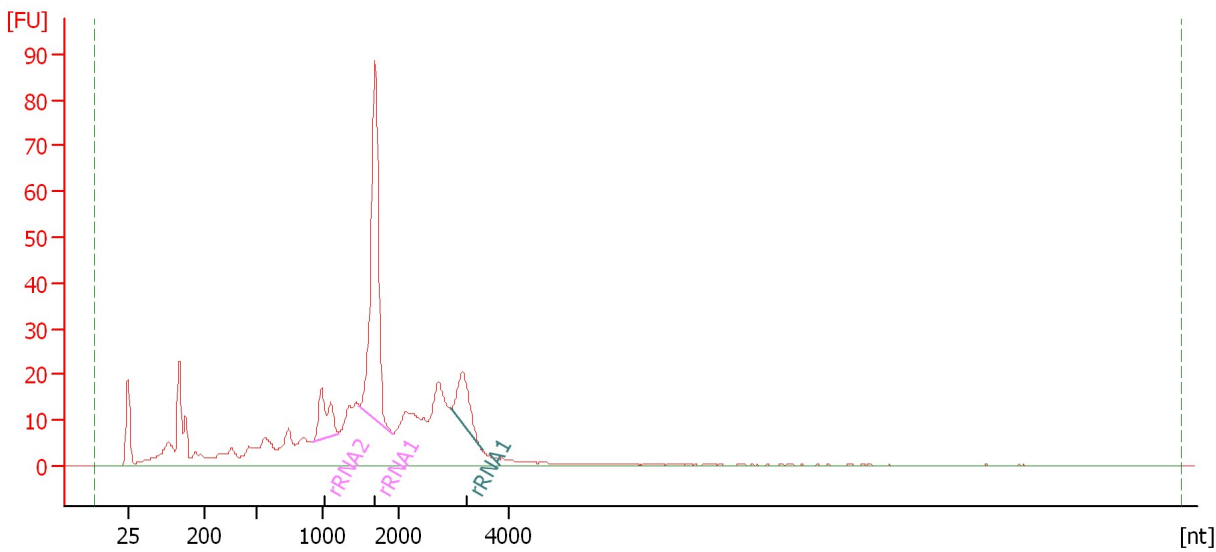
Name	Start Size [nt]	End Size [nt]	Area	% of total Area
rRNA2	1,210	1,469	5.0	1.1
rRNA1	1,469	1,883	71.0	15.1
rRNA1	2,856	3,556	21.0	4.5

Assay Class: mRNA Pico
Data Path: C:\...ents and Settings\Bioanalyzer\2015-08-04\2015-08-04_001.xad

Created: 8/4/2015 2:55:53 PM
Modified: 8/4/2015 3:21:51 PM

Electropherogram Summary Continued ...

28: N-FLT_25 (1:287)



Overall Results for sample 9 : 28: N-FLT 25 (1:287)

RNA Area: 691.3 rRNA Contamination: 26.0 %
RNA Concentration: 3,777 pg/μl

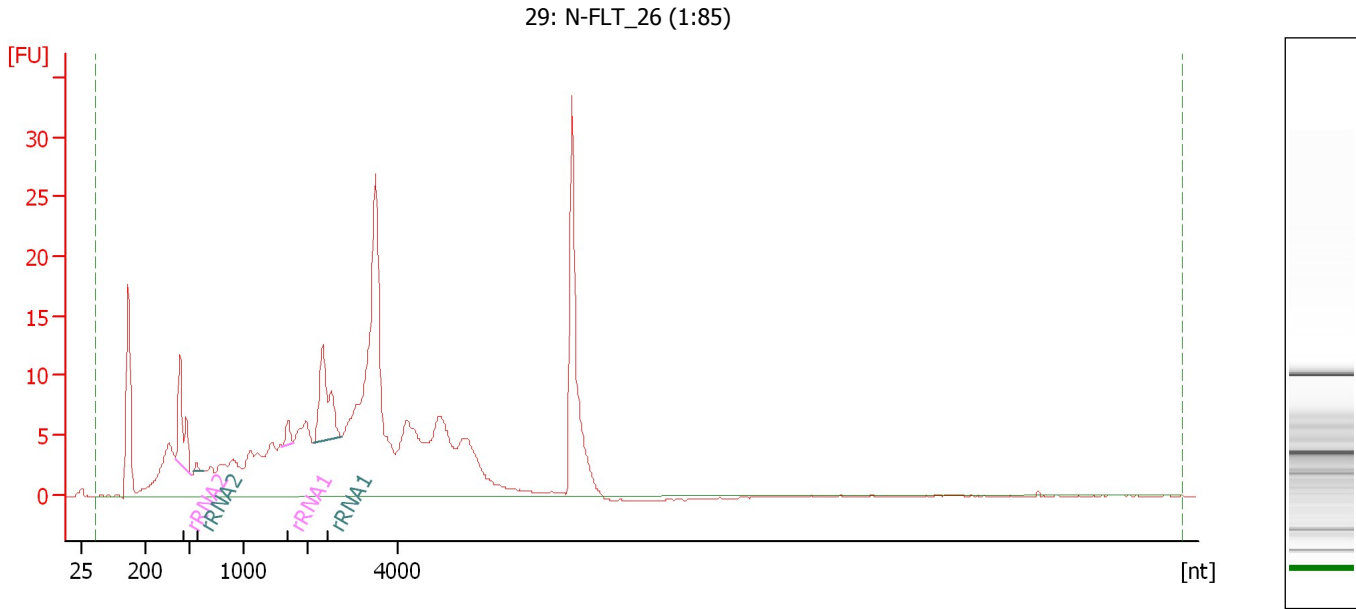
Fragment table for sample 9 : 28: N-FLT 25 (1:287)

Name	Start Size [nt]	End Size [nt]	Area	% of total Area
rRNA2	919	1,205	25.6	3.7
rRNA1	1,475	1,902	127.7	18.5
rRNA1	2,932	3,519	26.2	3.8

Assay Class: mRNA Pico
Data Path: C:\...ents and Settings\Bioanalyzer\2015-08-04\2015-08-04_001.xad

Created: 8/4/2015 2:55:53 PM
Modified: 8/4/2015 3:21:51 PM

Electropherogram Summary Continued ...



Overall Results for sample 10 : 29: N-FLT_26 (1:85)

RNA Area: 441.8 rRNA Contamination: 8.5 %
RNA Concentration: 2,414 pg/μl

Fragment table for sample 10 : 29: N-FLT_26 (1:85)

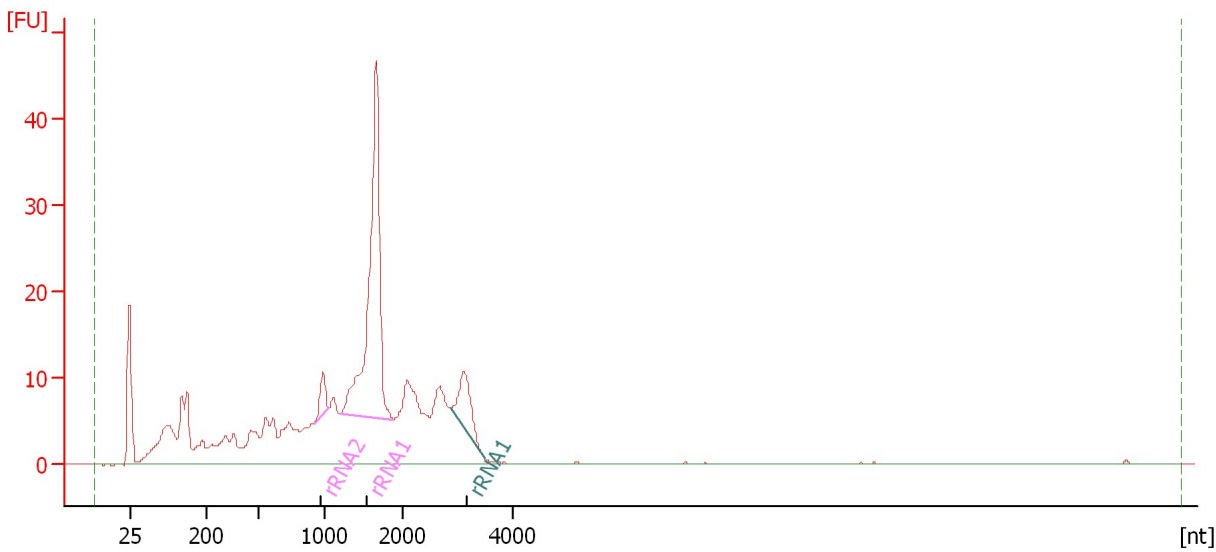
Name	Start Size [nt]	End Size [nt]	Area	% of total Area
rRNA2	407	522	16.5	3.7
rRNA2	551	631	0.6	0.1
rRNA1	1,602	1,777	2.3	0.5
rRNA1	2,126	2,741	18.2	4.1

Assay Class: mRNA Pico
Data Path: C:\...ents and Settings\Bioanalyzer\2015-08-04\2015-08-04_001.xad

Created: 8/4/2015 2:55:53 PM
Modified: 8/4/2015 3:21:51 PM

Electropherogram Summary Continued ...

31: N-FLT_28 (1:433)



Overall Results for sample 11 : 31: N-FLT_28 (1:433)

RNA Area: 446.3 rRNA Contamination: 25.1 %
RNA Concentration: 2,438 pg/μl

Fragment table for sample 11 : 31: N-FLT_28 (1:433)

Name	Start Size [nt]	End Size [nt]	Area	% of total Area
rRNA2	917	1,045	6.4	1.4
rRNA1	1,200	1,872	91.2	20.4
rRNA1	2,885	3,483	14.4	3.2

Assay Class: mRNA Pico
Data Path: C:\...ents and Settings\Bioanalyzer\2015-08-04\2015-08-04_001.xad

Created: 8/4/2015 2:55:53 PM
Modified: 8/4/2015 3:21:51 PM

Gel Image

