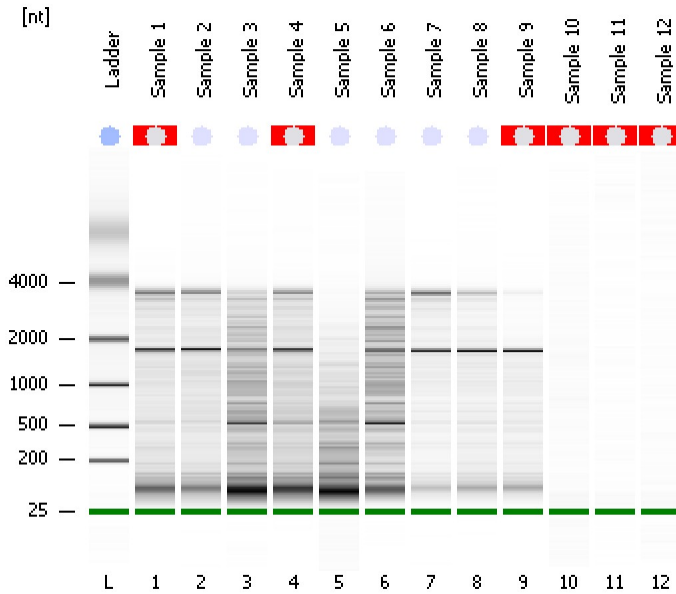


Assay Class: Eukaryote Total RNA Nano
Data Path: C:\...ents and Settings\Bioanalyzer\2015-08-05\2015-08-05_001.xad

Created: 8/5/2015 2:28:56 PM
Modified: 8/5/2015 2:52:47 PM

Electrophoresis File Run Summary



Instrument Information:

Instrument Name: DE13701086 Firmware: C.01.069
Serial#: DE13701086 Type: G2938B

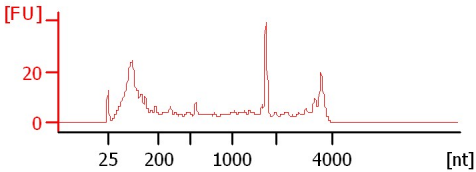
Assay Information:

Assay Origin Path: C:\Program Files\Agilent\2100 bioanalyzer\2100 expert\assays\RNA\Eukaryote Total RNA Nano Series II.xsy
Assay Class: Eukaryote Total RNA Nano
Version: 2.6
Assay Comments: Total RNA Analysis ng sensitivity (Eukaryote)
© Copyright 2003 - 2009 Agilent Technologies, Inc.

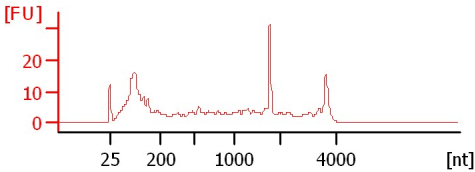
Chip Information:

Chip Lot #:
Reagent Kit Lot #:
Chip Comments:

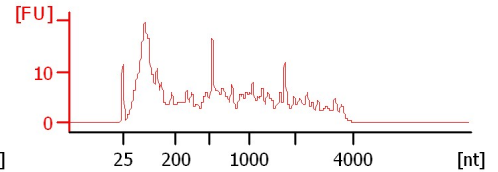
Sample 1
RIN N/A



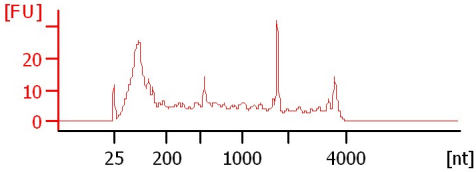
Sample 2
RIN: 5.70



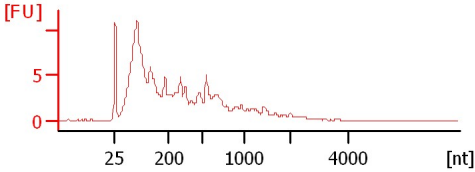
Sample 3
RIN: 2.80



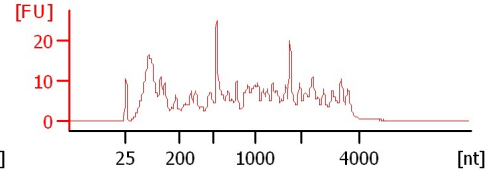
Sample 4
RIN N/A



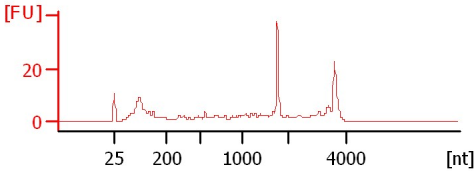
Sample 5
RIN: 2.50



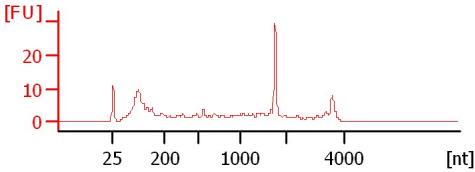
Sample 6
RIN: 3.20



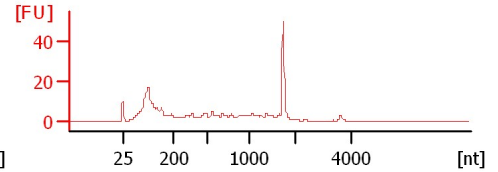
Sample 7
RIN: 6.70



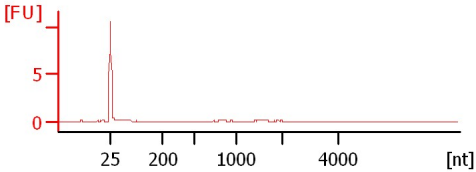
Sample 8
RIN: 6.20



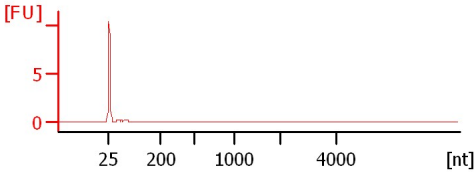
Sample 9
RIN N/A



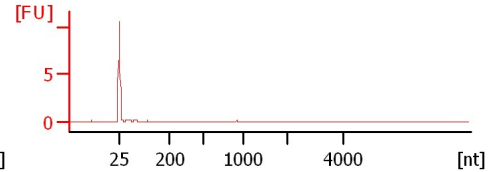
Sample 10
RIN N/A



Sample 11
RIN N/A



Sample 12
RIN N/A



Assay Class: Eukaryote Total RNA Nano
Data Path: C:\...ents and Settings\Bioanalyzer\2015-08-05\2015-08-05_001.xad

Created: 8/5/2015 2:28:56 PM
Modified: 8/5/2015 2:52:47 PM

Electrophoresis File Run Summary (Chip Summary)

Sample Name	Sample Comment	Status	Result Label	Result Color
Sample 1		✓	RIN N/A	
Sample 2		✓	RIN: 5.70	
Sample 3		✓	RIN: 2.80	
Sample 4		✓	RIN N/A	
Sample 5		✓	RIN: 2.50	
Sample 6		✓	RIN: 3.20	
Sample 7		✓	RIN: 6.70	
Sample 8		✓	RIN: 6.20	
Sample 9		✓	RIN N/A	
Sample 10		✓	RIN N/A	
Sample 11		✓	RIN N/A	
Sample 12		✓	RIN N/A	
Ladder		✓	All Other Samples	

Chip Lot #

Reagent Kit Lot #

Chip Comments :

Assay Class: Eukaryote Total RNA Nano
Data Path: C:\...ents and Settings\Bioanalyzer\2015-08-05\2015-08-05_001.xad

Created: 8/5/2015 2:28:56 PM
Modified: 8/5/2015 2:52:47 PM

Electrophoresis Assay Details

General Analysis Settings

Number of Available Sample and Ladder Wells (Max.) : 13
Minimum Visible Range [s] : 17
Maximum Visible Range [s] : 70
Start Analysis Time Range [s] : 19
End Analysis Time Range [s] : 69
Ladder Concentration [ng/μl] : 150
Lower Marker Concentration [ng/μl] : 0
Upper Marker Concentration [ng/μl] : 0
Used Lower Marker for Quantitation
Standard Curve Fit is Logarithmic
Show Data Aligned to Lower Marker

Integrator Settings

Integration Start Time [s] : 19
Integration End Time [s] : 69
Slope Threshold : 0.6
Height Threshold [FU] : 0.5
Area Threshold : 0.2
Width Threshold [s] : 0.5
Baseline Plateau [s] : 6

Filter Settings

Filter Width [s] : 0.5
Polynomial Order : 4

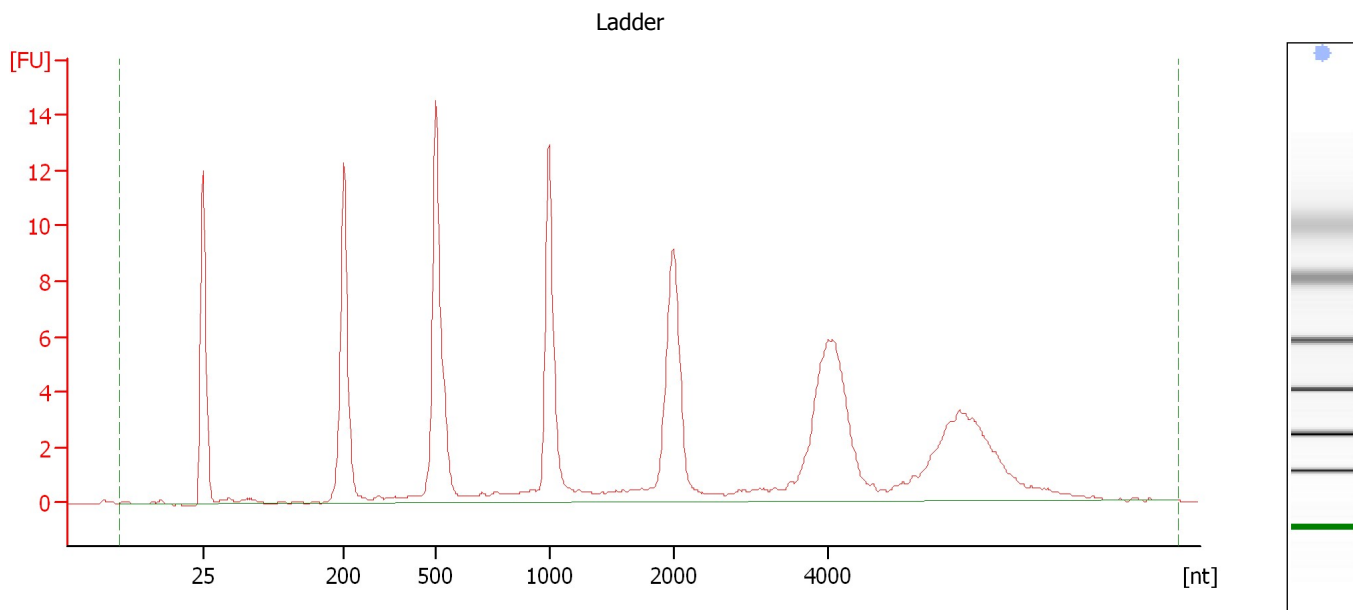
Ladder

Ladder Peak	Size
1	25
2	200
3	500
4	1000
5	2000
6	4000

Assay Class: Eukaryote Total RNA Nano
Data Path: C:\...ents and Settings\Bioanalyzer\2015-08-05\2015-08-05_001.xad

Created: 8/5/2015 2:28:56 PM
Modified: 8/5/2015 2:52:47 PM

Electropherogram Summary



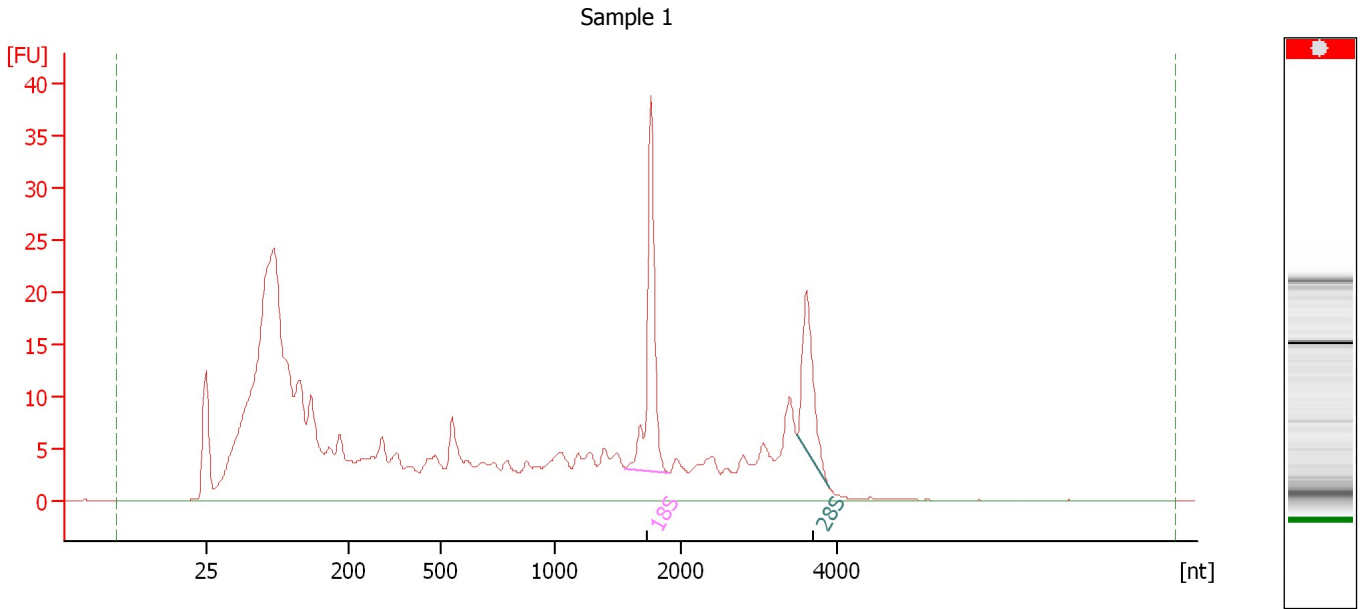
Overall Results for Ladder

RNA Area:	122.8	Result Flagging Color:	
RNA Concentration:	150 ng/ μ l	Result Flagging Label:	All Other Samples

Assay Class: Eukaryote Total RNA Nano
Data Path: C:\...ents and Settings\Bioanalyzer\2015-08-05\2015-08-05_001.xad

Created: 8/5/2015 2:28:56 PM
Modified: 8/5/2015 2:52:47 PM

Electropherogram Summary Continued ...



Overall Results for sample 1 : Sample 1

RNA Area:	488.5	RNA Integrity Number (RIN):	N/A (B.02.08)
RNA Concentration:	597 ng/μl	Result Flagging Color:	
rRNA Ratio [28s / 18s]:	0.5	Result Flagging Label:	RIN N/A

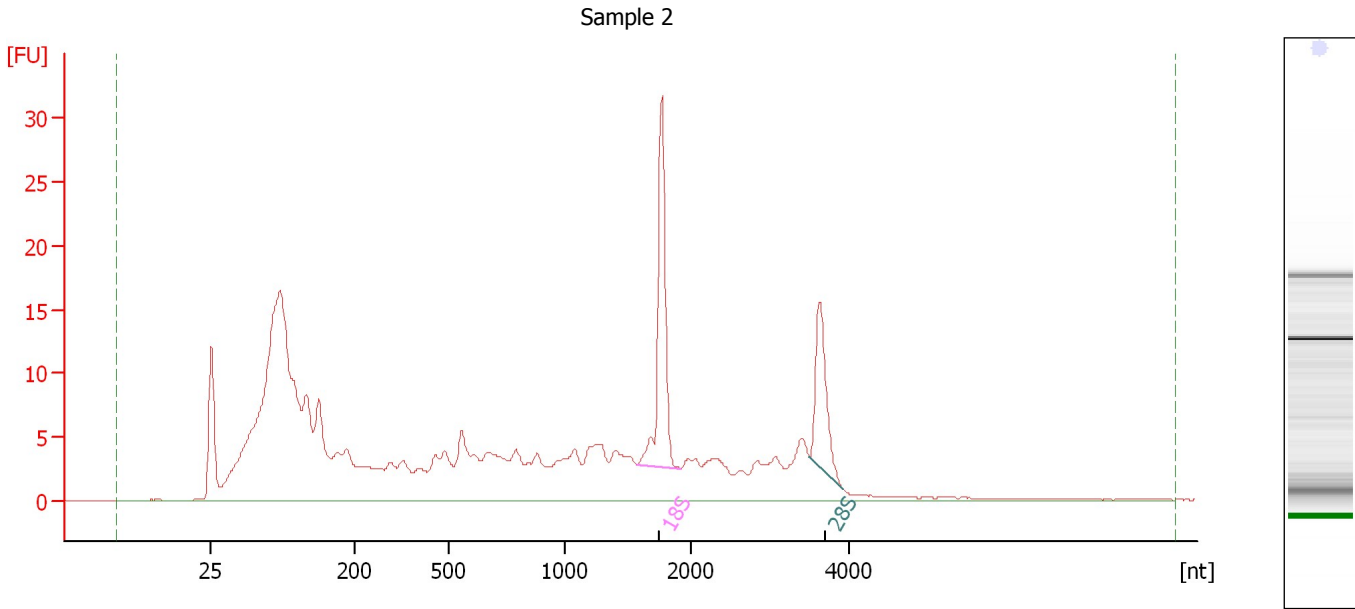
Fragment table for sample 1 : Sample 1

Name	Start Size [nt]	End Size [nt]	Area	% of total Area
18S	1,559	1,900	32.8	6.7
28S	3,491	3,887	17.0	3.5

Assay Class: Eukaryote Total RNA Nano
Data Path: C:\...ents and Settings\Bioanalyzer\2015-08-05\2015-08-05_001.xad

Created: 8/5/2015 2:28:56 PM
Modified: 8/5/2015 2:52:47 PM

Electropherogram Summary Continued ...



Overall Results for sample 2 : Sample 2

RNA Area: 366.0 RNA Integrity Number (RIN): 5.7 (B.02.08)
RNA Concentration: 447 ng/μl Result Flagging Color:
rRNA Ratio [28s / 18s]: 0.6 Result Flagging Label: RIN: 5.70

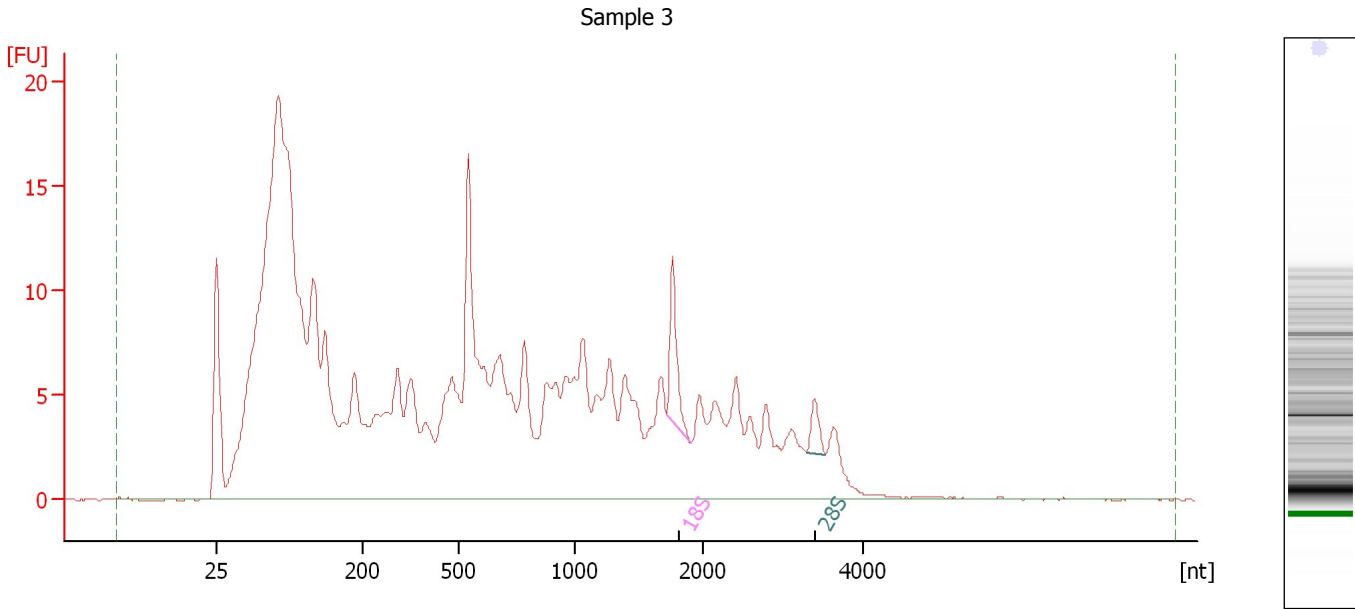
Fragment table for sample 2 : Sample 2

Name	Start Size [nt]	End Size [nt]	Area	% of total Area
18S	1,574	1,912	24.8	6.8
28S	3,493	3,925	13.8	3.8

Assay Class: Eukaryote Total RNA Nano
Data Path: C:\...ents and Settings\Bioanalyzer\2015-08-05\2015-08-05_001.xad

Created: 8/5/2015 2:28:56 PM
Modified: 8/5/2015 2:52:47 PM

Electropherogram Summary Continued ...



Overall Results for sample 3 : Sample 3

RNA Area:	445.3	RNA Integrity Number (RIN):	2.8 (B.02.08)
RNA Concentration:	544 ng/μl	Result Flagging Color:	
rRNA Ratio [28s / 18s]:	0.3	Result Flagging Label:	RIN: 2.80

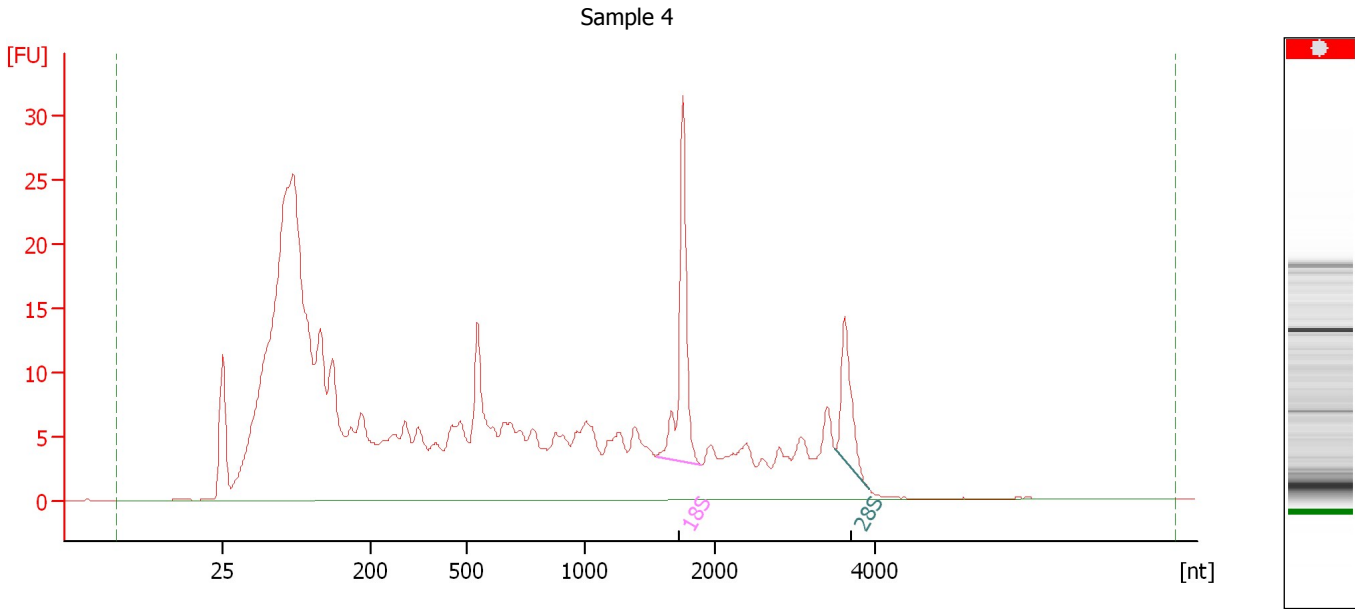
Fragment table for sample 3 : Sample 3

Name	Start Size [nt]	End Size [nt]	Area	% of total Area
18S	1,707	1,899	6.3	1.4
28S	3,279	3,519	2.0	0.5

Assay Class: Eukaryote Total RNA Nano
 Data Path: C:\...ents and Settings\Bioanalyzer\2015-08-05\2015-08-05_001.xad

Created: 8/5/2015 2:28:56 PM
 Modified: 8/5/2015 2:52:47 PM

Electropherogram Summary Continued ...



Overall Results for sample 4 : Sample 4

RNA Area:	536.9	RNA Integrity Number (RIN):	N/A (B.02.08)
RNA Concentration:	656 ng/μl	Result Flagging Color:	
rRNA Ratio [28s / 18s]:	0.4	Result Flagging Label:	RIN N/A

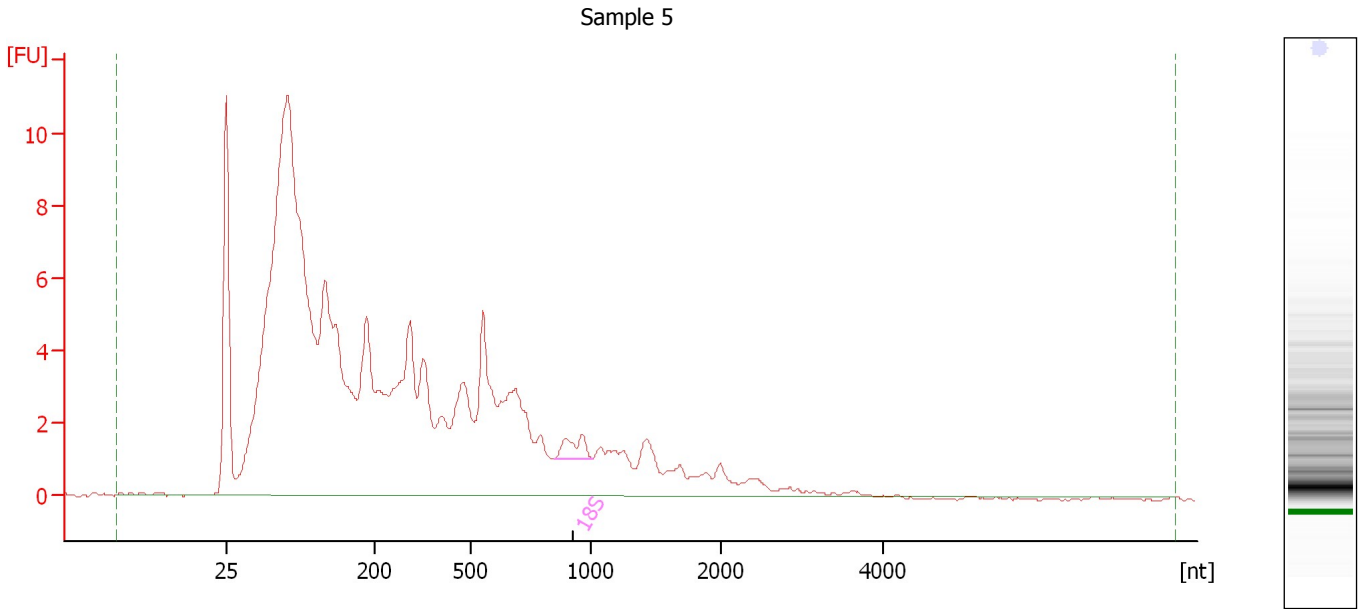
Fragment table for sample 4 : Sample 4

Name	Start Size [nt]	End Size [nt]	Area	% of total Area
18S	1,556	1,903	25.6	4.8
28S	3,495	3,904	11.2	2.1

Assay Class: Eukaryote Total RNA Nano
Data Path: C:\...ents and Settings\Bioanalyzer\2015-08-05\2015-08-05_001.xad

Created: 8/5/2015 2:28:56 PM
Modified: 8/5/2015 2:52:47 PM

Electropherogram Summary Continued ...



Overall Results for sample 5 : Sample 5

RNA Area:	196.1	RNA Integrity Number (RIN):	2.5 (B.02.08)
RNA Concentration:	239 ng/μl	Result Flagging Color:	
rRNA Ratio [28s / 18s]:	0.0	Result Flagging Label:	RIN: 2.50

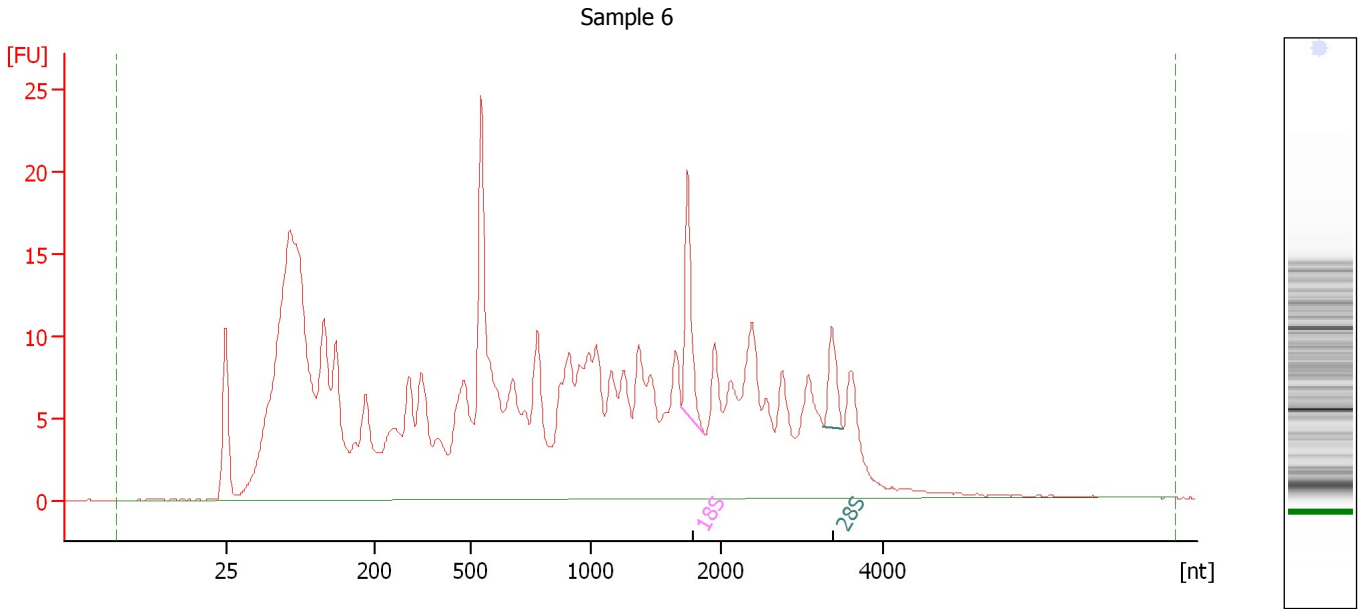
Fragment table for sample 5 : Sample 5

Name	Start Size [nt]	End Size [nt]	Area	% of total Area
18S	849	1,019	1.5	0.8

Assay Class: Eukaryote Total RNA Nano
Data Path: C:\...ents and Settings\Bioanalyzer\2015-08-05\2015-08-05_001.xad

Created: 8/5/2015 2:28:56 PM
Modified: 8/5/2015 2:52:47 PM

Electropherogram Summary Continued ...



Overall Results for sample 6 : Sample 6

RNA Area:	510.1	RNA Integrity Number (RIN):	3.2 (B.02.08)
RNA Concentration:	623 ng/μl	Result Flagging Color:	
rRNA Ratio [28s / 18s]:	0.4	Result Flagging Label:	RIN: 3.20

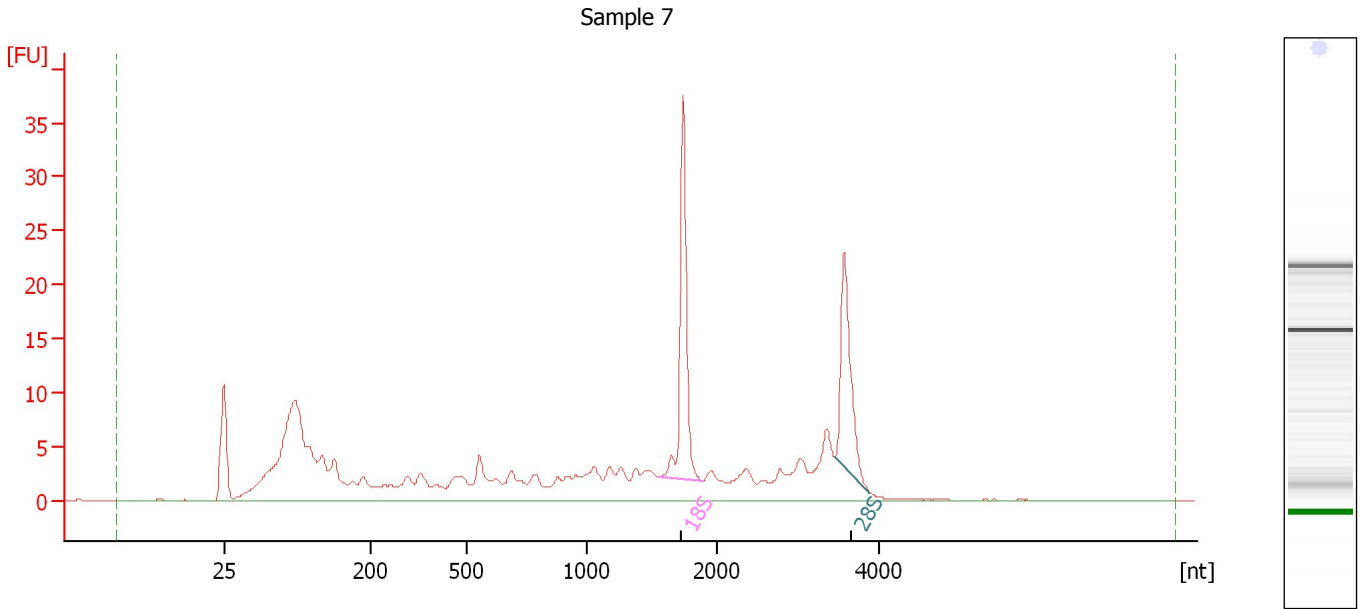
Fragment table for sample 6 : Sample 6

Name	Start Size [nt]	End Size [nt]	Area	% of total Area
18S	1,700	1,888	10.9	2.1
28S	3,265	3,501	4.8	0.9

Assay Class: Eukaryote Total RNA Nano
Data Path: C:\...ents and Settings\Bioanalyzer\2015-08-05\2015-08-05_001.xad

Created: 8/5/2015 2:28:56 PM
Modified: 8/5/2015 2:52:47 PM

Electropherogram Summary Continued ...



Overall Results for sample 7 : Sample 7

RNA Area:	244.7	RNA Integrity Number (RIN):	6.7 (B.02.08)
RNA Concentration:	299 ng/μl	Result Flagging Color:	
rRNA Ratio [28s / 18s]:	0.7	Result Flagging Label:	RIN: 6.70

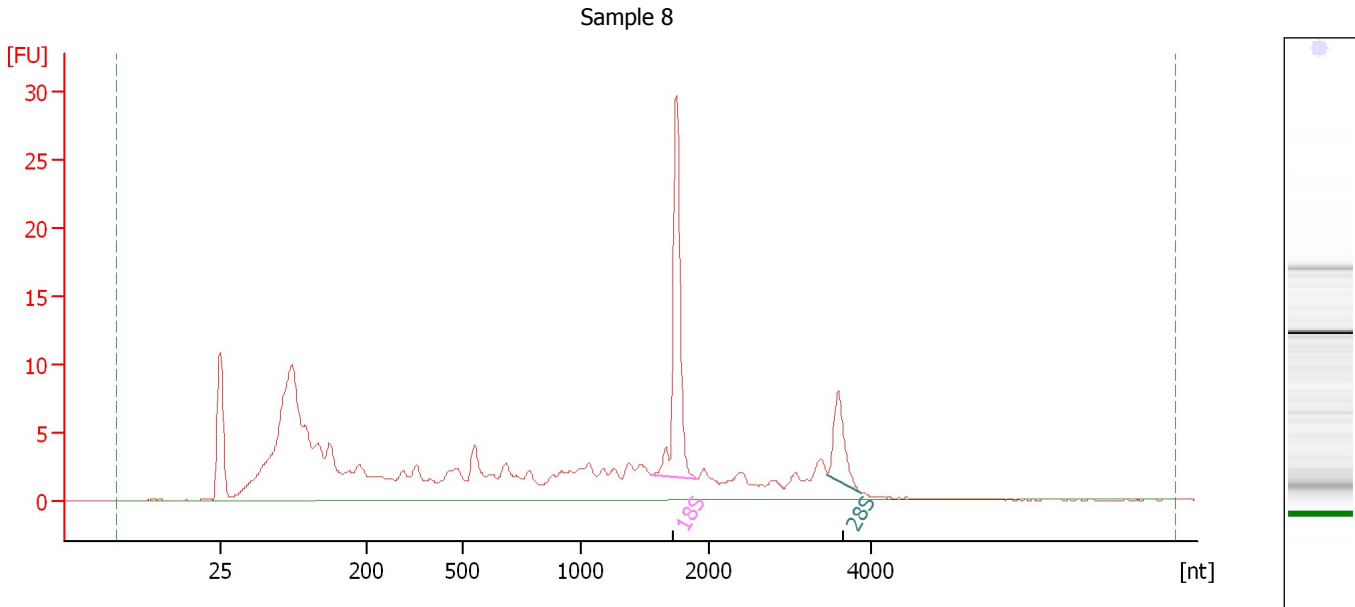
Fragment table for sample 7 : Sample 7

Name	Start Size [nt]	End Size [nt]	Area	% of total Area
18S	1,566	1,895	28.2	11.5
28S	3,466	3,888	19.7	8.0

Assay Class: Eukaryote Total RNA Nano
Data Path: C:\...ents and Settings\Bioanalyzer\2015-08-05\2015-08-05_001.xad

Created: 8/5/2015 2:28:56 PM
Modified: 8/5/2015 2:52:47 PM

Electropherogram Summary Continued ...



Overall Results for sample 8 : Sample 8

RNA Area:	206.4	RNA Integrity Number (RIN):	6.2 (B.02.08)
RNA Concentration:	252 ng/μl	Result Flagging Color:	
rRNA Ratio [28s / 18s]:	0.3	Result Flagging Label:	RIN: 6.20

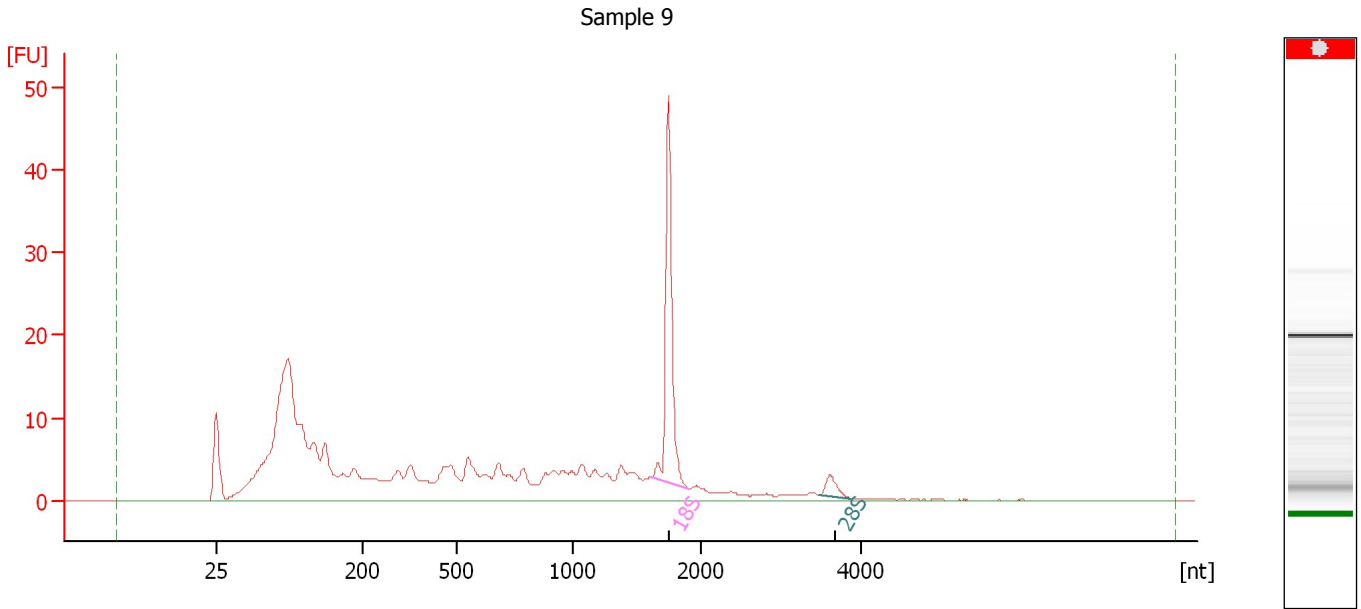
Fragment table for sample 8 : Sample 8

Name	Start Size [nt]	End Size [nt]	Area	% of total Area
18S	1,545	1,901	22.7	11.0
28S	3,459	3,870	6.8	3.3

Assay Class: Eukaryote Total RNA Nano
Data Path: C:\...ents and Settings\Bioanalyzer\2015-08-05\2015-08-05_001.xad

Created: 8/5/2015 2:28:56 PM
Modified: 8/5/2015 2:52:47 PM

Electropherogram Summary Continued ...



Overall Results for sample 9 : Sample 9

RNA Area:	305.6	RNA Integrity Number (RIN):	N/A (B.02.08)
RNA Concentration:	373 ng/μl	Result Flagging Color:	
rRNA Ratio [28s / 18s]:	0.1	Result Flagging Label:	RIN N/A

Fragment table for sample 9 : Sample 9

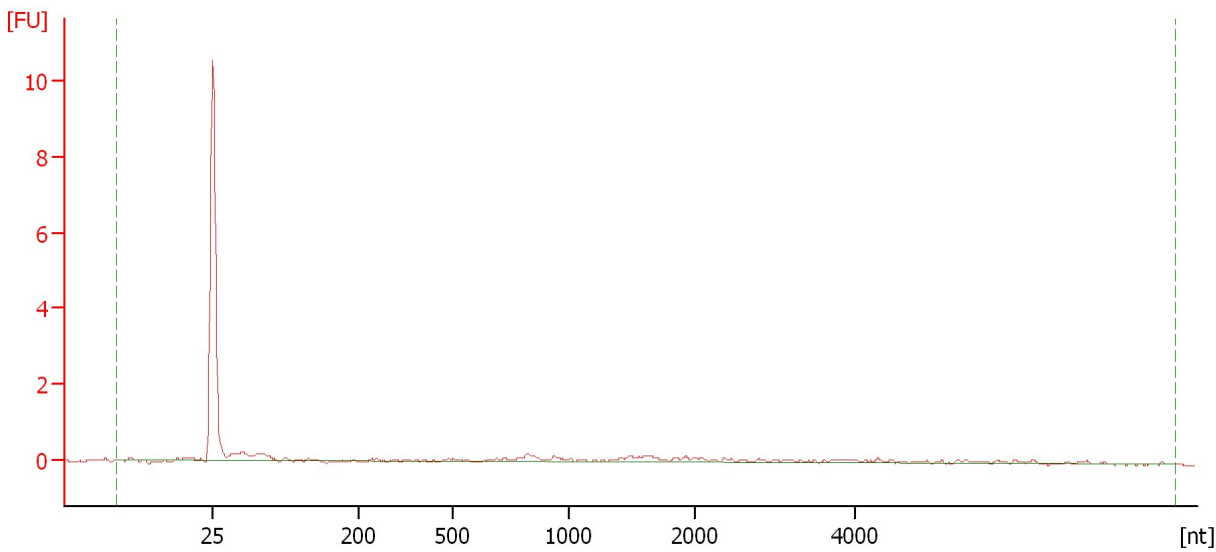
Name	Start Size [nt]	End Size [nt]	Area	% of total Area
18S	1,598	1,907	36.3	11.9
28S	3,468	3,869	2.8	0.9

Assay Class: Eukaryote Total RNA Nano
Data Path: C:\...ents and Settings\Bioanalyzer\2015-08-05\2015-08-05_001.xad

Created: 8/5/2015 2:28:56 PM
Modified: 8/5/2015 2:52:47 PM

Electropherogram Summary Continued ...

Sample 10



Overall Results for sample 10 : Sample 10

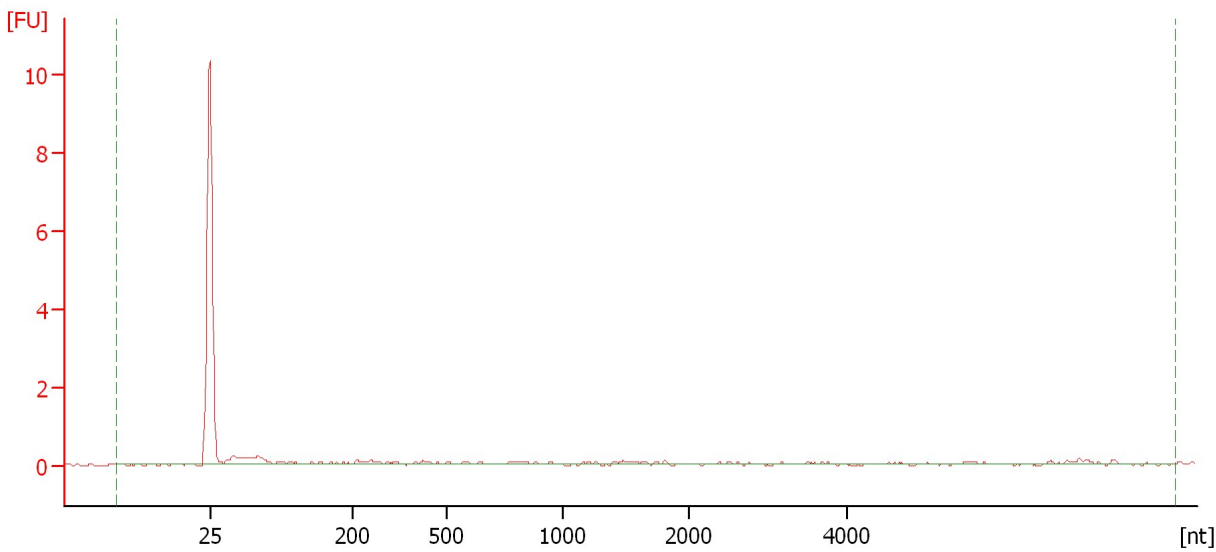
RNA Area:	5.5	RNA Integrity Number (RIN):	N/A (B.02.08)
RNA Concentration:	7 ng/μl	Result Flagging Color:	
rRNA Ratio [28s / 18s]:	0.0	Result Flagging Label:	RIN N/A

Assay Class: Eukaryote Total RNA Nano
Data Path: C:\...ents and Settings\Bioanalyzer\2015-08-05\2015-08-05_001.xad

Created: 8/5/2015 2:28:56 PM
Modified: 8/5/2015 2:52:47 PM

Electropherogram Summary Continued ...

Sample 11



Overall Results for sample 11 : Sample 11

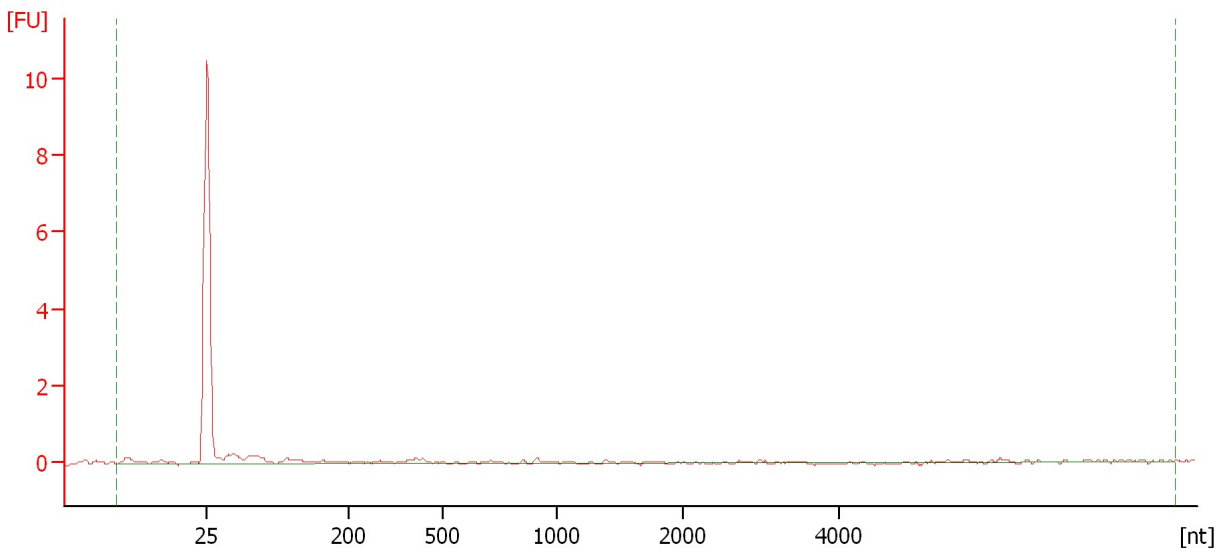
RNA Area:	3.4	RNA Integrity Number (RIN):	N/A (B.02.08)
RNA Concentration:	4 ng/μl	Result Flagging Color:	
rRNA Ratio [28s / 18s]:	0.0	Result Flagging Label:	RIN N/A

Assay Class: Eukaryote Total RNA Nano
Data Path: C:\...ents and Settings\Bioanalyzer\2015-08-05\2015-08-05_001.xad

Created: 8/5/2015 2:28:56 PM
Modified: 8/5/2015 2:52:47 PM

Electropherogram Summary Continued ...

Sample 12



Overall Results for sample 12 : Sample 12

RNA Area:	3.6	RNA Integrity Number (RIN):	N/A (B.02.08)
RNA Concentration:	4 ng/μl	Result Flagging Color:	
rRNA Ratio [28s / 18s]:	0.0	Result Flagging Label:	RIN N/A

Assay Class: Eukaryote Total RNA Nano
Data Path: C:\...ents and Settings\Bioanalyzer\2015-08-05\2015-08-05_001.xad

Created: 8/5/2015 2:28:56 PM
Modified: 8/5/2015 2:52:47 PM

Gel Image

