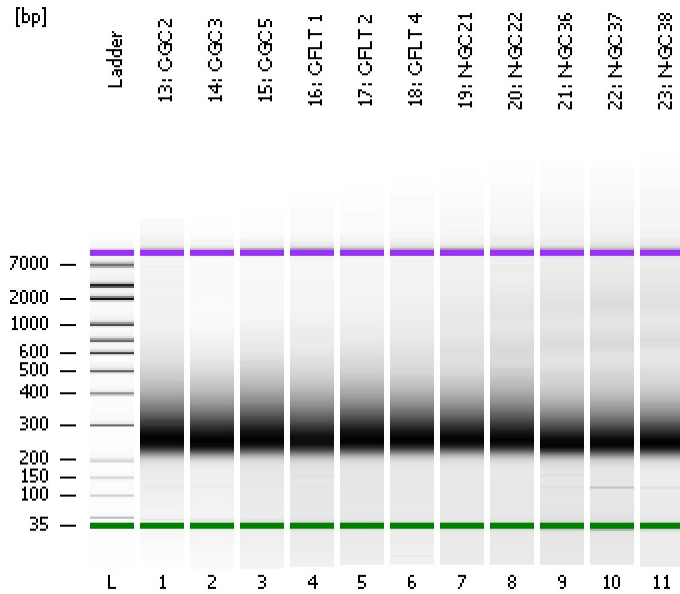


Assay Class: High Sensitivity DNA Assay
Data Path: C:\...ents and Settings\Bioanalyzer\2015-08-07\2015-08-07_002.xad

Created: 8/7/2015 12:59:11 PM
Modified: 8/7/2015 1:59:39 PM

Electrophoresis File Run Summary



Instrument Information:

Instrument Name: DE13701086 Firmware: C.01.069
Serial#: DE13701086 Type: G2938B

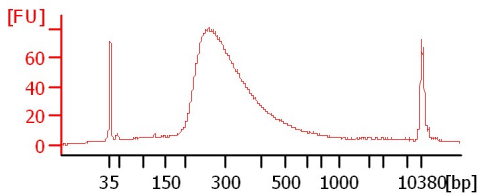
Assay Information:

Assay Origin Path: C:\Program Files\Agilent\2100 bioanalyzer\2100 expert\assays\dsDNA\High Sensitivity DNA.xsy
Assay Class: High Sensitivity DNA Assay
Version: 1.03
Assay Comments: Copyright © 2003-2010 Agilent Technologies

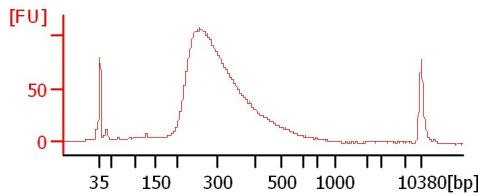
Chip Information:

Chip Lot #: Reagent Kit Lot #:
Chip Comments:

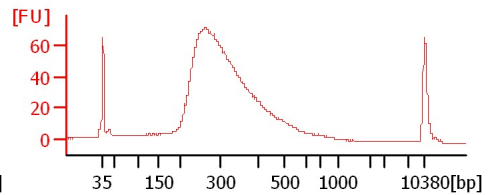
13: C-GC 2



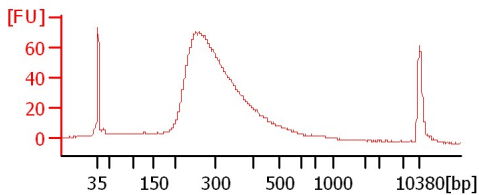
14: C-GC 3



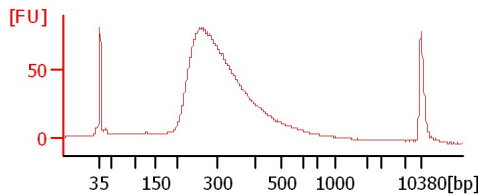
15: C-GC 5



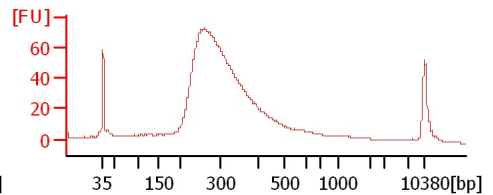
16: C-FLT 1



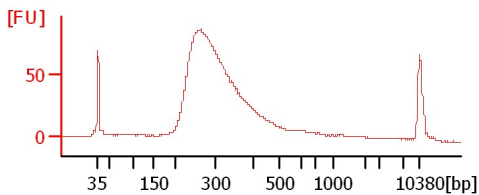
17: C-FLT 2



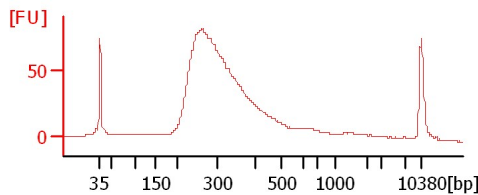
18: C-FLT 4



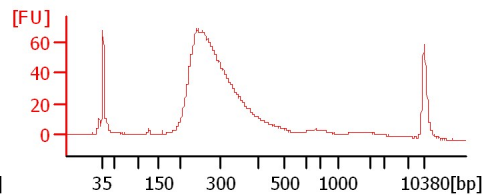
19: N-GC 21



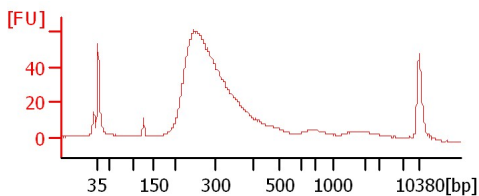
20: N-GC 22



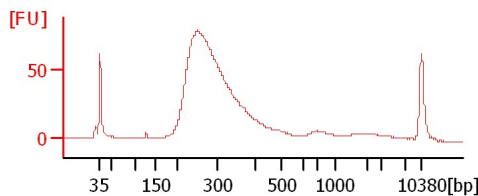
21: N-GC 36



22: N-GC 37



23: N-GC 38



Assay Class: High Sensitivity DNA Assay
 Data Path: C:\...ents and Settings\Bioanalyzer\2015-08-07\2015-08-07_002.xad

Created: 8/7/2015 12:59:11 PM
 Modified: 8/7/2015 1:59:39 PM

Electrophoresis File Run Summary (Chip Summary)

Sample Name	Sample Comment	Rest. Digest	Status	Observation	Result Label	Result Color
13: C-GC 2		<input type="checkbox"/>	✓			
14: C-GC 3		<input type="checkbox"/>	✓			
15: C-GC 5		<input type="checkbox"/>	✓			
16: C-FLT 1		<input type="checkbox"/>	✓			
17: C-FLT 2		<input type="checkbox"/>	✓			
18: C-FLT 4		<input type="checkbox"/>	✓			
19: N-GC 21		<input type="checkbox"/>	✓			
20: N-GC 22		<input type="checkbox"/>	✓			
21: N-GC 36		<input type="checkbox"/>	✓			
22: N-GC 37		<input type="checkbox"/>	✓			
23: N-GC 38		<input type="checkbox"/>	✓			
Ladder		<input type="checkbox"/>	✓			

Chip Lot #

Reagent Kit Lot #

Chip Comments :

Assay Class: High Sensitivity DNA Assay
Data Path: C:\...ents and Settings\Bioanalyzer\2015-08-07\2015-08-07_002.xad

Created: 8/7/2015 12:59:11 PM
Modified: 8/7/2015 1:59:39 PM

Electrophoresis Assay Details

General Analysis Settings

Number of Available Sample and Ladder Wells (Max.) : 12
Minimum Visible Range [s] : 32
Maximum Visible Range [s] : 138
Start Analysis Time Range [s] : 33
End Analysis Time Range [s] : 137.5
Ladder Concentration [pg/μl] : 1950
Uses Standard Area for Ladder Fragments
Lower Marker Concentration [pg/μl] : 125
Upper Marker Concentration [pg/μl] : 75
Used Upper Marker for Quantitation
Standard Curve Fit is Point to Point
Show Data Aligned to Lower and Upper Marker

Integrator Settings

Integration Start Time [s] : 33.05
Integration End Time [s] : 137
Slope Threshold : 0.8
Height Threshold [FU] : 5
Area Threshold : 0.1
Width Threshold [s] : 0.6
Baseline Plateau [s] : 0.5

Filter Settings

Filter Width [s] : 0.5
Polynomial Order : 4

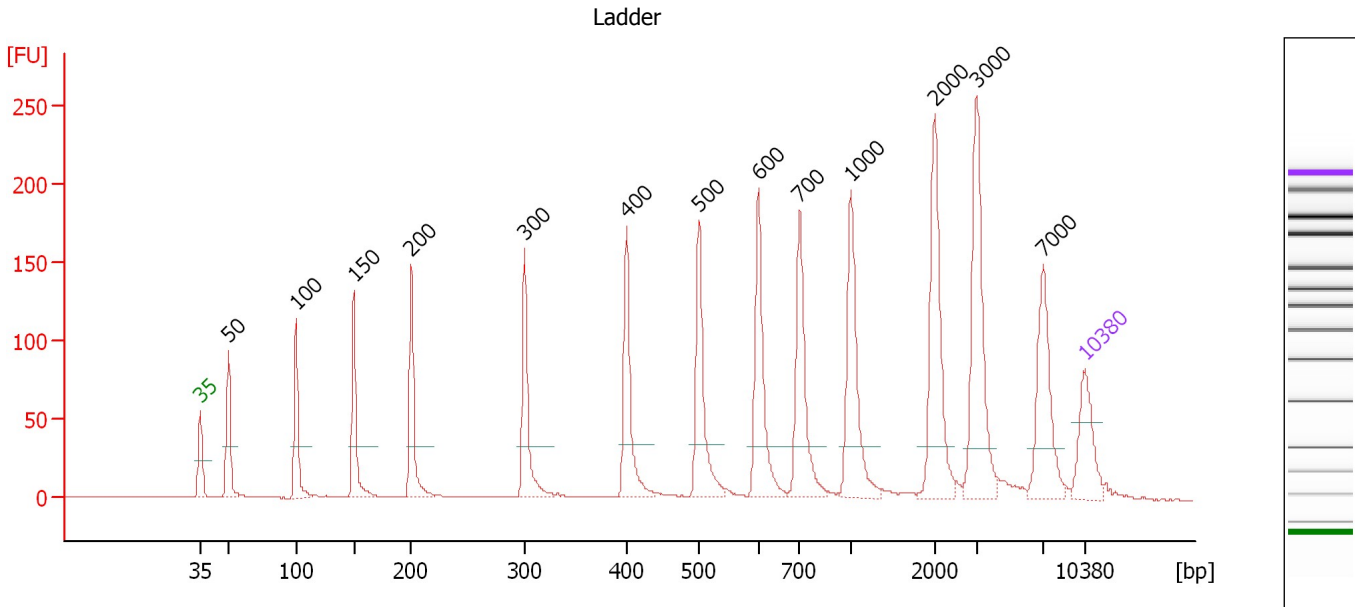
Ladder

Ladder Peak	Size	Area
1	35	160
2	50	210
3	100	208
4	150	221
5	200	242
6	300	270
7	400	305
8	500	306
9	600	336
10	700	321
11	1000	366
12	2000	413
13	3000	411
14	7000	400
15	10380	214

Assay Class: High Sensitivity DNA Assay
 Data Path: C:\...ents and Settings\Bioanalyzer\2015-08-07\2015-08-07_002.xad

Created: 8/7/2015 12:59:11 PM
 Modified: 8/7/2015 1:59:39 PM

Electropherogram Summary



Overall Results for Ladder

Noise: 0.2

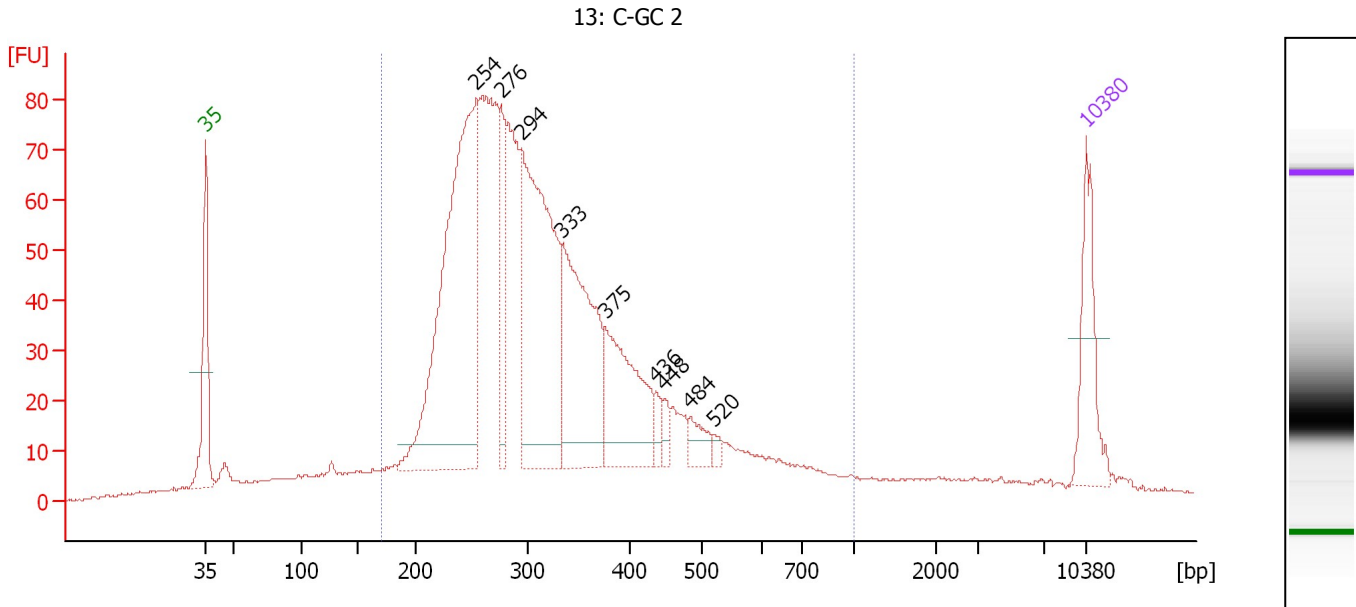
Peak table for Ladder

Peak	Size [bp]	Conc. [pg/μl]	Molarity [pmol/l]	Observations	Aligned Migration Time [s]
1	35	125.00	5,411.3	Lower Marker	43.00
2	50	150.00	4,545.5	Ladder Peak	45.24
3	100	150.00	2,272.7	Ladder Peak	50.59
4	150	150.00	1,515.2	Ladder Peak	55.15
5	200	150.00	1,136.4	Ladder Peak	59.71
6	300	150.00	757.6	Ladder Peak	68.65
7	400	150.00	568.2	Ladder Peak	76.71
8	500	150.00	454.5	Ladder Peak	82.45
9	600	150.00	378.8	Ladder Peak	87.18
10	700	150.00	324.7	Ladder Peak	90.43
11	1,000	150.00	227.3	Ladder Peak	94.48
12	2,000	150.00	113.6	Ladder Peak	101.10
13	3,000	150.00	75.8	Ladder Peak	104.39
14	7,000	150.00	32.5	Ladder Peak	109.71
15	10,380	75.00	10.9	Upper Marker	113.00

Assay Class: High Sensitivity DNA Assay
 Data Path: C:\...ents and Settings\Bioanalyzer\2015-08-07\2015-08-07_002.xad

Created: 8/7/2015 12:59:11 PM
 Modified: 8/7/2015 1:59:39 PM

Electropherogram Summary Continued ...



Overall Results for sample 1 : 13: C-GC 2

Number of peaks found: 9 Corr. Area 1: 1,718.8
 Noise: 0.2

Peak table for sample 1 : 13: C-GC 2

Peak	Size [bp]	Conc. [pg/μl]	Molarity [pmol/l]	Observations	Aligned Migration Time [s]
1	35	125.00	5,411.3	Lower Marker	43.00
2	254	645.82	3,854.8		64.53
3	276	105.25	577.6		66.52
4	294	444.41	2,293.1		68.08
5	333	283.77	1,289.5		71.35
6	375	174.00	702.1		74.74
7	436	18.79	65.3		78.76
8	448	15.82	53.5		79.48
9	484	28.10	88.0		81.52
10	520	8.26	24.1		83.38
11	10,380	75.00	10.9	Upper Marker	113.00

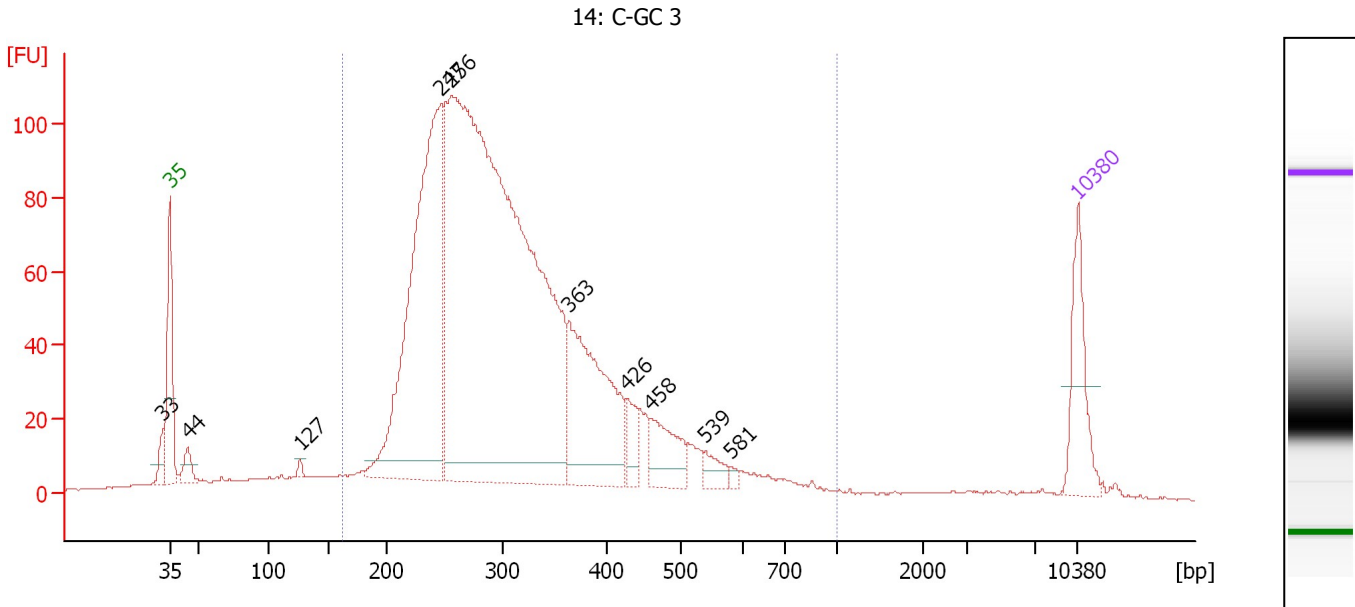
Region table for sample 1 : 13: C-GC 2

From [bp]	Average Size [bp]	To [bp]	Corr. Area	Molarity [pmol/l]	Co % of lor Total	Size distribution in CV [%]	Conc. [pg/μl]
169	330	1,000	1,718.8	14,296.1	89	34.4	2,777.13

Assay Class: High Sensitivity DNA Assay
 Data Path: C:\...ents and Settings\Bioanalyzer\2015-08-07\2015-08-07_002.xad

Created: 8/7/2015 12:59:11 PM
 Modified: 8/7/2015 1:59:39 PM

Electropherogram Summary Continued ...



Overall Results for sample 2 : 14: C-GC 3

Number of peaks found: 10 Corr. Area 1: 2,204.6
 Noise: 0.2

Peak table for sample 2 : 14: C-GC 3

Peak	Size [bp]	Conc. [pg/μl]	Molarity [pmol/l]	Observations	Aligned Migration Time [s]
1	33	0.00	0.0		42.44
2	35	125.00	5,411.3	Lower Marker	43.00
3	44	32.56	1,120.6		44.35
4	127	7.24	86.6		53.02
5	247	711.25	4,370.7		63.87
6	256	1,851.13	10,965.3		64.70
7	363	287.00	1,198.2		73.73
8	426	35.38	125.9		78.20
9	458	73.10	242.1		80.02
10	539	23.38	65.8		84.27
11	581	6.06	15.8		86.27
12	10,380	75.00	10.9	Upper Marker	113.00

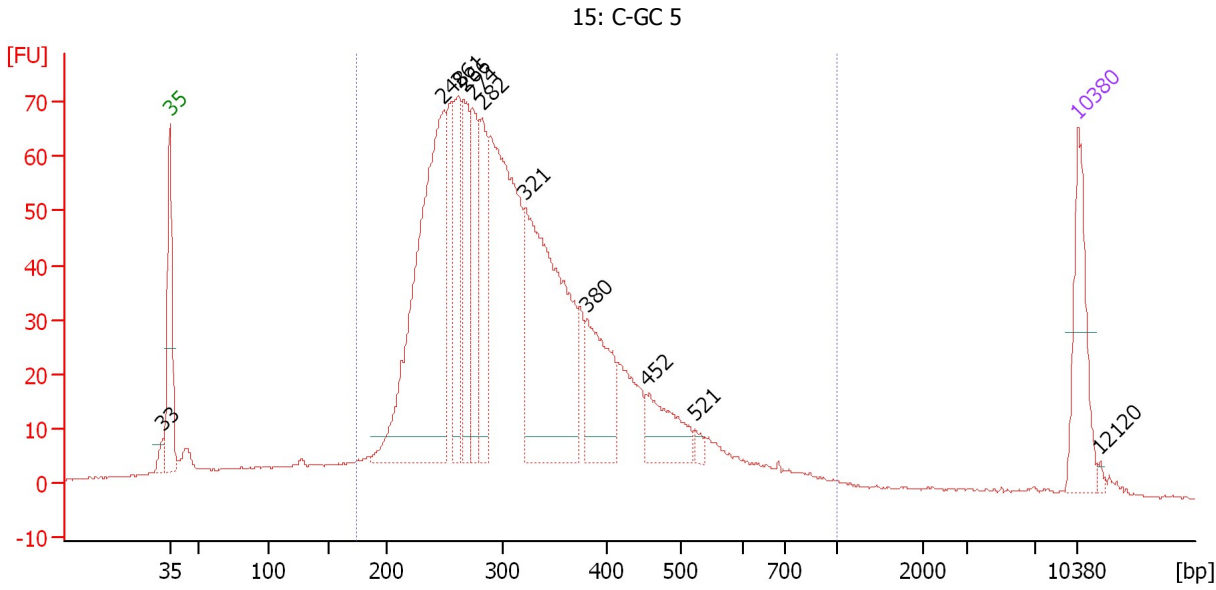
Region table for sample 2 : 14: C-GC 3

From [bp]	Average Size [bp]	To [bp]	Corr. Area	Molarity [pmol/l]	Co % of Ior Total	Size distribution in CV [%]	Conc. [pg/μl]
162	319	1,000	2,204.6	16,708.1	91	31.5	3,186.34

Assay Class: High Sensitivity DNA Assay
 Data Path: C:\...ents and Settings\Bioanalyzer\2015-08-07\2015-08-07_002.xad

Created: 8/7/2015 12:59:11 PM
 Modified: 8/7/2015 1:59:39 PM

Electropherogram Summary Continued ...



Overall Results for sample 3 : 15: C-GC 5

Number of peaks found: 11 Corr. Area 1: 1,538.5
 Noise: 0.2

Peak table for sample 3 : 15: C-GC 5

Peak	Size [bp]	Conc. [pg/μl]	Molarity [pmol/l]	Observations	Aligned Migration Time [s]
1	33	0.00	0.0		42.38
2	35	125.00	5,411.3	Lower Marker	43.00
3	248	513.42	3,130.8		64.04
4	261	149.08	864.0		65.20
5	266	128.47	730.6		65.65
6	274	106.32	588.2		66.32
7	282	116.20	624.6		67.03
8	321	395.29	1,866.9		70.33
9	380	122.29	487.6		75.10
10	452	71.54	239.8		79.69
11	521	9.22	26.8		83.44
12	10,380	75.00	10.9	Upper Marker	113.00
13	12,120	0.00	0.0		114.69

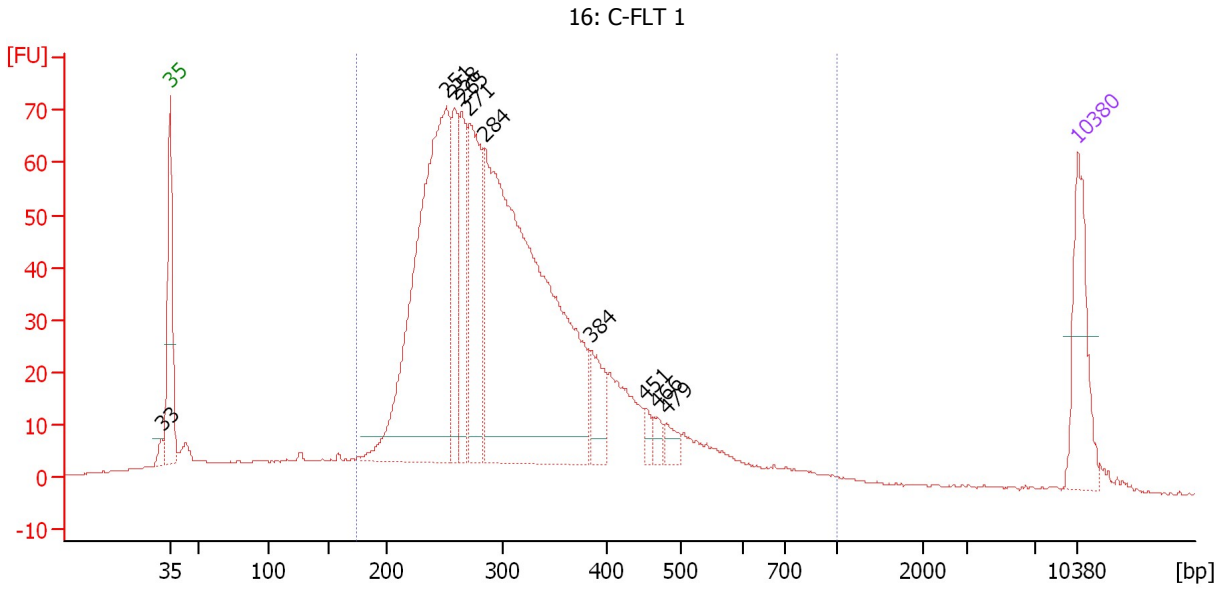
Region table for sample 3 : 15: C-GC 5

From [bp]	Average Size [bp]	To [bp]	Corr. Area	Molarity [pmol/l]	Co % of Ior Total	Size distribution in CV [%]	Conc. [pg/μl]
175	331	1,000	1,538.5	13,465.0	90	33.0	2,642.15

Assay Class: High Sensitivity DNA Assay
 Data Path: C:\...ents and Settings\Bioanalyzer\2015-08-07\2015-08-07_002.xad

Created: 8/7/2015 12:59:11 PM
 Modified: 8/7/2015 1:59:39 PM

Electropherogram Summary Continued ...



Overall Results for sample 4 : 16: C-FLT 1

Number of peaks found: 10 Corr. Area 1: 1,419.0
 Noise: 0.2

Peak table for sample 4 : 16: C-FLT 1

Peak	Size [bp]	Conc. [pg/μl]	Molarity [pmol/l]	Observations	Aligned Migration Time [s]
1	33	0.00	0.0		42.36
2	35	125.00	5,411.3	Lower Marker	43.00
3	251	585.89	3,532.4		64.30
4	258	109.44	642.7		64.90
5	265	114.25	654.1		65.49
6	271	182.61	1,019.8		66.09
7	284	814.15	4,341.3		67.24
8	384	53.01	209.3		75.41
9	451	11.16	37.5		79.63
10	466	11.80	38.4		80.50
11	479	15.46	48.9		81.24
12	10,380	75.00	10.9	Upper Marker	113.00

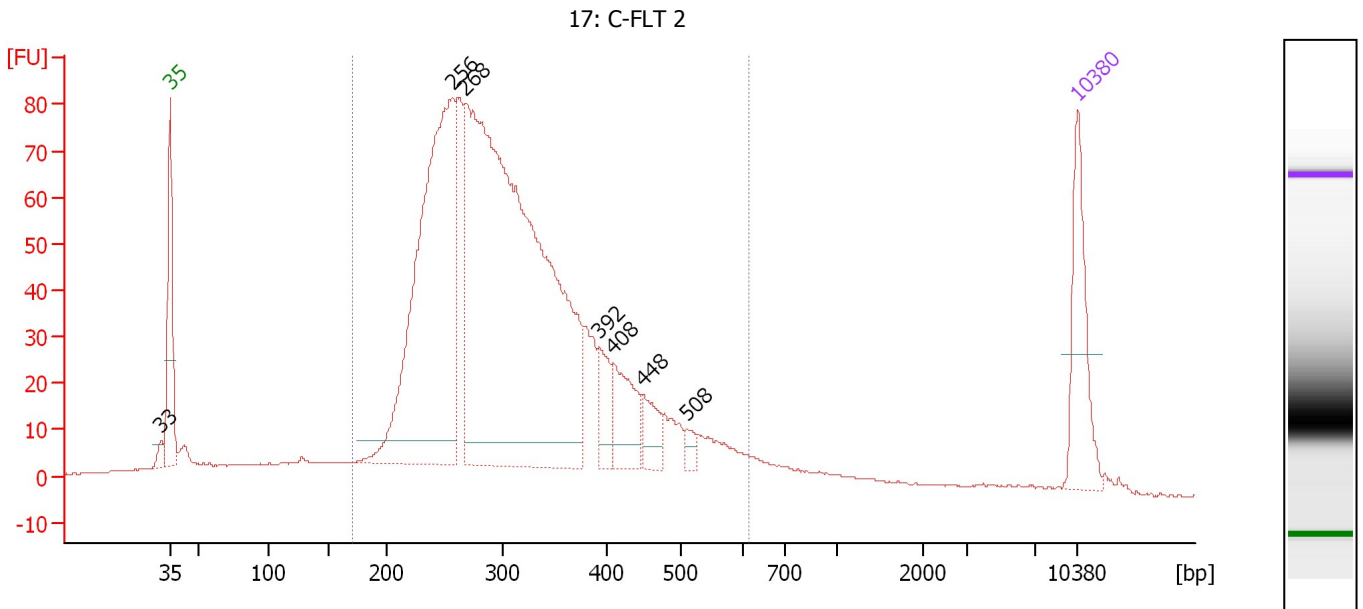
Region table for sample 4 : 16: C-FLT 1

From [bp]	Average Size [bp]	To [bp]	Corr. Area	Molarity [pmol/l]	Co % of Ior Total	Size distribution in CV [%]	Conc. [pg/μl]
175	325	1,000	1,419.0	11,869.4	90	33.4	2,288.29

Assay Class: High Sensitivity DNA Assay
 Data Path: C:\...ents and Settings\Bioanalyzer\2015-08-07\2015-08-07_002.xad

Created: 8/7/2015 12:59:11 PM
 Modified: 8/7/2015 1:59:39 PM

Electropherogram Summary Continued ...



Overall Results for sample 5 : 17: C-FLT 2

Number of peaks found: 7 Corr. Area 1: 1,687.5
 Noise: 0.1

Peak table for sample 5 : 17: C-FLT 2

Peak	Size [bp]	Conc. [pg/μl]	Molarity [pmol/l]	Observations	Aligned Migration Time [s]
1	33	0.00	0.0		42.30
2	35	125.00	5,411.3	Lower Marker	43.00
3	256	601.76	3,558.6		64.74
4	268	1,125.77	6,370.3		65.77
5	392	43.55	168.4		76.05
6	408	67.62	251.1		77.18
7	448	34.24	115.7		79.48
8	508	11.35	33.9		82.81
9	10,380	75.00	10.9	Upper Marker	113.00

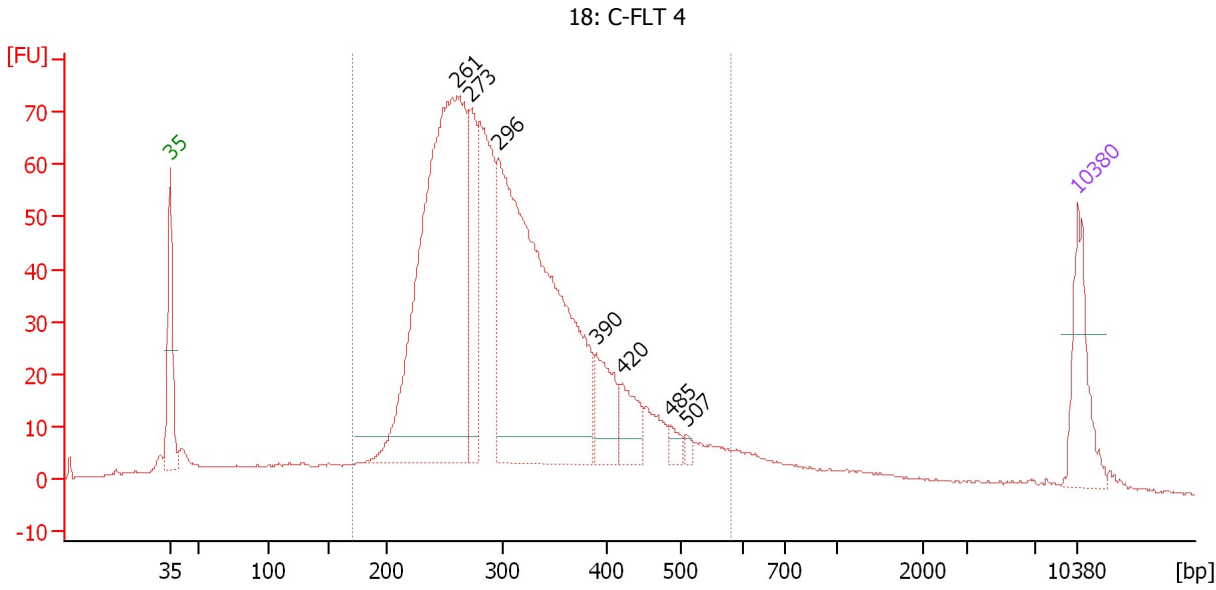
Region table for sample 5 : 17: C-FLT 2

From [bp]	Average Size [bp]	To [bp]	Corr. Area	Molarity [pmol/l]	Co % of Ior Total	Size distribution in CV [%]	Conc. [pg/μl]
171	319	614	1,687.5	11,783.8	87	26.5	2,280.41

Assay Class: High Sensitivity DNA Assay
 Data Path: C:\...ents and Settings\Bioanalyzer\2015-08-07\2015-08-07_002.xad

Created: 8/7/2015 12:59:11 PM
 Modified: 8/7/2015 1:59:39 PM

Electropherogram Summary Continued ...



Overall Results for sample 6 : 18: C-FLT 4

Number of peaks found: 7 Corr. Area 1: 1,414.1
 Noise: 0.2

Peak table for sample 6 : 18: C-FLT 4

Peak	Size [bp]	Conc. [pg/μl]	Molarity [pmol/l]	Observations	Aligned Migration Time [s]
1	35	125.00	5,411.3	Lower Marker	43.00
2	261	883.81	5,140.1		65.12
3	273	153.50	852.5		66.22
4	296	813.51	4,159.7		68.32
5	390	80.38	312.6		75.87
6	420	55.71	200.8		77.88
7	485	14.68	45.8		81.61
8	507	8.00	23.9		82.80
9	10,380	75.00	10.9	Upper Marker	113.00

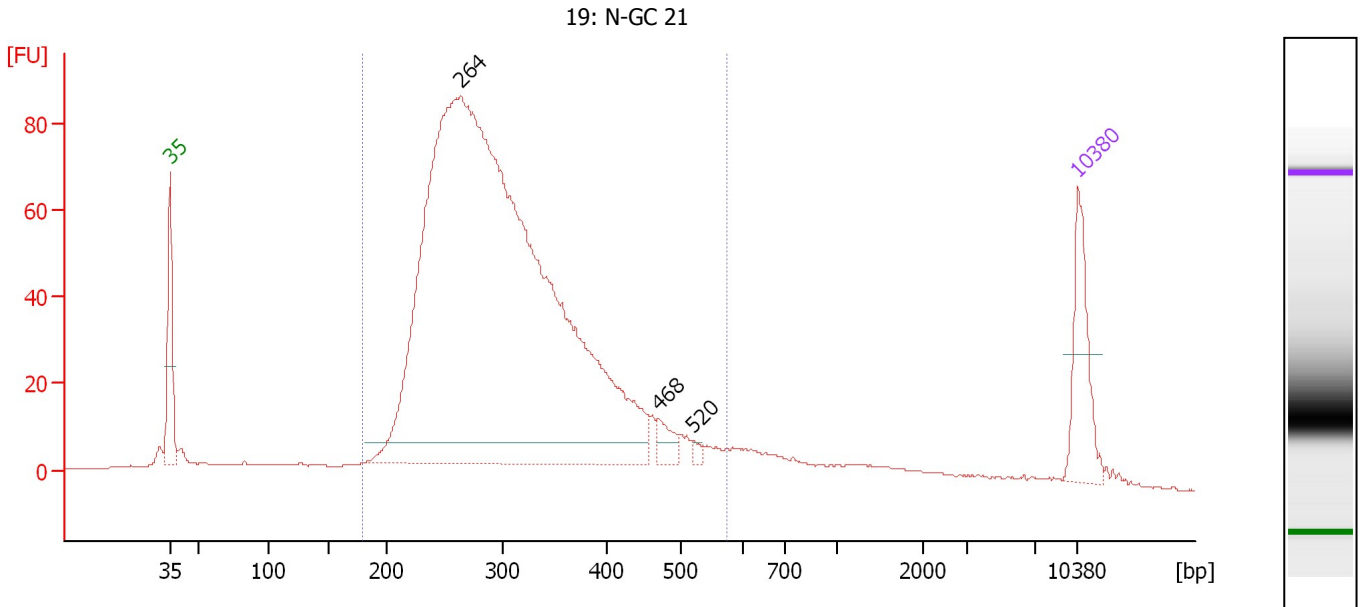
Region table for sample 6 : 18: C-FLT 4

From [bp]	Average Size [bp]	To [bp]	Corr. Area	Molarity [pmol/l]	Co % of Ior Total	Size distribution in CV [%]	Conc. [pg/μl]
171	314	580	1,414.1	13,758.3	85	24.9	2,644.41

Assay Class: High Sensitivity DNA Assay
 Data Path: C:\...ents and Settings\Bioanalyzer\2015-08-07\2015-08-07_002.xad

Created: 8/7/2015 12:59:11 PM
 Modified: 8/7/2015 1:59:39 PM

Electropherogram Summary Continued ...



Overall Results for sample 7 : 19: N-GC 21

Number of peaks found: 3 Corr. Area 1: 1,578.7
 Noise: 0.2

Peak table for sample 7 : 19: N-GC 21

Peak	Size [bp]	Conc. [pg/μl]	Molarity [pmol/l]	Observations	Aligned Migration Time [s]
1	35	125.00	5,411.3	Lower Marker	43.00
2	264	2,316.53	13,293.1		65.44
3	468	25.80	83.4		80.64
4	520	6.57	19.2		83.38
5	10,380	75.00	10.9	Upper Marker	113.00

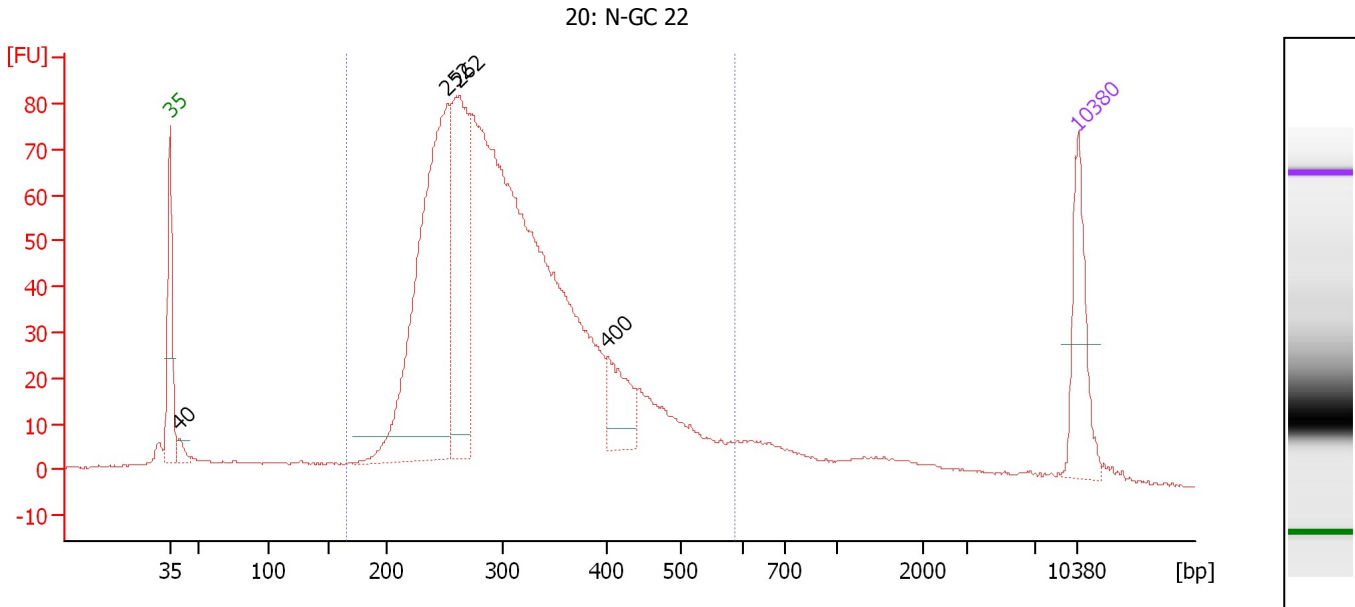
Region table for sample 7 : 19: N-GC 21

From [bp]	Average Size [bp]	To [bp]	Corr. Area	Molarity [pmol/l]	Co % of lor Total	Size distribution in CV [%]	Conc. [pg/μl]
180	312	574	1,578.7	12,747.7	86	24.0	2,453.40

Assay Class: High Sensitivity DNA Assay
 Data Path: C:\...ents and Settings\Bioanalyzer\2015-08-07\2015-08-07_002.xad

Created: 8/7/2015 12:59:11 PM
 Modified: 8/7/2015 1:59:39 PM

Electropherogram Summary Continued ...



Overall Results for sample 8 : 20: N-GC 22

Number of peaks found: 4 Corr. Area 1: 1,585.8
 Noise: 0.2

Peak table for sample 8 : 20: N-GC 22

Peak	Size [bp]	Conc. [pg/μl]	Molarity [pmol/l]	Observations	Aligned Migration Time [s]
1	35	125.00	5,411.3	Lower Marker	43.00
2	40	16.15	617.3		43.69
3	252	548.73	3,299.9		64.36
4	262	290.25	1,675.6		65.30
5	400	68.45	259.3		76.71
6	10,380	75.00	10.9	Upper Marker	113.00

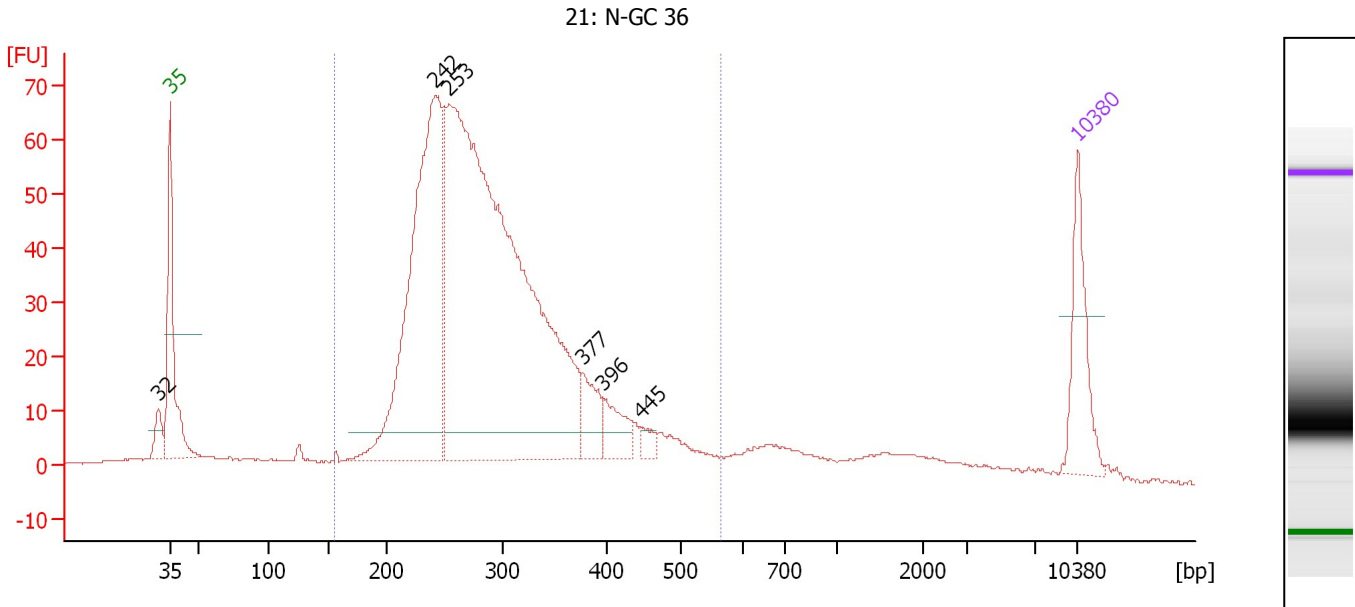
Region table for sample 8 : 20: N-GC 22

From [bp]	Average Size [bp]	To [bp]	Corr. Area	Molarity [pmol/l]	Co % of lor Total	Size distribution in CV [%]	Conc. [pg/μl]
166	316	587	1,585.8	12,212.6	85	25.4	2,361.92

Assay Class: High Sensitivity DNA Assay
 Data Path: C:\...ents and Settings\Bioanalyzer\2015-08-07\2015-08-07_002.xad

Created: 8/7/2015 12:59:11 PM
 Modified: 8/7/2015 1:59:39 PM

Electropherogram Summary Continued ...



Overall Results for sample 9 : 21: N-GC 36

Number of peaks found: 6 Corr. Area 1: 1,178.7
 Noise: 0.2

Peak table for sample 9 : 21: N-GC 36

Peak	Size [bp]	Conc. [pg/μl]	Molarity [pmol/l]	Observations	Aligned Migration Time [s]
1	32	0.00	0.0		42.10
2	35	125.00	5,411.3	Lower Marker	43.00
3	242	597.05	3,744.8		63.43
4	253	1,330.24	7,958.2		64.47
5	377	49.89	200.7		74.84
6	396	43.52	166.3		76.43
7	445	13.21	44.9		79.32
8	10,380	75.00	10.9	Upper Marker	113.00

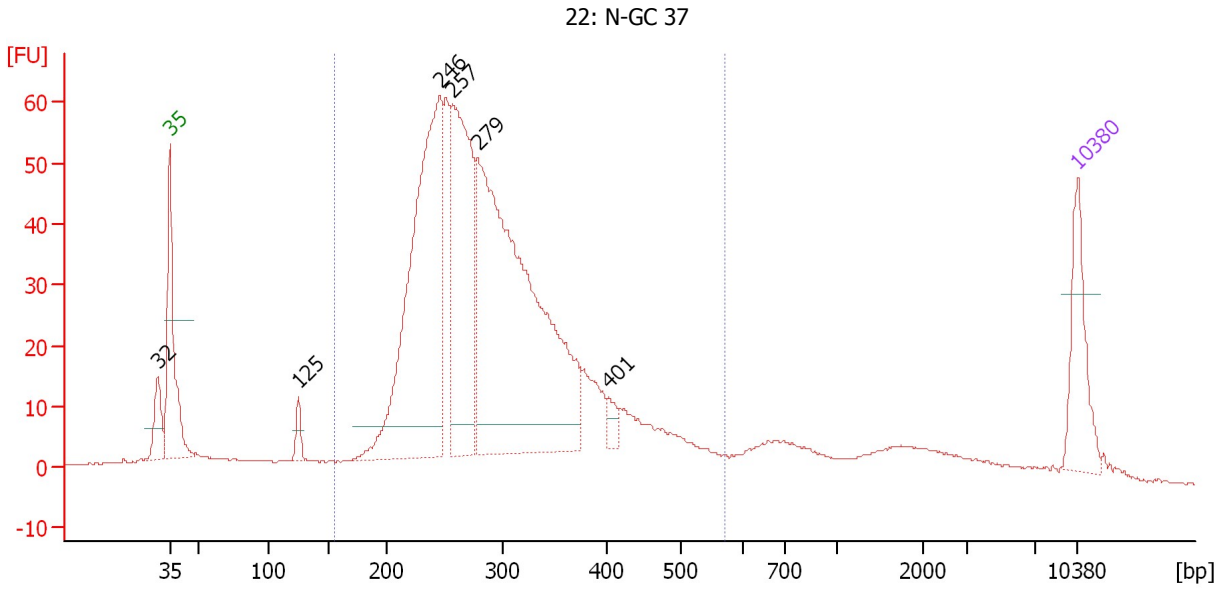
Region table for sample 9 : 21: N-GC 36

From [bp]	Average Size [bp]	To [bp]	Corr. Area	Molarity [pmol/l]	Co % of Ior Total	Size distribution in CV [%]	Conc. [pg/μl]
155	298	564	1,178.7	12,101.0	83	24.3	2,224.99

Assay Class: High Sensitivity DNA Assay
 Data Path: C:\...ents and Settings\Bioanalyzer\2015-08-07\2015-08-07_002.xad

Created: 8/7/2015 12:59:11 PM
 Modified: 8/7/2015 1:59:39 PM

Electropherogram Summary Continued ...



Overall Results for sample 10 : 22: N-GC 37

Number of peaks found: 6 Corr. Area 1: 1,066.7
 Noise: 0.2

Peak table for sample 10 : 22: N-GC 37

Peak	Size [bp]	Conc. [pg/μl]	Molarity [pmol/l]	Observations	Aligned Migration Time [s]
1	32	0.00	0.0		42.05
2	35	125.00	5,411.3	Lower Marker	43.00
3	125	22.52	272.5		52.89
4	246	604.68	3,730.1		63.79
5	257	360.90	2,124.4		64.84
6	279	809.31	4,399.3		66.75
7	401	17.57	66.3		76.79
8	10,380	75.00	10.9	Upper Marker	113.00

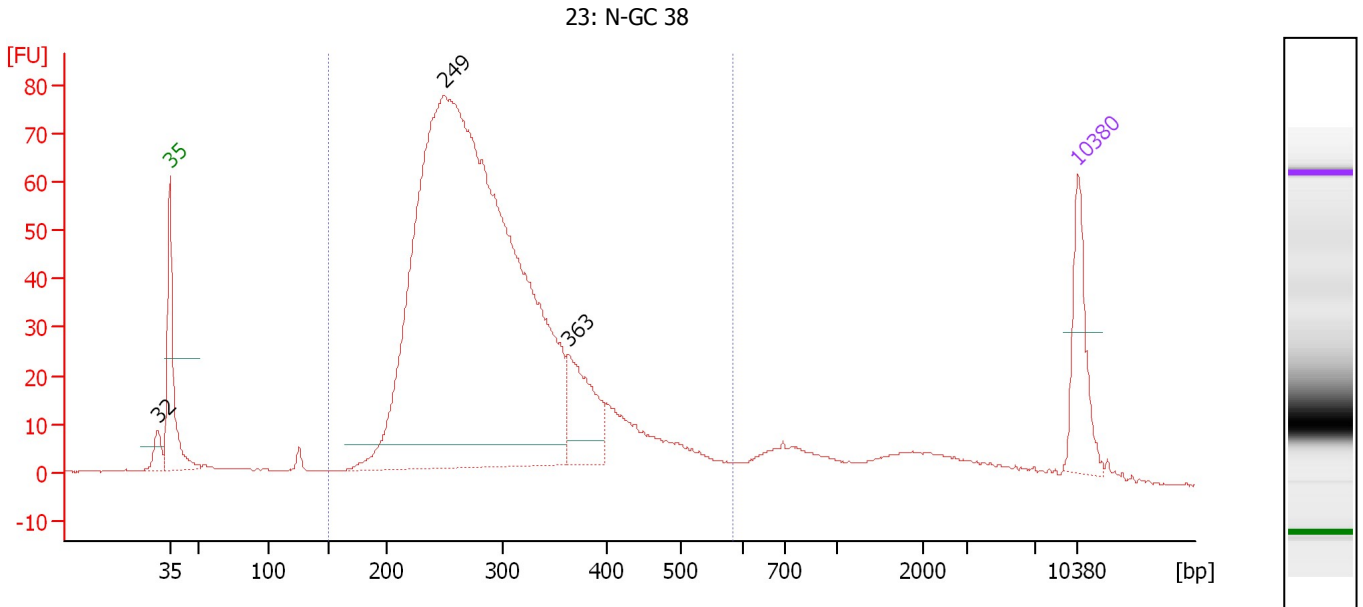
Region table for sample 10 : 22: N-GC 37

From [bp]	Average Size [bp]	To [bp]	Corr. Area	Molarity [pmol/l]	Co % of Ior Total	Size distribution in CV [%]	Conc. [pg/μl]
156	301	570	1,066.7	12,804.9	80	25.0	2,364.71

Assay Class: High Sensitivity DNA Assay
 Data Path: C:\...ents and Settings\Bioanalyzer\2015-08-07\2015-08-07_002.xad

Created: 8/7/2015 12:59:11 PM
 Modified: 8/7/2015 1:59:39 PM

Electropherogram Summary Continued ...



Overall Results for sample 11 : 23: N-GC 38

Number of peaks found: 3 Corr. Area 1: 1,327.8
 Noise: 0.2

Peak table for sample 11 : 23: N-GC 38

Peak	Size [bp]	Conc. [pg/μl]	Molarity [pmol/l]	Observations	Aligned Migration Time [s]
1	32	0.00	0.0		42.03
2	35	125.00	5,411.3	Lower Marker	43.00
3	249	2,134.90	12,967.4		64.13
4	363	124.81	520.9		73.73
5	10,380	75.00	10.9	Upper Marker	113.00

Region table for sample 11 : 23: N-GC 38

From [bp]	Average Size [bp]	To [bp]	Corr. Area	Molarity [pmol/l]	Co % of lor Total	Size distribution in CV [%]	Conc. [pg/μl]
151	300	585	1,327.8	13,481.2	84	24.9	2,491.14

Assay Class: High Sensitivity DNA Assay
Data Path: C:\...ents and Settings\Bioanalyzer\2015-08-07\2015-08-07_002.xad

Created: 8/7/2015 12:59:11 PM
Modified: 8/7/2015 1:59:39 PM

Gel Image

