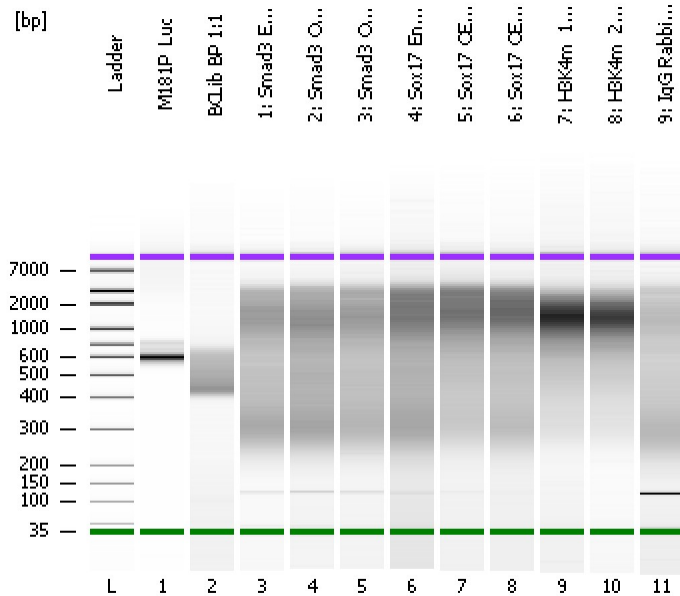


Assay Class: High Sensitivity DNA Assay
Data Path: C:\...ents and Settings\Bioanalyzer\2015-08-12\2015-08-12_001.xad

Created: 8/12/2015 3:29:34 PM
Modified: 8/12/2015 4:39:20 PM

Electrophoresis File Run Summary



Instrument Information:

Instrument Name: DE13701086 Firmware: C.01.069
Serial#: DE13701086 Type: G2938B

Assay Information:

Assay Origin Path: C:\Program Files\Agilent\2100 bioanalyzer\2100 expert\assays\dsDNA\High Sensitivity DNA.xsy
Assay Class: High Sensitivity DNA Assay
Version: 1.03
Assay Comments: Copyright © 2003-2010 Agilent Technologies

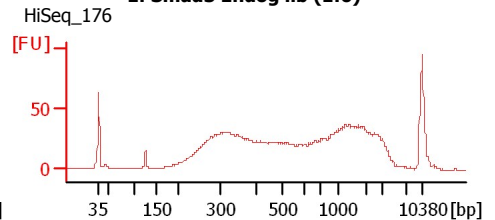
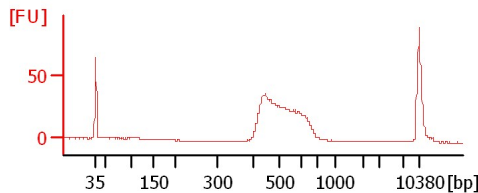
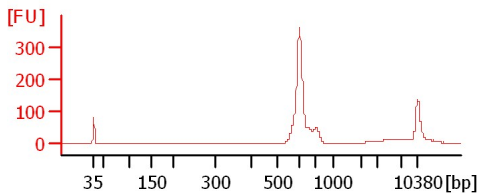
Chip Information:

Chip Lot #:
Reagent Kit Lot #:
Chip Comments:

M181P_Luc

BCLib BP 1:1

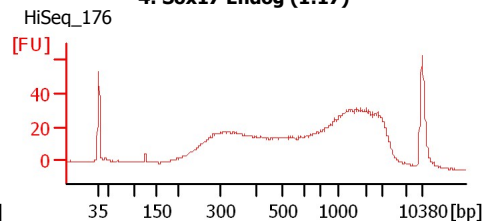
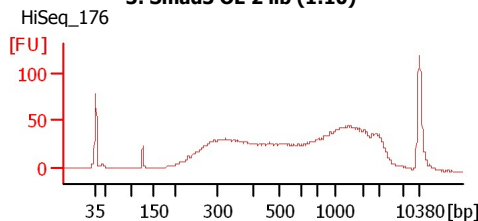
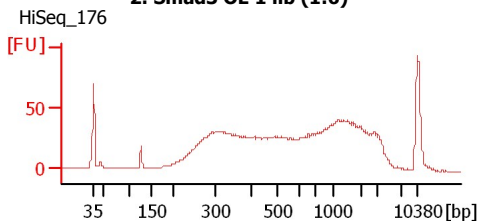
1: Smad3 Endog lib (1:6)



2: Smad3 OE 1 lib (1:6)

3: Smad3 OE 2 lib (1:10)

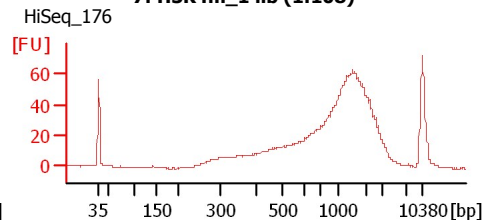
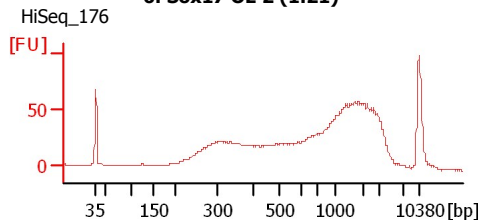
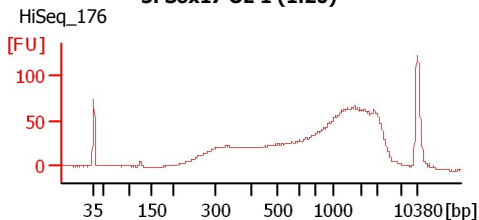
4: Sox17 Endog (1:17)



5: Sox17 OE 1 (1:20)

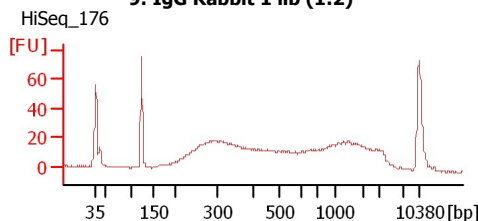
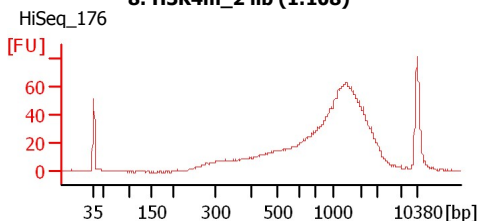
6: Sox17 OE 2 (1:21)

7: H3K4m_1 lib (1:108)



8: H3K4m_2 lib (1:108)

9: IgG Rabbit 1 lib (1:2)



Assay Class: High Sensitivity DNA Assay
Data Path: C:\...ents and Settings\Bioanalyzer\2015-08-12\2015-08-12_001.xad

Created: 8/12/2015 3:29:34 PM
Modified: 8/12/2015 4:39:20 PM

Electrophoresis File Run Summary (Chip Summary)

Sample Name	Sample Comment	Rest. Digest	Status	Observation	Result Label	Result Color
M181P_Luc		<input type="checkbox"/>	✓			
BCLib BP 1:1		<input type="checkbox"/>	✓			
1: Smad3 Endog lib (1:6)	HiSeq_176	<input type="checkbox"/>	✓			
2: Smad3 OE 1 lib (1:6)	HiSeq_176	<input type="checkbox"/>	✓			
3: Smad3 OE 2 lib (1:10)	HiSeq_176	<input type="checkbox"/>	✓			
4: Sox17 Endog (1:17)	HiSeq_176	<input type="checkbox"/>	✓			
5: Sox17 OE 1 (1:20)	HiSeq_176	<input type="checkbox"/>	✓			
6: Sox17 OE 2 (1:21)	HiSeq_176	<input type="checkbox"/>	✓			
7: H3K4m_1 lib (1:108)	HiSeq_176	<input type="checkbox"/>	✓			
8: H3K4m_2 lib (1:108)	HiSeq_176	<input type="checkbox"/>	✓			
9: IgG Rabbit 1 lib (1:2)	HiSeq_176	<input type="checkbox"/>	✓			
Ladder		<input type="checkbox"/>	✓			

Chip Lot #

Reagent Kit Lot #

Chip Comments :

Assay Class: High Sensitivity DNA Assay
Data Path: C:\...ents and Settings\Bioanalyzer\2015-08-12\2015-08-12_001.xad

Created: 8/12/2015 3:29:34 PM
Modified: 8/12/2015 4:39:20 PM

Electrophoresis Assay Details

General Analysis Settings

Number of Available Sample and Ladder Wells (Max.) : 12
Minimum Visible Range [s] : 32
Maximum Visible Range [s] : 138
Start Analysis Time Range [s] : 33
End Analysis Time Range [s] : 137.5
Ladder Concentration [pg/μl] : 1950
Uses Standard Area for Ladder Fragments
Lower Marker Concentration [pg/μl] : 125
Upper Marker Concentration [pg/μl] : 75
Used Upper Marker for Quantitation
Standard Curve Fit is Point to Point
Show Data Aligned to Lower and Upper Marker

Integrator Settings

Integration Start Time [s] : 33.05
Integration End Time [s] : 137
Slope Threshold : 0.8
Height Threshold [FU] : 5
Area Threshold : 0.1
Width Threshold [s] : 0.6
Baseline Plateau [s] : 0.5

Filter Settings

Filter Width [s] : 0.5
Polynomial Order : 4

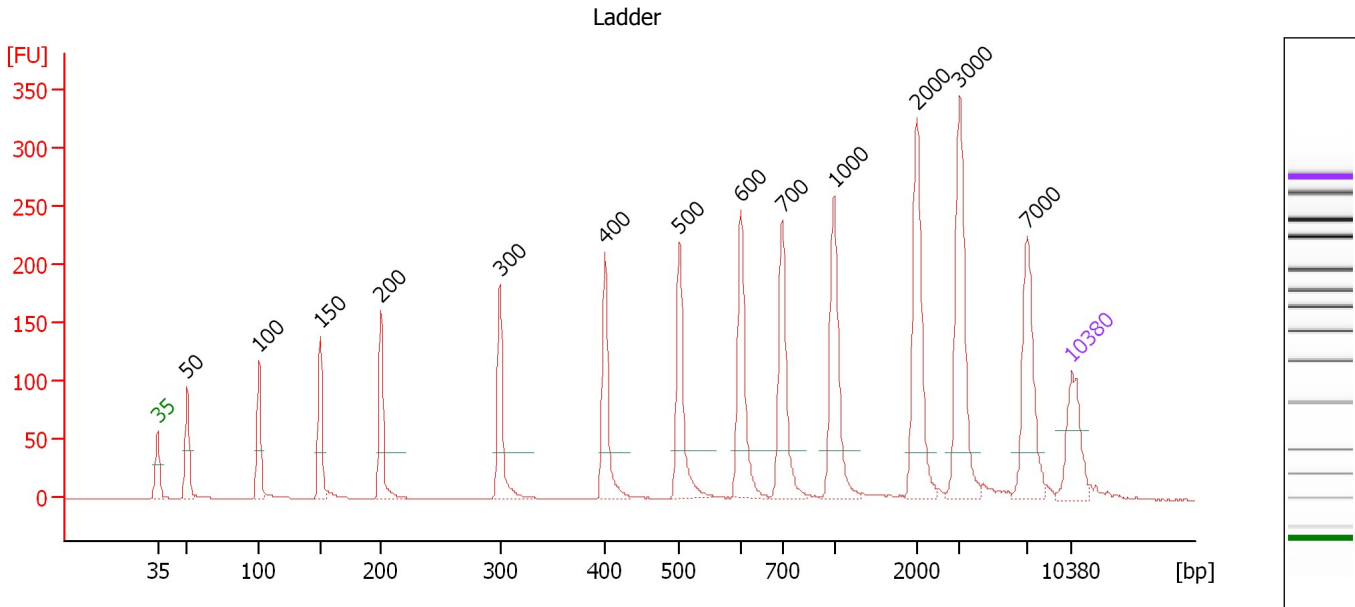
Ladder

Ladder Peak	Size	Area
1	35	160
2	50	210
3	100	208
4	150	221
5	200	242
6	300	270
7	400	305
8	500	306
9	600	336
10	700	321
11	1000	366
12	2000	413
13	3000	411
14	7000	400
15	10380	214

Assay Class: High Sensitivity DNA Assay
 Data Path: C:\...ents and Settings\Bioanalyzer\2015-08-12\2015-08-12_001.xad

Created: 8/12/2015 3:29:34 PM
 Modified: 8/12/2015 4:39:20 PM

Electropherogram Summary



Overall Results for Ladder

Noise: 0.1

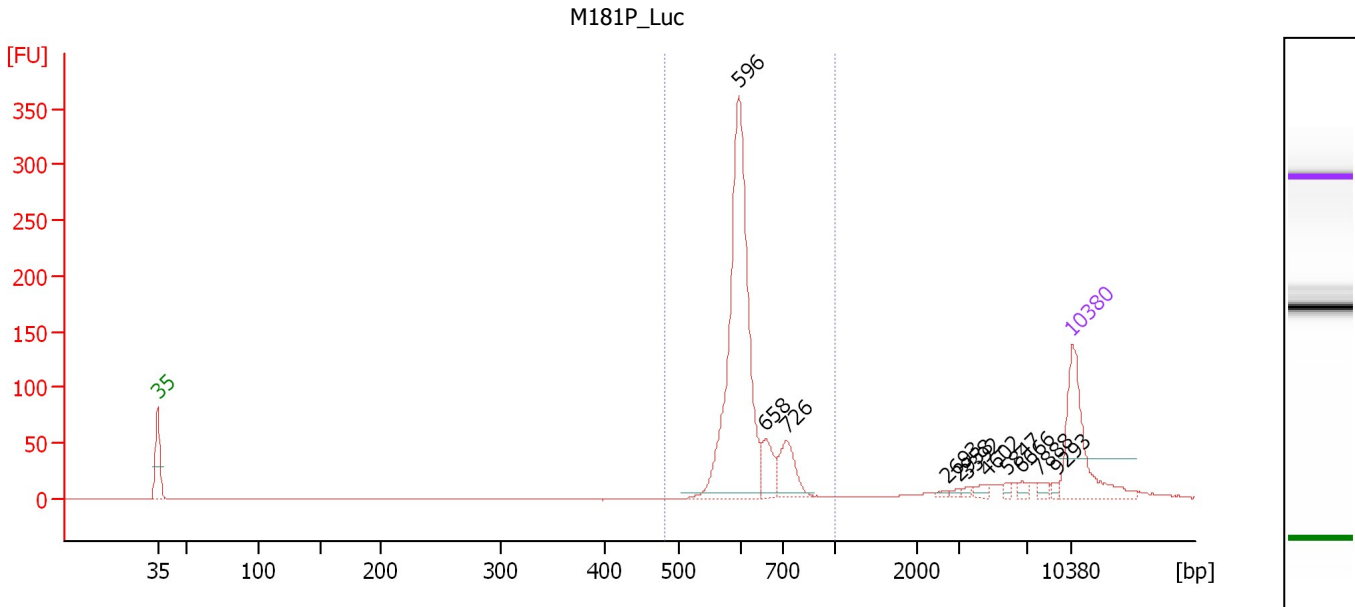
Peak table for Ladder

Peak	Size [bp]	Conc. [pg/μl]	Molarity [pmol/l]	Observations	Aligned Migration Time [s]
1	35	125.00	5,411.3	Lower Marker	43.00
2	50	150.00	4,545.5	Ladder Peak	45.28
3	100	150.00	2,272.7	Ladder Peak	50.76
4	150	150.00	1,515.2	Ladder Peak	55.47
5	200	150.00	1,136.4	Ladder Peak	60.12
6	300	150.00	757.6	Ladder Peak	69.21
7	400	150.00	568.2	Ladder Peak	77.25
8	500	150.00	454.5	Ladder Peak	82.95
9	600	150.00	378.8	Ladder Peak	87.66
10	700	150.00	324.7	Ladder Peak	90.81
11	1,000	150.00	227.3	Ladder Peak	94.78
12	2,000	150.00	113.6	Ladder Peak	101.13
13	3,000	150.00	75.8	Ladder Peak	104.42
14	7,000	150.00	32.5	Ladder Peak	109.58
15	10,380	75.00	10.9	Upper Marker	113.00

Assay Class: High Sensitivity DNA Assay
 Data Path: C:\...ents and Settings\Bioanalyzer\2015-08-12\2015-08-12_001.xad

Created: 8/12/2015 3:29:34 PM
 Modified: 8/12/2015 4:39:20 PM

Electropherogram Summary Continued ...



Overall Results for sample 1 : M181P_Luc

Number of peaks found: 11 Corr. Area 1: 891.8
 Noise: 0.2

Peak table for sample 1 : M181P_Luc

Peak	Size [bp]	Conc. [pg/μl]	Molarity [pmol/l]	Observations	Aligned Migration Time [s]
1	35	125.00	5,411.3	Lower Marker	43.00
2	596	342.04	869.2		87.48
3	658	30.08	69.2		89.50
4	726	42.30	88.3		91.15
5	2,693	2.30	1.3		103.41
6	2,958	2.43	1.2		104.28
7	3,392	2.60	1.2		104.92
8	4,602	5.39	1.8		106.48
9	5,847	3.01	0.8		108.09
10	6,666	4.65	1.1		109.14
11	7,888	4.51	0.9		110.48
12	9,293	3.24	0.5		111.90
13	10,380	75.00	10.9	Upper Marker	113.00

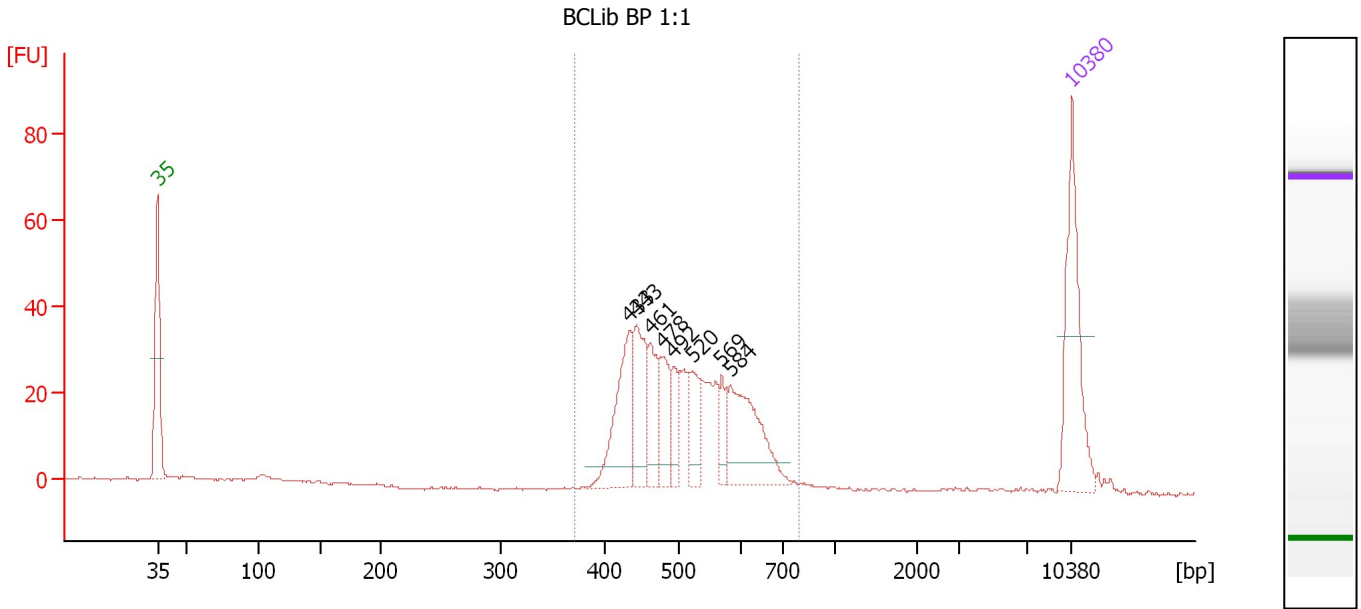
Region table for sample 1 : M181P_Luc

From [bp]	Average Size [bp]	To [bp]	Corr. Area	Molarity [pmol/l]	Co % of lor Total	Size distribution in CV [%]	Conc. [pg/μl]
481	619	1,000	891.8	1,058.6	83	9.4	429.57

Assay Class: High Sensitivity DNA Assay
 Data Path: C:\...ents and Settings\Bioanalyzer\2015-08-12\2015-08-12_001.xad

Created: 8/12/2015 3:29:34 PM
 Modified: 8/12/2015 4:39:20 PM

Electropherogram Summary Continued ...



Overall Results for sample 2 : BCLib BP 1:1

Number of peaks found: 8 Corr. Area 1: 413.3
 Noise: 0.2

Peak table for sample 2 : BCLib BP 1:1

Peak	Size [bp]	Conc. [pg/μl]	Molarity [pmol/l]	Observations	Aligned Migration Time [s]
1	35	125.00	5,411.3	Lower Marker	43.00
2	433	82.58	289.1		79.12
3	443	60.32	206.5		79.68
4	461	44.08	144.8		80.75
5	478	36.36	115.3		81.68
6	492	24.31	74.8		82.51
7	520	32.55	94.8		83.91
8	569	18.58	49.5		86.19
9	584	83.69	217.3		86.89
10	10,380	75.00	10.9	Upper Marker	113.00

Region table for sample 2 : BCLib BP 1:1

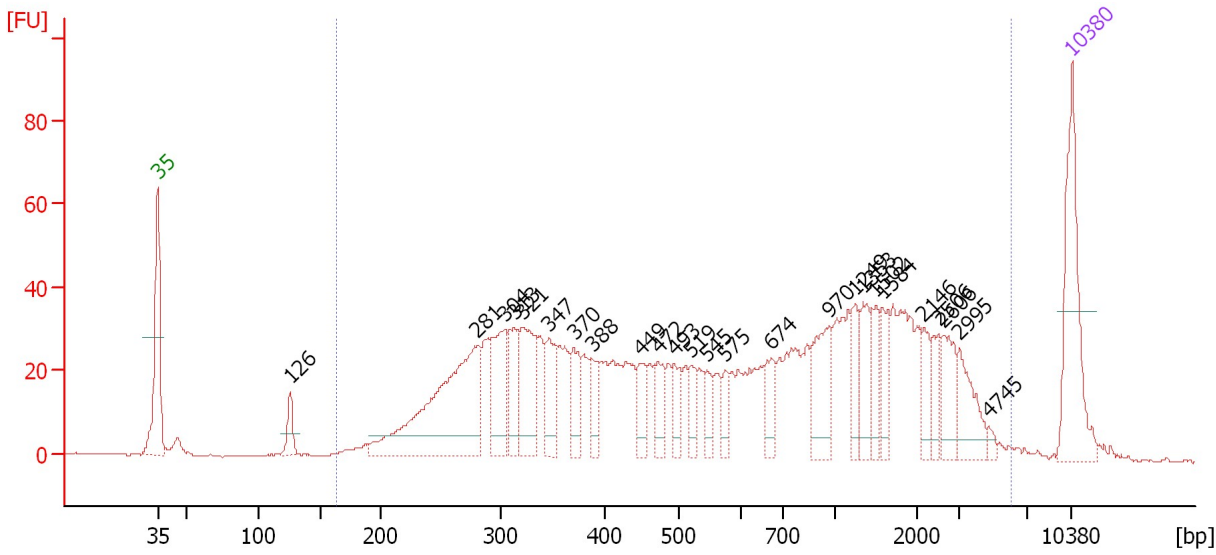
From [bp]	Average Size [bp]	To [bp]	Corr. Area	Molarity [pmol/l]	Co % of lor Total	Size distribution in CV [%]	Conc. [pg/μl]
371	514	795	413.3	1,419.7	90	14.5	469.29

Assay Class: High Sensitivity DNA Assay
 Data Path: C:\...ents and Settings\Bioanalyzer\2015-08-12\2015-08-12_001.xad

Created: 8/12/2015 3:29:34 PM
 Modified: 8/12/2015 4:39:20 PM

Electropherogram Summary Continued ...

1: Smad3 Endog lib (1:6) [HiSeq_176]



Overall Results for sample 3 : 1: Smad3 Endog lib (1:6)

Number of peaks found: 25 Corr. Area 1: 1,447.1
 Noise: 0.2

Peak table for sample 3 : 1: Smad3 Endog lib (1:6)

Peak	Size [bp]	Conc. [pg/μl]	Molarity [pmol/l]	Observations	Aligned Migration Time [s]
1	35	125.00	5,411.3	Lower Marker	43.00
2	126	22.02	265.8		53.16
3	281	216.58	1,167.8		67.48
4	304	74.06	368.7		69.56
5	313	36.42	176.2		70.27
6	321	75.29	354.9		70.93
7	347	36.82	160.9		72.97
8	370	33.55	137.3		74.86
9	388	21.60	84.4		76.27
10	449	23.85	80.4		80.06
11	472	26.28	84.4		81.33
12	493	22.46	69.0		82.56
13	519	17.67	51.6		83.84
14	545	15.92	44.3		85.07
15	575	15.26	40.2		86.48
16	674	24.66	55.5		89.98
17	970	43.86	68.5		94.38
18	1,249	22.78	27.6		96.36
19	1,353	28.77	32.2		97.02
20	1,502	20.07	20.2		97.97
21	1,584	24.01	23.0		98.49
22	2,146	17.65	12.5		101.61
23	2,506	14.78	8.9		102.79
24	2,606	26.16	15.2		103.12
25	2,995	32.54	16.5		104.40

Assay Class: High Sensitivity DNA Assay
 Data Path: C:\...ents and Settings\Bioanalyzer\2015-08-12\2015-08-12_001.xad

Created: 8/12/2015 3:29:34 PM
 Modified: 8/12/2015 4:39:20 PM

Electropherogram Summary Continued ...

... Peak table for sample 3 : 1: Smad3 Endog lib (1:6)

Peak	Size [bp]	Conc. [pg/μl]	Molarity [pmol/l]	Observations	Aligned Migration Time [s]
26	4,745	3.54	1.1		106.67
27	10,380	75.00	10.9	Upper Marker	113.00

Region table for sample 3 : 1: Smad3 Endog lib (1:6)

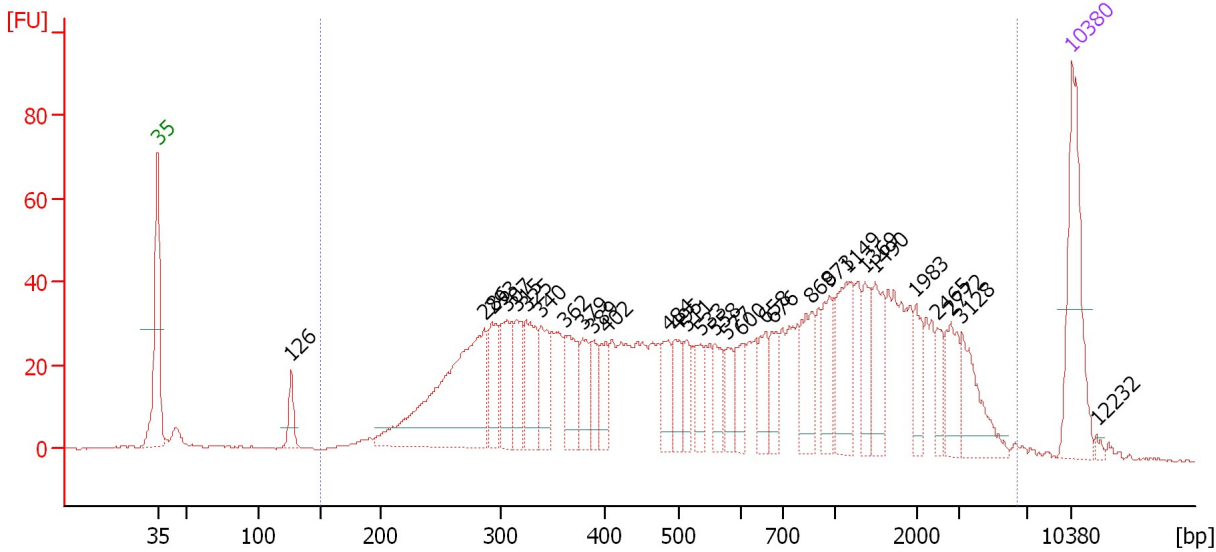
From [bp]	Average Size [bp]	To [bp]	Corr. Area	Molarity [pmol/l]	Co % of lor Total	Size distribution in CV [%]	Conc. [pg/μl]
163	979	6,083	1,447.1	5,131.8	97	93.9	1,518.25

Assay Class: High Sensitivity DNA Assay
 Data Path: C:\...ents and Settings\Bioanalyzer\2015-08-12\2015-08-12_001.xad

Created: 8/12/2015 3:29:34 PM
 Modified: 8/12/2015 4:39:20 PM

Electropherogram Summary Continued ...

2: Smad3 OE 1 lib (1:6) [HiSeq_176]



Overall Results for sample 4 : 2: Smad3 OE 1 lib (1:6)

Number of peaks found: 30 Corr. Area 1: 1,621.1
 Noise: 0.2

Peak table for sample 4 : 2: Smad3 OE 1 lib (1:6)

Peak	Size [bp]	Conc. [pg/μl]	Molarity [pmol/l]	Observations	Aligned Migration Time [s]
1	35	125.00	5,411.3	Lower Marker	43.00
2	126	25.11	300.9		53.25
3	286	220.74	1,168.0		67.97
4	293	43.81	226.4		68.59
5	307	48.61	240.2		69.75
6	315	45.18	217.2		70.42
7	325	55.02	256.8		71.19
8	340	42.37	189.0		72.40
9	362	43.34	181.2		74.22
10	379	33.43	133.8		75.52
11	389	23.37	91.1		76.34
12	402	27.61	104.1		77.35
13	484	29.98	93.8		82.07
14	495	26.69	81.6		82.69
15	511	20.87	61.9		83.46
16	533	24.31	69.1		84.52
17	558	26.04	70.7		85.67
18	577	20.77	54.5		86.59
19	600	23.48	59.3		87.65
20	658	25.84	59.5		89.47
21	676	25.08	56.2		90.05
22	868	41.67	72.7		93.03
23	973	32.15	50.0		94.43
24	1,149	54.98	72.5		95.73
25	1,369	27.55	30.5		97.12

Assay Class: High Sensitivity DNA Assay
 Data Path: C:\...ents and Settings\Bioanalyzer\2015-08-12\2015-08-12_001.xad

Created: 8/12/2015 3:29:34 PM
 Modified: 8/12/2015 4:39:20 PM

Electropherogram Summary Continued ...

... Peak table for sample 4 : 2: Smad3 OE 1 lib (1:6)

Peak	Size [bp]	Conc. [pg/μl]	Molarity [pmol/l]	Observations	Aligned Migration Time [s]
26	1,490	34.61	35.2		97.89
27	1,983	20.54	15.7		101.02
28	2,465	14.68	9.0		102.66
29	2,772	26.66	14.6		103.67
30	3,128	39.07	18.9		104.58
31	10,380	75.00	10.9	Upper Marker	113.00
32	12,232	0.00	0.0		114.88

Region table for sample 4 : 2: Smad3 OE 1 lib (1:6)

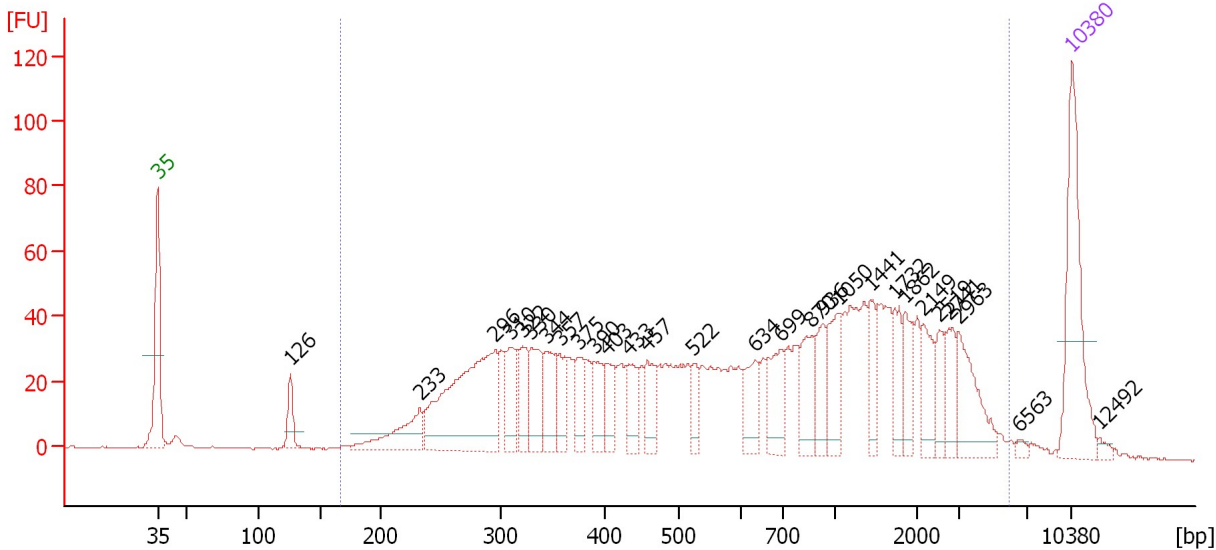
From [bp]	Average Size [bp]	To [bp]	Corr. Area	Molarity [pmol/l]	Co % of lor Total	Size distribution in CV [%]	Conc. [pg/μl]
150	987	6,376	1,621.1	5,392.4	96	94.8	1,631.78

Assay Class: High Sensitivity DNA Assay
 Data Path: C:\...ents and Settings\Bioanalyzer\2015-08-12\2015-08-12_001.xad

Created: 8/12/2015 3:29:34 PM
 Modified: 8/12/2015 4:39:20 PM

Electropherogram Summary Continued ...

3: Smad3 OE 2 lib (1:10) [HiSeq_176]



Overall Results for sample 5 : 3: Smad3 OE 2 lib (1:10)

Number of peaks found: 28 Corr. Area 1: 1,735.7
 Noise: 0.2

Peak table for sample 5 : 3: Smad3 OE 2 lib (1:10)

Peak	Size [bp]	Conc. [pg/μl]	Molarity [pmol/l]	Observations	Aligned Migration Time [s]
1	35	125.00	5,411.3	Lower Marker	43.00
2	126	23.05	278.1		53.17
3	233	46.85	305.1		63.09
4	296	178.52	914.4		68.83
5	310	36.84	179.8		70.05
6	322	30.12	141.8		70.97
7	330	42.65	196.0		71.60
8	344	36.43	160.6		72.72
9	357	27.39	116.2		73.79
10	375	27.35	110.5		75.25
11	390	28.25	109.8		76.42
12	403	21.34	80.3		77.39
13	433	26.18	91.6		79.14
14	457	26.16	86.7		80.51
15	522	16.64	48.3		84.01
16	634	27.79	66.4		88.73
17	699	36.56	79.3		90.77
18	870	32.89	57.3		93.06
19	936	25.82	41.8		93.93
20	1,050	35.56	51.3		95.10
21	1,441	21.47	22.6		97.58
22	1,732	20.55	18.0		99.43
23	1,862	23.12	18.8		100.26
24	2,149	23.56	16.6		101.62
25	2,519	16.43	9.9		102.83

Assay Class: High Sensitivity DNA Assay
 Data Path: C:\...ents and Settings\Bioanalyzer\2015-08-12\2015-08-12_001.xad

Created: 8/12/2015 3:29:34 PM
 Modified: 8/12/2015 4:39:20 PM

Electropherogram Summary Continued ...

... Peak table for sample 5 : 3: Smad3 OE 2 lib (1:10)

Peak	Size [bp]	Conc. [pg/μl]	Molarity [pmol/l]	Observations	Aligned Migration Time [s]
26	2,741	21.33	11.8		103.56
27	2,963	41.32	21.1		104.29
28	6,563	2.83	0.7		109.01
29	10,380	75.00	10.9	Upper Marker	113.00
30	12,492	0.00	0.0		115.14

Region table for sample 5 : 3: Smad3 OE 2 lib (1:10)

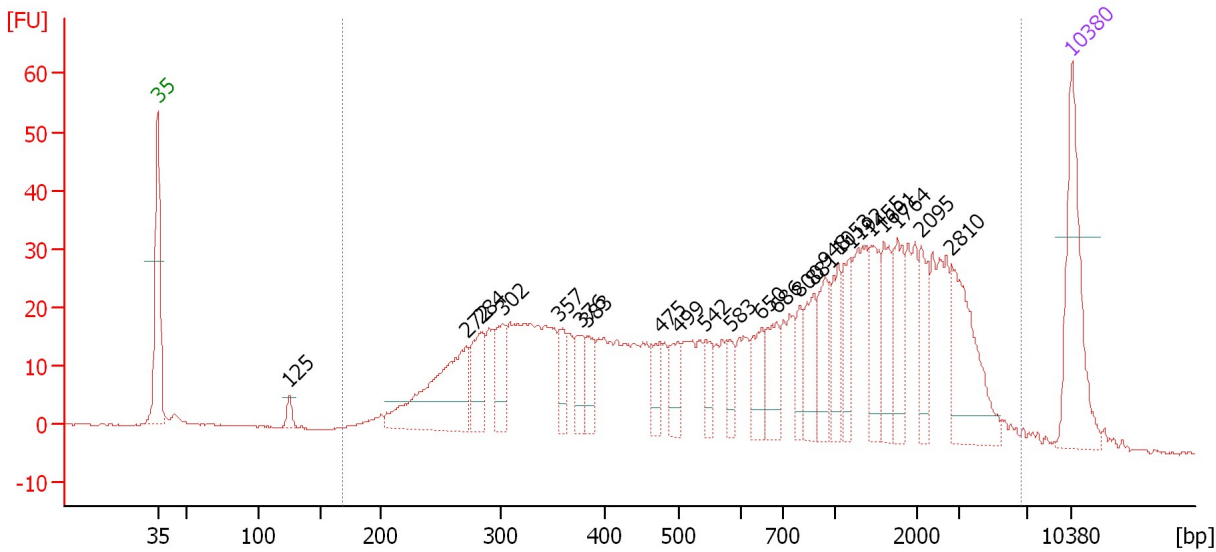
From [bp]	Average Size [bp]	To [bp]	Corr. Area	Molarity [pmol/l]	Co % of lor Total	Size distribution in CV [%]	Conc. [pg/μl]
167	1,041	5,944	1,735.7	4,330.1	96	92.8	1,344.74

Assay Class: High Sensitivity DNA Assay
 Data Path: C:\...ents and Settings\Bioanalyzer\2015-08-12\2015-08-12_001.xad

Created: 8/12/2015 3:29:34 PM
 Modified: 8/12/2015 4:39:20 PM

Electropherogram Summary Continued ...

4: Sox17 Endog (1:17) [HiSeq_176]



Overall Results for sample 6 : 4: Sox17 Endog (1:17)

Number of peaks found: 23 Corr. Area 1: 1,166.6
 Noise: 0.2

Peak table for sample 6 : 4: Sox17 Endog (1:17)


Peak	Size [bp]	Conc. [pg/μl]	Molarity [pmol/l]	Observations	Aligned Migration Time [s]
1	35	125.00	5,411.3	Lower Marker	43.00
2	125	10.05	122.0		53.09
3	272	132.45	738.0		66.66
4	284	45.62	243.1		67.79
5	302	36.61	183.4		69.40
6	357	23.93	101.7		73.76
7	376	28.30	114.0		75.33
8	383	22.69	89.6		75.92
9	475	22.45	71.7		81.50
10	499	26.56	80.7		82.87
11	542	20.13	56.3		84.93
12	583	16.67	43.4		86.84
13	650	31.34	73.0		89.24
14	686	33.85	74.7		90.37
15	800	20.73	39.3		92.13
16	881	30.99	53.3		93.21
17	948	33.43	53.4		94.09
18	1,053	30.76	44.2		95.12
19	1,192	28.35	36.0		96.00
20	1,455	31.12	32.4		97.67
21	1,601	35.93	34.0		98.60
22	1,764	33.51	28.8		99.63
23	2,095	28.69	20.8		101.44
24	2,810	70.79	38.2		103.79
25	10,380	75.00	10.9	Upper Marker	113.00

Assay Class: High Sensitivity DNA Assay
Data Path: C:\...ents and Settings\Bioanalyzer\2015-08-12\2015-08-12_001.xad

Created: 8/12/2015 3:29:34 PM
Modified: 8/12/2015 4:39:20 PM

Electropherogram Summary Continued ...

... Region table for sample 6 : **4: Sox17 Endog (1:17)**

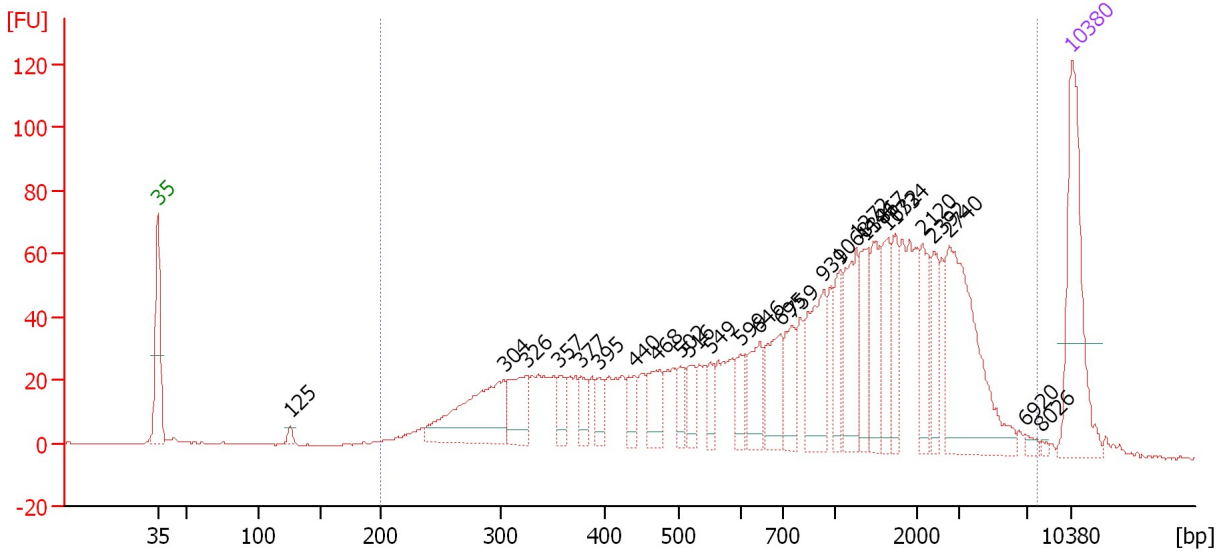
From [bp]	Average Size [bp]	To [bp]	Corr. Area	Molarity [pmol/l]	Co % of lor Total	Size distribution in CV [%]	Conc. [pg/μl]
169	1,153	6,682	1,166.6	4,878.1	 96	92.1	1,586.26

Assay Class: High Sensitivity DNA Assay
 Data Path: C:\...ents and Settings\Bioanalyzer\2015-08-12\2015-08-12_001.xad

Created: 8/12/2015 3:29:34 PM
 Modified: 8/12/2015 4:39:20 PM

Electropherogram Summary Continued ...

5: Sox17 OE 1 (1:20) [HiSeq_176]



Overall Results for sample 7 : 5: Sox17 OE 1 (1:20)

Number of peaks found: 27 Corr. Area 1: 1,838.1
 Noise: 0.2

Peak table for sample 7 : 5: Sox17 OE 1 (1:20)

Peak	Size [bp]	Conc. [pg/μl]	Molarity [pmol/l]	Observations	Aligned Migration Time [s]
1	35	125.00	5,411.3	Lower Marker	43.00
2	125	5.22	63.1		53.13
3	304	96.47	480.8		69.53
4	326	37.78	175.8		71.27
5	357	14.82	63.0		73.75
6	377	15.01	60.3		75.39
7	395	14.40	55.2		76.83
8	440	17.33	59.7		79.52
9	468	28.00	90.5		81.15
10	502	14.57	44.0		83.04
11	516	17.88	52.5		83.69
12	549	14.22	39.2		85.28
13	599	14.61	36.9		87.61
14	646	30.46	71.5		89.10
15	695	38.60	84.2		90.64
16	759	28.06	56.0		91.59
17	939	53.55	86.4		93.97
18	1,068	22.84	32.4		95.21
19	1,272	49.27	58.7		96.51
20	1,381	26.72	29.3		97.20
21	1,467	34.52	35.6		97.75
22	1,632	30.32	28.2		98.79
23	1,734	24.43	21.4		99.44
24	2,120	28.94	20.7		101.52
25	2,392	21.42	13.6		102.42

Assay Class: High Sensitivity DNA Assay
 Data Path: C:\...ents and Settings\Bioanalyzer\2015-08-12\2015-08-12_001.xad

Created: 8/12/2015 3:29:34 PM
 Modified: 8/12/2015 4:39:20 PM

Electropherogram Summary Continued ...

... Peak table for sample 7 : 5: Sox17 OE 1 (1:20)

Peak	Size [bp]	Conc. [pg/μl]	Molarity [pmol/l]	Observations	Aligned Migration Time [s]
26	2,740	99.94	55.3		103.56
27	6,920	3.18	0.7		109.47
28	8,026	1.47	0.3		110.62
29	10,380	75.00	10.9	Upper Marker	113.00

Region table for sample 7 : 5: Sox17 OE 1 (1:20)

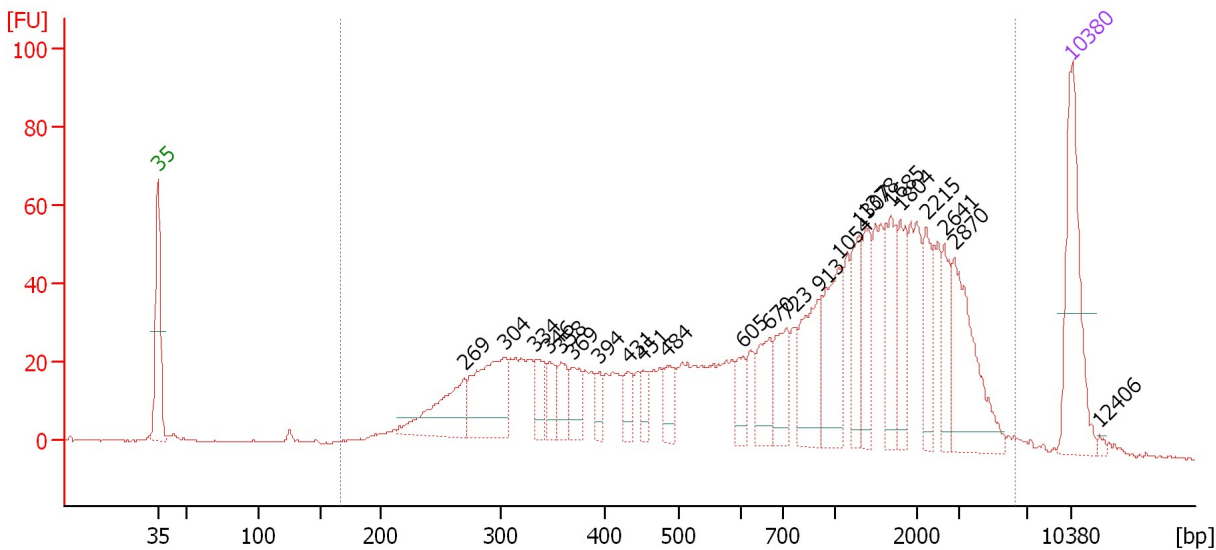
From [bp]	Average Size [bp]	To [bp]	Corr. Area	Molarity [pmol/l]	Co % of lor Total	Size distribution in CV [%]	Conc. [pg/μl]
200	1,362	7,732	1,838.1	3,072.5	96	88.1	1,197.01

Assay Class: High Sensitivity DNA Assay
 Data Path: C:\...ents and Settings\Bioanalyzer\2015-08-12\2015-08-12_001.xad

Created: 8/12/2015 3:29:34 PM
 Modified: 8/12/2015 4:39:20 PM

Electropherogram Summary Continued ...

6: Sox17 OE 2 (1:21) [HiSeq_176]



Overall Results for sample 8 : 6: Sox17 OE 2 (1:21)

Number of peaks found: 23 Corr. Area 1: 1,565.5
 Noise: 0.3

Peak table for sample 8 : 6: Sox17 OE 2 (1:21)


Peak	Size [bp]	Conc. [pg/μl]	Molarity [pmol/l]	Observations	Aligned Migration Time [s]
1	35	125.00	5,411.3	Lower Marker	43.00
2	269	70.42	396.0		66.43
3	304	91.44	455.6		69.54
4	334	25.26	114.6		71.94
5	346	20.95	91.6		72.94
6	358	25.26	106.8		73.89
7	369	24.87	102.1		74.75
8	394	14.50	55.8		76.75
9	431	15.25	53.7		79.00
10	451	14.49	48.7		80.15
11	484	19.69	61.6		82.06
12	605	18.07	45.3		87.81
13	670	36.30	82.1		89.87
14	723	36.56	76.6		91.12
15	913	57.91	96.2		93.62
16	1,054	58.24	83.7		95.12
17	1,307	36.35	42.2		96.73
18	1,378	35.64	39.2		97.18
19	1,685	41.86	37.6		99.13
20	1,804	31.84	26.7		99.88
21	2,215	34.66	23.7		101.83
22	2,641	24.84	14.2		103.24
23	2,870	72.60	38.3		103.99
24	10,380	75.00	10.9	Upper Marker	113.00
25	12,406	0.00	0.0		115.05

Assay Class: High Sensitivity DNA Assay
Data Path: C:\...ents and Settings\Bioanalyzer\2015-08-12\2015-08-12_001.xad

Created: 8/12/2015 3:29:34 PM
Modified: 8/12/2015 4:39:20 PM

Electropherogram Summary Continued ...

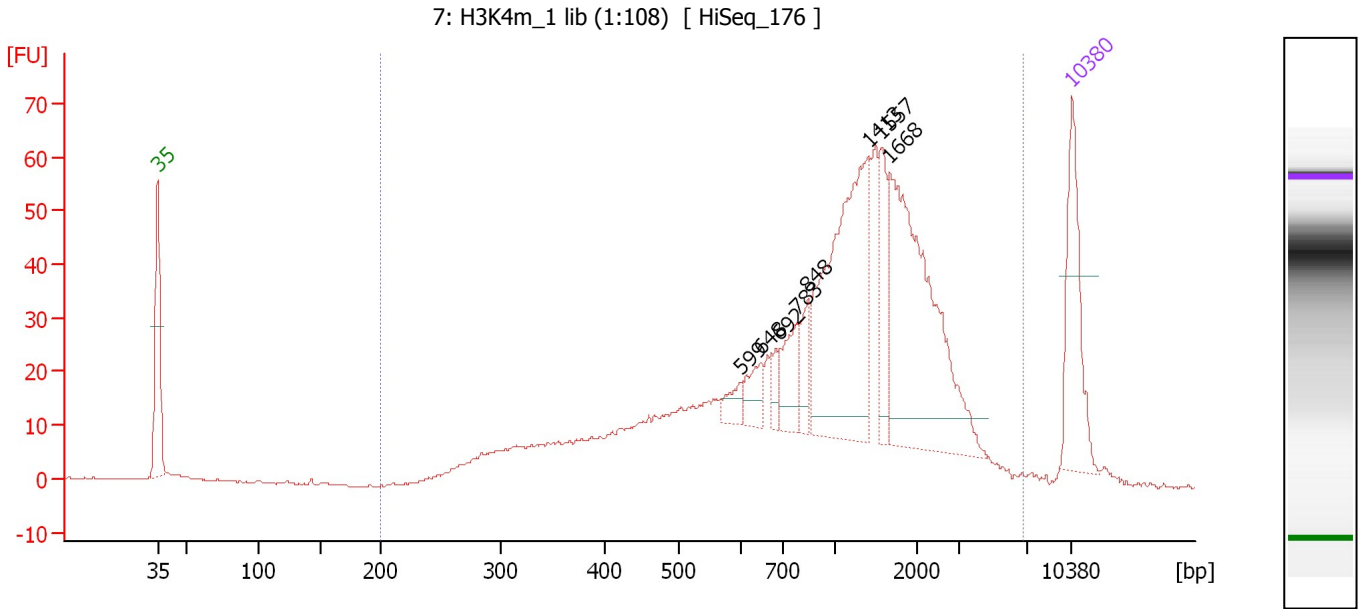
... Region table for sample 8 : **6: Sox17 OE 2 (1:21)**

From [bp]	Average Size [bp]	To [bp]	Corr. Area	Molarity [pmol/l]	Co % of lor Total	Size distribution in CV [%]	Conc. [pg/μl]
167	1,238	6,248	1,565.5	3,908.1	 97	82.9	1,394.24

Assay Class: High Sensitivity DNA Assay
 Data Path: C:\...ents and Settings\Bioanalyzer\2015-08-12\2015-08-12_001.xad

Created: 8/12/2015 3:29:34 PM
 Modified: 8/12/2015 4:39:20 PM

Electropherogram Summary Continued ...



Overall Results for sample 9 : 7: H3K4m 1 lib (1:108)

Number of peaks found: 8 Corr. Area 1: 1,032.1
 Noise: 0.2

Peak table for sample 9 : 7: H3K4m 1 lib (1:108)

Peak	Size [bp]	Conc. [pg/μl]	Molarity [pmol/l]	Observations	Aligned Migration Time [s]
1	35	125.00	5,411.3	Lower Marker	43.00
2	599	15.41	39.0		87.61
3	648	25.49	59.6		89.18
4	692	15.19	33.3		90.54
5	783	38.87	75.2		91.90
6	848	25.17	45.0		92.76
7	1,413	222.23	238.2		97.41
8	1,557	44.93	43.7		98.31
9	1,668	229.58	208.5		99.02
10	10,380	75.00	10.9	Upper Marker	113.00

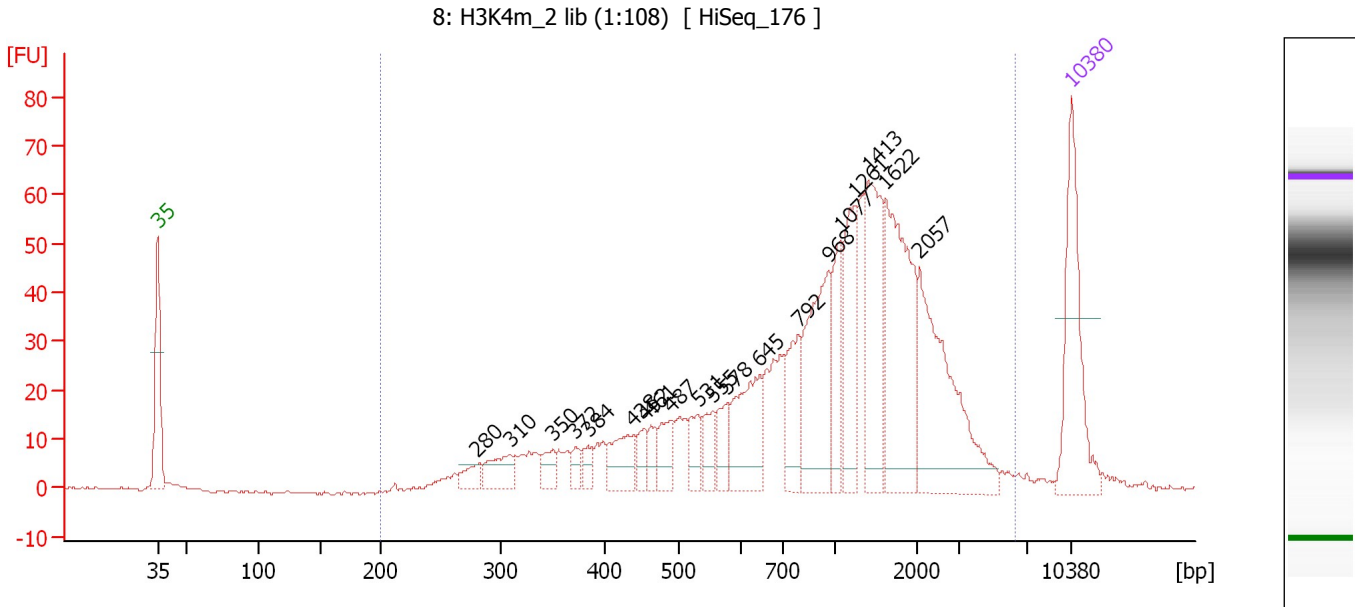
Region table for sample 9 : 7: H3K4m 1 lib (1:108)

From [bp]	Average Size [bp]	To [bp]	Corr. Area	Molarity [pmol/l]	Co % of Ior Total	Size distribution in CV [%]	Conc. [pg/μl]
200	1,294	6,790	1,032.1	2,817.9	97	69.8	1,351.49

Assay Class: High Sensitivity DNA Assay
 Data Path: C:\...ents and Settings\Bioanalyzer\2015-08-12\2015-08-12_001.xad

Created: 8/12/2015 3:29:34 PM
 Modified: 8/12/2015 4:39:20 PM

Electropherogram Summary Continued ...



Overall Results for sample 10 : 8: H3K4m 2 lib (1:108)

Number of peaks found: 20 Corr. Area 1: 1,059.2
 Noise: 0.3

Peak table for sample 10 : 8: H3K4m 2 lib (1:108)


Peak	Size [bp]	Conc. [pg/μl]	Molarity [pmol/l]	Observations	Aligned Migration Time [s]
1	35	125.00	5,411.3	Lower Marker	43.00
2	280	14.04	75.8		67.43
3	310	27.15	132.9		69.97
4	350	14.64	63.4		73.22
5	372	9.66	39.4		75.00
6	384	9.77	38.6		75.97
7	438	33.42	115.6		79.42
8	452	13.61	45.6		80.24
9	461	13.47	44.2		80.74
10	487	24.28	75.5		82.22
11	531	19.94	56.9		84.40
12	555	21.23	58.0		85.52
13	578	20.01	52.4		86.64
14	645	64.47	151.5		89.07
15	792	47.19	90.3		92.02
16	968	92.88	145.4		94.36
17	1,077	38.55	54.2		95.27
18	1,261	62.58	75.2		96.44
19	1,413	85.24	91.4		97.40
20	1,622	121.79	113.8		98.73
21	2,057	117.79	86.7		101.32
22	10,380	75.00	10.9	Upper Marker	113.00

Assay Class: High Sensitivity DNA Assay
Data Path: C:\...ents and Settings\Bioanalyzer\2015-08-12\2015-08-12_001.xad

Created: 8/12/2015 3:29:34 PM
Modified: 8/12/2015 4:39:20 PM

Electropherogram Summary Continued ...

... Region table for sample 10 : **8: H3K4m 2 lib (1:108)**

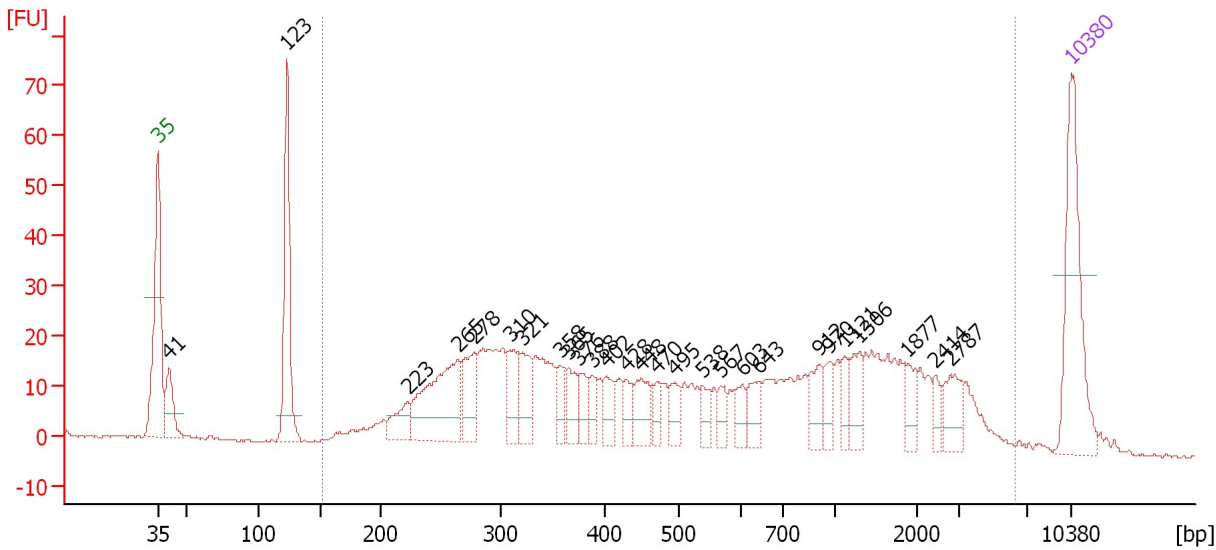
From [bp]	Average Size [bp]	To [bp]	Corr. Area	Molarity [pmol/l]	Co % of lor Total	Size distribution in CV [%]	Conc. [pg/μl]
200	1,275	6,295	1,059.2	2,337.3	 96	70.2	1,099.74

Assay Class: High Sensitivity DNA Assay
 Data Path: C:\...ents and Settings\Bioanalyzer\2015-08-12\2015-08-12_001.xad

Created: 8/12/2015 3:29:34 PM
 Modified: 8/12/2015 4:39:20 PM

Electropherogram Summary Continued ...

9: IgG Rabbit 1 lib (1:2) [HiSeq_176]



Overall Results for sample 11 : 9: IgG Rabbit 1 lib (1:2)

Number of peaks found: 27 Corr. Area 1: 841.5
 Noise: 0.2

Peak table for sample 11 : 9: IgG Rabbit 1 lib (1:2)

Peak	Size [bp]	Conc. [pg/μl]	Molarity [pmol/l]	Observations	Aligned Migration Time [s]
1	35	125.00	5,411.3	Lower Marker	43.00
2	41	38.51	1,433.5		43.87
3	123	119.29	1,473.0		52.90
4	223	24.54	167.0		62.18
5	265	102.82	588.4		66.01
6	278	38.25	208.3		67.23
7	310	30.87	150.7		70.04
8	321	32.22	152.0		70.91
9	358	17.71	75.0		73.87
10	365	22.74	94.4		74.43
11	376	16.59	66.9		75.30
12	388	14.58	57.0		76.27
13	402	18.02	68.0		77.34
14	428	14.07	49.8		78.87
15	448	27.57	93.2		79.99
16	470	12.47	40.2		81.27
17	495	16.73	51.2		82.64
18	538	11.69	32.9		84.73
19	567	11.93	31.9		86.11
20	603	13.97	35.1		87.74
21	643	17.58	41.4		89.02
22	912	20.23	33.6		93.61
23	970	14.44	22.6		94.38
24	1,121	12.77	17.3		95.55
25	1,306	19.62	22.8		96.72

Assay Class: High Sensitivity DNA Assay
 Data Path: C:\...ents and Settings\Bioanalyzer\2015-08-12\2015-08-12_001.xad

Created: 8/12/2015 3:29:34 PM
 Modified: 8/12/2015 4:39:20 PM

Electropherogram Summary Continued ...

... Peak table for sample 11 : 9: IgG Rabbit 1 lib (1:2)

Peak	Size [bp]	Conc. [pg/μl]	Molarity [pmol/l]	Observations	Aligned Migration Time [s]
26	1,877	12.56	10.1		100.35
27	2,414	9.03	5.7		102.49
28	2,787	20.21	11.0		103.71
29	10,380	75.00	10.9	Upper Marker	113.00

Region table for sample 11 : 9: IgG Rabbit 1 lib (1:2)

From [bp]	Average Size [bp]	To [bp]	Corr. Area	Molarity [pmol/l]	Co % of lor Total	Size distribution in CV [%]	Conc. [pg/μl]
151	933	6,230	841.5	3,703.8	89	100.0	1,014.49

Assay Class: High Sensitivity DNA Assay
Data Path: C:\...ents and Settings\Bioanalyzer\2015-08-12\2015-08-12_001.xad

Created: 8/12/2015 3:29:34 PM
Modified: 8/12/2015 4:39:20 PM

Gel Image

