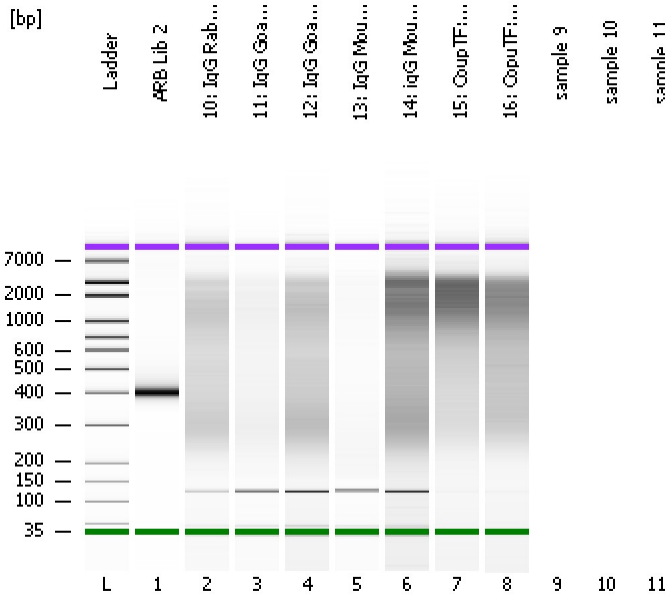


Assay Class: High Sensitivity DNA Assay  
Data Path: C:\...ents and Settings\Bioanalyzer\2015-08-12\2015-08-12\_002.xad

Created: 8/12/2015 4:22:33 PM  
Modified: 8/12/2015 5:06:56 PM

**Electrophoresis File Run Summary**



Instrument Information:

Instrument Name: DE13701086      Firmware: C.01.069  
Serial#: DE13701086      Type: G2938B

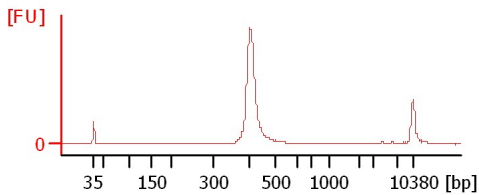
Assay Information:

Assay Origin Path: C:\Program Files\Agilent\2100 bioanalyzer\2100 expert\assays\dsDNA\High Sensitivity DNA.xsy  
Assay Class: High Sensitivity DNA Assay  
Version: 1.03  
Assay Comments: Copyright © 2003-2010 Agilent Technologies

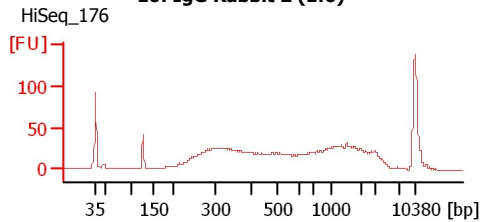
Chip Information:

Chip Lot #:   
Reagent Kit Lot #:   
Chip Comments:

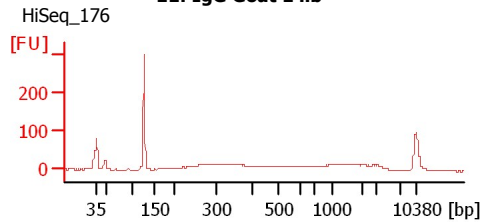
**ARB Lib 2**



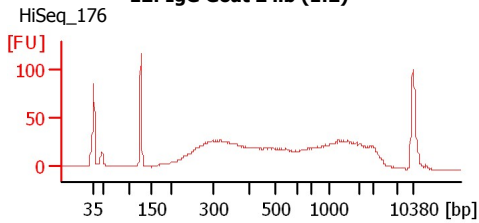
**10: IgG Rabbit 2 (1:6)**



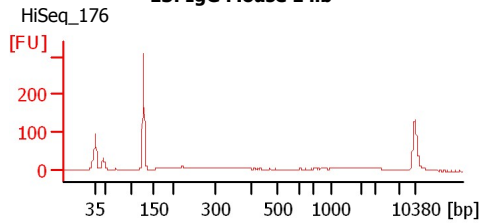
**11: IgG Goat 1 lib**



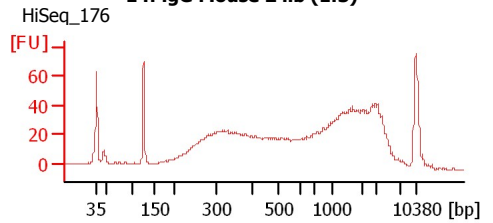
**12: IgG Goat 2 lib (1:2)**



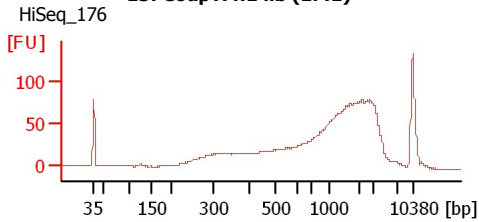
**13: IgG Mouse 1 lib**



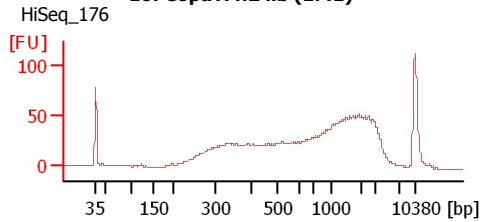
**14: igG Mouse 2 lib (1:3)**



**15: CoupTF::1 lib (1:41)**



**16: CopuTF::2 lib (1:41)**



Assay Class: High Sensitivity DNA Assay  
Data Path: C:\...ents and Settings\Bioanalyzer\2015-08-12\2015-08-12\_002.xad

Created: 8/12/2015 4:22:33 PM  
Modified: 8/12/2015 5:06:56 PM

**Electrophoresis File Run Summary (Chip Summary)**

Sample Name	Sample Comment	Rest. Digest	Status	Observation	Result Label	Result Color
ARB Lib 2		<input type="checkbox"/>				
10: IgG Rabbit 2 (1:6)	HiSeq_176	<input type="checkbox"/>	✓			
11: IgG Goat 1 lib	HiSeq_176	<input type="checkbox"/>	✓			
12: IgG Goat 2 lib (1:2)	HiSeq_176	<input type="checkbox"/>	✓			
13: IgG Mouse 1 lib	HiSeq_176	<input type="checkbox"/>	✓			
14: igG Mouse 2 lib (1:3)	HiSeq_176	<input type="checkbox"/>	✓			
15: CoupTF::1 lib (1:41)	HiSeq_176	<input type="checkbox"/>	✓			
16: CopuTF::2 lib (1:41)	HiSeq_176	<input type="checkbox"/>	✓			
sample 9		<input type="checkbox"/>				
sample 10		<input type="checkbox"/>				
sample 11		<input type="checkbox"/>				
Ladder		<input type="checkbox"/>	✓			

**Chip Lot #**

**Reagent Kit Lot #**

**Chip Comments :**

Assay Class: High Sensitivity DNA Assay  
Data Path: C:\...ents and Settings\Bioanalyzer\2015-08-12\2015-08-12\_002.xad

Created: 8/12/2015 4:22:33 PM  
Modified: 8/12/2015 5:06:56 PM

## Electrophoresis Assay Details

### General Analysis Settings

Number of Available Sample and Ladder Wells (Max.) : 12  
Minimum Visible Range [s] : 32  
Maximum Visible Range [s] : 138  
Start Analysis Time Range [s] : 33  
End Analysis Time Range [s] : 137.5  
Ladder Concentration [pg/ $\mu$ l] : 1950  
Uses Standard Area for Ladder Fragments  
Lower Marker Concentration [pg/ $\mu$ l] : 125  
Upper Marker Concentration [pg/ $\mu$ l] : 75  
Used Upper Marker for Quantitation  
Standard Curve Fit is Point to Point  
Show Data Aligned to Lower and Upper Marker

### Integrator Settings

Integration Start Time [s] : 33.05  
Integration End Time [s] : 137  
Slope Threshold : 0.8  
Height Threshold [FU] : 5  
Area Threshold : 0.1  
Width Threshold [s] : 0.6  
Baseline Plateau [s] : 0.5

### Filter Settings

Filter Width [s] : 0.5  
Polynomial Order : 4

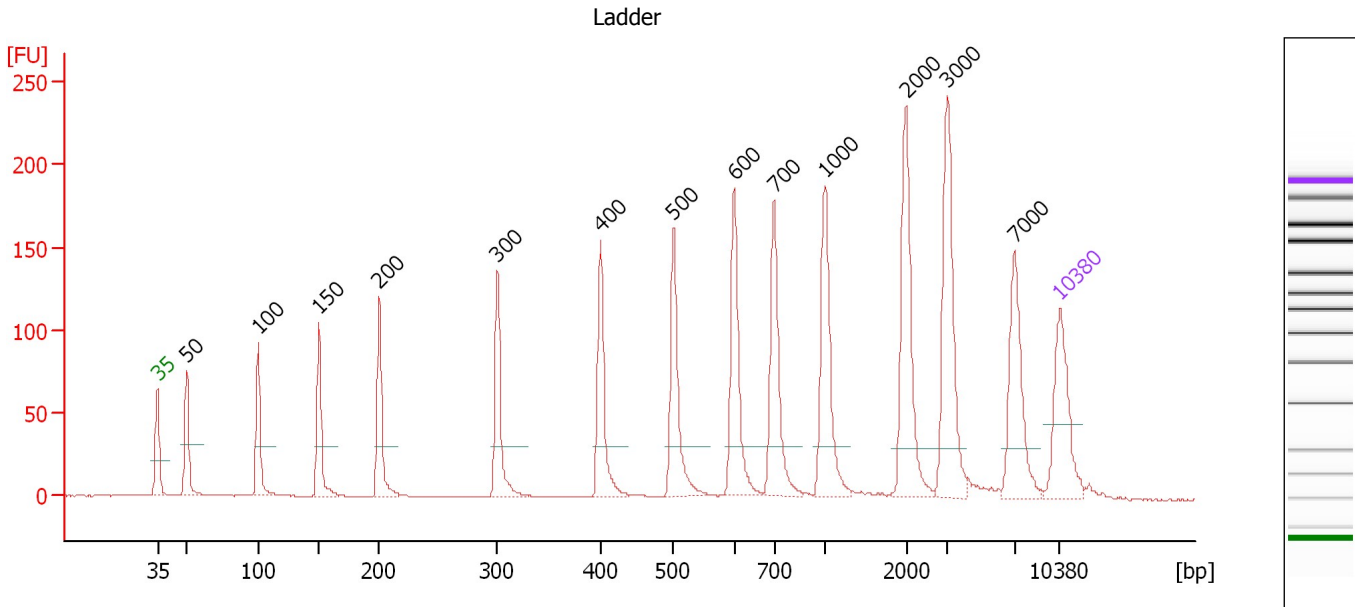
### Ladder

Ladder Peak	Size	Area
1	35	160
2	50	210
3	100	208
4	150	221
5	200	242
6	300	270
7	400	305
8	500	306
9	600	336
10	700	321
11	1000	366
12	2000	413
13	3000	411
14	7000	400
15	10380	214

Assay Class: High Sensitivity DNA Assay  
 Data Path: C:\...ents and Settings\Bioanalyzer\2015-08-12\2015-08-12\_002.xad

Created: 8/12/2015 4:22:33 PM  
 Modified: 8/12/2015 5:06:56 PM

**Electropherogram Summary**



**Overall Results for Ladder**

Noise: 0.2

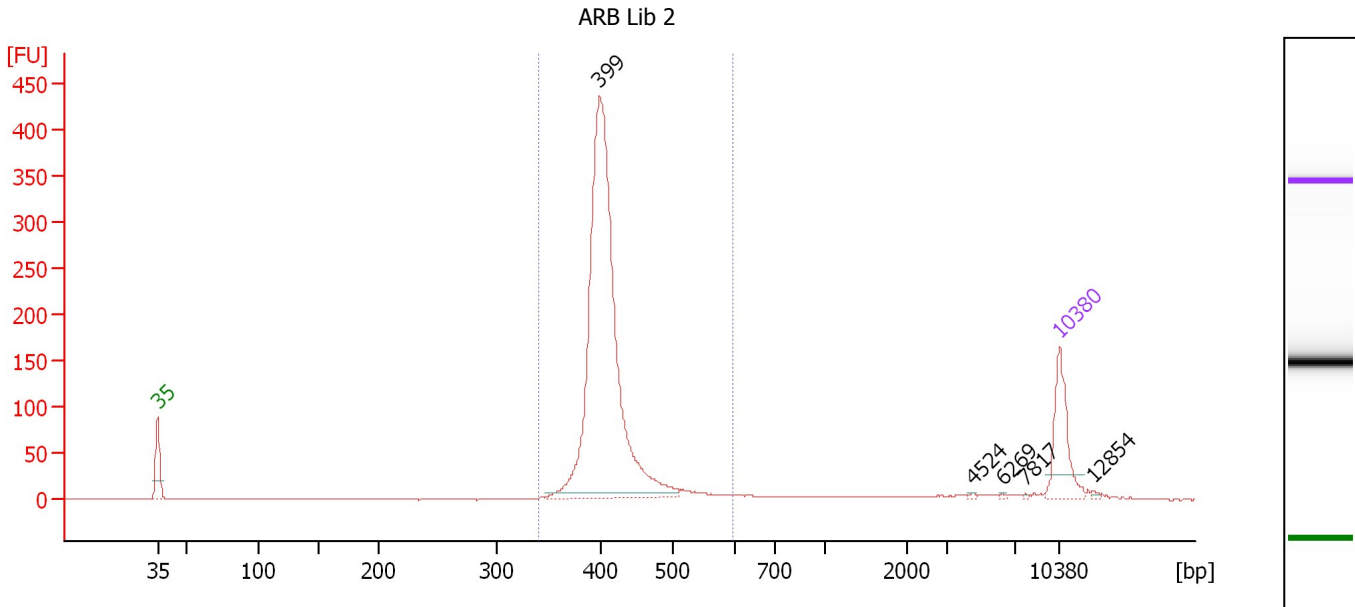
**Peak table for Ladder**

Peak	Size [bp]	Conc. [pg/μl]	Molarity [pmol/l]	Observations	Aligned Migration Time [s]
1	35	125.00	5,411.3	Lower Marker	43.00
2	50	150.00	4,545.5	Ladder Peak	45.28
3	100	150.00	2,272.7	Ladder Peak	50.81
4	150	150.00	1,515.2	Ladder Peak	55.52
5	200	150.00	1,136.4	Ladder Peak	60.23
6	300	150.00	757.6	Ladder Peak	69.36
7	400	150.00	568.2	Ladder Peak	77.36
8	500	150.00	454.5	Ladder Peak	83.03
9	600	150.00	378.8	Ladder Peak	87.73
10	700	150.00	324.7	Ladder Peak	90.84
11	1,000	150.00	227.3	Ladder Peak	94.81
12	2,000	150.00	113.6	Ladder Peak	101.07
13	3,000	150.00	75.8	Ladder Peak	104.32
14	7,000	150.00	32.5	Ladder Peak	109.48
15	10,380	75.00	10.9	Upper Marker	113.00

Assay Class: High Sensitivity DNA Assay  
 Data Path: C:\...ents and Settings\Bioanalyzer\2015-08-12\2015-08-12\_002.xad

Created: 8/12/2015 4:22:33 PM  
 Modified: 8/12/2015 5:06:56 PM

**Electropherogram Summary Continued ...**



**Overall Results for sample 1 : ARB Lib 2**

Number of peaks found: 5                      Corr. Area 1: 1,465.2  
 Noise: 0.2

**Peak table for sample 1 : ARB Lib 2**

Peak	Size [bp]	Conc. [pg/μl]	Molarity [pmol/l]	Observations	Aligned Migration Time [s]
1	35	125.00	5,411.3	Lower Marker	43.00
2	399	841.63	3,193.0		77.31
3	4,524	1.59	0.5		106.29
4	6,269	1.15	0.3		108.54
5	7,817	1.12	0.2		110.33
6	10,380	75.00	10.9	Upper Marker	113.00
7	12,854	0.00	0.0		115.58

**Region table for sample 1 : ARB Lib 2**

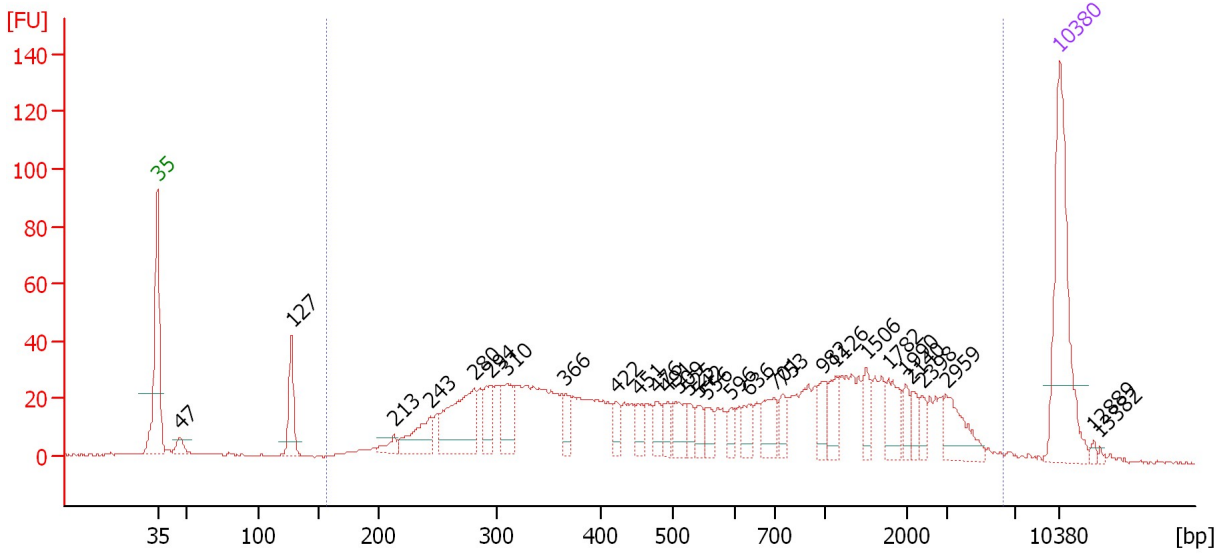
From [bp]	Average Size [bp]	To [bp]	Corr. Area	Molarity [pmol/l]	Co % of Ior Total	Size distribution in CV [%]	Conc. [pg/μl]
341	413	598	1,465.2	3,290.3	88	8.2	890.71

Assay Class: High Sensitivity DNA Assay  
 Data Path: C:\...ents and Settings\Bioanalyzer\2015-08-12\2015-08-12\_002.xad

Created: 8/12/2015 4:22:33 PM  
 Modified: 8/12/2015 5:06:56 PM

**Electropherogram Summary Continued ...**

10: IgG Rabbit 2 (1:6) [ HiSeq\_176 ]



**Overall Results for sample 2 : 10: IgG Rabbit 2 (1:6)**

Number of peaks found: 30                      Corr. Area 1: 1,263.7  
 Noise: 0.2

**Peak table for sample 2 : 10: IgG Rabbit 2 (1:6)**

Peak	Size [bp]	Conc. [pg/μl]	Molarity [pmol/l]	Observations	Aligned Migration Time [s]
1	35	125.00	5,411.3	Lower Marker	43.00
2	47	10.42	338.4		44.77
3	127	37.34	443.8		53.40
4	213	8.30	59.2		61.37
5	243	30.70	191.3		64.17
6	280	66.65	360.8		67.53
7	294	23.88	123.0		68.84
8	310	28.95	141.6		70.14
9	366	13.96	57.7		74.67
10	422	11.12	40.0		78.58
11	451	12.32	41.4		80.26
12	476	11.55	36.8		81.66
13	491	10.69	33.0		82.50
14	509	16.49	49.1		83.43
15	525	9.20	26.5		84.23
16	542	9.41	26.3		85.02
17	556	10.08	27.5		85.67
18	596	8.28	21.0		87.54
19	636	12.18	29.0		88.84
20	701	19.99	43.2		90.85
21	753	11.09	22.3		91.55
22	982	13.53	20.9		94.58
23	1,126	14.46	19.4		95.60
24	1,506	11.92	12.0		97.98
25	1,782	18.15	15.4		99.71

Assay Class: High Sensitivity DNA Assay  
 Data Path: C:\...ents and Settings\Bioanalyzer\2015-08-12\2015-08-12\_002.xad

Created: 8/12/2015 4:22:33 PM  
 Modified: 8/12/2015 5:06:56 PM

**Electropherogram Summary Continued ...**

**... Peak table for sample 2 : 10: IgG Rabbit 2 (1:6)**

Peak	Size [bp]	Conc. [pg/μl]	Molarity [pmol/l]	Observations	Aligned Migration Time [s]
26	1,990	8.54	6.5		101.01
27	2,140	7.92	5.6		101.53
28	2,398	6.90	4.4		102.37
29	2,959	23.94	12.3		104.19
30	10,380	75.00	10.9	Upper Marker	113.00
31	12,889	0.00	0.0		115.61
32	13,382	0.00	0.0		116.12

**Region table for sample 2 : 10: IgG Rabbit 2 (1:6)**

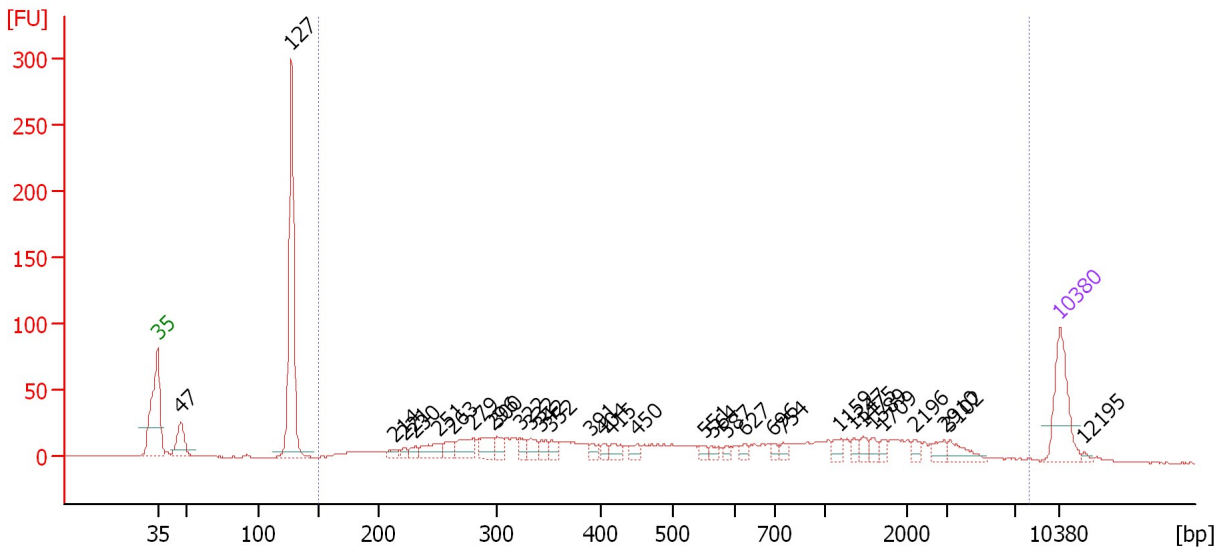
From [bp]	Average Size [bp]	To [bp]	Corr. Area	Molarity [pmol/l]	Co % of lor Total	Size distribution in CV [%]	Conc. [pg/μl]
157	968	6,319	1,263.7	2,975.7	92	99.3	854.56

Assay Class: High Sensitivity DNA Assay  
 Data Path: C:\...ents and Settings\Bioanalyzer\2015-08-12\2015-08-12\_002.xad

Created: 8/12/2015 4:22:33 PM  
 Modified: 8/12/2015 5:06:56 PM

**Electropherogram Summary Continued ...**

11: IgG Goat 1 lib [ HiSeq\_176 ]



**Overall Results for sample 3 : 11: IgG Goat 1 lib**

Number of peaks found: 33                      Corr. Area 1: 773.7  
 Noise: 0.2

**Peak table for sample 3 : 11: IgG Goat 1 lib**

Peak	Size [bp]	Conc. [pg/μl]	Molarity [pmol/l]	Observations	Aligned Migration Time [s]
1	35	125.00	5,411.3	Lower Marker	43.00
2	47	62.47	2,023.1		44.79
3	127	372.07	4,425.3		53.39
4	214	12.70	90.1		61.47
5	221	9.00	61.7		62.13
6	230	11.96	78.7		62.98
7	251	35.27	213.1		64.87
8	263	19.00	109.6		65.96
9	279	38.53	209.4		67.42
10	296	32.94	168.7		68.98
11	300	19.76	99.8		69.36
12	322	14.43	67.8		71.15
13	332	17.94	81.8		71.95
14	342	14.50	64.2		72.76
15	352	13.89	59.8		73.51
16	391	11.93	46.2		76.68
17	404	8.95	33.6		77.57
18	415	14.86	54.2		78.24
19	450	14.02	47.2		80.17
20	551	9.16	25.2		85.42
21	564	8.25	22.2		86.03
22	587	6.58	17.0		87.12
23	627	10.67	25.8		88.58
24	696	7.92	17.2		90.71
25	754	9.12	18.3		91.56



Assay Class: High Sensitivity DNA Assay  
 Data Path: C:\...ents and Settings\Bioanalyzer\2015-08-12\2015-08-12\_002.xad

Created: 8/12/2015 4:22:33 PM  
 Modified: 8/12/2015 5:06:56 PM

**Electropherogram Summary Continued ...**

**... Peak table for sample 3 : 11: IgG Goat 1 lib**

Peak	Size [bp]	Conc. [pg/μl]	Molarity [pmol/l]	Observations	Aligned Migration Time [s]
26	1,159	12.25	16.0		95.81
27	1,347	8.21	9.2		96.99
28	1,475	10.89	11.2		97.79
29	1,589	9.09	8.7		98.50
30	1,709	8.55	7.6		99.26
31	2,196	8.73	6.0		101.71
32	2,910	12.08	6.3		104.03
33	3,102	19.29	9.4		104.45
34	10,380	75.00	10.9	Upper Marker	113.00
35	12,195	0.00	0.0		114.89

**Region table for sample 3 : 11: IgG Goat 1 lib**

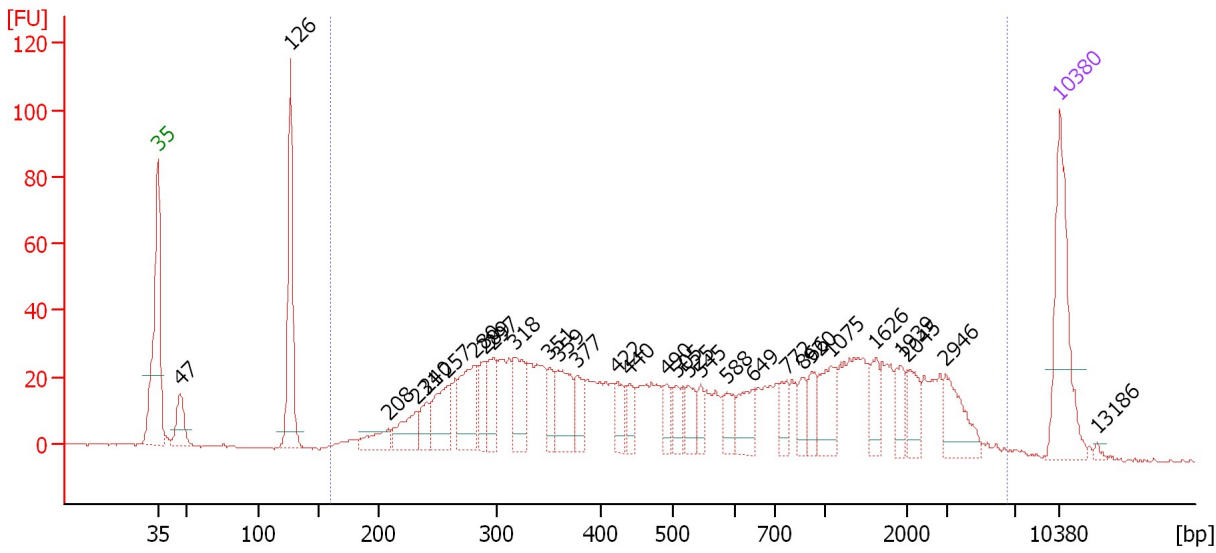
From [bp]	Average Size [bp]	To [bp]	Corr. Area	Molarity [pmol/l]	Co % of lor Total	Size distribution in CV [%]	Conc. [pg/μl]
150	1,021	8,052	773.7	2,735.4	70	100.0	731.75

Assay Class: High Sensitivity DNA Assay  
 Data Path: C:\...ents and Settings\Bioanalyzer\2015-08-12\2015-08-12\_002.xad

Created: 8/12/2015 4:22:33 PM  
 Modified: 8/12/2015 5:06:56 PM

**Electropherogram Summary Continued ...**

12: IgG Goat 2 lib (1:2) [ HiSeq\_176 ]



**Overall Results for sample 4 : 12: IgG Goat 2 lib (1:2)**

Number of peaks found: 30                      Corr. Area 1: 1,270.4  
 Noise: 0.2

**Peak table for sample 4 : 12: IgG Goat 2 lib (1:2)**

Peak	Size [bp]	Conc. [pg/μl]	Molarity [pmol/l]	Observations	Aligned Migration Time [s]
1	35	125.00	5,411.3	Lower Marker	43.00
2	47	37.72	1,225.5		44.77
3	126	138.92	1,665.9		53.29
4	208	22.53	164.1		60.95
5	231	34.69	227.5		63.06
6	240	21.79	137.6		63.88
7	257	50.21	295.7		65.46
8	280	62.68	338.8		67.56
9	289	27.61	144.7		68.38
10	297	36.76	187.8		69.05
11	318	47.55	226.8		70.77
12	351	22.32	96.5		73.40
13	359	48.33	204.0		74.07
14	377	24.80	99.6		75.56
15	422	22.63	81.2		78.62
16	440	15.84	54.5		79.63
17	490	15.30	47.3		82.45
18	505	18.28	54.8		83.27
19	525	19.68	56.8		84.22
20	545	14.66	40.8		85.13
21	588	18.09	46.6		87.15
22	649	29.63	69.2		89.25
23	772	17.62	34.6		91.79
24	866	17.38	30.4		93.03
25	920	18.03	29.7		93.75

Assay Class: High Sensitivity DNA Assay  
 Data Path: C:\...ents and Settings\Bioanalyzer\2015-08-12\2015-08-12\_002.xad

Created: 8/12/2015 4:22:33 PM  
 Modified: 8/12/2015 5:06:56 PM

### Electropherogram Summary Continued ...

#### ... Peak table for sample 4 : 12: IgG Goat 2 lib (1:2)

Peak	Size [bp]	Conc. [pg/μl]	Molarity [pmol/l]	Observations	Aligned Migration Time [s]
26	1,075	32.82	46.3		95.28
27	1,626	18.92	17.6		98.73
28	1,939	14.98	11.7		100.69
29	2,045	20.00	14.8		101.22
30	2,946	31.98	16.4		104.14
31	10,380	75.00	10.9	Upper Marker	113.00
32	13,186	0.00	0.0		115.92

#### Region table for sample 4 : 12: IgG Goat 2 lib (1:2)

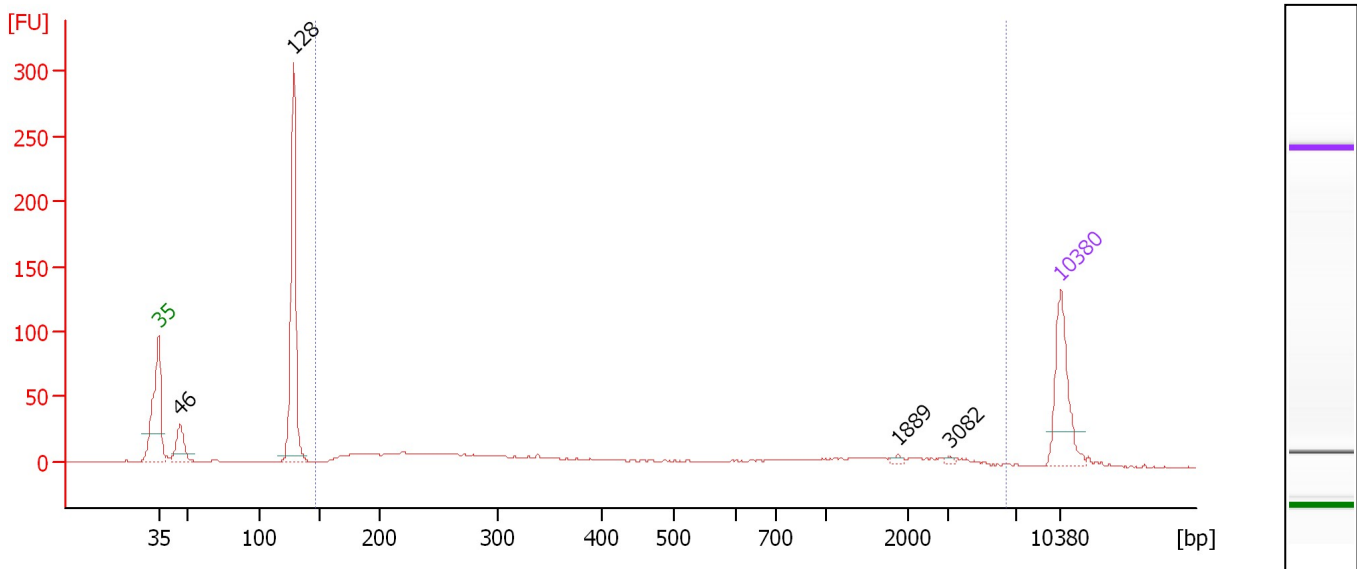
From [bp]	Average Size [bp]	To [bp]	Corr. Area	Molarity [pmol/l]	Co % of lor Total	Size distribution in CV [%]	Conc. [pg/μl]
160	954	6,539	1,270.4	4,230.1	90	100.0	1,194.08

Assay Class: High Sensitivity DNA Assay  
 Data Path: C:\...ents and Settings\Bioanalyzer\2015-08-12\2015-08-12\_002.xad

Created: 8/12/2015 4:22:33 PM  
 Modified: 8/12/2015 5:06:56 PM

**Electropherogram Summary Continued ...**

13: IgG Mouse 1 lib [ HiSeq\_176 ]



**Overall Results for sample 5 : 13: IgG Mouse 1 lib**

Number of peaks found: 4                      Corr. Area 1: 345.0  
 Noise: 0.2

**Peak table for sample 5 : 13: IgG Mouse 1 lib**

Peak	Size [bp]	Conc. [pg/μl]	Molarity [pmol/l]	Observations	Aligned Migration Time [s]
1	35	125.00	5,411.3	Lower Marker	43.00
2	46	53.32	1,765.7		44.64
3	128	292.39	3,459.4		53.45
4	1,889	3.35	2.7		100.38
5	3,082	2.62	1.3		104.42
6	10,380	75.00	10.9	Upper Marker	113.00

**Region table for sample 5 : 13: IgG Mouse 1 lib**

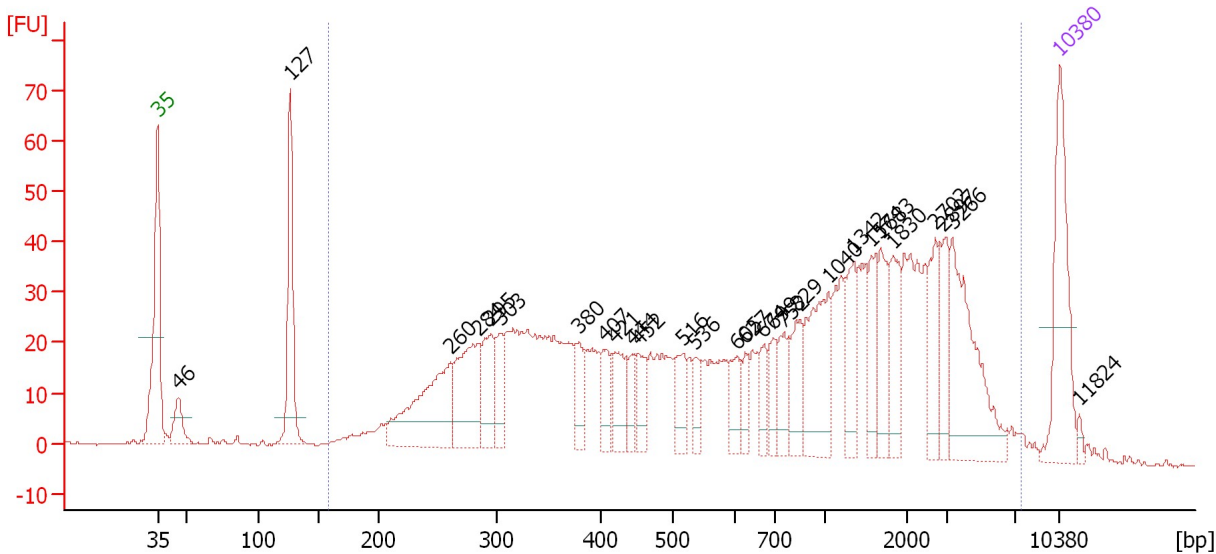
From [bp]	Average Size [bp]	To [bp]	Corr. Area	Molarity [pmol/l]	Co % of lor Total	Size distribution in CV [%]	Conc. [pg/μl]
146	937	6,414	345.0	1,290.2	49	100.0	272.13

Assay Class: High Sensitivity DNA Assay  
 Data Path: C:\...ents and Settings\Bioanalyzer\2015-08-12\2015-08-12\_002.xad

Created: 8/12/2015 4:22:33 PM  
 Modified: 8/12/2015 5:06:56 PM

**Electropherogram Summary Continued ...**

14: igG Mouse 2 lib (1:3) [ HiSeq\_176 ]



**Overall Results for sample 6 : 14: igG Mouse 2 lib (1:3)**

Number of peaks found: 28                      Corr. Area 1: 1,402.8  
 Noise: 0.2

**Peak table for sample 6 : 14: igG Mouse 2 lib (1:3)**

Peak	Size [bp]	Conc. [pg/μl]	Molarity [pmol/l]	Observations	Aligned Migration Time [s]
1	35	125.00	5,411.3	Lower Marker	43.00
2	46	30.66	1,020.9		44.60
3	127	117.77	1,408.5		53.33
4	260	124.39	724.1		65.74
5	284	91.67	489.7		67.87
6	295	50.80	261.1		68.89
7	303	30.48	152.4		69.61
8	380	25.29	101.0		75.72
9	407	29.30	109.1		77.76
10	421	36.05	129.8		78.53
11	444	19.79	67.6		79.84
12	452	24.28	81.3		80.33
13	516	30.13	88.5		83.77
14	536	19.08	53.9		84.74
15	605	22.37	56.0		87.89
16	627	16.69	40.3		88.57
17	674	20.97	47.2		90.02
18	699	22.65	49.1		90.80
19	752	27.34	55.1		91.52
20	829	36.21	66.2		92.54
21	1,040	74.22	108.1		95.06
22	1,342	40.94	46.2		96.95
23	1,574	31.71	30.5		98.41
24	1,683	33.36	30.0		99.09
25	1,830	35.69	29.6		100.01

Assay Class: High Sensitivity DNA Assay  
 Data Path: C:\...ents and Settings\Bioanalyzer\2015-08-12\2015-08-12\_002.xad

Created: 8/12/2015 4:22:33 PM  
 Modified: 8/12/2015 5:06:56 PM

### Electropherogram Summary Continued ...

#### ... Peak table for sample 6 : 14: igG Mouse 2 lib (1:3)

Peak	Size [bp]	Conc. [pg/μl]	Molarity [pmol/l]	Observations	Aligned Migration Time [s]
26	2,702	35.67	20.0		103.35
27	2,897	31.46	16.5		103.98
28	3,266	91.00	42.2		104.66
29	10,380	75.00	10.9	Upper Marker	113.00
30	11,824	0.00	0.0		114.50

#### Region table for sample 6 : 14: igG Mouse 2 lib (1:3)

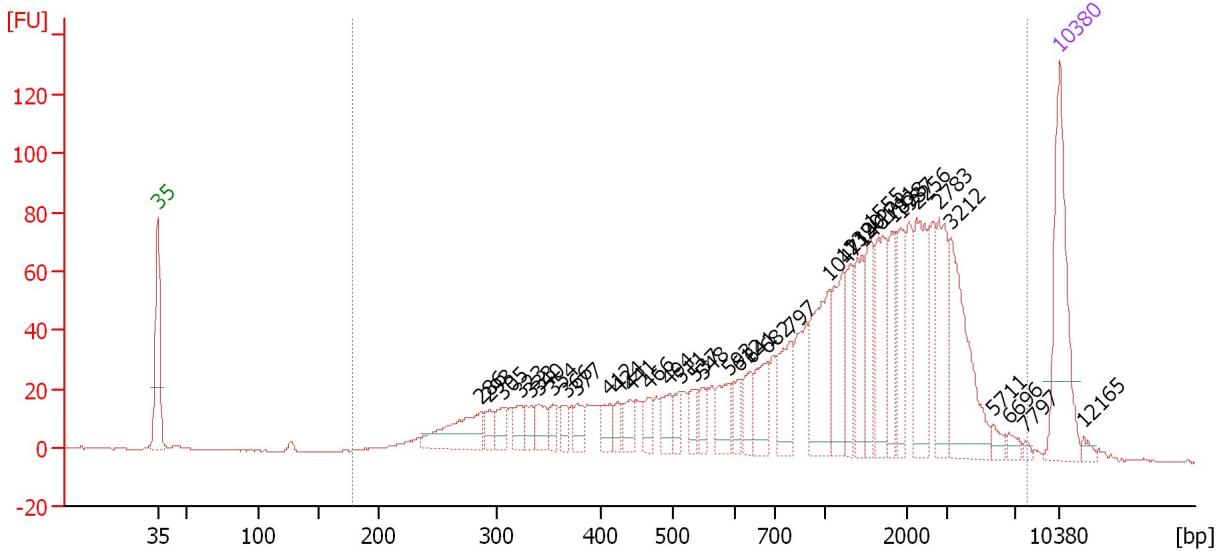
From [bp]	Average Size [bp]	To [bp]	Corr. Area	Molarity [pmol/l]	Co % of lor Total	Size distribution in CV [%]	Conc. [pg/μl]
159	1,288	7,510	1,402.8	5,261.2	93	99.0	1,683.42

Assay Class: High Sensitivity DNA Assay  
 Data Path: C:\...ents and Settings\Bioanalyzer\2015-08-12\2015-08-12\_002.xad

Created: 8/12/2015 4:22:33 PM  
 Modified: 8/12/2015 5:06:56 PM

**Electropherogram Summary Continued ...**

15: CoupTF::1 lib (1:41) [ HiSeq\_176 ]



**Overall Results for sample 7 : 15: CoupTF::1 lib (1:41)**

Number of peaks found: 37                      Corr. Area 1: 1,730.8  
 Noise: 0.2

**Peak table for sample 7 : 15: CoupTF::1 lib (1:41)**

Peak	Size [bp]	Conc. [pg/μl]	Molarity [pmol/l]	Observations	Aligned Migration Time [s]
1	35	125.00	5,411.3	Lower Marker	43.00
2	286	54.58	288.7		68.13
3	293	12.19	62.9		68.76
4	305	15.93	79.2		69.74
5	323	15.49	72.7		71.21
6	333	12.58	57.3		71.99
7	340	19.72	88.0		72.53
8	354	11.35	48.6		73.70
9	366	11.92	49.3		74.68
10	377	14.45	58.1		75.51
11	412	13.74	50.5		78.05
12	424	10.76	38.4		78.73
13	441	15.46	53.2		79.66
14	466	13.43	43.7		81.08
15	494	17.73	54.4		82.69
16	511	12.56	37.3		83.52
17	537	13.53	38.2		84.75
18	548	12.82	35.4		85.28
19	593	22.30	57.0		87.39
20	612	14.41	35.6		88.12
21	641	19.03	45.0		89.00
22	682	28.57	63.5		90.27
23	797	38.40	73.0		92.13
24	1,047	63.56	92.0		95.11
25	1,219	45.49	56.6		96.18

Assay Class: High Sensitivity DNA Assay  
 Data Path: C:\...ents and Settings\Bioanalyzer\2015-08-12\2015-08-12\_002.xad

Created: 8/12/2015 4:22:33 PM  
 Modified: 8/12/2015 5:06:56 PM

**Electropherogram Summary Continued ...**

**... Peak table for sample 7 : 15: CoupTF::1 lib (1:41)**

Peak	Size [bp]	Conc. [pg/μl]	Molarity [pmol/l]	Observations	Aligned Migration Time [s]
26	1,320	27.50	31.6		96.82
27	1,461	34.17	35.4		97.70
28	1,555	33.72	32.9		98.29
29	1,711	45.15	40.0		99.26
30	1,828	29.31	24.3		100.00
31	1,937	29.41	23.0		100.68
32	2,256	54.48	36.6		101.90
33	2,783	46.52	25.3		103.61
34	3,212	71.62	33.8		104.59
35	5,711	6.53	1.7		107.82
36	6,696	5.33	1.2		109.09
37	7,797	2.13	0.4		110.31
38	10,380	75.00	10.9	Upper Marker	113.00
39	12,165	0.00	0.0		114.86

**Region table for sample 7 : 15: CoupTF::1 lib (1:41)**

From [bp]	Average Size [bp]	To [bp]	Corr. Area	Molarity [pmol/l]	Co % of lor Total	Size distribution in CV [%]	Conc. [pg/μl]
177	1,549	8,002	1,730.8	2,749.9	98	81.3	1,201.87

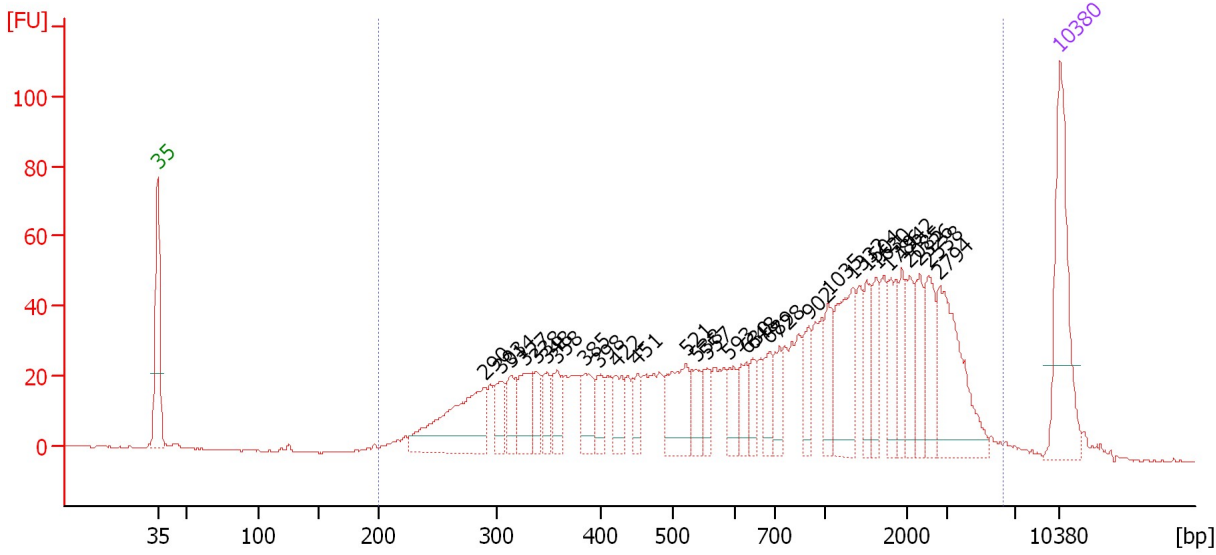


Assay Class: High Sensitivity DNA Assay  
 Data Path: C:\...ents and Settings\Bioanalyzer\2015-08-12\2015-08-12\_002.xad

Created: 8/12/2015 4:22:33 PM  
 Modified: 8/12/2015 5:06:56 PM

**Electropherogram Summary Continued ...**

16: CopuTF::2 lib (1:41) [ HiSeq\_176 ]



**Overall Results for sample 8 : 16: CopuTF::2 lib (1:41)**

Number of peaks found: 30                      Corr. Area 1: 1,496.0  
 Noise: 0.2

**Peak table for sample 8 : 16: CopuTF::2 lib (1:41)**

Peak	Size [bp]	Conc. [pg/μl]	Molarity [pmol/l]	Observations	Aligned Migration Time [s]
1	35	125.00	5,411.3	Lower Marker	43.00
2	290	108.70	568.9		68.41
3	303	22.32	111.7		69.58
4	314	24.67	119.1		70.46
5	327	39.21	181.9		71.49
6	338	20.23	90.8		72.37
7	348	21.10	91.9		73.20
8	358	25.12	106.4		73.99
9	385	28.79	113.4		76.14
10	398	21.00	79.9		77.22
11	422	23.02	82.7		78.59
12	451	16.37	55.0		80.25
13	521	51.81	150.6		84.02
14	538	21.23	59.8		84.80
15	557	15.95	43.4		85.69
16	593	20.02	51.2		87.40
17	630	21.74	52.3		88.67
18	648	16.69	39.1		89.21
19	689	19.09	42.0		90.48
20	728	22.40	46.6		91.22
21	902	21.24	35.7		93.52
22	1,035	24.83	36.3		95.03
23	1,332	60.59	68.9		96.90
24	1,504	23.13	23.3		97.97
25	1,630	24.73	23.0		98.76

Assay Class: High Sensitivity DNA Assay  
 Data Path: C:\...ents and Settings\Bioanalyzer\2015-08-12\2015-08-12\_002.xad

Created: 8/12/2015 4:22:33 PM  
 Modified: 8/12/2015 5:06:56 PM

### Electropherogram Summary Continued ...

#### ... Peak table for sample 8 : 16: CopuTF::2 lib (1:41)

Peak	Size [bp]	Conc. [pg/μl]	Molarity [pmol/l]	Observations	Aligned Migration Time [s]
26	1,786	27.72	23.5		99.73
27	1,942	22.26	17.4		100.71
28	2,085	23.42	17.0		101.35
29	2,326	23.08	15.0		102.13
30	2,538	28.99	17.3		102.82
31	2,794	73.89	40.1		103.65
32	10,380	75.00	10.9	Upper Marker	113.00

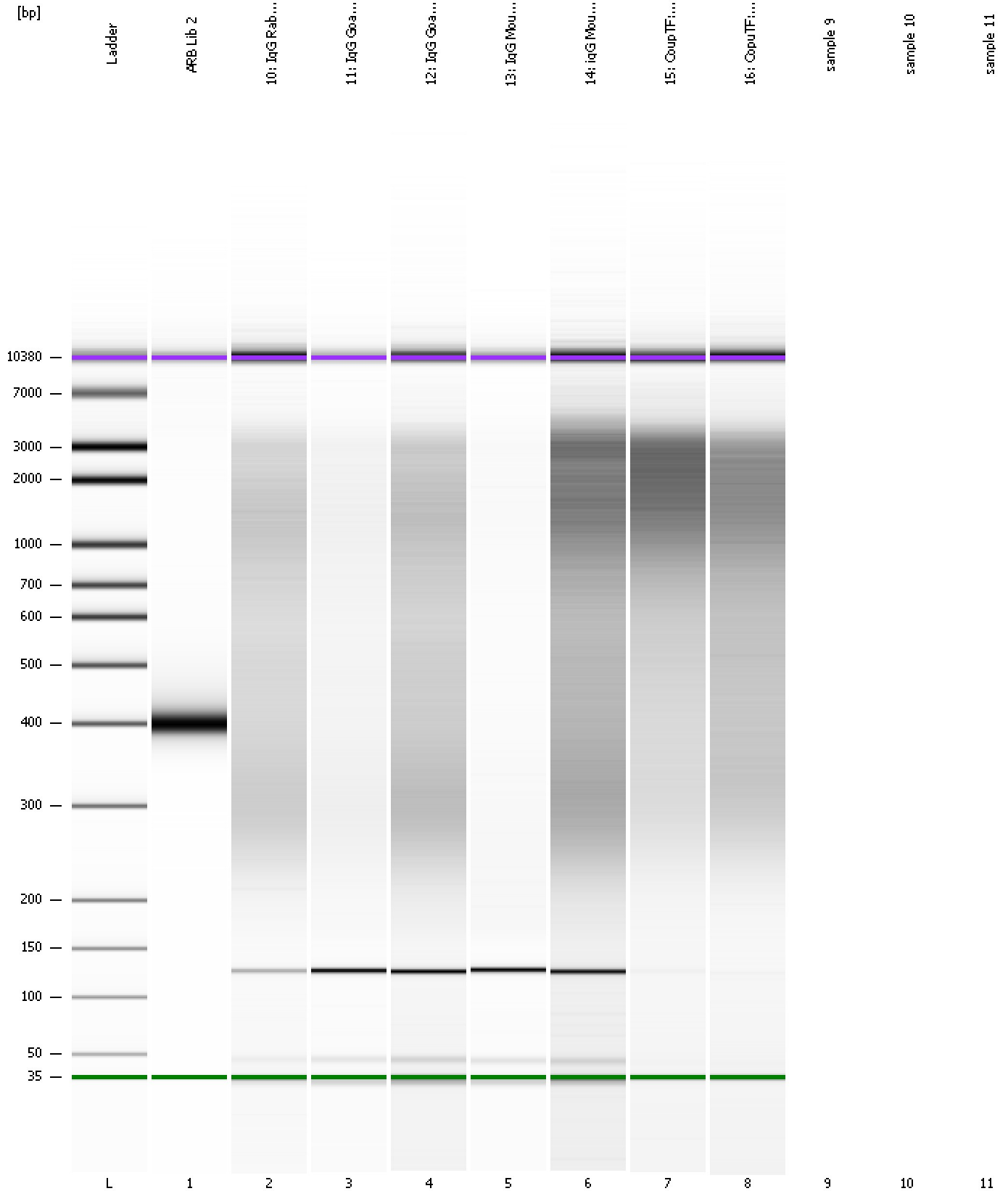
#### Region table for sample 8 : 16: CopuTF::2 lib (1:41)

From [bp]	Average Size [bp]	To [bp]	Corr. Area	Molarity [pmol/l]	Co % of lor Total	Size distribution in CV [%]	Conc. [pg/μl]
200	1,223	6,270	1,496.0	3,382.2	98	85.0	1,231.25

Assay Class: High Sensitivity DNA Assay  
Data Path: C:\...ents and Settings\Bioanalyzer\2015-08-12\2015-08-12\_002.xad

Created: 8/12/2015 4:22:33 PM  
Modified: 8/12/2015 5:06:56 PM

**Gel Image**



Assay Class: High Sensitivity DNA Assay  
Data Path: C:\...ents and Settings\Bioanalyzer\2015-08-12\2015-08-12\_002.xad

Created: 8/12/2015 4:22:33 PM  
Modified: 8/12/2015 5:06:56 PM

**Invalid Samples**

Sample 9 has not been run, no results available.

Sample 10 has not been run, no results available.

Sample 11 has not been run, no results available.