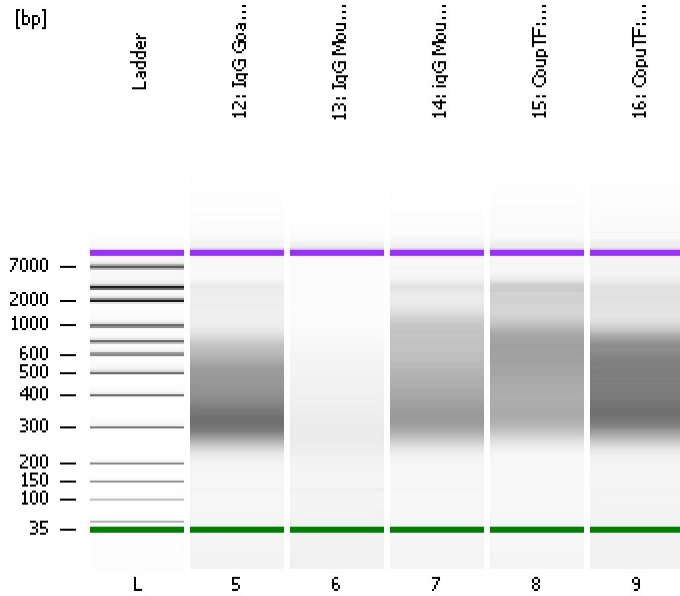


Assay Class: High Sensitivity DNA Assay
Data Path: C:\...zer\2015-08-13\2015-08-13_002_HiSeq176_SizeSelLibs_2of2.xad

Created: 8/13/2015 11:27:46 AM
Modified: 8/13/2015 12:14:36 PM

Electrophoresis File Run Summary



Instrument Information:

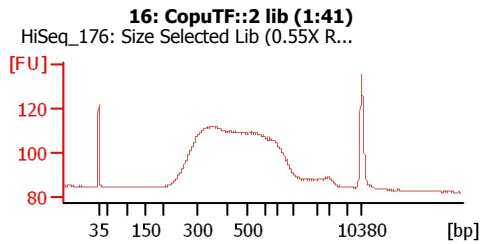
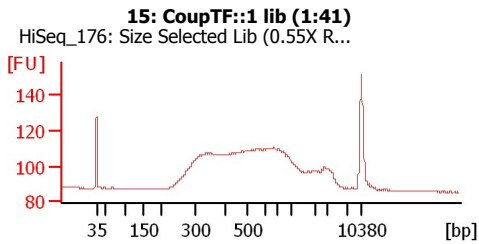
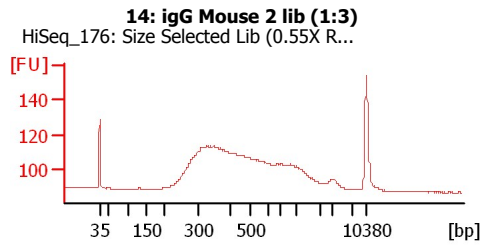
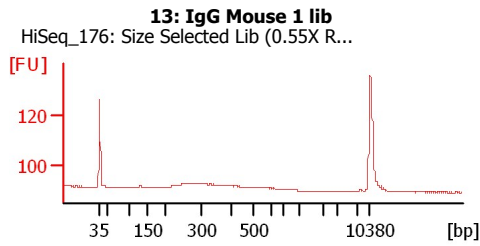
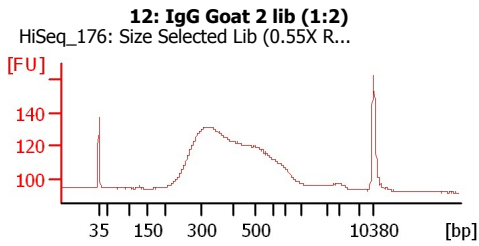
Instrument Name: DE13701086 Firmware: C.01.069
Serial#: DE13701086 Type: G2938B

Assay Information:

Assay Origin Path: C:\Program Files\Agilent\2100 bioanalyzer\2100 expert\assays\dsDNA\High Sensitivity DNA.xsy
Assay Class: High Sensitivity DNA Assay
Version: 1.03
Assay Comments: Copyright © 2003-2010 Agilent Technologies

Chip Information:

Chip Lot #:
Reagent Kit Lot #:
Chip Comments:



Assay Class: High Sensitivity DNA Assay
Data Path: C:\...zer\2015-08-13\2015-08-13_002_HiSeq176_SizeSelLibs_2of2.xad

Created: 8/13/2015 11:27:46 AM
Modified: 8/13/2015 12:14:36 PM

Electrophoresis File Run Summary (Chip Summary)

Sample Name	Sample Comment	Rest. Digest	Status	Observation	Result Label	Result Color
12: IgG Goat 2 lib (1:2)	HiSeq_176: Size Selected Lib (0.55X Right/0.8X Left)	<input type="checkbox"/>	✓			
13: IgG Mouse 1 lib	HiSeq_176: Size Selected Lib (0.55X Right/0.8X Left)	<input type="checkbox"/>	✓			
14: igG Mouse 2 lib (1:3)	HiSeq_176: Size Selected Lib (0.55X Right/0.8X Left)	<input type="checkbox"/>	✓			
15: CoupTF::1 lib (1:41)	HiSeq_176: Size Selected Lib (0.55X Right/0.8X Left)	<input type="checkbox"/>	✓			
16: CopuTF::2 lib (1:41)	HiSeq_176: Size Selected Lib (0.55X Right/0.8X Left)	<input type="checkbox"/>	✓			
Ladder		<input type="checkbox"/>	✓			
Chip Lot #				Reagent Kit Lot #		

Chip Comments :

Assay Class: High Sensitivity DNA Assay
 Data Path: C:\...zer\2015-08-13\2015-08-13_002_HiSeq176_SizeSelLibs_2of2.xad

Created: 8/13/2015 11:27:46 AM
 Modified: 8/13/2015 12:14:36 PM

Electrophoresis Assay Details

General Analysis Settings

Number of Available Sample and Ladder Wells (Max.) : 12
 Minimum Visible Range [s] : 32
 Maximum Visible Range [s] : 138
 Start Analysis Time Range [s] : 33
 End Analysis Time Range [s] : 137.5
 Ladder Concentration [pg/μl] : 1950
 Uses Standard Area for Ladder Fragments
 Lower Marker Concentration [pg/μl] : 125
 Upper Marker Concentration [pg/μl] : 75
 Used Upper Marker for Quantitation
 Standard Curve Fit is Point to Point
 Show Data Aligned to Lower and Upper Marker

Integrator Settings

Integration Start Time [s] : 33.05
 Integration End Time [s] : 137
 Slope Threshold : 0.8
 Height Threshold [FU] : 5
 Area Threshold : 0.1
 Width Threshold [s] : 0.6
 Baseline Plateau [s] : 0.5

Filter Settings

Filter Width [s] : 0.5
 Polynomial Order : 4

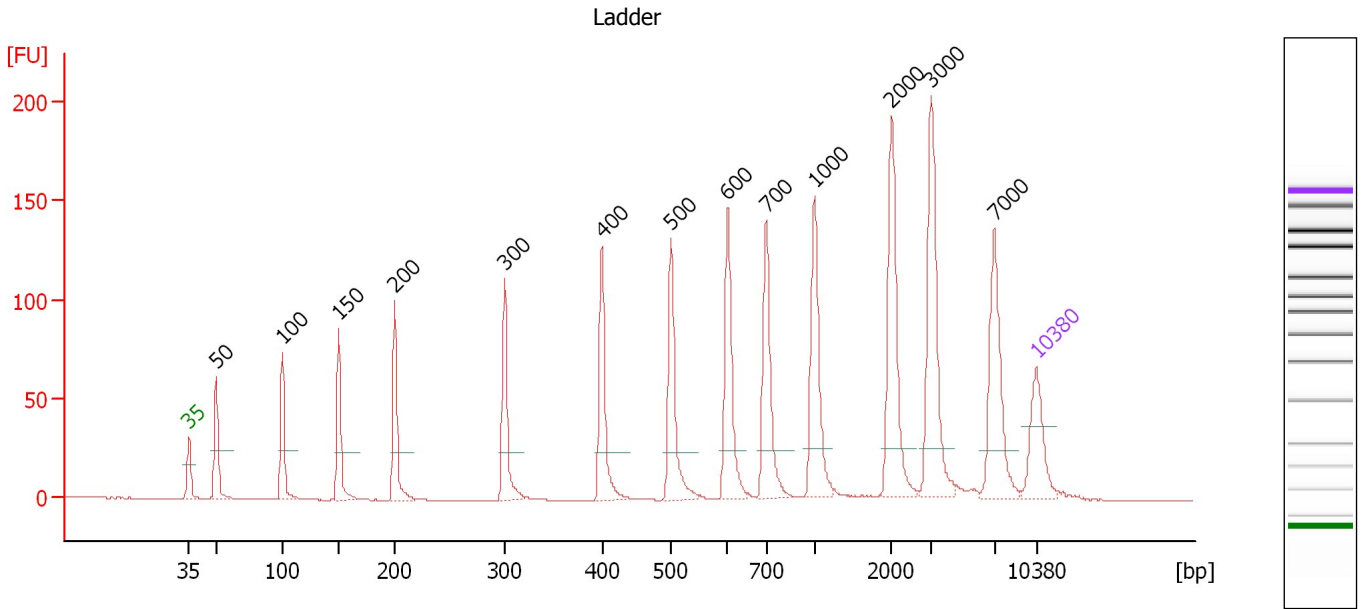
Ladder

Ladder Peak	Size	Area
1	35	160
2	50	210
3	100	208
4	150	221
5	200	242
6	300	270
7	400	305
8	500	306
9	600	336
10	700	321
11	1000	366
12	2000	413
13	3000	411
14	7000	400
15	10380	214

Assay Class: High Sensitivity DNA Assay
 Data Path: C:\...zer\2015-08-13\2015-08-13_002_HiSeq176_SizeSelLibs_2of2.xad

Created: 8/13/2015 11:27:46 AM
 Modified: 8/13/2015 12:14:36 PM

Electropherogram Summary



Overall Results for Ladder

Noise: 0.1

Peak table for Ladder

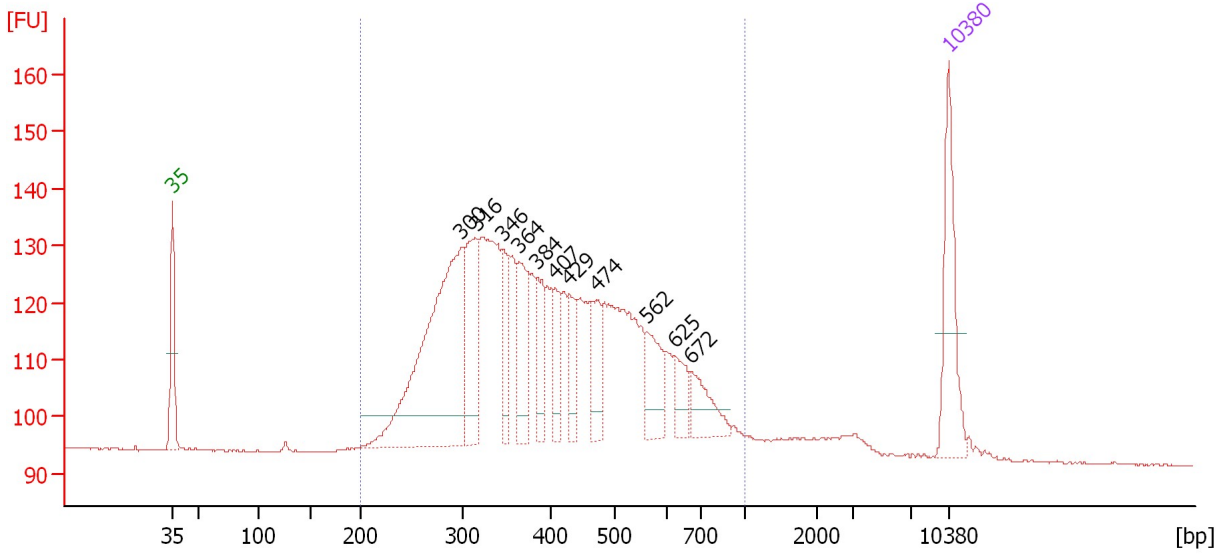
Peak	Size [bp]	Conc. [pg/μl]	Molarity [pmol/l]	Observations	Aligned Migration Time [s]
1	35	125.00	5,411.3	Lower Marker	43.00
2	50	150.00	4,545.5	Ladder Peak	45.25
3	100	150.00	2,272.7	Ladder Peak	50.71
4	150	150.00	1,515.2	Ladder Peak	55.38
5	200	150.00	1,136.4	Ladder Peak	60.00
6	300	150.00	757.6	Ladder Peak	69.08
7	400	150.00	568.2	Ladder Peak	77.10
8	500	150.00	454.5	Ladder Peak	82.82
9	600	150.00	378.8	Ladder Peak	87.49
10	700	150.00	324.7	Ladder Peak	90.67
11	1,000	150.00	227.3	Ladder Peak	94.67
12	2,000	150.00	113.6	Ladder Peak	101.06
13	3,000	150.00	75.8	Ladder Peak	104.32
14	7,000	150.00	32.5	Ladder Peak	109.52
15	10,380	75.00	10.9	Upper Marker	113.00

Assay Class: High Sensitivity DNA Assay
 Data Path: C:\...zer\2015-08-13\2015-08-13_002_HiSeq176_SizeSelLibs_2of2.xad

Created: 8/13/2015 11:27:46 AM
 Modified: 8/13/2015 12:14:36 PM

Electropherogram Summary Continued ...

12: IgG Goat 2 lib (1:2) [HiSeq_176: Size Selected Lib (0.55X Right/0.8X Left)]



Overall Results for sample 5 : 12: IgG Goat 2 lib (1:2)

Number of peaks found: 11 Corr. Area 1: 1,044.1
 Noise: 0.1

Peak table for sample 5 : 12: IgG Goat 2 lib (1:2)

Peak	Size [bp]	Conc. [pg/μl]	Molarity [pmol/l]	Observations	Aligned Migration Time [s]
1	35	125.00	5,411.3	Lower Marker	43.00
2	300	368.67	1,863.4		69.06
3	316	105.66	506.8		70.36
4	346	53.71	235.3		72.76
5	364	78.17	325.5		74.20
6	384	50.47	199.0		75.84
7	407	37.50	139.8		77.47
8	429	34.99	123.5		78.77
9	474	51.22	163.8		81.32
10	562	52.74	142.1		85.74
11	625	29.81	72.3		88.29
12	672	42.94	96.8		89.78
13	10,380	75.00	10.9	Upper Marker	113.00

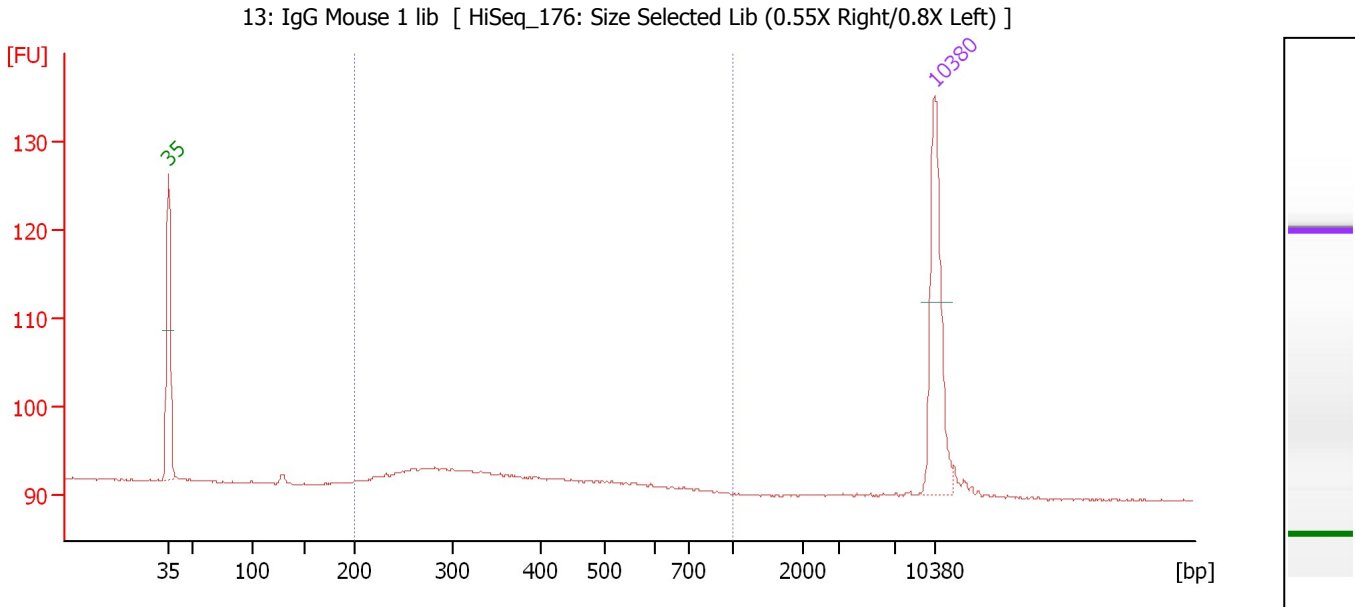
Region table for sample 5 : 12: IgG Goat 2 lib (1:2)

From [bp]	Average Size [bp]	To [bp]	Corr. Area	Molarity [pmol/l]	Co % of lor Total	Size distribution in CV [%]	Conc. [pg/μl]
200	421	1,000	1,044.1	7,067.8	94	33.0	1,717.45

Assay Class: High Sensitivity DNA Assay
 Data Path: C:\...zer\2015-08-13\2015-08-13_002_HiSeq176_SizeSelLibs_2of2.xad

Created: 8/13/2015 11:27:46 AM
 Modified: 8/13/2015 12:14:36 PM

Electropherogram Summary Continued ...



Overall Results for sample 6 : 13: IgG Mouse 1 lib

Number of peaks found: 0 Corr. Area 1: 44.7
 Noise: 0.1

Peak table for sample 6 : 13: IgG Mouse 1 lib

Peak	Size [bp]	Conc. [pg/μl]	Molarity [pmol/l]	Observations	Aligned Migration Time [s]
1	35	125.00	5,411.3	Lower Marker	43.00
2	10,380	75.00	10.9	Upper Marker	113.00

Region table for sample 6 : 13: IgG Mouse 1 lib

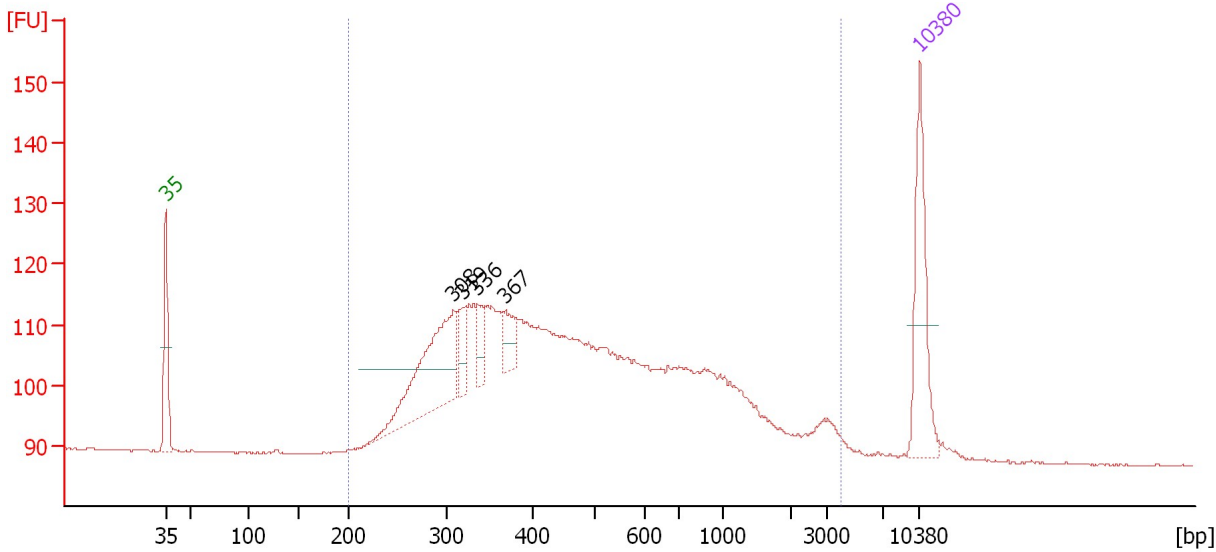
From [bp]	Average Size [bp]	To [bp]	Corr. Area	Molarity [pmol/l]	Co % of Ior Total	Size distribution in CV [%]	Conc. [pg/μl]
200	356	1,000	44.7	518.7	90	29.6	109.50

Assay Class: High Sensitivity DNA Assay
 Data Path: C:\...zer\2015-08-13\2015-08-13_002_HiSeq176_SizeSelLibs_2of2.xad

Created: 8/13/2015 11:27:46 AM
 Modified: 8/13/2015 12:14:36 PM

Electropherogram Summary Continued ...

14: igG Mouse 2 lib (1:3) [HiSeq_176: Size Selected Lib (0.55X Right/0.8X Left)]



Overall Results for sample 7 : 14: igG Mouse 2 lib (1:3)

Number of peaks found: 4 Corr. Area 1: 824.9
 Noise: 0.1

Peak table for sample 7 : 14: igG Mouse 2 lib (1:3)

Peak	Size [bp]	Conc. [pg/μl]	Molarity [pmol/l]	Observations	Aligned Migration Time [s]
1	35	125.00	5,411.3	Lower Marker	43.00
2	308	152.85	751.6		69.73
3	319	26.25	124.6		70.62
4	336	23.15	104.4		71.96
5	367	25.78	106.3		74.49
6	10,380	75.00	10.9	Upper Marker	113.00

Region table for sample 7 : 14: igG Mouse 2 lib (1:3)

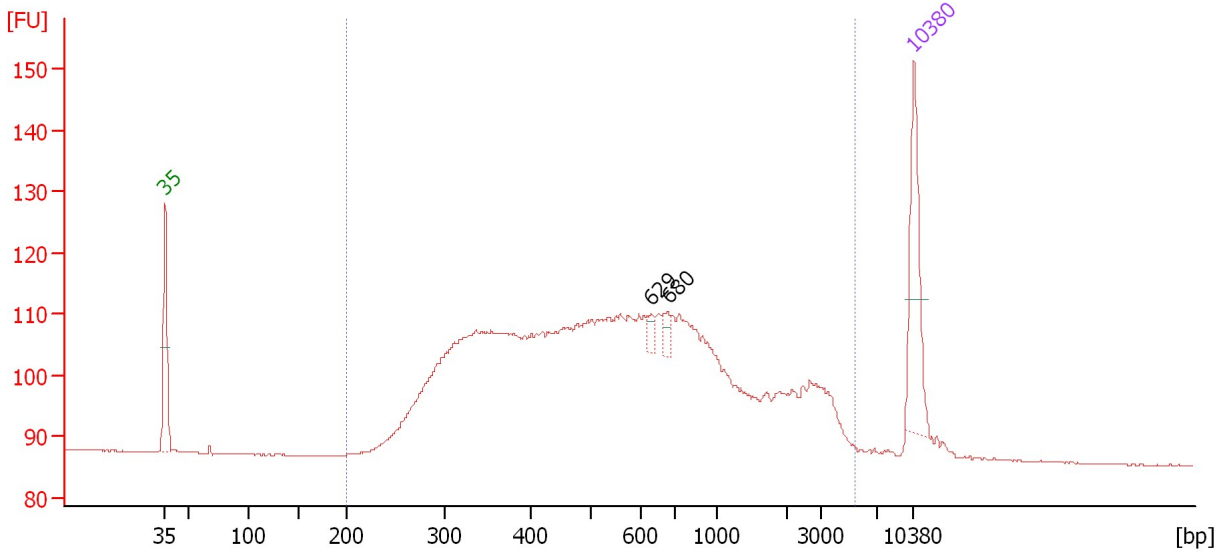
From [bp]	Average Size [bp]	To [bp]	Corr. Area	Molarity [pmol/l]	Co % of lor Total	Size distribution in CV [%]	Conc. [pg/μl]
200	625	4,035	824.9	5,019.9	98	86.7	1,365.55

Assay Class: High Sensitivity DNA Assay
 Data Path: C:\...zer\2015-08-13\2015-08-13_002_HiSeq176_SizeSelLibs_2of2.xad

Created: 8/13/2015 11:27:46 AM
 Modified: 8/13/2015 12:14:36 PM

Electropherogram Summary Continued ...

15: CoupTF::1 lib (1:41) [HiSeq_176: Size Selected Lib (0.55X Right/0.8X Left)]



Overall Results for sample 8 : 15: CoupTF::1 lib (1:41)

Number of peaks found: 2 Corr. Area 1: 878.4
 Noise: 0.1

Peak table for sample 8 : 15: CoupTF::1 lib (1:41)

Peak	Size [bp]	Conc. [pg/μl]	Molarity [pmol/l]	Observations	Aligned Migration Time [s]
1	35	125.00	5,411.3	Lower Marker	43.00
2	629	9.43	22.7		88.42
3	680	11.91	26.6		90.02
4	10,380	75.00	10.9	Upper Marker	113.00

Region table for sample 8 : 15: CoupTF::1 lib (1:41)

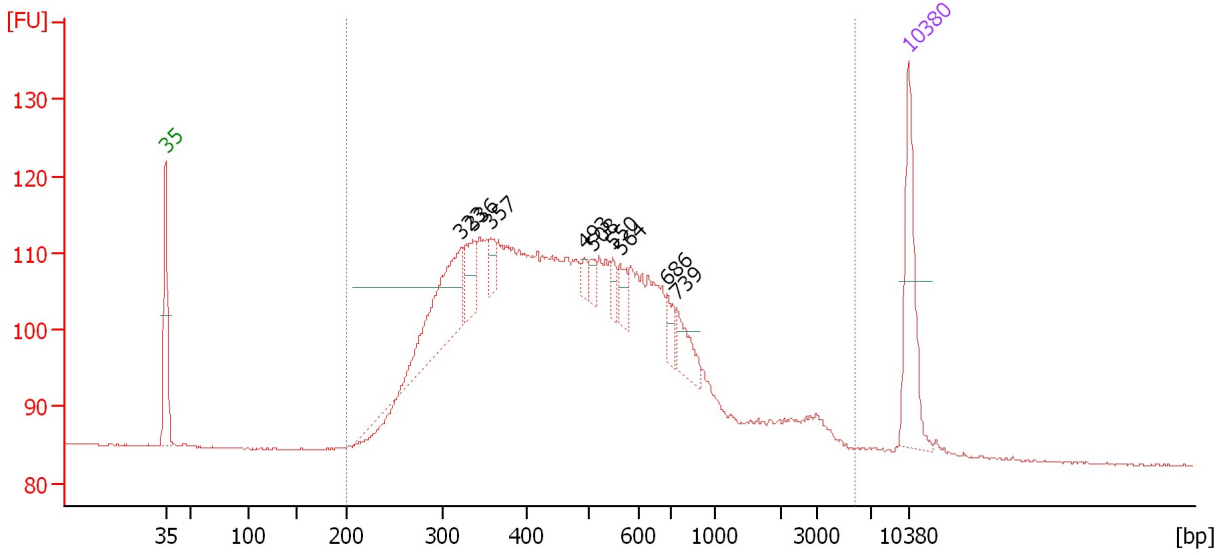
From [bp]	Average Size [bp]	To [bp]	Corr. Area	Molarity [pmol/l]	Co % of lor Total	Size distribution in CV [%]	Conc. [pg/μl]
200	816	5,388	878.4	5,382.1	98	96.2	1,681.71

Assay Class: High Sensitivity DNA Assay
 Data Path: C:\...zer\2015-08-13\2015-08-13_002_HiSeq176_SizeSelLibs_2of2.xad

Created: 8/13/2015 11:27:46 AM
 Modified: 8/13/2015 12:14:36 PM

Electropherogram Summary Continued ...

16: CopuTF::2 lib (1:41) [HiSeq_176: Size Selected Lib (0.55X Right/0.8X Left)]



Overall Results for sample 9 : 16: CopuTF::2 lib (1:41)

Number of peaks found: 9 Corr. Area 1: 933.4
 Noise: 0.1

Peak table for sample 9 : 16: CopuTF::2 lib (1:41)

Peak	Size [bp]	Conc. [pg/μl]	Molarity [pmol/l]	Observations	Aligned Migration Time [s]
1	35	125.00	5,411.3	Lower Marker	43.00
2	323	139.04	653.1		70.89
3	336	38.26	172.7		71.94
4	357	17.30	73.4		73.65
5	493	8.64	26.5		82.45
6	508	10.91	32.5		83.20
7	550	13.51	37.2		85.16
8	564	18.34	49.3		85.81
9	686	17.62	38.9		90.24
10	739	29.98	61.4		91.19
11	10,380	75.00	10.9	Upper Marker	113.00

Region table for sample 9 : 16: CopuTF::2 lib (1:41)

From [bp]	Average Size [bp]	To [bp]	Corr. Area	Molarity [pmol/l]	Co % of lor Total	Size distribution in CV [%]	Conc. [pg/μl]
200	611	5,741	933.4	7,595.2	99	95.8	2,104.73

Assay Class: High Sensitivity DNA Assay
Data Path: C:\...zer\2015-08-13\2015-08-13_002_HiSeq176_SizeSelLibs_2of2.xad

Created: 8/13/2015 11:27:46 AM
Modified: 8/13/2015 12:14:36 PM

Gel Image

