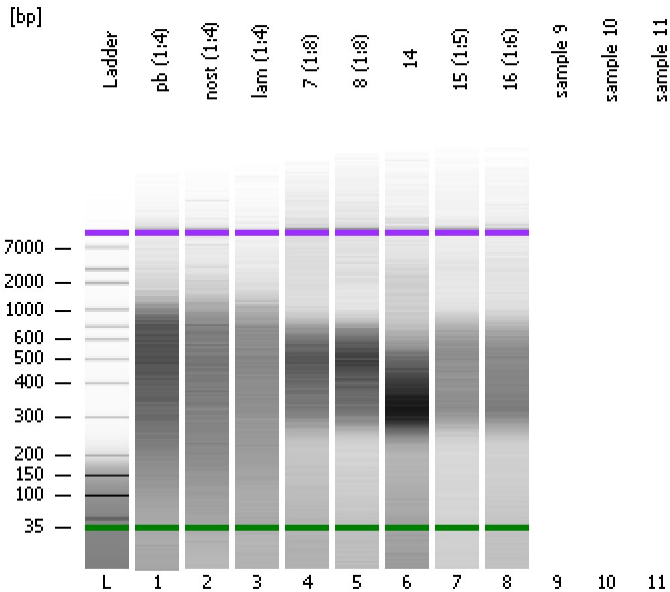


Assay Class: High Sensitivity DNA Assay
Data Path: C:\...ents and Settings\Bioanalyzer\2015-08-13\2015-08-13_003.xad

Created: 8/13/2015 1:19:48 PM
Modified: 8/13/2015 1:58:44 PM

Electrophoresis File Run Summary



Instrument Information:

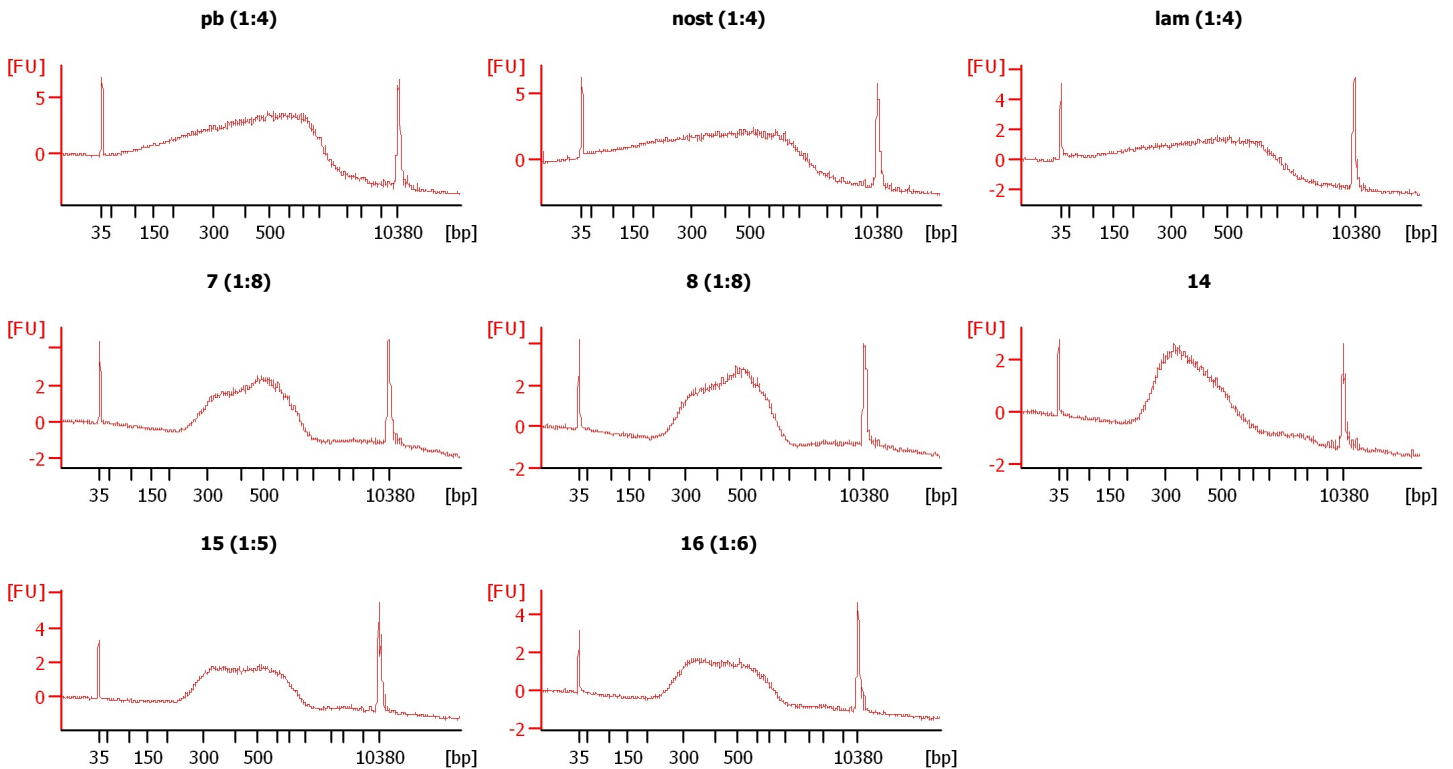
Instrument Name: DE13701086 Firmware: C.01.069
Serial#: DE13701086 Type: G2938B

Assay Information:

Assay Origin Path: C:\Program Files\Agilent\2100 bioanalyzer\2100 expert\assays\dsDNA\High Sensitivity DNA.xsy
Assay Class: High Sensitivity DNA Assay
Version: 1.03
Assay Comments: Copyright © 2003-2010 Agilent Technologies

Chip Information:

Chip Lot #: Reagent Kit Lot #: Chip Comments:



Assay Class: High Sensitivity DNA Assay
 Data Path: C:\...ents and Settings\Bioanalyzer\2015-08-13\2015-08-13_003.xad

Created: 8/13/2015 1:19:48 PM
 Modified: 8/13/2015 1:58:44 PM

Electrophoresis File Run Summary (Chip Summary)

Sample Name	Sample Comment	Rest. Digest	Status	Observation	Result Label	Result Color
pb (1:4)		<input type="checkbox"/>	✓			
nost (1:4)		<input type="checkbox"/>	✓			
lam (1:4)		<input type="checkbox"/>	✓			
7 (1:8)		<input type="checkbox"/>	✓			
8 (1:8)		<input type="checkbox"/>	✓			
14		<input type="checkbox"/>	✓			
15 (1:5)		<input type="checkbox"/>	✓			
16 (1:6)		<input type="checkbox"/>	✓			
sample 9		<input type="checkbox"/>				
sample 10		<input type="checkbox"/>				
sample 11		<input type="checkbox"/>				
Ladder		<input type="checkbox"/>	✓			

Chip Lot #

Reagent Kit Lot #

Chip Comments :

Assay Class: High Sensitivity DNA Assay
Data Path: C:\...ents and Settings\Bioanalyzer\2015-08-13\2015-08-13_003.xad

Created: 8/13/2015 1:19:48 PM
Modified: 8/13/2015 1:58:44 PM

Electrophoresis Assay Details

General Analysis Settings

Number of Available Sample and Ladder Wells (Max.) : 12
Minimum Visible Range [s] : 32
Maximum Visible Range [s] : 138
Start Analysis Time Range [s] : 33
End Analysis Time Range [s] : 137.5
Ladder Concentration [pg/μl] : 1950
Uses Standard Area for Ladder Fragments
Lower Marker Concentration [pg/μl] : 125
Upper Marker Concentration [pg/μl] : 75
Used Upper Marker for Quantitation
Standard Curve Fit is Point to Point
Show Data Aligned to Lower and Upper Marker

Integrator Settings

Integration Start Time [s] : 33.05
Integration End Time [s] : 137
Slope Threshold : 0.8
Height Threshold [FU] : 5
Area Threshold : 0.1
Width Threshold [s] : 0.6
Baseline Plateau [s] : 0.5

Filter Settings

Filter Width [s] : 0.5
Polynomial Order : 4

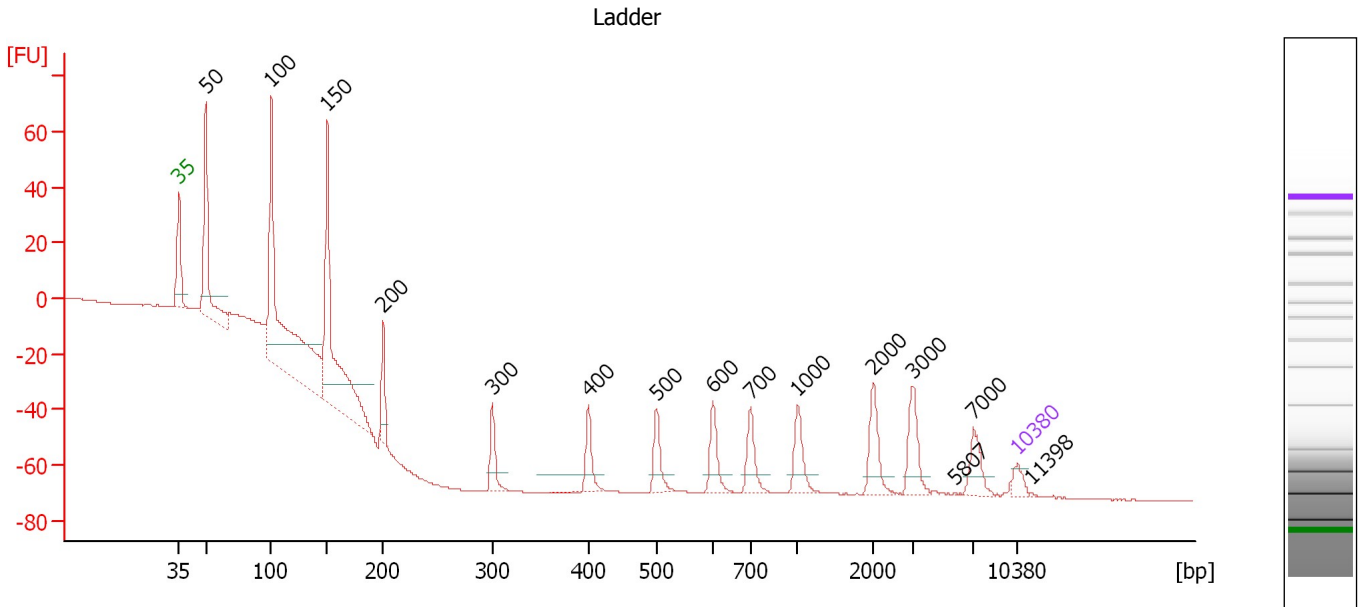
Ladder

Ladder Peak	Size	Area
1	35	160
2	50	210
3	100	208
4	150	221
5	200	242
6	300	270
7	400	305
8	500	306
9	600	336
10	700	321
11	1000	366
12	2000	413
13	3000	411
14	7000	400
15	10380	214

Assay Class: High Sensitivity DNA Assay
 Data Path: C:\...ents and Settings\Bioanalyzer\2015-08-13\2015-08-13_003.xad

Created: 8/13/2015 1:19:48 PM
 Modified: 8/13/2015 1:58:44 PM

Electropherogram Summary



Overall Results for Ladder

Noise: 0.1

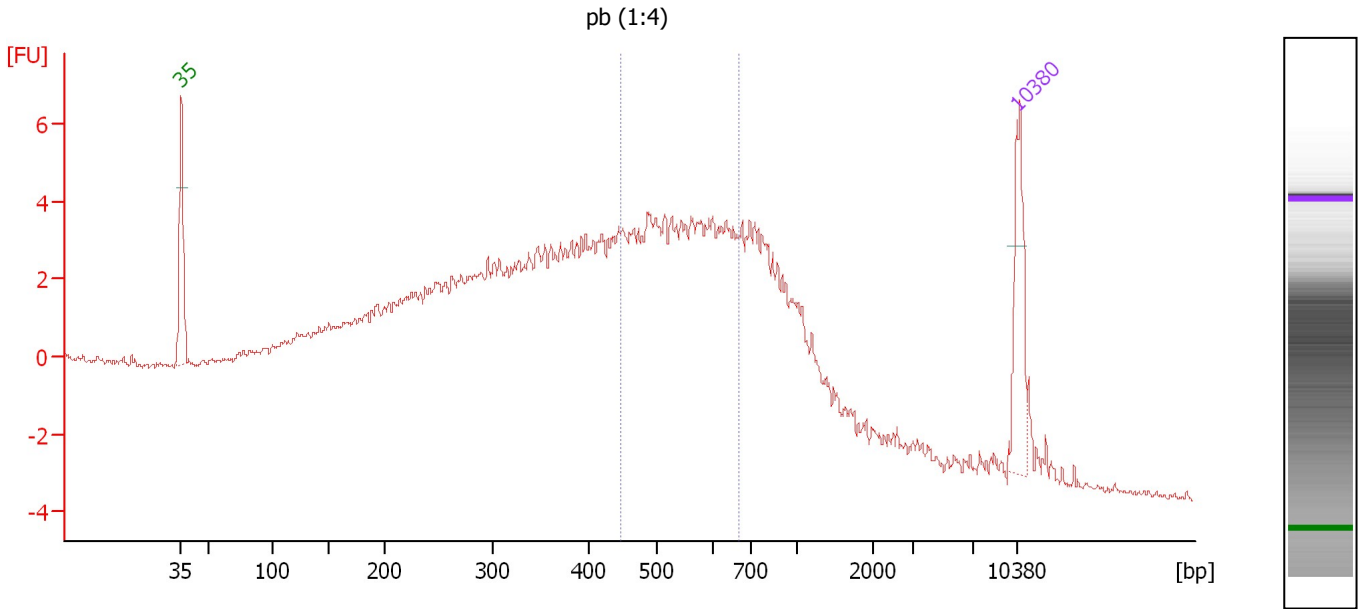
Peak table for Ladder

Peak	Size [bp]	Conc. [pg/μl]	Molarity [pmol/l]	Observations	Aligned Migration Time [s]
1	35	125.00	5,411.3	Lower Marker	43.00
2	50	150.00	4,545.5	Ladder Peak	45.23
3	100	150.00	2,272.7	Ladder Peak	50.70
4	150	150.00	1,515.2	Ladder Peak	55.37
5	200	150.00	1,136.4	Ladder Peak	60.04
6	300	150.00	757.6	Ladder Peak	69.17
7	400	150.00	568.2	Ladder Peak	77.18
8	500	150.00	454.5	Ladder Peak	82.83
9	600	150.00	378.8	Ladder Peak	87.55
10	700	150.00	324.7	Ladder Peak	90.71
11	1,000	150.00	227.3	Ladder Peak	94.62
12	2,000	150.00	113.6	Ladder Peak	100.98
13	3,000	150.00	75.8	Ladder Peak	104.23
14	5,807	0.00	0.0		107.79
15	7,000	150.00	32.5	Ladder Peak	109.31
16	10,380	75.00	10.9	Upper Marker	113.00
17	11,398	0.00	0.0		114.11

Assay Class: High Sensitivity DNA Assay
 Data Path: C:\...ents and Settings\Bioanalyzer\2015-08-13\2015-08-13_003.xad

Created: 8/13/2015 1:19:48 PM
 Modified: 8/13/2015 1:58:44 PM

Electropherogram Summary Continued ...



Overall Results for sample 1 : pb (1:4)

Number of peaks found: 0 Corr. Area 1: 64.8
 Noise: 0.1

Peak table for sample 1 : pb (1:4)

Peak	Size [bp]	Conc. [pg/μl]	Molarity [pmol/l]	Observations	Aligned Migration Time [s]
1	35	125.00	5,411.3	Lower Marker	43.00
2	10,380	75.00	10.9	Upper Marker	113.00

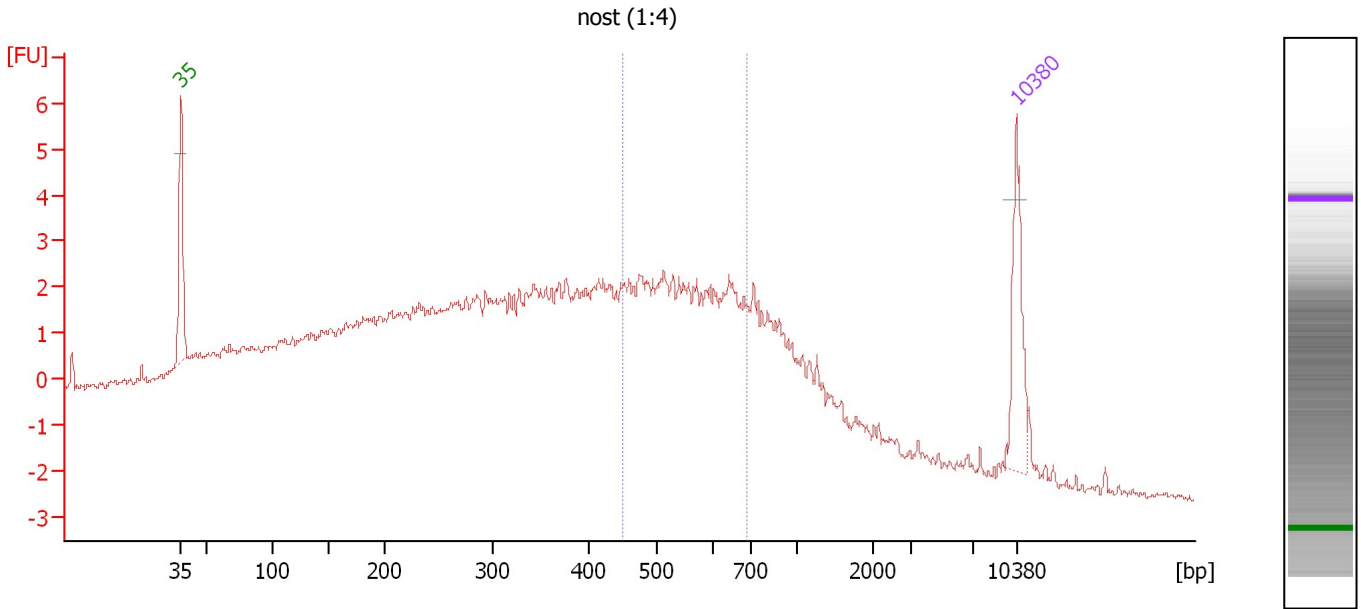
Region table for sample 1 : pb (1:4)

From [bp]	Average Size [bp]	To [bp]	Corr. Area	Molarity [pmol/l]	Co % of Ior Total	Size distribution in CV [%]	Conc. [pg/μl]
447	545	667	64.8	2,359.1	25	11.3	834.24

Assay Class: High Sensitivity DNA Assay
 Data Path: C:\...ents and Settings\Bioanalyzer\2015-08-13\2015-08-13_003.xad

Created: 8/13/2015 1:19:48 PM
 Modified: 8/13/2015 1:58:44 PM

Electropherogram Summary Continued ...



Overall Results for sample 2 : nost (1:4)

Number of peaks found: 0 Corr. Area 1: 43.9
 Noise: 0.1

Peak table for sample 2 : nost (1:4)

Peak	Size [bp]	Conc. [pg/μl]	Molarity [pmol/l]	Observations	Aligned Migration Time [s]
1	35	125.00	5,411.3	Lower Marker	43.00
2	10,380	75.00	10.9	Upper Marker	113.00

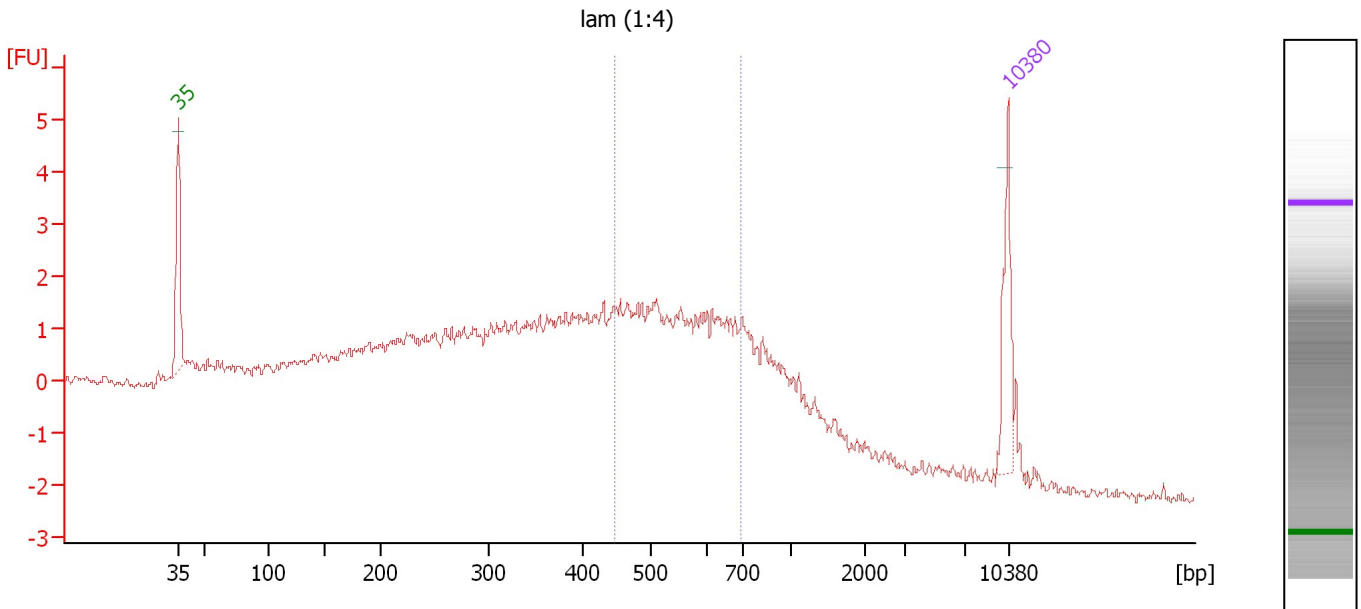
Region table for sample 2 : nost (1:4)

From [bp]	Average Size [bp]	To [bp]	Corr. Area	Molarity [pmol/l]	Co % of Ior Total	Size distribution in CV [%]	Conc. [pg/μl]
450	555	690	43.9	1,988.2	21	12.2	713.66

Assay Class: High Sensitivity DNA Assay
 Data Path: C:\...ents and Settings\Bioanalyzer\2015-08-13\2015-08-13_003.xad

Created: 8/13/2015 1:19:48 PM
 Modified: 8/13/2015 1:58:44 PM

Electropherogram Summary Continued ...



Setpoint Deviations for sample 3 : lam (1:4)

Height Threshold [FU] : 4

Overall Results for sample 3 : lam (1:4)

Number of peaks found: 0 Corr. Area 1: 32.4
 Noise: 0.1

Peak table for sample 3 : lam (1:4)

Pea	Size [bp]	Conc. [pg/μl]	Molarity [pmol/l]	Observations	Aligned Migration Time [s]
1	35	125.00	5,411.3	Lower Marker	43.00
2	10,380	75.00	10.9	Upper Marker	113.00

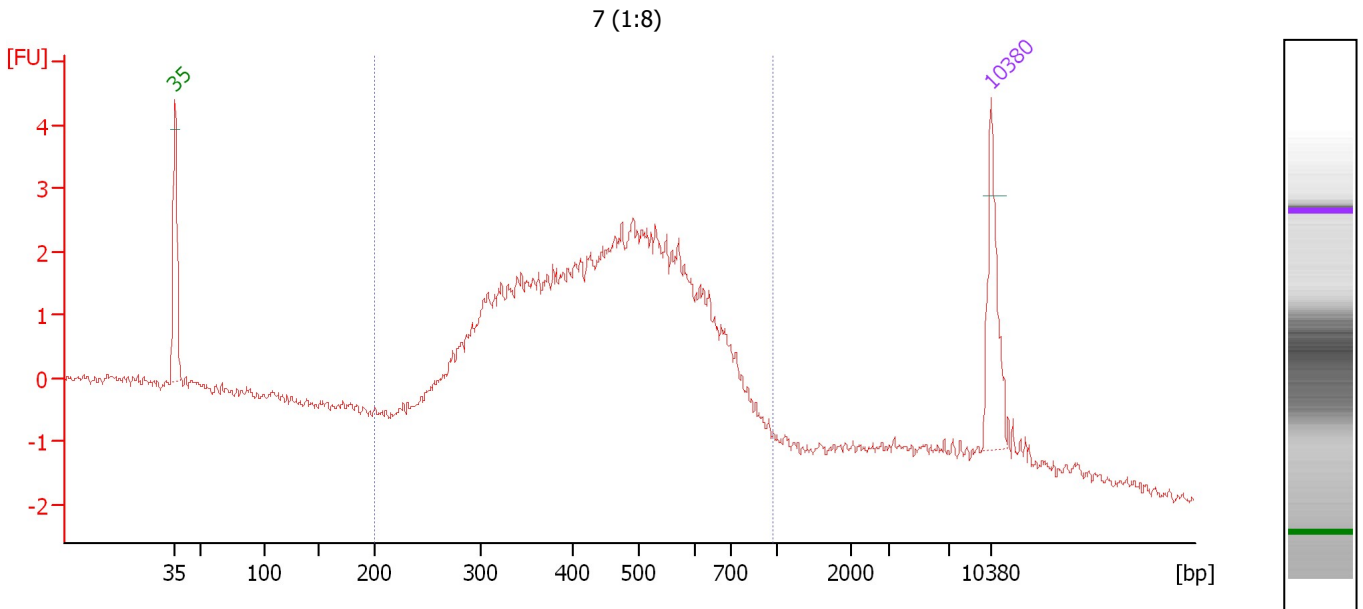
Region table for sample 3 : lam (1:4)

From [bp]	Average Size [bp]	To [bp]	Corr. Area	Molarity [pmol/l]	Co % of lor Total	Size distribution in CV [%]	Conc. [pg/μl]
446	552	691	32.4	2,090.2	25	12.5	746.01

Assay Class: High Sensitivity DNA Assay
 Data Path: C:\...ents and Settings\Bioanalyzer\2015-08-13\2015-08-13_003.xad

Created: 8/13/2015 1:19:48 PM
 Modified: 8/13/2015 1:58:44 PM

Electropherogram Summary Continued ...



Setpoint Deviations for sample 4 : 7 (1:8)

Height Threshold [FU] : 4

Overall Results for sample 4 : 7 (1:8)

Number of peaks found: 0 Corr. Area 1: 84.2
 Noise: 0.1

Peak table for sample 4 : 7 (1:8)

Pea	Size [bp]	Conc. [pg/μl]	Molarity [pmol/l]	Observations	Aligned Migration Time [s]
1	35	125.00	5,411.3	Lower Marker	43.00
2	10,380	75.00	10.9	Upper Marker	113.00

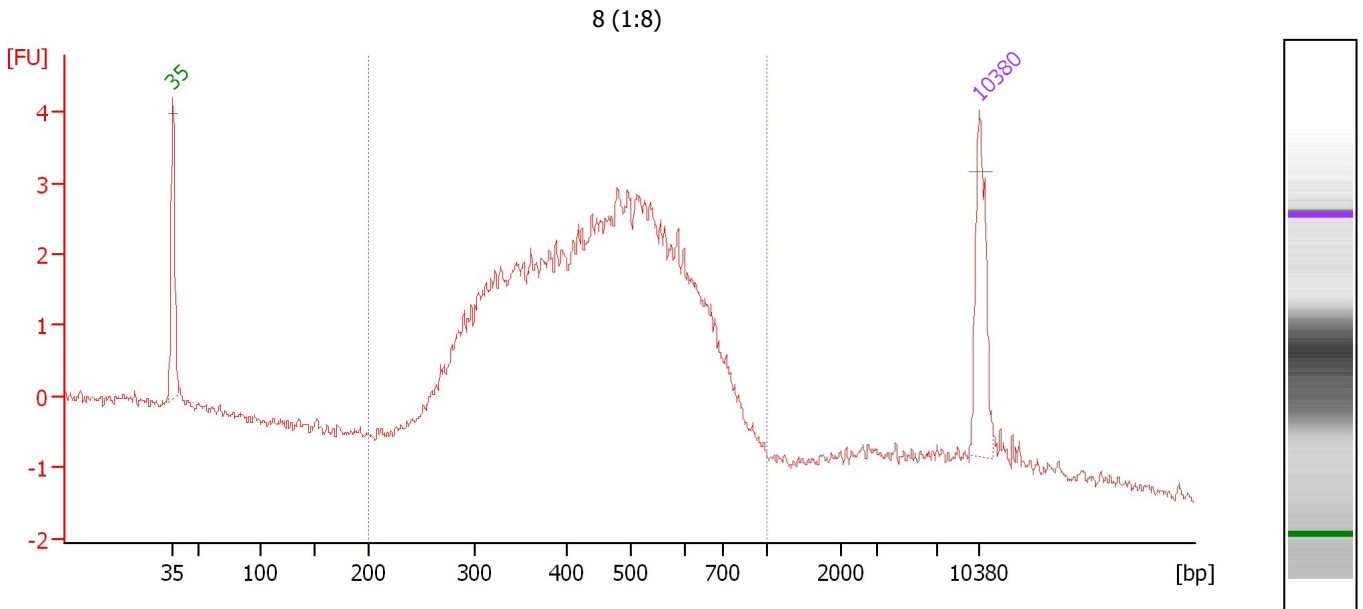
Region table for sample 4 : 7 (1:8)

From [bp]	Average Size [bp]	To [bp]	Corr. Area	Molarity [pmol/l]	Co % of lor Total	Size distribution in CV [%]	Conc. [pg/μl]
200	468	971	84.2	7,038.8	88	28.4	1,939.09

Assay Class: High Sensitivity DNA Assay
 Data Path: C:\...ents and Settings\Bioanalyzer\2015-08-13\2015-08-13_003.xad

Created: 8/13/2015 1:19:48 PM
 Modified: 8/13/2015 1:58:44 PM

Electropherogram Summary Continued ...



Setpoint Deviations for sample 5 : 8 (1:8)

Height Threshold [FU] : 4

Overall Results for sample 5 : 8 (1:8)

Number of peaks found: 0 Corr. Area 1: 83.9
 Noise: 0.1

Peak table for sample 5 : 8 (1:8)

Pea	Size [bp]	Conc. [pg/μl]	Molarity [pmol/l]	Observations	Aligned Migration Time [s]
1	35	125.00	5,411.3	Lower Marker	43.00
2	10,380	75.00	10.9	Upper Marker	113.00

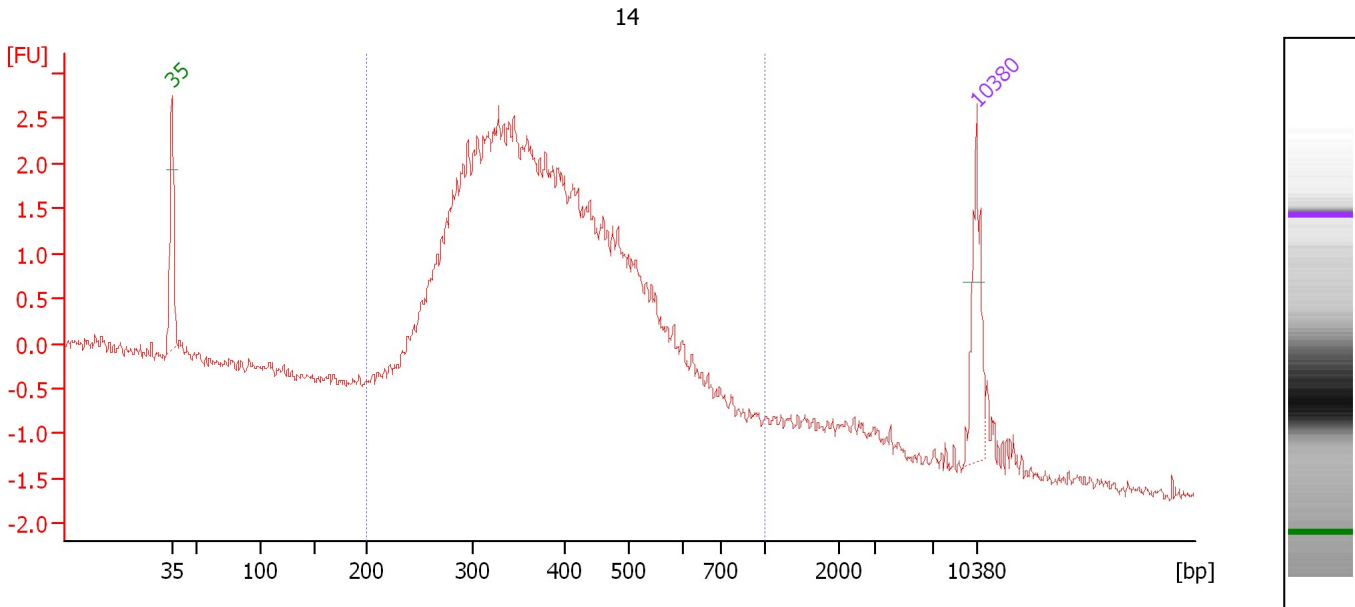
Region table for sample 5 : 8 (1:8)

From [bp]	Average Size [bp]	To [bp]	Corr. Area	Molarity [pmol/l]	Co % of lor Total	Size distribution in CV [%]	Conc. [pg/μl]
200	466	1,000	83.9	7,042.9	94	27.2	1,948.88

Assay Class: High Sensitivity DNA Assay
 Data Path: C:\...ents and Settings\Bioanalyzer\2015-08-13\2015-08-13_003.xad

Created: 8/13/2015 1:19:48 PM
 Modified: 8/13/2015 1:58:44 PM

Electropherogram Summary Continued ...



Setpoint Deviations for sample 6 : 14

Height Threshold [FU] : 2

Overall Results for sample 6 : 14

Number of peaks found: 0 Corr. Area 1: 73.8
 Noise: 0.1

Peak table for sample 6 : 14

Peak	Size [bp]	Conc. [pg/μl]	Molarity [pmol/l]	Observations	Aligned Migration Time [s]
1	35	125.00	5,411.3	Lower Marker	43.00
2	10,380	75.00	10.9	Upper Marker	113.00

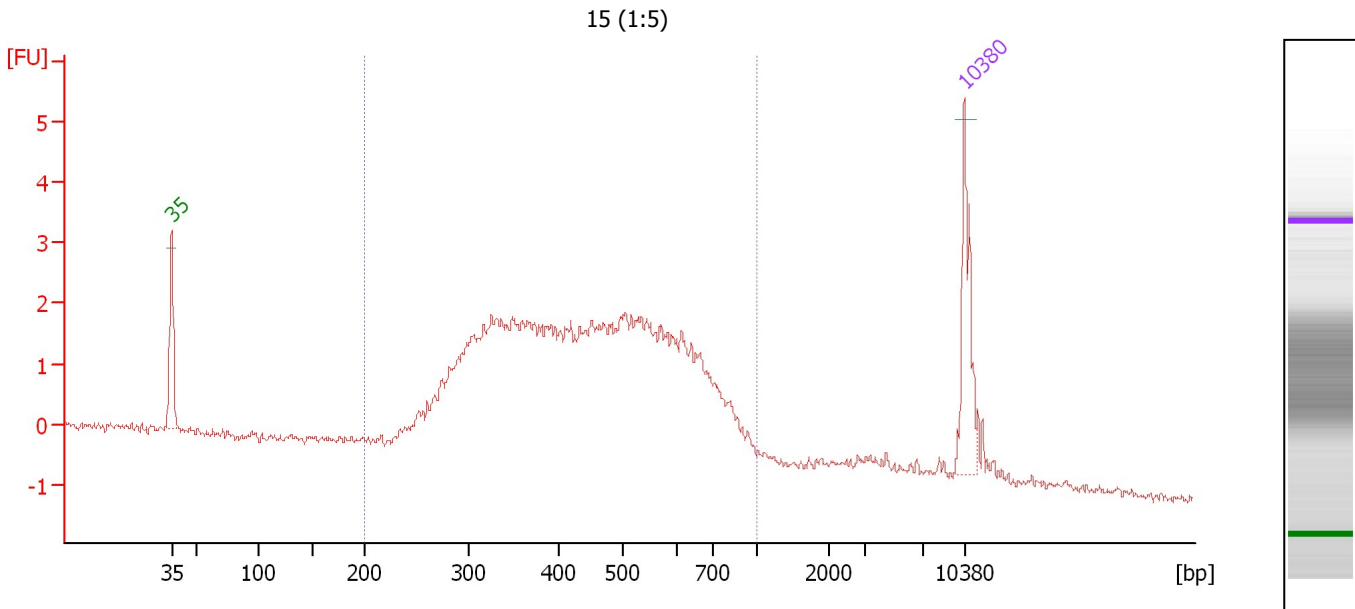
Region table for sample 6 : 14

From [bp]	Average Size [bp]	To [bp]	Corr. Area	Molarity [pmol/l]	Co % of lor Total	Size distribution in CV [%]	Conc. [pg/μl]
200	398	1,000	73.8	11,656.9	95	28.7	2,775.35

Assay Class: High Sensitivity DNA Assay
 Data Path: C:\...ents and Settings\Bioanalyzer\2015-08-13\2015-08-13_003.xad

Created: 8/13/2015 1:19:48 PM
 Modified: 8/13/2015 1:58:44 PM

Electropherogram Summary Continued ...



Setpoint Deviations for sample 7 : 15 (1:5)

Height Threshold [FU] : 3

Overall Results for sample 7 : 15 (1:5)

Number of peaks found: 0 Corr. Area 1: 73.4
 Noise: 0.1

Peak table for sample 7 : 15 (1:5)

Pea k	Size [bp]	Conc. [pg/μl]	Molarity [pmol/l]	Observations	Aligned Migration Time [s]
1	35	125.00	5,411.3	Lower Marker	43.00
2	10,380	75.00	10.9	Upper Marker	113.00

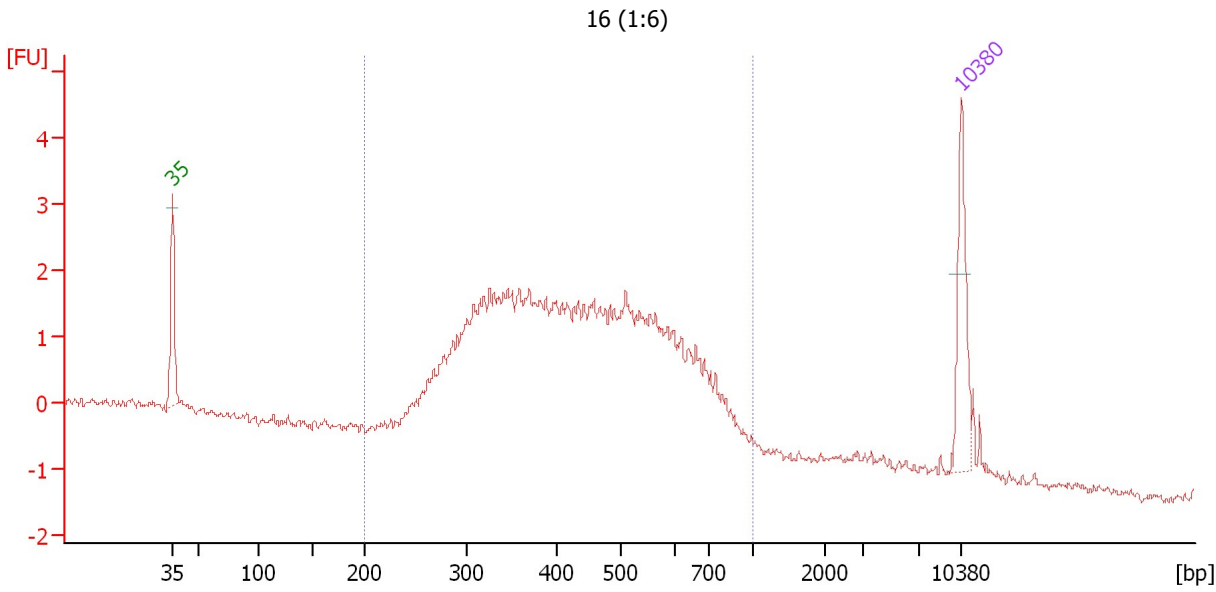
Region table for sample 7 : 15 (1:5)

From [bp]	Average Size [bp]	To [bp]	Corr. Area	Molarity [pmol/l]	Co % of lor Total	Size distribution in CV [%]	Conc. [pg/μl]
200	466	1,000	73.4	6,266.7	89	32.0	1,675.67

Assay Class: High Sensitivity DNA Assay
 Data Path: C:\...ents and Settings\Bioanalyzer\2015-08-13\2015-08-13_003.xad

Created: 8/13/2015 1:19:48 PM
 Modified: 8/13/2015 1:58:44 PM

Electropherogram Summary Continued ...



Setpoint Deviations for sample 8 : 16 (1:6)

Height Threshold [FU] : 3

Overall Results for sample 8 : 16 (1:6)

Number of peaks found: 0 Corr. Area 1: 66.4
 Noise: 0.1

Peak table for sample 8 : 16 (1:6)

Pea	Size [bp]	Conc. [pg/μl]	Molarity [pmol/l]	Observations	Aligned Migration Time [s]
1	35	125.00	5,411.3	Lower Marker	43.00
2	10,380	75.00	10.9	Upper Marker	113.00

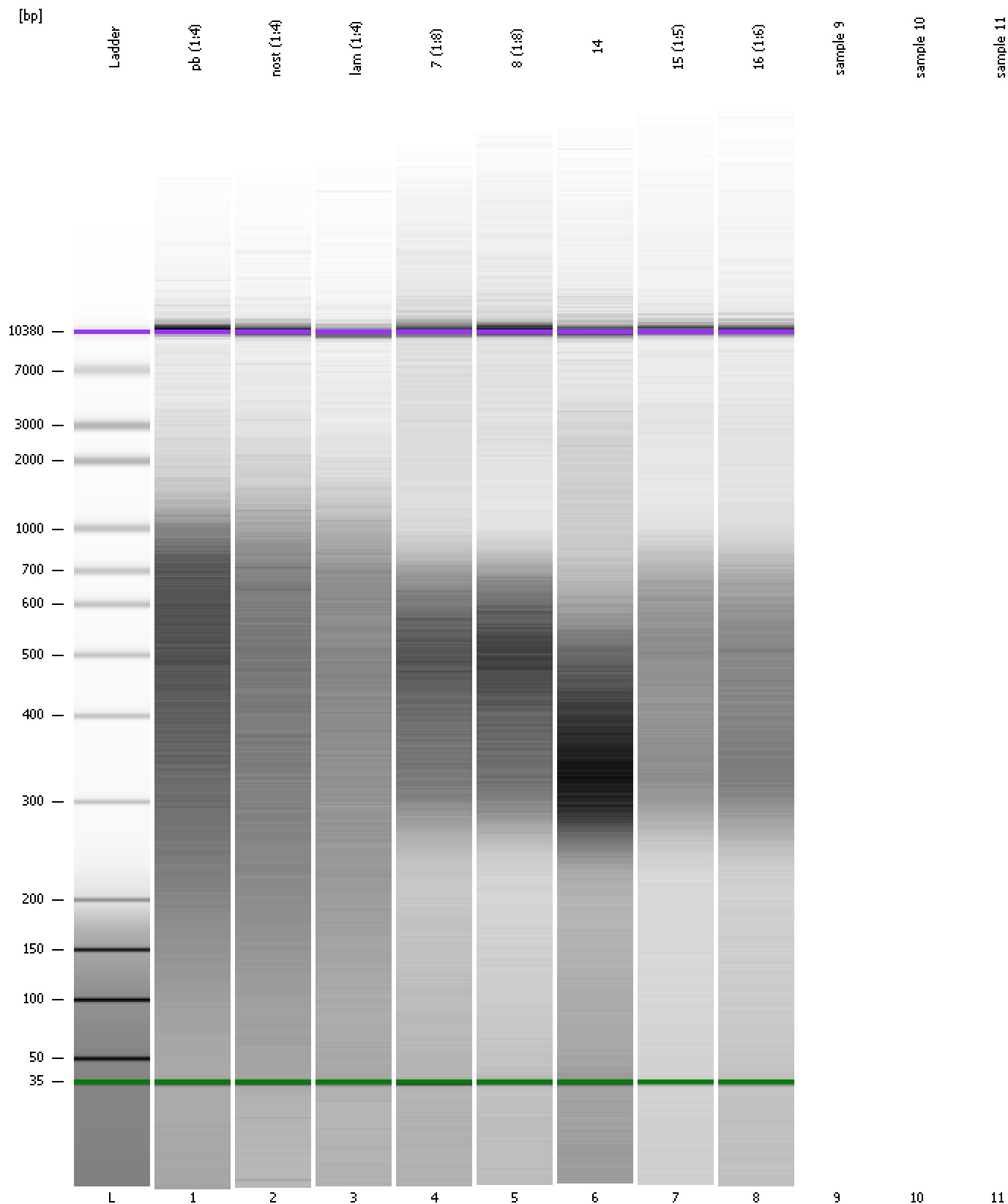
Region table for sample 8 : 16 (1:6)

From [bp]	Average Size [bp]	To [bp]	Corr. Area	Molarity [pmol/l]	Co % of lor Total	Size distribution in CV [%]	Conc. [pg/μl]
200	455	1,000	66.4	6,472.4	94	31.0	1,711.77

Assay Class: High Sensitivity DNA Assay
Data Path: C:\...ents and Settings\Bioanalyzer\2015-08-13\2015-08-13_003.xad

Created: 8/13/2015 1:19:48 PM
Modified: 8/13/2015 1:58:44 PM

Gel Image



Assay Class: High Sensitivity DNA Assay
Data Path: C:\...ents and Settings\Bioanalyzer\2015-08-13\2015-08-13_003.xad

Created: 8/13/2015 1:19:48 PM
Modified: 8/13/2015 1:58:44 PM

Invalid Samples

Sample 9 has not been run, no results available.

Sample 10 has not been run, no results available.

Sample 11 has not been run, no results available.