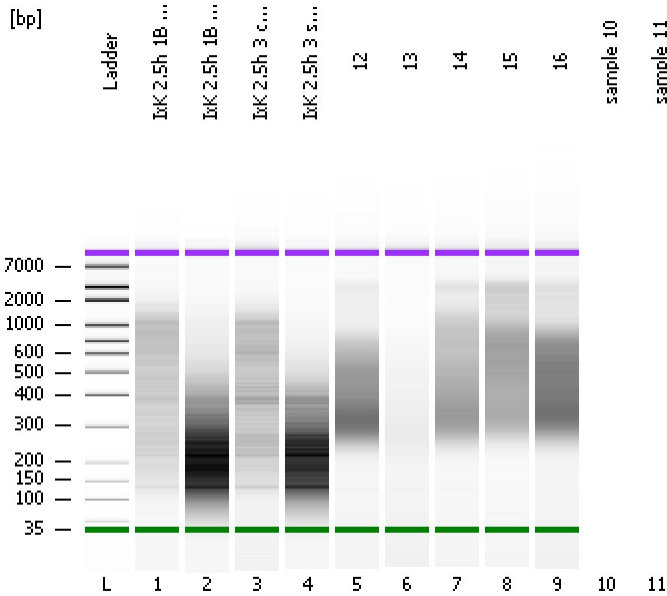


Assay Class: High Sensitivity DNA Assay  
 Data Path: C:\...ents and Settings\Bioanalyzer\2015-08-13\2015-08-13\_002.xad

Created: 8/13/2015 11:27:46 AM  
 Modified: 8/13/2015 12:04:21 PM

**Electrophoresis File Run Summary**



Instrument Information:

Instrument Name: DE13701086      Firmware: C.01.069  
 Serial#: DE13701086      Type: G2938B

Assay Information:

Assay Origin Path: C:\Program Files\Agilent\2100 bioanalyzer\2100 expert\assays\dsDNA\High Sensitivity DNA.xsy  
 Assay Class: High Sensitivity DNA Assay  
 Version: 1.03  
 Assay Comments: Copyright © 2003-2010 Agilent Technologies

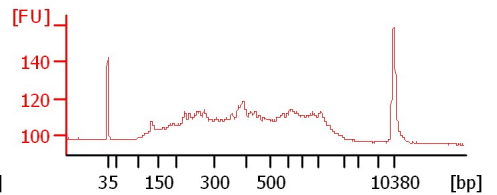
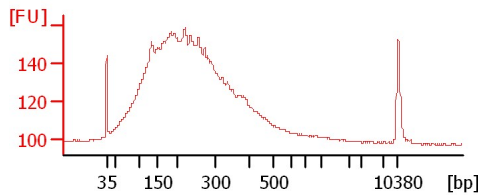
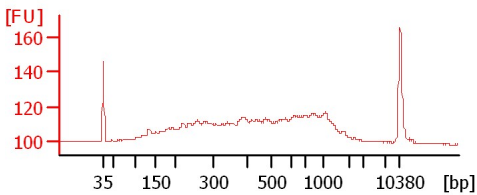
Chip Information:

Chip Lot #:   
 Reagent Kit Lot #:   
 Chip Comments:

**IxK 2.5h 1B cDNA**

**IxK 2.5h 1B sheared**

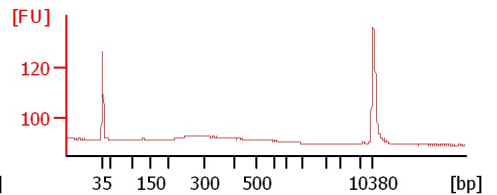
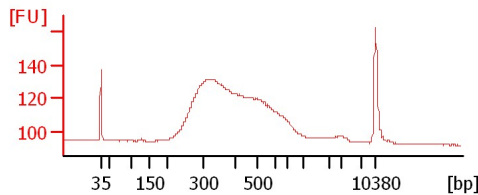
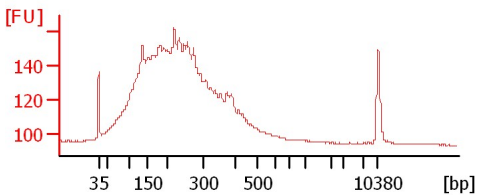
**IxK 2.5h 3 cDNA**



**IxK 2.5h 3 sheared**

**12**

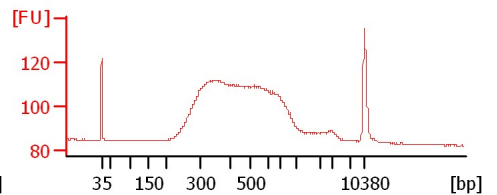
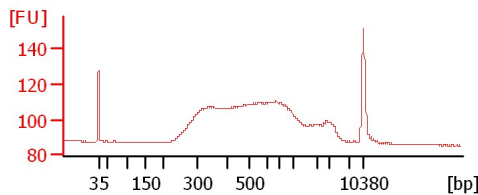
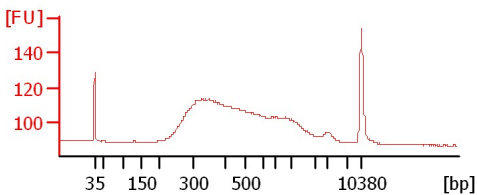
**13**



**14**

**15**

**16**



Assay Class: High Sensitivity DNA Assay  
Data Path: C:\...ents and Settings\Bioanalyzer\2015-08-13\2015-08-13\_002.xad

Created: 8/13/2015 11:27:46 AM  
Modified: 8/13/2015 12:04:21 PM

**Electrophoresis File Run Summary (Chip Summary)**

Sample Name	Sample Comment	Rest. Digest	Status	Observation	Result Label	Result Color
IxK 2.5h 1B cDNA		<input type="checkbox"/>	✓			
IxK 2.5h 1B sheared		<input type="checkbox"/>	✓			
IxK 2.5h 3 cDNA		<input type="checkbox"/>	✓			
IxK 2.5h 3 sheared		<input type="checkbox"/>	✓			
12		<input type="checkbox"/>	✓			
13		<input type="checkbox"/>	✓			
14		<input type="checkbox"/>	✓			
15		<input type="checkbox"/>	✓			
16		<input type="checkbox"/>	✓			
sample 10		<input type="checkbox"/>				
sample 11		<input type="checkbox"/>				
Ladder		<input type="checkbox"/>	✓			

**Chip Lot #**

**Reagent Kit Lot #**

**Chip Comments :**

Assay Class: High Sensitivity DNA Assay  
Data Path: C:\...ents and Settings\Bioanalyzer\2015-08-13\2015-08-13\_002.xad

Created: 8/13/2015 11:27:46 AM  
Modified: 8/13/2015 12:04:21 PM

**Electrophoresis Assay Details**

**General Analysis Settings**

Number of Available Sample and Ladder Wells (Max.) : 12  
Minimum Visible Range [s] : 32  
Maximum Visible Range [s] : 138  
Start Analysis Time Range [s] : 33  
End Analysis Time Range [s] : 137.5  
Ladder Concentration [pg/μl] : 1950  
Uses Standard Area for Ladder Fragments  
Lower Marker Concentration [pg/μl] : 125  
Upper Marker Concentration [pg/μl] : 75  
Used Upper Marker for Quantitation  
Standard Curve Fit is Point to Point  
Show Data Aligned to Lower and Upper Marker

**Integrator Settings**

Integration Start Time [s] : 33.05  
Integration End Time [s] : 137  
Slope Threshold : 0.8  
Height Threshold [FU] : 5  
Area Threshold : 0.1  
Width Threshold [s] : 0.6  
Baseline Plateau [s] : 0.5

**Filter Settings**

Filter Width [s] : 0.5  
Polynomial Order : 4

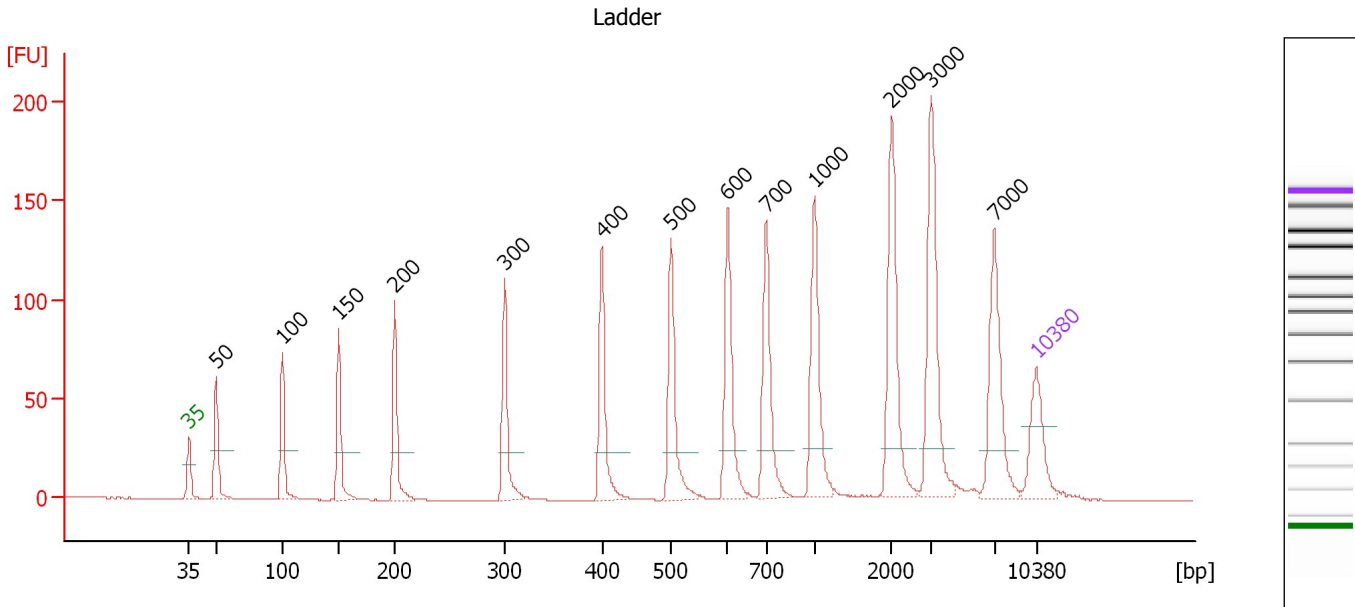
**Ladder**

Ladder Peak	Size	Area
1	35	160
2	50	210
3	100	208
4	150	221
5	200	242
6	300	270
7	400	305
8	500	306
9	600	336
10	700	321
11	1000	366
12	2000	413
13	3000	411
14	7000	400
15	10380	214

Assay Class: High Sensitivity DNA Assay  
 Data Path: C:\...ents and Settings\Bioanalyzer\2015-08-13\2015-08-13\_002.xad

Created: 8/13/2015 11:27:46 AM  
 Modified: 8/13/2015 12:04:21 PM

**Electropherogram Summary**



**Overall Results for Ladder**

Noise: 0.1

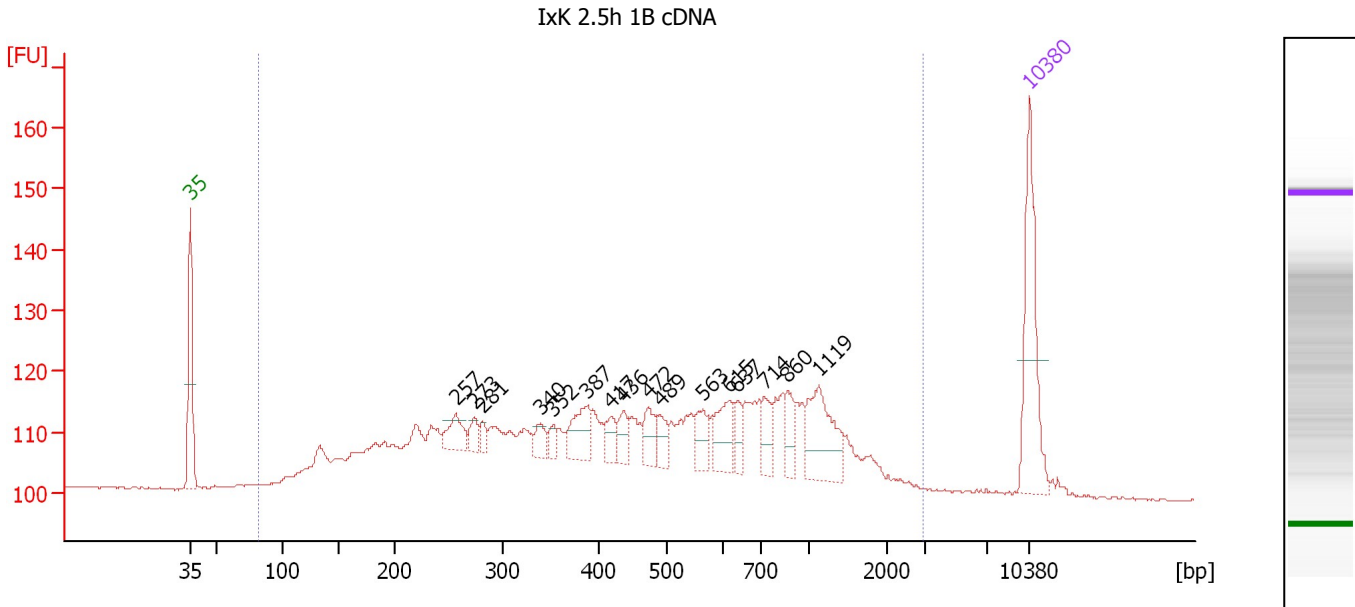
**Peak table for Ladder**

Peak	Size [bp]	Conc. [pg/μl]	Molarity [pmol/l]	Observations	Aligned Migration Time [s]
1	35	125.00	5,411.3	Lower Marker	43.00
2	50	150.00	4,545.5	Ladder Peak	45.25
3	100	150.00	2,272.7	Ladder Peak	50.71
4	150	150.00	1,515.2	Ladder Peak	55.38
5	200	150.00	1,136.4	Ladder Peak	60.00
6	300	150.00	757.6	Ladder Peak	69.08
7	400	150.00	568.2	Ladder Peak	77.10
8	500	150.00	454.5	Ladder Peak	82.82
9	600	150.00	378.8	Ladder Peak	87.49
10	700	150.00	324.7	Ladder Peak	90.67
11	1,000	150.00	227.3	Ladder Peak	94.67
12	2,000	150.00	113.6	Ladder Peak	101.06
13	3,000	150.00	75.8	Ladder Peak	104.32
14	7,000	150.00	32.5	Ladder Peak	109.52
15	10,380	75.00	10.9	Upper Marker	113.00

Assay Class: High Sensitivity DNA Assay  
 Data Path: C:\...ents and Settings\Bioanalyzer\2015-08-13\2015-08-13\_002.xad

Created: 8/13/2015 11:27:46 AM  
 Modified: 8/13/2015 12:04:21 PM

**Electropherogram Summary Continued ...**



**Overall Results for sample 1 : IxK 2.5h 1B cDNA**

Number of peaks found: 16                      Corr. Area 1: 745.6  
 Noise: 0.2

**Peak table for sample 1 : IxK 2.5h 1B cDNA**

Peak	Size [bp]	Conc. [pg/μl]	Molarity [pmol/l]	Observations	Aligned Migration Time [s]
1	35	125.00	5,411.3	Lower Marker	43.00
2	257	28.64	169.1		65.15
3	273	14.14	78.4		66.66
4	281	9.01	48.5		67.37
5	340	15.09	67.3		72.26
6	352	9.87	42.4		73.29
7	387	36.69	143.7		76.04
8	417	17.78	64.7		78.04
9	436	17.04	59.2		79.16
10	472	22.49	72.2		81.20
11	489	17.31	53.7		82.18
12	563	23.55	63.3		85.78
13	615	35.05	86.4		87.96
14	637	12.89	30.7		88.67
15	714	19.97	42.4		90.85
16	860	19.79	34.9		92.81
17	1,119	59.60	80.7		95.43
18	10,380	75.00	10.9	Upper Marker	113.00

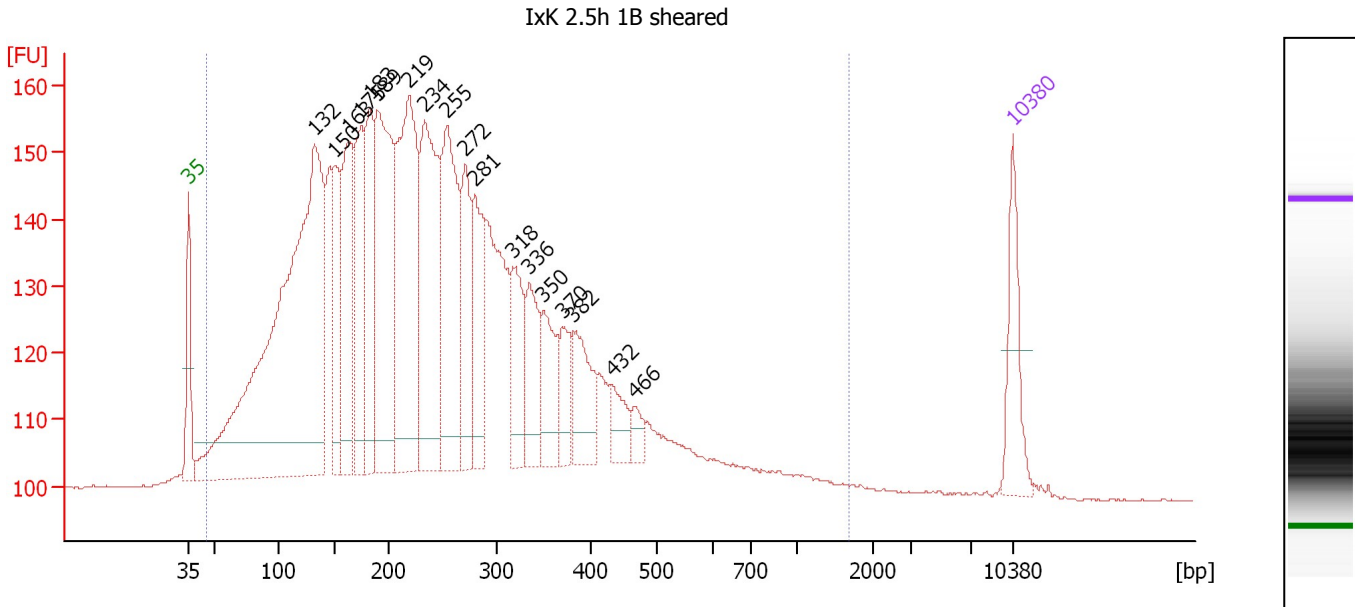
**Region table for sample 1 : IxK 2.5h 1B cDNA**

From [bp]	Average Size [bp]	To [bp]	Corr. Area	Molarity [pmol/l]	Co % of Ior Total	Size distribution in CV [%]	Conc. [pg/μl]
81	581	2,933	745.6	6,656.3	98	73.3	1,369.57

Assay Class: High Sensitivity DNA Assay  
 Data Path: C:\...ents and Settings\Bioanalyzer\2015-08-13\2015-08-13\_002.xad

Created: 8/13/2015 11:27:46 AM  
 Modified: 8/13/2015 12:04:21 PM

**Electropherogram Summary Continued ...**



**Overall Results for sample 2 : IxK 2.5h 1B sheared**

Number of peaks found: 18                      Corr. Area 1: 2,301.3  
 Noise: 0.2

**Peak table for sample 2 : IxK 2.5h 1B sheared**

Peak	Size [bp]	Conc. [pg/μl]	Molarity [pmol/l]	Observations	Aligned Migration Time [s]
1	35	125.00	5,411.3	Lower Marker	43.00
2	132	1,367.32	15,710.2		53.69
3	150	163.07	1,649.3		55.36
4	163	268.59	2,496.3		56.58
5	175	212.15	1,839.2		57.67
6	183	216.07	1,792.9		58.39
7	189	421.18	3,368.4		59.03
8	219	460.09	3,187.8		61.70
9	234	372.53	2,415.7		63.06
10	255	327.82	1,950.8		64.96
11	272	151.74	846.6		66.50
12	281	167.47	904.5		67.31
13	318	120.12	572.2		70.53
14	336	106.89	482.6		71.93
15	350	95.36	412.5		73.11
16	370	64.09	262.4		74.69
17	382	102.74	407.0		75.69
18	432	48.55	170.1		78.95
19	466	24.65	80.2		80.85
20	10,380	75.00	10.9	Upper Marker	113.00

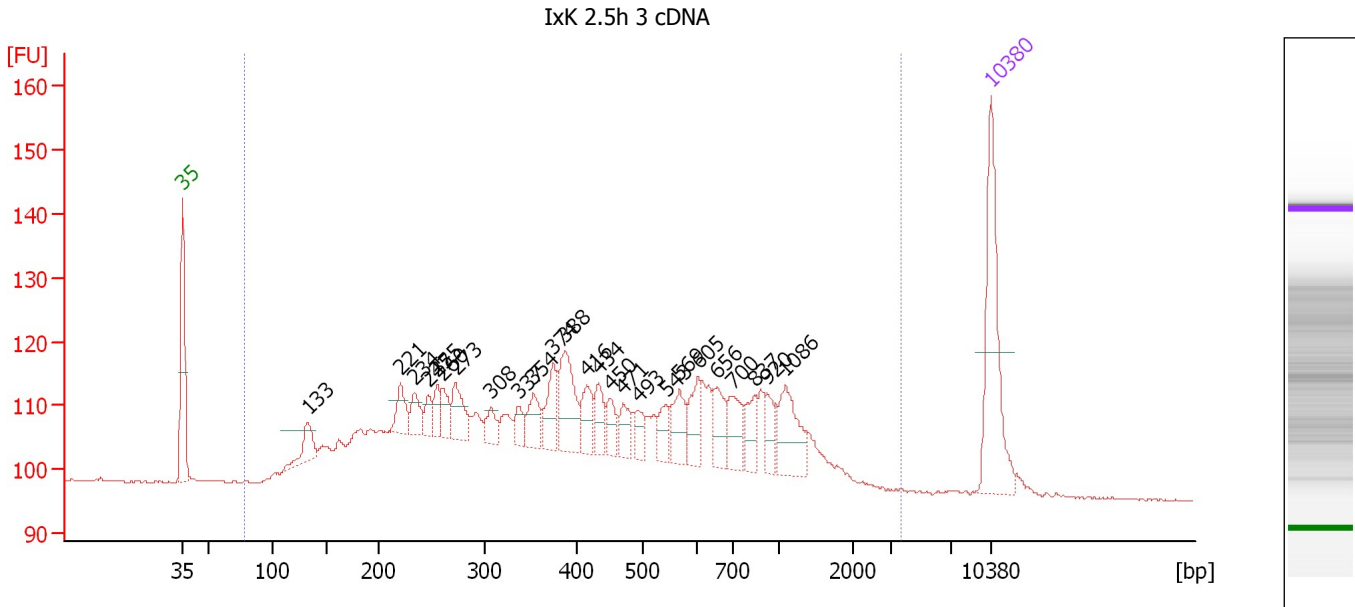
**Region table for sample 2 : IxK 2.5h 1B sheared**

From [bp]	Average Size [bp]	To [bp]	Corr. Area	Molarity [pmol/l]	Co % of Ior Total	Size distribution in CV [%]	Conc. [pg/μl]
45	259	1,678	2,301.3	52,708.5	98	61.8	6,006.38

Assay Class: High Sensitivity DNA Assay  
 Data Path: C:\...ents and Settings\Bioanalyzer\2015-08-13\2015-08-13\_002.xad

Created: 8/13/2015 11:27:46 AM  
 Modified: 8/13/2015 12:04:21 PM

**Electropherogram Summary Continued ...**



**Overall Results for sample 3 : IxK 2.5h 3 cDNA**

Number of peaks found: 25                      Corr. Area 1: 819.9  
 Noise: 0.1

**Peak table for sample 3 : IxK 2.5h 3 cDNA**

Peak	Size [bp]	Conc. [pg/μl]	Molarity [pmol/l]	Observations	Aligned Migration Time [s]
1	35	125.00	5,411.3	Lower Marker	43.00
2	133	32.95	375.0		53.80
3	221	23.20	159.3		61.89
4	234	19.56	126.7		63.09
5	247	13.63	83.5		64.29
6	255	14.57	86.5		65.03
7	260	17.85	104.0		65.44
8	273	30.81	170.9		66.64
9	308	14.89	73.4		69.69
10	337	13.40	60.3		72.04
11	354	23.71	101.6		73.38
12	374	30.61	123.9		75.04
13	388	53.45	208.9		76.11
14	416	24.10	87.8		78.00
15	434	21.33	74.6		79.02
16	450	16.66	56.1		79.99
17	471	17.59	56.6		81.14
18	493	12.62	38.8		82.43
19	543	16.21	45.2		84.83
20	569	26.57	70.8		86.03
21	605	25.15	63.0		87.65
22	656	26.12	60.3		89.27
23	700	26.21	56.8		90.65
24	837	21.18	38.3		92.50
25	920	17.00	28.0		93.61

Assay Class: High Sensitivity DNA Assay  
 Data Path: C:\...ents and Settings\Bioanalyzer\2015-08-13\2015-08-13\_002.xad

Created: 8/13/2015 11:27:46 AM  
 Modified: 8/13/2015 12:04:21 PM

### Electropherogram Summary Continued ...

#### ... Peak table for sample 3 : IxK 2.5h 3 cDNA

Peak	Size [bp]	Conc. [pg/μl]	Molarity [pmol/l]	Observations	Aligned Migration Time [s]
26	1,086	38.48	53.7		95.22
27	10,380	75.00	10.9	Upper Marker	113.00

#### Region table for sample 3 : IxK 2.5h 3 cDNA

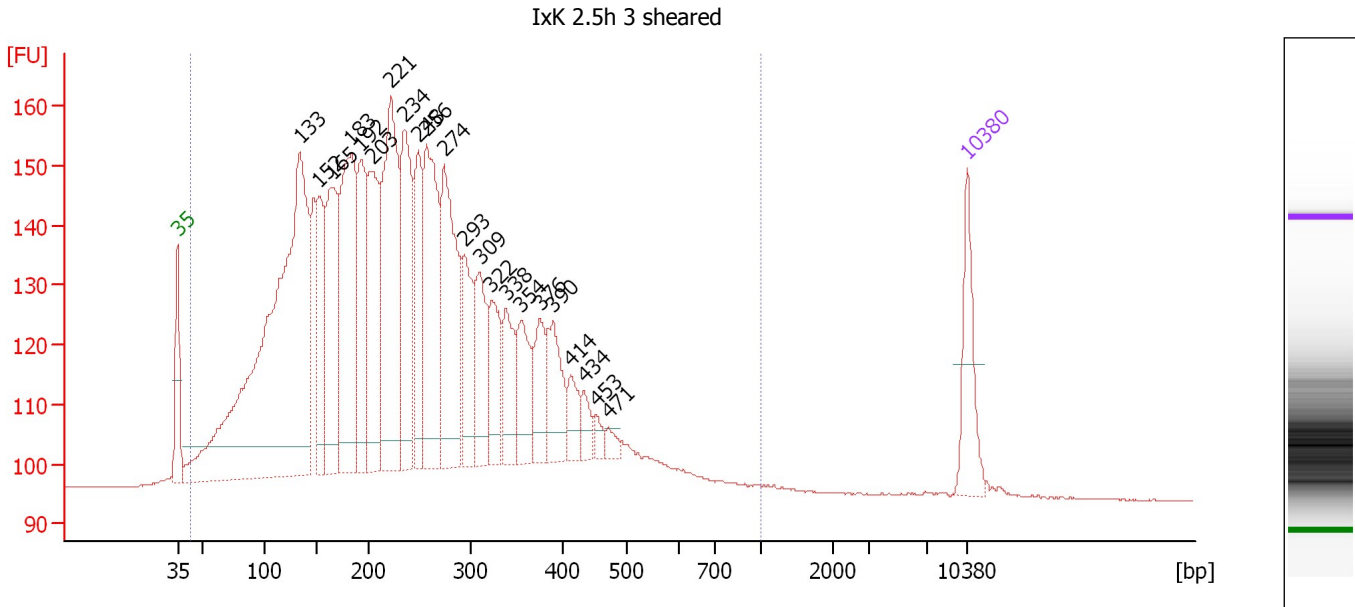
From [bp]	Average Size [bp]	To [bp]	Corr. Area	Molarity [pmol/l]	Co % of Ior Total	Size distribution in CV [%]	Conc. [pg/μl]
79	532	3,668	819.9	7,176.7	98	73.5	1,441.42



Assay Class: High Sensitivity DNA Assay  
 Data Path: C:\...ents and Settings\Bioanalyzer\2015-08-13\2015-08-13\_002.xad

Created: 8/13/2015 11:27:46 AM  
 Modified: 8/13/2015 12:04:21 PM

**Electropherogram Summary Continued ...**



**Overall Results for sample 4 : IxK 2.5h 3 sheared**

Number of peaks found: 22                      Corr. Area 1: 2,256.6  
 Noise: 0.1

**Peak table for sample 4 : IxK 2.5h 3 sheared**


Peak	Size [bp]	Conc. [pg/μl]	Molarity [pmol/l]	Observations	Aligned Migration Time [s]
1	35	125.00	5,411.3	Lower Marker	43.00
2	133	1,304.75	14,825.0		53.82
3	152	174.23	1,741.5		55.53
4	165	283.44	2,604.8		56.75
5	183	382.40	3,170.4		58.41
6	192	202.96	1,602.1		59.26
7	203	252.38	1,886.3		60.25
8	221	399.80	2,741.5		61.91
9	234	250.11	1,616.0		63.14
10	248	164.25	1,003.3		64.36
11	256	306.02	1,812.2		65.07
12	274	293.27	1,624.3		66.68
13	293	122.87	635.7		68.43
14	309	126.49	620.3		69.80
15	322	102.94	484.5		70.84
16	338	94.16	422.3		72.12
17	354	95.27	407.3		73.44
18	376	73.78	297.6		75.14
19	390	101.84	395.9		76.27
20	414	42.66	156.2		77.88
21	434	28.25	98.5		79.06
22	453	15.89	53.1		80.15
23	471	14.51	46.6		81.19
24	10,380	75.00	10.9	Upper Marker	113.00

Assay Class: High Sensitivity DNA Assay  
Data Path: C:\...ents and Settings\Bioanalyzer\2015-08-13\2015-08-13\_002.xad

Created: 8/13/2015 11:27:46 AM  
Modified: 8/13/2015 12:04:21 PM

**Electropherogram Summary Continued ...**

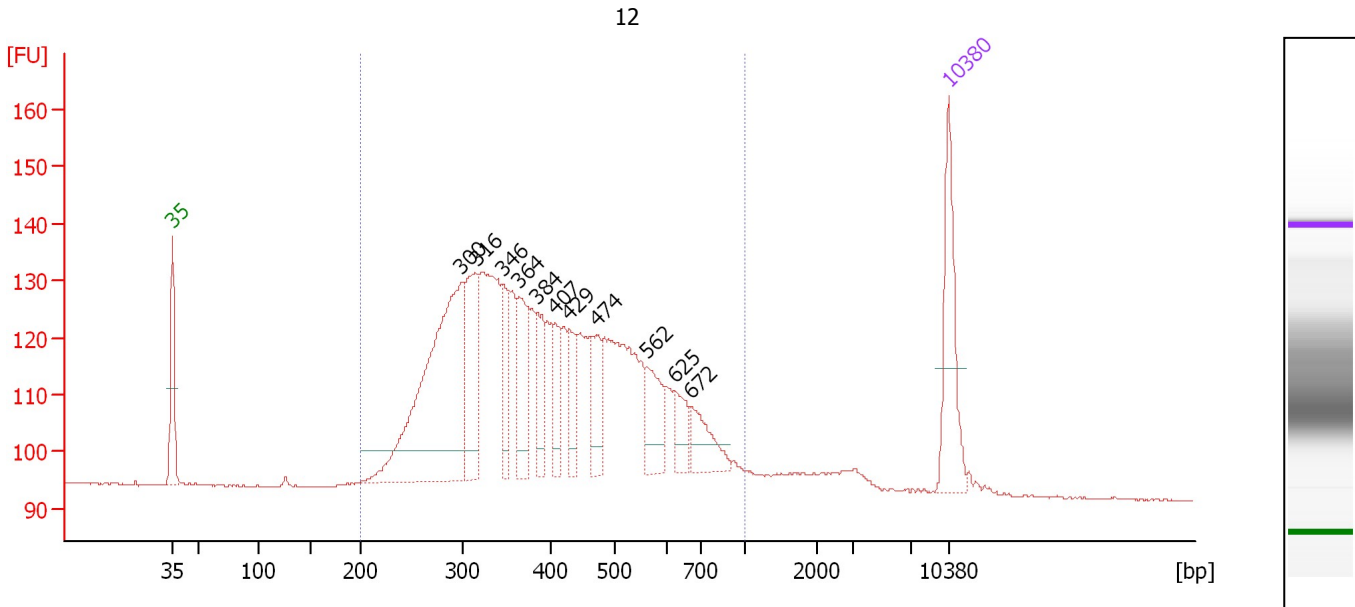
... Region table for sample 4 : IxK 2.5h 3 sheared

From [bp]	Average Size [bp]	To [bp]	Corr. Area	Molarity [pmol/l]	Co % of lor Total	Size distribution in CV [%]	Conc. [pg/μl]
43	247	1,000	2,256.6	50,241.2	 99	48.2	5,776.89

Assay Class: High Sensitivity DNA Assay  
 Data Path: C:\...ents and Settings\Bioanalyzer\2015-08-13\2015-08-13\_002.xad

Created: 8/13/2015 11:27:46 AM  
 Modified: 8/13/2015 12:04:21 PM

**Electropherogram Summary Continued ...**



**Overall Results for sample 5 : 12**

Number of peaks found: 11                      Corr. Area 1: 1,044.1  
 Noise: 0.1

**Peak table for sample 5 : 12**

Peak	Size [bp]	Conc. [pg/μl]	Molarity [pmol/l]	Observations	Aligned Migration Time [s]
1	35	125.00	5,411.3	Lower Marker	43.00
2	300	368.67	1,863.4		69.06
3	316	105.66	506.8		70.36
4	346	53.71	235.3		72.76
5	364	78.17	325.5		74.20
6	384	50.47	199.0		75.84
7	407	37.50	139.8		77.47
8	429	34.99	123.5		78.77
9	474	51.22	163.8		81.32
10	562	52.74	142.1		85.74
11	625	29.81	72.3		88.29
12	672	42.94	96.8		89.78
13	10,380	75.00	10.9	Upper Marker	113.00

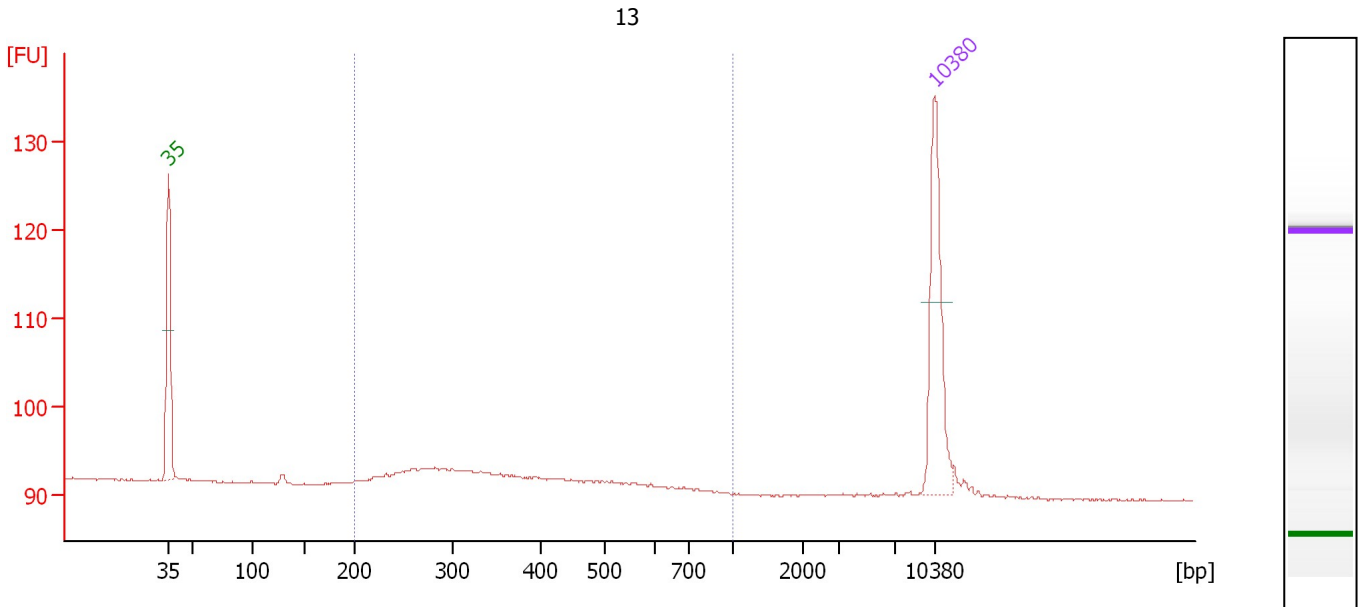
**Region table for sample 5 : 12**

From [bp]	Average Size [bp]	To [bp]	Corr. Area	Molarity [pmol/l]	Co % of lor Total	Size distribution in CV [%]	Conc. [pg/μl]
200	421	1,000	1,044.1	7,067.8	94	33.0	1,717.45

Assay Class: High Sensitivity DNA Assay  
 Data Path: C:\...ents and Settings\Bioanalyzer\2015-08-13\2015-08-13\_002.xad

Created: 8/13/2015 11:27:46 AM  
 Modified: 8/13/2015 12:04:21 PM

**Electropherogram Summary Continued ...**



**Overall Results for sample 6 : 13**

Number of peaks found: 0                      Corr. Area 1: 44.7  
 Noise: 0.1

**Peak table for sample 6 : 13**

Peak	Size [bp]	Conc. [pg/μl]	Molarity [pmol/l]	Observations	Aligned Migration Time [s]
1	35	125.00	5,411.3	Lower Marker	43.00
2	10,380	75.00	10.9	Upper Marker	113.00

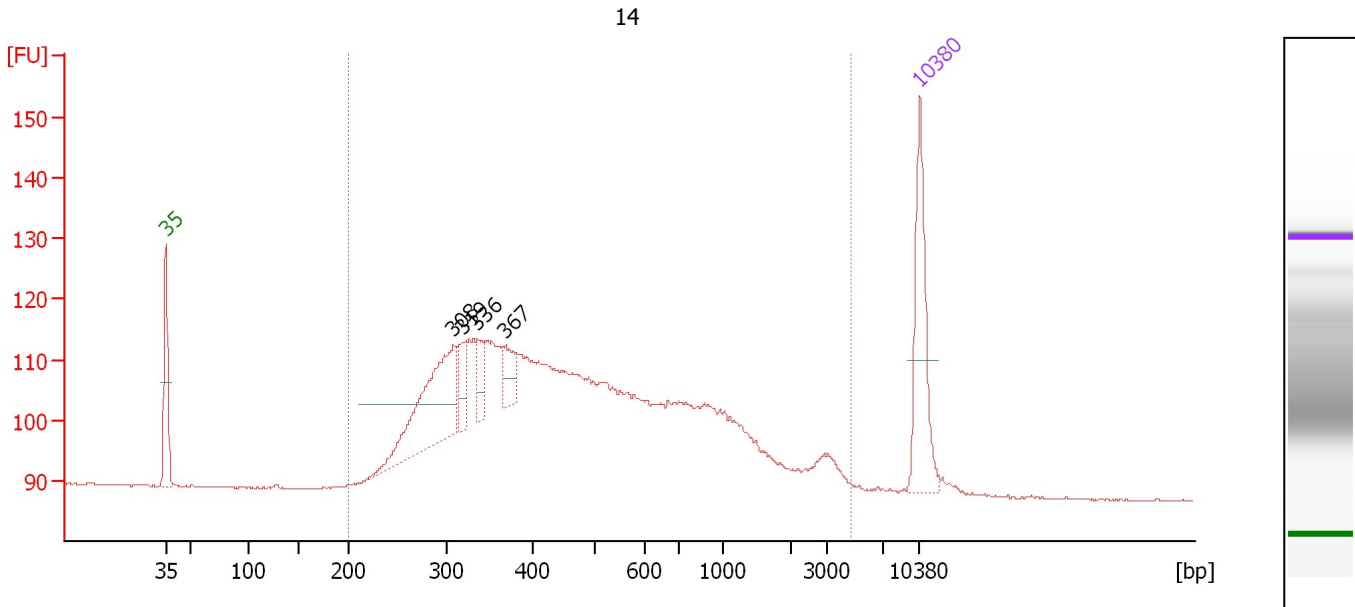
**Region table for sample 6 : 13**

From [bp]	Average Size [bp]	To [bp]	Corr. Area	Molarity [pmol/l]	Co % of Ior Total	Size distribution in CV [%]	Conc. [pg/μl]
200	356	1,000	44.7	518.7	90	29.6	109.50

Assay Class: High Sensitivity DNA Assay  
 Data Path: C:\...ents and Settings\Bioanalyzer\2015-08-13\2015-08-13\_002.xad

Created: 8/13/2015 11:27:46 AM  
 Modified: 8/13/2015 12:04:21 PM

**Electropherogram Summary Continued ...**



**Overall Results for sample 7 : 14**

Number of peaks found: 4                      Corr. Area 1: 827.6  
 Noise: 0.1

**Peak table for sample 7 : 14**

Peak	Size [bp]	Conc. [pg/μl]	Molarity [pmol/l]	Observations	Aligned Migration Time [s]
1	35	125.00	5,411.3	Lower Marker	43.00
2	308	152.85	751.6		69.73
3	319	26.25	124.6		70.62
4	336	23.15	104.4		71.96
5	367	25.78	106.3		74.49
6	10,380	75.00	10.9	Upper Marker	113.00

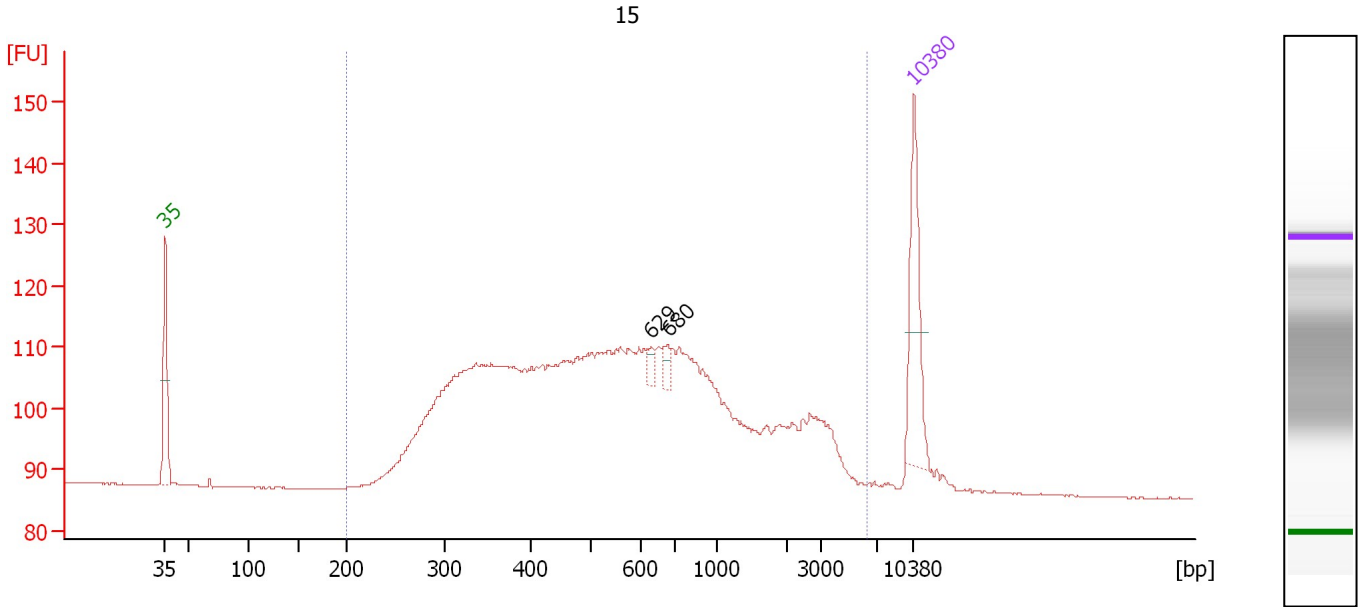
**Region table for sample 7 : 14**

From [bp]	Average Size [bp]	To [bp]	Corr. Area	Molarity [pmol/l]	Co % of lor Total	Size distribution in CV [%]	Conc. [pg/μl]
200	641	4,807	827.6	5,021.0	98	92.7	1,368.96

Assay Class: High Sensitivity DNA Assay  
 Data Path: C:\...ents and Settings\Bioanalyzer\2015-08-13\2015-08-13\_002.xad

Created: 8/13/2015 11:27:46 AM  
 Modified: 8/13/2015 12:04:21 PM

**Electropherogram Summary Continued ...**



**Overall Results for sample 8 : 15**

Number of peaks found: 2                      Corr. Area 1: 880.5  
 Noise: 0.1

**Peak table for sample 8 : 15**

Peak	Size [bp]	Conc. [pg/μl]	Molarity [pmol/l]	Observations	Aligned Migration Time [s]
1	35	125.00	5,411.3	Lower Marker	43.00
2	629	9.43	22.7		88.42
3	680	11.91	26.6		90.02
4	10,380	75.00	10.9	Upper Marker	113.00

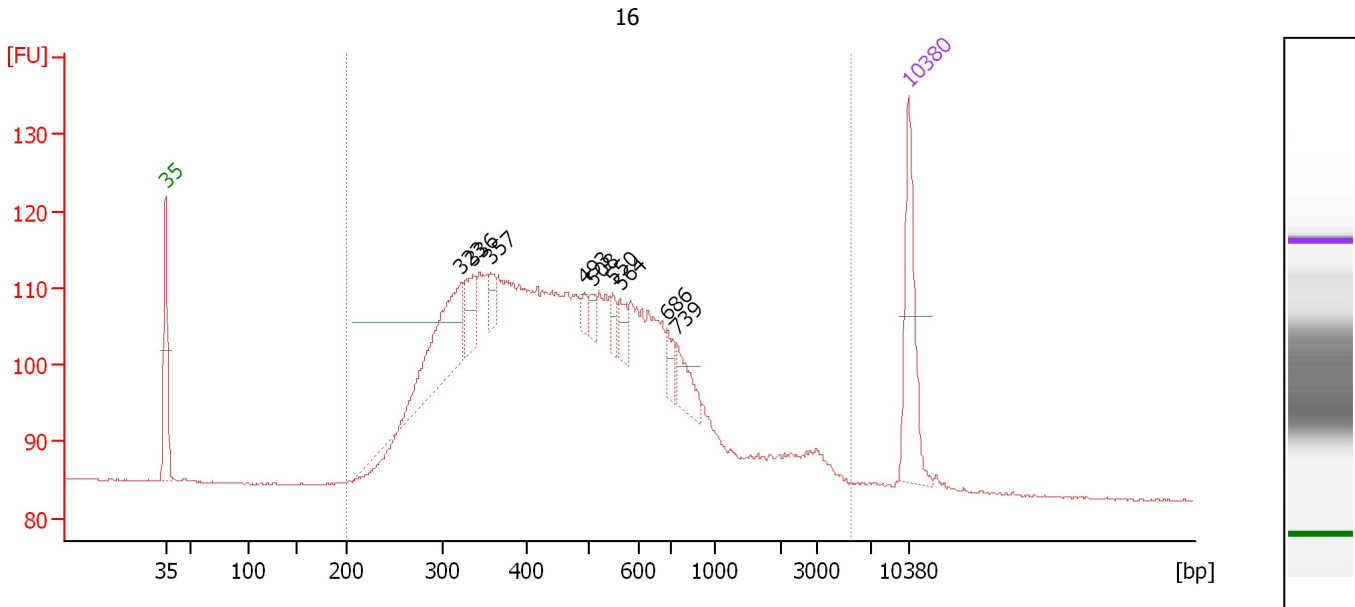
**Region table for sample 8 : 15**

From [bp]	Average Size [bp]	To [bp]	Corr. Area	Molarity [pmol/l]	Co % of lor Total	Size distribution in CV [%]	Conc. [pg/μl]
200	831	6,359	880.5	5,382.7	98	100.0	1,684.88

Assay Class: High Sensitivity DNA Assay  
 Data Path: C:\...ents and Settings\Bioanalyzer\2015-08-13\2015-08-13\_002.xad

Created: 8/13/2015 11:27:46 AM  
 Modified: 8/13/2015 12:04:21 PM

**Electropherogram Summary Continued ...**



**Overall Results for sample 9 : 16**

Number of peaks found: 9                      Corr. Area 1: 933.1  
 Noise: 0.1

**Peak table for sample 9 : 16**

Peak	Size [bp]	Conc. [pg/μl]	Molarity [pmol/l]	Observations	Aligned Migration Time [s]
1	35	125.00	5,411.3	Lower Marker	43.00
2	323	139.04	653.1		70.89
3	336	38.26	172.7		71.94
4	357	17.30	73.4		73.65
5	493	8.64	26.5		82.45
6	508	10.91	32.5		83.20
7	550	13.51	37.2		85.16
8	564	18.34	49.3		85.81
9	686	17.62	38.9		90.24
10	739	29.98	61.4		91.19
11	10,380	75.00	10.9	Upper Marker	113.00

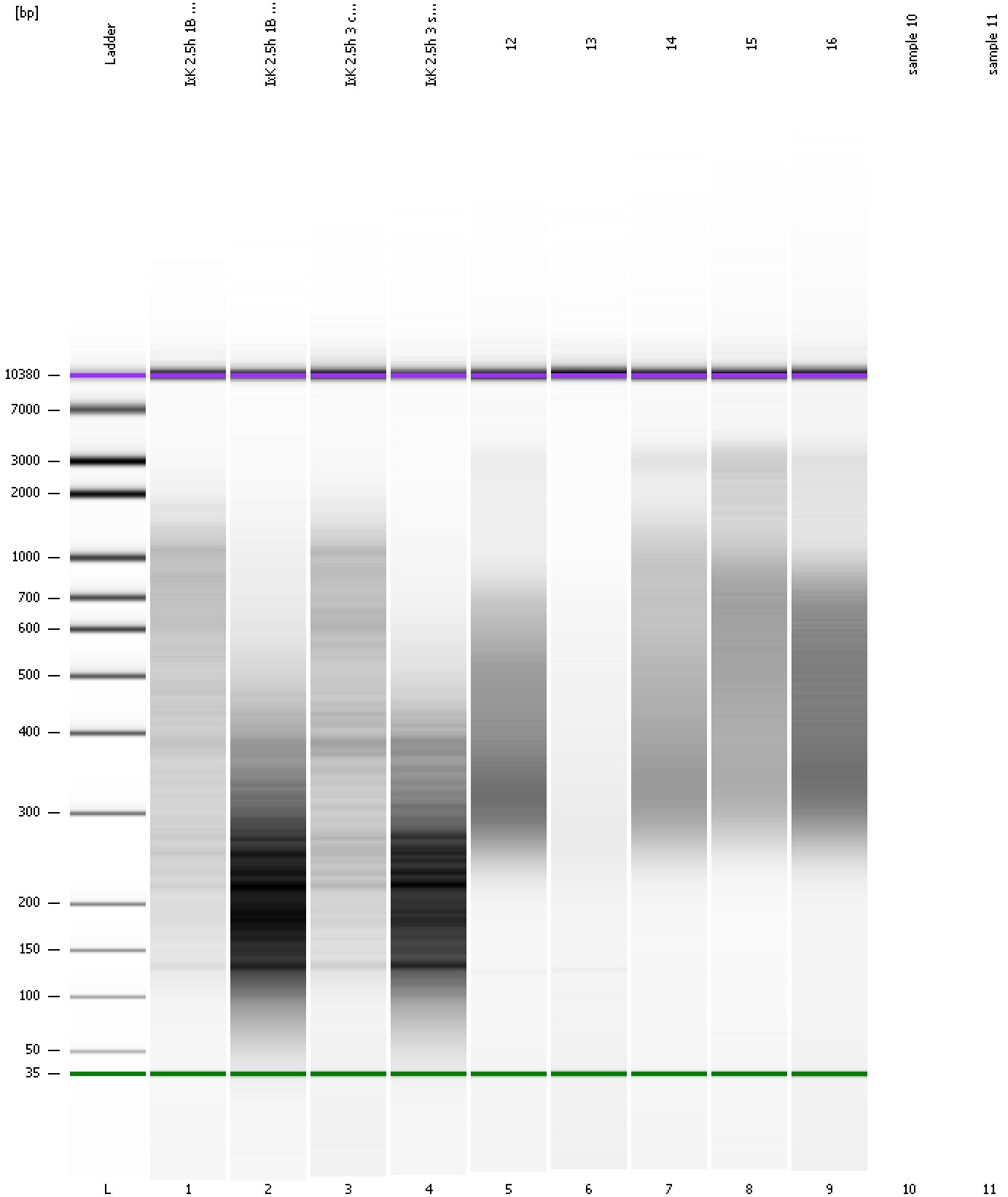
**Region table for sample 9 : 16**

From [bp]	Average Size [bp]	To [bp]	Corr. Area	Molarity [pmol/l]	Co % of lor Total	Size distribution in CV [%]	Conc. [pg/μl]
200	609	5,545	933.1	7,595.1	99	94.5	2,104.17

Assay Class: High Sensitivity DNA Assay  
Data Path: C:\...ents and Settings\Bioanalyzer\2015-08-13\2015-08-13\_002.xad

Created: 8/13/2015 11:27:46 AM  
Modified: 8/13/2015 12:04:21 PM

**Gel Image**





Assay Class: High Sensitivity DNA Assay  
Data Path: C:\...ents and Settings\Bioanalyzer\2015-08-13\2015-08-13\_002.xad

Created: 8/13/2015 11:27:46 AM  
Modified: 8/13/2015 12:04:21 PM

**Invalid Samples**

Sample 10 has not been run, no results available.

Sample 11 has not been run, no results available.