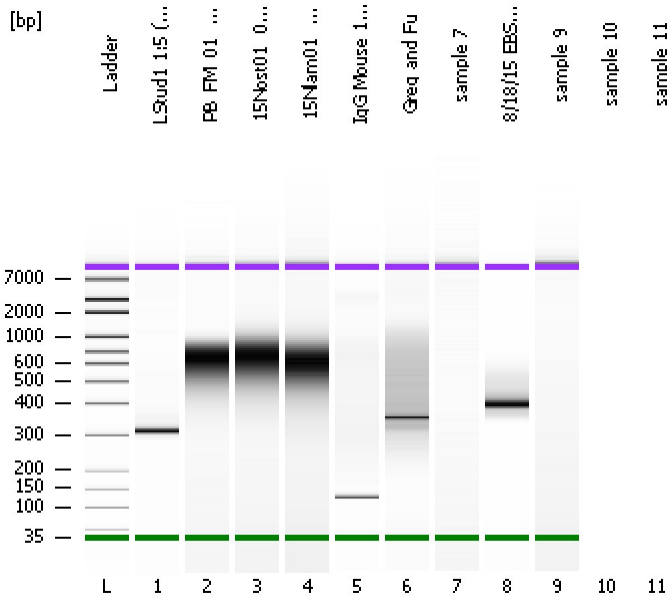


Assay Class: High Sensitivity DNA Assay
 Data Path: C:\...ents and Settings\Bioanalyzer\2015-08-18\2015-08-18_001.xad

Created: 8/18/2015 11:27:26 AM
 Modified: 8/18/2015 12:03:02 PM

Electrophoresis File Run Summary



Instrument Information:

Instrument Name: DE13701086 Firmware: C.01.069
 Serial#: DE13701086 Type: G2938B

Assay Information:

Assay Origin Path: C:\Program Files\Agilent\2100 bioanalyzer\2100 expert\assays\dsDNA\High Sensitivity DNA.xsy
 Assay Class: High Sensitivity DNA Assay
 Version: 1.03
 Assay Comments: Copyright © 2003-2010 Agilent Technologies

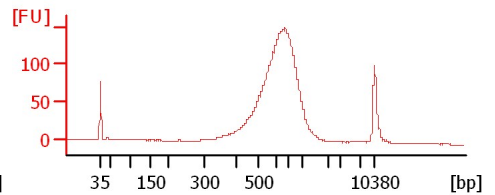
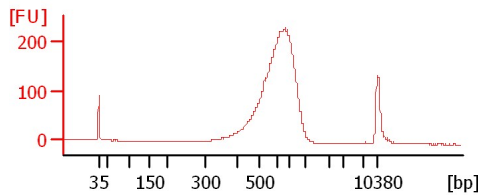
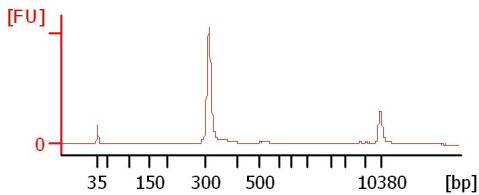
Chip Information:

Chip Lot #:
 Reagent Kit Lot #:
 Chip Comments:

LStud1 1:5 (1:38)

PB_FM_01 0.53X size sel lib

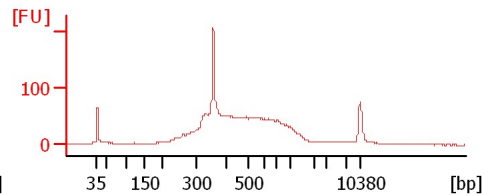
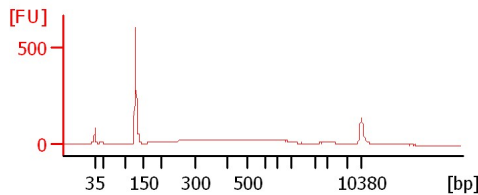
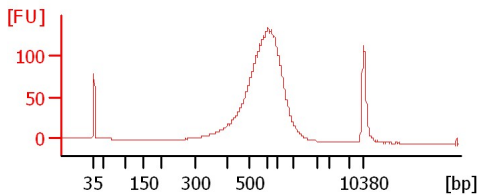
15Nost01 0.53X size sel lib



15Nlam01 0.53X size sel lib

IgG Mouse 1 0.55X size sel lib

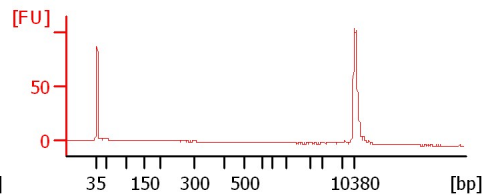
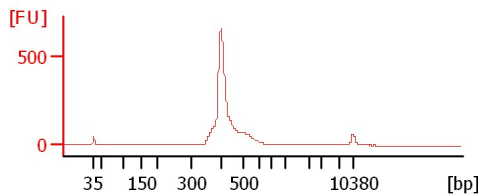
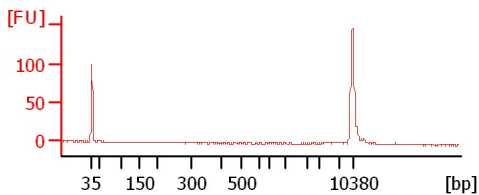
Greg and Fu



sample 7

8/18/15 EBSDF124

sample 9



Assay Class: High Sensitivity DNA Assay
Data Path: C:\...ents and Settings\Bioanalyzer\2015-08-18\2015-08-18_001.xad

Created: 8/18/2015 11:27:26 AM
Modified: 8/18/2015 12:03:02 PM

Electrophoresis File Run Summary (Chip Summary)

Sample Name	Sample Comment	Rest. Digest	Status	Observation	Result Label	Result Color
LStud1 1:5 (1:38)		<input type="checkbox"/>	✓			
PB_FM_01 0.53X size sel lib		<input type="checkbox"/>	✓			
15Nost01 0.53X size sel lib		<input type="checkbox"/>	✓			
15Nlam01 0.53X size sel lib		<input type="checkbox"/>	✓			
IgG Mouse 1 0.55X size sel lib		<input type="checkbox"/>	✓			
Greg and Fu		<input type="checkbox"/>	✓			
sample 7		<input type="checkbox"/>	✓			
8/18/15 EBSDF124		<input type="checkbox"/>	✓			
sample 9		<input type="checkbox"/>	✓			
sample 10		<input type="checkbox"/>				
sample 11		<input type="checkbox"/>				
Ladder		<input type="checkbox"/>	✓			

Chip Lot #

Reagent Kit Lot #

Chip Comments :

Assay Class: High Sensitivity DNA Assay
Data Path: C:\...ents and Settings\Bioanalyzer\2015-08-18\2015-08-18_001.xad

Created: 8/18/2015 11:27:26 AM
Modified: 8/18/2015 12:03:02 PM

Electrophoresis Assay Details

General Analysis Settings

Number of Available Sample and Ladder Wells (Max.) : 12
Minimum Visible Range [s] : 32
Maximum Visible Range [s] : 138
Start Analysis Time Range [s] : 33
End Analysis Time Range [s] : 137.5
Ladder Concentration [pg/μl] : 1950
Uses Standard Area for Ladder Fragments
Lower Marker Concentration [pg/μl] : 125
Upper Marker Concentration [pg/μl] : 75
Used Upper Marker for Quantitation
Standard Curve Fit is Point to Point
Show Data Aligned to Lower and Upper Marker

Integrator Settings

Integration Start Time [s] : 33.05
Integration End Time [s] : 137
Slope Threshold : 0.8
Height Threshold [FU] : 5
Area Threshold : 0.1
Width Threshold [s] : 0.6
Baseline Plateau [s] : 0.5

Filter Settings

Filter Width [s] : 0.5
Polynomial Order : 4

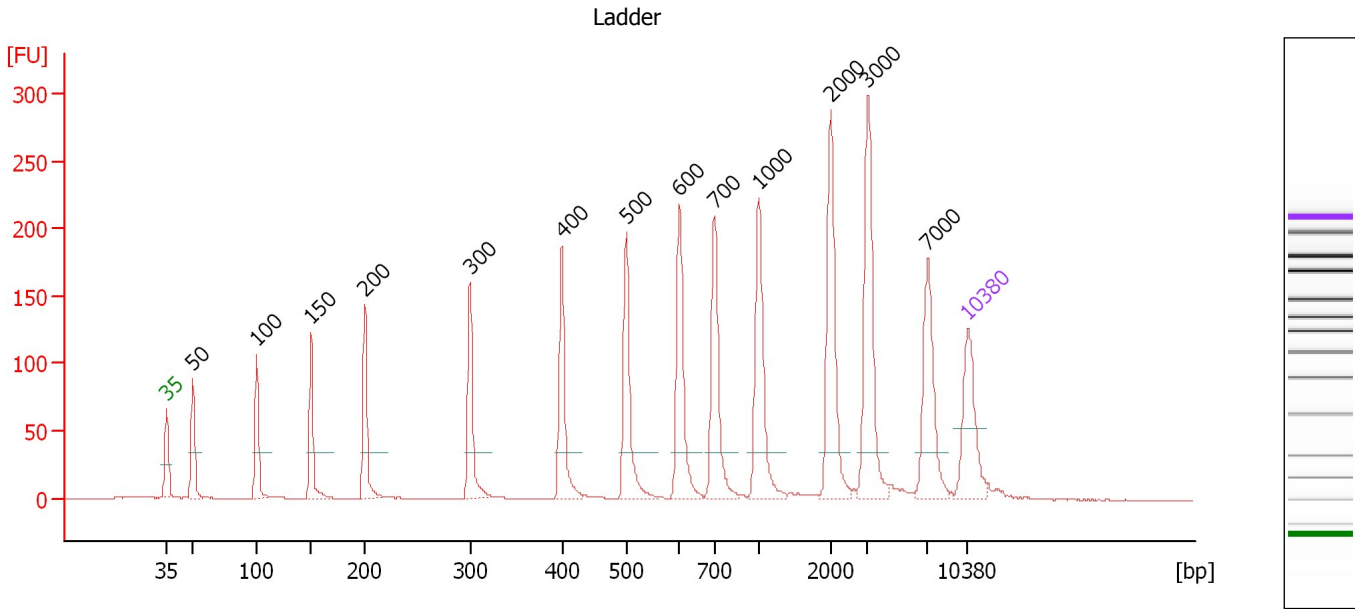
Ladder

Ladder Peak	Size	Area
1	35	160
2	50	210
3	100	208
4	150	221
5	200	242
6	300	270
7	400	305
8	500	306
9	600	336
10	700	321
11	1000	366
12	2000	413
13	3000	411
14	7000	400
15	10380	214

Assay Class: High Sensitivity DNA Assay
 Data Path: C:\...ents and Settings\Bioanalyzer\2015-08-18\2015-08-18_001.xad

Created: 8/18/2015 11:27:26 AM
 Modified: 8/18/2015 12:03:02 PM

Electropherogram Summary



Overall Results for Ladder

Noise: 0.1

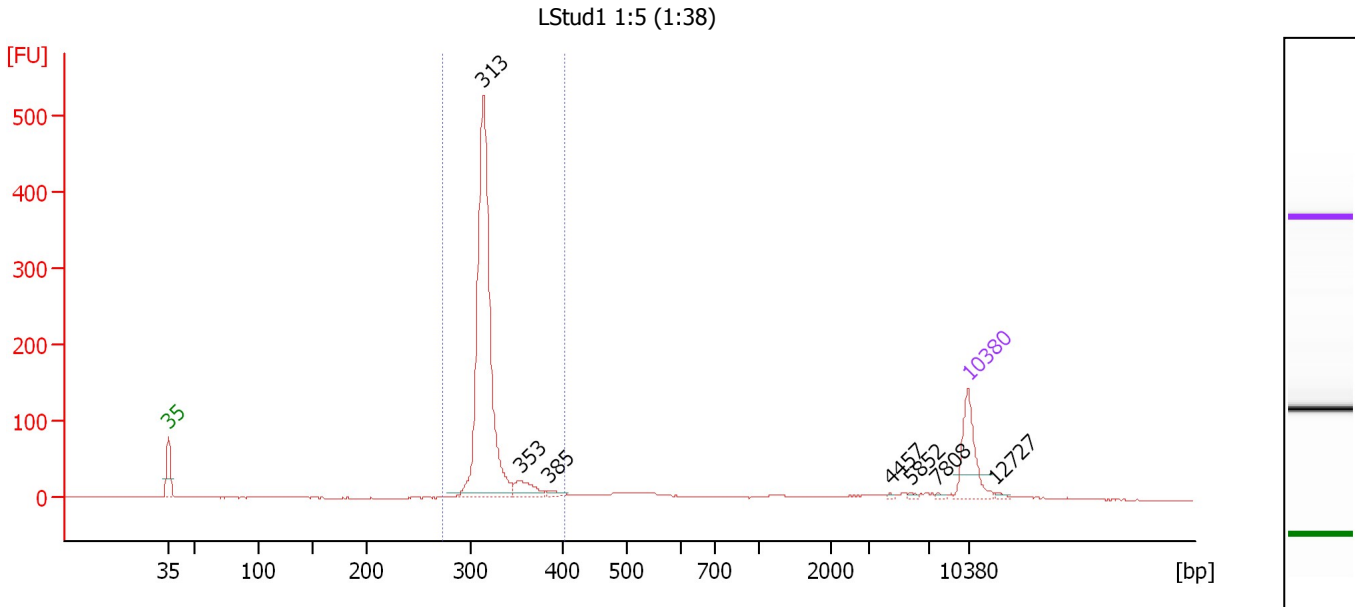
Peak table for Ladder

Peak	Size [bp]	Conc. [pg/μl]	Molarity [pmol/l]	Observations	Aligned Migration Time [s]
1	35	125.00	5,411.3	Lower Marker	43.00
2	50	150.00	4,545.5	Ladder Peak	45.28
3	100	150.00	2,272.7	Ladder Peak	50.88
4	150	150.00	1,515.2	Ladder Peak	55.63
5	200	150.00	1,136.4	Ladder Peak	60.34
6	300	150.00	757.6	Ladder Peak	69.52
7	400	150.00	568.2	Ladder Peak	77.53
8	500	150.00	454.5	Ladder Peak	83.17
9	600	150.00	378.8	Ladder Peak	87.79
10	700	150.00	324.7	Ladder Peak	90.86
11	1,000	150.00	227.3	Ladder Peak	94.73
12	2,000	150.00	113.6	Ladder Peak	101.02
13	3,000	150.00	75.8	Ladder Peak	104.28
14	7,000	150.00	32.5	Ladder Peak	109.50
15	10,380	75.00	10.9	Upper Marker	113.00

Assay Class: High Sensitivity DNA Assay
 Data Path: C:\...ents and Settings\Bioanalyzer\2015-08-18\2015-08-18_001.xad

Created: 8/18/2015 11:27:26 AM
 Modified: 8/18/2015 12:03:02 PM

Electropherogram Summary Continued ...



Overall Results for sample 1 : LStud1 1:5 (1:38)

Number of peaks found: 7 Corr. Area 1: 1,124.6
 Noise: 0.2

Peak table for sample 1 : LStud1 1:5 (1:38)

Peak	Size [bp]	Conc. [pg/μl]	Molarity [pmol/l]	Observations	Aligned Migration Time [s]
1	35	125.00	5,411.3	Lower Marker	43.00
2	313	714.51	3,456.0		70.58
3	353	38.78	166.5		73.75
4	385	8.47	33.4		76.32
5	4,457	1.49	0.5		106.19
6	5,852	2.88	0.7		108.01
7	7,808	2.76	0.5		110.34
8	10,380	75.00	10.9	Upper Marker	113.00
9	12,727	0.00	0.0		115.43

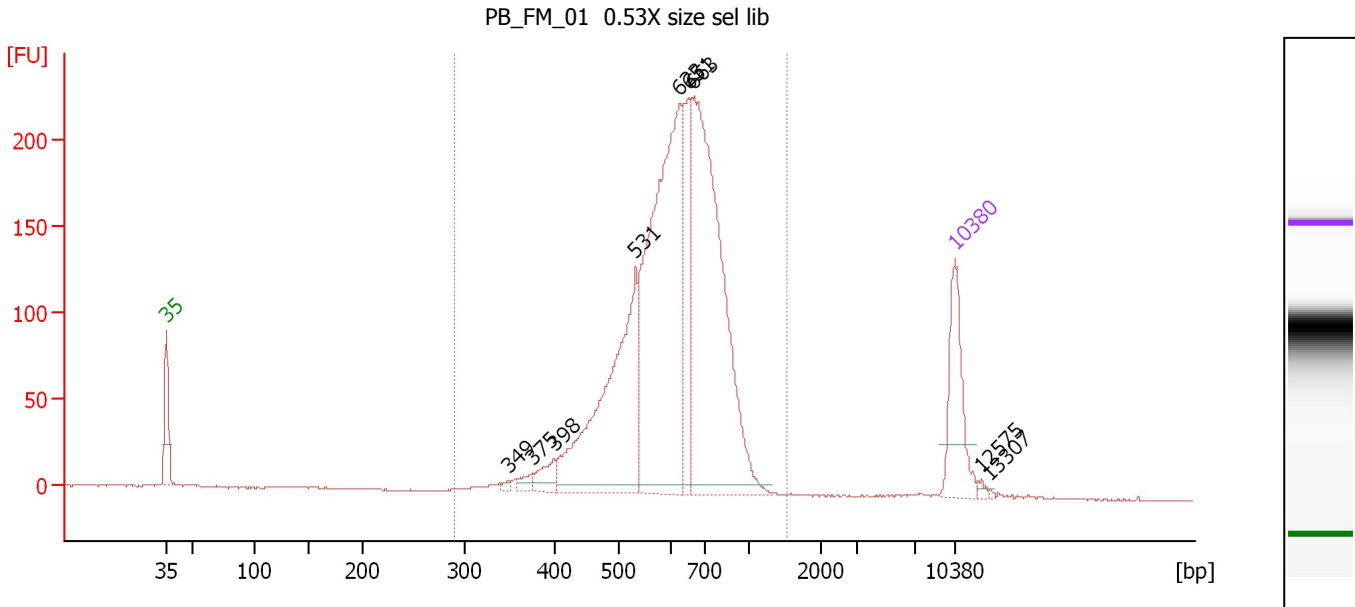
Region table for sample 1 : LStud1 1:5 (1:38)

From [bp]	Average Size [bp]	To [bp]	Corr. Area	Molarity [pmol/l]	Co % of Ior Total	Size distribution in CV [%]	Conc. [pg/μl]
273	319	404	1,124.6	3,724.9	81	5.6	784.27

Assay Class: High Sensitivity DNA Assay
 Data Path: C:\...ents and Settings\Bioanalyzer\2015-08-18\2015-08-18_001.xad

Created: 8/18/2015 11:27:26 AM
 Modified: 8/18/2015 12:03:02 PM

Electropherogram Summary Continued ...



Overall Results for sample 2 : PB FM 01 0.53X size sel lib

Number of peaks found: 9 Corr. Area 1: 2,485.6
 Noise: 0.4

Peak table for sample 2 : PB FM 01 0.53X size sel lib

Peak	Size [bp]	Conc. [pg/μl]	Molarity [pmol/l]	Observations	Aligned Migration Time [s]
1	35	125.00	5,411.3	Lower Marker	43.00
2	349	4.27	18.5		73.46
3	375	10.94	44.2		75.49
4	398	24.97	95.0		77.39
5	531	316.88	903.5		84.62
6	623	468.80	1,139.8		88.50
7	651	103.06	239.9		89.35
8	663	491.59	1,123.1		89.73
9	10,380	75.00	10.9	Upper Marker	113.00
10	12,575	0.00	0.0		115.27
11	13,307	0.00	0.0		116.03

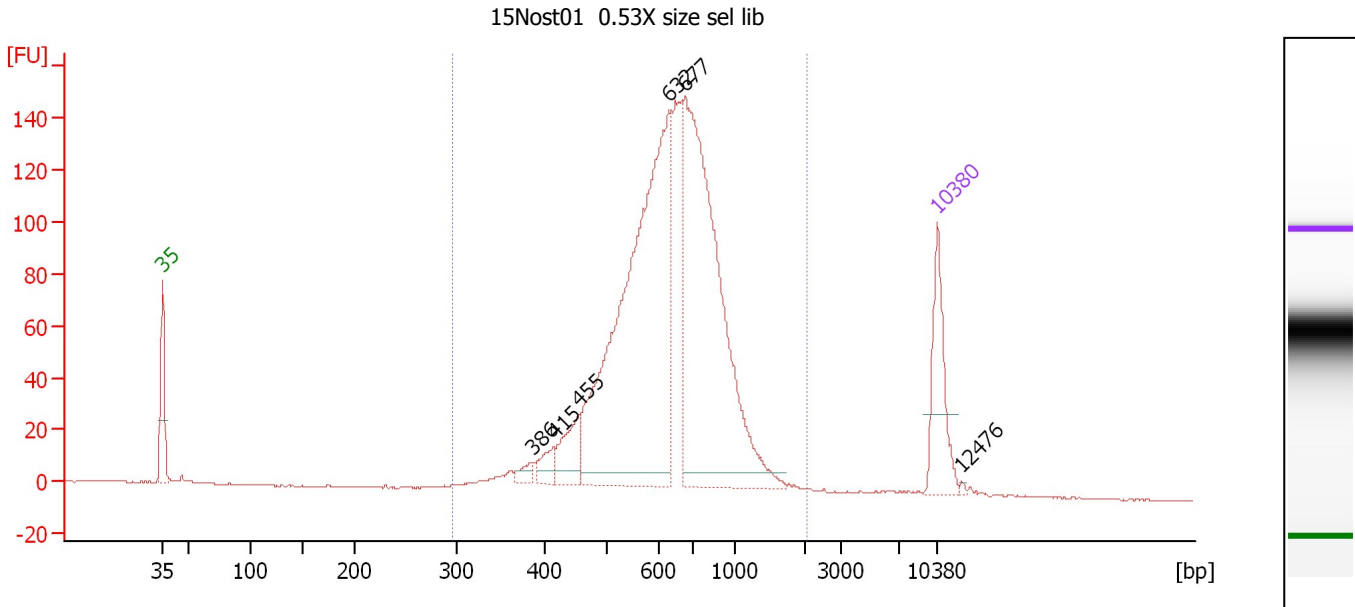
Region table for sample 2 : PB FM 01 0.53X size sel lib

From [bp]	Average Size [bp]	To [bp]	Corr. Area	Molarity [pmol/l]	Co % of lor Total	Size distribution in CV [%]	Conc. [pg/μl]
290	625	1,531	2,485.6	3,798.0	98	20.6	1,481.58

Assay Class: High Sensitivity DNA Assay
 Data Path: C:\...ents and Settings\Bioanalyzer\2015-08-18\2015-08-18_001.xad

Created: 8/18/2015 11:27:26 AM
 Modified: 8/18/2015 12:03:02 PM

Electropherogram Summary Continued ...



Overall Results for sample 3 : 15Nost01 0.53X size sel lib

Number of peaks found: 6 Corr. Area 1: 1,819.7
 Noise: 0.2

Peak table for sample 3 : 15Nost01 0.53X size sel lib

Peak	Size [bp]	Conc. [pg/μl]	Molarity [pmol/l]	Observations	Aligned Migration Time [s]
1	35	125.00	5,411.3	Lower Marker	43.00
2	386	14.37	56.5		76.39
3	415	23.68	86.5		78.36
4	455	55.49	184.8		80.63
5	632	671.11	1,609.2		88.77
6	677	582.89	1,304.0		90.16
7	10,380	75.00	10.9	Upper Marker	113.00
8	12,476	0.00	0.0		115.17

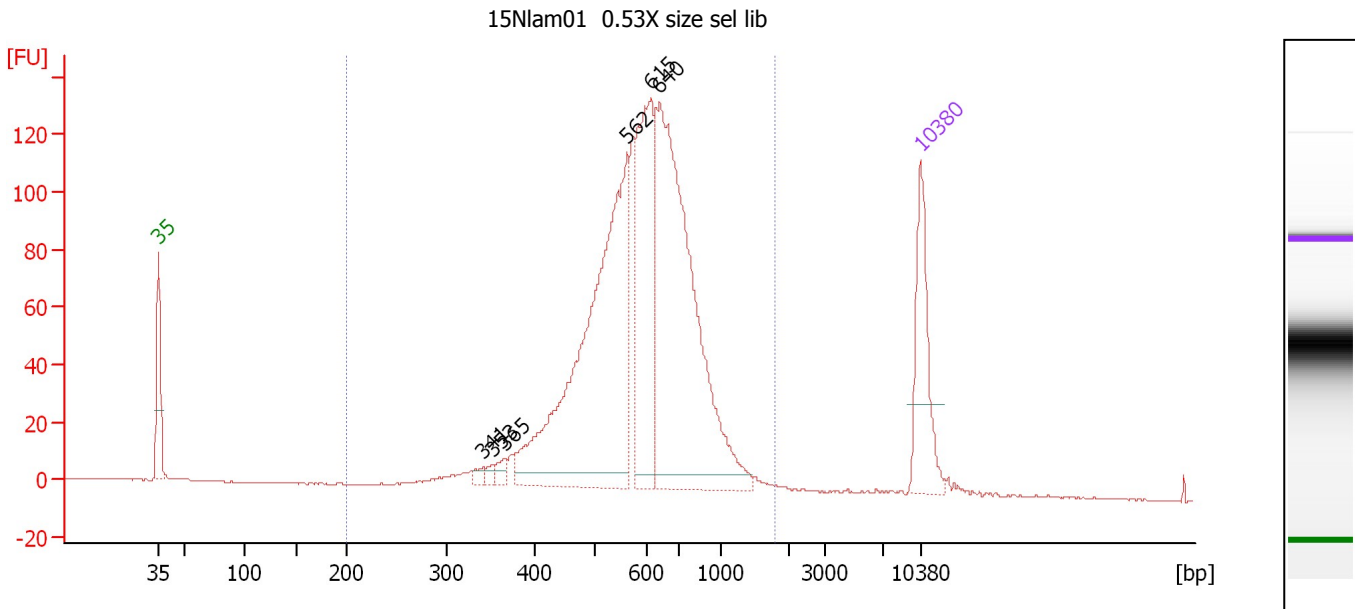
Region table for sample 3 : 15Nost01 0.53X size sel lib

From [bp]	Average Size [bp]	To [bp]	Corr. Area	Molarity [pmol/l]	Co % of Ior Total	Size distribution in CV [%]	Conc. [pg/μl]
296	672	2,077	1,819.7	3,909.5	97	30.3	1,581.78

Assay Class: High Sensitivity DNA Assay
 Data Path: C:\...ents and Settings\Bioanalyzer\2015-08-18\2015-08-18_001.xad

Created: 8/18/2015 11:27:26 AM
 Modified: 8/18/2015 12:03:02 PM

Electropherogram Summary Continued ...



Overall Results for sample 4 : 15Nlam01 0.53X size sel lib

Number of peaks found: 6 Corr. Area 1: 1,711.9
 Noise: 0.2

Peak table for sample 4 : 15Nlam01 0.53X size sel lib

Peak	Size [bp]	Conc. [pg/μl]	Molarity [pmol/l]	Observations	Aligned Migration Time [s]
1	35	125.00	5,411.3	Lower Marker	43.00
2	341	7.22	32.1		72.80
3	353	6.58	28.3		73.74
4	365	10.89	45.2		74.76
5	562	457.01	1,231.8		86.04
6	615	194.66	479.7		88.25
7	640	457.64	1,082.8		89.03
8	10,380	75.00	10.9	Upper Marker	113.00

Region table for sample 4 : 15Nlam01 0.53X size sel lib

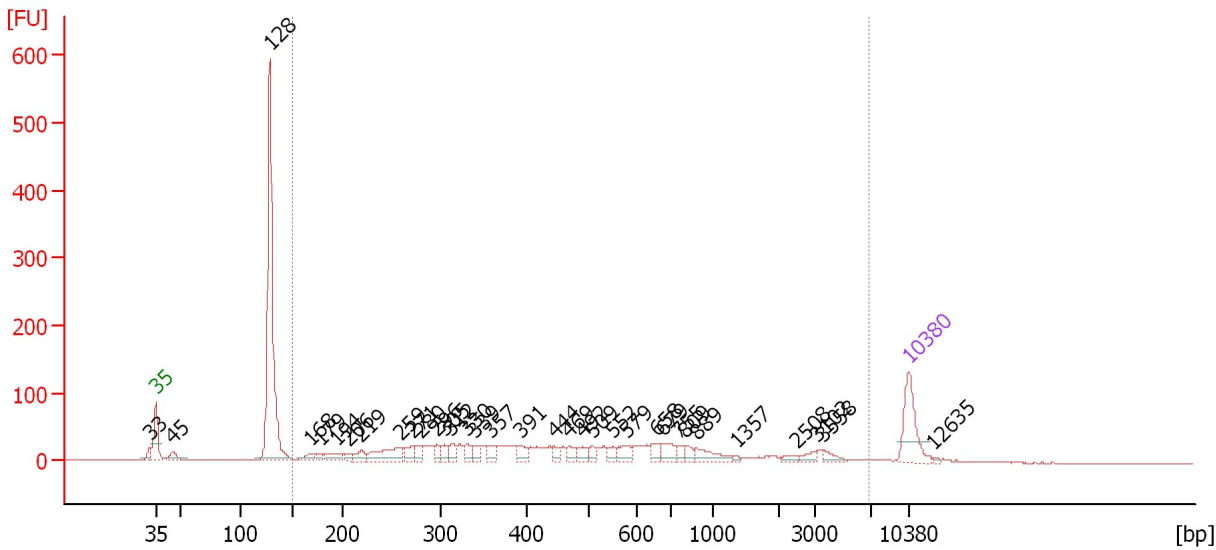
From [bp]	Average Size [bp]	To [bp]	Corr. Area	Molarity [pmol/l]	Co % of Ior Total	Size distribution in CV [%]	Conc. [pg/μl]
200	617	1,794	1,711.9	3,460.7	97	28.2	1,288.92

Assay Class: High Sensitivity DNA Assay
 Data Path: C:\...ents and Settings\Bioanalyzer\2015-08-18\2015-08-18_001.xad

Created: 8/18/2015 11:27:26 AM
 Modified: 8/18/2015 12:03:02 PM

Electropherogram Summary Continued ...

IgG Mouse 1 0.55X size sel lib



Overall Results for sample 5 : IgG Mouse 1 0.55X size sel lib

Number of peaks found: 34 Corr. Area 1: 1,211.2
 Noise: 0.2

Peak table for sample 5 : IgG Mouse 1 0.55X size sel lib

Peak	Size [bp]	Conc. [pg/μl]	Molarity [pmol/l]	Observations	Aligned Migration Time [s]
1	33	0.00	0.0		42.45
2	35	125.00	5,411.3	Lower Marker	43.00
3	45	26.52	891.0		44.54
4	128	642.51	7,587.5		53.57
5	168	18.33	165.7		57.29
6	179	10.32	87.5		58.33
7	194	28.65	223.8		59.77
8	206	9.66	71.2		60.86
9	219	24.32	168.1		62.10
10	259	67.87	396.8		65.77
11	271	23.39	130.7		66.86
12	280	23.26	126.0		67.66
13	296	18.19	93.1		69.14
14	305	17.90	89.0		69.89
15	312	23.44	113.8		70.48
16	330	20.82	95.6		71.92
17	339	18.64	83.4		72.62
18	357	20.50	87.1		74.06
19	391	20.65	80.0		76.83
20	444	14.29	48.8		80.01
21	469	18.75	60.5		81.45
22	492	19.21	59.1		82.74
23	509	11.86	35.3		83.58
24	552	13.56	37.2		85.57
25	579	26.58	69.6		86.81

Assay Class: High Sensitivity DNA Assay
 Data Path: C:\...ents and Settings\Bioanalyzer\2015-08-18\2015-08-18_001.xad

Created: 8/18/2015 11:27:26 AM
 Modified: 8/18/2015 12:03:02 PM

Electropherogram Summary Continued ...

... Peak table for sample 5 : IgG Mouse 1 0.55X size sel lib

Peak	Size [bp]	Conc. [pg/μl]	Molarity [pmol/l]	Observations	Aligned Migration Time [s]
26	658	21.75	50.1		89.58
27	679	26.51	59.1		90.23
28	755	14.03	28.2		91.57
29	809	13.99	26.2		92.26
30	889	31.97	54.5		93.30
31	1,357	3.69	4.1		96.98
32	2,508	7.83	4.7		102.68
33	3,102	11.51	5.6		104.42
34	3,558	12.88	5.5		105.01
35	10,380	75.00	10.9	Upper Marker	113.00
36	12,635	0.00	0.0		115.33

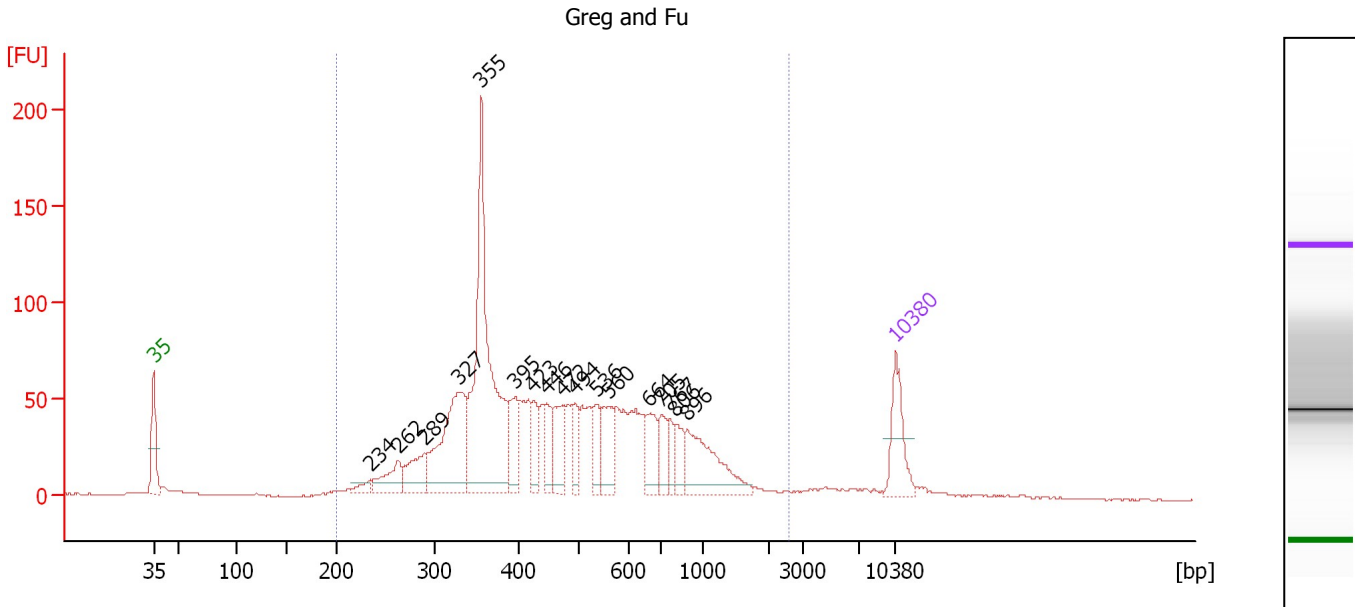
Region table for sample 5 : IgG Mouse 1 0.55X size sel lib

From [bp]	Average Size [bp]	To [bp]	Corr. Area	Molarity [pmol/l]	Co % of lor Total	Size distribution in CV [%]	Conc. [pg/μl]
150	784	6,833	1,211.2	3,573.0	62	100.0	863.05

Assay Class: High Sensitivity DNA Assay
 Data Path: C:\...ents and Settings\Bioanalyzer\2015-08-18\2015-08-18_001.xad

Created: 8/18/2015 11:27:26 AM
 Modified: 8/18/2015 12:03:02 PM

Electropherogram Summary Continued ...



Overall Results for sample 6 : Greg and Fu

Number of peaks found: 17 Corr. Area 1: 1,861.7
 Noise: 0.2

Peak table for sample 6 : Greg and Fu

Peak	Size [bp]	Conc. [pg/μl]	Molarity [pmol/l]	Observations	Aligned Migration Time [s]
1	35	125.00	5,411.3	Lower Marker	43.00
2	234	18.46	119.5		63.47
3	262	67.99	393.1		66.03
4	289	83.67	438.0		68.55
5	327	274.08	1,268.4		71.71
6	355	557.62	2,379.9		73.93
7	395	79.57	305.1		77.15
8	423	54.53	195.1		78.85
9	446	59.60	202.6		80.11
10	472	79.84	256.5		81.57
11	494	50.80	155.9		82.83
12	536	54.39	153.7		84.84
13	560	77.39	209.3		85.95
14	664	69.70	158.9		89.77
15	705	49.23	105.8		90.92
16	767	32.43	64.1		91.73
17	806	42.44	79.8		92.23
18	896	145.03	245.3		93.39
19	10,380	75.00	10.9	Upper Marker	113.00

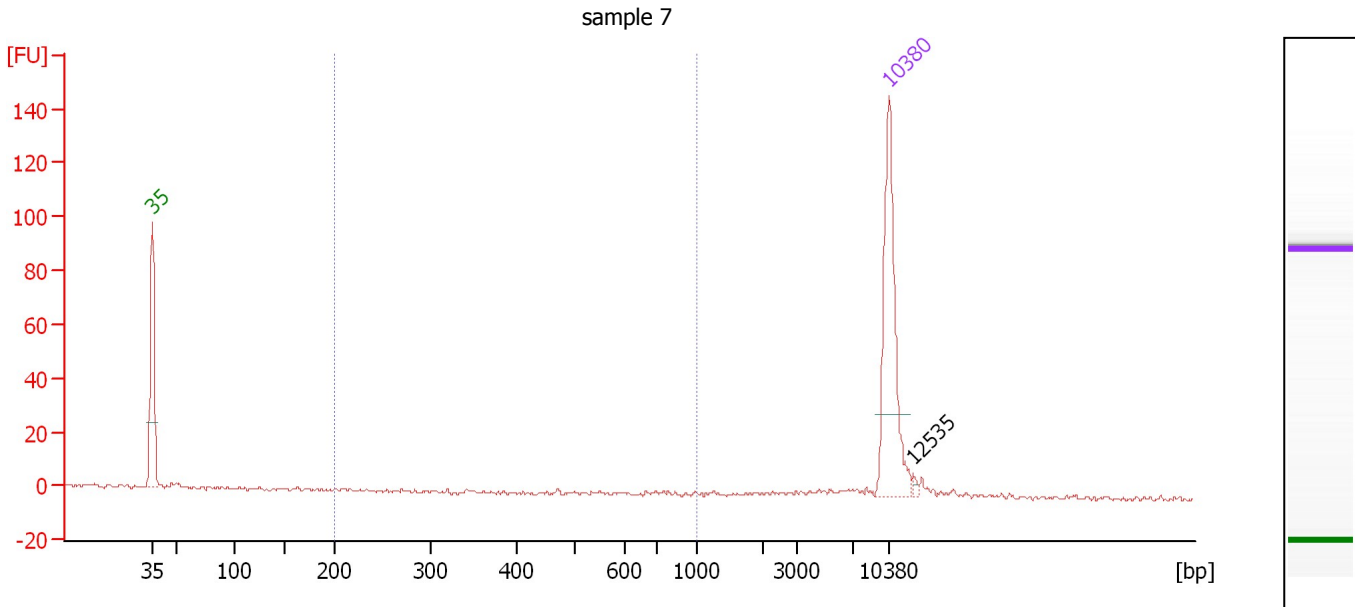
Region table for sample 6 : Greg and Fu

From [bp]	Average Size [bp]	To [bp]	Corr. Area	Molarity [pmol/l]	Co % of Ior Total	Size distribution in CV [%]	Conc. [pg/μl]
200	533	2,599	1,861.7	8,519.0	95	54.4	2,360.98

Assay Class: High Sensitivity DNA Assay
 Data Path: C:\...ents and Settings\Bioanalyzer\2015-08-18\2015-08-18_001.xad

Created: 8/18/2015 11:27:26 AM
 Modified: 8/18/2015 12:03:02 PM

Electropherogram Summary Continued ...



Overall Results for sample 7 : sample 7

Number of peaks found: 1 Corr. Area 1: 8.1
 Noise: 0.6

Peak table for sample 7 : sample 7

Peak	Size [bp]	Conc. [pg/μl]	Molarity [pmol/l]	Observations	Aligned Migration Time [s]
1	35	125.00	5,411.3	Lower Marker	43.00
2	10,380	75.00	10.9	Upper Marker	113.00
3	12,535	0.00	0.0		115.23

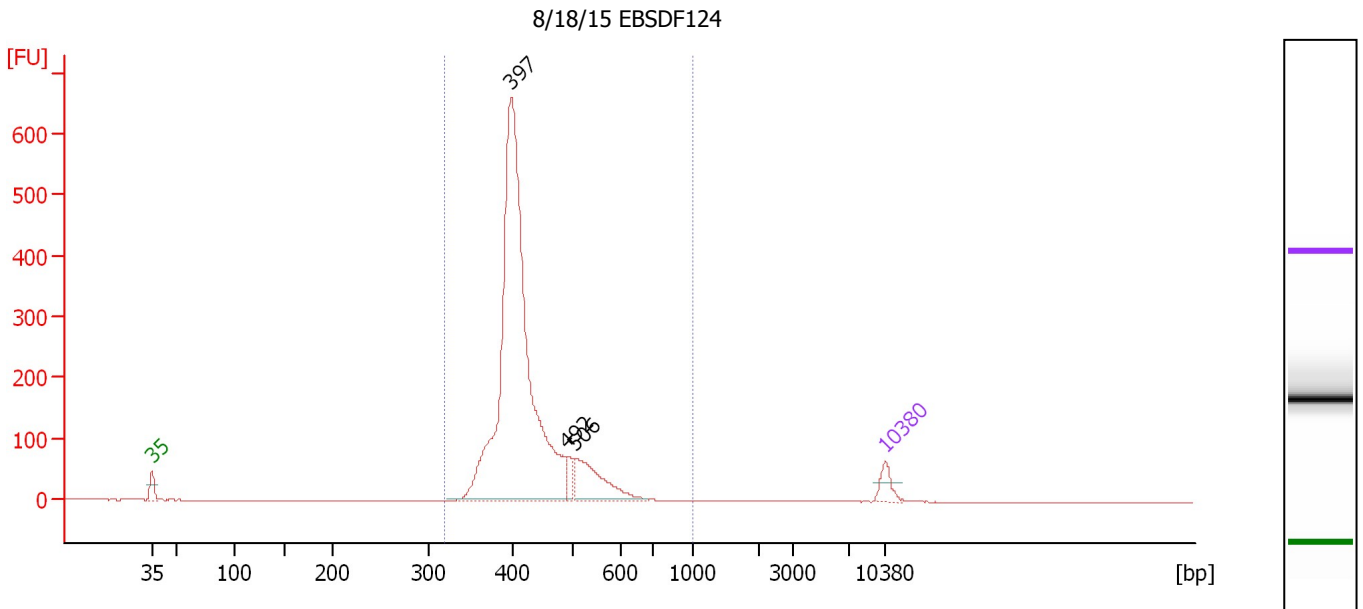
Region table for sample 7 : sample 7

From [bp]	Average Size [bp]	To [bp]	Corr. Area	Molarity [pmol/l]	Co % of Ior Total	Size distribution in CV [%]	Conc. [pg/μl]
200	540	1,000	8.1	20.9	11	42.6	5.36

Assay Class: High Sensitivity DNA Assay
 Data Path: C:\...ents and Settings\Bioanalyzer\2015-08-18\2015-08-18_001.xad

Created: 8/18/2015 11:27:26 AM
 Modified: 8/18/2015 12:03:02 PM

Electropherogram Summary Continued ...



Overall Results for sample 8 : 8/18/15 EBSDF124

Number of peaks found: 3 Corr. Area 1: 2,841.6
 Noise: 0.3

Peak table for sample 8 : 8/18/15 EBSDF124

Peak	Size [bp]	Conc. [pg/μl]	Molarity [pmol/l]	Observations	Aligned Migration Time [s]
1	35	125.00	5,411.3	Lower Marker	43.00
2	397	3,806.77	14,519.7		77.31
3	492	95.16	293.2		82.71
4	506	415.19	1,242.0		83.47
5	10,380	75.00	10.9	Upper Marker	113.00

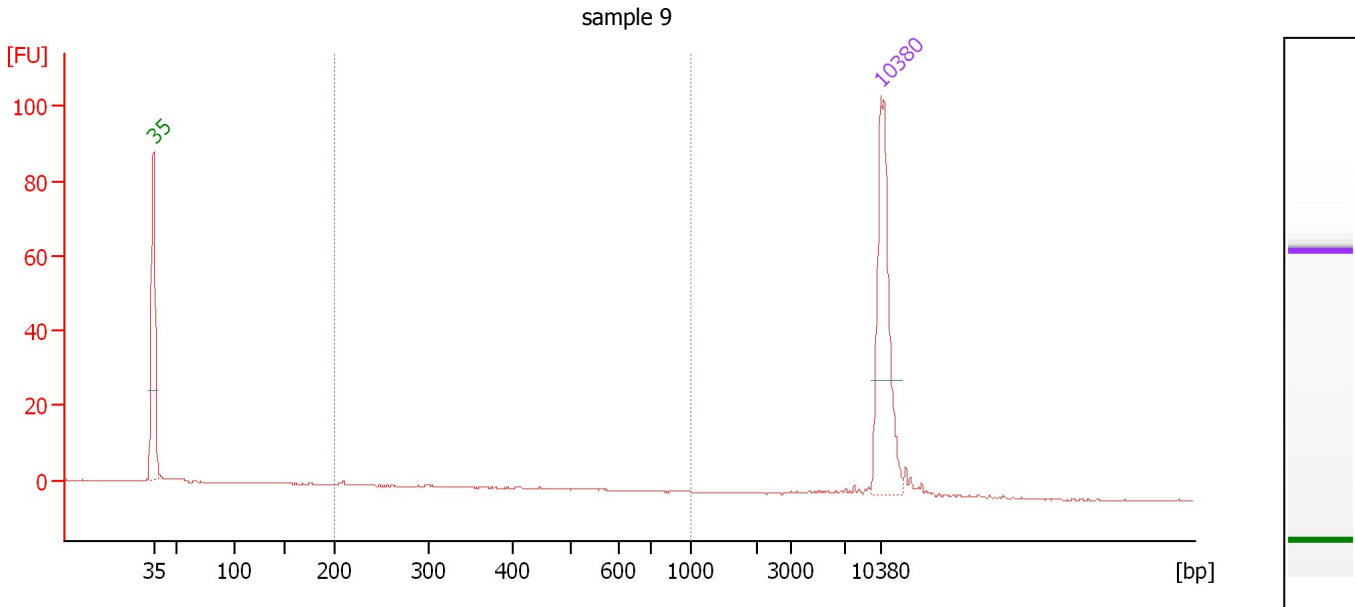
Region table for sample 8 : 8/18/15 EBSDF124

From [bp]	Average Size [bp]	To [bp]	Corr. Area	Molarity [pmol/l]	Co % of lor Total	Size distribution in CV [%]	Conc. [pg/μl]
317	426	1,000	2,841.6	15,477.0	99	13.2	4,277.59

Assay Class: High Sensitivity DNA Assay
 Data Path: C:\...ents and Settings\Bioanalyzer\2015-08-18\2015-08-18_001.xad

Created: 8/18/2015 11:27:26 AM
 Modified: 8/18/2015 12:03:02 PM

Electropherogram Summary Continued ...



Overall Results for sample 9 : sample 9

Number of peaks found: 0 Corr. Area 1: 2.6
 Noise: 0.1

Peak table for sample 9 : sample 9

Peak	Size [bp]	Conc. [pg/μl]	Molarity [pmol/l]	Observations	Aligned Migration Time [s]
1	35	125.00	5,411.3	Lower Marker	43.00
2	10,380	75.00	10.9	Upper Marker	113.00

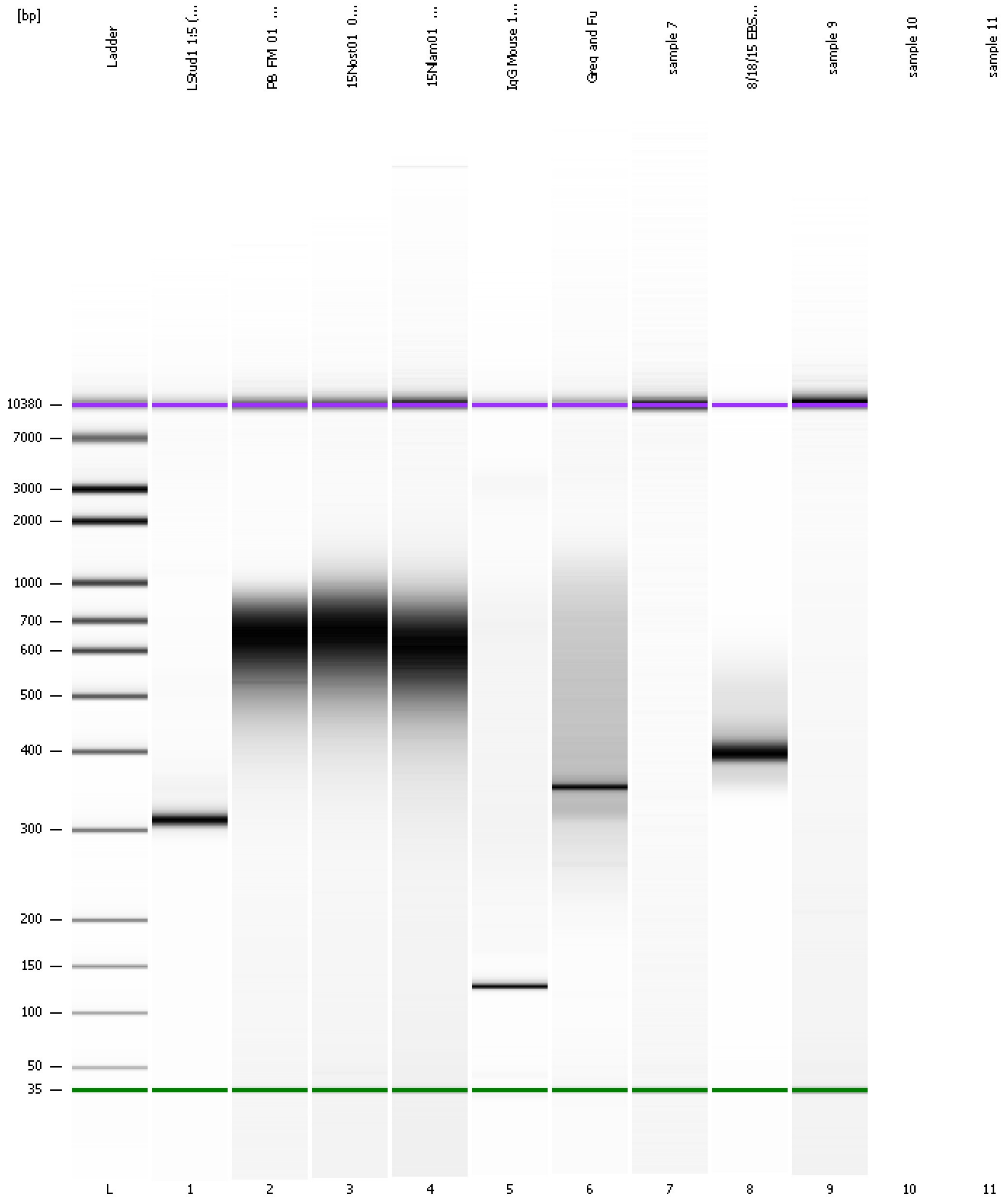
Region table for sample 9 : sample 9

From [bp]	Average Size [bp]	To [bp]	Corr. Area	Molarity [pmol/l]	Co % of Ior Total	Size distribution in CV [%]	Conc. [pg/μl]
200	337	1,000	2.6	14.0	10	51.7	2.52

Assay Class: High Sensitivity DNA Assay
Data Path: C:\...ents and Settings\Bioanalyzer\2015-08-18\2015-08-18_001.xad

Created: 8/18/2015 11:27:26 AM
Modified: 8/18/2015 12:03:02 PM

Gel Image



Assay Class: High Sensitivity DNA Assay
Data Path: C:\...ents and Settings\Bioanalyzer\2015-08-18\2015-08-18_001.xad

Created: 8/18/2015 11:27:26 AM
Modified: 8/18/2015 12:03:02 PM

Invalid Samples

Sample 10 has not been run, no results available.

Sample 11 has not been run, no results available.