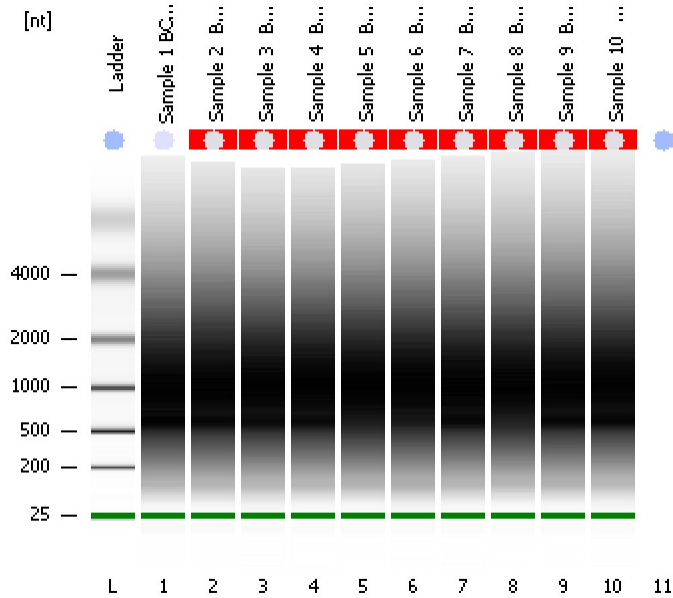


Assay Class: Eukaryote Total RNA Pico
Data Path: C:\...ents and Settings\Bioanalyzer\2015-08-18\2015-08-18_002.xad

Created: 8/18/2015 3:51:25 PM
Modified: 8/18/2015 4:25:59 PM

Electrophoresis File Run Summary



Instrument Information:

Instrument Name: DE13701086 Firmware: C.01.069
Serial#: DE13701086 Type: G2938B

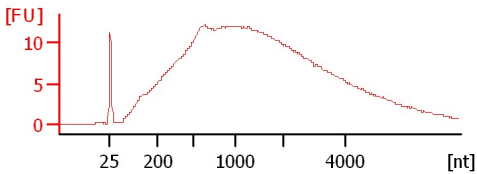
Assay Information:

Assay Origin Path: C:\Program Files\Agilent\2100 bioanalyzer\2100 expert\assays\RNA\Eukaryote Total RNA Pico Series II.xsy
Assay Class: Eukaryote Total RNA Pico
Version: 2.6
Assay Comments: Total RNA Analysis pg sensitivity (Eukaryote)
© Copyright 2003 - 2009 Agilent Technologies, Inc.

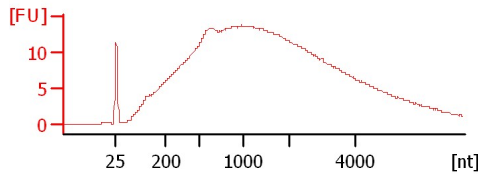
Chip Information:

Chip Lot #:
Reagent Kit Lot #:
Chip Comments:

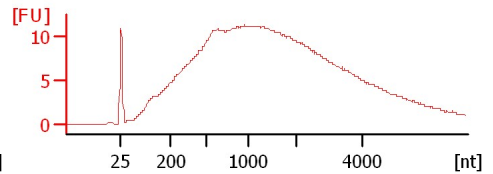
Sample 1 BCSS DNA
HiSeq184: Bisulfite Converted DNA
RIN: 2.20



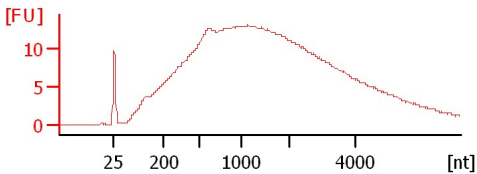
Sample 2 BCSS DNA
HiSeq184: Bisulfite Converted DNA
RIN N/A



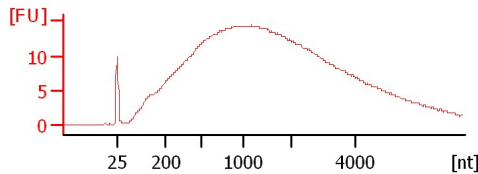
Sample 3 BCSS DNA
HiSeq184: Bisulfite Converted DNA
RIN N/A



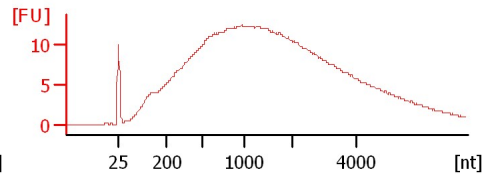
Sample 4 BCSS DNA
HiSeq184: Bisulfite Converted DNA
RIN N/A



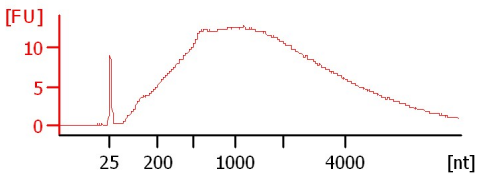
Sample 5 BCSS DNA
HiSeq184: Bisulfite Converted DNA
RIN N/A



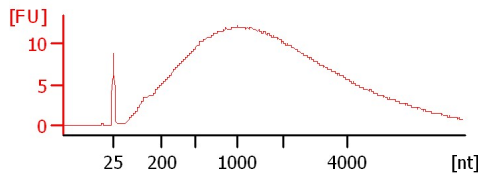
Sample 6 BCSS DNA
HiSeq184: Bisulfite Converted DNA
RIN N/A



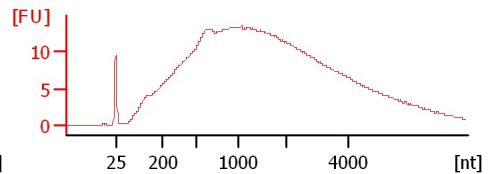
Sample 7 BCSS DNA
HiSeq184: Bisulfite Converted DNA
RIN N/A



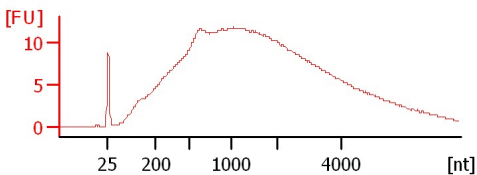
Sample 8 BCSS DNA
HiSeq184: Bisulfite Converted DNA
RIN N/A



Sample 9 BCSS DNA
HiSeq184: Bisulfite Converted DNA
RIN N/A



Sample 10 BCSS DNA
HiSeq184: Bisulfite Converted DNA
RIN N/A



Assay Class: Eukaryote Total RNA Pico
Data Path: C:\...ents and Settings\Bioanalyzer\2015-08-18\2015-08-18_002.xad

Created: 8/18/2015 3:51:25 PM
Modified: 8/18/2015 4:25:59 PM

Electrophoresis File Run Summary (Chip Summary)

Sample Name	Sample Comment	Status	Result Label	Result Color
Sample 1 BCSS DNA	HiSeq184: Bisulfite Converted DNA	✓	RIN: 2.20	
Sample 2 BCSS DNA	HiSeq184: Bisulfite Converted DNA	✓	RIN N/A	
Sample 3 BCSS DNA	HiSeq184: Bisulfite Converted DNA	✓	RIN N/A	
Sample 4 BCSS DNA	HiSeq184: Bisulfite Converted DNA	✓	RIN N/A	
Sample 5 BCSS DNA	HiSeq184: Bisulfite Converted DNA	✓	RIN N/A	
Sample 6 BCSS DNA	HiSeq184: Bisulfite Converted DNA	✓	RIN N/A	
Sample 7 BCSS DNA	HiSeq184: Bisulfite Converted DNA	✓	RIN N/A	
Sample 8 BCSS DNA	HiSeq184: Bisulfite Converted DNA	✓	RIN N/A	
Sample 9 BCSS DNA	HiSeq184: Bisulfite Converted DNA	✓	RIN N/A	
Sample 10 BCSS DNA	HiSeq184: Bisulfite Converted DNA	✓	RIN N/A	
Ladder		✓	All Other Samples	

Chip Lot #

Reagent Kit Lot #

Chip Comments :

Assay Class: Eukaryote Total RNA Pico
Data Path: C:\...ents and Settings\Bioanalyzer\2015-08-18\2015-08-18_002.xad

Created: 8/18/2015 3:51:25 PM
Modified: 8/18/2015 4:25:59 PM

Electrophoresis Assay Details

General Analysis Settings

Number of Available Sample and Ladder Wells (Max.) : 12
Minimum Visible Range [s] : 17
Maximum Visible Range [s] : 70
Start Analysis Time Range [s] : 18
End Analysis Time Range [s] : 69
Ladder Concentration [pg/μl] : 1000
Lower Marker Concentration [pg/μl] : 0
Upper Marker Concentration [pg/μl] : 0
Used Lower Marker for Quantitation
Standard Curve Fit is Logarithmic
Show Data Aligned to Lower Marker

Integrator Settings

Integration Start Time [s] : 18
Integration End Time [s] : 69
Slope Threshold : 0.6
Height Threshold [FU] : 0.5
Area Threshold : 0.2
Width Threshold [s] : 0.3
Baseline Plateau [s] : 6

Filter Settings

Filter Width [s] : 0.5
Polynomial Order : 4

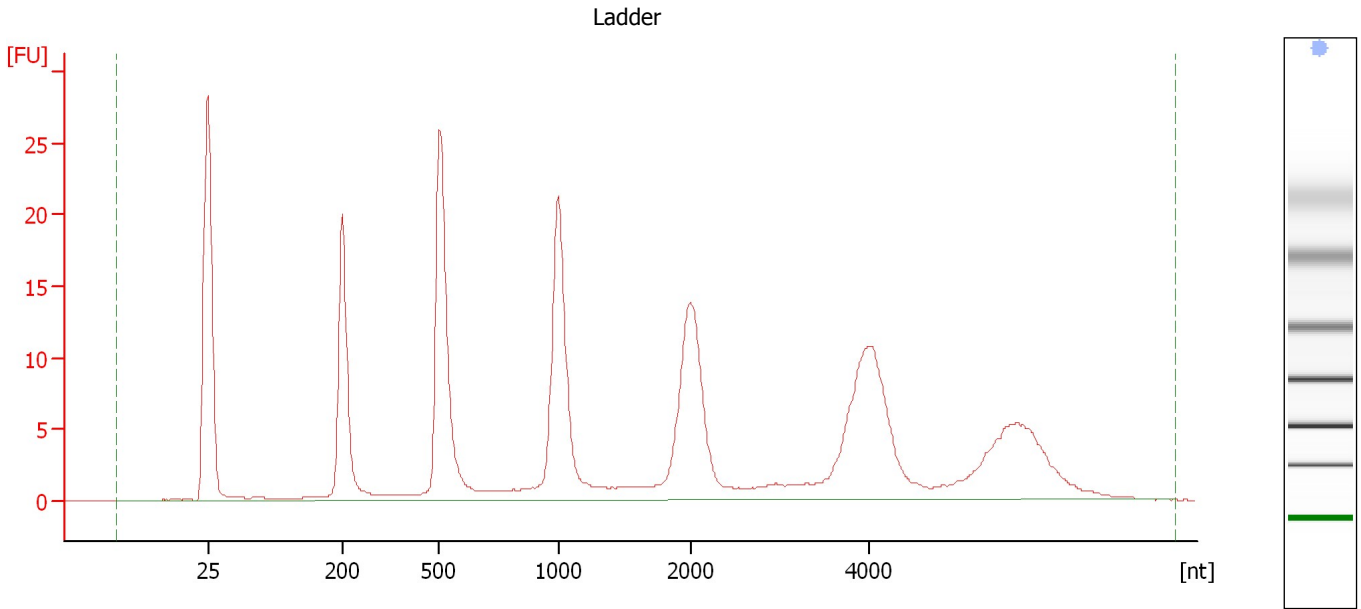
Ladder

Ladder Peak	Size
1	25
2	200
3	500
4	1000
5	2000
6	4000

Assay Class: Eukaryote Total RNA Pico
Data Path: C:\...ents and Settings\Bioanalyzer\2015-08-18\2015-08-18_002.xad

Created: 8/18/2015 3:51:25 PM
Modified: 8/18/2015 4:25:59 PM

Electropherogram Summary



Overall Results for Ladder

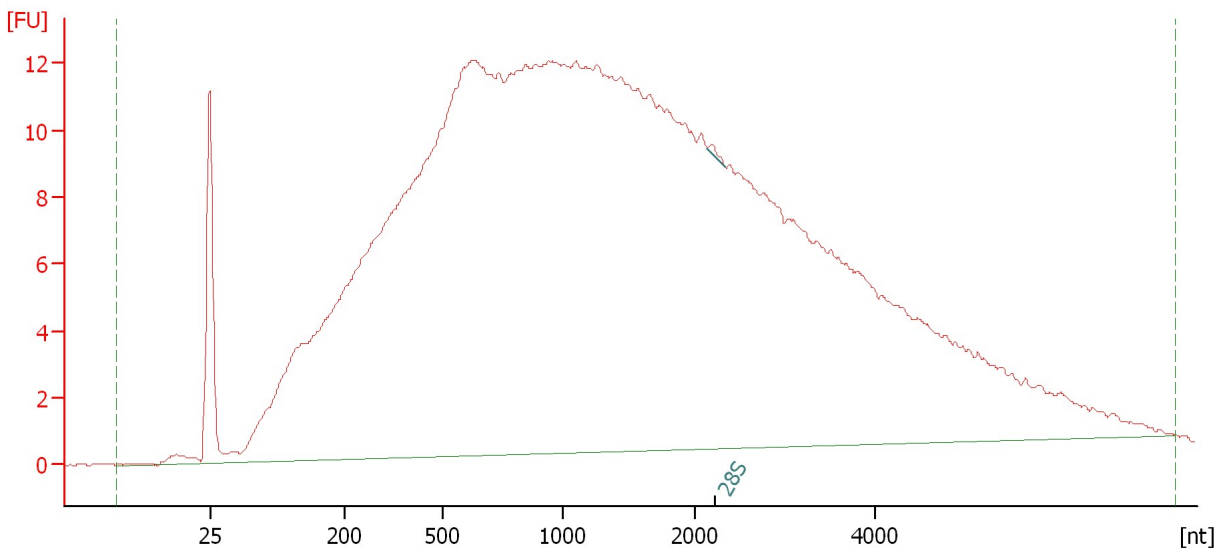
RNA Area:	262.6	Result Flagging Color:	
RNA Concentration:	1,000 pg/ μ l	Result Flagging Label:	All Other Samples

Assay Class: Eukaryote Total RNA Pico
Data Path: C:\...ents and Settings\Bioanalyzer\2015-08-18\2015-08-18_002.xad

Created: 8/18/2015 3:51:25 PM
Modified: 8/18/2015 4:25:59 PM

Electropherogram Summary Continued ...

Sample 1 BCSS DNA [HiSeq184: Bisulfite Converted DNA]



Overall Results for sample 1 : Sample 1 BCSS DNA

RNA Area:	641.7	RNA Integrity Number (RIN):	2.2 (B.02.08)
RNA Concentration:	2,443 pg/μl	Result Flagging Color:	
rRNA Ratio [28s / 18s]:	0.0	Result Flagging Label:	RIN: 2.20

Fragment table for sample 1 : Sample 1 BCSS DNA

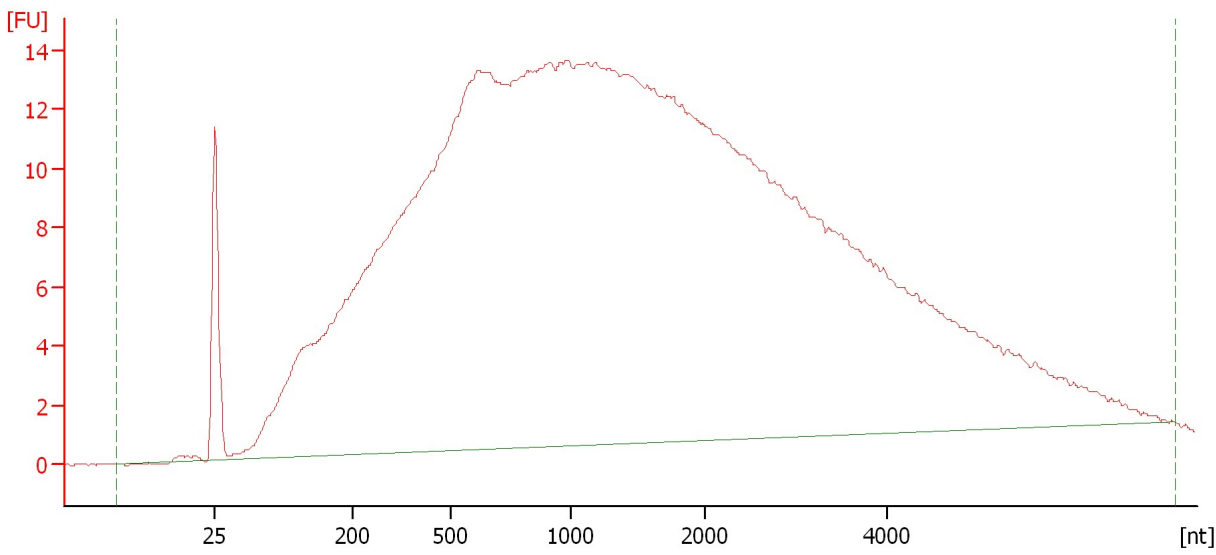
Name	Start Size [nt]	End Size [nt]	Area	% of total Area
28S	2,144	2,335	0.3	0.0

Assay Class: Eukaryote Total RNA Pico
Data Path: C:\...ents and Settings\Bioanalyzer\2015-08-18\2015-08-18_002.xad


Created: 8/18/2015 3:51:25 PM
Modified: 8/18/2015 4:25:59 PM

Electropherogram Summary Continued ...

Sample 2 BCSS DNA [HiSeq184: Bisulfite Converted DNA]



Overall Results for sample 2 : Sample 2 BCSS DNA

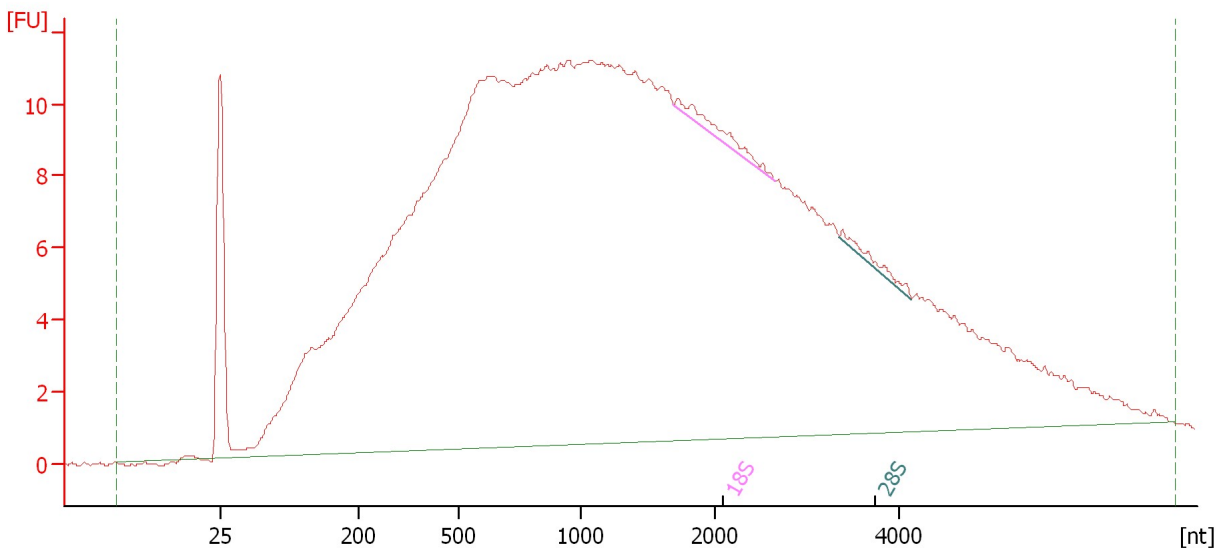
RNA Area:	711.0	RNA Integrity Number (RIN):	N/A (B.02.08)
RNA Concentration:	2,707 pg/μl	Result Flagging Color:	
rRNA Ratio [28s / 18s]:	0.0	Result Flagging Label:	RIN N/A

Assay Class: Eukaryote Total RNA Pico
Data Path: C:\...ents and Settings\Bioanalyzer\2015-08-18\2015-08-18_002.xad

Created: 8/18/2015 3:51:25 PM
Modified: 8/18/2015 4:25:59 PM

Electropherogram Summary Continued ...

Sample 3 BCSS DNA [HiSeq184: Bisulfite Converted DNA]



Overall Results for sample 3 : Sample 3 BCSS DNA

RNA Area:	574.7	RNA Integrity Number (RIN):	N/A (B.02.08)
RNA Concentration:	2,188 pg/μl	Result Flagging Color:	
rRNA Ratio [28s / 18s]:	0.4	Result Flagging Label:	RIN N/A

Fragment table for sample 3 : Sample 3 BCSS DNA

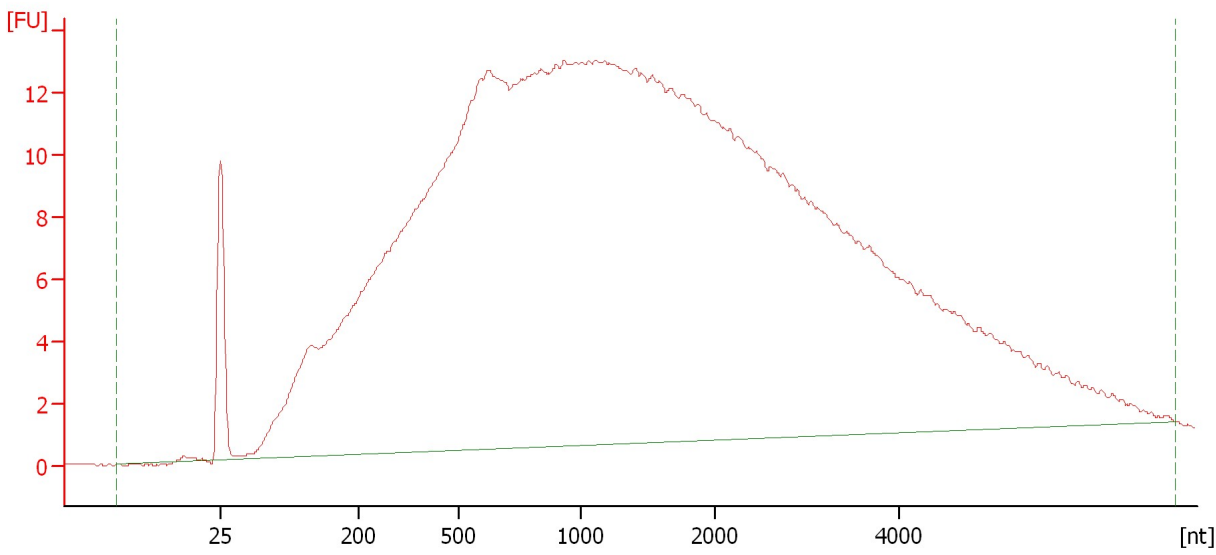
Name	Start Size [nt]	End Size [nt]	Area	% of total Area
18S	1,689	2,637	2.4	0.4
28S	3,350	4,144	1.0	0.2

Assay Class: Eukaryote Total RNA Pico
Data Path: C:\...ents and Settings\Bioanalyzer\2015-08-18\2015-08-18_002.xad

Created: 8/18/2015 3:51:25 PM
Modified: 8/18/2015 4:25:59 PM

Electropherogram Summary Continued ...

Sample 4 BCSS DNA [HiSeq184: Bisulfite Converted DNA]



Overall Results for sample 4 : Sample 4 BCSS DNA

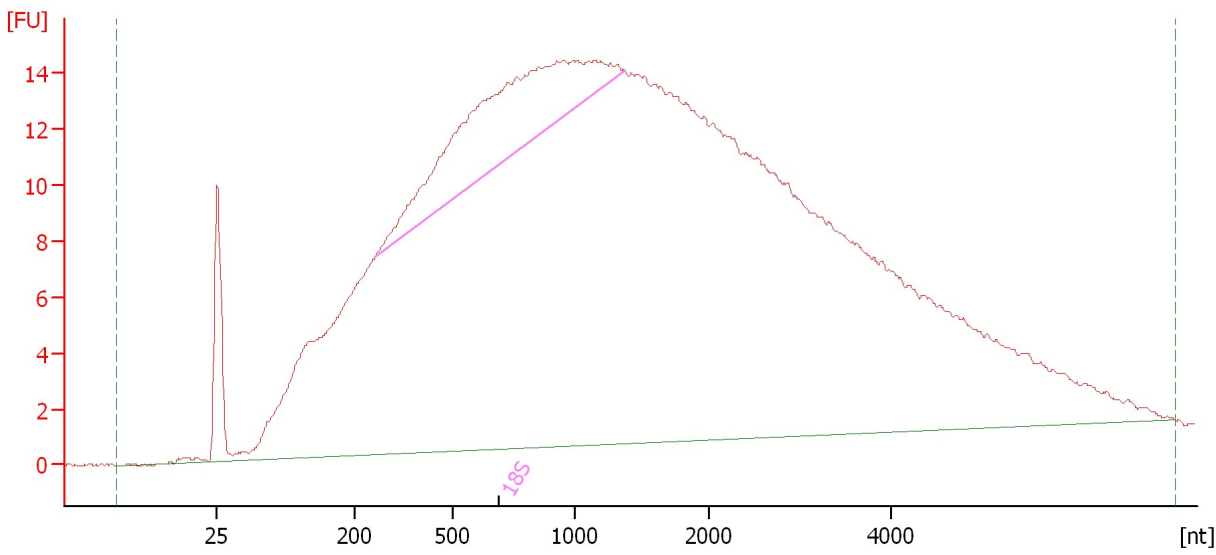
RNA Area:	672.7	RNA Integrity Number (RIN):	N/A (B.02.08)
RNA Concentration:	2,561 pg/μl	Result Flagging Color:	
rRNA Ratio [28s / 18s]:	0.0	Result Flagging Label:	RIN N/A

Assay Class: Eukaryote Total RNA Pico
Data Path: C:\...ents and Settings\Bioanalyzer\2015-08-18\2015-08-18_002.xad

Created: 8/18/2015 3:51:25 PM
Modified: 8/18/2015 4:25:59 PM

Electropherogram Summary Continued ...

Sample 5 BCSS DNA [HiSeq184: Bisulfite Converted DNA]



Overall Results for sample 5 : Sample 5 BCSS DNA

RNA Area:	747.6	RNA Integrity Number (RIN):	N/A (B.02.08)
RNA Concentration:	2,846 µg/µl	Result Flagging Color:	
rRNA Ratio [28s / 18s]:	0.0	Result Flagging Label:	RIN N/A

Fragment table for sample 5 : Sample 5 BCSS DNA

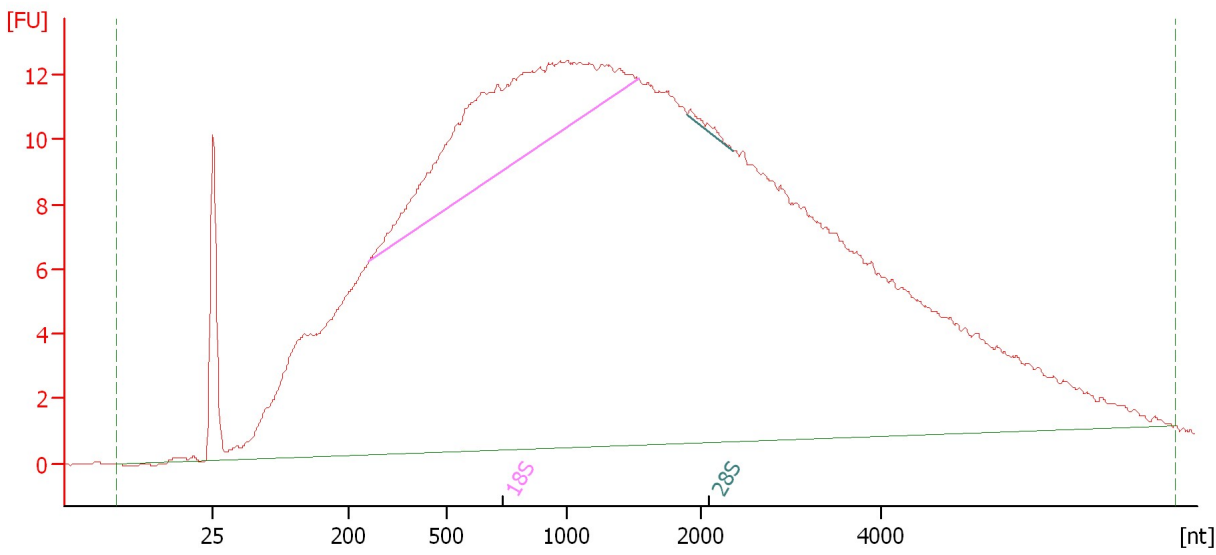
Name	Start Size [nt]	End Size [nt]	Area	% of total Area
18S	263	1,370	52.4	7.0

Assay Class: Eukaryote Total RNA Pico
 Data Path: C:\...ents and Settings\Bioanalyzer\2015-08-18\2015-08-18_002.xad

Created: 8/18/2015 3:51:25 PM
 Modified: 8/18/2015 4:25:59 PM

Electropherogram Summary Continued ...

Sample 6 BCSS DNA [HiSeq184: Bisulfite Converted DNA]



Overall Results for sample 6 : Sample 6 BCSS DNA

RNA Area:	657.3	RNA Integrity Number (RIN):	N/A (B.02.08)
RNA Concentration:	2,503 pg/μl	Result Flagging Color:	
rRNA Ratio [28s / 18s]:	0.0	Result Flagging Label:	RIN N/A

Fragment table for sample 6 : Sample 6 BCSS DNA

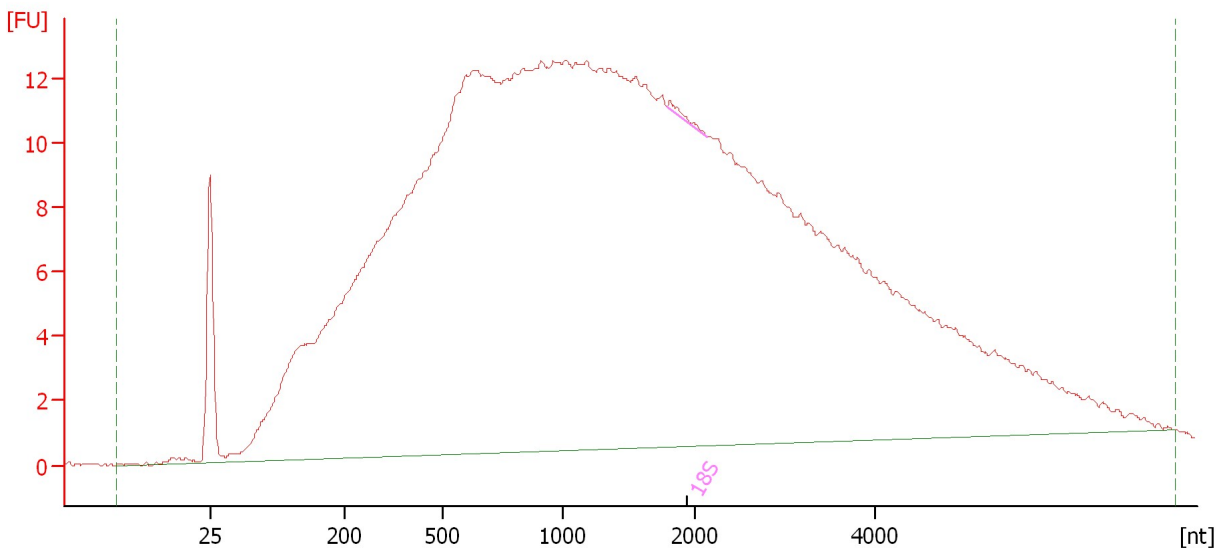
Name	Start Size [nt]	End Size [nt]	Area	% of total Area
18S	259	1,531	55.8	8.5
28S	1,898	2,346	0.7	0.1

Assay Class: Eukaryote Total RNA Pico
 Data Path: C:\...ents and Settings\Bioanalyzer\2015-08-18\2015-08-18_002.xad

Created: 8/18/2015 3:51:25 PM
 Modified: 8/18/2015 4:25:59 PM

Electropherogram Summary Continued ...

Sample 7 BCSS DNA [HiSeq184: Bisulfite Converted DNA]



Overall Results for sample 7 : Sample 7 BCSS DNA

RNA Area:	663.7	RNA Integrity Number (RIN):	N/A (B.02.08)
RNA Concentration:	2,527 pg/μl	Result Flagging Color:	
rRNA Ratio [28s / 18s]:	0.0	Result Flagging Label:	RIN N/A

Fragment table for sample 7 : Sample 7 BCSS DNA

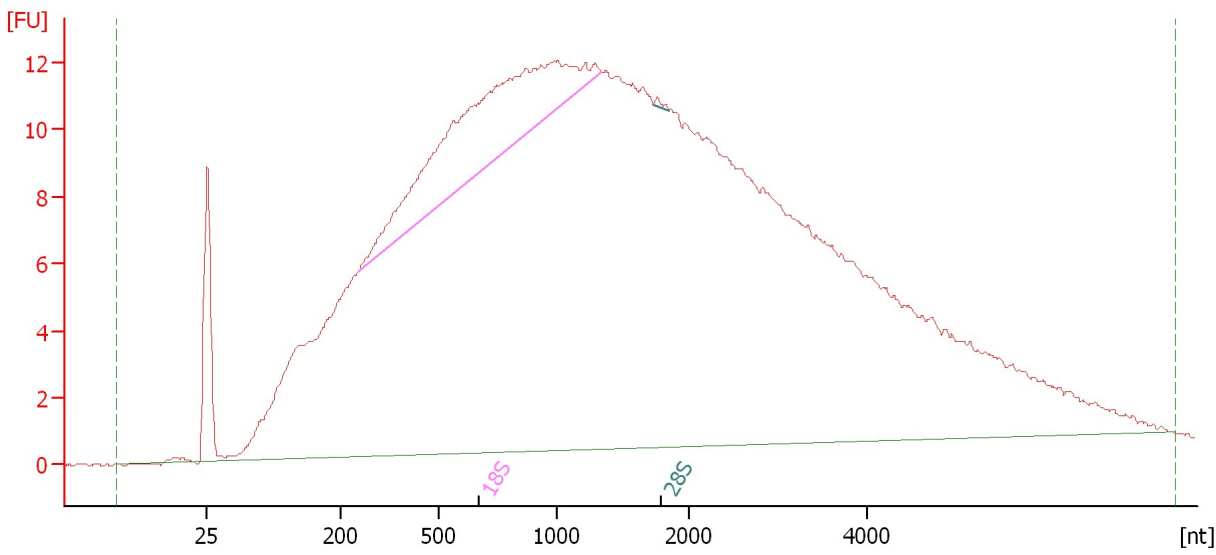
Name	Start Size [nt]	End Size [nt]	Area	% of total Area
18S	1,791	2,132	0.5	0.1

Assay Class: Eukaryote Total RNA Pico
Data Path: C:\...ents and Settings\Bioanalyzer\2015-08-18\2015-08-18_002.xad

Created: 8/18/2015 3:51:25 PM
Modified: 8/18/2015 4:25:59 PM

Electropherogram Summary Continued ...

Sample 8 BCSS DNA [HiSeq184: Bisulfite Converted DNA]



Overall Results for sample 8 : Sample 8 BCSS DNA

RNA Area: 629.8 RNA Integrity Number (RIN): N/A (B.02.08)
RNA Concentration: 2,398 pg/μl Result Flagging Color:
rRNA Ratio [28s / 18s]: 0.0 Result Flagging Label: RIN N/A

Fragment table for sample 8 : Sample 8 BCSS DNA

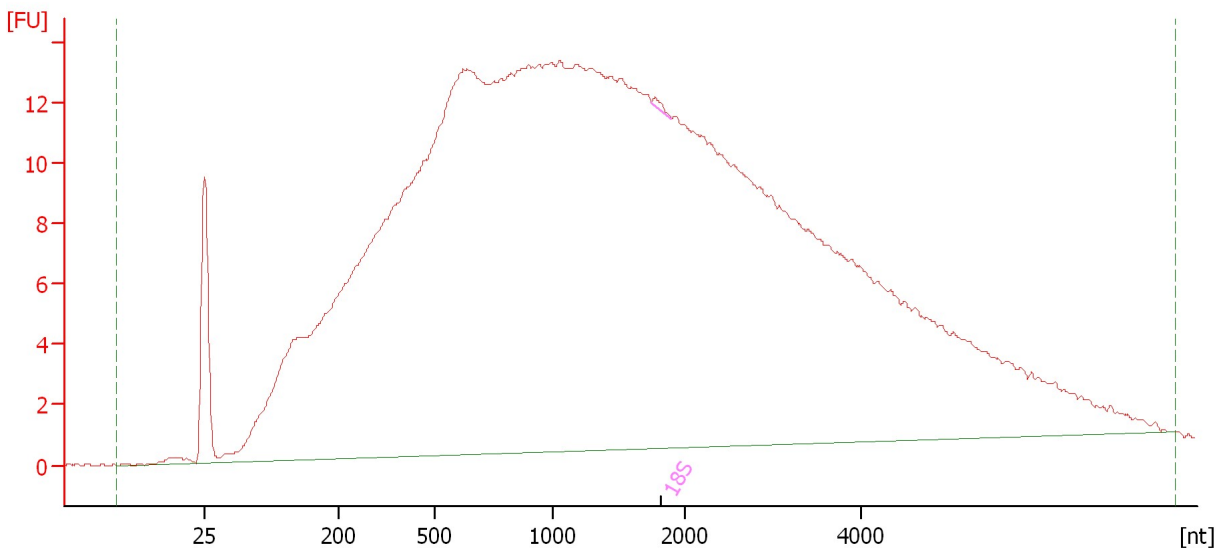
Name	Start Size [nt]	End Size [nt]	Area	% of total Area
18S	253	1,336	43.3	6.9
28S	1,732	1,854	0.2	0.0

Assay Class: Eukaryote Total RNA Pico
Data Path: C:\...ents and Settings\Bioanalyzer\2015-08-18\2015-08-18_002.xad

Created: 8/18/2015 3:51:25 PM
Modified: 8/18/2015 4:25:59 PM

Electropherogram Summary Continued ...

Sample 9 BCSS DNA [HiSeq184: Bisulfite Converted DNA]



Overall Results for sample 9 : Sample 9 BCSS DNA

RNA Area:	715.3	RNA Integrity Number (RIN):	N/A (B.02.08)
RNA Concentration:	2,724 pg/μl	Result Flagging Color:	
rRNA Ratio [28s / 18s]:	0.0	Result Flagging Label:	RIN N/A

Fragment table for sample 9 : Sample 9 BCSS DNA

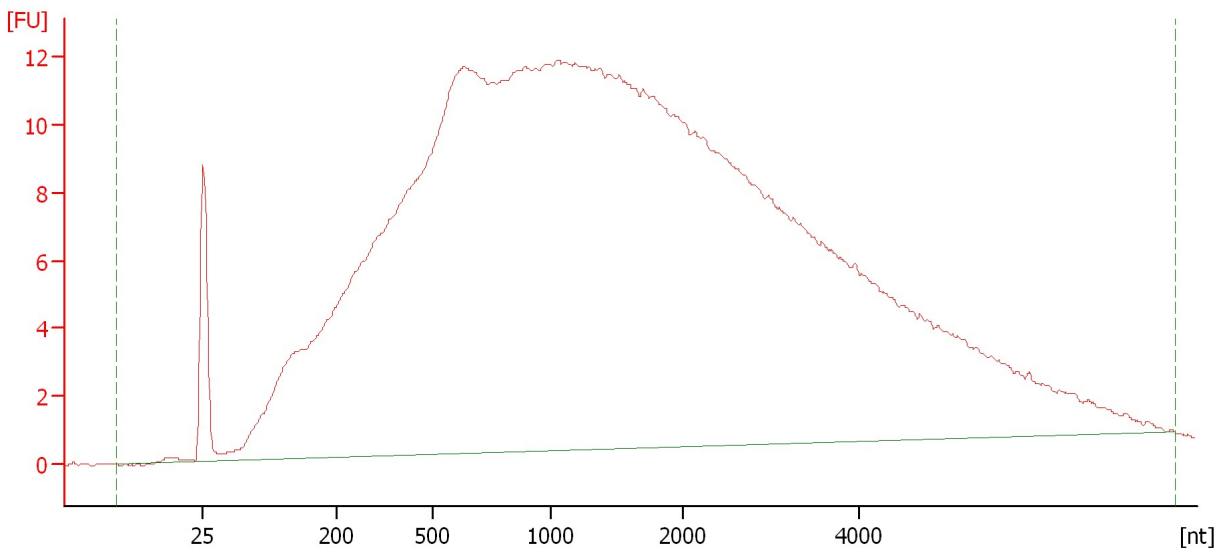
Name	Start Size [nt]	End Size [nt]	Area	% of total Area
18S	1,747	1,901	0.4	0.0

Assay Class: Eukaryote Total RNA Pico
Data Path: C:\...ents and Settings\Bioanalyzer\2015-08-18\2015-08-18_002.xad

Created: 8/18/2015 3:51:25 PM
Modified: 8/18/2015 4:25:59 PM

Electropherogram Summary Continued ...

Sample 10 BCSS DNA [HiSeq184: Bisulfite Converted DNA]



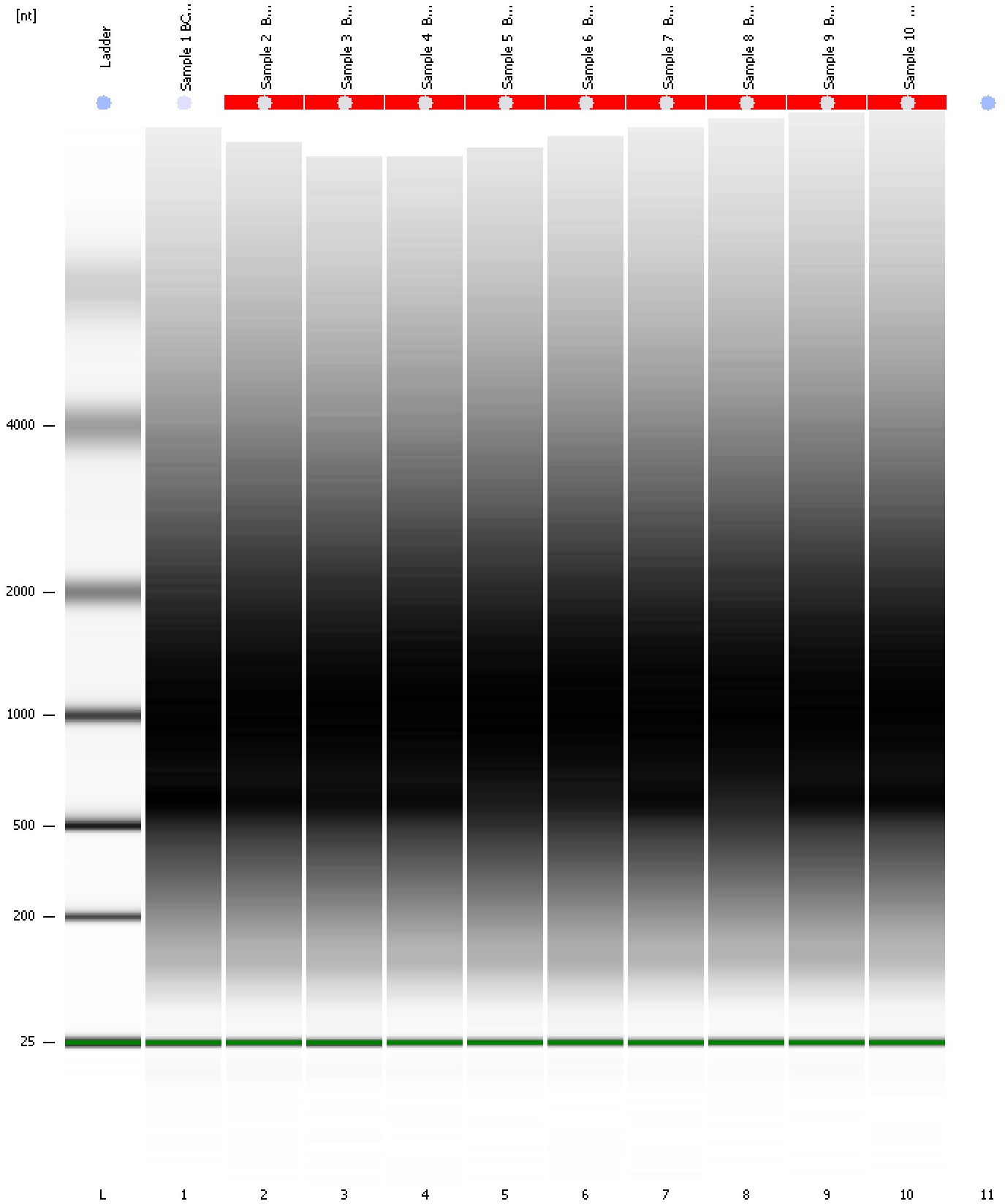
Overall Results for sample 10 : Sample 10 BCSS DNA

RNA Area:	628.8	RNA Integrity Number (RIN):	N/A (B.02.08)
RNA Concentration:	2,394 pg/μl	Result Flagging Color:	
rRNA Ratio [28s / 18s]:	0.0	Result Flagging Label:	RIN N/A

Assay Class: Eukaryote Total RNA Pico
Data Path: C:\...ents and Settings\Bioanalyzer\2015-08-18\2015-08-18_002.xad

Created: 8/18/2015 3:51:25 PM
Modified: 8/18/2015 4:25:59 PM

Gel Image



Assay Class: Eukaryote Total RNA Pico
Data Path: C:\...ents and Settings\Bioanalyzer\2015-08-18\2015-08-18_002.xad

Created: 8/18/2015 3:51:25 PM
Modified: 8/18/2015 4:25:59 PM

Invalid Samples

Sample 11 has not been run, no results available.