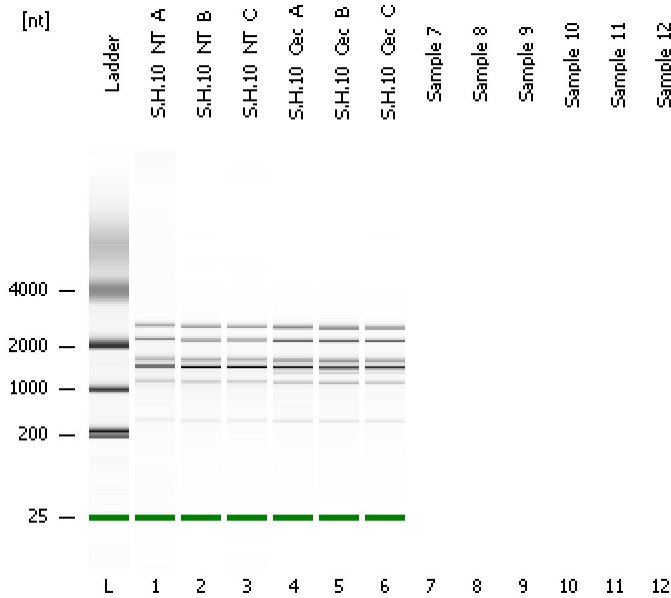


Assay Class: Prokaryote Total RNA Nano
Data Path: C:\...ents and Settings\Bioanalyzer\2015-08-25\2015-08-25_005.xad

Created: 8/25/2015 4:19:45 PM
Modified: 8/25/2015 4:34:56 PM

Electrophoresis File Run Summary



Instrument Information:

Instrument Name: DE13701086 Firmware: C.01.069
Serial#: DE13701086 Type: G2938B

Assay Information:

Assay Origin Path: C:\Program Files\Agilent\2100 bioanalyzer\2100 expert\assays\RNA\Prokaryote Total RNA Nano Series II.xsy

Assay Class: Prokaryote Total RNA Nano

Version: 2.5

Assay Comments: Total RNA Analysis ng sensitivity (Prokaryote)

© Copyright 2003 - 2009 Agilent Technologies, Inc.

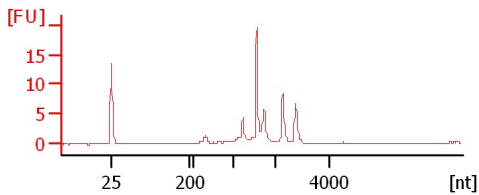
Chip Information:

Chip Lot #:

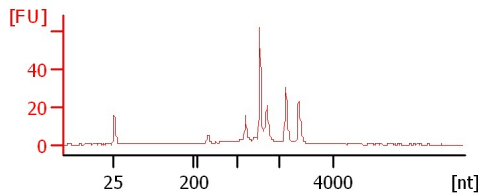
Reagent Kit Lot #:

Chip Comments:

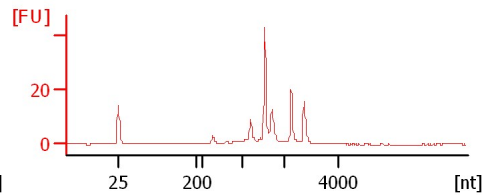
S.H.10_NT_A



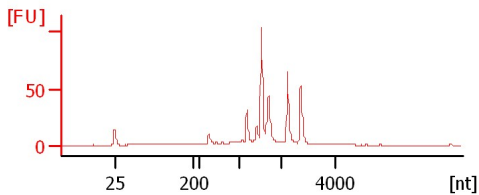
S.H.10_NT_B



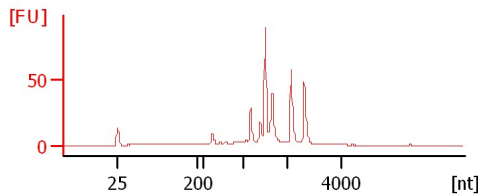
S.H.10_NT_C



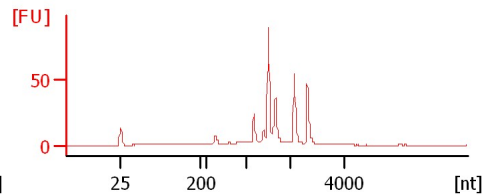
S.H.10_Cec_A



S.H.10_Cec_B



S.H.10_Cec_C



Assay Class: Prokaryote Total RNA Nano
Data Path: C:\...ents and Settings\Bioanalyzer\2015-08-25\2015-08-25_005.xad

Created: 8/25/2015 4:19:45 PM
Modified: 8/25/2015 4:34:56 PM

Electrophoresis File Run Summary (Chip Summary)

Sample Name	Sample Comment	Status	Result Label	Result Color
S.H.10_NT_A		✓		
S.H.10_NT_B		✓		
S.H.10_NT_C		✓		
S.H.10_Cec_A		✓		
S.H.10_Cec_B		✓		
S.H.10_Cec_C		✓		
Sample 7				
Sample 8				
Sample 9				
Sample 10				
Sample 11				
Sample 12				
Ladder		✓		

Chip Lot #**Reagent Kit Lot #****Chip Comments :**

Assay Class: Prokaryote Total RNA Nano
Data Path: C:\...ents and Settings\Bioanalyzer\2015-08-25\2015-08-25_005.xad

Created: 8/25/2015 4:19:45 PM
Modified: 8/25/2015 4:34:56 PM

Electrophoresis Assay Details

General Analysis Settings

Number of Available Sample and Ladder Wells (Max.) : 13
Minimum Visible Range [s] : 17
Maximum Visible Range [s] : 70
Start Analysis Time Range [s] : 19
End Analysis Time Range [s] : 69
Ladder Concentration [ng/μl] : 150
Lower Marker Concentration [ng/μl] : 0
Upper Marker Concentration [ng/μl] : 0
Used Lower Marker for Quantitation
Standard Curve Fit is Logarithmic
Show Data Aligned to Lower Marker

Integrator Settings

Integration Start Time [s] : 19
Integration End Time [s] : 69
Slope Threshold : 0.6
Height Threshold [FU] : 0.5
Area Threshold : 0.2
Width Threshold [s] : 0.5
Baseline Plateau [s] : 6

Filter Settings

Filter Width [s] : 0.5
Polynomial Order : 4

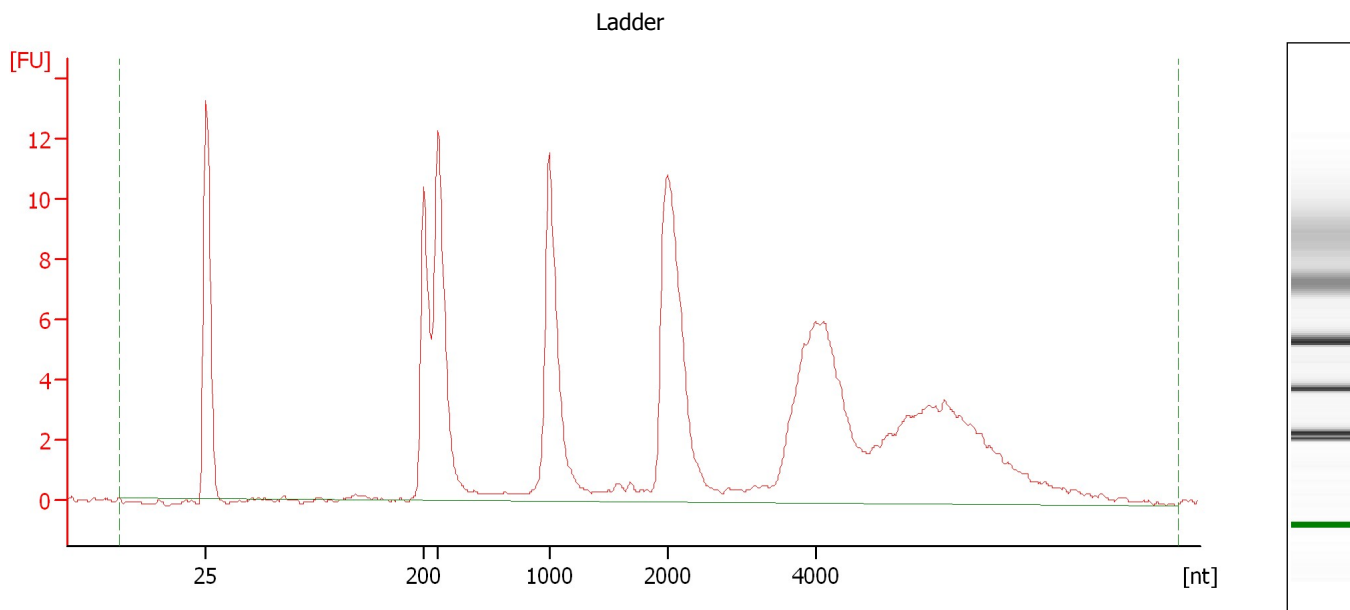
Ladder

Ladder Peak	Size
1	25
2	200
3	500
4	1000
5	2000
6	4000

Assay Class: Prokaryote Total RNA Nano
Data Path: C:\...ents and Settings\Bioanalyzer\2015-08-25\2015-08-25_005.xad

Created: 8/25/2015 4:19:45 PM
Modified: 8/25/2015 4:34:56 PM

Electropherogram Summary



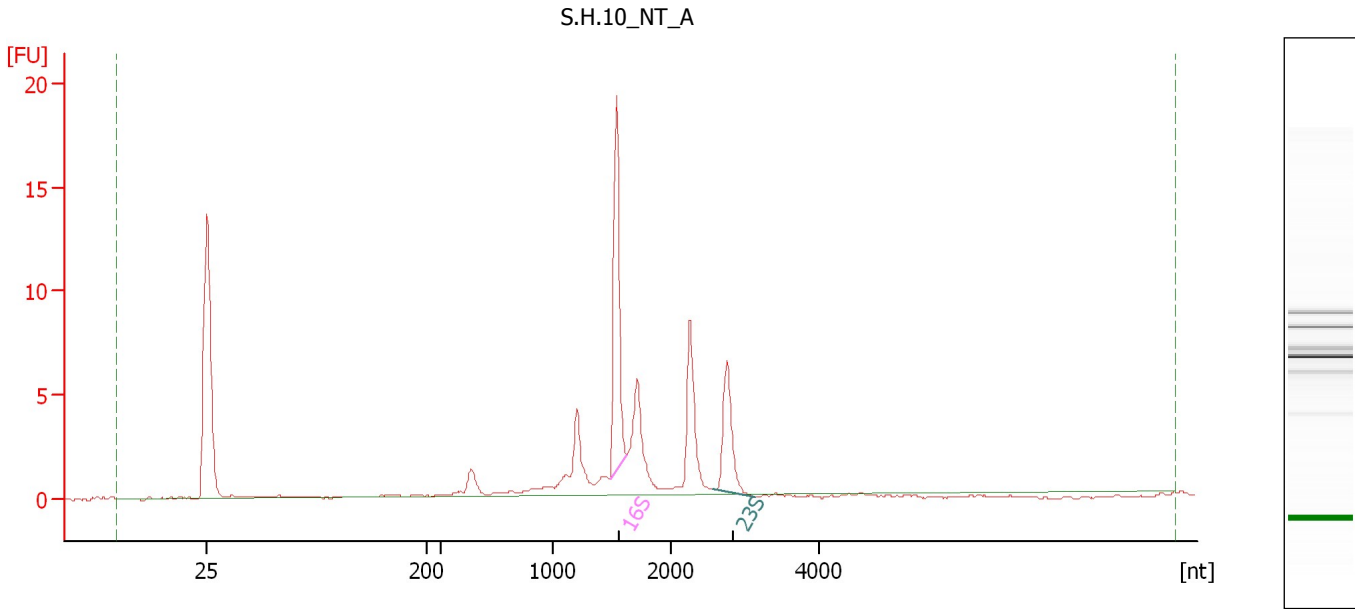
Overall Results for Ladder

RNA Area: 154.5 RNA Concentration: 150 ng/μl

Assay Class: Prokaryote Total RNA Nano
Data Path: C:\...ents and Settings\Bioanalyzer\2015-08-25\2015-08-25_005.xad

Created: 8/25/2015 4:19:45 PM
Modified: 8/25/2015 4:34:56 PM

Electropherogram Summary Continued ...



Overall Results for sample 1 : S.H.10 NT A

RNA Area: 50.3 rRNA Ratio [23s / 16s]: 0.5
RNA Concentration: 49 ng/μl RNA Integrity Number (RIN): 7.4 (B.02.08)

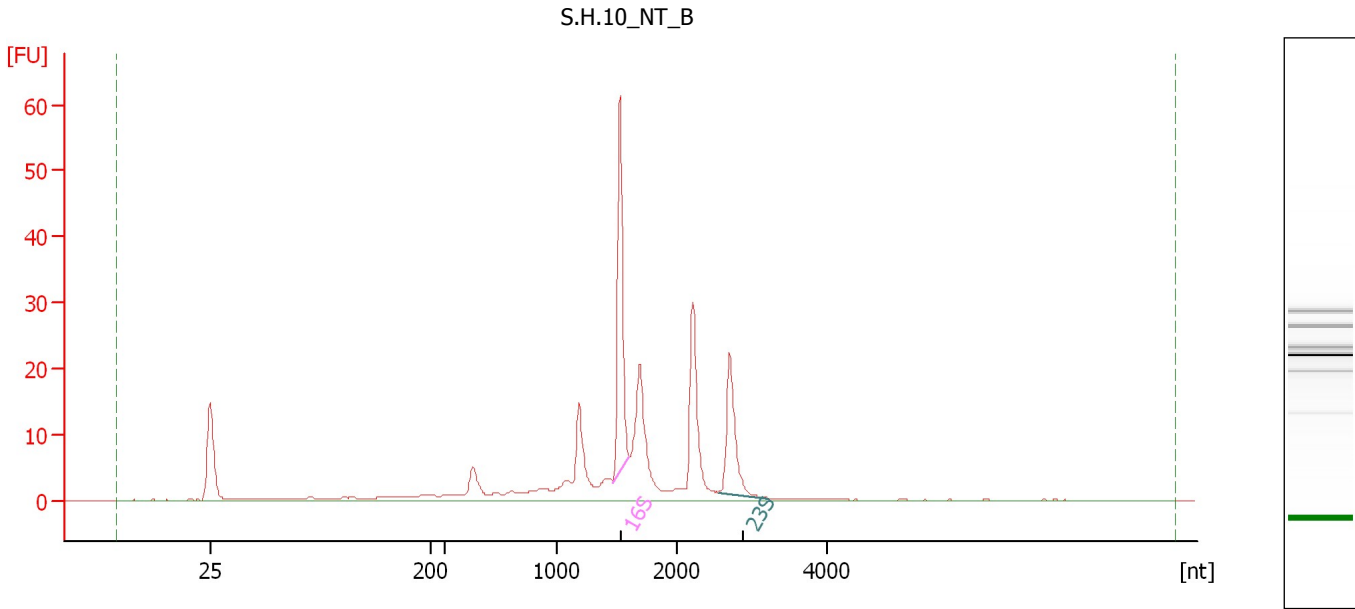
Fragment table for sample 1 : S.H.10 NT A

Name	Start Size [nt]	End Size [nt]	Area	% of total Area
16S	1,496	1,631	11.9	23.6
23S	2,561	3,133	6.1	12.1

Assay Class: Prokaryote Total RNA Nano
Data Path: C:\...ents and Settings\Bioanalyzer\2015-08-25\2015-08-25_005.xad

Created: 8/25/2015 4:19:45 PM
Modified: 8/25/2015 4:34:56 PM

Electropherogram Summary Continued ...



Overall Results for sample 2 : S.H.10 NT B

RNA Area: 192.7 rRNA Ratio [23s / 16s]: 0.5
RNA Concentration: 187 ng/μl RNA Integrity Number (RIN): 7.1 (B.02.08)

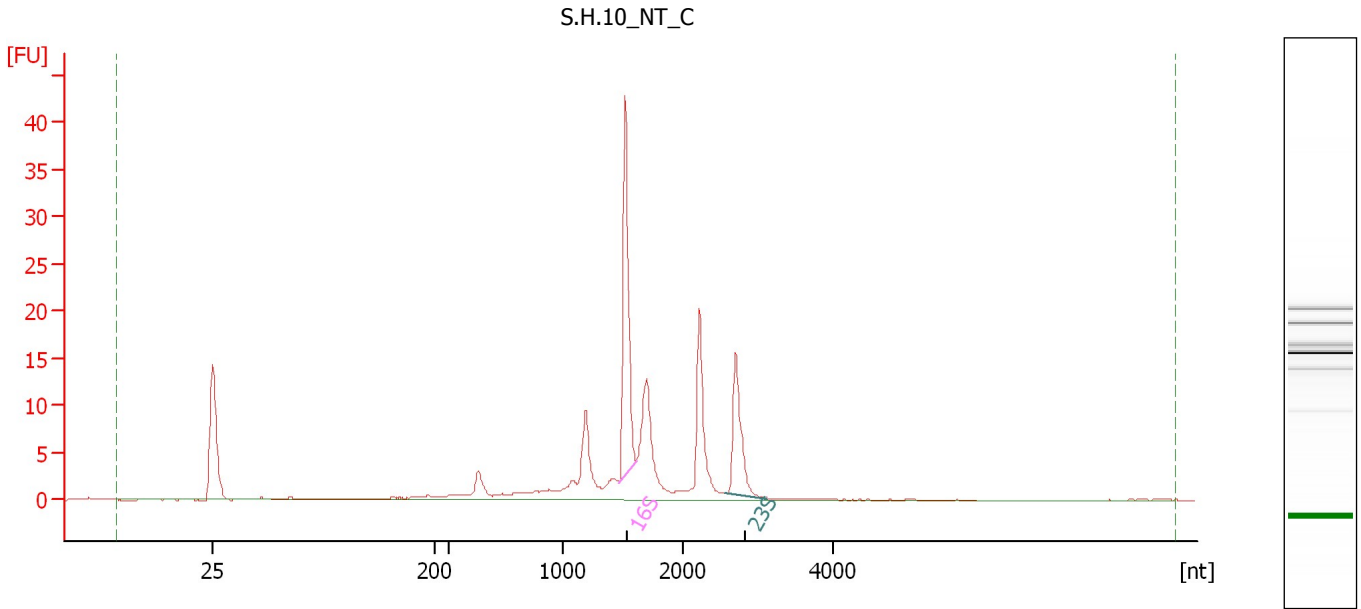
Fragment table for sample 2 : S.H.10 NT B

Name	Start Size [nt]	End Size [nt]	Area	% of total Area
16S	1,474	1,609	37.8	19.6
23S	2,561	3,243	20.0	10.4

Assay Class: Prokaryote Total RNA Nano
Data Path: C:\...ents and Settings\Bioanalyzer\2015-08-25\2015-08-25_005.xad

Created: 8/25/2015 4:19:45 PM
Modified: 8/25/2015 4:34:56 PM

Electropherogram Summary Continued ...



Overall Results for sample 3 : S.H.10 NT C

RNA Area: 119.0 rRNA Ratio [23s / 16s]: 0.5
RNA Concentration: 116 ng/μl RNA Integrity Number (RIN): 7.3 (B.02.08)

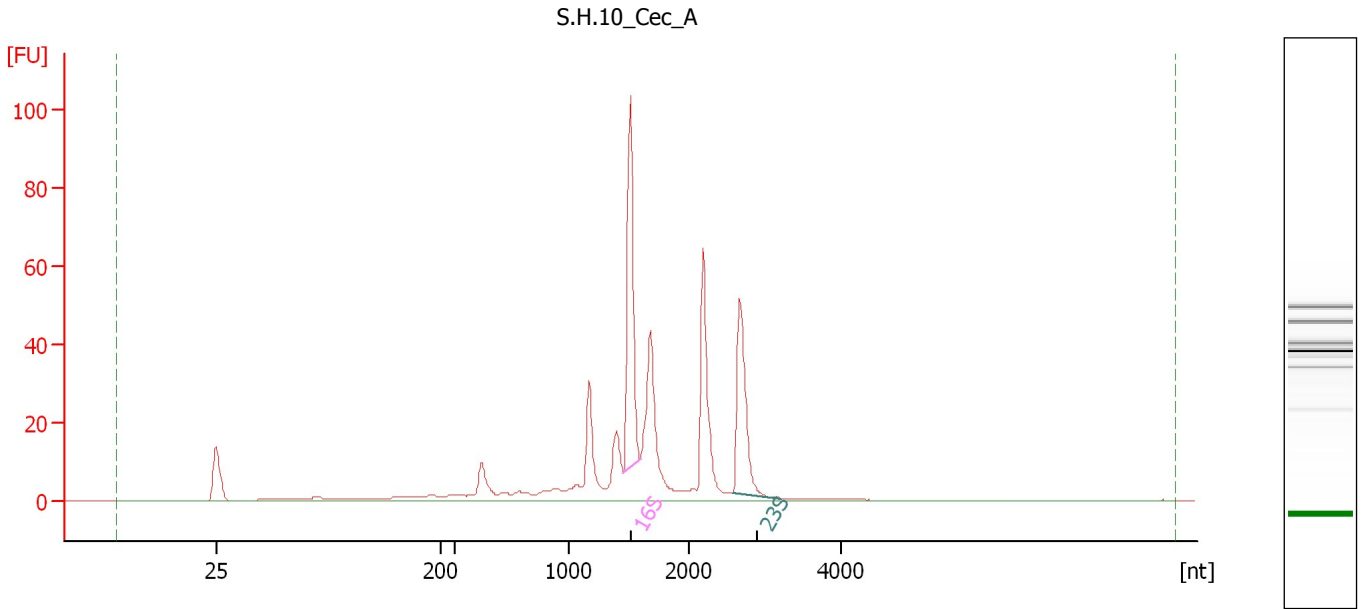
Fragment table for sample 3 : S.H.10 NT C

Name	Start Size [nt]	End Size [nt]	Area	% of total Area
16S	1,471	1,614	26.1	21.9
23S	2,561	3,126	13.2	11.1

Assay Class: Prokaryote Total RNA Nano
Data Path: C:\...ents and Settings\Bioanalyzer\2015-08-25\2015-08-25_005.xad

Created: 8/25/2015 4:19:45 PM
Modified: 8/25/2015 4:34:56 PM

Electropherogram Summary Continued ...



Overall Results for sample 4 : S.H.10 Cec A

RNA Area: 365.7 rRNA Ratio [23s / 16s]: 0.7
RNA Concentration: 355 ng/μl RNA Integrity Number (RIN): 7.1 (B.02.08)

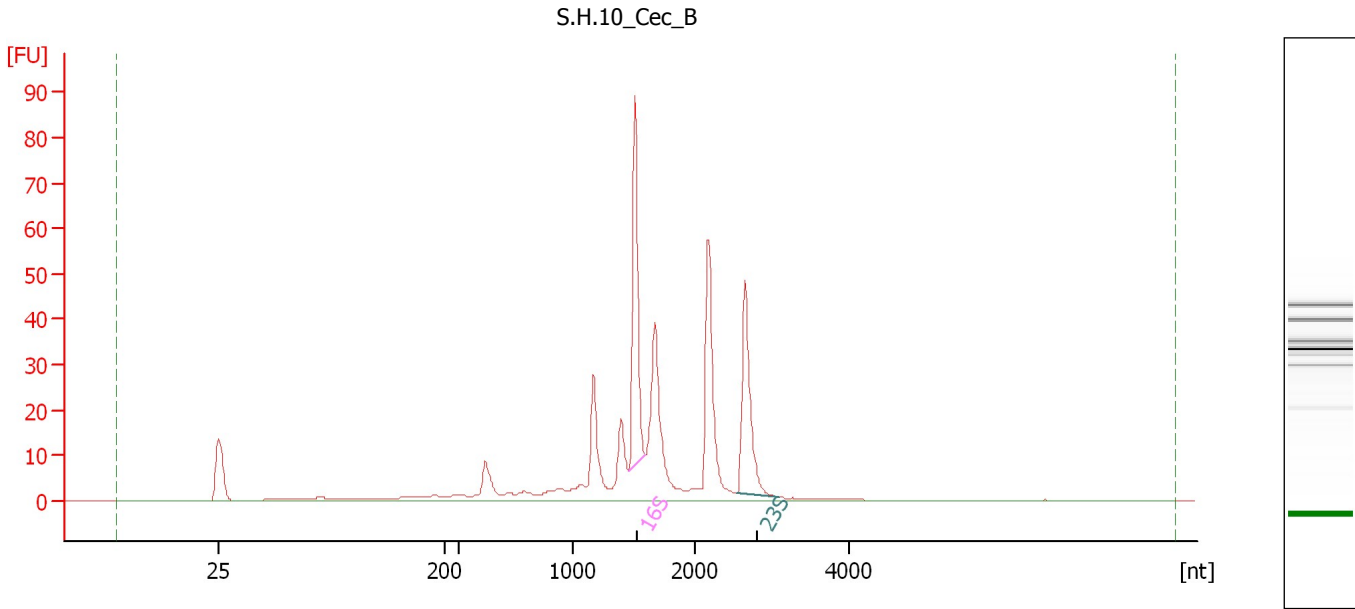
Fragment table for sample 4 : S.H.10 Cec A

Name	Start Size [nt]	End Size [nt]	Area	% of total Area
16S	1,459	1,601	63.2	17.3
23S	2,575	3,206	45.9	12.5

Assay Class: Prokaryote Total RNA Nano
Data Path: C:\...ents and Settings\Bioanalyzer\2015-08-25\2015-08-25_005.xad

Created: 8/25/2015 4:19:45 PM
Modified: 8/25/2015 4:34:56 PM

Electropherogram Summary Continued ...



Overall Results for sample 5 : S.H.10 Cec B

RNA Area: 320.9 rRNA Ratio [23s / 16s]: 0.8
RNA Concentration: 311 ng/μl RNA Integrity Number (RIN): 7.1 (B.02.08)

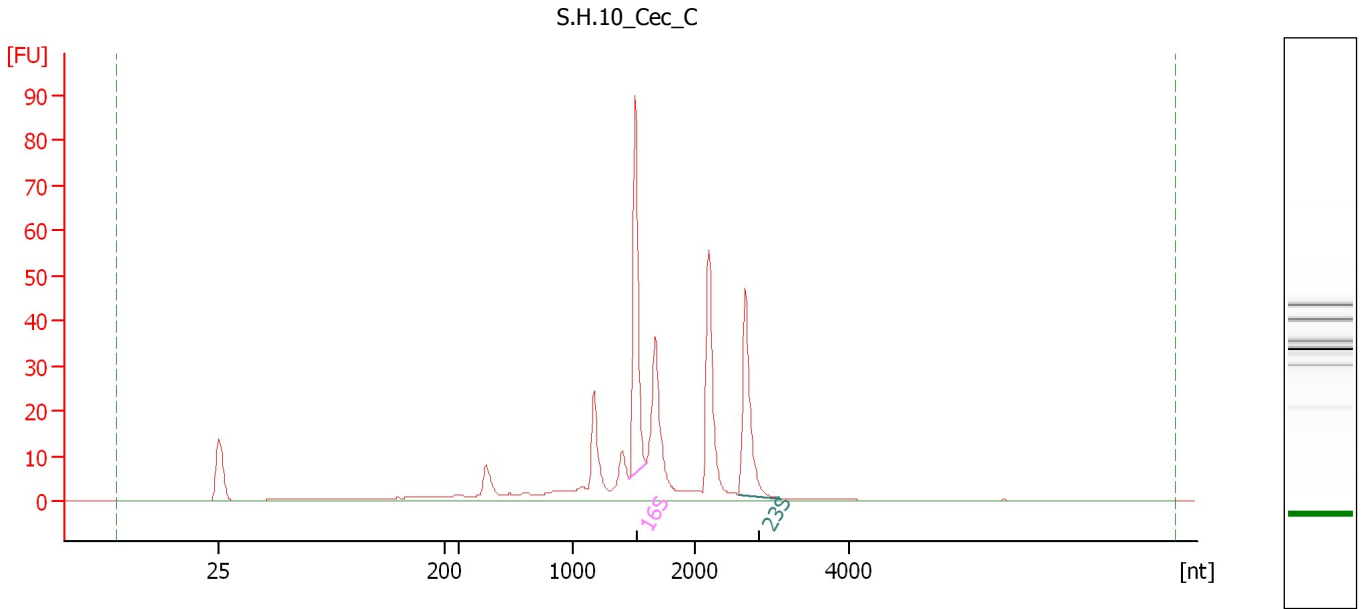
Fragment table for sample 5 : S.H.10 Cec B

Name	Start Size [nt]	End Size [nt]	Area	% of total Area
16S	1,456	1,588	54.7	17.0
23S	2,561	3,091	41.3	12.9

Assay Class: Prokaryote Total RNA Nano
Data Path: C:\...ents and Settings\Bioanalyzer\2015-08-25\2015-08-25_005.xad

Created: 8/25/2015 4:19:45 PM
Modified: 8/25/2015 4:34:56 PM

Electropherogram Summary Continued ...



Overall Results for sample 6 : S.H.10 Cec C

RNA Area: 292.5 rRNA Ratio [23s / 16s]: 0.7
RNA Concentration: 284 ng/μl RNA Integrity Number (RIN): 7.3 (B.02.08)

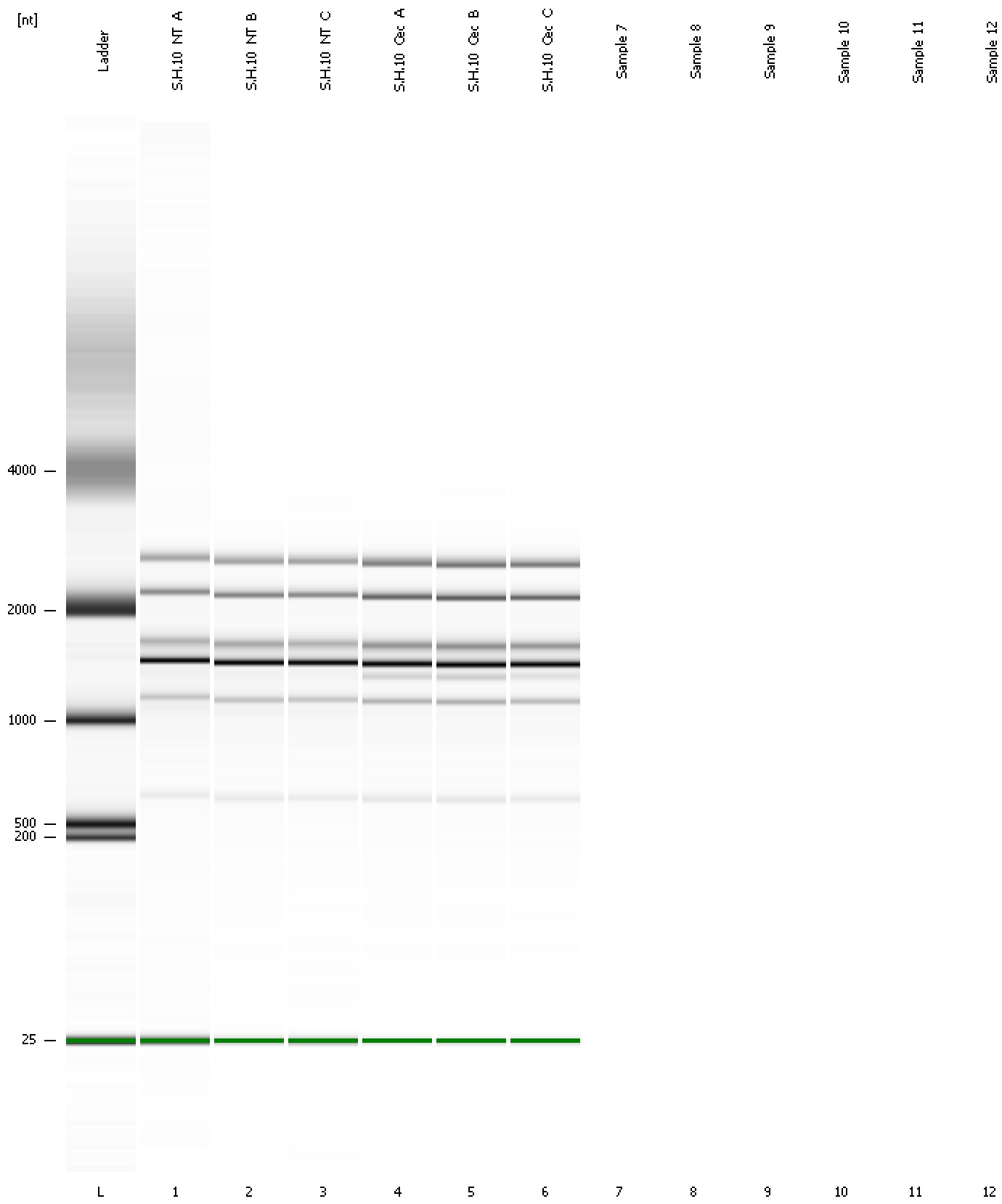
Fragment table for sample 6 : S.H.10 Cec C

Name	Start Size [nt]	End Size [nt]	Area	% of total Area
16S	1,456	1,597	55.0	18.8
23S	2,575	3,119	37.4	12.8

Assay Class: Prokaryote Total RNA Nano
Data Path: C:\...ents and Settings\Bioanalyzer\2015-08-25\2015-08-25_005.xad

Created: 8/25/2015 4:19:45 PM
Modified: 8/25/2015 4:34:56 PM

Gel Image



Assay Class: Prokaryote Total RNA Nano
Data Path: C:\...ents and Settings\Bioanalyzer\2015-08-25\2015-08-25_005.xad

Created: 8/25/2015 4:19:45 PM
Modified: 8/25/2015 4:34:56 PM

Invalid Samples

Sample 7 has not been run, no results available.

Sample 8 has not been run, no results available.

Sample 9 has not been run, no results available.

Sample 10 has not been run, no results available.