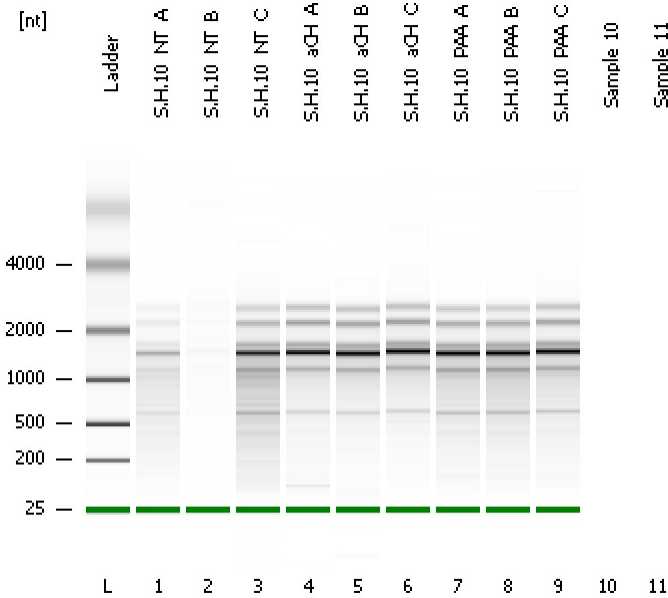


Assay Class: Prokaryote Total RNA Pico
Data Path: C:\...ents and Settings\Bioanalyzer\2015-08-26\2015-08-26_001.xad

Created: 8/26/2015 3:53:18 PM
Modified: 8/26/2015 4:27:57 PM

Electrophoresis File Run Summary



Instrument Information:

Instrument Name: DE13701086 Firmware: C.01.069
Serial#: DE13701086 Type: G2938B

Assay Information:

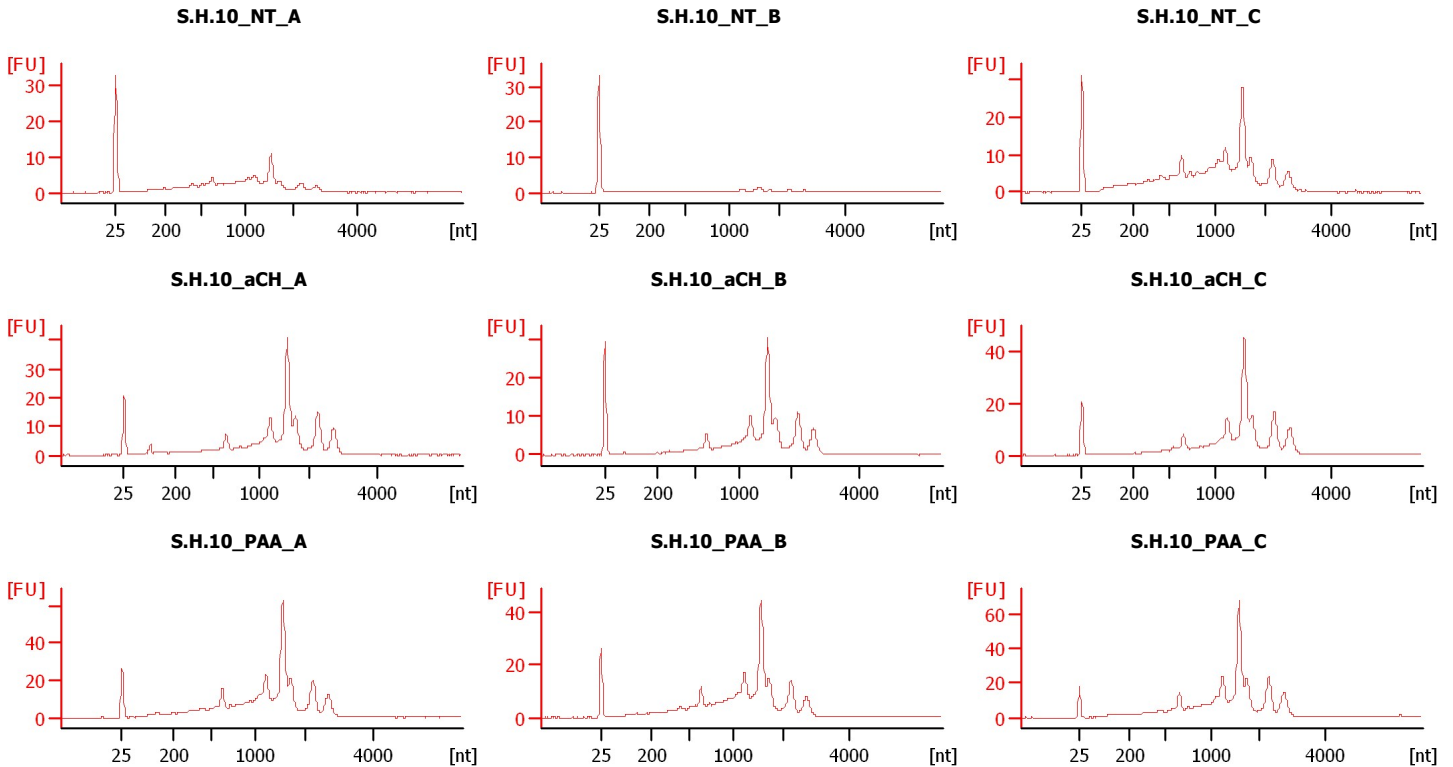
Assay Origin Path: C:\Program Files\Agilent\2100 bioanalyzer\2100 expert\assays\RNA\Prokaryote Total RNA Pico Series II.xsy

Assay Class: Prokaryote Total RNA Pico
Version: 2.5
Assay Comments: Total RNA Analysis pg sensitivity (Prokaryote)

© Copyright 2003 - 2009 Agilent Technologies, Inc.

Chip Information:

Chip Lot #:
Reagent Kit Lot #:
Chip Comments:



Assay Class: Prokaryote Total RNA Pico
Data Path: C:\...ents and Settings\Bioanalyzer\2015-08-26\2015-08-26_001.xad

Created: 8/26/2015 3:53:18 PM
Modified: 8/26/2015 4:27:57 PM

Electrophoresis File Run Summary (Chip Summary)

Sample Name	Sample Comment	Status	Result Label	Result Color
S.H.10_NT_A		✓		
S.H.10_NT_B		✓		
S.H.10_NT_C		✓		
S.H.10_aCH_A		✓		
S.H.10_aCH_B		✓		
S.H.10_aCH_C		✓		
S.H.10_PAA_A		✓		
S.H.10_PAA_B		✓		
S.H.10_PAA_C		✓		
Sample 10				
Sample 11				
Ladder		✓		

Chip Lot #**Reagent Kit Lot #****Chip Comments :**

Assay Class: Prokaryote Total RNA Pico
Data Path: C:\...ents and Settings\Bioanalyzer\2015-08-26\2015-08-26_001.xad

Created: 8/26/2015 3:53:18 PM
Modified: 8/26/2015 4:27:57 PM

Electrophoresis Assay Details

General Analysis Settings

Number of Available Sample and Ladder Wells (Max.) : 12
Minimum Visible Range [s] : 17
Maximum Visible Range [s] : 70
Start Analysis Time Range [s] : 18
End Analysis Time Range [s] : 69
Ladder Concentration [pg/μl] : 1000
Lower Marker Concentration [pg/μl] : 0
Upper Marker Concentration [pg/μl] : 0
Used Lower Marker for Quantitation
Standard Curve Fit is Logarithmic
Show Data Aligned to Lower Marker

Integrator Settings

Integration Start Time [s] : 18
Integration End Time [s] : 69
Slope Threshold : 0.6
Height Threshold [FU] : 0.5
Area Threshold : 0.2
Width Threshold [s] : 0.3
Baseline Plateau [s] : 6

Filter Settings

Filter Width [s] : 0.5
Polynomial Order : 4

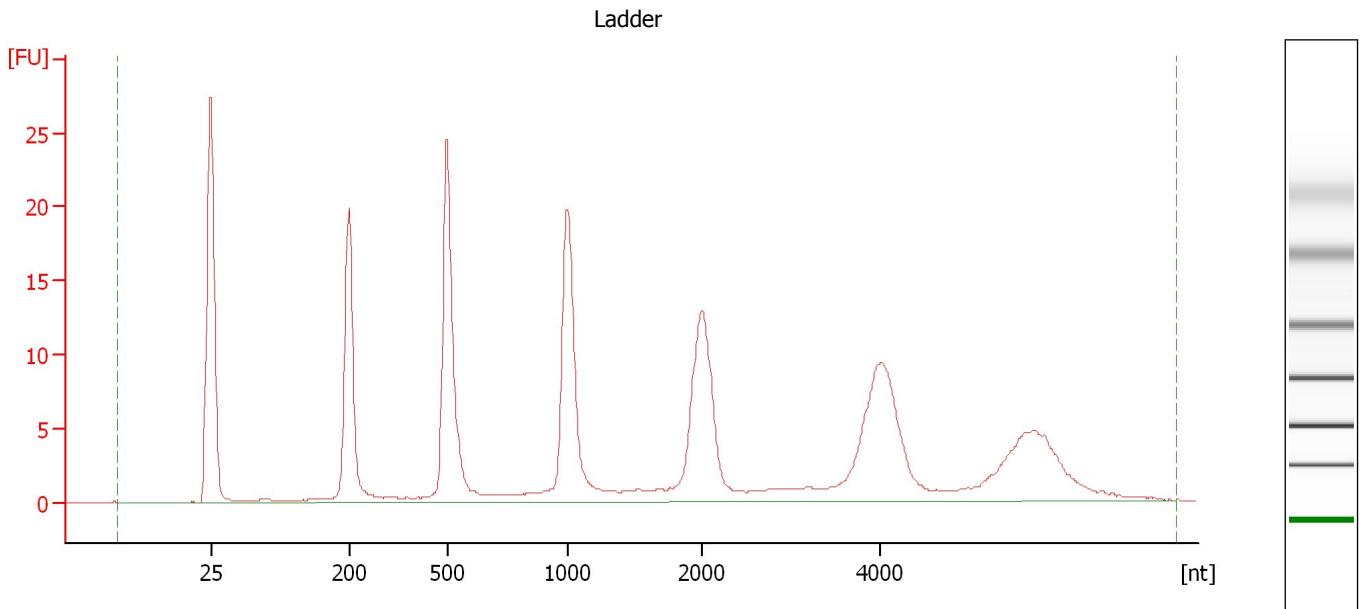
Ladder

Ladder Peak	Size
1	25
2	200
3	500
4	1000
5	2000
6	4000

Assay Class: Prokaryote Total RNA Pico
Data Path: C:\...ents and Settings\Bioanalyzer\2015-08-26\2015-08-26_001.xad

Created: 8/26/2015 3:53:18 PM
Modified: 8/26/2015 4:27:57 PM

Electropherogram Summary



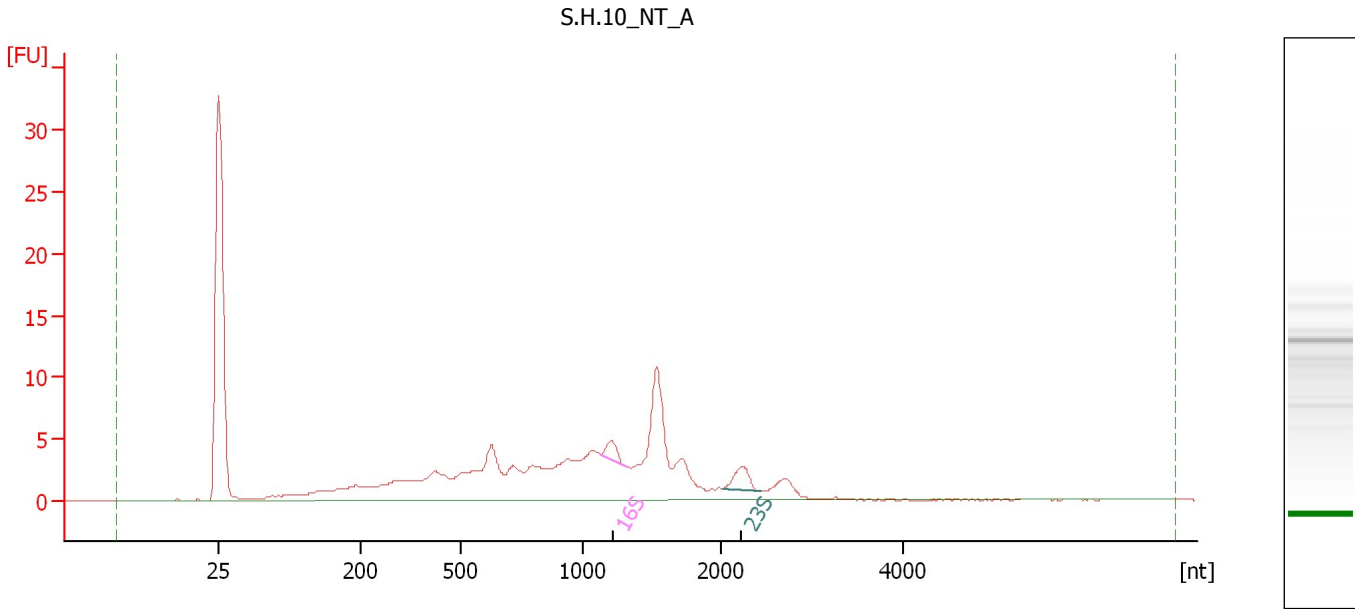
Overall Results for Ladder

RNA Area: 219.7 RNA Concentration: 1,000 pg/μl

Assay Class: Prokaryote Total RNA Pico
Data Path: C:\...ents and Settings\Bioanalyzer\2015-08-26\2015-08-26_001.xad

Created: 8/26/2015 3:53:18 PM
Modified: 8/26/2015 4:27:57 PM

Electropherogram Summary Continued ...



Overall Results for sample 1 : S.H.10 NT A

RNA Area: 136.4 rRNA Ratio [23s / 16s]: 1.6
RNA Concentration: 621 pg/μl RNA Integrity Number (RIN): 2.9 (B.02.08)

Fragment table for sample 1 : S.H.10 NT A

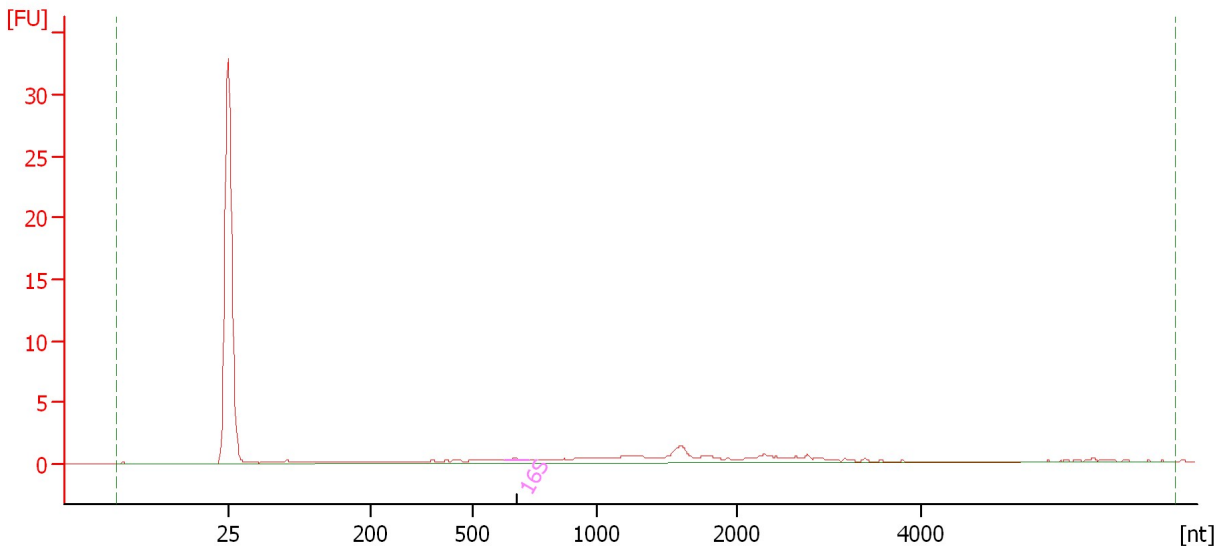
Name	Start Size [nt]	End Size [nt]	Area	% of total Area
16S	1,130	1,317	2.0	1.5
23S	2,027	2,438	3.2	2.3

Assay Class: Prokaryote Total RNA Pico
Data Path: C:\...ents and Settings\Bioanalyzer\2015-08-26\2015-08-26_001.xad

Created: 8/26/2015 3:53:18 PM
Modified: 8/26/2015 4:27:57 PM

Electropherogram Summary Continued ...

S.H.10_NT_B



Overall Results for sample 2 : S.H.10 NT B

RNA Area: 18.1 rRNA Ratio [23s / 16s]: 0.0
RNA Concentration: 82 pg/μl RNA Integrity Number (RIN): 2.1 (B.02.08)

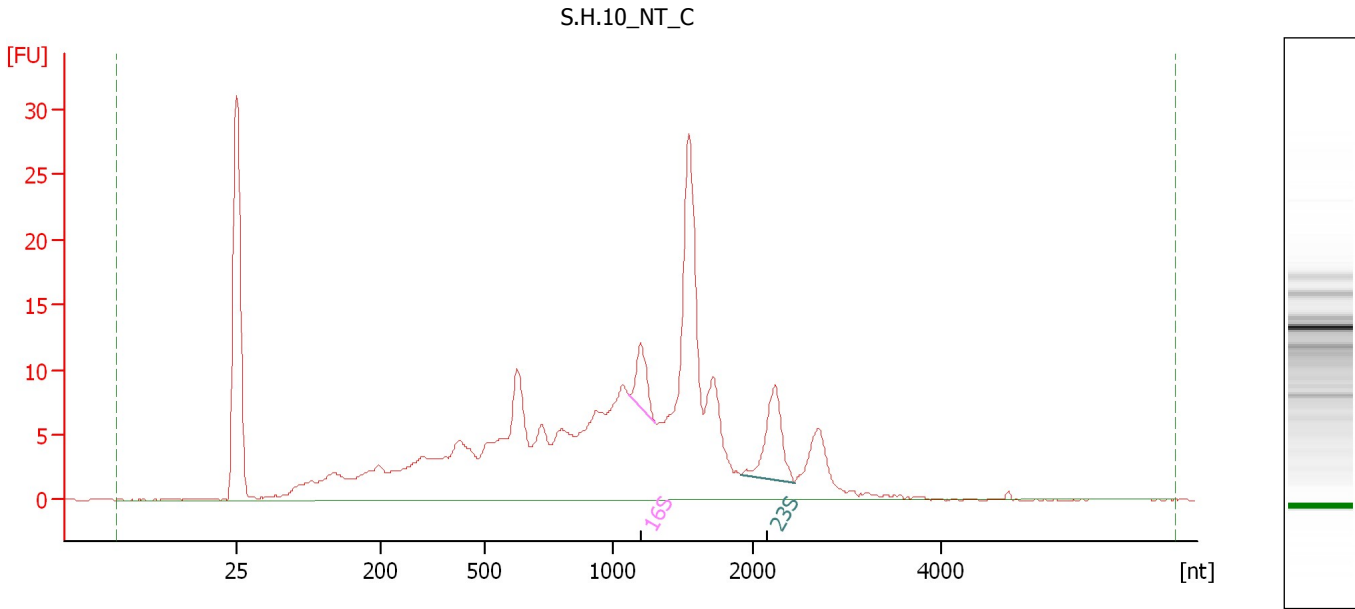
Fragment table for sample 2 : S.H.10 NT B

Name	Start Size [nt]	End Size [nt]	Area	% of total Area
16S	628	722	0.2	0.9

Assay Class: Prokaryote Total RNA Pico
Data Path: C:\...ents and Settings\Bioanalyzer\2015-08-26\2015-08-26_001.xad

Created: 8/26/2015 3:53:18 PM
Modified: 8/26/2015 4:27:57 PM

Electropherogram Summary Continued ...



Overall Results for sample 3 : S.H.10 NT C

RNA Area: 309.4 rRNA Ratio [23s / 16s]: 2.0
RNA Concentration: 1,408 pg/μl RNA Integrity Number (RIN): 3.3 (B.02.08)

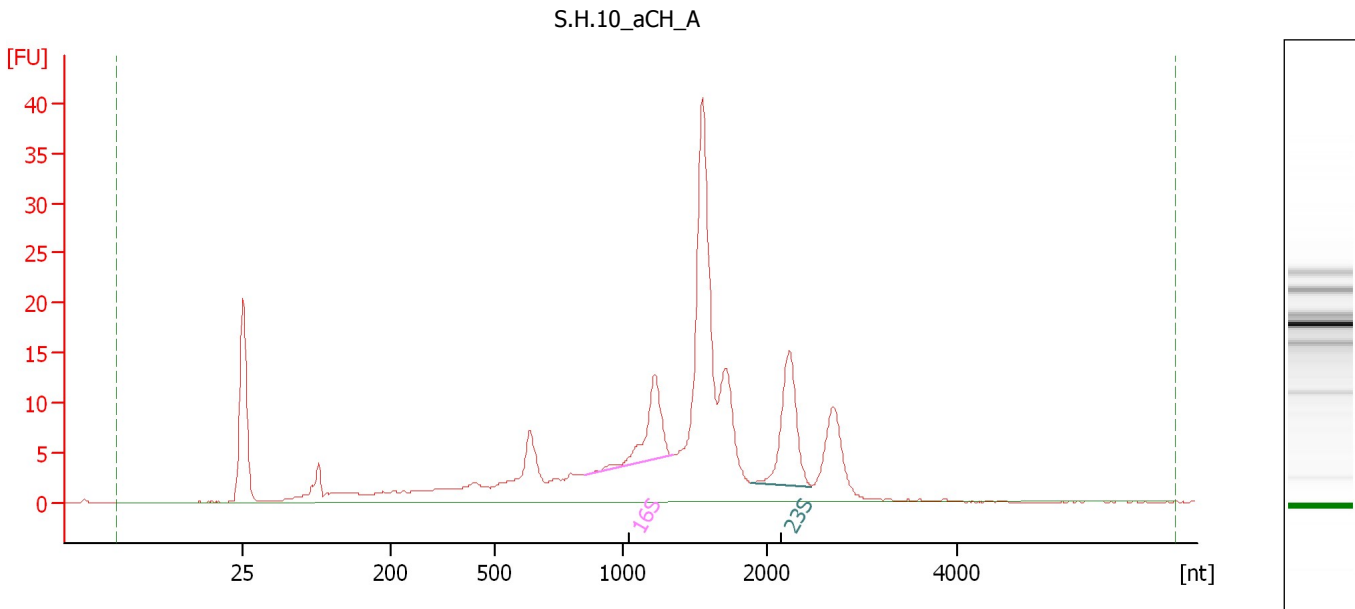
Fragment table for sample 3 : S.H.10 NT C

Name	Start Size [nt]	End Size [nt]	Area	% of total Area
16S	1,124	1,305	6.0	1.9
23S	1,908	2,431	12.2	3.9

Assay Class: Prokaryote Total RNA Pico
Data Path: C:\...ents and Settings\Bioanalyzer\2015-08-26\2015-08-26_001.xad

Created: 8/26/2015 3:53:18 PM
Modified: 8/26/2015 4:27:57 PM

Electropherogram Summary Continued ...



Overall Results for sample 4 : S.H.10 aCH A

RNA Area: 262.5 RNA Integrity Number (RIN): 4.5 (B.02.08, Anomaly Threshold(s) manually adapted)
RNA Concentration: 1,195 µg/µl
rRNA Ratio [23s / 16s]: 1.3

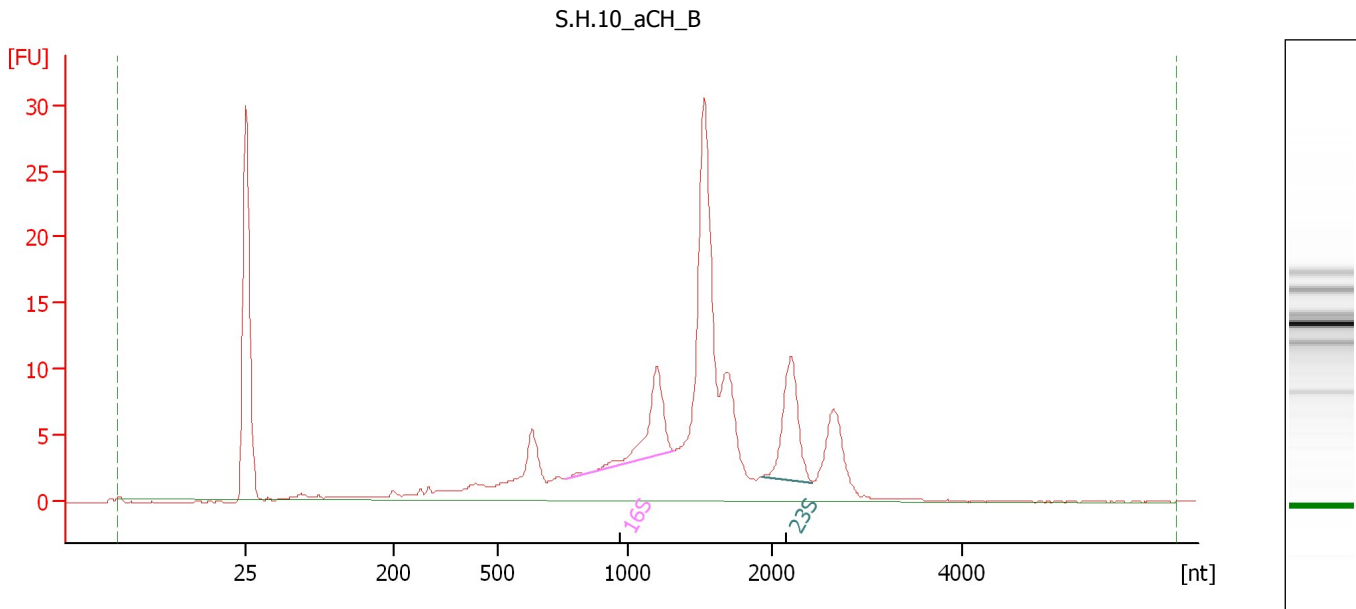
Fragment table for sample 4 : S.H.10 aCH A

Name	Start Size [nt]	End Size [nt]	Area	% of total Area
16S	851	1,344	16.3	6.2
23S	1,896	2,473	21.1	8.0

Assay Class: Prokaryote Total RNA Pico
Data Path: C:\...ents and Settings\Bioanalyzer\2015-08-26\2015-08-26_001.xad

Created: 8/26/2015 3:53:18 PM
Modified: 8/26/2015 4:27:57 PM

Electropherogram Summary Continued ...



Overall Results for sample 5 : S.H.10 aCH B

RNA Area: 189.3 RNA Integrity Number (RIN): 4.5 (B.02.08, Anomaly Threshold(s) manually adapted)
RNA Concentration: 862 pg/μl
rRNA Ratio [23s / 16s]: 1.1

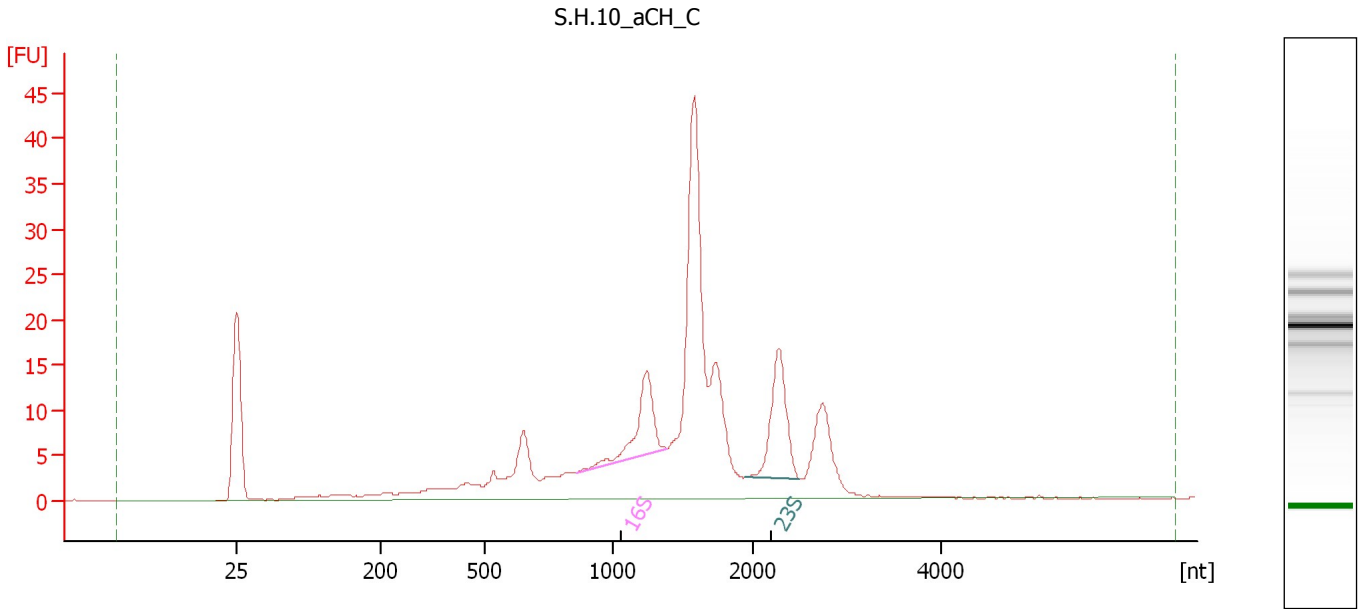
Fragment table for sample 5 : S.H.10 aCH B

Name	Start Size [nt]	End Size [nt]	Area	% of total Area
16S	759	1,325	13.4	7.1
23S	1,934	2,427	14.9	7.9

Assay Class: Prokaryote Total RNA Pico
Data Path: C:\...ents and Settings\Bioanalyzer\2015-08-26\2015-08-26_001.xad

Created: 8/26/2015 3:53:18 PM
Modified: 8/26/2015 4:27:57 PM

Electropherogram Summary Continued ...



Overall Results for sample 6 : S.H.10 aCH C

RNA Area: 284.7 RNA Integrity Number (RIN): 4.5 (B.02.08, Anomaly Threshold(s) manually adapted)
RNA Concentration: 1,296 µg/µl
rRNA Ratio [23s / 16s]: 1.3

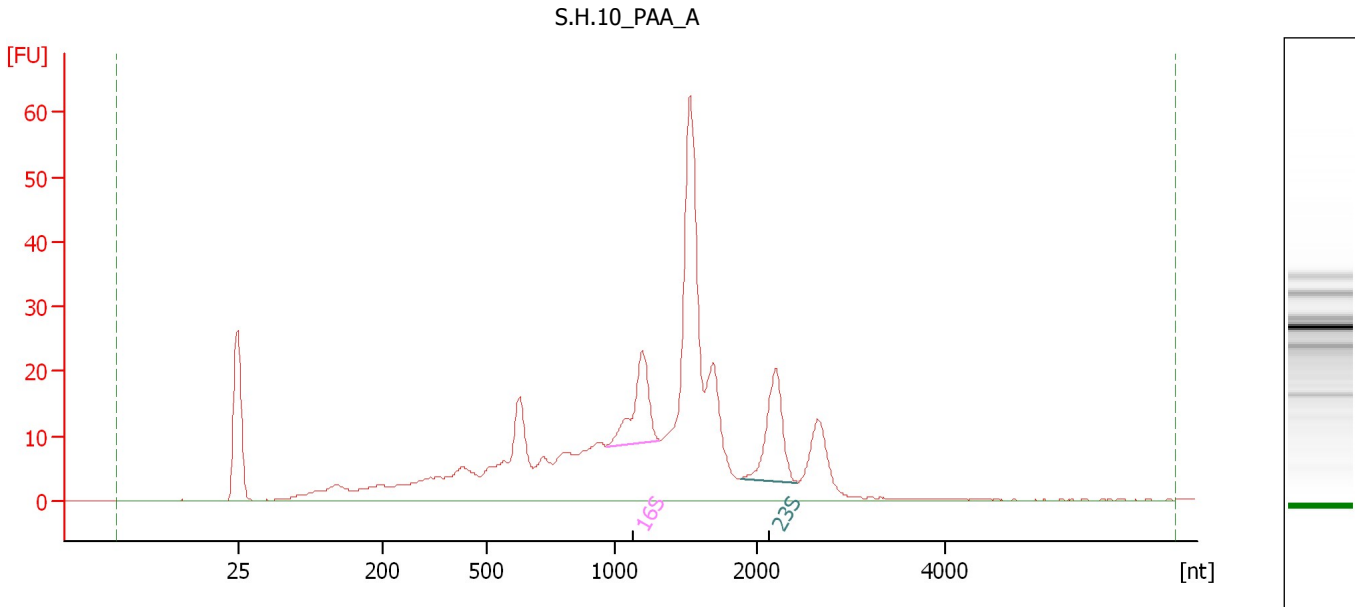
Fragment table for sample 6 : S.H.10 aCH C

Name	Start Size [nt]	End Size [nt]	Area	% of total Area
16S	863	1,388	17.5	6.2
23S	1,931	2,488	23.7	8.3

Assay Class: Prokaryote Total RNA Pico
Data Path: C:\...ents and Settings\Bioanalyzer\2015-08-26\2015-08-26_001.xad

Created: 8/26/2015 3:53:18 PM
Modified: 8/26/2015 4:27:57 PM

Electropherogram Summary Continued ...



Overall Results for sample 7 : S.H.10 PAA A

RNA Area: 485.9 rRNA Ratio [23s / 16s]: 1.1
RNA Concentration: 2,212 pg/μl RNA Integrity Number (RIN): 4.1 (B.02.08)

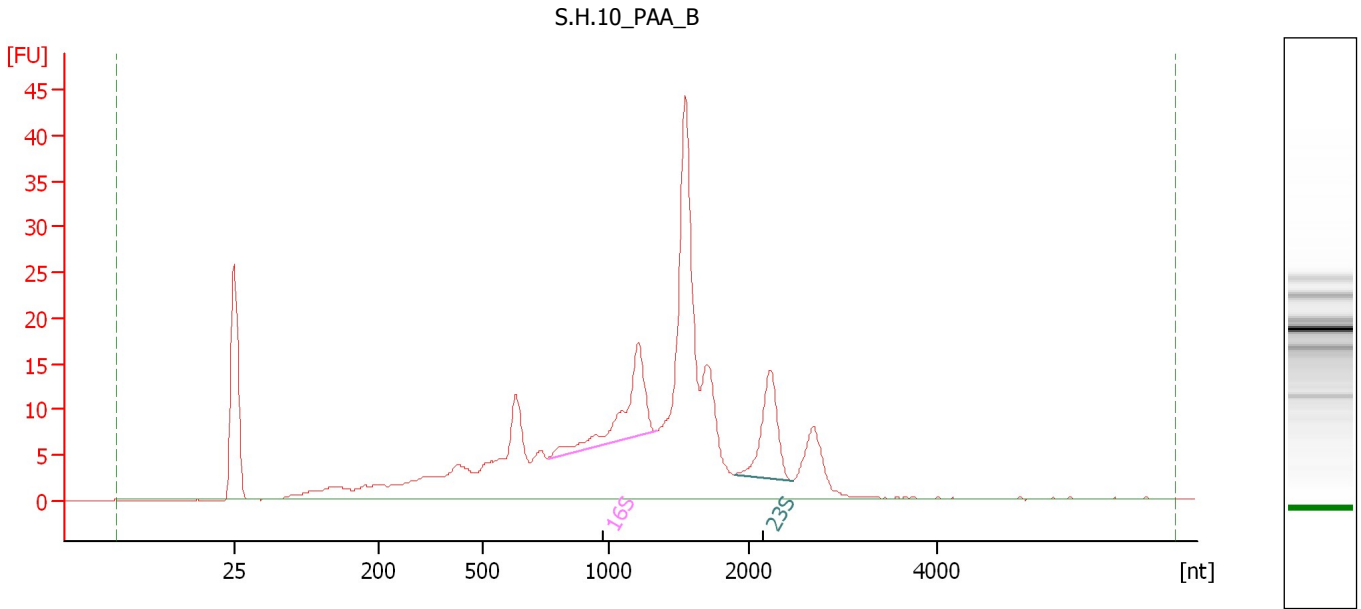
Fragment table for sample 7 : S.H.10 PAA A

Name	Start Size [nt]	End Size [nt]	Area	% of total Area
16S	969	1,322	26.2	5.4
23S	1,894	2,442	29.2	6.0

Assay Class: Prokaryote Total RNA Pico
Data Path: C:\...ents and Settings\Bioanalyzer\2015-08-26\2015-08-26_001.xad

Created: 8/26/2015 3:53:18 PM
Modified: 8/26/2015 4:27:57 PM

Electropherogram Summary Continued ...



Overall Results for sample 8 : S.H.10 PAA B

RNA Area: 358.1 rRNA Ratio [23s / 16s]: 0.8
RNA Concentration: 1,630 pg/μl RNA Integrity Number (RIN): 4.3 (B.02.08)

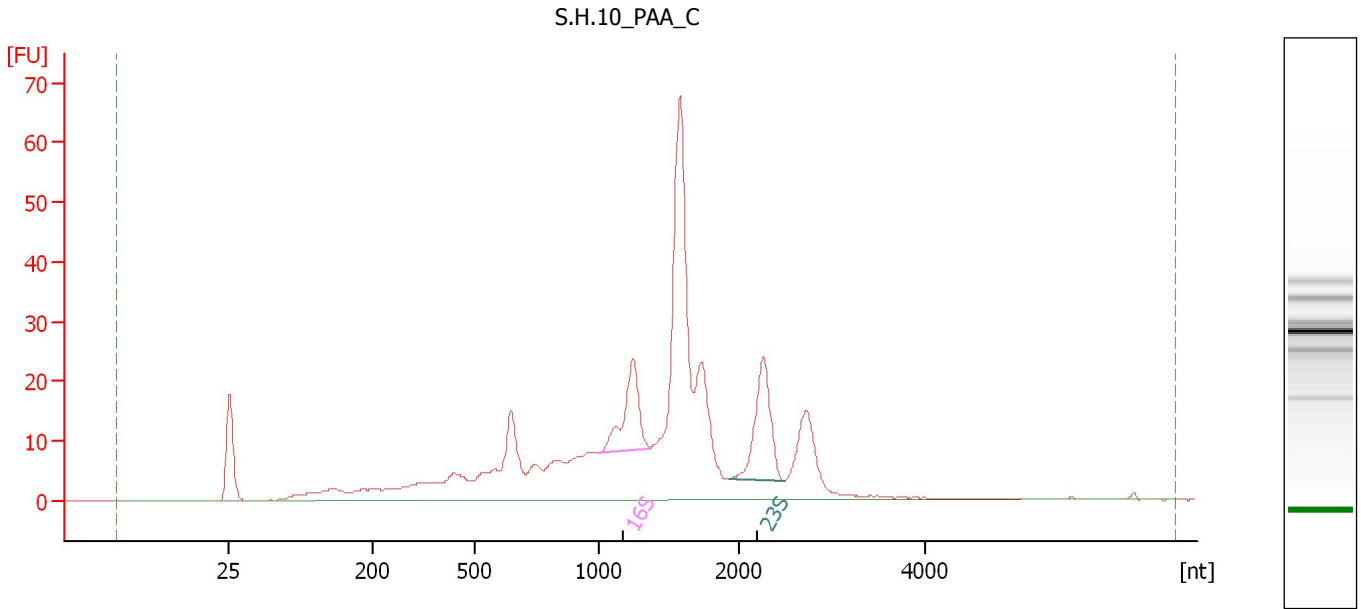
Fragment table for sample 8 : S.H.10 PAA B

Name	Start Size [nt]	End Size [nt]	Area	% of total Area
16S	763	1,339	26.0	7.3
23S	1,892	2,454	20.1	5.6

Assay Class: Prokaryote Total RNA Pico
Data Path: C:\...ents and Settings\Bioanalyzer\2015-08-26\2015-08-26_001.xad

Created: 8/26/2015 3:53:18 PM
Modified: 8/26/2015 4:27:57 PM

Electropherogram Summary Continued ...



Overall Results for sample 9 : S.H.10 PAA C

RNA Area: 491.4 rRNA Ratio [23s / 16s]: 1.2
RNA Concentration: 2,237 pg/μl RNA Integrity Number (RIN): 4.3 (B.02.08)

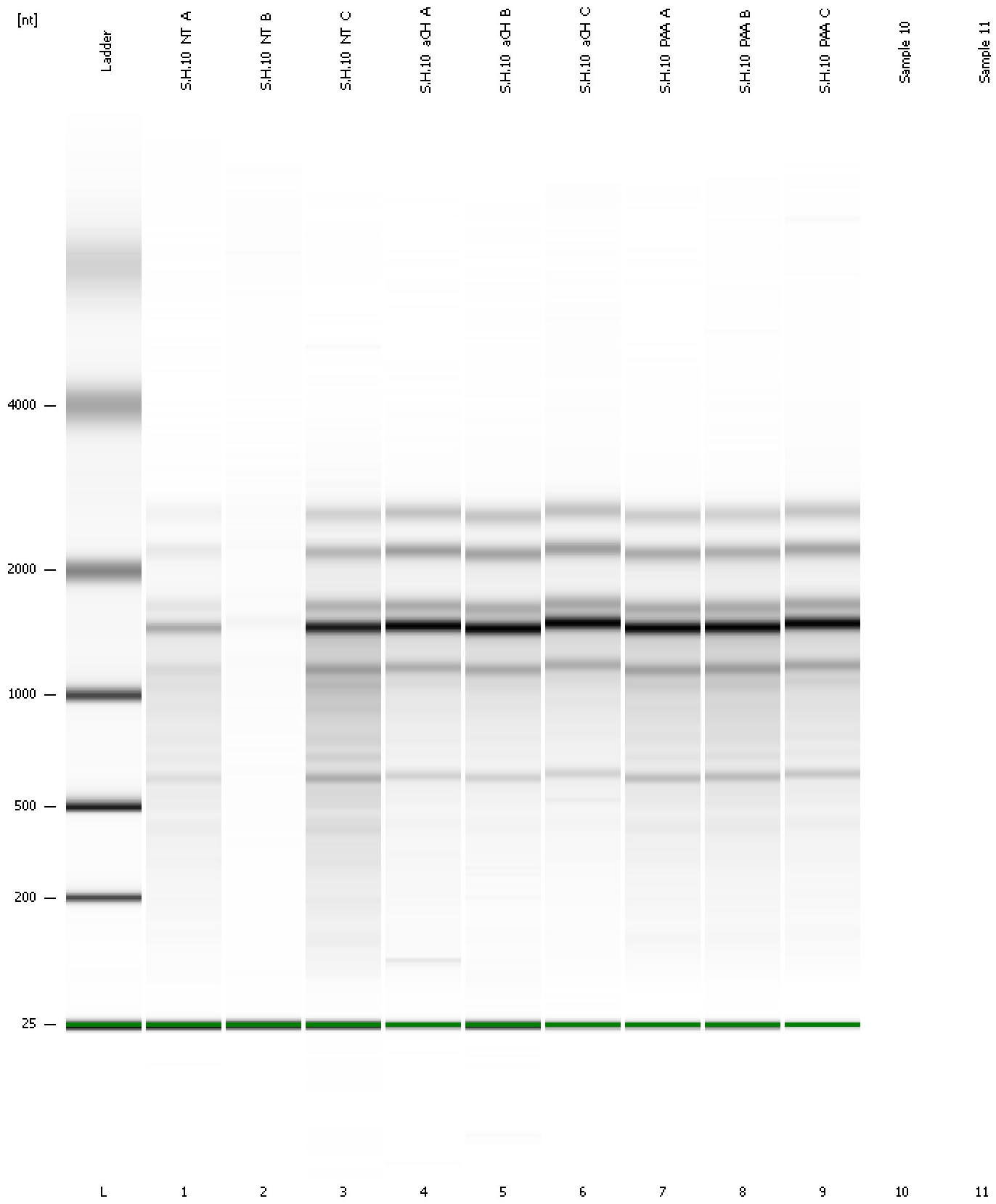
Fragment table for sample 9 : S.H.10 PAA C

Name	Start Size [nt]	End Size [nt]	Area	% of total Area
16S	993	1,354	28.1	5.7
23S	1,928	2,492	34.5	7.0

Assay Class: Prokaryote Total RNA Pico
Data Path: C:\...ents and Settings\Bioanalyzer\2015-08-26\2015-08-26_001.xad

Created: 8/26/2015 3:53:18 PM
Modified: 8/26/2015 4:27:57 PM

Gel Image



Assay Class: Prokaryote Total RNA Pico
Data Path: C:\...ents and Settings\Bioanalyzer\2015-08-26\2015-08-26_001.xad

Created: 8/26/2015 3:53:18 PM
Modified: 8/26/2015 4:27:57 PM

Invalid Samples

Sample 10 has not been run, no results available.