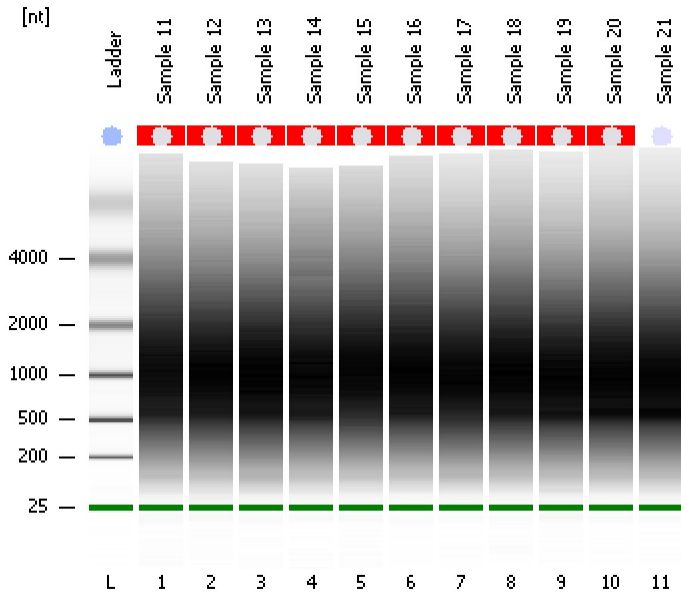


Assay Class: Eukaryote Total RNA Pico  
Data Path: C:\...ents and Settings\Bioanalyzer\2015-08-31\2015-08-31\_001.xad

Created: 8/31/2015 10:39:51 AM  
Modified: 8/31/2015 11:02:44 AM

Electrophoresis File Run Summary



Instrument Information:

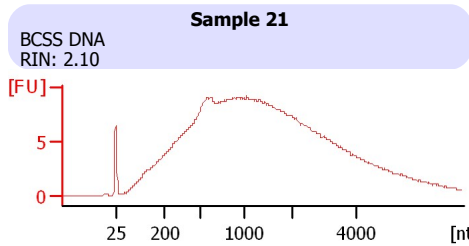
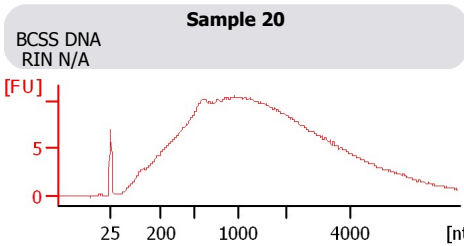
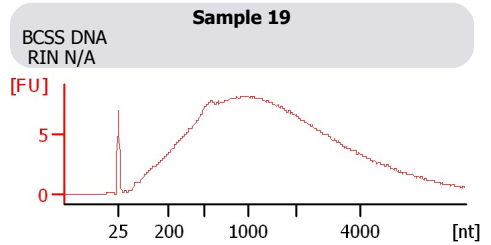
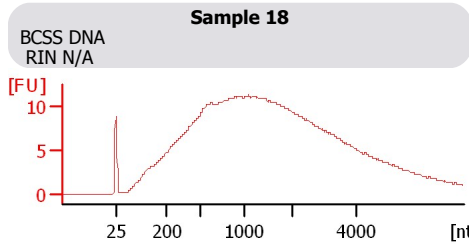
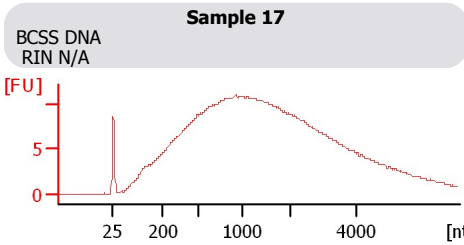
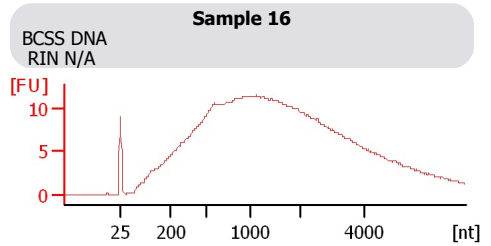
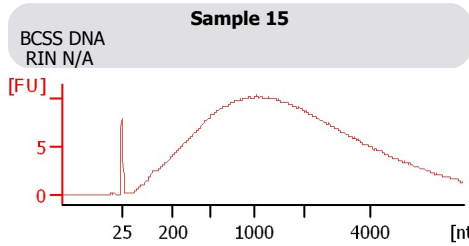
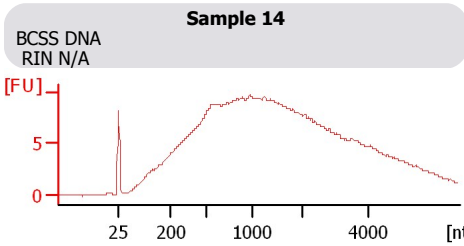
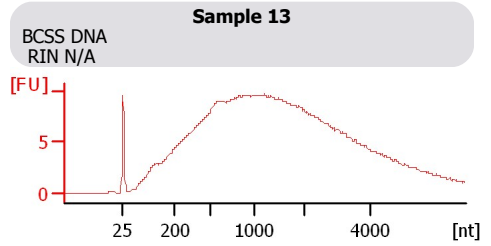
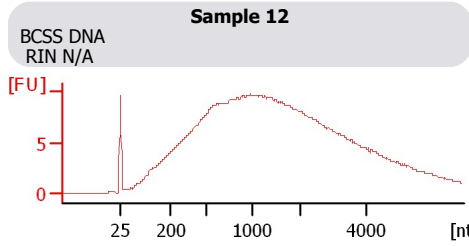
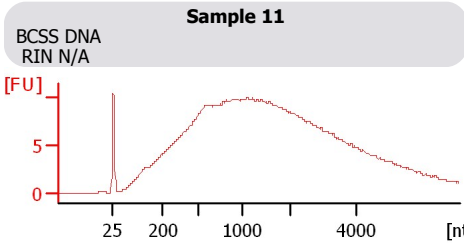
Instrument Name: DE13701086      Firmware: C.01.069  
Serial#: DE13701086      Type: G2938B

Assay Information:

Assay Origin Path: C:\Program Files\Agilent\2100 bioanalyzer\2100 expert\assays\RNA\Eukaryote Total RNA Pico Series II.xsy  
Assay Class: Eukaryote Total RNA Pico  
Version: 2.6  
Assay Comments: Total RNA Analysis pg sensitivity (Eukaryote)  
© Copyright 2003 - 2009 Agilent Technologies, Inc.

Chip Information:

Chip Lot #:   
Reagent Kit Lot #:   
Chip Comments:



Assay Class: Eukaryote Total RNA Pico  
 Data Path: C:\...ents and Settings\Bioanalyzer\2015-08-31\2015-08-31\_001.xad

Created: 8/31/2015 10:39:51 AM  
 Modified: 8/31/2015 11:02:44 AM

**Electrophoresis File Run Summary (Chip Summary)**

Sample Name	Sample Comment	Status	Result Label	Result Color
Sample 11	BCSS DNA	✓	RIN N/A	
Sample 12	BCSS DNA	✓	RIN N/A	
Sample 13	BCSS DNA	✓	RIN N/A	
Sample 14	BCSS DNA	✓	RIN N/A	
Sample 15	BCSS DNA	✓	RIN N/A	
Sample 16	BCSS DNA	✓	RIN N/A	
Sample 17	BCSS DNA	✓	RIN N/A	
Sample 18	BCSS DNA	✓	RIN N/A	
Sample 19	BCSS DNA	✓	RIN N/A	
Sample 20	BCSS DNA	✓	RIN N/A	
Sample 21	BCSS DNA	✓	RIN: 2.10	
Ladder		✓	All Other Samples	

**Chip Lot #**

**Reagent Kit Lot #**

**Chip Comments :**

Assay Class: Eukaryote Total RNA Pico  
Data Path: C:\...ents and Settings\Bioanalyzer\2015-08-31\2015-08-31\_001.xad

Created: 8/31/2015 10:39:51 AM  
Modified: 8/31/2015 11:02:44 AM

## Electrophoresis Assay Details

### General Analysis Settings

Number of Available Sample and Ladder Wells (Max.) : 12  
Minimum Visible Range [s] : 17  
Maximum Visible Range [s] : 70  
Start Analysis Time Range [s] : 18  
End Analysis Time Range [s] : 69  
Ladder Concentration [pg/ $\mu$ l] : 1000  
Lower Marker Concentration [pg/ $\mu$ l] : 0  
Upper Marker Concentration [pg/ $\mu$ l] : 0  
Used Lower Marker for Quantitation  
Standard Curve Fit is Logarithmic  
Show Data Aligned to Lower Marker

### Integrator Settings

Integration Start Time [s] : 18  
Integration End Time [s] : 69  
Slope Threshold : 0.6  
Height Threshold [FU] : 0.5  
Area Threshold : 0.2  
Width Threshold [s] : 0.3  
Baseline Plateau [s] : 6

### Filter Settings

Filter Width [s] : 0.5  
Polynomial Order : 4

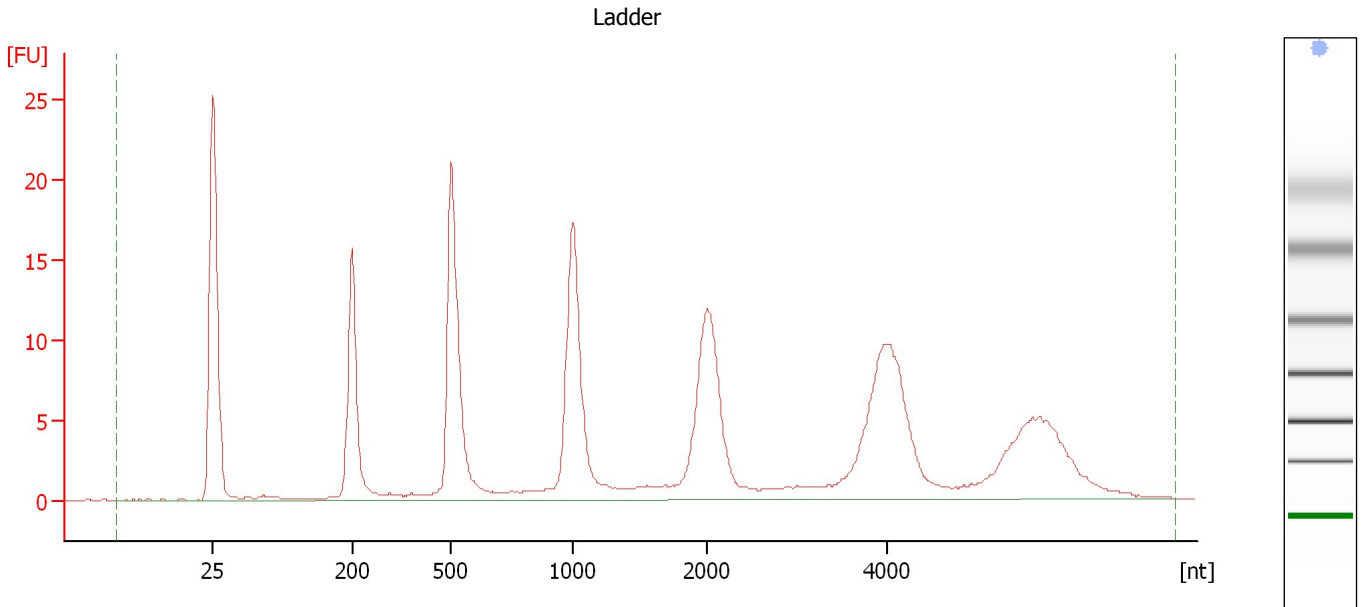
### Ladder

Ladder Peak	Size
1	25
2	200
3	500
4	1000
5	2000
6	4000

Assay Class: Eukaryote Total RNA Pico  
Data Path: C:\...ents and Settings\Bioanalyzer\2015-08-31\2015-08-31\_001.xad

Created: 8/31/2015 10:39:51 AM  
Modified: 8/31/2015 11:02:44 AM

**Electropherogram Summary**



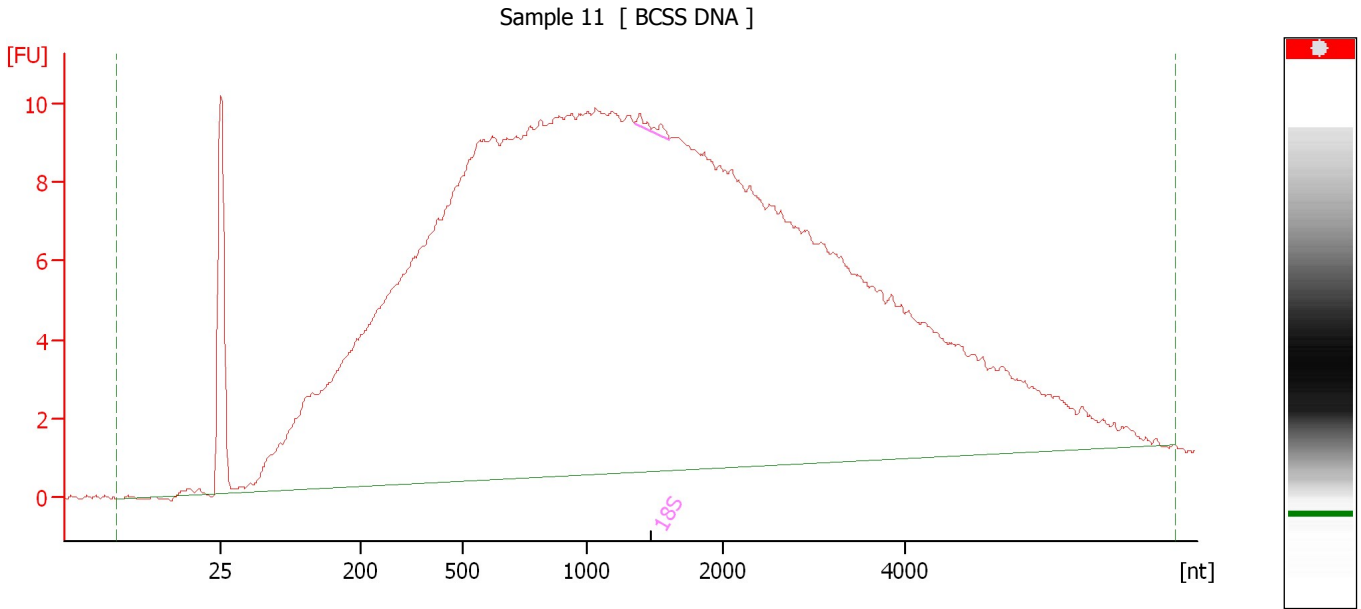
**Overall Results for Ladder**

RNA Area:	217.7	Result Flagging Color:	<span style="background-color: #add8e6; border: 1px solid black; display: inline-block; width: 20px; height: 10px;"></span>
RNA Concentration:	1,000 pg/μl	Result Flagging Label:	All Other Samples

Assay Class: Eukaryote Total RNA Pico  
Data Path: C:\...ents and Settings\Bioanalyzer\2015-08-31\2015-08-31\_001.xad

Created: 8/31/2015 10:39:51 AM  
Modified: 8/31/2015 11:02:44 AM

**Electropherogram Summary Continued ...**



**Overall Results for sample 1 : Sample 11**

RNA Area:	500.7	RNA Integrity Number (RIN):	N/A (B.02.08)
RNA Concentration:	2,300 pg/μl	Result Flagging Color:	<span style="background-color: #cccccc; border: 1px solid black; display: inline-block; width: 20px; height: 10px;"></span>
rRNA Ratio [28s / 18s]:	0.0	Result Flagging Label:	RIN N/A

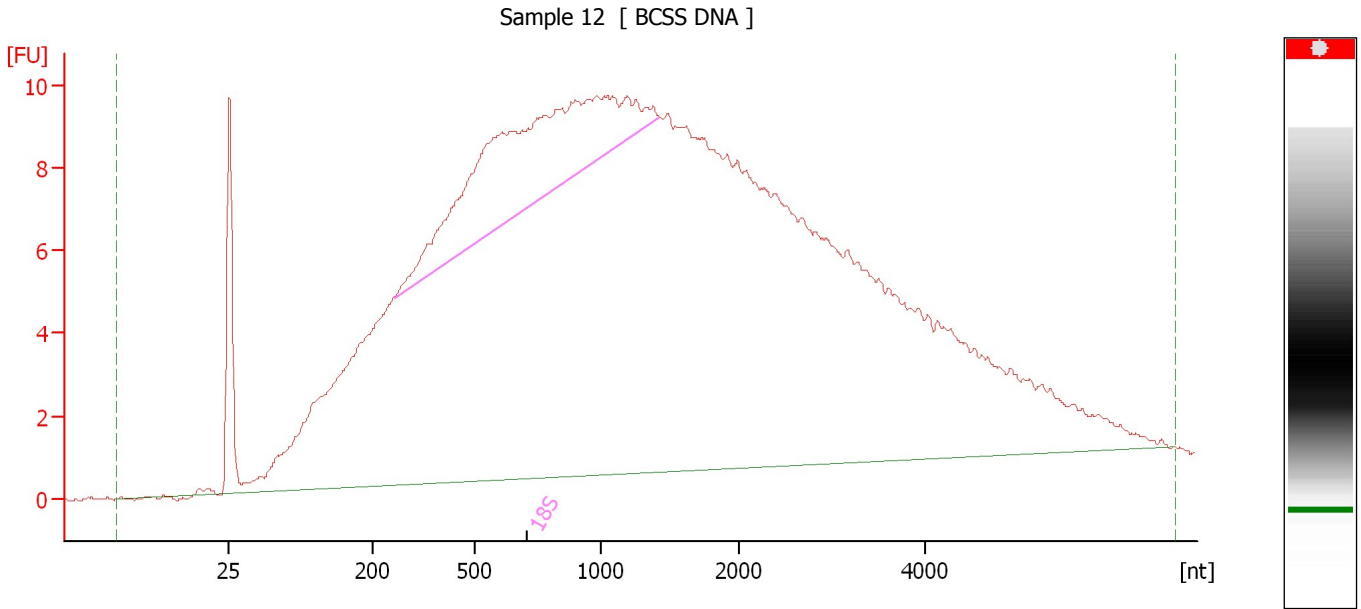
**Fragment table for sample 1 : Sample 11**

Name	Start Size [nt]	End Size [nt]	Area	% of total Area
18S	1,352	1,610	0.5	0.1

Assay Class: Eukaryote Total RNA Pico  
 Data Path: C:\...ents and Settings\Bioanalyzer\2015-08-31\2015-08-31\_001.xad

Created: 8/31/2015 10:39:51 AM  
 Modified: 8/31/2015 11:02:44 AM

**Electropherogram Summary Continued ...**



**Overall Results for sample 2 : Sample 12**

RNA Area:	482.9	RNA Integrity Number (RIN):	N/A (B.02.08)
RNA Concentration:	2,219 pg/μl	Result Flagging Color:	<span style="background-color: #cccccc; border: 1px solid black; display: inline-block; width: 20px; height: 10px;"></span>
rRNA Ratio [28s / 18s]:	0.0	Result Flagging Label:	RIN N/A

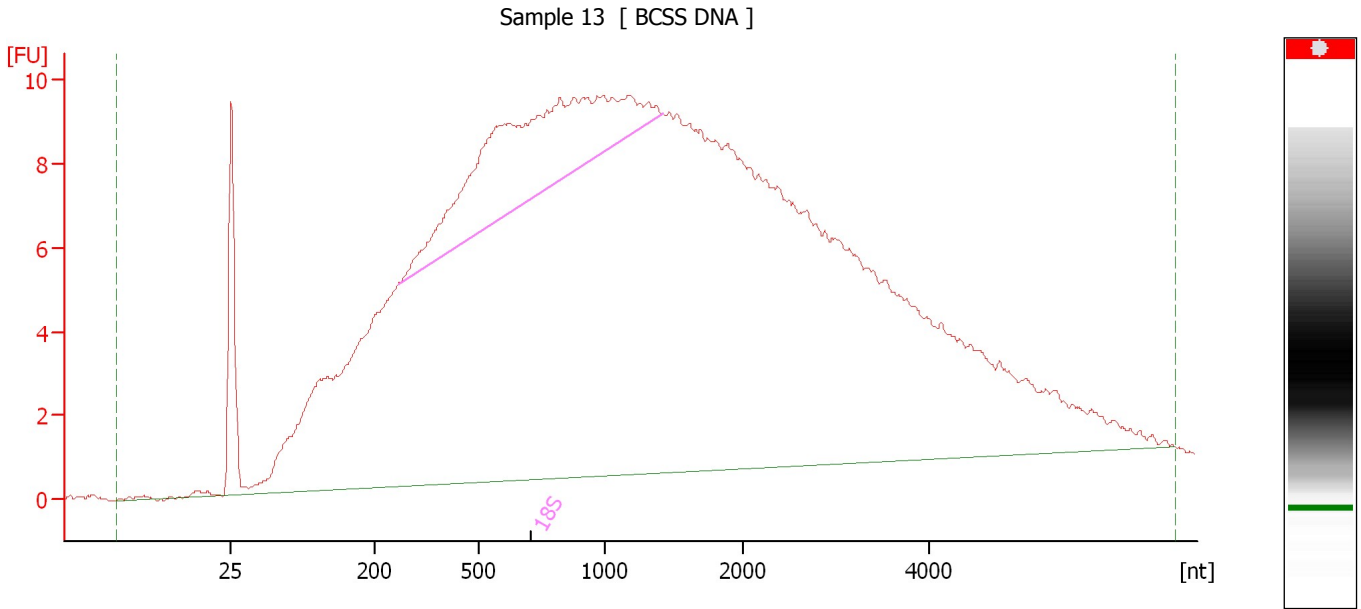
**Fragment table for sample 2 : Sample 12**

Name	Start Size [nt]	End Size [nt]	Area	% of total Area
18S	264	1,426	42.6	8.8


Assay Class: Eukaryote Total RNA Pico  
Data Path: C:\...ents and Settings\Bioanalyzer\2015-08-31\2015-08-31\_001.xad

Created: 8/31/2015 10:39:51 AM  
Modified: 8/31/2015 11:02:44 AM

**Electropherogram Summary Continued ...**



**Overall Results for sample 3 : Sample 13**

RNA Area:	488.0	RNA Integrity Number (RIN):	N/A (B.02.08)
RNA Concentration:	2,242 pg/μl	Result Flagging Color:	
rRNA Ratio [28s / 18s]:	0.0	Result Flagging Label:	RIN N/A

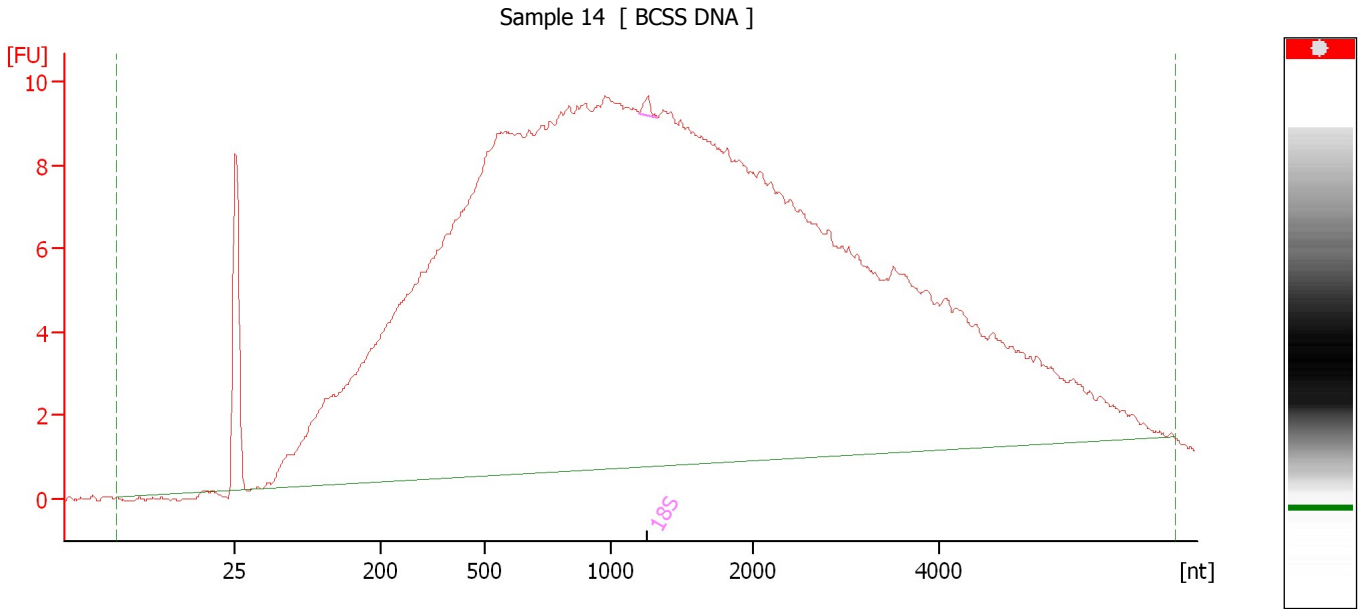
**Fragment table for sample 3 : Sample 13**

Name	Start Size [nt]	End Size [nt]	Area	% of total Area
18S	266	1,414	40.0	8.2

Assay Class: Eukaryote Total RNA Pico  
Data Path: C:\...ents and Settings\Bioanalyzer\2015-08-31\2015-08-31\_001.xad

Created: 8/31/2015 10:39:51 AM  
Modified: 8/31/2015 11:02:44 AM

**Electropherogram Summary Continued ...**



**Overall Results for sample 4 : Sample 14**

RNA Area:	463.7	RNA Integrity Number (RIN):	N/A (B.02.08)
RNA Concentration:	2,130 pg/μl	Result Flagging Color:	<span style="background-color: #cccccc; border: 1px solid black; display: inline-block; width: 20px; height: 10px;"></span>
rRNA Ratio [28s / 18s]:	0.0	Result Flagging Label:	RIN N/A

**Fragment table for sample 4 : Sample 14**

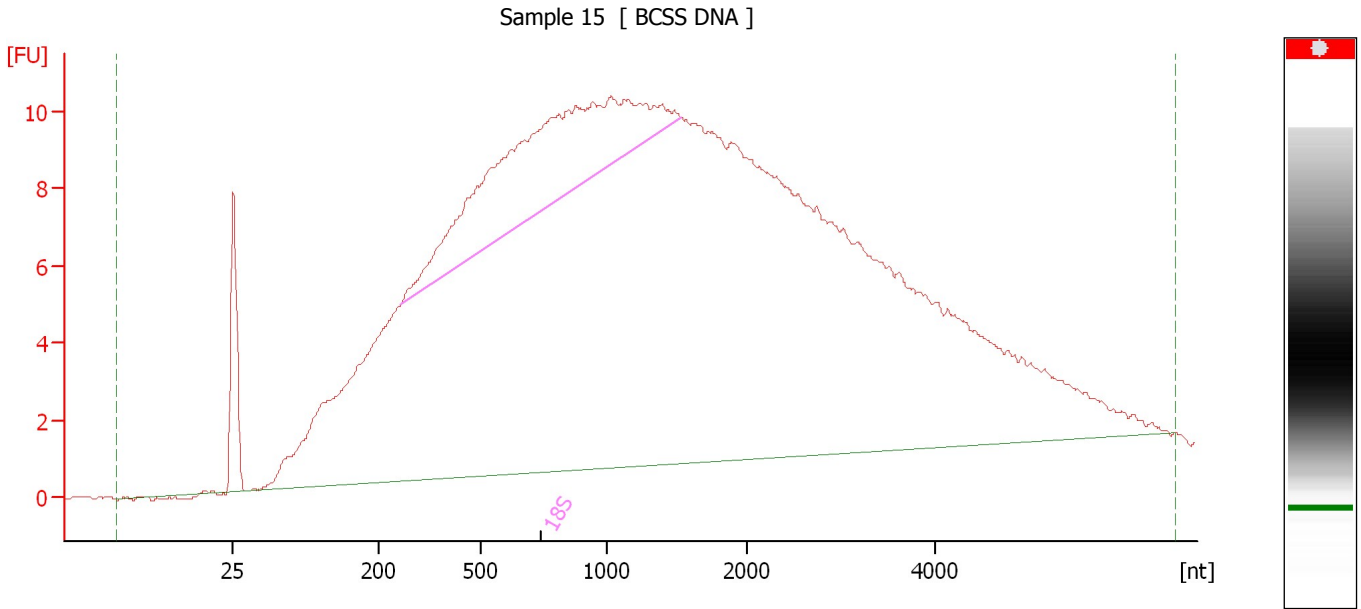
Name	Start Size [nt]	End Size [nt]	Area	% of total Area
18S	1,199	1,328	0.3	0.1



Assay Class: Eukaryote Total RNA Pico  
 Data Path: C:\...ents and Settings\Bioanalyzer\2015-08-31\2015-08-31\_001.xad

Created: 8/31/2015 10:39:51 AM  
 Modified: 8/31/2015 11:02:44 AM

**Electropherogram Summary Continued ...**



**Overall Results for sample 5 : Sample 15**

RNA Area:	500.3	RNA Integrity Number (RIN):	N/A (B.02.08)
RNA Concentration:	2,298 pg/μl	Result Flagging Color:	<span style="background-color: #cccccc; border: 1px solid black; display: inline-block; width: 20px; height: 10px;"></span>
rRNA Ratio [28s / 18s]:	0.0	Result Flagging Label:	RIN N/A

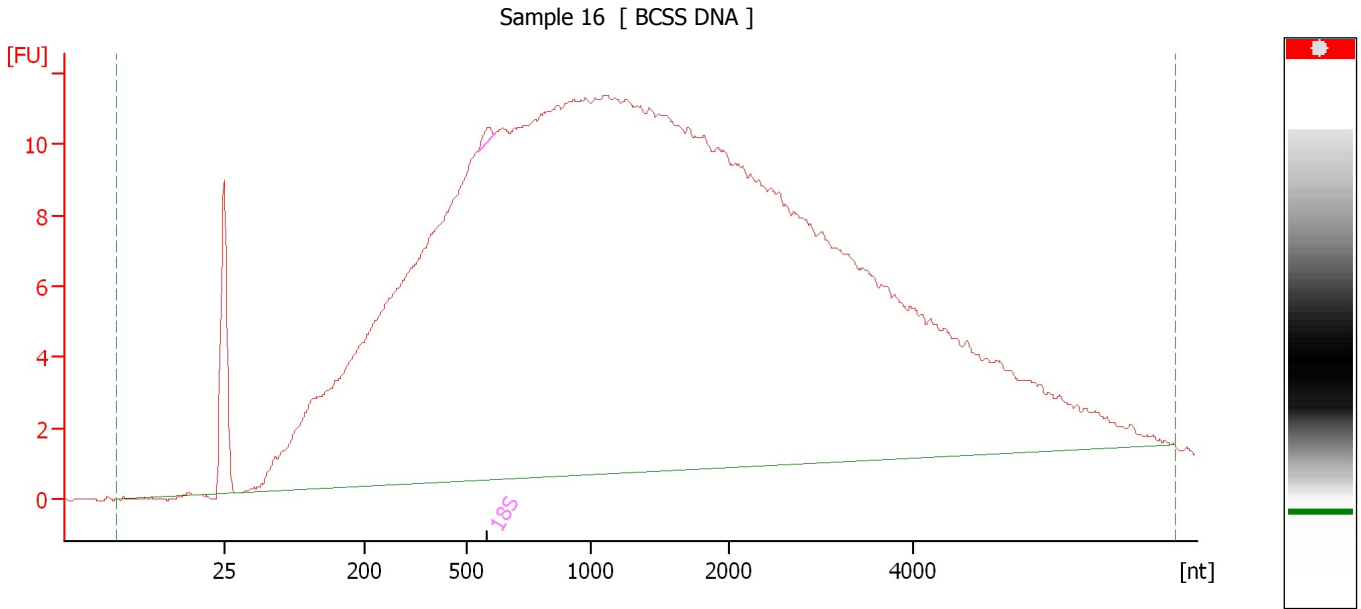
**Fragment table for sample 5 : Sample 15**

Name	Start Size [nt]	End Size [nt]	Area	% of total Area
18S	267	1,516	46.9	9.4

Assay Class: Eukaryote Total RNA Pico  
Data Path: C:\...ents and Settings\Bioanalyzer\2015-08-31\2015-08-31\_001.xad

Created: 8/31/2015 10:39:51 AM  
Modified: 8/31/2015 11:02:44 AM

**Electropherogram Summary Continued ...**



**Overall Results for sample 6 : Sample 16**

RNA Area:	561.7	RNA Integrity Number (RIN):	N/A (B.02.08)
RNA Concentration:	2,580 pg/μl	Result Flagging Color:	<span style="background-color: #cccccc; border: 1px solid black; display: inline-block; width: 20px; height: 10px;"></span>
rRNA Ratio [28s / 18s]:	0.0	Result Flagging Label:	RIN N/A

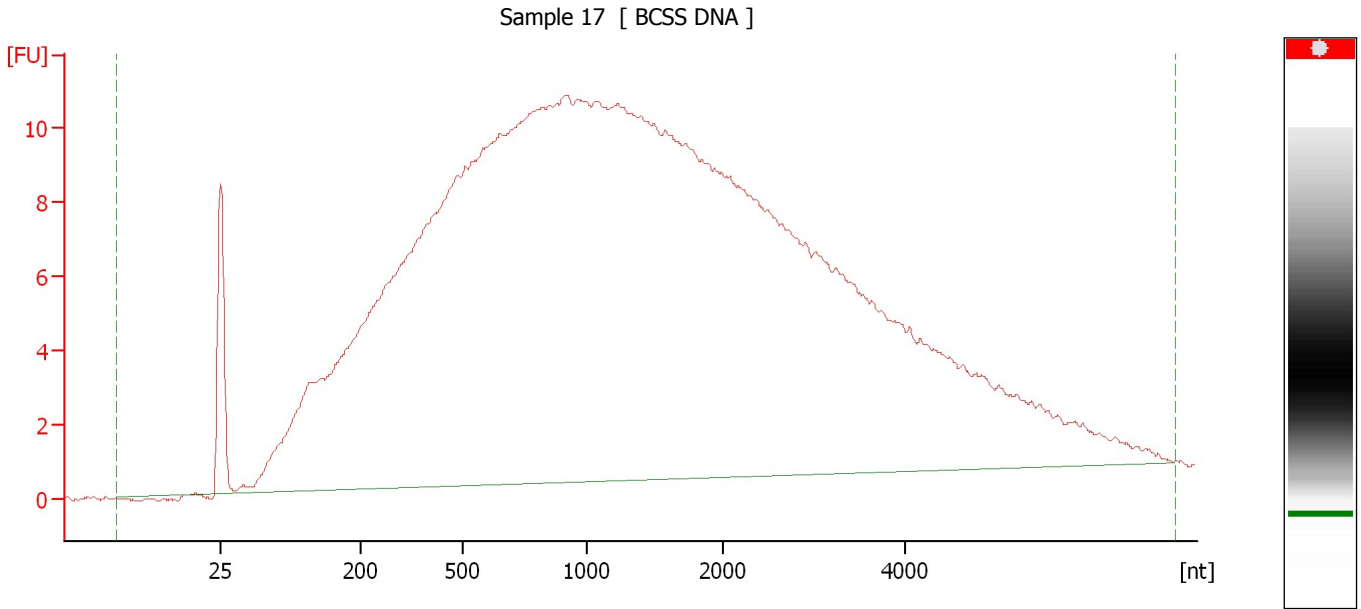
**Fragment table for sample 6 : Sample 16**

Name	Start Size [nt]	End Size [nt]	Area	% of total Area
18S	544	608	0.5	0.1

Assay Class: Eukaryote Total RNA Pico  
Data Path: C:\...ents and Settings\Bioanalyzer\2015-08-31\2015-08-31\_001.xad

Created: 8/31/2015 10:39:51 AM  
Modified: 8/31/2015 11:02:44 AM

**Electropherogram Summary Continued ...**



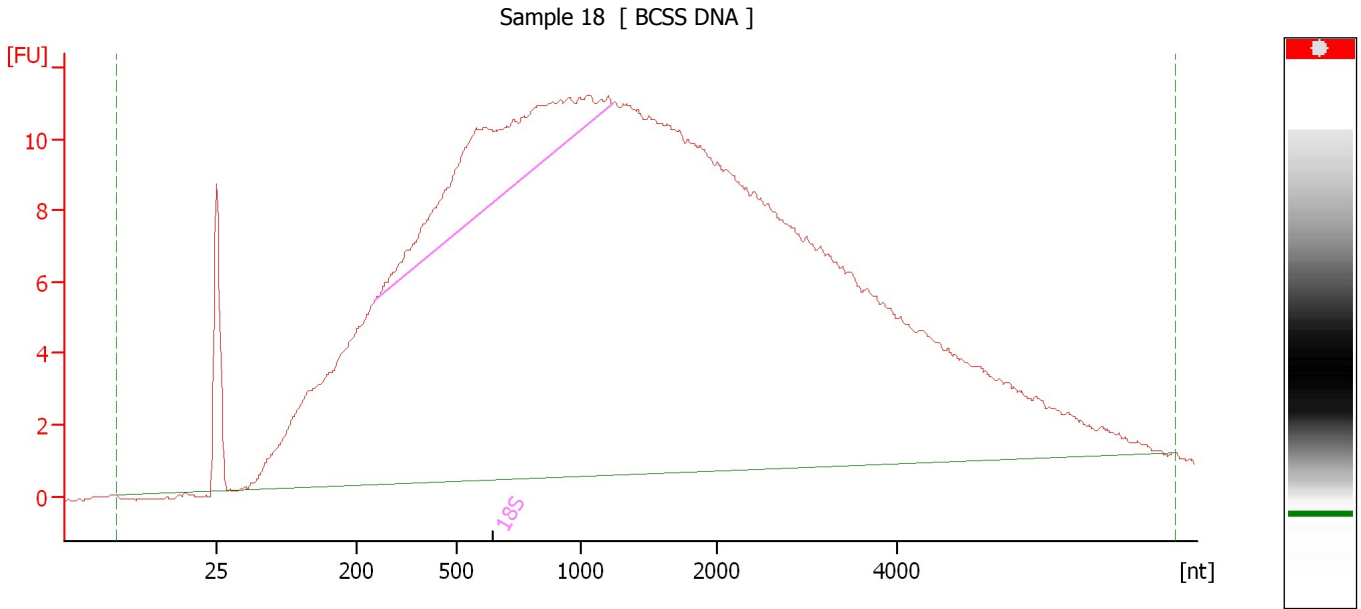
**Overall Results for sample 7 : Sample 17**

RNA Area:	550.8	RNA Integrity Number (RIN):	N/A (B.02.08)
RNA Concentration:	2,530 pg/ $\mu$ l	Result Flagging Color:	<span style="background-color: #cccccc; border: 1px solid black; display: inline-block; width: 20px; height: 10px;"></span>
rRNA Ratio [28s / 18s]:	0.0	Result Flagging Label:	RIN N/A

Assay Class: Eukaryote Total RNA Pico  
Data Path: C:\...ents and Settings\Bioanalyzer\2015-08-31\2015-08-31\_001.xad

Created: 8/31/2015 10:39:51 AM  
Modified: 8/31/2015 11:02:44 AM

**Electropherogram Summary Continued ...**



**Overall Results for sample 8 : Sample 18**

RNA Area:	566.8	RNA Integrity Number (RIN):	N/A (B.02.08)
RNA Concentration:	2,604 pg/μl	Result Flagging Color:	
rRNA Ratio [28s / 18s]:	0.0	Result Flagging Label:	RIN N/A

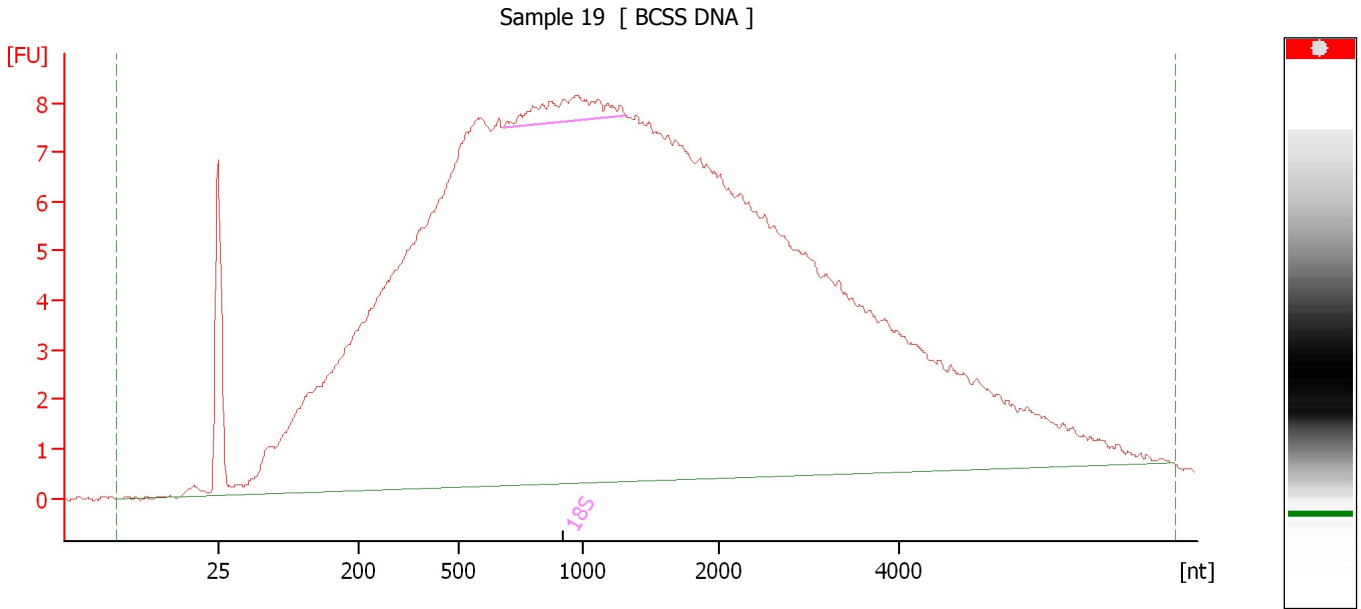
**Fragment table for sample 8 : Sample 18**

Name	Start Size [nt]	End Size [nt]	Area	% of total Area
18S	254	1,245	37.9	6.7

Assay Class: Eukaryote Total RNA Pico  
Data Path: C:\...ents and Settings\Bioanalyzer\2015-08-31\2015-08-31\_001.xad

Created: 8/31/2015 10:39:51 AM  
Modified: 8/31/2015 11:02:44 AM

**Electropherogram Summary Continued ...**



**Overall Results for sample 9 : Sample 19**

RNA Area:	413.1	RNA Integrity Number (RIN):	N/A (B.02.08)
RNA Concentration:	1,898 pg/μl	Result Flagging Color:	<span style="background-color: #cccccc; border: 1px solid black; display: inline-block; width: 20px; height: 10px;"></span>
rRNA Ratio [28s / 18s]:	0.0	Result Flagging Label:	RIN N/A

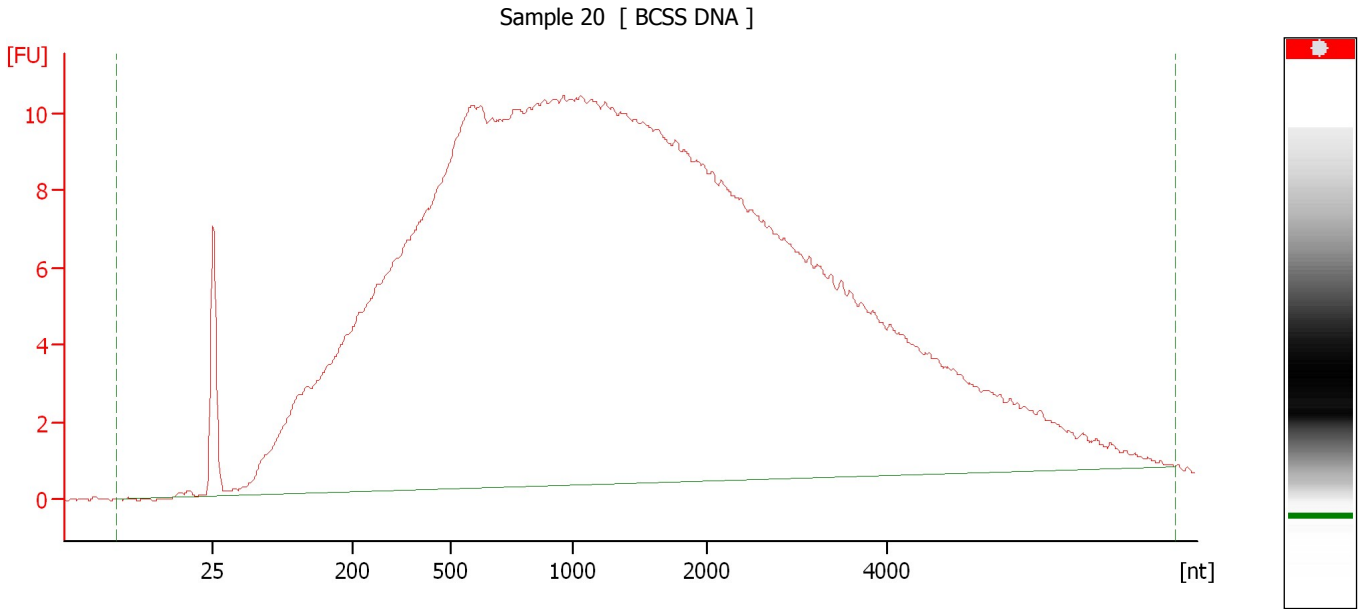
**Fragment table for sample 9 : Sample 19**

Name	Start Size [nt]	End Size [nt]	Area	% of total Area
18S	676	1,318	4.0	1.0


Assay Class: Eukaryote Total RNA Pico  
Data Path: C:\...ents and Settings\Bioanalyzer\2015-08-31\2015-08-31\_001.xad

Created: 8/31/2015 10:39:51 AM  
Modified: 8/31/2015 11:02:44 AM

**Electropherogram Summary Continued ...**



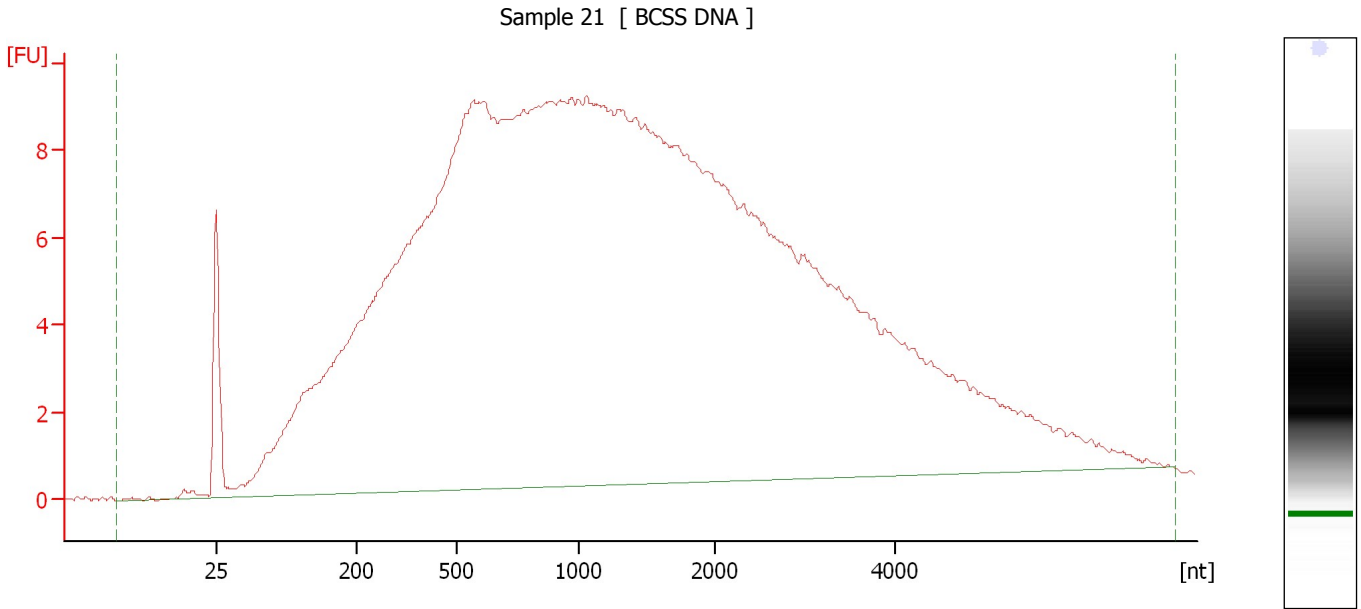
**Overall Results for sample 10 : Sample 20**

RNA Area:	540.0	RNA Integrity Number (RIN):	N/A (B.02.08)
RNA Concentration:	2,481 pg/ $\mu$ l	Result Flagging Color:	
rRNA Ratio [28s / 18s]:	0.0	Result Flagging Label:	RIN N/A

Assay Class: Eukaryote Total RNA Pico  
Data Path: C:\...ents and Settings\Bioanalyzer\2015-08-31\2015-08-31\_001.xad

Created: 8/31/2015 10:39:51 AM  
Modified: 8/31/2015 11:02:44 AM

**Electropherogram Summary Continued ...**



**Overall Results for sample 11 : Sample 21**

RNA Area:	473.9	RNA Integrity Number (RIN):	2.1 (B.02.08)
RNA Concentration:	2,177 pg/ $\mu$ l	Result Flagging Color:	<span style="background-color: #ccccff; border: 1px solid black; display: inline-block; width: 20px; height: 10px;"></span>
rRNA Ratio [28s / 18s]:	0.0	Result Flagging Label:	RIN: 2.10

Assay Class: Eukaryote Total RNA Pico  
Data Path: C:\...ents and Settings\Bioanalyzer\2015-08-31\2015-08-31\_001.xad

Created: 8/31/2015 10:39:51 AM  
Modified: 8/31/2015 11:02:44 AM

**Gel Image**

