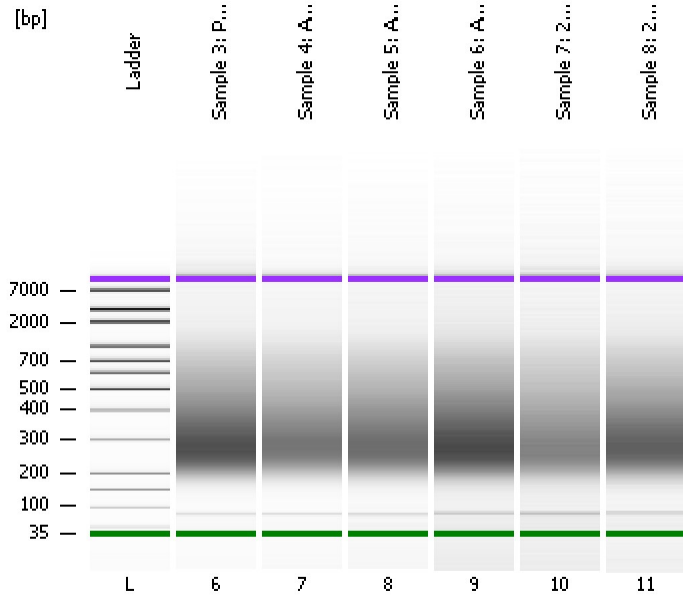


Assay Class: High Sensitivity DNA Assay
Data Path: C:\...lyzer\2015-09-11\2015-09-11_001_HiSeq184_Libraries_2of3.xad

Created: 9/11/2015 11:51:55 AM
Modified: 9/11/2015 12:49:36 PM

Electrophoresis File Run Summary



Instrument Information:

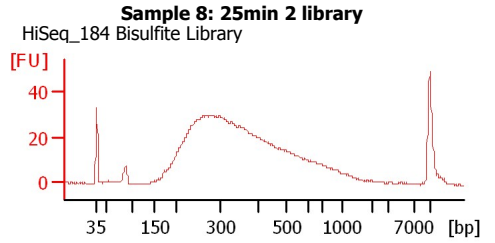
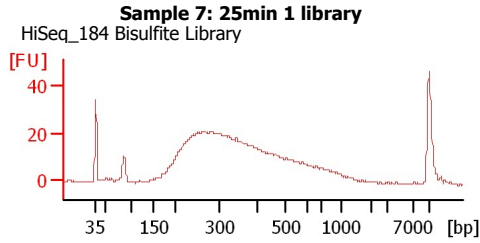
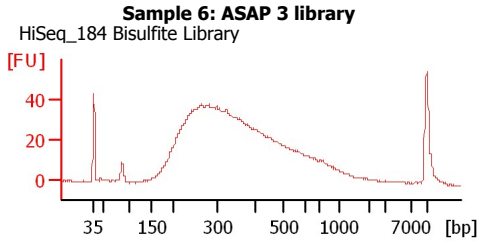
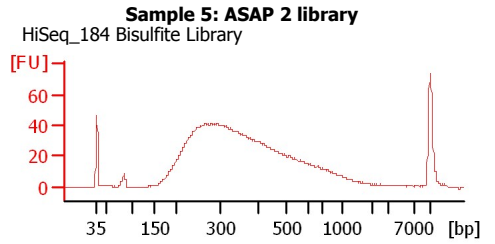
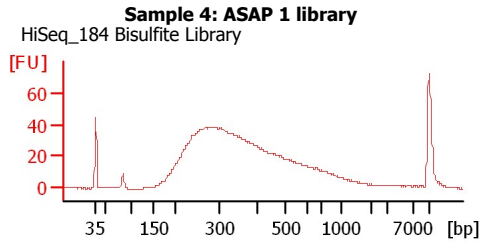
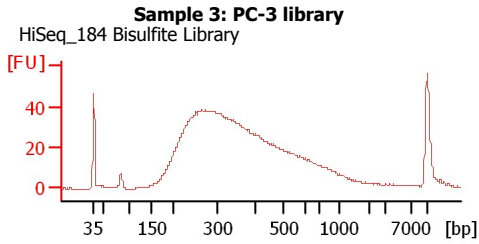
Instrument Name: DE13701086 Firmware: C.01.069
Serial#: DE13701086 Type: G2938B

Assay Information:

Assay Origin Path: C:\Program Files\Agilent\2100 bioanalyzer\2100 expert\assays\dsDNA\High Sensitivity DNA.xsy
Assay Class: High Sensitivity DNA Assay
Version: 1.03
Assay Comments: Copyright © 2003-2010 Agilent Technologies

Chip Information:

Chip Lot #:
Reagent Kit Lot #:
Chip Comments:



Assay Class: High Sensitivity DNA Assay
Data Path: C:\...lyzer\2015-09-11\2015-09-11_001_HiSeq184_Libraries_2of3.xad

Created: 9/11/2015 11:51:55 AM
Modified: 9/11/2015 12:49:36 PM

Electrophoresis File Run Summary (Chip Summary)

Sample Name	Sample Comment	Rest. Digest	Status	Observation	Result Label	Result Color
Sample 3: PC-3 library	HiSeq_184 Bisulfite Library	<input type="checkbox"/>	✓			
Sample 4: ASAP 1 library	HiSeq_184 Bisulfite Library	<input type="checkbox"/>	✓			
Sample 5: ASAP 2 library	HiSeq_184 Bisulfite Library	<input type="checkbox"/>	✓			
Sample 6: ASAP 3 library	HiSeq_184 Bisulfite Library	<input type="checkbox"/>	✓			
Sample 7: 25min 1 library	HiSeq_184 Bisulfite Library	<input type="checkbox"/>	✓			
Sample 8: 25min 2 library	HiSeq_184 Bisulfite Library	<input type="checkbox"/>	✓			
Ladder		<input type="checkbox"/>	✓			

Chip Lot #**Reagent Kit Lot #****Chip Comments :**

Assay Class: High Sensitivity DNA Assay
 Data Path: C:\...lyzer\2015-09-11\2015-09-11_001_HiSeq184_Libraries_2of3.xad

Created: 9/11/2015 11:51:55 AM
 Modified: 9/11/2015 12:49:36 PM

Electrophoresis Assay Details

General Analysis Settings

Number of Available Sample and Ladder Wells (Max.) : 12
 Minimum Visible Range [s] : 32
 Maximum Visible Range [s] : 138
 Start Analysis Time Range [s] : 33
 End Analysis Time Range [s] : 137.5
 Ladder Concentration [pg/μl] : 1950
 Uses Standard Area for Ladder Fragments
 Lower Marker Concentration [pg/μl] : 125
 Upper Marker Concentration [pg/μl] : 75
 Used Upper Marker for Quantitation
 Standard Curve Fit is Point to Point
 Show Data Aligned to Lower and Upper Marker

Integrator Settings

Integration Start Time [s] : 33.05
 Integration End Time [s] : 137
 Slope Threshold : 0.8
 Height Threshold [FU] : 5
 Area Threshold : 0.1
 Width Threshold [s] : 0.6
 Baseline Plateau [s] : 0.5

Filter Settings

Filter Width [s] : 0.5
 Polynomial Order : 4

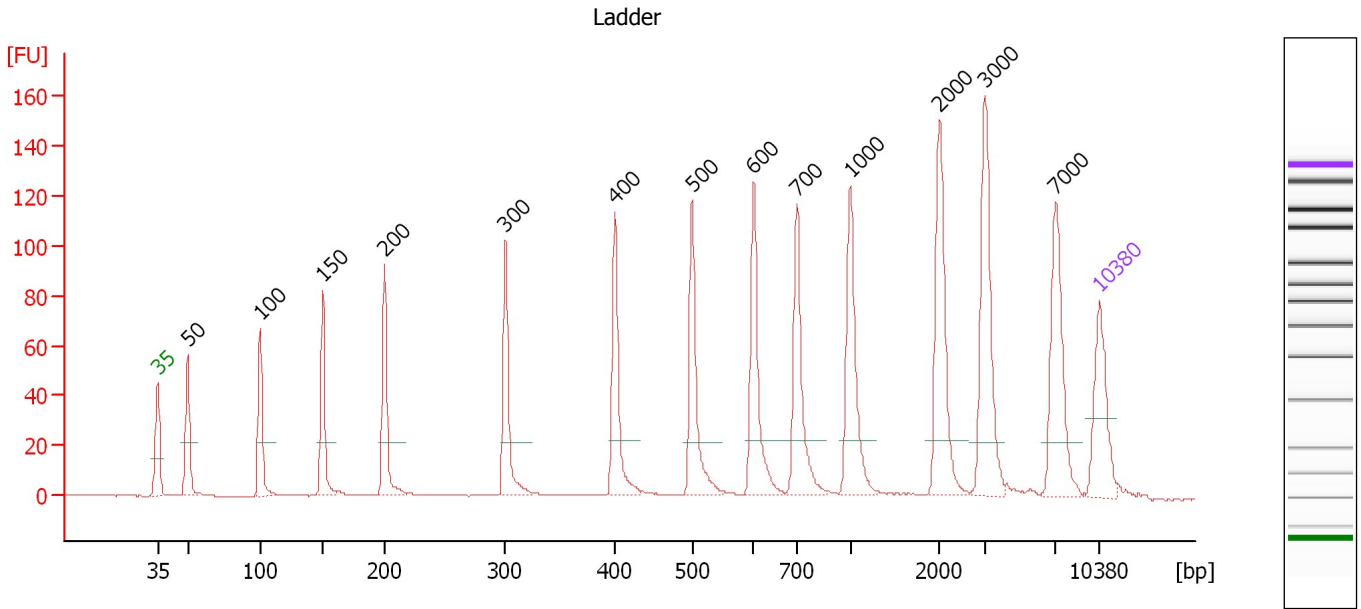
Ladder

Ladder Peak	Size	Area
1	35	160
2	50	210
3	100	208
4	150	221
5	200	242
6	300	270
7	400	305
8	500	306
9	600	336
10	700	321
11	1000	366
12	2000	413
13	3000	411
14	7000	400
15	10380	214

Assay Class: High Sensitivity DNA Assay
 Data Path: C:\...lyzer\2015-09-11\2015-09-11_001_HiSeq184_Libraries_2of3.xad

Created: 9/11/2015 11:51:55 AM
 Modified: 9/11/2015 12:49:36 PM

Electropherogram Summary



Overall Results for Ladder

Noise: 0.1

Peak table for Ladder

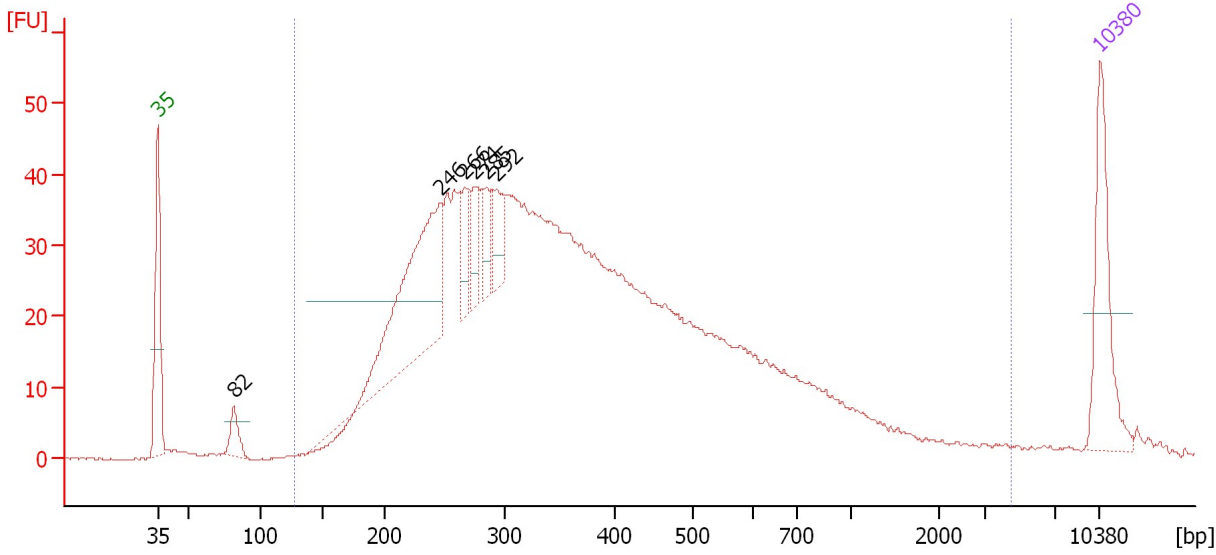
Peak	Size [bp]	Conc. [pg/μl]	Molarity [pmol/l]	Observations	Aligned Migration Time [s]
1	35	125.00	5,411.3	Lower Marker	43.00
2	50	150.00	4,545.5	Ladder Peak	45.22
3	100	150.00	2,272.7	Ladder Peak	50.60
4	150	150.00	1,515.2	Ladder Peak	55.28
5	200	150.00	1,136.4	Ladder Peak	59.86
6	300	150.00	757.6	Ladder Peak	68.84
7	400	150.00	568.2	Ladder Peak	76.96
8	500	150.00	454.5	Ladder Peak	82.72
9	600	150.00	378.8	Ladder Peak	87.26
10	700	150.00	324.7	Ladder Peak	90.47
11	1,000	150.00	227.3	Ladder Peak	94.44
12	2,000	150.00	113.6	Ladder Peak	101.10
13	3,000	150.00	75.8	Ladder Peak	104.40
14	7,000	150.00	32.5	Ladder Peak	109.69
15	10,380	75.00	10.9	Upper Marker	113.00

Assay Class: High Sensitivity DNA Assay
 Data Path: C:\...lyzer\2015-09-11\2015-09-11_001_HiSeq184_Libraries_2of3.xad

Created: 9/11/2015 11:51:55 AM
 Modified: 9/11/2015 12:49:36 PM

Electropherogram Summary Continued ...

Sample 3: PC-3 library [HiSeq_184 Bisulfite Library]



Overall Results for sample 6 : Sample 3: PC-3 library

Number of peaks found: 6 Corr. Area 1: 1,281.6
 Noise: 0.1

Peak table for sample 6 : Sample 3: PC-3 library

Peak	Size [bp]	Conc. [pg/μl]	Molarity [pmol/l]	Observations	Aligned Migration Time [s]
1	35	125.00	5,411.3	Lower Marker	43.00
2	82	28.40	525.0		48.66
3	246	246.26	1,514.3		64.03
4	266	40.47	230.3		65.81
5	274	37.49	207.4		66.49
6	285	33.13	176.2		67.49
7	292	39.54	205.2		68.12
8	10,380	75.00	10.9	Upper Marker	113.00

Region table for sample 6 : Sample 3: PC-3 library

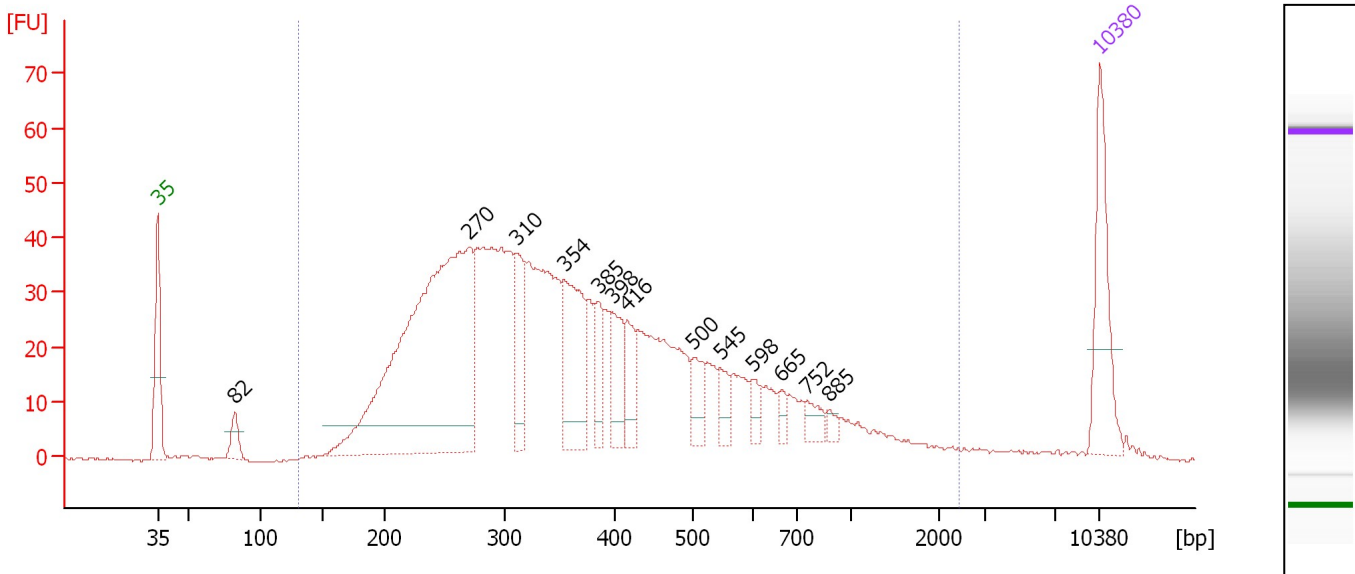
From [bp]	Average Size [bp]	To [bp]	Corr. Area	Molarity [pmol/l]	Co % of Ior Total	Size distribution in CV [%]	Conc. [pg/μl]
128	448	4,511	1,281.6	12,322.4	96	87.8	2,568.43

Assay Class: High Sensitivity DNA Assay
 Data Path: C:\...lyzer\2015-09-11\2015-09-11_001_HiSeq184_Libraries_2of3.xad

Created: 9/11/2015 11:51:55 AM
 Modified: 9/11/2015 12:49:36 PM

Electropherogram Summary Continued ...

Sample 4: ASAP 1 library [HiSeq_184 Bisulfite Library]



Overall Results for sample 7 : Sample 4: ASAP 1 library

Number of peaks found: 13 Corr. Area 1: 1,233.1
 Noise: 0.3

Peak table for sample 7 : Sample 4: ASAP 1 library

Peak	Size [bp]	Conc. [pg/μl]	Molarity [pmol/l]	Observations	Aligned Migration Time [s]
1	35	125.00	5,411.3	Lower Marker	43.00
2	82	25.80	474.9		48.70
3	270	619.90	3,474.5		66.17
4	310	73.06	357.3		69.64
5	354	123.68	529.7		73.21
6	385	39.53	155.7		75.71
7	398	51.15	194.9		76.77
8	416	41.88	152.5		77.89
9	500	32.30	97.8		82.74
10	545	20.78	57.8		84.77
11	598	14.16	35.9		87.16
12	665	10.92	24.9		89.35
13	752	16.88	34.0		91.16
14	885	7.59	13.0		92.92
15	10,380	75.00	10.9	Upper Marker	113.00

Region table for sample 7 : Sample 4: ASAP 1 library

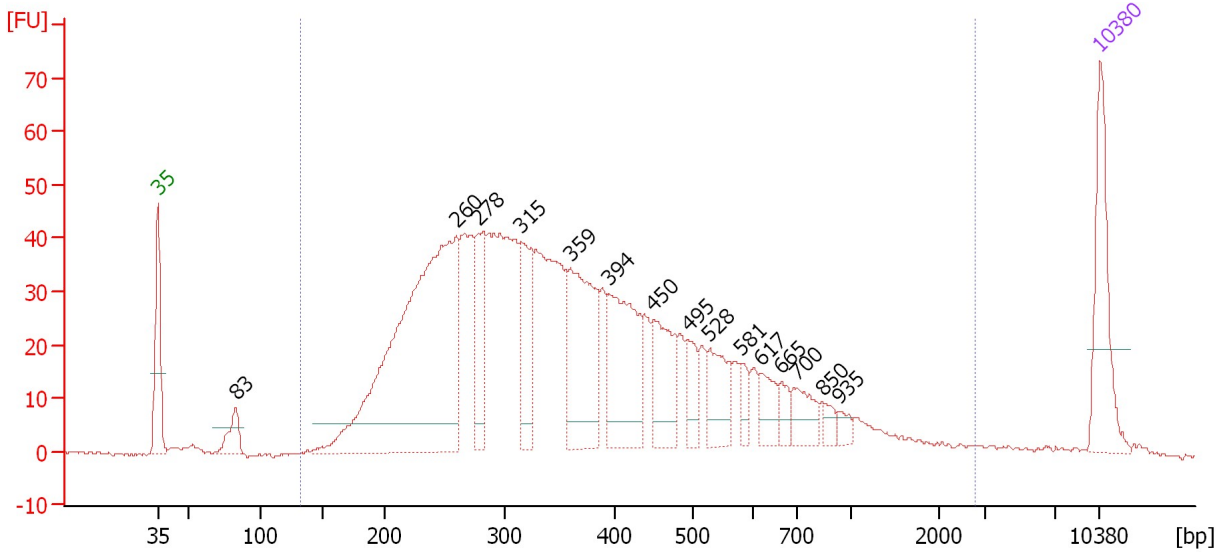
From [bp]	Average Size [bp]	To [bp]	Corr. Area	Molarity [pmol/l]	Co % of lor Total	Size distribution in CV [%]	Conc. [pg/μl]
131	422	2,412	1,233.1	10,243.0	97	64.4	2,158.94

Assay Class: High Sensitivity DNA Assay
 Data Path: C:\...lyzer\2015-09-11\2015-09-11_001_HiSeq184_Libraries_2of3.xad

Created: 9/11/2015 11:51:55 AM
 Modified: 9/11/2015 12:49:36 PM

Electropherogram Summary Continued ...

Sample 5: ASAP 2 library [HiSeq_184 Bisulfite Library]



Overall Results for sample 8 : Sample 5: ASAP 2 library

Number of peaks found: 15 Corr. Area 1: 1,357.3
 Noise: 0.2

Peak table for sample 8 : Sample 5: ASAP 2 library

Peak	Size [bp]	Conc. [pg/μl]	Molarity [pmol/l]	Observations	Aligned Migration Time [s]
1	35	125.00	5,411.3	Lower Marker	43.00
2	83	34.38	626.2		48.79
3	260	560.67	3,272.9		65.21
4	278	84.50	460.4		66.87
5	315	87.35	420.5		70.03
6	359	160.32	676.7		73.63
7	394	143.04	550.1		76.47
8	450	78.69	264.8		79.85
9	495	28.30	86.7		82.43
10	528	50.72	145.6		83.98
11	581	16.77	43.7		86.39
12	617	26.51	65.1		87.79
13	665	17.03	38.8		89.34
14	700	30.70	66.4		90.47
15	850	11.14	19.9		92.46
16	935	8.76	14.2		93.58
17	10,380	75.00	10.9	Upper Marker	113.00

Region table for sample 8 : Sample 5: ASAP 2 library

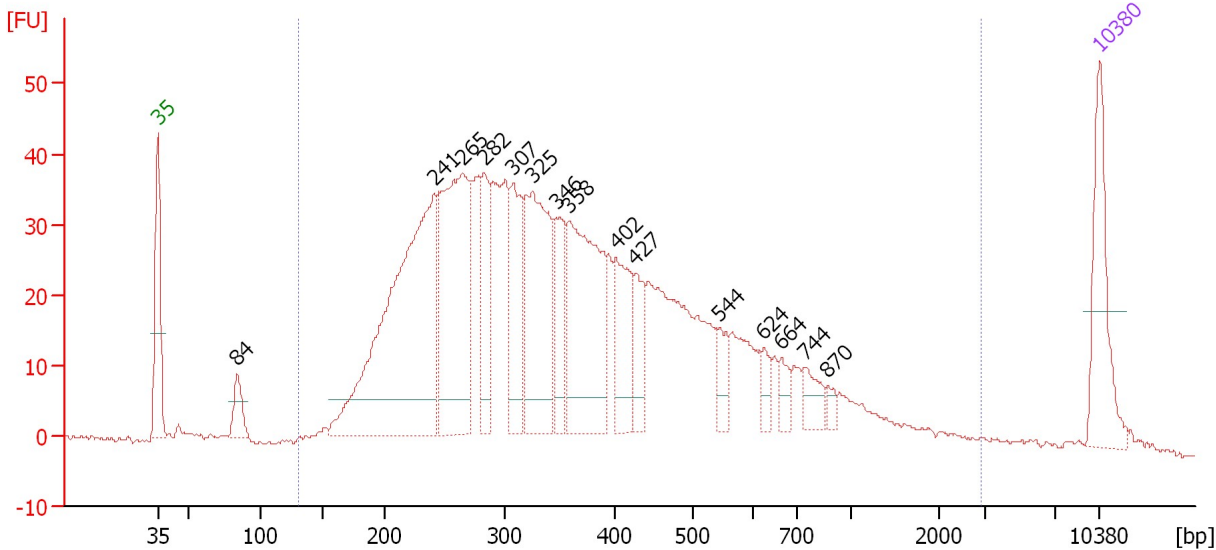
From [bp]	Average Size [bp]	To [bp]	Corr. Area	Molarity [pmol/l]	Co % of Ior Total	Size distribution in CV [%]	Conc. [pg/μl]
131	425	2,791	1,357.3	10,590.9	96	68.2	2,222.57

Assay Class: High Sensitivity DNA Assay
 Data Path: C:\...lyzer\2015-09-11\2015-09-11_001_HiSeq184_Libraries_2of3.xad

Created: 9/11/2015 11:51:55 AM
 Modified: 9/11/2015 12:49:36 PM

Electropherogram Summary Continued ...

Sample 6: ASAP 3 library [HiSeq_184 Bisulfite Library]



Overall Results for sample 9 : Sample 6: ASAP 3 library

Number of peaks found: 15 Corr. Area 1: 1,250.5
 Noise: 0.3

Peak table for sample 9 : Sample 6: ASAP 3 library

Peak	Size [bp]	Conc. [pg/μl]	Molarity [pmol/l]	Observations	Aligned Migration Time [s]
1	35	125.00	5,411.3	Lower Marker	43.00
2	84	34.99	628.5		48.92
3	241	489.52	3,075.9		63.55
4	265	283.79	1,625.6		65.65
5	282	82.04	440.0		67.27
6	307	106.87	527.2		69.42
7	325	204.14	951.6		70.87
8	346	72.45	317.0		72.59
9	358	219.68	929.3		73.56
10	402	77.96	294.1		77.06
11	427	42.58	151.1		78.51
12	544	27.59	76.9		84.70
13	624	16.51	40.1		88.03
14	664	16.14	36.8		89.33
15	744	23.54	48.0		91.05
16	870	8.94	15.6		92.72
17	10,380	75.00	10.9	Upper Marker	113.00

Region table for sample 9 : Sample 6: ASAP 3 library

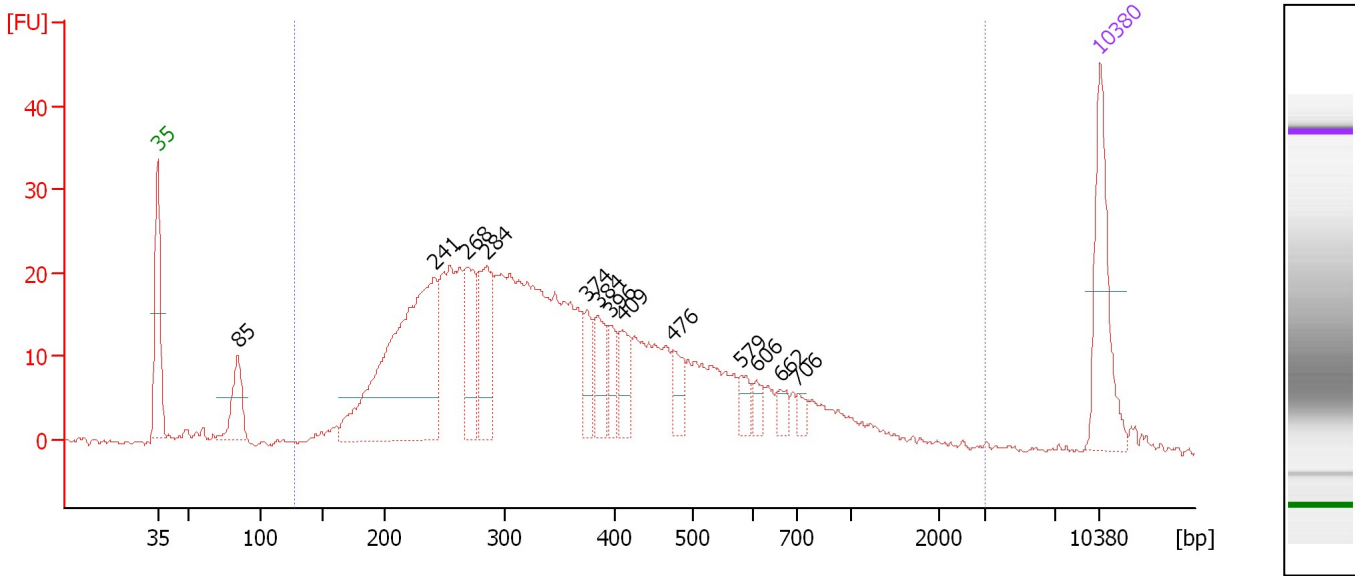
From [bp]	Average Size [bp]	To [bp]	Corr. Area	Molarity [pmol/l]	Co % of Ior Total	Size distribution in CV [%]	Conc. [pg/μl]
130	426	2,934	1,250.5	12,516.3	97	71.5	2,592.69

Assay Class: High Sensitivity DNA Assay
 Data Path: C:\...lyzer\2015-09-11\2015-09-11_001_HiSeq184_Libraries_2of3.xad

Created: 9/11/2015 11:51:55 AM
 Modified: 9/11/2015 12:49:36 PM

Electropherogram Summary Continued ...

Sample 7: 25min 1 library [HiSeq_184 Bisulfite Library]



Overall Results for sample 10 : Sample 7: 25min 1 library

Number of peaks found: 13 Corr. Area 1: 705.8
 Noise: 0.4

Peak table for sample 10 : Sample 7: 25min 1 library

Peak	Size [bp]	Conc. [pg/μl]	Molarity [pmol/l]	Observations	Aligned Migration Time [s]
1	35	125.00	5,411.3	Lower Marker	43.00
2	85	55.95	1,000.0		48.96
3	241	340.60	2,140.5		63.55
4	268	74.48	420.6		65.99
5	284	88.29	471.1		67.40
6	374	32.48	131.4		74.88
7	384	39.38	155.2		75.70
8	396	27.41	104.8		76.67
9	409	33.54	124.2		77.48
10	476	25.01	79.6		81.33
11	579	16.32	42.7		86.32
12	606	11.90	29.7		87.46
13	662	11.48	26.3		89.25
14	706	8.23	17.7		90.55
15	10,380	75.00	10.9	Upper Marker	113.00

Region table for sample 10 : Sample 7: 25min 1 library

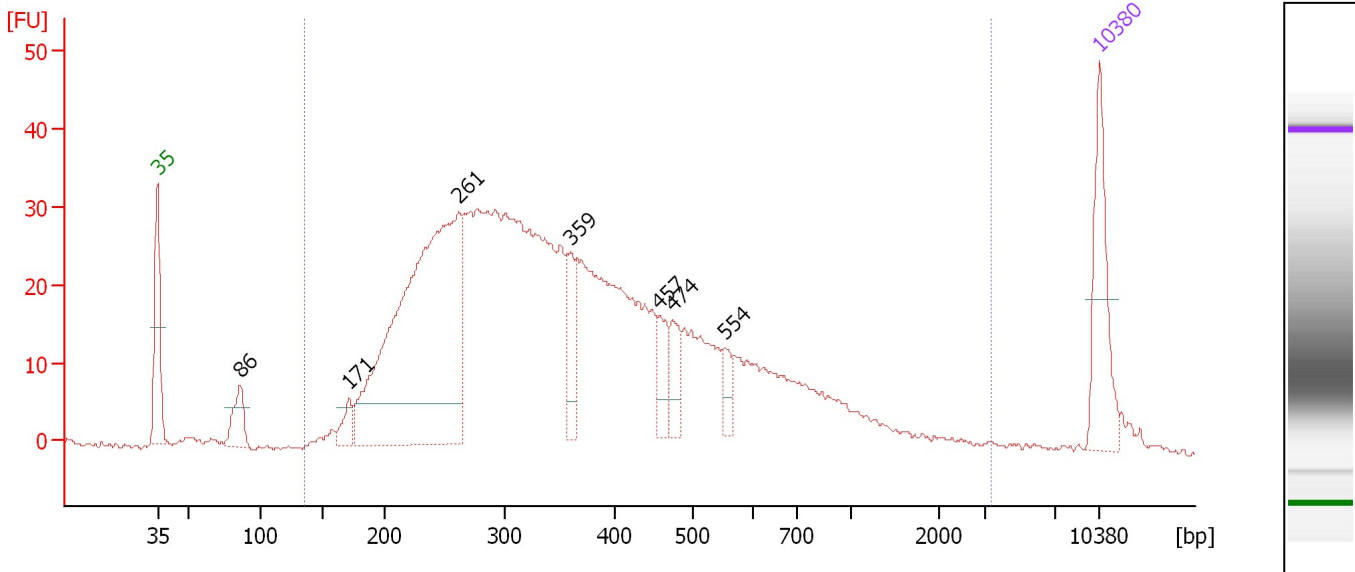
From [bp]	Average Size [bp]	To [bp]	Corr. Area	Molarity [pmol/l]	Co % of Ior Total	Size distribution in CV [%]	Conc. [pg/μl]
127	426	3,071	705.8	8,564.4	94	72.1	1,761.22

Assay Class: High Sensitivity DNA Assay
 Data Path: C:\...lyzer\2015-09-11\2015-09-11_001_HiSeq184_Libraries_2of3.xad

Created: 9/11/2015 11:51:55 AM
 Modified: 9/11/2015 12:49:36 PM

Electropherogram Summary Continued ...

Sample 8: 25min 2 library [HiSeq_184 Bisulfite Library]



Overall Results for sample 11 : Sample 8: 25min 2 library

Number of peaks found: 7 Corr. Area 1: 975.9
 Noise: 0.4

Peak table for sample 11 : Sample 8: 25min 2 library

Peak	Size [bp]	Conc. [pg/μl]	Molarity [pmol/l]	Observations	Aligned Migration Time [s]
1	35	125.00	5,411.3	Lower Marker	43.00
2	86	46.81	822.2		49.12
3	171	25.40	224.8		57.22
4	261	613.68	3,557.9		65.37
5	359	53.27	224.8		73.63
6	457	34.45	114.2		80.24
7	474	34.61	110.6		81.23
8	554	20.71	56.7		85.16
9	10,380	75.00	10.9	Upper Marker	113.00

Region table for sample 11 : Sample 8: 25min 2 library

From [bp]	Average Size [bp]	To [bp]	Corr. Area	Molarity [pmol/l]	Co % of Ior Total	Size distribution in CV [%]	Conc. [pg/μl]
136	429	3,347	975.9	11,598.2	95	73.8	2,411.49

Assay Class: High Sensitivity DNA Assay
Data Path: C:\...lyzer\2015-09-11\2015-09-11_001_HiSeq184_Libraries_2of3.xad

Created: 9/11/2015 11:51:55 AM
Modified: 9/11/2015 12:49:36 PM

Gel Image

