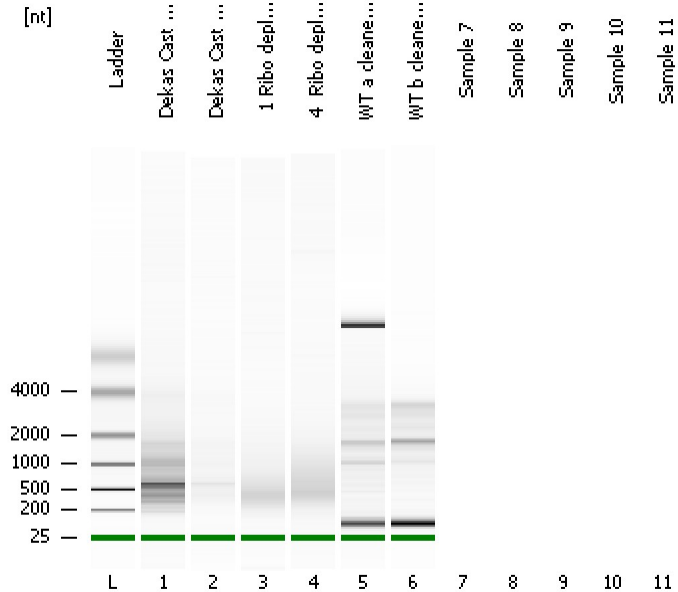


Assay Class: mRNA Pico
Data Path: C:\...ents and Settings\Bioanalyzer\2015-09-17\2015-09-17_001.xad

Created: 9/17/2015 1:07:20 PM
Modified: 9/17/2015 1:25:24 PM

Electrophoresis File Run Summary



Instrument Information:

Instrument Name: DE13701086 Firmware: C.01.069
Serial#: DE13701086 Type: G2938B

Assay Information:

Assay Origin Path: C:\Program Files\Agilent\2100 bioanalyzer\2100 expert\assays\RNA\mRNA Pico Series II.xsy

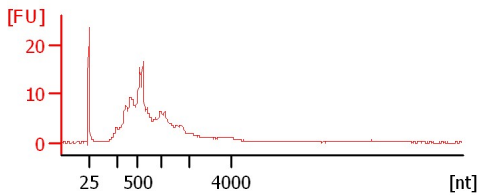
Assay Class: mRNA Pico
Version: 2.6
Assay Comments: mRNA Analysis pg sensitivity

© Copyright 2003 - 2009 Agilent Technologies, Inc.

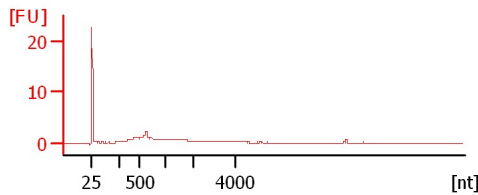
Chip Information:

Chip Lot #:
Reagent Kit Lot #:
Chip Comments:

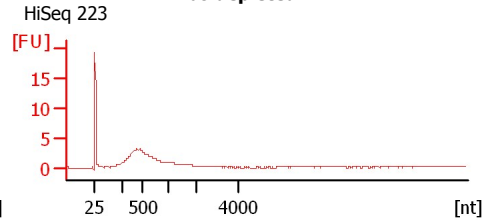
Dekas Cast 1 Ribo depleted RNA



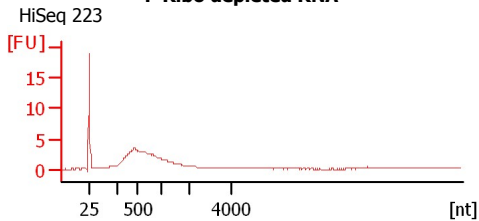
Dekas Cast 7 Ribo depleted RNA



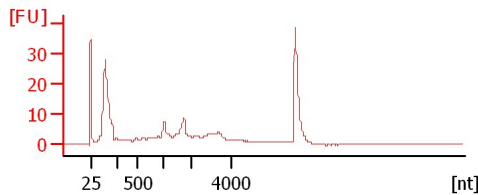
1 Ribo depleted RNA



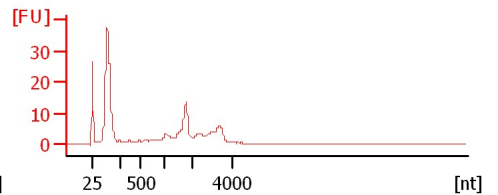
4 Ribo depleted RNA



WT a cleaned total RNA



WT b cleaned total RNA



Assay Class: mRNA Pico
Data Path: C:\...ents and Settings\Bioanalyzer\2015-09-17\2015-09-17_001.xad

Created: 9/17/2015 1:07:20 PM
Modified: 9/17/2015 1:25:24 PM

Electrophoresis File Run Summary (Chip Summary)

Sample Name	Sample Comment	Status	Result Label	Result Color
Dekas Cast 1 Ribo depleted RNA		✓		
Dekas Cast 7 Ribo depleted RNA		✓		
1 Ribo depleted RNA	HiSeq 223	✓		
4 Ribo depleted RNA	HiSeq 223	✓		
WT a cleaned total RNA		✓		
WT b cleaned total RNA		✓		
Sample 7				
Sample 8				
Sample 9				
Sample 10				
Sample 11				
Ladder		✓		

Chip Lot #**Reagent Kit Lot #****Chip Comments :**

Assay Class: mRNA Pico
Data Path: C:\...ents and Settings\Bioanalyzer\2015-09-17\2015-09-17_001.xad

Created: 9/17/2015 1:07:20 PM
Modified: 9/17/2015 1:25:24 PM

Electrophoresis Assay Details

General Analysis Settings

Number of Available Sample and Ladder Wells (Max.) : 12
Minimum Visible Range [s] : 14
Maximum Visible Range [s] : 85
Start Analysis Time Range [s] : 15
End Analysis Time Range [s] : 84
Ladder Concentration [pg/ μ l] : 1000
Lower Marker Concentration [pg/ μ l] : 0
Upper Marker Concentration [pg/ μ l] : 0
Used Lower Marker for Quantitation
Standard Curve Fit is Logarithmic
Show Data Aligned to Lower Marker

Integrator Settings

Integration Start Time [s] : 15
Integration End Time [s] : 84
Slope Threshold : 0.2
Height Threshold [FU] : 0.5
Area Threshold : 0.1
Width Threshold [s] : 0.2
Baseline Plateau [s] : 0.5

Filter Settings

Filter Width [s] : 0.5
Polynomial Order : 4

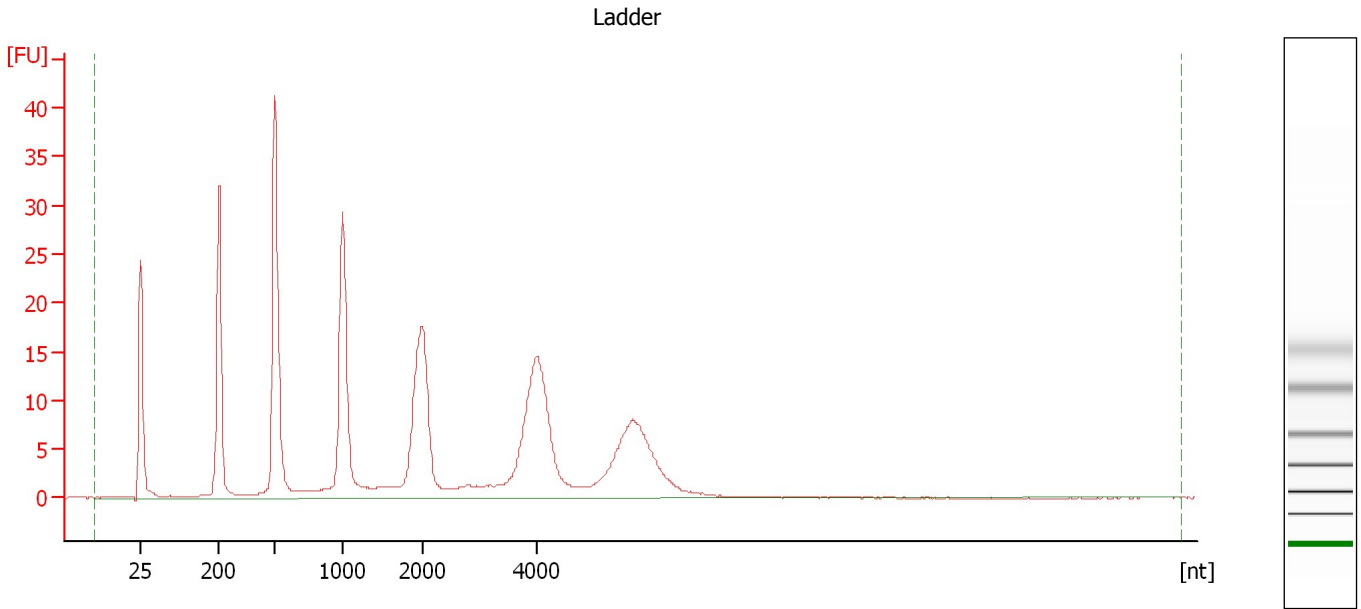
Ladder

Ladder Peak	Size
1	25
2	200
3	500
4	1000
5	2000
6	4000

Assay Class: mRNA Pico
Data Path: C:\...ents and Settings\Bioanalyzer\2015-09-17\2015-09-17_001.xad

Created: 9/17/2015 1:07:20 PM
Modified: 9/17/2015 1:25:24 PM

Electropherogram Summary



Overall Results for Ladder

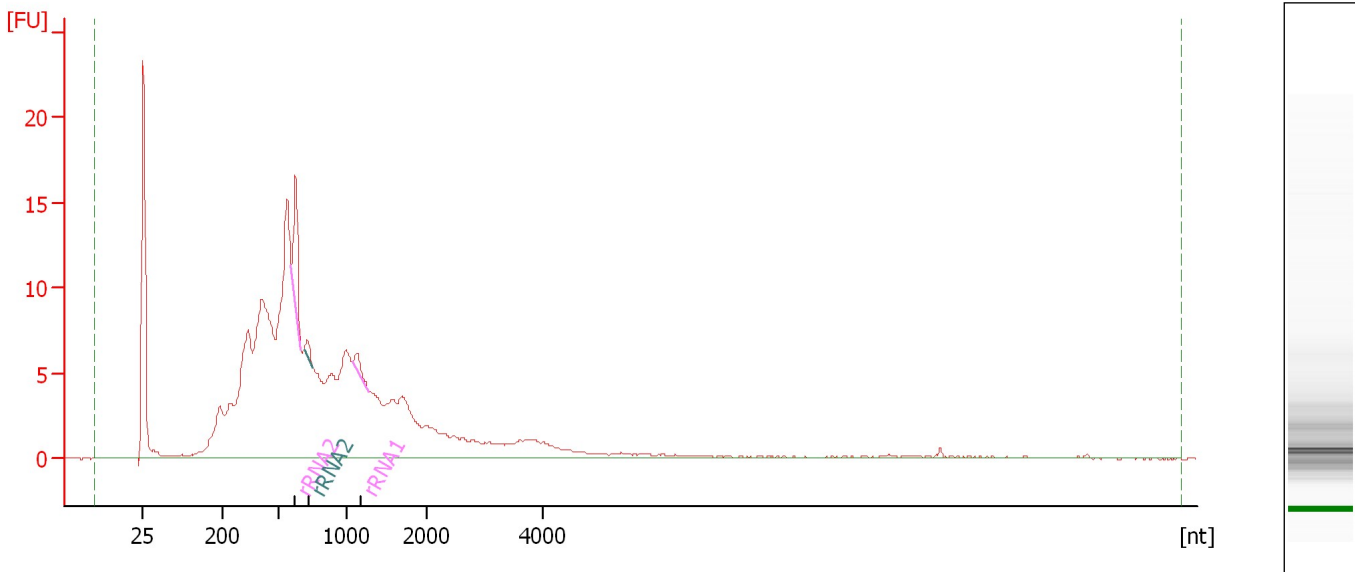
RNA Area: 362.9 RNA Concentration: 1,000 pg/μl

Assay Class: mRNA Pico
Data Path: C:\...ents and Settings\Bioanalyzer\2015-09-17\2015-09-17_001.xad

Created: 9/17/2015 1:07:20 PM
Modified: 9/17/2015 1:25:24 PM

Electropherogram Summary Continued ...

Dekas Cast 1 Ribo depleted RNA



Overall Results for sample 1 : Dekas Cast 1 Ribo depleted RNA

RNA Area: 290.3 rRNA Contamination: 3.4 %
RNA Concentration: 800 pg/μl

Fragment table for sample 1 : Dekas Cast 1 Ribo depleted RNA

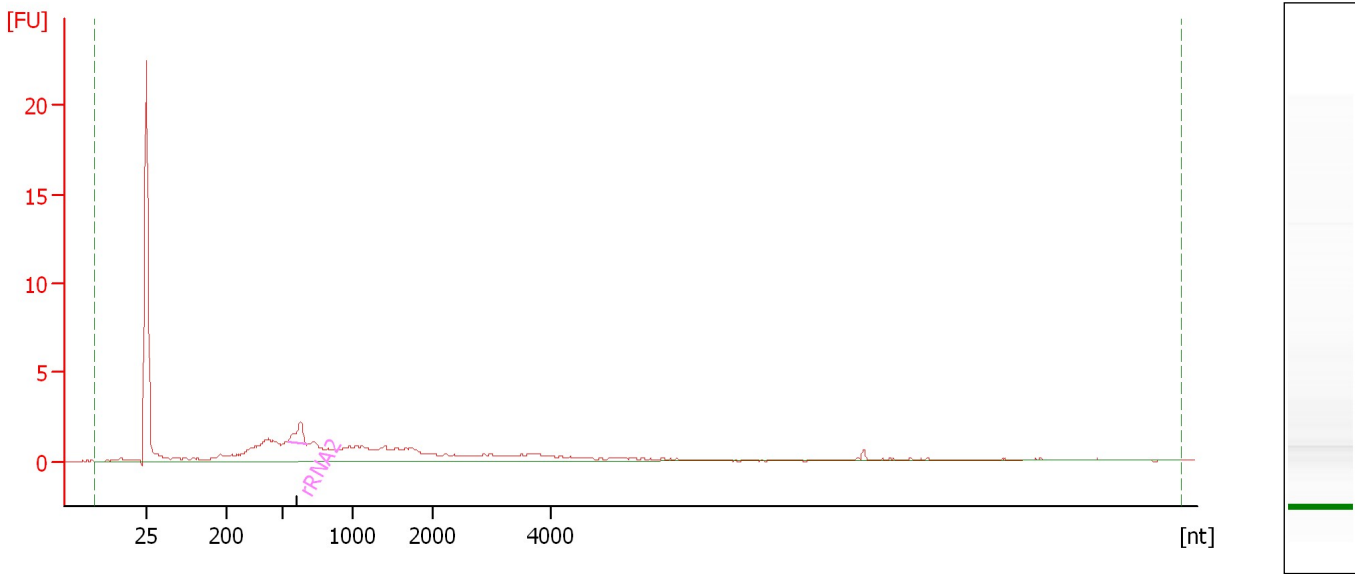
Name	Start Size [nt]	End Size [nt]	Area	% of total Area
rRNA2	597	667	7.4	2.5
rRNA2	690	754	1.0	0.4
rRNA1	1,069	1,277	1.4	0.5

Assay Class: mRNA Pico
Data Path: C:\...ents and Settings\Bioanalyzer\2015-09-17\2015-09-17_001.xad

Created: 9/17/2015 1:07:20 PM
Modified: 9/17/2015 1:25:24 PM

Electropherogram Summary Continued ...

Dekas Cast 7 Ribo depleted RNA



Overall Results for sample 2 : Dekas Cast 7 Ribo depleted RNA

RNA Area: 47.3 rRNA Contamination: 4.8 %
RNA Concentration: 130 pg/μl

Fragment table for sample 2 : Dekas Cast 7 Ribo depleted RNA

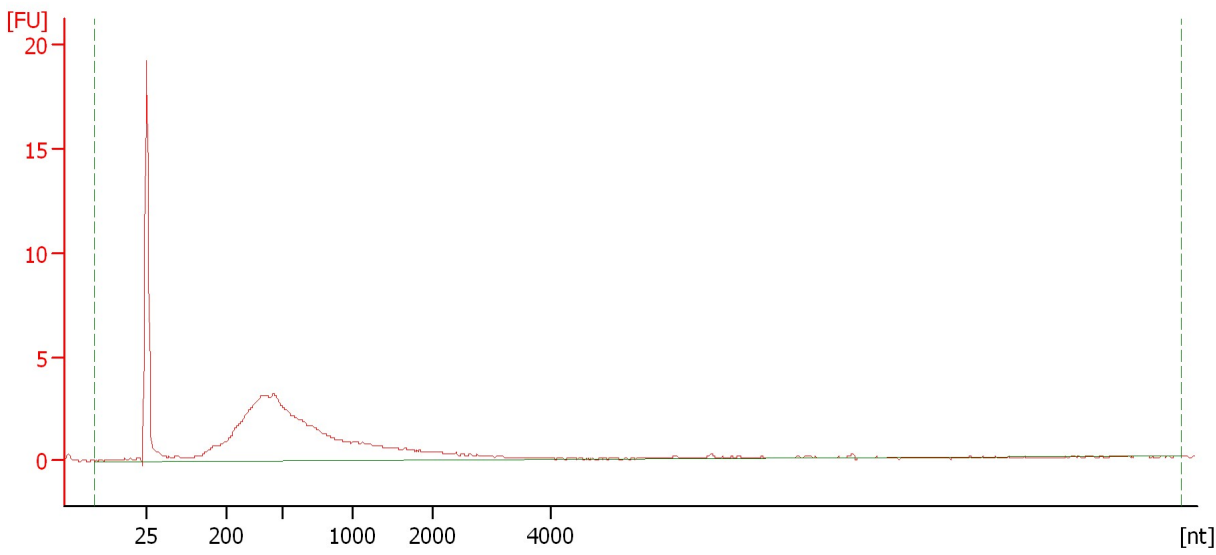
Name	Start Size [nt]	End Size [nt]	Area	% of total Area
rRNA2	533	666	2.3	4.8

Assay Class: mRNA Pico
Data Path: C:\...ents and Settings\Bioanalyzer\2015-09-17\2015-09-17_001.xad

Created: 9/17/2015 1:07:20 PM
Modified: 9/17/2015 1:25:24 PM

Electropherogram Summary Continued ...

1 Ribo depleted RNA [HiSeq 223]



Overall Results for sample 3 : 1 Ribo depleted RNA

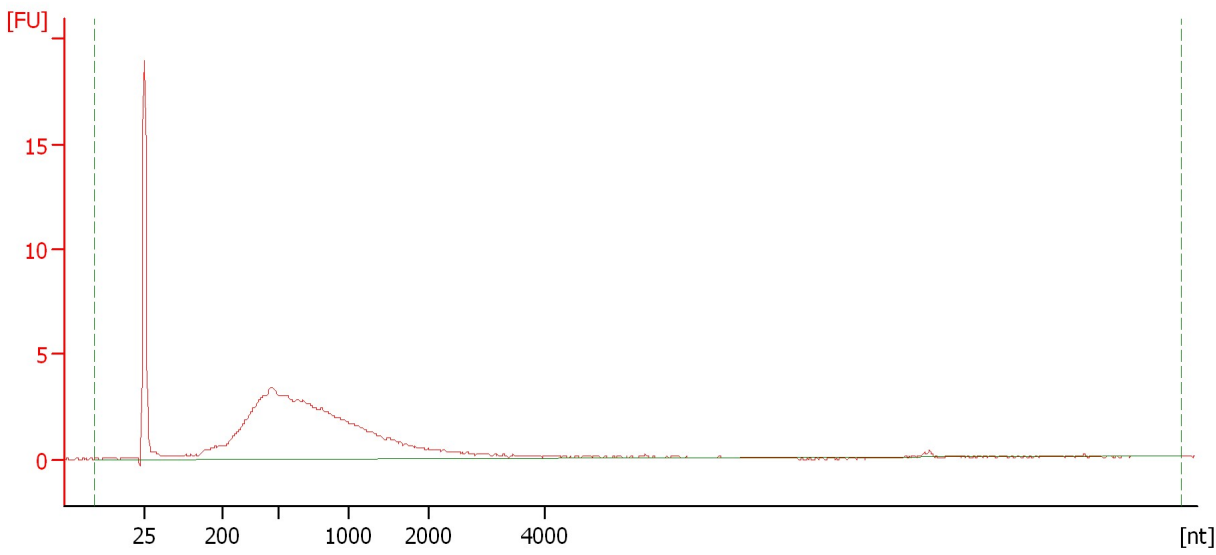
RNA Area: 77.1 rRNA Contamination: 0.0 %
RNA Concentration: 212 pg/μl

Assay Class: mRNA Pico
Data Path: C:\...ents and Settings\Bioanalyzer\2015-09-17\2015-09-17_001.xad

Created: 9/17/2015 1:07:20 PM
Modified: 9/17/2015 1:25:24 PM

Electropherogram Summary Continued ...

4 Ribo depleted RNA [HiSeq 223]



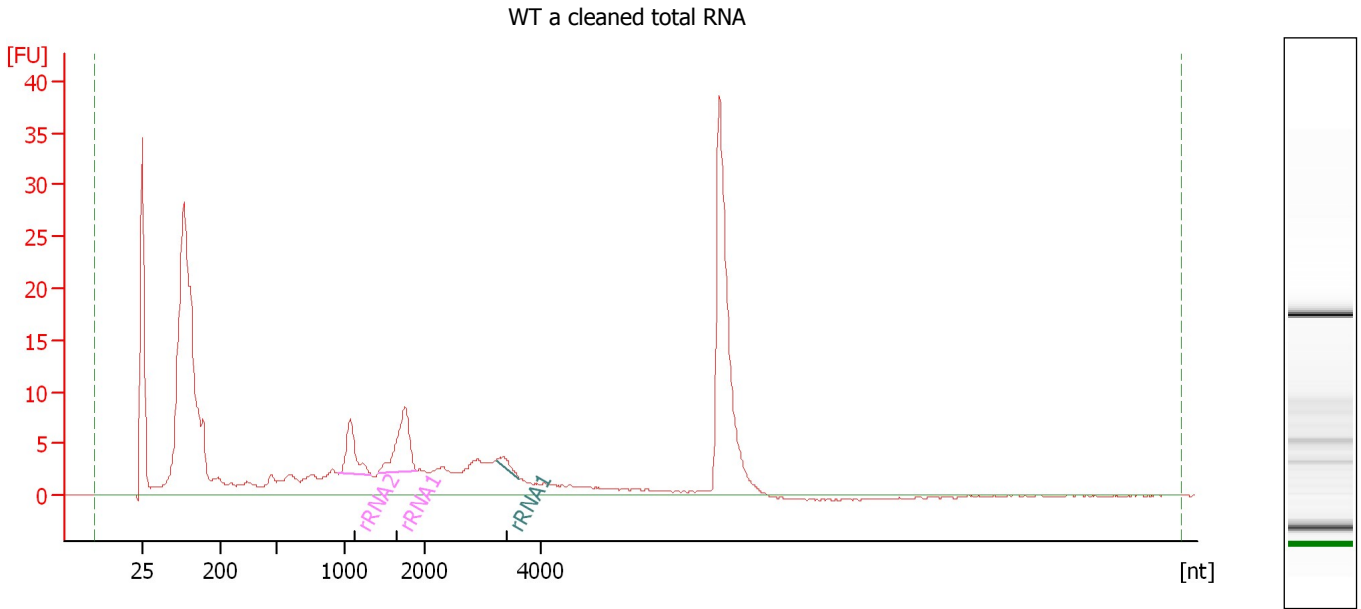
Overall Results for sample 4 : 4 Ribo depleted RNA

RNA Area:	90.6	rRNA Contamination:	0.0 %
RNA Concentration:	250 pg/μl		

Assay Class: mRNA Pico
Data Path: C:\...ents and Settings\Bioanalyzer\2015-09-17\2015-09-17_001.xad

Created: 9/17/2015 1:07:20 PM
Modified: 9/17/2015 1:25:24 PM

Electropherogram Summary Continued ...



Overall Results for sample 5 : WT a cleaned total RNA

RNA Area: 365.5 rRNA Contamination: 8.2 %
RNA Concentration: 1,007 pg/μl

Fragment table for sample 5 : WT a cleaned total RNA

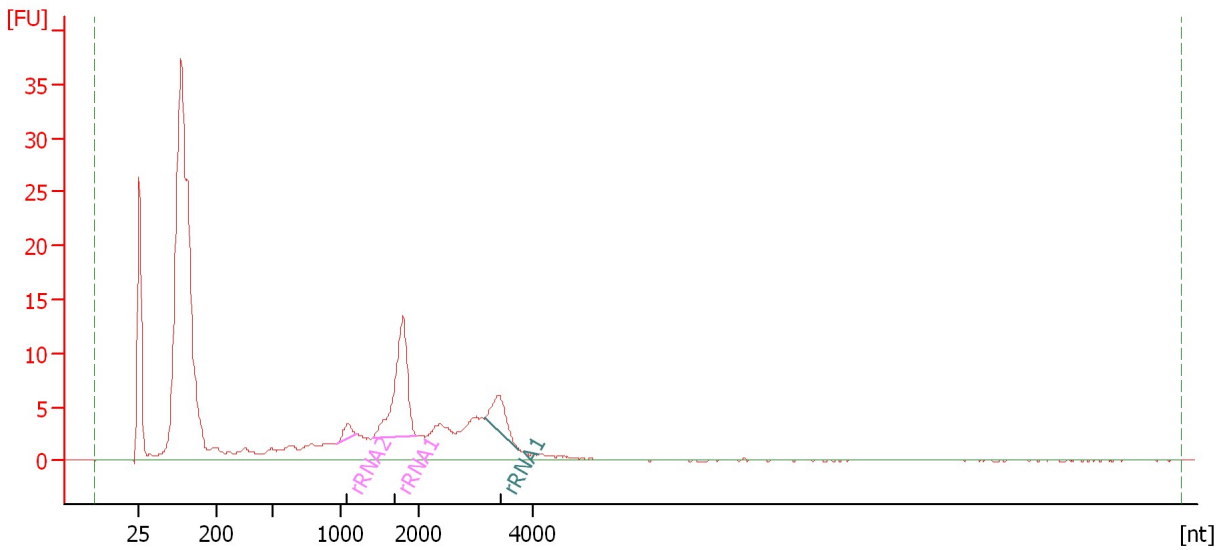
Name	Start Size [nt]	End Size [nt]	Area	% of total Area
rRNA2	957	1,324	11.1	3.0
rRNA1	1,404	1,891	17.1	4.7
rRNA1	3,217	3,632	1.8	0.5

Assay Class: mRNA Pico
Data Path: C:\...ents and Settings\Bioanalyzer\2015-09-17\2015-09-17_001.xad

Created: 9/17/2015 1:07:20 PM
Modified: 9/17/2015 1:25:24 PM

Electropherogram Summary Continued ...

WT b cleaned total RNA



Overall Results for sample 6 : WT b cleaned total RNA

RNA Area: 334.6 rRNA Contamination: 12.0 %
RNA Concentration: 922 pg/μl

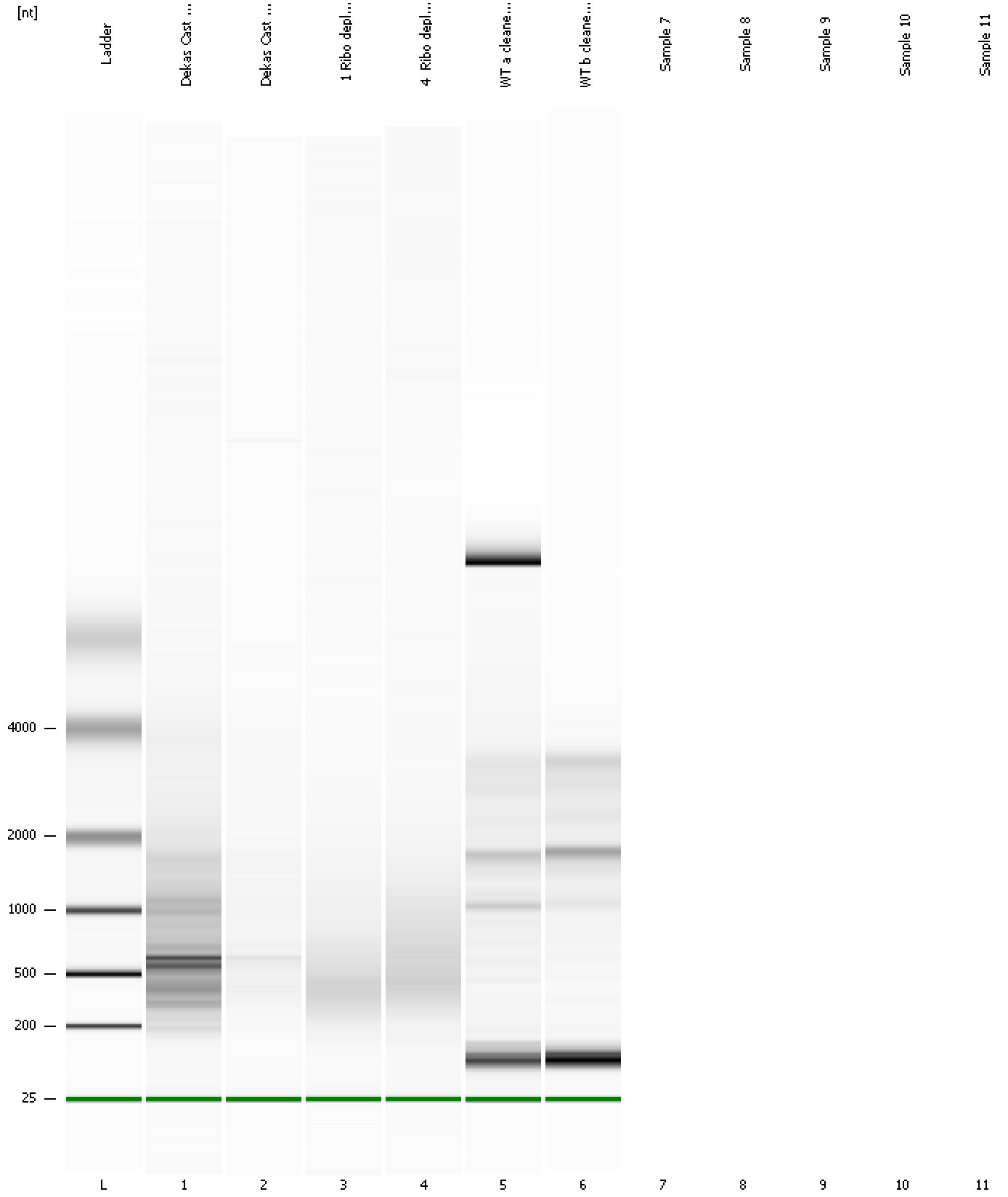
Fragment table for sample 6 : WT b cleaned total RNA

Name	Start Size [nt]	End Size [nt]	Area	% of total Area
rRNA2	978	1,214	2.6	0.8
rRNA1	1,405	1,978	30.0	9.0
rRNA1	3,157	3,743	7.6	2.3

Assay Class: mRNA Pico
Data Path: C:\...ents and Settings\Bioanalyzer\2015-09-17\2015-09-17_001.xad

Created: 9/17/2015 1:07:20 PM
Modified: 9/17/2015 1:25:24 PM

Gel Image

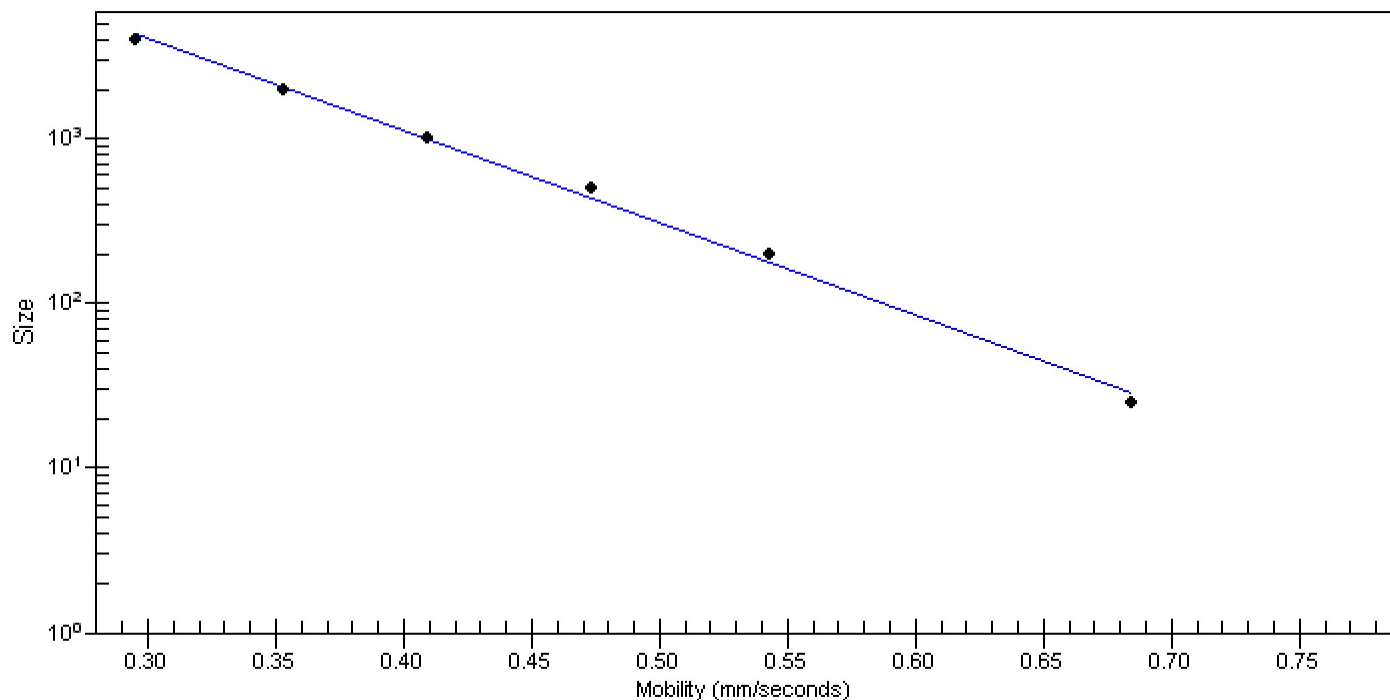


Assay Class: mRNA Pico
Data Path: C:\...ents and Settings\Bioanalyzer\2015-09-17\2015-09-17_001.xad

Created: 9/17/2015 1:07:20 PM
Modified: 9/17/2015 1:25:24 PM

Curves

Standard Curve



Assay Class: mRNA Pico
Data Path: C:\...ents and Settings\Bioanalyzer\2015-09-17\2015-09-17_001.xad

Created: 9/17/2015 1:07:20 PM
Modified: 9/17/2015 1:25:24 PM

Invalid Samples

Sample 7 has not been run, no results available.

Sample 8 has not been run, no results available.

Sample 9 has not been run, no results available.

Sample 10 has not been run, no results available.

Sample 11 has not been run, no results available.

Assay Class: mRNA Pico
 Data Path: C:\...ents and Settings\Bioanalyzer\2015-09-17\2015-09-17_001.xad

Created: 9/17/2015 1:07:20 PM
 Modified: 9/17/2015 1:25:24 PM

Run Logbook

Description	Number	Source	Category	Sub Category	Time	Time Zone	User	Host
Run ended on port 1 (Number of wells acquired: 7)		Instrument	Run		9/17/2015 1:25:21 PM	(GMT --07:00) Pacific Standard Time	UC Davis	D8XSMGH1
Run started on port 1 (File: C:\Documents and Settings\Bioanalyzer\2015-09-17\2015-09-17_001.xad)		Instrument	Run		9/17/2015 1:07:25 PM	(GMT --07:00) Pacific Standard Time	UC Davis	D8XSMGH1
Product Number : G2938B		Instrument	Run		9/17/2015 1:07:25 PM	(GMT --07:00) Pacific Standard Time	UC Davis	D8XSMGH1
Name :		Instrument	Run		9/17/2015 1:07:25 PM	(GMT --07:00) Pacific Standard Time	UC Davis	D8XSMGH1
Vendor : Agilent Technologies		Instrument	Run		9/17/2015 1:07:25 PM	(GMT --07:00) Pacific Standard Time	UC Davis	D8XSMGH1
Serial# : DE13701086		Instrument	Run		9/17/2015 1:07:25 PM	(GMT --07:00) Pacific Standard Time	UC Davis	D8XSMGH1
Firmware : C.01.069		Instrument	Run		9/17/2015 1:07:25 PM	(GMT --07:00) Pacific Standard Time	UC Davis	D8XSMGH1
Cartridge : Electrode		Instrument	Run		9/17/2015 1:07:25 PM	(GMT --07:00) Pacific Standard Time	UC Davis	D8XSMGH1