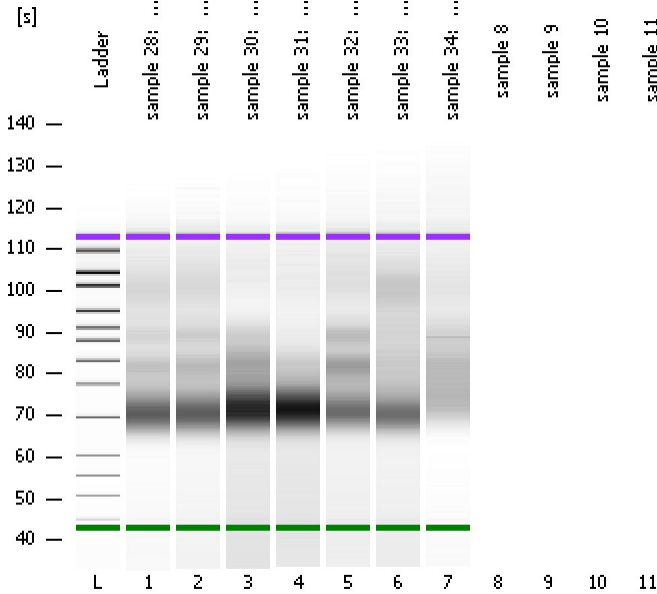


Assay Class: High Sensitivity DNA Assay
Data Path: C:\...ents and Settings\Bioanalyzer\2015-10-12\2015-10-12_001.xad

Created: 10/12/2015 7:41:17 AM
Modified: 10/12/2015 8:22:19 AM

Electrophoresis File Run Summary



Instrument Information:

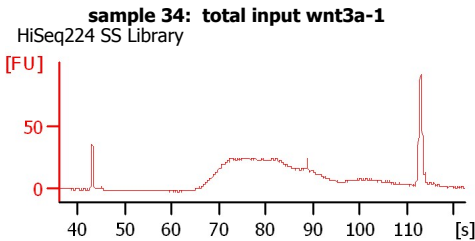
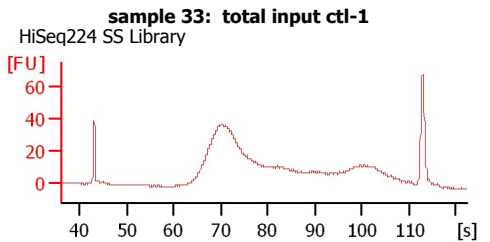
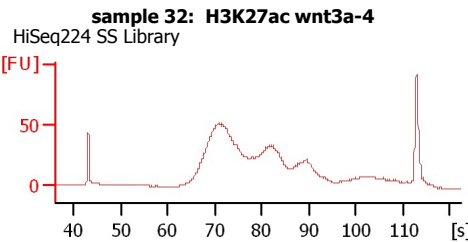
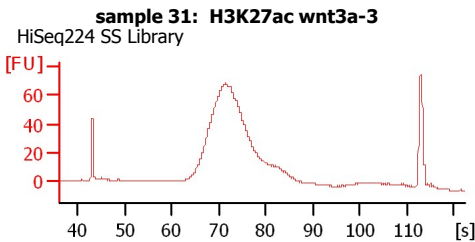
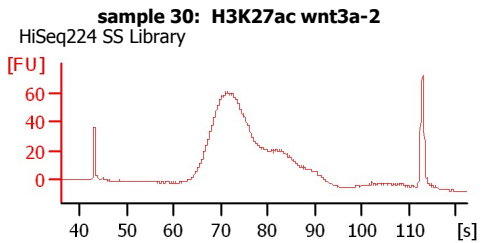
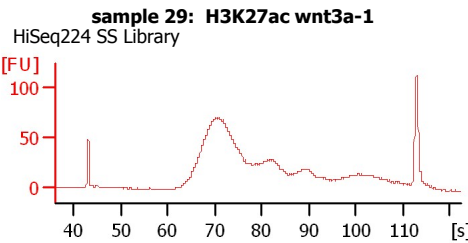
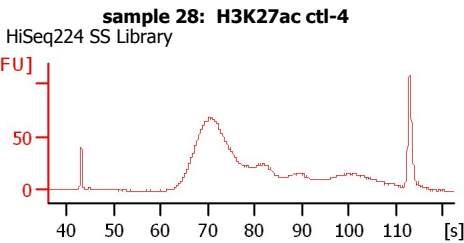
Instrument Name: DE13701086 Firmware: C.01.069
Serial#: DE13701086 Type: G2938B

Assay Information:

Assay Origin Path: C:\Program Files\Agilent\2100 bioanalyzer\2100 expert\assays\dsDNA\High Sensitivity DNA.xsy
Assay Class: High Sensitivity DNA Assay
Version: 1.03
Assay Comments: Copyright © 2003-2010 Agilent Technologies

Chip Information:

Chip Lot #:
Reagent Kit Lot #:
Chip Comments:



Assay Class: High Sensitivity DNA Assay
 Data Path: C:\...ents and Settings\Bioanalyzer\2015-10-12\2015-10-12_001.xad

Created: 10/12/2015 7:41:17 AM
 Modified: 10/12/2015 8:22:19 AM

Electrophoresis File Run Summary (Chip Summary)

Sample Name	Sample Comment	Rest. Digest	Status	Observation	Result Label	Result Color
sample 28: H3K27ac ctl-4	HiSeq224 SS Library	<input type="checkbox"/>	✓			
sample 29: H3K27ac wnt3a-1	HiSeq224 SS Library	<input type="checkbox"/>	✓			
sample 30: H3K27ac wnt3a-2	HiSeq224 SS Library	<input type="checkbox"/>	✓			
sample 31: H3K27ac wnt3a-3	HiSeq224 SS Library	<input type="checkbox"/>	✓			
sample 32: H3K27ac wnt3a-4	HiSeq224 SS Library	<input type="checkbox"/>	✓			
sample 33: total input ctl-1	HiSeq224 SS Library	<input type="checkbox"/>	✓			
sample 34: total input wnt3a-1	HiSeq224 SS Library	<input type="checkbox"/>	✓			
sample 8		<input type="checkbox"/>				
sample 9		<input type="checkbox"/>				
sample 10		<input type="checkbox"/>				
sample 11		<input type="checkbox"/>				
Ladder		<input type="checkbox"/>	✓			

Chip Lot #

Reagent Kit Lot #

Chip Comments :

Assay Class: High Sensitivity DNA Assay
Data Path: C:\...ents and Settings\Bioanalyzer\2015-10-12\2015-10-12_001.xad

Created: 10/12/2015 7:41:17 AM
Modified: 10/12/2015 8:22:19 AM

Electrophoresis Assay Details

General Analysis Settings

Number of Available Sample and Ladder Wells (Max.) : 12
Minimum Visible Range [s] : 32
Maximum Visible Range [s] : 138
Start Analysis Time Range [s] : 33
End Analysis Time Range [s] : 137.5
Ladder Concentration [pg/μl] : 1950
Uses Standard Area for Ladder Fragments
Lower Marker Concentration [pg/μl] : 125
Upper Marker Concentration [pg/μl] : 75
Used Upper Marker for Quantitation
Standard Curve Fit is Point to Point
Show Data Aligned to Lower and Upper Marker

Integrator Settings

Integration Start Time [s] : 33.05
Integration End Time [s] : 137
Slope Threshold : 0.8
Height Threshold [FU] : 5
Area Threshold : 0.1
Width Threshold [s] : 0.6
Baseline Plateau [s] : 0.5

Filter Settings

Filter Width [s] : 0.5
Polynomial Order : 4

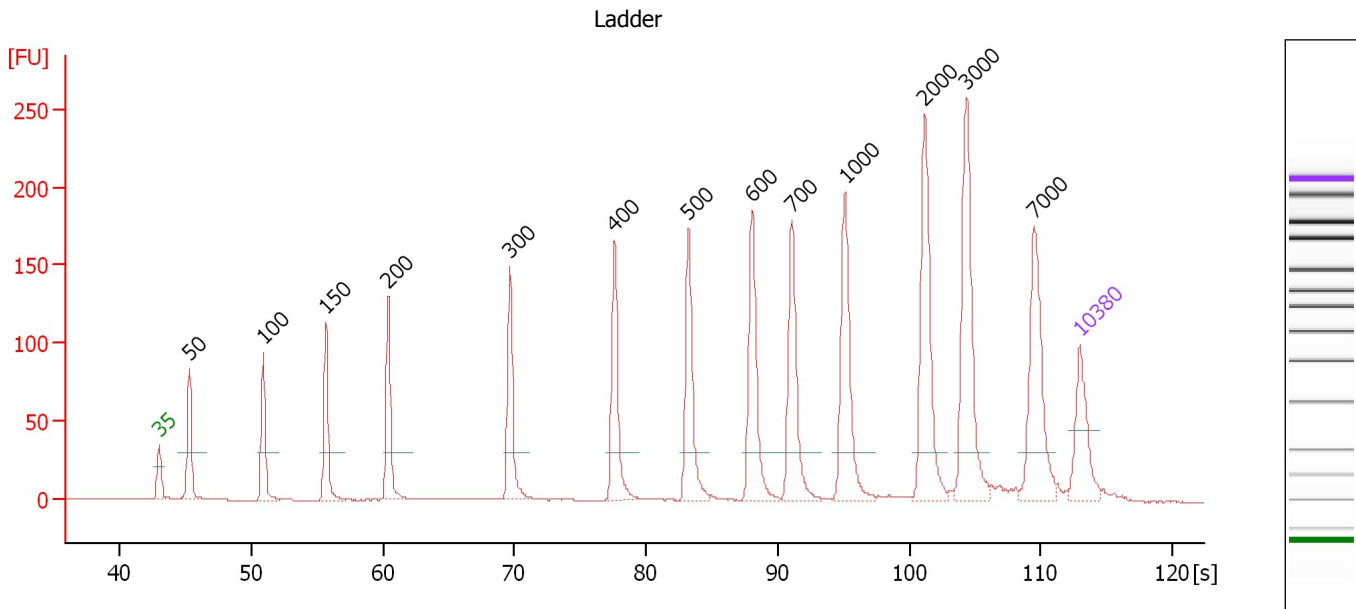
Ladder

Ladder Peak	Size	Area
1	35	160
2	50	210
3	100	208
4	150	221
5	200	242
6	300	270
7	400	305
8	500	306
9	600	336
10	700	321
11	1000	366
12	2000	413
13	3000	411
14	7000	400
15	10380	214

Assay Class: High Sensitivity DNA Assay
 Data Path: C:\...ents and Settings\Bioanalyzer\2015-10-12\2015-10-12_001.xad

Created: 10/12/2015 7:41:17 AM
 Modified: 10/12/2015 8:22:19 AM

Electropherogram Summary



Overall Results for Ladder

Noise: 0.1

Peak table for Ladder

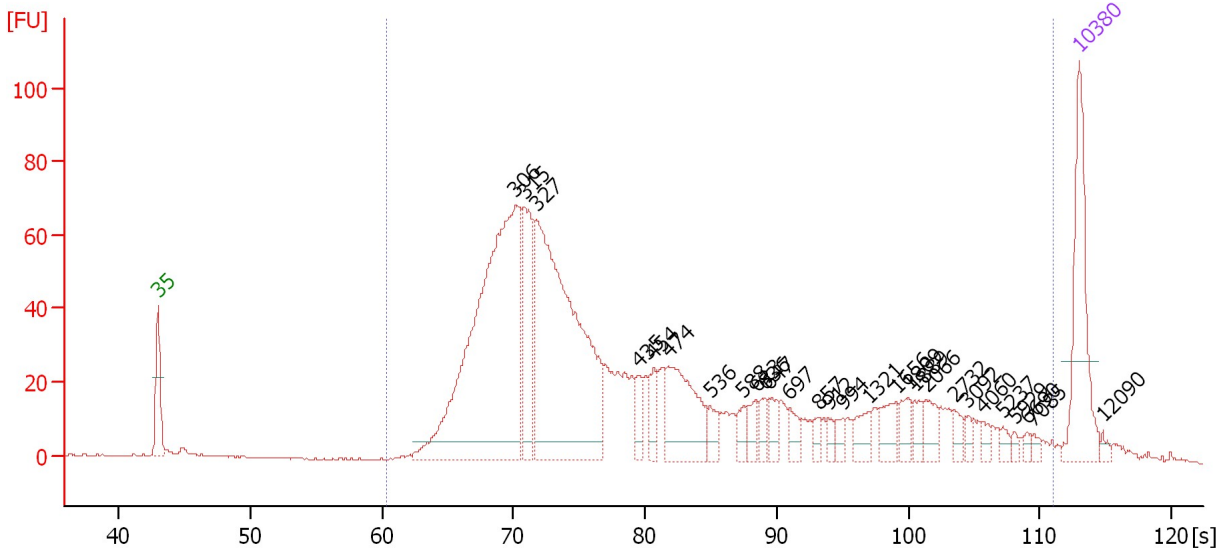
Peak	Size [bp]	Conc. [pg/μl]	Molarity [pmol/l]	Observations	Aligned Migration Time [s]
1	35	125.00	5,411.3	Lower Marker	43.00
2	50	150.00	4,545.5	Ladder Peak	45.30
3	100	150.00	2,272.7	Ladder Peak	50.91
4	150	150.00	1,515.2	Ladder Peak	55.70
5	200	150.00	1,136.4	Ladder Peak	60.39
6	300	150.00	757.6	Ladder Peak	69.65
7	400	150.00	568.2	Ladder Peak	77.61
8	500	150.00	454.5	Ladder Peak	83.22
9	600	150.00	378.8	Ladder Peak	88.04
10	700	150.00	324.7	Ladder Peak	91.09
11	1,000	150.00	227.3	Ladder Peak	95.13
12	2,000	150.00	113.6	Ladder Peak	101.17
13	3,000	150.00	75.8	Ladder Peak	104.35
14	7,000	150.00	32.5	Ladder Peak	109.43
15	10,380	75.00	10.9	Upper Marker	113.00

Assay Class: High Sensitivity DNA Assay
 Data Path: C:\...ents and Settings\Bioanalyzer\2015-10-12\2015-10-12_001.xad

Created: 10/12/2015 7:41:17 AM
 Modified: 10/12/2015 8:22:19 AM

Electropherogram Summary Continued ...

sample 28: H3K27ac ctl-4 [HiSeq224 SS Library]



Overall Results for sample 1 : sample 28: H3K27ac ctl-4

Number of peaks found: 28 Corr. Area 1: 1,485.6
 Noise: 0.2

Peak table for sample 1 : sample 28: H3K27ac ctl-4

Peak	Size [bp]	Conc. [pg/μl]	Molarity [pmol/l]	Observations	Aligned Migration Time [s]
1	35	125.00	5,411.3	Lower Marker	43.00
2	306	477.54	2,362.9		70.15
3	315	101.40	488.5		70.81
4	327	387.55	1,797.5		71.77
5	435	17.79	62.0		79.56
6	454	18.63	62.1		80.66
7	474	89.95	287.5		81.76
8	536	15.00	42.4		84.97
9	588	12.44	32.0		87.48
10	613	14.41	35.6		88.45
11	636	12.24	29.1		89.15
12	647	13.14	30.8		89.46
13	697	13.76	29.9		91.00
14	857	7.28	12.9		93.20
15	912	6.41	10.6		93.95
16	994	7.53	11.5		95.05
17	1,321	14.51	16.6		97.07
18	1,656	18.38	16.8		99.10
19	1,809	13.56	11.4		100.02
20	1,889	8.57	6.9		100.50
21	2,066	14.12	10.4		101.38
22	2,732	8.68	4.8		103.50
23	3,092	5.54	2.7		104.46
24	4,060	5.40	2.0		105.70
25	5,237	5.23	1.5		107.19

Assay Class: High Sensitivity DNA Assay
 Data Path: C:\...ents and Settings\Bioanalyzer\2015-10-12\2015-10-12_001.xad

Created: 10/12/2015 7:41:17 AM
 Modified: 10/12/2015 8:22:19 AM

Electropherogram Summary Continued ...

... Peak table for sample 1 : sample 28: H3K27ac ctl-4

Peak	Size [bp]	Conc. [pg/μl]	Molarity [pmol/l]	Observations	Aligned Migration Time [s]
26	5,929	3.79	1.0		108.07
27	6,690	3.41	0.8		109.04
28	7,085	3.90	0.8		109.52
29	10,380	75.00	10.9	Upper Marker	113.00
30	12,090	0.00	0.0		114.80

Region table for sample 1 : sample 28: H3K27ac ctl-4

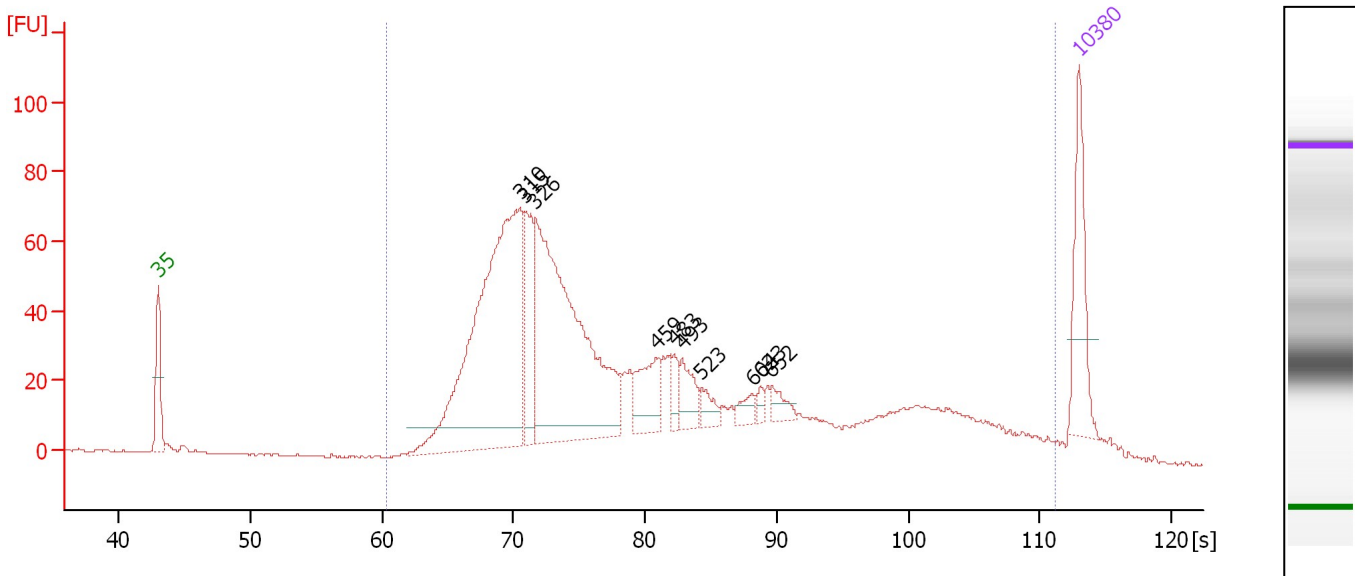
From [s]	To [s]	Average Size [bp]	Corr. Area	Molarity [pmol/l]	Co Conc. lor [pg/μl]	% of Total	Size distribution in CV [%]
60.39	110.98	849	1,485.6	6,048.6	1,533.14	97	100.0

Assay Class: High Sensitivity DNA Assay
 Data Path: C:\...ents and Settings\Bioanalyzer\2015-10-12\2015-10-12_001.xad

Created: 10/12/2015 7:41:17 AM
 Modified: 10/12/2015 8:22:19 AM

Electropherogram Summary Continued ...

sample 29: H3K27ac wnt3a-1 [HiSeq224 SS Library]



Overall Results for sample 2 : sample 29: H3K27ac wnt3a-1

Number of peaks found: 10 Corr. Area 1: 1,559.4
 Noise: 0.3

Peak table for sample 2 : sample 29: H3K27ac wnt3a-1

Peak	Size [bp]	Conc. [pg/μl]	Molarity [pmol/l]	Observations	Aligned Migration Time [s]
1	35	125.00	5,411.3	Lower Marker	43.00
2	310	563.44	2,750.2		70.48
3	315	101.26	487.2		70.84
4	326	483.54	2,250.1		71.69
5	459	64.14	211.8		80.91
6	483	18.93	59.4		82.25
7	493	37.76	116.0		82.83
8	523	19.93	57.8		84.31
9	604	14.89	37.4		88.16
10	623	7.24	17.6		88.74
11	652	15.81	36.7		89.64
12	10,380	75.00	10.9	Upper Marker	113.00

Region table for sample 2 : sample 29: H3K27ac wnt3a-1

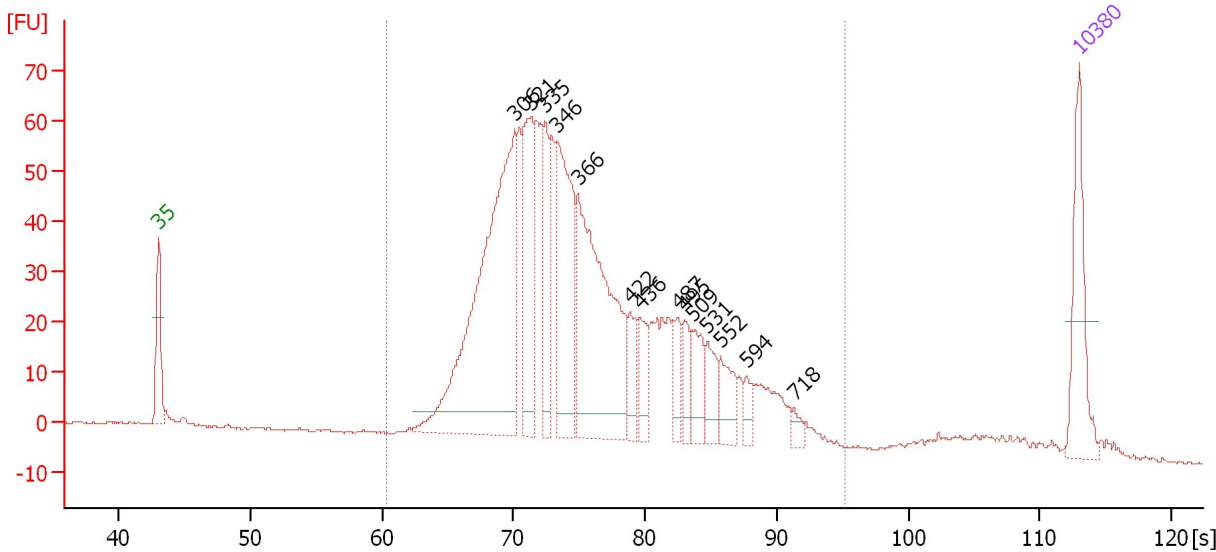
From [s]	To [s]	Average Size [bp]	Corr. Area	Molarity [pmol/l]	Co Conc. lor [pg/μl]	% of Total	Size distribution in CV [%]
60.39	111.25	872	1,559.4	7,513.9	1,919.39	98	100.0

Assay Class: High Sensitivity DNA Assay
 Data Path: C:\...ents and Settings\Bioanalyzer\2015-10-12\2015-10-12_001.xad

Created: 10/12/2015 7:41:17 AM
 Modified: 10/12/2015 8:22:19 AM

Electropherogram Summary Continued ...

sample 30: H3K27ac wnt3a-2 [HiSeq224 SS Library]



Overall Results for sample 3 : sample 30: H3K27ac wnt3a-2

Number of peaks found: 14 Corr. Area 1: 1,205.7
 Noise: 0.2

Peak table for sample 3 : sample 30: H3K27ac wnt3a-2

Peak	Size [bp]	Conc. [pg/μl]	Molarity [pmol/l]	Observations	Aligned Migration Time [s]
1	35	125.00	5,411.3	Lower Marker	43.00
2	306	517.47	2,562.6		70.13
3	321	146.70	692.8		71.31
4	335	90.44	409.6		72.40
5	346	195.53	856.2		73.31
6	366	310.17	1,283.9		74.91
7	422	37.82	135.7		78.86
8	436	38.58	134.0		79.64
9	487	33.10	102.9		82.51
10	495	31.89	97.5		82.96
11	509	41.89	124.7		83.64
12	531	35.15	100.2		84.74
13	552	39.22	107.6		85.74
14	594	15.95	40.7		87.74
15	718	10.62	22.4		91.34
16	10,380	75.00	10.9	Upper Marker	113.00

Region table for sample 3 : sample 30: H3K27ac wnt3a-2

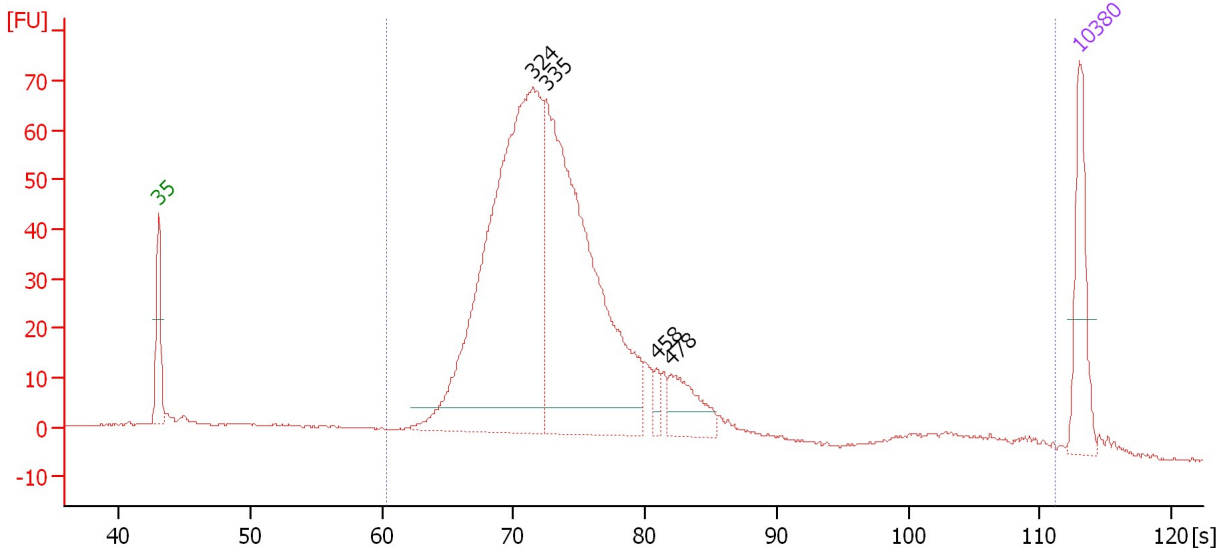
From [s]	To [s]	Average Size [bp]	Corr. Area	Molarity [pmol/l]	Co Conc. lor [pg/μl]	% of Total	Size distribution in CV [%]
60.39	95.13	389	1,205.7	8,554.0	1,999.45	94	29.1

Assay Class: High Sensitivity DNA Assay
 Data Path: C:\...ents and Settings\Bioanalyzer\2015-10-12\2015-10-12_001.xad

Created: 10/12/2015 7:41:17 AM
 Modified: 10/12/2015 8:22:19 AM

Electropherogram Summary Continued ...

sample 31: H3K27ac wnt3a-3 [HiSeq224 SS Library]



Overall Results for sample 4 : sample 31: H3K27ac wnt3a-3

Number of peaks found: 4 Corr. Area 1: 1,130.0
 Noise: 0.1

Peak table for sample 4 : sample 31: H3K27ac wnt3a-3

Peak	Size [bp]	Conc. [pg/μl]	Molarity [pmol/l]	Observations	Aligned Migration Time [s]
1	35	125.00	5,411.3	Lower Marker	43.00
2	324	827.76	3,874.6		71.54
3	335	668.95	3,022.5		72.46
4	458	15.65	51.8		80.85
5	478	66.24	209.8		82.01
6	10,380	75.00	10.9	Upper Marker	113.00

Region table for sample 4 : sample 31: H3K27ac wnt3a-3

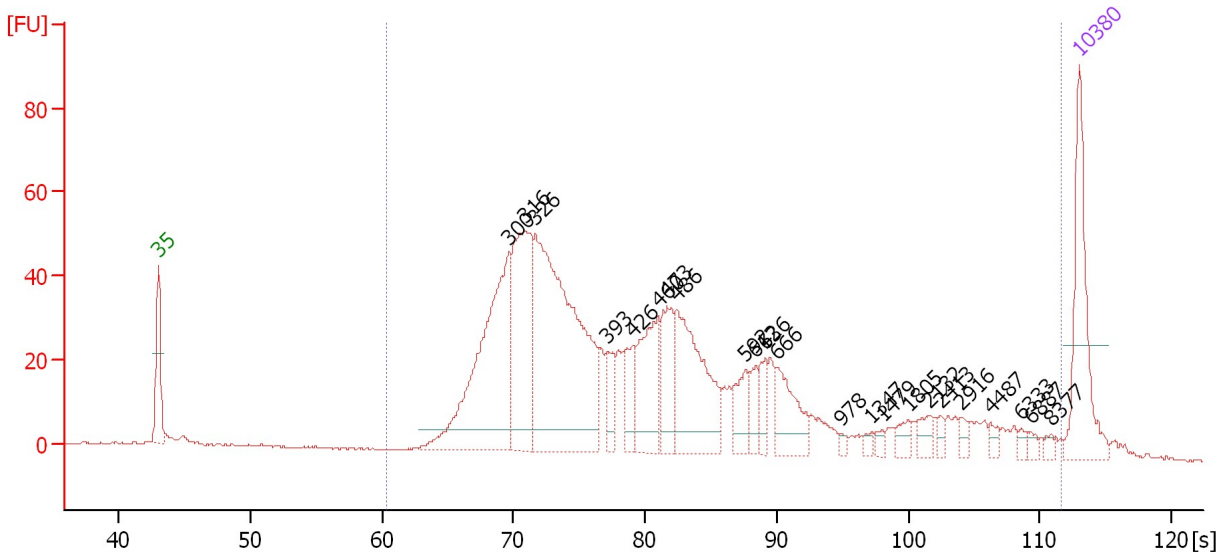
From [s]	To [s]	Average Size [bp]	Corr. Area	Molarity [pmol/l]	Co Conc. lor [pg/μl]	% of Total	Size distribution in CV [%]
60.39	111.18	569	1,130.0	8,088.5	1,843.56	92	100.0

Assay Class: High Sensitivity DNA Assay
 Data Path: C:\...ents and Settings\Bioanalyzer\2015-10-12\2015-10-12_001.xad

Created: 10/12/2015 7:41:17 AM
 Modified: 10/12/2015 8:22:19 AM

Electropherogram Summary Continued ...

sample 32: H3K27ac wnt3a-4 [HiSeq224 SS Library]



Overall Results for sample 5 : sample 32: H3K27ac wnt3a-4

Number of peaks found: 23 Corr. Area 1: 1,227.4
 Noise: 0.2

Peak table for sample 5 : sample 32: H3K27ac wnt3a-4

Peak	Size [bp]	Conc. [pg/μl]	Molarity [pmol/l]	Observations	Aligned Migration Time [s]
1	35	125.00	5,411.3	Lower Marker	43.00
2	300	249.68	1,260.3		69.67
3	316	169.68	814.8		70.89
4	326	359.31	1,672.3		71.69
5	393	27.35	105.3		77.08
6	426	35.12	125.0		79.06
7	460	81.77	269.3		80.98
8	473	55.88	179.1		81.69
9	486	131.71	410.6		82.44
10	592	29.78	76.2		87.65
11	612	17.20	42.6		88.40
12	636	19.97	47.5		89.15
13	666	49.19	112.0		90.04
14	978	3.44	5.3		94.83
15	1,347	4.31	4.8		97.23
16	1,479	4.55	4.7		98.02
17	1,805	9.56	8.0		100.00
18	2,132	11.56	8.2		101.59
19	2,413	5.26	3.3		102.48
20	2,916	5.32	2.8		104.08
21	4,487	5.71	1.9		106.24
22	6,333	3.89	0.9		108.59
23	6,887	4.32	1.0		109.29
24	8,377	4.01	0.7		110.89
25	10,380	75.00	10.9	Upper Marker	113.00

Assay Class: High Sensitivity DNA Assay
Data Path: C:\...ents and Settings\Bioanalyzer\2015-10-12\2015-10-12_001.xad

Created: 10/12/2015 7:41:17 AM
Modified: 10/12/2015 8:22:19 AM

Electropherogram Summary Continued ...

... Region table for sample 5 : sample 32: H3K27ac wnt3a-4

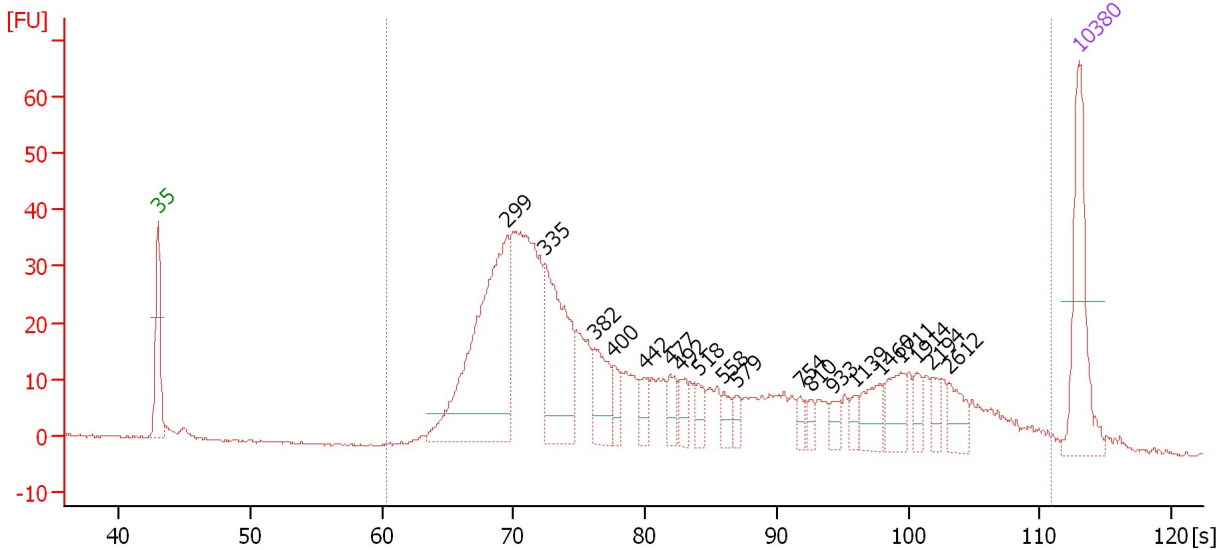
From [s]	To [s]	Average Size [bp]	Corr. Area	Molarity [pmol/l]	Co Conc. lor [pg/μl]	% of Total	Size distribution in CV [%]
60.39	111.67	869	1,227.4	5,557.7	■ 1,482.88	96	100.0

Assay Class: High Sensitivity DNA Assay
 Data Path: C:\...ents and Settings\Bioanalyzer\2015-10-12\2015-10-12_001.xad

Created: 10/12/2015 7:41:17 AM
 Modified: 10/12/2015 8:22:19 AM

Electropherogram Summary Continued ...

sample 33: total input ctl-1 [HiSeq224 SS Library]



Overall Results for sample 6 : sample 33: total input ctl-1

Number of peaks found: 19 Corr. Area 1: 858.2
 Noise: 0.2

Peak table for sample 6 : sample 33: total input ctl-1

Peak	Size [bp]	Conc. [pg/μl]	Molarity [pmol/l]	Observations	Aligned Migration Time [s]
1	35	125.00	5,411.3	Lower Marker	43.00
2	299	281.75	1,429.1		69.53
3	335	146.36	662.4		72.42
4	382	48.79	193.3		76.20
5	400	16.95	64.2		77.62
6	442	17.81	61.0		79.99
7	477	19.86	63.1		81.93
8	492	17.95	55.3		82.78
9	518	15.95	46.6		84.10
10	558	12.78	34.7		85.99
11	579	10.06	26.3		87.03
12	754	9.36	18.8		91.81
13	810	8.13	15.2		92.57
14	933	10.45	17.0		94.22
15	1,139	9.04	12.0		95.97
16	1,460	24.89	25.8		97.91
17	1,711	26.38	23.4		99.43
18	1,914	12.05	9.5		100.66
19	2,194	10.60	7.3		101.79
20	2,612	19.73	11.4		103.11
21	10,380	75.00	10.9	Upper Marker	113.00

Region table for sample 6 : sample 33: total input ctl-1

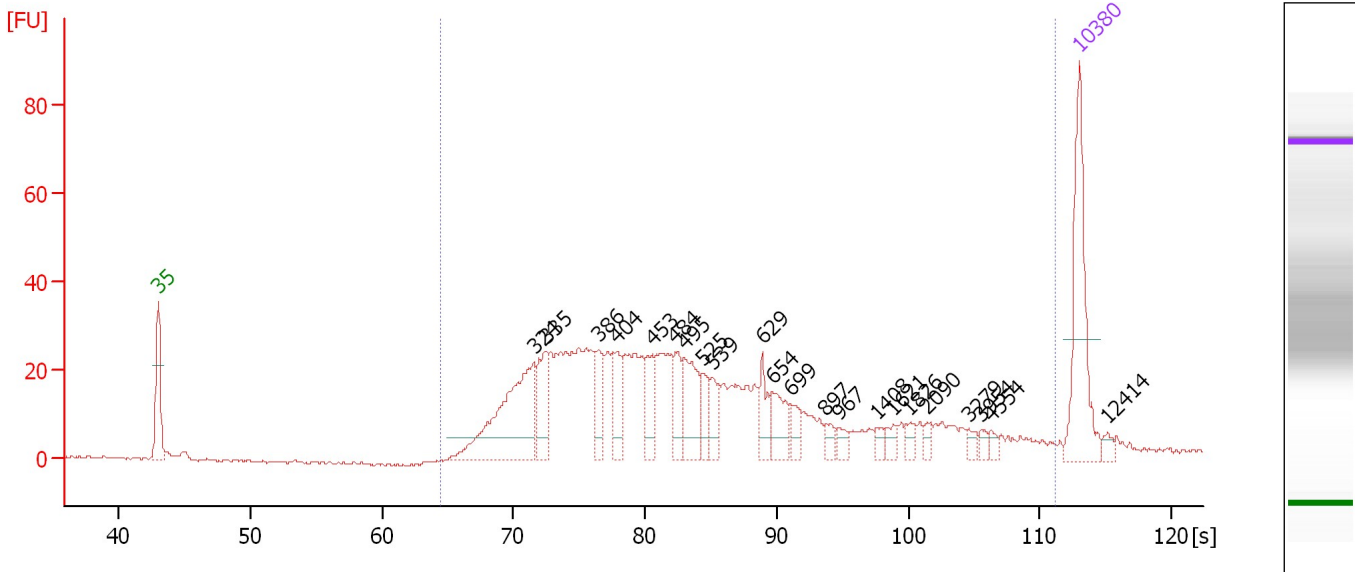
From [s]	To [s]	Average Size [bp]	Corr. Area	Molarity [pmol/l]	Co Conc. [pg/μl]	% of Total	Size distribution in CV [%]
60.39	110.95	985	858.2	4,830.5	1,298.20	97	100.0

Assay Class: High Sensitivity DNA Assay
 Data Path: C:\...ents and Settings\Bioanalyzer\2015-10-12\2015-10-12_001.xad

Created: 10/12/2015 7:41:17 AM
 Modified: 10/12/2015 8:22:19 AM

Electropherogram Summary Continued ...

sample 34: total input wnt3a-1 [HiSeq224 SS Library]



Overall Results for sample 7 : sample 34: total input wnt3a-1

Number of peaks found: 22 Corr. Area 1: 762.3
 Noise: 0.3

Peak table for sample 7 : sample 34: total input wnt3a-1

Peak	Size [bp]	Conc. [pg/μl]	Molarity [pmol/l]	Observations	Aligned Migration Time [s]
1	35	125.00	5,411.3	Lower Marker	43.00
2	324	141.78	663.0		71.56
3	335	43.86	198.1		72.47
4	386	30.30	119.0		76.47
5	404	33.00	123.9		77.81
6	453	28.89	96.7		80.57
7	484	28.58	89.4		82.34
8	495	47.93	146.6		82.96
9	525	19.05	54.9		84.44
10	539	18.79	52.8		85.10
11	629	22.22	53.6		88.92
12	654	28.18	65.3		89.68
13	699	15.78	34.2		91.07
14	897	8.26	14.0		93.74
15	967	7.82	12.2		94.69
16	1,408	6.61	7.1		97.60
17	1,621	7.02	6.6		98.89
18	1,826	6.54	5.4		100.13
19	2,090	5.26	3.8		101.46
20	3,279	5.65	2.6		104.70
21	3,954	4.85	1.9		105.56
22	4,554	4.55	1.5		106.32
23	10,380	75.00	10.9	Upper Marker	113.00
24	12,414	0.00	0.0		115.15

Assay Class: High Sensitivity DNA Assay
Data Path: C:\...ents and Settings\Bioanalyzer\2015-10-12\2015-10-12_001.xad

Created: 10/12/2015 7:41:17 AM
Modified: 10/12/2015 8:22:19 AM

Electropherogram Summary Continued ...

... Region table for sample 7 :

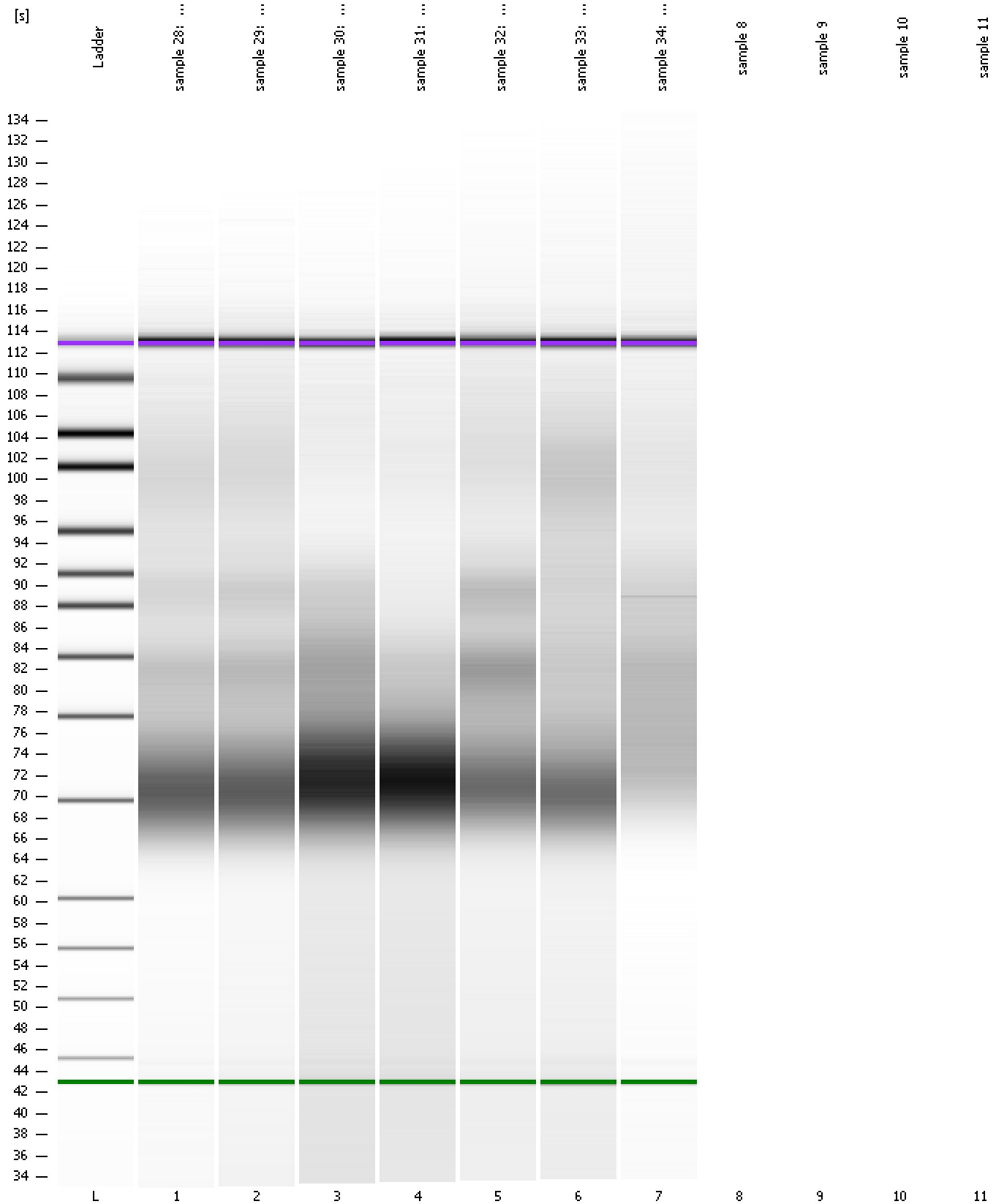
sample 34: total input wnt3a-1

From [s]	To [s]	Average Size [bp]	Corr. Area	Molarity [pmol/l]	Co Conc. lor [pg/μl]	% of Total	Size distribution in CV [%]
64.50	111.12	898	762.3	3,280.1	■ 987.45	96	100.0

Assay Class: High Sensitivity DNA Assay
Data Path: C:\...ents and Settings\Bioanalyzer\2015-10-12\2015-10-12_001.xad

Created: 10/12/2015 7:41:17 AM
Modified: 10/12/2015 8:22:19 AM

Gel Image

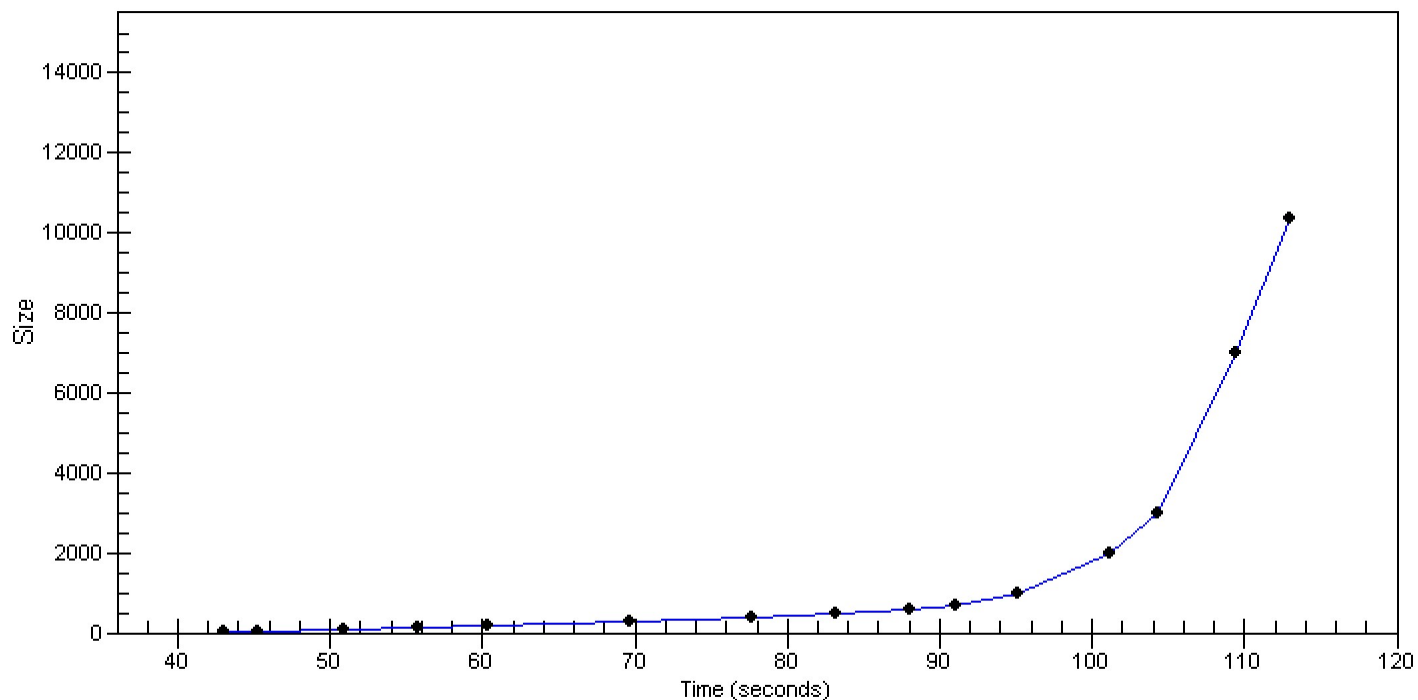


Assay Class: High Sensitivity DNA Assay
Data Path: C:\...ents and Settings\Bioanalyzer\2015-10-12\2015-10-12_001.xad

Created: 10/12/2015 7:41:17 AM
Modified: 10/12/2015 8:22:19 AM

Curves

Standard Curve



Assay Class: High Sensitivity DNA Assay
Data Path: C:\...ents and Settings\Bioanalyzer\2015-10-12\2015-10-12_001.xad

Created: 10/12/2015 7:41:17 AM
Modified: 10/12/2015 8:22:19 AM

Invalid Samples

Sample 8 has not been run, no results available.

Sample 9 has not been run, no results available.

Sample 10 has not been run, no results available.

Sample 11 has not been run, no results available.

Assay Class: High Sensitivity DNA Assay
 Data Path: C:\...ents and Settings\Bioanalyzer\2015-10-12\2015-10-12_001.xad

Created: 10/12/2015 7:41:17 AM
 Modified: 10/12/2015 8:22:19 AM

Run Logbook

Description	Number	Source	Category	Sub Category	Time	Time Zone	User	Host
Run ended on port 1 (Number of wells acquired: 8)		Instrument	Run		10/12/2015 8:11:09 AM	(GMT --07:00) Pacific Standard Time	UC Davis	D8XSMGH1
Run started on port 1 (File: C:\Documents and Settings\Bioanalyzer\2015-10-12\2015-10-12_001.xad)		Instrument	Run		10/12/2015 7:41:23 AM	(GMT --07:00) Pacific Standard Time	UC Davis	D8XSMGH1
Product Number : G2938B		Instrument	Run		10/12/2015 7:41:23 AM	(GMT --07:00) Pacific Standard Time	UC Davis	D8XSMGH1
Name :		Instrument	Run		10/12/2015 7:41:23 AM	(GMT --07:00) Pacific Standard Time	UC Davis	D8XSMGH1
Vendor : Agilent Technologies		Instrument	Run		10/12/2015 7:41:23 AM	(GMT --07:00) Pacific Standard Time	UC Davis	D8XSMGH1
Serial# : DE13701086		Instrument	Run		10/12/2015 7:41:23 AM	(GMT --07:00) Pacific Standard Time	UC Davis	D8XSMGH1
Firmware : C.01.069		Instrument	Run		10/12/2015 7:41:23 AM	(GMT --07:00) Pacific Standard Time	UC Davis	D8XSMGH1
Cartridge : Electrode		Instrument	Run		10/12/2015 7:41:23 AM	(GMT --07:00) Pacific Standard Time	UC Davis	D8XSMGH1