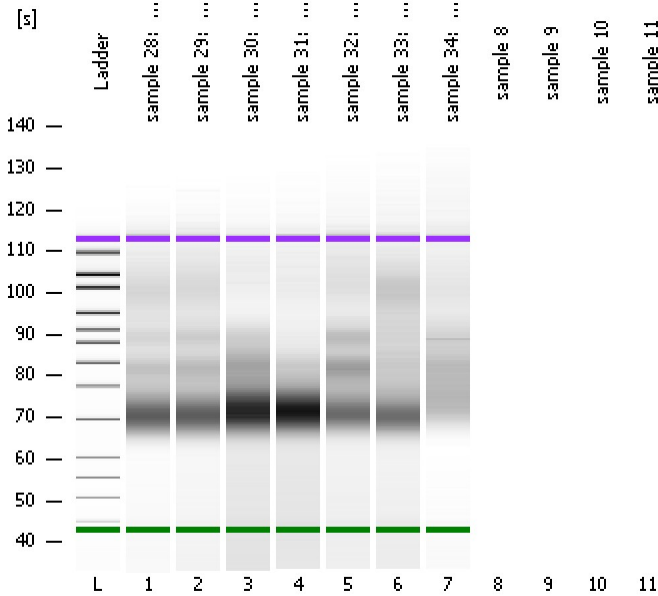


Assay Class: High Sensitivity DNA Assay
 Data Path: C:\...ents and Settings\Bioanalyzer\2015-10-12\2015-10-12_001.xad

Created: 10/12/2015 7:41:17 AM
 Modified: 10/12/2015 8:22:19 AM

Electrophoresis File Run Summary



Instrument Information:

Instrument Name: DE13701086 Firmware: C.01.069
 Serial#: DE13701086 Type: G2938B

Assay Information:

Assay Origin Path: C:\Program Files\Agilent\2100 bioanalyzer\2100 expert\assays\dsDNA\High Sensitivity DNA.xsy
 Assay Class: High Sensitivity DNA Assay
 Version: 1.03
 Assay Comments: Copyright © 2003-2010 Agilent Technologies

Chip Information:

Chip Lot #:
 Reagent Kit Lot #:
 Chip Comments:

sample 28: H3K27ac ctl-4
 HiSeq224 SS Library

sample 29: H3K27ac wnt3a-1
 HiSeq224 SS Library

sample 30: H3K27ac wnt3a-2
 HiSeq224 SS Library

sample 31: H3K27ac wnt3a-3
 HiSeq224 SS Library

sample 32: H3K27ac wnt3a-4
 HiSeq224 SS Library

sample 33: total input ctl-1
 HiSeq224 SS Library

sample 34: total input wnt3a-1
 HiSeq224 SS Library

Assay Class: High Sensitivity DNA Assay
 Data Path: C:\...ents and Settings\Bioanalyzer\2015-10-12\2015-10-12_001.xad

Created: 10/12/2015 7:41:17 AM
 Modified: 10/12/2015 8:22:19 AM

Electrophoresis File Run Summary (Chip Summary)

Sample Name	Sample Comment	Rest. Digest	Status	Observation	Result Label	Result Color
sample 28: H3K27ac ctl-4	HiSeq224 SS Library	<input type="checkbox"/>	✓			
sample 29: H3K27ac wnt3a-1	HiSeq224 SS Library	<input type="checkbox"/>	✓			
sample 30: H3K27ac wnt3a-2	HiSeq224 SS Library	<input type="checkbox"/>	✓			
sample 31: H3K27ac wnt3a-3	HiSeq224 SS Library	<input type="checkbox"/>	✓			
sample 32: H3K27ac wnt3a-4	HiSeq224 SS Library	<input type="checkbox"/>	✓			
sample 33: total input ctl-1	HiSeq224 SS Library	<input type="checkbox"/>	✓			
sample 34: total input wnt3a-1	HiSeq224 SS Library	<input type="checkbox"/>	✓			
sample 8		<input type="checkbox"/>				
sample 9		<input type="checkbox"/>				
sample 10		<input type="checkbox"/>				
sample 11		<input type="checkbox"/>				
Ladder		<input type="checkbox"/>	✓			

Chip Lot #

Reagent Kit Lot #

Chip Comments :

Assay Class: High Sensitivity DNA Assay
Data Path: C:\...ents and Settings\Bioanalyzer\2015-10-12\2015-10-12_001.xad

Created: 10/12/2015 7:41:17 AM
Modified: 10/12/2015 8:22:19 AM

Electrophoresis Assay Details

General Analysis Settings

Number of Available Sample and Ladder Wells (Max.) : 12
Minimum Visible Range [s] : 32
Maximum Visible Range [s] : 138
Start Analysis Time Range [s] : 33
End Analysis Time Range [s] : 137.5
Ladder Concentration [pg/μl] : 1950
Uses Standard Area for Ladder Fragments
Lower Marker Concentration [pg/μl] : 125
Upper Marker Concentration [pg/μl] : 75
Used Upper Marker for Quantitation
Standard Curve Fit is Point to Point
Show Data Aligned to Lower and Upper Marker

Integrator Settings

Integration Start Time [s] : 33.05
Integration End Time [s] : 137
Slope Threshold : 0.8
Height Threshold [FU] : 5
Area Threshold : 0.1
Width Threshold [s] : 0.6
Baseline Plateau [s] : 0.5

Filter Settings

Filter Width [s] : 0.5
Polynomial Order : 4

Ladder

Ladder Peak	Size	Area
1	35	160
2	50	210
3	100	208
4	150	221
5	200	242
6	300	270
7	400	305
8	500	306
9	600	336
10	700	321
11	1000	366
12	2000	413
13	3000	411
14	7000	400
15	10380	214

Assay Class: High Sensitivity DNA Assay
Data Path: C:\...ents and Settings\Bioanalyzer\2015-10-12\2015-10-12_001.xad

Created: 10/12/2015 7:41:17 AM
Modified: 10/12/2015 8:22:19 AM

Electropherogram Summary

Ladder



Assay Class: High Sensitivity DNA Assay
Data Path: C:\...ents and Settings\Bioanalyzer\2015-10-12\2015-10-12_001.xad

Created: 10/12/2015 7:41:17 AM
Modified: 10/12/2015 8:22:19 AM

Electropherogram Summary Continued ...

sample 28: H3K27ac ctrl-4 [HiSeq224 SS Library]



Assay Class: High Sensitivity DNA Assay
Data Path: C:\...ents and Settings\Bioanalyzer\2015-10-12\2015-10-12_001.xad

Created: 10/12/2015 7:41:17 AM
Modified: 10/12/2015 8:22:19 AM

Electropherogram Summary Continued ...

sample 29: H3K27ac wnt3a-1 [HiSeq224 SS Library]



Assay Class: High Sensitivity DNA Assay
Data Path: C:\...ents and Settings\Bioanalyzer\2015-10-12\2015-10-12_001.xad

Created: 10/12/2015 7:41:17 AM
Modified: 10/12/2015 8:22:19 AM

Electropherogram Summary Continued ...

sample 30: H3K27ac wnt3a-2 [HiSeq224 SS Library]



Assay Class: High Sensitivity DNA Assay
Data Path: C:\...ents and Settings\Bioanalyzer\2015-10-12\2015-10-12_001.xad

Created: 10/12/2015 7:41:17 AM
Modified: 10/12/2015 8:22:19 AM

Electropherogram Summary Continued ...

sample 31: H3K27ac wnt3a-3 [HiSeq224 SS Library]



Assay Class: High Sensitivity DNA Assay
Data Path: C:\...ents and Settings\Bioanalyzer\2015-10-12\2015-10-12_001.xad

Created: 10/12/2015 7:41:17 AM
Modified: 10/12/2015 8:22:19 AM

Electropherogram Summary Continued ...

sample 32: H3K27ac wnt3a-4 [HiSeq224 SS Library]



Assay Class: High Sensitivity DNA Assay
Data Path: C:\...ents and Settings\Bioanalyzer\2015-10-12\2015-10-12_001.xad

Created: 10/12/2015 7:41:17 AM
Modified: 10/12/2015 8:22:19 AM

Electropherogram Summary Continued ...

sample 33: total input ctl-1 [HiSeq224 SS Library]



Assay Class: High Sensitivity DNA Assay
Data Path: C:\...ents and Settings\Bioanalyzer\2015-10-12\2015-10-12_001.xad

Created: 10/12/2015 7:41:17 AM
Modified: 10/12/2015 8:22:19 AM

Electropherogram Summary Continued ...

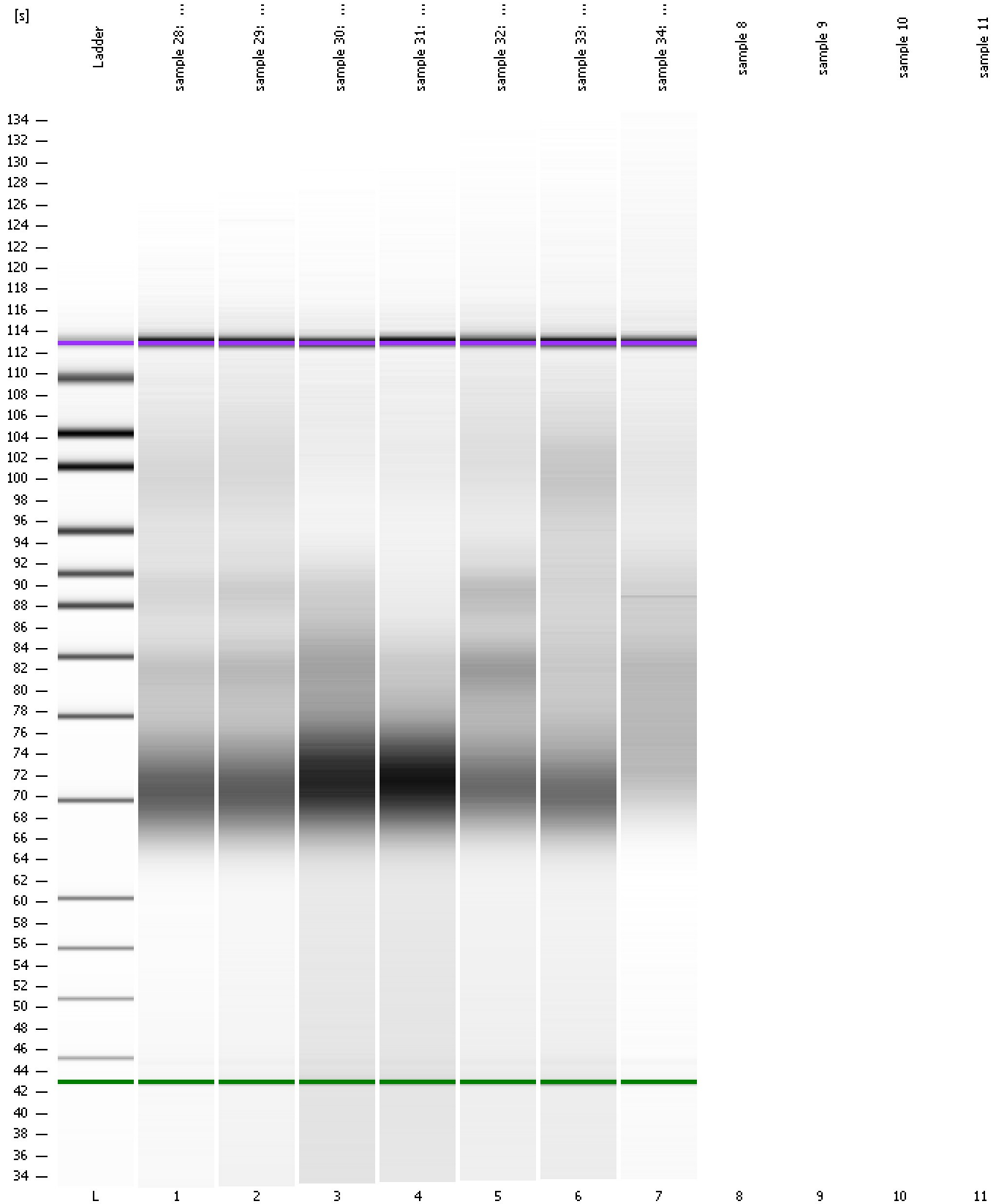
sample 34: total input wnt3a-1 [HiSeq224 SS Library]



Assay Class: High Sensitivity DNA Assay
Data Path: C:\...ents and Settings\Bioanalyzer\2015-10-12\2015-10-12_001.xad

Created: 10/12/2015 7:41:17 AM
Modified: 10/12/2015 8:22:19 AM

Gel Image

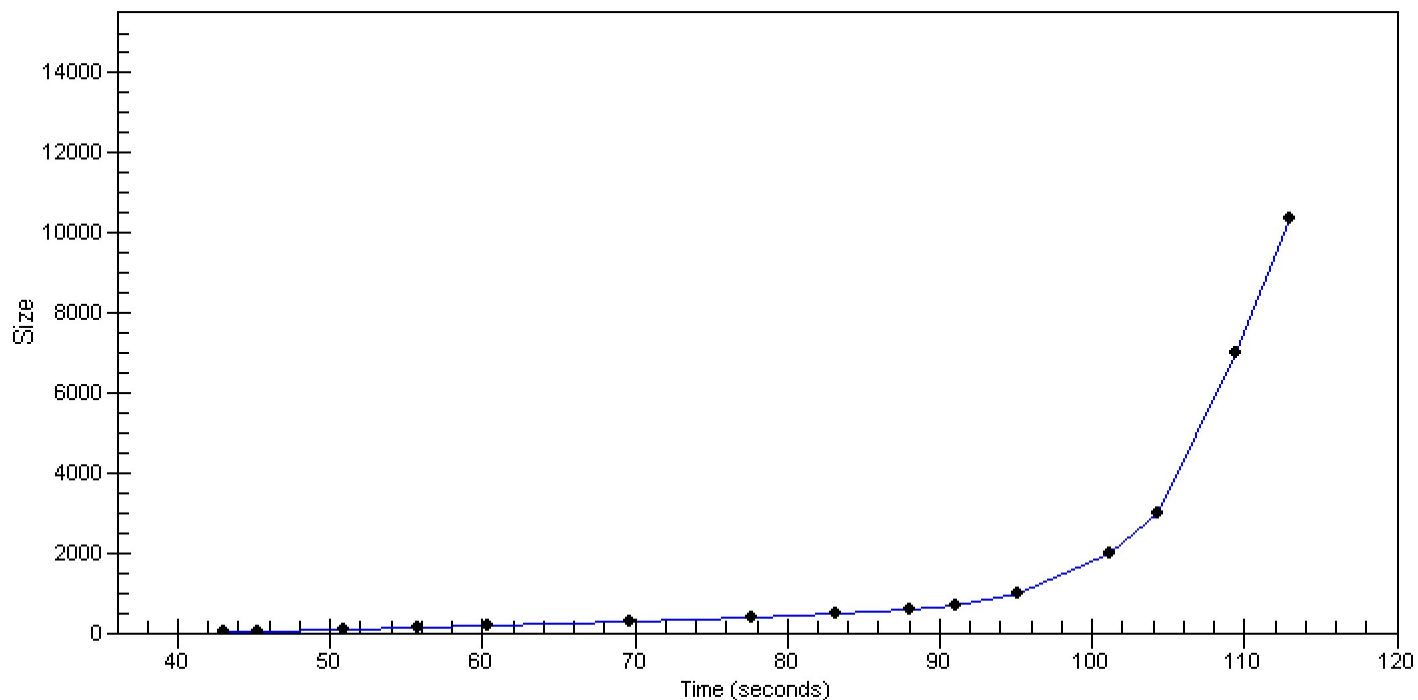


Assay Class: High Sensitivity DNA Assay
Data Path: C:\...ents and Settings\Bioanalyzer\2015-10-12\2015-10-12_001.xad

Created: 10/12/2015 7:41:17 AM
Modified: 10/12/2015 8:22:19 AM

Curves

Standard Curve



Assay Class: High Sensitivity DNA Assay
Data Path: C:\...ents and Settings\Bioanalyzer\2015-10-12\2015-10-12_001.xad

Created: 10/12/2015 7:41:17 AM
Modified: 10/12/2015 8:22:19 AM

Invalid Samples

Sample 8 has not been run, no results available.

Sample 9 has not been run, no results available.

Sample 10 has not been run, no results available.

Sample 11 has not been run, no results available.

Assay Class: High Sensitivity DNA Assay
 Data Path: C:\...ents and Settings\Bioanalyzer\2015-10-12\2015-10-12_001.xad

Created: 10/12/2015 7:41:17 AM
 Modified: 10/12/2015 8:22:19 AM

Run Logbook

Description	Number	Source	Category	Sub Category	Time	Time Zone	User	Host
Run ended on port 1 (Number of wells acquired: 8)		Instrument	Run		10/12/2015 8:11:09 AM	(GMT --07:00) Pacific Standard Time	UC Davis	D8XSMGH1
Run started on port 1 (File: C:\Documents and Settings\Bioanalyzer\2015-10-12\2015-10-12_001.xad)		Instrument	Run		10/12/2015 7:41:23 AM	(GMT --07:00) Pacific Standard Time	UC Davis	D8XSMGH1
Product Number : G2938B		Instrument	Run		10/12/2015 7:41:23 AM	(GMT --07:00) Pacific Standard Time	UC Davis	D8XSMGH1
Name :		Instrument	Run		10/12/2015 7:41:23 AM	(GMT --07:00) Pacific Standard Time	UC Davis	D8XSMGH1
Vendor : Agilent Technologies		Instrument	Run		10/12/2015 7:41:23 AM	(GMT --07:00) Pacific Standard Time	UC Davis	D8XSMGH1
Serial# : DE13701086		Instrument	Run		10/12/2015 7:41:23 AM	(GMT --07:00) Pacific Standard Time	UC Davis	D8XSMGH1
Firmware : C.01.069		Instrument	Run		10/12/2015 7:41:23 AM	(GMT --07:00) Pacific Standard Time	UC Davis	D8XSMGH1
Cartridge : Electrode		Instrument	Run		10/12/2015 7:41:23 AM	(GMT --07:00) Pacific Standard Time	UC Davis	D8XSMGH1