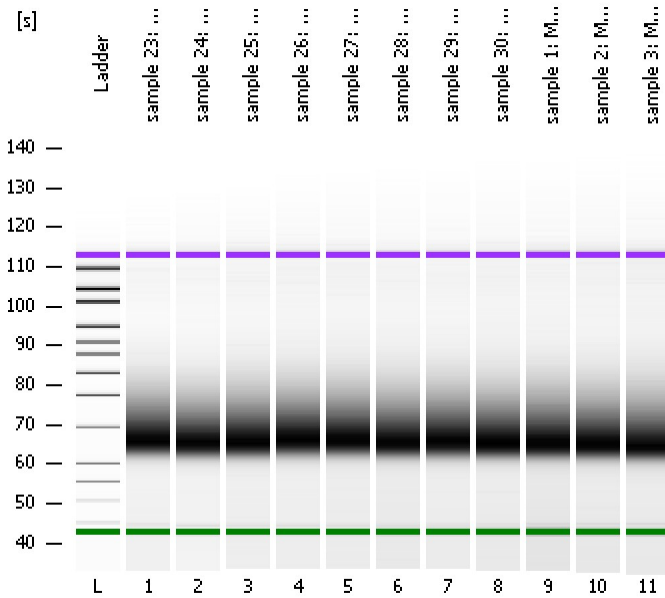


Assay Class: High Sensitivity DNA Assay
Data Path: C:\...ents and Settings\Bioanalyzer\2015-10-13\2015-10-13_003.xad

Created: 10/13/2015 1:12:55 PM
Modified: 10/13/2015 1:54:09 PM

Electrophoresis File Run Summary



Instrument Information:

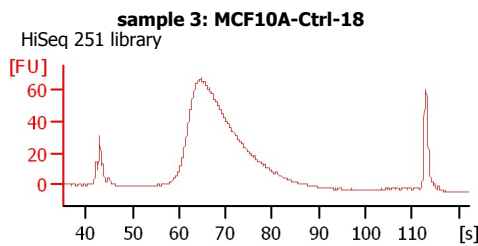
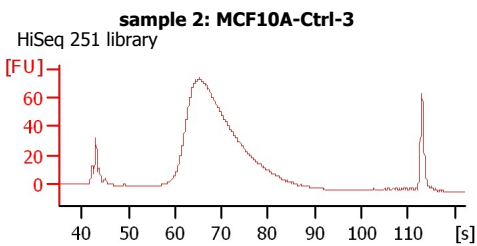
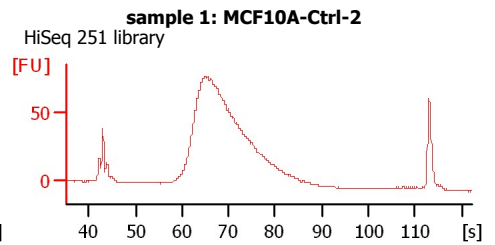
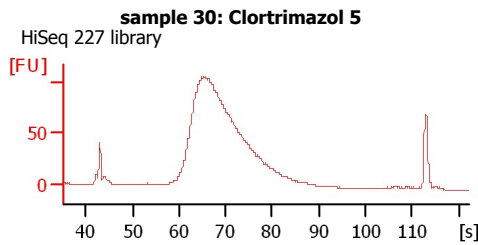
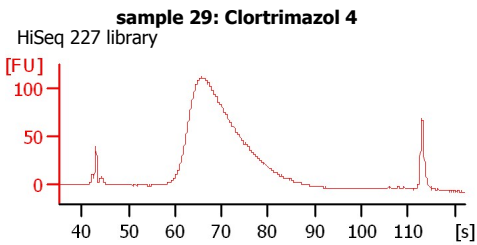
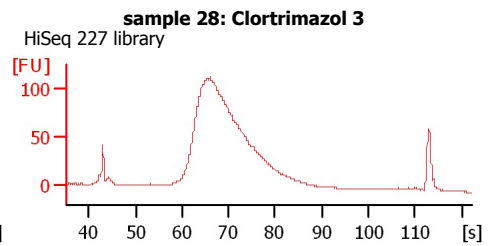
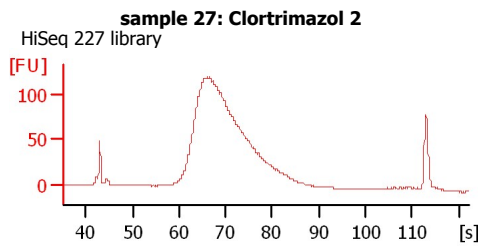
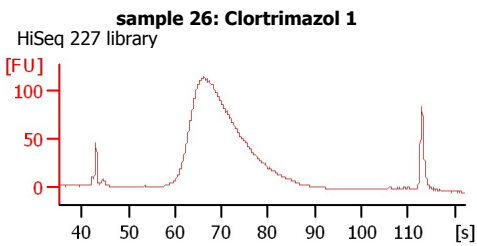
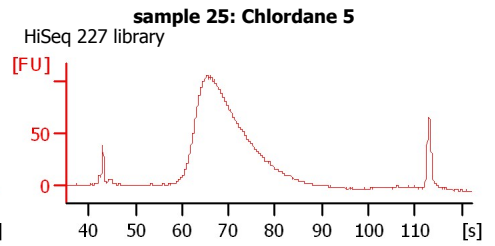
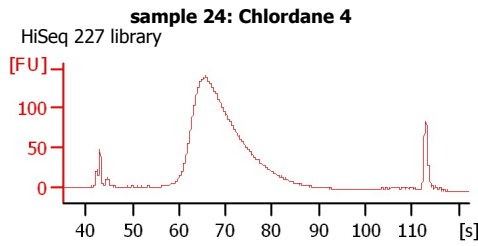
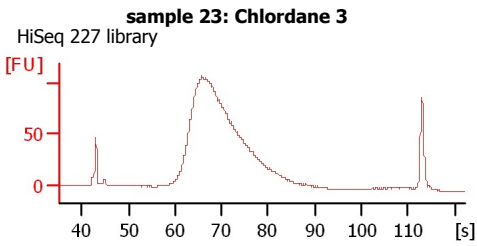
Instrument Name: DE13701086 Firmware: C.01.069
Serial#: DE13701086 Type: G2938B

Assay Information:

Assay Origin Path: C:\Program Files\Agilent\2100 bioanalyzer\2100 expert\assays\dsDNA\High Sensitivity DNA.xsy
Assay Class: High Sensitivity DNA Assay
Version: 1.03
Assay Comments: Copyright © 2003-2010 Agilent Technologies

Chip Information:

Chip Lot #:
Reagent Kit Lot #:
Chip Comments:



Assay Class: High Sensitivity DNA Assay
Data Path: C:\...ents and Settings\Bioanalyzer\2015-10-13\2015-10-13_003.xad

Created: 10/13/2015 1:12:55 PM
Modified: 10/13/2015 1:54:09 PM

Electrophoresis File Run Summary (Chip Summary)

Sample Name	Sample Comment	Rest. Digest	Status	Observation	Result Label	Result Color
sample 23: Chlordane 3	HiSeq 227 library	<input type="checkbox"/>	✓			
sample 24: Chlordane 4	HiSeq 227 library	<input type="checkbox"/>	✓			
sample 25: Chlordane 5	HiSeq 227 library	<input type="checkbox"/>	✓			
sample 26: Clotrimazol 1	HiSeq 227 library	<input type="checkbox"/>	✓			
sample 27: Clotrimazol 2	HiSeq 227 library	<input type="checkbox"/>	✓			
sample 28: Clotrimazol 3	HiSeq 227 library	<input type="checkbox"/>	✓			
sample 29: Clotrimazol 4	HiSeq 227 library	<input type="checkbox"/>	✓			
sample 30: Clotrimazol 5	HiSeq 227 library	<input type="checkbox"/>	✓			
sample 1: MCF10A-Ctrl-2	HiSeq 251 library	<input type="checkbox"/>	✓			
sample 2: MCF10A-Ctrl-3	HiSeq 251 library	<input type="checkbox"/>	✓			
sample 3: MCF10A-Ctrl-18	HiSeq 251 library	<input type="checkbox"/>	✓			
Ladder		<input type="checkbox"/>	✓			

Chip Lot #

Reagent Kit Lot #

Chip Comments :

Assay Class: High Sensitivity DNA Assay
Data Path: C:\...ents and Settings\Bioanalyzer\2015-10-13\2015-10-13_003.xad

Created: 10/13/2015 1:12:55 PM
Modified: 10/13/2015 1:54:09 PM

Electrophoresis Assay Details

General Analysis Settings

Number of Available Sample and Ladder Wells (Max.) : 12
Minimum Visible Range [s] : 32
Maximum Visible Range [s] : 138
Start Analysis Time Range [s] : 33
End Analysis Time Range [s] : 137.5
Ladder Concentration [pg/μl] : 1950
Uses Standard Area for Ladder Fragments
Lower Marker Concentration [pg/μl] : 125
Upper Marker Concentration [pg/μl] : 75
Used Upper Marker for Quantitation
Standard Curve Fit is Point to Point
Show Data Aligned to Lower and Upper Marker

Integrator Settings

Integration Start Time [s] : 33.05
Integration End Time [s] : 137
Slope Threshold : 0.8
Height Threshold [FU] : 5
Area Threshold : 0.1
Width Threshold [s] : 0.6
Baseline Plateau [s] : 0.5

Filter Settings

Filter Width [s] : 0.5
Polynomial Order : 4

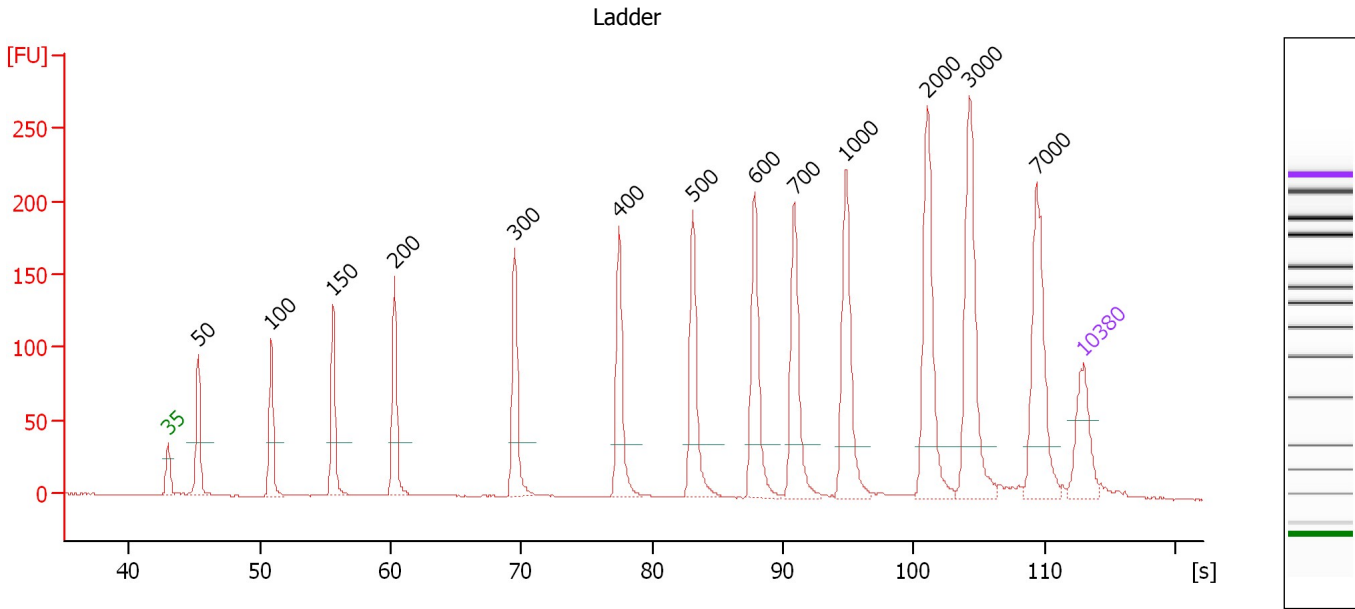
Ladder

Ladder Peak	Size	Area
1	35	160
2	50	210
3	100	208
4	150	221
5	200	242
6	300	270
7	400	305
8	500	306
9	600	336
10	700	321
11	1000	366
12	2000	413
13	3000	411
14	7000	400
15	10380	214

Assay Class: High Sensitivity DNA Assay
 Data Path: C:\...ents and Settings\Bioanalyzer\2015-10-13\2015-10-13_003.xad

Created: 10/13/2015 1:12:55 PM
 Modified: 10/13/2015 1:54:09 PM

Electropherogram Summary



Overall Results for Ladder

Noise: 0.2

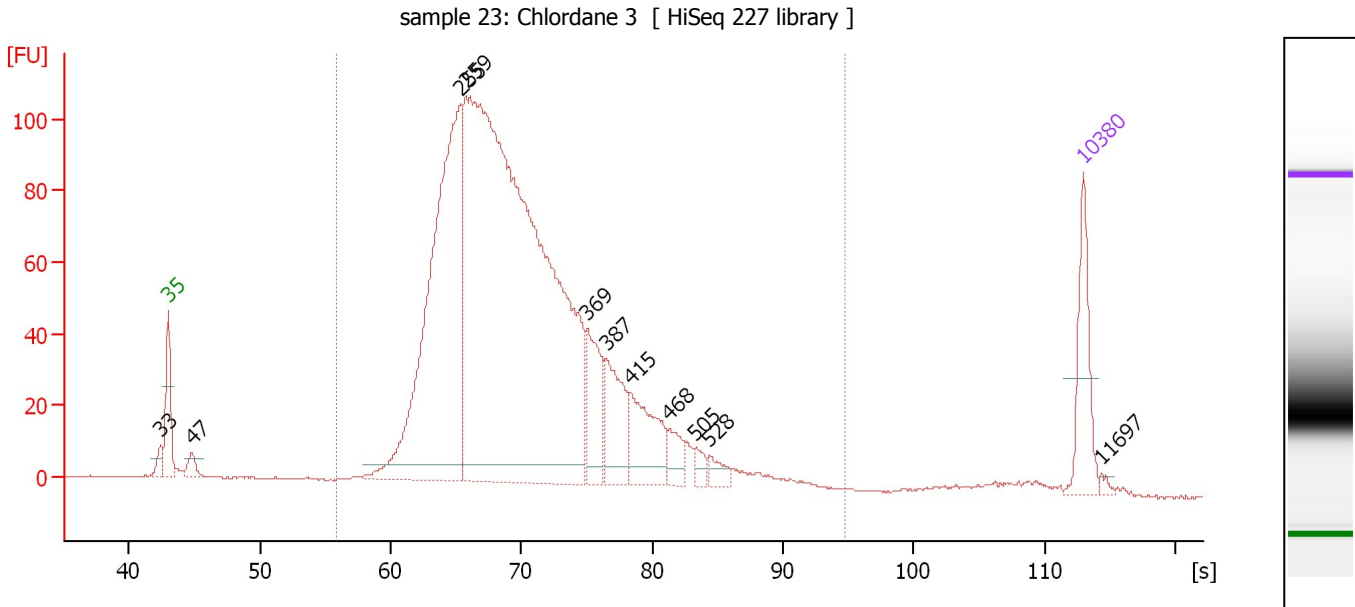
Peak table for Ladder

Peak	Size [bp]	Conc. [pg/μl]	Molarity [pmol/l]	Observations	Aligned Migration Time [s]
1	35	125.00	5,411.3	Lower Marker	43.00
2	50	150.00	4,545.5	Ladder Peak	45.32
3	100	150.00	2,272.7	Ladder Peak	50.89
4	150	150.00	1,515.2	Ladder Peak	55.61
5	200	150.00	1,136.4	Ladder Peak	60.29
6	300	150.00	757.6	Ladder Peak	69.51
7	400	150.00	568.2	Ladder Peak	77.49
8	500	150.00	454.5	Ladder Peak	83.10
9	600	150.00	378.8	Ladder Peak	87.87
10	700	150.00	324.7	Ladder Peak	90.90
11	1,000	150.00	227.3	Ladder Peak	94.82
12	2,000	150.00	113.6	Ladder Peak	101.06
13	3,000	150.00	75.8	Ladder Peak	104.27
14	7,000	150.00	32.5	Ladder Peak	109.39
15	10,380	75.00	10.9	Upper Marker	113.00

Assay Class: High Sensitivity DNA Assay
 Data Path: C:\...ents and Settings\Bioanalyzer\2015-10-13\2015-10-13_003.xad

Created: 10/13/2015 1:12:55 PM
 Modified: 10/13/2015 1:54:09 PM

Electropherogram Summary Continued ...



Overall Results for sample 1 : sample 23: Chlordane 3

Number of peaks found: 11 Corr. Area 1: 1,993.7
 Noise: 0.3

Peak table for sample 1 : sample 23: Chlordane 3

Peak	Size [bp]	Conc. [pg/μl]	Molarity [pmol/l]	Observations	Aligned Migration Time [s]
1	33	0.00	0.0		42.41
2	35	125.00	5,411.3	Lower Marker	43.00
3	47	24.02	778.6		44.81
4	255	783.26	4,653.1		65.37
5	259	1,915.20	11,183.5		65.77
6	369	104.17	428.2		74.98
7	387	104.02	406.9		76.48
8	415	110.84	404.5		78.34
9	468	33.50	108.5		81.29
10	505	16.35	49.1		83.33
11	528	19.36	55.6		84.42
12	10,380	75.00	10.9	Upper Marker	113.00
13	11,697	0.00	0.0		114.41

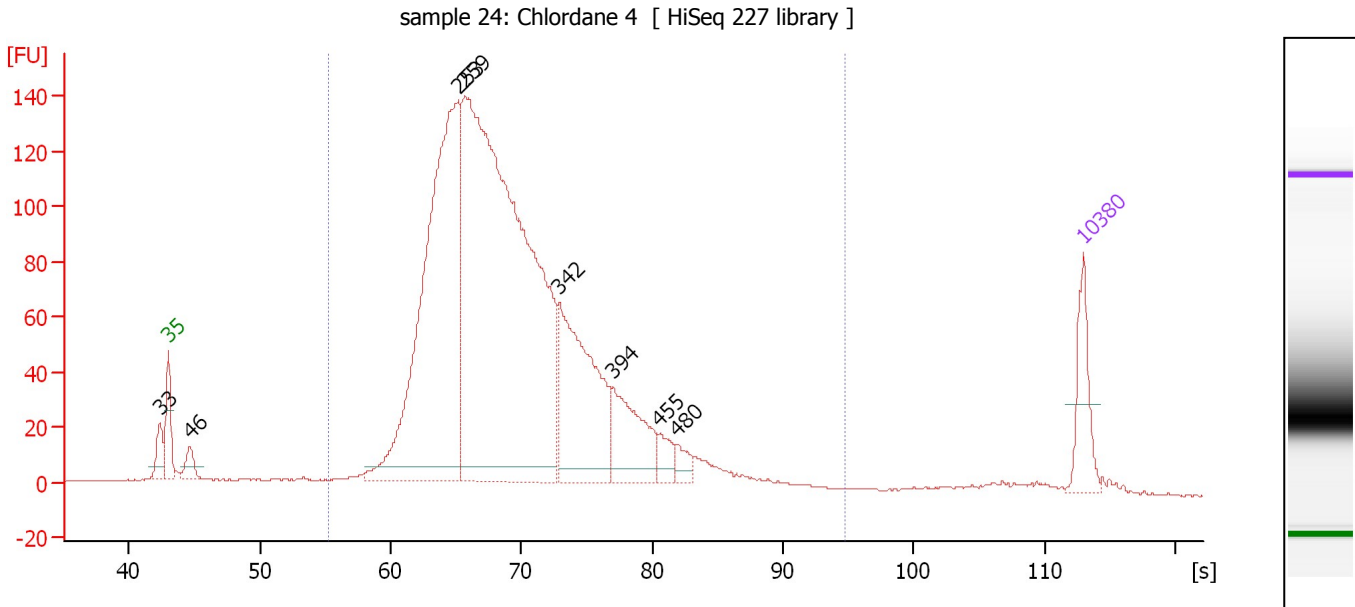
Region table for sample 1 : sample 23: Chlordane 3

From [s]	To [s]	Average Size [bp]	Corr. Area	Molarity [pmol/l]	Co Conc. lor [pg/μl]	% of Total	Size distribution in CV [%]
55.85	94.82	316	1,993.7	15,918.2	3,072.56	95	27.6

Assay Class: High Sensitivity DNA Assay
 Data Path: C:\...ents and Settings\Bioanalyzer\2015-10-13\2015-10-13_003.xad

Created: 10/13/2015 1:12:55 PM
 Modified: 10/13/2015 1:54:09 PM

Electropherogram Summary Continued ...



Overall Results for sample 2 : sample 24: Chlordane 4

Number of peaks found: 8 Corr. Area 1: 2,550.6
 Noise: 0.2

Peak table for sample 2 : sample 24: Chlordane 4

Peak	Size [bp]	Conc. [pg/μl]	Molarity [pmol/l]	Observations	Aligned Migration Time [s]
1	33	0.00	0.0		42.36
2	35	125.00	5,411.3	Lower Marker	43.00
3	46	44.17	1,463.5		44.66
4	253	1,140.03	6,834.8		65.15
5	259	1,965.20	11,509.0		65.70
6	342	410.29	1,815.9		72.89
7	394	171.90	660.5		77.03
8	455	36.81	122.5		80.58
9	480	29.09	91.9		81.96
10	10,380	75.00	10.9	Upper Marker	113.00

Region table for sample 2 : sample 24: Chlordane 4

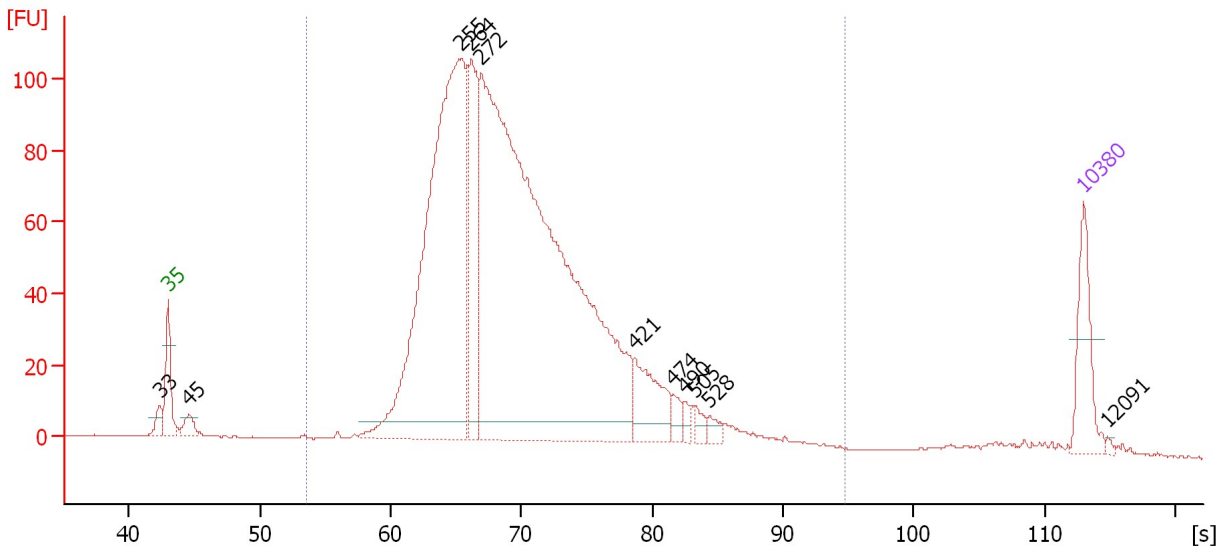
From [s]	To [s]	Average Size [bp]	Corr. Area	Molarity [pmol/l]	Co Conc. lor [pg/μl]	% of Total	Size distribution in CV [%]
55.25	94.82	308	2,550.6	20,916.1	3,924.44	93	28.4

Assay Class: High Sensitivity DNA Assay
 Data Path: C:\...ents and Settings\Bioanalyzer\2015-10-13\2015-10-13_003.xad

Created: 10/13/2015 1:12:55 PM
 Modified: 10/13/2015 1:54:09 PM

Electropherogram Summary Continued ...

sample 25: Chlordane 5 [HiSeq 227 library]



Overall Results for sample 3 : sample 25: Chlordane 5

Number of peaks found: 11 Corr. Area 1: 2,001.4
 Noise: 0.2

Peak table for sample 3 : sample 25: Chlordane 5

Peak	Size [bp]	Conc. [pg/μl]	Molarity [pmol/l]	Observations	Aligned Migration Time [s]
1	33	0.00	0.0		42.34
2	35	125.00	5,411.3	Lower Marker	43.00
3	45	26.95	901.1		44.59
4	255	1,086.10	6,443.8		65.40
5	264	248.10	1,423.8		66.19
6	272	1,887.16	10,506.7		66.94
7	421	106.97	385.2		78.66
8	474	20.30	64.9		81.65
9	490	13.81	42.7		82.54
10	505	14.46	43.4		83.34
11	528	13.96	40.1		84.42
12	10,380	75.00	10.9	Upper Marker	113.00
13	12,091	0.00	0.0		114.83

Region table for sample 3 : sample 25: Chlordane 5

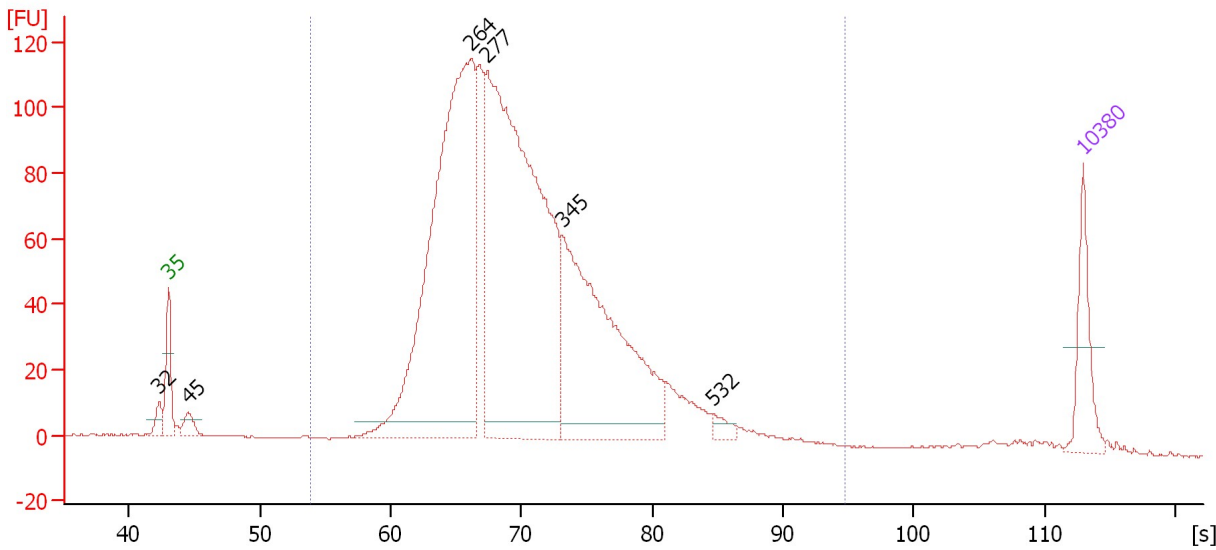
From [s]	To [s]	Average Size [bp]	Corr. Area	Molarity [pmol/l]	Co Conc. lor [pg/μl]	% of Total	Size distribution in CV [%]
53.59	94.82	313	2,001.4	18,031.7	3,427.13	95	28.8

Assay Class: High Sensitivity DNA Assay
 Data Path: C:\...ents and Settings\Bioanalyzer\2015-10-13\2015-10-13_003.xad

Created: 10/13/2015 1:12:55 PM
 Modified: 10/13/2015 1:54:09 PM

Electropherogram Summary Continued ...

sample 26: Clotrimazol 1 [HiSeq 227 library]



Overall Results for sample 4 : sample 26: Clotrimazol 1

Number of peaks found: 6 Corr. Area 1: 2,197.0
 Noise: 0.2

Peak table for sample 4 : sample 26: Clotrimazol 1

Peak	Size [bp]	Conc. [pg/μl]	Molarity [pmol/l]	Observations	Aligned Migration Time [s]
1	32	0.00	0.0		42.29
2	35	125.00	5,411.3	Lower Marker	43.00
3	45	31.24	1,062.2		44.48
4	264	1,141.93	6,549.7		66.21
5	277	1,278.07	6,988.9		67.40
6	345	619.61	2,719.7		73.12
7	532	19.37	55.1		84.65
8	10,380	75.00	10.9	Upper Marker	113.00

Region table for sample 4 : sample 26: Clotrimazol 1

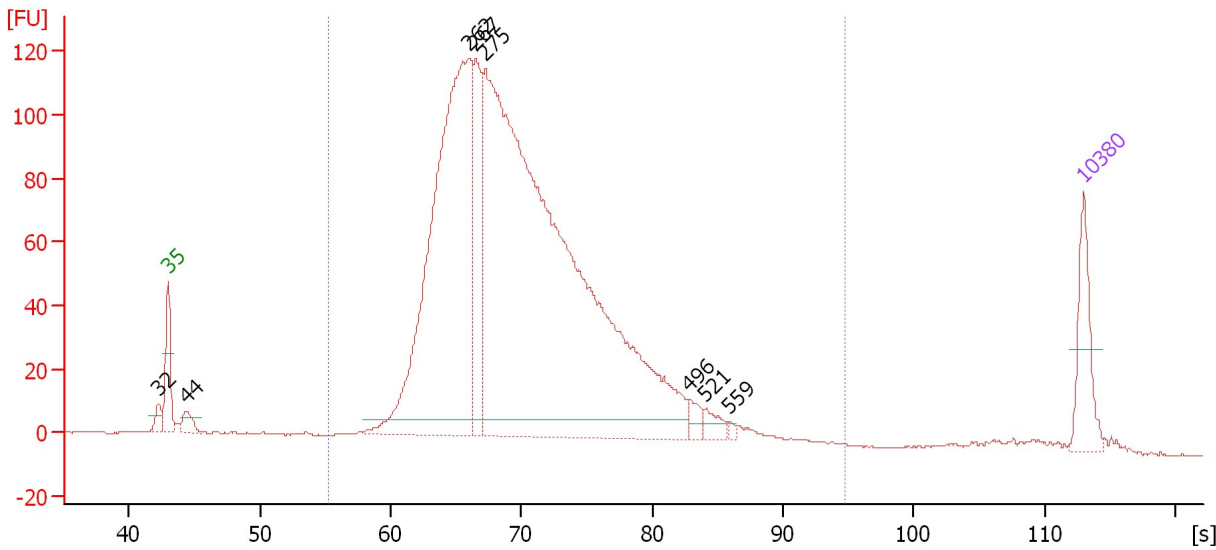
From [s]	To [s]	Average Size [bp]	Corr. Area	Molarity [pmol/l]	Co Conc. lor [pg/μl]	% of Total	Size distribution in CV [%]
53.90	94.82	319	2,197.0	17,680.8	3,424.97	95	28.6

Assay Class: High Sensitivity DNA Assay
 Data Path: C:\...ents and Settings\Bioanalyzer\2015-10-13\2015-10-13_003.xad

Created: 10/13/2015 1:12:55 PM
 Modified: 10/13/2015 1:54:09 PM

Electropherogram Summary Continued ...

sample 27: Clotrimazol 2 [HiSeq 227 library]



Overall Results for sample 5 : sample 27: Clotrimazol 2

Number of peaks found: 8 Corr. Area 1: 2,221.7
 Noise: 0.2

Peak table for sample 5 : sample 27: Clotrimazol 2

Peak	Size [bp]	Conc. [pg/μl]	Molarity [pmol/l]	Observations	Aligned Migration Time [s]
1	32	0.00	0.0		42.27
2	35	125.00	5,411.3	Lower Marker	43.00
3	44	31.10	1,076.2		44.36
4	262	1,073.42	6,202.6		66.03
5	267	214.38	1,214.4		66.51
6	275	2,127.62	11,707.5		67.24
7	496	20.21	61.7		82.90
8	521	22.54	65.5		84.11
9	559	5.39	14.6		85.90
10	10,380	75.00	10.9	Upper Marker	113.00

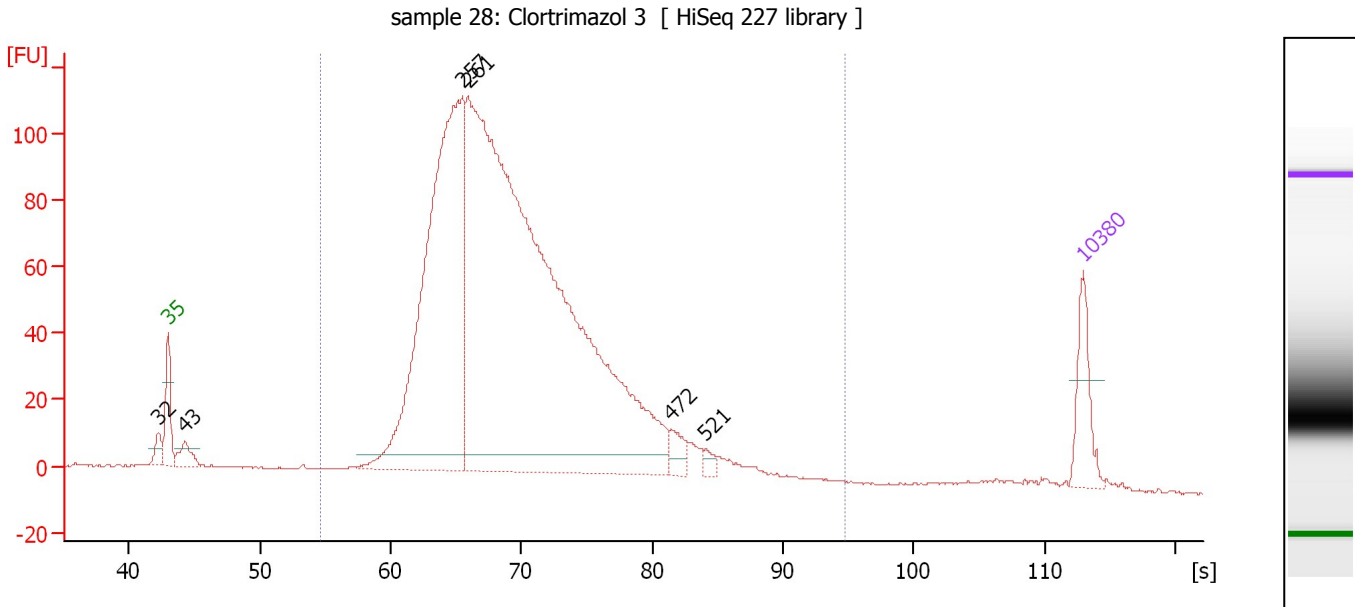
Region table for sample 5 : sample 27: Clotrimazol 2

From [s]	To [s]	Average Size [bp]	Corr. Area	Molarity [pmol/l]	Co Conc. lor [pg/μl]	% of Total	Size distribution in CV [%]
55.32	94.82	319	2,221.7	17,803.1	3,447.00	95	28.6

Assay Class: High Sensitivity DNA Assay
 Data Path: C:\...ents and Settings\Bioanalyzer\2015-10-13\2015-10-13_003.xad

Created: 10/13/2015 1:12:55 PM
 Modified: 10/13/2015 1:54:09 PM

Electropherogram Summary Continued ...



Overall Results for sample 6 : sample 28: Clotrimazol 3

Number of peaks found: 6 Corr. Area 1: 2,073.9
 Noise: 0.2

Peak table for sample 6 : sample 28: Clotrimazol 3

Peak	Size [bp]	Conc. [pg/μl]	Molarity [pmol/l]	Observations	Aligned Migration Time [s]
1	32	0.00	0.0		42.27
2	35	125.00	5,411.3	Lower Marker	43.00
3	43	47.80	1,676.8		44.27
4	257	1,209.90	7,135.2		65.54
5	261	2,721.65	15,791.1		65.93
6	472	34.19	109.9		81.50
7	521	13.99	40.7		84.08
8	10,380	75.00	10.9	Upper Marker	113.00

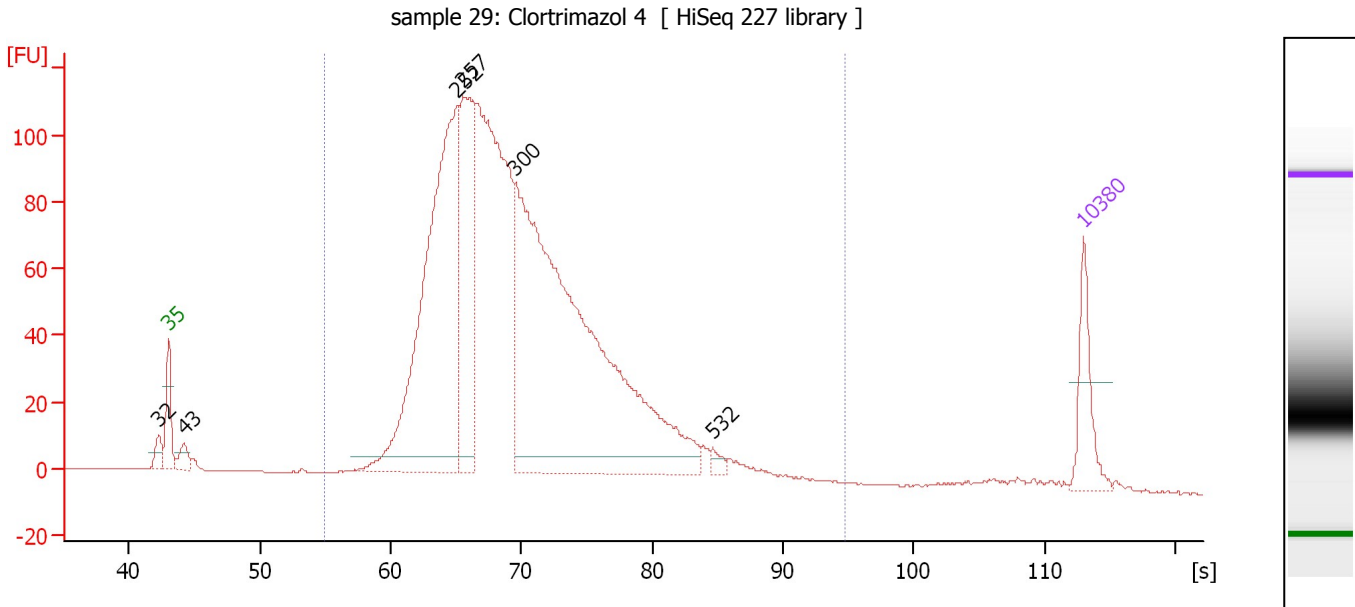
Region table for sample 6 : sample 28: Clotrimazol 3

From [s]	To [s]	Average Size [bp]	Corr. Area	Molarity [pmol/l]	Co Conc. lor [pg/μl]	% of Total	Size distribution in CV [%]
54.64	94.82	312	2,073.9	20,778.7	3,939.87	95	28.6

Assay Class: High Sensitivity DNA Assay
 Data Path: C:\...ents and Settings\Bioanalyzer\2015-10-13\2015-10-13_003.xad

Created: 10/13/2015 1:12:55 PM
 Modified: 10/13/2015 1:54:09 PM

Electropherogram Summary Continued ...



Overall Results for sample 7 : sample 29: Clotrimazol 4

Number of peaks found: 6 Corr. Area 1: 2,119.9
 Noise: 0.2

Peak table for sample 7 : sample 29: Clotrimazol 4

Peak	Size [bp]	Conc. [pg/μl]	Molarity [pmol/l]	Observations	Aligned Migration Time [s]
1	32	0.00	0.0		42.26
2	35	125.00	5,411.3	Lower Marker	43.00
3	43	35.16	1,248.8		44.18
4	252	932.56	5,603.2		65.10
5	257	393.04	2,317.4		65.54
6	300	1,432.76	7,227.7		69.54
7	532	14.34	40.8		84.63
8	10,380	75.00	10.9	Upper Marker	113.00

Region table for sample 7 : sample 29: Clotrimazol 4

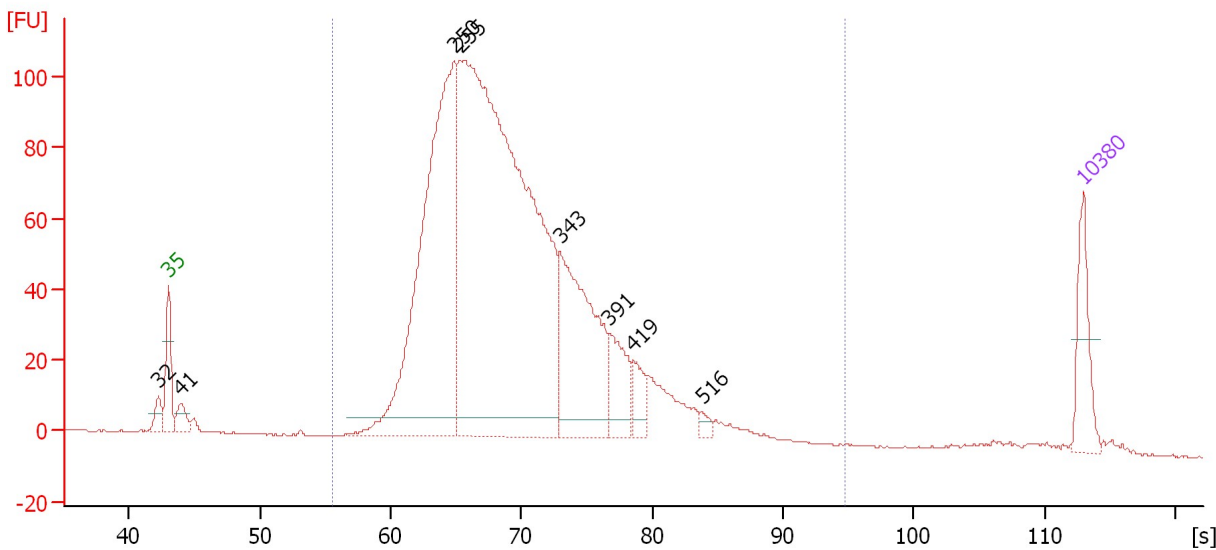
From [s]	To [s]	Average Size [bp]	Corr. Area	Molarity [pmol/l]	Co Conc. lor [pg/μl]	% of Total	Size distribution in CV [%]
55.00	94.82	315	2,119.9	19,149.4	3,662.72	95	28.6

Assay Class: High Sensitivity DNA Assay
 Data Path: C:\...ents and Settings\Bioanalyzer\2015-10-13\2015-10-13_003.xad

Created: 10/13/2015 1:12:55 PM
 Modified: 10/13/2015 1:54:09 PM

Electropherogram Summary Continued ...

sample 30: Clotrimazol 5 [HiSeq 227 library]



Overall Results for sample 8 : sample 30: Clotrimazol 5

Number of peaks found: 8 Corr. Area 1: 1,954.5
 Noise: 0.1

Peak table for sample 8 : sample 30: Clotrimazol 5

Peak	Size [bp]	Conc. [pg/μl]	Molarity [pmol/l]	Observations	Aligned Migration Time [s]
1	32	0.00	0.0		42.26
2	35	125.00	5,411.3	Lower Marker	43.00
3	41	37.44	1,369.4		43.99
4	250	962.76	5,840.5		64.88
5	255	1,881.81	11,175.1		65.37
6	343	372.16	1,642.6		72.96
7	391	96.66	375.0		76.73
8	419	44.98	162.5		78.57
9	516	12.57	36.9		83.88
10	10,380	75.00	10.9	Upper Marker	113.00

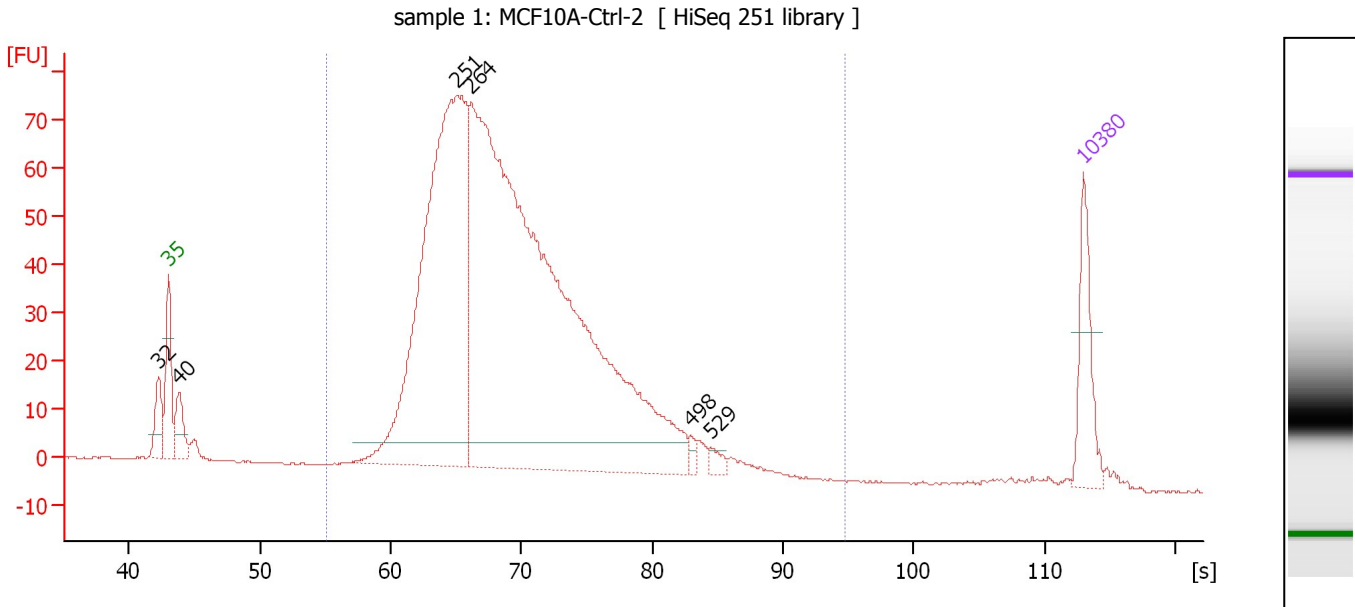
Region table for sample 8 : sample 30: Clotrimazol 5

From [s]	To [s]	Average Size [bp]	Corr. Area	Molarity [pmol/l]	Co Conc. lor [pg/μl]	% of Total	Size distribution in CV [%]
55.56	94.82	311	1,954.5	18,724.5	3,540.80	94	28.8

Assay Class: High Sensitivity DNA Assay
 Data Path: C:\...ents and Settings\Bioanalyzer\2015-10-13\2015-10-13_003.xad

Created: 10/13/2015 1:12:55 PM
 Modified: 10/13/2015 1:54:09 PM

Electropherogram Summary Continued ...



Overall Results for sample 9 : sample 1: MCF10A-Ctrl-2

Number of peaks found: 6 Corr. Area 1: 1,415.1
 Noise: 0.1

Peak table for sample 9 : sample 1: MCF10A-Ctrl-2

Peak	Size [bp]	Conc. [pg/μl]	Molarity [pmol/l]	Observations	Aligned Migration Time [s]
1	32	0.00	0.0		42.25
2	35	125.00	5,411.3	Lower Marker	43.00
3	40	60.25	2,254.4		43.85
4	251	997.80	6,020.4		65.00
5	264	1,908.03	10,946.6		66.20
6	498	10.56	32.1		82.96
7	529	12.78	36.6		84.46
8	10,380	75.00	10.9	Upper Marker	113.00

Region table for sample 9 : sample 1: MCF10A-Ctrl-2

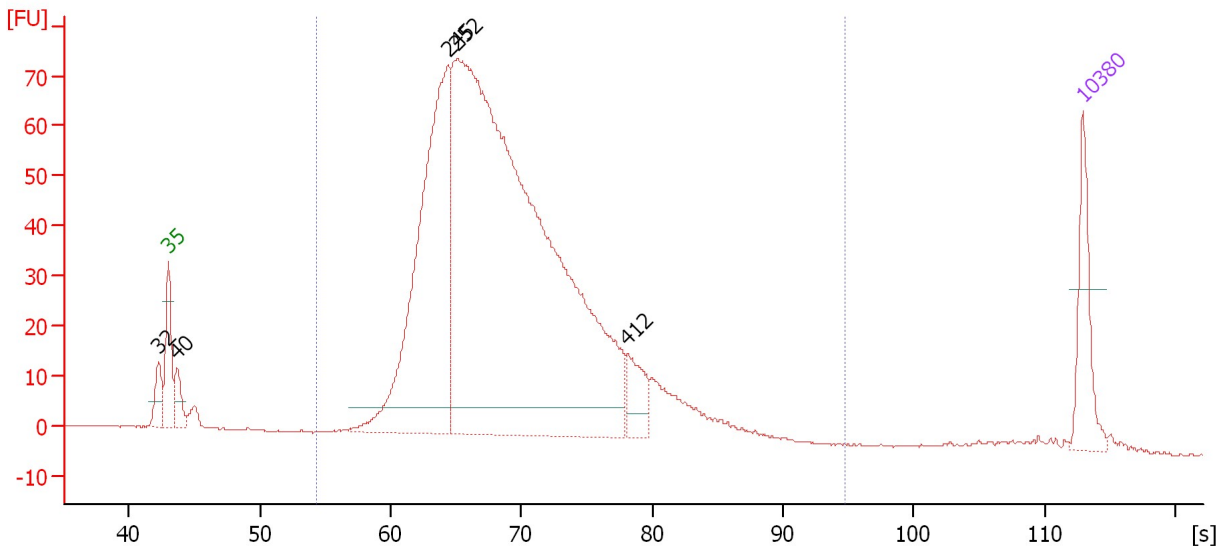
From [s]	To [s]	Average Size [bp]	Corr. Area	Molarity [pmol/l]	Co Conc. lor [pg/μl]	% of Total	Size distribution in CV [%]
55.17	94.82	309	1,415.1	15,080.8	2,844.61	93	27.1

Assay Class: High Sensitivity DNA Assay
 Data Path: C:\...ents and Settings\Bioanalyzer\2015-10-13\2015-10-13_003.xad

Created: 10/13/2015 1:12:55 PM
 Modified: 10/13/2015 1:54:09 PM

Electropherogram Summary Continued ...

sample 2: MCF10A-Ctrl-3 [HiSeq 251 library]



Overall Results for sample 10 : sample 2: MCF10A-Ctrl-3

Number of peaks found: 5 Corr. Area 1: 1,345.2
 Noise: 0.1

Peak table for sample 10 : sample 2: MCF10A-Ctrl-3

Peak	Size [bp]	Conc. [pg/μl]	Molarity [pmol/l]	Observations	Aligned Migration Time [s]
1	32	0.00	0.0		42.25
2	35	125.00	5,411.3	Lower Marker	43.00
3	40	44.67	1,711.7		43.70
4	245	686.60	4,251.3		64.41
5	252	1,975.26	11,861.7		65.11
6	412	60.01	220.8		78.15
7	10,380	75.00	10.9	Upper Marker	113.00

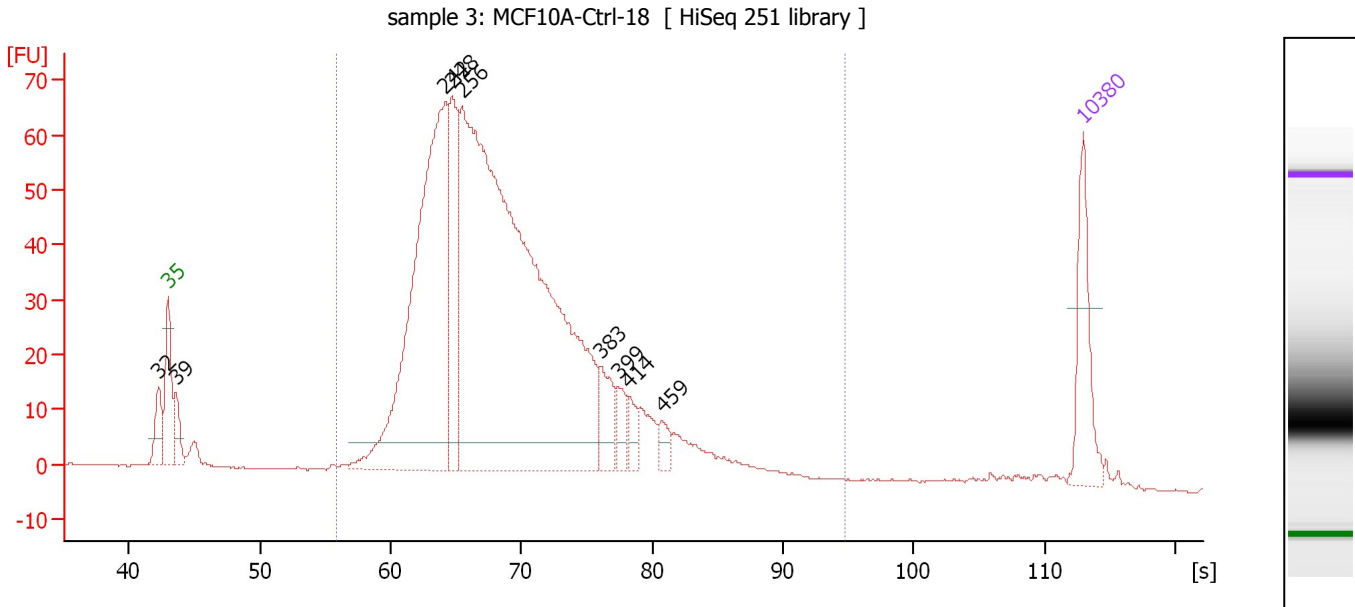
Region table for sample 10 : sample 2: MCF10A-Ctrl-3

From [s]	To [s]	Average Size [bp]	Corr. Area	Molarity [pmol/l]	Co Conc. lor [pg/μl]	% of Total	Size distribution in CV [%]
54.33	94.82	306	1,345.2	14,607.5	2,729.48	94	27.6

Assay Class: High Sensitivity DNA Assay
 Data Path: C:\...ents and Settings\Bioanalyzer\2015-10-13\2015-10-13_003.xad

Created: 10/13/2015 1:12:55 PM
 Modified: 10/13/2015 1:54:09 PM

Electropherogram Summary Continued ...



Overall Results for sample 11 : sample 3: MCF10A-Ctrl-18

Number of peaks found: 9 Corr. Area 1: 1,216.3
 Noise: 0.1

Peak table for sample 11 : sample 3: MCF10A-Ctrl-18

Peak	Size [bp]	Conc. [pg/μl]	Molarity [pmol/l]	Observations	Aligned Migration Time [s]
1	32	0.00	0.0		42.24
2	35	125.00	5,411.3	Lower Marker	43.00
3	39	40.64	1,594.7		43.56
4	242	671.82	4,204.4		64.17
5	248	180.41	1,101.5		64.73
6	256	1,411.04	8,338.7		65.49
7	383	52.55	207.9		76.13
8	399	25.76	97.9		77.39
9	414	21.73	79.6		78.25
10	459	18.39	60.7		80.79
11	10,380	75.00	10.9	Upper Marker	113.00

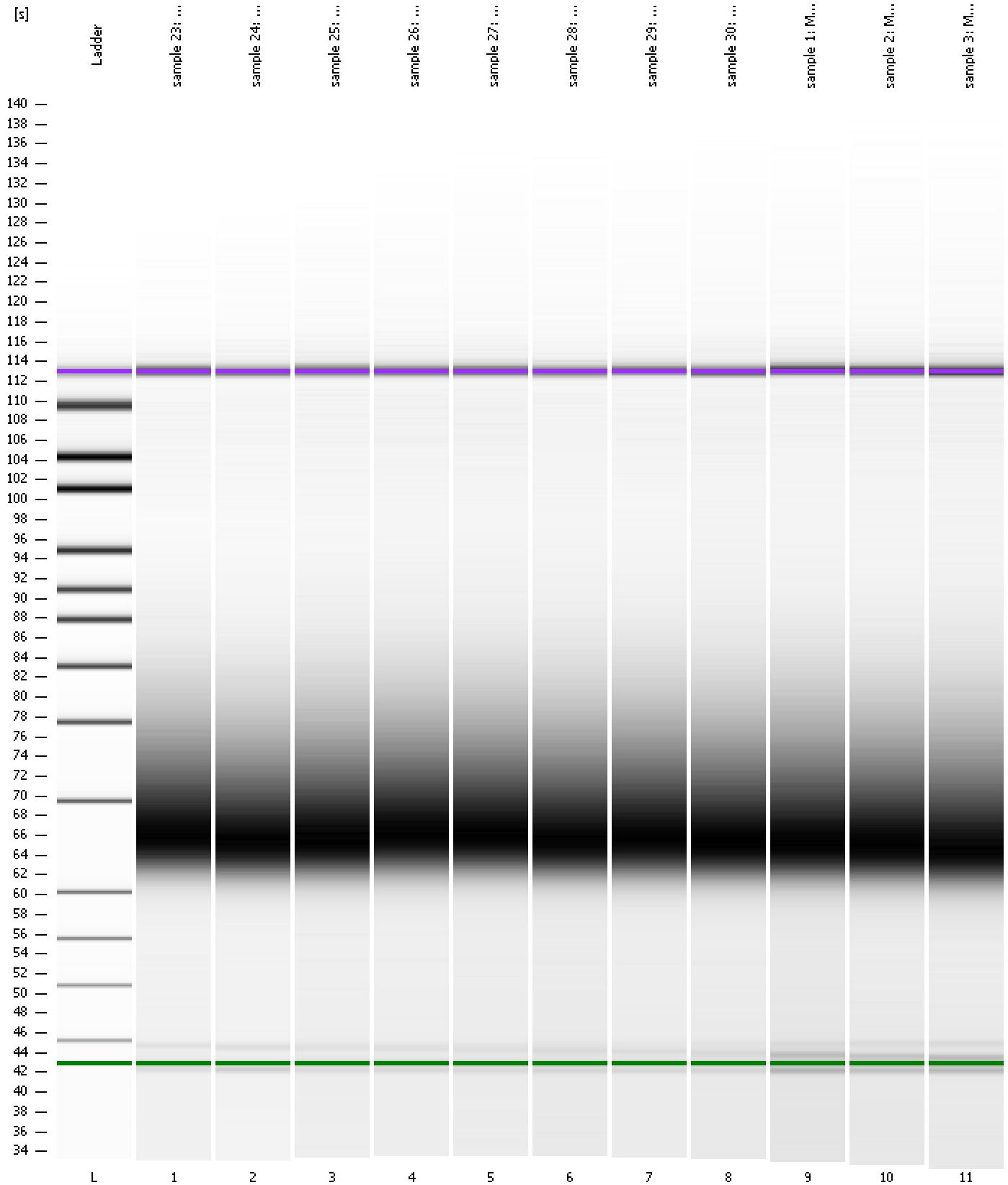
Region table for sample 11 : sample 3: MCF10A-Ctrl-18

From [s]	To [s]	Average Size [bp]	Corr. Area	Molarity [pmol/l]	Co Conc. lor [pg/μl]	% of Total	Size distribution in CV [%]
55.92	94.82	305	1,216.3	13,548.4	2,502.16	93	30.1

Assay Class: High Sensitivity DNA Assay
Data Path: C:\...ents and Settings\Bioanalyzer\2015-10-13\2015-10-13_003.xad

Created: 10/13/2015 1:12:55 PM
Modified: 10/13/2015 1:54:09 PM

Gel Image

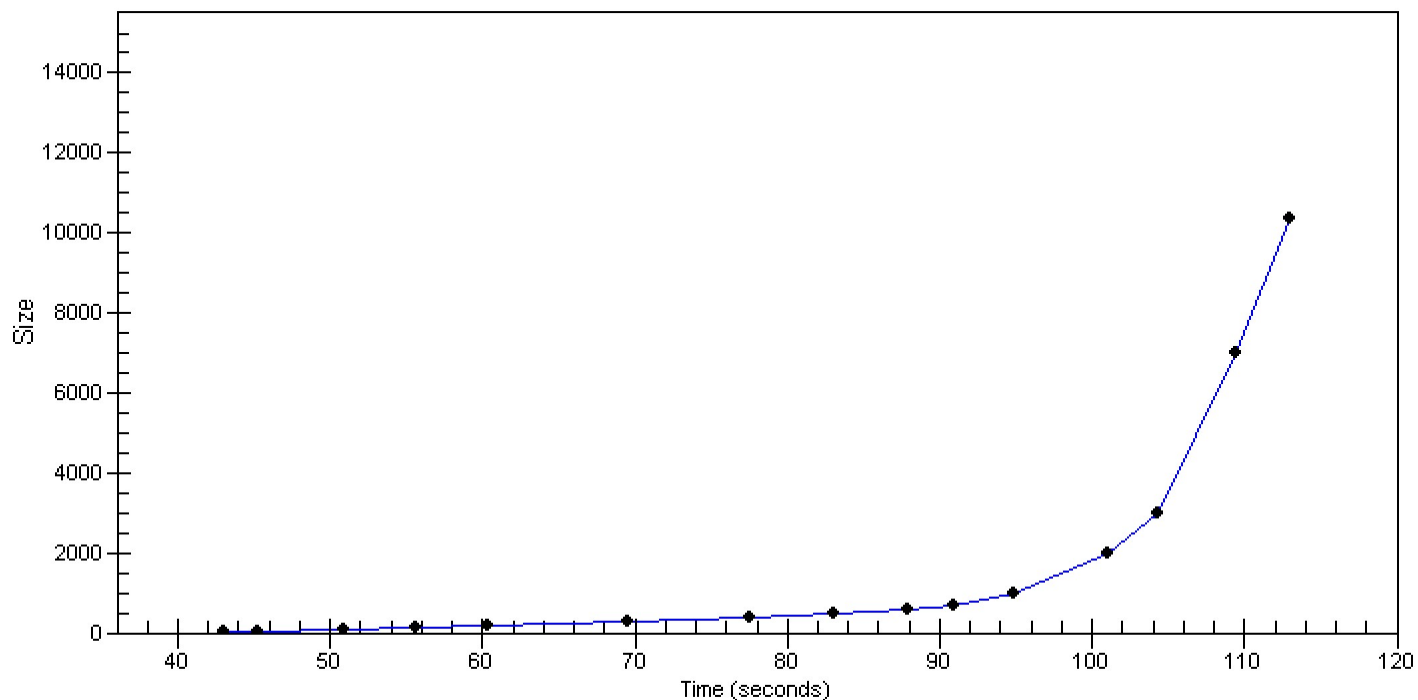


Assay Class: High Sensitivity DNA Assay
Data Path: C:\...ents and Settings\Bioanalyzer\2015-10-13\2015-10-13_003.xad

Created: 10/13/2015 1:12:55 PM
Modified: 10/13/2015 1:54:09 PM

Curves

Standard Curve



Assay Class: High Sensitivity DNA Assay
 Data Path: C:\...ents and Settings\Bioanalyzer\2015-10-13\2015-10-13_003.xad

Created: 10/13/2015 1:12:55 PM
 Modified: 10/13/2015 1:54:09 PM

Run Logbook

Description	Number	Source	Category	Sub Category	Time	Time Zone	User	Host
Run ended on port 1 (Number of wells acquired: 12)		Instrument	Run		10/13/2015 1:53:23 PM	(GMT --07:00) Pacific Standard Time	UC Davis	D8XSMGH1
Run started on port 1 (File: C:\Documents and Settings\Bioanalyzer\2015-10-13\2015-10-13_003.xad)		Instrument	Run		10/13/2015 1:13:00 PM	(GMT --07:00) Pacific Standard Time	UC Davis	D8XSMGH1
Product Number : G2938B		Instrument	Run		10/13/2015 1:13:00 PM	(GMT --07:00) Pacific Standard Time	UC Davis	D8XSMGH1
Name :		Instrument	Run		10/13/2015 1:13:00 PM	(GMT --07:00) Pacific Standard Time	UC Davis	D8XSMGH1
Vendor : Agilent Technologies		Instrument	Run		10/13/2015 1:13:00 PM	(GMT --07:00) Pacific Standard Time	UC Davis	D8XSMGH1
Serial# : DE13701086		Instrument	Run		10/13/2015 1:13:00 PM	(GMT --07:00) Pacific Standard Time	UC Davis	D8XSMGH1
Firmware : C.01.069		Instrument	Run		10/13/2015 1:13:00 PM	(GMT --07:00) Pacific Standard Time	UC Davis	D8XSMGH1
Cartridge : Electrode		Instrument	Run		10/13/2015 1:13:00 PM	(GMT --07:00) Pacific Standard Time	UC Davis	D8XSMGH1