

Assay Class: High Sensitivity DNA Assay
Data Path: C:\...ents and Settings\Bioanalyzer\2015-10-15\2015-10-15_003.xad

Created: 10/15/2015 3:18:46 PM
Modified: 10/15/2015 3:58:59 PM

Electrophoresis File Run Summary

Instrument Information:

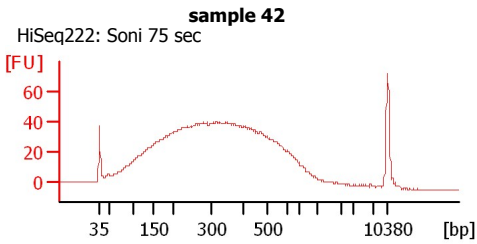
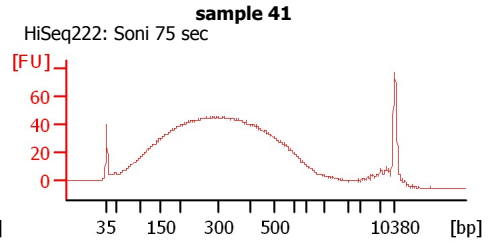
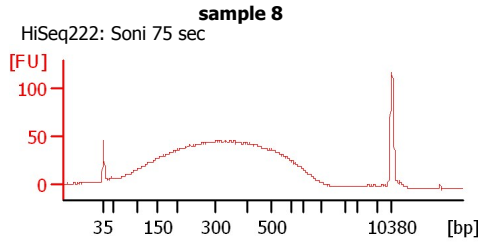
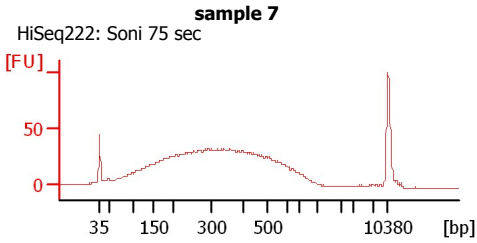
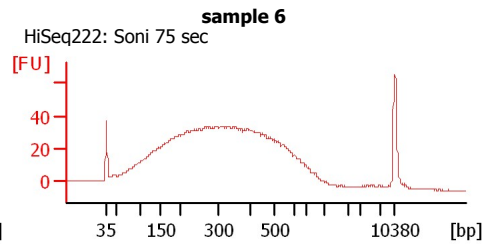
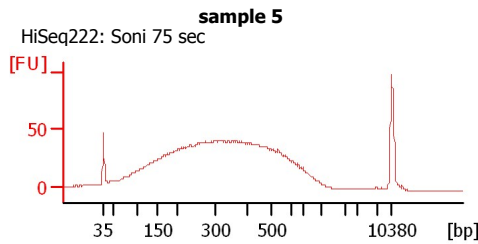
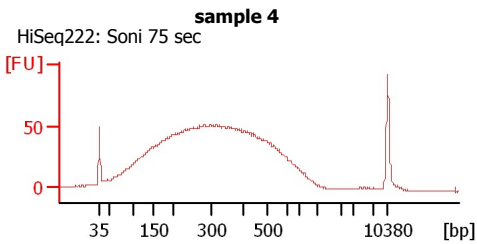
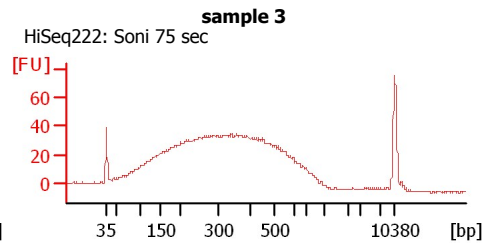
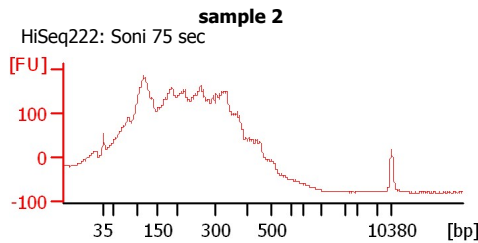
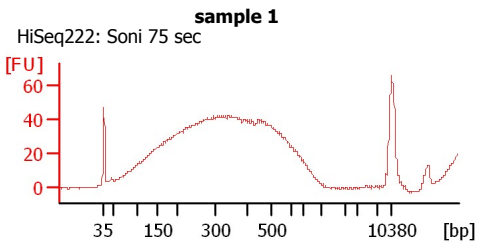
Instrument Name: DE13701086 Firmware: C.01.069
Serial#: DE13701086 Type: G2938B

Assay Information:

Assay Origin Path: C:\Program Files\Agilent\2100 bioanalyzer\2100 expert\assays\dsDNA\High Sensitivity DNA.xsy
Assay Class: High Sensitivity DNA Assay
Version: 1.03
Assay Comments: Copyright © 2003-2010 Agilent Technologies

Chip Information:

Chip Lot #:
Reagent Kit Lot #:
Chip Comments:



Assay Class: High Sensitivity DNA Assay
 Data Path: C:\...ents and Settings\Bioanalyzer\2015-10-15\2015-10-15_003.xad

Created: 10/15/2015 3:18:46 PM
 Modified: 10/15/2015 3:58:59 PM

Electrophoresis File Run Summary (Chip Summary)

Sample Name	Sample Comment	Rest. Digest	Status	Observation	Result Label	Result Color
sample 1	HiSeq222: Soni 75 sec	<input type="checkbox"/>	✓			
sample 2	HiSeq222: Soni 75 sec	<input type="checkbox"/>	✓			
sample 3	HiSeq222: Soni 75 sec	<input type="checkbox"/>	✓			
sample 4	HiSeq222: Soni 75 sec	<input type="checkbox"/>	✓			
sample 5	HiSeq222: Soni 75 sec	<input type="checkbox"/>	✓			
sample 6	HiSeq222: Soni 75 sec	<input type="checkbox"/>	✓			
sample 7	HiSeq222: Soni 75 sec	<input type="checkbox"/>	✓			
sample 8	HiSeq222: Soni 75 sec	<input type="checkbox"/>	✓			
sample 41	HiSeq222: Soni 75 sec	<input type="checkbox"/>	✓			
sample 42	HiSeq222: Soni 75 sec	<input type="checkbox"/>	✓			
sample 11	HiSeq222: Soni 75 sec	<input type="checkbox"/>	✓			
Ladder		<input type="checkbox"/>	✓			

Chip Lot #

Reagent Kit Lot #

Chip Comments :

Assay Class: High Sensitivity DNA Assay
Data Path: C:\...ents and Settings\Bioanalyzer\2015-10-15\2015-10-15_003.xad

Created: 10/15/2015 3:18:46 PM
Modified: 10/15/2015 3:58:59 PM

Electrophoresis Assay Details

General Analysis Settings

Number of Available Sample and Ladder Wells (Max.) : 12
Minimum Visible Range [s] : 32
Maximum Visible Range [s] : 138
Start Analysis Time Range [s] : 33
End Analysis Time Range [s] : 137.5
Ladder Concentration [pg/μl] : 1950
Uses Standard Area for Ladder Fragments
Lower Marker Concentration [pg/μl] : 125
Upper Marker Concentration [pg/μl] : 75
Used Upper Marker for Quantitation
Standard Curve Fit is Point to Point
Show Data Aligned to Lower and Upper Marker

Integrator Settings

Integration Start Time [s] : 33.05
Integration End Time [s] : 137
Slope Threshold : 0.8
Height Threshold [FU] : 5
Area Threshold : 0.1
Width Threshold [s] : 0.6
Baseline Plateau [s] : 0.5

Filter Settings

Filter Width [s] : 0.5
Polynomial Order : 4

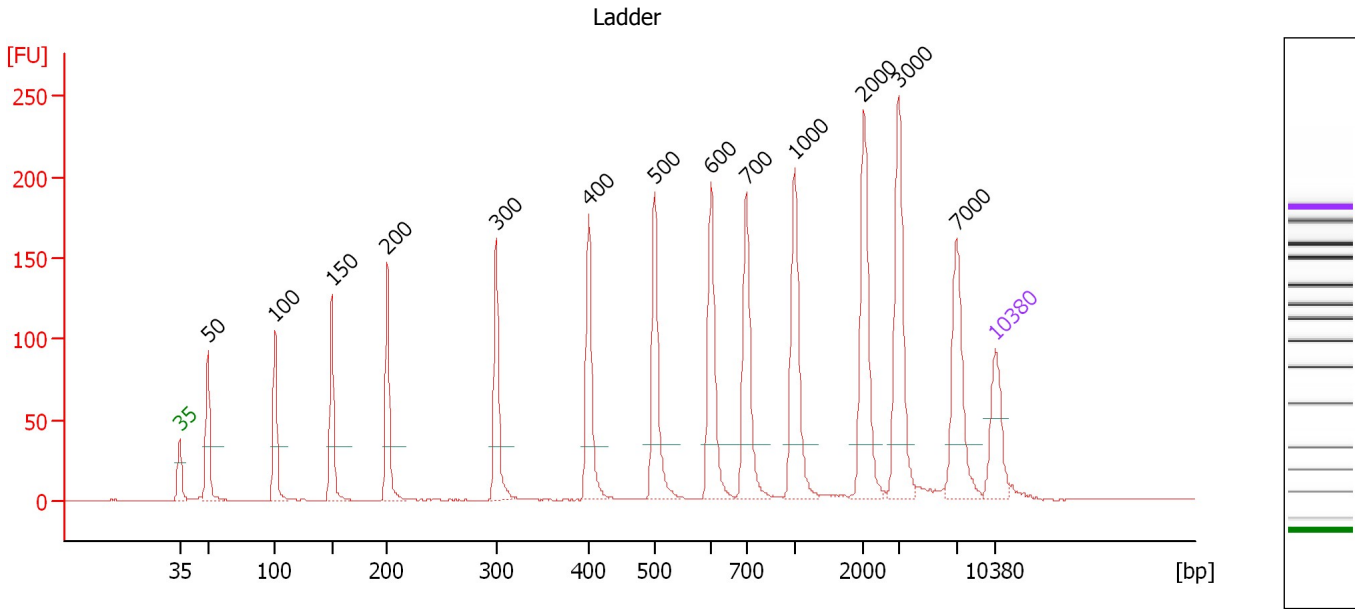
Ladder

Ladder Peak	Size	Area
1	35	160
2	50	210
3	100	208
4	150	221
5	200	242
6	300	270
7	400	305
8	500	306
9	600	336
10	700	321
11	1000	366
12	2000	413
13	3000	411
14	7000	400
15	10380	214

Assay Class: High Sensitivity DNA Assay
 Data Path: C:\...ents and Settings\Bioanalyzer\2015-10-15\2015-10-15_003.xad

Created: 10/15/2015 3:18:46 PM
 Modified: 10/15/2015 3:58:59 PM

Electropherogram Summary



Overall Results for Ladder

Noise: 0.2

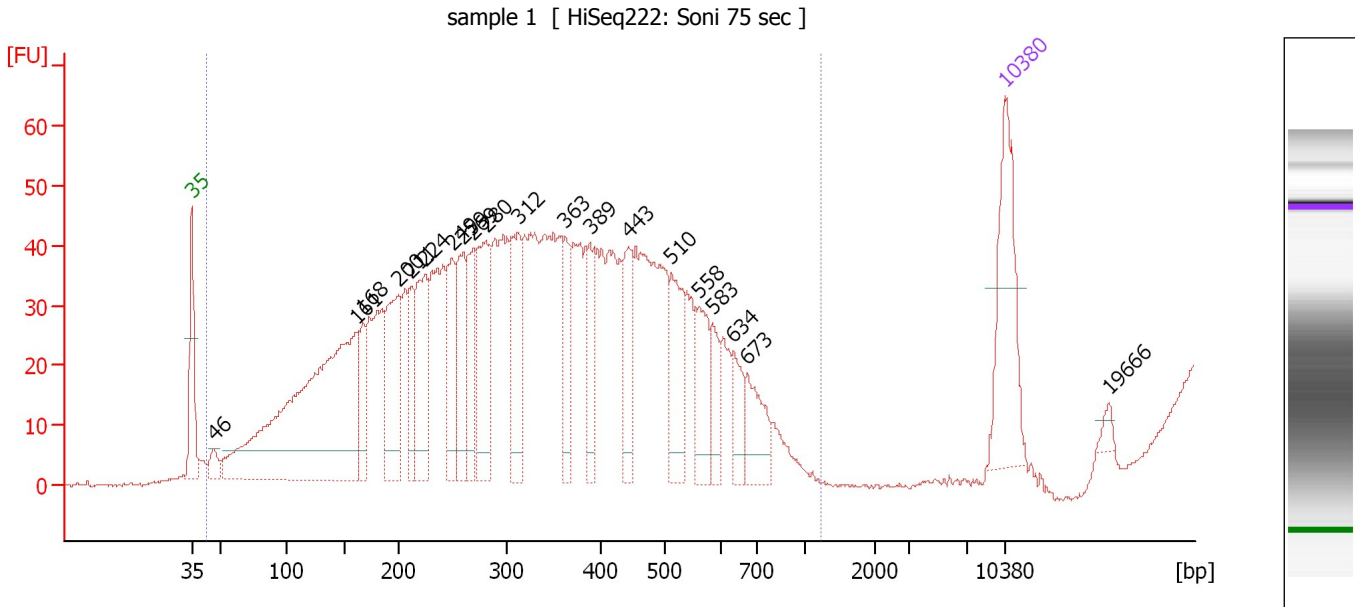
Peak table for Ladder

Peak	Size [bp]	Conc. [pg/μl]	Molarity [pmol/l]	Observations	Aligned Migration Time [s]
1	35	125.00	5,411.3	Lower Marker	43.00
2	50	150.00	4,545.5	Ladder Peak	45.46
3	100	150.00	2,272.7	Ladder Peak	51.21
4	150	150.00	1,515.2	Ladder Peak	56.08
5	200	150.00	1,136.4	Ladder Peak	60.86
6	300	150.00	757.6	Ladder Peak	70.18
7	400	150.00	568.2	Ladder Peak	78.16
8	500	150.00	454.5	Ladder Peak	83.82
9	600	150.00	378.8	Ladder Peak	88.65
10	700	150.00	324.7	Ladder Peak	91.66
11	1,000	150.00	227.3	Ladder Peak	95.84
12	2,000	150.00	113.6	Ladder Peak	101.77
13	3,000	150.00	75.8	Ladder Peak	104.74
14	7,000	150.00	32.5	Ladder Peak	109.71
15	10,380	75.00	10.9	Upper Marker	113.00

Assay Class: High Sensitivity DNA Assay
 Data Path: C:\...ents and Settings\Bioanalyzer\2015-10-15\2015-10-15_003.xad

Created: 10/15/2015 3:18:46 PM
 Modified: 10/15/2015 3:58:59 PM

Electropherogram Summary Continued ...



Overall Results for sample 1 : sample 1

Number of peaks found: 20 Corr. Area 1: 1,595.7
 Noise: 0.2

Peak table for sample 1 : sample 1

Peak	Size [bp]	Conc. [pg/μl]	Molarity [pmol/l]	Observations	Aligned Migration Time [s]
1	35	125.00	5,411.3	Lower Marker	43.00
2	46	16.45	536.2		44.88
3	161	438.37	4,121.6		57.15
4	168	42.23	381.1		57.79
5	200	101.84	773.1		60.82
6	211	45.71	327.6		61.92
7	224	95.95	649.8		63.07
8	249	68.85	419.2		65.41
9	259	68.76	401.9		66.38
10	269	54.25	306.0		67.25
11	280	86.92	469.7		68.35
12	312	76.47	371.1		71.16
13	363	42.39	177.0		75.20
14	389	36.17	140.8		77.31
15	443	51.70	176.7		80.62
16	510	61.11	181.6		84.29
17	558	44.98	122.1		86.64
18	583	27.23	70.7		87.83
19	634	27.76	66.3		89.67
20	673	38.09	85.7		90.86
21	10,380	75.00	10.9	Upper Marker	113.00
22	19,666	0.00	0.0		122.05


Assay Class: High Sensitivity DNA Assay
Data Path: C:\...ents and Settings\Bioanalyzer\2015-10-15\2015-10-15_003.xad

Created: 10/15/2015 3:18:46 PM
Modified: 10/15/2015 3:58:59 PM

Electropherogram Summary Continued ...

... Region table for sample 1 :

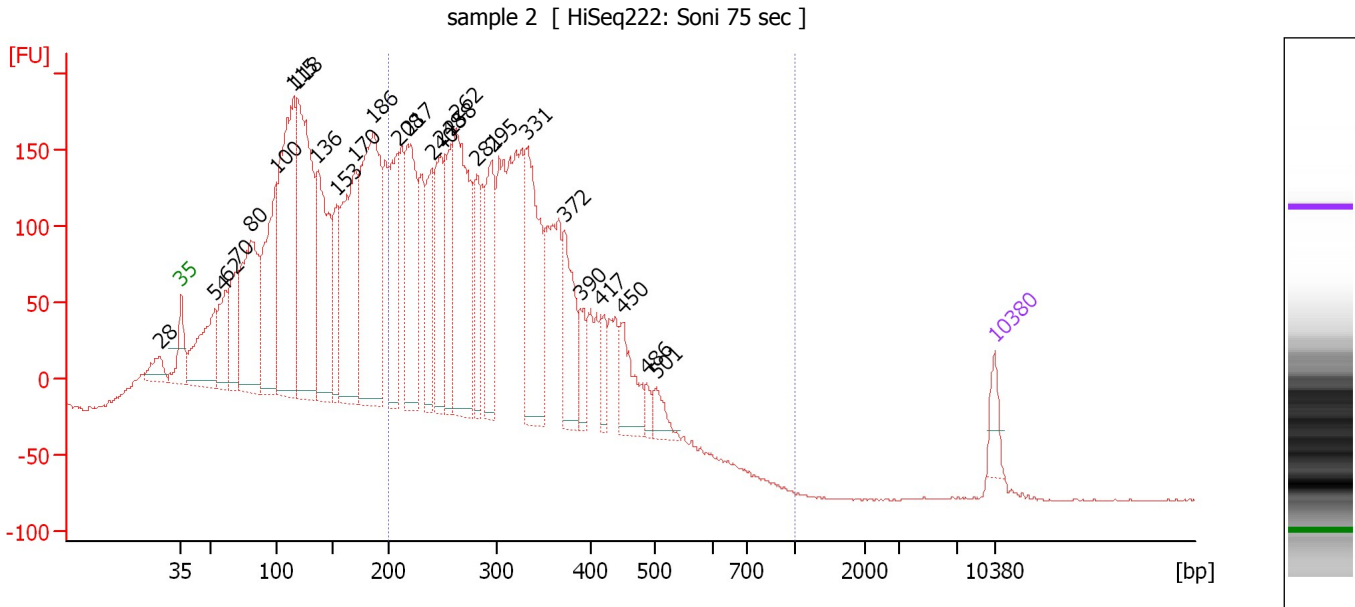
sample 1

From [bp]	To [bp]	Average Size [bp]	Corr. Area	Molarity [pmol/l]	Co Conc. lor [pg/μl]	% of Total	Size distribution in CV [%]
42	1,227	324	1,595.7	14,562.4	 2,110.06	100	42.7

Assay Class: High Sensitivity DNA Assay
 Data Path: C:\...ents and Settings\Bioanalyzer\2015-10-15\2015-10-15_003.xad

Created: 10/15/2015 3:18:46 PM
 Modified: 10/15/2015 3:58:59 PM

Electropherogram Summary Continued ...



Overall Results for sample 2 : sample 2

Number of peaks found: 27 Corr. Area 1: 4,691.5
 Noise: 0.6

Peak table for sample 2 : sample 2

Peak	Size [bp]	Conc. [pg/μl]	Molarity [pmol/l]	Observations	Aligned Migration Time [s]
1	28	0.00	0.0		41.12
2	35	125.00	5,411.3	Lower Marker	43.00
3	54	496.96	13,961.9		45.91
4	62	319.00	7,784.1		46.85
5	70	378.40	8,208.5		47.74
6	80	932.74	17,565.1		48.96
7	100	779.88	11,859.4		51.17
8	115	1,426.44	18,873.7		52.62
9	118	1,417.92	18,149.9		53.00
10	136	834.23	9,313.3		54.69
11	153	360.14	3,563.5		56.38
12	170	912.40	8,140.0		57.98
13	186	1,358.15	11,060.8		59.53
14	208	469.49	3,414.1		61.64
15	217	717.03	4,996.9		62.48
16	240	364.12	2,298.0		64.60
17	248	456.04	2,790.4		65.30
18	258	386.06	2,269.9		66.24
19	262	959.68	5,555.6		66.62
20	281	284.66	1,532.9		68.45
21	295	459.93	2,362.6		69.71
22	331	685.72	3,137.2		72.67
23	372	368.78	1,502.9		75.91
24	390	126.58	491.7		77.37
25	417	109.98	400.0		79.10

Assay Class: High Sensitivity DNA Assay
 Data Path: C:\...ents and Settings\Bioanalyzer\2015-10-15\2015-10-15_003.xad

Created: 10/15/2015 3:18:46 PM
 Modified: 10/15/2015 3:58:59 PM

Electropherogram Summary Continued ...

... Peak table for sample 2 : sample 2

Peak	Size [bp]	Conc. [pg/ μ l]	Molarity [pmol/l]	Observations	Aligned Migration Time [s]
26	450	226.50	762.9		80.98
27	486	45.28	141.1		83.05
28	501	90.15	272.4		83.89
29	10,380	75.00	10.9	Upper Marker	113.00

Region table for sample 2 : sample 2

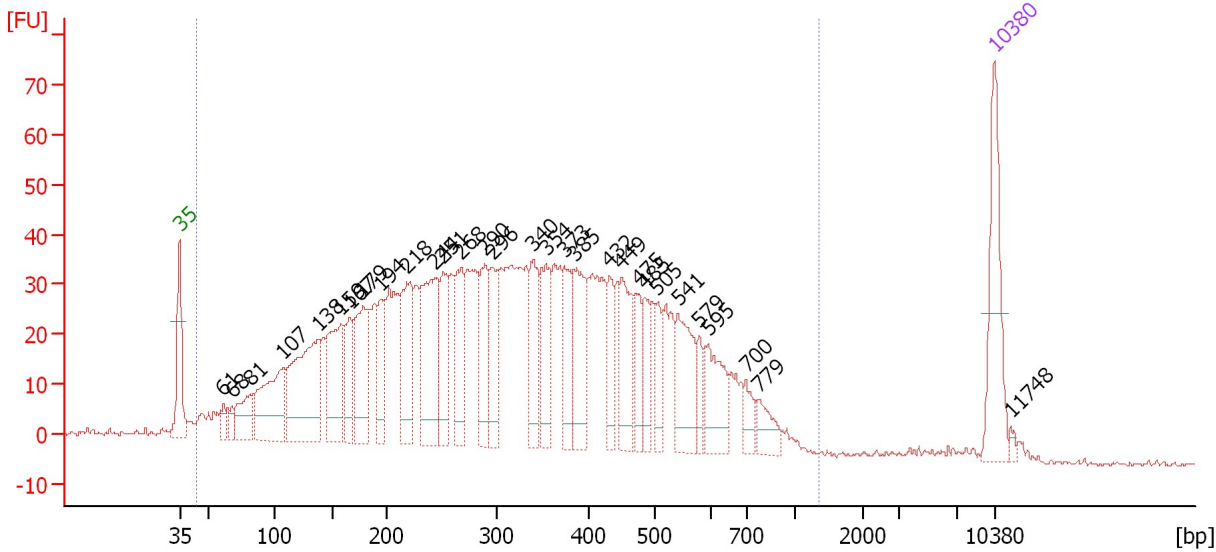
From [bp]	To [bp]	Average Size [bp]	Corr. Area	Molarity [pmol/l]	Co Conc. lor [pg/ μ l]	% of Total	Size distribution in CV [%]
200	1,000	310	4,691.5	48,525.7	9,217.85	51	24.7

Assay Class: High Sensitivity DNA Assay
 Data Path: C:\...ents and Settings\Bioanalyzer\2015-10-15\2015-10-15_003.xad

Created: 10/15/2015 3:18:46 PM
 Modified: 10/15/2015 3:58:59 PM

Electropherogram Summary Continued ...

sample 3 [HiSeq222: Soni 75 sec]



Overall Results for sample 3 : sample 3

Number of peaks found: 30 Corr. Area 1: 1,818.4
 Noise: 0.3

Peak table for sample 3 : sample 3

Peak	Size [bp]	Conc. [pg/μl]	Molarity [pmol/l]	Observations	Aligned Migration Time [s]
1	35	125.00	5,411.3	Lower Marker	43.00
2	61	16.85	416.3		46.76
3	68	16.93	377.4		47.52
4	81	53.59	1,000.0		49.05
5	107	124.61	1,770.5		51.86
6	138	190.88	2,097.0		54.90
7	159	113.74	1,086.5		56.90
8	167	50.46	459.0		57.67
9	179	112.29	952.9		58.81
10	194	58.05	453.4		60.29
11	218	102.12	710.3		62.52
12	244	140.51	872.9		64.95
13	251	63.62	384.0		65.62
14	268	74.71	422.5		67.19
15	290	72.15	377.1		69.24
16	296	67.07	342.7		69.86
17	340	62.25	277.3		73.38
18	354	66.48	284.7		74.48
19	373	66.45	269.6		76.05
20	385	70.31	276.8		76.95
21	432	40.60	142.5		79.95
22	449	68.89	232.3		80.95
23	475	33.22	105.9		82.43
24	485	34.80	108.8		82.95
25	505	30.51	91.6		84.05

Assay Class: High Sensitivity DNA Assay
 Data Path: C:\...ents and Settings\Bioanalyzer\2015-10-15\2015-10-15_003.xad

Created: 10/15/2015 3:18:46 PM
 Modified: 10/15/2015 3:58:59 PM

Electropherogram Summary Continued ...

... Peak table for sample 3 : sample 3

Peak	Size [bp]	Conc. [pg/μl]	Molarity [pmol/l]	Observations	Aligned Migration Time [s]
26	541	72.47	202.9		85.81
27	579	20.90	54.7		87.62
28	595	59.79	152.4		88.38
29	700	19.55	42.3		91.67
30	779	24.78	48.2		92.76
31	10,380	75.00	10.9	Upper Marker	113.00
32	11,748	0.00	0.0		114.33

Region table for sample 3 : sample 3

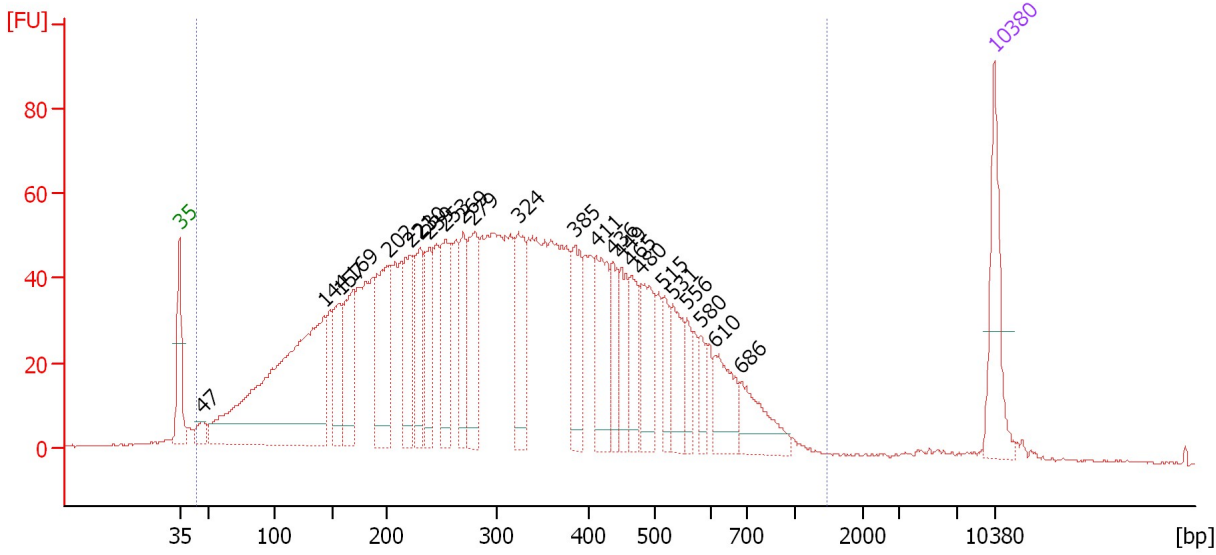
From [bp]	To [bp]	Average Size [bp]	Corr. Area	Molarity [pmol/l]	Co Conc. lor [pg/μl]	% of Total	Size distribution in CV [%]
44	1,343	341	1,818.4	20,921.7	2,960.91	98	49.0

Assay Class: High Sensitivity DNA Assay
 Data Path: C:\...ents and Settings\Bioanalyzer\2015-10-15\2015-10-15_003.xad

Created: 10/15/2015 3:18:46 PM
 Modified: 10/15/2015 3:58:59 PM

Electropherogram Summary Continued ...

sample 4 [HiSeq222: Soni 75 sec]



Overall Results for sample 4 : sample 4

Number of peaks found: 24 Corr. Area 1: 2,581.4
 Noise: 0.2

Peak table for sample 4 : sample 4

Peak	Size [bp]	Conc. [pg/μl]	Molarity [pmol/l]	Observations	Aligned Migration Time [s]
1	35	125.00	5,411.3	Lower Marker	43.00
2	47	21.28	684.8		44.98
3	144	567.42	5,988.2		55.46
4	157	87.37	842.7		56.76
5	169	115.87	1,037.5		57.92
6	202	167.36	1,257.9		61.01
7	221	102.50	703.6		62.79
8	230	97.10	639.5		63.66
9	239	84.88	538.4		64.48
10	253	113.43	678.3		65.83
11	269	72.89	409.9		67.33
12	279	115.81	628.4		68.25
13	324	98.99	462.7		72.11
14	385	88.91	350.2		76.94
15	411	103.08	380.2		78.77
16	436	49.18	170.7		80.22
17	449	60.28	203.3		80.94
18	465	54.53	177.9		81.81
19	480	78.56	248.0		82.68
20	515	37.63	110.6		84.57
21	531	60.44	172.3		85.34
22	556	27.93	76.0		86.54
23	580	23.72	61.9		87.70
24	610	60.34	149.8		88.96
25	686	63.87	141.2		91.23

Assay Class: High Sensitivity DNA Assay
Data Path: C:\...ents and Settings\Bioanalyzer\2015-10-15\2015-10-15_003.xad

Created: 10/15/2015 3:18:46 PM
Modified: 10/15/2015 3:58:59 PM

Electropherogram Summary Continued ...**... Peak table for sample 4 : sample 4**

Peak	Size [bp]	Conc. [pg/μl]	Molarity [pmol/l]	Observations	Aligned Migration Time [s]
26	10,380	75.00	10.9	Upper Marker	113.00

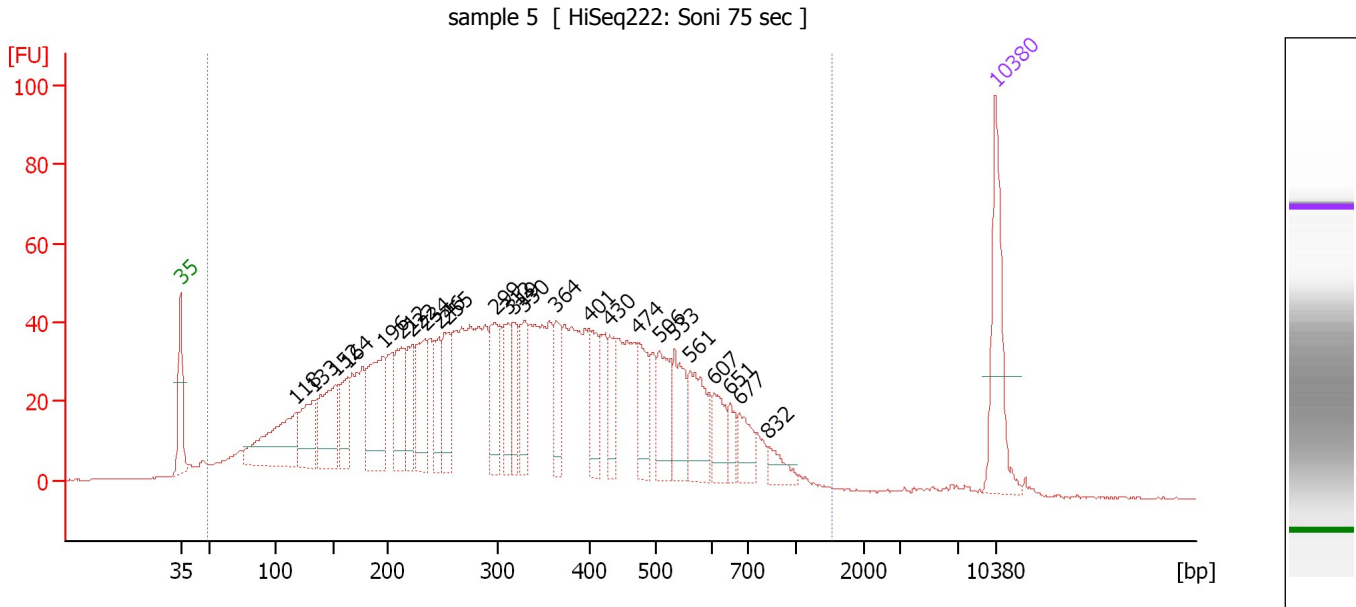
Region table for sample 4 : sample 4

From [bp]	To [bp]	Average Size [bp]	Corr. Area	Molarity [pmol/l]	Co Conc. lor [pg/μl]	% of Total	Size distribution in CV [%]
43	1,455	334	2,581.4	28,833.1	3,985.34	97	50.9

Assay Class: High Sensitivity DNA Assay
 Data Path: C:\...ents and Settings\Bioanalyzer\2015-10-15\2015-10-15_003.xad

Created: 10/15/2015 3:18:46 PM
 Modified: 10/15/2015 3:58:59 PM

Electropherogram Summary Continued ...



Overall Results for sample 5 : sample 5

Number of peaks found: 25 Corr. Area 1: 2,082.0
 Noise: 0.2

Peak table for sample 5 : sample 5

Peak	Size [bp]	Conc. [pg/μl]	Molarity [pmol/l]	Observations	Aligned Migration Time [s]
1	35	125.00	5,411.3	Lower Marker	43.00
2	118	131.65	1,693.4		52.94
3	133	72.98	832.6		54.41
4	152	104.19	1,036.1		56.31
5	164	54.24	502.4		57.38
6	196	112.88	873.8		60.45
7	212	70.96	507.6		61.96
8	222	53.19	363.4		62.89
9	234	71.62	464.2		64.01
10	246	46.20	284.1		65.18
11	255	61.85	368.0		65.96
12	299	73.95	375.2		70.05
13	312	48.01	233.3		71.13
14	319	44.11	209.8		71.66
15	330	53.10	244.1		72.54
16	364	46.33	193.0		75.27
17	401	43.24	163.5		78.19
18	430	33.51	118.1		79.85
19	474	48.46	155.0		82.34
20	506	52.97	158.7		84.09
21	533	53.24	151.4		85.41
22	561	61.62	166.4		86.77
23	607	32.28	80.5		88.87
24	651	17.39	40.5		90.19
25	677	29.38	65.8		90.97

Assay Class: High Sensitivity DNA Assay
 Data Path: C:\...ents and Settings\Bioanalyzer\2015-10-15\2015-10-15_003.xad

Created: 10/15/2015 3:18:46 PM
 Modified: 10/15/2015 3:58:59 PM

Electropherogram Summary Continued ...

... Peak table for sample 5 : sample 5

Peak	Size [bp]	Conc. [pg/μl]	Molarity [pmol/l]	Observations	Aligned Migration Time [s]
26	832	17.47	31.8		93.50
27	10,380	75.00	10.9	Upper Marker	113.00

Region table for sample 5 : sample 5

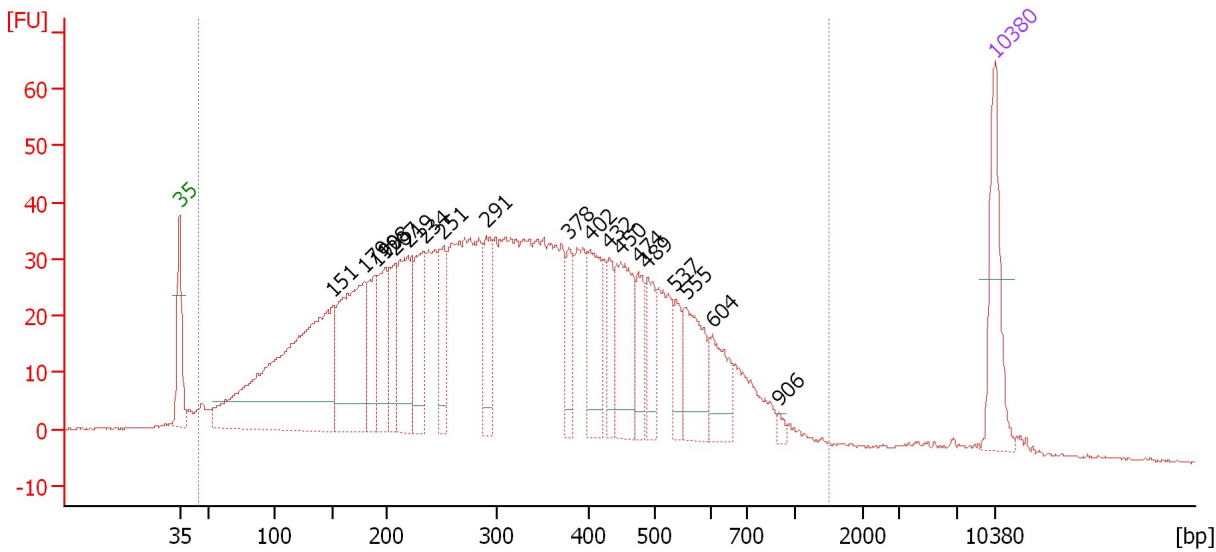
From [bp]	To [bp]	Average Size [bp]	Corr. Area	Molarity [pmol/l]	Co Conc. lor [pg/μl]	% of Total	Size distribution in CV [%]
49	1,514	353	2,082.0	18,927.5	2,793.24	97	51.2

Assay Class: High Sensitivity DNA Assay
 Data Path: C:\...ents and Settings\Bioanalyzer\2015-10-15\2015-10-15_003.xad

Created: 10/15/2015 3:18:46 PM
 Modified: 10/15/2015 3:58:59 PM

Electropherogram Summary Continued ...

sample 6 [HiSeq222: Soni 75 sec]



Overall Results for sample 6 : sample 6

Number of peaks found: 19 Corr. Area 1: 1,811.6
 Noise: 0.2

Peak table for sample 6 : sample 6

Peak	Size [bp]	Conc. [pg/μl]	Molarity [pmol/l]	Observations	Aligned Migration Time [s]
1	35	125.00	5,411.3	Lower Marker	43.00
2	151	519.07	5,199.5		56.20
3	179	240.42	2,033.9		58.86
4	190	85.29	678.5		59.95
5	198	87.20	666.7		60.68
6	207	73.55	539.4		61.47
7	219	133.15	922.3		62.61
8	234	107.20	694.0		64.03
9	251	77.48	466.8		65.66
10	291	79.03	412.1		69.31
11	378	50.51	202.5		76.40
12	402	91.08	343.4		78.27
13	432	41.36	145.2		79.95
14	450	108.88	366.8		80.98
15	474	48.09	153.7		82.36
16	489	48.53	150.4		83.20
17	537	35.17	99.2		85.61
18	555	87.12	237.7		86.50
19	604	54.19	136.0		88.76
20	906	5.53	9.2		94.53
21	10,380	75.00	10.9	Upper Marker	113.00

Region table for sample 6 : sample 6

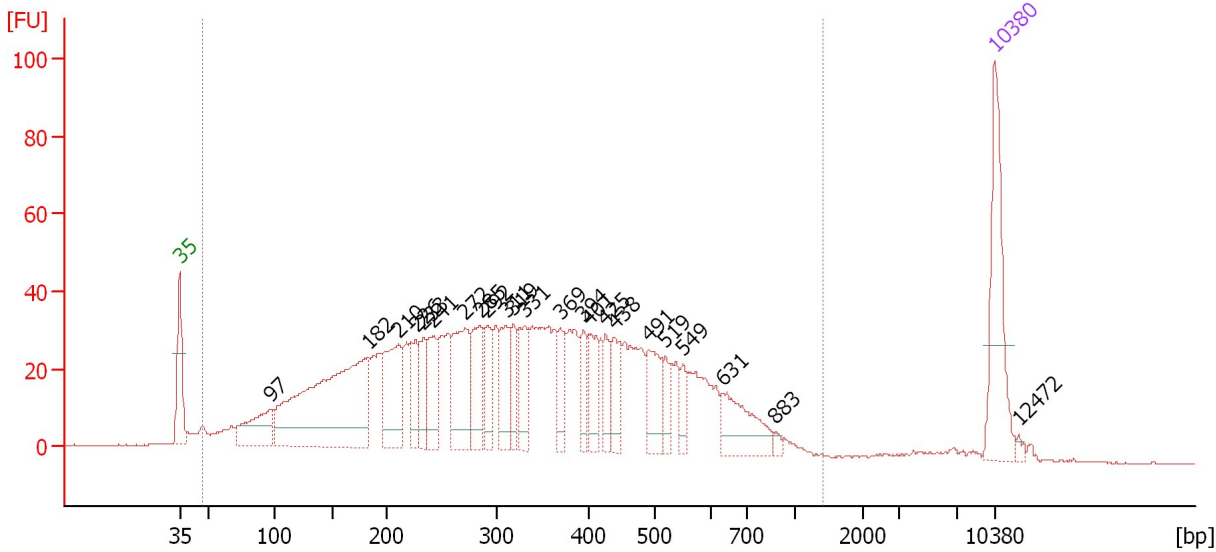
From [bp]	To [bp]	Average Size [bp]	Corr. Area	Molarity [pmol/l]	Co Conc. [pg/μl]	% of Total	Size distribution in CV [%]
45	1,483	342	1,811.6	24,689.8	3,470.18	97	52.2

Assay Class: High Sensitivity DNA Assay
 Data Path: C:\...ents and Settings\Bioanalyzer\2015-10-15\2015-10-15_003.xad

Created: 10/15/2015 3:18:46 PM
 Modified: 10/15/2015 3:58:59 PM

Electropherogram Summary Continued ...

sample 7 [HiSeq222: Soni 75 sec]



Overall Results for sample 7 : sample 7

Number of peaks found: 23 Corr. Area 1: 1,601.9
 Noise: 0.2

Peak table for sample 7 : sample 7

Peak	Size [bp]	Conc. [pg/μl]	Molarity [pmol/l]	Observations	Aligned Migration Time [s]
1	35	125.00	5,411.3	Lower Marker	43.00
2	97	68.08	1,059.6		50.90
3	182	313.25	2,605.1		59.16
4	210	91.80	662.3		61.79
5	226	41.47	278.0		63.28
6	233	36.17	235.3		63.93
7	241	52.96	332.3		64.73
8	272	87.48	487.5		67.56
9	285	60.13	319.4		68.80
10	292	38.06	197.7		69.40
11	311	46.79	228.1		71.04
12	319	33.32	158.3		71.69
13	331	47.02	215.0		72.68
14	369	31.26	128.5		75.66
15	394	26.83	103.1		77.70
16	401	37.79	142.9		78.20
17	425	25.02	89.2		79.59
18	438	35.58	122.9		80.34
19	491	45.10	139.1		83.32
20	519	18.97	55.3		84.76
21	549	17.86	49.2		86.20
22	631	55.61	133.5		89.58
23	883	4.32	7.4		94.21
24	10,380	75.00	10.9	Upper Marker	113.00
25	12,472	0.00	0.0		115.04

Assay Class: High Sensitivity DNA Assay
Data Path: C:\...ents and Settings\Bioanalyzer\2015-10-15\2015-10-15_003.xad

Created: 10/15/2015 3:18:46 PM
Modified: 10/15/2015 3:58:59 PM

Electropherogram Summary Continued ...

... Region table for sample 7 :

sample 7

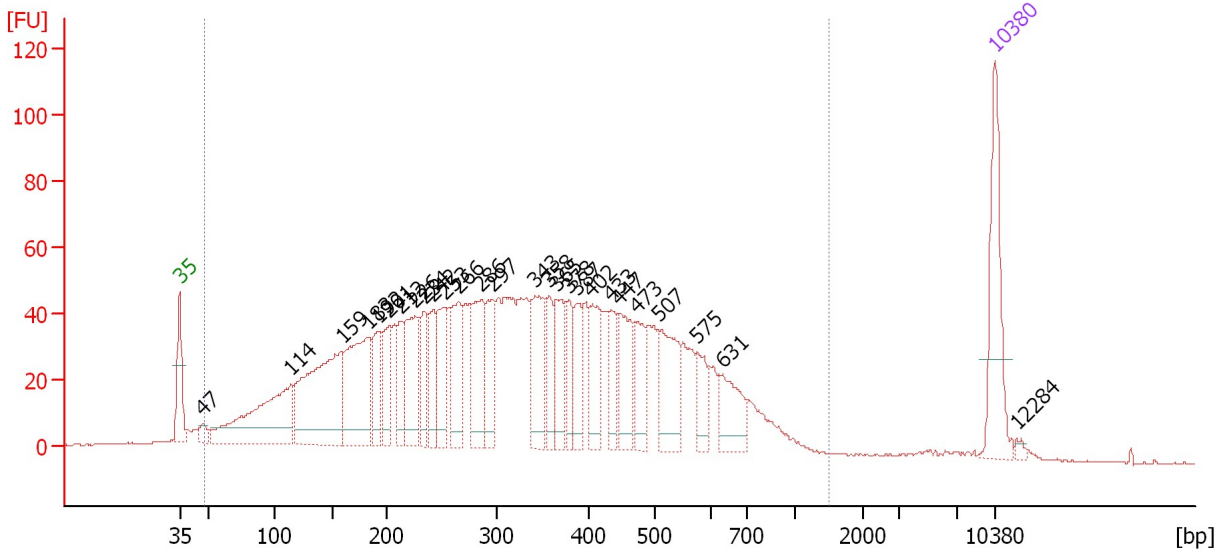
From [bp]	To [bp]	Average Size [bp]	Corr. Area	Molarity [pmol/l]	Co Conc. lor [pg/μl]	% of Total	Size distribution in CV [%]
47	1,405	346	1,601.9	13,287.4	■ 1,929.27	97	50.0

Assay Class: High Sensitivity DNA Assay
 Data Path: C:\...ents and Settings\Bioanalyzer\2015-10-15\2015-10-15_003.xad

Created: 10/15/2015 3:18:46 PM
 Modified: 10/15/2015 3:58:59 PM

Electropherogram Summary Continued ...

sample 8 [HiSeq222: Soni 75 sec]



Overall Results for sample 8 : sample 8

Number of peaks found: 27 Corr. Area 1: 2,295.0
 Noise: 0.1

Peak table for sample 8 : sample 8

Peak	Size [bp]	Conc. [pg/μl]	Molarity [pmol/l]	Observations	Aligned Migration Time [s]
1	35	125.00	5,411.3	Lower Marker	43.00
2	47	14.74	472.8		45.01
3	114	194.95	2,590.4		52.58
4	159	230.80	2,199.6		56.94
5	183	156.27	1,293.0		59.25
6	192	53.89	425.1		60.10
7	201	54.55	411.2		60.95
8	212	48.09	343.2		62.00
9	226	95.91	643.8		63.26
10	234	48.82	316.4		64.01
11	242	52.51	329.0		64.76
12	253	67.16	402.8		65.77
13	266	81.95	467.7		66.97
14	286	93.99	497.1		68.92
15	297	60.60	309.4		69.88
16	343	82.09	363.0		73.59
17	358	41.00	173.6		74.79
18	365	55.29	229.3		75.39
19	378	38.16	153.0		76.40
20	387	42.69	167.3		77.10
21	402	54.52	205.3		78.30
22	433	41.37	144.9		80.01
23	447	66.04	224.0		80.81
24	473	45.95	147.1		82.31
25	507	76.38	228.2		84.17

Assay Class: High Sensitivity DNA Assay
 Data Path: C:\...ents and Settings\Bioanalyzer\2015-10-15\2015-10-15_003.xad

Created: 10/15/2015 3:18:46 PM
 Modified: 10/15/2015 3:58:59 PM

Electropherogram Summary Continued ...

... Peak table for sample 8 : sample 8

Peak	Size [bp]	Conc. [pg/ μ l]	Molarity [pmol/l]	Observations	Aligned Migration Time [s]
26	575	33.96	89.5		87.43
27	631	47.15	113.2		89.58
28	10,380	75.00	10.9	Upper Marker	113.00
29	12,284	0.00	0.0		114.86

Region table for sample 8 : sample 8

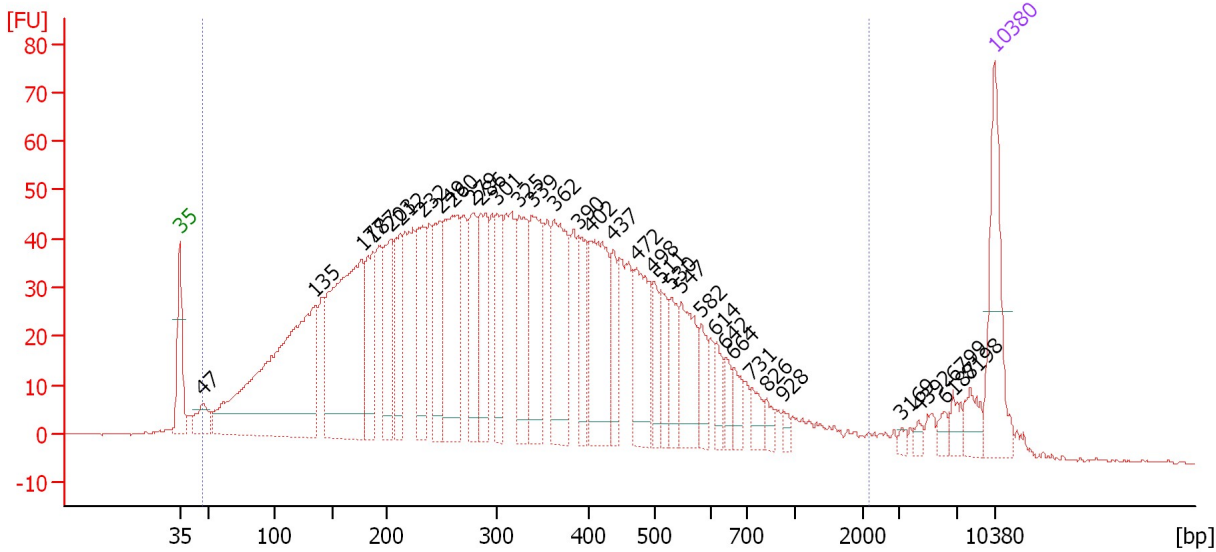
From [bp]	To [bp]	Average Size [bp]	Corr. Area	Molarity [pmol/l]	Co Conc. lor [pg/ μ l]	% of Total	Size distribution in CV [%]
48	1,493	349	2,295.0	17,831.4	2,604.77	97	50.6

Assay Class: High Sensitivity DNA Assay
 Data Path: C:\...ents and Settings\Bioanalyzer\2015-10-15\2015-10-15_003.xad

Created: 10/15/2015 3:18:46 PM
 Modified: 10/15/2015 3:58:59 PM

Electropherogram Summary Continued ...

sample 41 [HiSeq222: Soni 75 sec]



Overall Results for sample 9 : sample 41

Number of peaks found: 35 Corr. Area 1: 2,326.3
 Noise: 0.1

Peak table for sample 9 : sample 41

Peak	Size [bp]	Conc. [pg/μl]	Molarity [pmol/l]	Observations	Aligned Migration Time [s]
1	35	125.00	5,411.3	Lower Marker	43.00
2	47	31.40	1,004.7		45.02
3	135	453.37	5,080.1		54.64
4	177	324.96	2,785.3		58.64
5	187	95.86	777.4		59.60
6	203	87.06	650.4		61.12
7	212	82.20	587.5		61.98
8	232	98.33	641.9		63.85
9	249	85.60	521.0		65.42
10	260	155.31	905.8		66.43
11	279	82.87	450.4		68.21
12	286	96.68	511.5		68.91
13	301	63.89	321.4		70.28
14	325	92.20	430.3		72.15
15	339	111.08	496.0		73.32
16	362	130.51	546.1		75.14
17	390	54.60	212.1		77.37
18	402	128.05	482.6		78.28
19	437	41.79	144.9		80.25
20	472	87.01	279.4		82.23
21	498	33.62	102.3		83.69
22	511	33.80	100.2		84.35
23	530	33.73	96.4		85.26
24	547	68.40	189.6		86.07
25	582	26.58	69.2		87.79

Assay Class: High Sensitivity DNA Assay
 Data Path: C:\...ents and Settings\Bioanalyzer\2015-10-15\2015-10-15_003.xad

Created: 10/15/2015 3:18:46 PM
 Modified: 10/15/2015 3:58:59 PM

Electropherogram Summary Continued ...

... Peak table for sample 9 : sample 41

Peak	Size [bp]	Conc. [pg/ μ l]	Molarity [pmol/l]	Observations	Aligned Migration Time [s]
26	614	20.68	51.1		89.06
27	642	15.80	37.3		89.92
28	664	20.01	45.7		90.58
29	731	17.73	36.7		92.10
30	826	11.34	20.8		93.41
31	928	6.32	10.3		94.83
32	3,169	3.85	1.8		104.95
33	4,392	4.83	1.7		106.47
34	6,187	7.61	1.9		108.70
35	6,799	11.96	2.7		109.46
36	8,198	17.05	3.2		110.87
37	10,380	75.00	10.9	Upper Marker	113.00

Region table for sample 9 : sample 41

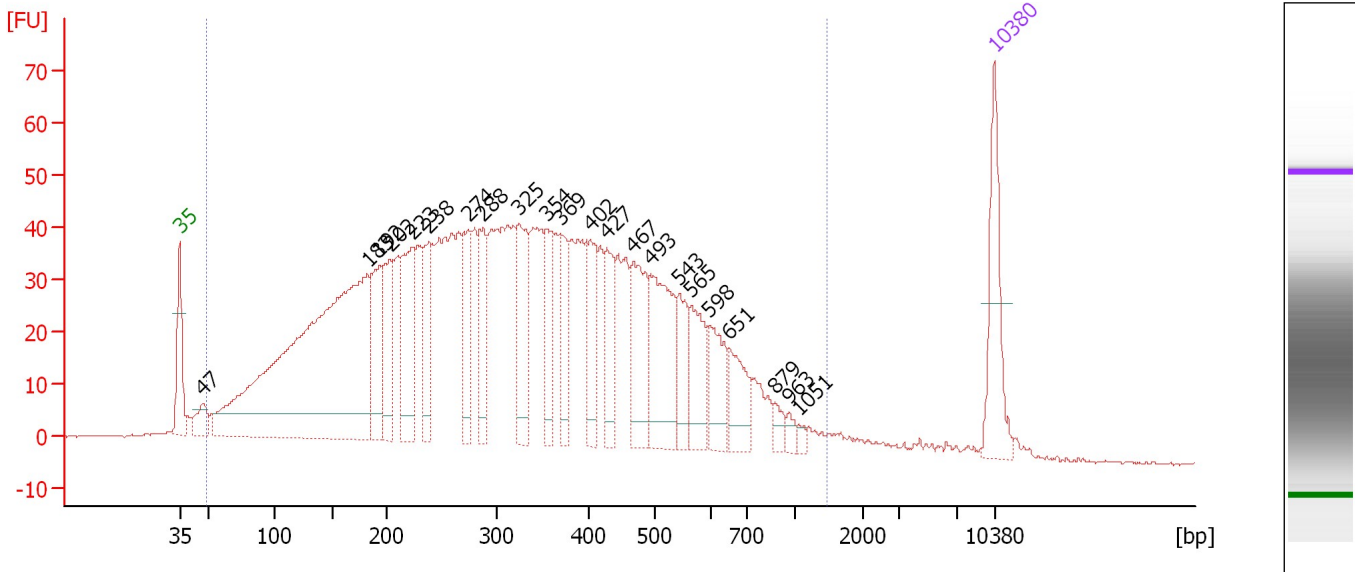
From [bp]	To [bp]	Average Size [bp]	Corr. Area	Molarity [pmol/l]	Co Conc. lor [pg/ μ l]	% of Total	Size distribution in CV [%]
47	2,129	353	2,326.3	24,999.4	3,532.72	96	65.6

Assay Class: High Sensitivity DNA Assay
 Data Path: C:\...ents and Settings\Bioanalyzer\2015-10-15\2015-10-15_003.xad

Created: 10/15/2015 3:18:46 PM
 Modified: 10/15/2015 3:58:59 PM

Electropherogram Summary Continued ...

sample 42 [HiSeq222: Soni 75 sec]



Overall Results for sample 10 : sample 42

Number of peaks found: 22 Corr. Area 1: 2,063.6
 Noise: 0.2

Peak table for sample 10 : sample 42

Peak	Size [bp]	Conc. [pg/μl]	Molarity [pmol/l]	Observations	Aligned Migration Time [s]
1	35	125.00	5,411.3	Lower Marker	43.00
2	47	34.05	1,087.8		45.04
3	183	817.08	6,778.3		59.20
4	192	98.06	772.9		60.12
5	202	93.66	701.1		61.09
6	223	122.00	828.2		63.02
7	238	77.68	493.5		64.45
8	274	81.57	451.0		67.76
9	288	74.00	389.8		69.03
10	325	108.58	505.9		72.19
11	354	68.73	294.2		74.48
12	369	64.66	265.3		75.71
13	402	70.38	265.5		78.25
14	427	69.64	247.2		79.68
15	467	101.92	330.4		81.97
16	493	132.46	406.7		83.45
17	543	52.49	146.5		85.90
18	565	67.71	181.5		86.97
19	598	58.54	148.4		88.55
20	651	52.31	121.8		90.18
21	879	12.77	22.0		94.15
22	963	8.71	13.7		95.32
23	1,051	5.50	7.9		96.14
24	10,380	75.00	10.9	Upper Marker	113.00

Assay Class: High Sensitivity DNA Assay
Data Path: C:\...ents and Settings\Bioanalyzer\2015-10-15\2015-10-15_003.xad

Created: 10/15/2015 3:18:46 PM
Modified: 10/15/2015 3:58:59 PM

Electropherogram Summary Continued ...

... Region table for sample 10 : sample 42

From [bp]	To [bp]	Average Size [bp]	Corr. Area	Molarity [pmol/l]	Co Conc. lor [pg/μl]	% of Total	Size distribution in CV [%]
49	1,464	348	2,063.6	25,691.7	3,713.95	97	53.4

Assay Class: High Sensitivity DNA Assay
Data Path: C:\...ents and Settings\Bioanalyzer\2015-10-15\2015-10-15_003.xad

Created: 10/15/2015 3:18:46 PM
Modified: 10/15/2015 3:58:59 PM

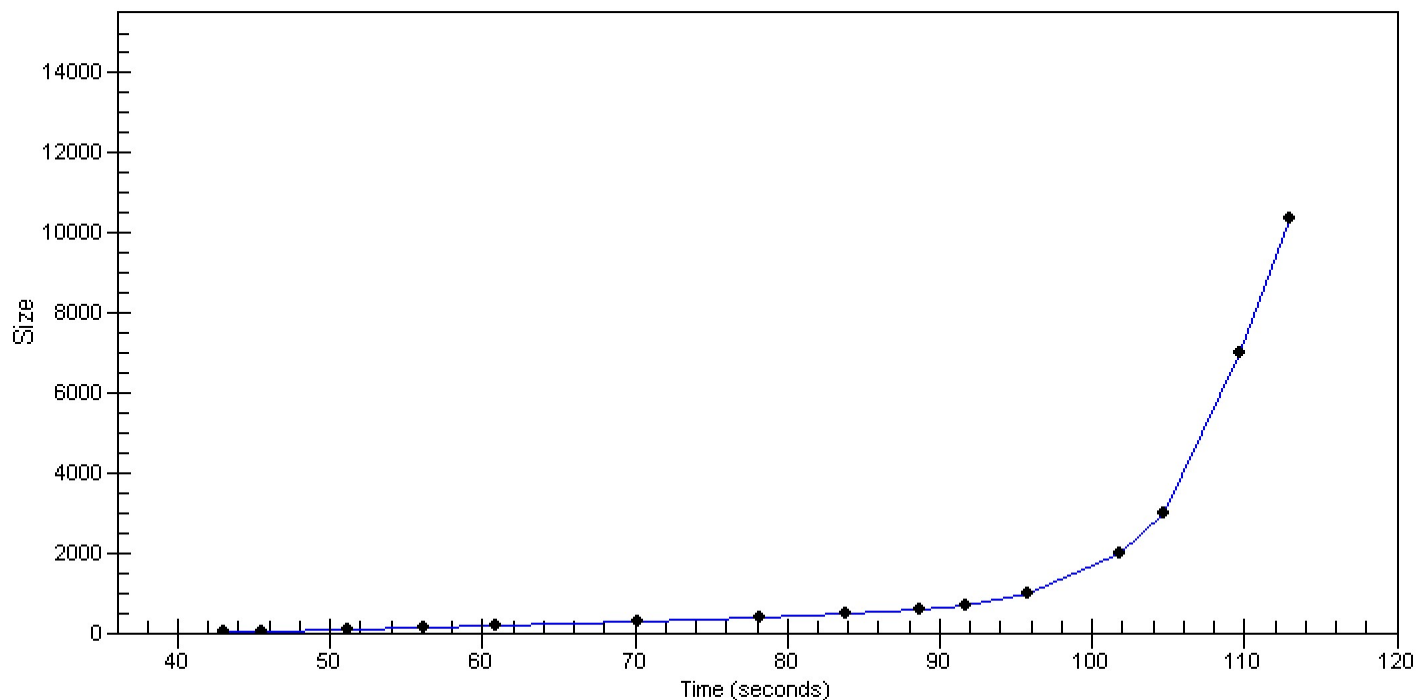
Gel Image

Assay Class: High Sensitivity DNA Assay
Data Path: C:\...ents and Settings\Bioanalyzer\2015-10-15\2015-10-15_003.xad

Created: 10/15/2015 3:18:46 PM
Modified: 10/15/2015 3:58:59 PM

Curves

Standard Curve



Assay Class: High Sensitivity DNA Assay
Data Path: C:\...ents and Settings\Bioanalyzer\2015-10-15\2015-10-15_003.xad

Created: 10/15/2015 3:18:46 PM
Modified: 10/15/2015 3:58:59 PM

Invalid Samples

Sample 11 has not been run, no results available.

Assay Class: High Sensitivity DNA Assay
 Data Path: C:\...ents and Settings\Bioanalyzer\2015-10-15\2015-10-15_003.xad

Created: 10/15/2015 3:18:46 PM
 Modified: 10/15/2015 3:58:59 PM

Run Logbook

Description	Number	Source	Category	Sub Category	Time	Time Zone	User	Host
Run ended on port 1 (Number of wells acquired: 11)		Instrument	Run		10/15/2015 3:57:11 PM	(GMT --07:00) Pacific Standard Time	UC Davis	D8XSMGH1
Run started on port 1 (File: C:\Documents and Settings\Bioanalyzer\2015-10-15\2015-10-15_003.xad)		Instrument	Run		10/15/2015 3:18:51 PM	(GMT --07:00) Pacific Standard Time	UC Davis	D8XSMGH1
Product Number : G2938B		Instrument	Run		10/15/2015 3:18:51 PM	(GMT --07:00) Pacific Standard Time	UC Davis	D8XSMGH1
Name :		Instrument	Run		10/15/2015 3:18:51 PM	(GMT --07:00) Pacific Standard Time	UC Davis	D8XSMGH1
Vendor : Agilent Technologies		Instrument	Run		10/15/2015 3:18:51 PM	(GMT --07:00) Pacific Standard Time	UC Davis	D8XSMGH1
Serial# : DE13701086		Instrument	Run		10/15/2015 3:18:51 PM	(GMT --07:00) Pacific Standard Time	UC Davis	D8XSMGH1
Firmware : C.01.069		Instrument	Run		10/15/2015 3:18:51 PM	(GMT --07:00) Pacific Standard Time	UC Davis	D8XSMGH1
Cartridge : Electrode		Instrument	Run		10/15/2015 3:18:51 PM	(GMT --07:00) Pacific Standard Time	UC Davis	D8XSMGH1