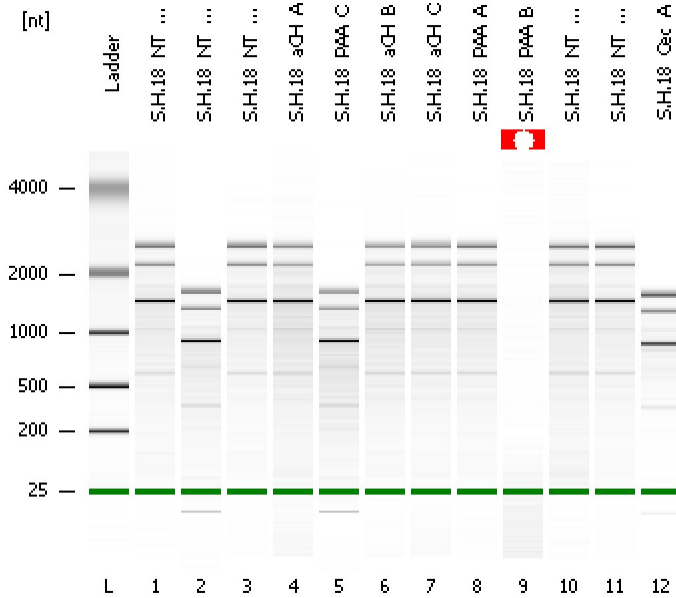


Assay Class: Prokaryote Total RNA Nano
Data Path: C:\...ents and Settings\Bioanalyzer\2015-10-16\2015-10-16_001.xad

Created: 10/16/2015 11:43:35 AM
Modified: 10/16/2015 12:07:26 PM

Electrophoresis File Run Summary



Instrument Information:

Instrument Name: DE13701086 Firmware: C.01.069
Serial#: DE13701086 Type: G2938B

Assay Information:

Assay Origin Path: C:\Program Files\Agilent\2100 bioanalyzer\2100 expert\assays\RNA\Prokaryote Total RNA Nano Series II.xsy
Assay Class: Prokaryote Total RNA Nano
Version: 2.5
Assay Comments: Total RNA Analysis ng sensitivity (Prokaryote)
© Copyright 2003 - 2009 Agilent Technologies, Inc.

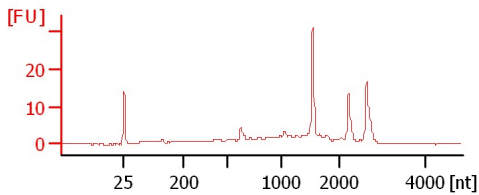
Chip Information:

Chip Lot #:
Reagent Kit Lot #:
Chip Comments:

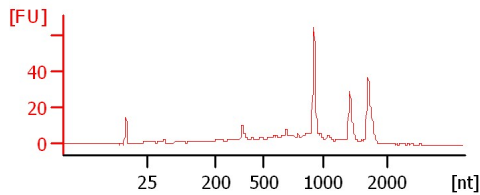
S.H.18_NT_A_90min.

S.H.18_NT_B_90min.

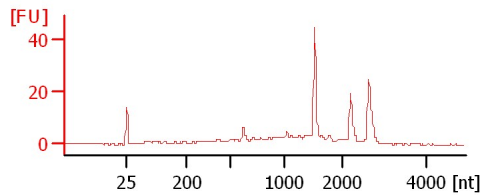
S.H.18_NT_C_90min.



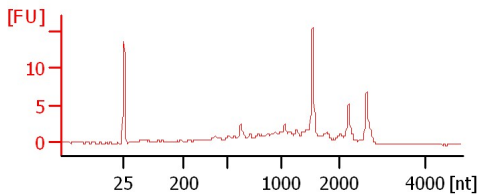
S.H.18_aCH_A



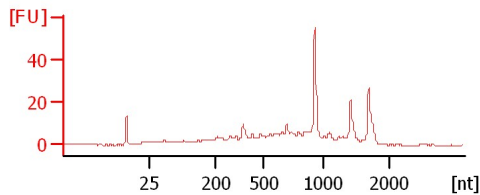
S.H.18_PAA_C



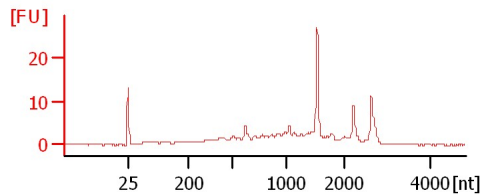
S.H.18_aCH_B



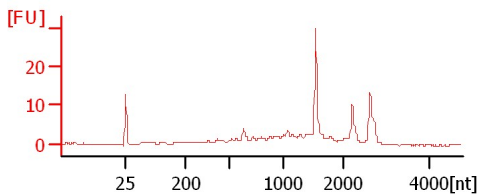
S.H.18_aCH_C



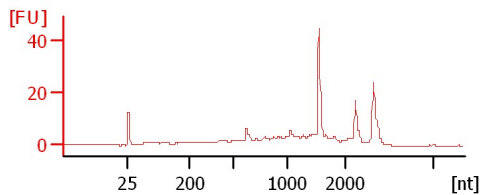
S.H.18_PAA_A



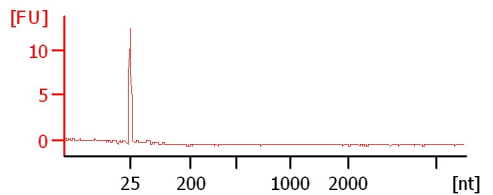
S.H.18_PAA_B



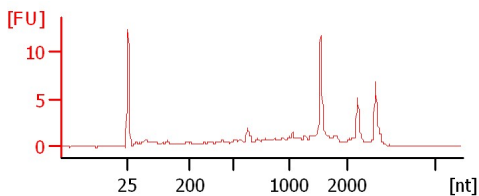
S.H.18_NT_B_8sec.



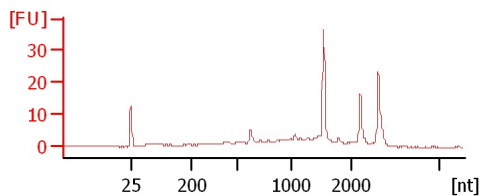
S.H.18_NT_C_8sec.



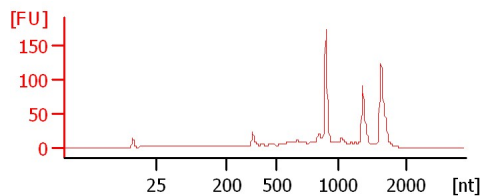
S.H.18_Cec_A



S.H.18_NT_A_8sec.



S.H.18_PAA_B



S.H.18_Cec_B

Assay Class: Prokaryote Total RNA Nano
Data Path: C:\...ents and Settings\Bioanalyzer\2015-10-16\2015-10-16_001.xad

Created: 10/16/2015 11:43:35 AM
Modified: 10/16/2015 12:07:26 PM

Electrophoresis File Run Summary (Chip Summary)

Sample Name	Sample Comment	Status	Result Label	Result Color
S.H.18_NT_A_90min.		✓		
S.H.18_NT_B_90min.		✓		
S.H.18_NT_C_90min.		✓		
S.H.18_aCH_A		✓		
S.H.18_PAA_C		✓		
S.H.18_aCH_B		✓		
S.H.18_aCH_C		✓		
S.H.18_PAA_A		✓		
S.H.18_PAA_B		✓		
S.H.18_NT_B_8sec.		✓		
S.H.18_NT_C_8sec.		✓		
S.H.18_Cec_A		✓		
Ladder		✓		

Chip Lot #**Reagent Kit Lot #****Chip Comments :**

Assay Class: Prokaryote Total RNA Nano
Data Path: C:\...ents and Settings\Bioanalyzer\2015-10-16\2015-10-16_001.xad

Created: 10/16/2015 11:43:35 AM
Modified: 10/16/2015 12:07:26 PM

Electrophoresis Assay Details

General Analysis Settings

Number of Available Sample and Ladder Wells (Max.) : 13
Minimum Visible Range [s] : 17
Maximum Visible Range [s] : 70
Start Analysis Time Range [s] : 19
End Analysis Time Range [s] : 69
Ladder Concentration [ng/μl] : 150
Lower Marker Concentration [ng/μl] : 0
Upper Marker Concentration [ng/μl] : 0
Used Lower Marker for Quantitation
Standard Curve Fit is Logarithmic
Show Data Aligned to Lower Marker

Integrator Settings

Integration Start Time [s] : 19
Integration End Time [s] : 69
Slope Threshold : 0.6
Height Threshold [FU] : 0.5
Area Threshold : 0.2
Width Threshold [s] : 0.5
Baseline Plateau [s] : 6

Filter Settings

Filter Width [s] : 0.5
Polynomial Order : 4

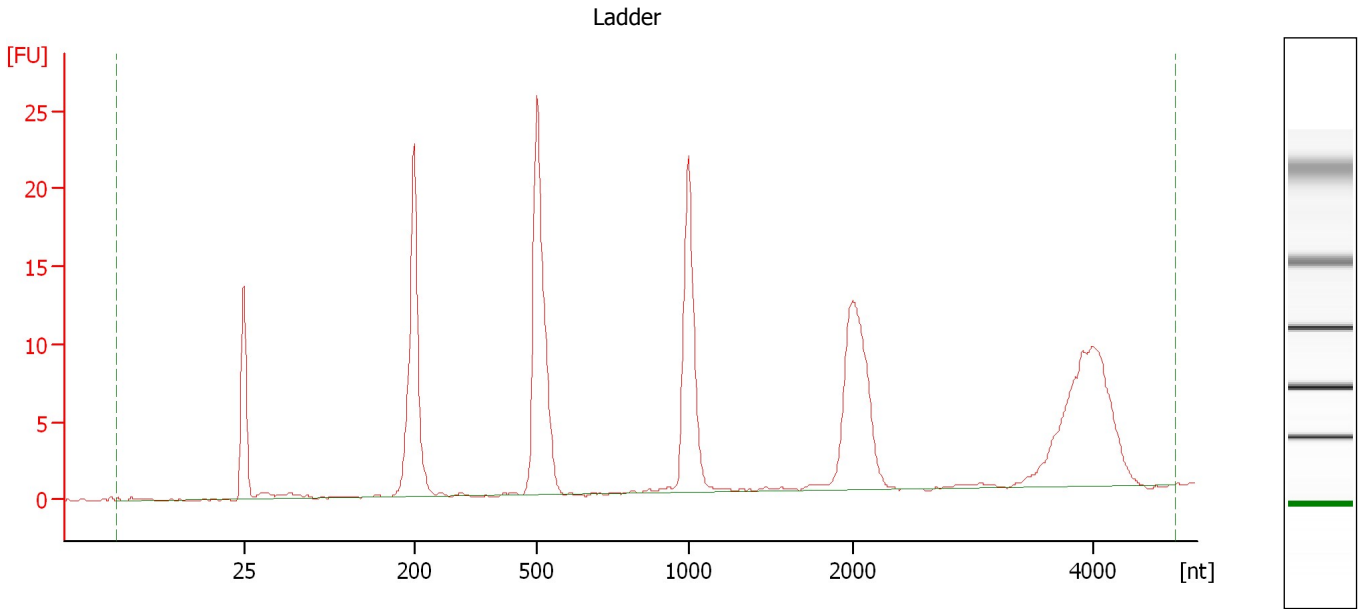
Ladder

Ladder Peak	Size
1	25
2	200
3	500
4	1000
5	2000
6	4000

Assay Class: Prokaryote Total RNA Nano
Data Path: C:\...ents and Settings\Bioanalyzer\2015-10-16\2015-10-16_001.xad

Created: 10/16/2015 11:43:35 AM
Modified: 10/16/2015 12:07:26 PM

Electropherogram Summary



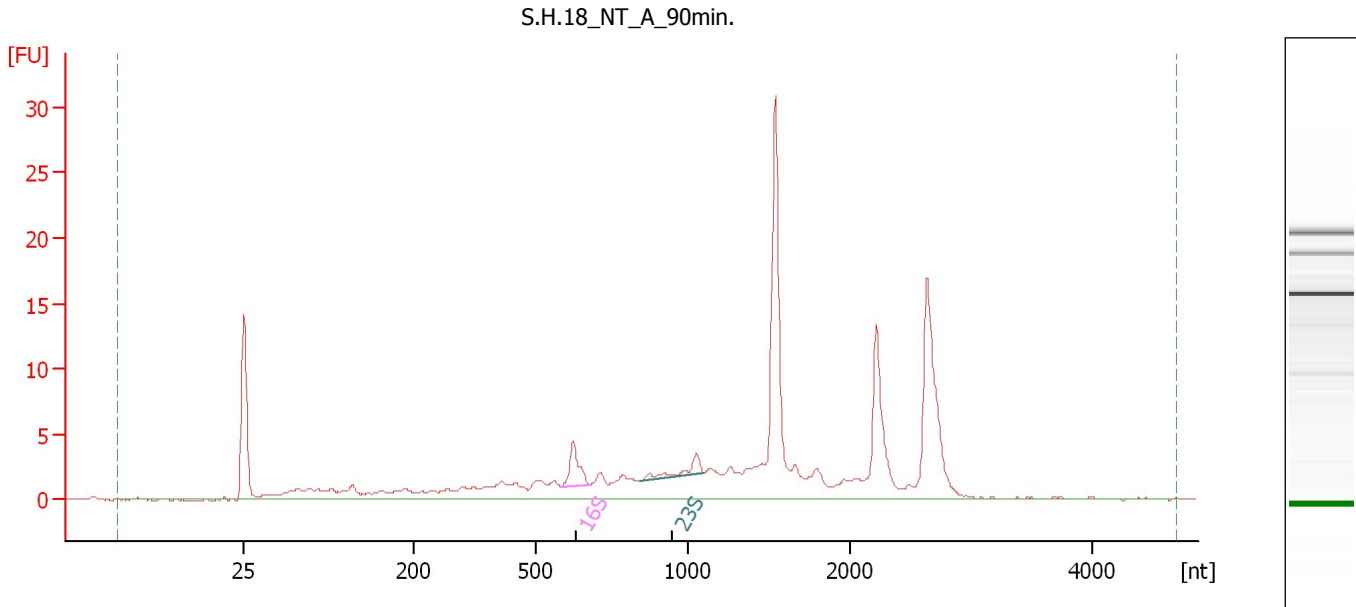
Overall Results for Ladder

RNA Area: 163.8 RNA Concentration: 150 ng/μl

Assay Class: Prokaryote Total RNA Nano
Data Path: C:\...ents and Settings\Bioanalyzer\2015-10-16\2015-10-16_001.xad

Created: 10/16/2015 11:43:35 AM
Modified: 10/16/2015 12:07:26 PM

Electropherogram Summary Continued ...



Overall Results for sample 1 : S.H.18 NT A 90min.

RNA Area: 142.5 rRNA Ratio [23s / 16s]: 0.6
RNA Concentration: 130 ng/μl RNA Integrity Number (RIN): 4.5 (B.02.08)

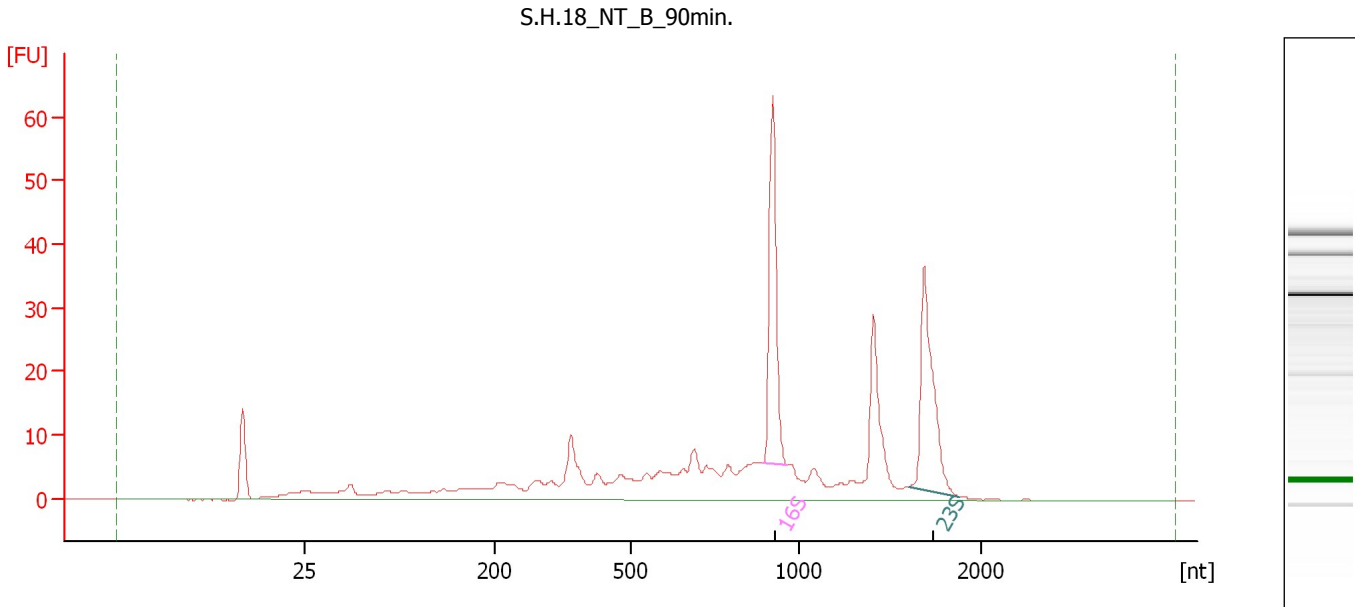
Fragment table for sample 1 : S.H.18 NT A 90min.

Name	Start Size [nt]	End Size [nt]	Area	% of total Area
16S	583	674	4.1	2.8
23S	840	1,103	2.6	1.8

Assay Class: Prokaryote Total RNA Nano
Data Path: C:\...ents and Settings\Bioanalyzer\2015-10-16\2015-10-16_001.xad

Created: 10/16/2015 11:43:35 AM
Modified: 10/16/2015 12:07:26 PM

Electropherogram Summary Continued ...



Overall Results for sample 2 : S.H.18 NT B 90min.

RNA Area: 311.5 rRNA Ratio [23s / 16s]: 0.9
RNA Concentration: 285 ng/μl RNA Integrity Number (RIN): 6.6 (B.02.08)

Fragment table for sample 2 : S.H.18 NT B 90min.

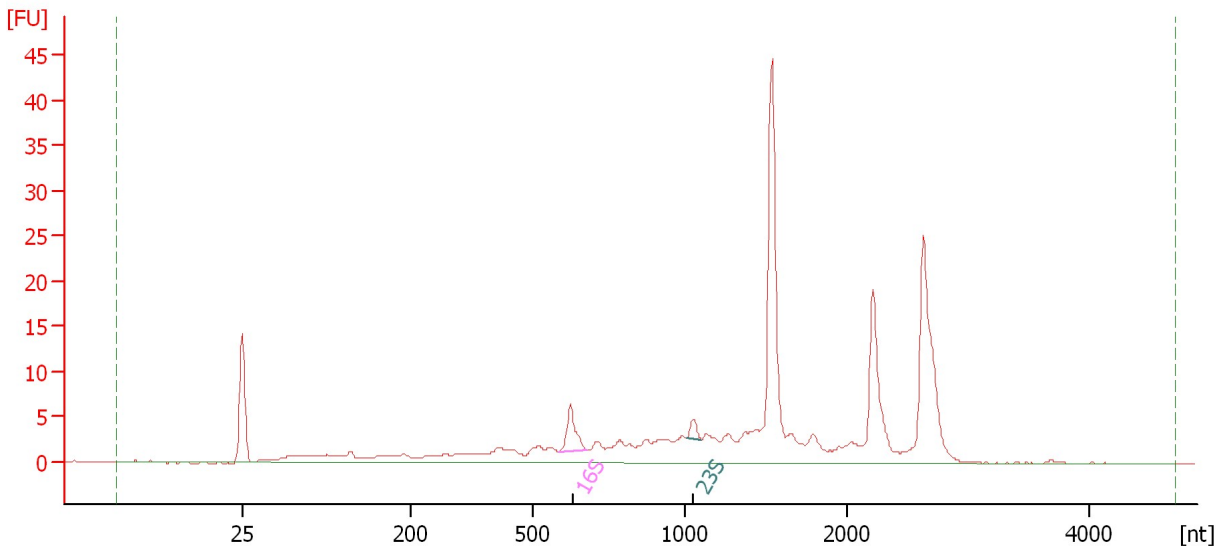
Name	Start Size [nt]	End Size [nt]	Area	% of total Area
16S	893	963	41.7	13.4
23S	1,607	1,878	39.5	12.7

Assay Class: Prokaryote Total RNA Nano
Data Path: C:\...ents and Settings\Bioanalyzer\2015-10-16\2015-10-16_001.xad

Created: 10/16/2015 11:43:35 AM
Modified: 10/16/2015 12:07:26 PM

Electropherogram Summary Continued ...

S.H.18_NT_C_90min.



Overall Results for sample 3 : S.H.18 NT C 90min.

RNA Area: 191.7 rRNA Ratio [23s / 16s]: 0.3
RNA Concentration: 176 ng/μl RNA Integrity Number (RIN): 4.3 (B.02.08)

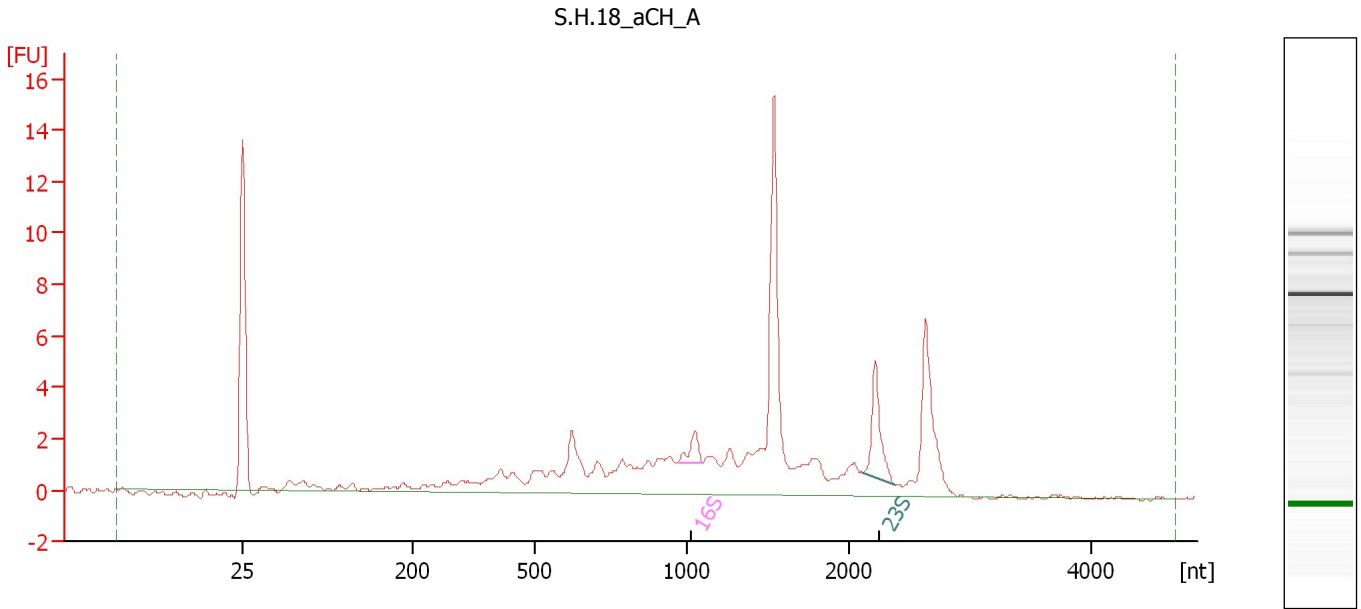
Fragment table for sample 3 : S.H.18 NT C 90min.

Name	Start Size [nt]	End Size [nt]	Area	% of total Area
16S	581	677	5.7	3.0
23S	1,010	1,102	1.5	0.8

Assay Class: Prokaryote Total RNA Nano
Data Path: C:\...ents and Settings\Bioanalyzer\2015-10-16\2015-10-16_001.xad

Created: 10/16/2015 11:43:35 AM
Modified: 10/16/2015 12:07:26 PM

Electropherogram Summary Continued ...



Overall Results for sample 4 : S.H.18 aCH A

RNA Area: 73.5 rRNA Ratio [23s / 16s]: 2.9
RNA Concentration: 67 ng/μl RNA Integrity Number (RIN): 3 (B.02.08)

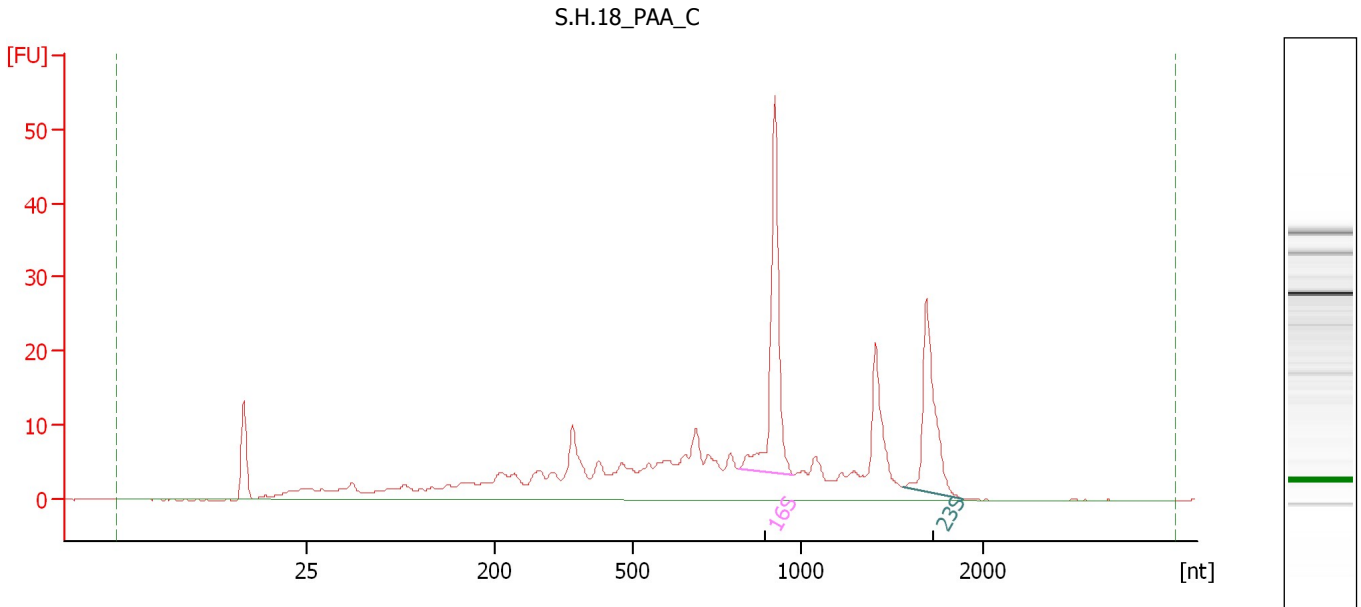
Fragment table for sample 4 : S.H.18 aCH A

Name	Start Size [nt]	End Size [nt]	Area	% of total Area
16S	971	1,097	1.3	1.7
23S	2,116	2,373	3.7	5.0

Assay Class: Prokaryote Total RNA Nano
Data Path: C:\...ents and Settings\Bioanalyzer\2015-10-16\2015-10-16_001.xad

Created: 10/16/2015 11:43:35 AM
Modified: 10/16/2015 12:07:26 PM

Electropherogram Summary Continued ...



Overall Results for sample 5 : S.H.18 PAA C

RNA Area: 322.4 rRNA Ratio [23s / 16s]: 0.6
RNA Concentration: 295 ng/μl RNA Integrity Number (RIN): 6.4 (B.02.08)

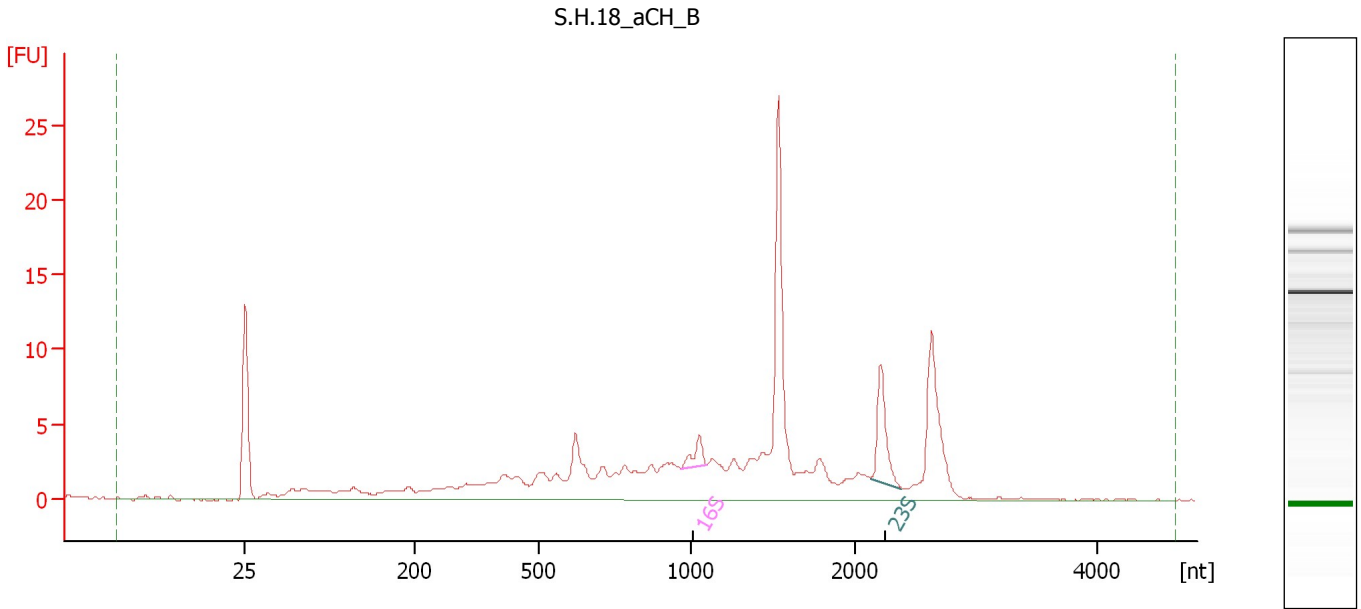
Fragment table for sample 5 : S.H.18 PAA C

Name	Start Size [nt]	End Size [nt]	Area	% of total Area
16S	815	973	43.8	13.6
23S	1,560	1,883	28.1	8.7

Assay Class: Prokaryote Total RNA Nano
Data Path: C:\...ents and Settings\Bioanalyzer\2015-10-16\2015-10-16_001.xad

Created: 10/16/2015 11:43:35 AM
Modified: 10/16/2015 12:07:26 PM

Electropherogram Summary Continued ...



Overall Results for sample 6 : S.H.18 aCH B

RNA Area: 138.7 rRNA Ratio [23s / 16s]: 2.9
RNA Concentration: 127 ng/μl RNA Integrity Number (RIN): 2.9 (B.02.08)

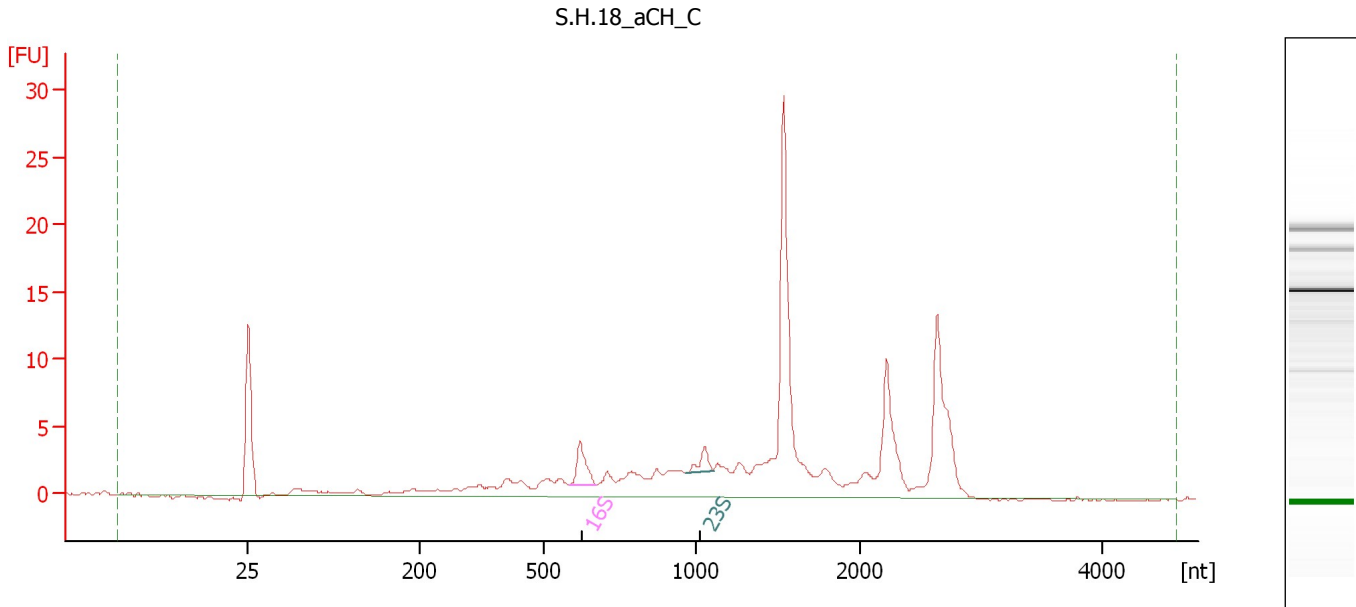
Fragment table for sample 6 : S.H.18 aCH B

Name	Start Size [nt]	End Size [nt]	Area	% of total Area
16S	969	1,099	2.2	1.6
23S	2,131	2,387	6.3	4.6

Assay Class: Prokaryote Total RNA Nano
Data Path: C:\...ents and Settings\Bioanalyzer\2015-10-16\2015-10-16_001.xad

Created: 10/16/2015 11:43:35 AM
Modified: 10/16/2015 12:07:26 PM

Electropherogram Summary Continued ...



Overall Results for sample 7 : S.H.18 aCH C

RNA Area: 126.9 rRNA Ratio [23s / 16s]: 0.5
RNA Concentration: 116 ng/μl RNA Integrity Number (RIN): 4.2 (B.02.08)

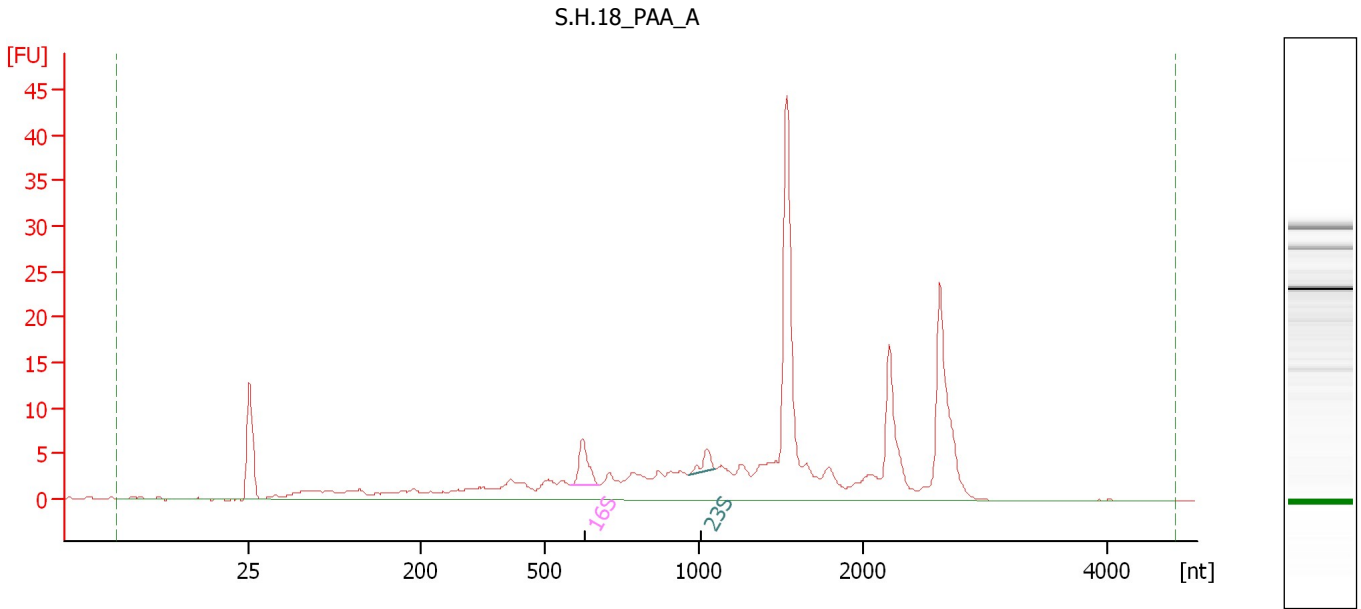
Fragment table for sample 7 : S.H.18 aCH C

Name	Start Size [nt]	End Size [nt]	Area	% of total Area
16S	585	676	3.8	3.0
23S	970	1,107	1.9	1.5

Assay Class: Prokaryote Total RNA Nano
Data Path: C:\...ents and Settings\Bioanalyzer\2015-10-16\2015-10-16_001.xad

Created: 10/16/2015 11:43:35 AM
Modified: 10/16/2015 12:07:26 PM

Electropherogram Summary Continued ...



Overall Results for sample 8 : S.H.18 PAA A

RNA Area: 208.4 rRNA Ratio [23s / 16s]: 0.4
RNA Concentration: 191 ng/μl RNA Integrity Number (RIN): 4 (B.02.08)

Fragment table for sample 8 : S.H.18 PAA A

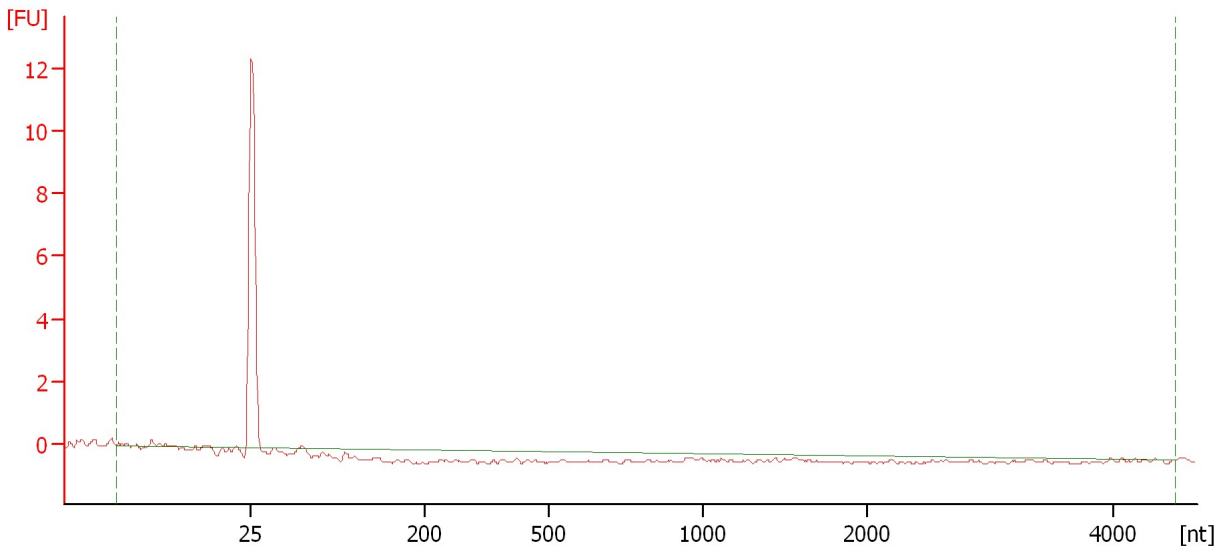
Name	Start Size [nt]	End Size [nt]	Area	% of total Area
16S	584	675	5.7	2.8
23S	968	1,102	2.4	1.2

Assay Class: Prokaryote Total RNA Nano
Data Path: C:\...ents and Settings\Bioanalyzer\2015-10-16\2015-10-16_001.xad

Created: 10/16/2015 11:43:35 AM
Modified: 10/16/2015 12:07:26 PM

Electropherogram Summary Continued ...

S.H.18_PAA_B



Overall Results for sample 9 : S.H.18 PAA B

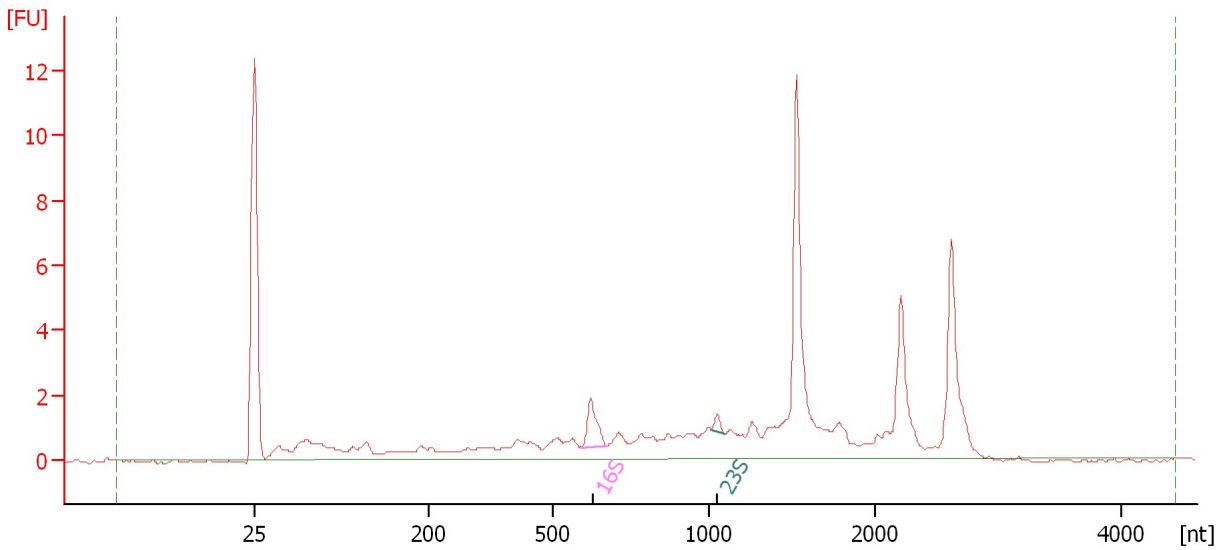
RNA Area:	0.8	rRNA Ratio [23s / 16s]:	0.0
RNA Concentration:	1 ng/μl	RNA Integrity Number (RIN):	N/A (B.02.08)

Assay Class: Prokaryote Total RNA Nano
Data Path: C:\...ents and Settings\Bioanalyzer\2015-10-16\2015-10-16_001.xad

Created: 10/16/2015 11:43:35 AM
Modified: 10/16/2015 12:07:26 PM

Electropherogram Summary Continued ...

S.H.18_NT_B_8sec.



Overall Results for sample 10 : S.H.18 NT B 8sec.

RNA Area: 61.2 rRNA Ratio [23s / 16s]: 0.2
RNA Concentration: 56 ng/μl RNA Integrity Number (RIN): 4.3 (B.02.08)

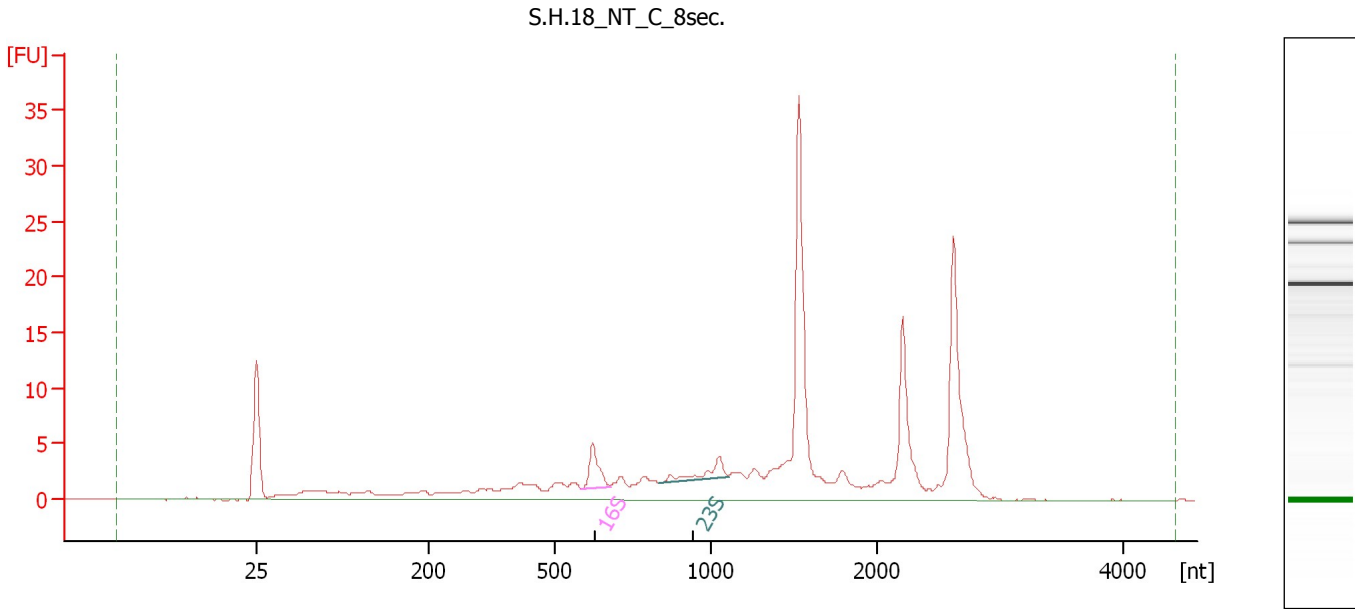
Fragment table for sample 10 : S.H.18 NT B 8sec.

Name	Start Size [nt]	End Size [nt]	Area	% of total Area
16S	591	671	1.8	2.9
23S	1,018	1,101	0.3	0.6

Assay Class: Prokaryote Total RNA Nano
Data Path: C:\...ents and Settings\Bioanalyzer\2015-10-16\2015-10-16_001.xad

Created: 10/16/2015 11:43:35 AM
Modified: 10/16/2015 12:07:26 PM

Electropherogram Summary Continued ...



Overall Results for sample 11 : S.H.18 NT C 8sec.

RNA Area: 157.5 rRNA Ratio [23s / 16s]: 0.7
RNA Concentration: 144 ng/μl RNA Integrity Number (RIN): 4.6 (B.02.08)

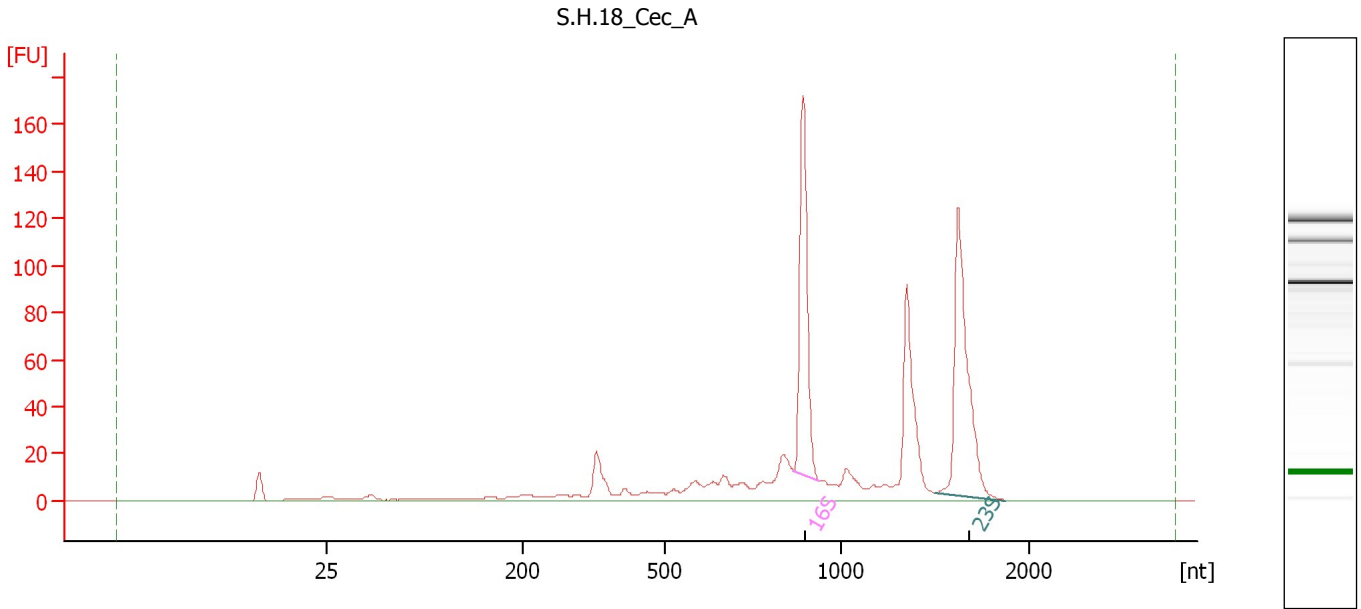
Fragment table for sample 11 : S.H.18 NT C 8sec.

Name	Start Size [nt]	End Size [nt]	Area	% of total Area
16S	586	679	4.6	2.9
23S	838	1,108	3.2	2.1

Assay Class: Prokaryote Total RNA Nano
Data Path: C:\...ents and Settings\Bioanalyzer\2015-10-16\2015-10-16_001.xad

Created: 10/16/2015 11:43:35 AM
Modified: 10/16/2015 12:07:26 PM

Electropherogram Summary Continued ...



Overall Results for sample 12 : S.H.18 Cec A

RNA Area: 642.4 rRNA Ratio [23s / 16s]: 1.2
RNA Concentration: 588 ng/μl RNA Integrity Number (RIN): 7.7 (B.02.08)

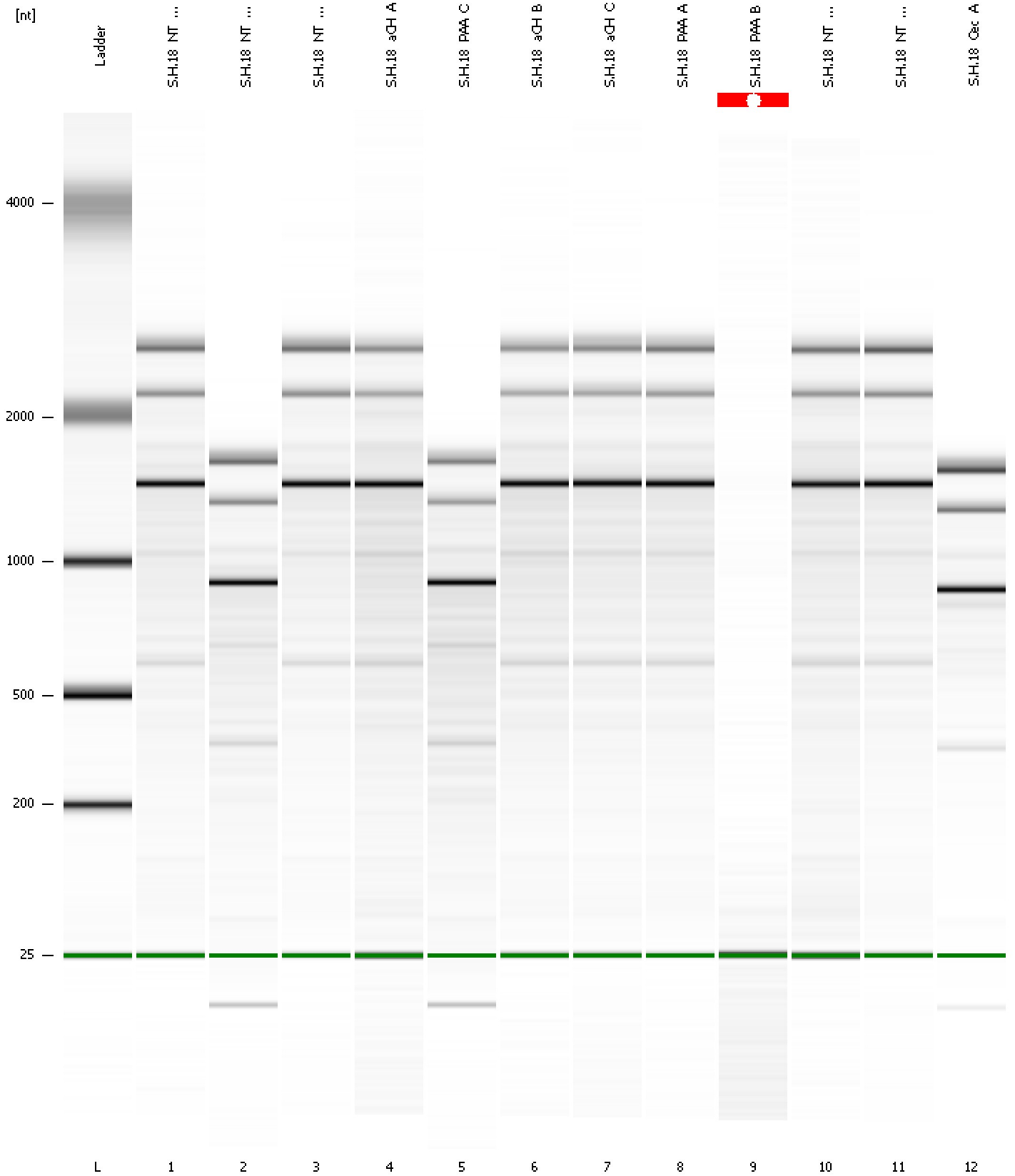
Fragment table for sample 12 : S.H.18 Cec A

Name	Start Size [nt]	End Size [nt]	Area	% of total Area
16S	866	939	119.8	18.6
23S	1,505	1,874	140.0	21.8

Assay Class: Prokaryote Total RNA Nano
Data Path: C:\...ents and Settings\Bioanalyzer\2015-10-16\2015-10-16_001.xad

Created: 10/16/2015 11:43:35 AM
Modified: 10/16/2015 12:07:26 PM

Gel Image

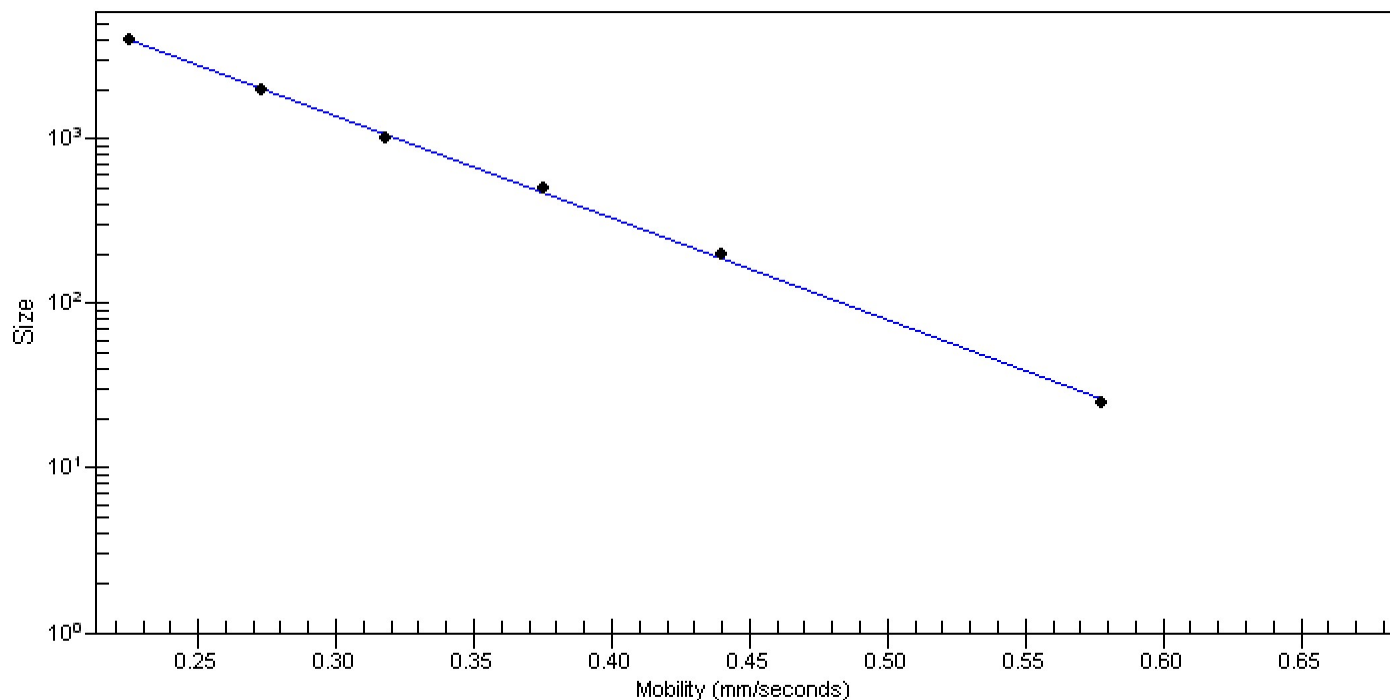


Assay Class: Prokaryote Total RNA Nano
Data Path: C:\...ents and Settings\Bioanalyzer\2015-10-16\2015-10-16_001.xad

Created: 10/16/2015 11:43:35 AM
Modified: 10/16/2015 12:07:26 PM

Curves

Standard Curve



Assay Class: Prokaryote Total RNA Nano
 Data Path: C:\...ents and Settings\Bioanalyzer\2015-10-16\2015-10-16_001.xad

Created: 10/16/2015 11:43:35 AM
 Modified: 10/16/2015 12:07:26 PM

Run Logbook

Description	Number	Source	Category	Sub Category	Time	Time Zone	User	Host
Run ended on port 1 (Number of wells acquired: 13)		Instrument	Run		10/16/2015 12:07:25 PM	(GMT --07:00) Pacific Standard Time	UC Davis	D8XSMGH1
Run started on port 1 (File: C:\Documents and Settings\Bioanalyzer\2015-10-16\2015-10-16_001.xad)		Instrument	Run		10/16/2015 11:43:40 AM	(GMT --07:00) Pacific Standard Time	UC Davis	D8XSMGH1
Product Number : G2938B		Instrument	Run		10/16/2015 11:43:40 AM	(GMT --07:00) Pacific Standard Time	UC Davis	D8XSMGH1
Name :		Instrument	Run		10/16/2015 11:43:40 AM	(GMT --07:00) Pacific Standard Time	UC Davis	D8XSMGH1
Vendor : Agilent Technologies		Instrument	Run		10/16/2015 11:43:40 AM	(GMT --07:00) Pacific Standard Time	UC Davis	D8XSMGH1
Serial# : DE13701086		Instrument	Run		10/16/2015 11:43:40 AM	(GMT --07:00) Pacific Standard Time	UC Davis	D8XSMGH1
Firmware : C.01.069		Instrument	Run		10/16/2015 11:43:40 AM	(GMT --07:00) Pacific Standard Time	UC Davis	D8XSMGH1
Cartridge : Electrode		Instrument	Run		10/16/2015 11:43:40 AM	(GMT --07:00) Pacific Standard Time	UC Davis	D8XSMGH1