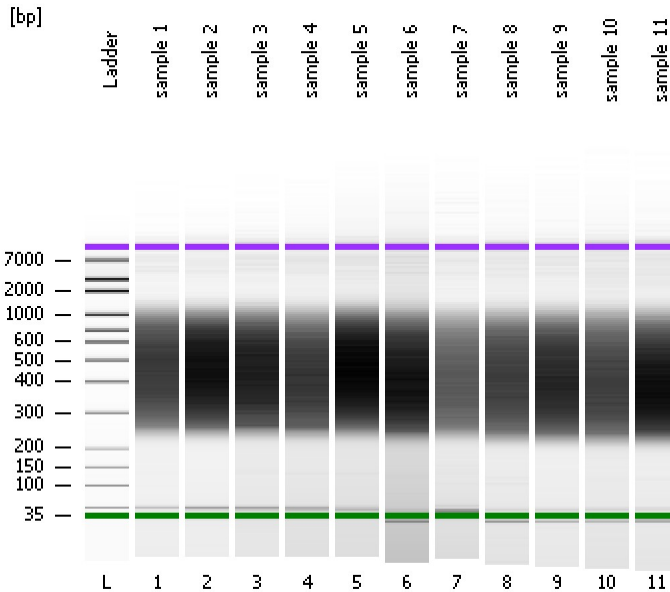


Assay Class: High Sensitivity DNA Assay  
Data Path: C:\...ents and Settings\Bioanalyzer\2015-12-02\2015-12-02\_006.xad

Created: 12/2/2015 2:47:19 PM  
Modified: 12/2/2015 3:44:23 PM

### Electrophoresis File Run Summary



#### Instrument Information:

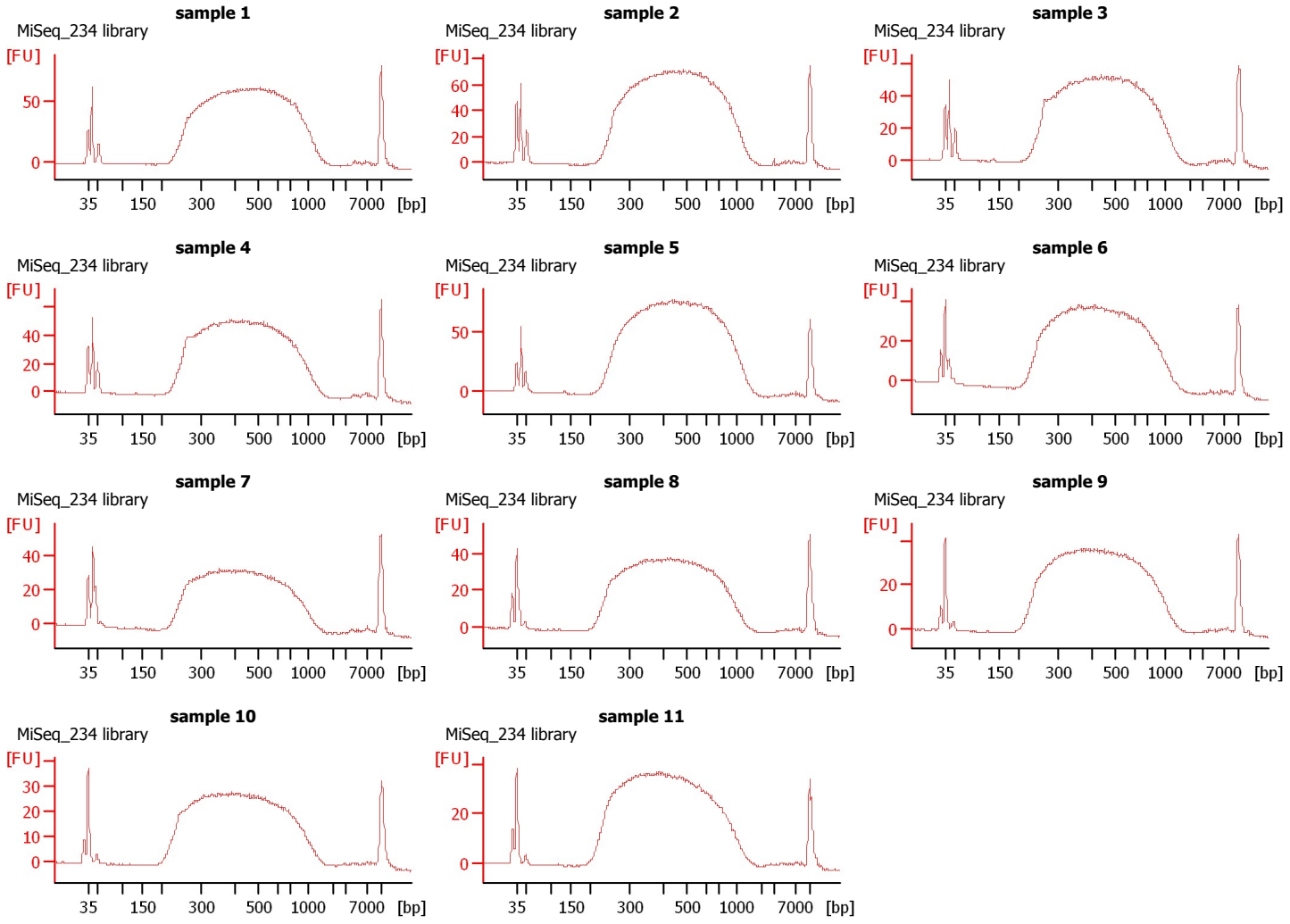
Instrument Name: DE13701086      Firmware: C.01.069  
Serial#: DE13701086      Type: G2938B

#### Assay Information:

Assay Origin Path: C:\Program Files\Agilent\2100 bioanalyzer\2100 expert\assays\dsDNA\High Sensitivity DNA.xsy  
Assay Class: High Sensitivity DNA Assay  
Version: 1.03  
Assay Comments: Copyright © 2003-2010 Agilent Technologies

#### Chip Information:

Chip Lot #:      Reagent Kit Lot #:      Chip Comments:



Assay Class: High Sensitivity DNA Assay  
Data Path: C:\...ents and Settings\Bioanalyzer\2015-12-02\2015-12-02\_006.xad

Created: 12/2/2015 2:47:19 PM  
Modified: 12/2/2015 3:44:23 PM

**Electrophoresis File Run Summary (Chip Summary)**

Sample Name	Sample Comment	Rest. Digest	Status	Observation	Result Label	Result Color
sample 1	MiSeq_234 library	<input type="checkbox"/>	✓			
sample 2	MiSeq_234 library	<input type="checkbox"/>	✓			
sample 3	MiSeq_234 library	<input type="checkbox"/>	✓			
sample 4	MiSeq_234 library	<input type="checkbox"/>	✓			
sample 5	MiSeq_234 library	<input type="checkbox"/>	✓			
sample 6	MiSeq_234 library	<input type="checkbox"/>	✓			
sample 7	MiSeq_234 library	<input type="checkbox"/>	✓			
sample 8	MiSeq_234 library	<input type="checkbox"/>	✓			
sample 9	MiSeq_234 library	<input type="checkbox"/>	✓			
sample 10	MiSeq_234 library	<input type="checkbox"/>	✓			
sample 11	MiSeq_234 library	<input type="checkbox"/>	✓			
Ladder		<input type="checkbox"/>	✓			

**Chip Lot #**

**Reagent Kit Lot #**

**Chip Comments :**

Assay Class: High Sensitivity DNA Assay  
Data Path: C:\...ents and Settings\Bioanalyzer\2015-12-02\2015-12-02\_006.xad

Created: 12/2/2015 2:47:19 PM  
Modified: 12/2/2015 3:44:23 PM

**Electrophoresis Assay Details**

**General Analysis Settings**

Number of Available Sample and Ladder Wells (Max.) : 12  
Minimum Visible Range [s] : 32  
Maximum Visible Range [s] : 138  
Start Analysis Time Range [s] : 33  
End Analysis Time Range [s] : 137.5  
Ladder Concentration [pg/μl] : 1950  
Uses Standard Area for Ladder Fragments  
Lower Marker Concentration [pg/μl] : 125  
Upper Marker Concentration [pg/μl] : 75  
Used Upper Marker for Quantitation  
Standard Curve Fit is Point to Point  
Show Data Aligned to Lower and Upper Marker

**Integrator Settings**

Integration Start Time [s] : 33.05  
Integration End Time [s] : 137  
Slope Threshold : 0.8  
Height Threshold [FU] : 5  
Area Threshold : 0.1  
Width Threshold [s] : 0.6  
Baseline Plateau [s] : 0.5

**Filter Settings**

Filter Width [s] : 0.5  
Polynomial Order : 4

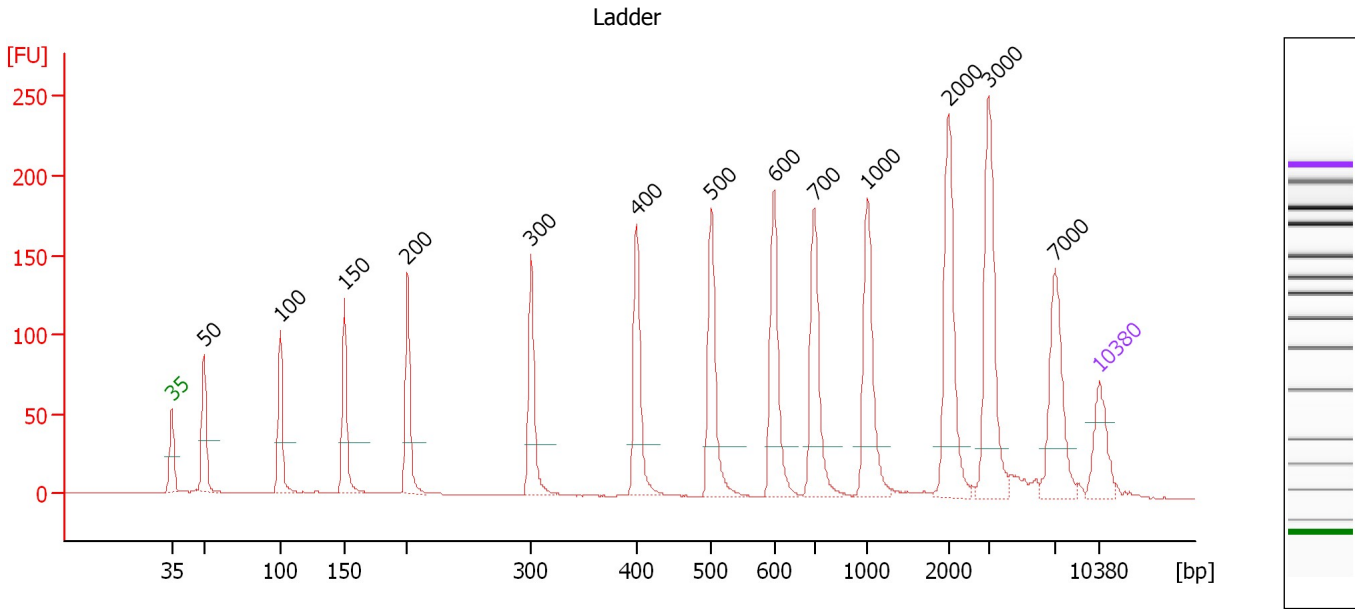
**Ladder**

Ladder Peak	Size	Area
1	35	160
2	50	210
3	100	208
4	150	221
5	200	242
6	300	270
7	400	305
8	500	306
9	600	336
10	700	321
11	1000	366
12	2000	413
13	3000	411
14	7000	400
15	10380	214

Assay Class: High Sensitivity DNA Assay  
 Data Path: C:\...ents and Settings\Bioanalyzer\2015-12-02\2015-12-02\_006.xad

Created: 12/2/2015 2:47:19 PM  
 Modified: 12/2/2015 3:44:23 PM

**Electropherogram Summary**



**Overall Results for Ladder**

Noise: 0.2

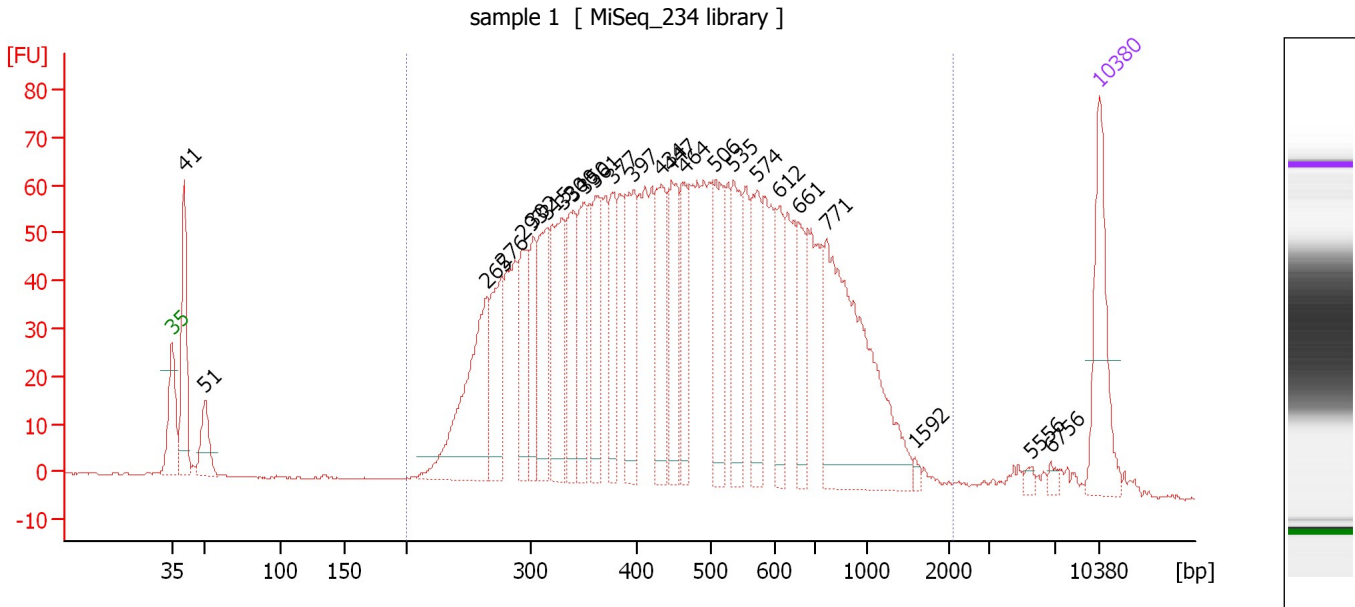
**Peak table for Ladder**

Peak	Size [bp]	Conc. [pg/μl]	Molarity [pmol/l]	Observations	Aligned Migration Time [s]
1	35	125.00	5,411.3	Lower Marker	43.00
2	50	150.00	4,545.5	Ladder Peak	45.41
3	100	150.00	2,272.7	Ladder Peak	51.18
4	150	150.00	1,515.2	Ladder Peak	56.00
5	200	150.00	1,136.4	Ladder Peak	60.77
6	300	150.00	757.6	Ladder Peak	70.08
7	400	150.00	568.2	Ladder Peak	78.02
8	500	150.00	454.5	Ladder Peak	83.70
9	600	150.00	378.8	Ladder Peak	88.42
10	700	150.00	324.7	Ladder Peak	91.45
11	1,000	150.00	227.3	Ladder Peak	95.42
12	2,000	150.00	113.6	Ladder Peak	101.56
13	3,000	150.00	75.8	Ladder Peak	104.59
14	7,000	150.00	32.5	Ladder Peak	109.60
15	10,380	75.00	10.9	Upper Marker	113.00

Assay Class: High Sensitivity DNA Assay  
 Data Path: C:\...ents and Settings\Bioanalyzer\2015-12-02\2015-12-02\_006.xad

Created: 12/2/2015 2:47:19 PM  
 Modified: 12/2/2015 3:44:23 PM

**Electropherogram Summary Continued ...**



**Overall Results for sample 1 : sample 1**

Number of peaks found: 25                      Corr. Area 1: 2,235.4  
 Noise: 0.2

**Peak table for sample 1 : sample 1**

Peak	Size [bp]	Conc. [pg/μl]	Molarity [pmol/l]	Observations	Aligned Migration Time [s]
1	35	125.00	5,411.3	Lower Marker	43.00
2	41	128.38	4,762.5		43.94
3	51	50.59	1,512.5		45.49
4	265	189.07	1,082.0		66.80
5	276	96.76	530.5		67.88
6	293	80.03	414.5		69.38
7	302	66.33	332.3		70.28
8	315	102.99	495.6		71.26
9	330	123.92	569.6		72.44
10	340	88.88	395.7		73.28
11	350	84.03	363.4		74.08
12	361	79.28	332.8		74.92
13	377	72.15	290.0		76.19
14	397	89.61	342.0		77.79
15	434	93.39	326.1		79.95
16	447	88.33	299.3		80.70
17	464	68.03	222.3		81.64
18	506	89.59	268.2		83.99
19	535	80.20	227.2		85.35
20	574	74.01	195.5		87.18
21	612	52.73	130.6		88.77
22	661	57.02	130.6		90.28
23	771	269.98	530.4		92.39
24	1,592	4.29	4.1		99.06
25	5,556	4.46	1.2		107.79

Assay Class: High Sensitivity DNA Assay  
 Data Path: C:\...ents and Settings\Bioanalyzer\2015-12-02\2015-12-02\_006.xad

Created: 12/2/2015 2:47:19 PM  
 Modified: 12/2/2015 3:44:23 PM

### Electropherogram Summary Continued ...

#### ... Peak table for sample 1 : sample 1

Peak	Size [bp]	Conc. [pg/μl]	Molarity [pmol/l]	Observations	Aligned Migration Time [s]
26	6,756	4.38	1.0		109.29
27	10,380	75.00	10.9	Upper Marker	113.00

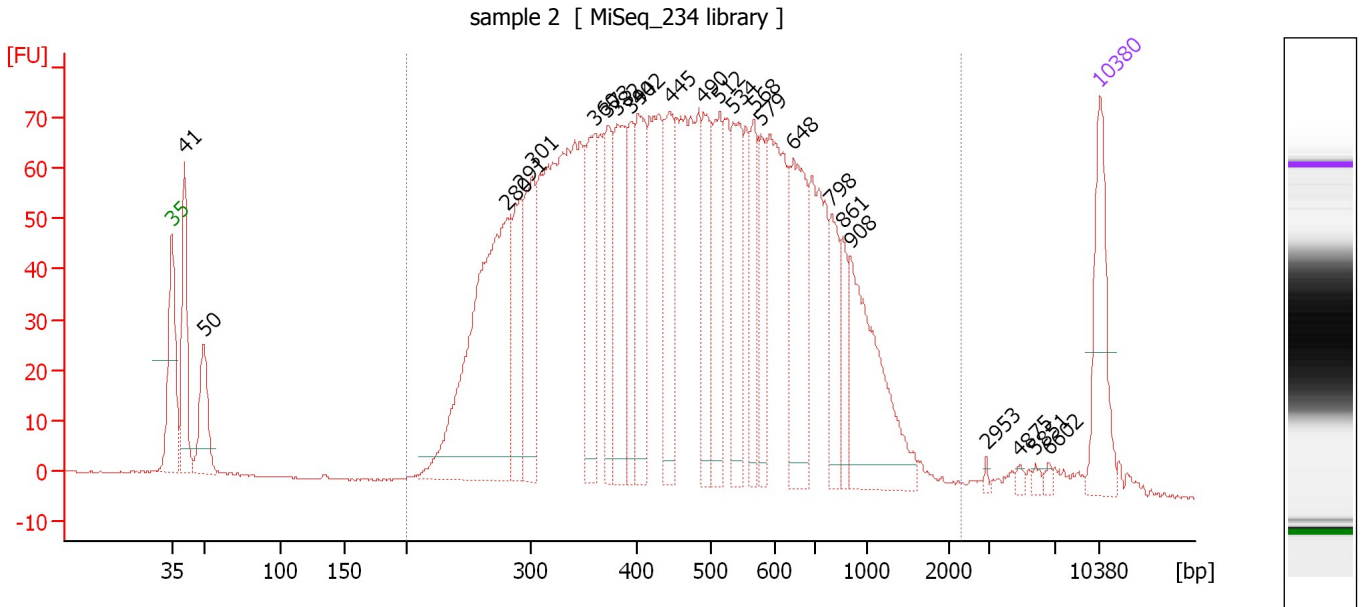
#### Region table for sample 1 : sample 1

From [bp]	To [bp]	Average Size [bp]	Corr. Area	Molarity [pmol/l]	Co Conc. lor [pg/μl]	% of Total	Size distribution in CV [%]
200	2,101	511	2,235.4	10,878.3	2,950.35	95	46.2

Assay Class: High Sensitivity DNA Assay  
 Data Path: C:\...ents and Settings\Bioanalyzer\2015-12-02\2015-12-02\_006.xad

Created: 12/2/2015 2:47:19 PM  
 Modified: 12/2/2015 3:44:23 PM

**Electropherogram Summary Continued ...**



**Overall Results for sample 2 : sample 2**

Number of peaks found: 24                      Corr. Area 1: 2,594.1  
 Noise: 0.1

**Peak table for sample 2 : sample 2**

Peak	Size [bp]	Conc. [pg/μl]	Molarity [pmol/l]	Observations	Aligned Migration Time [s]
1	35	125.00	5,411.3	Lower Marker	43.00
2	41	136.96	5,079.8		43.94
3	50	89.28	2,710.0		45.40
4	280	440.06	2,379.0		68.25
5	291	102.51	534.0		69.23
6	301	132.41	666.3		70.17
7	360	121.89	513.4		74.83
8	373	83.21	338.2		75.86
9	382	138.93	550.7		76.61
10	394	80.71	310.3		77.55
11	402	117.88	443.8		78.16
12	445	115.15	392.3		80.56
13	490	93.68	290.0		83.10
14	512	107.84	318.9		84.28
15	534	108.05	306.5		85.31
16	568	66.23	176.7		86.91
17	579	63.38	165.9		87.43
18	648	134.27	314.0		89.87
19	798	58.17	110.5		92.74
20	861	39.51	69.5		93.58
21	908	166.28	277.6		94.20
22	2,953	2.56	1.3		104.44
23	4,875	3.91	1.2		106.94
24	5,851	3.96	1.0		108.16
25	6,602	3.64	0.8		109.10

Assay Class: High Sensitivity DNA Assay  
Data Path: C:\...ents and Settings\Bioanalyzer\2015-12-02\2015-12-02\_006.xad

Created: 12/2/2015 2:47:19 PM  
Modified: 12/2/2015 3:44:23 PM

**Electropherogram Summary Continued ...****... Peak table for sample 2 : sample 2**

Peak	Size [bp]	Conc. [pg/ $\mu$ l]	Molarity [pmol/l]	Observations	Aligned Migration Time [s]
26	10,380	75.00	10.9	Upper Marker	113.00

**Region table for sample 2 : sample 2**

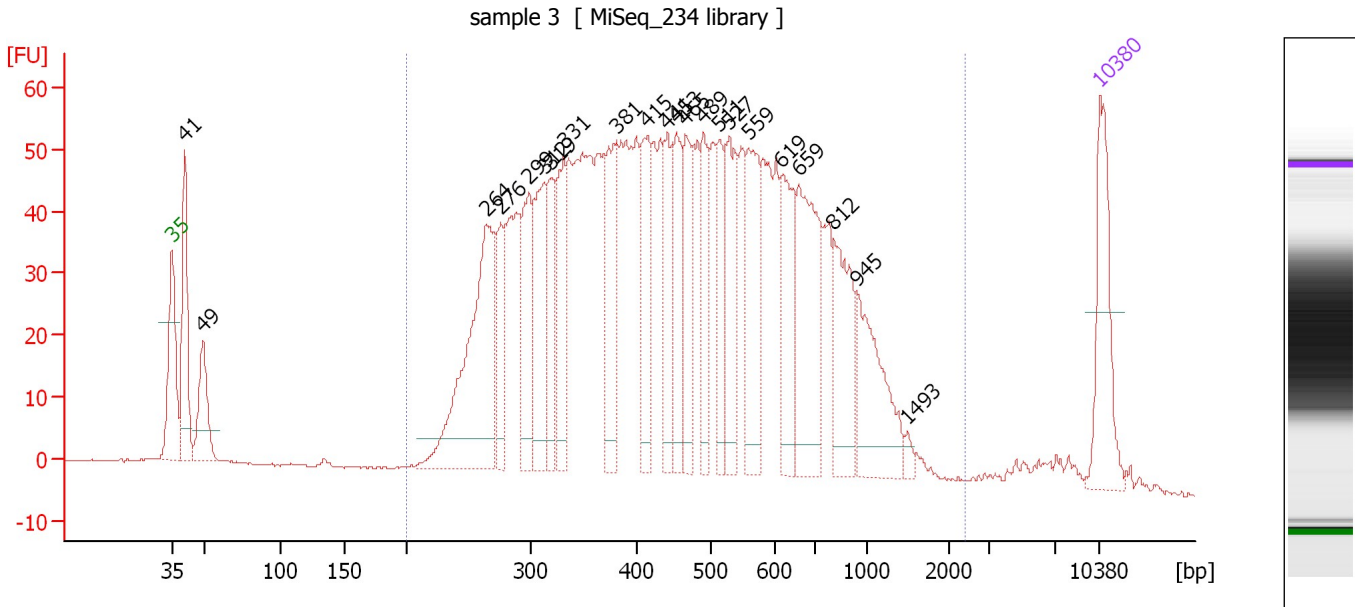
From [bp]	To [bp]	Average Size [bp]	Corr. Area	Molarity [pmol/l]	Co Conc. lor [pg/ $\mu$ l]	% of Total	Size distribution in CV [%]
200	2,324	507	2,594.1	13,458.2	3,627.34	94	46.7



Assay Class: High Sensitivity DNA Assay  
 Data Path: C:\...ents and Settings\Bioanalyzer\2015-12-02\2015-12-02\_006.xad

Created: 12/2/2015 2:47:19 PM  
 Modified: 12/2/2015 3:44:23 PM

**Electropherogram Summary Continued ...**



**Overall Results for sample 3 : sample 3**

Number of peaks found: 22                      Corr. Area 1: 1,960.3  
 Noise: 0.2

**Peak table for sample 3 : sample 3**

Peak	Size [bp]	Conc. [pg/μl]	Molarity [pmol/l]	Observations	Aligned Migration Time [s]
1	35	125.00	5,411.3	Lower Marker	43.00
2	41	129.50	4,795.3		43.95
3	49	79.68	2,438.9		45.33
4	264	267.27	1,534.0		66.73
5	276	67.57	371.3		67.82
6	299	103.05	522.7		69.96
7	312	115.29	559.4		71.06
8	319	72.98	346.2		71.63
9	331	102.32	467.8		72.58
10	381	103.16	410.8		76.48
11	415	89.74	327.9		78.86
12	441	67.25	231.2		80.33
13	453	77.04	257.6		81.04
14	465	86.22	281.0		81.71
15	489	64.78	200.6		83.09
16	511	62.80	186.1		84.23
17	527	93.30	268.0		84.99
18	559	104.99	284.8		86.46
19	619	90.06	220.6		88.99
20	659	144.30	331.5		90.22
21	812	90.55	168.9		92.93
22	945	96.31	154.4		94.69
23	1,493	6.52	6.6		98.45
24	10,380	75.00	10.9	Upper Marker	113.00


Assay Class: High Sensitivity DNA Assay  
Data Path: C:\...ents and Settings\Bioanalyzer\2015-12-02\2015-12-02\_006.xad

Created: 12/2/2015 2:47:19 PM  
Modified: 12/2/2015 3:44:23 PM

**Electropherogram Summary Continued ...**

... Region table for sample 3 :

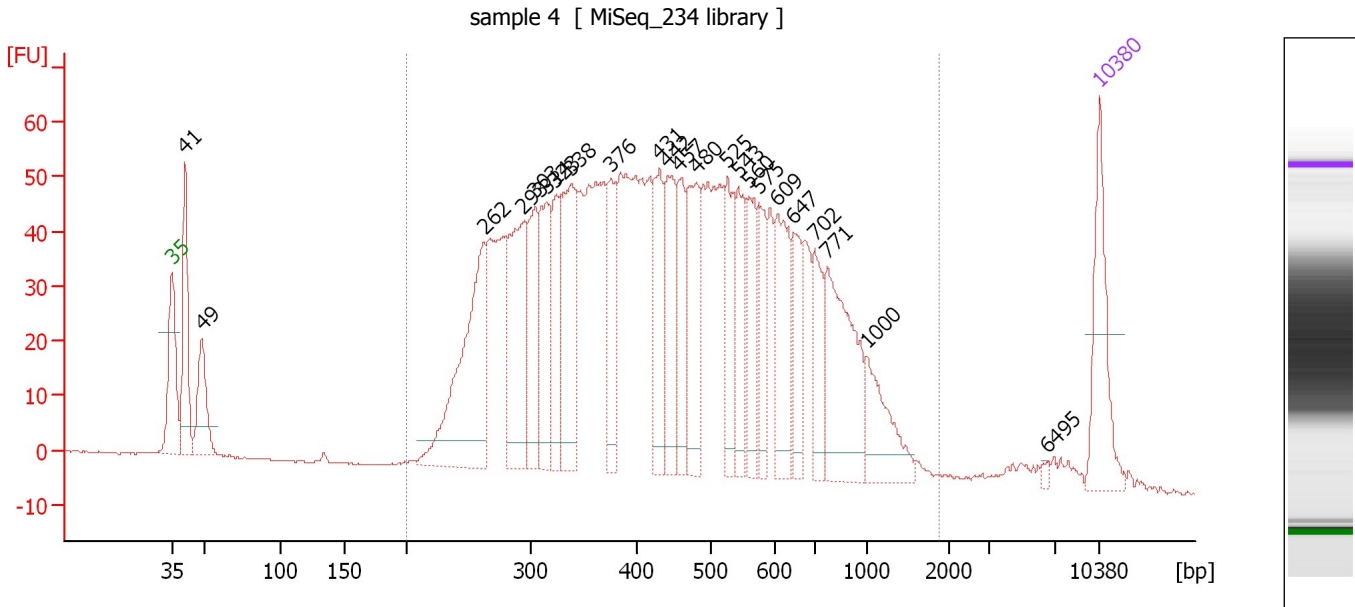
sample 3

From [bp]	To [bp]	Average Size [bp]	Corr. Area	Molarity [pmol/l]	Co Conc. lor [pg/μl]	% of Total	Size distribution in CV [%]
200	2,402	507	1,960.3	11,813.8	 3,164.17	93	47.7

Assay Class: High Sensitivity DNA Assay  
 Data Path: C:\...ents and Settings\Bioanalyzer\2015-12-02\2015-12-02\_006.xad

Created: 12/2/2015 2:47:19 PM  
 Modified: 12/2/2015 3:44:23 PM

**Electropherogram Summary Continued ...**



**Overall Results for sample 4 : sample 4**

Number of peaks found: 23                      Corr. Area 1: 1,933.2  
 Noise: 0.2

**Peak table for sample 4 : sample 4**

Peak	Size [bp]	Conc. [pg/μl]	Molarity [pmol/l]	Observations	Aligned Migration Time [s]
1	35	125.00	5,411.3	Lower Marker	43.00
2	41	134.25	4,927.8		44.01
3	49	84.82	2,620.1		45.26
4	262	243.46	1,408.1		66.54
5	293	176.31	910.3		69.47
6	303	97.69	488.2		70.34
7	314	109.65	529.0		71.20
8	323	75.55	354.2		71.92
9	338	150.84	675.6		73.12
10	376	71.74	289.3		76.10
11	431	88.77	312.4		79.75
12	442	97.83	335.7		80.38
13	457	75.23	249.5		81.24
14	480	107.54	339.1		82.59
15	525	78.25	225.7		84.89
16	543	74.72	208.6		85.71
17	560	71.44	193.3		86.53
18	575	55.85	147.1		87.25
19	609	98.43	245.0		88.69
20	647	55.96	131.1		89.84
21	702	59.84	129.1		91.48
22	771	150.29	295.3		92.39
23	1,000	66.12	100.2		95.42
24	6,495	3.44	0.8		108.96
25	10,380	75.00	10.9	Upper Marker	113.00


Assay Class: High Sensitivity DNA Assay  
Data Path: C:\...ents and Settings\Bioanalyzer\2015-12-02\2015-12-02\_006.xad

Created: 12/2/2015 2:47:19 PM  
Modified: 12/2/2015 3:44:23 PM

**Electropherogram Summary Continued ...**

... Region table for sample 4 :

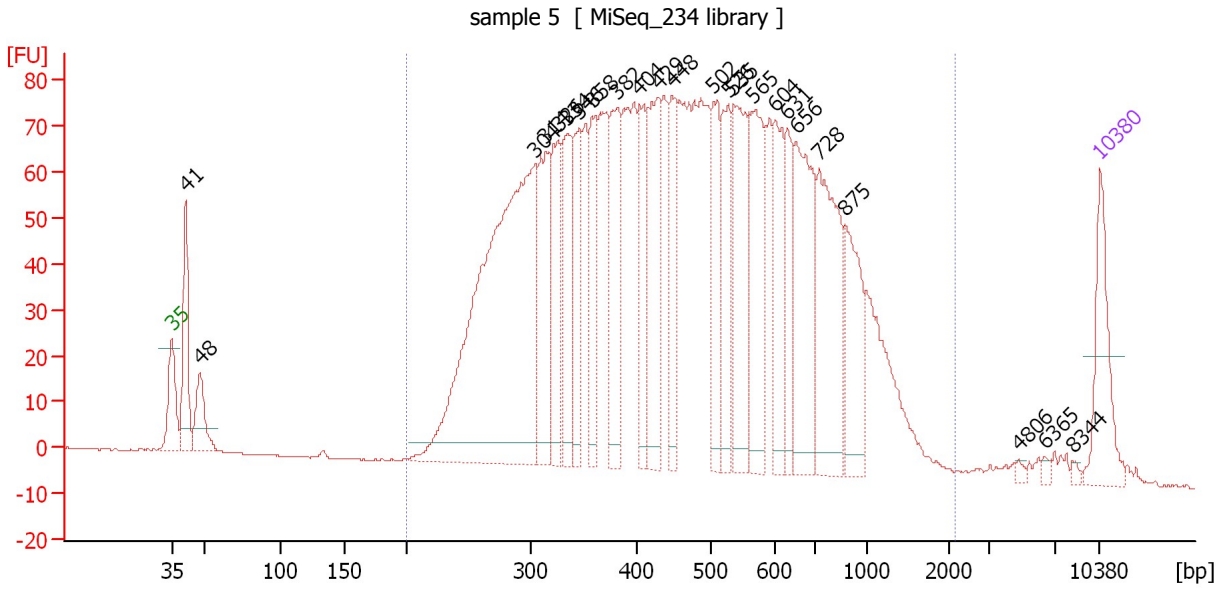
sample 4

From [bp]	To [bp]	Average Size [bp]	Corr. Area	Molarity [pmol/l]	Co Conc. lor [pg/μl]	% of Total	Size distribution in CV [%]
200	1,880	489	1,933.2	11,786.0	 3,081.10	93	45.1

Assay Class: High Sensitivity DNA Assay  
 Data Path: C:\...ents and Settings\Bioanalyzer\2015-12-02\2015-12-02\_006.xad

Created: 12/2/2015 2:47:19 PM  
 Modified: 12/2/2015 3:44:23 PM

**Electropherogram Summary Continued ...**



**Overall Results for sample 5 : sample 5**

Number of peaks found: 24                      Corr. Area 1: 2,850.4  
 Noise: 0.1

**Peak table for sample 5 : sample 5**

Peak	Size [bp]	Conc. [pg/μl]	Molarity [pmol/l]	Observations	Aligned Migration Time [s]
1	35	125.00	5,411.3	Lower Marker	43.00
2	41	131.80	4,826.1		44.03
3	48	67.73	2,135.4		45.10
4	304	774.81	3,864.2		70.38
5	314	149.24	721.0		71.17
6	326	142.81	663.9		72.14
7	334	120.21	545.4		72.78
8	346	110.59	484.0		73.75
9	358	111.77	473.2		74.68
10	382	140.06	555.7		76.58
11	404	113.29	425.0		78.24
12	429	150.27	530.9		79.66
13	448	97.50	329.9		80.73
14	502	112.87	340.4		83.81
15	526	108.14	311.4		84.93
16	535	166.65	471.6		85.37
17	565	163.24	437.4		86.79
18	604	104.41	261.9		88.54
19	631	73.90	177.3		89.37
20	656	186.80	431.7		90.11
21	728	196.63	409.4		91.81
22	875	112.43	194.6		93.77
23	4,806	4.01	1.3		106.85
24	6,365	3.82	0.9		108.80
25	8,344	3.76	0.7		110.95

Assay Class: High Sensitivity DNA Assay  
Data Path: C:\...ents and Settings\Bioanalyzer\2015-12-02\2015-12-02\_006.xad

Created: 12/2/2015 2:47:19 PM  
Modified: 12/2/2015 3:44:23 PM

**Electropherogram Summary Continued ...****... Peak table for sample 5 : sample 5**

Peak	Size [bp]	Conc. [pg/ $\mu$ l]	Molarity [pmol/l]	Observations	Aligned Migration Time [s]
26	10,380	75.00	10.9	Upper Marker	113.00

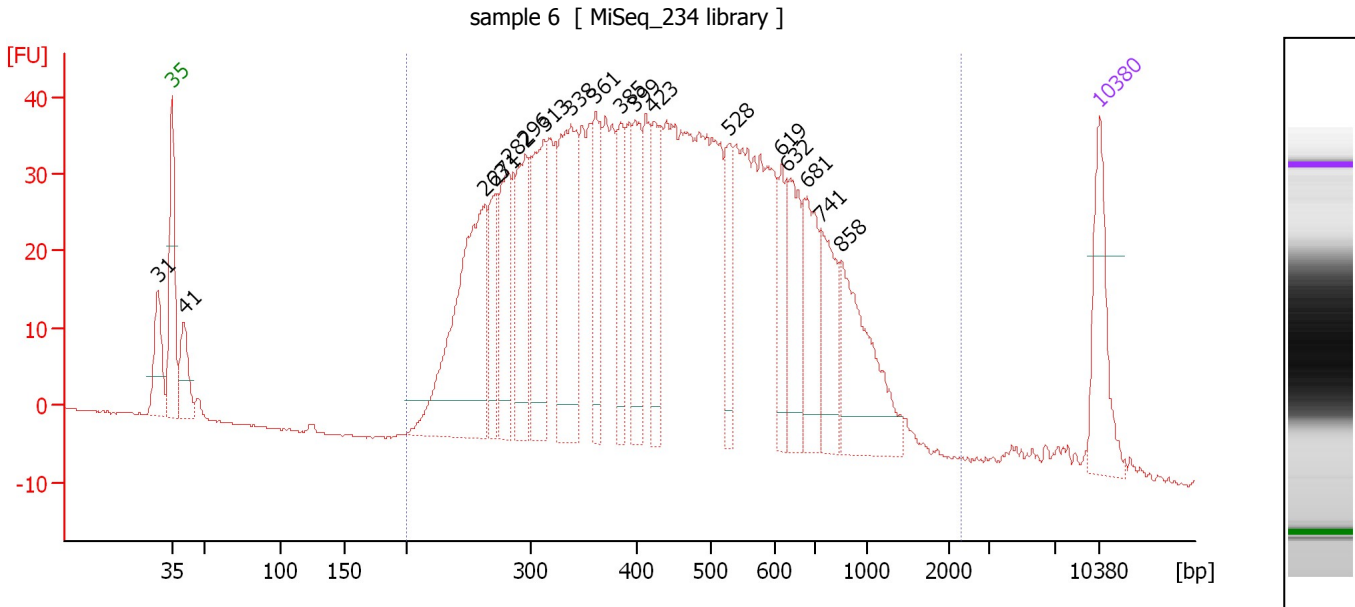
**Region table for sample 5 : sample 5**

From [bp]	To [bp]	Average Size [bp]	Corr. Area	Molarity [pmol/l]	Co Conc. lor [pg/ $\mu$ l]	% of Total	Size distribution in CV [%]
200	2,146	515	2,850.4	16,056.5	4,356.03	95	47.9

Assay Class: High Sensitivity DNA Assay  
 Data Path: C:\...ents and Settings\Bioanalyzer\2015-12-02\2015-12-02\_006.xad

Created: 12/2/2015 2:47:19 PM  
 Modified: 12/2/2015 3:44:23 PM

**Electropherogram Summary Continued ...**



**Overall Results for sample 6 : sample 6**

Number of peaks found: 18                      Corr. Area 1: 1,477.1  
 Noise: 0.2

**Peak table for sample 6 : sample 6**

Peak	Size [bp]	Conc. [pg/μl]	Molarity [pmol/l]	Observations	Aligned Migration Time [s]
1	31	0.00	0.0		41.95
2	35	125.00	5,411.3	Lower Marker	43.00
3	41	68.80	2,567.1		43.90
4	263	327.25	1,886.9		66.62
5	271	76.93	429.5		67.42
6	282	117.76	633.6		68.37
7	296	140.46	720.1		69.67
8	313	161.78	783.0		71.12
9	338	200.96	901.8		73.07
10	361	90.30	379.1		74.92
11	385	78.12	307.5		76.82
12	399	94.12	357.0		77.97
13	423	80.87	289.7		79.33
14	528	68.76	197.2		85.03
15	619	52.52	128.6		88.98
16	632	92.79	222.5		89.38
17	681	92.74	206.2		90.88
18	741	83.24	170.3		91.98
19	858	143.20	252.9		93.54
20	10,380	75.00	10.9	Upper Marker	113.00

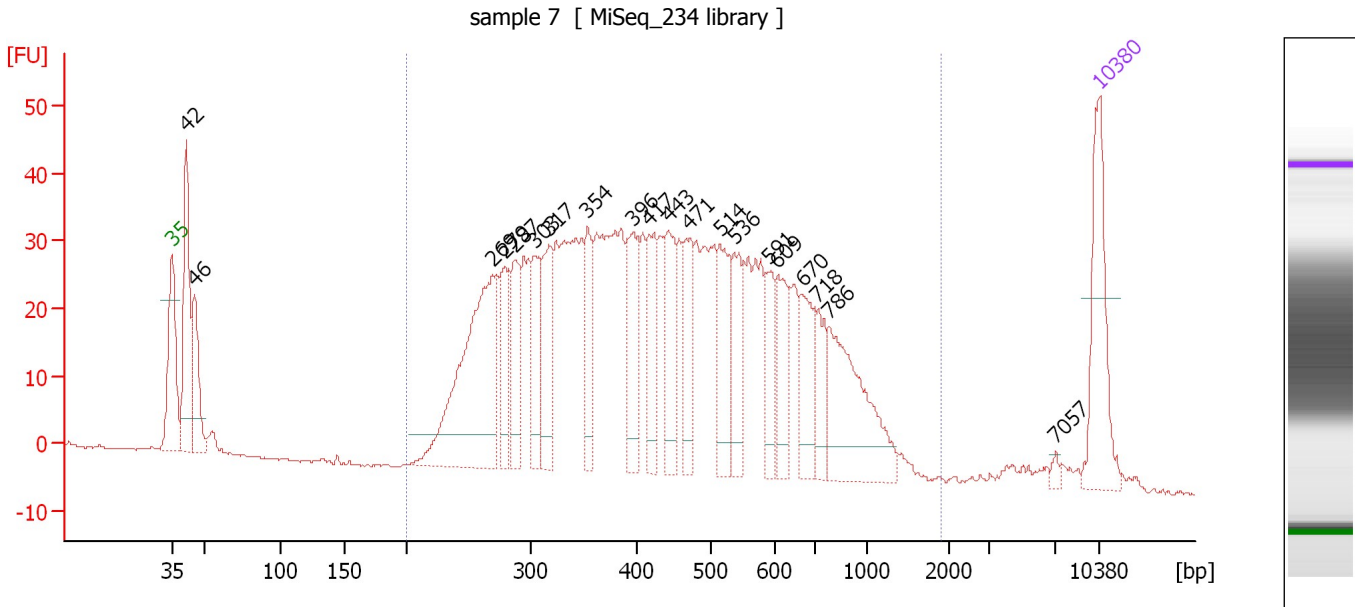
**Region table for sample 6 : sample 6**

From [bp]	To [bp]	Average Size [bp]	Corr. Area	Molarity [pmol/l]	Co Conc. [pg/μl]	% of Total	Size distribution in CV [%]
200	2,303	489	1,477.1	12,931.8	3,348.53	95	48.0

Assay Class: High Sensitivity DNA Assay  
 Data Path: C:\...ents and Settings\Bioanalyzer\2015-12-02\2015-12-02\_006.xad

Created: 12/2/2015 2:47:19 PM  
 Modified: 12/2/2015 3:44:23 PM

**Electropherogram Summary Continued ...**



**Overall Results for sample 7 : sample 7**

Number of peaks found: 20                      Corr. Area 1: 1,198.9  
 Noise: 0.2

**Peak table for sample 7 : sample 7**

Peak	Size [bp]	Conc. [pg/μl]	Molarity [pmol/l]	Observations	Aligned Migration Time [s]
1	35	125.00	5,411.3	Lower Marker	43.00
2	42	138.31	5,009.0		44.10
3	46	76.04	2,528.5		44.70
4	269	254.37	1,431.7		67.22
5	279	59.62	323.9		68.11
6	287	64.49	340.6		68.86
7	303	55.81	278.6		70.36
8	317	72.88	348.7		71.41
9	354	55.09	235.9		74.36
10	396	73.68	282.0		77.70
11	417	64.57	234.5		79.00
12	443	71.15	243.5		80.45
13	471	54.06	173.9		82.04
14	514	69.79	205.8		84.34
15	536	56.28	159.1		85.39
16	591	37.61	96.5		87.99
17	609	51.30	127.7		88.68
18	670	53.87	121.9		90.53
19	718	37.63	79.4		91.68
20	786	123.18	237.6		92.58
21	7,057	3.89	0.8		109.65
22	10,380	75.00	10.9	Upper Marker	113.00




Assay Class: High Sensitivity DNA Assay  
Data Path: C:\...ents and Settings\Bioanalyzer\2015-12-02\2015-12-02\_006.xad

Created: 12/2/2015 2:47:19 PM  
Modified: 12/2/2015 3:44:23 PM

**Electropherogram Summary Continued ...**

... Region table for sample 7 :

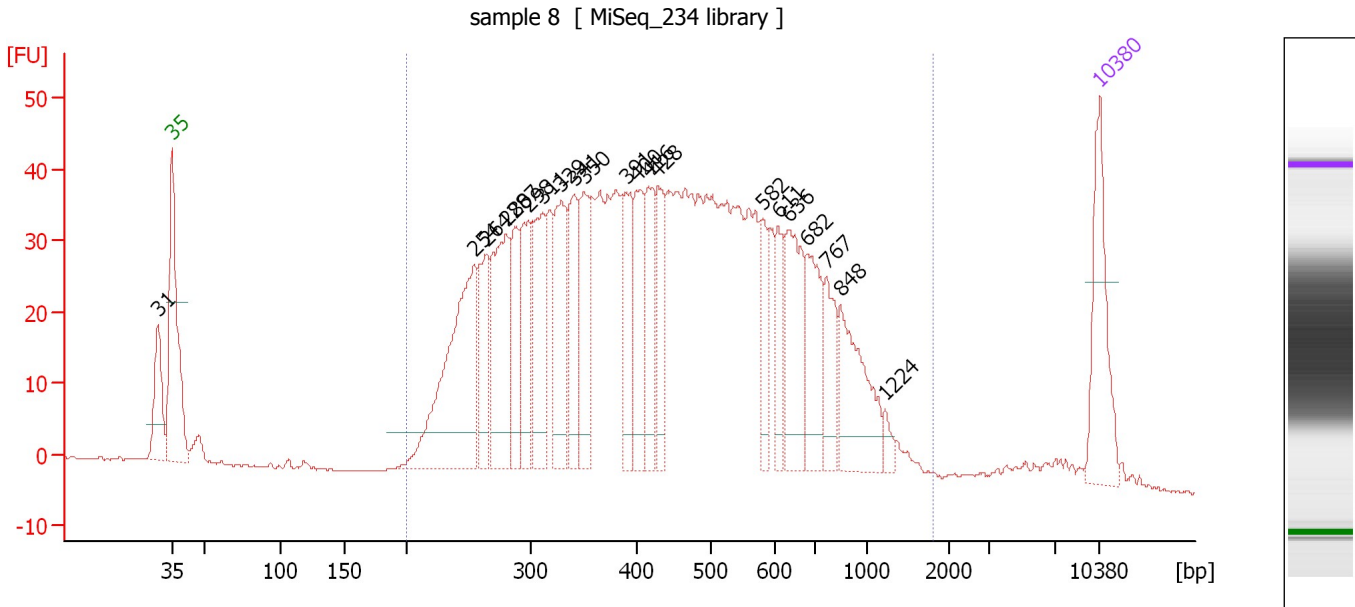
sample 7

From [bp]	To [bp]	Average Size [bp]	Corr. Area	Molarity [pmol/l]	Co Conc. lor [pg/μl]	% of Total	Size distribution in CV [%]
200	1,910	475	1,198.9	8,143.7	 2,100.24	92	42.6

Assay Class: High Sensitivity DNA Assay  
 Data Path: C:\...ents and Settings\Bioanalyzer\2015-12-02\2015-12-02\_006.xad

Created: 12/2/2015 2:47:19 PM  
 Modified: 12/2/2015 3:44:23 PM

**Electropherogram Summary Continued ...**



**Overall Results for sample 8 : sample 8**

Number of peaks found: 21                      Corr. Area 1: 1,396.4  
 Noise: 0.1

**Peak table for sample 8 : sample 8**

Peak	Size [bp]	Conc. [pg/μl]	Molarity [pmol/l]	Observations	Aligned Migration Time [s]
1	31	0.00	0.0		41.92
2	35	125.00	5,411.3	Lower Marker	43.00
3	254	245.19	1,464.5		65.77
4	264	78.96	453.9		66.69
5	280	147.12	797.4		68.18
6	287	74.58	394.1		68.85
7	298	90.63	460.4		69.92
8	311	101.11	492.8		70.95
9	329	101.14	465.8		72.38
10	341	79.69	353.8		73.36
11	350	94.98	410.8		74.08
12	391	72.86	282.4		77.31
13	400	77.03	291.7		78.03
14	416	67.11	244.3		78.95
15	428	66.42	235.1		79.62
16	582	45.85	119.4		87.56
17	611	43.11	107.0		88.74
18	636	96.17	229.1		89.51
19	682	75.28	167.3		90.90
20	767	50.37	99.5		92.33
21	848	94.04	167.9		93.41
22	1,224	9.50	11.8		96.79
23	10,380	75.00	10.9	Upper Marker	113.00


Assay Class: High Sensitivity DNA Assay  
Data Path: C:\...ents and Settings\Bioanalyzer\2015-12-02\2015-12-02\_006.xad

Created: 12/2/2015 2:47:19 PM  
Modified: 12/2/2015 3:44:23 PM

**Electropherogram Summary Continued ...**

... Region table for sample 8 :

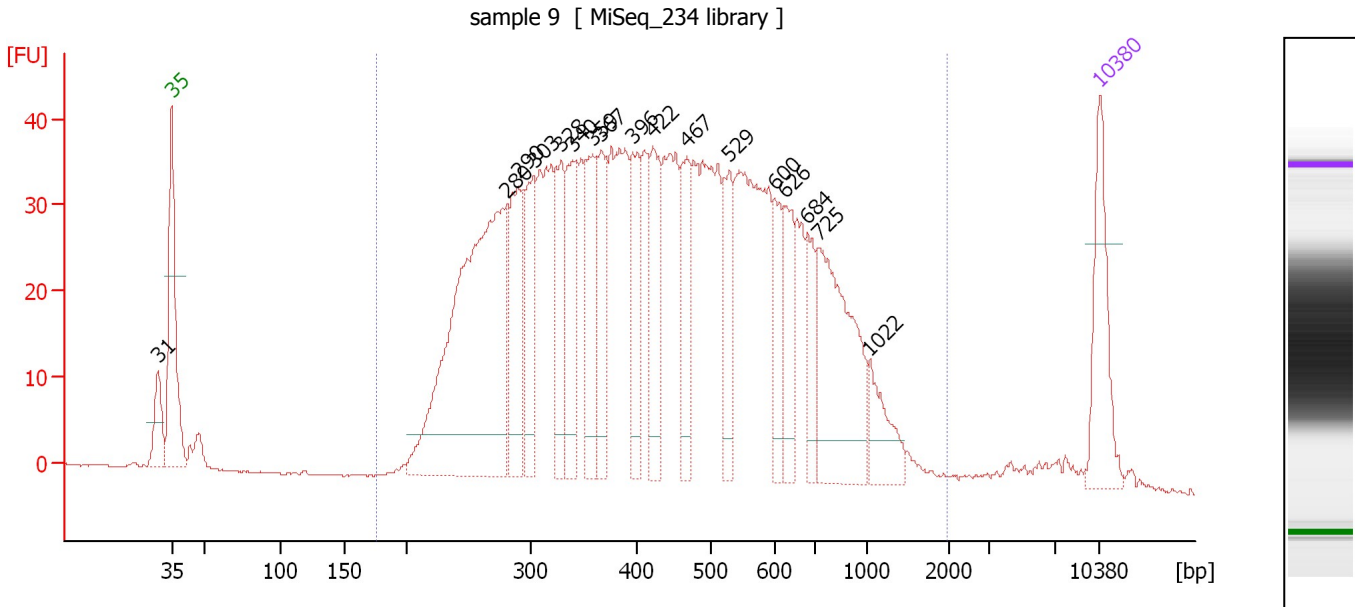
sample 8

From [bp]	To [bp]	Average Size [bp]	Corr. Area	Molarity [pmol/l]	Co Conc. lor [pg/μl]	% of Total	Size distribution in CV [%]
200	1,809	477	1,396.4	10,885.1	 2,770.69	96	44.8

Assay Class: High Sensitivity DNA Assay  
 Data Path: C:\...ents and Settings\Bioanalyzer\2015-12-02\2015-12-02\_006.xad

Created: 12/2/2015 2:47:19 PM  
 Modified: 12/2/2015 3:44:23 PM

**Electropherogram Summary Continued ...**



**Overall Results for sample 9 : sample 9**

Number of peaks found: 17                      Corr. Area 1: 1,328.0  
 Noise: 0.1

**Peak table for sample 9 : sample 9**

Peak	Size [bp]	Conc. [pg/μl]	Molarity [pmol/l]	Observations	Aligned Migration Time [s]
1	31	0.00	0.0		41.92
2	35	125.00	5,411.3	Lower Marker	43.00
3	280	539.37	2,921.9		68.19
4	290	131.84	688.3		69.17
5	303	101.58	508.2		70.31
6	328	88.76	409.8		72.32
7	340	105.92	472.2		73.25
8	359	103.68	437.9		74.75
9	367	84.51	348.7		75.42
10	396	85.09	325.2		77.74
11	422	88.79	318.5		79.29
12	467	84.17	273.1		81.82
13	529	70.49	201.9		85.07
14	600	58.42	147.5		88.43
15	626	68.19	165.1		89.20
16	684	47.76	105.8		90.96
17	725	190.07	397.0		91.78
18	1,022	47.79	70.9		95.55
19	10,380	75.00	10.9	Upper Marker	113.00

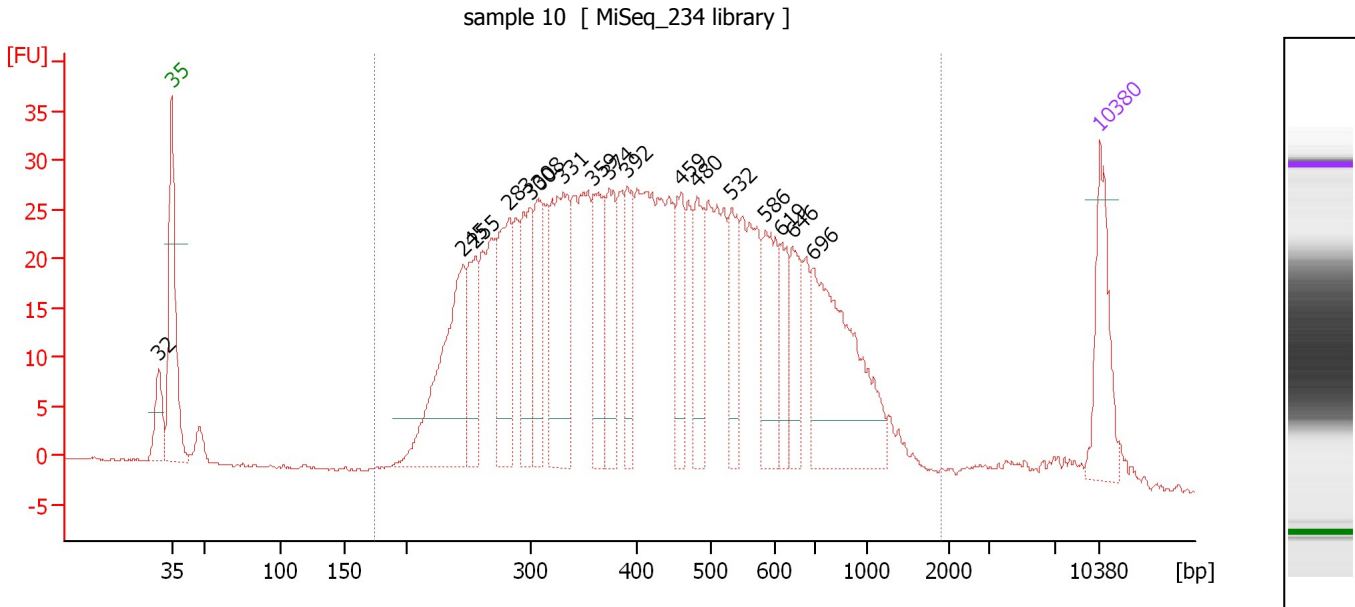
**Region table for sample 9 : sample 9**

From [bp]	To [bp]	Average Size [bp]	Corr. Area	Molarity [pmol/l]	Co Conc. [pg/μl]	% of Total	Size distribution in CV [%]
175	1,988	477	1,328.0	12,642.4	3,199.35	97	46.6

Assay Class: High Sensitivity DNA Assay  
 Data Path: C:\...ents and Settings\Bioanalyzer\2015-12-02\2015-12-02\_006.xad

Created: 12/2/2015 2:47:19 PM  
 Modified: 12/2/2015 3:44:23 PM

**Electropherogram Summary Continued ...**



**Overall Results for sample 10 : sample 10**

Number of peaks found: 17                      Corr. Area 1: 1,019.4  
 Noise: 0.1

**Peak table for sample 10 : sample 10**

Peak	Size [bp]	Conc. [pg/μl]	Molarity [pmol/l]	Observations	Aligned Migration Time [s]
1	32	0.00	0.0		42.02
2	35	125.00	5,411.3	Lower Marker	43.00
3	245	251.50	1,553.6		64.99
4	255	92.36	549.4		65.87
5	283	150.40	806.6		68.45
6	300	121.33	613.3		70.06
7	308	91.31	449.9		70.68
8	331	188.28	861.9		72.54
9	359	101.64	429.0		74.77
10	374	98.93	400.8		75.96
11	392	79.39	307.2		77.35
12	459	87.45	288.5		81.39
13	480	84.93	267.9		82.58
14	532	72.37	206.0		85.22
15	586	94.93	245.5		87.75
16	619	50.11	122.7		88.99
17	646	62.93	147.5		89.82
18	696	242.60	528.2		91.32
19	10,380	75.00	10.9	Upper Marker	113.00

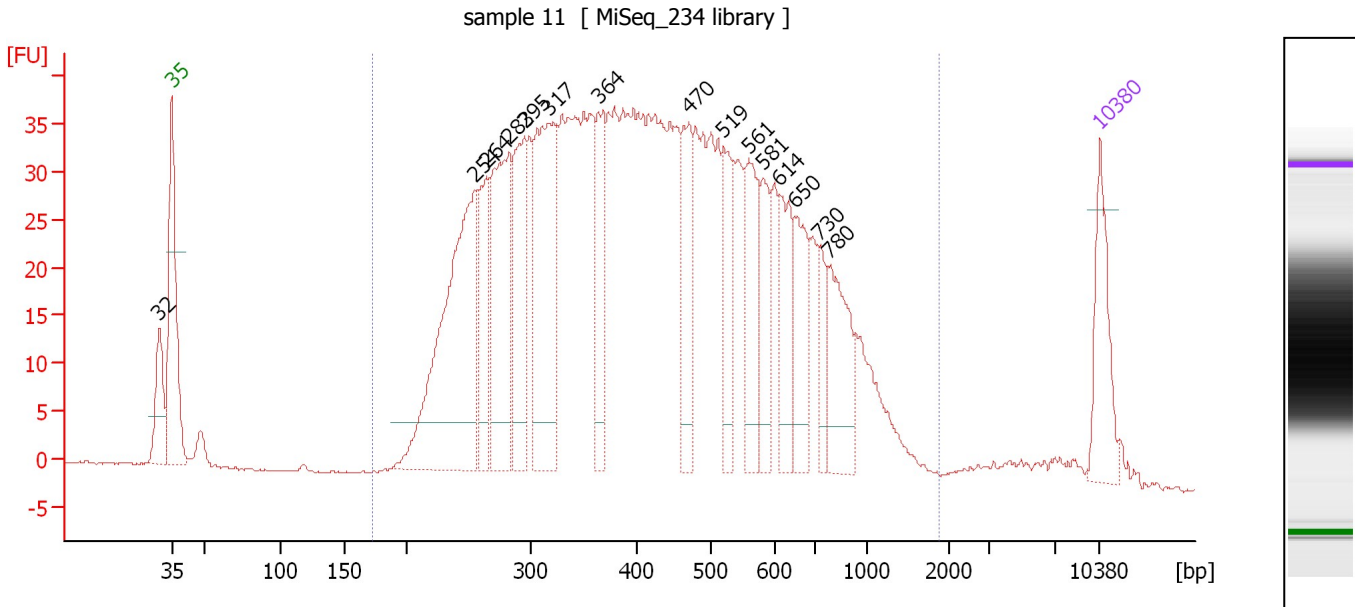
**Region table for sample 10 : sample 10**

From [bp]	To [bp]	Average Size [bp]	Corr. Area	Molarity [pmol/l]	Co Conc. [pg/μl]	% of Total	Size distribution in CV [%]
173	1,907	475	1,019.4	13,090.6	3,272.13	96	47.5

Assay Class: High Sensitivity DNA Assay  
 Data Path: C:\...ents and Settings\Bioanalyzer\2015-12-02\2015-12-02\_006.xad

Created: 12/2/2015 2:47:19 PM  
 Modified: 12/2/2015 3:44:23 PM

**Electropherogram Summary Continued ...**



**Overall Results for sample 11 : sample 11**

Number of peaks found: 15                      Corr. Area 1: 1,310.7  
 Noise: 0.2

**Peak table for sample 11 : sample 11**

Peak	Size [bp]	Conc. [pg/μl]	Molarity [pmol/l]	Observations	Aligned Migration Time [s]
1	32	0.00	0.0		42.02
2	35	125.00	5,411.3	Lower Marker	43.00
3	254	445.31	2,654.5		65.82
4	264	127.02	728.5		66.75
5	283	251.29	1,347.7		68.45
6	295	167.45	860.8		69.59
7	317	293.52	1,404.6		71.40
8	364	117.65	490.3		75.13
9	470	106.58	343.4		82.01
10	519	93.81	273.8		84.60
11	561	110.45	298.5		86.56
12	581	77.42	201.7		87.55
13	614	92.44	228.2		88.84
14	650	93.76	218.7		89.93
15	730	46.27	96.1		91.84
16	780	113.08	219.5		92.51
17	10,380	75.00	10.9	Upper Marker	113.00

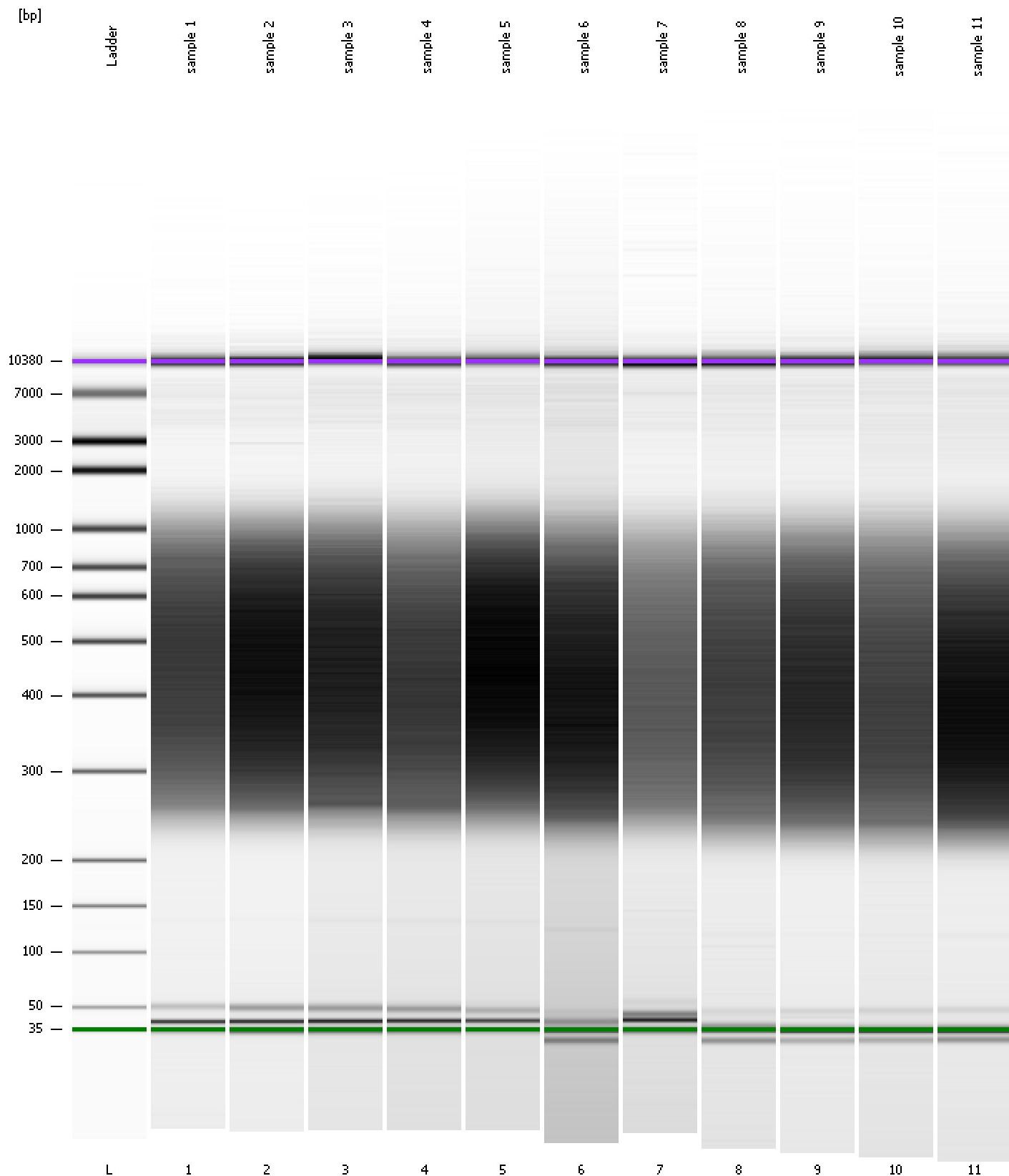
**Region table for sample 11 : sample 11**

From [bp]	To [bp]	Average Size [bp]	Corr. Area	Molarity [pmol/l]	Co Conc. lor [pg/μl]	% of Total	Size distribution in CV [%]
172	1,883	464	1,310.7	16,913.5	4,179.98	96	46.2

Assay Class: High Sensitivity DNA Assay  
Data Path: C:\...ents and Settings\Bioanalyzer\2015-12-02\2015-12-02\_006.xad

Created: 12/2/2015 2:47:19 PM  
Modified: 12/2/2015 3:44:23 PM

**Gel Image**



Assay Class: High Sensitivity DNA Assay  
 Data Path: C:\...ents and Settings\Bioanalyzer\2015-12-02\2015-12-02\_006.xad

Created: 12/2/2015 2:47:19 PM  
 Modified: 12/2/2015 3:44:23 PM

**Run Logbook**

Description	Number	Source	Category	Sub Category	Time	Time Zone	User	Host
Run ended on port 1 (Number of wells acquired: 12)		Instrument	Run		12/2/2015 3:28:35 PM	(GMT --08:00) Pacific Standard Time	UC Davis	D8XSMGH1
Run started on port 1 (File: C:\Documents and Settings\Bioanalyzer\2015-12-02\2015-12-02_006.xad)		Instrument	Run		12/2/2015 2:47:24 PM	(GMT --08:00) Pacific Standard Time	UC Davis	D8XSMGH1
Product Number : G2938B		Instrument	Run		12/2/2015 2:47:24 PM	(GMT --08:00) Pacific Standard Time	UC Davis	D8XSMGH1
Name :		Instrument	Run		12/2/2015 2:47:24 PM	(GMT --08:00) Pacific Standard Time	UC Davis	D8XSMGH1
Vendor : Agilent Technologies		Instrument	Run		12/2/2015 2:47:24 PM	(GMT --08:00) Pacific Standard Time	UC Davis	D8XSMGH1
Serial# : DE13701086		Instrument	Run		12/2/2015 2:47:24 PM	(GMT --08:00) Pacific Standard Time	UC Davis	D8XSMGH1
Firmware : C.01.069		Instrument	Run		12/2/2015 2:47:24 PM	(GMT --08:00) Pacific Standard Time	UC Davis	D8XSMGH1
Cartridge : Electrode		Instrument	Run		12/2/2015 2:47:24 PM	(GMT --08:00) Pacific Standard Time	UC Davis	D8XSMGH1