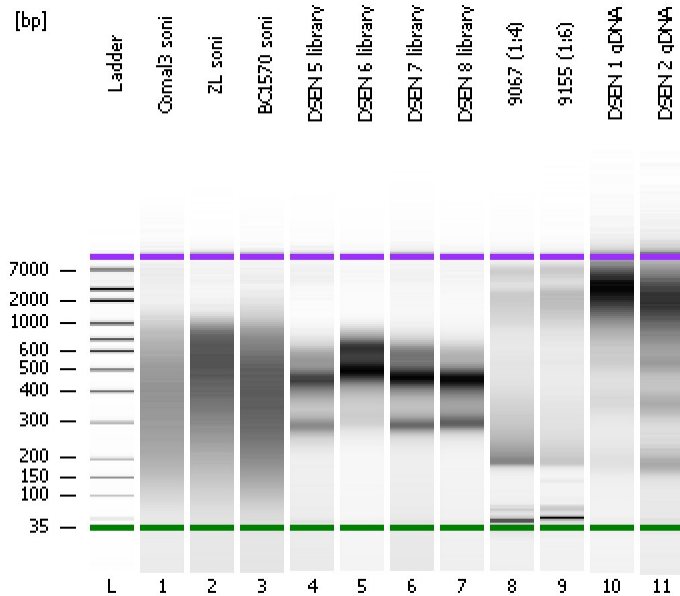


Assay Class: High Sensitivity DNA Assay
Data Path: C:\...ents and Settings\Bioanalyzer\2015-12-08\2015-12-08_002.xad

Created: 12/8/2015 2:14:24 PM
Modified: 12/8/2015 2:55:44 PM

Electrophoresis File Run Summary



Instrument Information:

Instrument Name: DE13701086 Firmware: C.01.069
Serial#: DE13701086 Type: G2938B

Assay Information:

Assay Origin Path: C:\Program Files\Agilent\2100 bioanalyzer\2100 expert\assays\dsDNA\High Sensitivity DNA.xsy
Assay Class: High Sensitivity DNA Assay
Version: 1.03
Assay Comments: Copyright © 2003-2010 Agilent Technologies

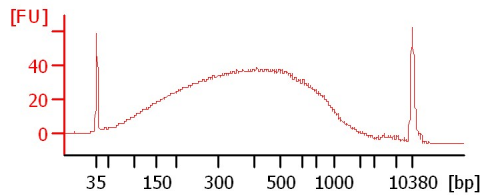
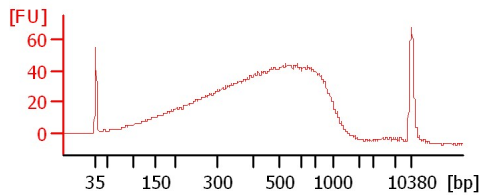
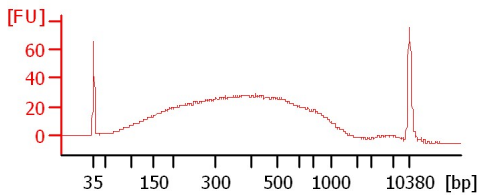
Chip Information:

Chip Lot #:
Reagent Kit Lot #:
Chip Comments:

Comal3 soni

ZL soni

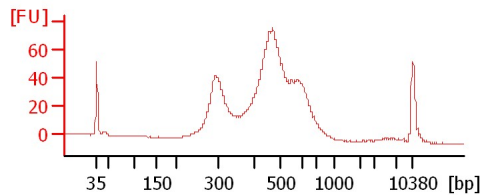
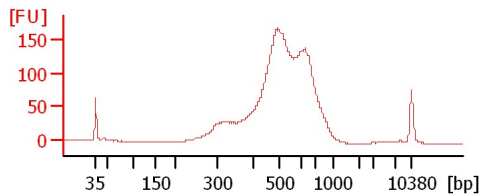
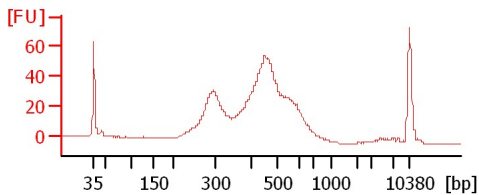
BC1570 soni



DSEN 5 library

DSEN 6 library

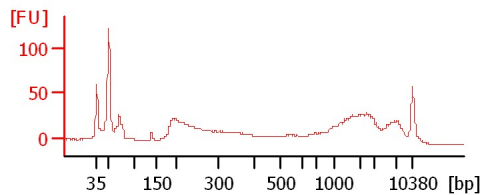
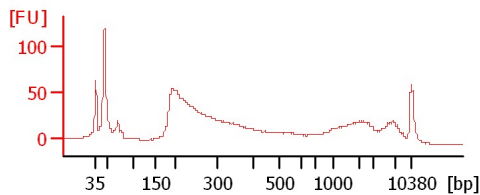
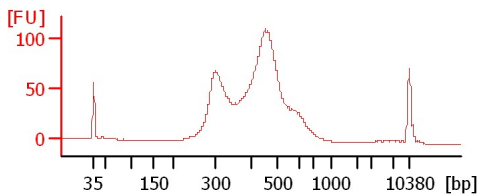
DSEN 7 library



DSEN 8 library

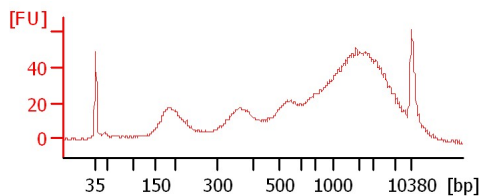
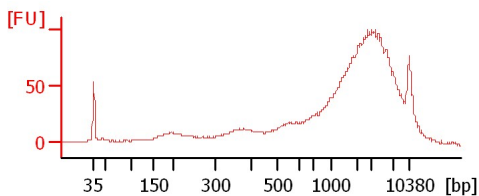
9067 (1:4)

9155 (1:6)



DSEN 1 qDNA

DSEN 2 qDNA



Assay Class: High Sensitivity DNA Assay
 Data Path: C:\...ents and Settings\Bioanalyzer\2015-12-08\2015-12-08_002.xad

Created: 12/8/2015 2:14:24 PM
 Modified: 12/8/2015 2:55:44 PM

Electrophoresis File Run Summary (Chip Summary)

Sample Name	Sample Comment	Rest. Digest	Status	Observation	Result Label	Result Color
Comal3 soni		<input type="checkbox"/>	✓			
ZL soni		<input type="checkbox"/>	✓			
BC1570 soni		<input type="checkbox"/>	✓			
DSEN 5 library		<input type="checkbox"/>	✓			
DSEN 6 library		<input type="checkbox"/>	✓			
DSEN 7 library		<input type="checkbox"/>	✓			
DSEN 8 library		<input type="checkbox"/>	✓			
9067 (1:4)		<input type="checkbox"/>	✓			
9155 (1:6)		<input type="checkbox"/>	✓			
DSEN 1 gDNA		<input type="checkbox"/>	✓			
DSEN 2 gDNA		<input type="checkbox"/>	✓			
Ladder		<input type="checkbox"/>	✓			

Chip Lot #

Reagent Kit Lot #

Chip Comments :

Assay Class: High Sensitivity DNA Assay
Data Path: C:\...ents and Settings\Bioanalyzer\2015-12-08\2015-12-08_002.xad

Created: 12/8/2015 2:14:24 PM
Modified: 12/8/2015 2:55:44 PM

Electrophoresis Assay Details

General Analysis Settings

Number of Available Sample and Ladder Wells (Max.) : 12
Minimum Visible Range [s] : 32
Maximum Visible Range [s] : 138
Start Analysis Time Range [s] : 33
End Analysis Time Range [s] : 137.5
Ladder Concentration [pg/μl] : 1950
Uses Standard Area for Ladder Fragments
Lower Marker Concentration [pg/μl] : 125
Upper Marker Concentration [pg/μl] : 75
Used Upper Marker for Quantitation
Standard Curve Fit is Point to Point
Show Data Aligned to Lower and Upper Marker

Integrator Settings

Integration Start Time [s] : 33.05
Integration End Time [s] : 137
Slope Threshold : 0.8
Height Threshold [FU] : 5
Area Threshold : 0.1
Width Threshold [s] : 0.6
Baseline Plateau [s] : 0.5

Filter Settings

Filter Width [s] : 0.5
Polynomial Order : 4

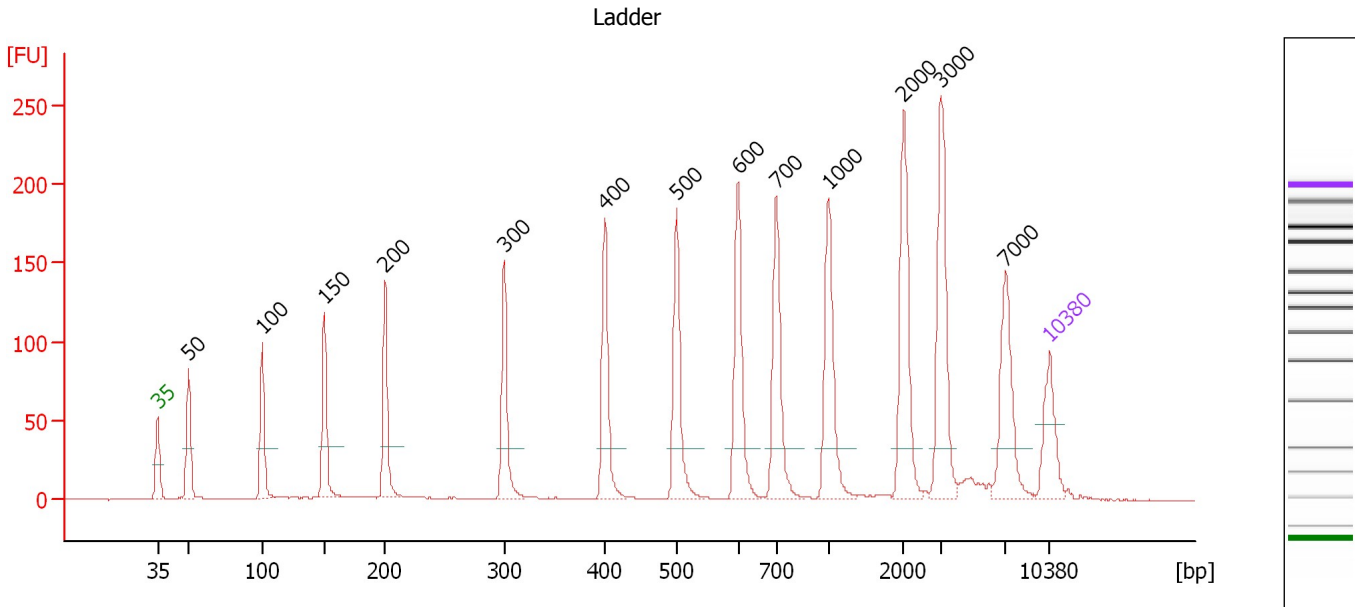
Ladder

Ladder Peak	Size	Area
1	35	160
2	50	210
3	100	208
4	150	221
5	200	242
6	300	270
7	400	305
8	500	306
9	600	336
10	700	321
11	1000	366
12	2000	413
13	3000	411
14	7000	400
15	10380	214

Assay Class: High Sensitivity DNA Assay
 Data Path: C:\...ents and Settings\Bioanalyzer\2015-12-08\2015-12-08_002.xad

Created: 12/8/2015 2:14:24 PM
 Modified: 12/8/2015 2:55:44 PM

Electropherogram Summary



Overall Results for Ladder

Noise: 0.2

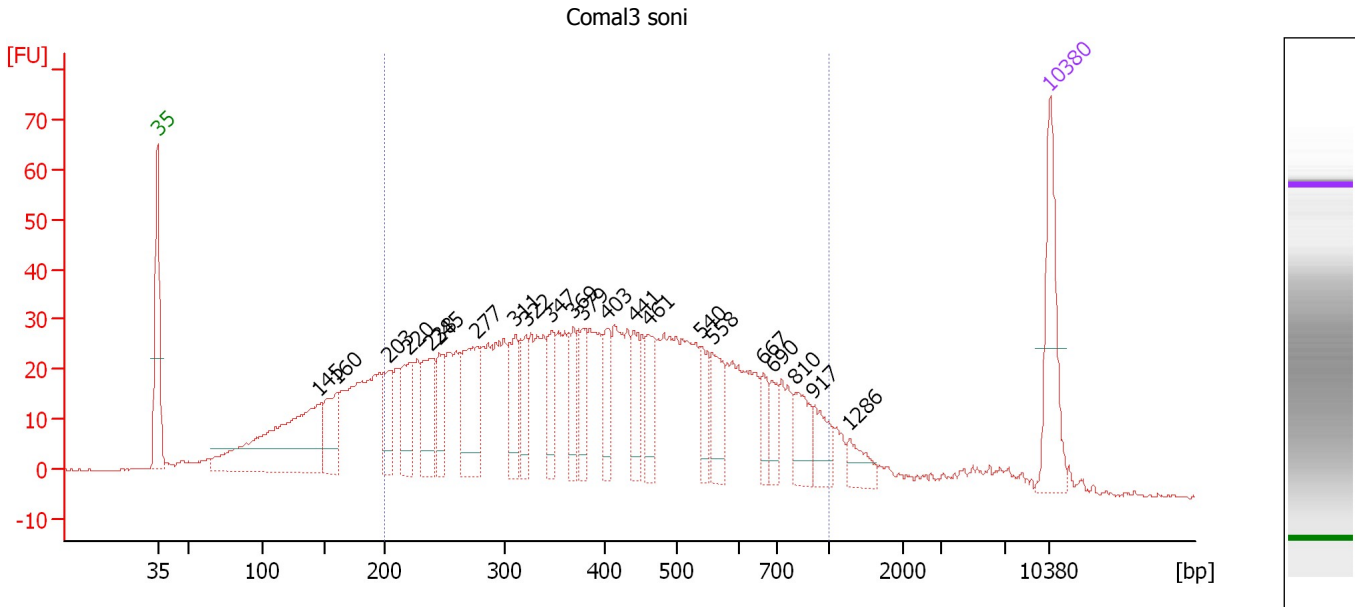
Peak table for Ladder

Peak	Size [bp]	Conc. [pg/μl]	Molarity [pmol/l]	Observations	Aligned Migration Time [s]
1	35	125.00	5,411.3	Lower Marker	43.00
2	50	150.00	4,545.5	Ladder Peak	45.45
3	100	150.00	2,272.7	Ladder Peak	51.21
4	150	150.00	1,515.2	Ladder Peak	56.10
5	200	150.00	1,136.4	Ladder Peak	60.86
6	300	150.00	757.6	Ladder Peak	70.18
7	400	150.00	568.2	Ladder Peak	78.07
8	500	150.00	454.5	Ladder Peak	83.70
9	600	150.00	378.8	Ladder Peak	88.54
10	700	150.00	324.7	Ladder Peak	91.54
11	1,000	150.00	227.3	Ladder Peak	95.60
12	2,000	150.00	113.6	Ladder Peak	101.51
13	3,000	150.00	75.8	Ladder Peak	104.46
14	7,000	150.00	32.5	Ladder Peak	109.49
15	10,380	75.00	10.9	Upper Marker	113.00

Assay Class: High Sensitivity DNA Assay
 Data Path: C:\...ents and Settings\Bioanalyzer\2015-12-08\2015-12-08_002.xad

Created: 12/8/2015 2:14:24 PM
 Modified: 12/8/2015 2:55:44 PM

Electropherogram Summary Continued ...



Overall Results for sample 1 : Comal3 soni

Number of peaks found: 22 Corr. Area 1: 1,196.2
 Noise: 0.2

Peak table for sample 1 : Comal3 soni

Peak	Size [bp]	Conc. [pg/μl]	Molarity [pmol/l]	Observations	Aligned Migration Time [s]
1	35	125.00	5,411.3	Lower Marker	43.00
2	145	270.98	2,832.2		55.61
3	160	72.78	688.7		57.07
4	203	47.64	356.3		61.10
5	220	71.25	490.3		62.74
6	238	78.25	498.6		64.38
7	245	49.55	306.0		65.08
8	277	103.71	567.2		68.04
9	311	57.89	282.1		71.04
10	322	41.54	195.7		71.88
11	347	40.49	176.7		73.90
12	369	39.23	161.0		75.63
13	379	44.91	179.7		76.38
14	403	39.84	150.0		78.21
15	441	46.08	158.4		80.37
16	461	44.95	147.8		81.49
17	540	30.85	86.6		85.62
18	558	48.86	132.7		86.51
19	667	24.58	55.9		90.54
20	690	22.04	48.4		91.25
21	810	41.85	78.3		93.03
22	917	31.78	52.5		94.48
23	1,286	21.98	25.9		97.29
24	10,380	75.00	10.9	Upper Marker	113.00

Assay Class: High Sensitivity DNA Assay
Data Path: C:\...ents and Settings\Bioanalyzer\2015-12-08\2015-12-08_002.xad

Created: 12/8/2015 2:14:24 PM
Modified: 12/8/2015 2:55:44 PM

Electropherogram Summary Continued ...

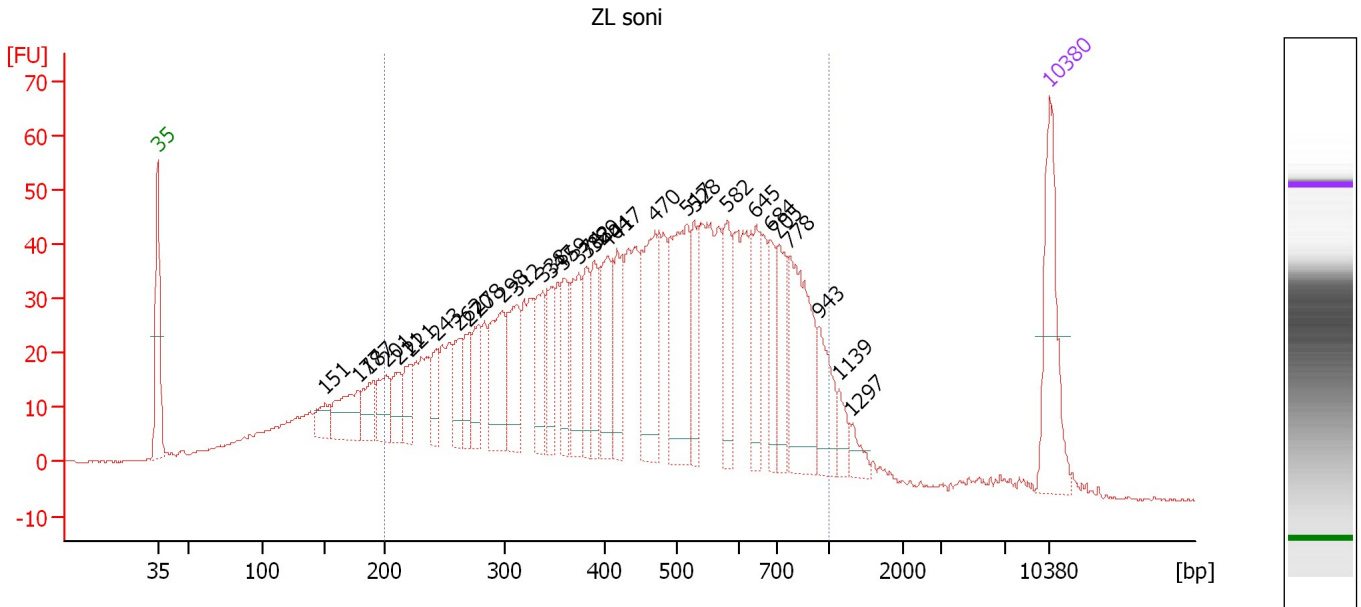
... Region table for sample 1 : Comal3 soni

From [bp]	To [bp]	Average Size [bp]	Corr. Area	Molarity [pmol/l]	Co Conc. lor [pg/μl]	% of Total	Size distribution in CV [%]
200	1,000	433	1,196.2	8,380.3	1,946.51	75	40.0

Assay Class: High Sensitivity DNA Assay
 Data Path: C:\...ents and Settings\Bioanalyzer\2015-12-08\2015-12-08_002.xad

Created: 12/8/2015 2:14:24 PM
 Modified: 12/8/2015 2:55:44 PM

Electropherogram Summary Continued ...



Overall Results for sample 2 : ZL soni

Number of peaks found: 31 Corr. Area 1: 1,612.9
 Noise: 0.2

Peak table for sample 2 : ZL soni

Peak	Size [bp]	Conc. [pg/μl]	Molarity [pmol/l]	Observations	Aligned Migration Time [s]
1	35	125.00	5,411.3	Lower Marker	43.00
2	151	24.25	243.9		56.17
3	177	56.88	486.4		58.69
4	187	35.30	285.9		59.62
5	201	40.63	306.6		60.93
6	211	30.77	220.7		61.91
7	221	31.81	218.2		62.80
8	243	27.90	174.1		64.85
9	262	32.86	190.1		66.63
10	270	33.91	190.4		67.38
11	278	43.20	235.1		68.17
12	298	79.78	405.0		70.04
13	312	63.52	308.1		71.16
14	338	43.38	194.2		73.21
15	347	41.50	181.3		73.87
16	359	45.39	191.5		74.85
17	374	59.64	241.6		76.02
18	382	39.81	158.0		76.62
19	389	46.68	181.6		77.23
20	404	68.79	257.9		78.30
21	417	50.93	184.8		79.05
22	470	99.31	320.3		81.99
23	517	122.35	358.7		84.51
24	528	43.76	125.5		85.07
25	582	52.95	137.8		87.69

Assay Class: High Sensitivity DNA Assay
 Data Path: C:\...ents and Settings\Bioanalyzer\2015-12-08\2015-12-08_002.xad

Created: 12/8/2015 2:14:24 PM
 Modified: 12/8/2015 2:55:44 PM

Electropherogram Summary Continued ...

... Peak table for sample 2 : ZL soni

Peak	Size [bp]	Conc. [pg/ μ l]	Molarity [pmol/l]	Observations	Aligned Migration Time [s]
26	645	51.60	121.3		89.88
27	684	37.78	83.7		91.05
28	705	50.78	109.1		91.61
29	778	112.22	218.7		92.59
30	943	44.00	70.7		94.83
31	1,139	15.60	20.8		96.42
32	1,297	11.91	13.9		97.36
33	10,380	75.00	10.9	Upper Marker	113.00

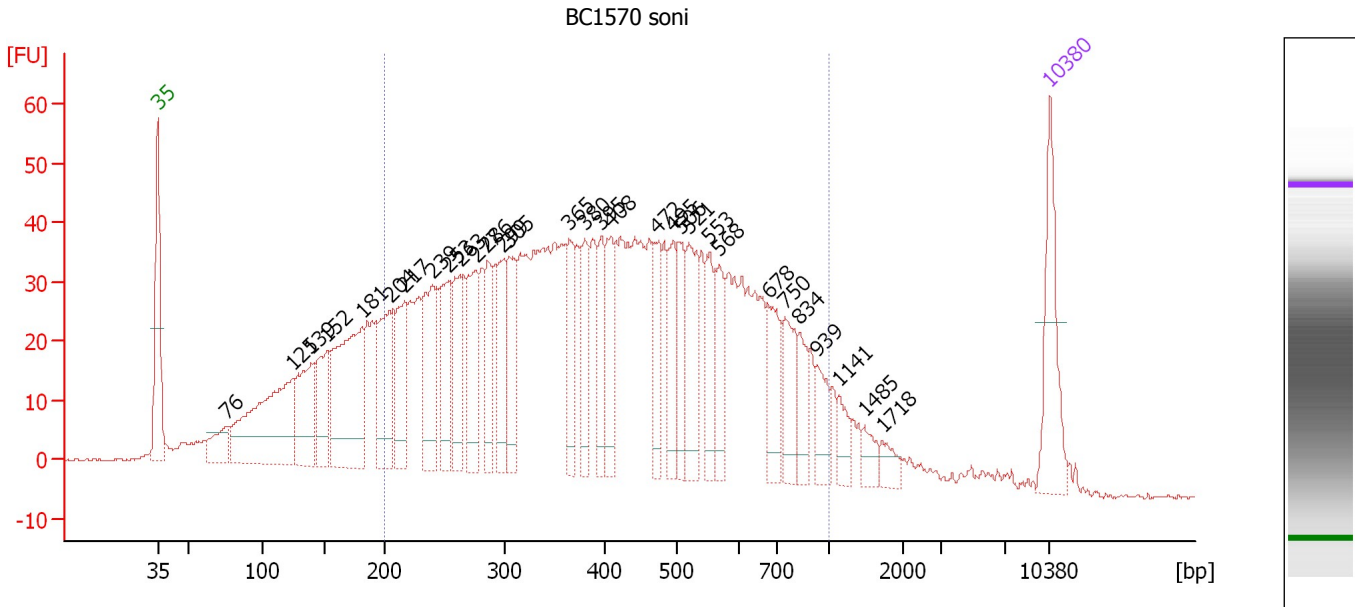
Region table for sample 2 : ZL soni

From [bp]	To [bp]	Average Size [bp]	Corr. Area	Molarity [pmol/l]	Co Conc. lor [pg/ μ l]	% of Total	Size distribution in CV [%]
200	1,000	479	1,612.9	9,113.2	2,327.94	82	37.9

Assay Class: High Sensitivity DNA Assay
 Data Path: C:\...ents and Settings\Bioanalyzer\2015-12-08\2015-12-08_002.xad

Created: 12/8/2015 2:14:24 PM
 Modified: 12/8/2015 2:55:44 PM

Electropherogram Summary Continued ...



Overall Results for sample 3 : BC1570 soni

Number of peaks found: 31 Corr. Area 1: 1,584.8
 Noise: 0.2

Peak table for sample 3 : BC1570 soni

Peak	Size [bp]	Conc. [pg/μl]	Molarity [pmol/l]	Observations	Aligned Migration Time [s]
1	35	125.00	5,411.3	Lower Marker	43.00
2	76	49.90	1,000.4		48.40
3	125	253.06	3,069.9		53.65
4	139	112.21	1,219.5		55.07
5	152	89.85	898.3		56.25
6	181	227.72	1,907.0		59.04
7	204	126.76	941.9		61.22
8	217	89.04	622.9		62.41
9	239	116.52	737.3		64.53
10	253	92.98	556.5		65.81
11	263	88.62	510.9		66.71
12	277	92.93	509.2		67.99
13	286	64.91	343.7		68.89
14	299	73.89	374.0		70.12
15	305	78.94	391.8		70.59
16	365	69.63	289.3		75.28
17	380	58.32	232.4		76.51
18	395	57.02	218.6		77.69
19	408	65.33	242.3		78.54
20	472	53.51	171.7		82.14
21	495	60.16	184.1		83.42
22	506	59.71	178.8		83.99
23	521	87.82	255.6		84.70
24	553	52.14	142.9		86.26
25	568	55.35	147.5		87.02

Assay Class: High Sensitivity DNA Assay
 Data Path: C:\...ents and Settings\Bioanalyzer\2015-12-08\2015-12-08_002.xad

Created: 12/8/2015 2:14:24 PM
 Modified: 12/8/2015 2:55:44 PM

Electropherogram Summary Continued ...

... Peak table for sample 3 : BC1570 soni

Peak	Size [bp]	Conc. [pg/ μ l]	Molarity [pmol/l]	Observations	Aligned Migration Time [s]
26	678	58.70	131.1		90.90
27	750	57.01	115.1		92.22
28	834	33.49	60.8		93.36
29	939	33.91	54.7		94.78
30	1,141	21.14	28.1		96.43
31	1,485	16.85	17.2		98.47
32	1,718	15.03	13.3		99.84
33	10,380	75.00	10.9	Upper Marker	113.00

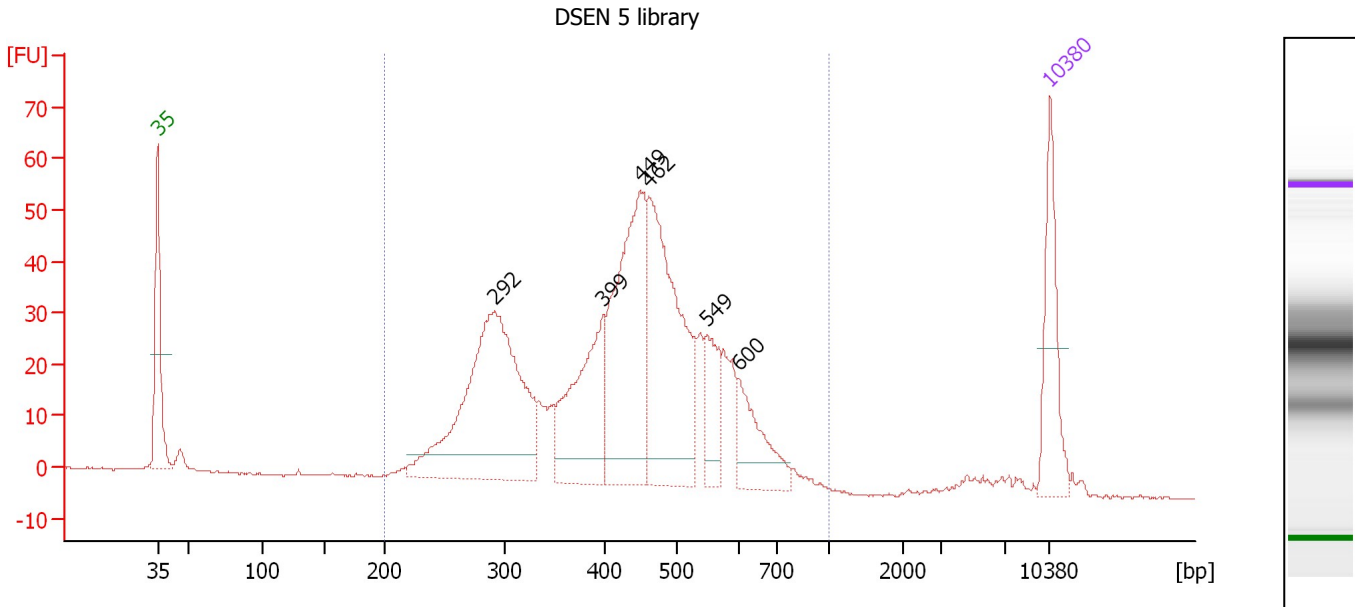
Region table for sample 3 : BC1570 soni

From [bp]	To [bp]	Average Size [bp]	Corr. Area	Molarity [pmol/l]	Co Conc. lor [pg/ μ l]	% of Total	Size distribution in CV [%]
200	1,000	437	1,584.8	12,603.2	2,953.17	75	39.6

Assay Class: High Sensitivity DNA Assay
 Data Path: C:\...ents and Settings\Bioanalyzer\2015-12-08\2015-12-08_002.xad

Created: 12/8/2015 2:14:24 PM
 Modified: 12/8/2015 2:55:44 PM

Electropherogram Summary Continued ...



Overall Results for sample 4 : DSEN 5 library

Number of peaks found: 6 Corr. Area 1: 933.8
 Noise: 0.2

Peak table for sample 4 : DSEN 5 library

Peak	Size [bp]	Conc. [pg/μl]	Molarity [pmol/l]	Observations	Aligned Migration Time [s]
1	35	125.00	5,411.3	Lower Marker	43.00
2	292	417.85	2,169.4		69.42
3	399	173.46	659.5		77.95
4	449	276.66	933.6		80.83
5	462	281.71	924.3		81.55
6	549	58.31	161.0		86.05
7	600	73.34	185.2		88.55
8	10,380	75.00	10.9	Upper Marker	113.00

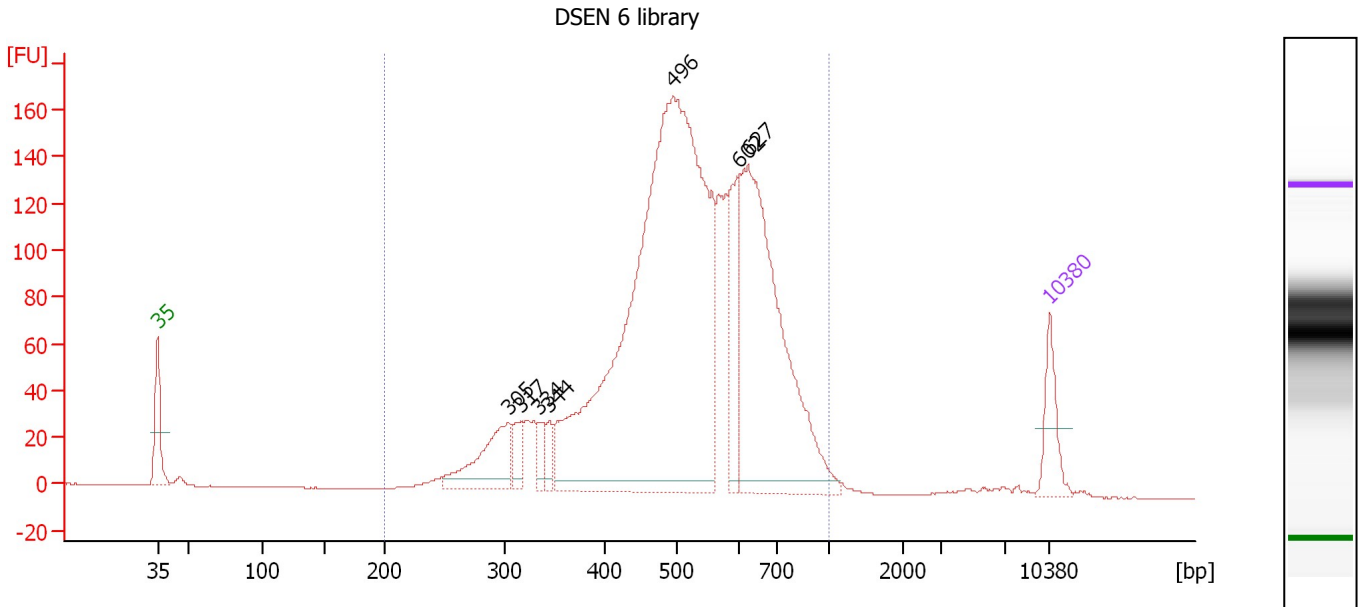
Region table for sample 4 : DSEN 5 library

From [bp]	To [bp]	Average Size [bp]	Corr. Area	Molarity [pmol/l]	Co Conc. lor [pg/μl]	% of Total	Size distribution in CV [%]
200	1,000	433	933.8	5,559.2	1,428.19	97	26.3

Assay Class: High Sensitivity DNA Assay
 Data Path: C:\...ents and Settings\Bioanalyzer\2015-12-08\2015-12-08_002.xad

Created: 12/8/2015 2:14:24 PM
 Modified: 12/8/2015 2:55:44 PM

Electropherogram Summary Continued ...



Overall Results for sample 5 : DSEN 6 library

Number of peaks found: 7 Corr. Area 1: 2,592.9
 Noise: 0.2

Peak table for sample 5 : DSEN 6 library

Peak	Size [bp]	Conc. [pg/μl]	Molarity [pmol/l]	Observations	Aligned Migration Time [s]
1	35	125.00	5,411.3	Lower Marker	43.00
2	305	201.96	1,004.2		70.55
3	317	49.67	237.3		71.53
4	334	41.34	187.7		72.84
5	344	40.52	178.4		73.67
6	496	2,169.28	6,631.7		83.45
7	602	191.84	482.6		88.61
8	627	827.09	1,999.9		89.34
9	10,380	75.00	10.9	Upper Marker	113.00

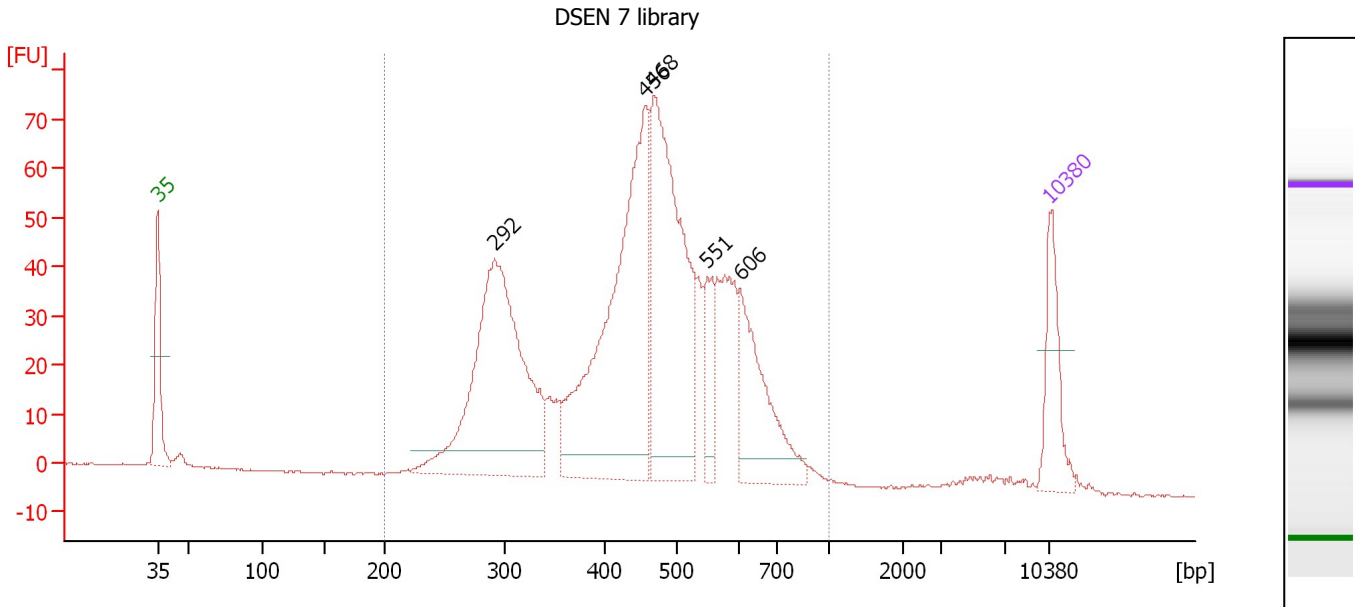
Region table for sample 5 : DSEN 6 library

From [bp]	To [bp]	Average Size [bp]	Corr. Area	Molarity [pmol/l]	Co Conc. [pg/μl]	% of Total	Size distribution in CV [%]
200	1,000	528	2,592.9	12,184.7	3,862.20	98	24.7

Assay Class: High Sensitivity DNA Assay
 Data Path: C:\...ents and Settings\Bioanalyzer\2015-12-08\2015-12-08_002.xad

Created: 12/8/2015 2:14:24 PM
 Modified: 12/8/2015 2:55:44 PM

Electropherogram Summary Continued ...



Overall Results for sample 6 : DSEN 7 library

Number of peaks found: 5 Corr. Area 1: 1,194.1
 Noise: 0.1

Peak table for sample 6 : DSEN 7 library

Peak	Size [bp]	Conc. [pg/μl]	Molarity [pmol/l]	Observations	Aligned Migration Time [s]
1	35	125.00	5,411.3	Lower Marker	43.00
2	292	580.96	3,012.3		69.45
3	456	573.04	1,903.7		81.23
4	468	467.46	1,512.3		81.92
5	551	67.23	185.0		86.15
6	606	175.50	439.0		88.71
7	10,380	75.00	10.9	Upper Marker	113.00

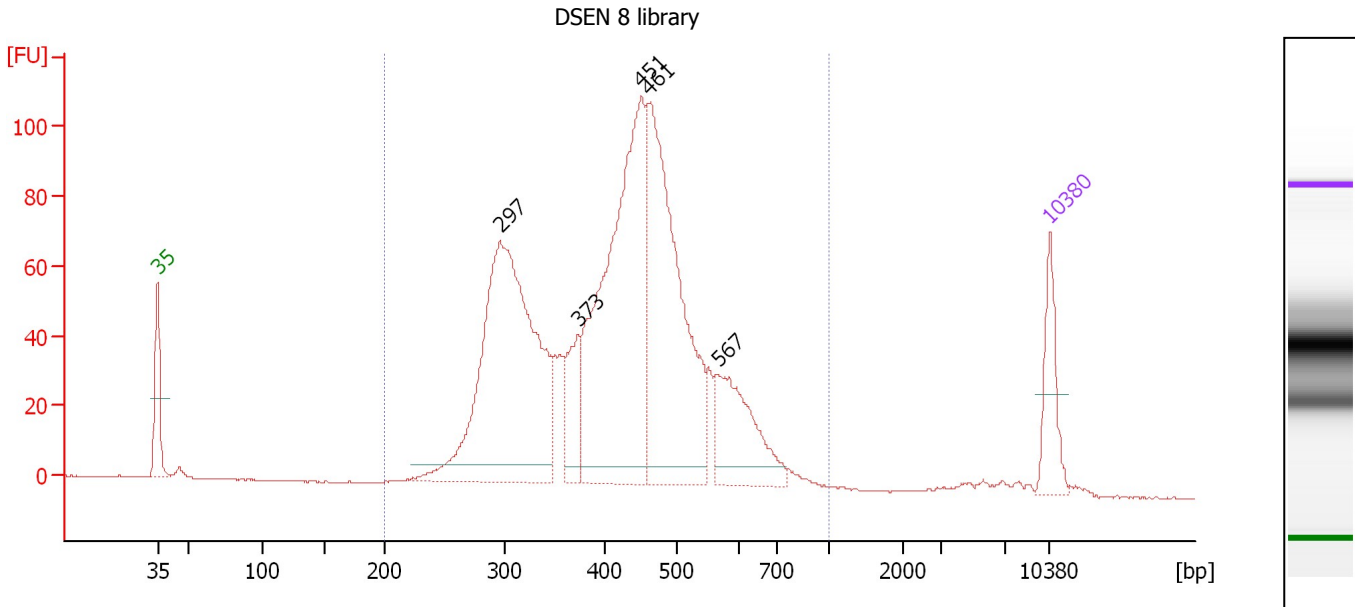
Region table for sample 6 : DSEN 7 library

From [bp]	To [bp]	Average Size [bp]	Corr. Area	Molarity [pmol/l]	Co Conc. lor [pg/μl]	% of Total	Size distribution in CV [%]
200	1,000	457	1,194.1	7,952.9	2,152.10	97	26.4

Assay Class: High Sensitivity DNA Assay
 Data Path: C:\...ents and Settings\Bioanalyzer\2015-12-08\2015-12-08_002.xad

Created: 12/8/2015 2:14:24 PM
 Modified: 12/8/2015 2:55:44 PM

Electropherogram Summary Continued ...



Overall Results for sample 7 : DSEN 8 library

Number of peaks found: 5 Corr. Area 1: 1,657.5
 Noise: 0.1

Peak table for sample 7 : DSEN 8 library

Peak	Size [bp]	Conc. [pg/μl]	Molarity [pmol/l]	Observations	Aligned Migration Time [s]
1	35	125.00	5,411.3	Lower Marker	43.00
2	297	854.08	4,360.0		69.88
3	373	107.53	436.2		75.98
4	451	727.50	2,445.7		80.92
5	461	613.82	2,015.9		81.52
6	567	187.63	501.0		86.97
7	10,380	75.00	10.9	Upper Marker	113.00

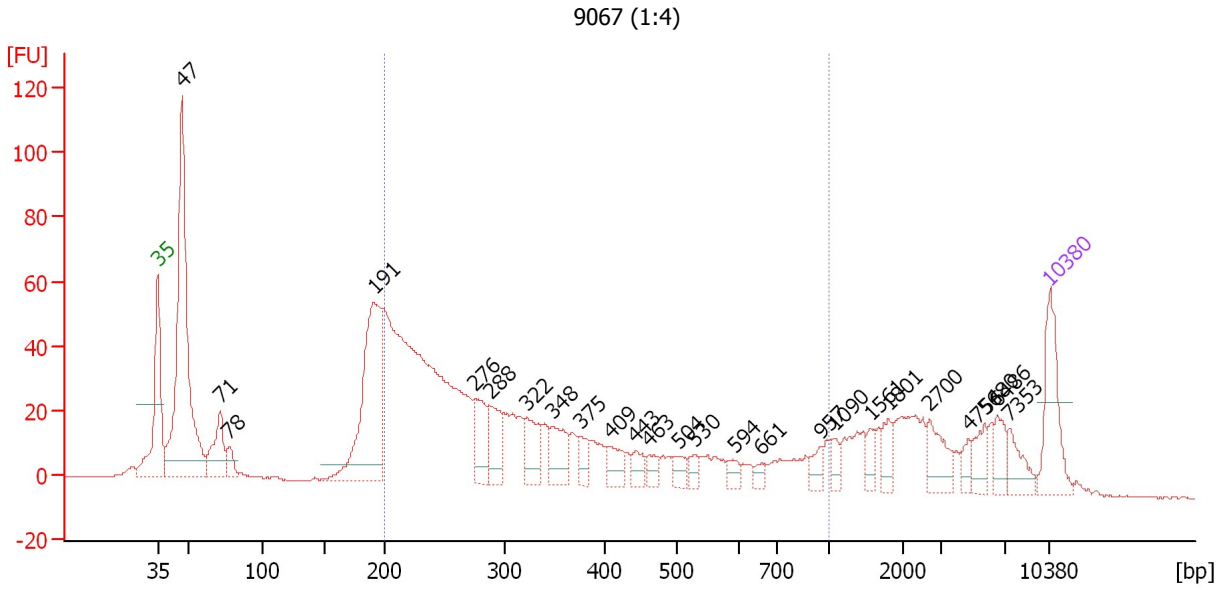
Region table for sample 7 : DSEN 8 library

From [bp]	To [bp]	Average Size [bp]	Corr. Area	Molarity [pmol/l]	Co Conc. lor [pg/μl]	% of Total	Size distribution in CV [%]
200	1,000	427	1,657.5	10,229.1	2,647.73	98	24.6

Assay Class: High Sensitivity DNA Assay
 Data Path: C:\...ents and Settings\Bioanalyzer\2015-12-08\2015-12-08_002.xad

Created: 12/8/2015 2:14:24 PM
 Modified: 12/8/2015 2:55:44 PM

Electropherogram Summary Continued ...



Overall Results for sample 8 : 9067 (1:4)

Number of peaks found: 25 Corr. Area 1: 863.1
 Noise: 0.2

Peak table for sample 8 : 9067 (1:4)

Peak	Size [bp]	Conc. [pg/μl]	Molarity [pmol/l]	Observations	Aligned Migration Time [s]
1	35	125.00	5,411.3	Lower Marker	43.00
2	47	575.44	18,627.8		44.92
3	71	90.59	1,922.7		47.91
4	78	28.53	557.5		48.62
5	191	316.18	2,512.9		59.97
6	276	75.70	415.9		67.92
7	288	63.96	336.2		69.09
8	322	59.71	280.9		71.92
9	348	61.17	266.5		73.95
10	375	27.15	109.6		76.13
11	409	31.98	118.6		78.56
12	443	22.56	77.2		80.48
13	463	18.95	62.0		81.60
14	504	17.97	54.1		83.88
15	530	12.64	36.1		85.14
16	594	15.55	39.7		88.23
17	661	11.48	26.3		90.36
18	957	16.13	25.5		95.02
19	1,090	14.99	20.8		96.13
20	1,561	16.70	16.2		98.92
21	1,801	24.31	20.4		100.34
22	2,700	40.66	22.8		103.58
23	4,754	15.40	4.9		106.67
24	5,686	26.53	7.1		107.83
25	6,486	27.33	6.4		108.85

Assay Class: High Sensitivity DNA Assay
 Data Path: C:\...ents and Settings\Bioanalyzer\2015-12-08\2015-12-08_002.xad

Created: 12/8/2015 2:14:24 PM
 Modified: 12/8/2015 2:55:44 PM

Electropherogram Summary Continued ...

... Peak table for sample 8 : 9067 (1:4)

Peak	Size [bp]	Conc. [pg/ μ l]	Molarity [pmol/l]	Observations	Aligned Migration Time [s]
26	7,353	29.04	6.0		109.86
27	10,380	75.00	10.9	Upper Marker	113.00

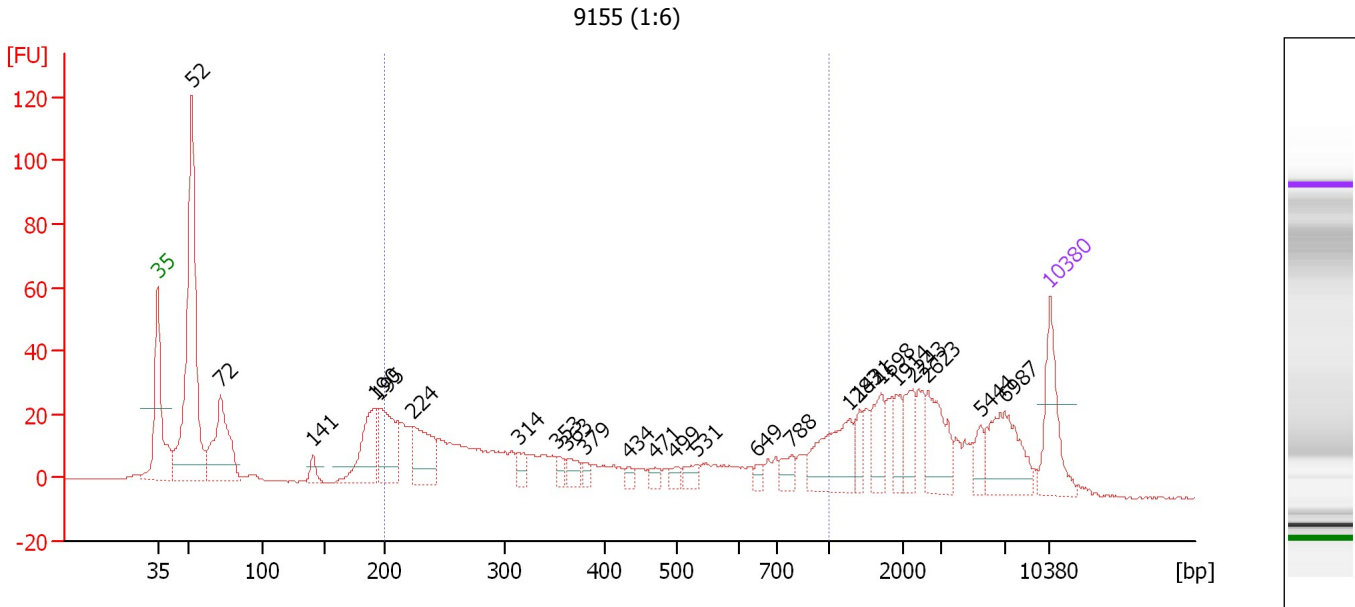
Region table for sample 8 : 9067 (1:4)

From [bp]	To [bp]	Average Size [bp]	Corr. Area	Molarity [pmol/l]	Co Conc. lor [pg/ μ l]	% of Total	Size distribution in CV [%]
200	1,000	364	863.1	7,906.9	1,522.96	52	49.2

Assay Class: High Sensitivity DNA Assay
 Data Path: C:\...ents and Settings\Bioanalyzer\2015-12-08\2015-12-08_002.xad

Created: 12/8/2015 2:14:24 PM
 Modified: 12/8/2015 2:55:44 PM

Electropherogram Summary Continued ...



Overall Results for sample 9 : 9155 (1:6)

Number of peaks found: 24 Corr. Area 1: 465.2
 Noise: 0.2

Peak table for sample 9 : 9155 (1:6)

Peak	Size [bp]	Conc. [pg/μl]	Molarity [pmol/l]	Observations	Aligned Migration Time [s]
1	35	125.00	5,411.3	Lower Marker	43.00
2	52	550.61	15,964.3		45.71
3	72	188.83	3,988.6		47.95
4	141	18.92	203.6		55.20
5	190	109.96	874.7		59.95
6	195	121.67	943.9		60.41
7	224	103.62	701.8		63.07
8	314	20.70	99.9		71.29
9	353	14.67	63.0		74.35
10	363	22.19	92.6		75.17
11	379	12.47	49.8		76.44
12	434	9.48	33.1		79.97
13	471	13.22	42.5		82.06
14	499	12.42	37.7		83.64
15	531	19.38	55.2		85.22
16	649	10.02	23.4		90.02
17	788	21.49	41.3		92.73
18	1,283	93.37	110.3		97.27
19	1,421	22.19	23.7		98.09
20	1,698	44.18	39.4		99.73
21	1,914	27.51	21.8		101.00
22	2,243	41.85	28.3		102.23
23	2,623	72.08	41.6		103.35
24	5,444	21.26	5.9		107.54
25	6,987	90.78	19.7		109.48

Assay Class: High Sensitivity DNA Assay
Data Path: C:\...ents and Settings\Bioanalyzer\2015-12-08\2015-12-08_002.xad

Created: 12/8/2015 2:14:24 PM
Modified: 12/8/2015 2:55:44 PM

Electropherogram Summary Continued ...**... Peak table for sample 9 : 9155 (1:6)**

Peak	Size [bp]	Conc. [pg/ μ l]	Molarity [pmol/l]	Observations	Aligned Migration Time [s]
26	10,380	75.00	10.9	Upper Marker	113.00

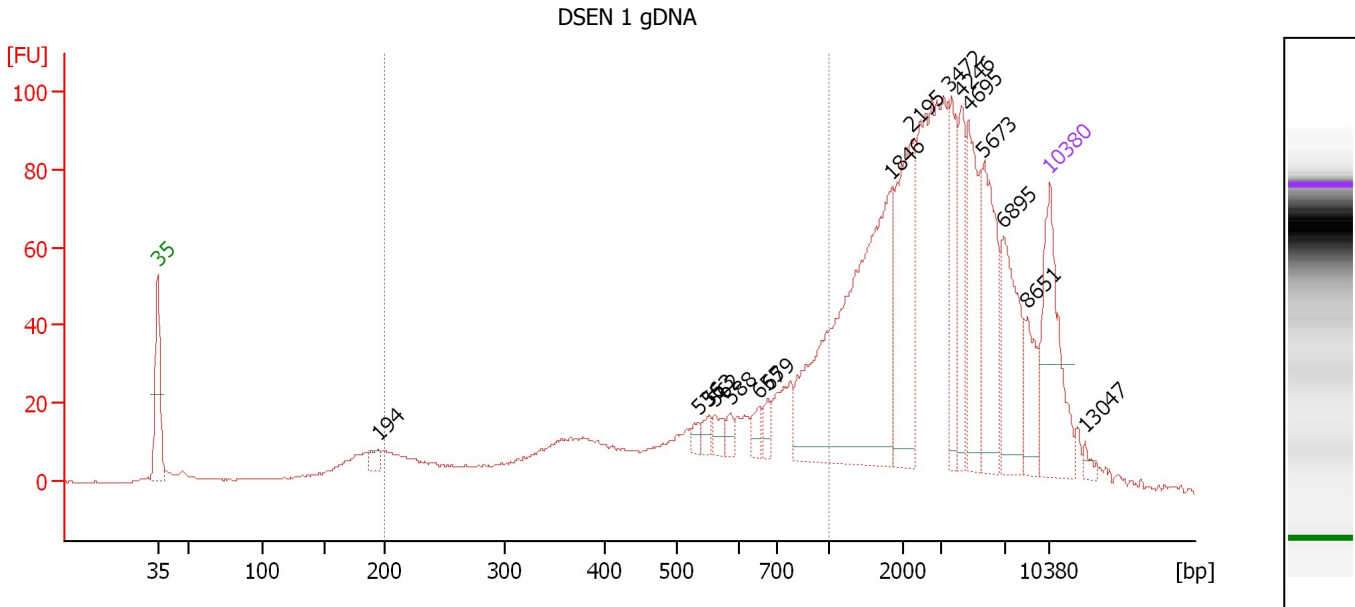
Region table for sample 9 : 9155 (1:6)

From [bp]	To [bp]	Average Size [bp]	Corr. Area	Molarity [pmol/l]	Co Conc. lor [pg/ μ l]	% of Total	Size distribution in CV [%]
200	1,000	431	465.2	4,107.3	863.97	38	51.1

Assay Class: High Sensitivity DNA Assay
 Data Path: C:\...ents and Settings\Bioanalyzer\2015-12-08\2015-12-08_002.xad

Created: 12/8/2015 2:14:24 PM
 Modified: 12/8/2015 2:55:44 PM

Electropherogram Summary Continued ...



Overall Results for sample 10 : DSEN 1 gDNA

Number of peaks found: 16 Corr. Area 1: 564.7
 Noise: 0.2

Peak table for sample 10 : DSEN 1 gDNA

Peak	Size [bp]	Conc. [pg/μl]	Molarity [pmol/l]	Observations	Aligned Migration Time [s]
1	35	125.00	5,411.3	Lower Marker	43.00
2	194	11.30	88.4		60.27
3	536	7.17	20.3		85.43
4	553	8.50	23.3		86.25
5	562	10.02	27.0		86.71
6	588	8.44	21.8		87.94
7	655	11.88	27.5		90.20
8	679	11.11	24.8		90.91
9	1,846	260.61	213.9		100.60
10	2,195	103.07	71.2		102.08
11	3,472	49.33	21.5		105.06
12	4,246	44.47	15.9		106.03
13	4,695	68.08	22.0		106.59
14	5,673	77.42	20.7		107.82
15	6,895	68.77	15.1		109.36
16	8,651	28.54	5.0		111.21
17	10,380	75.00	10.9	Upper Marker	113.00
18	13,047	0.00	0.0		115.77

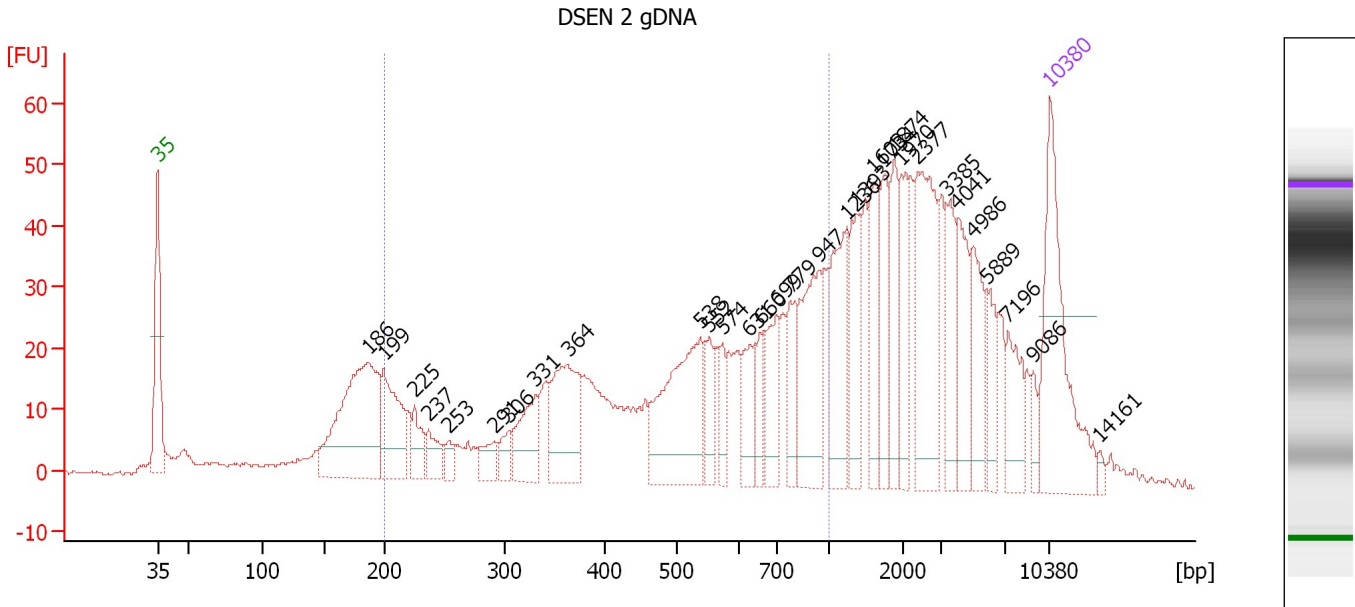
Region table for sample 10 : DSEN 1 gDNA

From [bp]	To [bp]	Average Size [bp]	Corr. Area	Molarity [pmol/l]	Co Conc. [pg/μl]	% of Total	Size distribution in CV [%]
200	1,000	565	564.7	2,079.6	592.78	31	39.2

Assay Class: High Sensitivity DNA Assay
 Data Path: C:\...ents and Settings\Bioanalyzer\2015-12-08\2015-12-08_002.xad

Created: 12/8/2015 2:14:24 PM
 Modified: 12/8/2015 2:55:44 PM

Electropherogram Summary Continued ...



Overall Results for sample 11 : DSEN 2 gDNA

Number of peaks found: 31 Corr. Area 1: 687.8
 Noise: 0.5

Peak table for sample 11 : DSEN 2 gDNA

Peak	Size [bp]	Conc. [pg/μl]	Molarity [pmol/l]	Observations	Aligned Migration Time [s]
1	35	125.00	5,411.3	Lower Marker	43.00
2	186	142.73	1,159.8		59.57
3	199	59.27	451.4		60.76
4	225	19.99	134.6		63.18
5	237	16.11	103.1		64.27
6	253	8.13	48.7		65.82
7	291	14.81	77.0		69.38
8	306	11.93	59.2		70.62
9	331	36.36	166.4		72.63
10	364	66.99	279.0		75.21
11	538	94.08	265.0		85.54
12	552	20.63	56.6		86.21
13	574	16.61	43.8		87.29
14	631	26.11	62.7		89.46
15	660	17.51	40.2		90.34
16	699	33.97	73.6		91.53
17	779	23.69	46.1		92.61
18	947	60.24	96.4		94.88
19	1,236	53.02	65.0		97.00
20	1,393	34.38	37.4		97.93
21	1,603	30.85	29.2		99.17
22	1,734	28.87	25.2		99.94
23	1,874	33.15	26.8		100.77
24	1,970	26.18	20.1		101.33
25	2,377	70.22	44.8		102.62

Assay Class: High Sensitivity DNA Assay
 Data Path: C:\...ents and Settings\Bioanalyzer\2015-12-08\2015-12-08_002.xad

Created: 12/8/2015 2:14:24 PM
 Modified: 12/8/2015 2:55:44 PM

Electropherogram Summary Continued ...

... Peak table for sample 11 : DSEN 2 gDNA

Peak	Size [bp]	Conc. [pg/μl]	Molarity [pmol/l]	Observations	Aligned Migration Time [s]
26	3,385	28.03	12.5		104.95
27	4,041	33.42	12.5		105.77
28	4,986	29.49	9.0		106.96
29	5,889	19.81	5.1		108.10
30	7,196	25.41	5.3		109.70
31	9,086	8.29	1.4		111.66
32	10,380	75.00	10.9	Upper Marker	113.00
33	14,161	0.00	0.0		116.92

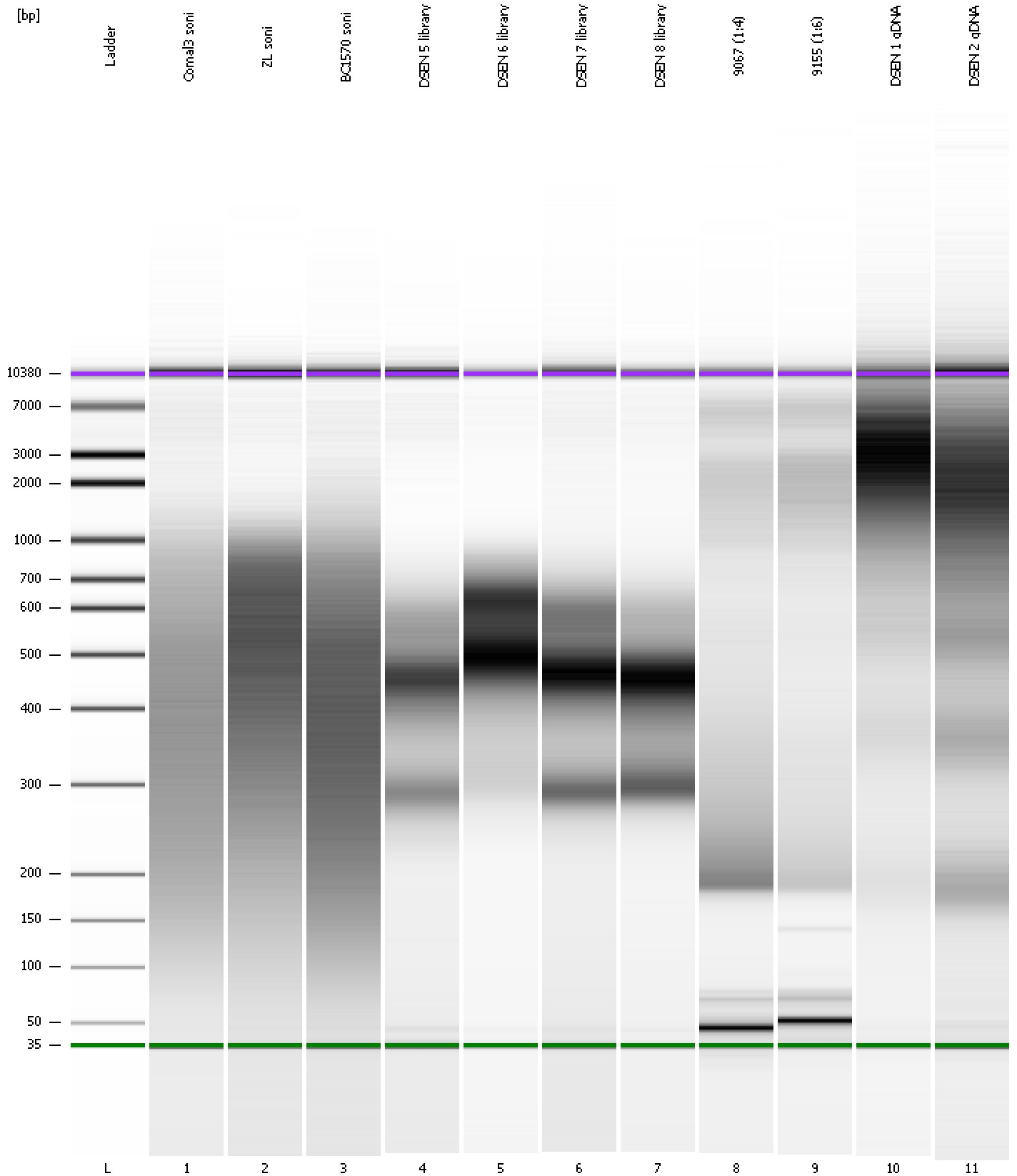
Region table for sample 11 : DSEN 2 gDNA

From [bp]	To [bp]	Average Size [bp]	Corr. Area	Molarity [pmol/l]	Co Conc. lor [pg/μl]	% of Total	Size distribution in CV [%]
200	1,000	539	687.8	2,671.9	730.91	45	39.7

Assay Class: High Sensitivity DNA Assay
Data Path: C:\...ents and Settings\Bioanalyzer\2015-12-08\2015-12-08_002.xad

Created: 12/8/2015 2:14:24 PM
Modified: 12/8/2015 2:55:44 PM

Gel Image



Assay Class: High Sensitivity DNA Assay
 Data Path: C:\...ents and Settings\Bioanalyzer\2015-12-08\2015-12-08_002.xad

Created: 12/8/2015 2:14:24 PM
 Modified: 12/8/2015 2:55:44 PM

Run Logbook

Description	Number	Source	Category	Sub Category	Time	Time Zone	User	Host
Run ended on port 1 (Number of wells acquired: 12)		Instrument	Run		12/8/2015 2:55:44 PM	(GMT --08:00) Pacific Standard Time	UC Davis	D8XSMGH1
Run started on port 1 (File: C:\Documents and Settings\Bioanalyzer\2015-12-08\2015-12-08_002.xad)		Instrument	Run		12/8/2015 2:14:30 PM	(GMT --08:00) Pacific Standard Time	UC Davis	D8XSMGH1
Product Number : G2938B		Instrument	Run		12/8/2015 2:14:30 PM	(GMT --08:00) Pacific Standard Time	UC Davis	D8XSMGH1
Name :		Instrument	Run		12/8/2015 2:14:30 PM	(GMT --08:00) Pacific Standard Time	UC Davis	D8XSMGH1
Vendor : Agilent Technologies		Instrument	Run		12/8/2015 2:14:30 PM	(GMT --08:00) Pacific Standard Time	UC Davis	D8XSMGH1
Serial# : DE13701086		Instrument	Run		12/8/2015 2:14:30 PM	(GMT --08:00) Pacific Standard Time	UC Davis	D8XSMGH1
Firmware : C.01.069		Instrument	Run		12/8/2015 2:14:30 PM	(GMT --08:00) Pacific Standard Time	UC Davis	D8XSMGH1
Cartridge : Electrode		Instrument	Run		12/8/2015 2:14:30 PM	(GMT --08:00) Pacific Standard Time	UC Davis	D8XSMGH1