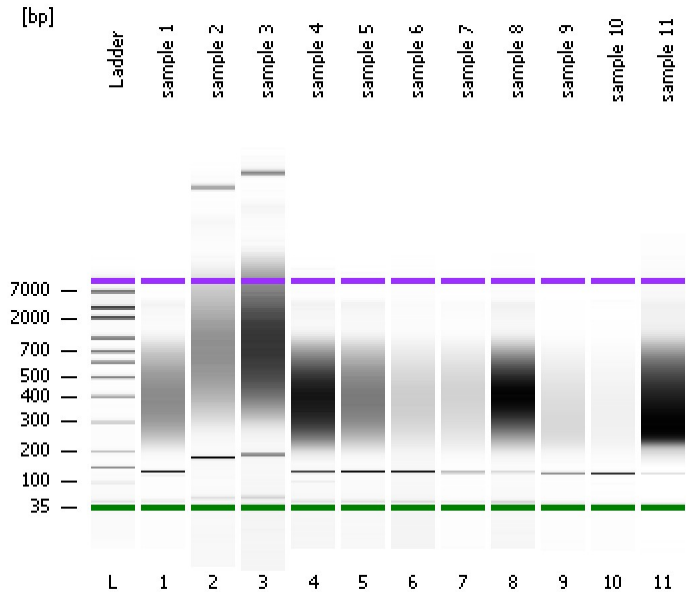


Assay Class: High Sensitivity DNA Assay
Data Path: C:\...ents and Settings\Bioanalyzer\2015-12-14\2015-12-14_003.xad

Created: 12/14/2015 2:47:31 PM
Modified: 12/14/2015 3:28:50 PM

Electrophoresis File Run Summary



Instrument Information:

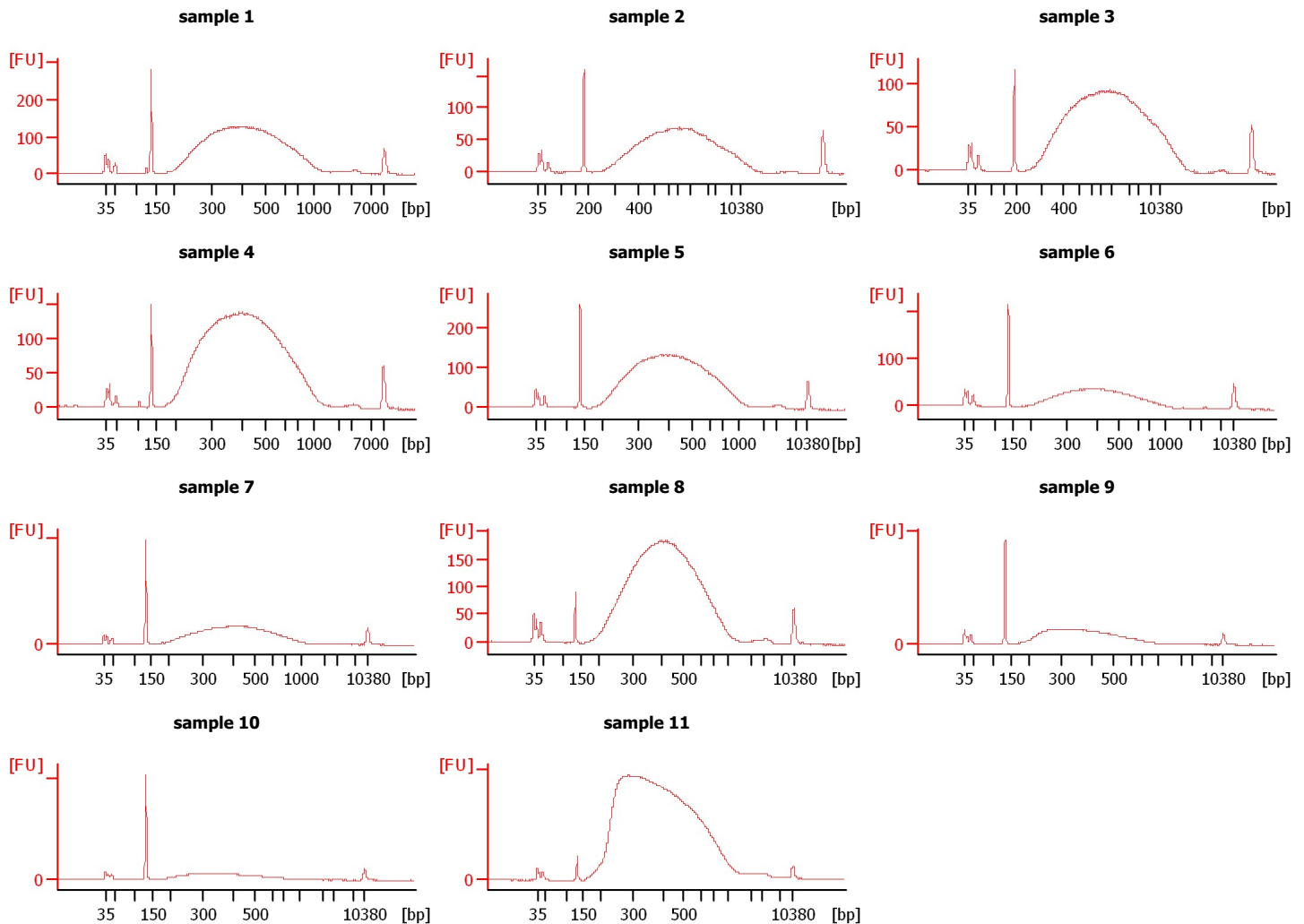
Instrument Name: DE13701086 Firmware: C.01.069
Serial#: DE13701086 Type: G2938B

Assay Information:

Assay Origin Path: C:\Program Files\Agilent\2100 bioanalyzer\2100 expert\assays\dsDNA\High Sensitivity DNA.xsy
Assay Class: High Sensitivity DNA Assay
Version: 1.03
Assay Comments: Copyright © 2003-2010 Agilent Technologies

Chip Information:

Chip Lot #: Reagent Kit Lot #: Chip Comments:



Assay Class: High Sensitivity DNA Assay
 Data Path: C:\...ents and Settings\Bioanalyzer\2015-12-14\2015-12-14_003.xad

Created: 12/14/2015 2:47:31 PM
 Modified: 12/14/2015 3:28:50 PM

Electrophoresis File Run Summary (Chip Summary)

Sample Name	Sample Comment	Rest. Digest	Status	Observation	Result Label	Result Color
sample 1		<input type="checkbox"/>	✓			
sample 2		<input type="checkbox"/>	✓			
sample 3		<input type="checkbox"/>	✓			
sample 4		<input type="checkbox"/>	✓			
sample 5		<input type="checkbox"/>	✓			
sample 6		<input type="checkbox"/>	✓			
sample 7		<input type="checkbox"/>	✓			
sample 8		<input type="checkbox"/>	✓			
sample 9		<input type="checkbox"/>	✓			
sample 10		<input type="checkbox"/>	✓			
sample 11		<input type="checkbox"/>	✓			
Ladder		<input type="checkbox"/>	✓			

Chip Lot #

Reagent Kit Lot #

Chip Comments :

Assay Class: High Sensitivity DNA Assay
 Data Path: C:\...ents and Settings\Bioanalyzer\2015-12-14\2015-12-14_003.xad

Created: 12/14/2015 2:47:31 PM
 Modified: 12/14/2015 3:28:50 PM

Electrophoresis Assay Details

General Analysis Settings

Number of Available Sample and Ladder Wells (Max.) : 12
 Minimum Visible Range [s] : 32
 Maximum Visible Range [s] : 138
 Start Analysis Time Range [s] : 33
 End Analysis Time Range [s] : 137.5
 Ladder Concentration [pg/μl] : 1950
 Uses Standard Area for Ladder Fragments
 Lower Marker Concentration [pg/μl] : 125
 Upper Marker Concentration [pg/μl] : 75
 Used Upper Marker for Quantitation
 Standard Curve Fit is Point to Point
 Show Data Aligned to Lower and Upper Marker

Integrator Settings

Integration Start Time [s] : 33.05
 Integration End Time [s] : 137
 Slope Threshold : 0.8
 Height Threshold [FU] : 5
 Area Threshold : 0.1
 Width Threshold [s] : 0.6
 Baseline Plateau [s] : 0.5

Filter Settings

Filter Width [s] : 0.5
 Polynomial Order : 4

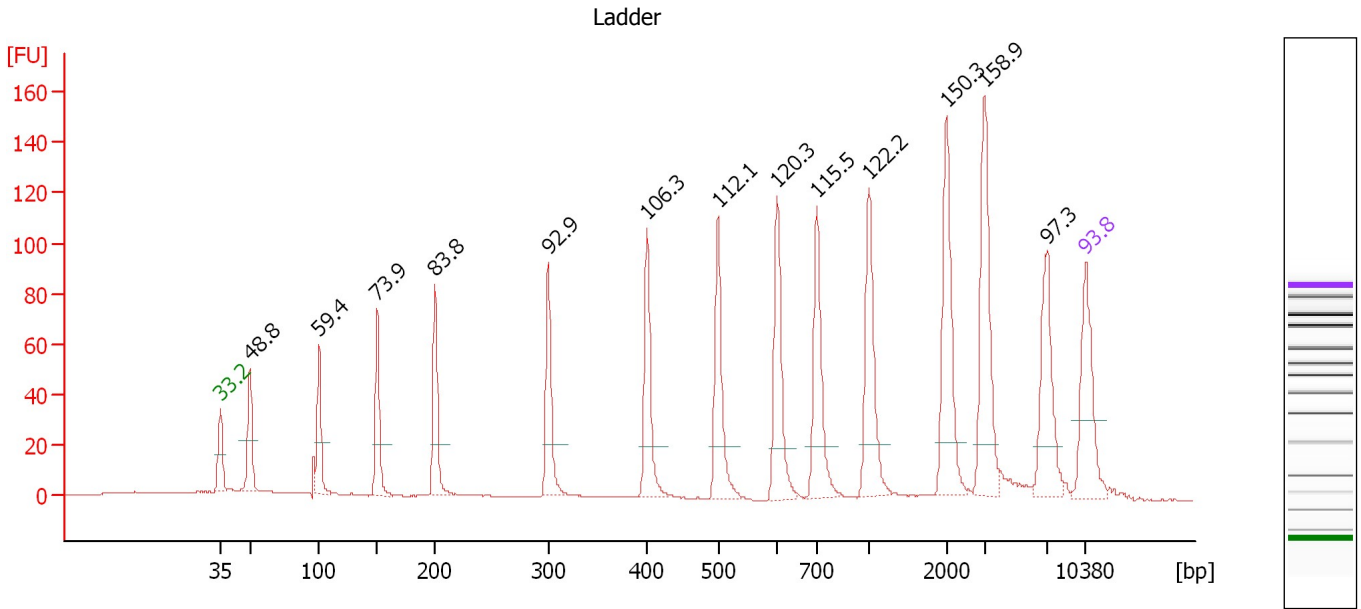
Ladder

Ladder Peak	Size	Area
1	35	160
2	50	210
3	100	208
4	150	221
5	200	242
6	300	270
7	400	305
8	500	306
9	600	336
10	700	321
11	1000	366
12	2000	413
13	3000	411
14	7000	400
15	10380	214

Assay Class: High Sensitivity DNA Assay
 Data Path: C:\...ents and Settings\Bioanalyzer\2015-12-14\2015-12-14_003.xad

Created: 12/14/2015 2:47:31 PM
 Modified: 12/14/2015 3:28:50 PM

Electropherogram Summary



Overall Results for Ladder

Noise: 0.2

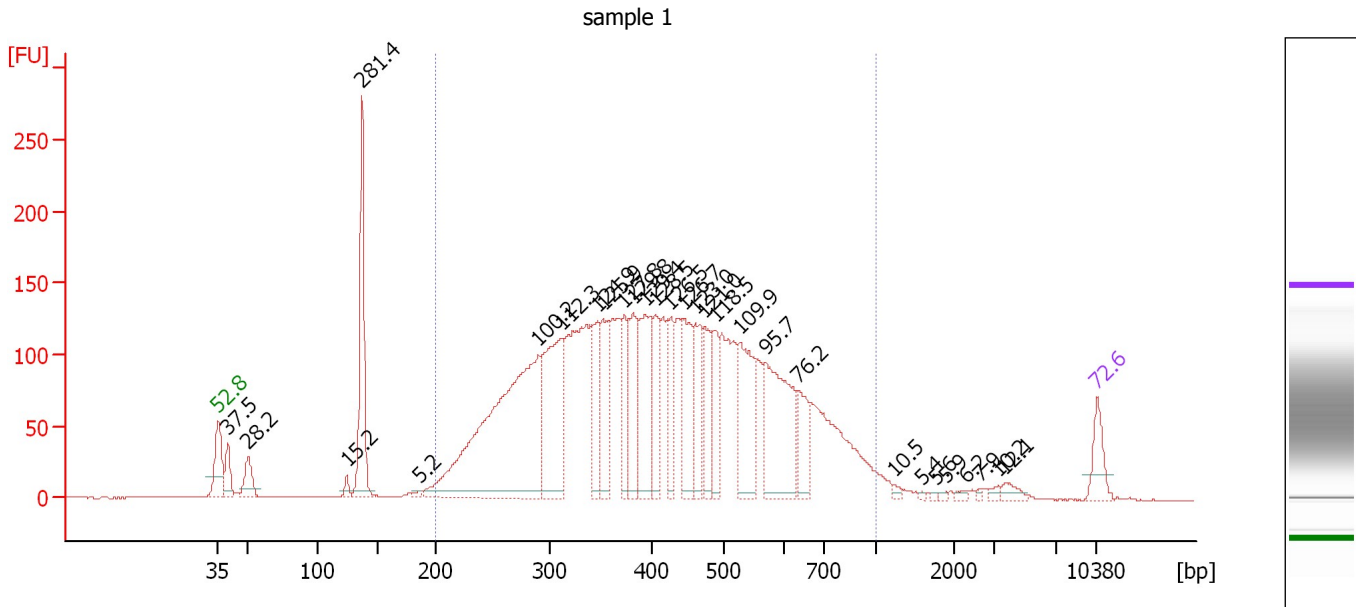
Peak table for Ladder

Peak	Size [bp]	Conc. [pg/μl]	Molarity [pmol/l]	Observations	Aligned Migration Time [s]
1	35	125.00	5,411.3	Lower Marker	43.00
2	50	150.00	4,545.5	Ladder Peak	45.37
3	100	150.00	2,272.7	Ladder Peak	50.98
4	150	150.00	1,515.2	Ladder Peak	55.68
5	200	150.00	1,136.4	Ladder Peak	60.34
6	300	150.00	757.6	Ladder Peak	69.48
7	400	150.00	568.2	Ladder Peak	77.50
8	500	150.00	454.5	Ladder Peak	83.24
9	600	150.00	378.8	Ladder Peak	88.03
10	700	150.00	324.7	Ladder Peak	91.22
11	1,000	150.00	227.3	Ladder Peak	95.45
12	2,000	150.00	113.6	Ladder Peak	101.70
13	3,000	150.00	75.8	Ladder Peak	104.76
14	7,000	150.00	32.5	Ladder Peak	109.85
15	10,380	75.00	10.9	Upper Marker	113.00

Assay Class: High Sensitivity DNA Assay
 Data Path: C:\...ents and Settings\Bioanalyzer\2015-12-14\2015-12-14_003.xad

Created: 12/14/2015 2:47:31 PM
 Modified: 12/14/2015 3:28:50 PM

Electropherogram Summary Continued ...



Overall Results for sample 1 : sample 1

Number of peaks found: 29 Corr. Area 1: 4,232.5
 Noise: 0.2

Peak table for sample 1 : sample 1

Peak	Size [bp]	Conc. [pg/μl]	Molarity [pmol/l]	Observations	Aligned Migration Time [s]
1	35	125.00	5,411.3	Lower Marker	43.00
2	40	110.44	4,200.3		43.77
3	50	119.89	3,627.8		45.38
4	124	31.33	382.6		53.24
5	137	571.67	6,313.8		54.48
6	187	13.19	107.0		59.11
7	289	1,509.66	7,907.3		68.50
8	310	566.28	2,767.5		70.29
9	347	199.45	871.9		73.22
10	352	255.40	1,098.1		73.69
11	373	179.12	728.5		75.30
12	382	257.68	1,021.8		76.07
13	394	343.93	1,323.5		77.00
14	406	194.49	725.7		77.85
15	427	175.95	624.6		79.04
16	445	257.16	876.4		80.06
17	461	201.54	662.6		81.00
18	474	183.64	586.7		81.76
19	489	167.16	517.9		82.61
20	529	310.24	889.3		84.61
21	569	451.63	1,201.7		86.56
22	637	135.56	322.6		89.20
23	1,218	10.57	13.2		96.81
24	1,571	4.14	4.0		99.02
25	1,748	5.15	4.5		100.12

Assay Class: High Sensitivity DNA Assay
 Data Path: C:\...ents and Settings\Bioanalyzer\2015-12-14\2015-12-14_003.xad

Created: 12/14/2015 2:47:31 PM
 Modified: 12/14/2015 3:28:50 PM

Electropherogram Summary Continued ...

... Peak table for sample 1 : sample 1

Peak	Size [bp]	Conc. [pg/ μ l]	Molarity [pmol/l]	Observations	Aligned Migration Time [s]
26	1,884	5.69	4.6		100.97
27	2,304	8.01	5.3		102.63
28	2,664	5.81	3.3		103.73
29	3,328	10.45	4.8		105.18
30	3,729	24.31	9.9		105.69
31	10,380	75.00	10.9	Upper Marker	113.00

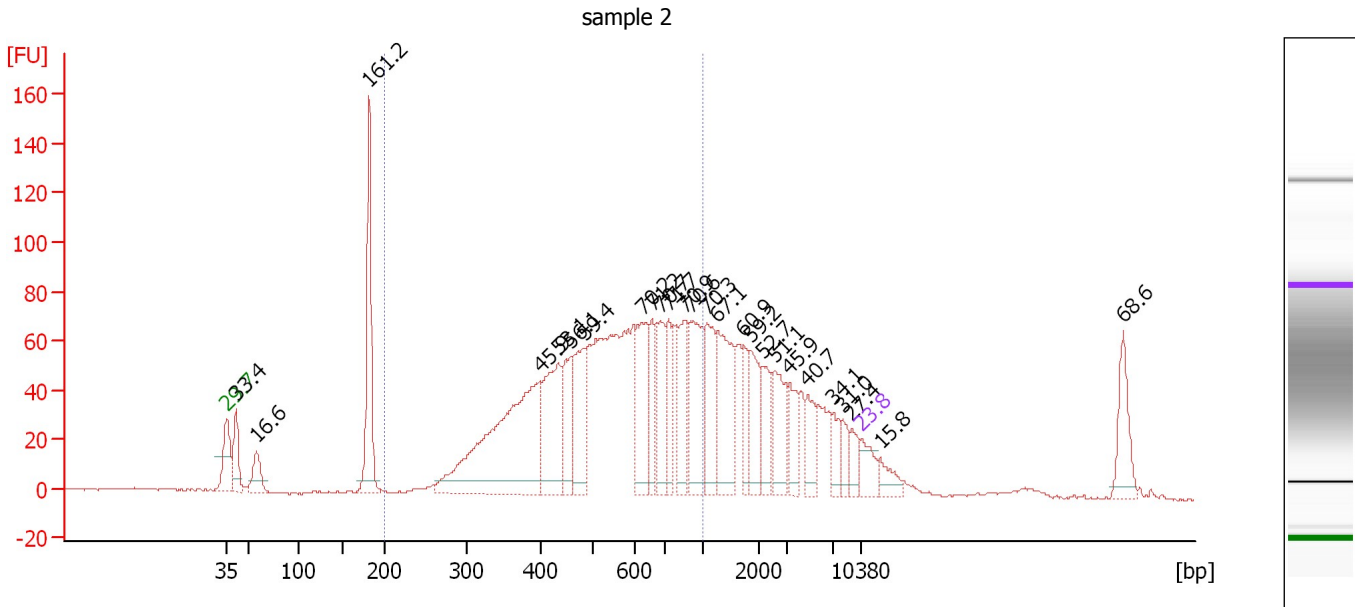
Region table for sample 1 : sample 1

From [bp]	To [bp]	Average Size [bp]	Corr. Area	Molarity [pmol/l]	Co Conc. lor [pg/ μ l]	% of Total	Size distribution in CV [%]
200	1,000	435	4,232.5	31,883.0	7,858.06	90	34.0

Assay Class: High Sensitivity DNA Assay
 Data Path: C:\...ents and Settings\Bioanalyzer\2015-12-14\2015-12-14_003.xad

Created: 12/14/2015 2:47:31 PM
 Modified: 12/14/2015 3:28:50 PM

Electropherogram Summary Continued ...



Overall Results for sample 2 : sample 2

Number of peaks found: 26 Corr. Area 1: 1,462.1
 Noise: 0.3

Peak table for sample 2 : sample 2

Peak	Size [bp]	Conc. [pg/μl]	Molarity [pmol/l]	Observations	Aligned Migration Time [s]
1	35	125.00	5,411.3	Lower Marker	43.00
2	41	191.33	7,015.2		44.00
3	58	143.26	3,762.2		46.24
4	182	572.96	4,757.4		58.71
5	401	1,082.55	4,085.6		77.59
6	436	406.95	1,413.1		79.59
7	459	242.70	801.3		80.88
8	488	291.26	905.0		82.53
9	623	312.09	758.9		88.76
10	658	164.63	379.0		89.88
11	686	228.80	505.5		90.76
12	735	162.35	334.9		91.71
13	860	220.76	389.0		93.47
14	910	313.98	522.8		94.18
15	1,079	227.44	319.3		95.94
16	1,267	335.49	401.1		97.12
17	1,728	105.20	92.2		100.00
18	1,850	169.87	139.1		100.76
19	2,136	126.05	89.4		102.12
20	2,578	171.26	100.6		103.47
21	3,233	109.56	51.3		105.06
22	4,805	97.35	30.7		107.06
23	7,033	67.88	14.6		109.88
24	8,170	55.88	10.4		110.94
25	9,243	56.45	9.3		111.94

Assay Class: High Sensitivity DNA Assay
 Data Path: C:\...ents and Settings\Bioanalyzer\2015-12-14\2015-12-14_003.xad

Created: 12/14/2015 2:47:31 PM
 Modified: 12/14/2015 3:28:50 PM

Electropherogram Summary Continued ...

... Peak table for sample 2 : sample 2

Peak	Size [bp]	Conc. [pg/ μ l]	Molarity [pmol/l]	Observations	Aligned Migration Time [s]
26	10,380	75.00	10.9	Upper Marker	113.00
27	12,590	0.00	0.0		115.06
28	41,323	0.00	0.0		141.82

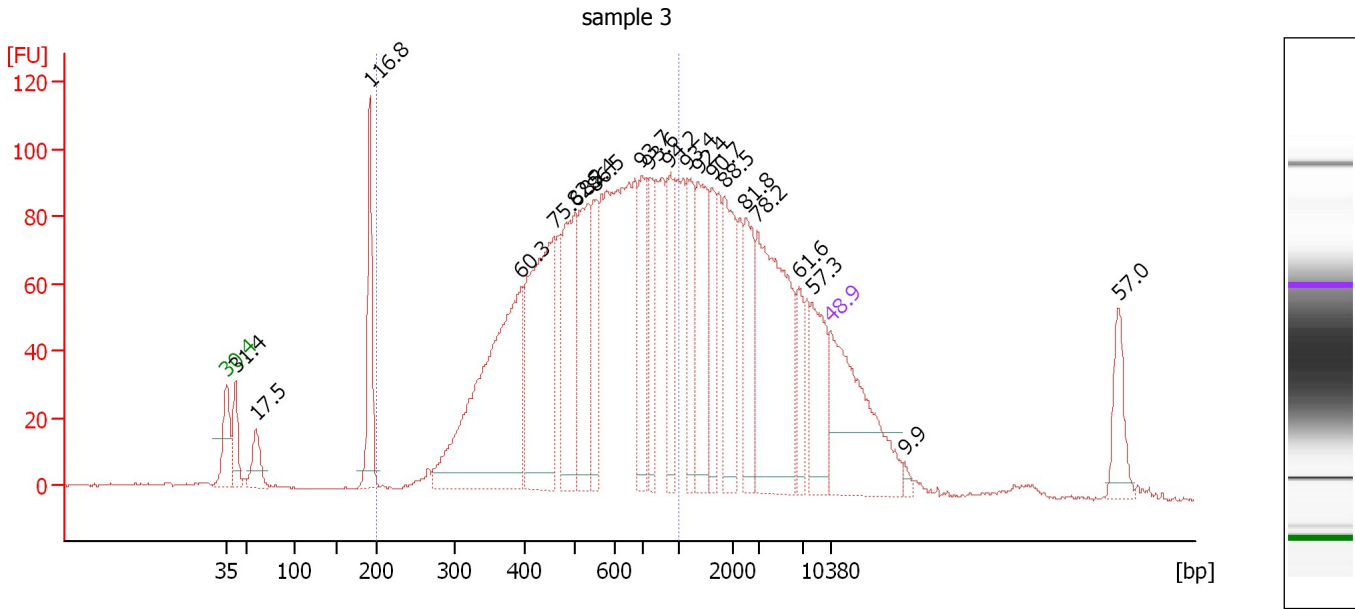
Region table for sample 2 : sample 2

From [bp]	To [bp]	Average Size [bp]	Corr. Area	Molarity [pmol/l]	Co Conc. lor [pg/ μ l]	% of Total	Size distribution in CV [%]
200	1,000	567	1,462.1	14,842.4	4,832.54	59	31.8

Assay Class: High Sensitivity DNA Assay
 Data Path: C:\...ents and Settings\Bioanalyzer\2015-12-14\2015-12-14_003.xad

Created: 12/14/2015 2:47:31 PM
 Modified: 12/14/2015 3:28:50 PM

Electropherogram Summary Continued ...



Overall Results for sample 3 : sample 3

Number of peaks found: 21 Corr. Area 1: 1,880.4
 Noise: 0.4

Peak table for sample 3 : sample 3

Peak	Size [bp]	Conc. [pg/μl]	Molarity [pmol/l]	Observations	Aligned Migration Time [s]
1	35	125.00	5,411.3	Lower Marker	43.00
2	42	28.73	1,045.4		44.05
3	60	24.49	621.6		46.46
4	192	65.94	519.6		59.62
5	396	201.00	769.5		77.17
6	460	141.07	464.9		80.93
7	503	78.14	235.2		83.41
8	533	68.08	193.5		84.83
9	553	40.75	111.8		85.75
10	695	52.98	115.5		91.07
11	751	38.02	76.7		91.93
12	922	39.56	65.0		94.34
13	1,159	40.94	53.5		96.44
14	1,357	56.29	62.9		97.68
15	1,614	28.59	26.8		99.28
16	1,841	51.79	42.6		100.71
17	2,482	35.09	21.4		103.18
18	2,906	107.37	56.0		104.47
19	6,561	19.69	4.5		109.29
20	8,059	37.30	7.0		110.84
21	10,380	75.00	10.9	Upper Marker	113.00
22	19,533	0.00	0.0		121.53
23	46,196	0.00	0.0		146.36

Assay Class: High Sensitivity DNA Assay
Data Path: C:\...ents and Settings\Bioanalyzer\2015-12-14\2015-12-14_003.xad

Created: 12/14/2015 2:47:31 PM
Modified: 12/14/2015 3:28:50 PM

Electropherogram Summary Continued ...

... Region table for sample 3 :

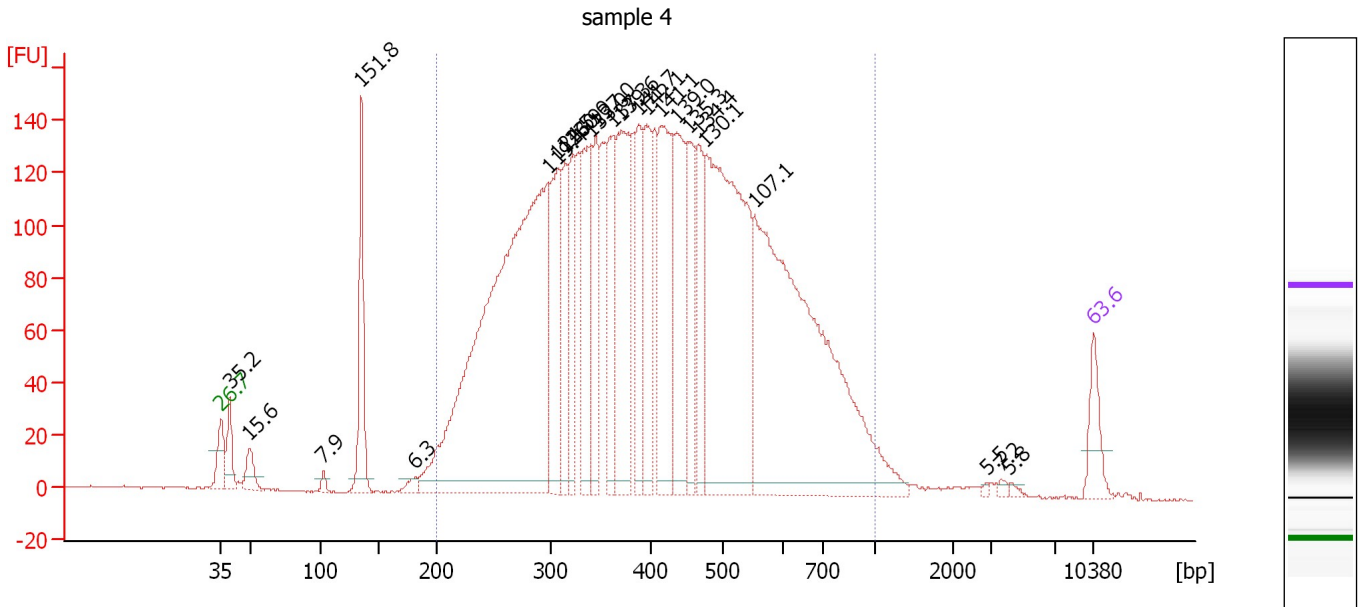
sample 3

From [bp]	To [bp]	Average Size [bp]	Corr. Area	Molarity [pmol/l]	Co Conc. lor [pg/μl]	% of Total	Size distribution in CV [%]
200	1,000	568	1,880.4	3,040.2	997.20	58	31.5

Assay Class: High Sensitivity DNA Assay
 Data Path: C:\...ents and Settings\Bioanalyzer\2015-12-14\2015-12-14_003.xad

Created: 12/14/2015 2:47:31 PM
 Modified: 12/14/2015 3:28:50 PM

Electropherogram Summary Continued ...



Overall Results for sample 4 : sample 4

Number of peaks found: 24 Corr. Area 1: 4,684.8
 Noise: 0.4

Peak table for sample 4 : sample 4

Peak	Size [bp]	Conc. [pg/μl]	Molarity [pmol/l]	Observations	Aligned Migration Time [s]
1	35	125.00	5,411.3	Lower Marker	43.00
2	39	120.98	4,660.9		43.68
3	49	81.79	2,511.7		45.27
4	103	20.15	297.8		51.22
5	135	339.88	3,819.7		54.25
6	181	26.30	220.1		58.57
7	297	2,318.44	11,818.4		69.23
8	306	402.67	1,990.9		70.00
9	314	230.14	1,110.8		70.60
10	322	230.24	1,081.9		71.28
11	339	315.70	1,411.1		72.61
12	345	246.82	1,084.5		73.08
13	361	274.77	1,152.0		74.41
14	370	494.17	2,021.2		75.13
15	388	249.93	977.2		76.50
16	396	278.61	1,067.3		77.14
17	414	446.07	1,633.0		78.30
18	435	384.56	1,337.9		79.54
19	453	252.45	843.6		80.57
20	467	217.27	705.2		81.34
21	477	1,159.67	3,687.3		81.89
22	553	1,541.72	4,222.6		85.79
23	2,882	4.75	2.5		104.40
24	3,657	8.12	3.4		105.60
25	4,195	6.68	2.4		106.28

Assay Class: High Sensitivity DNA Assay
Data Path: C:\...ents and Settings\Bioanalyzer\2015-12-14\2015-12-14_003.xad

Created: 12/14/2015 2:47:31 PM
Modified: 12/14/2015 3:28:50 PM

Electropherogram Summary Continued ...**... Peak table for sample 4 : sample 4**

Peak	Size [bp]	Conc. [pg/ μ l]	Molarity [pmol/l]	Observations	Aligned Migration Time [s]
26	10,380	75.00	10.9	Upper Marker	113.00

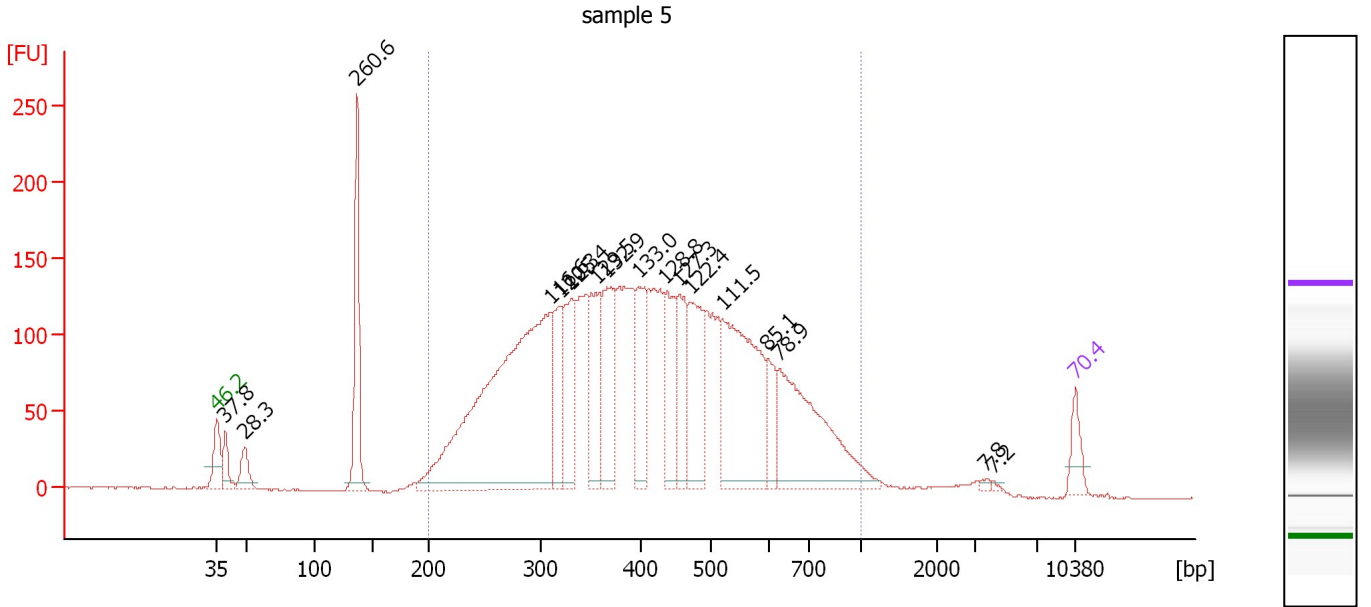
Region table for sample 4 : sample 4

From [bp]	To [bp]	Average Size [bp]	Corr. Area	Molarity [pmol/l]	Co Conc. lor [pg/ μ l]	% of Total	Size distribution in CV [%]
200	1,000	429	4,684.8	40,646.3	9,850.56	93	34.4

Assay Class: High Sensitivity DNA Assay
Data Path: C:\...ents and Settings\Bioanalyzer\2015-12-14\2015-12-14_003.xad

Created: 12/14/2015 2:47:31 PM
Modified: 12/14/2015 3:28:50 PM

Electropherogram Summary Continued ...



Overall Results for sample 5 : sample 5

Number of peaks found: 17 Corr. Area 1: 4,415.2
Noise: 0.5

Peak table for sample 5 : sample 5

Peak	Size [bp]	Conc. [pg/µl]	Molarity [pmol/l]	Observations	Aligned Migration Time [s]
1	35	125.00	5,411.3	Lower Marker	43.00
2	39	133.13	5,119.7		43.70
3	49	144.57	4,443.5		45.26
4	137	573.64	6,355.6		54.43
5	309	2,323.21	11,385.4		70.22
6	319	315.81	1,497.8		71.04
7	330	403.28	1,852.9		71.87
8	355	346.13	1,476.3		73.91
9	367	410.72	1,697.4		74.83
10	399	353.46	1,343.6		77.39
11	435	329.97	1,148.8		79.52
12	456	291.66	969.9		80.70
13	471	422.31	1,359.1		81.57
14	520	857.50	2,496.6		84.22
15	597	151.93	385.8		87.87
16	626	725.26	1,754.3		88.87
17	3,734	9.43	3.8		105.70
18	4,178	6.29	2.3		106.26
19	10,380	75.00	10.9	Upper Marker	113.00

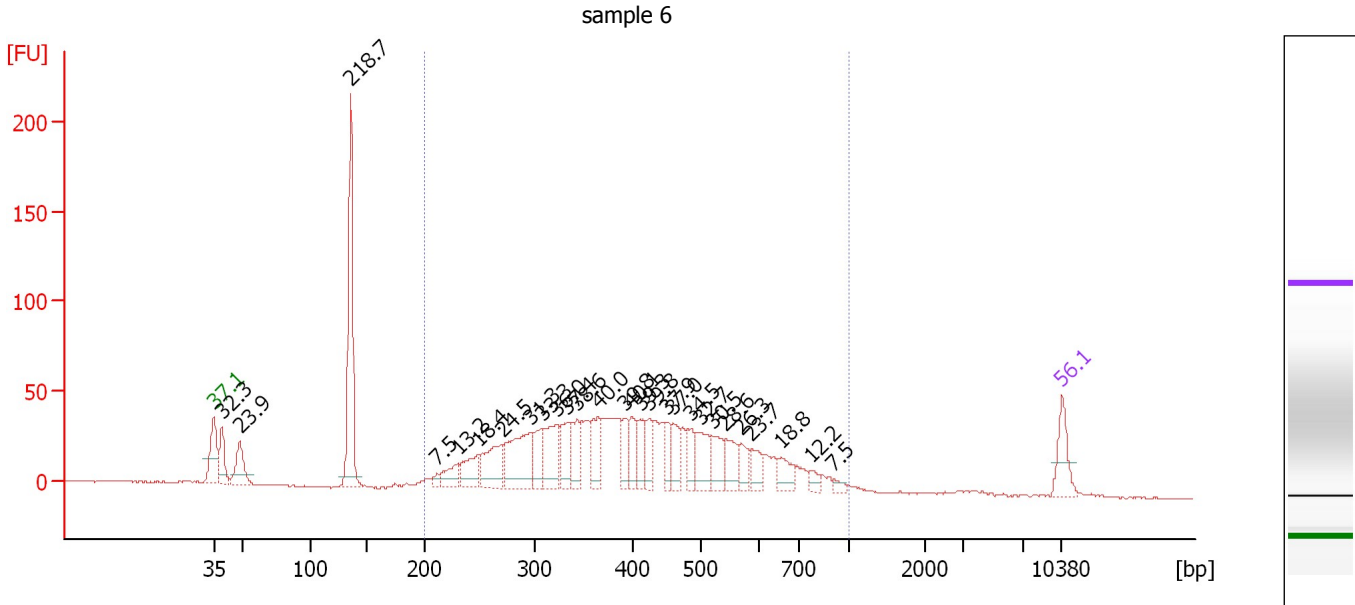
Region table for sample 5 : sample 5

From [bp]	To [bp]	Average Size [bp]	Corr. Area	Molarity [pmol/l]	Co Conc. lor [pg/µl]	% of Total	Size distribution in CV [%]
200	1,000	433	4,415.2	37,554.2	9,202.91	91	34.1

Assay Class: High Sensitivity DNA Assay
 Data Path: C:\...ents and Settings\Bioanalyzer\2015-12-14\2015-12-14_003.xad

Created: 12/14/2015 2:47:31 PM
 Modified: 12/14/2015 3:28:50 PM

Electropherogram Summary Continued ...



Overall Results for sample 6 : sample 6

Number of peaks found: 28 Corr. Area 1: 1,225.1
 Noise: 0.4

Peak table for sample 6 : sample 6

Peak	Size [bp]	Conc. [pg/μl]	Molarity [pmol/l]	Observations	Aligned Migration Time [s]
1	35	125.00	5,411.3	Lower Marker	43.00
2	39	133.82	5,139.4		43.70
3	49	143.60	4,474.0		45.16
4	135	585.59	6,552.9		54.31
5	212	18.44	131.8		61.43
6	231	77.40	508.2		63.15
7	250	110.41	670.4		64.87
8	271	175.31	981.2		66.80
9	296	262.60	1,343.2		69.13
10	308	103.73	510.7		70.10
11	322	168.86	794.6		71.25
12	334	115.45	524.5		72.17
13	344	98.39	433.5		73.01
14	365	103.36	428.7		74.72
15	393	76.37	294.2		76.97
16	400	69.87	264.8		77.49
17	412	78.56	288.8		78.20
18	425	73.27	261.1		78.95
19	451	63.70	213.9		80.44
20	460	84.16	277.4		80.93
21	484	60.01	187.8		82.33
22	498	112.53	342.4		83.13
23	520	86.98	253.6		84.18
24	542	81.08	226.8		85.24
25	569	56.36	150.0		86.56

Assay Class: High Sensitivity DNA Assay
 Data Path: C:\...ents and Settings\Bioanalyzer\2015-12-14\2015-12-14_003.xad

Created: 12/14/2015 2:47:31 PM
 Modified: 12/14/2015 3:28:50 PM

Electropherogram Summary Continued ...

... Peak table for sample 6 : sample 6

Peak	Size [bp]	Conc. [pg/ μ l]	Molarity [pmol/l]	Observations	Aligned Migration Time [s]
26	587	61.69	159.3		87.39
27	657	56.91	131.2		89.86
28	775	26.51	51.8		92.28
29	909	15.54	25.9		94.17
30	10,380	75.00	10.9	Upper Marker	113.00

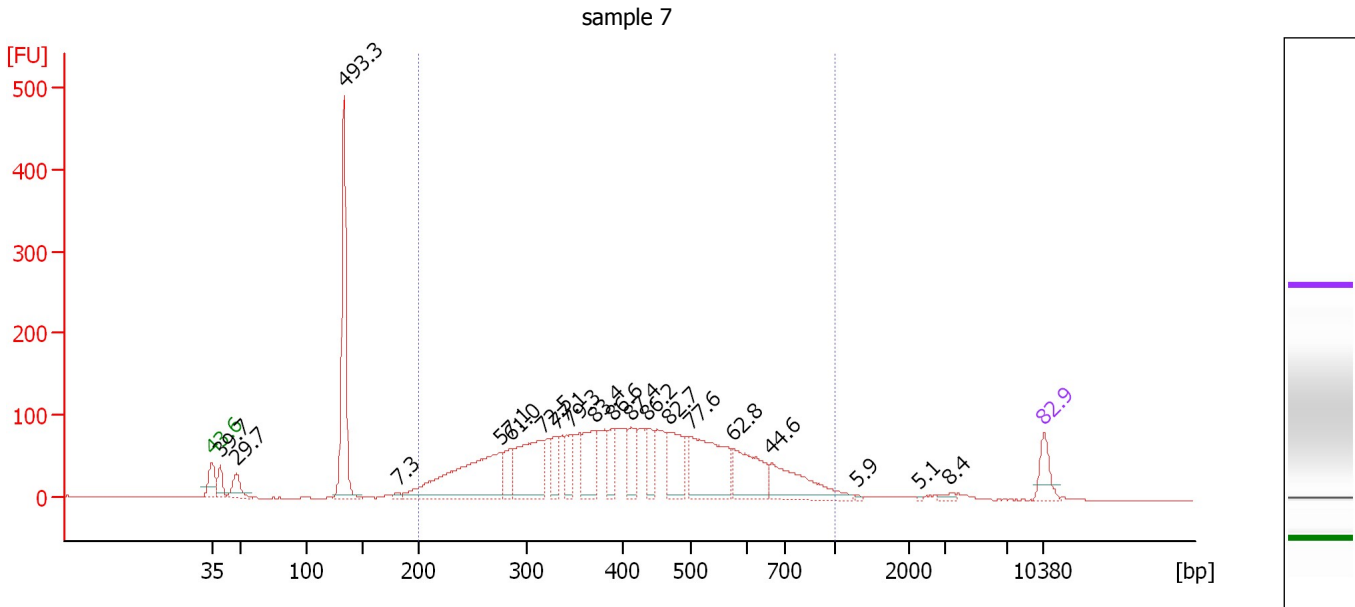
Region table for sample 6 : sample 6

From [bp]	To [bp]	Average Size [bp]	Corr. Area	Molarity [pmol/l]	Co Conc. lor [pg/ μ l]	% of Total	Size distribution in CV [%]
200	1,000	427	1,225.1	12,205.5	2,980.84	80	33.2

Assay Class: High Sensitivity DNA Assay
 Data Path: C:\...ents and Settings\Bioanalyzer\2015-12-14\2015-12-14_003.xad

Created: 12/14/2015 2:47:31 PM
 Modified: 12/14/2015 3:28:50 PM

Electropherogram Summary Continued ...



Overall Results for sample 7 : sample 7

Number of peaks found: 20 Corr. Area 1: 2,729.3
 Noise: 0.3

Peak table for sample 7 : sample 7

Peak	Size [bp]	Conc. [pg/μl]	Molarity [pmol/l]	Observations	Aligned Migration Time [s]
1	35	125.00	5,411.3	Lower Marker	43.00
2	39	99.63	3,845.3		43.67
3	48	120.33	3,816.8		45.02
4	133	872.96	9,943.6		54.08
5	182	16.07	133.8		58.66
6	276	716.96	3,930.7		67.32
7	285	130.97	695.8		68.13
8	317	409.93	1,957.8		70.87
9	331	132.38	605.5		71.99
10	346	125.19	548.6		73.15
11	370	232.08	949.4		75.13
12	391	107.93	418.1		76.79
13	413	144.00	528.9		78.22
14	436	132.04	458.8		79.57
15	467	228.44	740.6		81.37
16	501	452.72	1,368.8		83.29
17	576	269.28	708.2		86.88
18	664	263.63	601.6		90.07
19	1,281	4.10	4.8		97.21
20	2,261	3.06	2.0		102.50
21	3,268	13.00	6.0		105.10
22	10,380	75.00	10.9	Upper Marker	113.00

Assay Class: High Sensitivity DNA Assay
Data Path: C:\...ents and Settings\Bioanalyzer\2015-12-14\2015-12-14_003.xad

Created: 12/14/2015 2:47:31 PM
Modified: 12/14/2015 3:28:50 PM

Electropherogram Summary Continued ...

... Region table for sample 7 :

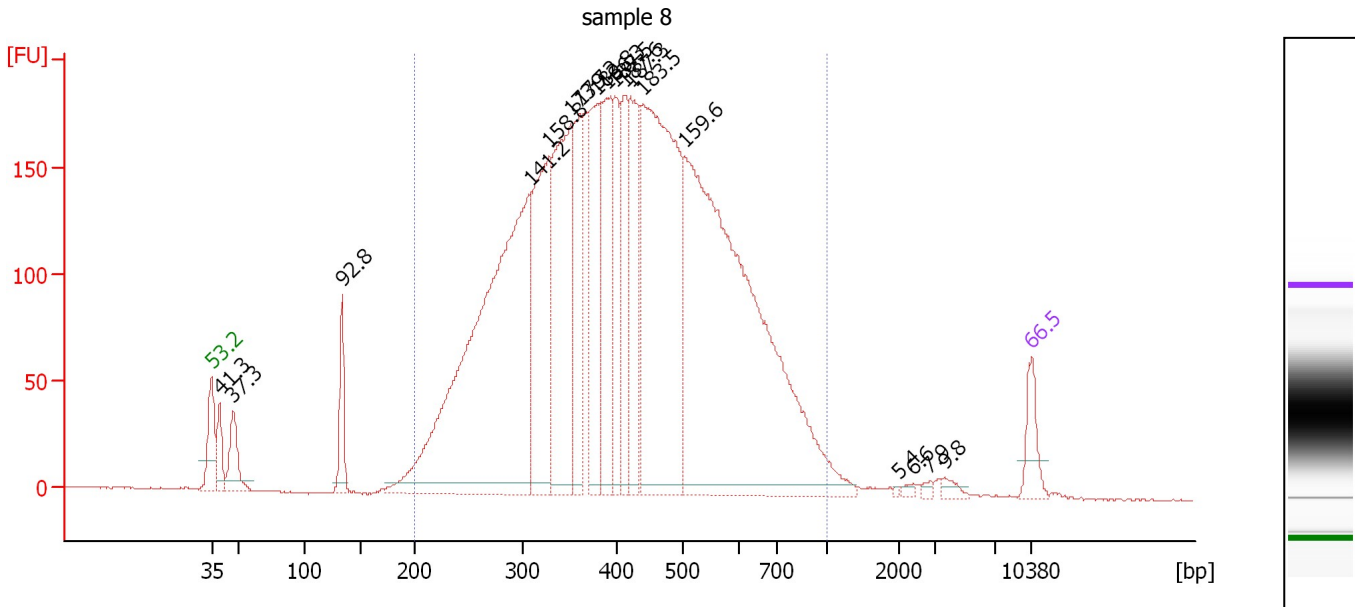
sample 7

From [bp]	To [bp]	Average Size [bp]	Corr. Area	Molarity [pmol/l]	Co Conc. lor [pg/μl]	% of Total	Size distribution in CV [%]
200	1,000	431	2,729.3	17,422.1	4,249.80	81	33.9

Assay Class: High Sensitivity DNA Assay
 Data Path: C:\...ents and Settings\Bioanalyzer\2015-12-14\2015-12-14_003.xad

Created: 12/14/2015 2:47:31 PM
 Modified: 12/14/2015 3:28:50 PM

Electropherogram Summary Continued ...



Overall Results for sample 8 : sample 8

Number of peaks found: 18 Corr. Area 1: 5,391.7
 Noise: 0.4

Peak table for sample 8 : sample 8

Peak	Size [bp]	Conc. [pg/μl]	Molarity [pmol/l]	Observations	Aligned Migration Time [s]
1	35	125.00	5,411.3	Lower Marker	43.00
2	39	119.30	4,597.5		43.68
3	47	179.26	5,803.5		44.87
4	134	170.50	1,931.7		54.15
5	309	2,178.18	10,694.4		70.17
6	330	679.68	3,124.5		71.86
7	352	747.24	3,213.8		73.68
8	362	397.65	1,664.7		74.45
9	381	453.28	1,804.2		75.95
10	390	471.30	1,829.6		76.73
11	399	250.80	952.9		77.41
12	413	305.70	1,120.4		78.27
13	422	357.60	1,283.5		78.77
14	441	1,391.40	4,778.5		79.87
15	503	2,390.08	7,203.5		83.37
16	1,995	3.81	2.9		101.67
17	2,405	9.04	5.7		102.94
18	2,851	9.79	5.2		104.31
19	3,644	18.54	7.7		105.58
20	10,380	75.00	10.9	Upper Marker	113.00

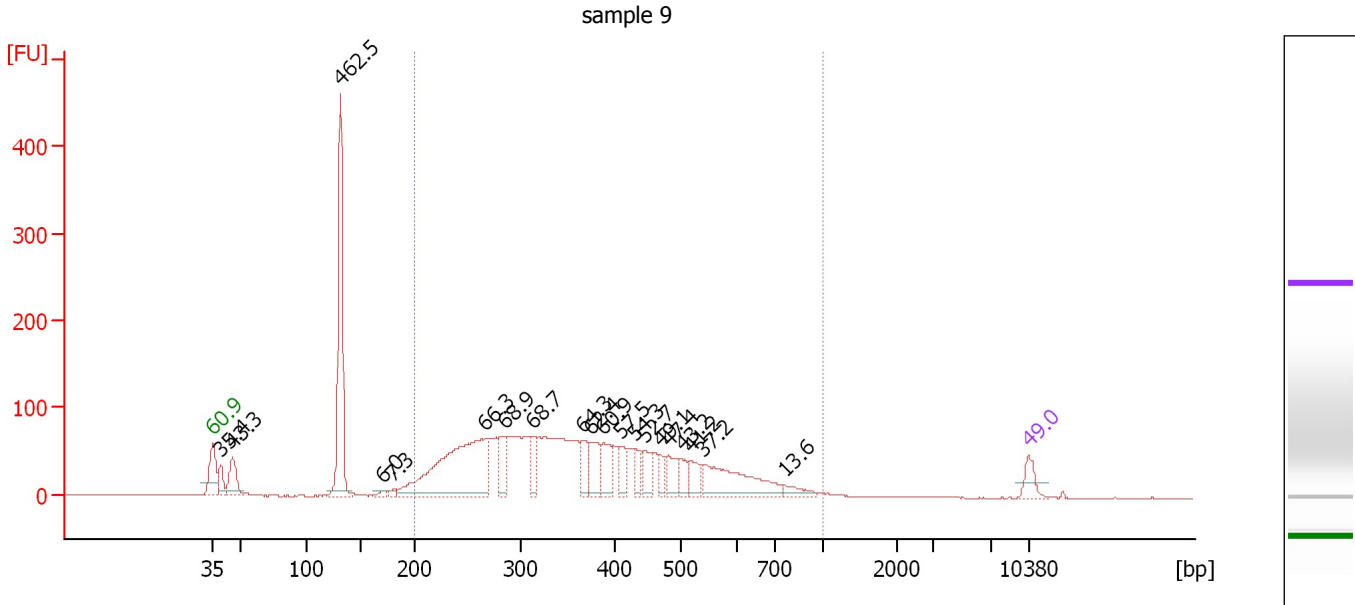
Region table for sample 8 : sample 8

From [bp]	To [bp]	Average Size [bp]	Corr. Area	Molarity [pmol/l]	Co Conc. [pg/μl]	% of Total	Size distribution in CV [%]
200	1,000	433	5,391.7	38,831.5	9,704.70	95	31.9

Assay Class: High Sensitivity DNA Assay
 Data Path: C:\...ents and Settings\Bioanalyzer\2015-12-14\2015-12-14_003.xad

Created: 12/14/2015 2:47:31 PM
 Modified: 12/14/2015 3:28:50 PM

Electropherogram Summary Continued ...



Overall Results for sample 9 : sample 9

Number of peaks found: 20 Corr. Area 1: 2,157.9
 Noise: 0.4

Peak table for sample 9 : sample 9

Peak	Size [bp]	Conc. [pg/μl]	Molarity [pmol/l]	Observations	Aligned Migration Time [s]
1	35	125.00	5,411.3	Lower Marker	43.00
2	39	140.45	5,409.4		43.69
3	46	259.60	8,552.0		44.74
4	132	1,276.38	14,659.6		53.98
5	171	25.27	224.5		57.59
6	180	24.79	208.8		58.46
7	267	1,347.84	7,661.0		66.42
8	284	218.74	1,166.7		68.03
9	312	156.85	762.9		70.41
10	366	137.97	570.8		74.80
11	374	217.17	880.5		75.39
12	387	194.77	761.8		76.49
13	409	129.52	480.2		78.00
14	430	97.60	343.8		79.24
15	445	143.05	487.6		80.06
16	468	84.50	273.8		81.39
17	480	145.05	458.2		82.07
18	500	89.89	272.2		83.26
19	517	116.62	342.0		84.04
20	539	469.21	1,319.8		85.09
21	762	66.05	131.4		92.09
22	10,380	75.00	10.9	Upper Marker	113.00

Assay Class: High Sensitivity DNA Assay
Data Path: C:\...ents and Settings\Bioanalyzer\2015-12-14\2015-12-14_003.xad

Created: 12/14/2015 2:47:31 PM
Modified: 12/14/2015 3:28:50 PM

Electropherogram Summary Continued ...

... Region table for sample 9 :

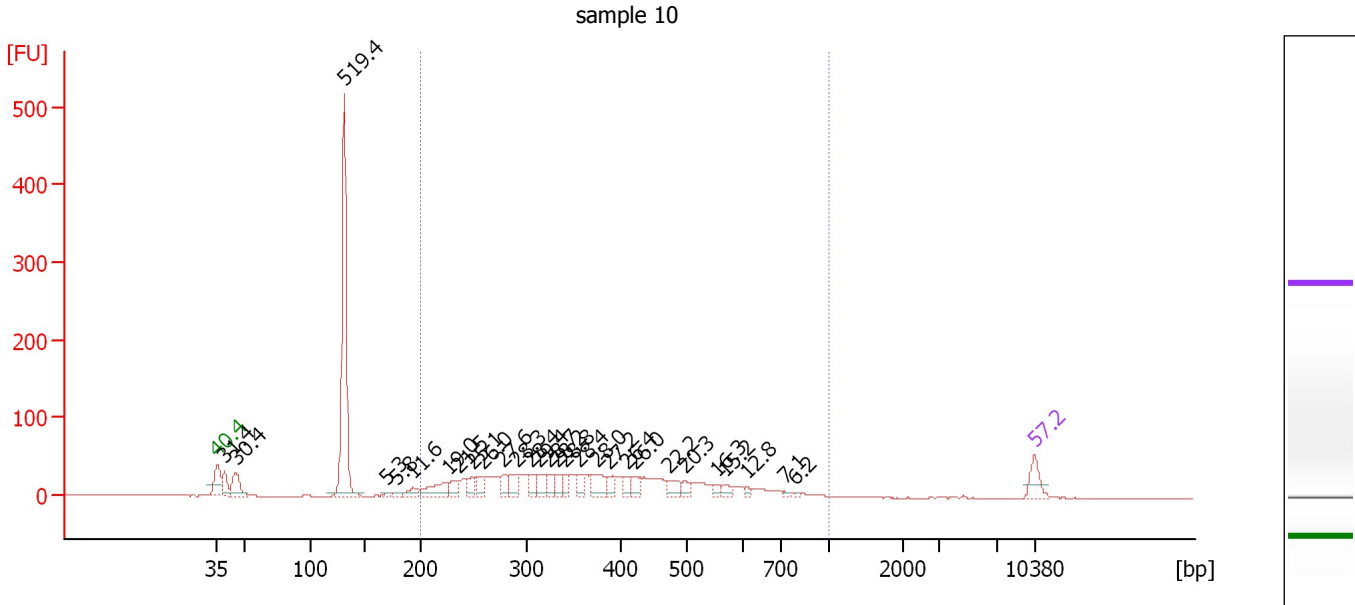
sample 9

From [bp]	To [bp]	Average Size [bp]	Corr. Area	Molarity [pmol/l]	Co Conc. lor [pg/μl]	% of Total	Size distribution in CV [%]
200	1,000	385	2,157.9	25,432.8	5,599.49	79	34.6

Assay Class: High Sensitivity DNA Assay
 Data Path: C:\...ents and Settings\Bioanalyzer\2015-12-14\2015-12-14_003.xad

Created: 12/14/2015 2:47:31 PM
 Modified: 12/14/2015 3:28:50 PM

Electropherogram Summary Continued ...



Overall Results for sample 10 : sample 10

Number of peaks found: 29 Corr. Area 1: 944.9
 Noise: 0.4

Peak table for sample 10 : sample 10

Peak	Size [bp]	Conc. [pg/μl]	Molarity [pmol/l]	Observations	Aligned Migration Time [s]
1	35	125.00	5,411.3	Lower Marker	43.00
2	39	115.18	4,469.7		43.64
3	45	179.07	6,014.1		44.60
4	131	1,427.90	16,540.8		53.87
5	169	16.38	146.9		57.44
6	179	22.28	188.9		58.35
7	194	54.62	426.8		59.77
8	226	152.41	1,020.7		62.74
9	236	78.11	500.9		63.65
10	250	74.83	454.0		64.89
11	259	81.81	478.2		65.75
12	278	78.76	428.9		67.49
13	290	87.82	458.5		68.59
14	305	66.56	330.9		69.87
15	314	94.42	455.7		70.60
16	325	59.28	276.6		71.47
17	332	57.67	263.1		72.06
18	341	56.76	252.0		72.79
19	357	63.36	269.2		74.02
20	374	119.08	482.0		75.44
21	388	52.73	205.9		76.54
22	410	56.09	207.2		78.09
23	421	60.64	218.1		78.73
24	474	70.36	224.9		81.75
25	495	39.98	122.2		82.98

Assay Class: High Sensitivity DNA Assay
 Data Path: C:\...ents and Settings\Bioanalyzer\2015-12-14\2015-12-14_003.xad

Created: 12/14/2015 2:47:31 PM
 Modified: 12/14/2015 3:28:50 PM

Electropherogram Summary Continued ...

... Peak table for sample 10 : sample 10

Peak	Size [bp]	Conc. [pg/μl]	Molarity [pmol/l]	Observations	Aligned Migration Time [s]
26	552	23.78	65.3		85.72
27	566	31.70	84.8		86.41
28	612	17.10	42.3		88.42
29	725	10.59	22.1		91.57
30	790	7.65	14.7		92.48
31	10,380	75.00	10.9	Upper Marker	113.00

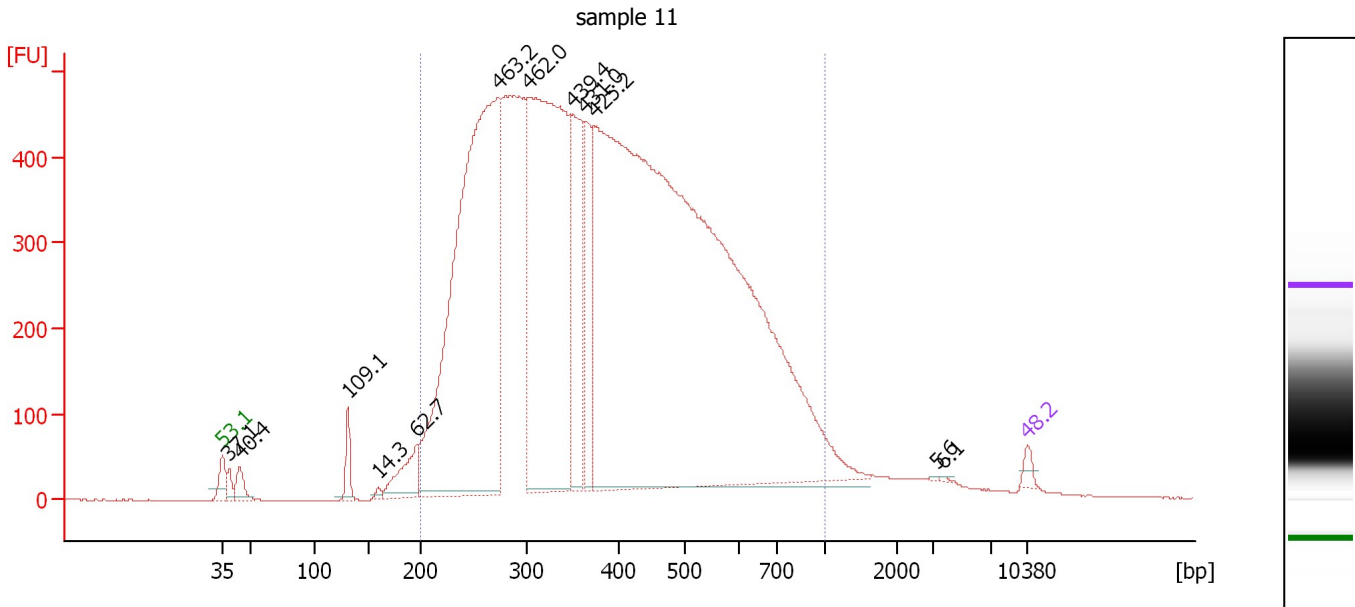
Region table for sample 10 : sample 10

From [bp]	To [bp]	Average Size [bp]	Corr. Area	Molarity [pmol/l]	Co Conc. lor [pg/μl]	% of Total	Size distribution in CV [%]
200	1,000	393	944.9	10,404.9	2,319.44	62	35.1

Assay Class: High Sensitivity DNA Assay
 Data Path: C:\...ents and Settings\Bioanalyzer\2015-12-14\2015-12-14_003.xad

Created: 12/14/2015 2:47:31 PM
 Modified: 12/14/2015 3:28:50 PM

Electropherogram Summary Continued ...



Overall Results for sample 11 : sample 11

Number of peaks found: 12 Corr. Area 1: 15,458.0
 Noise: 0.3

Peak table for sample 11 : sample 11

Peak	Size [bp]	Conc. [pg/μl]	Molarity [pmol/l]	Observations	Aligned Migration Time [s]
1	35	125.00	5,411.3	Lower Marker	43.00
2	39	168.75	6,587.6		43.60
3	45	311.10	10,549.9		44.53
4	132	328.55	3,783.5		53.95
5	160	58.00	550.0		56.59
6	196	653.03	5,057.5		59.93
7	273	10,634.02	59,090.5		66.98
8	303	8,179.55	40,906.5		69.72
9	349	2,125.24	9,220.6		73.43
10	364	1,373.18	5,720.9		74.59
11	373	22,610.99	91,863.7		75.33
12	3,349	8.66	3.9		105.21
13	3,678	10.00	4.1		105.62
14	10,380	75.00	10.9	Upper Marker	113.00

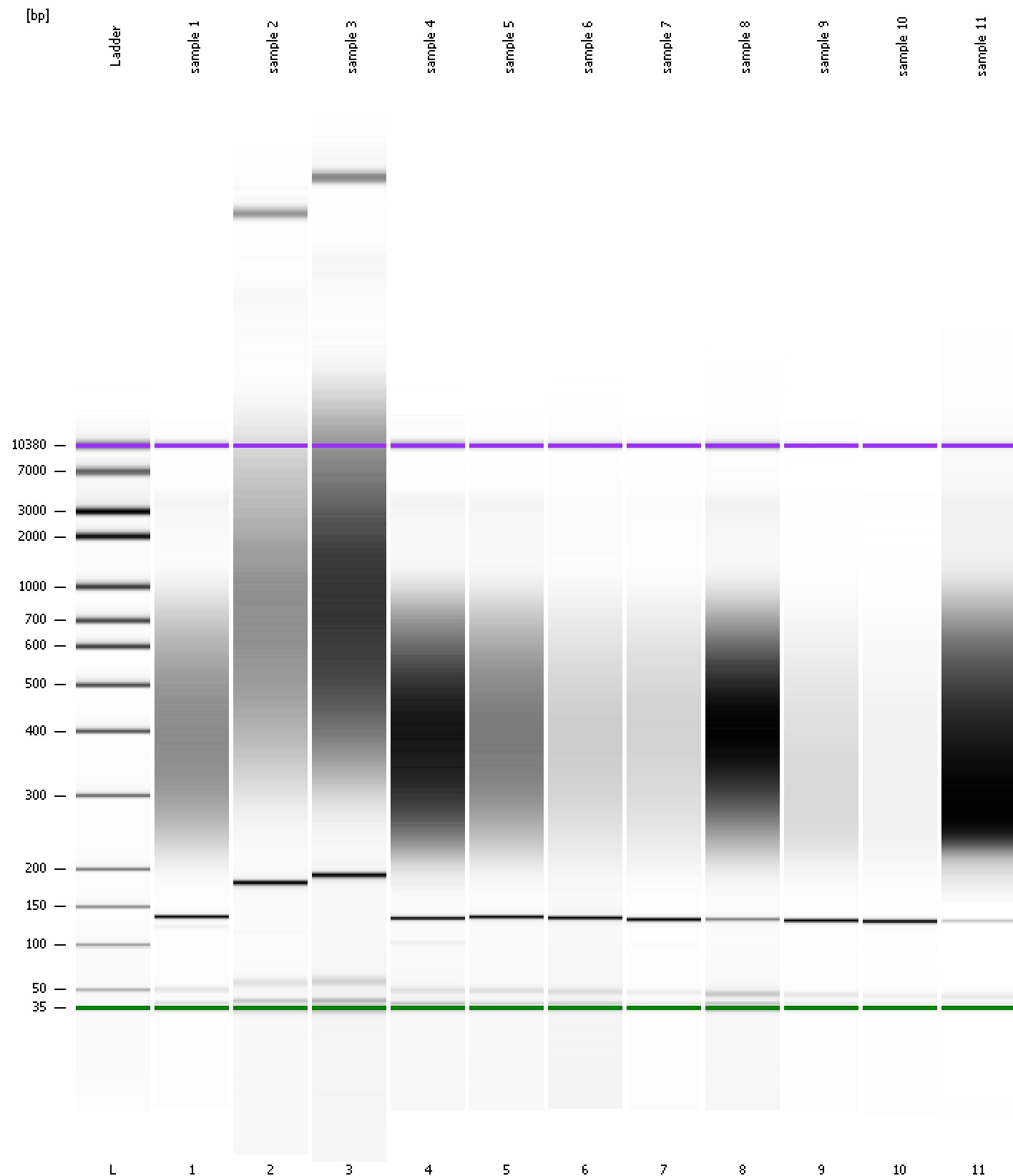
Region table for sample 11 : sample 11

From [bp]	To [bp]	Average Size [bp]	Corr. Area	Molarity [pmol/l]	Co Conc. lor [pg/μl]	% of Total	Size distribution in CV [%]
200	1,000	410	15,458.0	208,999.5	48,005.50	95	36.6

Assay Class: High Sensitivity DNA Assay
Data Path: C:\...ents and Settings\Bioanalyzer\2015-12-14\2015-12-14_003.xad

Created: 12/14/2015 2:47:31 PM
Modified: 12/14/2015 3:28:50 PM

Gel Image



Assay Class: High Sensitivity DNA Assay
 Data Path: C:\...ents and Settings\Bioanalyzer\2015-12-14\2015-12-14_003.xad

Created: 12/14/2015 2:47:31 PM
 Modified: 12/14/2015 3:28:50 PM

Run Logbook

Description	Number	Source	Category	Sub Category	Time	Time Zone	User	Host
Run ended on port 1 (Number of wells acquired: 12)		Instrument	Run		12/14/2015 3:28:49 PM	(GMT --08:00) Pacific Standard Time	UC Davis	D8XSMGH1
Run started on port 1 (File: C:\Documents and Settings\Bioanalyzer\2015-12-14\2015-12-14_003.xad)		Instrument	Run		12/14/2015 2:47:36 PM	(GMT --08:00) Pacific Standard Time	UC Davis	D8XSMGH1
Product Number : G2938B		Instrument	Run		12/14/2015 2:47:36 PM	(GMT --08:00) Pacific Standard Time	UC Davis	D8XSMGH1
Name :		Instrument	Run		12/14/2015 2:47:36 PM	(GMT --08:00) Pacific Standard Time	UC Davis	D8XSMGH1
Vendor : Agilent Technologies		Instrument	Run		12/14/2015 2:47:36 PM	(GMT --08:00) Pacific Standard Time	UC Davis	D8XSMGH1
Serial# : DE13701086		Instrument	Run		12/14/2015 2:47:36 PM	(GMT --08:00) Pacific Standard Time	UC Davis	D8XSMGH1
Firmware : C.01.069		Instrument	Run		12/14/2015 2:47:36 PM	(GMT --08:00) Pacific Standard Time	UC Davis	D8XSMGH1
Cartridge : Electrode		Instrument	Run		12/14/2015 2:47:36 PM	(GMT --08:00) Pacific Standard Time	UC Davis	D8XSMGH1