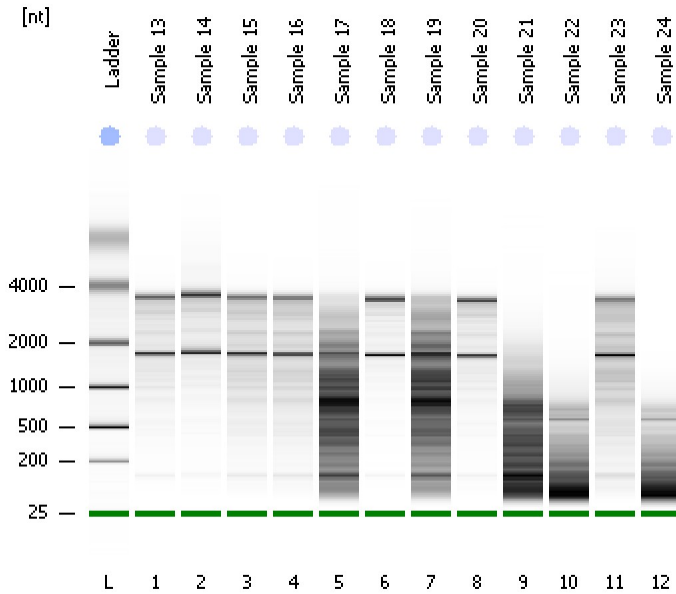


Assay Class: Eukaryote Total RNA Nano
Data Path: C:\...ents and Settings\Bioanalyzer\2015-12-15\2015-12-15_001.xad

Created: 12/15/2015 10:56:15 AM
Modified: 12/15/2015 11:20:07 AM

Electrophoresis File Run Summary



Instrument Information:

Instrument Name: DE13701086 Firmware: C.01.069
Serial#: DE13701086 Type: G2938B

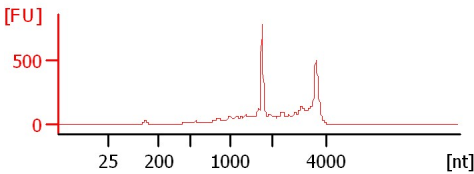
Assay Information:

Assay Origin Path: C:\Program Files\Agilent\2100 bioanalyzer\2100 expert\assays\RNA\Eukaryote Total RNA Nano Series II.xsy
Assay Class: Eukaryote Total RNA Nano
Version: 2.6
Assay Comments: Total RNA Analysis ng sensitivity (Eukaryote)
© Copyright 2003 - 2009 Agilent Technologies, Inc.

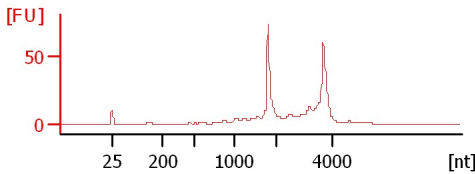
Chip Information:

Chip Lot #:
Reagent Kit Lot #:
Chip Comments:

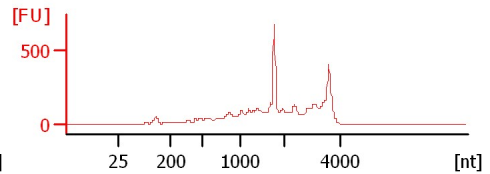
Sample 13
HiSeq 322 Total RNA QC
RIN: 7



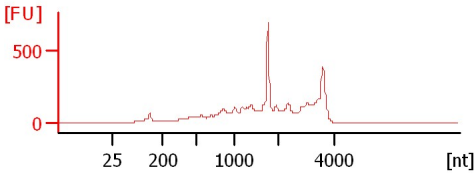
Sample 14
HiSeq 322 Total RNA QC
RIN: 8.10



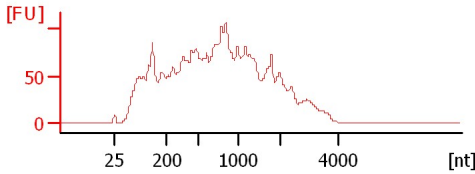
Sample 15
HiSeq 322 Total RNA QC
RIN: 6.30



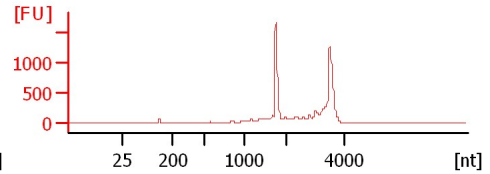
Sample 16
HiSeq 322 Total RNA QC
RIN: 6.10



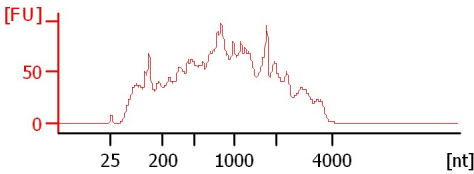
Sample 17
HiSeq 322 Total RNA QC
RIN: 2.50



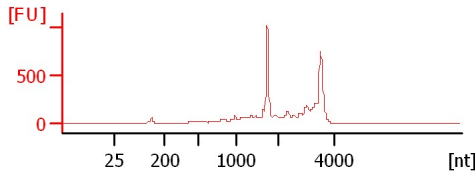
Sample 18
HiSeq 322 Total RNA QC
RIN: 8.70



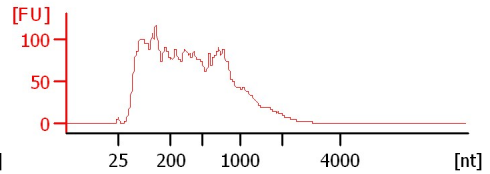
Sample 19
HiSeq 322 Total RNA QC
RIN: 2.70



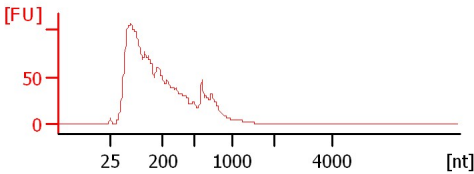
Sample 20
HiSeq 322 Total RNA QC
RIN: 7.40



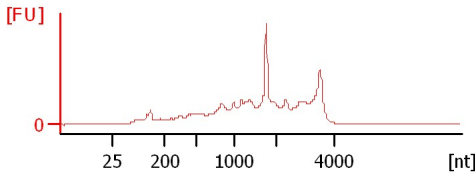
Sample 21
HiSeq 322 Total RNA QC
RIN: 2



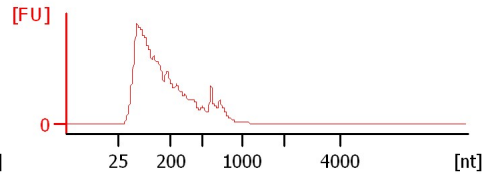
Sample 22
HiSeq 322 Total RNA QC
RIN: 2.10



Sample 23
HiSeq 322 Total RNA QC
RIN: 5.50



Sample 24
HiSeq 322 Total RNA QC
RIN: 2.20



Assay Class: Eukaryote Total RNA Nano
Data Path: C:\...ents and Settings\Bioanalyzer\2015-12-15\2015-12-15_001.xad

Created: 12/15/2015 10:56:15 AM
Modified: 12/15/2015 11:20:07 AM

Electrophoresis File Run Summary (Chip Summary)

Sample Name	Sample Comment	Status	Result Label	Result Color
Sample 13	HiSeq 322 Total RNA QC	✓	RIN:7	
Sample 14	HiSeq 322 Total RNA QC	✓	RIN: 8.10	
Sample 15	HiSeq 322 Total RNA QC	✓	RIN: 6.30	
Sample 16	HiSeq 322 Total RNA QC	✓	RIN: 6.10	
Sample 17	HiSeq 322 Total RNA QC	✓	RIN: 2.50	
Sample 18	HiSeq 322 Total RNA QC	✓	RIN: 8.70	
Sample 19	HiSeq 322 Total RNA QC	✓	RIN: 2.70	
Sample 20	HiSeq 322 Total RNA QC	✓	RIN: 7.40	
Sample 21	HiSeq 322 Total RNA QC	✓	RIN:2	
Sample 22	HiSeq 322 Total RNA QC	✓	RIN: 2.10	
Sample 23	HiSeq 322 Total RNA QC	✓	RIN: 5.50	
Sample 24	HiSeq 322 Total RNA QC	✓	RIN: 2.20	
Ladder		✓	All Other Samples	

Chip Lot #

Reagent Kit Lot #

Chip Comments :

Assay Class: Eukaryote Total RNA Nano
Data Path: C:\...ents and Settings\Bioanalyzer\2015-12-15\2015-12-15_001.xad

Created: 12/15/2015 10:56:15 AM
Modified: 12/15/2015 11:20:07 AM

Electrophoresis Assay Details

General Analysis Settings

Number of Available Sample and Ladder Wells (Max.) : 13
Minimum Visible Range [s] : 17
Maximum Visible Range [s] : 70
Start Analysis Time Range [s] : 19
End Analysis Time Range [s] : 69
Ladder Concentration [ng/μl] : 150
Lower Marker Concentration [ng/μl] : 0
Upper Marker Concentration [ng/μl] : 0
Used Lower Marker for Quantitation
Standard Curve Fit is Logarithmic
Show Data Aligned to Lower Marker

Integrator Settings

Integration Start Time [s] : 19
Integration End Time [s] : 69
Slope Threshold : 0.6
Height Threshold [FU] : 0.5
Area Threshold : 0.2
Width Threshold [s] : 0.5
Baseline Plateau [s] : 6

Filter Settings

Filter Width [s] : 0.5
Polynomial Order : 4

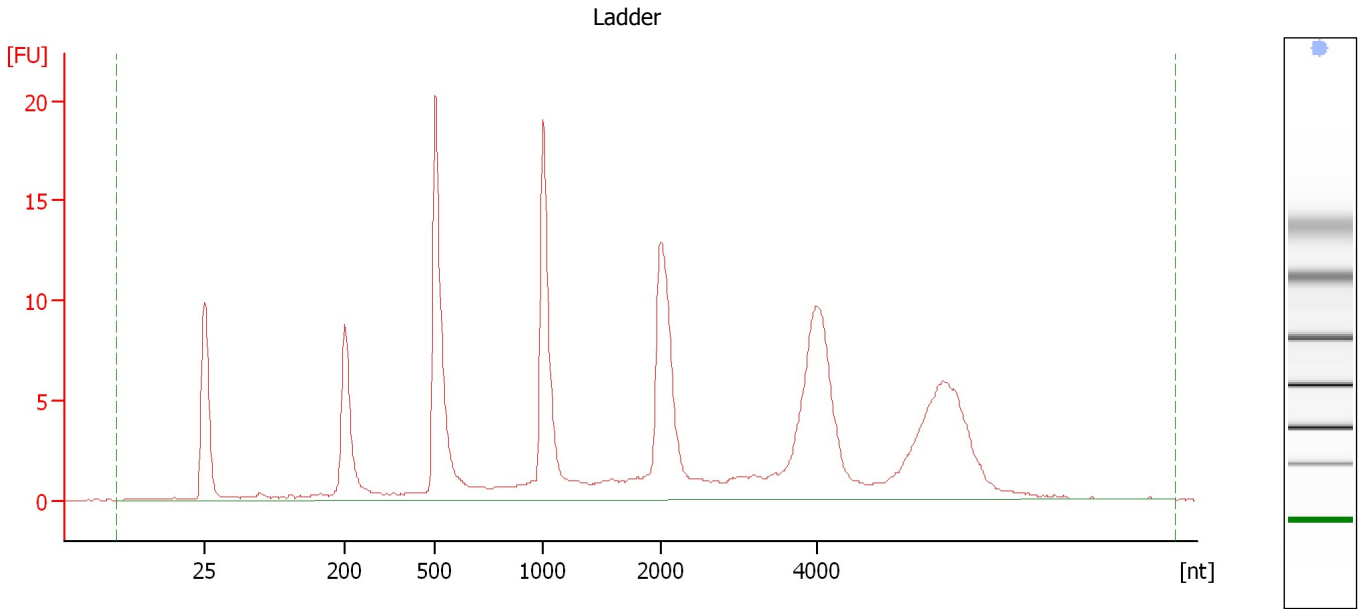
Ladder

Ladder Peak	Size
1	25
2	200
3	500
4	1000
5	2000
6	4000

Assay Class: Eukaryote Total RNA Nano
Data Path: C:\...ents and Settings\Bioanalyzer\2015-12-15\2015-12-15_001.xad

Created: 12/15/2015 10:56:15 AM
Modified: 12/15/2015 11:20:07 AM

Electropherogram Summary



Overall Results for Ladder

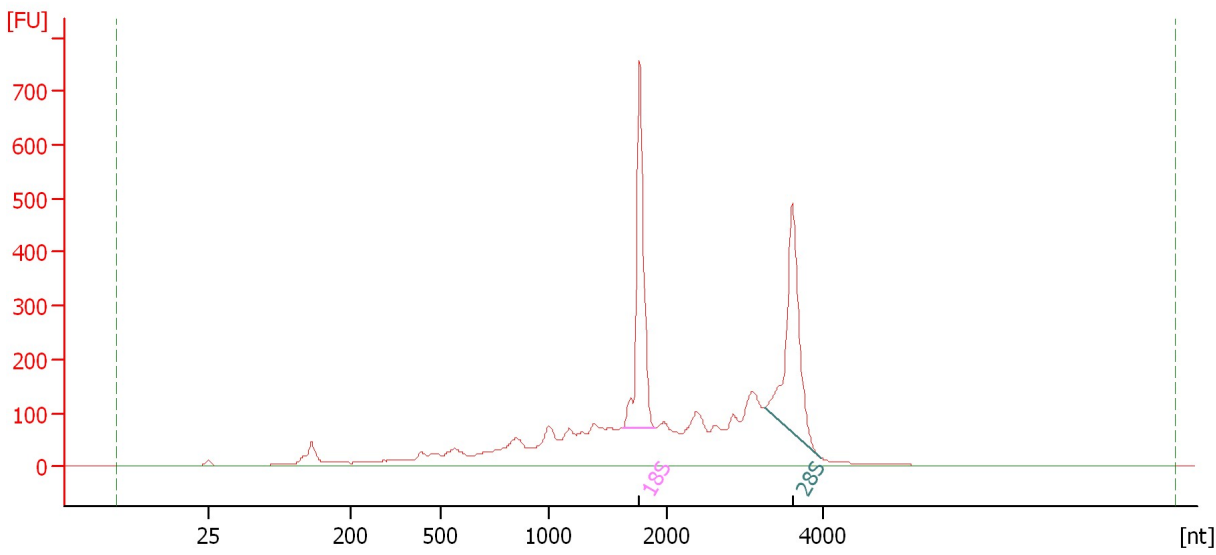
RNA Area:	187.2	Result Flagging Color:	
RNA Concentration:	150 ng/ μ l	Result Flagging Label:	All Other Samples

Assay Class: Eukaryote Total RNA Nano
Data Path: C:\...ents and Settings\Bioanalyzer\2015-12-15\2015-12-15_001.xad

Created: 12/15/2015 10:56:15 AM
Modified: 12/15/2015 11:20:07 AM

Electropherogram Summary Continued ...

Sample 13 [HiSeq 322 Total RNA QC]



Overall Results for sample 1 : Sample 13

RNA Area:	4,044.3	RNA Integrity Number (RIN):	7 (B.02.08)
RNA Concentration:	3,241 ng/μl	Result Flagging Color:	
rRNA Ratio [28s / 18s]:	1.0	Result Flagging Label:	RIN:7

Fragment table for sample 1 : Sample 13

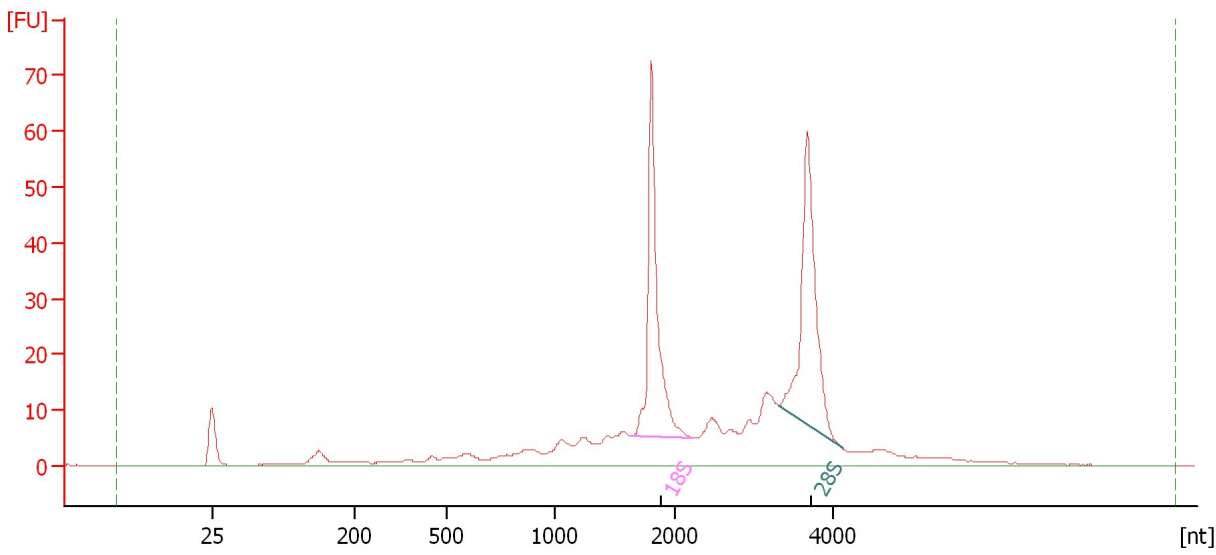
Name	Start Size [nt]	End Size [nt]	Area	% of total Area
18S	1,623	1,903	601.5	14.9
28S	3,242	3,950	581.5	14.4

Assay Class: Eukaryote Total RNA Nano
 Data Path: C:\...ents and Settings\Bioanalyzer\2015-12-15\2015-12-15_001.xad

Created: 12/15/2015 10:56:15 AM
 Modified: 12/15/2015 11:20:07 AM

Electropherogram Summary Continued ...

Sample 14 [HiSeq 322 Total RNA QC]



Overall Results for sample 2 : Sample 14

RNA Area:	409.0	RNA Integrity Number (RIN):	8.1 (B.02.08)
RNA Concentration:	328 ng/μl	Result Flagging Color:	
rRNA Ratio [28s / 18s]:	1.0	Result Flagging Label:	RIN: 8.10

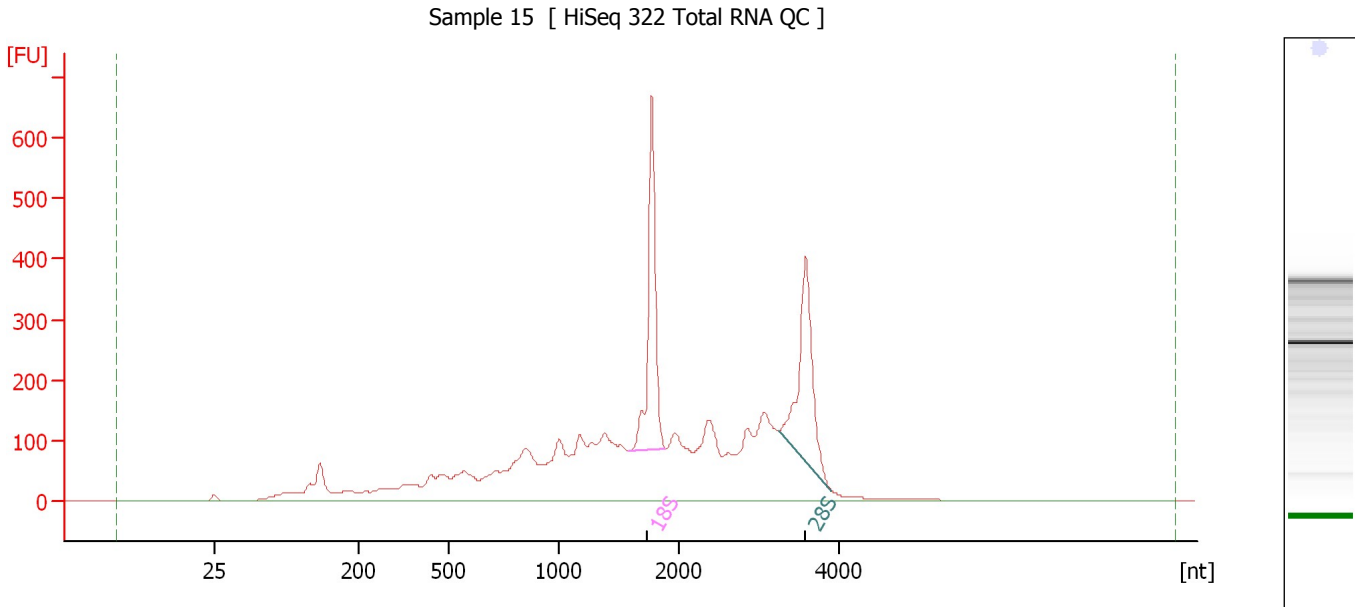
Fragment table for sample 2 : Sample 14

Name	Start Size [nt]	End Size [nt]	Area	% of total Area
18S	1,629	2,224	75.3	18.4
28S	3,318	4,114	76.5	18.7

Assay Class: Eukaryote Total RNA Nano
 Data Path: C:\...ents and Settings\Bioanalyzer\2015-12-15\2015-12-15_001.xad

Created: 12/15/2015 10:56:15 AM
 Modified: 12/15/2015 11:20:07 AM

Electropherogram Summary Continued ...



Overall Results for sample 3 : Sample 15

RNA Area:	4,940.0	RNA Integrity Number (RIN):	6.3 (B.02.08)
RNA Concentration:	3,959 ng/μl	Result Flagging Color:	
rRNA Ratio [28s / 18s]:	0.9	Result Flagging Label:	RIN: 6.30

Fragment table for sample 3 : Sample 15

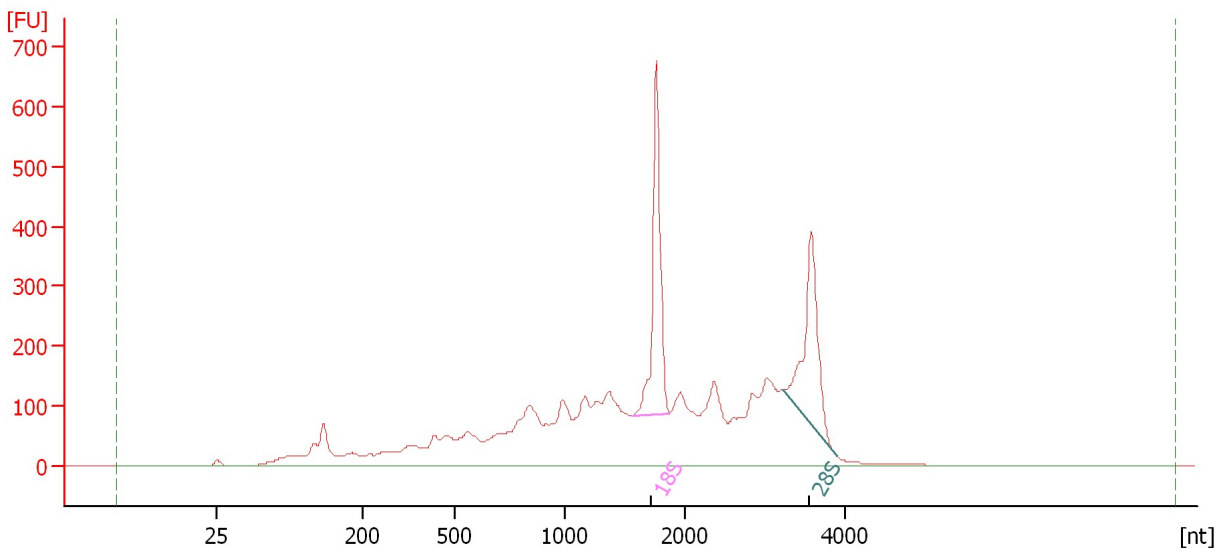
Name	Start Size [nt]	End Size [nt]	Area	% of total Area
18S	1,579	1,882	535.8	10.8
28S	3,248	3,920	467.1	9.5

Assay Class: Eukaryote Total RNA Nano
 Data Path: C:\...ents and Settings\Bioanalyzer\2015-12-15\2015-12-15_001.xad

Created: 12/15/2015 10:56:15 AM
 Modified: 12/15/2015 11:20:07 AM

Electropherogram Summary Continued ...

Sample 16 [HiSeq 322 Total RNA QC]



Overall Results for sample 4 : Sample 16

RNA Area:	5,273.6	RNA Integrity Number (RIN):	6.1 (B.02.08)
RNA Concentration:	4,226 ng/μl	Result Flagging Color:	
rRNA Ratio [28s / 18s]:	0.9	Result Flagging Label:	RIN: 6.10

Fragment table for sample 4 : Sample 16

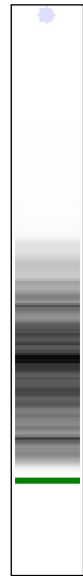
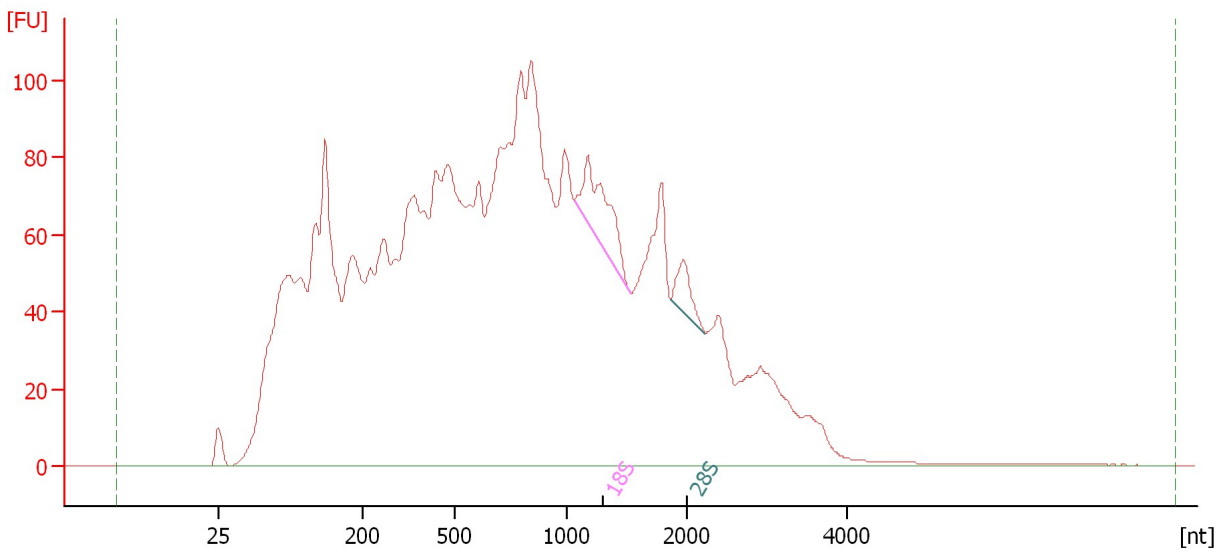
Name	Start Size [nt]	End Size [nt]	Area	% of total Area
18S	1,558	1,868	523.9	9.9
28S	3,230	3,885	446.2	8.5

Assay Class: Eukaryote Total RNA Nano
Data Path: C:\...ents and Settings\Bioanalyzer\2015-12-15\2015-12-15_001.xad

Created: 12/15/2015 10:56:15 AM
Modified: 12/15/2015 11:20:07 AM

Electropherogram Summary Continued ...

Sample 17 [HiSeq 322 Total RNA QC]



Overall Results for sample 5 : Sample 17

RNA Area:	3,883.7	RNA Integrity Number (RIN):	2.5 (B.02.08)
RNA Concentration:	3,112 ng/μl	Result Flagging Color:	
rRNA Ratio [28s / 18s]:	0.4	Result Flagging Label:	RIN: 2.50

Fragment table for sample 5 : Sample 17

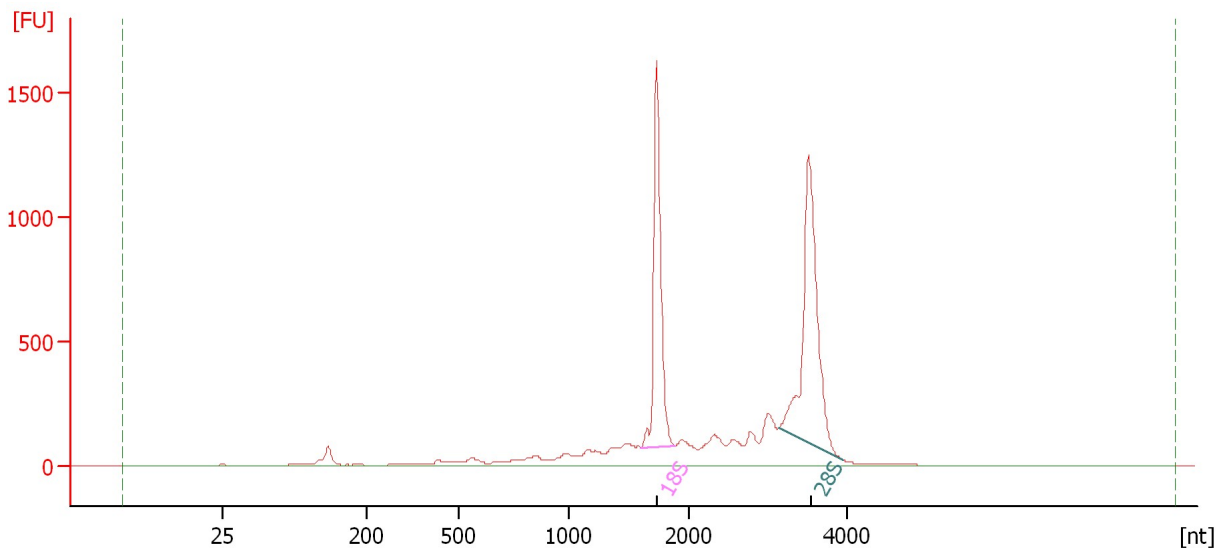
Name	Start Size [nt]	End Size [nt]	Area	% of total Area
18S	1,064	1,524	61.4	1.6
28S	1,860	2,229	22.1	0.6

Assay Class: Eukaryote Total RNA Nano
Data Path: C:\...ents and Settings\Bioanalyzer\2015-12-15\2015-12-15_001.xad

Created: 12/15/2015 10:56:15 AM
Modified: 12/15/2015 11:20:07 AM

Electropherogram Summary Continued ...

Sample 18 [HiSeq 322 Total RNA QC]



Overall Results for sample 6 : Sample 18

RNA Area: 6,289.3 RNA Integrity Number (RIN): 8.7 (B.02.08)
RNA Concentration: 5,040 ng/μl Result Flagging Color:
rRNA Ratio [28s / 18s]: 1.3 Result Flagging Label: RIN: 8.70

Fragment table for sample 6 : Sample 18

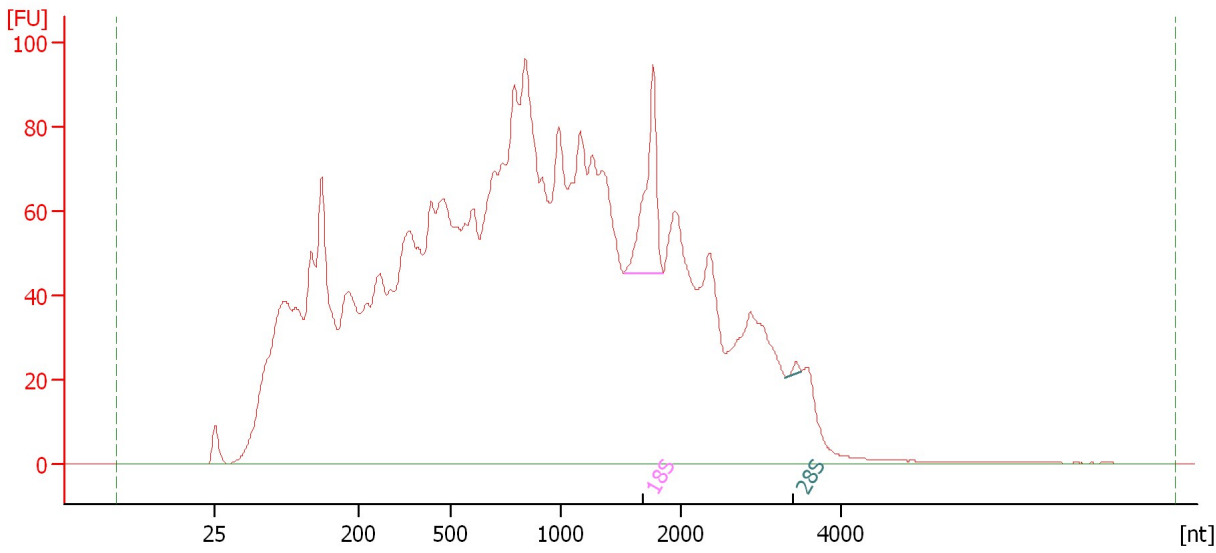
Name	Start Size [nt]	End Size [nt]	Area	% of total Area
18S	1,611	1,894	1,365.2	21.7
28S	3,137	3,938	1,750.1	27.8

Assay Class: Eukaryote Total RNA Nano
 Data Path: C:\...ents and Settings\Bioanalyzer\2015-12-15\2015-12-15_001.xad

Created: 12/15/2015 10:56:15 AM
 Modified: 12/15/2015 11:20:07 AM

Electropherogram Summary Continued ...

Sample 19 [HiSeq 322 Total RNA QC]



Overall Results for sample 7 : Sample 19

RNA Area:	3,476.9	RNA Integrity Number (RIN):	2.7 (B.02.08)
RNA Concentration:	2,786 ng/μl	Result Flagging Color:	
rRNA Ratio [28s / 18s]:	0.0	Result Flagging Label:	RIN: 2.70

Fragment table for sample 7 : Sample 19

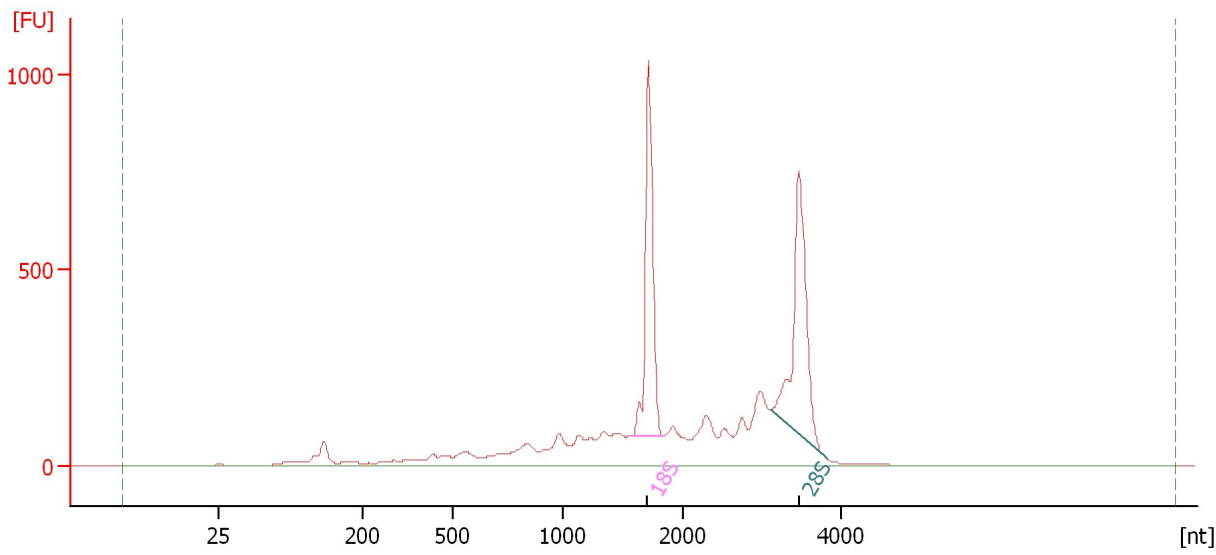
Name	Start Size [nt]	End Size [nt]	Area	% of total Area
18S	1,527	1,848	65.5	1.9
28S	3,313	3,515	1.7	0.0

Assay Class: Eukaryote Total RNA Nano
Data Path: C:\...ents and Settings\Bioanalyzer\2015-12-15\2015-12-15_001.xad

Created: 12/15/2015 10:56:15 AM
Modified: 12/15/2015 11:20:07 AM

Electropherogram Summary Continued ...

Sample 20 [HiSeq 322 Total RNA QC]



Overall Results for sample 8 : Sample 20

RNA Area:	5,073.0	RNA Integrity Number (RIN):	7.4 (B.02.08)
RNA Concentration:	4,066 ng/μl	Result Flagging Color:	
rRNA Ratio [28s / 18s]:	1.1	Result Flagging Label:	RIN: 7.40

Fragment table for sample 8 : Sample 20

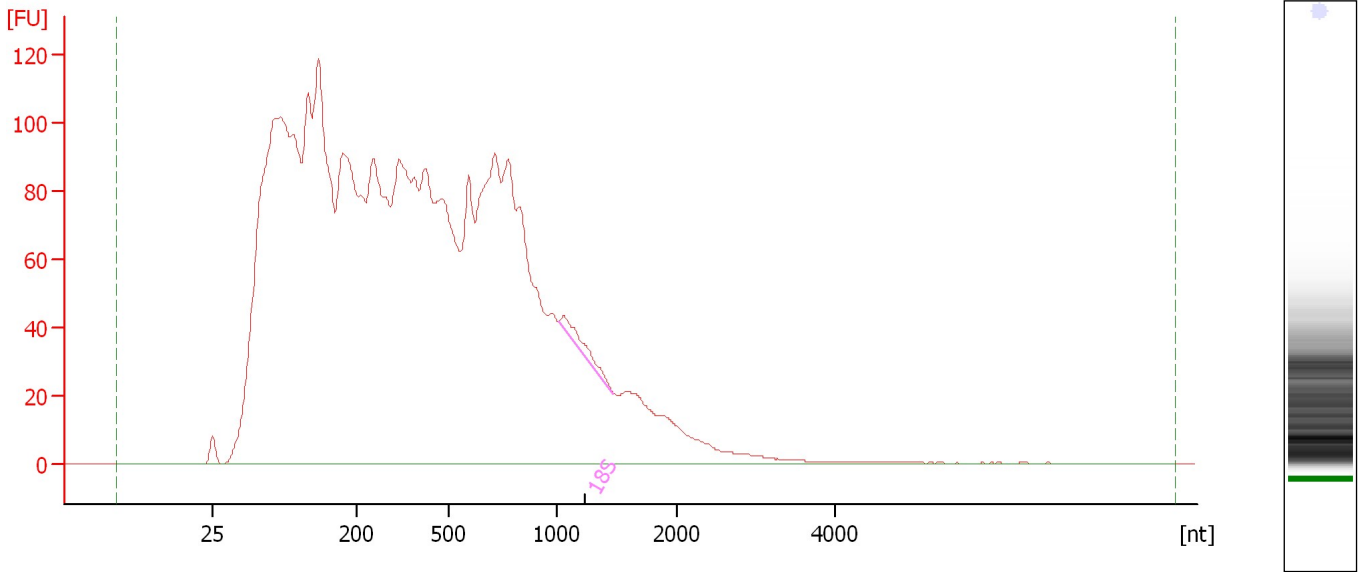
Name	Start Size [nt]	End Size [nt]	Area	% of total Area
18S	1,579	1,847	828.1	16.3
28S	3,113	3,826	915.7	18.1

Assay Class: Eukaryote Total RNA Nano
Data Path: C:\...ents and Settings\Bioanalyzer\2015-12-15\2015-12-15_001.xad

Created: 12/15/2015 10:56:15 AM
Modified: 12/15/2015 11:20:07 AM

Electropherogram Summary Continued ...

Sample 21 [HiSeq 322 Total RNA QC]



Overall Results for sample 9 : Sample 21

RNA Area:	4,053.7	RNA Integrity Number (RIN):	2 (B.02.08)
RNA Concentration:	3,249 ng/μl	Result Flagging Color:	
rRNA Ratio [28s / 18s]:	0.0	Result Flagging Label:	RIN:2

Fragment table for sample 9 : Sample 21

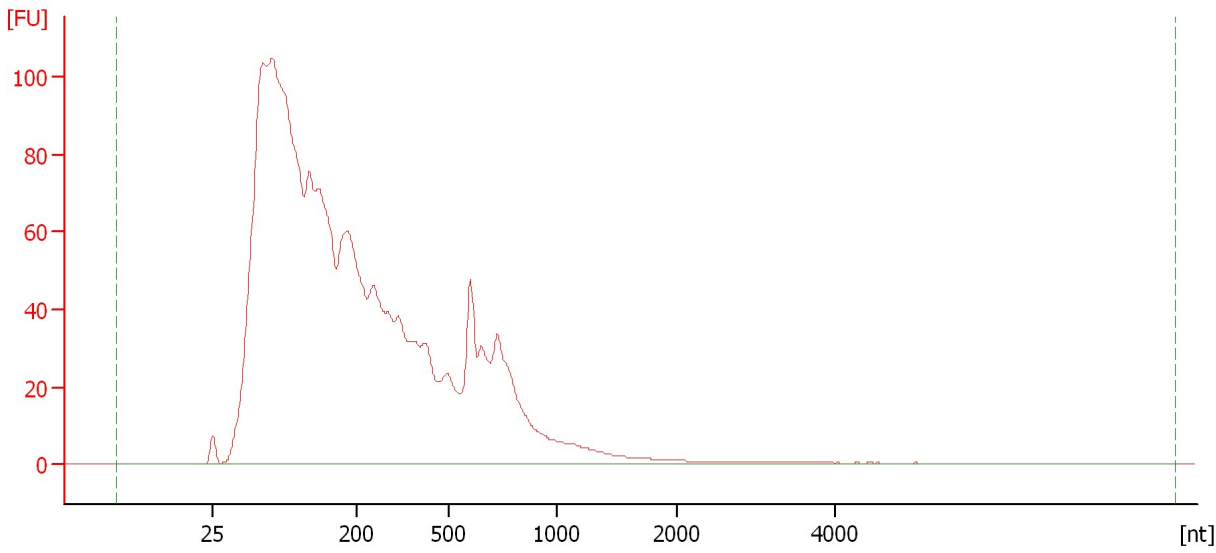
Name	Start Size [nt]	End Size [nt]	Area	% of total Area
18S	1,014	1,470	14.9	0.4

Assay Class: Eukaryote Total RNA Nano
Data Path: C:\...ents and Settings\Bioanalyzer\2015-12-15\2015-12-15_001.xad

Created: 12/15/2015 10:56:15 AM
Modified: 12/15/2015 11:20:07 AM

Electropherogram Summary Continued ...

Sample 22 [HiSeq 322 Total RNA QC]



Overall Results for sample 10 : Sample 22

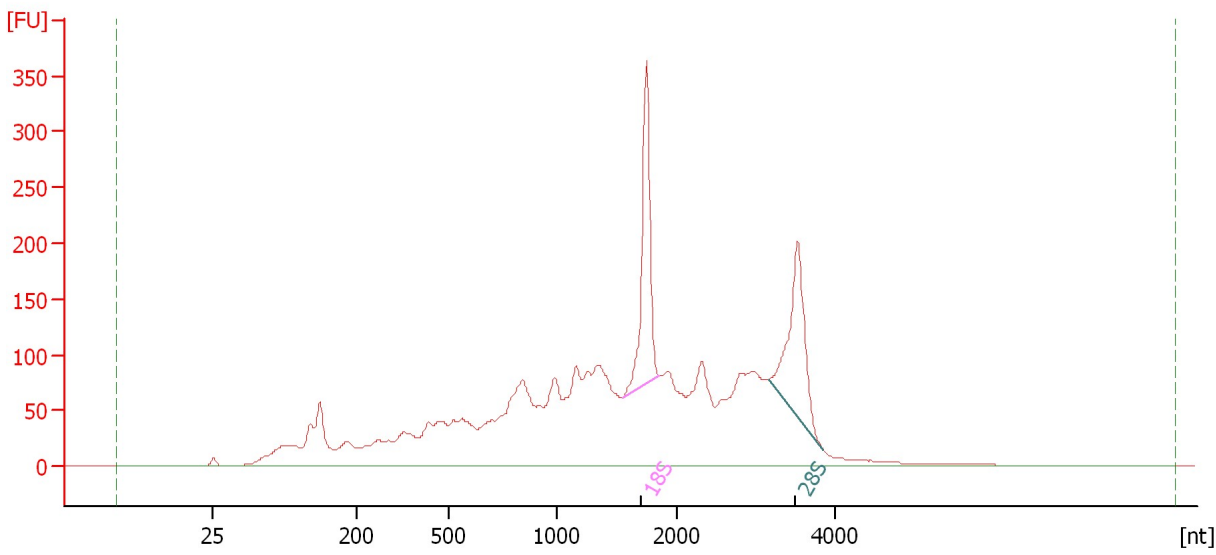
RNA Area:	2,235.8	RNA Integrity Number (RIN):	2.1 (B.02.08)
RNA Concentration:	1,792 ng/μl	Result Flagging Color:	
rRNA Ratio [28s / 18s]:	0.0	Result Flagging Label:	RIN: 2.10

Assay Class: Eukaryote Total RNA Nano
 Data Path: C:\...ents and Settings\Bioanalyzer\2015-12-15\2015-12-15_001.xad

Created: 12/15/2015 10:56:15 AM
 Modified: 12/15/2015 11:20:07 AM

Electropherogram Summary Continued ...

Sample 23 [HiSeq 322 Total RNA QC]



Overall Results for sample 11 : Sample 23

RNA Area:	3,802.3	RNA Integrity Number (RIN):	5.5 (B.02.08)
RNA Concentration:	3,047 ng/μl	Result Flagging Color:	
rRNA Ratio [28s / 18s]:	0.9	Result Flagging Label:	RIN: 5.50

Fragment table for sample 11 : Sample 23

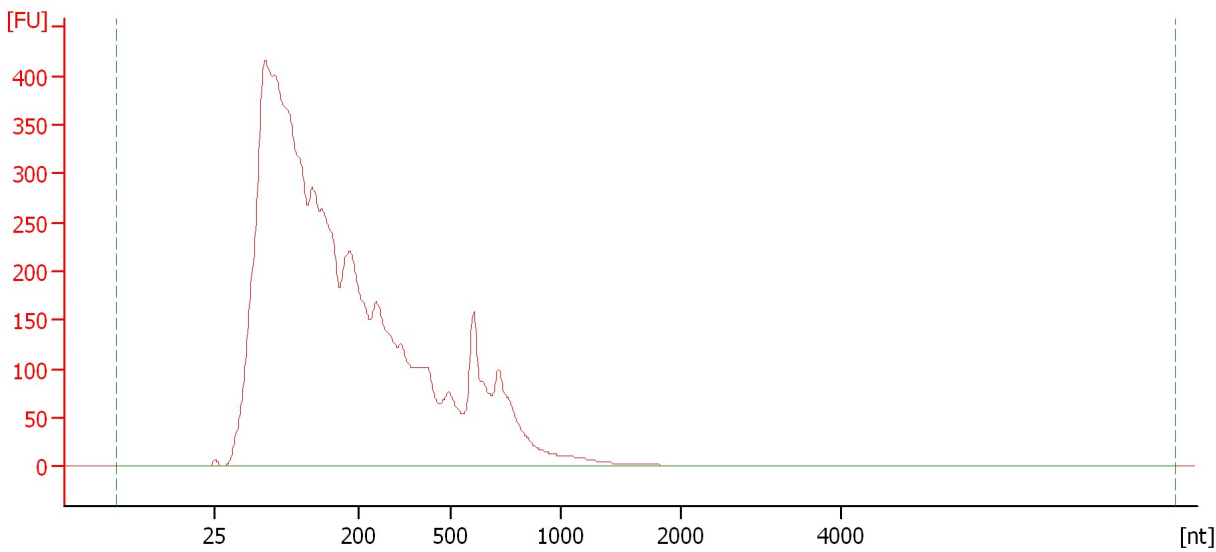
Name	Start Size [nt]	End Size [nt]	Area	% of total Area
18S	1,550	1,854	274.3	7.2
28S	3,155	3,842	253.6	6.7

Assay Class: Eukaryote Total RNA Nano
Data Path: C:\...ents and Settings\Bioanalyzer\2015-12-15\2015-12-15_001.xad

Created: 12/15/2015 10:56:15 AM
Modified: 12/15/2015 11:20:07 AM

Electropherogram Summary Continued ...

Sample 24 [HiSeq 322 Total RNA QC]



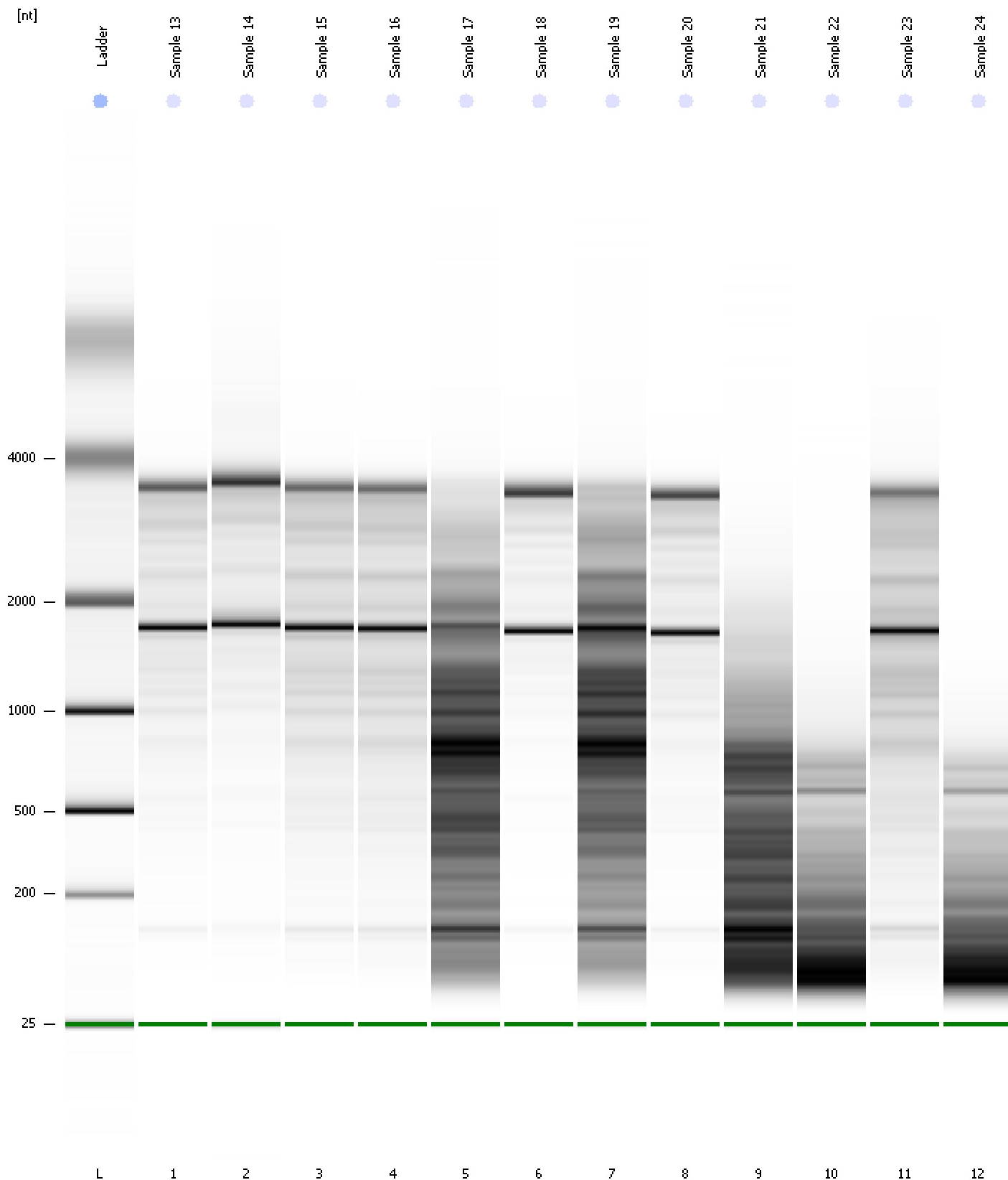
Overall Results for sample 12 : Sample 24

RNA Area:	7,953.6	RNA Integrity Number (RIN):	2.2 (B.02.08)
RNA Concentration:	6,374 ng/ μ l	Result Flagging Color:	
rRNA Ratio [28s / 18s]:	0.0	Result Flagging Label:	RIN: 2.20

Assay Class: Eukaryote Total RNA Nano
Data Path: C:\...ents and Settings\Bioanalyzer\2015-12-15\2015-12-15_001.xad

Created: 12/15/2015 10:56:15 AM
Modified: 12/15/2015 11:20:07 AM

Gel Image



Assay Class: Eukaryote Total RNA Nano
 Data Path: C:\...ents and Settings\Bioanalyzer\2015-12-15\2015-12-15_001.xad

Created: 12/15/2015 10:56:15 AM
 Modified: 12/15/2015 11:20:07 AM

Run Logbook

Description	Number	Source	Category	Sub Category	Time	Time Zone	User	Host
Run ended on port 1 (Number of wells acquired: 13)		Instrument	Run		12/15/2015 11:20:04 AM	(GMT --08:00) Pacific Standard Time	UC Davis	D8XSMGH1
Run started on port 1 (File: C:\Documents and Settings\Bioanalyzer\2015-12-15\2015-12-15_001.xad)		Instrument	Run		12/15/2015 10:56:21 AM	(GMT --08:00) Pacific Standard Time	UC Davis	D8XSMGH1
Product Number : G2938B		Instrument	Run		12/15/2015 10:56:21 AM	(GMT --08:00) Pacific Standard Time	UC Davis	D8XSMGH1
Name :		Instrument	Run		12/15/2015 10:56:21 AM	(GMT --08:00) Pacific Standard Time	UC Davis	D8XSMGH1
Vendor : Agilent Technologies		Instrument	Run		12/15/2015 10:56:21 AM	(GMT --08:00) Pacific Standard Time	UC Davis	D8XSMGH1
Serial# : DE13701086		Instrument	Run		12/15/2015 10:56:21 AM	(GMT --08:00) Pacific Standard Time	UC Davis	D8XSMGH1
Firmware : C.01.069		Instrument	Run		12/15/2015 10:56:21 AM	(GMT --08:00) Pacific Standard Time	UC Davis	D8XSMGH1
Cartridge : Electrode		Instrument	Run		12/15/2015 10:56:21 AM	(GMT --08:00) Pacific Standard Time	UC Davis	D8XSMGH1