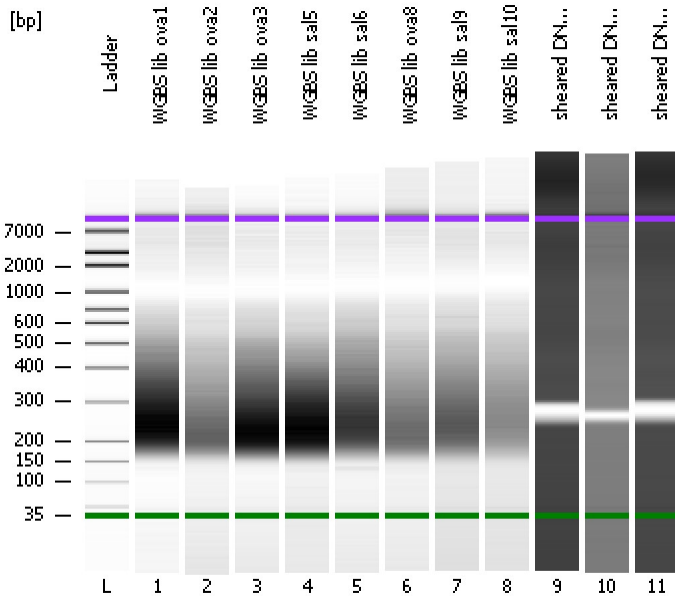


Assay Class: High Sensitivity DNA Assay  
Data Path: C:\...ents and Settings\Bioanalyzer\2015-12-16\2015-12-16\_003.xad

Created: 12/16/2015 4:49:06 PM  
Modified: 12/16/2015 5:32:39 PM

Electrophoresis File Run Summary



Instrument Information:

Instrument Name: DE13701086      Firmware: C.01.069  
Serial#: DE13701086      Type: G2938B

Assay Information:

Assay Origin Path: C:\Program Files\Agilent\2100 bioanalyzer\2100 expert\assays\dsDNA\High Sensitivity DNA.xsy  
Assay Class: High Sensitivity DNA Assay  
Version: 1.03  
Assay Comments: Copyright © 2003-2010 Agilent Technologies

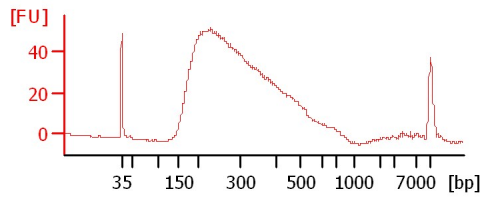
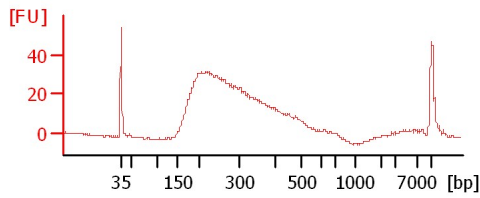
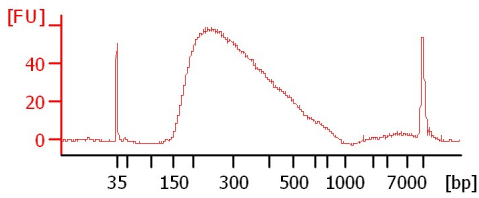
Chip Information:

Chip Lot #:   
Reagent Kit Lot #:   
Chip Comments:

WGBS lib ova1

WGBS lib ova2

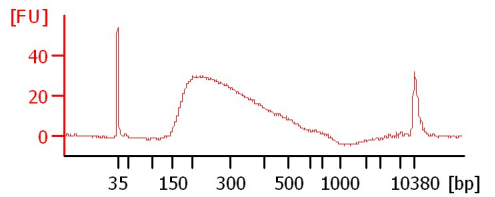
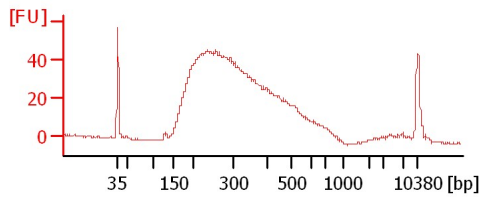
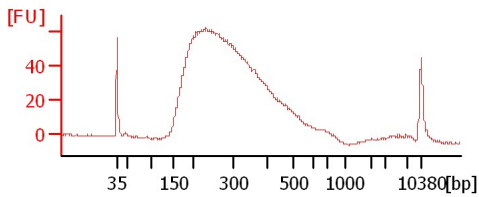
WGBS lib ova3



WGBS lib sal5

WGBS lib sal6

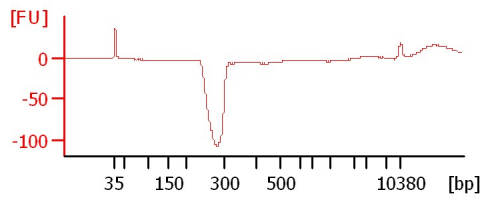
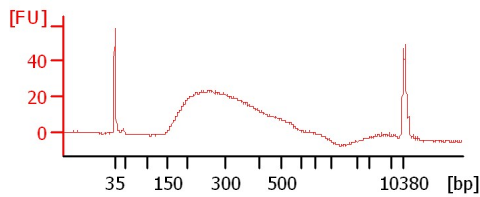
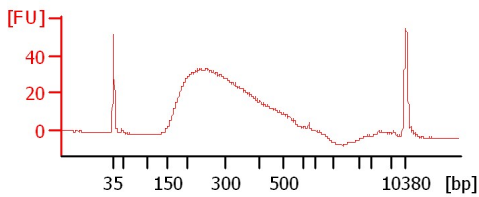
WGBS lib ova8



WGBS lib sal9

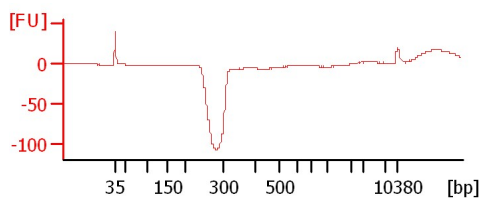
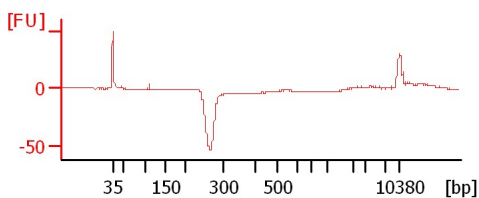
WGBS lib sal10

sheared DNA input 2min fix



sheared DNA input 5min fix

sheared DNA input 10min fix



Assay Class: High Sensitivity DNA Assay  
 Data Path: C:\...ents and Settings\Bioanalyzer\2015-12-16\2015-12-16\_003.xad

Created: 12/16/2015 4:49:06 PM  
 Modified: 12/16/2015 5:32:39 PM

**Electrophoresis File Run Summary (Chip Summary)**

Sample Name	Sample Comment	Rest. Digest	Status	Observation	Result Label	Result Color
WGBS lib ova1		<input type="checkbox"/>	✓			
WGBS lib ova2		<input type="checkbox"/>	✓			
WGBS lib ova3		<input type="checkbox"/>	✓			
WGBS lib sal5		<input type="checkbox"/>	✓			
WGBS lib sal6		<input type="checkbox"/>	✓			
WGBS lib ova8		<input type="checkbox"/>	✓			
WGBS lib sal9		<input type="checkbox"/>	✓			
WGBS lib sal10		<input type="checkbox"/>	✓			
sheared DNA input 2min fix		<input type="checkbox"/>	✓			
sheared DNA input 5min fix		<input type="checkbox"/>	✓			
sheared DNA input 10min fix		<input type="checkbox"/>	✓			
Ladder		<input type="checkbox"/>	✓			

**Chip Lot #**

**Reagent Kit Lot #**

**Chip Comments :**

Assay Class: High Sensitivity DNA Assay  
Data Path: C:\...ents and Settings\Bioanalyzer\2015-12-16\2015-12-16\_003.xad

Created: 12/16/2015 4:49:06 PM  
Modified: 12/16/2015 5:32:39 PM

**Electrophoresis Assay Details**

**General Analysis Settings**

Number of Available Sample and Ladder Wells (Max.) : 12  
Minimum Visible Range [s] : 32  
Maximum Visible Range [s] : 138  
Start Analysis Time Range [s] : 33  
End Analysis Time Range [s] : 137.5  
Ladder Concentration [pg/μl] : 1950  
Uses Standard Area for Ladder Fragments  
Lower Marker Concentration [pg/μl] : 125  
Upper Marker Concentration [pg/μl] : 75  
Used Upper Marker for Quantitation  
Standard Curve Fit is Point to Point  
Show Data Aligned to Lower and Upper Marker

**Integrator Settings**

Integration Start Time [s] : 33.05  
Integration End Time [s] : 137  
Slope Threshold : 0.8  
Height Threshold [FU] : 5  
Area Threshold : 0.1  
Width Threshold [s] : 0.6  
Baseline Plateau [s] : 0.5

**Filter Settings**

Filter Width [s] : 0.5  
Polynomial Order : 4

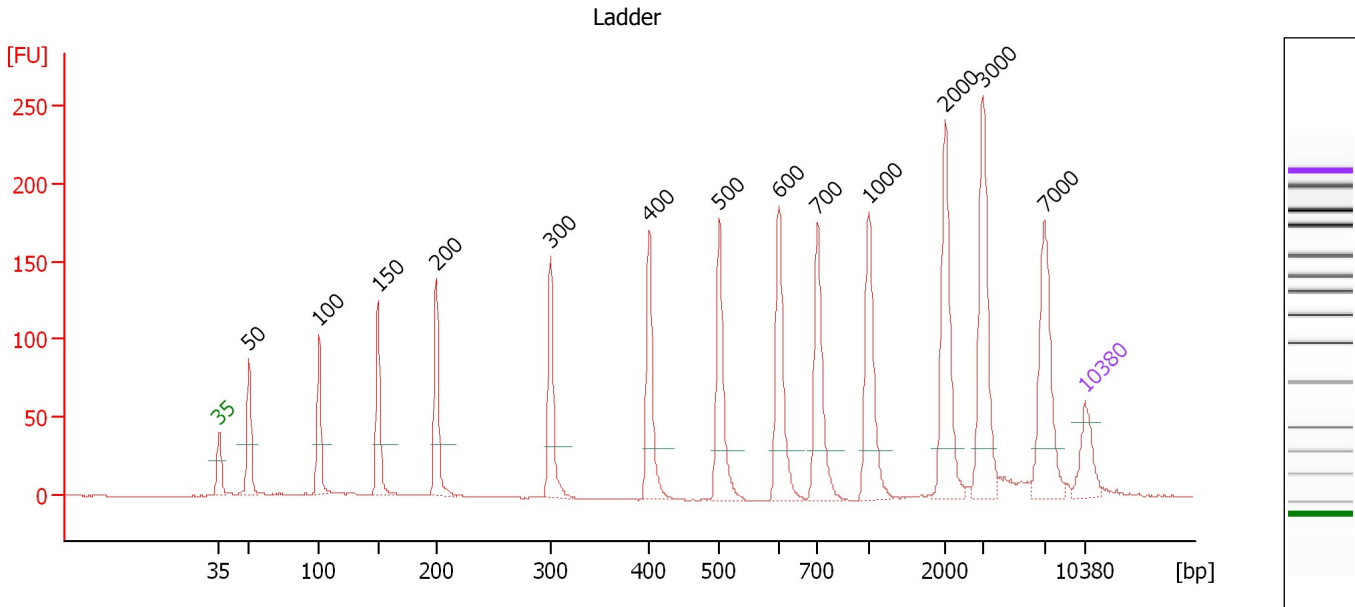
**Ladder**

Ladder Peak	Size	Area
1	35	160
2	50	210
3	100	208
4	150	221
5	200	242
6	300	270
7	400	305
8	500	306
9	600	336
10	700	321
11	1000	366
12	2000	413
13	3000	411
14	7000	400
15	10380	214

Assay Class: High Sensitivity DNA Assay  
 Data Path: C:\...ents and Settings\Bioanalyzer\2015-12-16\2015-12-16\_003.xad

Created: 12/16/2015 4:49:06 PM  
 Modified: 12/16/2015 5:32:39 PM

**Electropherogram Summary**



**Overall Results for Ladder**

Noise: 0.3

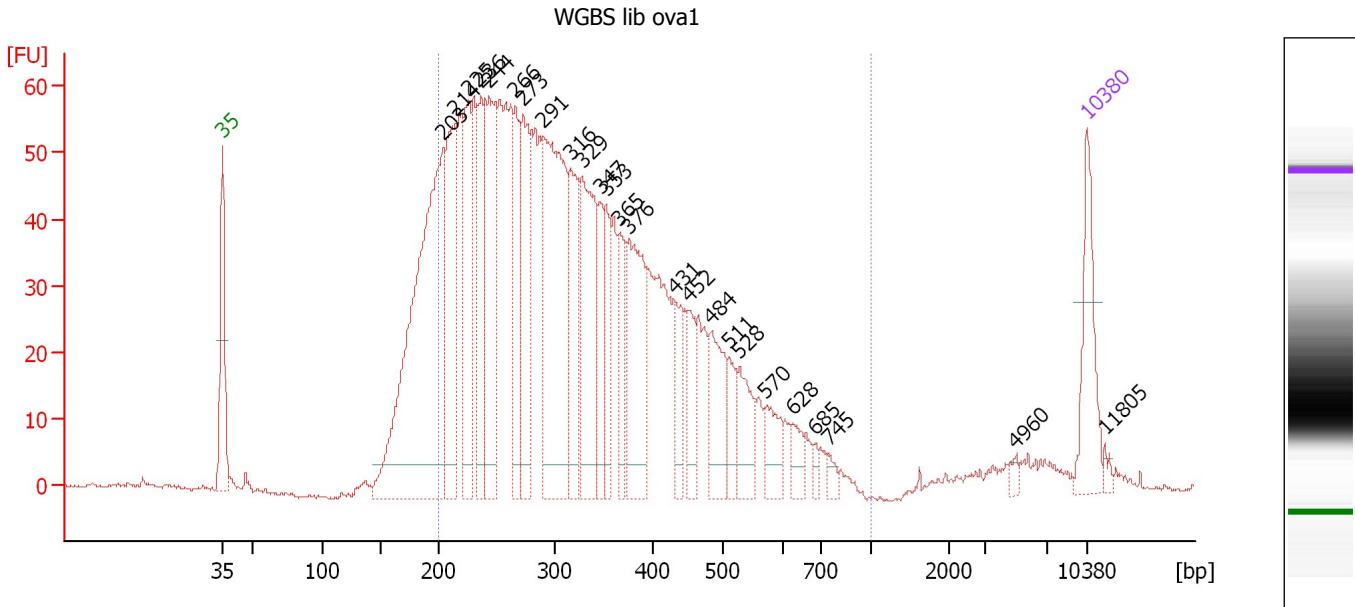
**Peak table for Ladder**

Peak	Size [bp]	Conc. [pg/μl]	Molarity [pmol/l]	Observations	Aligned Migration Time [s]
1	35	125.00	5,411.3	Lower Marker	43.00
2	50	150.00	4,545.5	Ladder Peak	45.41
3	100	150.00	2,272.7	Ladder Peak	51.10
4	150	150.00	1,515.2	Ladder Peak	55.84
5	200	150.00	1,136.4	Ladder Peak	60.54
6	300	150.00	757.6	Ladder Peak	69.81
7	400	150.00	568.2	Ladder Peak	77.78
8	500	150.00	454.5	Ladder Peak	83.47
9	600	150.00	378.8	Ladder Peak	88.26
10	700	150.00	324.7	Ladder Peak	91.41
11	1,000	150.00	227.3	Ladder Peak	95.54
12	2,000	150.00	113.6	Ladder Peak	101.71
13	3,000	150.00	75.8	Ladder Peak	104.72
14	7,000	150.00	32.5	Ladder Peak	109.72
15	10,380	75.00	10.9	Upper Marker	113.00

Assay Class: High Sensitivity DNA Assay  
 Data Path: C:\...ents and Settings\Bioanalyzer\2015-12-16\2015-12-16\_003.xad

Created: 12/16/2015 4:49:06 PM  
 Modified: 12/16/2015 5:32:39 PM

**Electropherogram Summary Continued ...**



**Overall Results for sample 1 : WGBS lib ova1**

Number of peaks found: 25                      Corr. Area 1: 1,603.5  
 Noise: 0.4

**Peak table for sample 1 : WGBS lib ova1**

Peak	Size [bp]	Conc. [pg/μl]	Molarity [pmol/l]	Observations	Aligned Migration Time [s]
1	35	125.00	5,411.3	Lower Marker	43.00
2	203	675.65	5,030.7		60.87
3	214	204.58	1,450.2		61.82
4	225	169.58	1,140.1		62.90
5	236	157.49	1,010.7		63.89
6	244	205.57	1,278.9		64.58
7	266	122.32	697.0		66.65
8	273	179.73	997.9		67.30
9	291	382.45	1,994.2		68.94
10	316	133.14	638.2		71.09
11	329	206.55	952.5		72.09
12	347	76.77	335.2		73.55
13	353	73.56	315.8		74.03
14	365	65.71	272.5		75.02
15	376	167.47	675.5		75.84
16	431	60.33	212.0		79.55
17	452	53.57	179.4		80.76
18	484	84.95	265.8		82.57
19	511	37.32	110.7		84.00
20	528	62.31	178.8		84.82
21	570	45.94	122.0		86.85
22	628	23.06	55.7		89.13
23	685	9.90	21.9		90.95
24	745	10.30	21.0		92.03
25	4,960	7.26	2.2		107.17

Assay Class: High Sensitivity DNA Assay  
 Data Path: C:\...ents and Settings\Bioanalyzer\2015-12-16\2015-12-16\_003.xad

Created: 12/16/2015 4:49:06 PM  
 Modified: 12/16/2015 5:32:39 PM

### Electropherogram Summary Continued ...

#### ... Peak table for sample 1 : WGBS lib ova1

Peak	Size [bp]	Conc. [pg/μl]	Molarity [pmol/l]	Observations	Aligned Migration Time [s]
26	10,380	75.00	10.9	Upper Marker	113.00
27	11,805	0.00	0.0		114.38

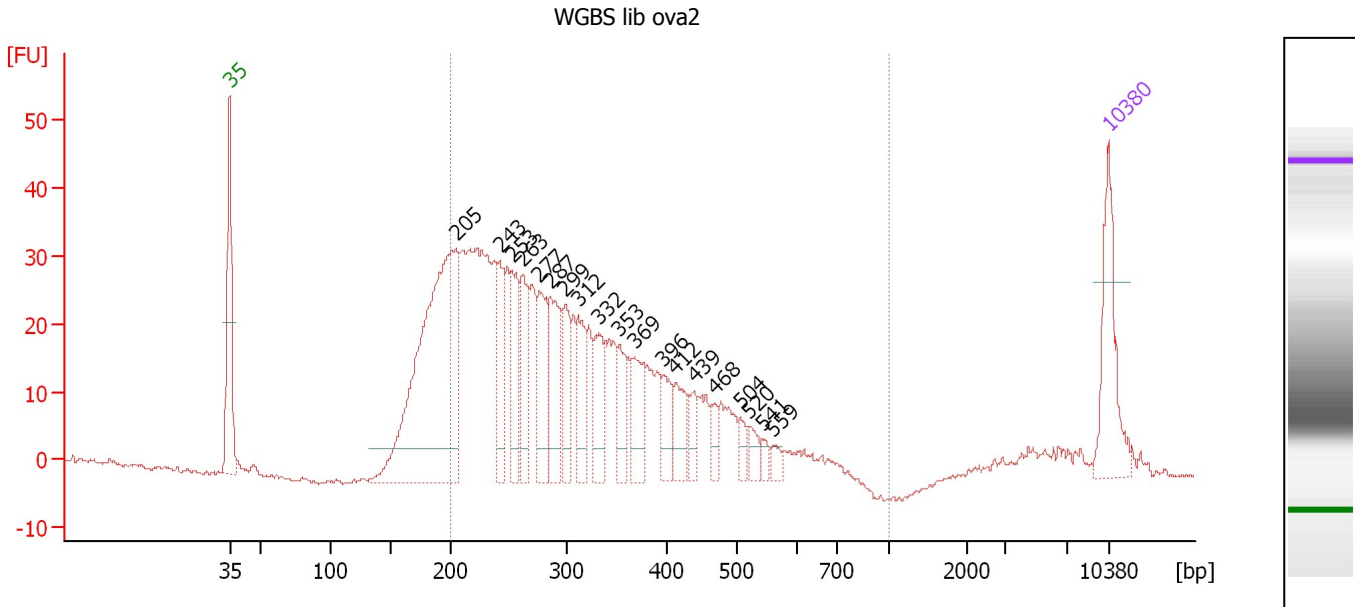
#### Region table for sample 1 : WGBS lib ova1

From [bp]	To [bp]	Average Size [bp]	Corr. Area	Molarity [pmol/l]	Co Conc. lor [pg/μl]	% of Total	Size distribution in CV [%]
200	1,000	338	1,603.5	18,800.9	3,696.63	86	33.2

Assay Class: High Sensitivity DNA Assay  
 Data Path: C:\...ents and Settings\Bioanalyzer\2015-12-16\2015-12-16\_003.xad

Created: 12/16/2015 4:49:06 PM  
 Modified: 12/16/2015 5:32:39 PM

**Electropherogram Summary Continued ...**



**Overall Results for sample 2 : WGBS lib ova2**

Number of peaks found: 19      Corr. Area 1: 732.6  
 Noise: 0.4

**Peak table for sample 2 : WGBS lib ova2**

Peak	Size [bp]	Conc. [pg/μl]	Molarity [pmol/l]	Observations	Aligned Migration Time [s]
1	35	125.00	5,411.3	Lower Marker	43.00
2	205	541.84	4,004.1		61.01
3	243	71.10	443.2		64.54
4	253	81.17	485.8		65.47
5	263	86.36	497.9		66.36
6	277	94.03	514.3		67.68
7	287	96.37	509.4		68.57
8	299	59.90	303.1		69.76
9	312	60.68	295.1		70.74
10	332	66.72	304.1		72.39
11	353	47.55	204.0		74.05
12	369	53.68	220.6		75.28
13	396	37.46	143.2		77.49
14	412	41.30	151.9		78.47
15	439	23.28	80.4		80.00
16	468	18.82	60.9		81.65
17	504	14.18	42.7		83.65
18	520	17.26	50.3		84.41
19	541	9.35	26.2		85.43
20	559	10.78	29.2		86.28
21	10,380	75.00	10.9	Upper Marker	113.00

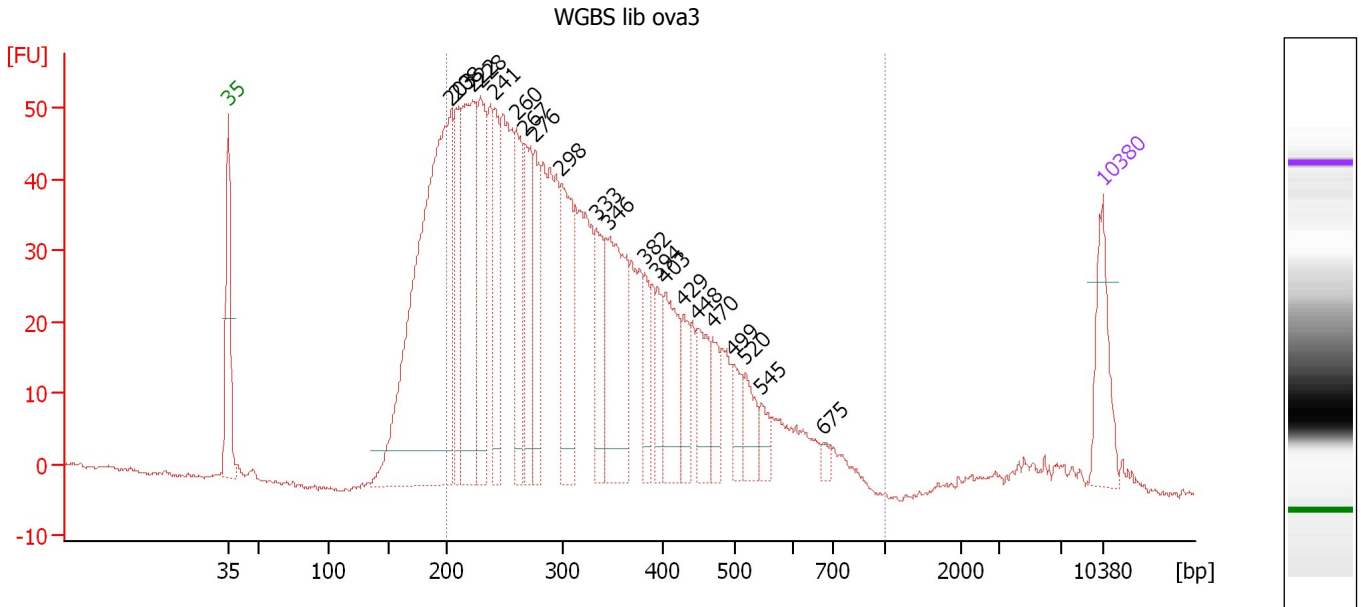
**Region table for sample 2 : WGBS lib ova2**

From [bp]	To [bp]	Average Size [bp]	Corr. Area	Molarity [pmol/l]	Co Conc. [pg/μl]	% of Total	Size distribution in CV [%]
200	1,000	316	732.6	9,082.1	1,710.86	81	30.3

Assay Class: High Sensitivity DNA Assay  
 Data Path: C:\...ents and Settings\Bioanalyzer\2015-12-16\2015-12-16\_003.xad

Created: 12/16/2015 4:49:06 PM  
 Modified: 12/16/2015 5:32:39 PM

**Electropherogram Summary Continued ...**



**Overall Results for sample 3 : WGBS lib ova3**

Number of peaks found: 21                      Corr. Area 1: 1,338.5  
 Noise: 0.3

**Peak table for sample 3 : WGBS lib ova3**

Peak	Size [bp]	Conc. [pg/μl]	Molarity [pmol/l]	Observations	Aligned Migration Time [s]
1	35	125.00	5,411.3	Lower Marker	43.00
2	203	923.11	6,886.5		60.83
3	208	156.77	1,143.6		61.26
4	222	340.45	2,323.8		62.58
5	228	207.81	1,378.5		63.18
6	241	140.89	884.6		64.37
7	260	164.85	960.0		66.12
8	267	156.24	886.3		66.76
9	276	113.46	623.3		67.57
10	298	197.75	1,004.2		69.66
11	333	104.68	475.7		72.48
12	346	249.97	1,093.8		73.50
13	382	55.47	220.3		76.32
14	394	50.20	192.8		77.34
15	403	115.96	435.5		77.98
16	429	50.75	179.3		79.43
17	448	74.47	252.1		80.50
18	470	41.91	135.1		81.78
19	499	37.14	112.7		83.44
20	520	47.62	138.8		84.42
21	545	27.26	75.8		85.61
22	675	9.86	22.1		90.61
23	10,380	75.00	10.9	Upper Marker	113.00



Assay Class: High Sensitivity DNA Assay  
Data Path: C:\...ents and Settings\Bioanalyzer\2015-12-16\2015-12-16\_003.xad

Created: 12/16/2015 4:49:06 PM  
Modified: 12/16/2015 5:32:39 PM

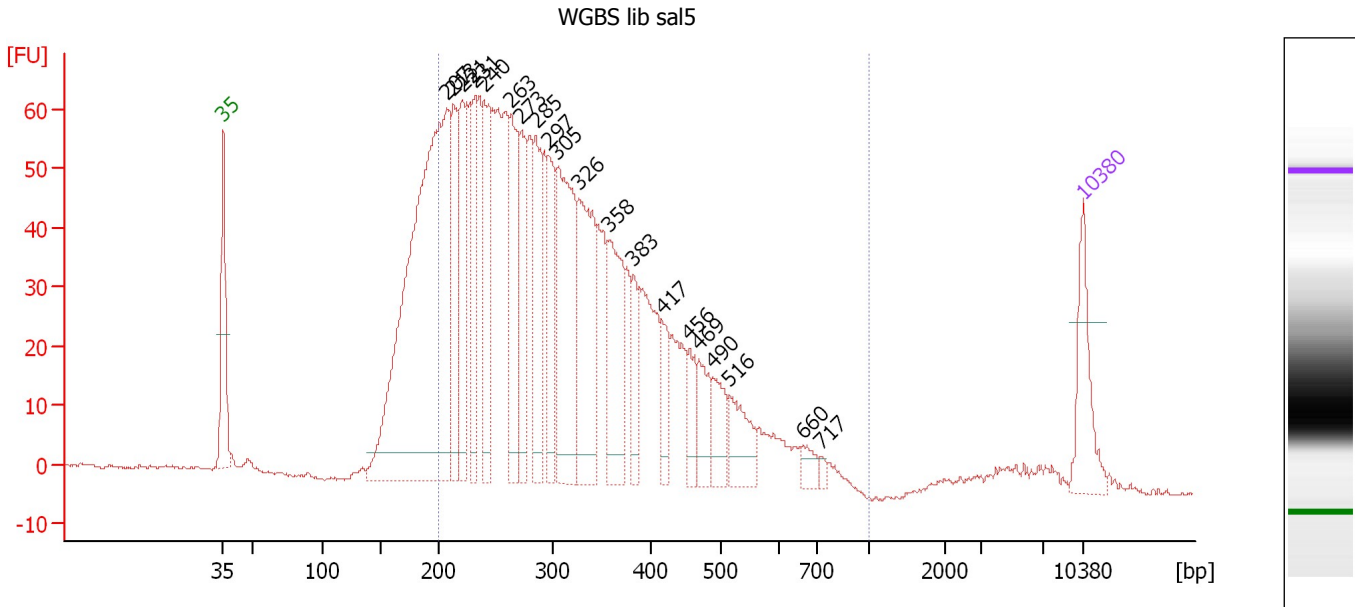
**Electropherogram Summary Continued ...****... Region table for sample 3 : WGBS lib ova3**

<b>From [bp]</b>	<b>To [bp]</b>	<b>Average Size [bp]</b>	<b>Corr. Area</b>	<b>Molarity [pmol/l]</b>	<b>Co Conc. lor [pg/μl]</b>	<b>% of Total</b>	<b>Size distribution in CV [%]</b>
200	1,000	332	1,338.5	19,418.2	■ 3,754.55	83	33.5

Assay Class: High Sensitivity DNA Assay  
 Data Path: C:\...ents and Settings\Bioanalyzer\2015-12-16\2015-12-16\_003.xad

Created: 12/16/2015 4:49:06 PM  
 Modified: 12/16/2015 5:32:39 PM

**Electropherogram Summary Continued ...**



**Overall Results for sample 4 : WGBS lib sal5**

Number of peaks found: 20                      Corr. Area 1: 1,605.9  
 Noise: 0.3

**Peak table for sample 4 : WGBS lib sal5**

Peak	Size [bp]	Conc. [pg/μl]	Molarity [pmol/l]	Observations	Aligned Migration Time [s]
1	35	125.00	5,411.3	Lower Marker	43.00
2	207	1,087.00	7,955.1		61.19
3	213	196.34	1,395.8		61.76
4	221	158.10	1,085.8		62.45
5	231	155.90	1,020.8		63.45
6	240	185.12	1,169.5		64.23
7	263	175.90	1,012.4		66.41
8	273	137.40	763.6		67.27
9	285	165.92	881.2		68.45
10	297	128.41	655.1		69.53
11	305	306.73	1,525.3		70.18
12	326	244.54	1,134.9		71.92
13	358	182.31	771.5		74.44
14	383	57.41	227.4		76.39
15	417	48.99	178.1		78.74
16	456	46.54	154.8		80.95
17	469	60.15	194.1		81.73
18	490	59.50	184.0		82.91
19	516	71.37	209.5		84.25
20	660	21.57	49.5		90.16
21	717	6.99	14.8		91.64
22	10,380	75.00	10.9	Upper Marker	113.00


Assay Class: High Sensitivity DNA Assay  
Data Path: C:\...ents and Settings\Bioanalyzer\2015-12-16\2015-12-16\_003.xad

Created: 12/16/2015 4:49:06 PM  
Modified: 12/16/2015 5:32:39 PM

**Electropherogram Summary Continued ...**

... Region table for sample 4 :

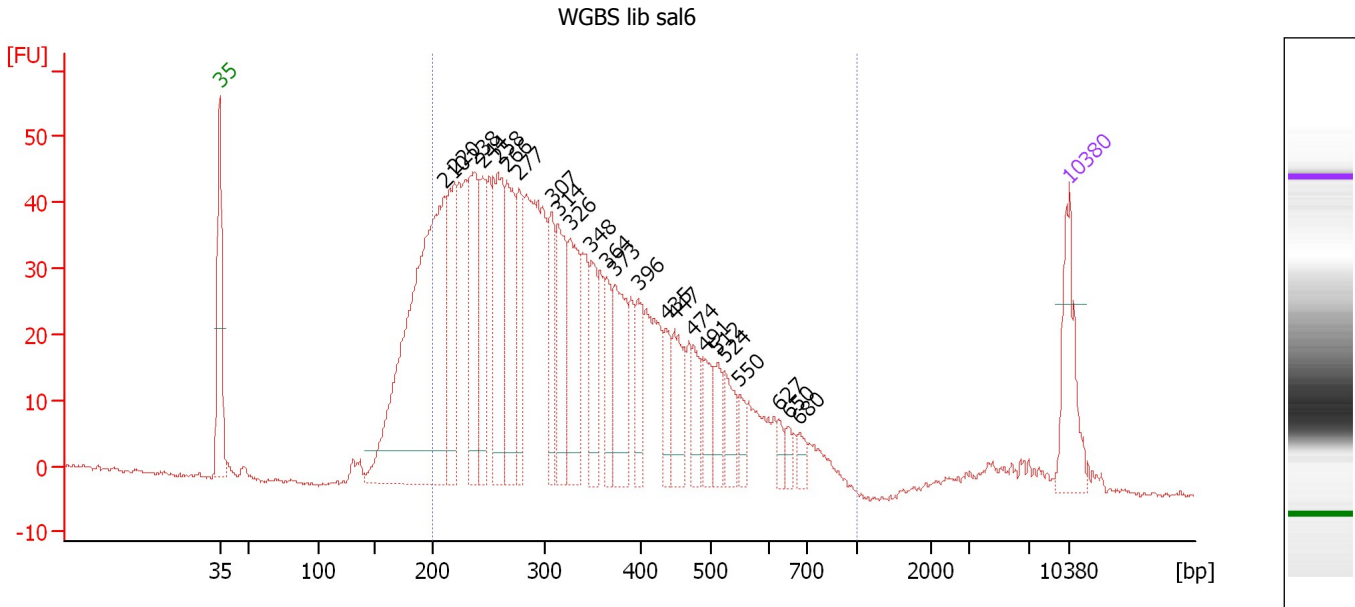
WGBS lib sal5

From [bp]	To [bp]	Average Size [bp]	Corr. Area	Molarity [pmol/l]	Co Conc. lor [pg/μl]	% of Total	Size distribution in CV [%]
200	1,000	325	1,605.9	20,309.5	 3,893.23	83	32.2

Assay Class: High Sensitivity DNA Assay  
 Data Path: C:\...ents and Settings\Bioanalyzer\2015-12-16\2015-12-16\_003.xad

Created: 12/16/2015 4:49:06 PM  
 Modified: 12/16/2015 5:32:39 PM

**Electropherogram Summary Continued ...**



**Overall Results for sample 5 : WGBS lib sal6**

Number of peaks found: 24                      Corr. Area 1: 1,288.4  
 Noise: 0.3

**Peak table for sample 5 : WGBS lib sal6**

Peak	Size [bp]	Conc. [pg/μl]	Molarity [pmol/l]	Observations	Aligned Migration Time [s]
1	35	125.00	5,411.3	Lower Marker	43.00
2	210	713.87	5,142.7		61.50
3	220	166.15	1,145.3		62.38
4	238	183.31	1,167.8		64.05
5	244	118.96	737.3		64.66
6	258	171.98	1,009.2		65.94
7	266	163.79	933.7		66.64
8	277	96.84	529.3		67.70
9	307	82.09	405.0		70.38
10	314	129.57	625.8		70.90
11	326	125.32	581.8		71.91
12	348	75.72	329.3		73.67
13	364	59.37	247.2		74.90
14	373	113.55	461.0		75.65
15	396	56.62	216.4		77.49
16	435	43.26	150.7		79.78
17	447	70.28	238.0		80.48
18	474	39.35	125.7		82.02
19	491	35.81	110.4		82.99
20	512	33.72	99.8		84.04
21	524	44.06	127.4		84.61
22	550	22.03	60.7		85.84
23	627	12.72	30.8		89.10
24	650	13.58	31.6		89.84
25	680	16.51	36.8		90.77

Assay Class: High Sensitivity DNA Assay  
 Data Path: C:\...ents and Settings\Bioanalyzer\2015-12-16\2015-12-16\_003.xad

Created: 12/16/2015 4:49:06 PM  
 Modified: 12/16/2015 5:32:39 PM

### Electropherogram Summary Continued ...

#### ... Peak table for sample 5 : WGBS lib sal6

Peak	Size [bp]	Conc. [pg/ $\mu$ l]	Molarity [pmol/l]	Observations	Aligned Migration Time [s]
26	10,380	75.00	10.9	Upper Marker	113.00

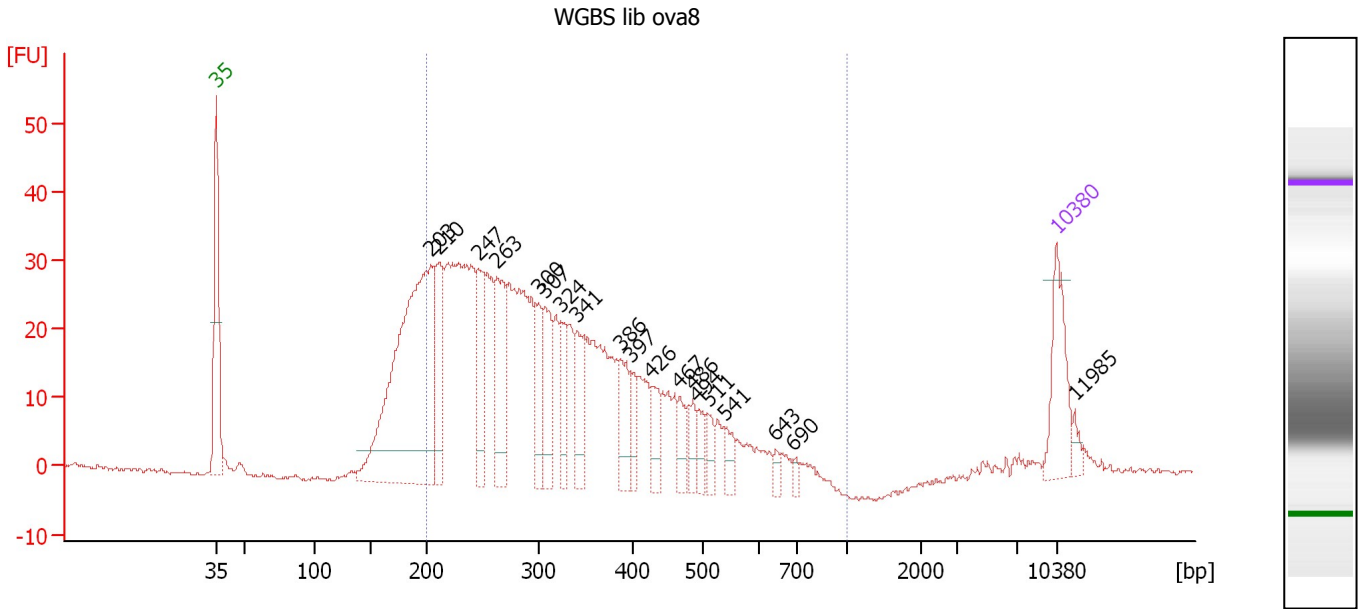
#### Region table for sample 5 : WGBS lib sal6

From [bp]	To [bp]	Average Size [bp]	Corr. Area	Molarity [pmol/l]	Co Conc. lor [pg/ $\mu$ l]	% of Total	Size distribution in CV [%]
200	1,000	346	1,288.4	15,657.3	3,113.77	86	35.2

Assay Class: High Sensitivity DNA Assay  
 Data Path: C:\...ents and Settings\Bioanalyzer\2015-12-16\2015-12-16\_003.xad

Created: 12/16/2015 4:49:06 PM  
 Modified: 12/16/2015 5:32:39 PM

**Electropherogram Summary Continued ...**



**Overall Results for sample 6 : WGBS lib ova8**

Number of peaks found: 19                      Corr. Area 1: 726.8  
 Noise: 0.3

**Peak table for sample 6 : WGBS lib ova8**

Peak	Size [bp]	Conc. [pg/μl]	Molarity [pmol/l]	Observations	Aligned Migration Time [s]
1	35	125.00	5,411.3	Lower Marker	43.00
2	203	644.23	4,796.8		60.87
3	210	134.46	969.2		61.49
4	247	91.35	561.1		64.87
5	263	128.77	742.0		66.38
6	300	68.02	343.0		69.84
7	307	94.55	467.3		70.33
8	324	58.33	272.9		71.71
9	341	64.30	286.1		73.04
10	386	59.27	232.8		76.64
11	397	34.83	133.0		77.53
12	426	41.50	147.6		79.27
13	467	31.32	101.5		81.62
14	486	24.35	75.9		82.69
15	494	25.92	79.5		83.13
16	511	25.37	75.3		83.98
17	541	24.47	68.5		85.44
18	643	10.47	24.6		89.62
19	690	8.73	19.2		91.09
20	10,380	75.00	10.9	Upper Marker	113.00
21	11,985	0.00	0.0		114.56

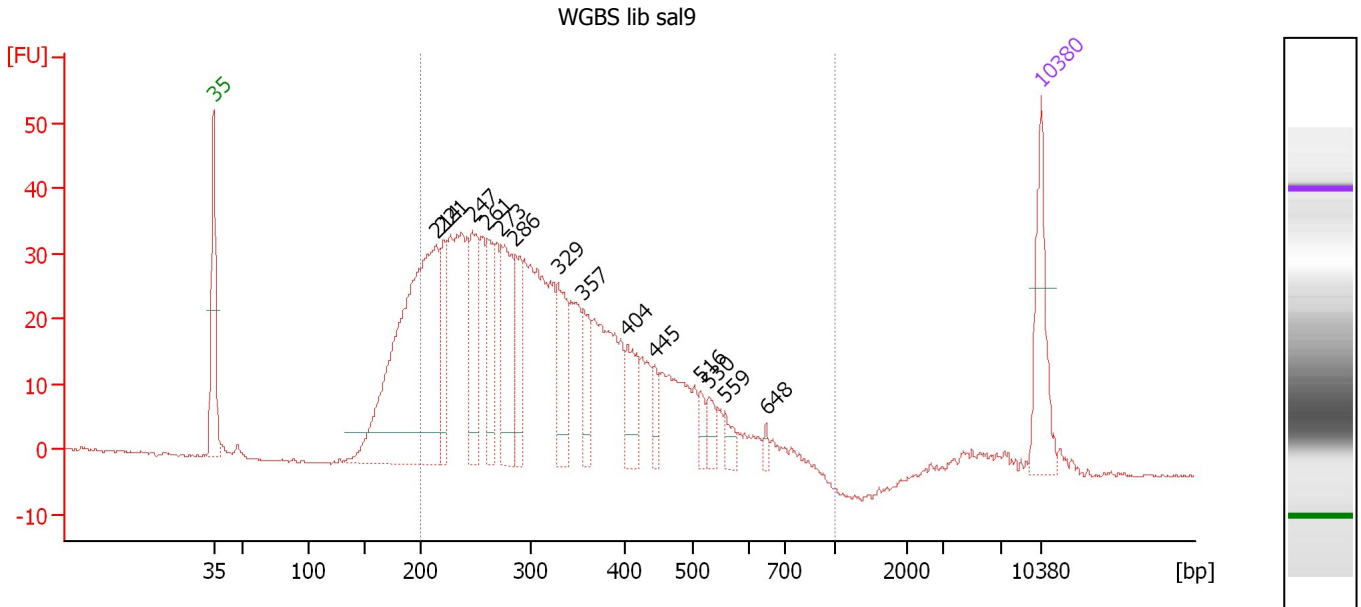
**Region table for sample 6 : WGBS lib ova8**

From [bp]	To [bp]	Average Size [bp]	Corr. Area	Molarity [pmol/l]	Co Conc. [pg/μl]	% of Total	Size distribution in CV [%]
200	1,000	321	726.8	11,403.0	2,175.24	83	30.3

Assay Class: High Sensitivity DNA Assay  
 Data Path: C:\...ents and Settings\Bioanalyzer\2015-12-16\2015-12-16\_003.xad

Created: 12/16/2015 4:49:06 PM  
 Modified: 12/16/2015 5:32:39 PM

**Electropherogram Summary Continued ...**



**Overall Results for sample 7 : WGBS lib sal9**

Number of peaks found: 14                      Corr. Area 1: 912.5  
 Noise: 0.2

**Peak table for sample 7 : WGBS lib sal9**

Peak	Size [bp]	Conc. [pg/μl]	Molarity [pmol/l]	Observations	Aligned Migration Time [s]
1	35	125.00	5,411.3	Lower Marker	43.00
2	214	592.46	4,199.0		61.82
3	221	84.23	578.5		62.45
4	247	107.09	657.2		64.89
5	261	82.72	481.1		66.15
6	273	137.55	762.9		67.33
7	286	77.47	409.9		68.54
8	329	93.00	427.8		72.16
9	357	57.86	245.9		74.32
10	404	61.57	230.8		78.02
11	445	23.72	80.8		80.32
12	516	18.97	55.7		84.25
13	530	21.68	61.9		84.93
14	559	17.84	48.4		86.28
15	648	7.15	16.7		89.76
16	10,380	75.00	10.9	Upper Marker	113.00

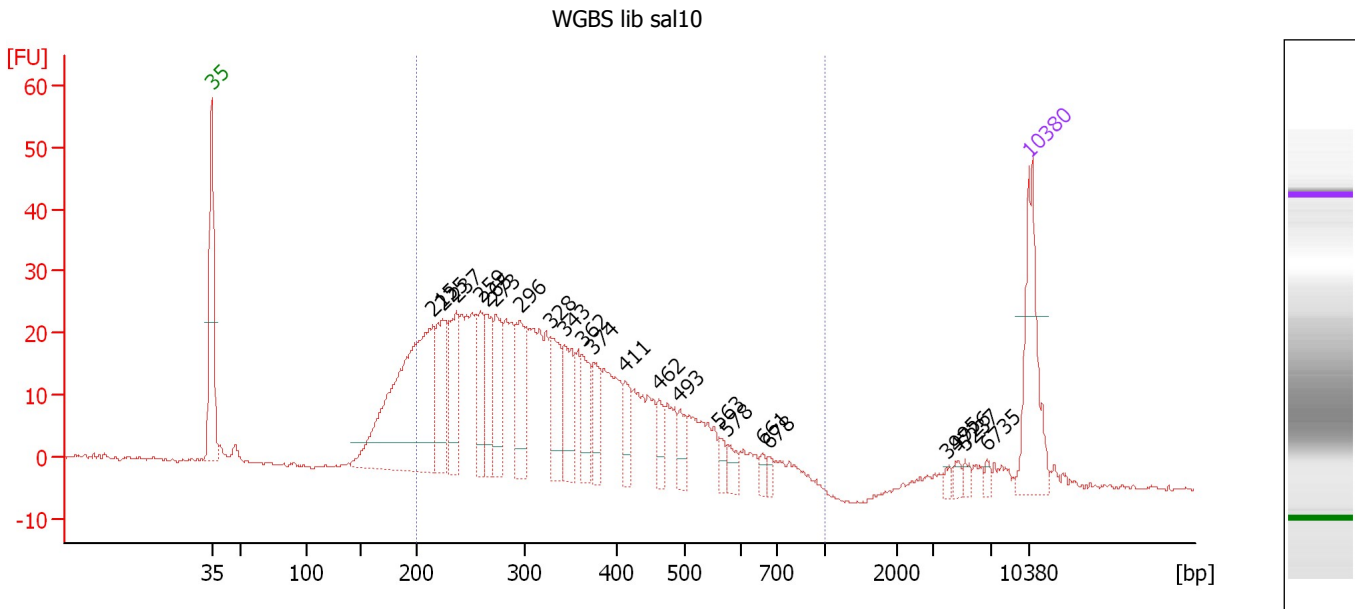
**Region table for sample 7 : WGBS lib sal9**

From [bp]	To [bp]	Average Size [bp]	Corr. Area	Molarity [pmol/l]	Co Conc. lor [pg/μl]	% of Total	Size distribution in CV [%]
200	1,000	333	912.5	10,946.0	2,137.93	85	32.5

Assay Class: High Sensitivity DNA Assay  
 Data Path: C:\...ents and Settings\Bioanalyzer\2015-12-16\2015-12-16\_003.xad

Created: 12/16/2015 4:49:06 PM  
 Modified: 12/16/2015 5:32:39 PM

**Electropherogram Summary Continued ...**



**Overall Results for sample 8 : WGBS lib sal10**

Number of peaks found: 22                      Corr. Area 1: 700.8  
 Noise: 0.3

**Peak table for sample 8 : WGBS lib sal10**

Peak	Size [bp]	Conc. [pg/μl]	Molarity [pmol/l]	Observations	Aligned Migration Time [s]
1	35	125.00	5,411.3	Lower Marker	43.00
2	215	340.44	2,397.1		61.95
3	225	95.48	644.3		62.82
4	237	76.49	489.3		63.96
5	259	51.32	300.7		65.97
6	265	49.88	285.2		66.56
7	273	63.15	350.7		67.29
8	296	68.61	351.2		69.44
9	328	62.94	290.8		72.04
10	343	63.26	279.5		73.23
11	362	42.07	176.2		74.74
12	374	32.78	132.9		75.69
13	411	26.29	97.0		78.39
14	462	20.00	65.6		81.31
15	493	19.85	61.0		83.09
16	563	10.77	29.0		86.47
17	578	13.98	36.6		87.20
18	661	7.75	17.8		90.17
19	678	7.02	15.7		90.72
20	3,995	4.71	1.8		105.97
21	4,726	5.75	1.8		106.88
22	5,237	5.45	1.6		107.52
23	6,735	4.41	1.0		109.39
24	10,380	75.00	10.9	Upper Marker	113.00



Assay Class: High Sensitivity DNA Assay  
Data Path: C:\...ents and Settings\Bioanalyzer\2015-12-16\2015-12-16\_003.xad

Created: 12/16/2015 4:49:06 PM  
Modified: 12/16/2015 5:32:39 PM

**Electropherogram Summary Continued ...**

... Region table for sample 8 :

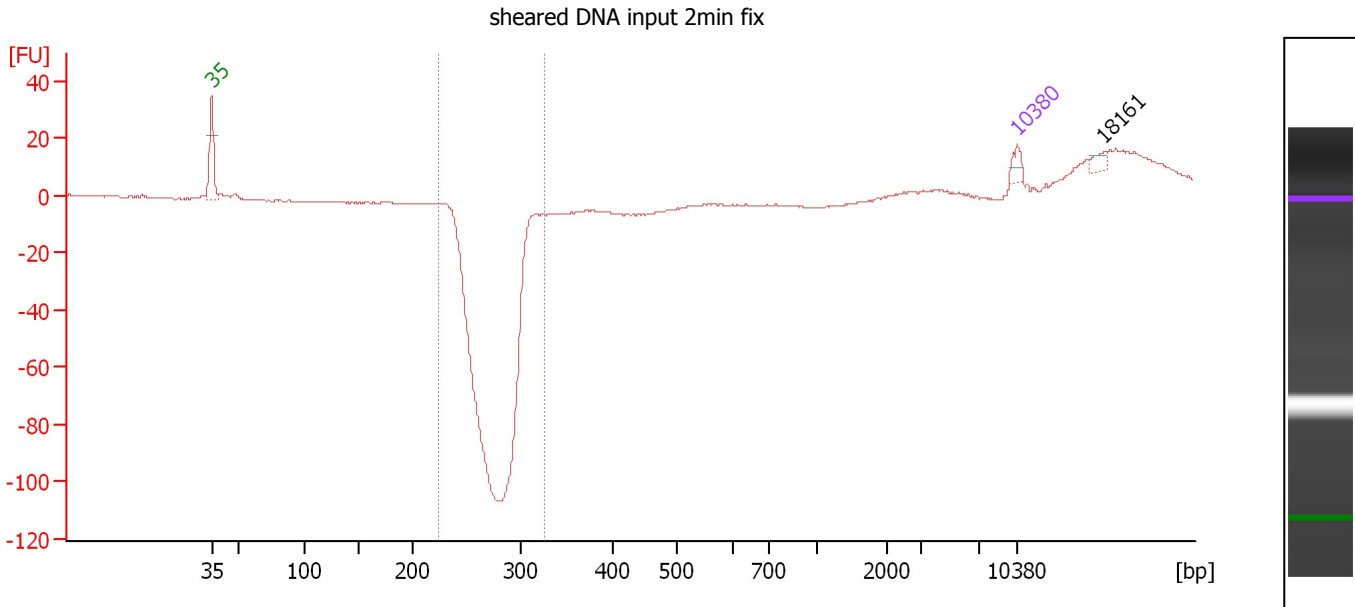
**WGBS lib sal10**

From [bp]	To [bp]	Average Size [bp]	Corr. Area	Molarity [pmol/l]	Co Conc. lor [pg/μl]	% of Total	Size distribution in CV [%]
200	1,000	341	700.8	7,063.8	■ 1,405.40	85	32.9

Assay Class: High Sensitivity DNA Assay  
 Data Path: C:\...ents and Settings\Bioanalyzer\2015-12-16\2015-12-16\_003.xad

Created: 12/16/2015 4:49:06 PM  
 Modified: 12/16/2015 5:32:39 PM

**Electropherogram Summary Continued ...**



**Overall Results for sample 9 : sheared DNA input 2min fix**

Number of peaks found: 1                      Corr. Area 1: 0.0  
 Noise: 0.2

**Peak table for sample 9 : sheared DNA input 2min fix**

Peak	Size [bp]	Conc. [pg/μl]	Molarity [pmol/l]	Observations	Aligned Migration Time [s]
1	35	125.00	5,411.3	Lower Marker	43.00
2	10,380	75.00	10.9	Upper Marker	113.00
3	18,161	0.00	0.0		120.54

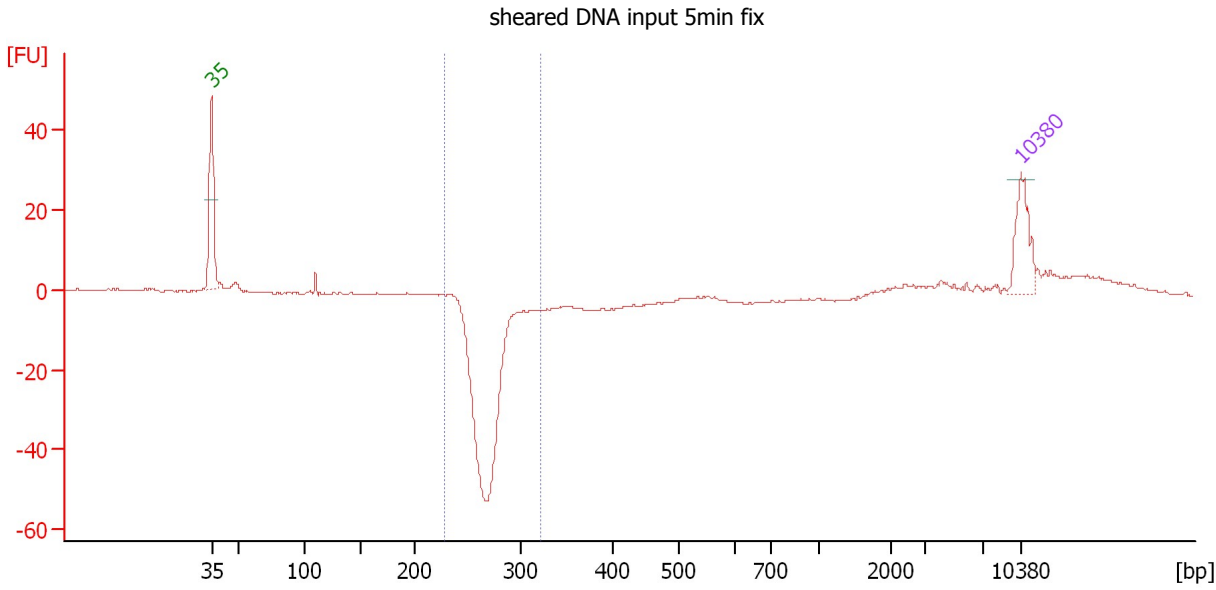
**Region table for sample 9 : sheared DNA input 2min fix**

From [bp]	To [bp]	Average Size [bp]	Corr. Area	Molarity [pmol/l]	Co Conc. lor [pg/μl]	% of Total	Size distribution in CV [%]
223	327	0	0.0	0.0	0.00	0	0.0

Assay Class: High Sensitivity DNA Assay  
 Data Path: C:\...ents and Settings\Bioanalyzer\2015-12-16\2015-12-16\_003.xad

Created: 12/16/2015 4:49:06 PM  
 Modified: 12/16/2015 5:32:39 PM

**Electropherogram Summary Continued ...**



**Overall Results for sample 10 : sheared DNA input 5min fix**

Number of peaks found: 0                      Corr. Area 1: 0.0  
 Noise: 0.2

**Peak table for sample 10 : sheared DNA input 5min fix**

Peak	Size [bp]	Conc. [pg/μl]	Molarity [pmol/l]	Observations	Aligned Migration Time [s]
1	35	125.00	5,411.3	Lower Marker	43.00
2	10,380	75.00	10.9	Upper Marker	113.00

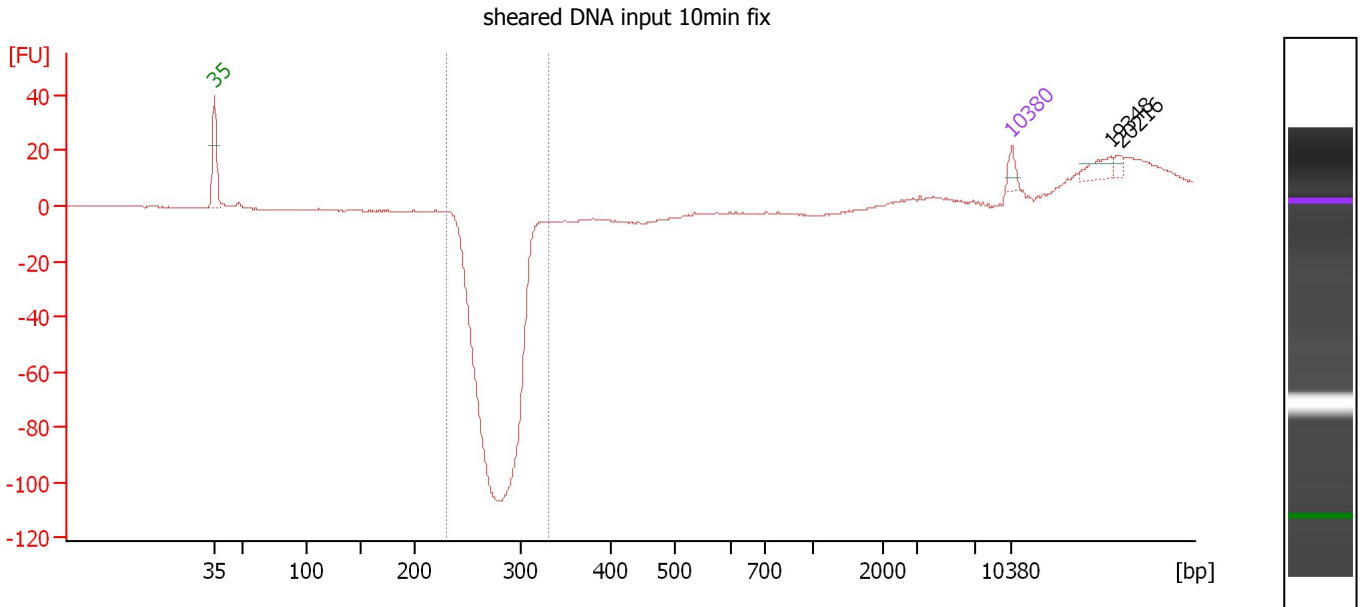
**Region table for sample 10 : sheared DNA input 5min fix**

From [bp]	To [bp]	Average Size [bp]	Corr. Area	Molarity [pmol/l]	Co Conc. lor [pg/μl]	% of Total	Size distribution in CV [%]
228	320	0	0.0	0.0	0.00	0	0.0

Assay Class: High Sensitivity DNA Assay  
 Data Path: C:\...ents and Settings\Bioanalyzer\2015-12-16\2015-12-16\_003.xad

Created: 12/16/2015 4:49:06 PM  
 Modified: 12/16/2015 5:32:39 PM

**Electropherogram Summary Continued ...**



**Overall Results for sample 11 : sheared DNA input 10min fix**

Number of peaks found: 2                      Corr. Area 1: 0.0  
 Noise: 0.2

**Peak table for sample 11 : sheared DNA input 10min fix**

Peak	Size [bp]	Conc. [pg/μl]	Molarity [pmol/l]	Observations	Aligned Migration Time [s]
1	35	125.00	5,411.3	Lower Marker	43.00
2	10,380	75.00	10.9	Upper Marker	113.00
3	19,348	0.00	0.0		121.69
4	20,216	0.00	0.0		122.53

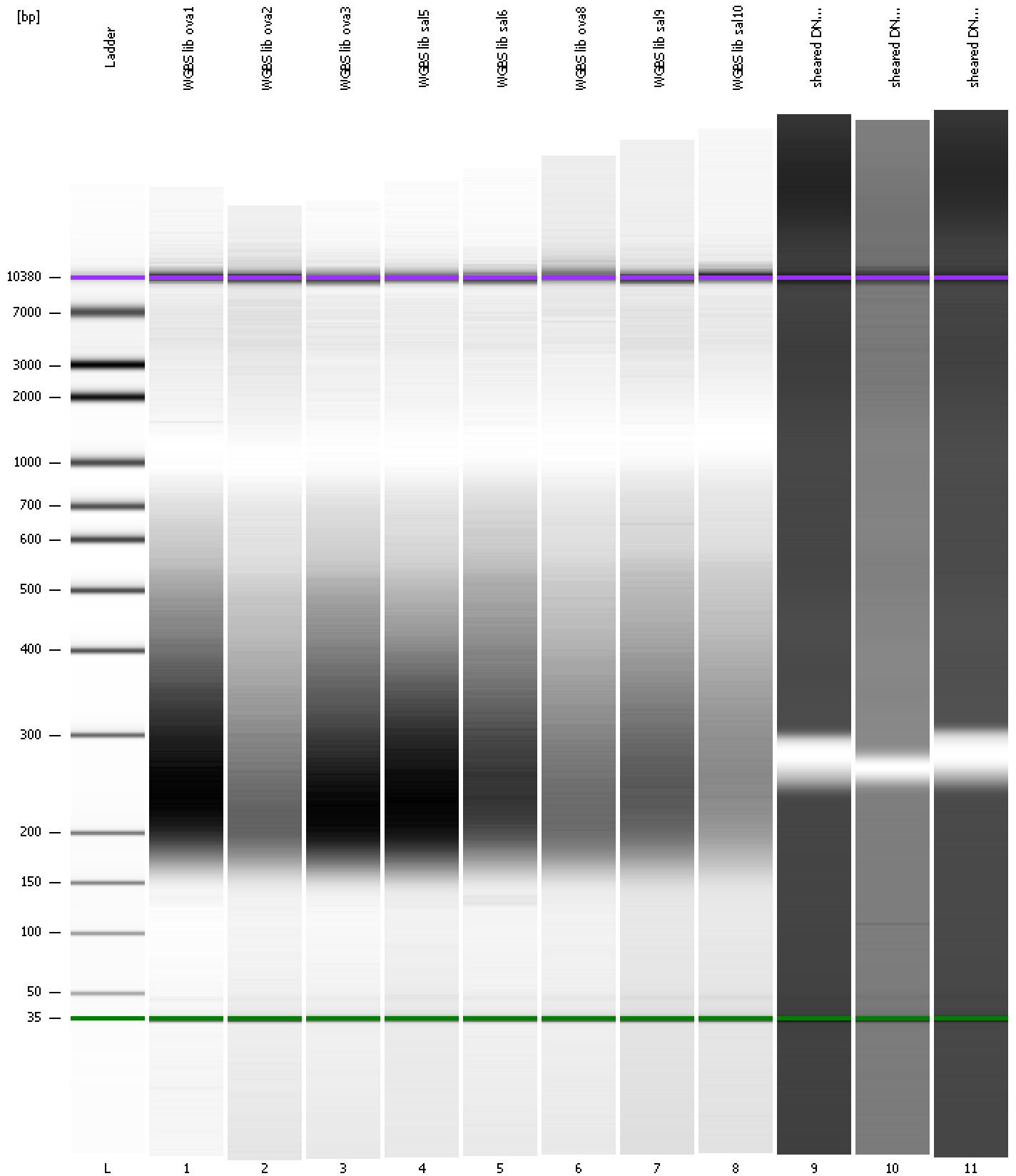
**Region table for sample 11 : sheared DNA input 10min fix**

From [bp]	To [bp]	Average Size [bp]	Corr. Area	Molarity [pmol/l]	Co Conc. lor [pg/μl]	% of Total	Size distribution in CV [%]
231	332	0	0.0	0.0	0.00	0	0.0

Assay Class: High Sensitivity DNA Assay  
Data Path: C:\...ents and Settings\Bioanalyzer\2015-12-16\2015-12-16\_003.xad

Created: 12/16/2015 4:49:06 PM  
Modified: 12/16/2015 5:32:39 PM

**Gel Image**



Assay Class: High Sensitivity DNA Assay  
 Data Path: C:\...ents and Settings\Bioanalyzer\2015-12-16\2015-12-16\_003.xad

Created: 12/16/2015 4:49:06 PM  
 Modified: 12/16/2015 5:32:39 PM

**Run Logbook**

Description	Number	Source	Category	Sub Category	Time	Time Zone	User	Host
Run ended on port 1 (Number of wells acquired: 12)		Instrument	Run		12/16/2015 5:30:25 PM	(GMT --08:00) Pacific Standard Time	UC Davis	D8XSMGH1
Run started on port 1 (File: C:\Documents and Settings\Bioanalyzer\2015-12-16\2015-12-16_003.xad)		Instrument	Run		12/16/2015 4:49:11 PM	(GMT --08:00) Pacific Standard Time	UC Davis	D8XSMGH1
Product Number : G2938B		Instrument	Run		12/16/2015 4:49:11 PM	(GMT --08:00) Pacific Standard Time	UC Davis	D8XSMGH1
Name :		Instrument	Run		12/16/2015 4:49:11 PM	(GMT --08:00) Pacific Standard Time	UC Davis	D8XSMGH1
Vendor : Agilent Technologies		Instrument	Run		12/16/2015 4:49:11 PM	(GMT --08:00) Pacific Standard Time	UC Davis	D8XSMGH1
Serial# : DE13701086		Instrument	Run		12/16/2015 4:49:11 PM	(GMT --08:00) Pacific Standard Time	UC Davis	D8XSMGH1
Firmware : C.01.069		Instrument	Run		12/16/2015 4:49:11 PM	(GMT --08:00) Pacific Standard Time	UC Davis	D8XSMGH1
Cartridge : Electrode		Instrument	Run		12/16/2015 4:49:11 PM	(GMT --08:00) Pacific Standard Time	UC Davis	D8XSMGH1