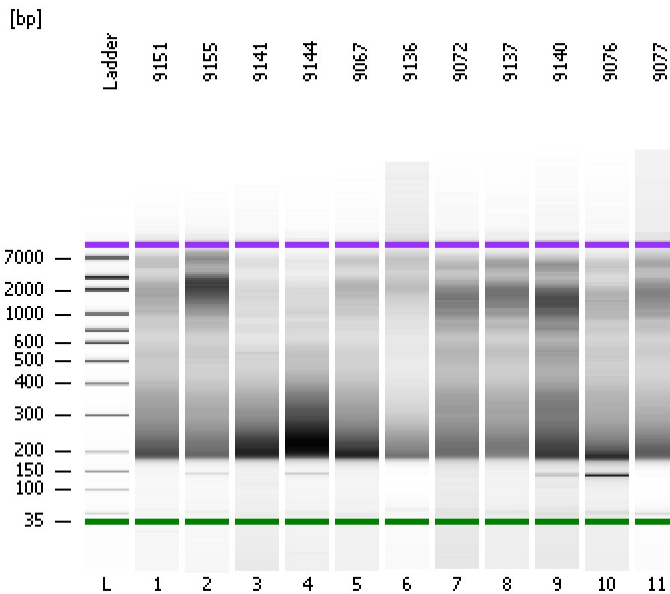


Assay Class: High Sensitivity DNA Assay
Data Path: C:\...ents and Settings\Bioanalyzer\2015-12-18\2015-12-18_002.xad

Created: 12/18/2015 2:14:45 PM
Modified: 12/18/2015 3:02:17 PM

Electrophoresis File Run Summary



Instrument Information:

Instrument Name: DE13701086 Firmware: C.01.069
Serial#: DE13701086 Type: G2938B

Assay Information:

Assay Origin Path: C:\Program Files\Agilent\2100 bioanalyzer\2100 expert\assays\dsDNA\High Sensitivity DNA.xsy
Assay Class: High Sensitivity DNA Assay
Version: 1.03
Assay Comments: Copyright © 2003-2010 Agilent Technologies

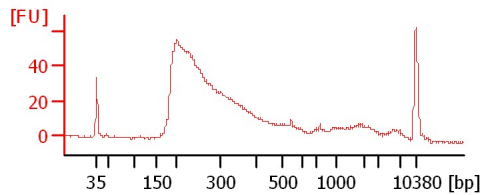
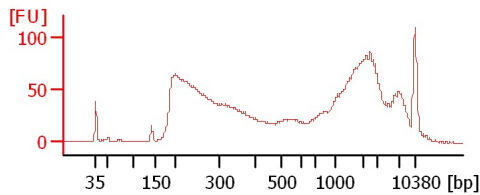
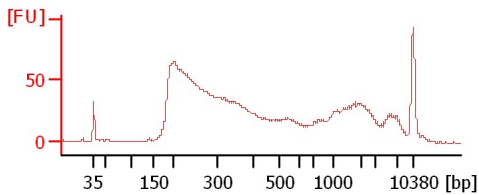
Chip Information:

Chip Lot #: Reagent Kit Lot #:
Chip Comments:

9151

9155

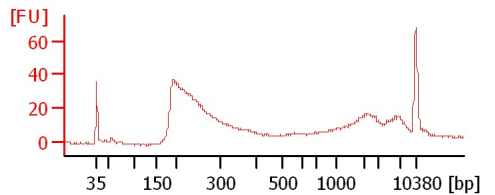
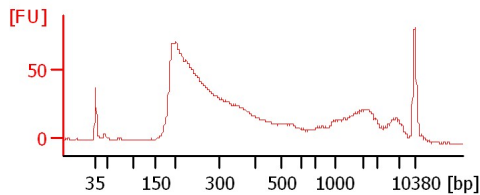
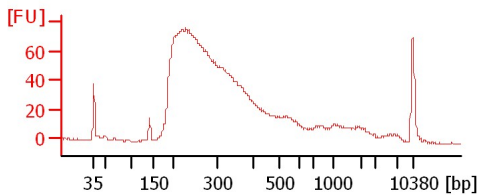
9141



9144

9067

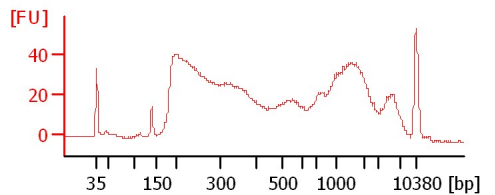
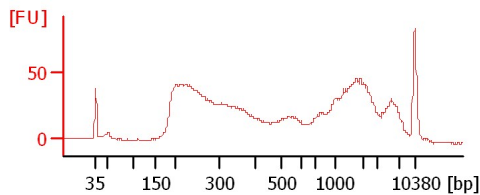
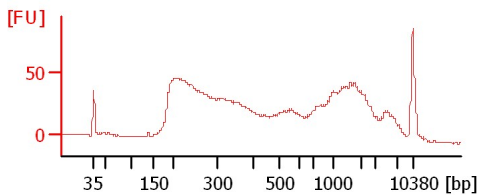
9136



9072

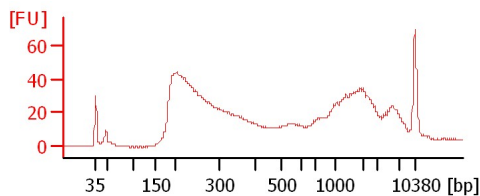
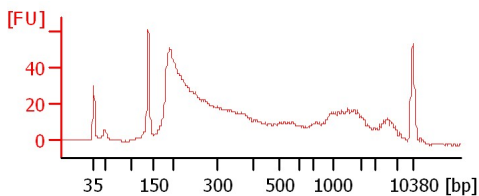
9137

9140



9076

9077



Assay Class: High Sensitivity DNA Assay
 Data Path: C:\...ents and Settings\Bioanalyzer\2015-12-18\2015-12-18_002.xad

Created: 12/18/2015 2:14:45 PM
 Modified: 12/18/2015 3:02:17 PM

Electrophoresis File Run Summary (Chip Summary)

Sample Name	Sample Comment	Rest. Digest	Status	Observation	Result Label	Result Color
9151		<input type="checkbox"/>	✓			
9155		<input type="checkbox"/>	✓			
9141		<input type="checkbox"/>	✓			
9144		<input type="checkbox"/>	✓			
9067		<input type="checkbox"/>	✓			
9136		<input type="checkbox"/>	✓			
9072		<input type="checkbox"/>	✓			
9137		<input type="checkbox"/>	✓			
9140		<input type="checkbox"/>	✓			
9076		<input type="checkbox"/>	✓			
9077		<input type="checkbox"/>	✓			
Ladder		<input type="checkbox"/>	✓			

Chip Lot #

Reagent Kit Lot #

Chip Comments :

Assay Class: High Sensitivity DNA Assay
Data Path: C:\...ents and Settings\Bioanalyzer\2015-12-18\2015-12-18_002.xad

Created: 12/18/2015 2:14:45 PM
Modified: 12/18/2015 3:02:17 PM

Electrophoresis Assay Details

General Analysis Settings

Number of Available Sample and Ladder Wells (Max.) : 12
Minimum Visible Range [s] : 32
Maximum Visible Range [s] : 138
Start Analysis Time Range [s] : 33
End Analysis Time Range [s] : 137.5
Ladder Concentration [pg/μl] : 1950
Uses Standard Area for Ladder Fragments
Lower Marker Concentration [pg/μl] : 125
Upper Marker Concentration [pg/μl] : 75
Used Upper Marker for Quantitation
Standard Curve Fit is Point to Point
Show Data Aligned to Lower and Upper Marker

Integrator Settings

Integration Start Time [s] : 33.05
Integration End Time [s] : 137
Slope Threshold : 0.8
Height Threshold [FU] : 5
Area Threshold : 0.1
Width Threshold [s] : 0.6
Baseline Plateau [s] : 0.5

Filter Settings

Filter Width [s] : 0.5
Polynomial Order : 4

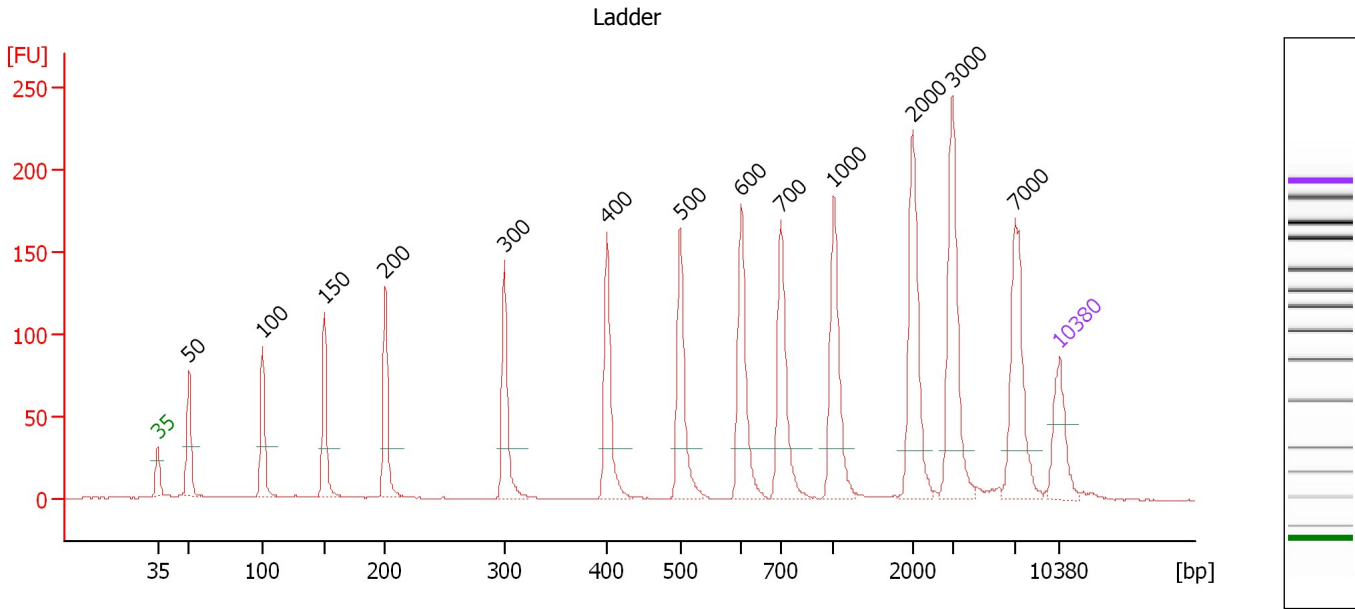
Ladder

Ladder Peak	Size	Area
1	35	160
2	50	210
3	100	208
4	150	221
5	200	242
6	300	270
7	400	305
8	500	306
9	600	336
10	700	321
11	1000	366
12	2000	413
13	3000	411
14	7000	400
15	10380	214

Assay Class: High Sensitivity DNA Assay
 Data Path: C:\...ents and Settings\Bioanalyzer\2015-12-18\2015-12-18_002.xad

Created: 12/18/2015 2:14:45 PM
 Modified: 12/18/2015 3:02:17 PM

Electropherogram Summary



Overall Results for Ladder

Noise: 0.2

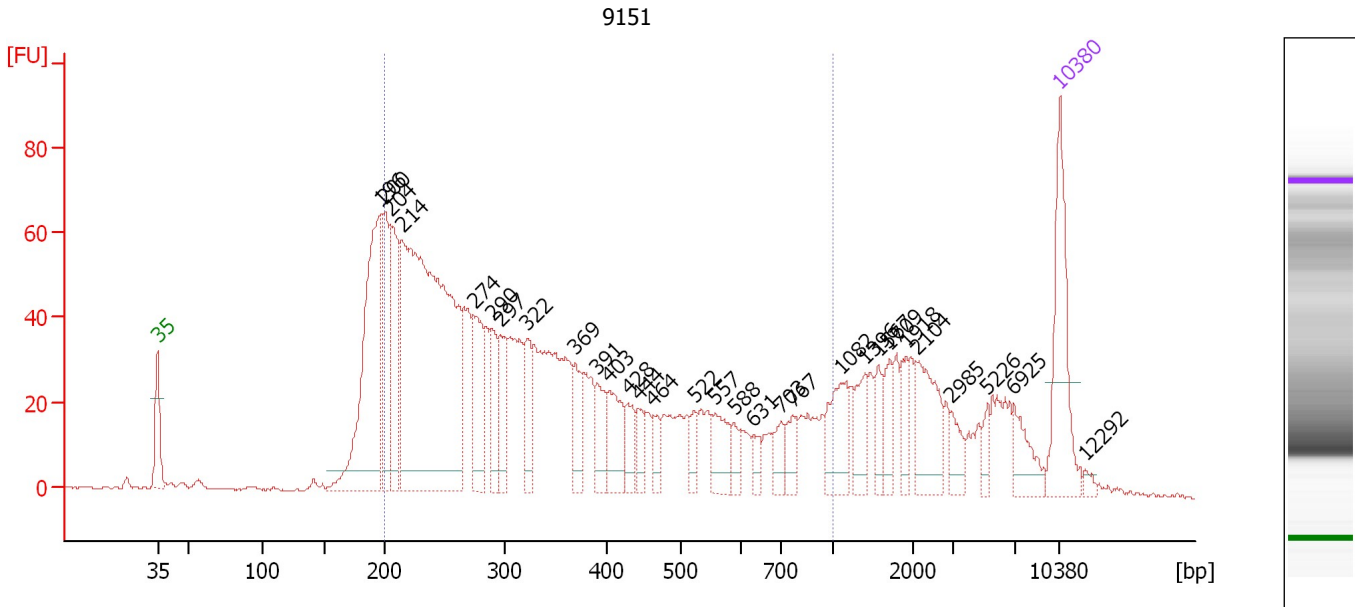
Peak table for Ladder

Peak	Size [bp]	Conc. [pg/μl]	Molarity [pmol/l]	Observations	Aligned Migration Time [s]
1	35	125.00	5,411.3	Lower Marker	43.00
2	50	150.00	4,545.5	Ladder Peak	45.43
3	100	150.00	2,272.7	Ladder Peak	51.15
4	150	150.00	1,515.2	Ladder Peak	55.96
5	200	150.00	1,136.4	Ladder Peak	60.67
6	300	150.00	757.6	Ladder Peak	69.92
7	400	150.00	568.2	Ladder Peak	77.89
8	500	150.00	454.5	Ladder Peak	83.56
9	600	150.00	378.8	Ladder Peak	88.28
10	700	150.00	324.7	Ladder Peak	91.35
11	1,000	150.00	227.3	Ladder Peak	95.47
12	2,000	150.00	113.6	Ladder Peak	101.60
13	3,000	150.00	75.8	Ladder Peak	104.67
14	7,000	150.00	32.5	Ladder Peak	109.52
15	10,380	75.00	10.9	Upper Marker	113.00

Assay Class: High Sensitivity DNA Assay
 Data Path: C:\...ents and Settings\Bioanalyzer\2015-12-18\2015-12-18_002.xad

Created: 12/18/2015 2:14:45 PM
 Modified: 12/18/2015 3:02:17 PM

Electropherogram Summary Continued ...



Overall Results for sample 1 : 9151

Number of peaks found: 30 Corr. Area 1: 1,433.2
 Noise: 0.3

Peak table for sample 1 : 9151

Peak	Size [bp]	Conc. [pg/μl]	Molarity [pmol/l]	Observations	Aligned Migration Time [s]
1	35	125.00	5,411.3	Lower Marker	43.00
2	196	257.70	1,990.9		60.31
3	200	95.69	726.7		60.63
4	204	110.12	816.0		61.08
5	214	597.27	4,231.5		61.95
6	274	72.29	399.4		67.54
7	290	44.54	233.0		68.96
8	297	45.77	233.5		69.64
9	322	41.71	196.4		71.66
10	369	37.29	153.1		75.41
11	391	33.67	130.5		77.15
12	403	45.83	172.2		78.07
13	428	25.21	89.2		79.49
14	444	19.96	68.2		80.36
15	464	15.67	51.2		81.50
16	522	15.44	44.8		84.62
17	557	33.82	92.0		86.26
18	588	12.73	32.8		87.73
19	631	10.63	25.5		89.24
20	703	17.23	37.1		91.39
21	767	20.13	39.8		92.26
22	1,082	48.41	67.8		95.97
23	1,396	27.19	29.5		97.89
24	1,567	17.43	16.8		98.95
25	1,709	21.39	19.0		99.81

Assay Class: High Sensitivity DNA Assay
 Data Path: C:\...ents and Settings\Bioanalyzer\2015-12-18\2015-12-18_002.xad


Created: 12/18/2015 2:14:45 PM
 Modified: 12/18/2015 3:02:17 PM

Electropherogram Summary Continued ...

... Peak table for sample 1 : 9151

Peak	Size [bp]	Conc. [pg/ μ l]	Molarity [pmol/l]	Observations	Aligned Migration Time [s]
26	1,918	16.61	13.1		101.10
27	2,104	50.41	36.3		101.92
28	2,985	16.54	8.4		104.62
29	5,226	9.60	2.8		107.37
30	6,925	26.03	5.7		109.43
31	10,380	75.00	10.9	Upper Marker	113.00
32	12,292	0.00	0.0		114.97

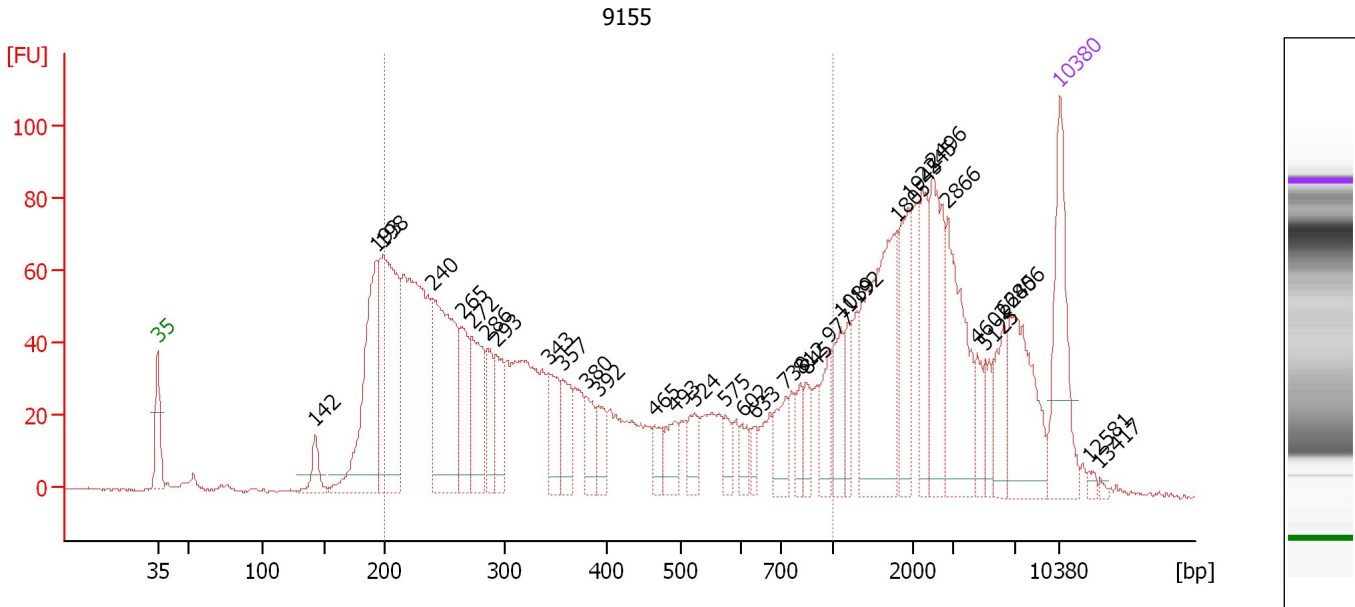
Region table for sample 1 : 9151

From [bp]	To [bp]	Average Size [bp]	Corr. Area	Molarity [pmol/l]	Co Conc. lor [pg/ μ l]	% of Total	Size distribution in CV [%]
200	1,000	380	1,433.2	9,194.3	 1,841.32	70	47.4

Assay Class: High Sensitivity DNA Assay
 Data Path: C:\...ents and Settings\Bioanalyzer\2015-12-18\2015-12-18_002.xad

Created: 12/18/2015 2:14:45 PM
 Modified: 12/18/2015 3:02:17 PM

Electropherogram Summary Continued ...



Overall Results for sample 2 : 9155

Number of peaks found: 35 Corr. Area 1: 1,513.5
 Noise: 0.4

Peak table for sample 2 : 9155

Peak	Size [bp]	Conc. [pg/μl]	Molarity [pmol/l]	Observations	Aligned Migration Time [s]
1	35	125.00	5,411.3	Lower Marker	43.00
2	142	24.77	263.4		55.23
3	193	177.62	1,396.0		59.99
4	198	207.17	1,584.8		60.49
5	240	188.02	1,188.6		64.34
6	265	62.14	355.8		66.65
7	272	81.45	452.9		67.38
8	286	42.98	227.9		68.60
9	293	45.77	236.6		69.28
10	343	43.48	192.0		73.36
11	357	35.85	152.2		74.44
12	380	27.08	108.1		76.26
13	392	25.93	100.2		77.25
14	465	18.89	61.5		81.60
15	493	26.12	80.3		83.14
16	524	20.81	60.2		84.68
17	575	16.66	43.9		87.08
18	602	14.42	36.3		88.35
19	633	11.00	26.3		89.30
20	730	28.98	60.2		91.75
21	812	16.32	30.5		92.88
22	845	17.69	31.7		93.34
23	977	26.06	40.4		95.15
24	1,089	32.77	45.6		96.01
25	1,192	22.59	28.7		96.64

Assay Class: High Sensitivity DNA Assay
 Data Path: C:\...ents and Settings\Bioanalyzer\2015-12-18\2015-12-18_002.xad

Created: 12/18/2015 2:14:45 PM
 Modified: 12/18/2015 3:02:17 PM

Electropherogram Summary Continued ...

... Peak table for sample 2 : 9155

Peak	Size [bp]	Conc. [pg/μl]	Molarity [pmol/l]	Observations	Aligned Migration Time [s]
26	1,805	139.03	116.7		100.40
27	1,945	54.14	42.2		101.27
28	2,245	44.41	30.0		102.35
29	2,496	72.05	43.7		103.12
30	2,866	86.73	45.9		104.26
31	4,602	20.64	6.8		106.61
32	5,125	14.60	4.3		107.25
33	6,245	32.38	7.9		108.61
34	6,806	79.01	17.6		109.28
35	10,380	75.00	10.9	Upper Marker	113.00
36	12,581	0.00	0.0		115.27
37	13,417	0.00	0.0		116.13

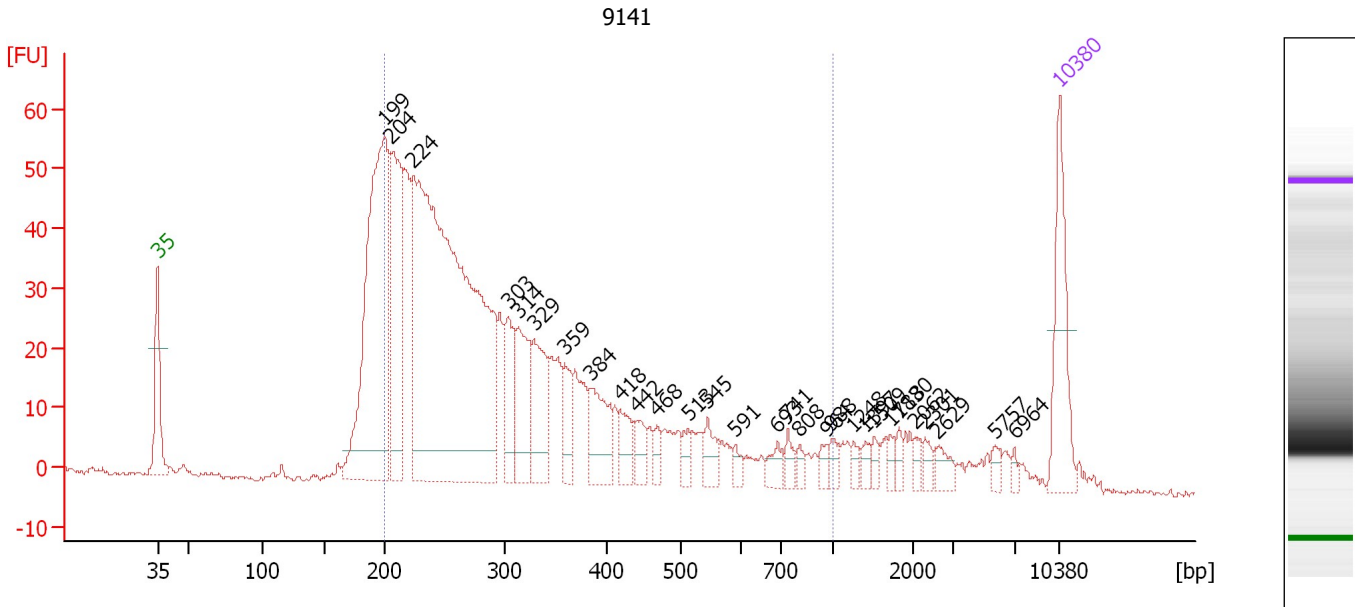
Region table for sample 2 : 9155

From [bp]	To [bp]	Average Size [bp]	Corr. Area	Molarity [pmol/l]	Co Conc. lor [pg/μl]	% of Total	Size distribution in CV [%]
200	1,000	406	1,513.5	7,604.3	1,559.29	57	50.4

Assay Class: High Sensitivity DNA Assay
 Data Path: C:\...ents and Settings\Bioanalyzer\2015-12-18\2015-12-18_002.xad

Created: 12/18/2015 2:14:45 PM
 Modified: 12/18/2015 3:02:17 PM

Electropherogram Summary Continued ...



Overall Results for sample 3 : 9141

Number of peaks found: 29 Corr. Area 1: 981.9
 Noise: 0.5

Peak table for sample 3 : 9141

Peak	Size [bp]	Conc. [pg/μl]	Molarity [pmol/l]	Observations	Aligned Migration Time [s]
1	35	125.00	5,411.3	Lower Marker	43.00
2	199	443.33	3,368.8		60.61
3	204	216.18	1,603.0		61.07
4	224	929.34	6,296.7		62.86
5	303	65.43	326.9		70.18
6	314	85.76	414.4		71.00
7	329	81.13	373.5		72.24
8	359	34.58	146.0		74.61
9	384	65.35	258.1		76.58
10	418	31.14	112.8		78.92
11	442	22.03	75.6		80.24
12	468	12.73	41.2		81.75
13	513	14.34	42.3		84.18
14	545	22.07	61.4		85.69
15	591	9.33	23.9		87.84
16	693	15.04	32.9		91.13
17	741	11.94	24.4		91.91
18	808	7.96	14.9		92.82
19	964	8.81	13.9		94.97
20	988	10.42	16.0		95.29
21	1,248	6.76	8.2		96.99
22	1,397	7.74	8.4		97.90
23	1,509	8.04	8.1		98.59
24	1,718	7.37	6.5		99.87
25	1,830	7.78	6.4		100.56

Assay Class: High Sensitivity DNA Assay
 Data Path: C:\...ents and Settings\Bioanalyzer\2015-12-18\2015-12-18_002.xad

Created: 12/18/2015 2:14:45 PM
 Modified: 12/18/2015 3:02:17 PM

Electropherogram Summary Continued ...

... Peak table for sample 3 : 9141

Peak	Size [bp]	Conc. [pg/μl]	Molarity [pmol/l]	Observations	Aligned Migration Time [s]
26	2,062	6.91	5.1		101.79
27	2,301	8.27	5.4		102.52
28	2,629	13.25	7.6		103.53
29	5,757	8.37	2.2		108.01
30	6,964	4.60	1.0		109.48
31	10,380	75.00	10.9	Upper Marker	113.00

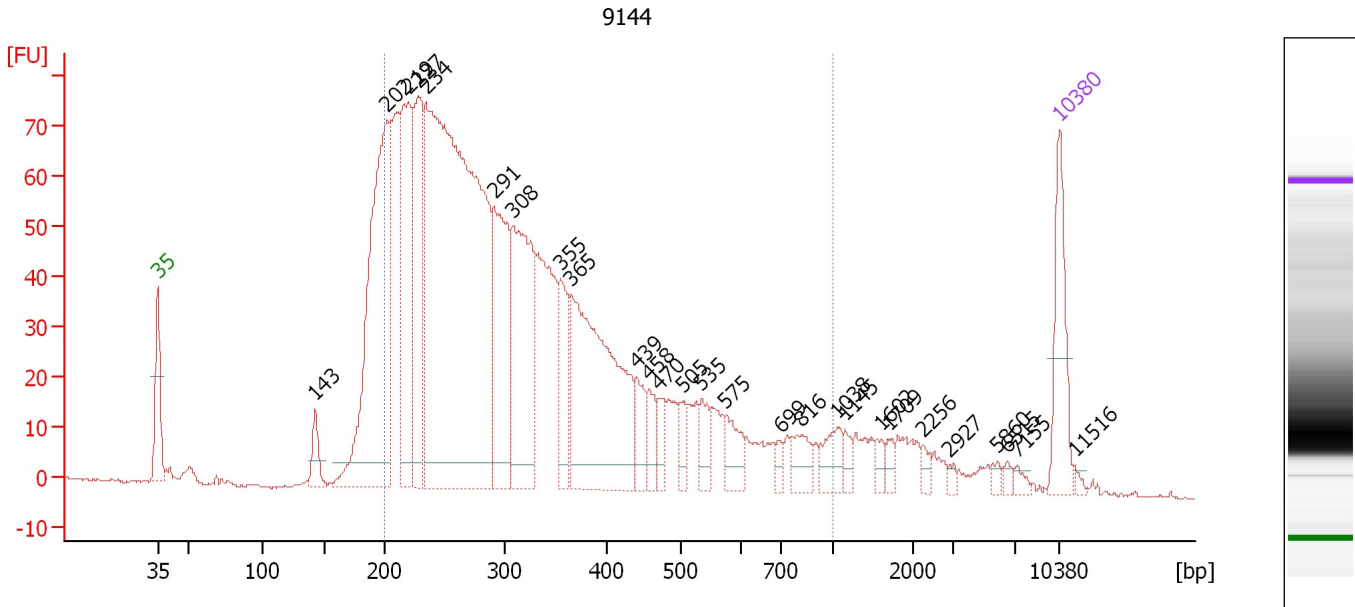
Region table for sample 3 : 9141

From [bp]	To [bp]	Average Size [bp]	Corr. Area	Molarity [pmol/l]	Co Conc. lor [pg/μl]	% of Total	Size distribution in CV [%]
200	1,000	334	981.9	10,854.3	2,019.67	78	44.4

Assay Class: High Sensitivity DNA Assay
 Data Path: C:\...ents and Settings\Bioanalyzer\2015-12-18\2015-12-18_002.xad

Created: 12/18/2015 2:14:45 PM
 Modified: 12/18/2015 3:02:17 PM

Electropherogram Summary Continued ...



Overall Results for sample 4 : 9144

Number of peaks found: 27 Corr. Area 1: 1,755.9
 Noise: 0.4

Peak table for sample 4 : 9144

Peak	Size [bp]	Conc. [pg/μl]	Molarity [pmol/l]	Observations	Aligned Migration Time [s]
1	35	125.00	5,411.3	Lower Marker	43.00
2	143	38.43	408.1		55.25
3	202	501.99	3,773.6		60.82
4	219	260.96	1,803.3		62.45
5	227	209.33	1,395.1		63.20
6	234	1,177.67	7,611.7		63.86
7	291	220.49	1,147.8		69.09
8	308	269.02	1,321.7		70.59
9	355	80.77	344.9		74.28
10	365	365.38	1,517.8		75.08
11	439	41.21	142.1		80.13
12	458	33.15	109.8		81.16
13	470	23.94	77.2		81.86
14	505	23.96	72.0		83.77
15	535	30.73	87.0		85.22
16	575	38.91	102.5		87.09
17	699	11.07	24.0		91.30
18	816	32.02	59.4		92.94
19	1,038	32.31	47.2		95.70
20	1,145	12.20	16.2		96.35
21	1,602	10.81	10.2		99.16
22	1,709	9.89	8.8		99.81
23	2,256	9.34	6.3		102.39
24	2,927	5.05	2.6		104.44
25	5,860	5.94	1.5		108.14

Assay Class: High Sensitivity DNA Assay
 Data Path: C:\...ents and Settings\Bioanalyzer\2015-12-18\2015-12-18_002.xad

Created: 12/18/2015 2:14:45 PM
 Modified: 12/18/2015 3:02:17 PM

Electropherogram Summary Continued ...

... Peak table for sample 4 : 9144

Peak	Size [bp]	Conc. [pg/ μ l]	Molarity [pmol/l]	Observations	Aligned Migration Time [s]
26	6,515	5.11	1.2		108.93
27	7,155	6.61	1.4		109.68
28	10,380	75.00	10.9	Upper Marker	113.00
29	11,516	0.00	0.0		114.17

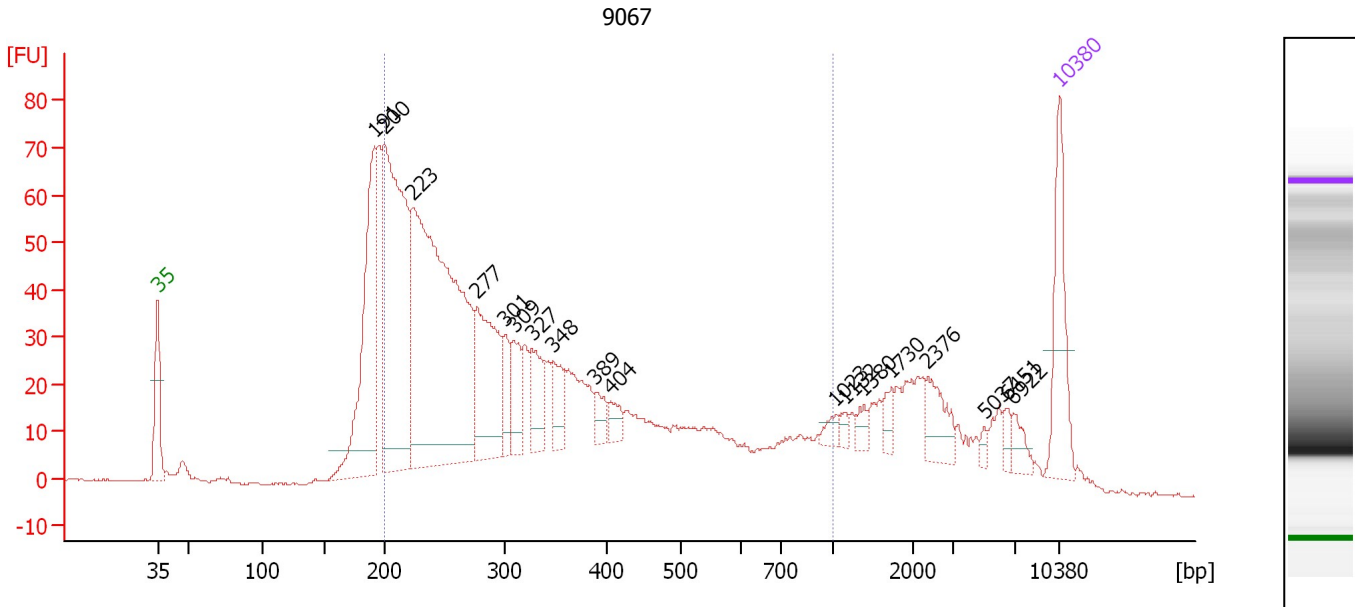
Region table for sample 4 : 9144

From [bp]	To [bp]	Average Size [bp]	Corr. Area	Molarity [pmol/l]	Co Conc. lor [pg/ μ l]	% of Total	Size distribution in CV [%]
200	1,000	341	1,755.9	17,849.3	3,424.19	84	41.9

Assay Class: High Sensitivity DNA Assay
 Data Path: C:\...ents and Settings\Bioanalyzer\2015-12-18\2015-12-18_002.xad

Created: 12/18/2015 2:14:45 PM
 Modified: 12/18/2015 3:02:17 PM

Electropherogram Summary Continued ...



Overall Results for sample 5 : 9067

Number of peaks found: 18 Corr. Area 1: 1,234.2
 Noise: 0.3

Peak table for sample 5 : 9067

Peak	Size [bp]	Conc. [pg/μl]	Molarity [pmol/l]	Observations	Aligned Migration Time [s]
1	35	125.00	5,411.3	Lower Marker	43.00
2	191	281.04	2,229.7		59.82
3	200	447.74	3,399.3		60.63
4	223	666.01	4,530.3		62.78
5	277	167.24	915.3		67.78
6	301	39.57	199.4		69.97
7	309	47.62	233.5		70.64
8	327	56.48	261.7		72.07
9	348	40.48	176.3		73.74
10	389	20.52	80.0		76.98
11	404	18.17	68.1		78.12
12	1,023	10.02	14.8		95.61
13	1,132	6.51	8.7		96.27
14	1,380	10.47	11.5		97.80
15	1,730	13.48	11.8		99.94
16	2,376	36.11	23.0		102.75
17	5,037	5.71	1.7		107.14
18	6,451	10.08	2.4		108.85
19	6,922	15.69	3.4		109.43
20	10,380	75.00	10.9	Upper Marker	113.00

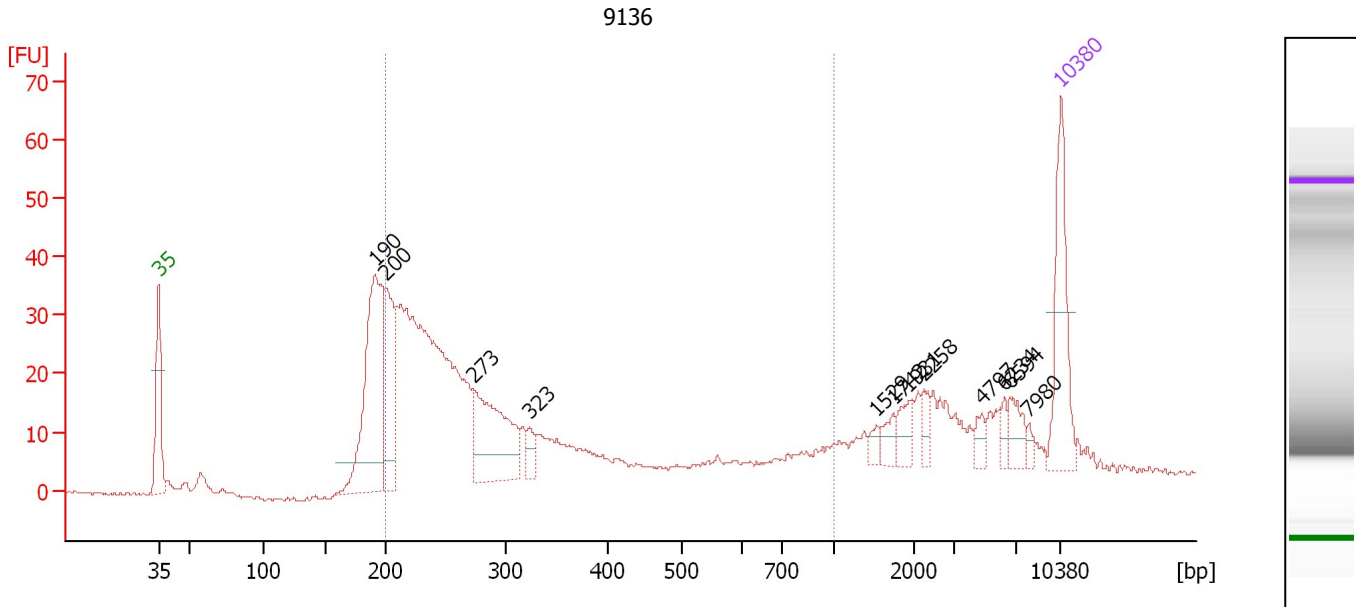
Region table for sample 5 : 9067

From [bp]	To [bp]	Average Size [bp]	Corr. Area	Molarity [pmol/l]	Co Conc. [pg/μl]	% of Total	Size distribution in CV [%]
200	1,000	355	1,234.2	11,315.9	2,167.16	70	47.3

Assay Class: High Sensitivity DNA Assay
 Data Path: C:\...ents and Settings\Bioanalyzer\2015-12-18\2015-12-18_002.xad

Created: 12/18/2015 2:14:45 PM
 Modified: 12/18/2015 3:02:17 PM

Electropherogram Summary Continued ...



Overall Results for sample 6 : 9136

Number of peaks found: 12 Corr. Area 1: 484.8
 Noise: 0.2

Peak table for sample 6 : 9136

Peak	Size [bp]	Conc. [pg/μl]	Molarity [pmol/l]	Observations	Aligned Migration Time [s]
1	35	125.00	5,411.3	Lower Marker	43.00
2	190	252.87	2,012.8		59.76
3	200	114.49	866.9		60.68
4	273	143.94	797.6		67.46
5	323	18.64	87.4		71.78
6	1,529	7.48	7.4		98.71
7	1,742	12.64	11.0		100.02
8	1,931	17.58	13.8		101.18
9	2,258	11.84	7.9		102.39
10	4,797	10.09	3.2		106.85
11	6,234	9.15	2.2		108.59
12	6,594	20.13	4.6		109.03
13	7,980	5.40	1.0		110.53
14	10,380	75.00	10.9	Upper Marker	113.00

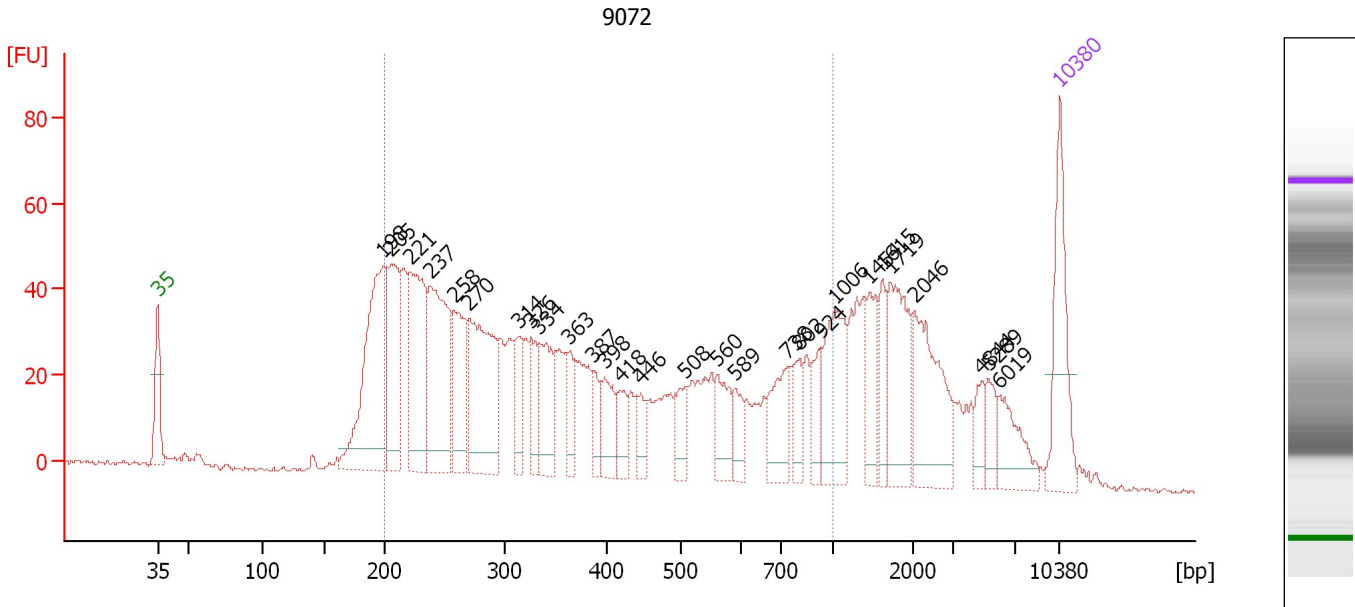
Region table for sample 6 : 9136

From [bp]	To [bp]	Average Size [bp]	Corr. Area	Molarity [pmol/l]	Co Conc. lor [pg/μl]	% of Total	Size distribution in CV [%]
200	1,000	340	484.8	5,763.0	1,051.03	61	51.4

Assay Class: High Sensitivity DNA Assay
 Data Path: C:\...ents and Settings\Bioanalyzer\2015-12-18\2015-12-18_002.xad

Created: 12/18/2015 2:14:45 PM
 Modified: 12/18/2015 3:02:17 PM

Electropherogram Summary Continued ...



Overall Results for sample 7 : 9072

Number of peaks found: 28 Corr. Area 1: 1,325.7
 Noise: 0.5

Peak table for sample 7 : 9072

Peak	Size [bp]	Conc. [pg/μl]	Molarity [pmol/l]	Observations	Aligned Migration Time [s]
1	35	125.00	5,411.3	Lower Marker	43.00
2	198	256.48	1,960.9		60.50
3	205	125.21	925.1		61.14
4	221	170.61	1,169.7		62.61
5	237	187.54	1,196.5		64.14
6	258	97.40	571.5		66.05
7	270	175.37	982.5		67.19
8	314	41.60	200.5		71.07
9	326	39.48	183.4		72.00
10	334	71.70	325.1		72.64
11	363	35.36	147.5		74.95
12	387	26.00	101.9		76.82
13	398	41.27	157.2		77.71
14	418	29.30	106.1		78.93
15	446	21.17	71.9		80.51
16	508	33.29	99.3		83.95
17	560	44.37	120.0		86.41
18	589	24.71	63.5		87.78
19	738	54.39	111.7		91.86
20	802	28.38	53.6		92.75
21	924	29.73	48.8		94.42
22	1,006	84.37	127.1		95.50
23	1,454	45.29	47.2		98.25
24	1,615	30.00	28.2		99.24
25	1,719	82.62	72.8		99.88

Assay Class: High Sensitivity DNA Assay
Data Path: C:\...ents and Settings\Bioanalyzer\2015-12-18\2015-12-18_002.xad

Created: 12/18/2015 2:14:45 PM
Modified: 12/18/2015 3:02:17 PM

Electropherogram Summary Continued ...

... Peak table for sample 7 : 9072

Peak	Size [bp]	Conc. [pg/μl]	Molarity [pmol/l]	Observations	Aligned Migration Time [s]
26	2,046	95.27	70.5		101.74
27	4,844	19.03	6.0		106.90
28	5,289	20.73	5.9		107.45
29	6,019	41.38	10.4		108.33
30	10,380	75.00	10.9	Upper Marker	113.00

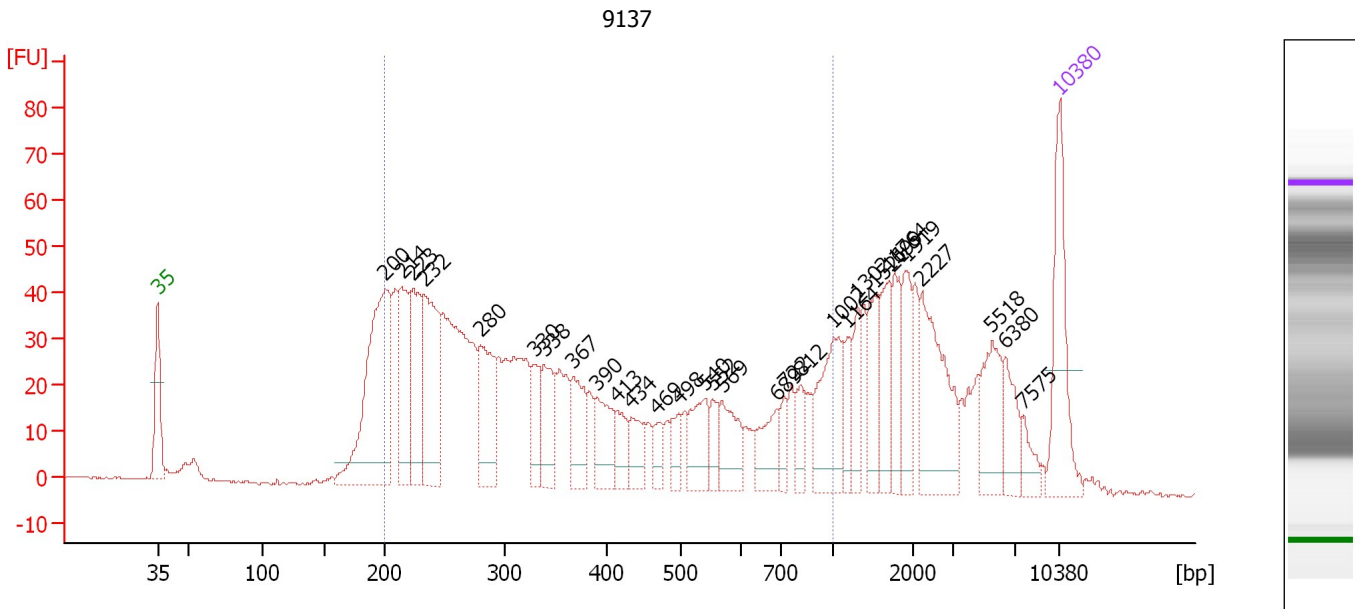
Region table for sample 7 : 9072

From [bp]	To [bp]	Average Size [bp]	Corr. Area	Molarity [pmol/l]	Co Conc. lor [pg/μl]	% of Total	Size distribution in CV [%]
200	1,000	423	1,325.7	8,803.2	1,870.37	68	49.0

Assay Class: High Sensitivity DNA Assay
 Data Path: C:\...ents and Settings\Bioanalyzer\2015-12-18\2015-12-18_002.xad

Created: 12/18/2015 2:14:45 PM
 Modified: 12/18/2015 3:02:17 PM

Electropherogram Summary Continued ...



Overall Results for sample 8 : 9137

Number of peaks found: 30 Corr. Area 1: 1,127.4
 Noise: 0.3

Peak table for sample 8 : 9137

Peak	Size [bp]	Conc. [pg/μl]	Molarity [pmol/l]	Observations	Aligned Migration Time [s]
1	35	125.00	5,411.3	Lower Marker	43.00
2	200	248.72	1,884.0		60.67
3	214	99.87	707.0		61.97
4	223	101.94	692.1		62.82
5	232	138.96	906.3		63.66
6	280	91.46	495.4		68.04
7	330	34.00	156.3		72.27
8	338	57.35	256.8		72.97
9	367	52.97	218.7		75.26
10	390	47.28	183.6		77.10
11	413	25.53	93.6		78.65
12	434	29.38	102.7		79.79
13	469	17.24	55.7		81.78
14	498	21.16	64.4		83.43
15	540	45.93	128.8		85.47
16	552	20.82	57.1		86.02
17	569	42.65	113.6		86.81
18	689	40.35	88.8		90.99
19	722	17.19	36.1		91.64
20	812	22.85	42.6		92.89
21	1,002	78.23	118.3		95.48
22	1,164	24.14	31.4		96.47
23	1,302	28.44	33.1		97.32
24	1,521	36.96	36.8		98.66
25	1,699	44.98	40.1		99.76

Assay Class: High Sensitivity DNA Assay
 Data Path: C:\...ents and Settings\Bioanalyzer\2015-12-18\2015-12-18_002.xad

Created: 12/18/2015 2:14:45 PM
 Modified: 12/18/2015 3:02:17 PM

Electropherogram Summary Continued ...

... Peak table for sample 8 : 9137

Peak	Size [bp]	Conc. [pg/μl]	Molarity [pmol/l]	Observations	Aligned Migration Time [s]
26	1,764	36.99	31.8		100.16
27	1,919	36.47	28.8		101.10
28	2,227	90.90	61.9		102.30
29	5,518	51.19	14.1		107.72
30	6,380	30.96	7.4		108.77
31	7,575	15.29	3.1		110.11
32	10,380	75.00	10.9	Upper Marker	113.00

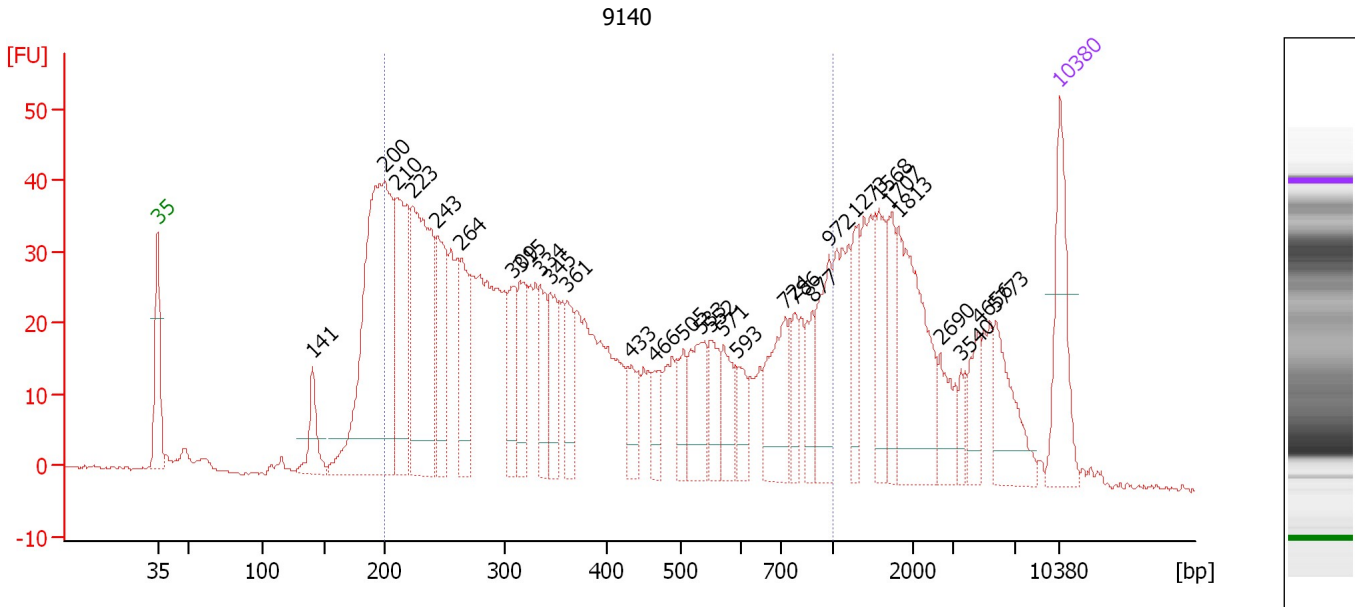
Region table for sample 8 : 9137

From [bp]	To [bp]	Average Size [bp]	Corr. Area	Molarity [pmol/l]	Co Conc. lor [pg/μl]	% of Total	Size distribution in CV [%]
200	1,000	412	1,127.4	7,799.7	1,625.80	63	49.6

Assay Class: High Sensitivity DNA Assay
 Data Path: C:\...ents and Settings\Bioanalyzer\2015-12-18\2015-12-18_002.xad

Created: 12/18/2015 2:14:45 PM
 Modified: 12/18/2015 3:02:17 PM

Electropherogram Summary Continued ...



Overall Results for sample 9 : 9140

Number of peaks found: 30 Corr. Area 1: 1,100.1
 Noise: 0.3

Peak table for sample 9 : 9140

Peak	Size [bp]	Conc. [pg/μl]	Molarity [pmol/l]	Observations	Aligned Migration Time [s]
1	35	125.00	5,411.3	Lower Marker	43.00
2	141	53.40	575.9		55.04
3	200	457.48	3,467.3		60.66
4	210	181.62	1,309.1		61.62
5	223	278.25	1,893.1		62.77
6	243	111.79	697.7		64.63
7	264	90.14	517.4		66.58
8	309	55.69	273.5		70.60
9	315	73.33	352.9		71.10
10	334	55.58	251.9		72.66
11	345	60.06	263.7		73.51
12	361	51.78	217.0		74.81
13	433	37.69	132.0		79.73
14	466	28.46	92.5		81.64
15	505	33.66	101.0		83.80
16	533	65.21	185.5		85.10
17	552	40.89	112.3		86.00
18	571	43.53	115.5		86.91
19	593	29.81	76.1		87.96
20	724	82.10	171.8		91.67
21	786	30.34	58.5		92.53
22	877	35.12	60.6		93.78
23	972	67.48	105.1		95.09
24	1,273	44.82	53.3		97.14
25	1,568	54.41	52.6		98.95

Assay Class: High Sensitivity DNA Assay
 Data Path: C:\...ents and Settings\Bioanalyzer\2015-12-18\2015-12-18_002.xad

Created: 12/18/2015 2:14:45 PM
 Modified: 12/18/2015 3:02:17 PM

Electropherogram Summary Continued ...

... Peak table for sample 9 : 9140

Peak	Size [bp]	Conc. [pg/μl]	Molarity [pmol/l]	Observations	Aligned Migration Time [s]
26	1,707	37.55	33.3		99.80
27	1,813	134.32	112.2		100.46
28	2,690	33.61	18.9		103.72
29	3,540	14.19	6.1		105.32
30	4,656	29.77	9.7		106.68
31	5,773	60.24	15.8		108.03
32	10,380	75.00	10.9	Upper Marker	113.00

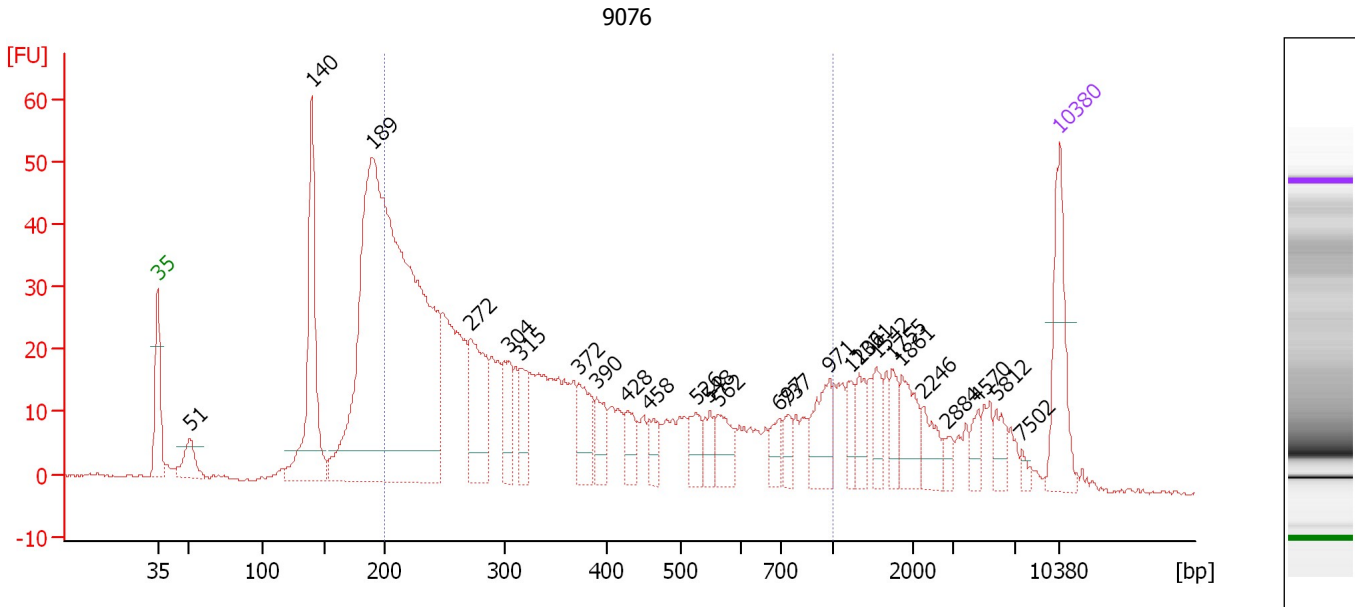
Region table for sample 9 : 9140

From [bp]	To [bp]	Average Size [bp]	Corr. Area	Molarity [pmol/l]	Co Conc. lor [pg/μl]	% of Total	Size distribution in CV [%]
200	1,000	425	1,100.1	11,432.9	2,442.43	66	48.8

Assay Class: High Sensitivity DNA Assay
 Data Path: C:\...ents and Settings\Bioanalyzer\2015-12-18\2015-12-18_002.xad

Created: 12/18/2015 2:14:45 PM
 Modified: 12/18/2015 3:02:17 PM

Electropherogram Summary Continued ...



Overall Results for sample 10 : 9076

Number of peaks found: 26 Corr. Area 1: 793.7
 Noise: 0.2

Peak table for sample 10 : 9076

Peak	Size [bp]	Conc. [pg/μl]	Molarity [pmol/l]	Observations	Aligned Migration Time [s]
1	35	125.00	5,411.3	Lower Marker	43.00
2	51	44.15	1,307.2		45.56
3	140	239.13	2,596.4		54.95
4	189	1,160.22	9,281.7		59.67
5	272	121.11	675.3		67.30
6	304	58.26	290.0		70.27
7	315	41.88	201.4		71.12
8	372	54.09	220.4		75.64
9	390	34.45	133.8		77.10
10	428	28.32	100.3		79.46
11	458	22.69	75.1		81.16
12	526	29.96	86.3		84.78
13	548	23.53	65.0		85.83
14	562	40.08	108.1		86.49
15	697	21.49	46.7		91.26
16	737	17.07	35.1		91.86
17	971	50.76	79.2		95.07
18	1,206	19.54	24.5		96.73
19	1,321	27.18	31.2		97.43
20	1,542	26.18	25.7		98.79
21	1,755	20.58	17.8		100.09
22	1,861	41.28	33.6		100.75
23	2,246	28.78	19.4		102.35
24	2,884	9.33	4.9		104.31
25	4,570	14.59	4.8		106.57

Assay Class: High Sensitivity DNA Assay
 Data Path: C:\...ents and Settings\Bioanalyzer\2015-12-18\2015-12-18_002.xad

Created: 12/18/2015 2:14:45 PM
 Modified: 12/18/2015 3:02:17 PM

Electropherogram Summary Continued ...

... Peak table for sample 10 : 9076

Peak	Size [bp]	Conc. [pg/ μ l]	Molarity [pmol/l]	Observations	Aligned Migration Time [s]
26	5,812	19.53	5.1		108.08
27	7,502	5.91	1.2		110.04
28	10,380	75.00	10.9	Upper Marker	113.00

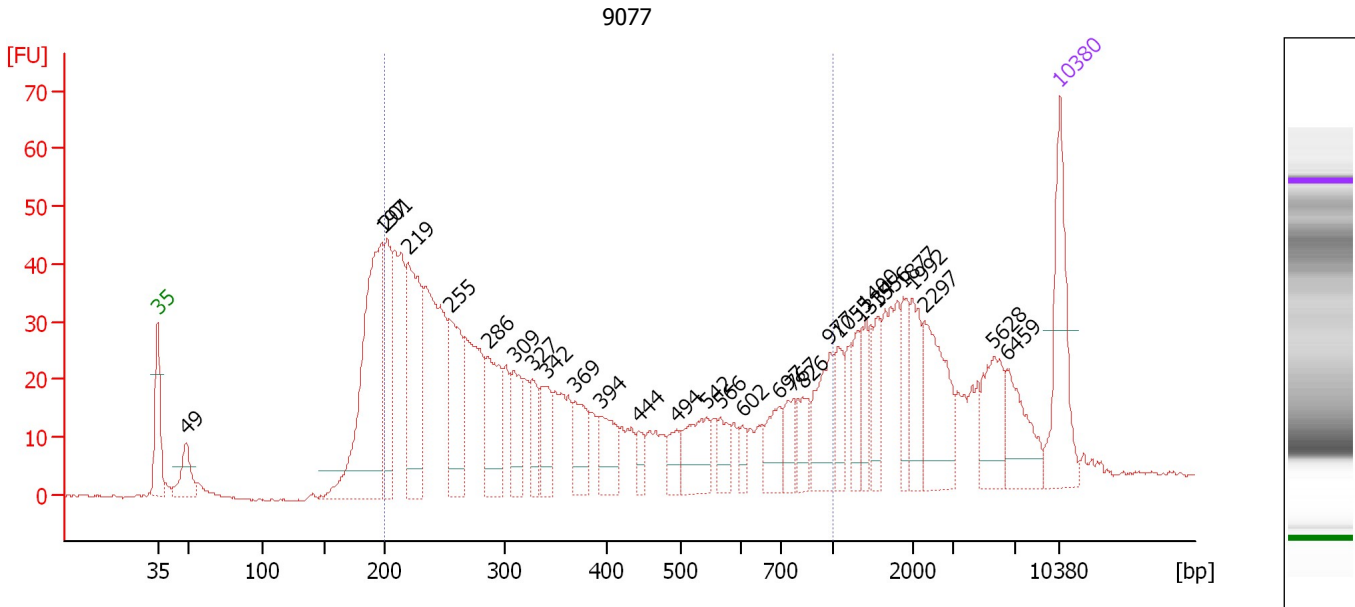
Region table for sample 10 : 9076

From [bp]	To [bp]	Average Size [bp]	Corr. Area	Molarity [pmol/l]	Co Conc. lor [pg/ μ l]	% of Total	Size distribution in CV [%]
200	1,000	392	793.7	9,189.3	1,848.25	61	49.6

Assay Class: High Sensitivity DNA Assay
 Data Path: C:\...ents and Settings\Bioanalyzer\2015-12-18\2015-12-18_002.xad

Created: 12/18/2015 2:14:45 PM
 Modified: 12/18/2015 3:02:17 PM

Electropherogram Summary Continued ...



Overall Results for sample 11 : 9077

Number of peaks found: 29 Corr. Area 1: 858.7
 Noise: 0.3

Peak table for sample 11 : 9077

Peak	Size [bp]	Conc. [pg/μl]	Molarity [pmol/l]	Observations	Aligned Migration Time [s]
1	35	125.00	5,411.3	Lower Marker	43.00
2	49	43.90	1,365.3		45.22
3	197	283.89	2,182.2		60.40
4	201	97.12	730.6		60.80
5	219	163.75	1,133.6		62.42
6	255	95.97	570.5		65.74
7	286	83.15	440.6		68.62
8	309	54.88	269.1		70.64
9	327	31.90	147.9		72.05
10	342	42.99	190.5		73.26
11	369	42.35	174.1		75.38
12	394	41.53	159.8		77.39
13	444	14.33	48.9		80.37
14	494	20.11	61.6		83.24
15	542	50.26	140.4		85.56
16	566	20.91	56.0		86.67
17	602	12.45	31.3		88.34
18	697	33.62	73.0		91.26
19	767	24.64	48.6		92.27
20	826	23.14	42.4		93.08
21	977	52.71	81.8		95.15
22	1,055	27.93	40.1		95.80
23	1,334	29.31	33.3		97.52
24	1,400	24.97	27.0		97.92
25	1,556	30.50	29.7		98.88

Assay Class: High Sensitivity DNA Assay
 Data Path: C:\...ents and Settings\Bioanalyzer\2015-12-18\2015-12-18_002.xad

Created: 12/18/2015 2:14:45 PM
 Modified: 12/18/2015 3:02:17 PM

Electropherogram Summary Continued ...

... Peak table for sample 11 : 9077

Peak	Size [bp]	Conc. [pg/μl]	Molarity [pmol/l]	Observations	Aligned Migration Time [s]
26	1,877	28.31	22.9		100.85
27	1,992	37.71	28.7		101.55
28	2,297	71.98	47.5		102.51
29	5,628	47.70	12.8		107.86
30	6,459	45.46	10.7		108.86
31	10,380	75.00	10.9	Upper Marker	113.00

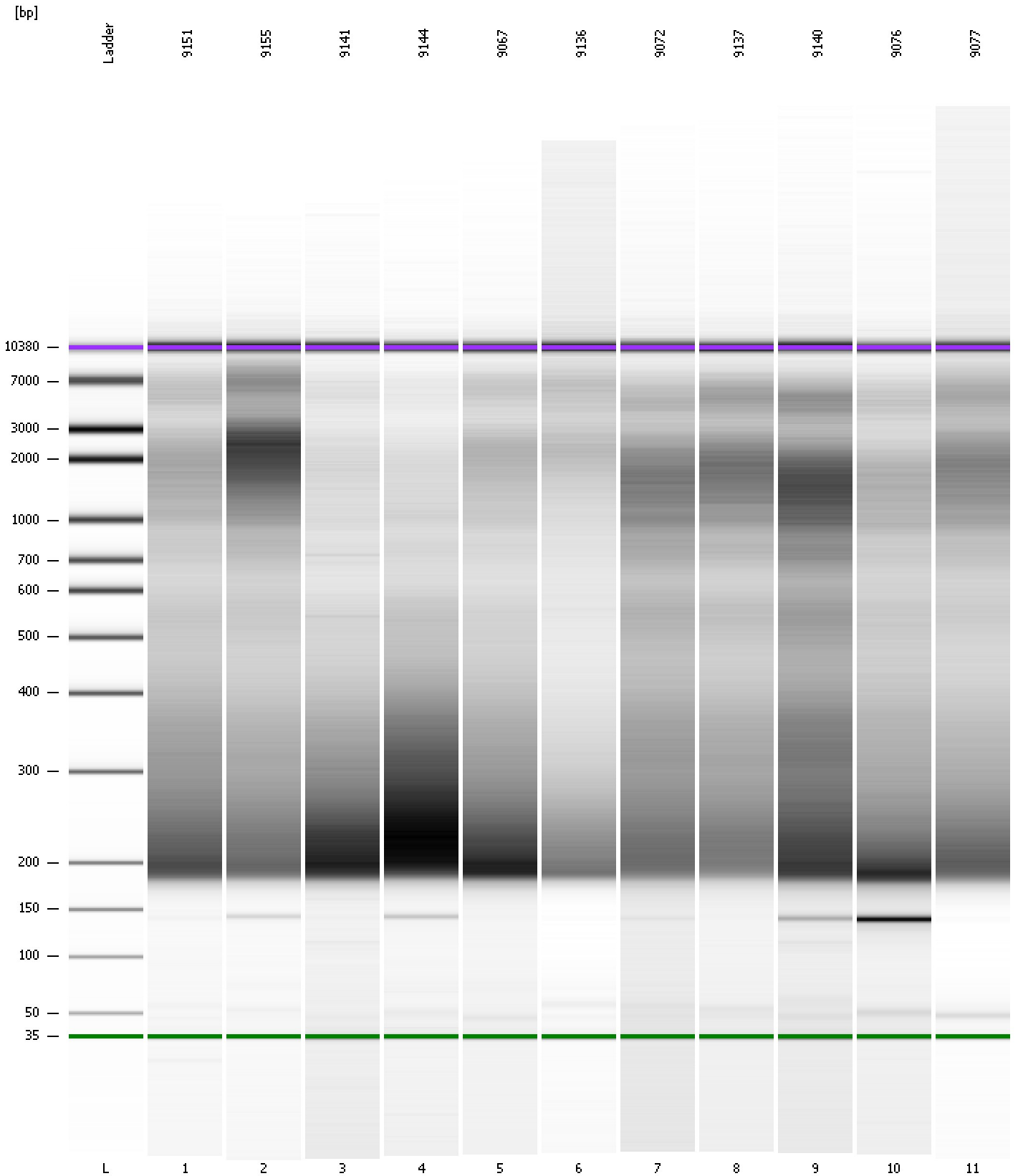
Region table for sample 11 : 9077

From [bp]	To [bp]	Average Size [bp]	Corr. Area	Molarity [pmol/l]	Co Conc. lor [pg/μl]	% of Total	Size distribution in CV [%]
200	1,000	397	858.7	7,885.1	1,579.36	62	51.5

Assay Class: High Sensitivity DNA Assay
Data Path: C:\...ents and Settings\Bioanalyzer\2015-12-18\2015-12-18_002.xad

Created: 12/18/2015 2:14:45 PM
Modified: 12/18/2015 3:02:17 PM

Gel Image



Assay Class: High Sensitivity DNA Assay
 Data Path: C:\...ents and Settings\Bioanalyzer\2015-12-18\2015-12-18_002.xad

Created: 12/18/2015 2:14:45 PM
 Modified: 12/18/2015 3:02:17 PM

Run Logbook

Description	Number	Source	Category	Sub Category	Time	Time Zone	User	Host
Run ended on port 1 (Number of wells acquired: 12)		Instrument	Run		12/18/2015 2:55:12 PM	(GMT --08:00) Pacific Standard Time	UC Davis	D8XSMGH1
Run started on port 1 (File: C:\Documents and Settings\Bioanalyzer\2015-12-18\2015-12-18_002.xad)		Instrument	Run		12/18/2015 2:14:51 PM	(GMT --08:00) Pacific Standard Time	UC Davis	D8XSMGH1
Product Number : G2938B		Instrument	Run		12/18/2015 2:14:51 PM	(GMT --08:00) Pacific Standard Time	UC Davis	D8XSMGH1
Name :		Instrument	Run		12/18/2015 2:14:51 PM	(GMT --08:00) Pacific Standard Time	UC Davis	D8XSMGH1
Vendor : Agilent Technologies		Instrument	Run		12/18/2015 2:14:51 PM	(GMT --08:00) Pacific Standard Time	UC Davis	D8XSMGH1
Serial# : DE13701086		Instrument	Run		12/18/2015 2:14:51 PM	(GMT --08:00) Pacific Standard Time	UC Davis	D8XSMGH1
Firmware : C.01.069		Instrument	Run		12/18/2015 2:14:51 PM	(GMT --08:00) Pacific Standard Time	UC Davis	D8XSMGH1
Cartridge : Electrode		Instrument	Run		12/18/2015 2:14:51 PM	(GMT --08:00) Pacific Standard Time	UC Davis	D8XSMGH1