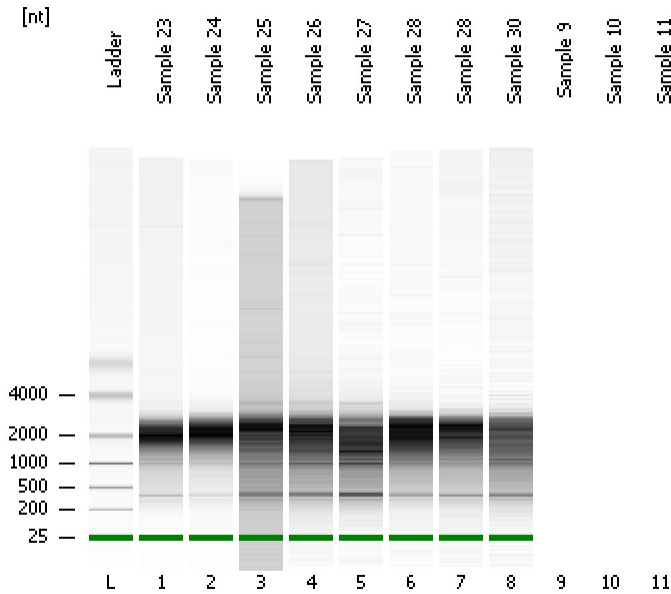


Assay Class: mRNA Pico  
Data Path: C:\...ents and Settings\Bioanalyzer\2016-01-14\2016-01-14\_002.xad

Created: 1/14/2016 1:50:59 PM  
Modified: 1/14/2016 2:11:54 PM

**Electrophoresis File Run Summary**



Instrument Information:

Instrument Name: DE13701086      Firmware: C.01.069  
Serial#: DE13701086      Type: G2938B

Assay Information:

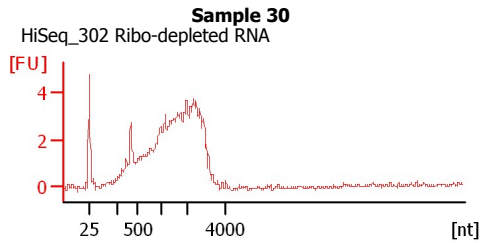
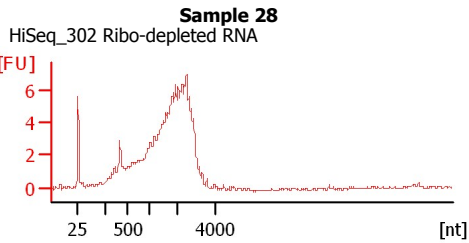
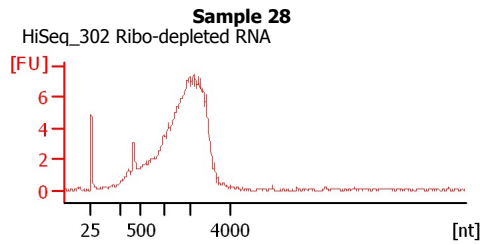
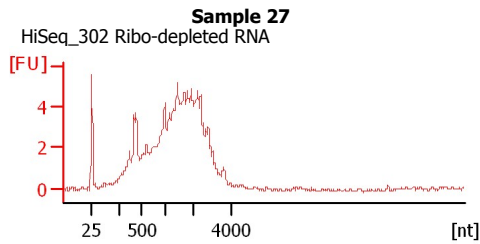
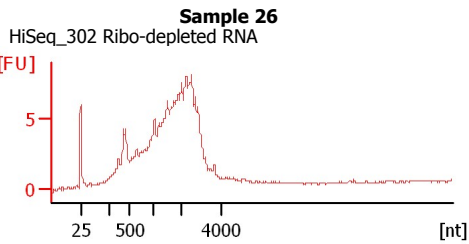
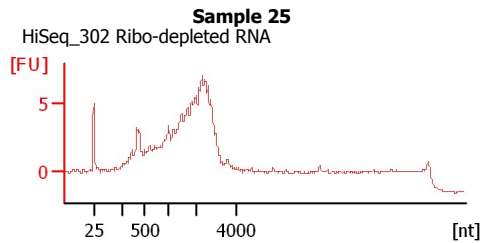
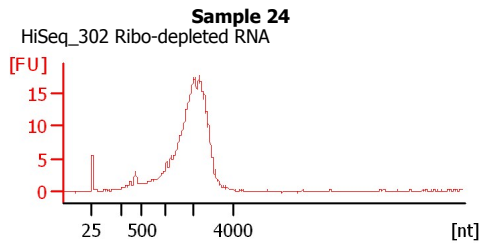
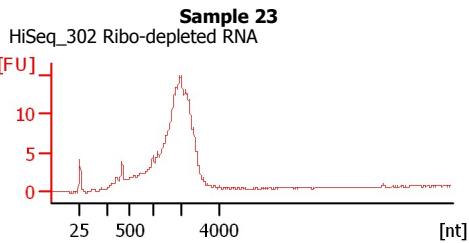
Assay Origin Path: C:\Program Files\Agilent\2100 bioanalyzer\2100 expert\assays\RNA\mRNA Pico Series II.xsy

Assay Class: mRNA Pico  
Version: 2.6  
Assay Comments: mRNA Analysis pg sensitivity

© Copyright 2003 - 2009 Agilent Technologies, Inc.

Chip Information:

Chip Lot #:  
Reagent Kit Lot #:  
Chip Comments:



Assay Class: mRNA Pico  
Data Path: C:\...ents and Settings\Bioanalyzer\2016-01-14\2016-01-14\_002.xad

Created: 1/14/2016 1:50:59 PM  
Modified: 1/14/2016 2:11:54 PM

**Electrophoresis File Run Summary (Chip Summary)**

Sample Name	Sample Comment	Status	Result Label	Result Color
Sample 23	HiSeq_302 Ribo-depleted RNA	✓		
Sample 24	HiSeq_302 Ribo-depleted RNA	✓		
Sample 25	HiSeq_302 Ribo-depleted RNA	✓		
Sample 26	HiSeq_302 Ribo-depleted RNA	✓		
Sample 27	HiSeq_302 Ribo-depleted RNA	✓		
Sample 28	HiSeq_302 Ribo-depleted RNA	✓		
Sample 28	HiSeq_302 Ribo-depleted RNA	✓		
Sample 30	HiSeq_302 Ribo-depleted RNA	✓		
Sample 9				
Sample 10				
Sample 11				
Ladder		✓		

**Chip Lot #****Reagent Kit Lot #****Chip Comments :**

Assay Class: mRNA Pico  
Data Path: C:\...ents and Settings\Bioanalyzer\2016-01-14\2016-01-14\_002.xad

Created: 1/14/2016 1:50:59 PM  
Modified: 1/14/2016 2:11:54 PM

**Electrophoresis Assay Details**

**General Analysis Settings**

Number of Available Sample and Ladder Wells (Max.) : 12  
Minimum Visible Range [s] : 14  
Maximum Visible Range [s] : 85  
Start Analysis Time Range [s] : 15  
End Analysis Time Range [s] : 84  
Ladder Concentration [pg/μl] : 1000  
Lower Marker Concentration [pg/μl] : 0  
Upper Marker Concentration [pg/μl] : 0  
Used Lower Marker for Quantitation  
Standard Curve Fit is Logarithmic  
Show Data Aligned to Lower Marker

**Integrator Settings**

Integration Start Time [s] : 15  
Integration End Time [s] : 84  
Slope Threshold : 0.2  
Height Threshold [FU] : 0.5  
Area Threshold : 0.1  
Width Threshold [s] : 0.2  
Baseline Plateau [s] : 0.5

**Filter Settings**

Filter Width [s] : 0.5  
Polynomial Order : 4

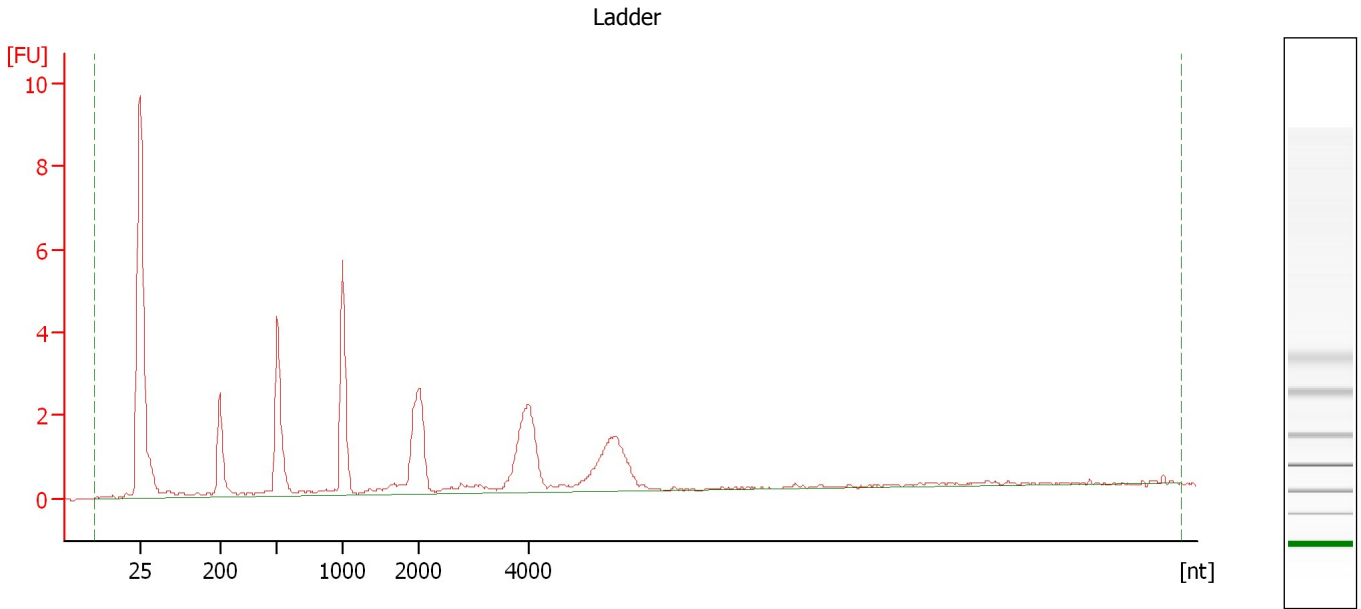
**Ladder**

Ladder Peak	Size
1	25
2	200
3	500
4	1000
5	2000
6	4000

Assay Class: mRNA Pico  
Data Path: C:\...ents and Settings\Bioanalyzer\2016-01-14\2016-01-14\_002.xad

Created: 1/14/2016 1:50:59 PM  
Modified: 1/14/2016 2:11:54 PM

**Electropherogram Summary**



**Overall Results for Ladder**

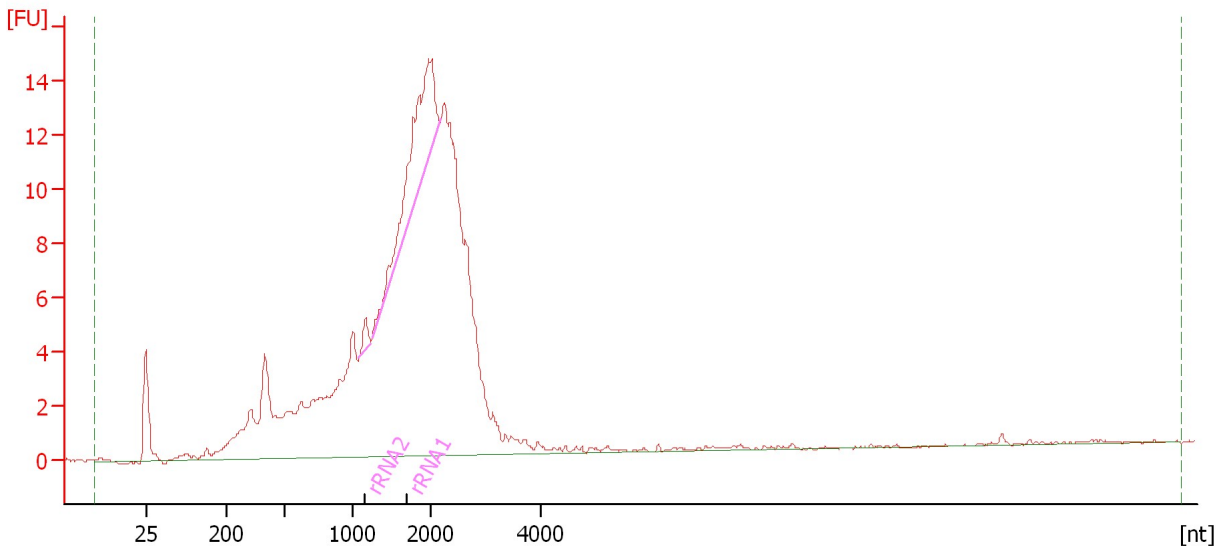
RNA Area: 43.8                      RNA Concentration: 1,000 pg/μl

Assay Class: mRNA Pico  
Data Path: C:\...ents and Settings\Bioanalyzer\2016-01-14\2016-01-14\_002.xad

Created: 1/14/2016 1:50:59 PM  
Modified: 1/14/2016 2:11:54 PM

**Electropherogram Summary Continued ...**

Sample 23 [ HiSeq\_302 Ribo-depleted RNA ]



**Overall Results for sample 1 : Sample 23**

RNA Area: 261.3                      rRNA Contamination: 7.4 %  
RNA Concentration: 5,961 pg/μl

**Fragment table for sample 1 : Sample 23**

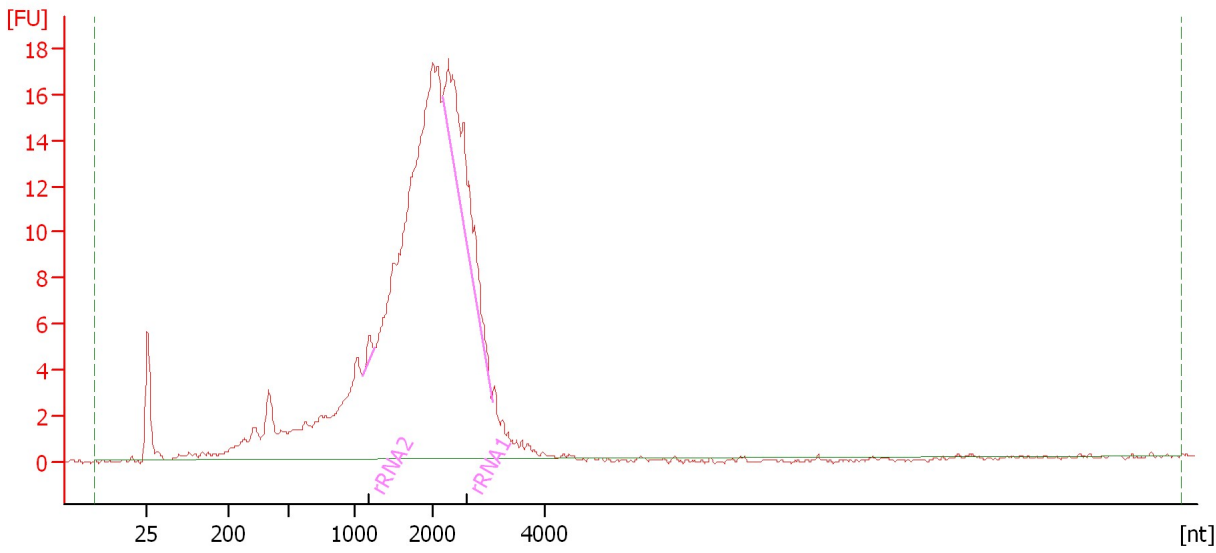
Name	Start Size [nt]	End Size [nt]	Area	% of total Area
rRNA2	1,094	1,237	1.2	0.5
rRNA1	1,258	2,178	18.0	6.9

Assay Class: mRNA Pico  
Data Path: C:\...ents and Settings\Bioanalyzer\2016-01-14\2016-01-14\_002.xad

Created: 1/14/2016 1:50:59 PM  
Modified: 1/14/2016 2:11:54 PM

**Electropherogram Summary Continued ...**

Sample 24 [ HiSeq\_302 Ribo-depleted RNA ]



**Overall Results for sample 2 : Sample 24**

RNA Area: 296.9                      rRNA Contamination: 6.6 %  
RNA Concentration: 6,773 pg/μl

**Fragment table for sample 2 : Sample 24**

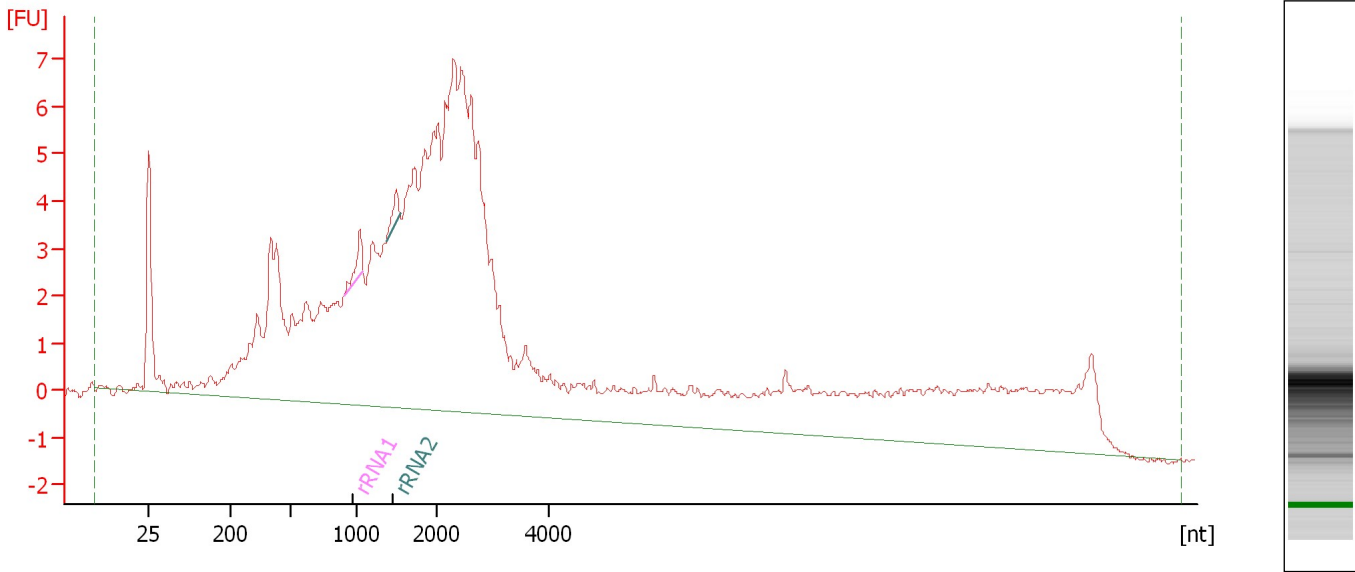
Name	Start Size [nt]	End Size [nt]	Area	% of total Area
rRNA2	1,111	1,263	1.2	0.4
rRNA1	2,179	3,049	18.6	6.3

Assay Class: mRNA Pico  
Data Path: C:\...ents and Settings\Bioanalyzer\2016-01-14\2016-01-14\_002.xad

Created: 1/14/2016 1:50:59 PM  
Modified: 1/14/2016 2:11:54 PM

**Electropherogram Summary Continued ...**

Sample 25 [ HiSeq\_302 Ribo-depleted RNA ]



**Overall Results for sample 3 : Sample 25**

RNA Area: 233.0                      rRNA Contamination: 0.9 %  
RNA Concentration: 5,314 pg/μl

**Fragment table for sample 3 : Sample 25**

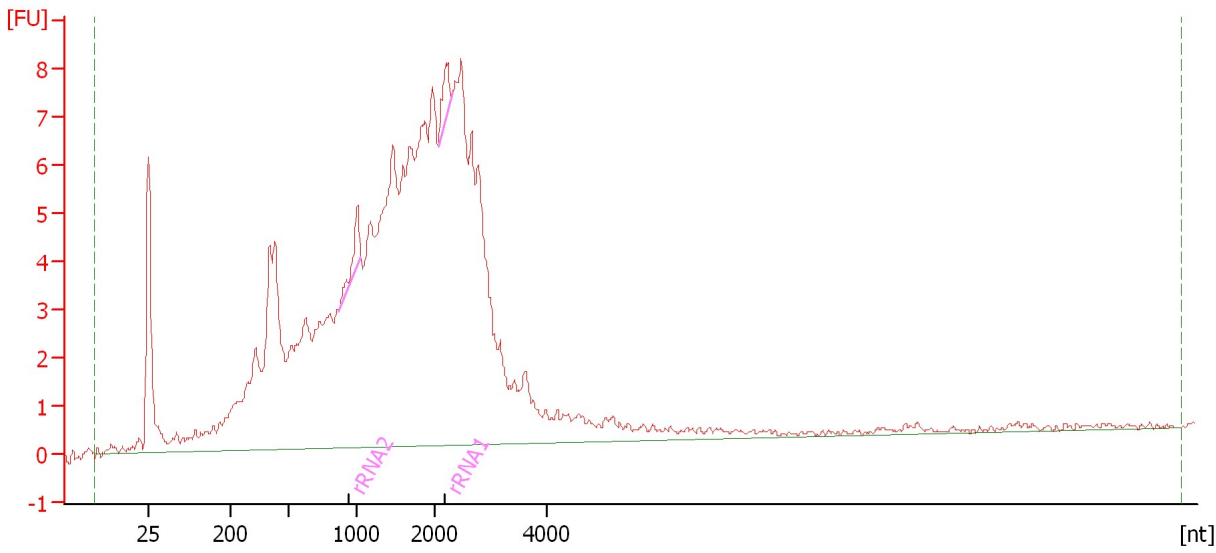
Name	Start Size [nt]	End Size [nt]	Area	% of total Area
rRNA1	902	1,076	1.2	0.5
rRNA2	1,370	1,542	0.8	0.4

Assay Class: mRNA Pico  
Data Path: C:\...ents and Settings\Bioanalyzer\2016-01-14\2016-01-14\_002.xad

Created: 1/14/2016 1:50:59 PM  
Modified: 1/14/2016 2:11:54 PM

**Electropherogram Summary Continued ...**

Sample 26 [ HiSeq\_302 Ribo-depleted RNA ]



**Overall Results for sample 4 : Sample 26**

RNA Area: 233.7                      rRNA Contamination: 1.5 %  
RNA Concentration: 5,330 pg/μl

**Fragment table for sample 4 : Sample 26**

Name	Start Size [nt]	End Size [nt]	Area	% of total Area
rRNA2	876	1,063	1.9	0.8
rRNA1	2,066	2,336	1.5	0.7

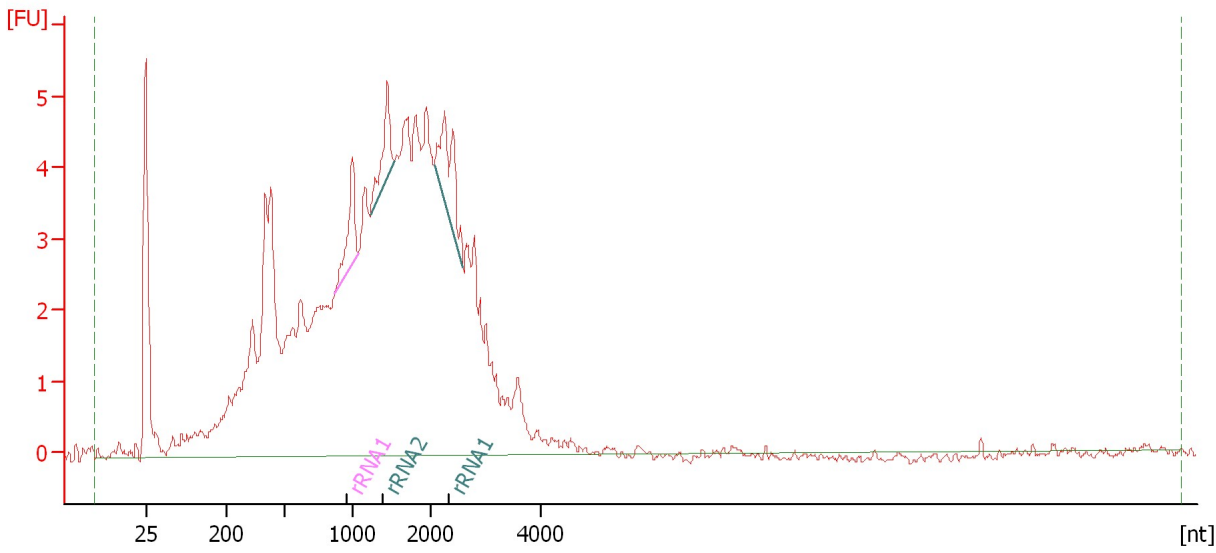


Assay Class: mRNA Pico  
Data Path: C:\...ents and Settings\Bioanalyzer\2016-01-14\2016-01-14\_002.xad

Created: 1/14/2016 1:50:59 PM  
Modified: 1/14/2016 2:11:54 PM

**Electropherogram Summary Continued ...**

Sample 27 [ HiSeq\_302 Ribo-depleted RNA ]



**Overall Results for sample 5 : Sample 27**

RNA Area: 159.2                      rRNA Contamination: 4.8 %  
RNA Concentration: 3,631 pg/μl

**Fragment table for sample 5 : Sample 27**

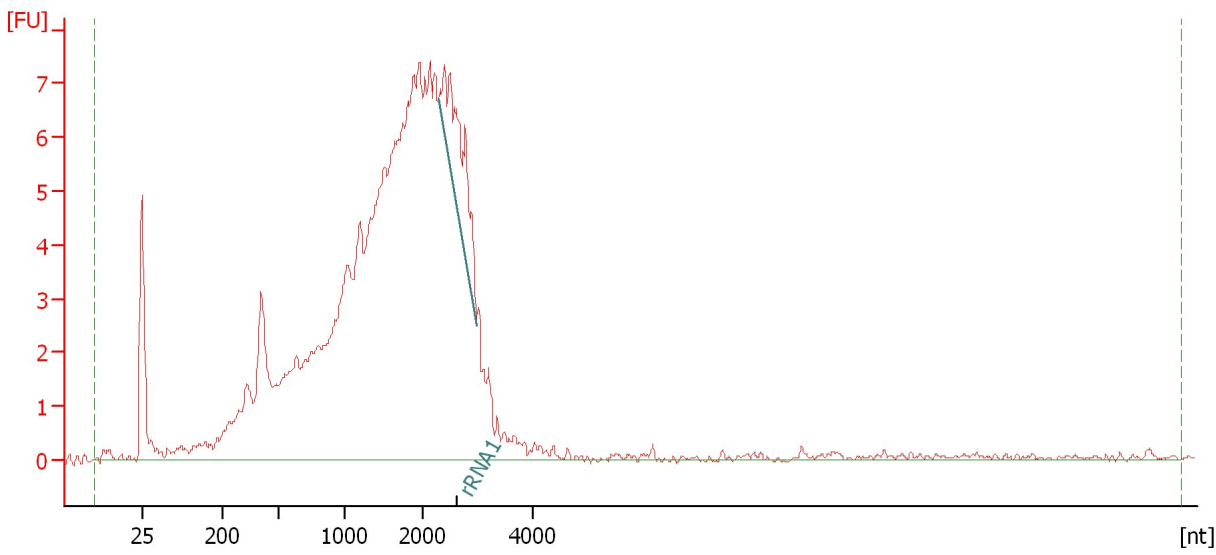
Name	Start Size [nt]	End Size [nt]	Area	% of total Area
rRNA1	869	1,074	2.2	1.4
rRNA2	1,237	1,554	2.1	1.3
rRNA1	2,078	2,594	3.3	2.1

Assay Class: mRNA Pico  
Data Path: C:\...ents and Settings\Bioanalyzer\2016-01-14\2016-01-14\_002.xad

Created: 1/14/2016 1:50:59 PM  
Modified: 1/14/2016 2:11:54 PM

**Electropherogram Summary Continued ...**

Sample 28 [ HiSeq\_302 Ribo-depleted RNA ]



**Overall Results for sample 6 : Sample 28**

RNA Area: 191.1                      rRNA Contamination: 4.2 %  
RNA Concentration: 4,360 pg/μl

**Fragment table for sample 6 : Sample 28**

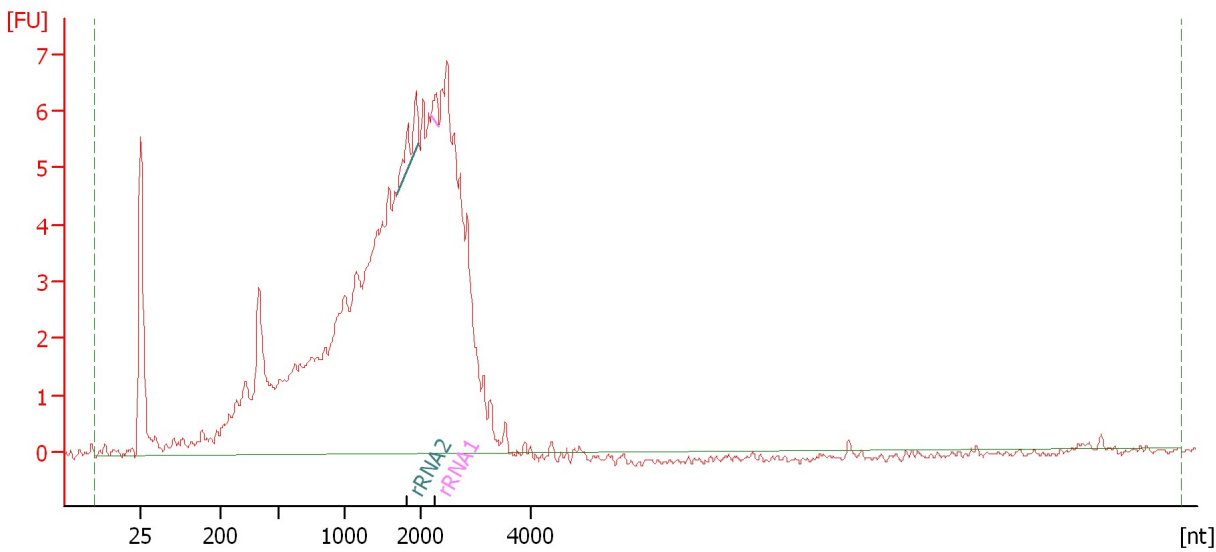
Name	Start Size [nt]	End Size [nt]	Area	% of total Area
rRNA1	2,306	2,989	8.0	4.2

Assay Class: mRNA Pico  
Data Path: C:\...ents and Settings\Bioanalyzer\2016-01-14\2016-01-14\_002.xad

Created: 1/14/2016 1:50:59 PM  
Modified: 1/14/2016 2:11:54 PM

**Electropherogram Summary Continued ...**

Sample 28 [ HiSeq\_302 Ribo-depleted RNA ]



**Overall Results for sample 7 : Sample 28**

RNA Area: 155.7                      rRNA Contamination: 1.4 %  
RNA Concentration: 3,553 pg/μl

**Fragment table for sample 7 : Sample 28**

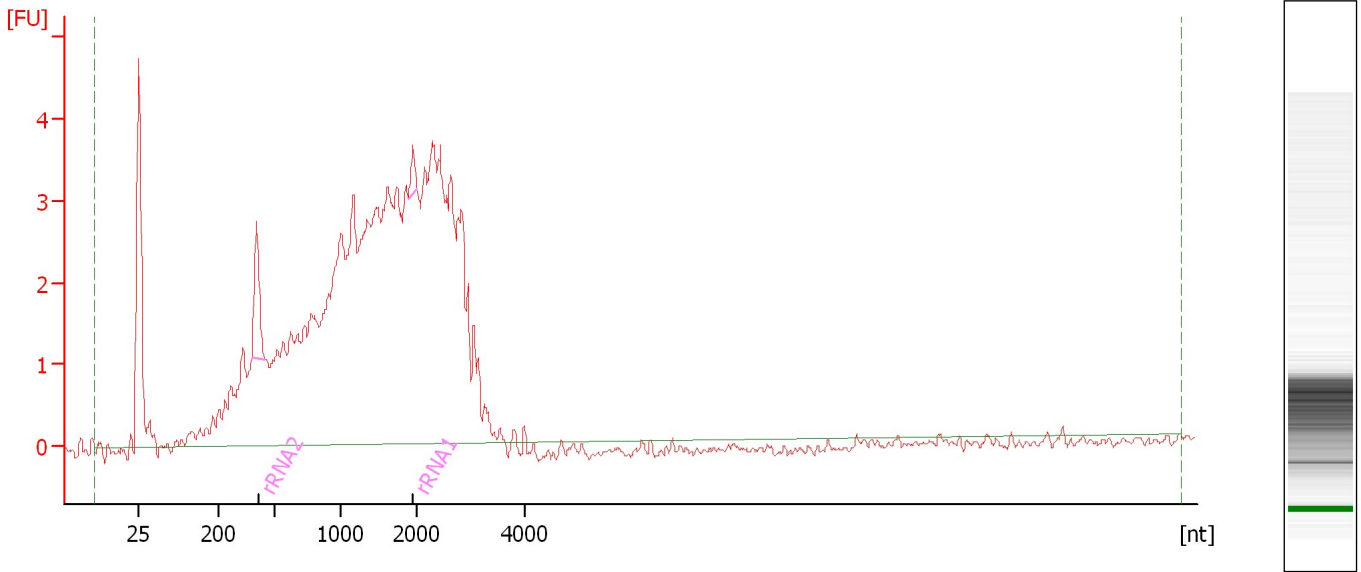
Name	Start Size [nt]	End Size [nt]	Area	% of total Area
rRNA2	1,689	1,979	1.7	1.1
rRNA1	2,190	2,335	0.4	0.3

Assay Class: mRNA Pico  
Data Path: C:\...ents and Settings\Bioanalyzer\2016-01-14\2016-01-14\_002.xad

Created: 1/14/2016 1:50:59 PM  
Modified: 1/14/2016 2:11:54 PM

**Electropherogram Summary Continued ...**

Sample 30 [ HiSeq\_302 Ribo-depleted RNA ]



**Overall Results for sample 8 : Sample 30**

RNA Area: 105.5                      rRNA Contamination: 2.6 %  
RNA Concentration: 2,407 pg/μl

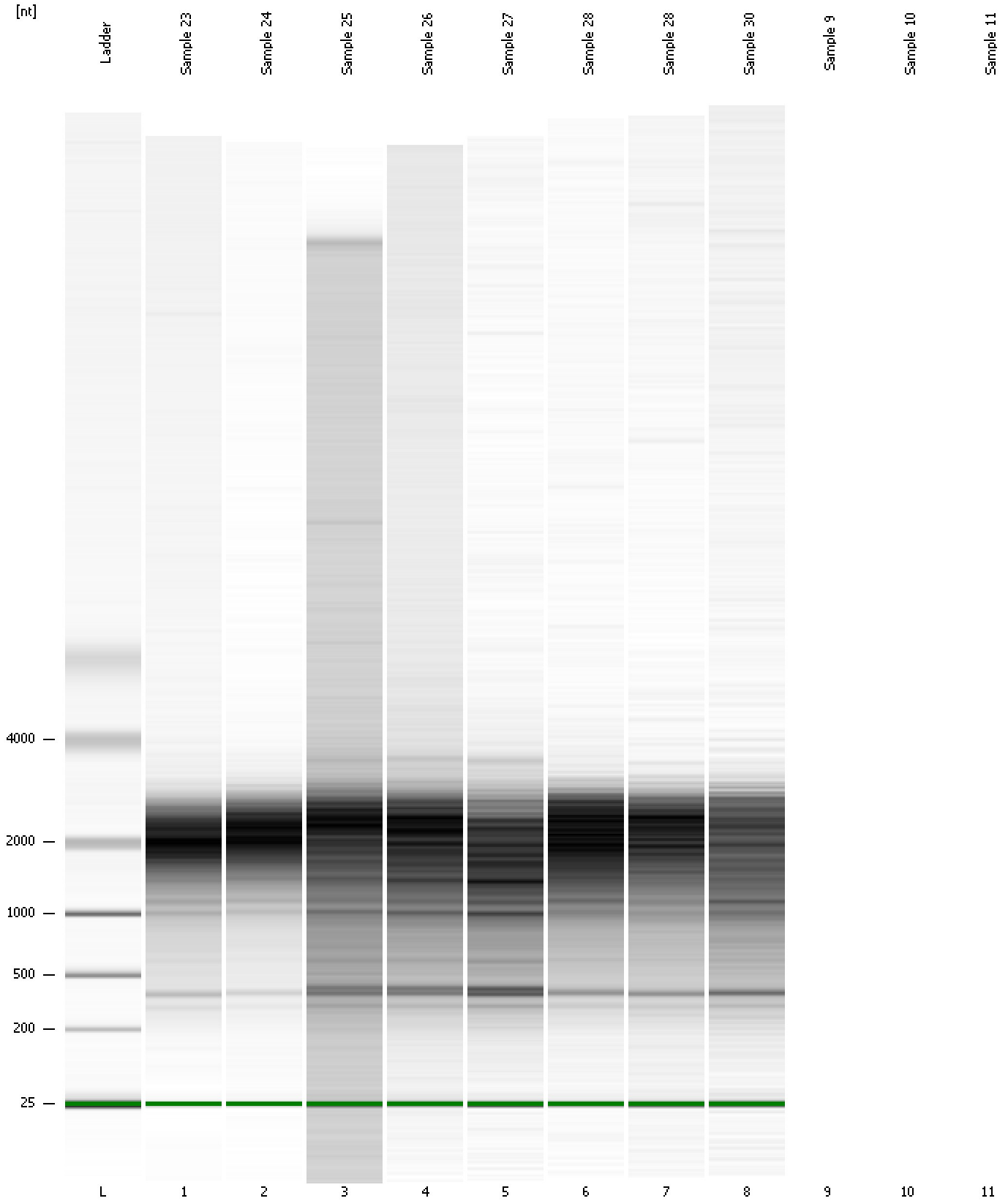
**Fragment table for sample 8 : Sample 30**

Name	Start Size [nt]	End Size [nt]	Area	% of total Area
rRNA2	378	449	2.3	2.1
rRNA1	1,893	2,027	0.5	0.4

Assay Class: mRNA Pico  
Data Path: C:\...ents and Settings\Bioanalyzer\2016-01-14\2016-01-14\_002.xad

Created: 1/14/2016 1:50:59 PM  
Modified: 1/14/2016 2:11:54 PM

**Gel Image**



Assay Class: mRNA Pico  
Data Path: C:\...ents and Settings\Bioanalyzer\2016-01-14\2016-01-14\_002.xad

Created: 1/14/2016 1:50:59 PM  
Modified: 1/14/2016 2:11:54 PM

**Invalid Samples**

Sample 9 has not been run, no results available.

Sample 10 has not been run, no results available.

Sample 11 has not been run, no results available.

Assay Class: mRNA Pico  
 Data Path: C:\...ents and Settings\Bioanalyzer\2016-01-14\2016-01-14\_002.xad

Created: 1/14/2016 1:50:59 PM  
 Modified: 1/14/2016 2:11:54 PM

**Run Logbook**

Description	Number	Source	Category	Sub Category	Time	Time Zone	User	Host
Run ended on port 1 (Number of wells acquired: 9)		Instrument	Run		1/14/2016 2:11:51 PM	(GMT --08:00) Pacific Standard Time	UC Davis	D8XSMGH1
Run started on port 1 (File: C:\Documents and Settings\Bioanalyzer\2016-01-14\2016-01-14_002.xad)		Instrument	Run		1/14/2016 1:51:04 PM	(GMT --08:00) Pacific Standard Time	UC Davis	D8XSMGH1
Product Number : G2938B		Instrument	Run		1/14/2016 1:51:04 PM	(GMT --08:00) Pacific Standard Time	UC Davis	D8XSMGH1
Name :		Instrument	Run		1/14/2016 1:51:04 PM	(GMT --08:00) Pacific Standard Time	UC Davis	D8XSMGH1
Vendor : Agilent Technologies		Instrument	Run		1/14/2016 1:51:04 PM	(GMT --08:00) Pacific Standard Time	UC Davis	D8XSMGH1
Serial# : DE13701086		Instrument	Run		1/14/2016 1:51:04 PM	(GMT --08:00) Pacific Standard Time	UC Davis	D8XSMGH1
Firmware : C.01.069		Instrument	Run		1/14/2016 1:51:04 PM	(GMT --08:00) Pacific Standard Time	UC Davis	D8XSMGH1
Cartridge : Electrode		Instrument	Run		1/14/2016 1:51:04 PM	(GMT --08:00) Pacific Standard Time	UC Davis	D8XSMGH1