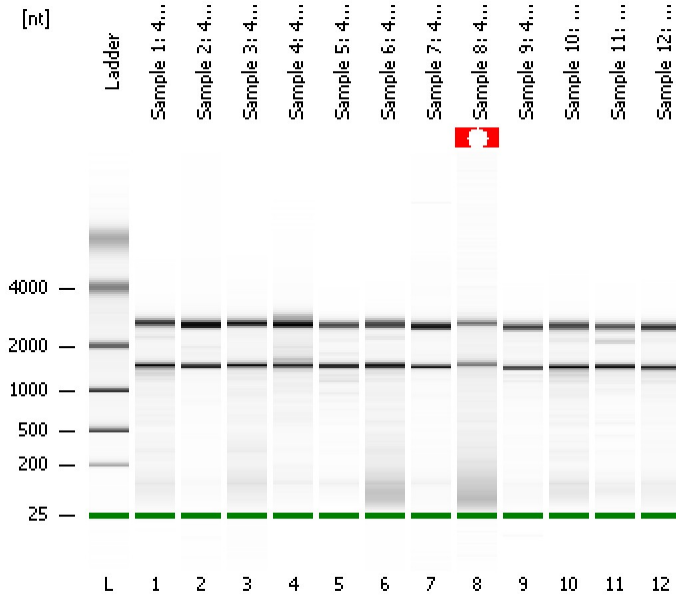


Assay Class: Prokaryote Total RNA Nano
Data Path: C:\...ents and Settings\Bioanalyzer\2016-01-19\2016-01-19_001.xad

Created: 1/19/2016 12:49:41 PM
Modified: 1/19/2016 1:13:30 PM

Electrophoresis File Run Summary



Instrument Information:

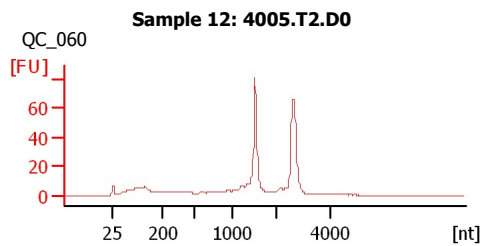
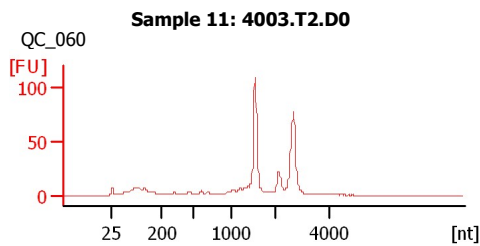
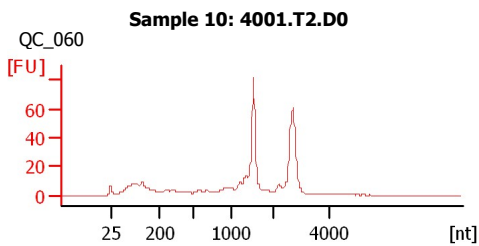
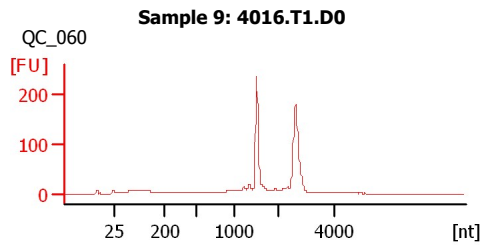
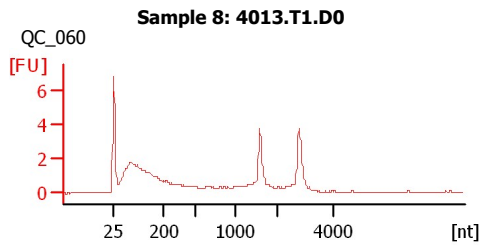
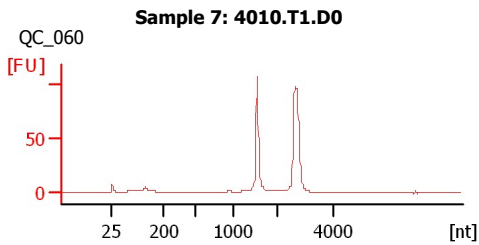
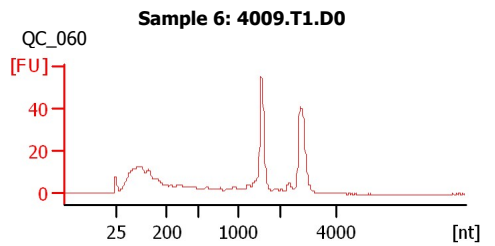
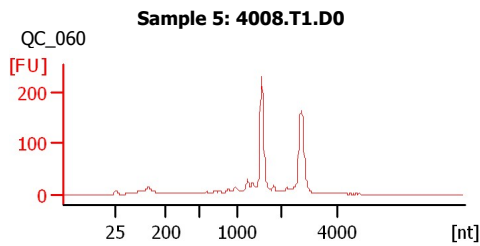
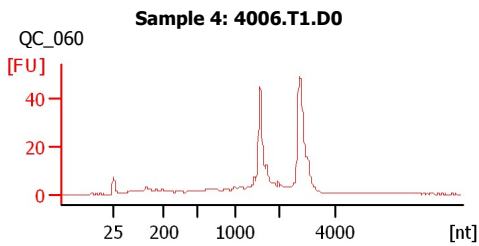
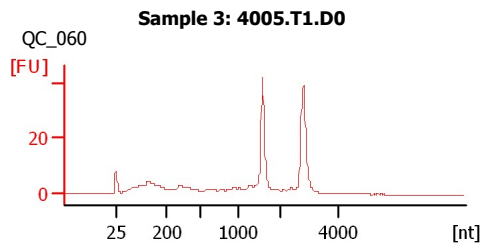
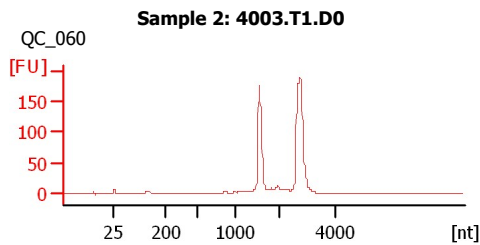
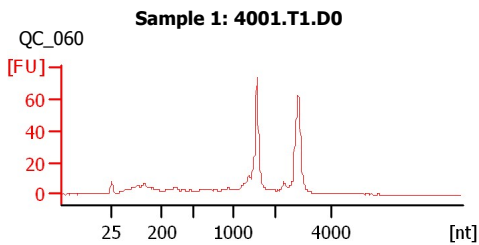
Instrument Name: DE13701086 Firmware: C.01.069
Serial#: DE13701086 Type: G2938B

Assay Information:

Assay Origin Path: C:\Program Files\Agilent\2100 bioanalyzer\2100 expert\assays\RNA\Prokaryote Total RNA Nano Series II.xsy
Assay Class: Prokaryote Total RNA Nano
Version: 2.5
Assay Comments: Total RNA Analysis ng sensitivity (Prokaryote)
© Copyright 2003 - 2009 Agilent Technologies, Inc.

Chip Information:

Chip Lot #:
Reagent Kit Lot #:
Chip Comments:



Assay Class: Prokaryote Total RNA Nano
Data Path: C:\...ents and Settings\Bioanalyzer\2016-01-19\2016-01-19_001.xad

Created: 1/19/2016 12:49:41 PM
Modified: 1/19/2016 1:13:30 PM

Electrophoresis File Run Summary (Chip Summary)

Sample Name	Sample Comment	Status	Result Label	Result Color
Sample 1: 4001.T1.D0	QC_060	✓		
Sample 2: 4003.T1.D0	QC_060	✓		
Sample 3: 4005.T1.D0	QC_060	✓		
Sample 4: 4006.T1.D0	QC_060	✓		
Sample 5: 4008.T1.D0	QC_060	✓		
Sample 6: 4009.T1.D0	QC_060	✓		
Sample 7: 4010.T1.D0	QC_060	✓		
Sample 8: 4013.T1.D0	QC_060	✓		
Sample 9: 4016.T1.D0	QC_060	✓		
Sample 10: 4001.T2.D0	QC_060	✓		
Sample 11: 4003.T2.D0	QC_060	✓		
Sample 12: 4005.T2.D0	QC_060	✓		
Ladder		✓		

Chip Lot #**Reagent Kit Lot #****Chip Comments :**

Assay Class: Prokaryote Total RNA Nano
Data Path: C:\...ents and Settings\Bioanalyzer\2016-01-19\2016-01-19_001.xad

Created: 1/19/2016 12:49:41 PM
Modified: 1/19/2016 1:13:30 PM

Electrophoresis Assay Details

General Analysis Settings

Number of Available Sample and Ladder Wells (Max.) : 13
Minimum Visible Range [s] : 17
Maximum Visible Range [s] : 70
Start Analysis Time Range [s] : 19
End Analysis Time Range [s] : 69
Ladder Concentration [ng/ μ l] : 150
Lower Marker Concentration [ng/ μ l] : 0
Upper Marker Concentration [ng/ μ l] : 0
Used Lower Marker for Quantitation
Standard Curve Fit is Logarithmic
Show Data Aligned to Lower Marker

Integrator Settings

Integration Start Time [s] : 19
Integration End Time [s] : 69
Slope Threshold : 0.6
Height Threshold [FU] : 0.5
Area Threshold : 0.2
Width Threshold [s] : 0.5
Baseline Plateau [s] : 6

Filter Settings

Filter Width [s] : 0.5
Polynomial Order : 4

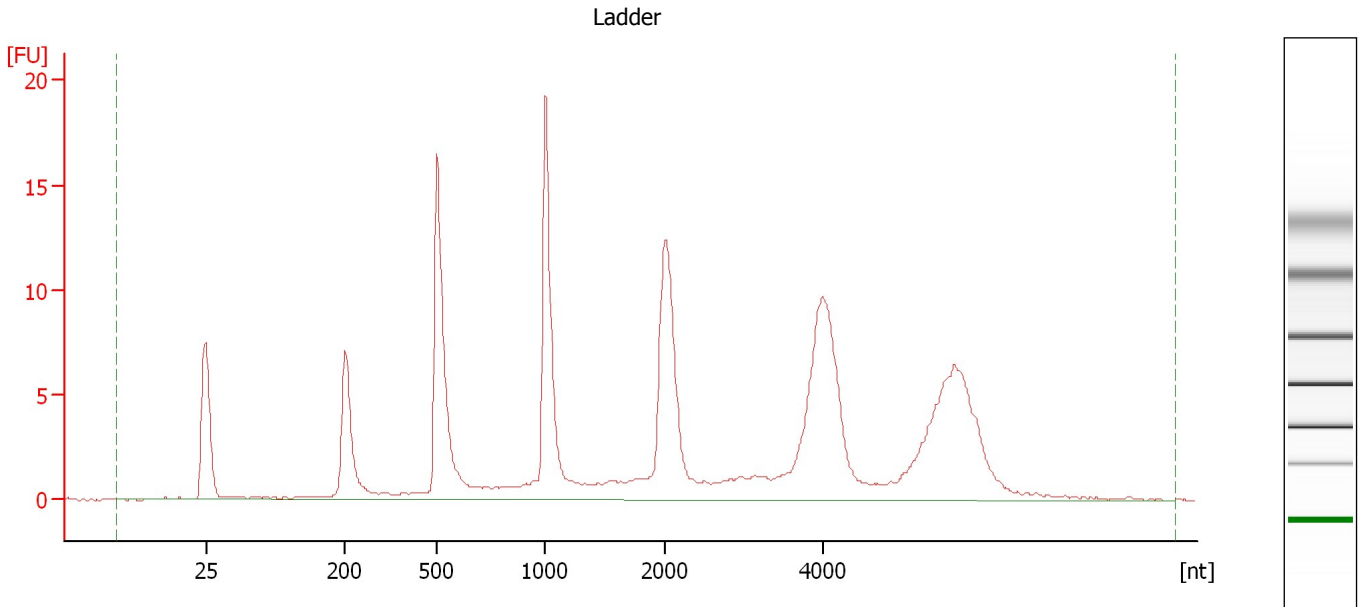
Ladder

Ladder Peak	Size
1	25
2	200
3	500
4	1000
5	2000
6	4000

Assay Class: Prokaryote Total RNA Nano
Data Path: C:\...ents and Settings\Bioanalyzer\2016-01-19\2016-01-19_001.xad

Created: 1/19/2016 12:49:41 PM
Modified: 1/19/2016 1:13:30 PM

Electropherogram Summary



Overall Results for Ladder

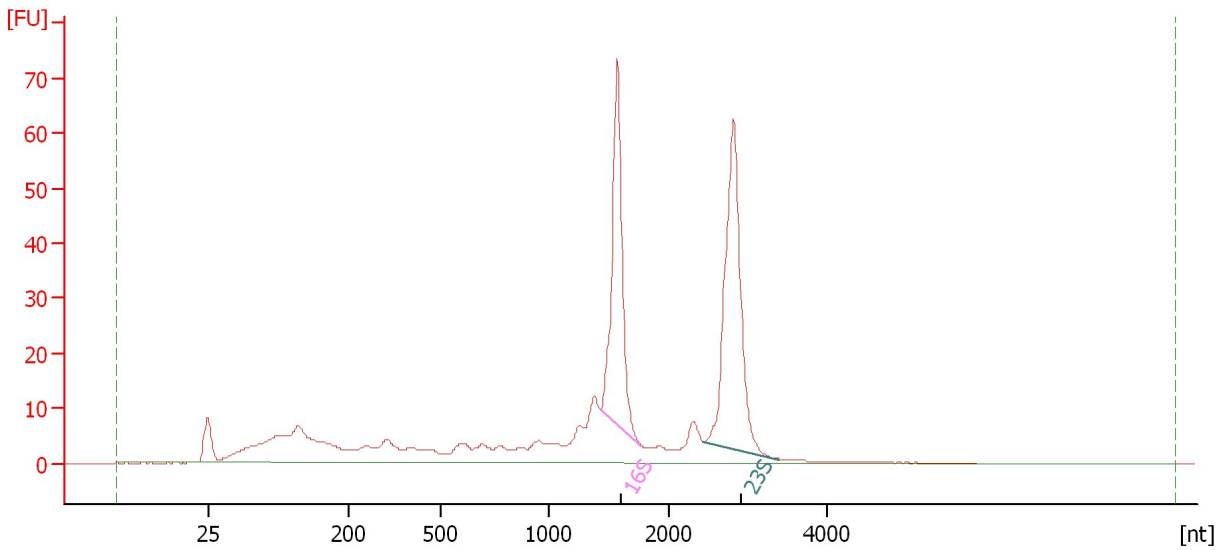
RNA Area: 172.3 RNA Concentration: 150 ng/μl

Assay Class: Prokaryote Total RNA Nano
Data Path: C:\...ents and Settings\Bioanalyzer\2016-01-19\2016-01-19_001.xad

Created: 1/19/2016 12:49:41 PM
Modified: 1/19/2016 1:13:30 PM

Electropherogram Summary Continued ...

Sample 1: 4001.T1.D0 [QC_060]



Overall Results for sample 1 : Sample 1: 4001.T1.D0

RNA Area: 448.6 rRNA Ratio [23s / 16s]: 1.3
RNA Concentration: 390 ng/μl RNA Integrity Number (RIN): 7.8 (B.02.08)

Fragment table for sample 1 : Sample 1: 4001.T1.D0

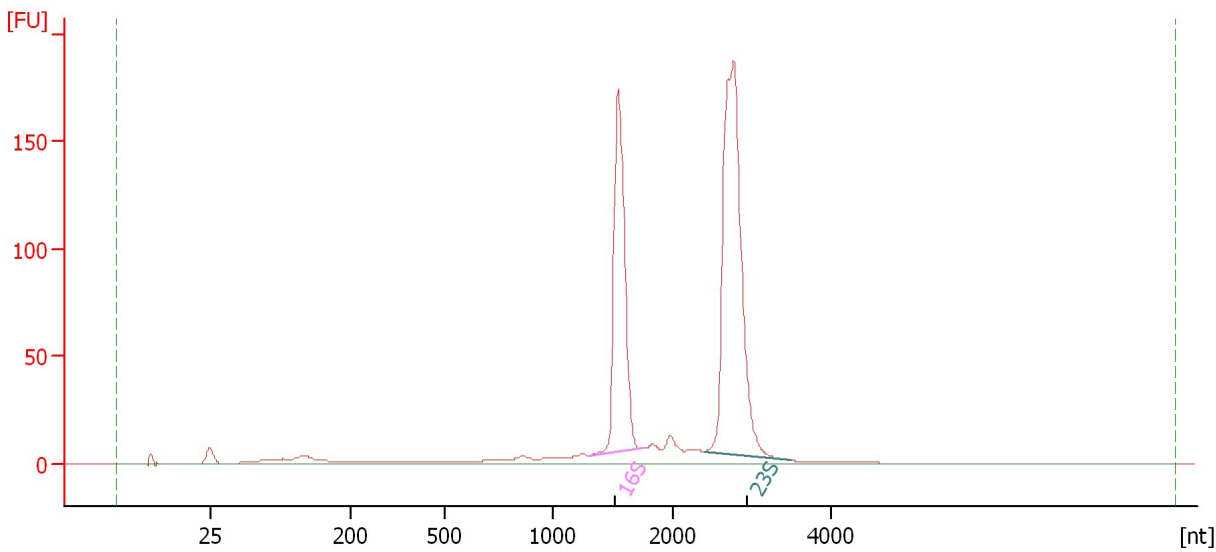
Name	Start Size [nt]	End Size [nt]	Area	% of total Area
16S	1,423	1,770	80.9	18.0
23S	2,436	3,397	102.8	22.9

Assay Class: Prokaryote Total RNA Nano
Data Path: C:\...ents and Settings\Bioanalyzer\2016-01-19\2016-01-19_001.xad

Created: 1/19/2016 12:49:41 PM
Modified: 1/19/2016 1:13:30 PM

Electropherogram Summary Continued ...

Sample 2: 4003.T1.D0 [QC_060]



Overall Results for sample 2 : Sample 2: 4003.T1.D0

RNA Area: 812.0 rRNA Ratio [23s / 16s]: 1.6
RNA Concentration: 707 ng/μl RNA Integrity Number (RIN): 10 (B.02.08)

Fragment table for sample 2 : Sample 2: 4003.T1.D0

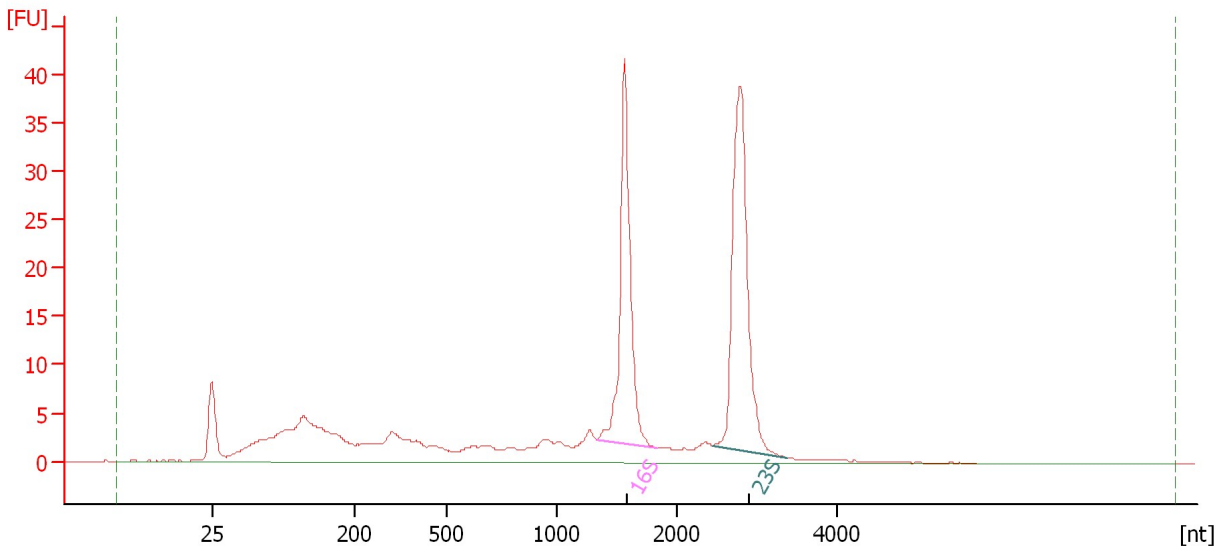
Name	Start Size [nt]	End Size [nt]	Area	% of total Area
16S	1,303	1,746	225.3	27.7
23S	2,396	3,475	369.2	45.5

Assay Class: Prokaryote Total RNA Nano
Data Path: C:\...ents and Settings\Bioanalyzer\2016-01-19\2016-01-19_001.xad

Created: 1/19/2016 12:49:41 PM
Modified: 1/19/2016 1:13:30 PM

Electropherogram Summary Continued ...

Sample 3: 4005.T1.D0 [QC_060]



Overall Results for sample 3 : Sample 3: 4005.T1.D0

RNA Area: 258.3 rRNA Ratio [23s / 16s]: 1.3
RNA Concentration: 225 ng/μl RNA Integrity Number (RIN): 8.2 (B.02.08)

Fragment table for sample 3 : Sample 3: 4005.T1.D0

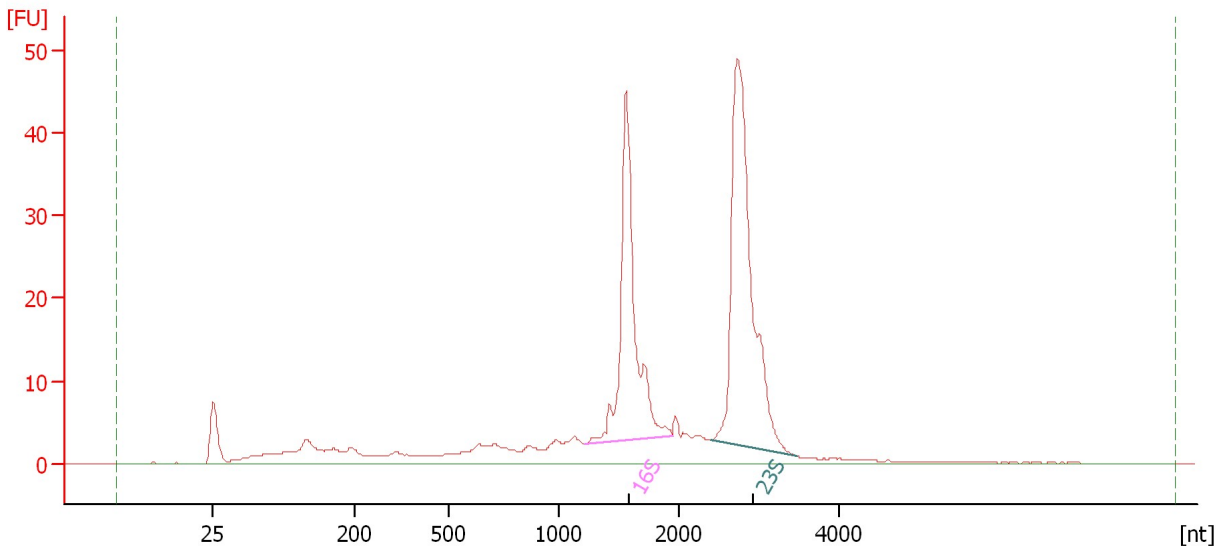
Name	Start Size [nt]	End Size [nt]	Area	% of total Area
16S	1,334	1,837	48.7	18.9
23S	2,450	3,377	62.2	24.1

Assay Class: Prokaryote Total RNA Nano
Data Path: C:\...ents and Settings\Bioanalyzer\2016-01-19\2016-01-19_001.xad

Created: 1/19/2016 12:49:41 PM
Modified: 1/19/2016 1:13:30 PM

Electropherogram Summary Continued ...

Sample 4: 4006.T1.D0 [QC_060]



Overall Results for sample 4 : Sample 4: 4006.T1.D0

RNA Area: 316.9 rRNA Ratio [23s / 16s]: 1.5
RNA Concentration: 276 ng/μl RNA Integrity Number (RIN): 9.2 (B.02.08)

Fragment table for sample 4 : Sample 4: 4006.T1.D0

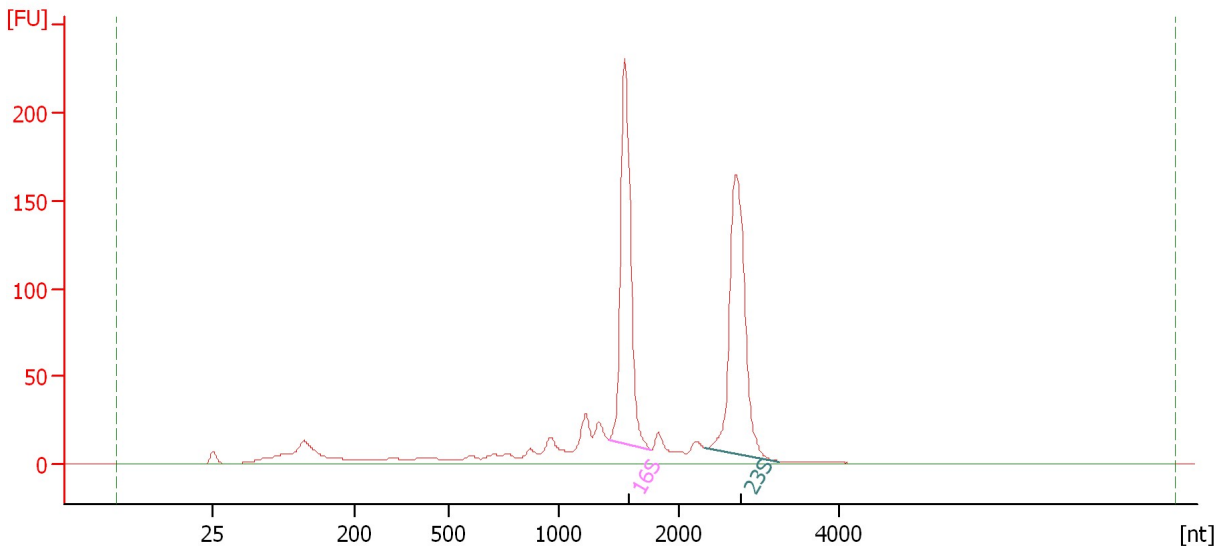
Name	Start Size [nt]	End Size [nt]	Area	% of total Area
16S	1,222	1,944	70.5	22.3
23S	2,383	3,483	103.8	32.7

Assay Class: Prokaryote Total RNA Nano
Data Path: C:\...ents and Settings\Bioanalyzer\2016-01-19\2016-01-19_001.xad

Created: 1/19/2016 12:49:41 PM
Modified: 1/19/2016 1:13:30 PM

Electropherogram Summary Continued ...

Sample 5: 4008.T1.D0 [QC_060]



Overall Results for sample 5 : Sample 5: 4008.T1.D0

RNA Area: 987.1 rRNA Ratio [23s / 16s]: 1.0
RNA Concentration: 859 ng/μl RNA Integrity Number (RIN): 8.6 (B.02.08)

Fragment table for sample 5 : Sample 5: 4008.T1.D0

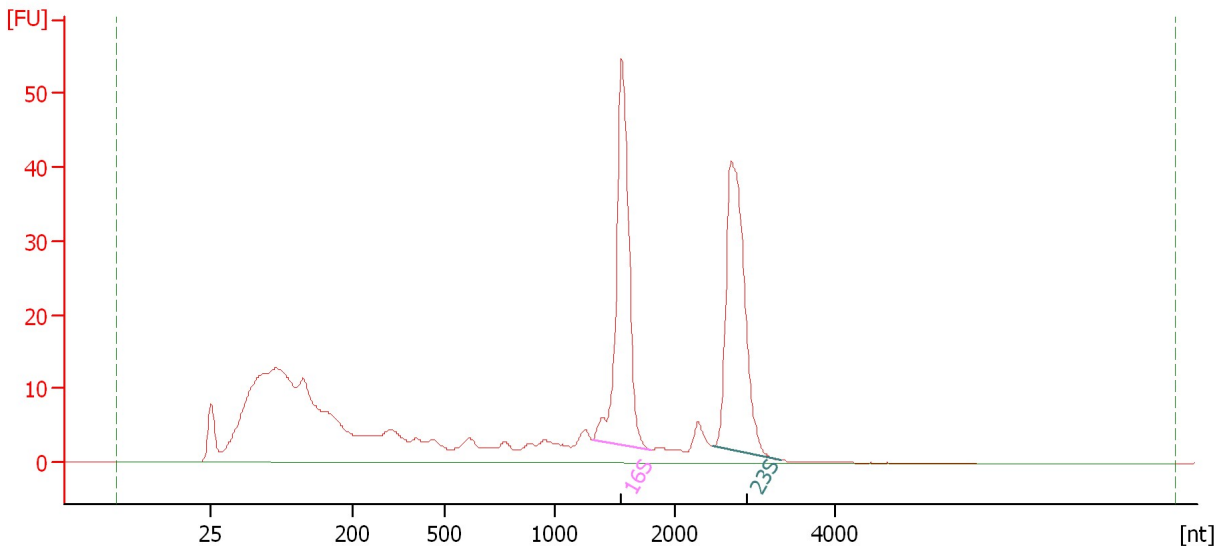
Name	Start Size [nt]	End Size [nt]	Area	% of total Area
16S	1,416	1,768	270.4	27.4
23S	2,330	3,241	273.5	27.7

Assay Class: Prokaryote Total RNA Nano
Data Path: C:\...ents and Settings\Bioanalyzer\2016-01-19\2016-01-19_001.xad

Created: 1/19/2016 12:49:41 PM
Modified: 1/19/2016 1:13:30 PM

Electropherogram Summary Continued ...

Sample 6: 4009.T1.D0 [QC_060]



Overall Results for sample 6 : Sample 6: 4009.T1.D0

RNA Area: 478.0 rRNA Ratio [23s / 16s]: 1.0
RNA Concentration: 416 ng/μl RNA Integrity Number (RIN): 8.1 (B.02.08)

Fragment table for sample 6 : Sample 6: 4009.T1.D0

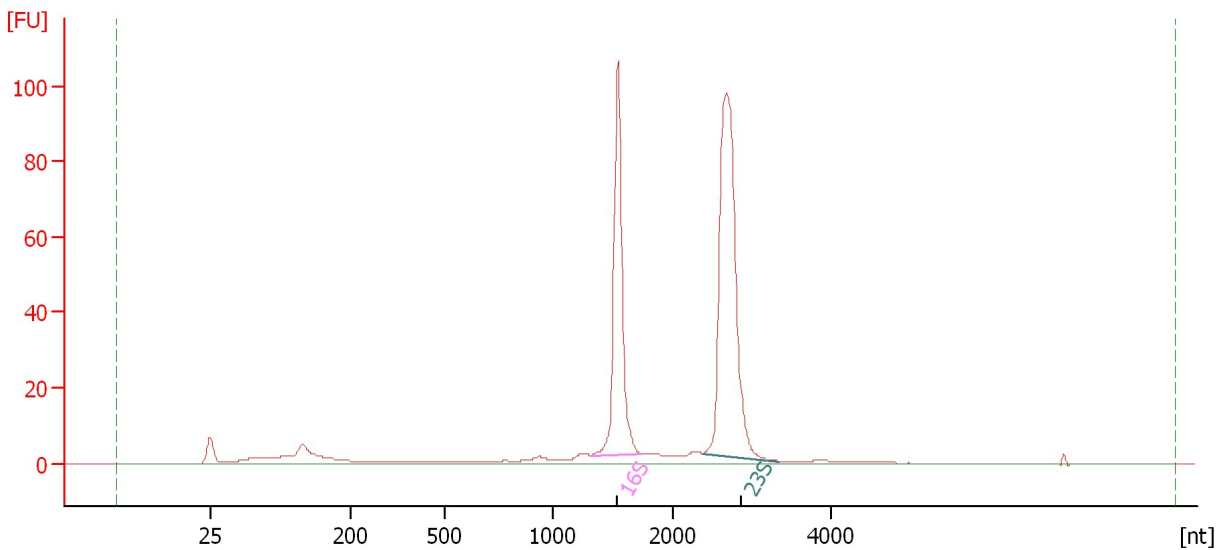
Name	Start Size [nt]	End Size [nt]	Area	% of total Area
16S	1,314	1,800	82.0	17.2
23S	2,477	3,325	80.7	16.9

Assay Class: Prokaryote Total RNA Nano
Data Path: C:\...ents and Settings\Bioanalyzer\2016-01-19\2016-01-19_001.xad

Created: 1/19/2016 12:49:41 PM
Modified: 1/19/2016 1:13:30 PM

Electropherogram Summary Continued ...

Sample 7: 4010.T1.D0 [QC_060]



Overall Results for sample 7 : Sample 7: 4010.T1.D0

RNA Area: 387.5 rRNA Ratio [23s / 16s]: 1.6
RNA Concentration: 337 ng/μl RNA Integrity Number (RIN): 9.8 (B.02.08)

Fragment table for sample 7 : Sample 7: 4010.T1.D0

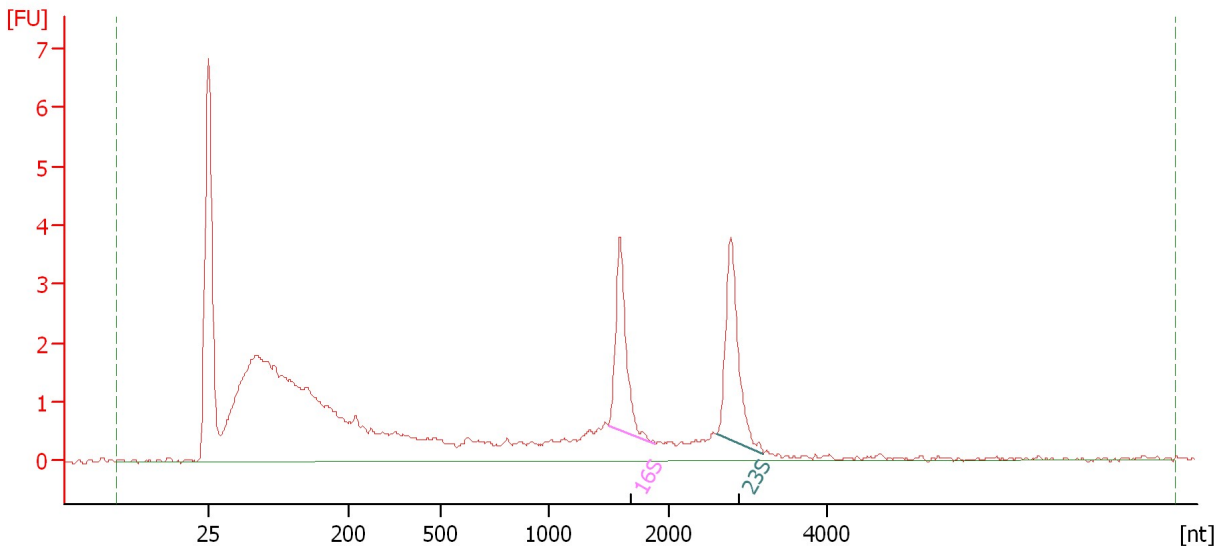
Name	Start Size [nt]	End Size [nt]	Area	% of total Area
16S	1,321	1,746	106.6	27.5
23S	2,369	3,340	173.7	44.8

Assay Class: Prokaryote Total RNA Nano
Data Path: C:\...ents and Settings\Bioanalyzer\2016-01-19\2016-01-19_001.xad

Created: 1/19/2016 12:49:41 PM
Modified: 1/19/2016 1:13:30 PM

Electropherogram Summary Continued ...

Sample 8: 4013.T1.D0 [QC_060]



Overall Results for sample 8 : Sample 8: 4013.T1.D0

RNA Area: 56.0 rRNA Ratio [23s / 16s]: 1.1
RNA Concentration: 49 ng/μl RNA Integrity Number (RIN): N/A (B.02.08)

Fragment table for sample 8 : Sample 8: 4013.T1.D0

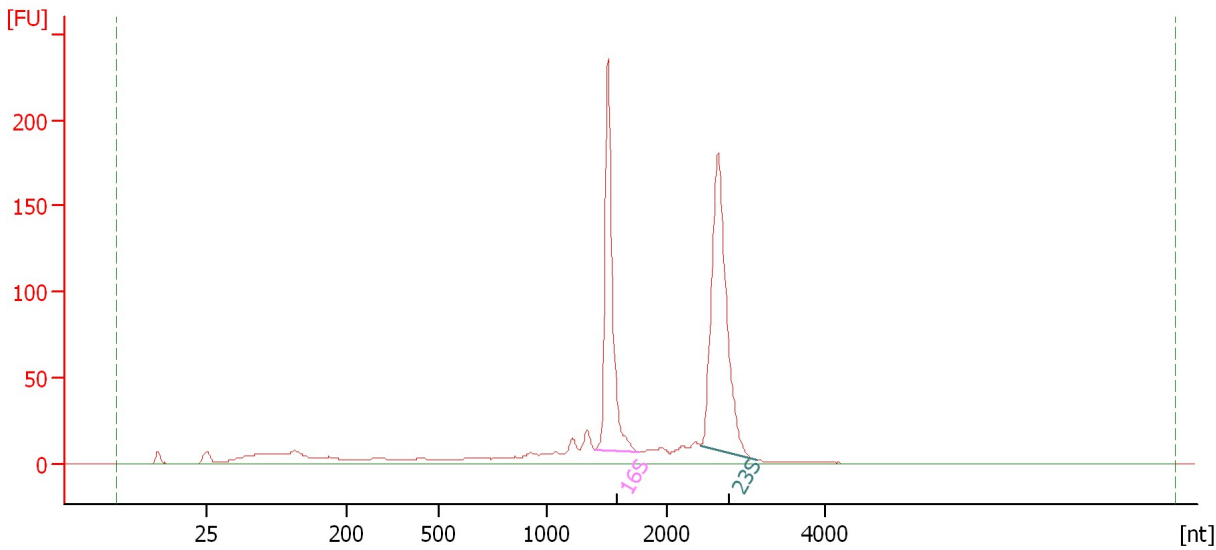
Name	Start Size [nt]	End Size [nt]	Area	% of total Area
16S	1,494	1,886	4.2	7.6
23S	2,598	3,194	4.9	8.7

Assay Class: Prokaryote Total RNA Nano
Data Path: C:\...ents and Settings\Bioanalyzer\2016-01-19\2016-01-19_001.xad

Created: 1/19/2016 12:49:41 PM
Modified: 1/19/2016 1:13:30 PM

Electropherogram Summary Continued ...

Sample 9: 4016.T1.D0 [QC_060]



Overall Results for sample 9 : Sample 9: 4016.T1.D0

RNA Area: 870.7 rRNA Ratio [23s / 16s]: 1.3
RNA Concentration: 758 ng/μl RNA Integrity Number (RIN): 9.1 (B.02.08)

Fragment table for sample 9 : Sample 9: 4016.T1.D0

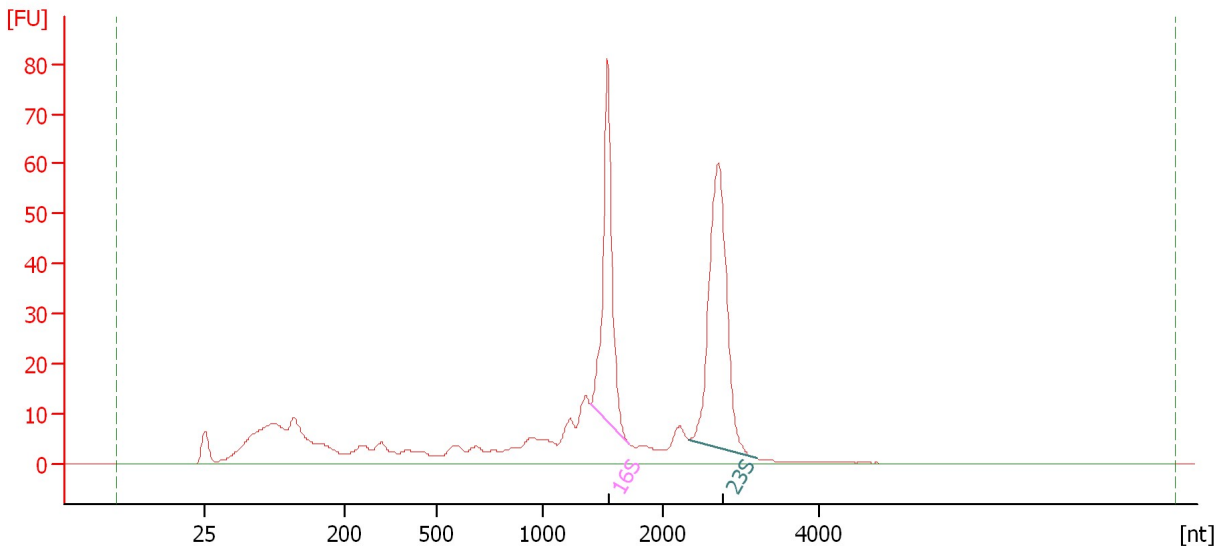
Name	Start Size [nt]	End Size [nt]	Area	% of total Area
16S	1,394	1,769	221.3	25.4
23S	2,422	3,128	290.8	33.4

Assay Class: Prokaryote Total RNA Nano
Data Path: C:\...ents and Settings\Bioanalyzer\2016-01-19\2016-01-19_001.xad

Created: 1/19/2016 12:49:41 PM
Modified: 1/19/2016 1:13:30 PM

Electropherogram Summary Continued ...

Sample 10: 4001.T2.D0 [QC_060]



Overall Results for sample 10 : Sample 10: 4001.T2.D0

RNA Area: 511.5 rRNA Ratio [23s / 16s]: 1.4
RNA Concentration: 445 ng/μl RNA Integrity Number (RIN): 7.8 (B.02.08)

Fragment table for sample 10 : Sample 10: 4001.T2.D0

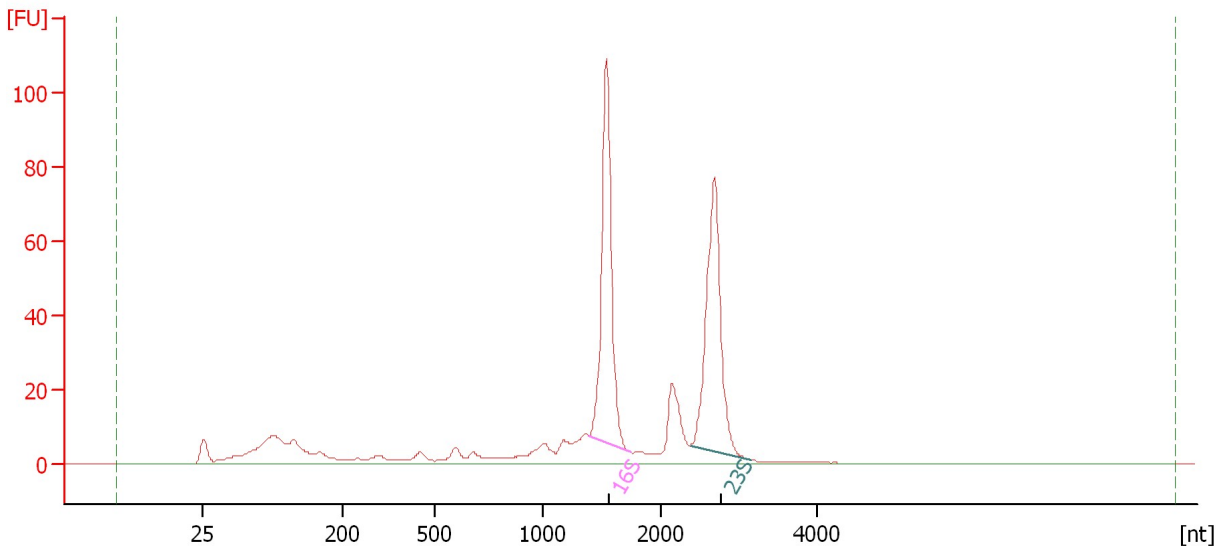
Name	Start Size [nt]	End Size [nt]	Area	% of total Area
16S	1,390	1,712	83.1	16.3
23S	2,325	3,184	114.6	22.4

Assay Class: Prokaryote Total RNA Nano
Data Path: C:\...ents and Settings\Bioanalyzer\2016-01-19\2016-01-19_001.xad

Created: 1/19/2016 12:49:41 PM
Modified: 1/19/2016 1:13:30 PM

Electropherogram Summary Continued ...

Sample 11: 4003.T2.D0 [QC_060]



Overall Results for sample 11 : Sample 11: 4003.T2.D0

RNA Area: 502.5 rRNA Ratio [23s / 16s]: 0.9
RNA Concentration: 437 ng/μl RNA Integrity Number (RIN): 8.8 (B.02.08)

Fragment table for sample 11 : Sample 11: 4003.T2.D0

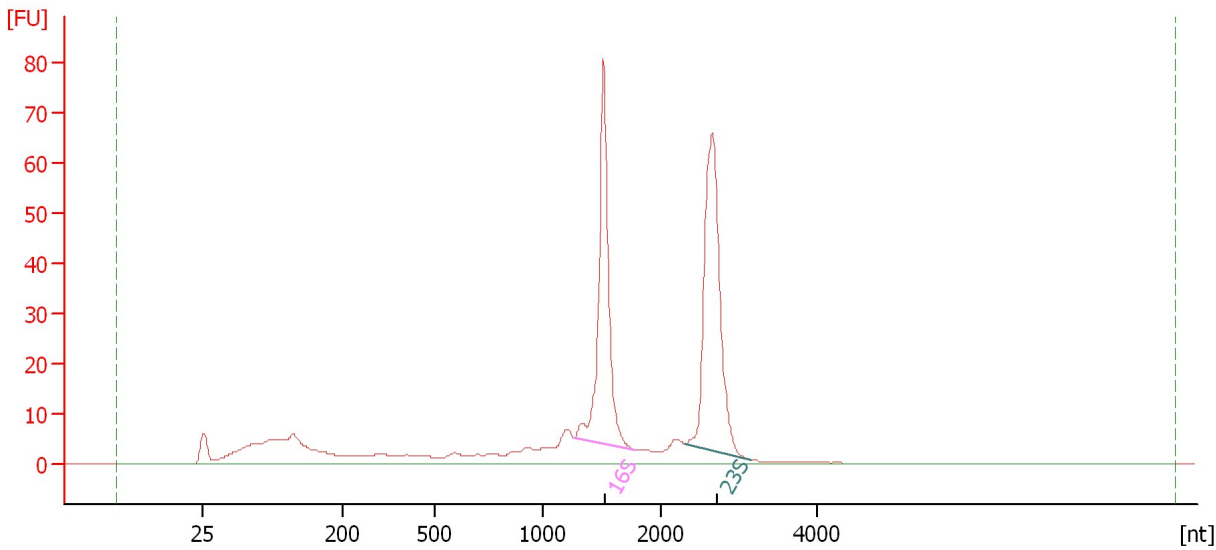
Name	Start Size [nt]	End Size [nt]	Area	% of total Area
16S	1,397	1,747	131.6	26.2
23S	2,380	3,145	119.8	23.8

Assay Class: Prokaryote Total RNA Nano
Data Path: C:\...ents and Settings\Bioanalyzer\2016-01-19\2016-01-19_001.xad

Created: 1/19/2016 12:49:41 PM
Modified: 1/19/2016 1:13:30 PM

Electropherogram Summary Continued ...

Sample 12: 4005.T2.D0 [QC_060]



Overall Results for sample 12 : Sample 12: 4005.T2.D0

RNA Area: 414.5 rRNA Ratio [23s / 16s]: 1.2
RNA Concentration: 361 ng/μl RNA Integrity Number (RIN): 8.8 (B.02.08)

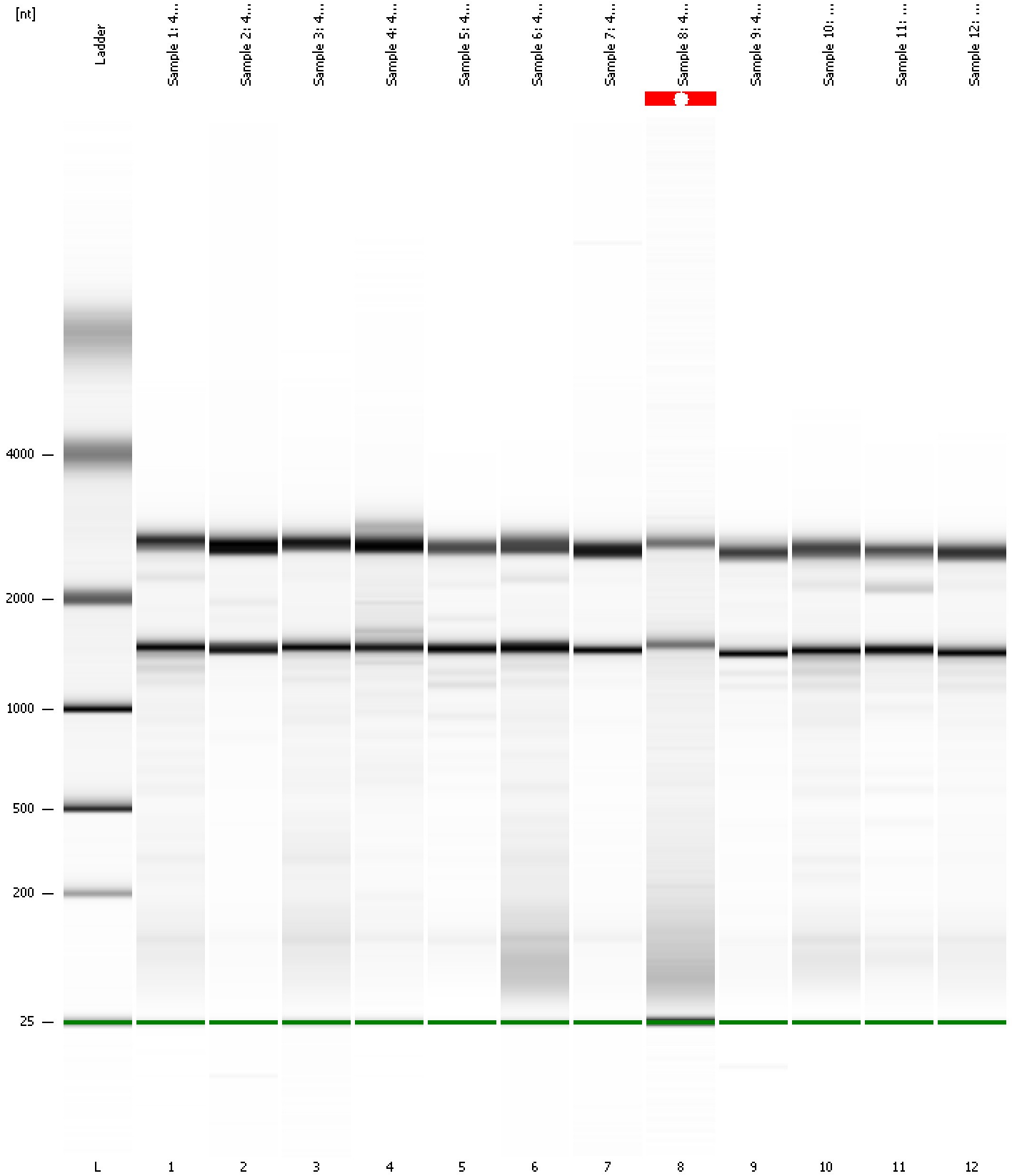
Fragment table for sample 12 : Sample 12: 4005.T2.D0

Name	Start Size [nt]	End Size [nt]	Area	% of total Area
16S	1,272	1,774	95.7	23.1
23S	2,311	3,145	112.3	27.1

Assay Class: Prokaryote Total RNA Nano
Data Path: C:\...ents and Settings\Bioanalyzer\2016-01-19\2016-01-19_001.xad

Created: 1/19/2016 12:49:41 PM
Modified: 1/19/2016 1:13:30 PM

Gel Image



Assay Class: Prokaryote Total RNA Nano
 Data Path: C:\...ents and Settings\Bioanalyzer\2016-01-19\2016-01-19_001.xad

Created: 1/19/2016 12:49:41 PM
 Modified: 1/19/2016 1:13:30 PM

Run Logbook

Description	Number	Source	Category	Sub Category	Time	Time Zone	User	Host
Run ended on port 1 (Number of wells acquired: 13)		Instrument	Run		1/19/2016 1:13:29 PM	(GMT --08:00) Pacific Standard Time	UC Davis	D8XSMGH1
Run started on port 1 (File: C:\Documents and Settings\Bioanalyzer\2016-01-19\2016-01-19_001.xad)		Instrument	Run		1/19/2016 12:49:46 PM	(GMT --08:00) Pacific Standard Time	UC Davis	D8XSMGH1
Product Number : G2938B		Instrument	Run		1/19/2016 12:49:46 PM	(GMT --08:00) Pacific Standard Time	UC Davis	D8XSMGH1
Name :		Instrument	Run		1/19/2016 12:49:46 PM	(GMT --08:00) Pacific Standard Time	UC Davis	D8XSMGH1
Vendor : Agilent Technologies		Instrument	Run		1/19/2016 12:49:46 PM	(GMT --08:00) Pacific Standard Time	UC Davis	D8XSMGH1
Serial# : DE13701086		Instrument	Run		1/19/2016 12:49:46 PM	(GMT --08:00) Pacific Standard Time	UC Davis	D8XSMGH1
Firmware : C.01.069		Instrument	Run		1/19/2016 12:49:46 PM	(GMT --08:00) Pacific Standard Time	UC Davis	D8XSMGH1
Cartridge : Electrode		Instrument	Run		1/19/2016 12:49:46 PM	(GMT --08:00) Pacific Standard Time	UC Davis	D8XSMGH1