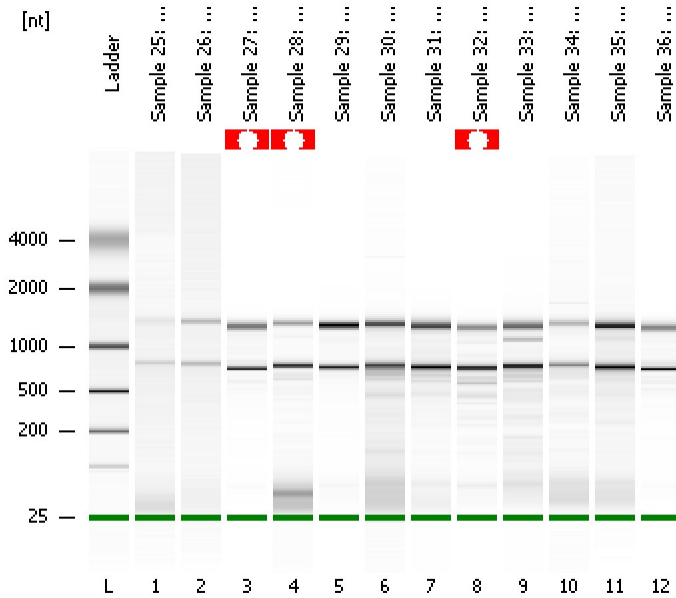


Assay Class: Prokaryote Total RNA Nano
Data Path: C:\...ents and Settings\Bioanalyzer\2016-01-19\2016-01-19_002.xad

Created: 1/19/2016 1:21:05 PM
Modified: 1/19/2016 1:44:11 PM

Electrophoresis File Run Summary



Instrument Information:

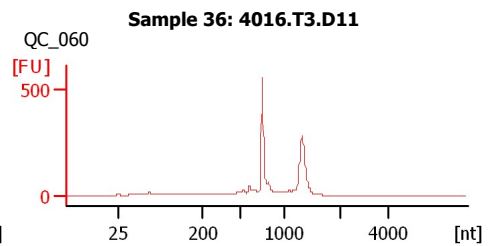
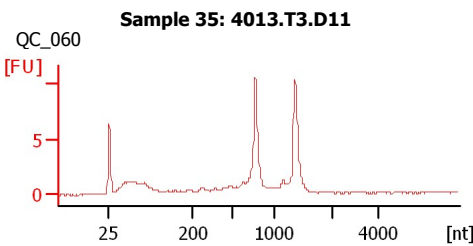
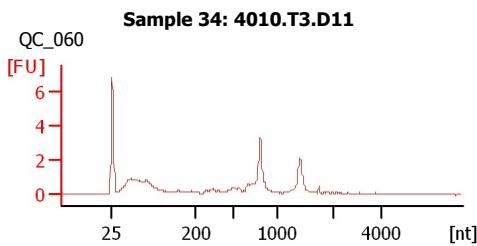
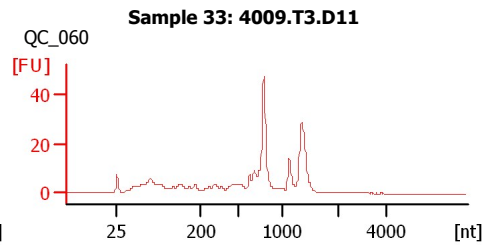
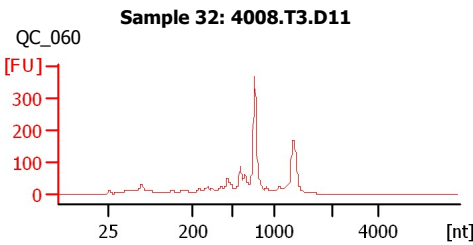
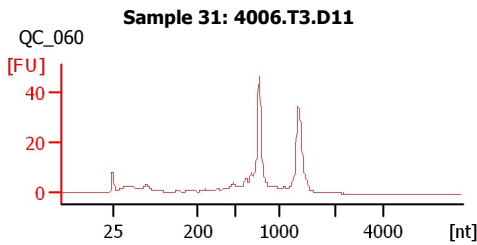
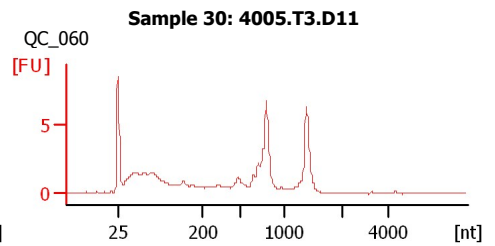
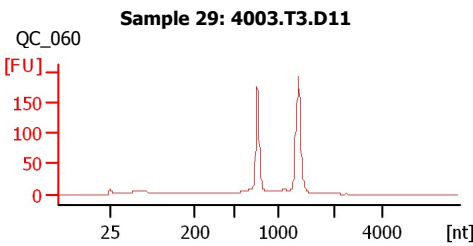
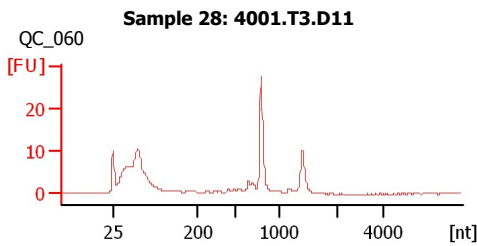
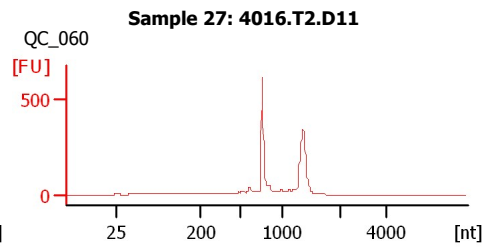
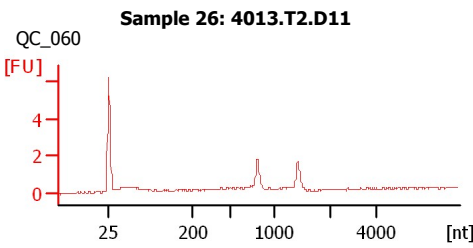
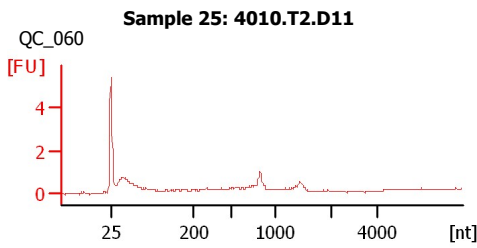
Instrument Name: DE13701086 Firmware: C.01.069
Serial#: DE13701086 Type: G2938B

Assay Information:

Assay Origin Path: C:\Program Files\Agilent\2100 bioanalyzer\2100 expert\assays\RNA\Prokaryote Total RNA Nano Series II.xsy
Assay Class: Prokaryote Total RNA Nano
Version: 2.5
Assay Comments: Total RNA Analysis ng sensitivity (Prokaryote)
© Copyright 2003 - 2009 Agilent Technologies, Inc.

Chip Information:

Chip Lot #:
Reagent Kit Lot #:
Chip Comments:



Assay Class: Prokaryote Total RNA Nano
Data Path: C:\...ents and Settings\Bioanalyzer\2016-01-19\2016-01-19_002.xad

Created: 1/19/2016 1:21:05 PM
Modified: 1/19/2016 1:44:11 PM

Electrophoresis File Run Summary (Chip Summary)

Sample Name	Sample Comment	Status	Result Label	Result Color
Sample 25: 4010.T2.D11	QC_060	✓		
Sample 26: 4013.T2.D11	QC_060	✓		
Sample 27: 4016.T2.D11	QC_060	✓		
Sample 28: 4001.T3.D11	QC_060	✓		
Sample 29: 4003.T3.D11	QC_060	✓		
Sample 30: 4005.T3.D11	QC_060	✓		
Sample 31: 4006.T3.D11	QC_060	✓		
Sample 32: 4008.T3.D11	QC_060	✓		
Sample 33: 4009.T3.D11	QC_060	✓		
Sample 34: 4010.T3.D11	QC_060	✓		
Sample 35: 4013.T3.D11	QC_060	✓		
Sample 36: 4016.T3.D11	QC_060	✓		
Ladder		✓		

Chip Lot #**Reagent Kit Lot #****Chip Comments :**

Assay Class: Prokaryote Total RNA Nano
Data Path: C:\...ents and Settings\Bioanalyzer\2016-01-19\2016-01-19_002.xad

Created: 1/19/2016 1:21:05 PM
Modified: 1/19/2016 1:44:11 PM

Electrophoresis Assay Details

General Analysis Settings

Number of Available Sample and Ladder Wells (Max.) : 13
Minimum Visible Range [s] : 17
Maximum Visible Range [s] : 70
Start Analysis Time Range [s] : 19
End Analysis Time Range [s] : 69
Ladder Concentration [ng/μl] : 150
Lower Marker Concentration [ng/μl] : 0
Upper Marker Concentration [ng/μl] : 0
Used Lower Marker for Quantitation
Standard Curve Fit is Logarithmic
Show Data Aligned to Lower Marker

Integrator Settings

Integration Start Time [s] : 19
Integration End Time [s] : 69
Slope Threshold : 0.6
Height Threshold [FU] : 0.5
Area Threshold : 0.2
Width Threshold [s] : 0.5
Baseline Plateau [s] : 6

Filter Settings

Filter Width [s] : 0.5
Polynomial Order : 4

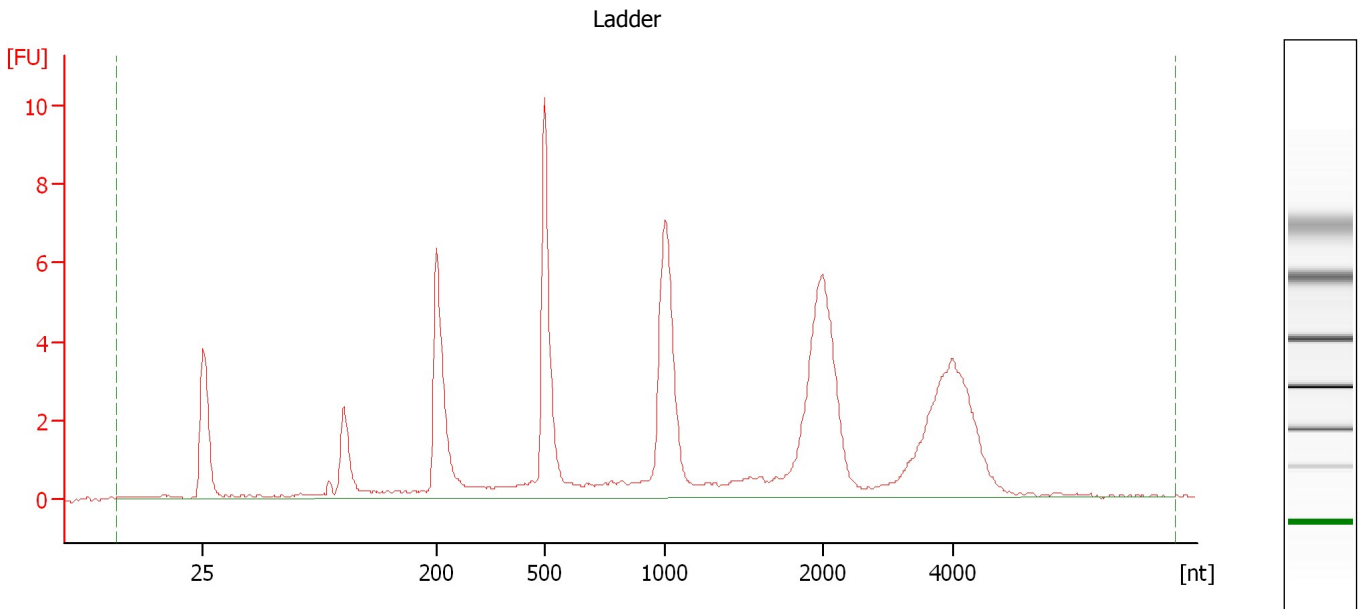
Ladder

Ladder Peak	Size
1	25
2	200
3	500
4	1000
5	2000
6	4000

Assay Class: Prokaryote Total RNA Nano
Data Path: C:\...ents and Settings\Bioanalyzer\2016-01-19\2016-01-19_002.xad

Created: 1/19/2016 1:21:05 PM
Modified: 1/19/2016 1:44:11 PM

Electropherogram Summary



Overall Results for Ladder

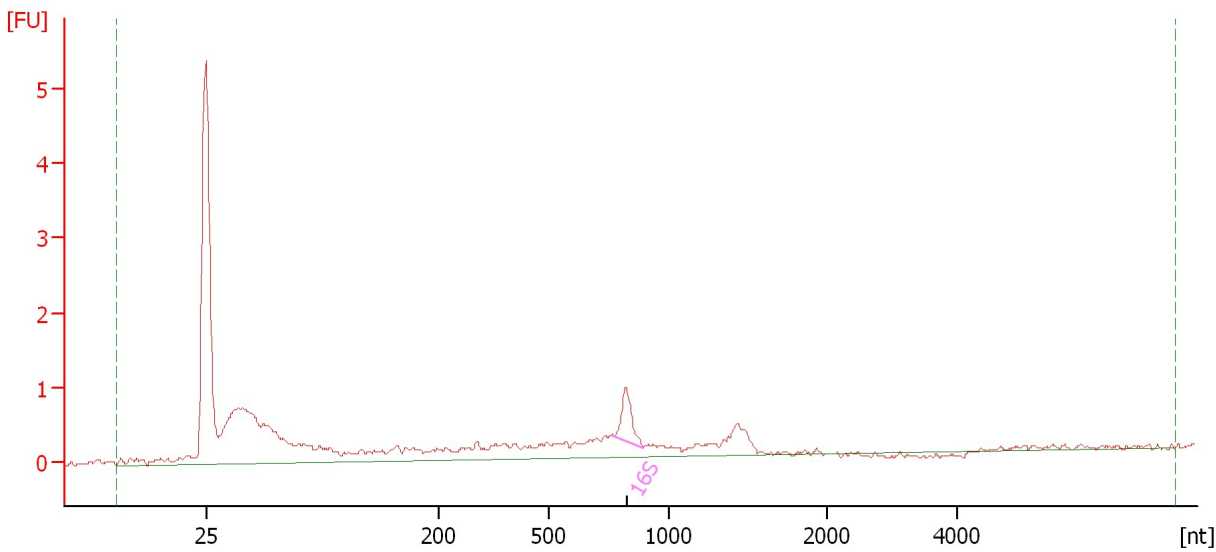
RNA Area: 83.1 RNA Concentration: 150 ng/μl

Assay Class: Prokaryote Total RNA Nano
Data Path: C:\...ents and Settings\Bioanalyzer\2016-01-19\2016-01-19_002.xad

Created: 1/19/2016 1:21:05 PM
Modified: 1/19/2016 1:44:11 PM

Electropherogram Summary Continued ...

Sample 25: 4010.T2.D11 [QC_060]



Overall Results for sample 1 : Sample 25: 4010.T2.D11

RNA Area: 19.7 rRNA Ratio [23s / 16s]: 0.0
RNA Concentration: 36 ng/μl RNA Integrity Number (RIN): 4.9 (B.02.08)

Fragment table for sample 1 : Sample 25: 4010.T2.D11

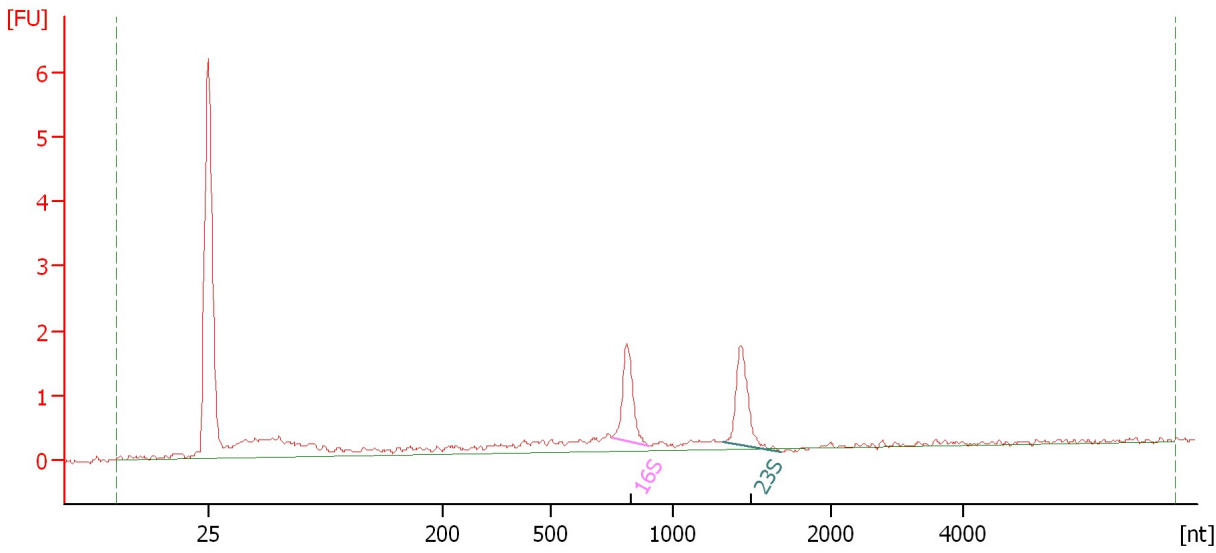
Name	Start Size [nt]	End Size [nt]	Area	% of total Area
16S	771	894	0.9	4.3

Assay Class: Prokaryote Total RNA Nano
Data Path: C:\...ents and Settings\Bioanalyzer\2016-01-19\2016-01-19_002.xad

Created: 1/19/2016 1:21:05 PM
Modified: 1/19/2016 1:44:11 PM

Electropherogram Summary Continued ...

Sample 26: 4013.T2.D11 [QC_060]



Overall Results for sample 2 : Sample 26: 4013.T2.D11

RNA Area: 15.1 rRNA Ratio [23s / 16s]: 1.1
RNA Concentration: 27 ng/μl RNA Integrity Number (RIN): 8.3 (B.02.08)

Fragment table for sample 2 : Sample 26: 4013.T2.D11

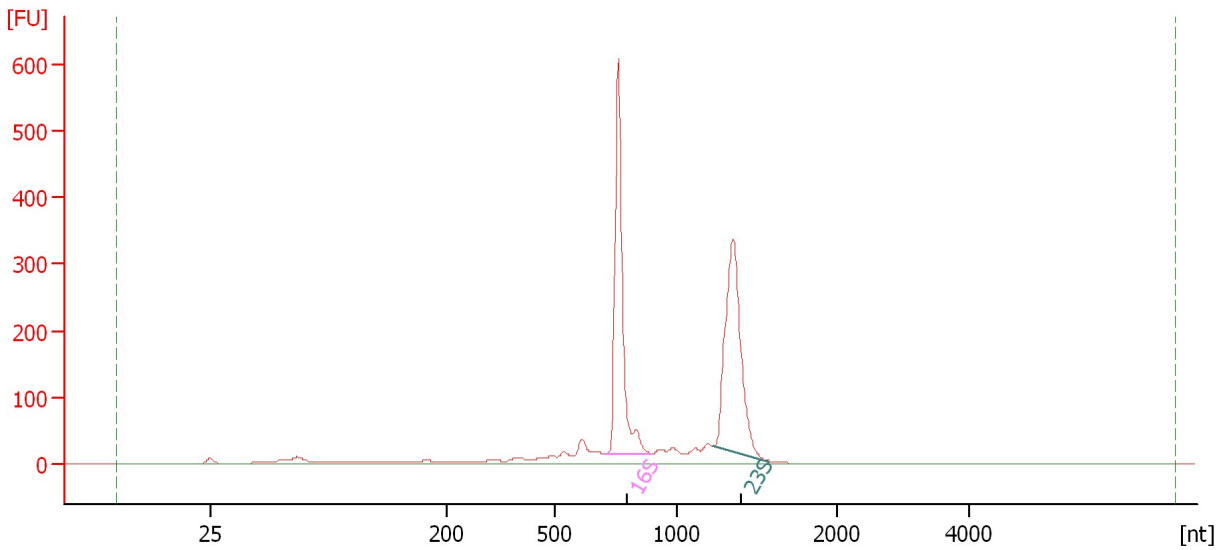
Name	Start Size [nt]	End Size [nt]	Area	% of total Area
16S	751	900	1.9	12.7
23S	1,312	1,683	2.1	13.7

Assay Class: Prokaryote Total RNA Nano
Data Path: C:\...ents and Settings\Bioanalyzer\2016-01-19\2016-01-19_002.xad

Created: 1/19/2016 1:21:05 PM
Modified: 1/19/2016 1:44:11 PM

Electropherogram Summary Continued ...

Sample 27: 4016.T2.D11 [QC_060]



Overall Results for sample 3 : Sample 27: 4016.T2.D11

RNA Area: 1,685.3 rRNA Ratio [23s / 16s]: 1.0
RNA Concentration: 3,042 ng/μl RNA Integrity Number (RIN): N/A (B.02.08)

Fragment table for sample 3 : Sample 27: 4016.T2.D11

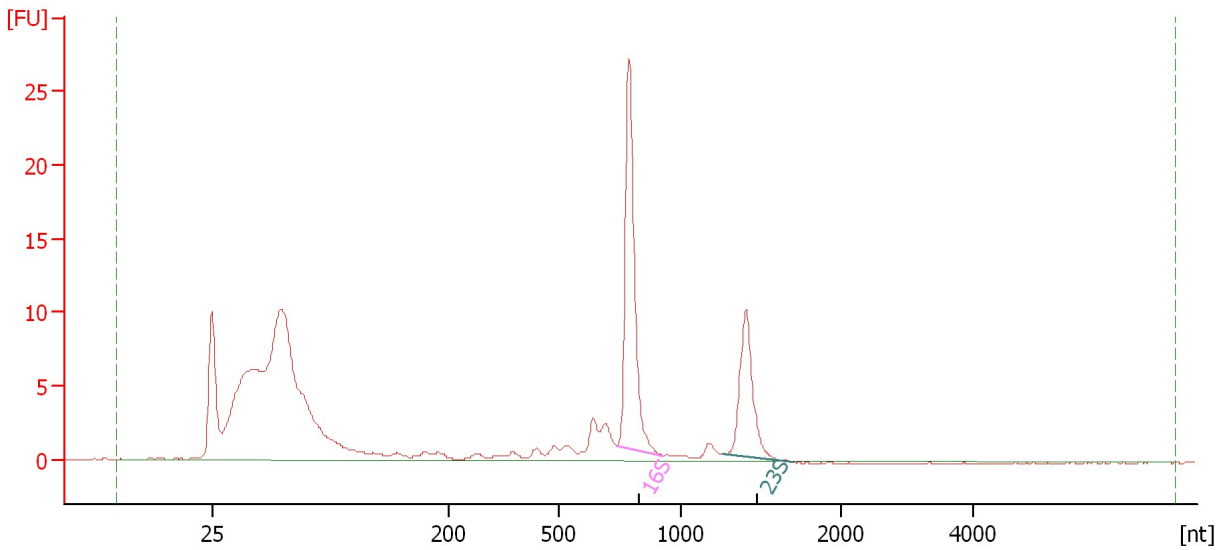
Name	Start Size [nt]	End Size [nt]	Area	% of total Area
16S	705	892	550.4	32.7
23S	1,225	1,581	556.4	33.0

Assay Class: Prokaryote Total RNA Nano
Data Path: C:\...ents and Settings\Bioanalyzer\2016-01-19\2016-01-19_002.xad

Created: 1/19/2016 1:21:05 PM
Modified: 1/19/2016 1:44:11 PM

Electropherogram Summary Continued ...

Sample 28: 4001.T3.D11 [QC_060]



Overall Results for sample 4 : Sample 28: 4001.T3.D11

RNA Area: 175.7 rRNA Ratio [23s / 16s]: 0.5
RNA Concentration: 317 ng/μl RNA Integrity Number (RIN): N/A (B.02.08)

Fragment table for sample 4 : Sample 28: 4001.T3.D11

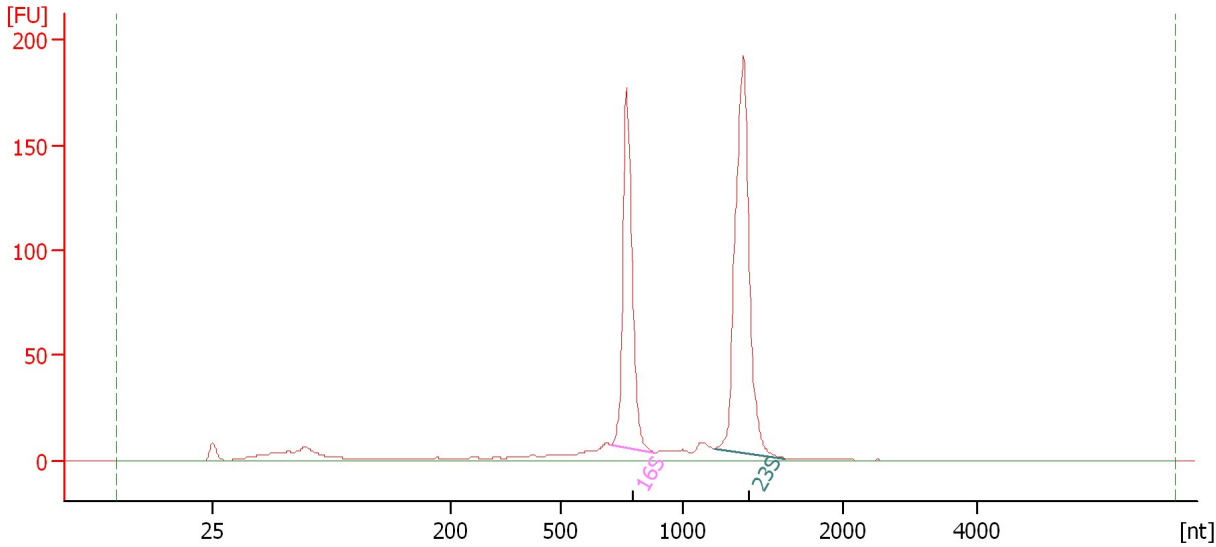
Name	Start Size [nt]	End Size [nt]	Area	% of total Area
16S	737	924	28.8	16.4
23S	1,258	1,700	14.3	8.1

Assay Class: Prokaryote Total RNA Nano
Data Path: C:\...ents and Settings\Bioanalyzer\2016-01-19\2016-01-19_002.xad

Created: 1/19/2016 1:21:05 PM
Modified: 1/19/2016 1:44:11 PM

Electropherogram Summary Continued ...

Sample 29: 4003.T3.D11 [QC_060]



Overall Results for sample 5 : Sample 29: 4003.T3.D11

RNA Area: 702.2 rRNA Ratio [23s / 16s]: 1.5
RNA Concentration: 1,267 ng/μl RNA Integrity Number (RIN): 9.8 (B.02.08)

Fragment table for sample 5 : Sample 29: 4003.T3.D11

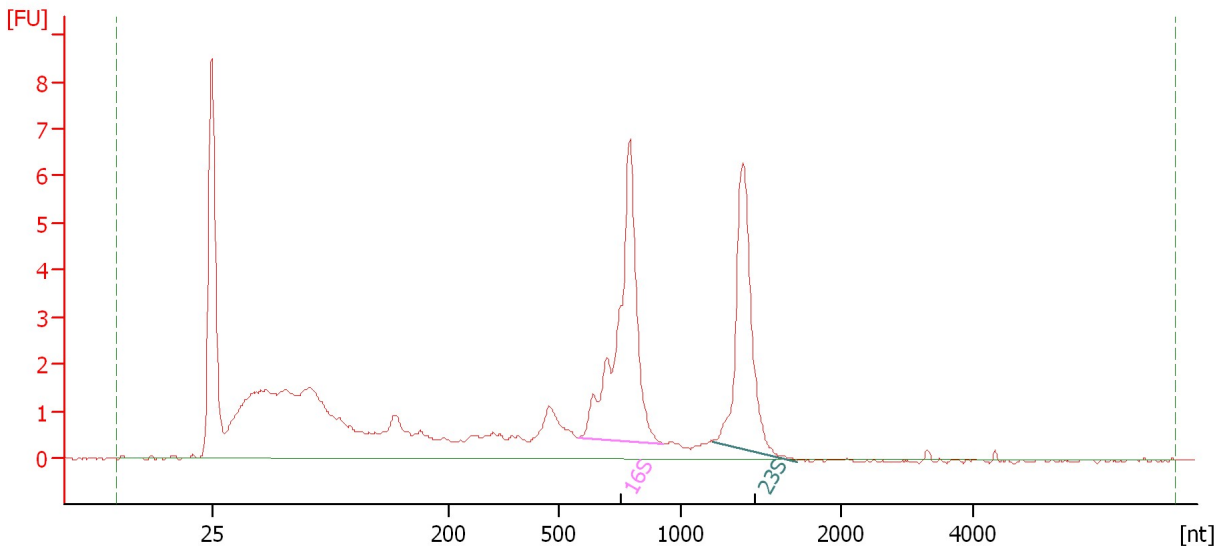
Name	Start Size [nt]	End Size [nt]	Area	% of total Area
16S	707	881	191.8	27.3
23S	1,191	1,639	288.3	41.1

Assay Class: Prokaryote Total RNA Nano
Data Path: C:\...ents and Settings\Bioanalyzer\2016-01-19\2016-01-19_002.xad

Created: 1/19/2016 1:21:05 PM
Modified: 1/19/2016 1:44:11 PM

Electropherogram Summary Continued ...

Sample 30: 4005.T3.D11 [QC_060]



Overall Results for sample 6 : Sample 30: 4005.T3.D11

RNA Area: 73.4 rRNA Ratio [23s / 16s]: 0.7
RNA Concentration: 133 ng/μl RNA Integrity Number (RIN): 8.3 (B.02.08)

Fragment table for sample 6 : Sample 30: 4005.T3.D11

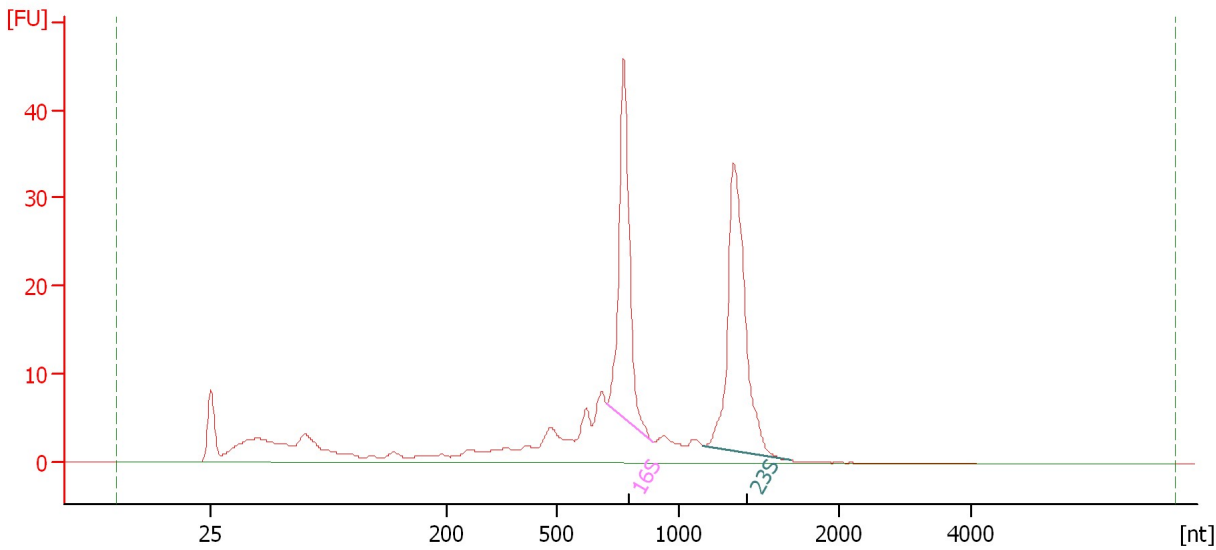
Name	Start Size [nt]	End Size [nt]	Area	% of total Area
16S	580	924	14.7	20.1
23S	1,191	1,720	10.1	13.8

Assay Class: Prokaryote Total RNA Nano
Data Path: C:\...ents and Settings\Bioanalyzer\2016-01-19\2016-01-19_002.xad

Created: 1/19/2016 1:21:05 PM
Modified: 1/19/2016 1:44:11 PM

Electropherogram Summary Continued ...

Sample 31: 4006.T3.D11 [QC_060]



Overall Results for sample 7 : Sample 31: 4006.T3.D11

RNA Area: 263.6 rRNA Ratio [23s / 16s]: 1.2
RNA Concentration: 476 ng/μl RNA Integrity Number (RIN): 8.1 (B.02.08)

Fragment table for sample 7 : Sample 31: 4006.T3.D11

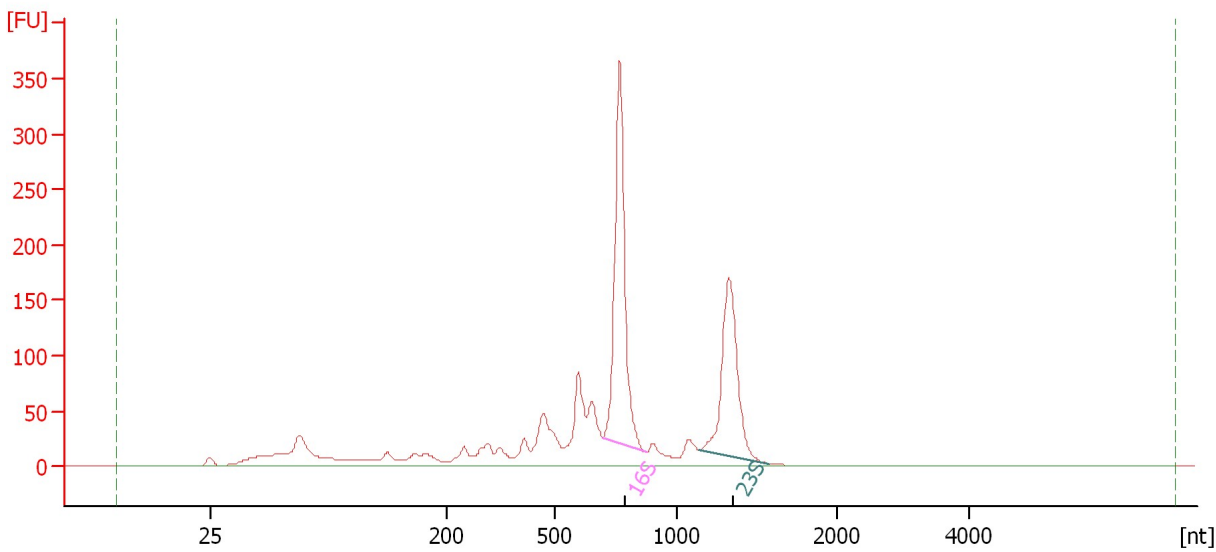
Name	Start Size [nt]	End Size [nt]	Area	% of total Area
16S	706	889	52.7	20.0
23S	1,151	1,694	64.0	24.3

Assay Class: Prokaryote Total RNA Nano
Data Path: C:\...ents and Settings\Bioanalyzer\2016-01-19\2016-01-19_002.xad

Created: 1/19/2016 1:21:05 PM
Modified: 1/19/2016 1:44:11 PM

Electropherogram Summary Continued ...

Sample 32: 4008.T3.D11 [QC_060]



Overall Results for sample 8 : Sample 32: 4008.T3.D11

RNA Area: 1,693.7 rRNA Ratio [23s / 16s]: 0.7
RNA Concentration: 3,057 ng/μl RNA Integrity Number (RIN): N/A (B.02.08)

Fragment table for sample 8 : Sample 32: 4008.T3.D11

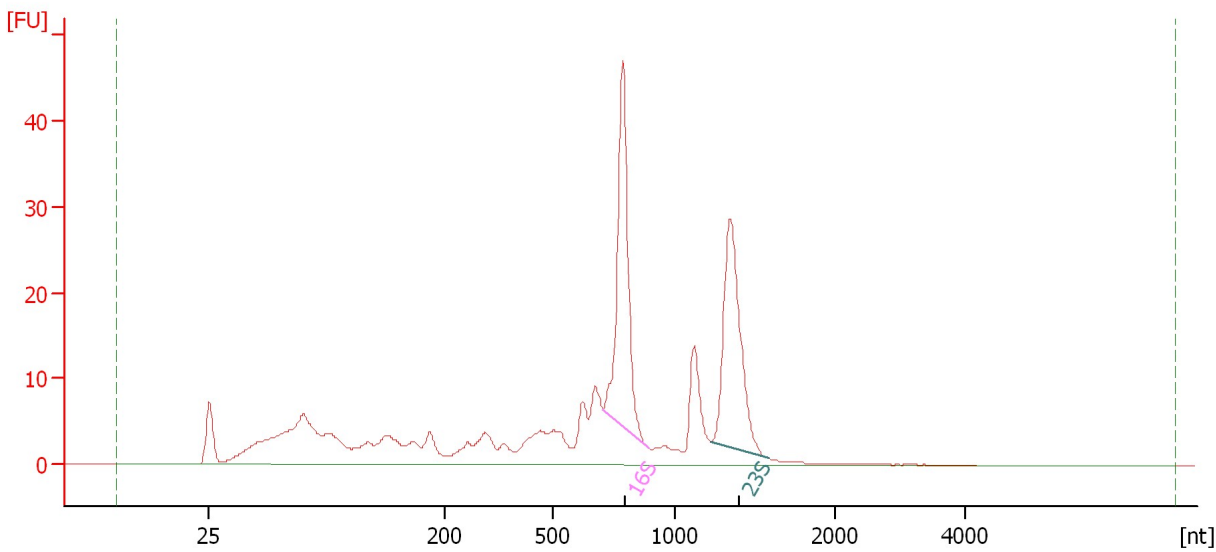
Name	Start Size [nt]	End Size [nt]	Area	% of total Area
16S	696	871	426.2	25.2
23S	1,137	1,574	279.8	16.5

Assay Class: Prokaryote Total RNA Nano
Data Path: C:\...ents and Settings\Bioanalyzer\2016-01-19\2016-01-19_002.xad

Created: 1/19/2016 1:21:05 PM
Modified: 1/19/2016 1:44:11 PM

Electropherogram Summary Continued ...

Sample 33: 4009.T3.D11 [QC_060]



Overall Results for sample 9 : Sample 33: 4009.T3.D11

RNA Area: 319.3 rRNA Ratio [23s / 16s]: 0.9
RNA Concentration: 576 ng/μl RNA Integrity Number (RIN): 7.2 (B.02.08)

Fragment table for sample 9 : Sample 33: 4009.T3.D11

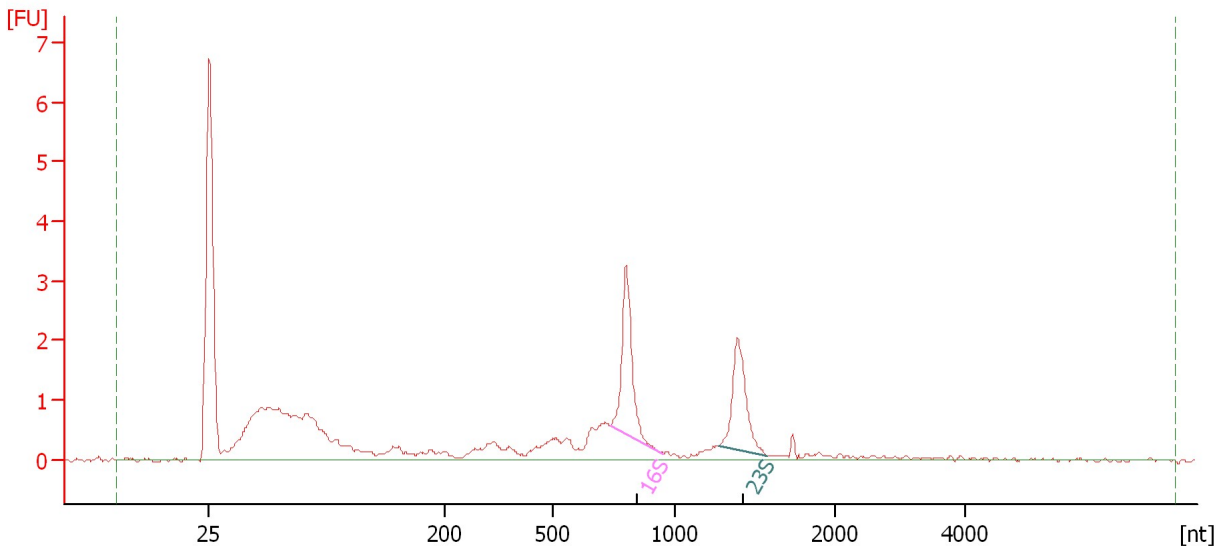
Name	Start Size [nt]	End Size [nt]	Area	% of total Area
16S	704	887	56.4	17.7
23S	1,224	1,595	49.4	15.5

Assay Class: Prokaryote Total RNA Nano
Data Path: C:\...ents and Settings\Bioanalyzer\2016-01-19\2016-01-19_002.xad

Created: 1/19/2016 1:21:05 PM
Modified: 1/19/2016 1:44:11 PM

Electropherogram Summary Continued ...

Sample 34: 4010.T3.D11 [QC_060]



Overall Results for sample 10 : Sample 34: 4010.T3.D11

RNA Area: 30.6 rRNA Ratio [23s / 16s]: 0.8
RNA Concentration: 55 ng/μl RNA Integrity Number (RIN): 7.7 (B.02.08)

Fragment table for sample 10 : Sample 34: 4010.T3.D11

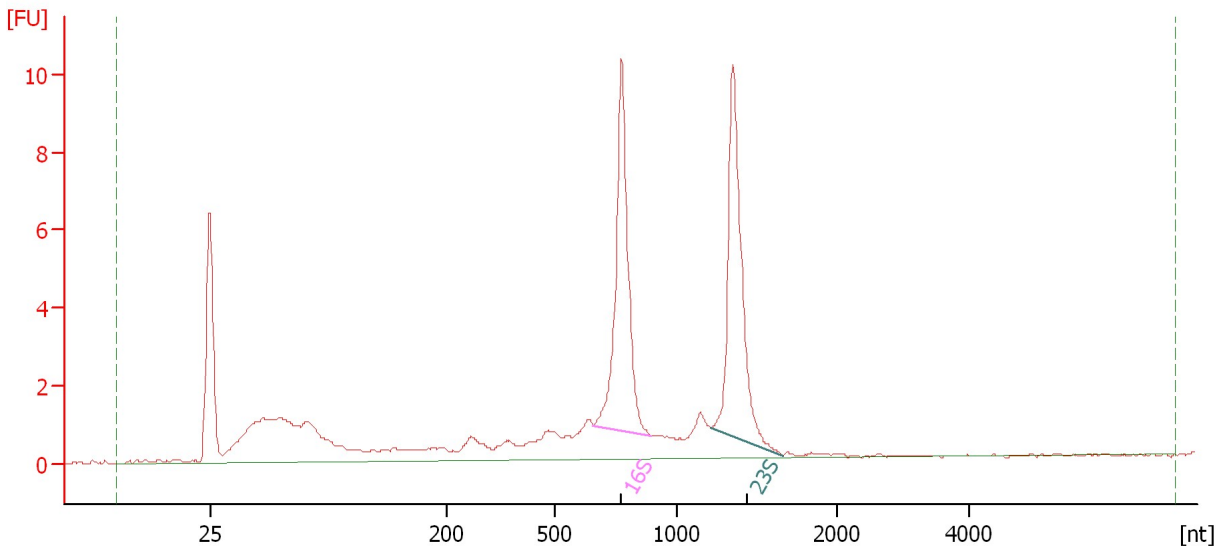
Name	Start Size [nt]	End Size [nt]	Area	% of total Area
16S	734	949	3.4	11.3
23S	1,278	1,581	2.8	9.2

Assay Class: Prokaryote Total RNA Nano
Data Path: C:\...ents and Settings\Bioanalyzer\2016-01-19\2016-01-19_002.xad

Created: 1/19/2016 1:21:05 PM
Modified: 1/19/2016 1:44:11 PM

Electropherogram Summary Continued ...

Sample 35: 4013.T3.D11 [QC_060]



Overall Results for sample 11 : Sample 35: 4013.T3.D11

RNA Area: 73.2 rRNA Ratio [23s / 16s]: 1.0
RNA Concentration: 132 ng/μl RNA Integrity Number (RIN): 8.5 (B.02.08)

Fragment table for sample 11 : Sample 35: 4013.T3.D11

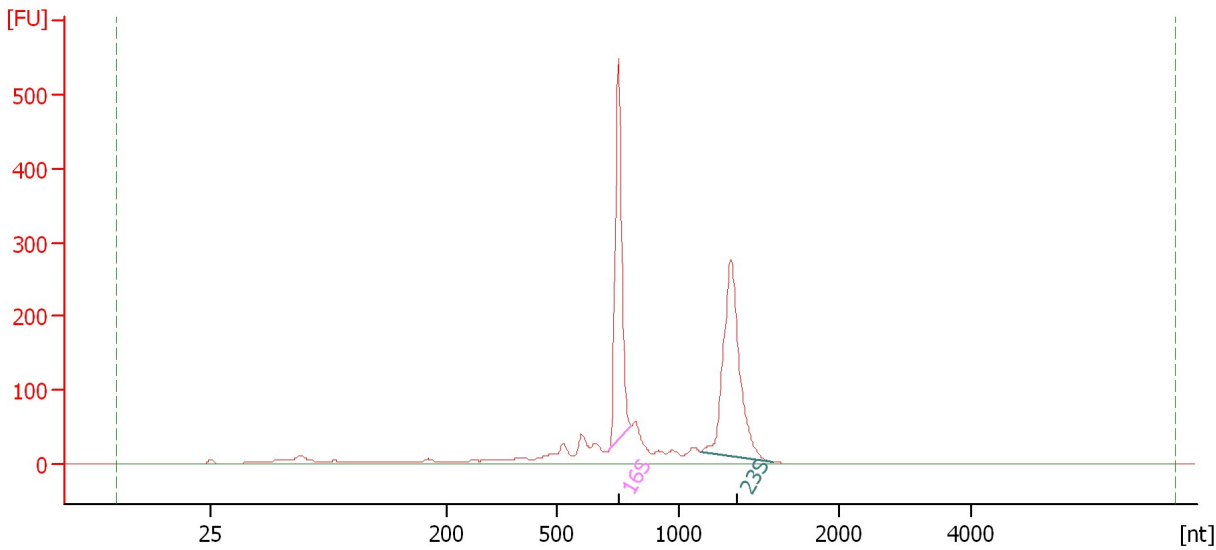
Name	Start Size [nt]	End Size [nt]	Area	% of total Area
16S	657	892	14.4	19.6
23S	1,211	1,661	14.3	19.6

Assay Class: Prokaryote Total RNA Nano
Data Path: C:\...ents and Settings\Bioanalyzer\2016-01-19\2016-01-19_002.xad

Created: 1/19/2016 1:21:05 PM
Modified: 1/19/2016 1:44:11 PM

Electropherogram Summary Continued ...

Sample 36: 4016.T3.D11 [QC_060]



Overall Results for sample 12 : Sample 36: 4016.T3.D11

RNA Area: 1,588.1 rRNA Ratio [23s / 16s]: 1.1
RNA Concentration: 2,866 ng/μl RNA Integrity Number (RIN): 8.9 (B.02.08)

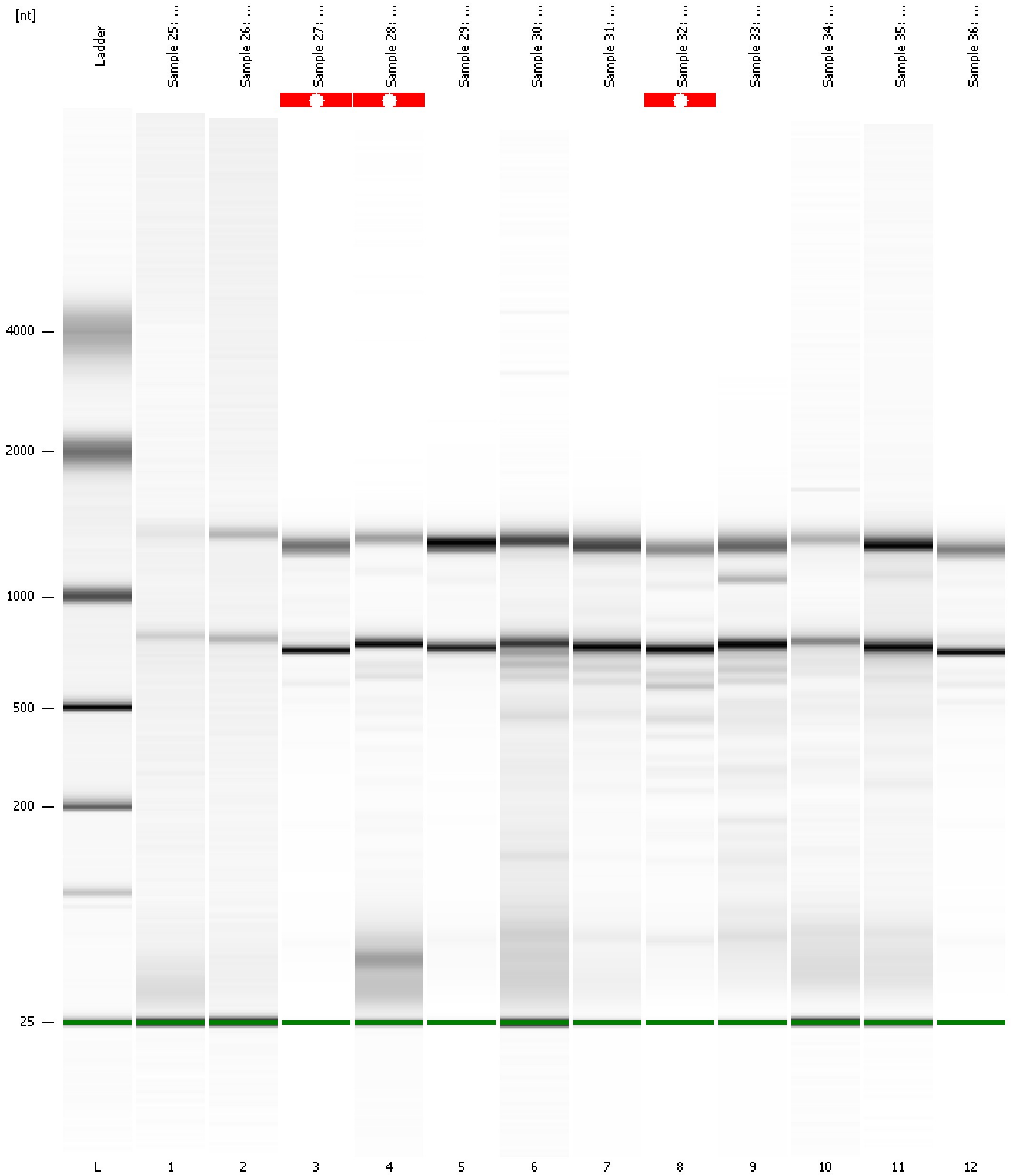
Fragment table for sample 12 : Sample 36: 4016.T3.D11

Name	Start Size [nt]	End Size [nt]	Area	% of total Area
16S	714	801	418.7	26.4
23S	1,131	1,587	478.9	30.2

Assay Class: Prokaryote Total RNA Nano
Data Path: C:\...ents and Settings\Bioanalyzer\2016-01-19\2016-01-19_002.xad

Created: 1/19/2016 1:21:05 PM
Modified: 1/19/2016 1:44:11 PM

Gel Image



Assay Class: Prokaryote Total RNA Nano Created: 1/19/2016 1:21:05 PM
 Data Path: C:\...ents and Settings\Bioanalyzer\2016-01-19\2016-01-19_002.xad Modified: 1/19/2016 1:44:11 PM

Run Logbook

Description	Number	Source	Category	Sub Category	Time	Time Zone	User	Host
Run ended on port 1 (Number of wells acquired: 13)		Instrument	Run		1/19/2016 1:44:09 PM	(GMT --08:00) Pacific Standard Time	UC Davis	D8XSMGH1
Run started on port 1 (File: C:\Documents and Settings\Bioanalyzer\2016-01-19\2016-01-19_002.xad)		Instrument	Run		1/19/2016 1:21:10 PM	(GMT --08:00) Pacific Standard Time	UC Davis	D8XSMGH1
Product Number : G2938B		Instrument	Run		1/19/2016 1:21:10 PM	(GMT --08:00) Pacific Standard Time	UC Davis	D8XSMGH1
Name :		Instrument	Run		1/19/2016 1:21:10 PM	(GMT --08:00) Pacific Standard Time	UC Davis	D8XSMGH1
Vendor : Agilent Technologies		Instrument	Run		1/19/2016 1:21:10 PM	(GMT --08:00) Pacific Standard Time	UC Davis	D8XSMGH1
Serial# : DE13701086		Instrument	Run		1/19/2016 1:21:10 PM	(GMT --08:00) Pacific Standard Time	UC Davis	D8XSMGH1
Firmware : C.01.069		Instrument	Run		1/19/2016 1:21:10 PM	(GMT --08:00) Pacific Standard Time	UC Davis	D8XSMGH1
Cartridge : Electrode		Instrument	Run		1/19/2016 1:21:10 PM	(GMT --08:00) Pacific Standard Time	UC Davis	D8XSMGH1