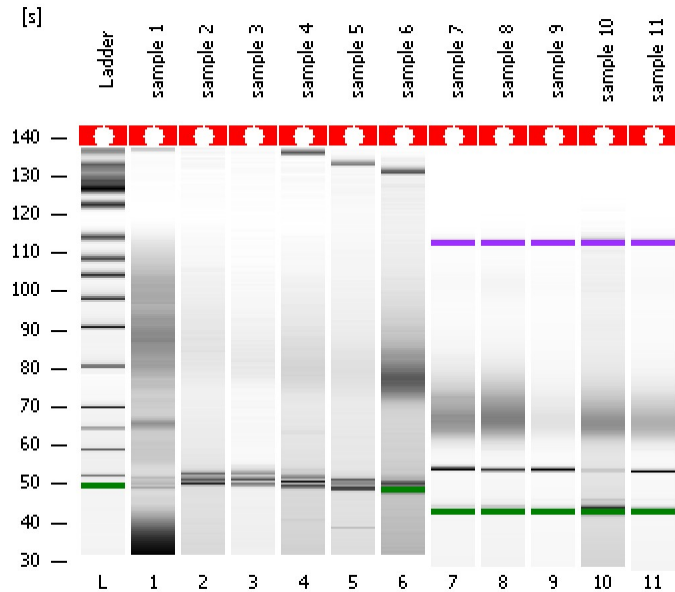


Assay Class: High Sensitivity DNA Assay  
Data Path: C:\...ents and Settings\Bioanalyzer\2016-02-05\2016-02-05\_002.xad

Created: 2/5/2016 3:55:13 PM  
Modified: 2/5/2016 4:36:32 PM

### Electrophoresis File Run Summary



#### Instrument Information:

Instrument Name: DE13701086      Firmware: C.01.069  
Serial#: DE13701086      Type: G2938B

#### Assay Information:

Assay Origin Path: C:\Program Files\Agilent\2100 bioanalyzer\2100 expert\assays\dsDNA\High Sensitivity DNA.xsy  
Assay Class: High Sensitivity DNA Assay  
Version: 1.03  
Assay Comments: Copyright © 2003-2010 Agilent Technologies

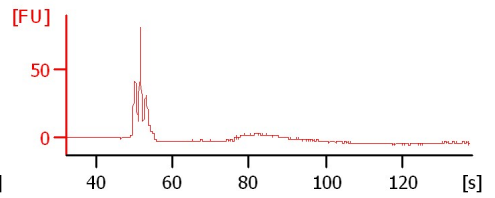
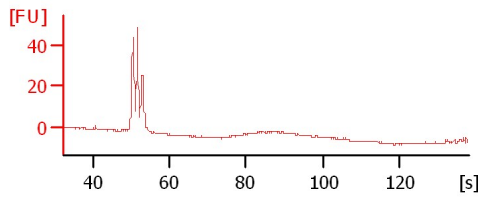
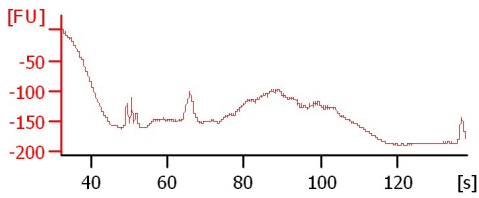
#### Chip Information:

Chip Lot #:      Reagent Kit Lot #:      Chip Comments:

sample 1

sample 2

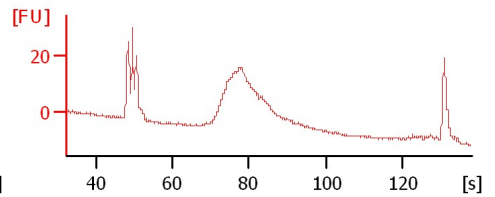
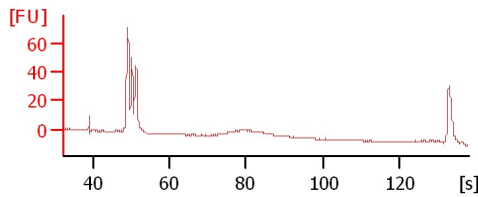
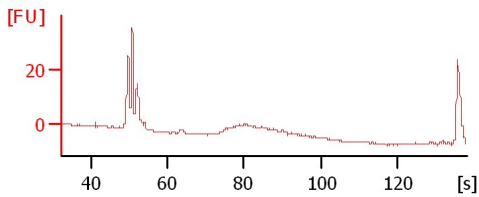
sample 3



sample 4

sample 5

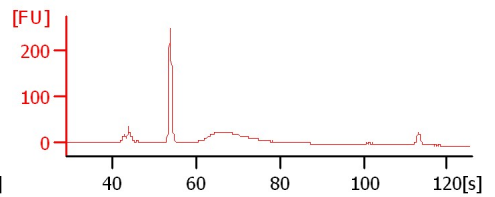
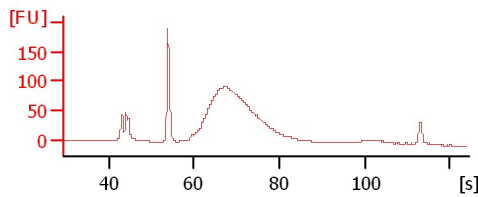
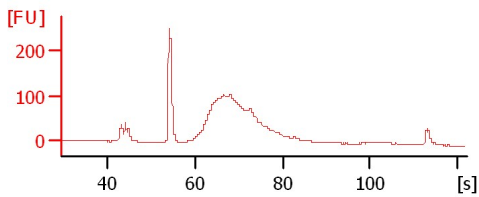
sample 6



sample 7

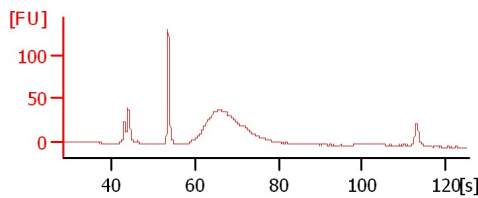
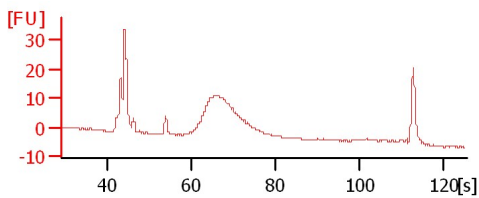
sample 8

sample 9



sample 10

sample 11



Assay Class: High Sensitivity DNA Assay  
 Data Path: C:\...ents and Settings\Bioanalyzer\2016-02-05\2016-02-05\_002.xad

Created: 2/5/2016 3:55:13 PM  
 Modified: 2/5/2016 4:36:32 PM

**Electrophoresis File Run Summary (Chip Summary)**

Sample Name	Sample Comment	Rest. Digest	Status	Observation	Result Label	Result Color
sample 1		<input type="checkbox"/>	✓			
sample 2		<input type="checkbox"/>	✓			
sample 3		<input type="checkbox"/>	✓			
sample 4		<input type="checkbox"/>	✓			
sample 5		<input type="checkbox"/>	✓			
sample 6		<input type="checkbox"/>	✓			
sample 7		<input type="checkbox"/>	✓			
sample 8		<input type="checkbox"/>	✓			
sample 9		<input type="checkbox"/>	✓			
sample 10		<input type="checkbox"/>	✓			
sample 11		<input type="checkbox"/>	✓			
Ladder		<input type="checkbox"/>	✓			

**Chip Lot #**

**Reagent Kit Lot #**

**Chip Comments :**

Assay Class: High Sensitivity DNA Assay  
 Data Path: C:\...ents and Settings\Bioanalyzer\2016-02-05\2016-02-05\_002.xad

Created: 2/5/2016 3:55:13 PM  
 Modified: 2/5/2016 4:36:32 PM

**Electrophoresis Assay Details**

**General Analysis Settings**

Number of Available Sample and Ladder Wells (Max.) : 12  
 Minimum Visible Range [s] : 32  
 Maximum Visible Range [s] : 138  
 Start Analysis Time Range [s] : 33  
 End Analysis Time Range [s] : 137.5  
 Ladder Concentration [pg/μl] : 1950  
 Uses Standard Area for Ladder Fragments  
 Lower Marker Concentration [pg/μl] : 125  
 Upper Marker Concentration [pg/μl] : 75  
 Used Upper Marker for Quantitation  
 Standard Curve Fit is Point to Point  
 Show Data Aligned to Lower and Upper Marker

**Integrator Settings**

Integration Start Time [s] : 33.05  
 Integration End Time [s] : 137  
 Slope Threshold : 0.8  
 Height Threshold [FU] : 5  
 Area Threshold : 0.1  
 Width Threshold [s] : 0.6  
 Baseline Plateau [s] : 0.5

**Filter Settings**

Filter Width [s] : 0.5  
 Polynomial Order : 4

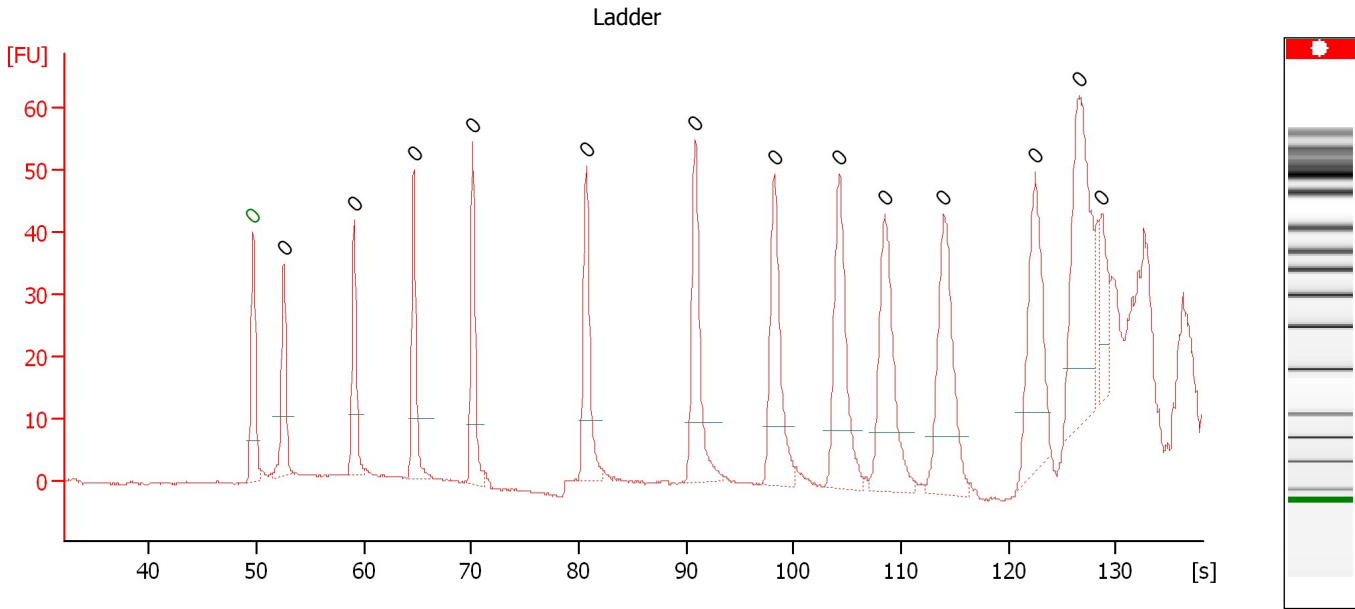
**Ladder**

Ladder Peak	Size	Area
1	35	160
2	50	210
3	100	208
4	150	221
5	200	242
6	300	270
7	400	305
8	500	306
9	600	336
10	700	321
11	1000	366
12	2000	413
13	3000	411
14	7000	400
15	10380	214

Assay Class: High Sensitivity DNA Assay  
 Data Path: C:\...ents and Settings\Bioanalyzer\2016-02-05\2016-02-05\_002.xad

Created: 2/5/2016 3:55:13 PM  
 Modified: 2/5/2016 4:36:32 PM

**Electropherogram Summary**



**Overall Results for Ladder**

Noise: 0.2

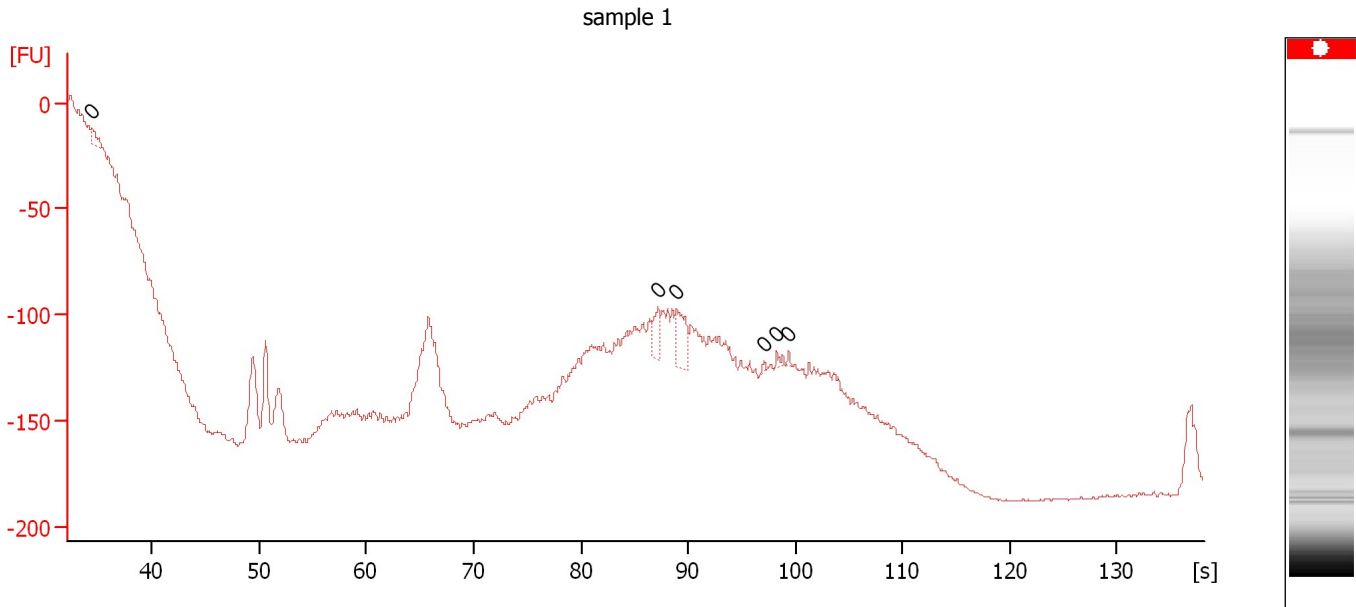
**Peak table for Ladder**

Peak	Size [bp]	Conc. [pg/μl]	Molarity [pmol/l]	Observations	Aligned Migration Time [s]
1	0	0.00	0.0	Lower Marker	49.70
2	0	0.00	0.0	Ladder Peak	52.55
3	0	0.00	0.0	Ladder Peak	59.10
4	0	0.00	0.0	Ladder Peak	64.65
5	0	0.00	0.0	Ladder Peak	70.15
6	0	0.00	0.0	Ladder Peak	80.70
7	0	0.00	0.0	Ladder Peak	90.85
8	0	0.00	0.0	Ladder Peak	98.25
9	0	0.00	0.0	Ladder Peak	104.30
10	0	0.00	0.0	Ladder Peak	108.50
11	0	0.00	0.0	Ladder Peak	114.00
12	0	0.00	0.0	Ladder Peak	122.50
13	0	0.00	0.0	Ladder Peak	126.55
14	0	0.00	0.0	Ladder Peak	128.70

Assay Class: High Sensitivity DNA Assay  
Data Path: C:\...ents and Settings\Bioanalyzer\2016-02-05\2016-02-05\_002.xad

Created: 2/5/2016 3:55:13 PM  
Modified: 2/5/2016 4:36:32 PM

**Electropherogram Summary Continued ...**



**Overall Results for sample 1 : sample 1**

Number of peaks found: 0                      Noise: 0.6

**Peak table for sample 1 : sample 1**

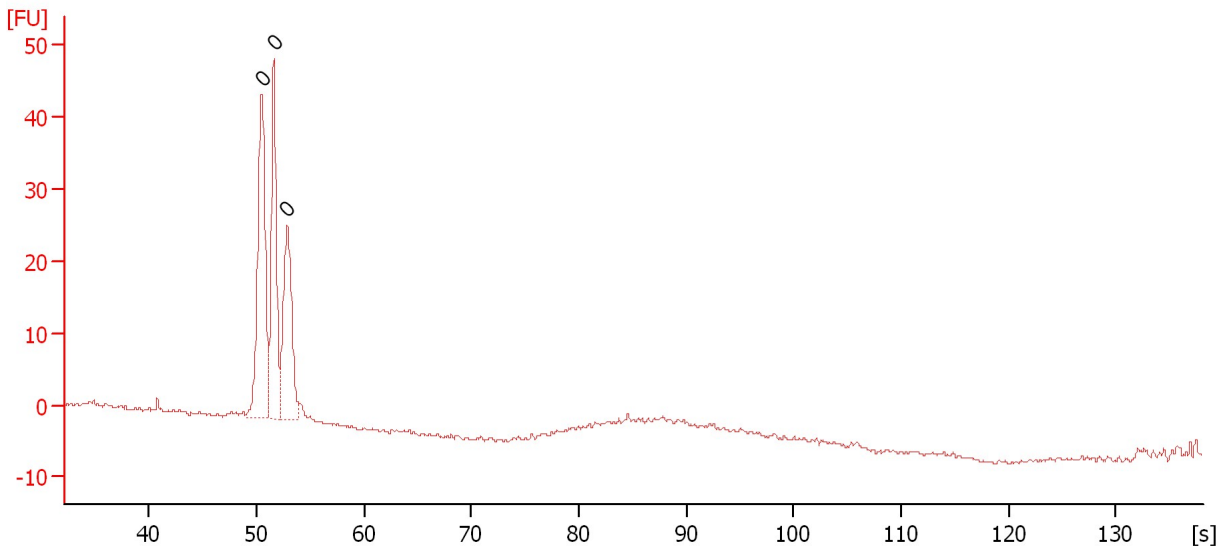
Peak	Size [bp]	Conc. [pg/μl]	Molarity [pmol/l]	Observations	Aligned Migration Time [s]
1	0	0.00	0.0		34.40
2	0	0.00	0.0		87.20
3	0	0.00	0.0		88.85
4	0	0.00	0.0		97.05
5	0	0.00	0.0		98.25
6	0	0.00	0.0		99.40

Assay Class: High Sensitivity DNA Assay  
Data Path: C:\...ents and Settings\Bioanalyzer\2016-02-05\2016-02-05\_002.xad

Created: 2/5/2016 3:55:13 PM  
Modified: 2/5/2016 4:36:32 PM

**Electropherogram Summary Continued ...**

sample 2



**Overall Results for sample 2 : sample 2**

Number of peaks found: 0                      Noise: 0.3

**Peak table for sample 2 : sample 2**

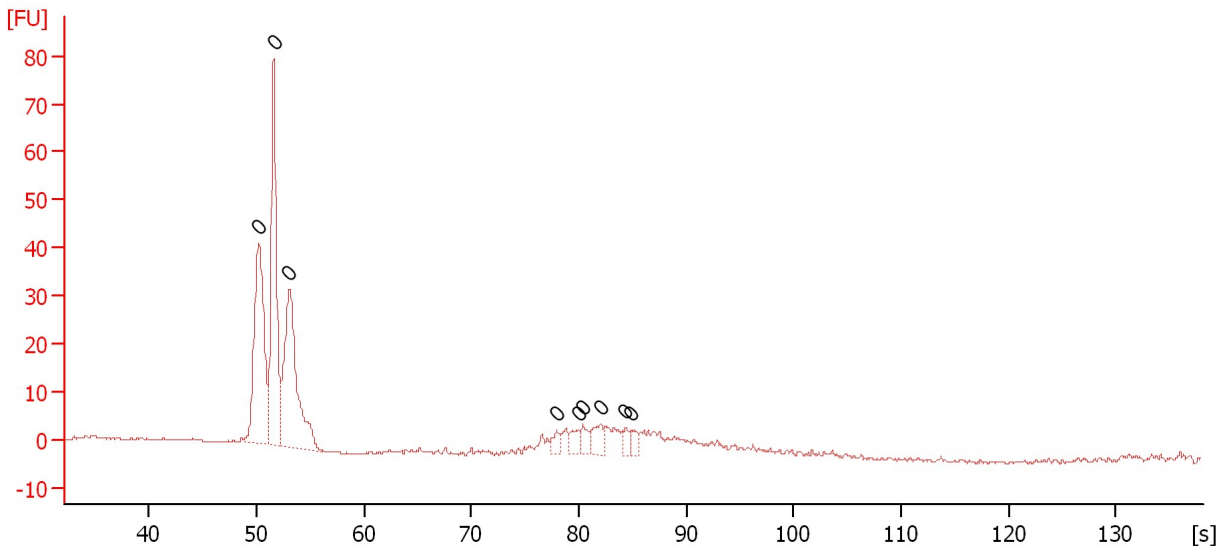
Peak	Size [bp]	Conc. [pg/μl]	Molarity [pmol/l]	Observations	Aligned Migration Time [s]
1	0	0.00	0.0		50.50
2	0	0.00	0.0		51.60
3	0	0.00	0.0		52.85

Assay Class: High Sensitivity DNA Assay  
Data Path: C:\...ents and Settings\Bioanalyzer\2016-02-05\2016-02-05\_002.xad

Created: 2/5/2016 3:55:13 PM  
Modified: 2/5/2016 4:36:32 PM

**Electropherogram Summary Continued ...**

sample 3



**Overall Results for sample 3 : sample 3**

Number of peaks found: 0                      Noise: 0.2

**Peak table for sample 3 : sample 3**

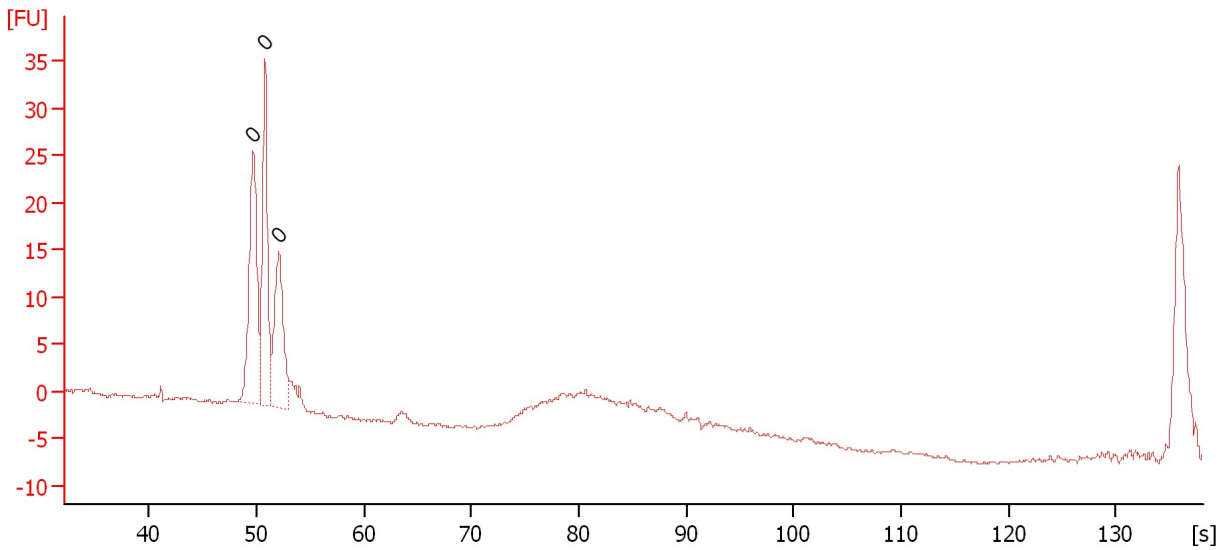
Peak	Size [bp]	Conc. [pg/ $\mu$ l]	Molarity [pmol/l]	Observations	Aligned Migration Time [s]
1	0	0.00	0.0		50.20
2	0	0.00	0.0		51.60
3	0	0.00	0.0		53.05
4	0	0.00	0.0		77.90
5	0	0.00	0.0		79.95
6	0	0.00	0.0		80.40
7	0	0.00	0.0		82.00
8	0	0.00	0.0		84.35
9	0	0.00	0.0		84.90

Assay Class: High Sensitivity DNA Assay  
Data Path: C:\...ents and Settings\Bioanalyzer\2016-02-05\2016-02-05\_002.xad

Created: 2/5/2016 3:55:13 PM  
Modified: 2/5/2016 4:36:32 PM

**Electropherogram Summary Continued ...**

sample 4



**Overall Results for sample 4 : sample 4**

Number of peaks found: 0                      Noise: 0.2

**Peak table for sample 4 : sample 4**

Peak	Size [bp]	Conc. [pg/μl]	Molarity [pmol/l]	Observations	Aligned Migration Time [s]
1	0	0.00	0.0		49.70
2	0	0.00	0.0		50.80
3	0	0.00	0.0		52.05

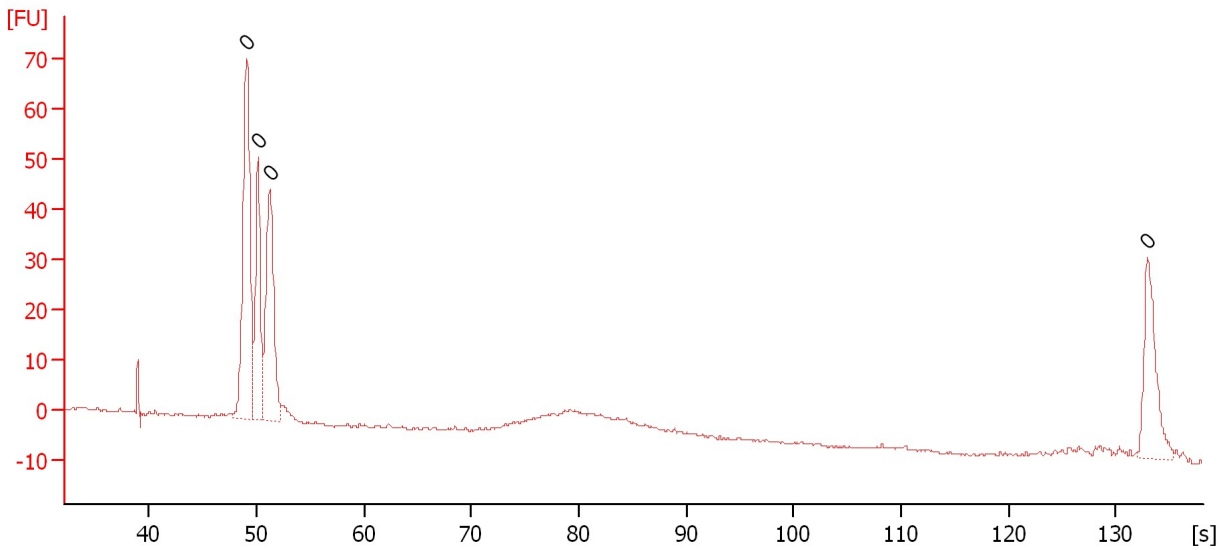


Assay Class: High Sensitivity DNA Assay  
Data Path: C:\...ents and Settings\Bioanalyzer\2016-02-05\2016-02-05\_002.xad

Created: 2/5/2016 3:55:13 PM  
Modified: 2/5/2016 4:36:32 PM

**Electropherogram Summary Continued ...**

sample 5



**Overall Results for sample 5 : sample 5**

Number of peaks found: 0                      Noise: 0.3

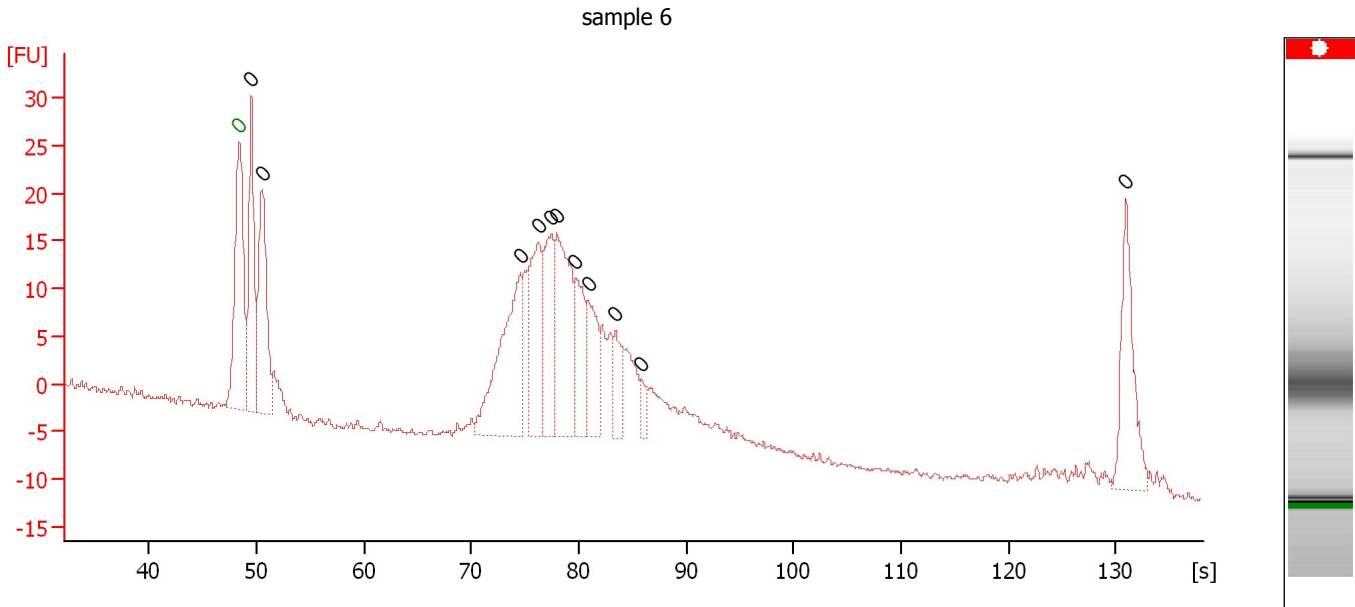
**Peak table for sample 5 : sample 5**

Peak	Size [bp]	Conc. [pg/μl]	Molarity [pmol/l]	Observations	Aligned Migration Time [s]
1	0	0.00	0.0		49.05
2	0	0.00	0.0		50.15
3	0	0.00	0.0		51.25
4	0	0.00	0.0		132.90

Assay Class: High Sensitivity DNA Assay  
 Data Path: C:\...ents and Settings\Bioanalyzer\2016-02-05\2016-02-05\_002.xad

Created: 2/5/2016 3:55:13 PM  
 Modified: 2/5/2016 4:36:32 PM

**Electropherogram Summary Continued ...**



**Overall Results for sample 6 : sample 6**

Number of peaks found: 11                      Noise: 0.2

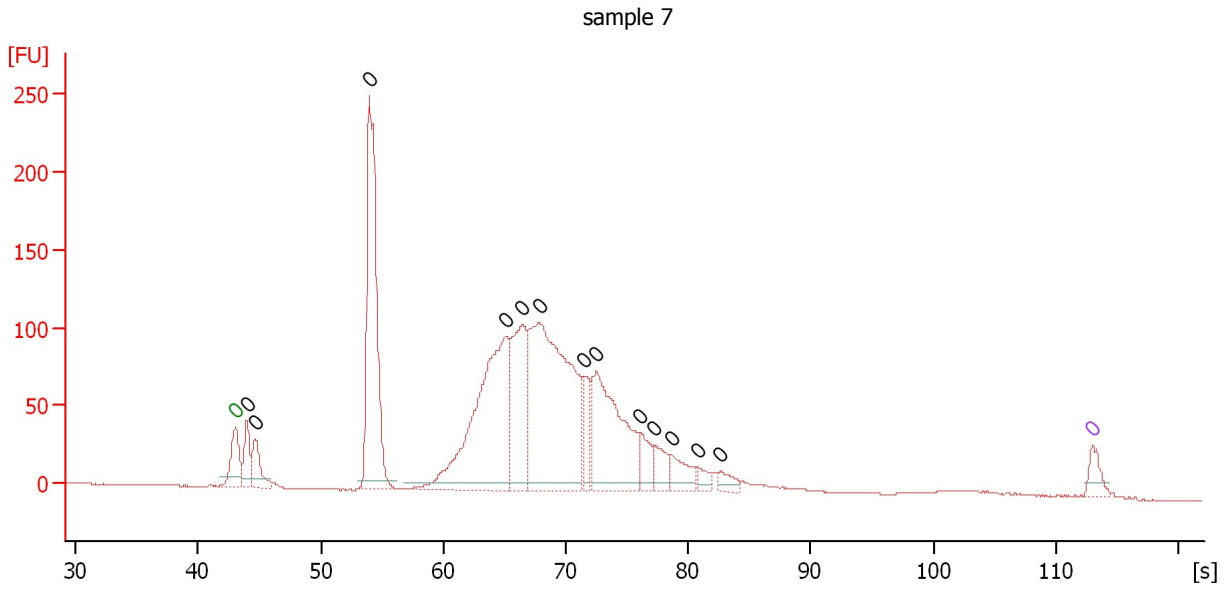
**Peak table for sample 6 : sample 6**

Peak	Size [bp]	Conc. [pg/μl]	Molarity [pmol/l]	Observations	Aligned Migration Time [s]
1	0	0.00	0.0	Lower Marker	48.40
2	0	0.00	0.0		49.50
3	0	0.00	0.0		50.50
4	0	0.00	0.0		74.55
5	0	0.00	0.0		76.20
6	0	0.00	0.0		77.40
7	0	0.00	0.0		77.95
8	0	0.00	0.0		79.65
9	0	0.00	0.0		80.85
10	0	0.00	0.0		83.40
11	0	0.00	0.0		85.80
12	0	0.00	0.0		130.90

Assay Class: High Sensitivity DNA Assay  
 Data Path: C:\...ents and Settings\Bioanalyzer\2016-02-05\2016-02-05\_002.xad

Created: 2/5/2016 3:55:13 PM  
 Modified: 2/5/2016 4:36:32 PM

**Electropherogram Summary Continued ...**



**Overall Results for sample 7 : sample 7**

Number of peaks found: 13                      Noise: 0.2

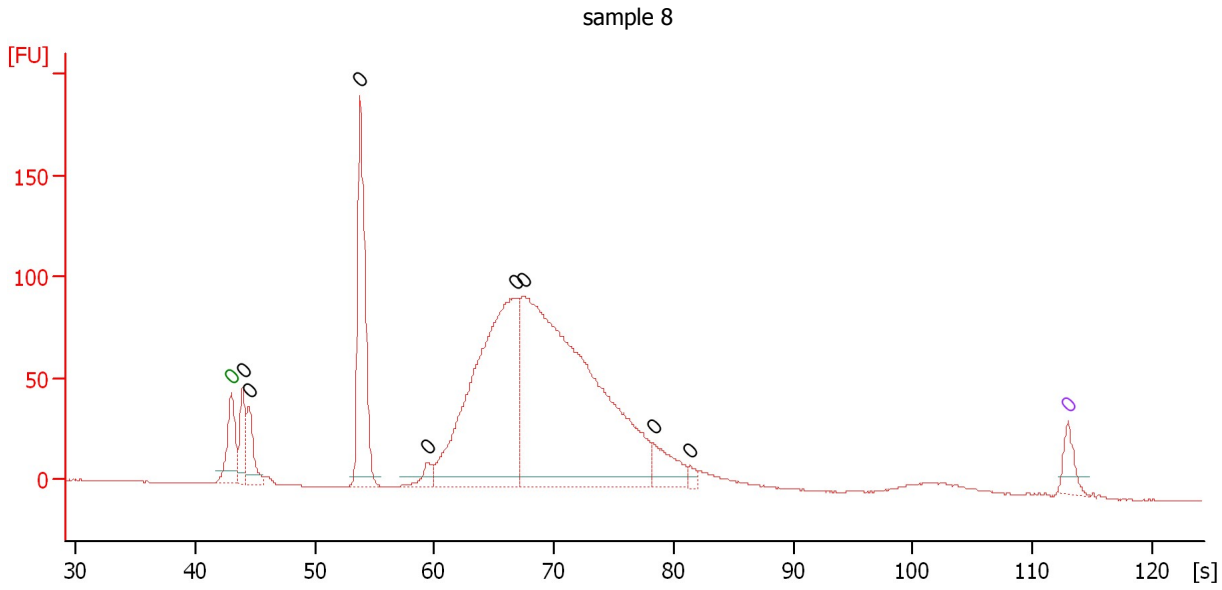
**Peak table for sample 7 : sample 7**

Peak	Size [bp]	Conc. [pg/μl]	Molarity [pmol/l]	Observations	Aligned Migration Time [s]
1	0	0.00	0.0	Lower Marker	43.00
2	0	0.00	0.0		43.96
3	0	0.00	0.0		44.67
4	0	0.00	0.0		53.96
5	0	0.00	0.0		65.14
6	0	0.00	0.0		66.41
7	0	0.00	0.0		67.81
8	0	0.00	0.0		71.49
9	0	0.00	0.0		72.50
10	0	0.00	0.0		76.09
11	0	0.00	0.0		77.23
12	0	0.00	0.0		78.64
13	0	0.00	0.0		80.78
14	0	0.00	0.0		82.62
15	0	0.00	0.0	Upper Marker	113.00

Assay Class: High Sensitivity DNA Assay  
 Data Path: C:\...ents and Settings\Bioanalyzer\2016-02-05\2016-02-05\_002.xad

Created: 2/5/2016 3:55:13 PM  
 Modified: 2/5/2016 4:36:32 PM

**Electropherogram Summary Continued ...**



**Overall Results for sample 8 : sample 8**

Number of peaks found: 8                      Noise: 0.1

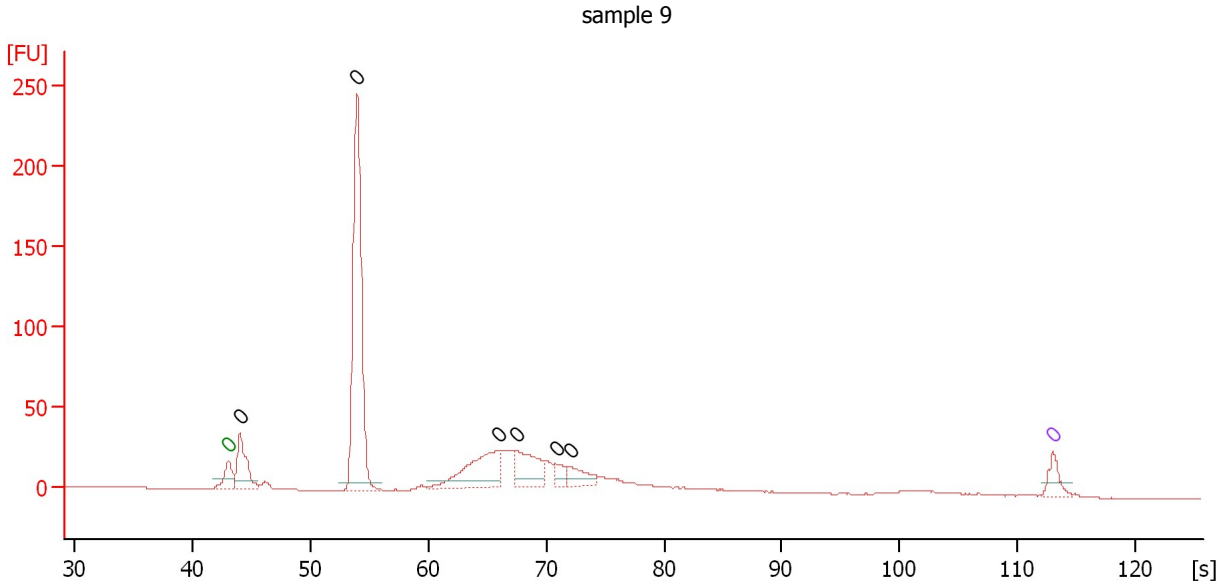
**Peak table for sample 8 : sample 8**

Peak	Size [bp]	Conc. [pg/μl]	Molarity [pmol/l]	Observations	Aligned Migration Time [s]
1	0	0.00	0.0	Lower Marker	43.00
2	0	0.00	0.0		43.94
3	0	0.00	0.0		44.48
4	0	0.00	0.0		53.74
5	0	0.00	0.0		59.35
6	0	0.00	0.0		66.72
7	0	0.00	0.0		67.49
8	0	0.00	0.0		78.27
9	0	0.00	0.0		81.37
10	0	0.00	0.0	Upper Marker	113.00

Assay Class: High Sensitivity DNA Assay  
 Data Path: C:\...ents and Settings\Bioanalyzer\2016-02-05\2016-02-05\_002.xad

Created: 2/5/2016 3:55:13 PM  
 Modified: 2/5/2016 4:36:32 PM

**Electropherogram Summary Continued ...**



**Overall Results for sample 9 : sample 9**

Number of peaks found: 6                      Noise: 0.2

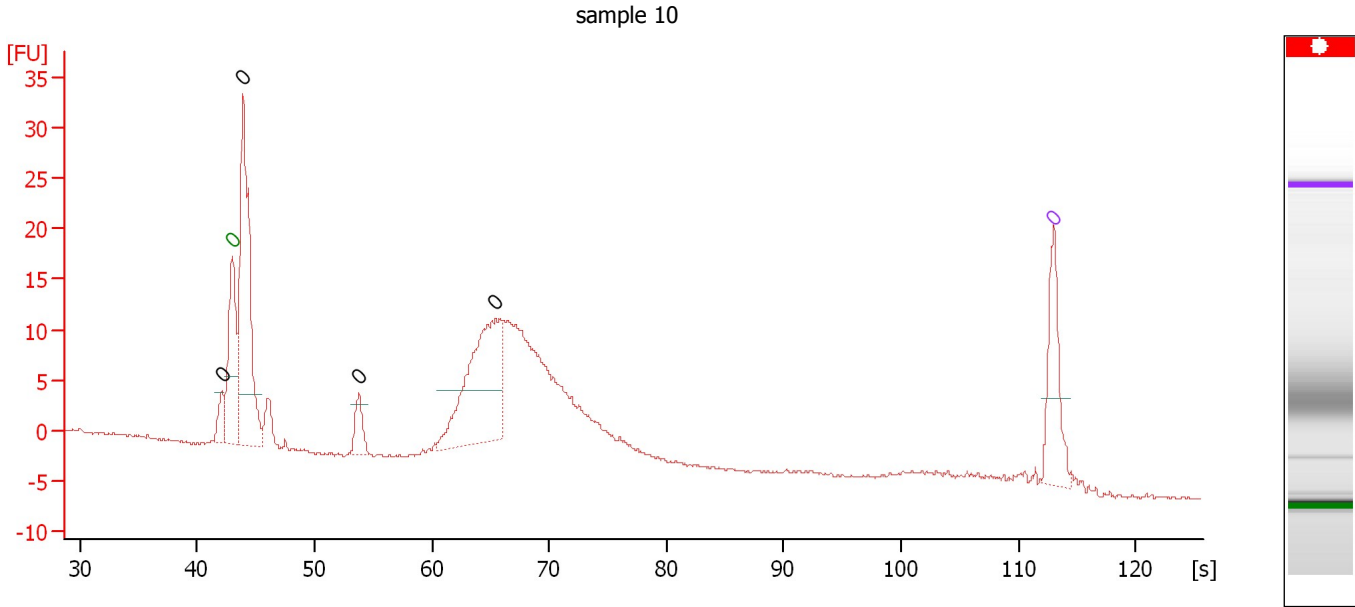
**Peak table for sample 9 : sample 9**

Peak	Size [bp]	Conc. [pg/μl]	Molarity [pmol/l]	Observations	Aligned Migration Time [s]
1	0	0.00	0.0	Lower Marker	43.00
2	0	0.00	0.0		44.00
3	0	0.00	0.0		53.94
4	0	0.00	0.0		65.94
5	0	0.00	0.0		67.44
6	0	0.00	0.0		70.82
7	0	0.00	0.0		72.05
8	0	0.00	0.0	Upper Marker	113.00

Assay Class: High Sensitivity DNA Assay  
 Data Path: C:\...ents and Settings\Bioanalyzer\2016-02-05\2016-02-05\_002.xad

Created: 2/5/2016 3:55:13 PM  
 Modified: 2/5/2016 4:36:32 PM

**Electropherogram Summary Continued ...**



**Overall Results for sample 10 : sample 10**

Number of peaks found: 4                      Noise: 0.2

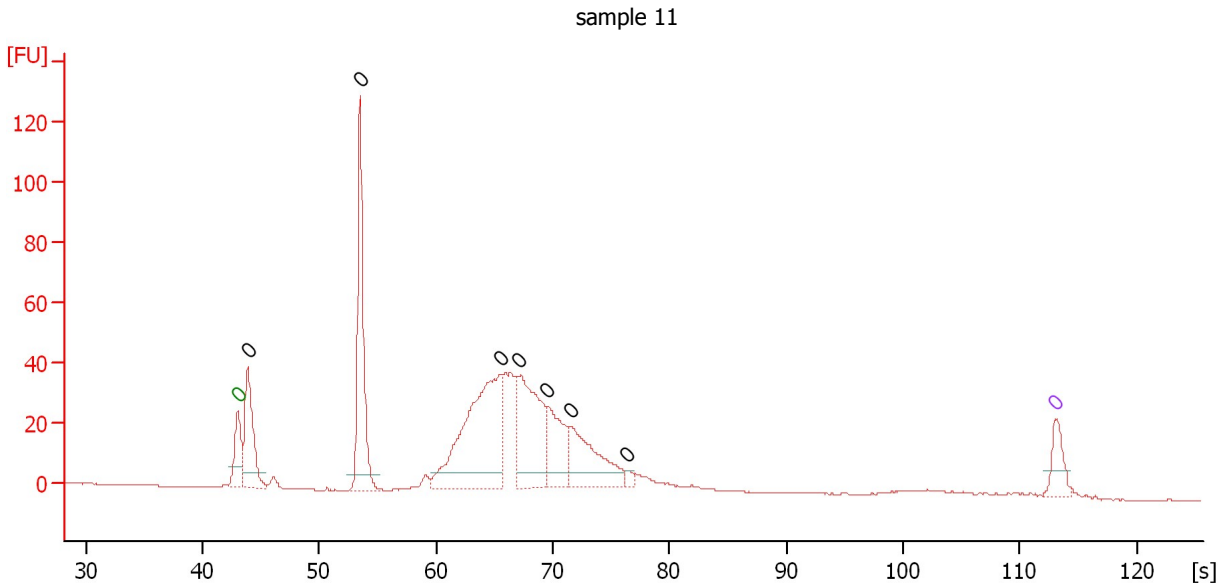
**Peak table for sample 10 : sample 10**

Peak	Size [bp]	Conc. [pg/μl]	Molarity [pmol/l]	Observations	Aligned Migration Time [s]
1	0	0.00	0.0		42.08
2	0	0.00	0.0	Lower Marker	43.00
3	0	0.00	0.0		43.87
4	0	0.00	0.0		53.76
5	0	0.00	0.0		65.43
6	0	0.00	0.0	Upper Marker	113.00

Assay Class: High Sensitivity DNA Assay  
 Data Path: C:\...ents and Settings\Bioanalyzer\2016-02-05\2016-02-05\_002.xad

Created: 2/5/2016 3:55:13 PM  
 Modified: 2/5/2016 4:36:32 PM

**Electropherogram Summary Continued ...**



**Overall Results for sample 11 : sample 11**

Number of peaks found: 7                      Noise: 0.1

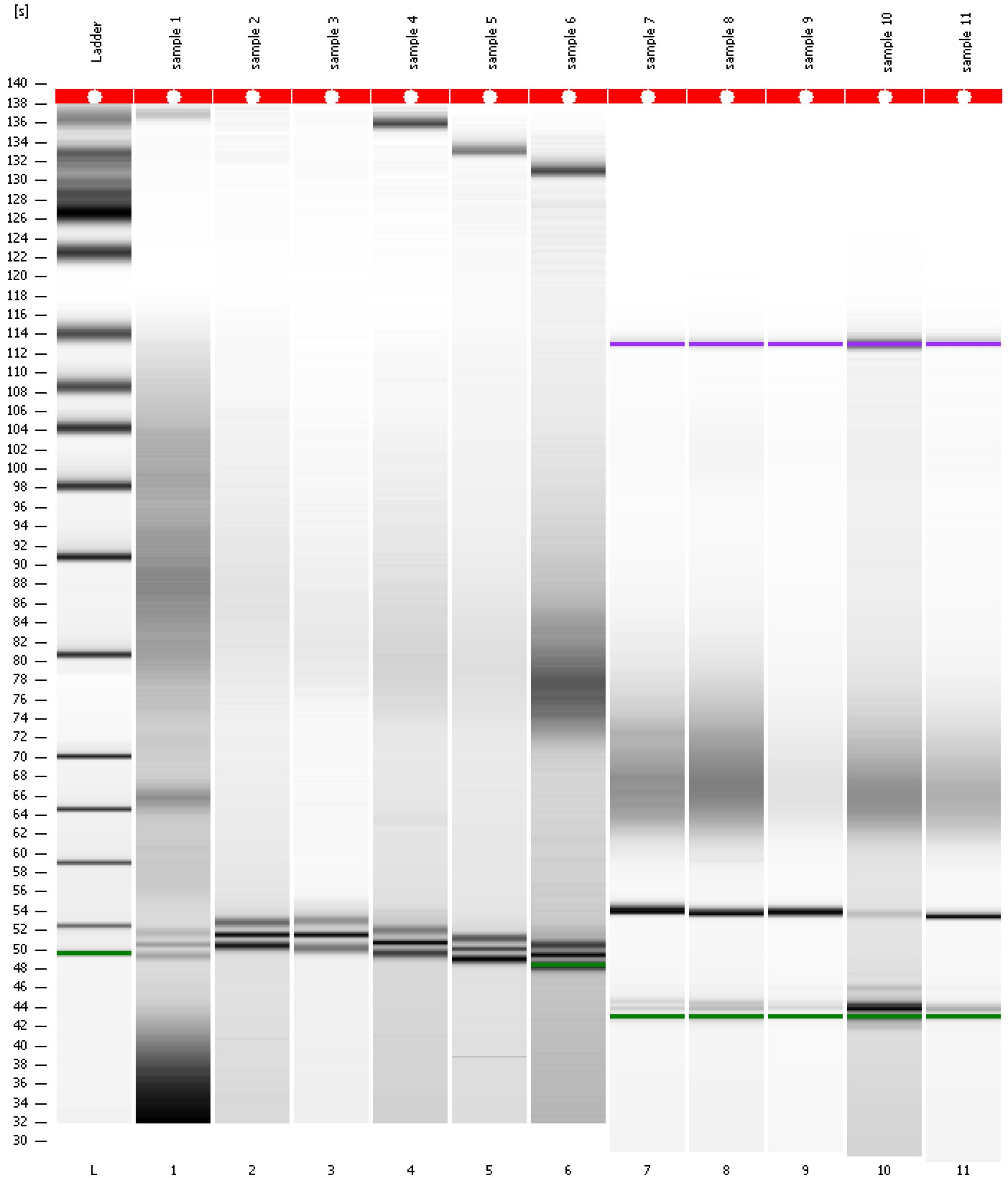
**Peak table for sample 11 : sample 11**

Peak	Size [bp]	Conc. [pg/μl]	Molarity [pmol/l]	Observations	Aligned Migration Time [s]
1	0	0.00	0.0	Lower Marker	43.00
2	0	0.00	0.0		43.83
3	0	0.00	0.0		53.45
4	0	0.00	0.0		65.46
5	0	0.00	0.0		67.02
6	0	0.00	0.0		69.55
7	0	0.00	0.0		71.58
8	0	0.00	0.0		76.41
9	0	0.00	0.0	Upper Marker	113.00

Assay Class: High Sensitivity DNA Assay  
Data Path: C:\...ents and Settings\Bioanalyzer\2016-02-05\2016-02-05\_002.xad

Created: 2/5/2016 3:55:13 PM  
Modified: 2/5/2016 4:36:32 PM

**Gel Image**





Assay Class: High Sensitivity DNA Assay Created: 2/5/2016 3:55:13 PM  
 Data Path: C:\...ents and Settings\Bioanalyzer\2016-02-05\2016-02-05\_002.xad Modified: 2/5/2016 4:36:32 PM

**Run Logbook**

Description	Number	Source	Category	Sub Category	Time	Time Zone	User	Host
Run ended on port 1 (Number of wells acquired: 12)		Instrument	Run		2/5/2016 4:36:32 PM	(GMT --08:00) Pacific Standard Time	UC Davis	D8XSMGH1
Run started on port 1 (File: C:\Documents and Settings\Bioanalyzer\2016-02-05\2016-02-05_002.xad)		Instrument	Run		2/5/2016 3:55:19 PM	(GMT --08:00) Pacific Standard Time	UC Davis	D8XSMGH1
Product Number : G2938B		Instrument	Run		2/5/2016 3:55:19 PM	(GMT --08:00) Pacific Standard Time	UC Davis	D8XSMGH1
Name :		Instrument	Run		2/5/2016 3:55:19 PM	(GMT --08:00) Pacific Standard Time	UC Davis	D8XSMGH1
Vendor : Agilent Technologies		Instrument	Run		2/5/2016 3:55:19 PM	(GMT --08:00) Pacific Standard Time	UC Davis	D8XSMGH1
Serial# : DE13701086		Instrument	Run		2/5/2016 3:55:19 PM	(GMT --08:00) Pacific Standard Time	UC Davis	D8XSMGH1
Firmware : C.01.069		Instrument	Run		2/5/2016 3:55:19 PM	(GMT --08:00) Pacific Standard Time	UC Davis	D8XSMGH1
Cartridge : Electrode		Instrument	Run		2/5/2016 3:55:19 PM	(GMT --08:00) Pacific Standard Time	UC Davis	D8XSMGH1