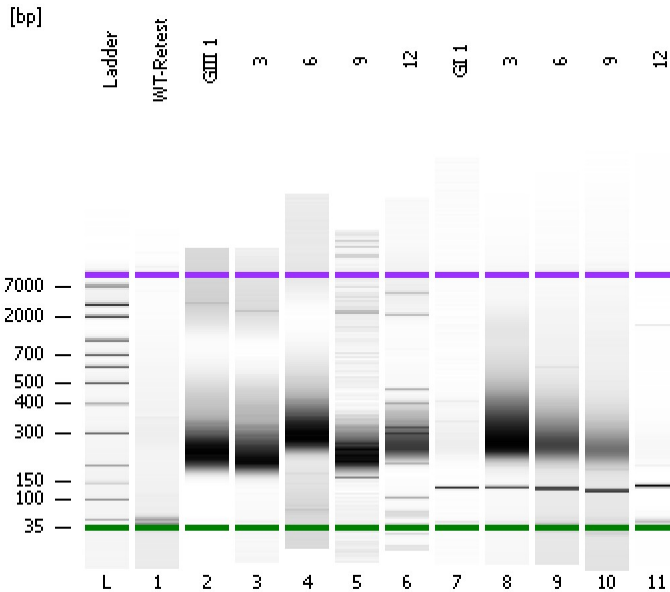


Assay Class: High Sensitivity DNA Assay  
Data Path: C:\...ents and Settings\Bioanalyzer\2016-02-17\2016-02-17\_004.xad

Created: 2/17/2016 2:56:14 PM  
Modified: 2/17/2016 3:37:17 PM

### Electrophoresis File Run Summary



#### Instrument Information:

Instrument Name: DE13701086      Firmware: C.01.069  
Serial#: DE13701086      Type: G2938B

#### Assay Information:

Assay Origin Path: C:\Program Files\Agilent\2100 bioanalyzer\2100 expert\assays\dsDNA\High Sensitivity DNA.xsy  
Assay Class: High Sensitivity DNA Assay  
Version: 1.03  
Assay Comments: Copyright © 2003-2010 Agilent Technologies

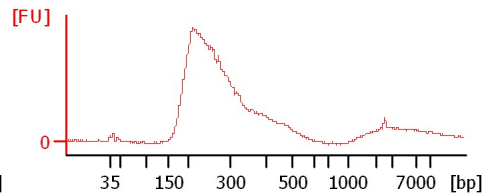
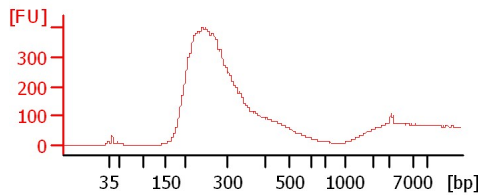
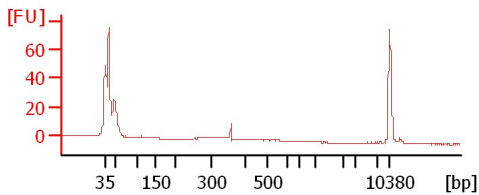
#### Chip Information:

Chip Lot #:      Reagent Kit Lot #:      Chip Comments:

WT-Retest

GIII 1

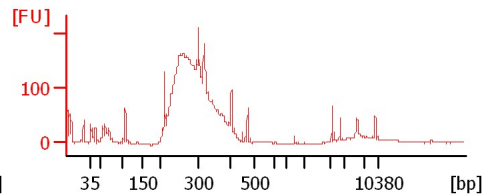
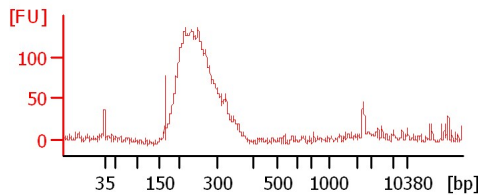
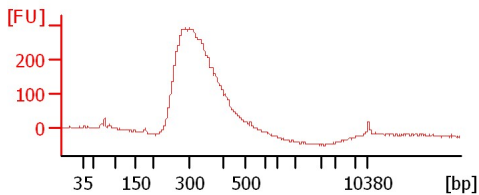
3



6

9

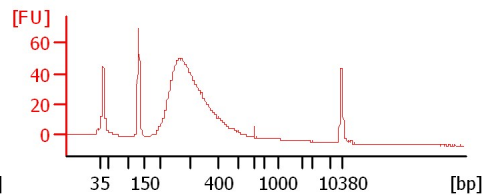
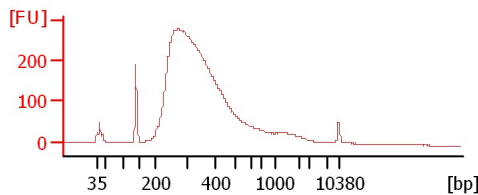
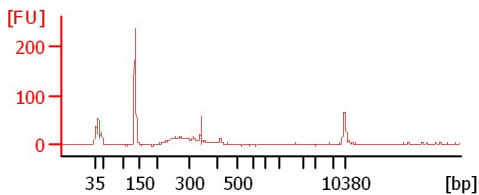
12



GI 1

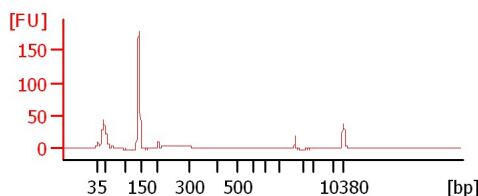
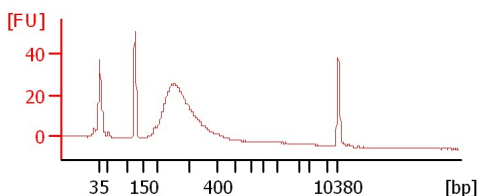
3

6



9

12



Assay Class: High Sensitivity DNA Assay  
Data Path: C:\...ents and Settings\Bioanalyzer\2016-02-17\2016-02-17\_004.xad

Created: 2/17/2016 2:56:14 PM  
Modified: 2/17/2016 3:37:17 PM

**Electrophoresis File Run Summary (Chip Summary)**

Sample Name	Sample Comment	Rest. Digest	Status	Observation	Result Label	Result Color
WT-Retest		<input type="checkbox"/>	✓			
GIII 1		<input type="checkbox"/>	✓			
3		<input type="checkbox"/>	✓			
6		<input type="checkbox"/>	✓			
9		<input type="checkbox"/>	✓			
12		<input type="checkbox"/>	✓			
GI 1		<input type="checkbox"/>	✓			
3		<input type="checkbox"/>	✓			
6		<input type="checkbox"/>	✓			
9		<input type="checkbox"/>	✓			
12		<input type="checkbox"/>	✓			
Ladder		<input type="checkbox"/>	✓			

**Chip Lot #**

**Reagent Kit Lot #**

**Chip Comments :**

Assay Class: High Sensitivity DNA Assay  
Data Path: C:\...ents and Settings\Bioanalyzer\2016-02-17\2016-02-17\_004.xad

Created: 2/17/2016 2:56:14 PM  
Modified: 2/17/2016 3:37:17 PM

**Electrophoresis Assay Details**

**General Analysis Settings**

Number of Available Sample and Ladder Wells (Max.) : 12  
Minimum Visible Range [s] : 32  
Maximum Visible Range [s] : 138  
Start Analysis Time Range [s] : 33  
End Analysis Time Range [s] : 137.5  
Ladder Concentration [pg/ $\mu$ l] : 1950  
Uses Standard Area for Ladder Fragments  
Lower Marker Concentration [pg/ $\mu$ l] : 125  
Upper Marker Concentration [pg/ $\mu$ l] : 75  
Used Upper Marker for Quantitation  
Standard Curve Fit is Point to Point  
Show Data Aligned to Lower and Upper Marker

**Integrator Settings**

Integration Start Time [s] : 33.05  
Integration End Time [s] : 137  
Slope Threshold : 0.8  
Height Threshold [FU] : 5  
Area Threshold : 0.1  
Width Threshold [s] : 0.6  
Baseline Plateau [s] : 0.5

**Filter Settings**

Filter Width [s] : 0.5  
Polynomial Order : 4

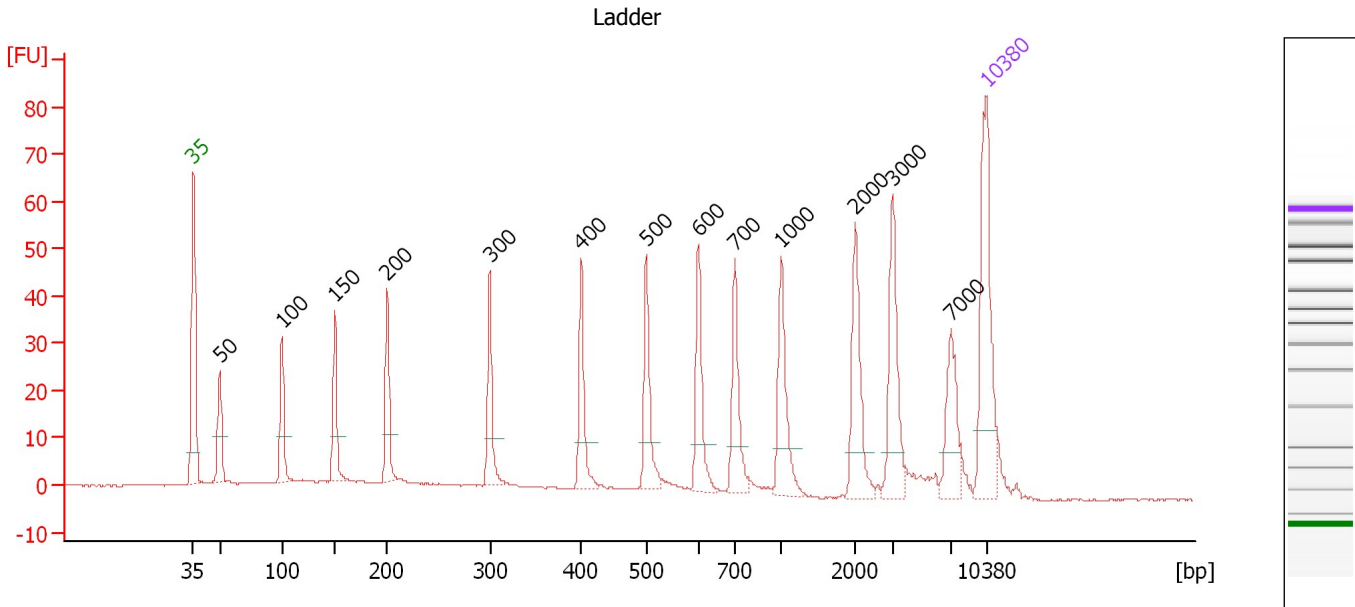
**Ladder**

Ladder Peak	Size	Area
1	35	160
2	50	210
3	100	208
4	150	221
5	200	242
6	300	270
7	400	305
8	500	306
9	600	336
10	700	321
11	1000	366
12	2000	413
13	3000	411
14	7000	400
15	10380	214

Assay Class: High Sensitivity DNA Assay  
 Data Path: C:\...ents and Settings\Bioanalyzer\2016-02-17\2016-02-17\_004.xad

Created: 2/17/2016 2:56:14 PM  
 Modified: 2/17/2016 3:37:17 PM

**Electropherogram Summary**



**Overall Results for Ladder**

Noise: 0.2

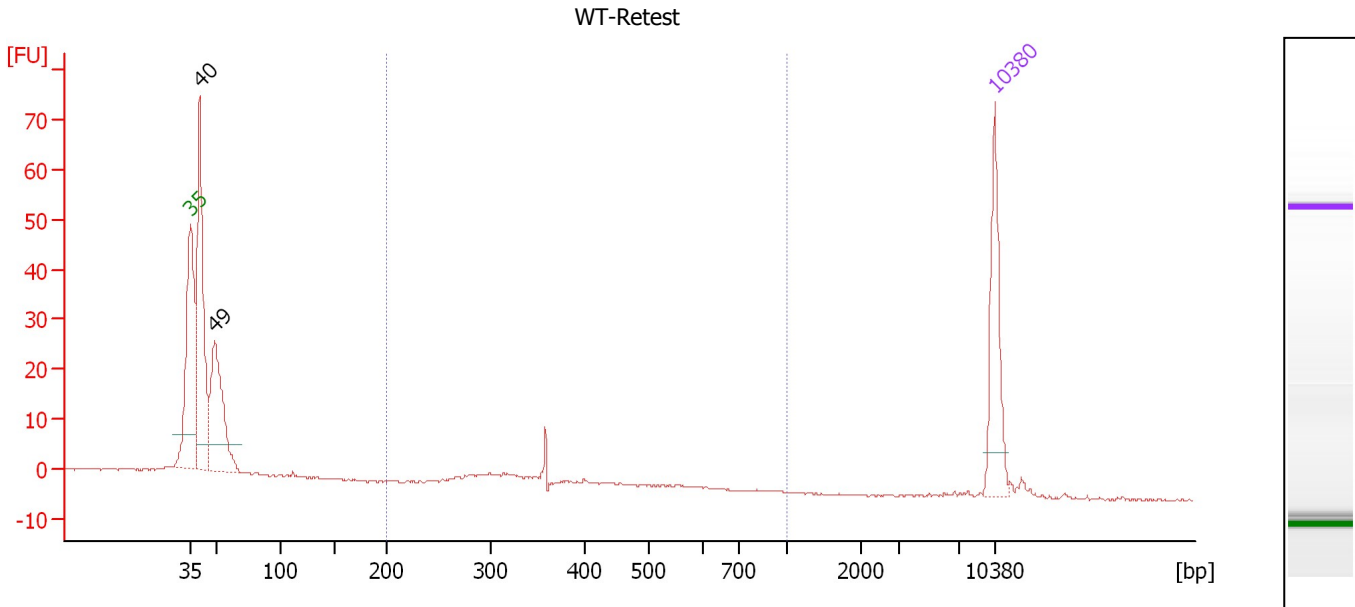
**Peak table for Ladder**

Peak	Size [bp]	Conc. [pg/μl]	Molarity [pmol/l]	Observations	Aligned Migration Time [s]
1	35	125.00	5,411.3	Lower Marker	43.00
2	50	150.00	4,545.5	Ladder Peak	45.31
3	100	150.00	2,272.7	Ladder Peak	50.81
4	150	150.00	1,515.2	Ladder Peak	55.47
5	200	150.00	1,136.4	Ladder Peak	60.08
6	300	150.00	757.6	Ladder Peak	69.16
7	400	150.00	568.2	Ladder Peak	77.25
8	500	150.00	454.5	Ladder Peak	82.94
9	600	150.00	378.8	Ladder Peak	87.55
10	700	150.00	324.7	Ladder Peak	90.75
11	1,000	150.00	227.3	Ladder Peak	94.84
12	2,000	150.00	113.6	Ladder Peak	101.38
13	3,000	150.00	75.8	Ladder Peak	104.67
14	7,000	150.00	32.5	Ladder Peak	109.85
15	10,380	75.00	10.9	Upper Marker	113.00

Assay Class: High Sensitivity DNA Assay  
 Data Path: C:\...ents and Settings\Bioanalyzer\2016-02-17\2016-02-17\_004.xad

Created: 2/17/2016 2:56:14 PM  
 Modified: 2/17/2016 3:37:17 PM

**Electropherogram Summary Continued ...**



**Overall Results for sample 1 : WT-Retest**

Number of peaks found: 2                      Corr. Area 1: 20.0  
 Noise: 0.2

**Peak table for sample 1 : WT-Retest**

Peak	Size [bp]	Conc. [pg/μl]	Molarity [pmol/l]	Observations	Aligned Migration Time [s]
1	35	125.00	5,411.3	Lower Marker	43.00
2	40	300.53	11,345.4		43.79
3	49	189.33	5,903.4		45.09
4	10,380	75.00	10.9	Upper Marker	113.00

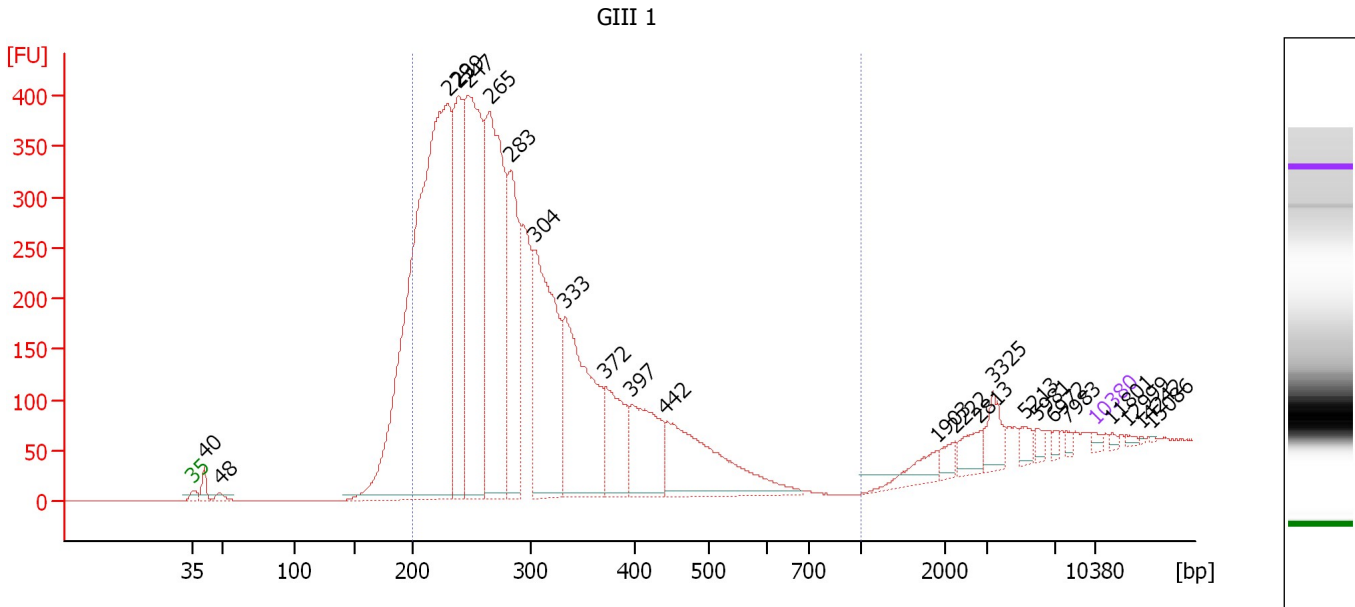
**Region table for sample 1 : WT-Retest**

From [bp]	To [bp]	Average Size [bp]	Corr. Area	Molarity [pmol/l]	Co Conc. lor [pg/μl]	% of Total	Size distribution in CV [%]
200	1,000	341	20.0	174.4	38.03	9	16.7

Assay Class: High Sensitivity DNA Assay  
 Data Path: C:\...ents and Settings\Bioanalyzer\2016-02-17\2016-02-17\_004.xad

Created: 2/17/2016 2:56:14 PM  
 Modified: 2/17/2016 3:37:17 PM

**Electropherogram Summary Continued ...**



**Overall Results for sample 2 : GIII 1**

Number of peaks found: 24                      Corr. Area 1: 7,043.6  
 Noise: 0.2

**Peak table for sample 2 : GIII 1**

Peak	Size [bp]	Conc. [pg/μl]	Molarity [pmol/l]	Observations	Aligned Migration Time [s]
1	35	125.00	5,411.3	Lower Marker	43.00
2	40	382.81	14,361.3		43.83
3	48	198.15	6,229.0		45.03
4	229	22,012.95	145,393.5		62.75
5	239	5,238.01	33,210.4		63.62
6	247	9,156.57	56,127.6		64.36
7	265	9,289.33	53,028.9		66.02
8	283	4,418.14	23,637.7		67.63
9	304	5,964.46	29,760.7		69.45
10	333	5,398.61	24,539.4		71.85
11	372	2,104.57	8,567.0		75.00
12	397	2,366.85	9,026.7		77.03
13	442	3,717.75	12,745.7		79.64
14	1,903	457.68	364.4		100.75
15	2,222	235.34	160.4		102.11
16	2,813	433.47	233.5		104.06
17	3,325	526.53	240.0		105.09
18	5,213	223.80	65.1		107.54
19	5,981	149.27	37.8		108.53
20	6,972	80.15	17.4		109.81
21	7,983	70.23	13.3		110.76
22	10,380	75.00	10.9	Upper Marker	113.00
23	11,801	0.00	0.0		114.32
24	12,999	0.00	0.0		115.44
25	14,242	0.00	0.0		116.60

Assay Class: High Sensitivity DNA Assay  
Data Path: C:\...ents and Settings\Bioanalyzer\2016-02-17\2016-02-17\_004.xad

Created: 2/17/2016 2:56:14 PM  
Modified: 2/17/2016 3:37:17 PM

**Electropherogram Summary Continued ...****... Peak table for sample 2 : GIII 1**

Peak	Size [bp]	Conc. [pg/ $\mu$ l]	Molarity [pmol/l]	Observations	Aligned Migration Time [s]
26	15,086	0.00	0.0		117.39

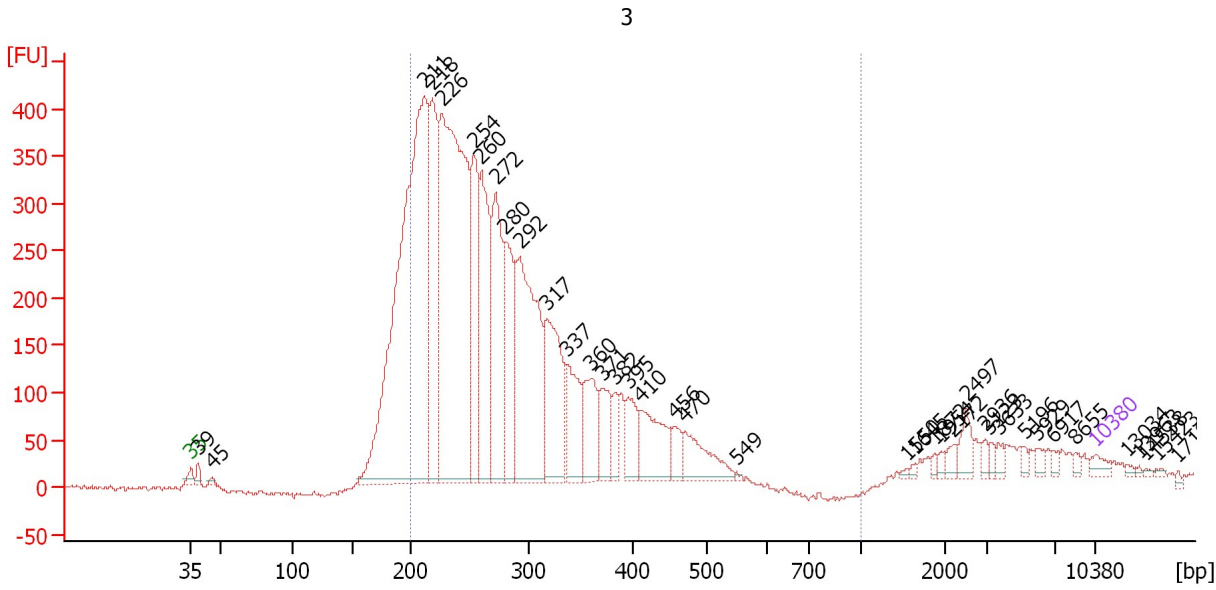
**Region table for sample 2 : GIII 1**

From [bp]	To [bp]	Average Size [bp]	Corr. Area	Molarity [pmol/l]	Co Conc. lor [pg/ $\mu$ l]	% of Total	Size distribution in CV [%]
200	1,000	282	7,043.6	334,500.4	59,193.18	89	22.3

Assay Class: High Sensitivity DNA Assay  
 Data Path: C:\...ents and Settings\Bioanalyzer\2016-02-17\2016-02-17\_004.xad

Created: 2/17/2016 2:56:14 PM  
 Modified: 2/17/2016 3:37:17 PM

**Electropherogram Summary Continued ...**



**Overall Results for sample 3 : 3**

Number of peaks found: 38                      Corr. Area 1: 7,239.8  
 Noise: 2.9

**Peak table for sample 3 : 3**

Peak	Size [bp]	Conc. [pg/μl]	Molarity [pmol/l]	Observations	Aligned Migration Time [s]
1	35	125.00	5,411.3	Lower Marker	43.00
2	39	115.46	4,513.5		43.58
3	45	48.72	1,623.6		44.61
4	211	8,104.05	58,218.4		61.07
5	218	2,157.51	15,014.1		61.69
6	226	6,342.19	42,537.7		62.43
7	254	1,478.52	8,833.0		64.94
8	260	1,896.40	11,071.6		65.48
9	272	1,766.80	9,849.4		66.59
10	280	1,199.46	6,501.9		67.30
11	292	2,766.11	14,341.5		68.45
12	317	1,481.05	7,072.6		70.55
13	337	777.59	3,494.3		72.16
14	360	681.74	2,872.5		73.98
15	371	450.21	1,839.6		74.89
16	382	257.84	1,022.6		75.79
17	395	404.48	1,552.4		76.82
18	410	699.31	2,584.5		77.81
19	456	222.03	738.4		80.41
20	470	530.22	1,708.9		81.24
21	549	17.55	48.4		85.20
22	1,550	17.65	17.3		98.44
23	1,645	23.22	21.4		99.06
24	1,872	34.46	27.9		100.54
25	1,954	40.67	31.5		101.08



Assay Class: High Sensitivity DNA Assay  
 Data Path: C:\...ents and Settings\Bioanalyzer\2016-02-17\2016-02-17\_004.xad

Created: 2/17/2016 2:56:14 PM  
 Modified: 2/17/2016 3:37:17 PM

**Electropherogram Summary Continued ...**

**... Peak table for sample 3 : 3**

Peak	Size [bp]	Conc. [pg/μl]	Molarity [pmol/l]	Observations	Aligned Migration Time [s]
26	2,172	69.05	48.2		101.95
27	2,497	175.24	106.3		103.02
28	2,936	62.09	32.0		104.46
29	3,123	47.88	23.2		104.83
30	3,633	59.08	24.6		105.49
31	5,196	40.53	11.8		107.51
32	5,929	59.52	15.2		108.46
33	6,917	43.83	9.6		109.74
34	8,655	39.09	6.8		111.39
35	10,380	75.00	10.9	Upper Marker	113.00
36	13,034	0.00	0.0		115.47
37	13,963	0.00	0.0		116.34
38	14,538	0.00	0.0		116.88
39	15,423	0.00	0.0		117.70
40	17,192	0.00	0.0		119.35

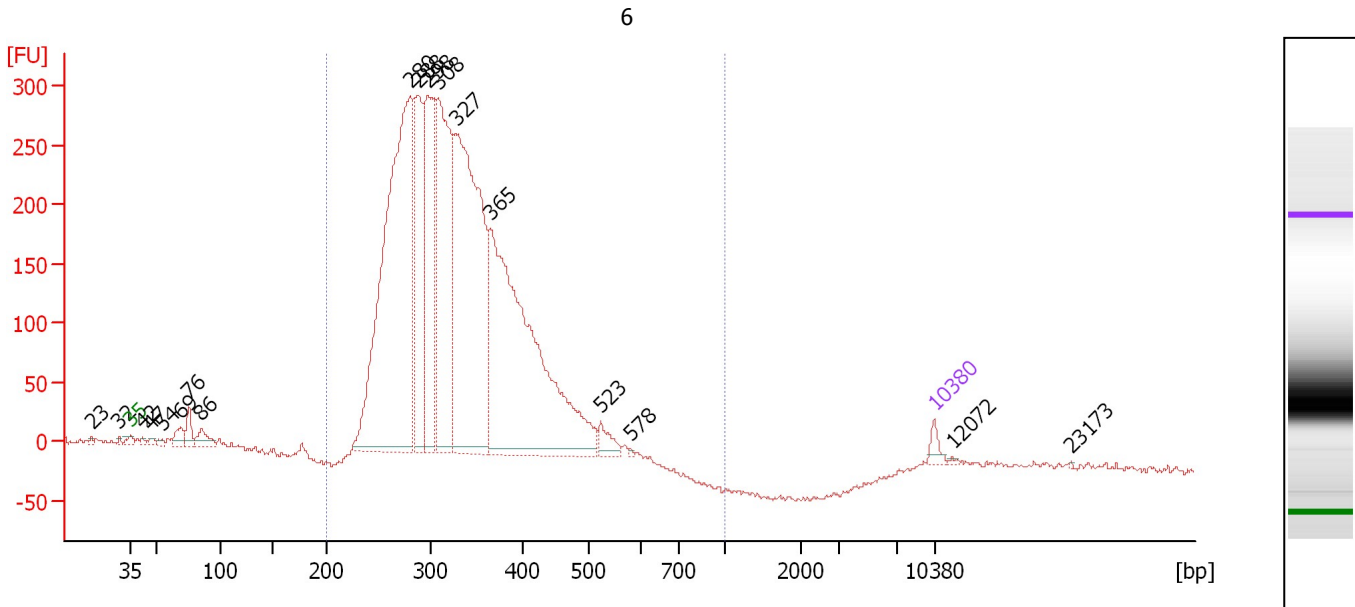
**Region table for sample 3 : 3**

From [bp]	To [bp]	Average Size [bp]	Corr. Area	Molarity [pmol/l]	Co Conc. lor [pg/μl]	% of Total	Size distribution in CV [%]
200	1,000	285	7,239.8	154,549.0	27,233.47	82	25.2

Assay Class: High Sensitivity DNA Assay  
 Data Path: C:\...ents and Settings\Bioanalyzer\2016-02-17\2016-02-17\_004.xad

Created: 2/17/2016 2:56:14 PM  
 Modified: 2/17/2016 3:37:17 PM

**Electropherogram Summary Continued ...**



**Overall Results for sample 4 : 6**

Number of peaks found: 18                      Corr. Area 1: 5,473.0  
 Noise: 2.7

**Peak table for sample 4 : 6**

Peak	Size [bp]	Conc. [pg/μl]	Molarity [pmol/l]	Observations	Aligned Migration Time [s]
1	23	0.00	0.0		39.66
2	32	0.00	0.0		42.07
3	35	125.00	5,411.3	Lower Marker	43.00
4	42	40.86	1,475.8		44.07
5	47	48.24	1,562.4		44.81
6	54	48.95	1,364.3		45.79
7	69	176.76	3,874.8		47.41
8	76	212.87	4,251.2		48.15
9	86	204.64	3,623.8		49.22
10	280	5,826.56	31,491.9		67.37
11	288	1,777.39	9,350.7		68.07
12	298	1,917.07	9,756.5		68.95
13	308	2,705.86	13,321.4		69.78
14	327	4,508.03	20,871.0		71.36
15	365	4,709.86	19,575.0		74.38
16	523	162.91	472.2		83.99
17	578	15.21	39.9		86.54
18	10,380	75.00	10.9	Upper Marker	113.00
19	12,072	0.00	0.0		114.58
20	23,173	0.00	0.0		124.93

**Region table for sample 4 : 6**

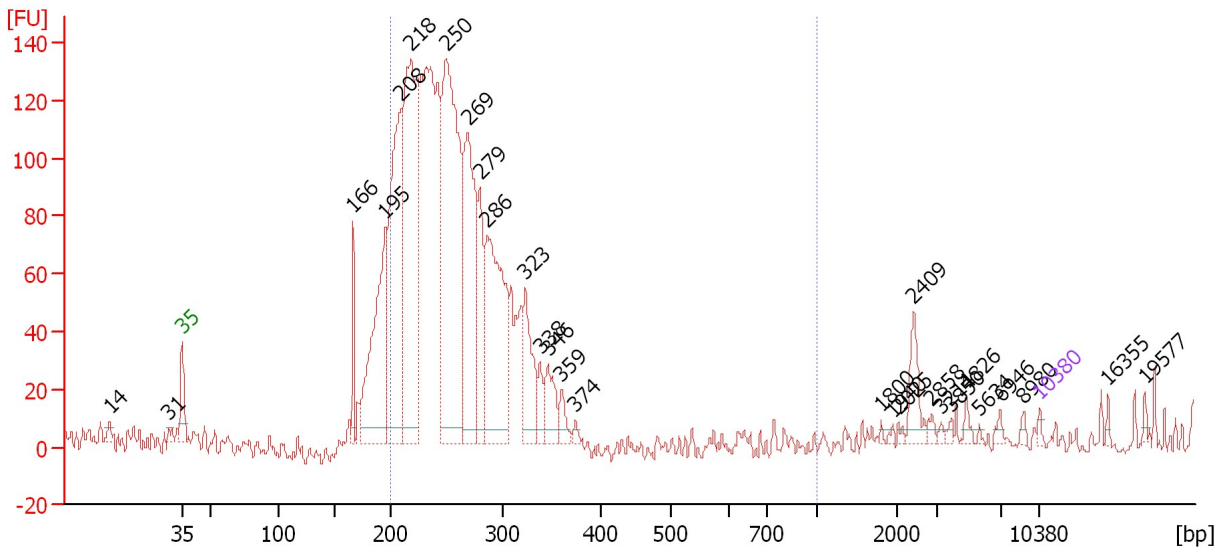
From [bp]	To [bp]	Average Size [bp]	Corr. Area	Molarity [pmol/l]	Co Conc. [pg/μl]	% of Total	Size distribution in CV [%]
200	1,000	331	5,473.0	103,055.1	21,546.57	96	18.6

Assay Class: High Sensitivity DNA Assay  
 Data Path: C:\...ents and Settings\Bioanalyzer\2016-02-17\2016-02-17\_004.xad

Created: 2/17/2016 2:56:14 PM  
 Modified: 2/17/2016 3:37:17 PM

**Electropherogram Summary Continued ...**

9



**Overall Results for sample 5 : 9**

Number of peaks found: 28                      Corr. Area 1: 1,989.1  
 Noise: 4.3

**Peak table for sample 5 : 9**

Peak	Size [bp]	Conc. [pg/μl]	Molarity [pmol/l]	Observations	Aligned Migration Time [s]
1	14	0.00	0.0		37.08
2	31	0.00	0.0		41.87
3	35	125.00	5,411.3	Lower Marker	43.00
4	166	1,084.20	9,875.2		56.97
5	195	5,836.37	45,423.8		59.59
6	208	7,710.64	56,032.8		60.85
7	218	10,147.60	70,655.0		61.68
8	250	11,252.95	68,272.5		64.59
9	269	6,172.10	34,775.9		66.33
10	279	2,275.38	12,336.4		67.29
11	286	6,119.97	32,402.4		67.90
12	323	2,069.38	9,700.5		71.03
13	338	598.68	2,685.7		72.21
14	346	1,041.65	4,563.8		72.86
15	359	481.93	2,032.5		73.95
16	374	131.65	533.6		75.13
17	1,800	43.74	36.8		100.07
18	1,940	55.89	43.7		100.99
19	2,025	77.98	58.3		101.46
20	2,409	749.25	471.3		102.73
21	2,858	130.55	69.2		104.21
22	3,211	66.51	31.4		104.95
23	3,850	89.22	35.1		105.77
24	4,826	158.62	49.8		107.04
25	5,634	42.84	11.5		108.08

Assay Class: High Sensitivity DNA Assay  
 Data Path: C:\...ents and Settings\Bioanalyzer\2016-02-17\2016-02-17\_004.xad

Created: 2/17/2016 2:56:14 PM  
 Modified: 2/17/2016 3:37:17 PM

### Electropherogram Summary Continued ...

#### ... Peak table for sample 5 : 9

Peak	Size [bp]	Conc. [pg/ $\mu$ l]	Molarity [pmol/l]	Observations	Aligned Migration Time [s]
26	6,946	121.98	26.6		109.78
27	8,980	95.81	16.2		111.69
28	10,380	75.00	10.9	Upper Marker	113.00
29	16,355	0.00	0.0		118.57
30	19,577	0.00	0.0		121.58

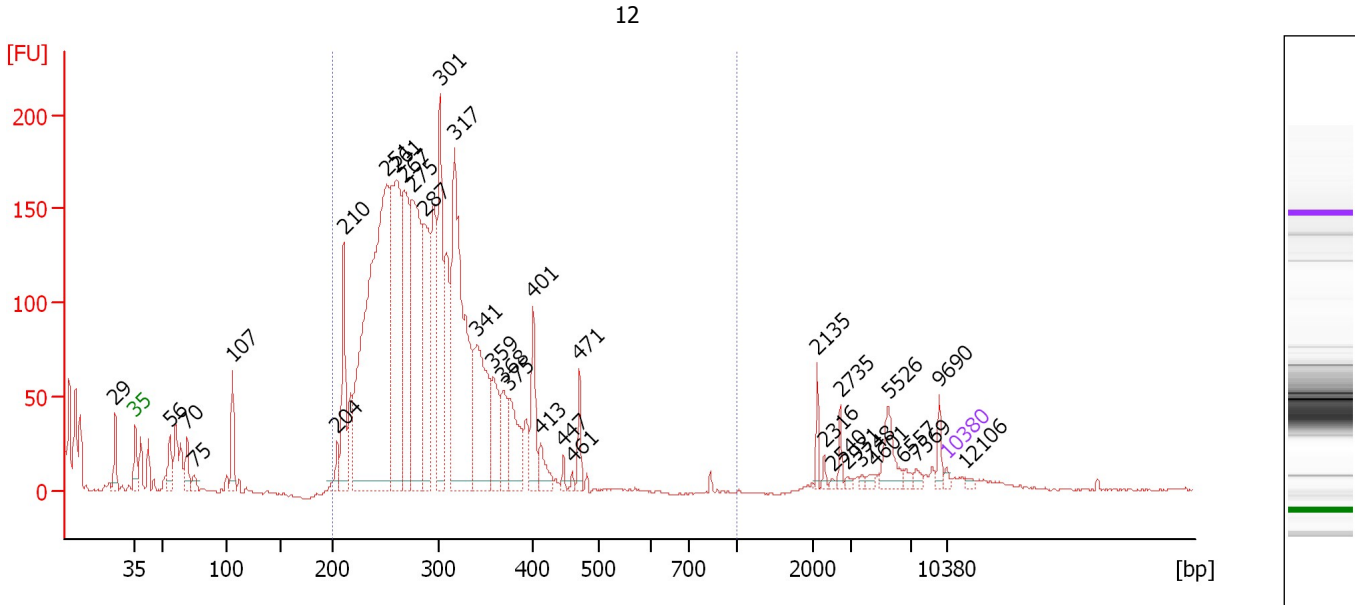
#### Region table for sample 5 : 9

From [bp]	To [bp]	Average Size [bp]	Corr. Area	Molarity [pmol/l]	Co Conc. lor [pg/ $\mu$ l]	% of Total	Size distribution in CV [%]
200	1,000	265	1,989.1	377,207.0	63,460.23	79	25.6

Assay Class: High Sensitivity DNA Assay  
 Data Path: C:\...ents and Settings\Bioanalyzer\2016-02-17\2016-02-17\_004.xad

Created: 2/17/2016 2:56:14 PM  
 Modified: 2/17/2016 3:37:17 PM

**Electropherogram Summary Continued ...**



**Overall Results for sample 6 : 12**

Number of peaks found: 35                      Corr. Area 1: 2,186.8  
 Noise: 0.8

**Peak table for sample 6 : 12**

Peak	Size [bp]	Conc. [pg/μl]	Molarity [pmol/l]	Observations	Aligned Migration Time [s]
1	29	0.00	0.0		41.25
2	35	125.00	5,411.3	Lower Marker	43.00
3	56	786.33	21,193.0		45.99
4	70	712.28	15,508.9		47.46
5	75	240.94	4,866.3		48.06
6	107	1,180.09	16,785.6		51.42
7	204	474.64	3,526.9		60.43
8	210	2,260.69	16,312.3		60.98
9	251	14,332.98	86,515.8		64.71
10	261	6,361.38	36,980.2		65.58
11	267	4,398.21	24,937.7		66.18
12	275	5,652.17	31,104.3		66.92
13	287	3,505.23	18,506.4		67.97
14	301	3,900.46	19,614.0		69.26
15	317	7,446.15	35,565.3		70.55
16	341	3,311.38	14,709.3		72.48
17	359	1,402.47	5,923.8		73.91
18	368	975.06	4,010.4		74.69
19	375	1,498.46	6,060.4		75.19
20	401	1,136.75	4,294.0		77.31
21	413	534.30	1,959.1		78.00
22	447	139.84	473.8		79.93
23	461	84.96	279.3		80.71
24	471	503.16	1,617.2		81.31
25	2,135	229.50	162.9		101.82

Assay Class: High Sensitivity DNA Assay  
 Data Path: C:\...ents and Settings\Bioanalyzer\2016-02-17\2016-02-17\_004.xad

Created: 2/17/2016 2:56:14 PM  
 Modified: 2/17/2016 3:37:17 PM

**Electropherogram Summary Continued ...**

**... Peak table for sample 6 : 12**

Peak	Size [bp]	Conc. [pg/μl]	Molarity [pmol/l]	Observations	Aligned Migration Time [s]
26	2,316	88.40	57.8		102.42
27	2,540	50.22	30.0		103.16
28	2,735	198.01	109.7		103.80
29	2,931	62.18	32.1		104.45
30	3,748	61.17	24.7		105.64
31	4,601	96.17	31.7		106.75
32	5,526	659.73	180.9		107.94
33	6,557	111.76	25.8		109.27
34	7,569	112.29	22.5		110.38
35	9,690	237.58	37.2		112.36
36	10,380	75.00	10.9	Upper Marker	113.00
37	12,106	0.00	0.0		114.61

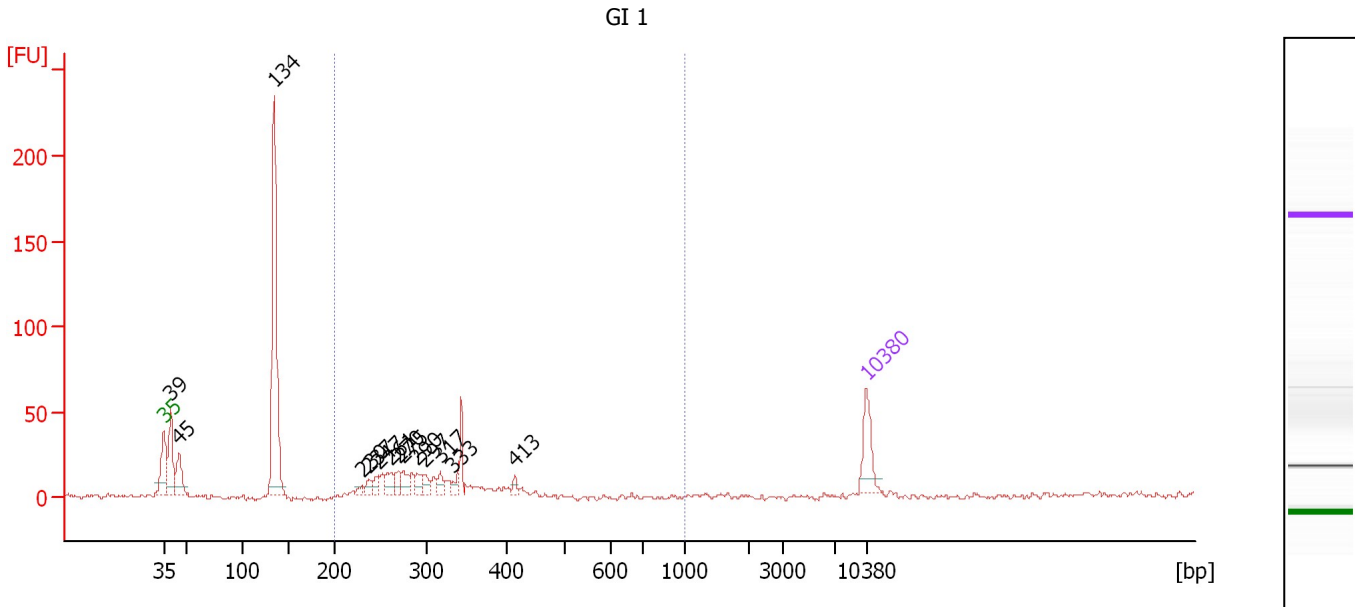
**Region table for sample 6 : 12**

From [bp]	To [bp]	Average Size [bp]	Corr. Area	Molarity [pmol/l]	Co Conc. lor [pg/μl]	% of Total	Size distribution in CV [%]
200	1,000	289	2,186.8	258,278.4	47,916.32	96	15.8

Assay Class: High Sensitivity DNA Assay  
 Data Path: C:\...ents and Settings\Bioanalyzer\2016-02-17\2016-02-17\_004.xad

Created: 2/17/2016 2:56:14 PM  
 Modified: 2/17/2016 3:37:17 PM

**Electropherogram Summary Continued ...**



**Overall Results for sample 7 : GI 1**

Number of peaks found: 14                      Corr. Area 1: 241.3  
 Noise: 1.4

**Peak table for sample 7 : GI 1**

Peak	Size [bp]	Conc. [pg/μl]	Molarity [pmol/l]	Observations	Aligned Migration Time [s]
1	35	125.00	5,411.3	Lower Marker	43.00
2	39	179.59	6,890.1		43.69
3	45	107.26	3,609.7		44.54
4	134	641.43	7,242.3		53.99
5	230	12.58	83.0		62.76
6	237	22.95	146.7		63.45
7	247	26.68	163.6		64.35
8	261	43.59	252.9		65.63
9	270	32.46	182.2		66.42
10	275	37.50	206.5		66.90
11	290	28.47	148.9		68.23
12	297	24.62	125.5		68.92
13	317	25.36	121.0		70.56
14	333	17.43	79.4		71.79
15	413	13.97	51.2		78.00
16	10,380	75.00	10.9	Upper Marker	113.00

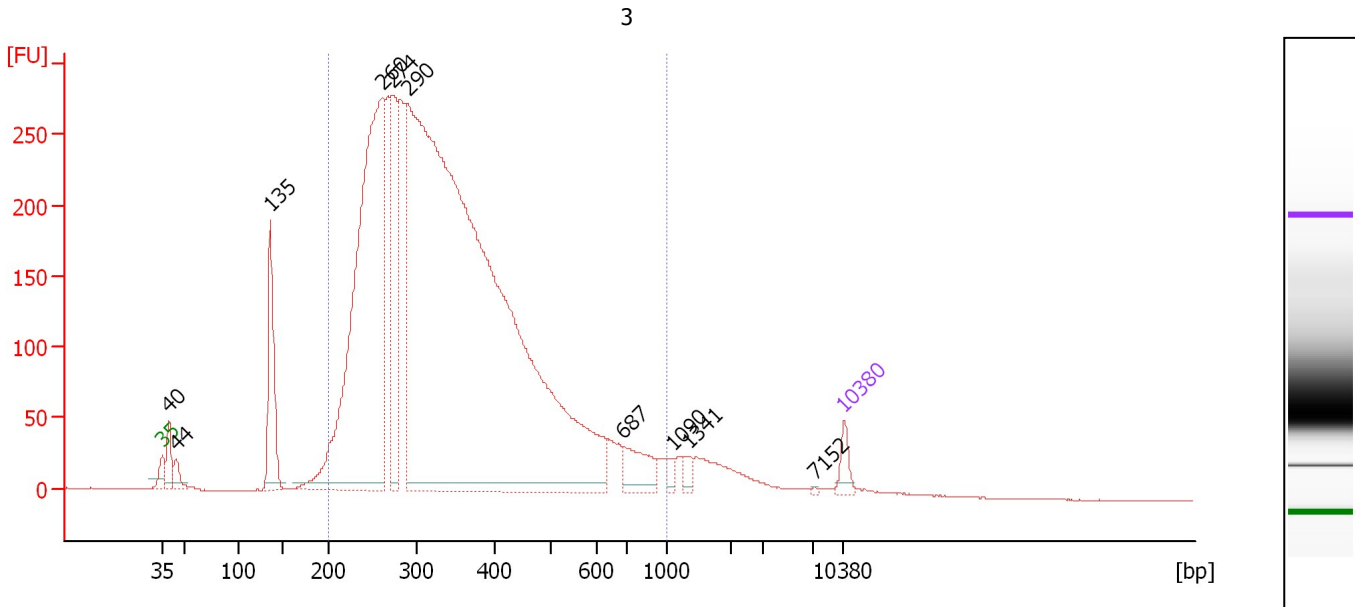
**Region table for sample 7 : GI 1**

From [bp]	To [bp]	Average Size [bp]	Corr. Area	Molarity [pmol/l]	Co Conc. lor [pg/μl]	% of Total	Size distribution in CV [%]
200	1,000	312	241.3	2,942.9	578.85	41	20.5

Assay Class: High Sensitivity DNA Assay  
 Data Path: C:\...ents and Settings\Bioanalyzer\2016-02-17\2016-02-17\_004.xad

Created: 2/17/2016 2:56:14 PM  
 Modified: 2/17/2016 3:37:17 PM

**Electropherogram Summary Continued ...**



**Overall Results for sample 8 : 3**

Number of peaks found: 10                      Corr. Area 1: 6,314.6  
 Noise: 0.2

**Peak table for sample 8 : 3**

Peak	Size [bp]	Conc. [pg/μl]	Molarity [pmol/l]	Observations	Aligned Migration Time [s]
1	35	125.00	5,411.3	Lower Marker	43.00
2	40	202.04	7,724.3		43.71
3	44	119.95	4,106.1		44.42
4	135	740.98	8,289.3		54.11
5	260	3,940.98	22,942.1		65.55
6	274	784.95	4,348.0		66.75
7	290	11,090.82	57,983.9		68.23
8	687	234.76	517.5		90.34
9	1,090	45.16	62.8		95.43
10	1,341	50.26	56.8		97.07
11	7,152	5.59	1.2		109.99
12	10,380	75.00	10.9	Upper Marker	113.00

**Region table for sample 8 : 3**

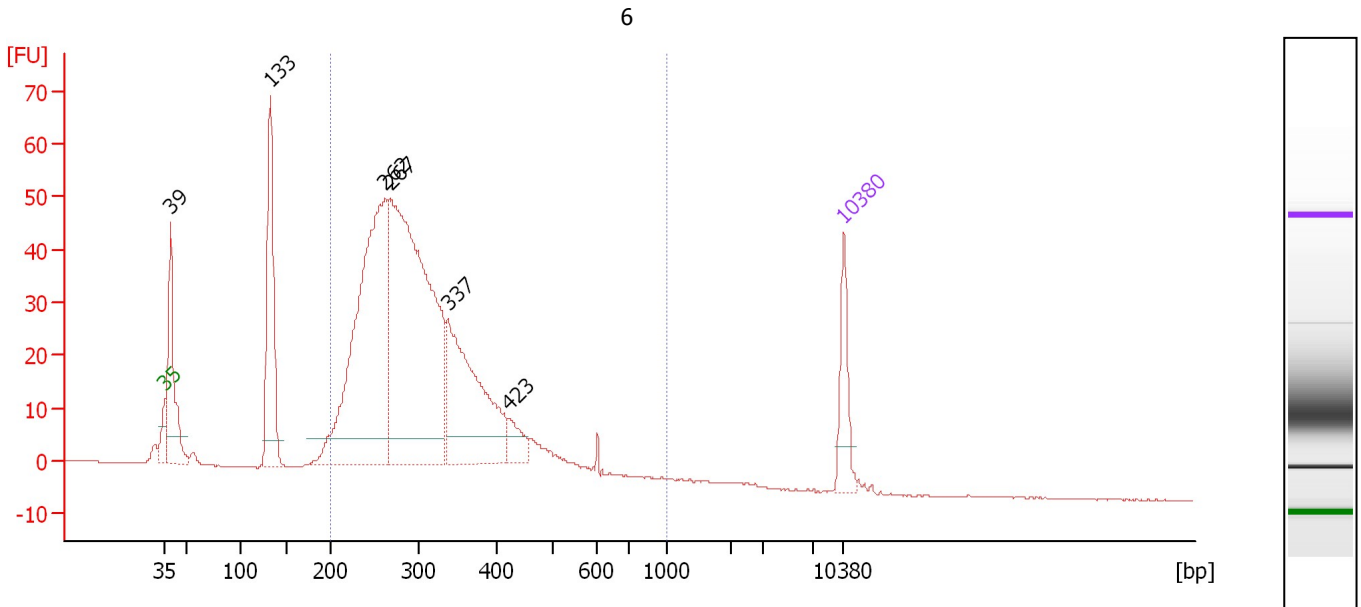
From [bp]	To [bp]	Average Size [bp]	Corr. Area	Molarity [pmol/l]	Co Conc. lor [pg/μl]	% of Total	Size distribution in CV [%]
200	1,000	356	6,314.6	78,036.7	16,287.80	91	34.8



Assay Class: High Sensitivity DNA Assay  
 Data Path: C:\...ents and Settings\Bioanalyzer\2016-02-17\2016-02-17\_004.xad

Created: 2/17/2016 2:56:14 PM  
 Modified: 2/17/2016 3:37:17 PM

**Electropherogram Summary Continued ...**



**Overall Results for sample 9 : 6**

Number of peaks found: 6                      Corr. Area 1: 854.9  
 Noise: 0.1

**Peak table for sample 9 : 6**

Peak	Size [bp]	Conc. [pg/μl]	Molarity [pmol/l]	Observations	Aligned Migration Time [s]
1	35	125.00	5,411.3	Lower Marker	43.00
2	39	294.96	11,478.8		43.60
3	133	375.67	4,281.0		53.88
4	262	875.97	5,057.0		65.75
5	267	1,077.80	6,109.4		66.19
6	337	416.64	1,871.4		72.18
7	423	46.44	166.4		78.55
8	10,380	75.00	10.9	Upper Marker	113.00

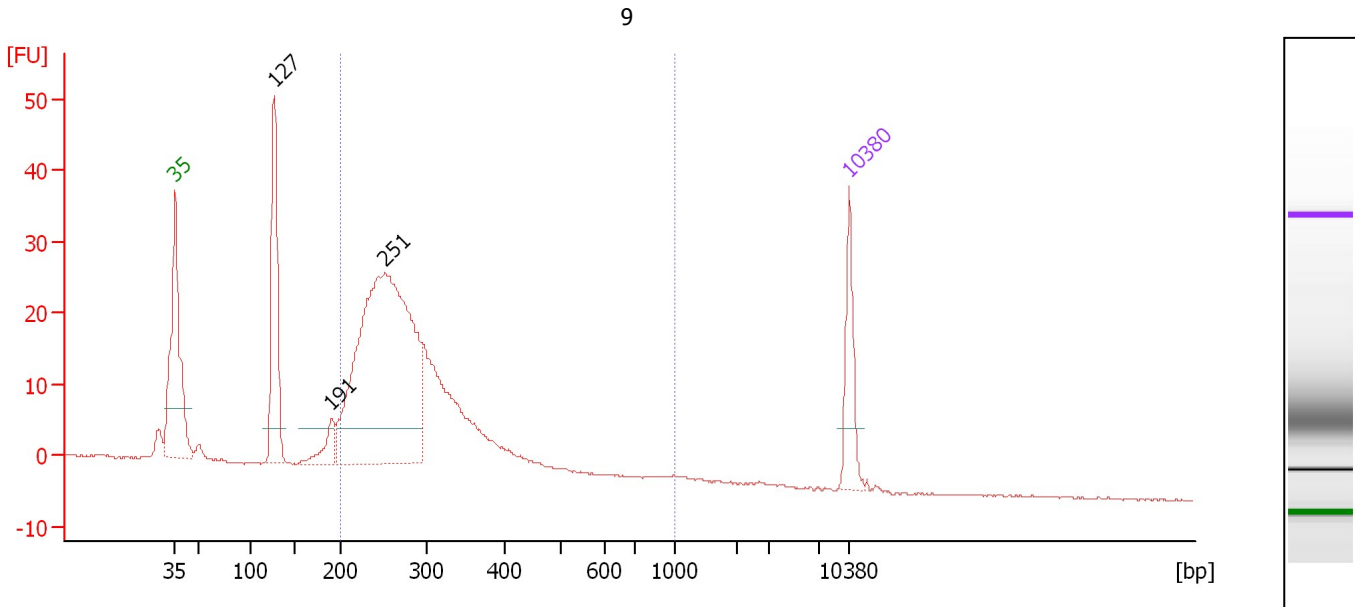
**Region table for sample 9 : 6**

From [bp]	To [bp]	Average Size [bp]	Corr. Area	Molarity [pmol/l]	Co Conc. [pg/μl]	% of Total	Size distribution in CV [%]
200	1,000	314	854.9	13,652.7	2,634.20	81	27.4

Assay Class: High Sensitivity DNA Assay  
 Data Path: C:\...ents and Settings\Bioanalyzer\2016-02-17\2016-02-17\_004.xad

Created: 2/17/2016 2:56:14 PM  
 Modified: 2/17/2016 3:37:17 PM

**Electropherogram Summary Continued ...**



**Overall Results for sample 10 : 9**

Number of peaks found: 3                      Corr. Area 1: 378.1  
 Noise: 0.1

**Peak table for sample 10 : 9**

Peak	Size [bp]	Conc. [pg/μl]	Molarity [pmol/l]	Observations	Aligned Migration Time [s]
1	35	125.00	5,411.3	Lower Marker	43.00
2	127	315.06	3,766.2		53.30
3	191	54.38	431.9		59.23
4	251	987.79	5,962.3		64.71
5	10,380	75.00	10.9	Upper Marker	113.00

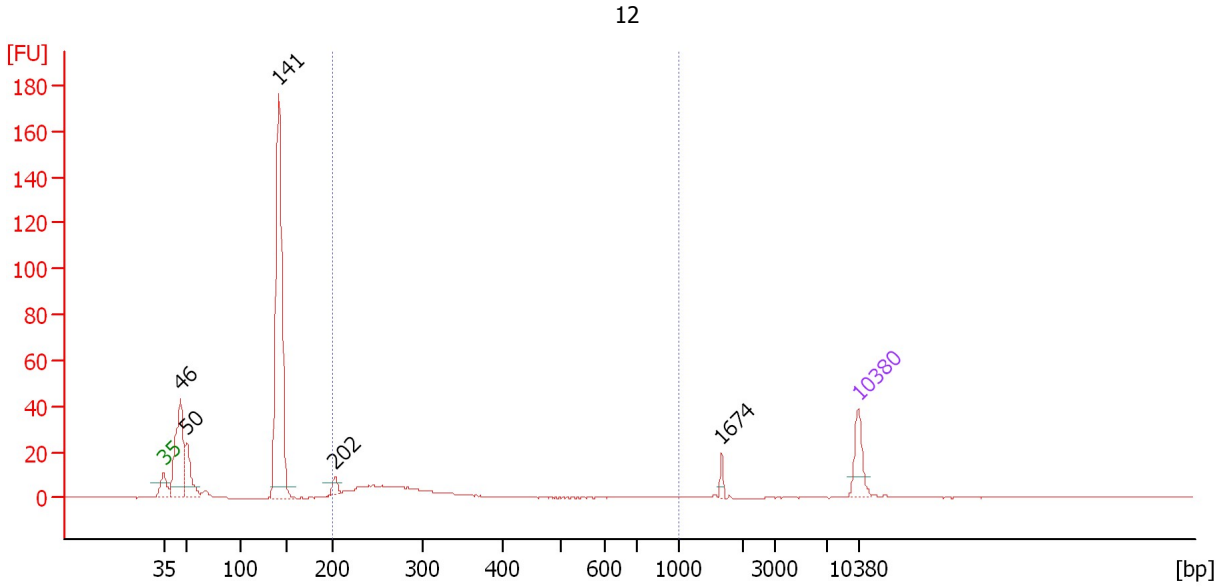
**Region table for sample 10 : 9**

From [bp]	To [bp]	Average Size [bp]	Corr. Area	Molarity [pmol/l]	Co Conc. lor [pg/μl]	% of Total	Size distribution in CV [%]
200	1,000	288	378.1	7,897.1	1,423.24	79	25.9

Assay Class: High Sensitivity DNA Assay  
 Data Path: C:\...ents and Settings\Bioanalyzer\2016-02-17\2016-02-17\_004.xad

Created: 2/17/2016 2:56:14 PM  
 Modified: 2/17/2016 3:37:17 PM

**Electropherogram Summary Continued ...**



**Overall Results for sample 11 : 12**

Number of peaks found: 5                      Corr. Area 1: 79.8  
 Noise: 0.1

**Peak table for sample 11 : 12**

Peak	Size [bp]	Conc. [pg/μl]	Molarity [pmol/l]	Observations	Aligned Migration Time [s]
1	35	125.00	5,411.3	Lower Marker	43.00
2	46	426.62	13,995.1		44.72
3	50	170.85	5,172.6		45.31
4	141	1,108.21	11,930.4		54.60
5	202	30.81	231.2		60.24
6	1,674	16.71	15.1		99.25
7	10,380	75.00	10.9	Upper Marker	113.00

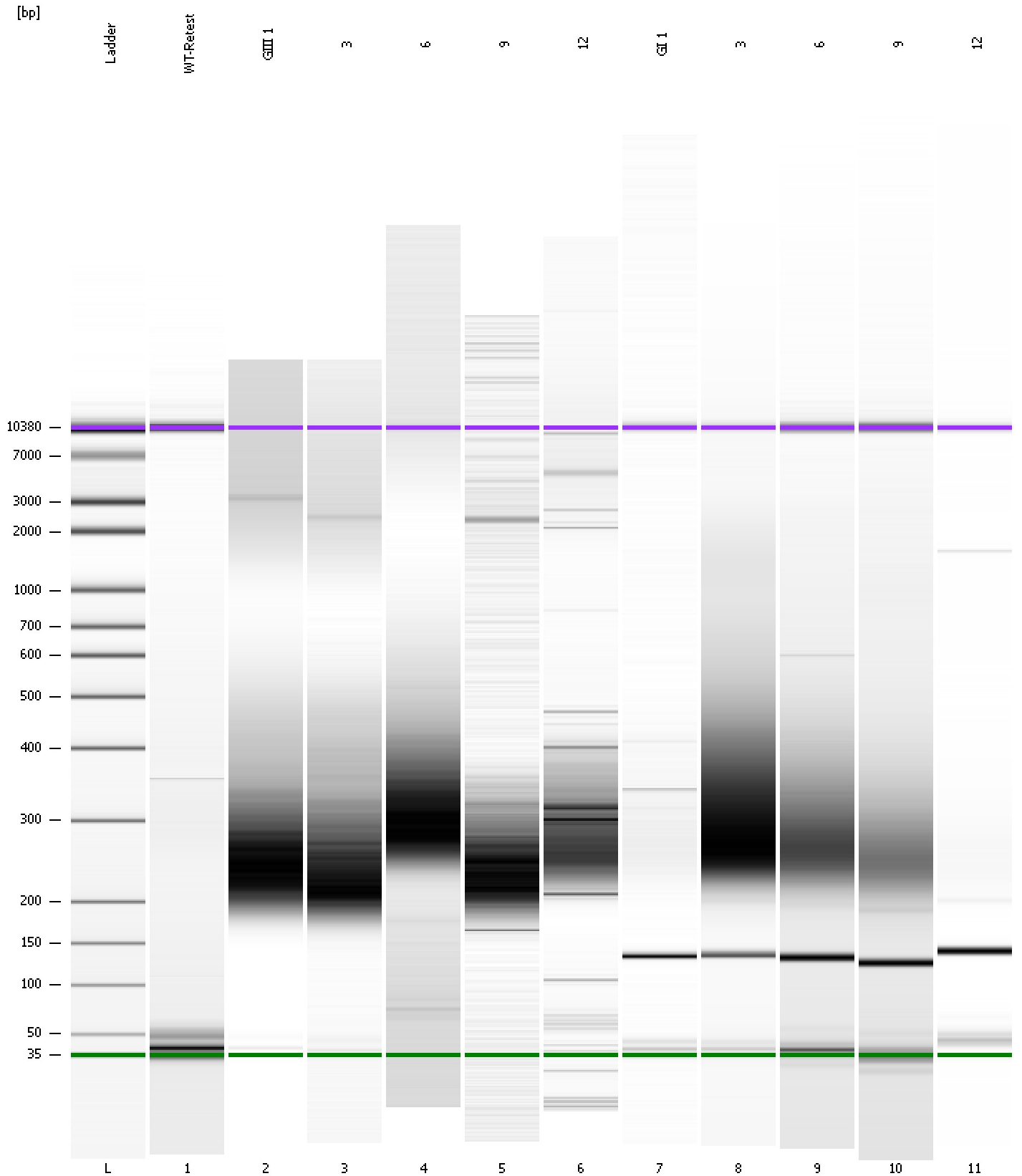
**Region table for sample 11 : 12**

From [bp]	To [bp]	Average Size [bp]	Corr. Area	Molarity [pmol/l]	Co Conc. lor [pg/μl]	% of Total	Size distribution in CV [%]
200	1,000	289	79.8	1,785.2	312.66	18	39.4

Assay Class: High Sensitivity DNA Assay  
Data Path: C:\...ents and Settings\Bioanalyzer\2016-02-17\2016-02-17\_004.xad

Created: 2/17/2016 2:56:14 PM  
Modified: 2/17/2016 3:37:17 PM

**Gel Image**



Assay Class: High Sensitivity DNA Assay  
 Data Path: C:\...ents and Settings\Bioanalyzer\2016-02-17\2016-02-17\_004.xad

Created: 2/17/2016 2:56:14 PM  
 Modified: 2/17/2016 3:37:17 PM

**Run Logbook**

Description	Number	Source	Category	Sub Category	Time	Time Zone	User	Host
Run ended on port 1 (Number of wells acquired: 12)		Instrument	Run		2/17/2016 3:36:42 PM	(GMT --08:00) Pacific Standard Time	UC Davis	D8XSMGH1
Run started on port 1 (File: C:\Documents and Settings\Bioanalyzer\2016-02-17\2016-02-17_004.xad)		Instrument	Run		2/17/2016 2:56:20 PM	(GMT --08:00) Pacific Standard Time	UC Davis	D8XSMGH1
Product Number : G2938B		Instrument	Run		2/17/2016 2:56:20 PM	(GMT --08:00) Pacific Standard Time	UC Davis	D8XSMGH1
Name :		Instrument	Run		2/17/2016 2:56:20 PM	(GMT --08:00) Pacific Standard Time	UC Davis	D8XSMGH1
Vendor : Agilent Technologies		Instrument	Run		2/17/2016 2:56:20 PM	(GMT --08:00) Pacific Standard Time	UC Davis	D8XSMGH1
Serial# : DE13701086		Instrument	Run		2/17/2016 2:56:20 PM	(GMT --08:00) Pacific Standard Time	UC Davis	D8XSMGH1
Firmware : C.01.069		Instrument	Run		2/17/2016 2:56:20 PM	(GMT --08:00) Pacific Standard Time	UC Davis	D8XSMGH1
Cartridge : Electrode		Instrument	Run		2/17/2016 2:56:20 PM	(GMT --08:00) Pacific Standard Time	UC Davis	D8XSMGH1