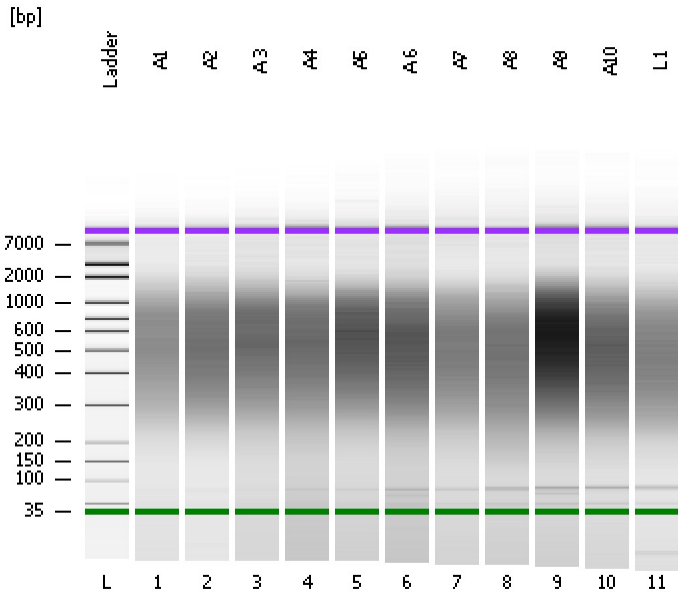


Assay Class: High Sensitivity DNA Assay
Data Path: C:\...ents and Settings\Bioanalyzer\2016-02-23\2016-02-23_004.xad

Created: 2/23/2016 4:14:23 PM
Modified: 2/23/2016 4:55:43 PM

Electrophoresis File Run Summary



Instrument Information:

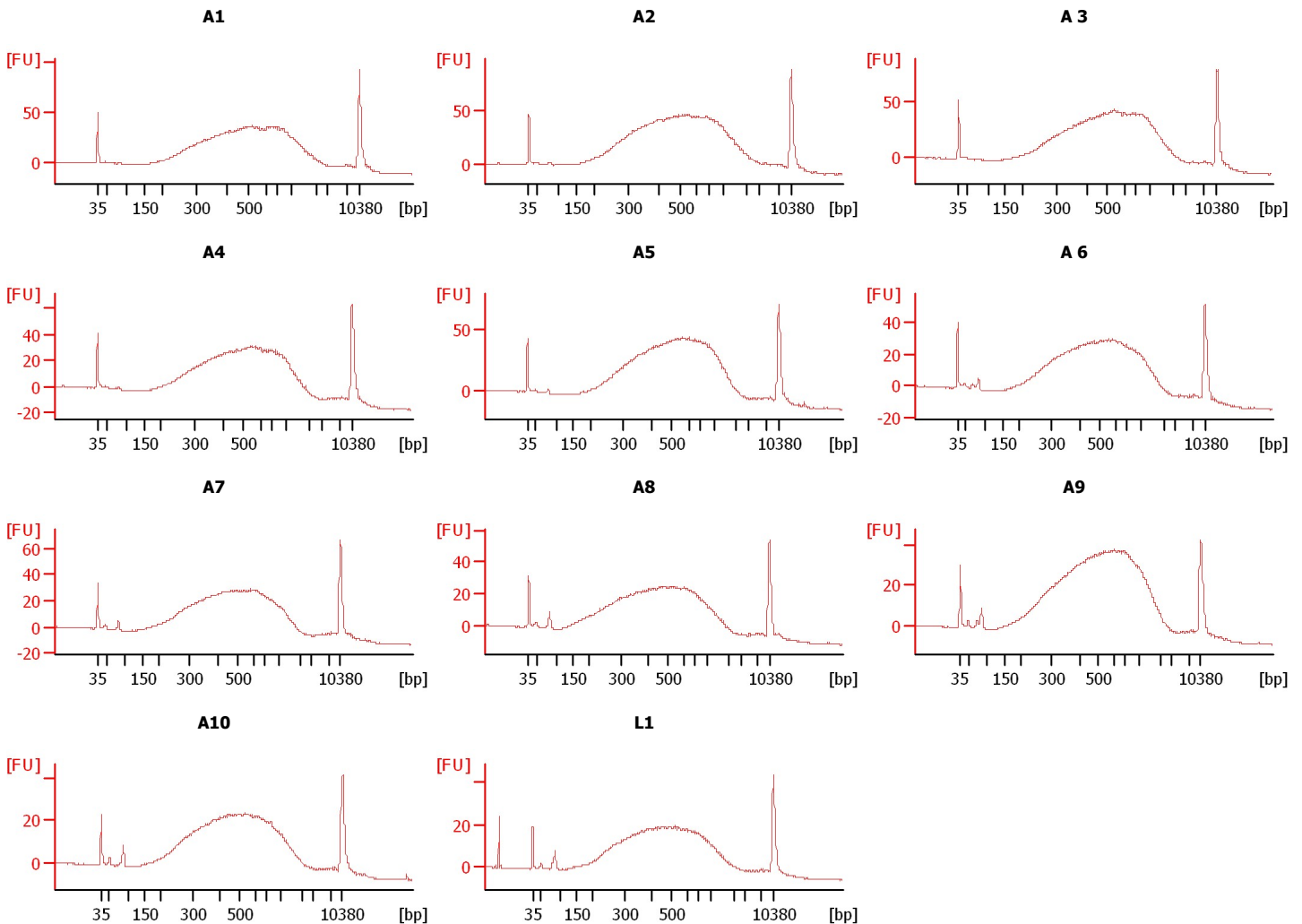
Instrument Name: DE13701086 Firmware: C.01.069
Serial#: DE13701086 Type: G2938B

Assay Information:

Assay Origin Path: C:\Program Files\Agilent\2100 bioanalyzer\2100 expert\assays\dsDNA\High Sensitivity DNA.xsy
Assay Class: High Sensitivity DNA Assay
Version: 1.03
Assay Comments: Copyright © 2003-2010 Agilent Technologies

Chip Information:

Chip Lot #:
Reagent Kit Lot #:
Chip Comments:



Assay Class: High Sensitivity DNA Assay
 Data Path: C:\...ents and Settings\Bioanalyzer\2016-02-23\2016-02-23_004.xad

Created: 2/23/2016 4:14:23 PM
 Modified: 2/23/2016 4:55:43 PM

Electrophoresis File Run Summary (Chip Summary)

Sample Name	Sample Comment	Rest. Digest	Status	Observation	Result Label	Result Color
A1		<input type="checkbox"/>	✓			
A2		<input type="checkbox"/>	✓			
A 3		<input type="checkbox"/>	✓			
A4		<input type="checkbox"/>	✓			
A5		<input type="checkbox"/>	✓			
A 6		<input type="checkbox"/>	✓			
A7		<input type="checkbox"/>	✓			
A8		<input type="checkbox"/>	✓			
A9		<input type="checkbox"/>	✓			
A10		<input type="checkbox"/>	✓			
L1		<input type="checkbox"/>	✓			
Ladder		<input type="checkbox"/>	✓			

Chip Lot #

Reagent Kit Lot #

Chip Comments :

Assay Class: High Sensitivity DNA Assay
Data Path: C:\...ents and Settings\Bioanalyzer\2016-02-23\2016-02-23_004.xad

Created: 2/23/2016 4:14:23 PM
Modified: 2/23/2016 4:55:43 PM

Electrophoresis Assay Details

General Analysis Settings

Number of Available Sample and Ladder Wells (Max.) : 12
Minimum Visible Range [s] : 32
Maximum Visible Range [s] : 138
Start Analysis Time Range [s] : 33
End Analysis Time Range [s] : 137.5
Ladder Concentration [pg/μl] : 1950
Uses Standard Area for Ladder Fragments
Lower Marker Concentration [pg/μl] : 125
Upper Marker Concentration [pg/μl] : 75
Used Upper Marker for Quantitation
Standard Curve Fit is Point to Point
Show Data Aligned to Lower and Upper Marker

Integrator Settings

Integration Start Time [s] : 33.05
Integration End Time [s] : 137
Slope Threshold : 0.8
Height Threshold [FU] : 5
Area Threshold : 0.1
Width Threshold [s] : 0.6
Baseline Plateau [s] : 0.5

Filter Settings

Filter Width [s] : 0.5
Polynomial Order : 4

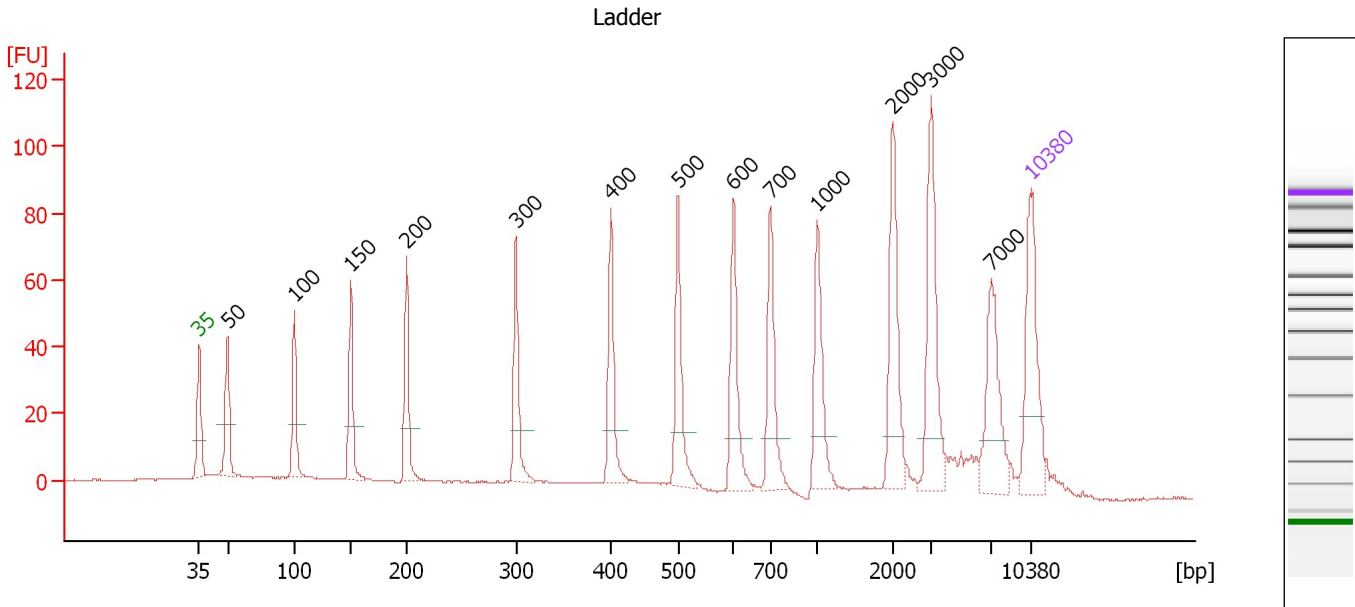
Ladder

Ladder Peak	Size	Area
1	35	160
2	50	210
3	100	208
4	150	221
5	200	242
6	300	270
7	400	305
8	500	306
9	600	336
10	700	321
11	1000	366
12	2000	413
13	3000	411
14	7000	400
15	10380	214

Assay Class: High Sensitivity DNA Assay
 Data Path: C:\...ents and Settings\Bioanalyzer\2016-02-23\2016-02-23_004.xad

Created: 2/23/2016 4:14:23 PM
 Modified: 2/23/2016 4:55:43 PM

Electropherogram Summary



Overall Results for Ladder

Noise: 0.2

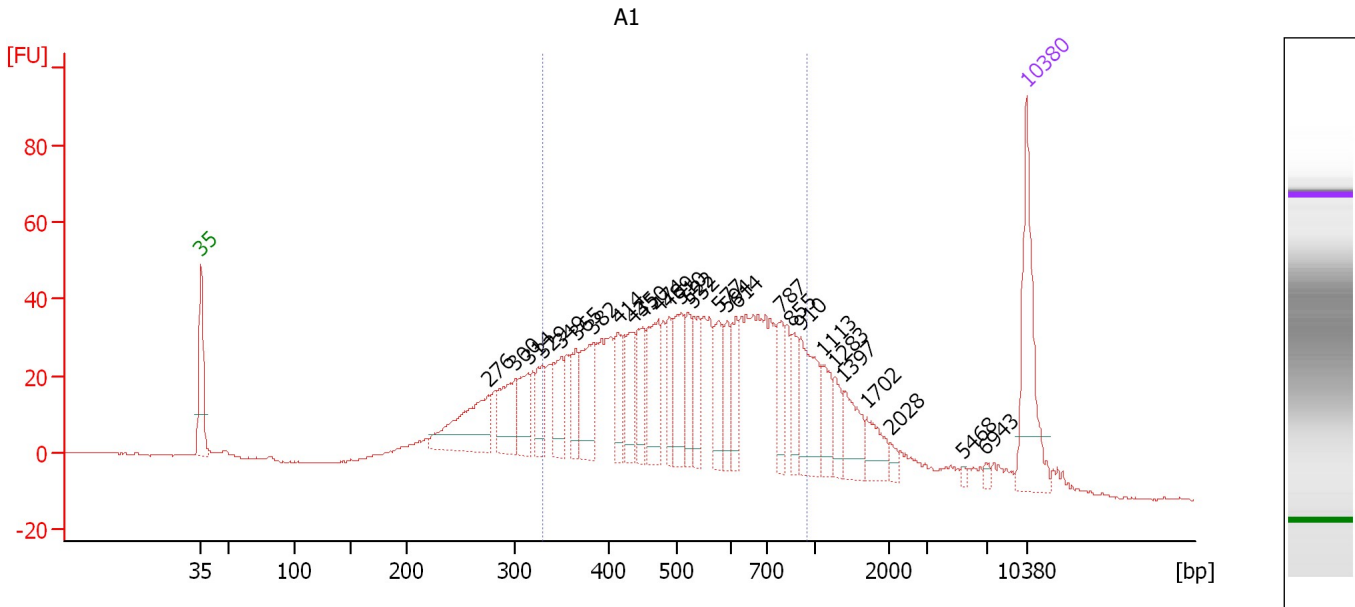
Peak table for Ladder

Peak	Size [bp]	Conc. [pg/μl]	Molarity [pmol/l]	Observations	Aligned Migration Time [s]
1	35	125.00	5,411.3	Lower Marker	43.00
2	50	150.00	4,545.5	Ladder Peak	45.38
3	100	150.00	2,272.7	Ladder Peak	50.99
4	150	150.00	1,515.2	Ladder Peak	55.74
5	200	150.00	1,136.4	Ladder Peak	60.46
6	300	150.00	757.6	Ladder Peak	69.65
7	400	150.00	568.2	Ladder Peak	77.64
8	500	150.00	454.5	Ladder Peak	83.29
9	600	150.00	378.8	Ladder Peak	87.96
10	700	150.00	324.7	Ladder Peak	91.06
11	1,000	150.00	227.3	Ladder Peak	95.01
12	2,000	150.00	113.6	Ladder Peak	101.38
13	3,000	150.00	75.8	Ladder Peak	104.61
14	7,000	150.00	32.5	Ladder Peak	109.63
15	10,380	75.00	10.9	Upper Marker	113.00

Assay Class: High Sensitivity DNA Assay
 Data Path: C:\...ents and Settings\Bioanalyzer\2016-02-23\2016-02-23_004.xad

Created: 2/23/2016 4:14:23 PM
 Modified: 2/23/2016 4:55:43 PM

Electropherogram Summary Continued ...



Overall Results for sample 1 : A1

Number of peaks found: 28 Corr. Area 1: 1,054.4
 Noise: 0.2

Peak table for sample 1 : A1

Peak	Size [bp]	Conc. [pg/μl]	Molarity [pmol/l]	Observations	Aligned Migration Time [s]
1	35	125.00	5,411.3	Lower Marker	43.00
2	276	94.67	520.3		67.42
3	300	56.64	286.3		69.63
4	314	40.79	196.9		70.76
5	329	34.55	159.0		71.99
6	349	43.99	191.0		73.57
7	365	34.32	142.5		74.83
8	382	57.32	227.1		76.24
9	414	33.12	121.3		78.41
10	435	44.17	153.8		79.63
11	450	40.83	137.6		80.44
12	474	62.44	199.8		81.80
13	489	31.21	96.8		82.66
14	510	53.06	157.7		83.74
15	522	31.00	90.0		84.33
16	532	34.73	98.9		84.78
17	577	39.86	104.6		86.91
18	594	26.64	68.0		87.68
19	614	33.40	82.4		88.40
20	787	30.26	58.3		92.20
21	855	25.12	44.5		93.10
22	910	62.42	103.9		93.83
23	1,113	25.98	35.4		95.73
24	1,283	18.92	22.3		96.81
25	1,397	34.00	36.9		97.53

Assay Class: High Sensitivity DNA Assay
 Data Path: C:\...ents and Settings\Bioanalyzer\2016-02-23\2016-02-23_004.xad

Created: 2/23/2016 4:14:23 PM
 Modified: 2/23/2016 4:55:43 PM

Electropherogram Summary Continued ...

... Peak table for sample 1 : A1

Peak	Size [bp]	Conc. [pg/μl]	Molarity [pmol/l]	Observations	Aligned Migration Time [s]
26	1,702	23.04	20.5		99.48
27	2,028	5.43	4.1		101.47
28	5,468	2.35	0.7		107.71
29	6,943	3.50	0.8		109.56
30	10,380	75.00	10.9	Upper Marker	113.00

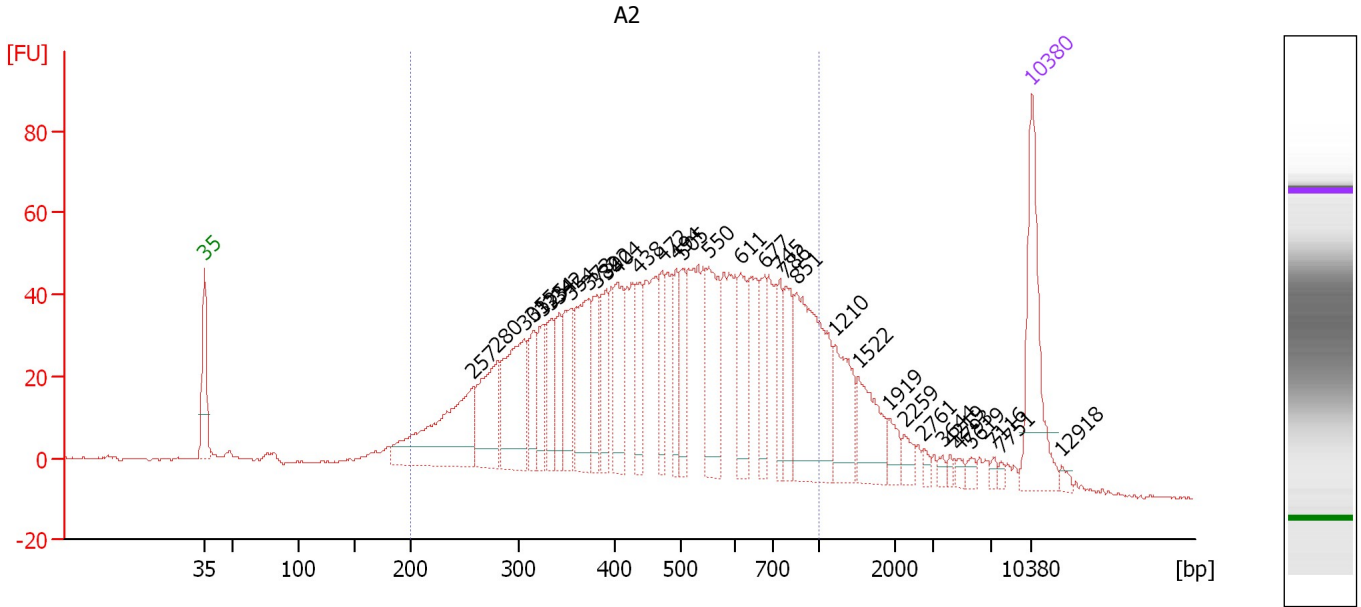
Region table for sample 1 : A1

From [bp]	To [bp]	Average Size [bp]	Corr. Area	Molarity [pmol/l]	Co Conc. lor [pg/μl]	% of Total	Size distribution in CV [%]
329	959	544	1,054.4	3,555.2	1,150.13	65	28.7

Assay Class: High Sensitivity DNA Assay
 Data Path: C:\...ents and Settings\Bioanalyzer\2016-02-23\2016-02-23_004.xad

Created: 2/23/2016 4:14:23 PM
 Modified: 2/23/2016 4:55:43 PM

Electropherogram Summary Continued ...



Overall Results for sample 2 : A2

Number of peaks found: 34 Corr. Area 1: 1,725.4
 Noise: 0.3

Peak table for sample 2 : A2

Peak	Size [bp]	Conc. [pg/μl]	Molarity [pmol/l]	Observations	Aligned Migration Time [s]
1	35	125.00	5,411.3	Lower Marker	43.00
2	257	148.33	874.4		65.70
3	280	87.14	472.2		67.78
4	305	110.79	549.8		70.08
5	315	42.62	205.1		70.85
6	325	38.57	179.7		71.66
7	334	39.71	180.4		72.34
8	342	37.45	165.9		73.01
9	354	56.71	242.4		74.01
10	373	84.00	341.6		75.45
11	382	38.78	154.0		76.17
12	392	44.45	171.7		77.03
13	404	56.69	212.4		77.89
14	438	42.13	145.8		79.78
15	472	40.41	129.7		81.72
16	494	37.33	114.6		82.94
17	505	37.27	111.8		83.53
18	550	77.13	212.3		85.65
19	611	46.40	115.0		88.31
20	677	34.39	77.0		90.34
21	745	30.12	61.3		91.65
22	786	39.77	76.6		92.19
23	851	135.19	240.6		93.05
24	1,210	50.91	63.7		96.35
25	1,522	46.98	46.8		98.33

Assay Class: High Sensitivity DNA Assay
 Data Path: C:\...ents and Settings\Bioanalyzer\2016-02-23\2016-02-23_004.xad

Created: 2/23/2016 4:14:23 PM
 Modified: 2/23/2016 4:55:43 PM

Electropherogram Summary Continued ...

... Peak table for sample 2 : A2

Peak	Size [bp]	Conc. [pg/μl]	Molarity [pmol/l]	Observations	Aligned Migration Time [s]
26	1,919	13.08	10.3		100.86
27	2,259	9.62	6.5		102.21
28	2,761	4.49	2.5		103.84
29	3,644	3.99	1.7		105.42
30	4,219	3.33	1.2		106.14
31	4,793	4.86	1.5		106.86
32	5,619	4.40	1.2		107.90
33	7,116	3.45	0.7		109.75
34	7,751	2.66	0.5		110.38
35	10,380	75.00	10.9	Upper Marker	113.00
36	12,918	0.00	0.0		115.53

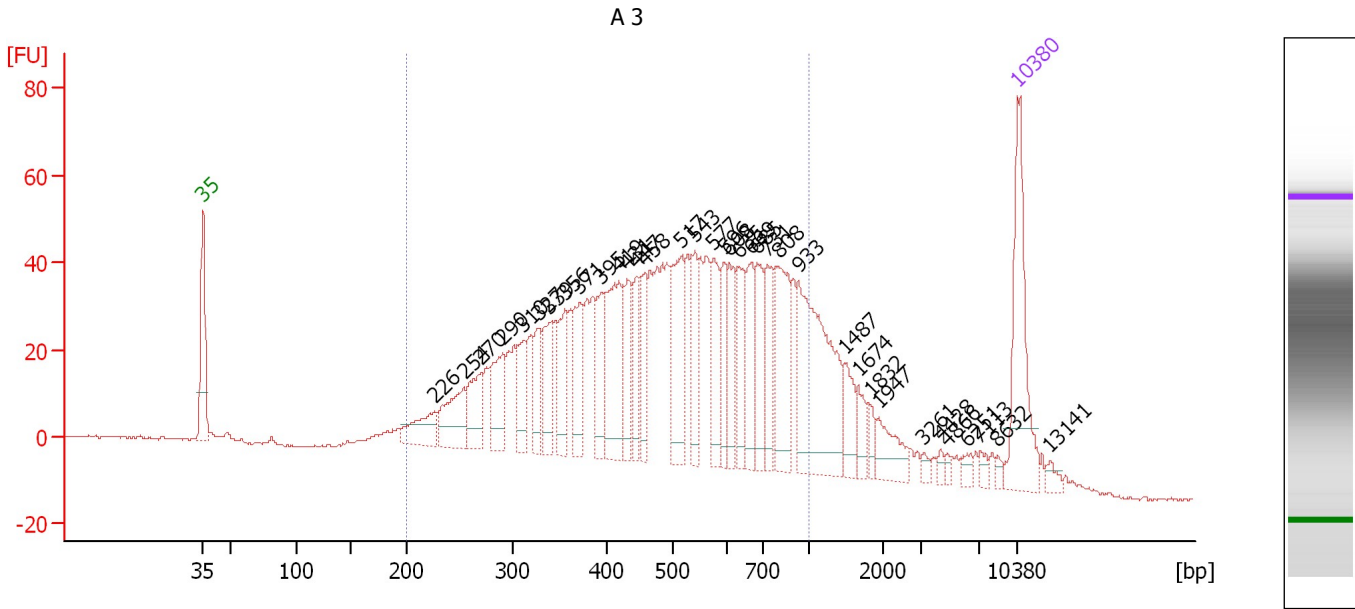
Region table for sample 2 : A2

From [bp]	To [bp]	Average Size [bp]	Corr. Area	Molarity [pmol/l]	Co Conc. lor [pg/μl]	% of Total	Size distribution in CV [%]
200	1,000	496	1,725.4	6,733.9	1,812.07	82	37.0

Assay Class: High Sensitivity DNA Assay
 Data Path: C:\...ents and Settings\Bioanalyzer\2016-02-23\2016-02-23_004.xad

Created: 2/23/2016 4:14:23 PM
 Modified: 2/23/2016 4:55:43 PM

Electropherogram Summary Continued ...



Overall Results for sample 3 : A 3

Number of peaks found: 36 Corr. Area 1: 1,545.4
 Noise: 0.4

Peak table for sample 3 : A 3

Peak	Size [bp]	Conc. [pg/μl]	Molarity [pmol/l]	Observations	Aligned Migration Time [s]
1	35	125.00	5,411.3	Lower Marker	43.00
2	226	37.56	251.4		62.88
3	254	54.66	326.4		65.40
4	270	40.05	224.6		66.91
5	290	49.78	260.0		68.75
6	310	34.84	170.1		70.49
7	327	33.16	153.6		71.82
8	339	42.80	191.2		72.78
9	356	41.61	177.2		74.11
10	371	48.63	198.5		75.34
11	395	40.06	153.7		77.22
12	419	87.40	316.4		78.69
13	431	39.43	138.5		79.42
14	447	37.27	126.4		80.29
15	458	35.06	115.9		80.93
16	517	72.11	211.3		84.09
17	543	36.05	100.7		85.28
18	577	45.84	120.4		86.89
19	596	32.05	81.5		87.76
20	608	38.82	96.7		88.22
21	635	41.37	98.7		89.04
22	669	42.24	95.7		90.09
23	685	42.46	93.9		90.60
24	731	36.75	76.2		91.47
25	808	73.71	138.3		92.48

Assay Class: High Sensitivity DNA Assay
 Data Path: C:\...ents and Settings\Bioanalyzer\2016-02-23\2016-02-23_004.xad

Created: 2/23/2016 4:14:23 PM
 Modified: 2/23/2016 4:55:43 PM

Electropherogram Summary Continued ...

... Peak table for sample 3 : A3

Peak	Size [bp]	Conc. [pg/μl]	Molarity [pmol/l]	Observations	Aligned Migration Time [s]
26	933	141.02	229.0		94.13
27	1,487	23.12	23.5		98.11
28	1,674	15.65	14.2		99.30
29	1,832	7.80	6.5		100.31
30	1,947	24.18	18.8		101.04
31	3,261	4.07	1.9		104.94
32	4,428	3.51	1.2		106.40
33	4,866	3.15	1.0		106.95
34	6,251	5.95	1.4		108.69
35	7,113	5.12	1.1		109.75
36	8,632	3.45	0.6		111.26
37	10,380	75.00	10.9	Upper Marker	113.00
38	13,141	0.00	0.0		115.75

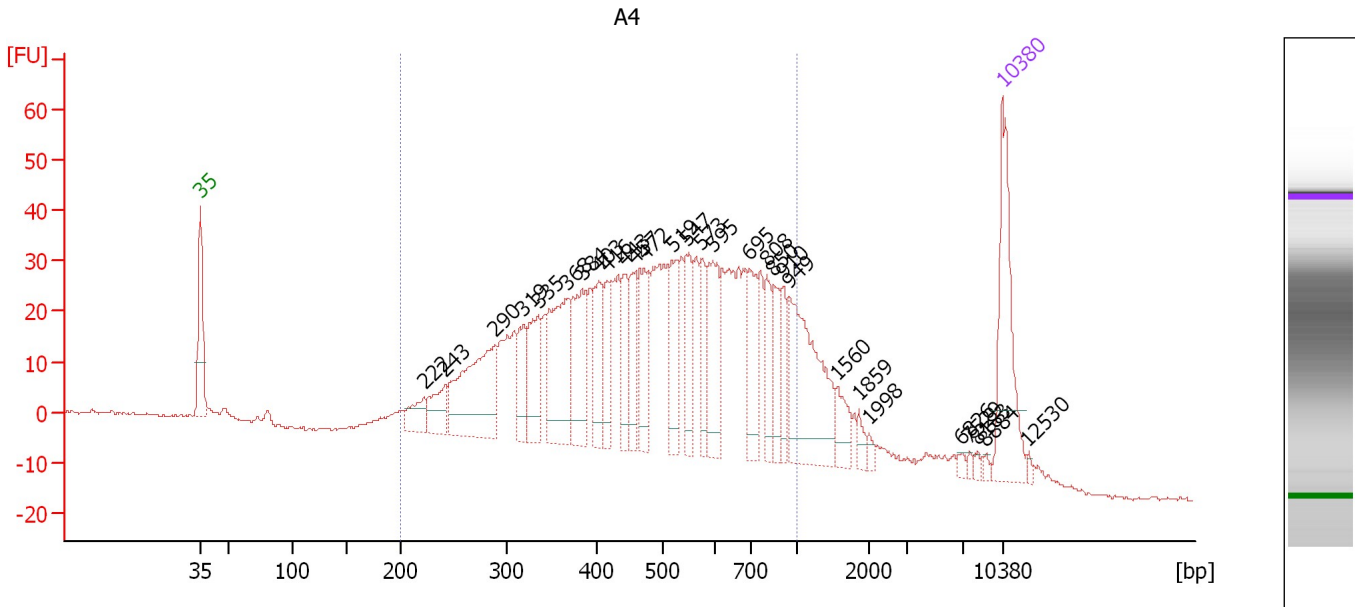
Region table for sample 3 : A3

From [bp]	To [bp]	Average Size [bp]	Corr. Area	Molarity [pmol/l]	Co Conc. lor [pg/μl]	% of Total	Size distribution in CV [%]
200	1,000	508	1,545.4	6,176.9	1,703.13	81	36.6

Assay Class: High Sensitivity DNA Assay
 Data Path: C:\...ents and Settings\Bioanalyzer\2016-02-23\2016-02-23_004.xad

Created: 2/23/2016 4:14:23 PM
 Modified: 2/23/2016 4:55:43 PM

Electropherogram Summary Continued ...



Overall Results for sample 4 : A4

Number of peaks found: 29 Corr. Area 1: 1,239.9
 Noise: 0.3

Peak table for sample 4 : A4

Peak	Size [bp]	Conc. [pg/μl]	Molarity [pmol/l]	Observations	Aligned Migration Time [s]
1	35	125.00	5,411.3	Lower Marker	43.00
2	222	26.05	177.6		62.50
3	243	35.51	221.4		64.41
4	290	133.14	696.7		68.69
5	319	37.88	179.7		71.20
6	335	58.60	264.9		72.46
7	368	103.37	425.9		75.07
8	384	70.12	277.0		76.32
9	403	47.76	179.5		77.81
10	416	32.84	119.5		78.56
11	443	33.82	115.8		80.05
12	457	39.23	130.0		80.89
13	472	55.20	177.1		81.72
14	519	48.08	140.3		84.19
15	547	44.88	124.3		85.49
16	573	32.49	85.9		86.70
17	595	59.72	152.1		87.73
18	695	49.10	107.1		90.89
19	808	29.39	55.1		92.47
20	850	28.02	49.9		93.03
21	910	24.67	41.1		93.82
22	949	117.75	188.0		94.34
23	1,560	19.90	19.3		98.57
24	1,859	7.54	6.1		100.48
25	1,998	4.26	3.2		101.36

Assay Class: High Sensitivity DNA Assay
 Data Path: C:\...ents and Settings\Bioanalyzer\2016-02-23\2016-02-23_004.xad

Created: 2/23/2016 4:14:23 PM
 Modified: 2/23/2016 4:55:43 PM

Electropherogram Summary Continued ...

... Peak table for sample 4 : A4

Peak	Size [bp]	Conc. [pg/μl]	Molarity [pmol/l]	Observations	Aligned Migration Time [s]
26	6,826	3.66	0.8		109.42
27	7,529	2.54	0.5		110.16
28	8,183	2.54	0.5		110.81
29	8,884	2.54	0.4		111.51
30	10,380	75.00	10.9	Upper Marker	113.00
31	12,530	0.00	0.0		115.14

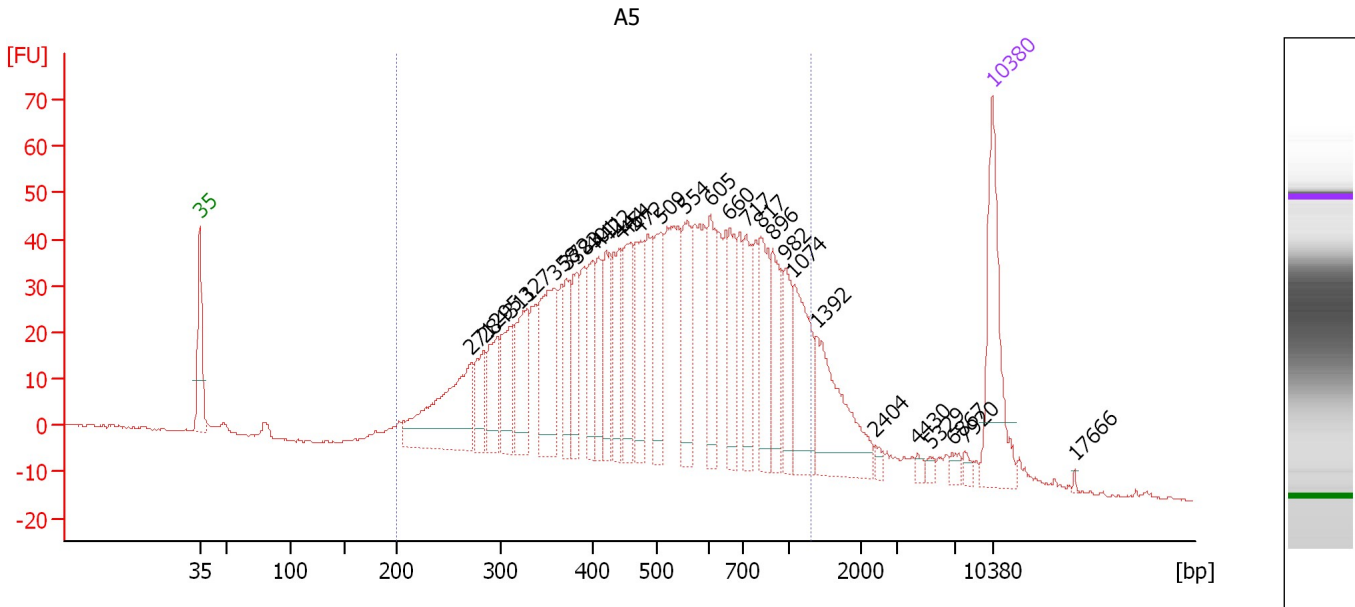
Region table for sample 4 : A4

From [bp]	To [bp]	Average Size [bp]	Corr. Area	Molarity [pmol/l]	Co Conc. lor [pg/μl]	% of Total	Size distribution in CV [%]
200	1,000	506	1,239.9	5,807.4	1,597.62	83	36.4

Assay Class: High Sensitivity DNA Assay
 Data Path: C:\...ents and Settings\Bioanalyzer\2016-02-23\2016-02-23_004.xad

Created: 2/23/2016 4:14:23 PM
 Modified: 2/23/2016 4:55:43 PM

Electropherogram Summary Continued ...



Overall Results for sample 5 : A5

Number of peaks found: 30 Corr. Area 1: 1,638.4
 Noise: 0.3

Peak table for sample 5 : A5

Peak	Size [bp]	Conc. [pg/μl]	Molarity [pmol/l]	Observations	Aligned Migration Time [s]
1	35	125.00	5,411.3	Lower Marker	43.00
2	271	140.02	783.1		66.98
3	284	41.43	221.3		68.15
4	295	50.64	259.7		69.24
5	311	52.29	255.0		70.51
6	327	68.83	318.7		71.83
7	358	97.09	410.4		74.33
8	372	36.78	149.8		75.41
9	383	45.63	180.7		76.26
10	401	44.35	167.8		77.67
11	411	38.97	143.8		78.24
12	422	39.49	141.7		78.90
13	444	51.64	176.3		80.12
14	454	59.57	198.9		80.69
15	472	59.74	191.7		81.72
16	509	60.18	179.2		83.70
17	554	61.99	169.5		85.82
18	605	58.51	146.4		88.13
19	660	48.35	111.0		89.82
20	717	49.73	105.1		91.28
21	817	58.81	109.0		92.60
22	896	46.05	77.9		93.64
23	982	36.55	56.4		94.77
24	1,074	65.54	92.5		95.48
25	1,392	82.65	90.0		97.50

Assay Class: High Sensitivity DNA Assay
 Data Path: C:\...ents and Settings\Bioanalyzer\2016-02-23\2016-02-23_004.xad

Created: 2/23/2016 4:14:23 PM
 Modified: 2/23/2016 4:55:43 PM

Electropherogram Summary Continued ...

... Peak table for sample 5 : A5

Peak	Size [bp]	Conc. [pg/μl]	Molarity [pmol/l]	Observations	Aligned Migration Time [s]
26	2,404	4.77	3.0		102.68
27	4,430	3.64	1.2		106.41
28	5,329	4.02	1.1		107.54
29	6,867	5.60	1.2		109.47
30	7,920	4.59	0.9		110.55
31	10,380	75.00	10.9	Upper Marker	113.00
32	17,666	0.00	0.0		120.25

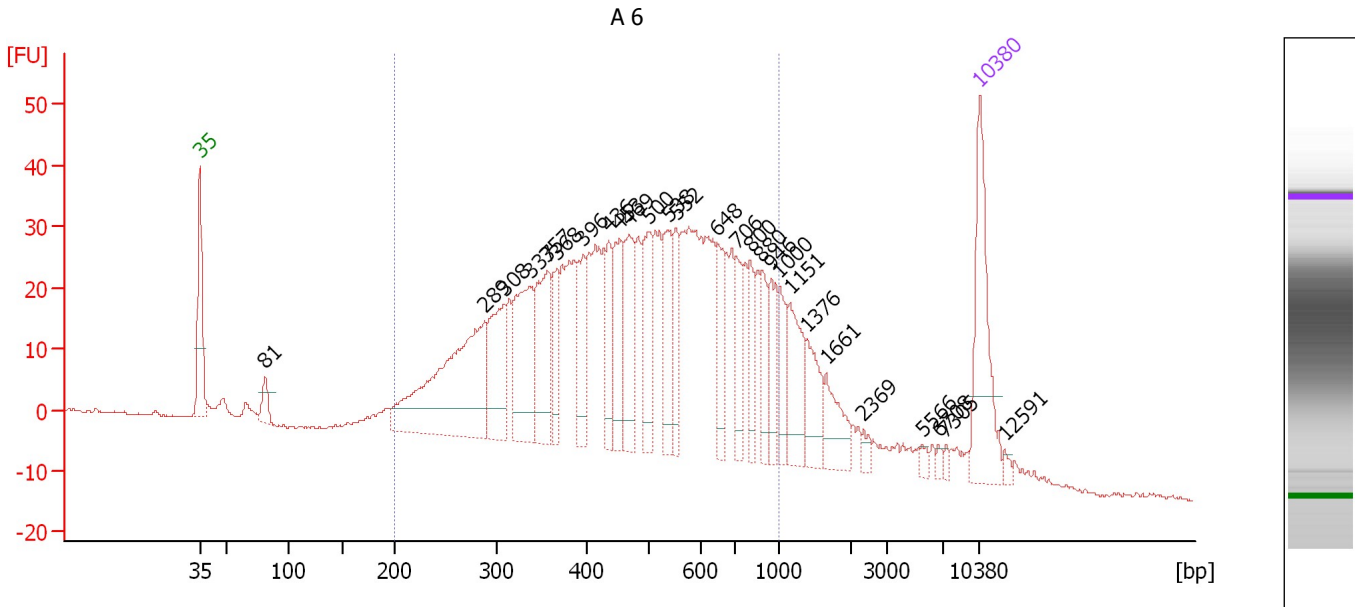
Region table for sample 5 : A5

From [bp]	To [bp]	Average Size [bp]	Corr. Area	Molarity [pmol/l]	Co Conc. lor [pg/μl]	% of Total	Size distribution in CV [%]
200	1,310	549	1,638.4	6,439.2	1,856.54	89	42.2

Assay Class: High Sensitivity DNA Assay
 Data Path: C:\...ents and Settings\Bioanalyzer\2016-02-23\2016-02-23_004.xad

Created: 2/23/2016 4:14:23 PM
 Modified: 2/23/2016 4:55:43 PM

Electropherogram Summary Continued ...



Overall Results for sample 6 : A 6

Number of peaks found: 27 Corr. Area 1: 1,166.3
 Noise: 0.2

Peak table for sample 6 : A 6

Peak	Size [bp]	Conc. [pg/μl]	Molarity [pmol/l]	Observations	Aligned Migration Time [s]
1	35	125.00	5,411.3	Lower Marker	43.00
2	81	20.69	385.8		48.89
3	289	227.42	1,194.3		68.60
4	308	84.09	413.2		70.32
5	337	102.83	462.2		72.62
6	357	83.69	355.3		74.20
7	368	38.75	159.4		75.11
8	396	45.14	172.5		77.35
9	436	38.32	133.1		79.70
10	453	56.39	188.5		80.66
11	469	63.07	204.0		81.52
12	500	59.97	181.8		83.29
13	538	52.30	147.4		85.06
14	552	37.24	102.2		85.73
15	648	35.53	83.0		89.46
16	706	33.68	72.3		91.13
17	800	31.08	58.8		92.38
18	880	28.18	48.5		93.43
19	946	33.65	53.9		94.29
20	1,000	28.97	43.9		95.01
21	1,151	46.19	60.8		95.97
22	1,376	36.45	40.1		97.40
23	1,661	31.31	28.6		99.22
24	2,369	5.82	3.7		102.57
25	5,566	4.04	1.1		107.83

Assay Class: High Sensitivity DNA Assay
 Data Path: C:\...ents and Settings\Bioanalyzer\2016-02-23\2016-02-23_004.xad

Created: 2/23/2016 4:14:23 PM
 Modified: 2/23/2016 4:55:43 PM

Electropherogram Summary Continued ...

... Peak table for sample 6 : A 6

Peak	Size [bp]	Conc. [pg/μl]	Molarity [pmol/l]	Observations	Aligned Migration Time [s]
26	6,708	3.22	0.7		109.27
27	7,305	3.28	0.7		109.94
28	10,380	75.00	10.9	Upper Marker	113.00
29	12,591	0.00	0.0		115.20

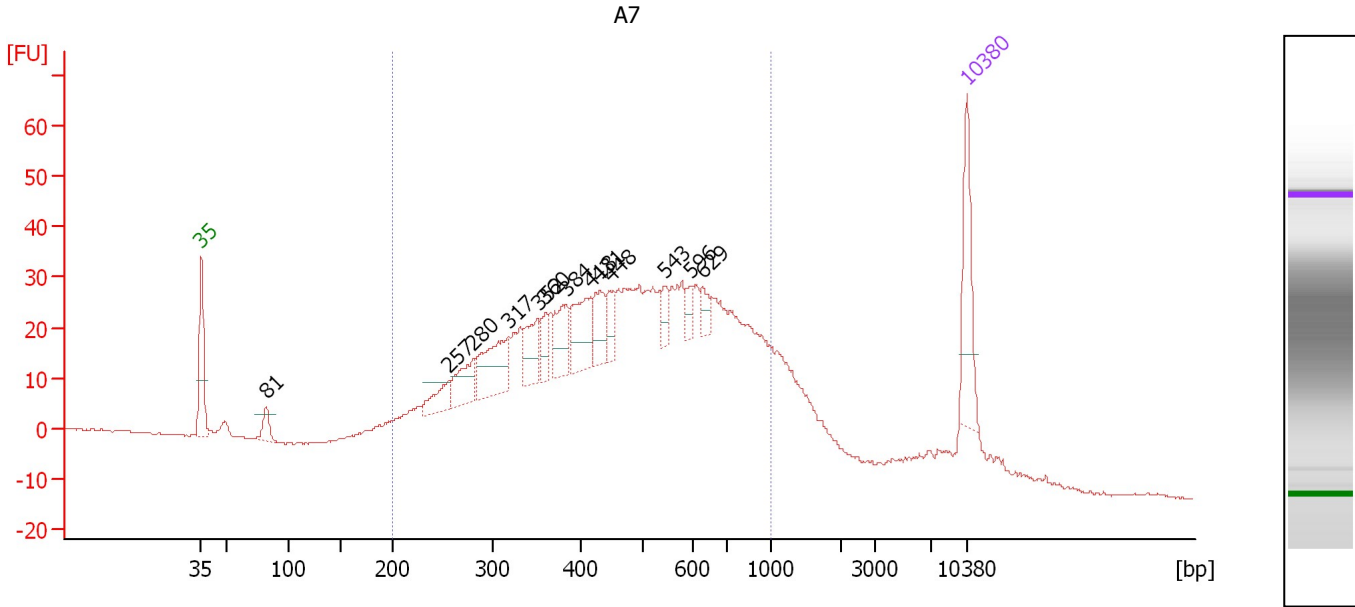
Region table for sample 6 : A 6

From [bp]	To [bp]	Average Size [bp]	Corr. Area	Molarity [pmol/l]	Co Conc. lor [pg/μl]	% of Total	Size distribution in CV [%]
200	1,000	498	1,166.3	6,404.0	1,739.83	83	36.6

Assay Class: High Sensitivity DNA Assay
 Data Path: C:\...ents and Settings\Bioanalyzer\2016-02-23\2016-02-23_004.xad

Created: 2/23/2016 4:14:23 PM
 Modified: 2/23/2016 4:55:43 PM

Electropherogram Summary Continued ...



Overall Results for sample 7 : A7

Number of peaks found: 13 Corr. Area 1: 1,125.0
 Noise: 0.2

Peak table for sample 7 : A7

Peak	Size [bp]	Conc. [pg/μl]	Molarity [pmol/l]	Observations	Aligned Migration Time [s]
1	35	125.00	5,411.3	Lower Marker	43.00
2	81	28.33	527.5		48.90
3	257	37.57	221.8		65.67
4	280	55.80	302.0		67.81
5	317	96.12	459.1		71.03
6	352	51.42	221.3		73.81
7	360	24.62	103.6		74.44
8	384	56.85	224.1		76.39
9	418	75.12	272.6		78.63
10	431	46.07	161.8		79.41
11	448	28.58	96.7		80.34
12	543	18.78	52.4		85.31
13	596	14.59	37.0		87.80
14	629	16.49	39.7		88.87
15	10,380	75.00	10.9	Upper Marker	113.00

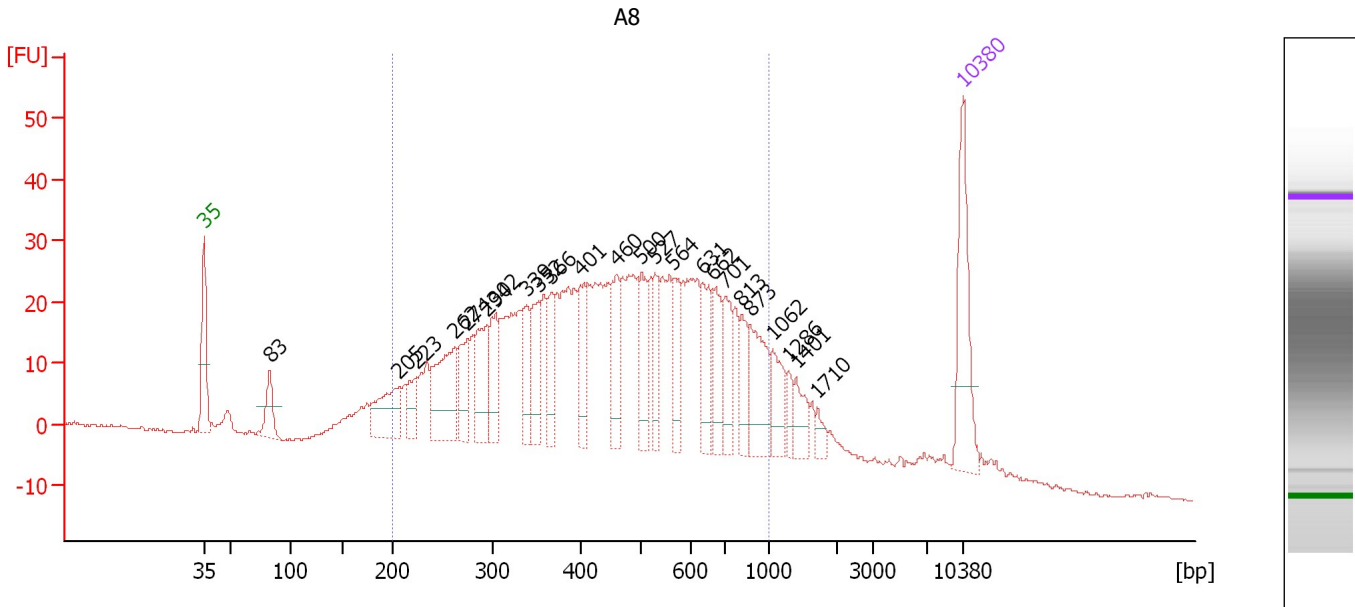
Region table for sample 7 : A7

From [bp]	To [bp]	Average Size [bp]	Corr. Area	Molarity [pmol/l]	Co Conc. lor [pg/μl]	% of Total	Size distribution in CV [%]
200	1,000	492	1,125.0	9,144.2	2,453.90	83	36.6

Assay Class: High Sensitivity DNA Assay
 Data Path: C:\...ents and Settings\Bioanalyzer\2016-02-23\2016-02-23_004.xad

Created: 2/23/2016 4:14:23 PM
 Modified: 2/23/2016 4:55:43 PM

Electropherogram Summary Continued ...



Overall Results for sample 8 : A8

Number of peaks found: 24 Corr. Area 1: 1,026.8
 Noise: 0.2

Peak table for sample 8 : A8

Peak	Size [bp]	Conc. [pg/μl]	Molarity [pmol/l]	Observations	Aligned Migration Time [s]
1	35	125.00	5,411.3	Lower Marker	43.00
2	83	42.13	771.9		49.05
3	205	71.56	528.1		60.94
4	223	29.27	198.9		62.56
5	262	102.19	591.1		66.15
6	274	53.15	293.6		67.28
7	294	68.82	354.7		69.10
8	302	53.92	270.2		69.84
9	339	46.09	206.2		72.74
10	352	48.78	209.9		73.82
11	366	38.82	160.5		74.95
12	401	50.27	189.9		77.71
13	460	50.59	166.5		81.05
14	500	52.94	160.3		83.31
15	527	40.02	115.1		84.54
16	564	37.51	100.9		86.26
17	631	49.31	118.5		88.91
18	662	45.32	103.7		89.90
19	701	43.16	93.2		91.08
20	813	31.94	59.5		92.55
21	873	65.27	113.3		93.34
22	1,062	33.51	47.8		95.40
23	1,286	12.71	15.0		96.83
24	1,401	22.08	23.9		97.56
25	1,710	9.72	8.6		99.53

Assay Class: High Sensitivity DNA Assay
 Data Path: C:\...ents and Settings\Bioanalyzer\2016-02-23\2016-02-23_004.xad

Created: 2/23/2016 4:14:23 PM
 Modified: 2/23/2016 4:55:43 PM

Electropherogram Summary Continued ...

... Peak table for sample 8 : A8

Peak	Size [bp]	Conc. [pg/μl]	Molarity [pmol/l]	Observations	Aligned Migration Time [s]
26	10,380	75.00	10.9	Upper Marker	113.00

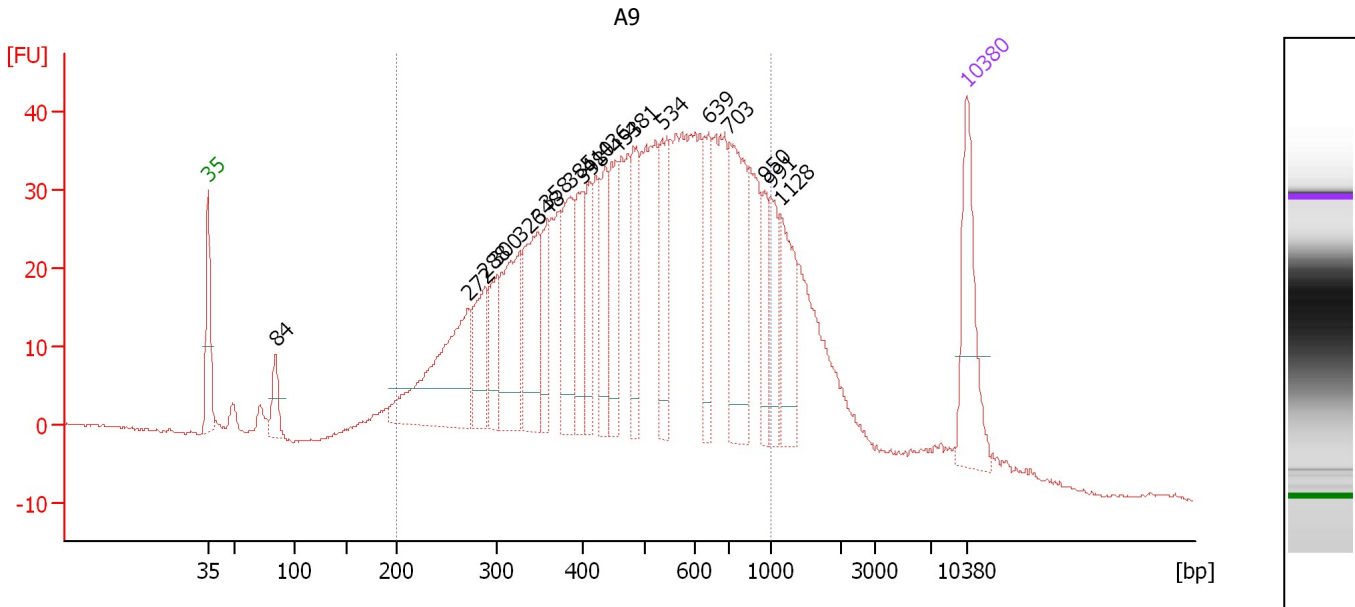
Region table for sample 8 : A8

From [bp]	To [bp]	Average Size [bp]	Corr. Area	Molarity [pmol/l]	Co Conc. lor [pg/μl]	% of Total	Size distribution in CV [%]
200	1,000	478	1,026.8	7,359.8	1,897.93	83	37.8

Assay Class: High Sensitivity DNA Assay
 Data Path: C:\...ents and Settings\Bioanalyzer\2016-02-23\2016-02-23_004.xad

Created: 2/23/2016 4:14:23 PM
 Modified: 2/23/2016 4:55:43 PM

Electropherogram Summary Continued ...



Overall Results for sample 9 : A9

Number of peaks found: 19 Corr. Area 1: 1,270.3
 Noise: 0.3

Peak table for sample 9 : A9

Peak	Size [bp]	Conc. [pg/μl]	Molarity [pmol/l]	Observations	Aligned Migration Time [s]
1	35	125.00	5,411.3	Lower Marker	43.00
2	84	36.09	650.3		49.20
3	272	184.61	1,028.6		67.07
4	288	69.07	363.4		68.55
5	300	51.69	260.8		69.68
6	326	117.73	546.8		71.75
7	348	103.22	449.7		73.47
8	358	49.74	210.4		74.31
9	385	87.51	344.0		76.47
10	398	60.10	228.6		77.51
11	410	50.61	187.1		78.20
12	436	59.74	207.6		79.67
13	453	68.74	229.7		80.66
14	481	66.92	210.7		82.23
15	534	69.13	196.1		84.89
16	639	57.45	136.2		89.17
17	703	127.04	273.9		91.09
18	950	36.11	57.6		94.34
19	991	41.17	63.0		94.88
20	1,128	66.69	89.6		95.82
21	10,380	75.00	10.9	Upper Marker	113.00

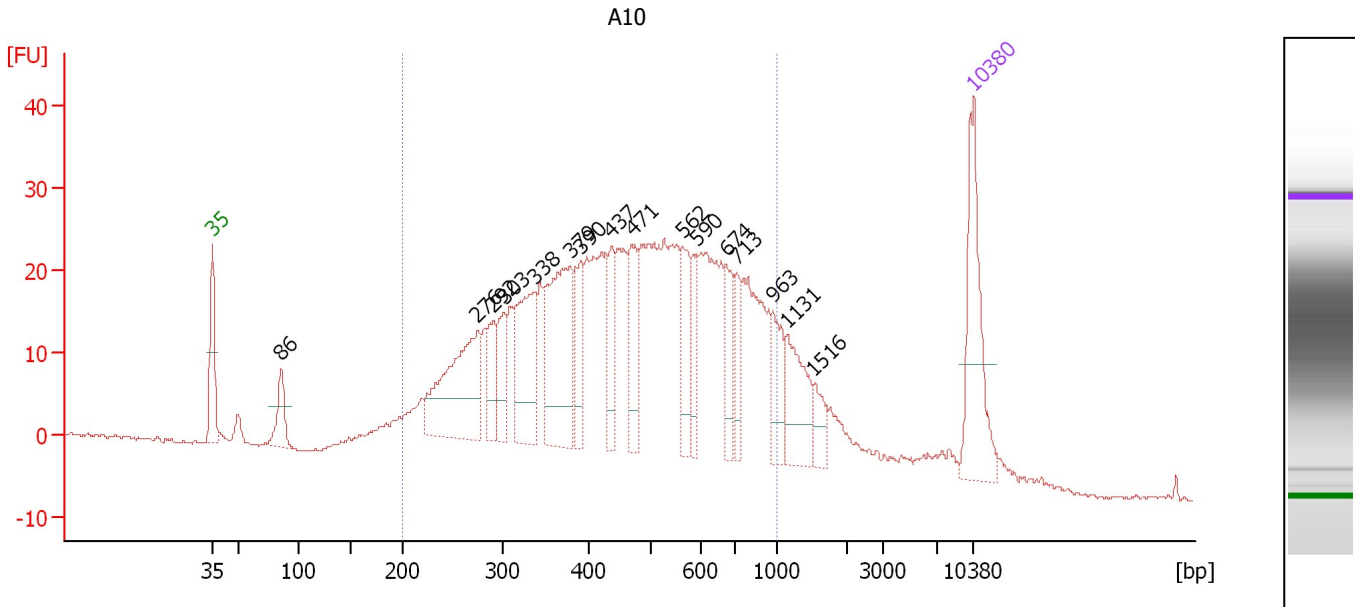
Region table for sample 9 : A9

From [bp]	To [bp]	Average Size [bp]	Corr. Area	Molarity [pmol/l]	Co Conc. [pg/μl]	% of Total	Size distribution in CV [%]
200	1,000	506	1,270.3	8,575.5	2,357.76	82	36.5

Assay Class: High Sensitivity DNA Assay
 Data Path: C:\...ents and Settings\Bioanalyzer\2016-02-23\2016-02-23_004.xad

Created: 2/23/2016 4:14:23 PM
 Modified: 2/23/2016 4:55:43 PM

Electropherogram Summary Continued ...



Overall Results for sample 10 : A10

Number of peaks found: 16 Corr. Area 1: 873.7
 Noise: 0.2

Peak table for sample 10 : A10

Peak	Size [bp]	Conc. [pg/μl]	Molarity [pmol/l]	Observations	Aligned Migration Time [s]
1	35	125.00	5,411.3	Lower Marker	43.00
2	86	38.82	687.1		49.37
3	276	147.30	809.8		67.41
4	292	35.98	187.0		68.88
5	303	39.69	198.7		69.86
6	338	101.64	456.2		72.66
7	379	139.31	557.4		75.94
8	390	44.83	174.0		76.87
9	437	41.28	143.2		79.72
10	471	52.16	168.0		81.63
11	562	44.56	120.1		86.19
12	590	30.26	77.7		87.51
13	674	37.18	83.6		90.25
14	713	27.38	58.1		91.24
15	963	34.66	54.5		94.52
16	1,131	52.79	70.7		95.84
17	1,516	17.41	17.4		98.29
18	10,380	75.00	10.9	Upper Marker	113.00

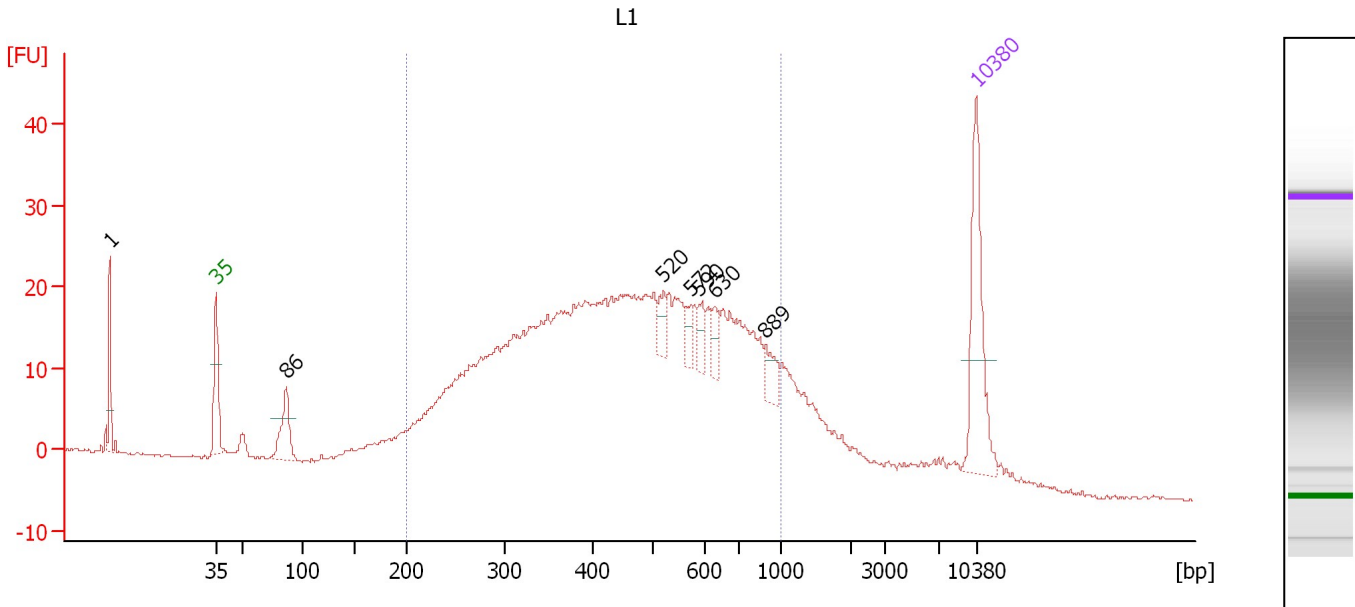
Region table for sample 10 : A10

From [bp]	To [bp]	Average Size [bp]	Corr. Area	Molarity [pmol/l]	Co Conc. [pg/μl]	% of Total	Size distribution in CV [%]
200	1,000	486	873.7	6,371.2	1,686.59	84	37.0

Assay Class: High Sensitivity DNA Assay
 Data Path: C:\...ents and Settings\Bioanalyzer\2016-02-23\2016-02-23_004.xad

Created: 2/23/2016 4:14:23 PM
 Modified: 2/23/2016 4:55:43 PM

Electropherogram Summary Continued ...



Overall Results for sample 11 : L1

Number of peaks found: 7 Corr. Area 1: 727.6
 Noise: 0.1

Peak table for sample 11 : L1

Peak	Size [bp]	Conc. [pg/μl]	Molarity [pmol/l]	Observations	Aligned Migration Time [s]
1	1	0.00	0.0		33.18
2	35	125.00	5,411.3	Lower Marker	43.00
3	86	49.20	865.2		49.44
4	520	15.64	45.6		84.21
5	572	11.60	30.7		86.67
6	590	15.08	38.7		87.51
7	630	14.55	35.0		88.88
8	889	17.59	30.0		93.55
9	10,380	75.00	10.9	Upper Marker	113.00

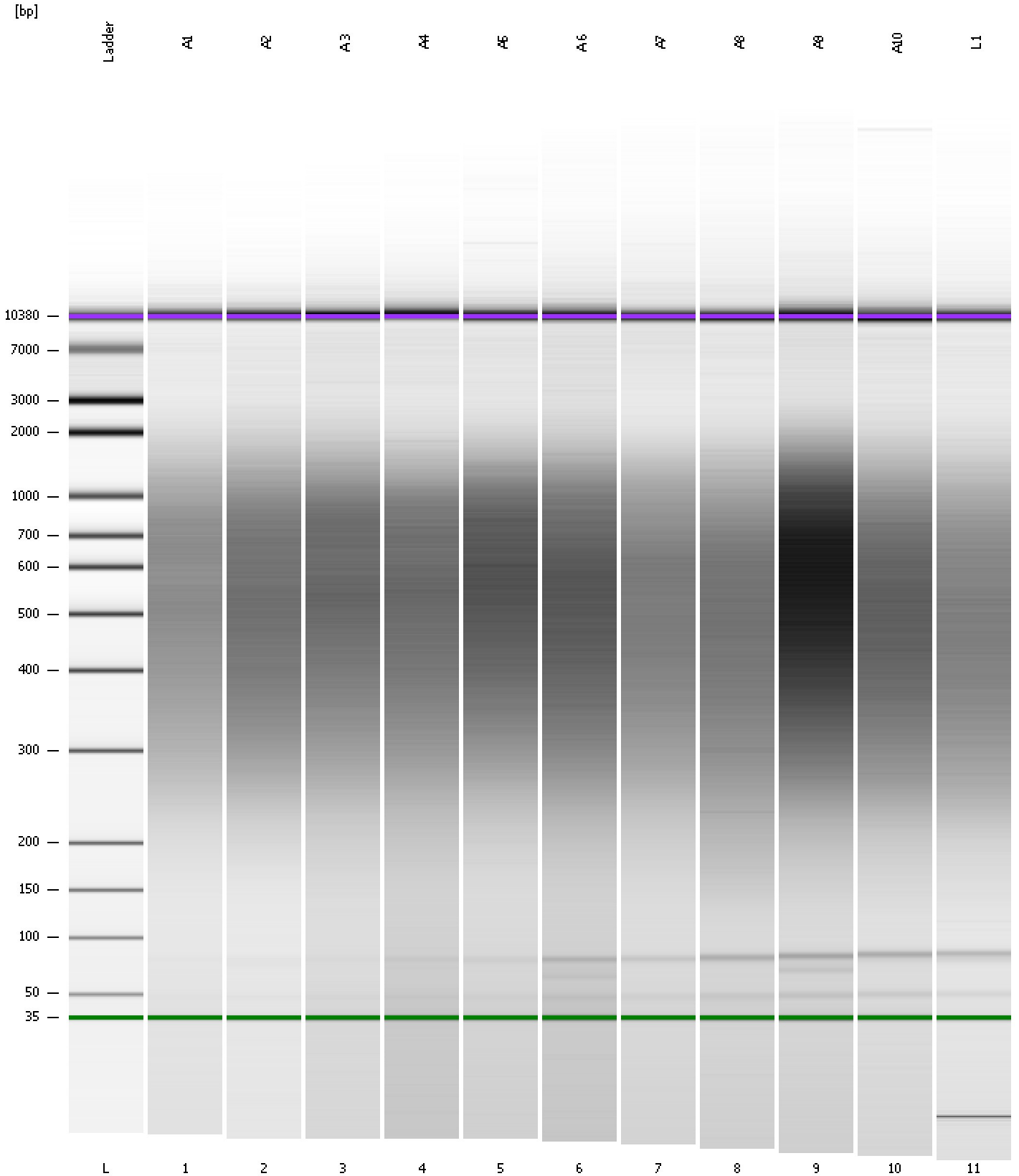
Region table for sample 11 : L1

From [bp]	To [bp]	Average Size [bp]	Corr. Area	Molarity [pmol/l]	Co Conc. [pg/μl]	% of Total	Size distribution in CV [%]
200	1,000	478	727.6	6,633.8	1,724.01	82	37.4

Assay Class: High Sensitivity DNA Assay
Data Path: C:\...ents and Settings\Bioanalyzer\2016-02-23\2016-02-23_004.xad

Created: 2/23/2016 4:14:23 PM
Modified: 2/23/2016 4:55:43 PM

Gel Image



Assay Class: High Sensitivity DNA Assay
 Data Path: C:\...ents and Settings\Bioanalyzer\2016-02-23\2016-02-23_004.xad

Created: 2/23/2016 4:14:23 PM
 Modified: 2/23/2016 4:55:43 PM

Run Logbook

Description	Number	Source	Category	Sub Category	Time	Time Zone	User	Host
Run ended on port 1 (Number of wells acquired: 12)		Instrument	Run		2/23/2016 4:55:42 PM	(GMT --08:00) Pacific Standard Time	UC Davis	D8XSMGH1
Run started on port 1 (File: C:\Documents and Settings\Bioanalyzer\2016-02-23\2016-02-23_004.xad)		Instrument	Run		2/23/2016 4:14:29 PM	(GMT --08:00) Pacific Standard Time	UC Davis	D8XSMGH1
Product Number : G2938B		Instrument	Run		2/23/2016 4:14:29 PM	(GMT --08:00) Pacific Standard Time	UC Davis	D8XSMGH1
Name :		Instrument	Run		2/23/2016 4:14:29 PM	(GMT --08:00) Pacific Standard Time	UC Davis	D8XSMGH1
Vendor : Agilent Technologies		Instrument	Run		2/23/2016 4:14:29 PM	(GMT --08:00) Pacific Standard Time	UC Davis	D8XSMGH1
Serial# : DE13701086		Instrument	Run		2/23/2016 4:14:29 PM	(GMT --08:00) Pacific Standard Time	UC Davis	D8XSMGH1
Firmware : C.01.069		Instrument	Run		2/23/2016 4:14:29 PM	(GMT --08:00) Pacific Standard Time	UC Davis	D8XSMGH1
Cartridge : Electrode		Instrument	Run		2/23/2016 4:14:29 PM	(GMT --08:00) Pacific Standard Time	UC Davis	D8XSMGH1