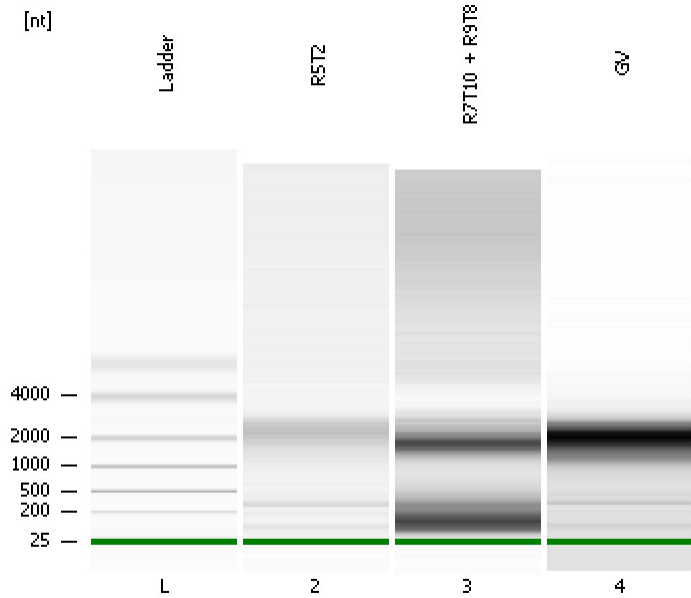


Assay Class: mRNA Pico
Data Path: C:\...data\2016-04-26\2016-04-26_001_HiSeq456_RiboDepletedRNA.xad

Created: 4/26/2016 11:21:47 AM
Modified: 4/26/2016 2:54:47 PM

Electrophoresis File Run Summary



Instrument Information:

Instrument Name: DE13701086 Firmware: C.01.069
Serial#: DE13701086 Type: G2938B

Assay Information:

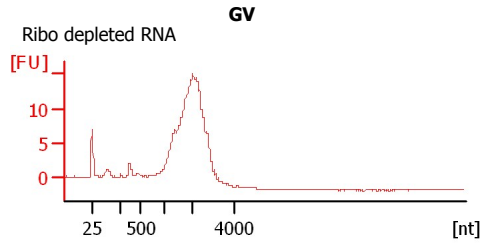
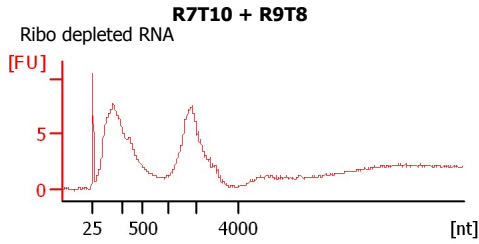
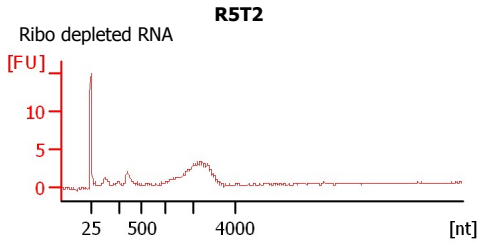
Assay Origin Path: C:\Program Files\Agilent\2100 bioanalyzer\2100 expert\assays\RNA\mRNA Pico Series II.xsy

Assay Class: mRNA Pico
Version: 2.6
Assay Comments: mRNA Analysis pg sensitivity

© Copyright 2003 - 2009 Agilent Technologies, Inc.

Chip Information:

Chip Lot #:
Reagent Kit Lot #:
Chip Comments:



Assay Class: mRNA Pico
Data Path: C:\...data\2016-04-26\2016-04-26_001_HiSeq456_RiboDepletedRNA.xad

Created: 4/26/2016 11:21:47 AM
Modified: 4/26/2016 2:54:47 PM

Electrophoresis File Run Summary (Chip Summary)

Sample Name	Sample Comment	Status	Result Label	Result Color
R5T2	Ribo depleted RNA	✓		
R7T10 + R9T8	Ribo depleted RNA	✓		
GV	Ribo depleted RNA	✓		
Ladder		✓		

Chip Lot #

Reagent Kit Lot #

Chip Comments :

Assay Class: mRNA Pico
Data Path: C:\...data\2016-04-26\2016-04-26_001_HiSeq456_RiboDepletedRNA.xad

Created: 4/26/2016 11:21:47 AM
Modified: 4/26/2016 2:54:47 PM

Electrophoresis Assay Details

General Analysis Settings

Number of Available Sample and Ladder Wells (Max.) : 12
Minimum Visible Range [s] : 14
Maximum Visible Range [s] : 85
Start Analysis Time Range [s] : 15
End Analysis Time Range [s] : 84
Ladder Concentration [pg/ μ l] : 1000
Lower Marker Concentration [pg/ μ l] : 0
Upper Marker Concentration [pg/ μ l] : 0
Used Lower Marker for Quantitation
Standard Curve Fit is Logarithmic
Show Data Aligned to Lower Marker

Integrator Settings

Integration Start Time [s] : 15
Integration End Time [s] : 84
Slope Threshold : 0.2
Height Threshold [FU] : 0.5
Area Threshold : 0.1
Width Threshold [s] : 0.2
Baseline Plateau [s] : 0.5

Filter Settings

Filter Width [s] : 0.5
Polynomial Order : 4

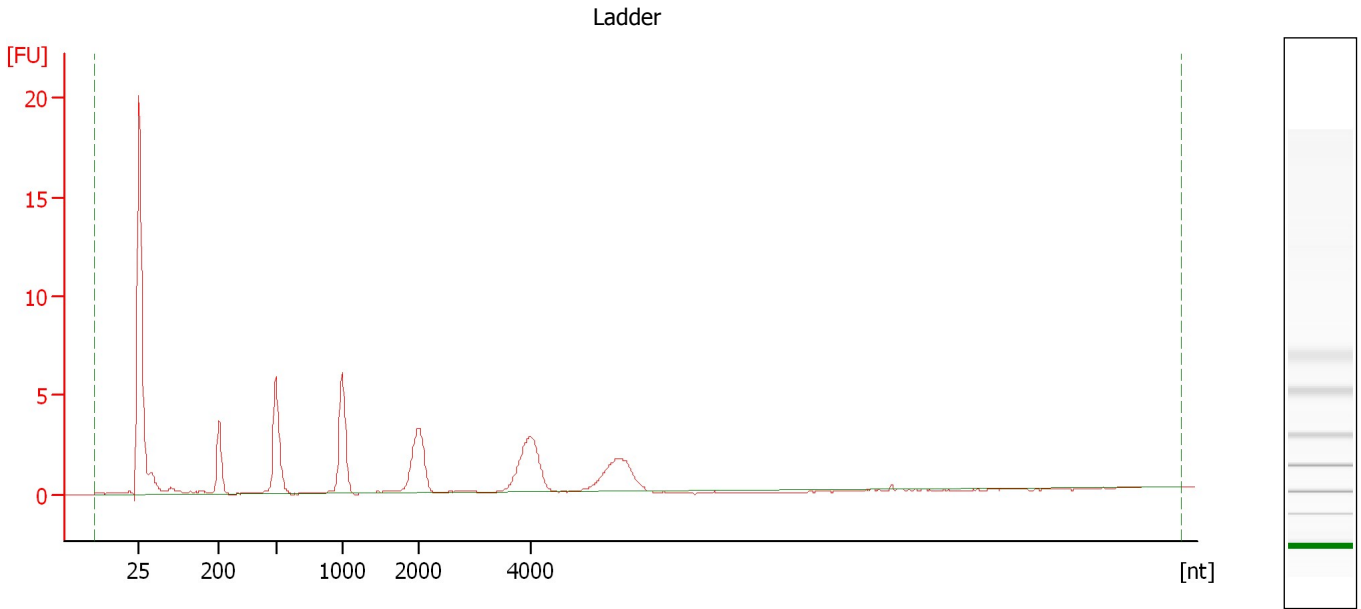
Ladder

Ladder Peak	Size
1	25
2	200
3	500
4	1000
5	2000
6	4000

Assay Class: mRNA Pico
Data Path: C:\...data\2016-04-26\2016-04-26_001_HiSeq456_RiboDepletedRNA.xad

Created: 4/26/2016 11:21:47 AM
Modified: 4/26/2016 2:54:47 PM

Electropherogram Summary



Overall Results for Ladder

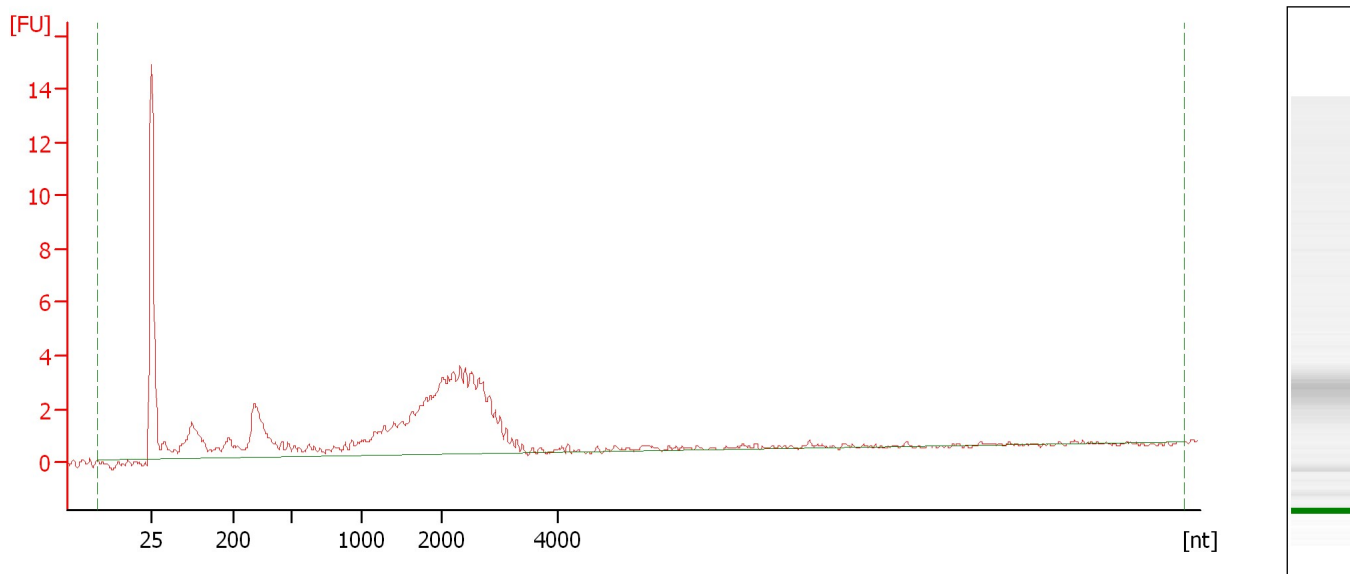
RNA Area: 52.2 RNA Concentration: 1,000 pg/μl

Assay Class: mRNA Pico
Data Path: C:\...data\2016-04-26\2016-04-26_001_HiSeq456_RiboDepletedRNA.xad

Created: 4/26/2016 11:21:47 AM
Modified: 4/26/2016 2:54:47 PM

Electropherogram Summary Continued ...

R5T2 [Ribo depleted RNA]



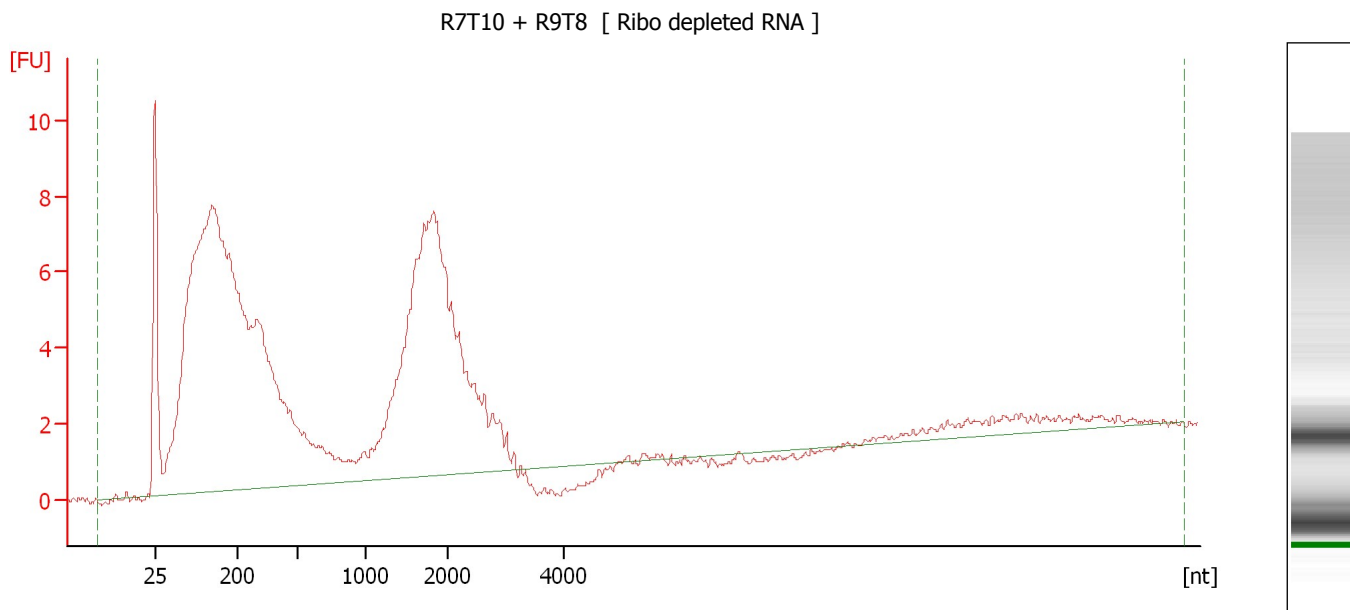
Overall Results for sample 2 : R5T2

RNA Area: 71.1 rRNA Contamination: 0.0 %
RNA Concentration: 1,363 pg/μl

Assay Class: mRNA Pico
Data Path: C:\...data\2016-04-26\2016-04-26_001_HiSeq456_RiboDepletedRNA.xad

Created: 4/26/2016 11:21:47 AM
Modified: 4/26/2016 2:54:47 PM

Electropherogram Summary Continued ...



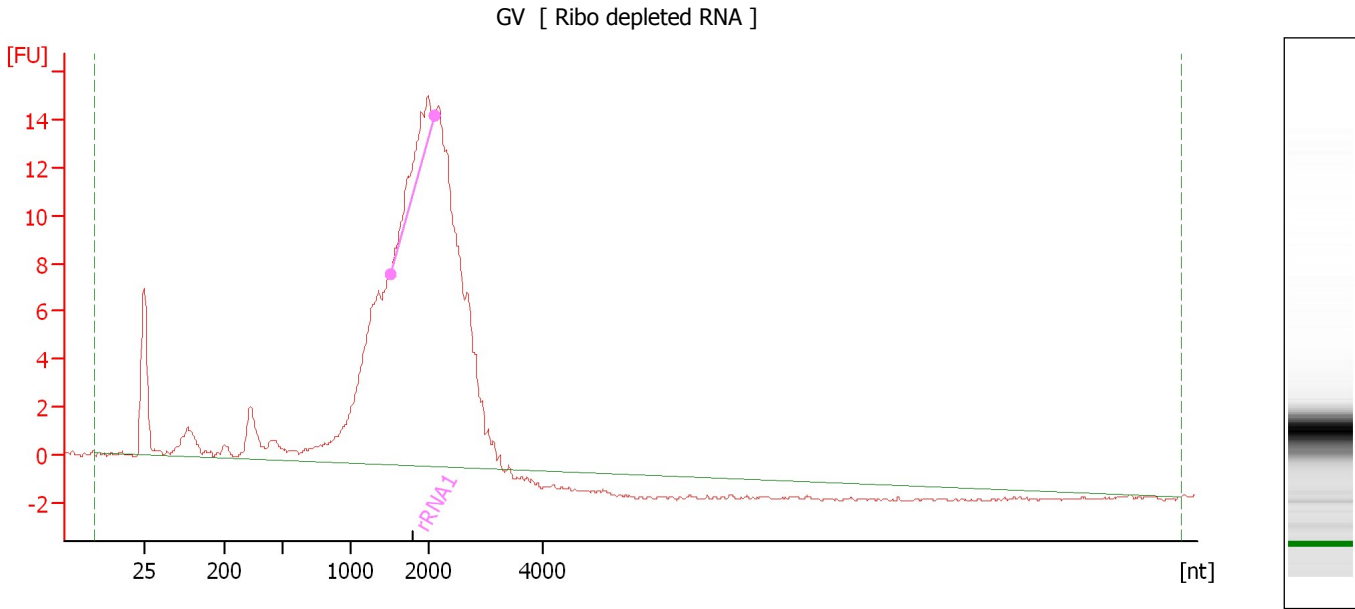
Overall Results for sample 3 : R7T10 + R9T8

RNA Area: 249.2 rRNA Contamination: 0.0 %
RNA Concentration: 4,778 pg/ μ l

Assay Class: mRNA Pico
 Data Path: C:\...data\2016-04-26\2016-04-26_001_HiSeq456_RiboDepletedRNA.xad

Created: 4/26/2016 11:21:47 AM
 Modified: 4/26/2016 2:54:47 PM

Electropherogram Summary Continued ...



Overall Results for sample 4 : GV

RNA Area: 240.1 rRNA Contamination: 3.1 %
 RNA Concentration: 4,603 pg/μl

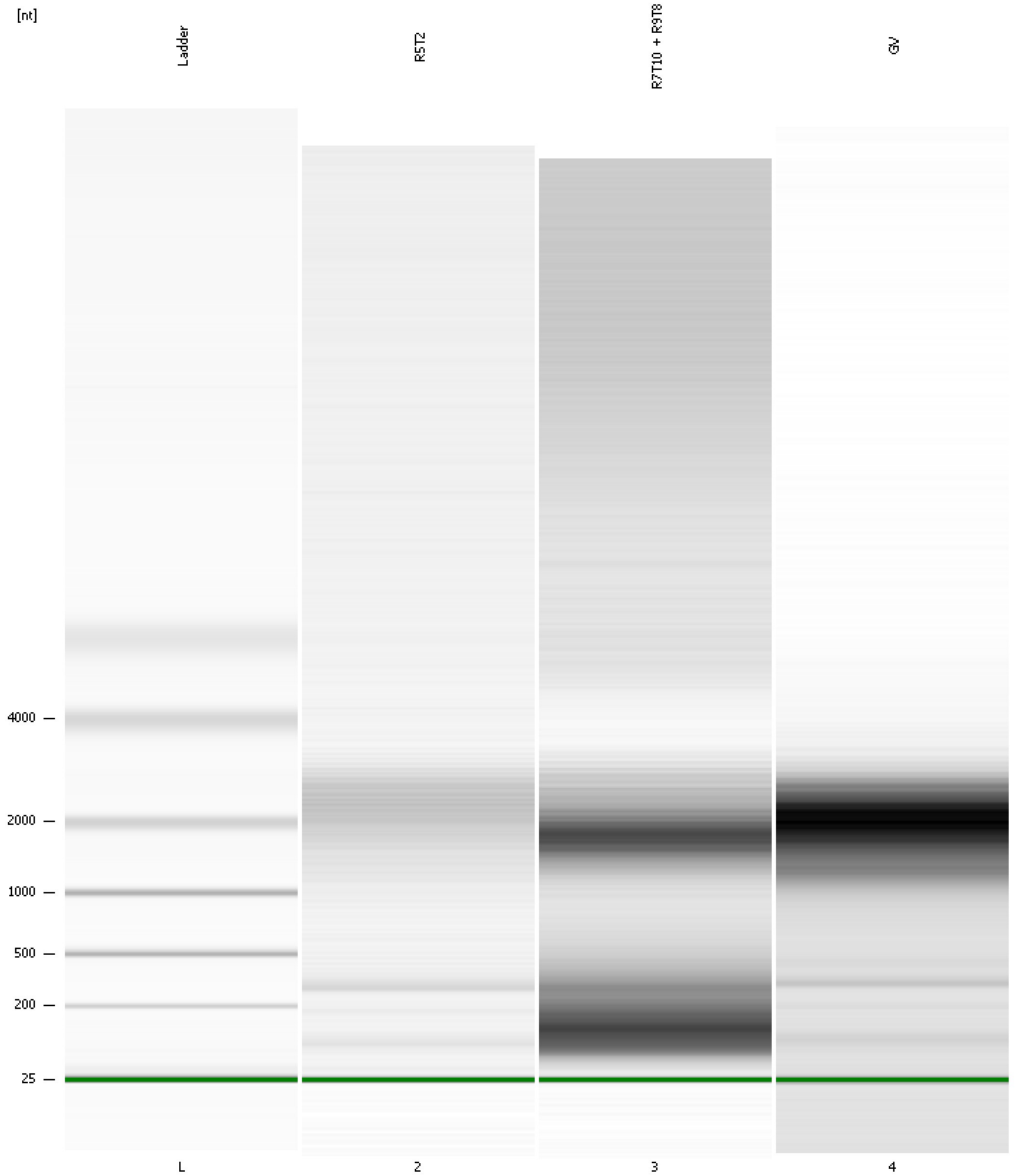
Fragment table for sample 4 : GV

Name	Start Size [nt]	End Size [nt]	Area	% of total Area
rRNA1	1,516	2,103	7.5	3.1

Assay Class: mRNA Pico
Data Path: C:\...data\2016-04-26\2016-04-26_001_HiSeq456_RiboDepletedRNA.xad

Created: 4/26/2016 11:21:47 AM
Modified: 4/26/2016 2:54:47 PM

Gel Image

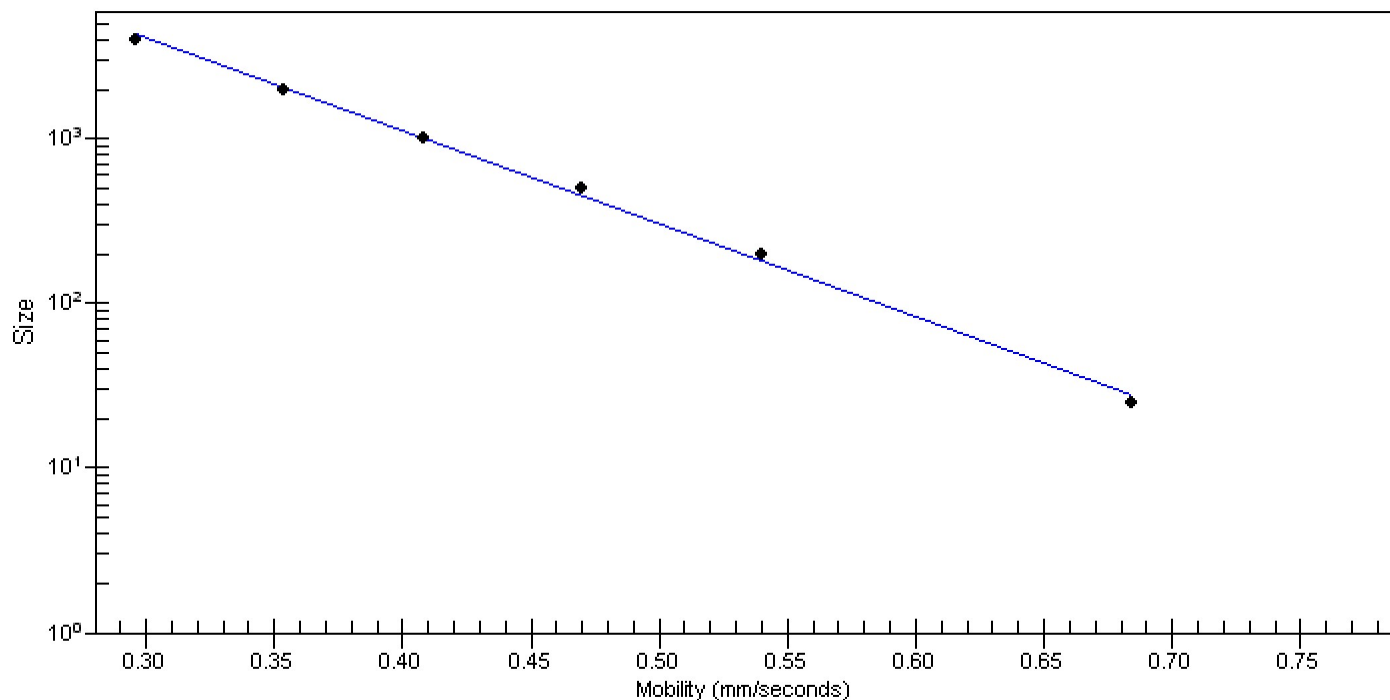


Assay Class: mRNA Pico
Data Path: C:\...data\2016-04-26\2016-04-26_001_HiSeq456_RiboDepletedRNA.xad

Created: 4/26/2016 11:21:47 AM
Modified: 4/26/2016 2:54:47 PM

Curves

Standard Curve



Assay Class: mRNA Pico
 Data Path: C:\...data\2016-04-26\2016-04-26_001_HiSeq456_RiboDepletedRNA.xad

Created: 4/26/2016 11:21:47 AM
 Modified: 4/26/2016 2:54:47 PM

Run Logbook

Description	Number	Source	Category	Sub Category	Time	Time Zone	User	Host
Run ended on port 1 (Number of wells acquired: 12)		Instrument	Run		4/26/2016 11:47:40 AM	(GMT --07:00) Pacific Standard Time	UC Davis	D8XSMGH1
Run started on port 1 (File: C:\Program Files\Agilent\2100 bioanalyzer\2100 expert\data\2016-04-26\2016-04-26_001.xad)		Instrument	Run		4/26/2016 11:21:53 AM	(GMT --07:00) Pacific Standard Time	UC Davis	D8XSMGH1
Product Number : G2938B		Instrument	Run		4/26/2016 11:21:53 AM	(GMT --07:00) Pacific Standard Time	UC Davis	D8XSMGH1
Name :		Instrument	Run		4/26/2016 11:21:53 AM	(GMT --07:00) Pacific Standard Time	UC Davis	D8XSMGH1
Vendor : Agilent Technologies		Instrument	Run		4/26/2016 11:21:53 AM	(GMT --07:00) Pacific Standard Time	UC Davis	D8XSMGH1
Serial# : DE13701086		Instrument	Run		4/26/2016 11:21:53 AM	(GMT --07:00) Pacific Standard Time	UC Davis	D8XSMGH1
Firmware : C.01.069		Instrument	Run		4/26/2016 11:21:53 AM	(GMT --07:00) Pacific Standard Time	UC Davis	D8XSMGH1
Cartridge : Electrode		Instrument	Run		4/26/2016 11:21:53 AM	(GMT --07:00) Pacific Standard Time	UC Davis	D8XSMGH1