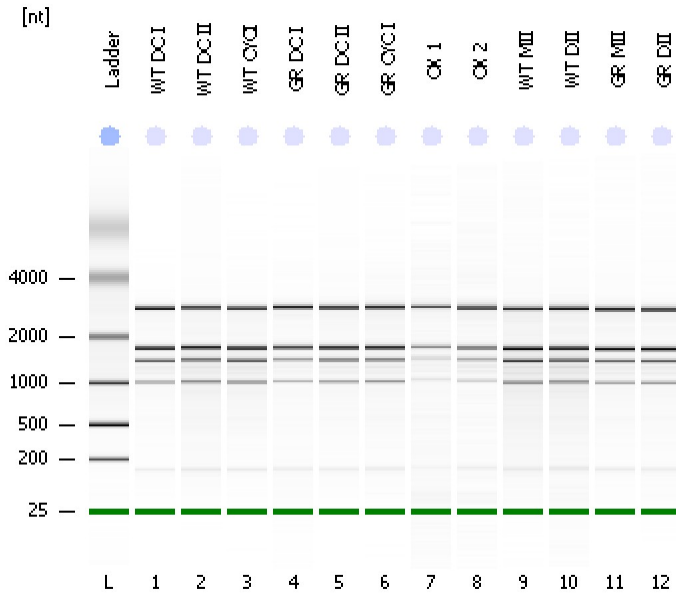


Assay Class: Plant RNA Nano
Data Path: C:\... bioanalyzer\2100 expert\data\2016-07-13\2016-07-13_003.xad

Created: 7/13/2016 2:57:23 PM
Modified: 7/13/2016 3:21:14 PM

Electrophoresis File Run Summary



Instrument Information:

Instrument Name: DE13701086 Firmware: C.01.069
Serial#: DE13701086 Type: G2938B

Assay Information:

Assay Origin Path: C:\Program Files\Agilent\2100 bioanalyzer\2100 expert\assays\RNA\Plant RNA Nano.xsy

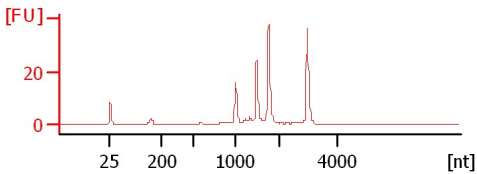
Assay Class: Plant RNA Nano
Version: 1.3
Assay Comments: Total RNA Analysis ng sensitivity (Plant)

© Copyright 2003 - 2009 Agilent Technologies, Inc.

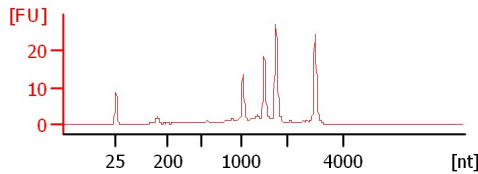
Chip Information:

Chip Lot #:
Reagent Kit Lot #:
Chip Comments:

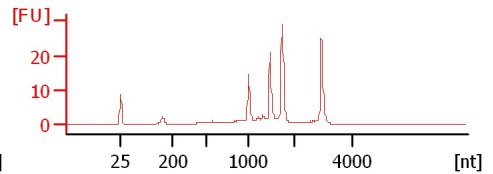
WT DC I
RIN: 6.70



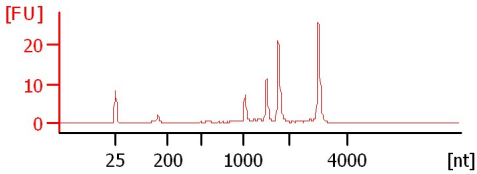
WT DC II
RIN: 6.30



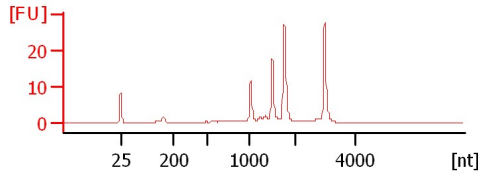
WT CYC I
RIN: 6.30



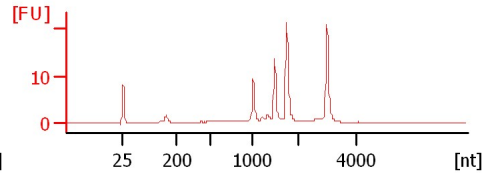
GR DC I
RIN: 7.30



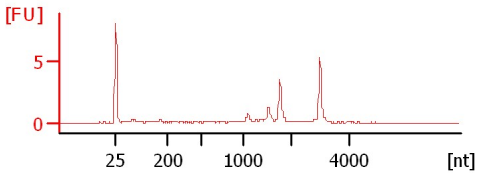
GR DC II
RIN: 6.70



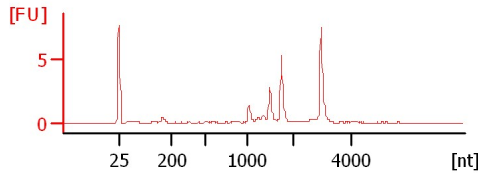
GR CYC I
RIN: 6.70



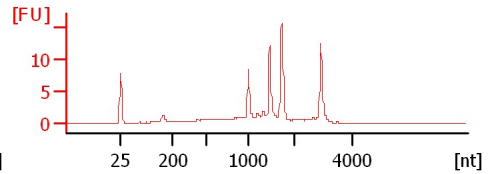
OX 1
RIN: 7.80



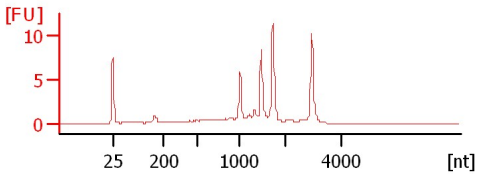
OX 2
RIN: 7.80



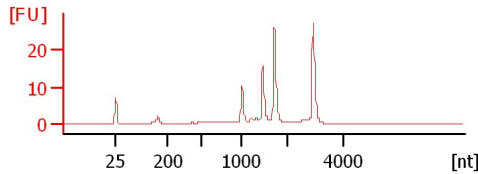
WT MII
RIN: 6.30



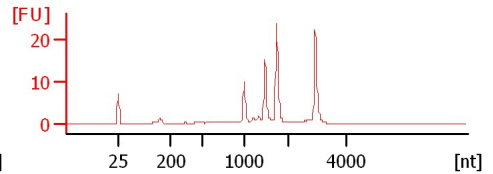
WT DII
RIN: 6.50



GR MII
RIN: 6.80



GR DII
RIN: 6.70



Assay Class: Plant RNA Nano
Data Path: C:\... bioanalyzer\2100 expert\data\2016-07-13\2016-07-13_003.xad

Created: 7/13/2016 2:57:23 PM
Modified: 7/13/2016 3:21:14 PM

Electrophoresis File Run Summary (Chip Summary)

Sample Name	Sample Comment	Status	Result Label	Result Color
WT DC I		✓	RIN: 6.70	
WT DC II		✓	RIN: 6.30	
WT CYCI		✓	RIN: 6.30	
GR DC I		✓	RIN: 7.30	
GR DC II		✓	RIN: 6.70	
GR CYC I		✓	RIN: 6.70	
OX 1		✓	RIN: 7.80	
OX 2		✓	RIN: 7.80	
WT MII		✓	RIN: 6.30	
WT DII		✓	RIN: 6.50	
GR MII		✓	RIN: 6.80	
GR DII		✓	RIN: 6.70	
Ladder		✓	All Other Samples	

Chip Lot #

Reagent Kit Lot #

Chip Comments :

Assay Class: Plant RNA Nano
Data Path: C:\... bioanalyzer\2100 expert\data\2016-07-13\2016-07-13_003.xad

Created: 7/13/2016 2:57:23 PM
Modified: 7/13/2016 3:21:14 PM

Electrophoresis Assay Details

General Analysis Settings

Number of Available Sample and Ladder Wells (Max.) : 13
Minimum Visible Range [s] : 17
Maximum Visible Range [s] : 70
Start Analysis Time Range [s] : 19
End Analysis Time Range [s] : 69
Ladder Concentration [ng/μl] : 150
Lower Marker Concentration [ng/μl] : 0
Upper Marker Concentration [ng/μl] : 0
Used Lower Marker for Quantitation
Standard Curve Fit is Logarithmic
Show Data Aligned to Lower Marker

Integrator Settings

Integration Start Time [s] : 19
Integration End Time [s] : 69
Slope Threshold : 0.6
Height Threshold [FU] : 0.2
Area Threshold : 0.1
Width Threshold [s] : 0.2
Baseline Plateau [s] : 6

Filter Settings

Filter Width [s] : 0.5
Polynomial Order : 4

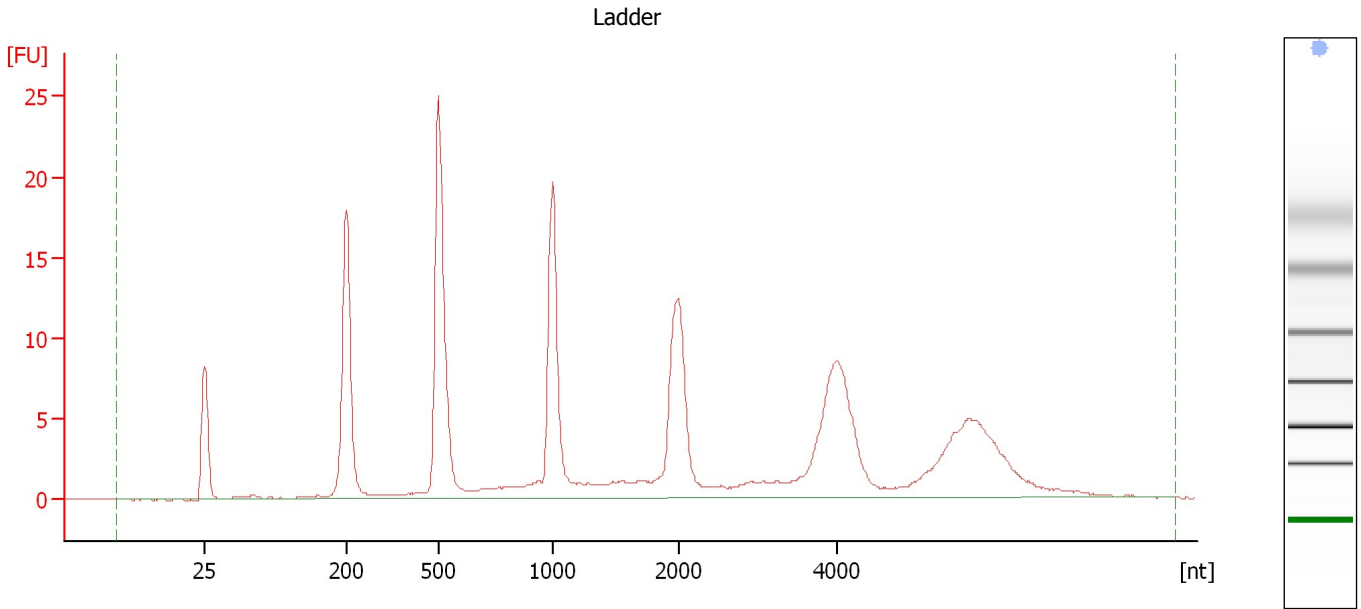
Ladder

Ladder Peak	Size
1	25
2	200
3	500
4	1000
5	2000
6	4000

Assay Class: Plant RNA Nano
Data Path: C:\... bioanalyzer\2100 expert\data\2016-07-13\2016-07-13_003.xad

Created: 7/13/2016 2:57:23 PM
Modified: 7/13/2016 3:21:14 PM

Electropherogram Summary



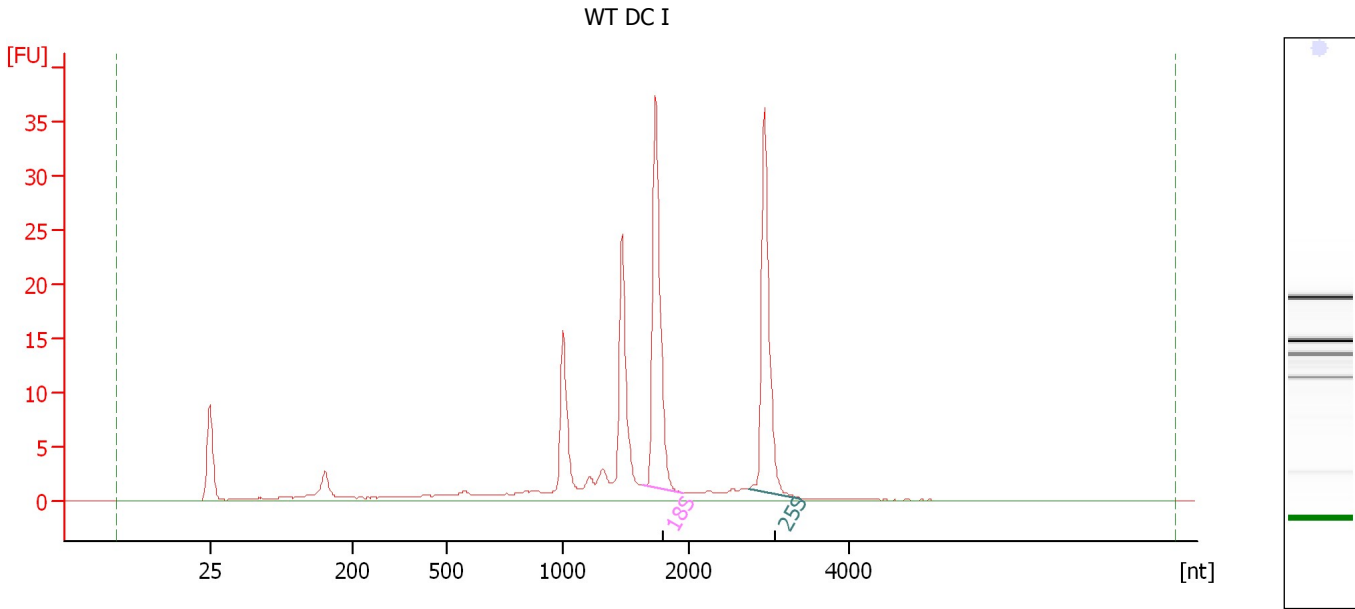
Overall Results for Ladder

RNA Area:	195.0	Result Flagging Color:	
RNA Concentration:	150 ng/ μ l	Result Flagging Label:	All Other Samples

Assay Class: Plant RNA Nano
Data Path: C:\... bioanalyzer\2100 expert\data\2016-07-13\2016-07-13_003.xad

Created: 7/13/2016 2:57:23 PM
Modified: 7/13/2016 3:21:14 PM

Electropherogram Summary Continued ...



Overall Results for sample 1 : WT DC I

RNA Area: 149.0 RNA Integrity Number (RIN): 6.7 (B.02.08)
RNA Concentration: 115 ng/μl Result Flagging Color:
rRNA Ratio [25s / 18s]: 0.9 Result Flagging Label: RIN: 6.70

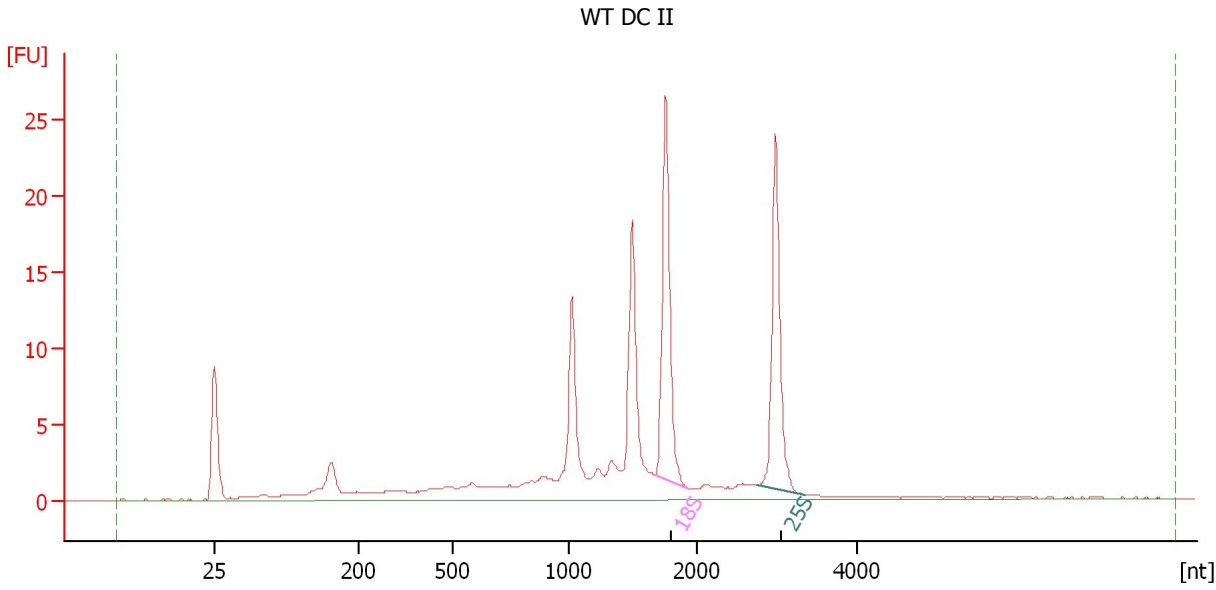
Fragment table for sample 1 : WT DC I

Name	Start Size [nt]	End Size [nt]	Area	% of total Area
18S	1,647	1,960	33.5	22.5
25S	2,752	3,408	29.9	20.1

Assay Class: Plant RNA Nano
Data Path: C:\... bioanalyzer\2100 expert\data\2016-07-13\2016-07-13_003.xad

Created: 7/13/2016 2:57:23 PM
Modified: 7/13/2016 3:21:14 PM

Electropherogram Summary Continued ...



Overall Results for sample 2 : WT DC II

RNA Area: 134.0 RNA Integrity Number (RIN): 6.3 (B.02.08)
RNA Concentration: 103 ng/μl Result Flagging Color:
rRNA Ratio [25s / 18s]: 0.9 Result Flagging Label: RIN: 6.30

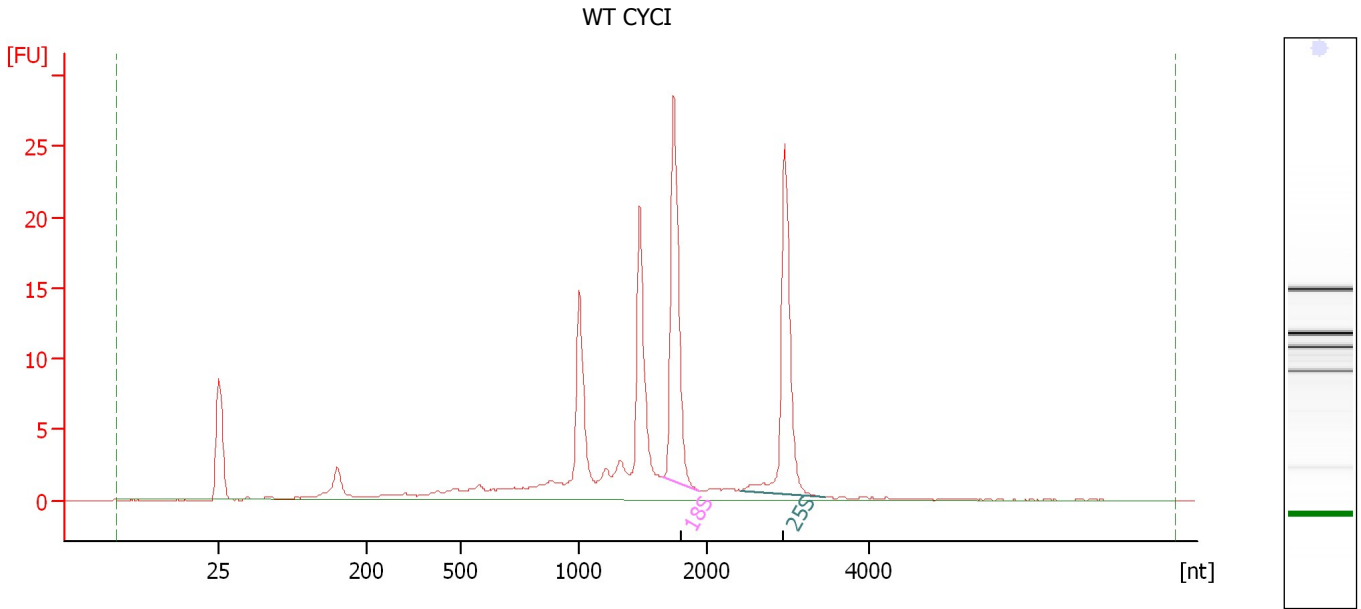
Fragment table for sample 2 : WT DC II

Name	Start Size [nt]	End Size [nt]	Area	% of total Area
18S	1,669	1,945	23.1	17.2
25S	2,749	3,333	20.0	14.9

Assay Class: Plant RNA Nano
Data Path: C:\... bioanalyzer\2100 expert\data\2016-07-13\2016-07-13_003.xad

Created: 7/13/2016 2:57:23 PM
Modified: 7/13/2016 3:21:14 PM

Electropherogram Summary Continued ...



Overall Results for sample 3 : WT CYCI

RNA Area: 130.2 RNA Integrity Number (RIN): 6.3 (B.02.08)
RNA Concentration: 100 ng/μl Result Flagging Color:
rRNA Ratio [25s / 18s]: 0.9 Result Flagging Label: RIN: 6.30

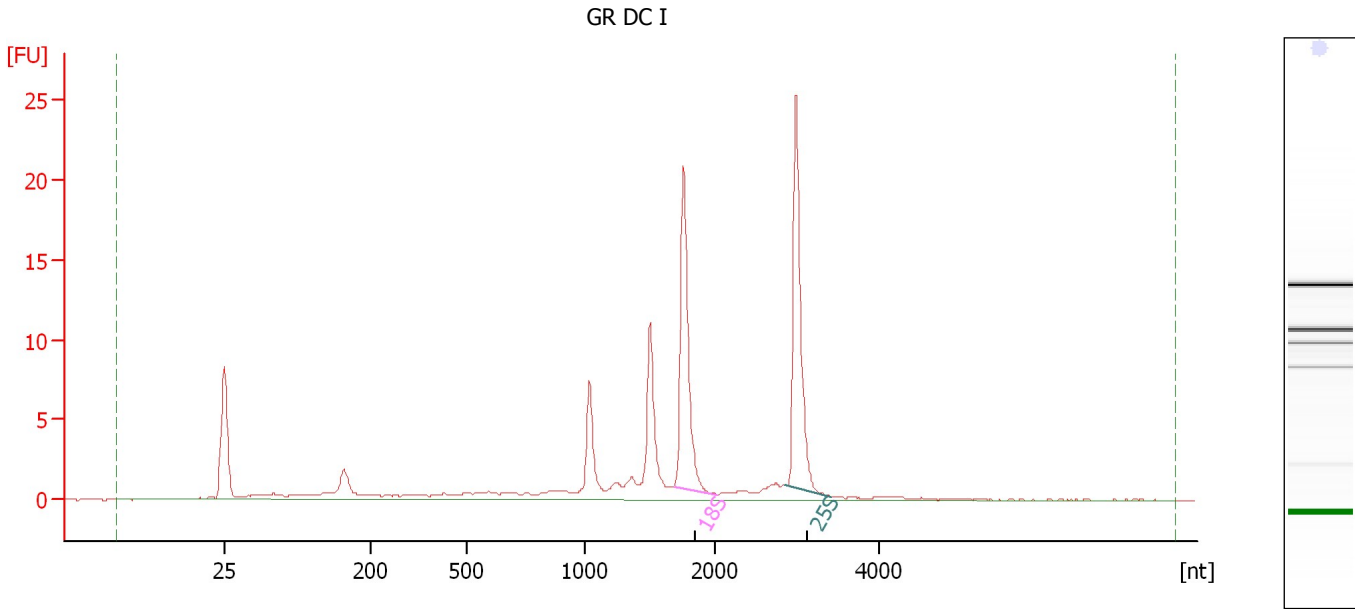
Fragment table for sample 3 : WT CYCI

Name	Start Size [nt]	End Size [nt]	Area	% of total Area
18S	1,650	1,932	25.1	19.3
25S	2,418	3,441	22.7	17.4

Assay Class: Plant RNA Nano
Data Path: C:\... bioanalyzer\2100 expert\data\2016-07-13\2016-07-13_003.xad

Created: 7/13/2016 2:57:23 PM
Modified: 7/13/2016 3:21:14 PM

Electropherogram Summary Continued ...



Overall Results for sample 4 : GR DC I

RNA Area: 89.8 RNA Integrity Number (RIN): 7.3 (B.02.08)
RNA Concentration: 69 ng/μl Result Flagging Color:
rRNA Ratio [25s / 18s]: 1.0 Result Flagging Label: RIN: 7.30

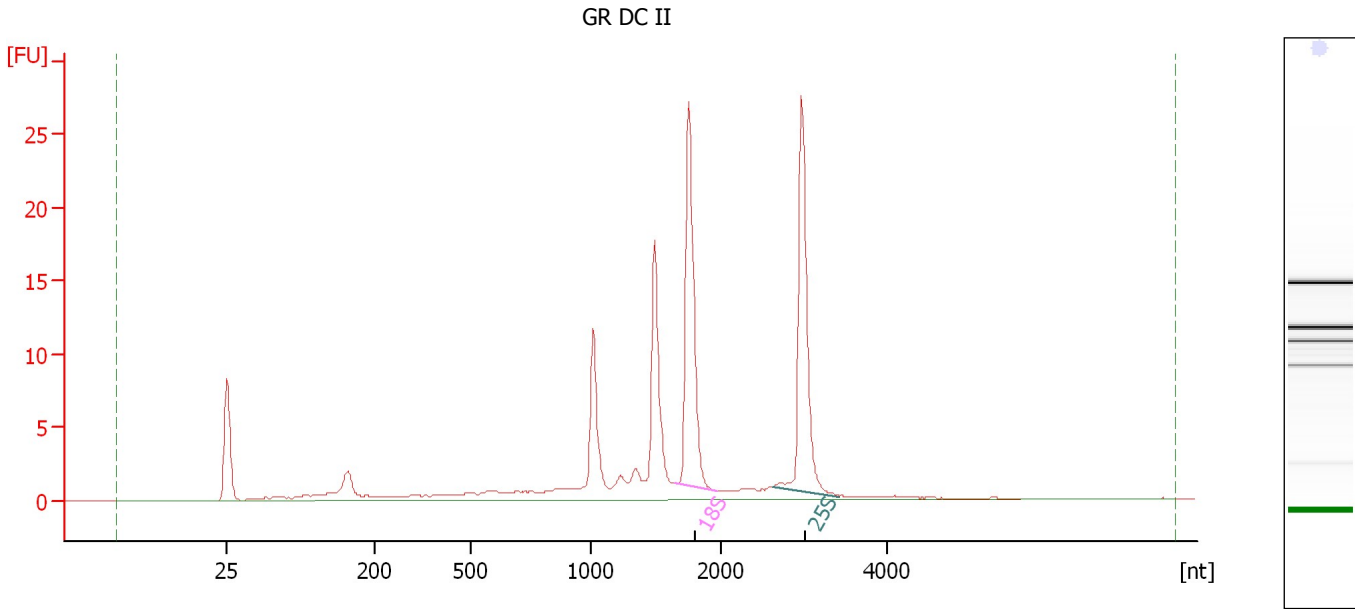
Fragment table for sample 4 : GR DC I

Name	Start Size [nt]	End Size [nt]	Area	% of total Area
18S	1,688	2,027	19.0	21.1
25S	2,860	3,420	19.7	22.0

Assay Class: Plant RNA Nano
Data Path: C:\... bioanalyzer\2100 expert\data\2016-07-13\2016-07-13_003.xad

Created: 7/13/2016 2:57:23 PM
Modified: 7/13/2016 3:21:14 PM

Electropherogram Summary Continued ...



Overall Results for sample 5 : GR DC II

RNA Area: 114.3 RNA Integrity Number (RIN): 6.7 (B.02.08)
RNA Concentration: 88 ng/μl Result Flagging Color:
rRNA Ratio [25s / 18s]: 0.9 Result Flagging Label: RIN: 6.70

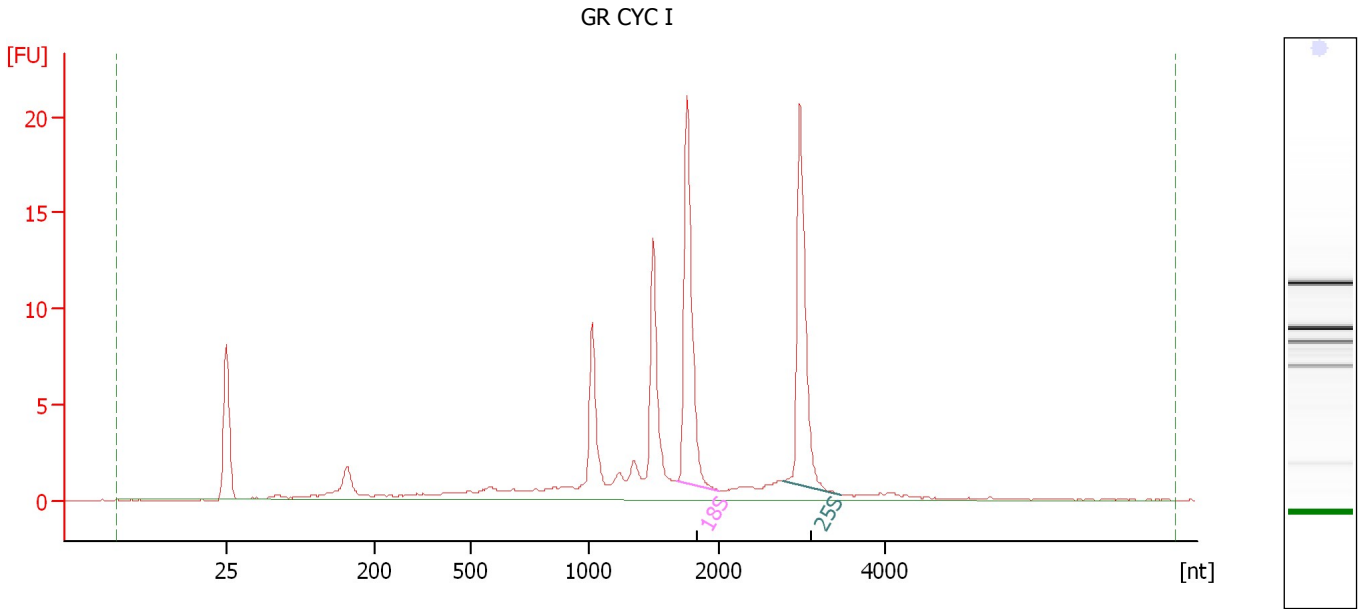
Fragment table for sample 5 : GR DC II

Name	Start Size [nt]	End Size [nt]	Area	% of total Area
18S	1,650	1,969	24.7	21.6
25S	2,624	3,426	23.0	20.1

Assay Class: Plant RNA Nano
Data Path: C:\... bioanalyzer\2100 expert\data\2016-07-13\2016-07-13_003.xad

Created: 7/13/2016 2:57:23 PM
Modified: 7/13/2016 3:21:14 PM

Electropherogram Summary Continued ...



Overall Results for sample 6 : GR CYC I

RNA Area: 95.4 RNA Integrity Number (RIN): 6.7 (B.02.08)
RNA Concentration: 73 ng/μl Result Flagging Color:
rRNA Ratio [25s / 18s]: 0.9 Result Flagging Label: RIN: 6.70

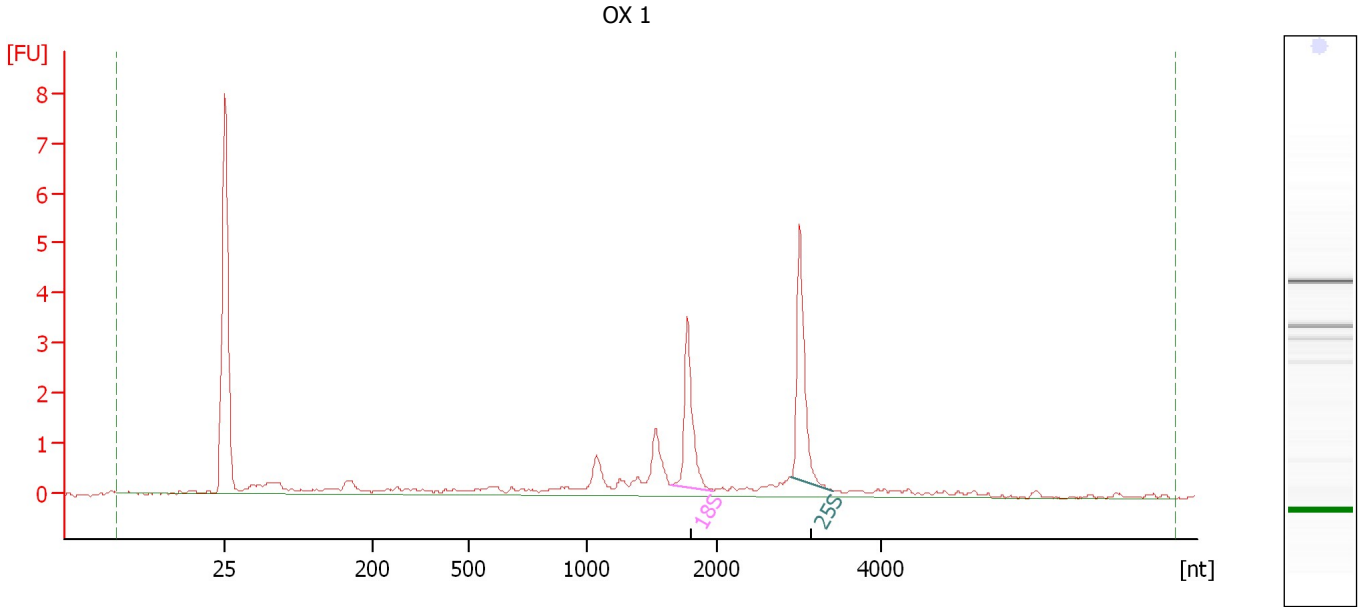
Fragment table for sample 6 : GR CYC I

Name	Start Size [nt]	End Size [nt]	Area	% of total Area
18S	1,673	1,993	18.9	19.8
25S	2,780	3,480	16.9	17.8

Assay Class: Plant RNA Nano
Data Path: C:\... bioanalyzer\2100 expert\data\2016-07-13\2016-07-13_003.xad

Created: 7/13/2016 2:57:23 PM
Modified: 7/13/2016 3:21:14 PM

Electropherogram Summary Continued ...



Overall Results for sample 7 : OX 1

RNA Area:	19.8	RNA Integrity Number (RIN):	7.8 (B.02.08)
RNA Concentration:	15 ng/μl	Result Flagging Color:	
rRNA Ratio [25s / 18s]:	1.2	Result Flagging Label:	RIN: 7.80

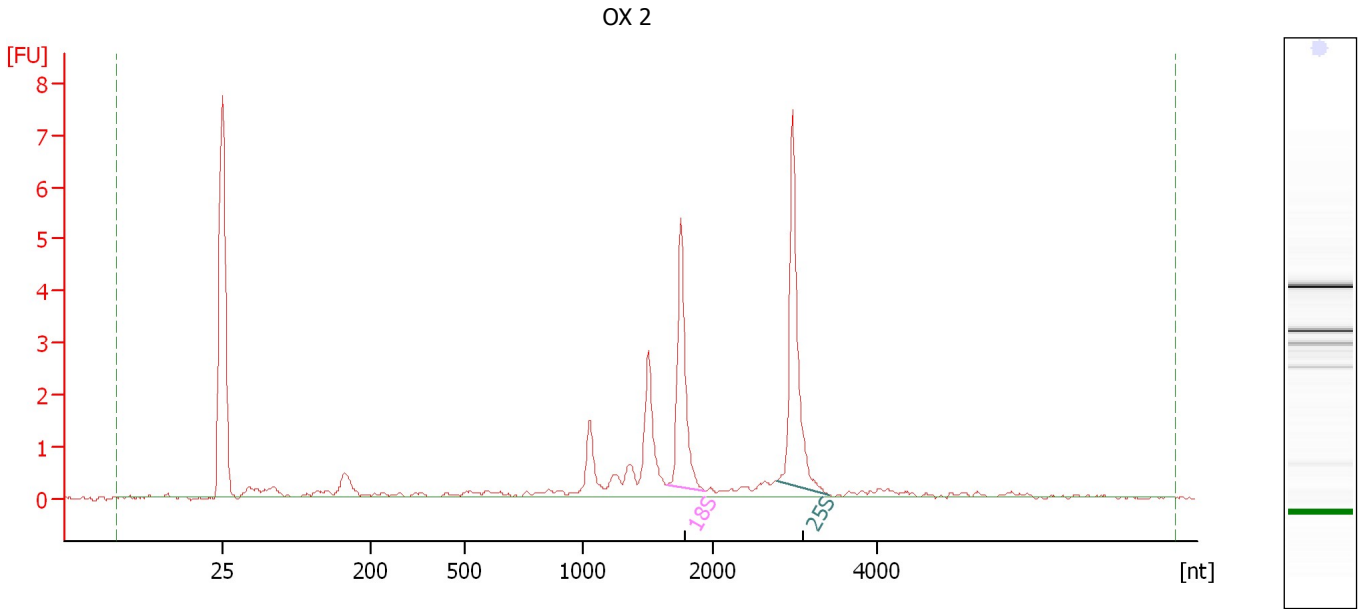
Fragment table for sample 7 : OX 1

Name	Start Size [nt]	End Size [nt]	Area	% of total Area
18S	1,648	1,968	3.2	16.0
25S	2,898	3,405	3.9	19.8

Assay Class: Plant RNA Nano
Data Path: C:\... bioanalyzer\2100 expert\data\2016-07-13\2016-07-13_003.xad

Created: 7/13/2016 2:57:23 PM
Modified: 7/13/2016 3:21:14 PM

Electropherogram Summary Continued ...



Overall Results for sample 8 : OX 2

RNA Area: 24.7 RNA Integrity Number (RIN): 7.8 (B.02.08)
RNA Concentration: 19 ng/μl Result Flagging Color:
rRNA Ratio [25s / 18s]: 1.3 Result Flagging Label: RIN: 7.80

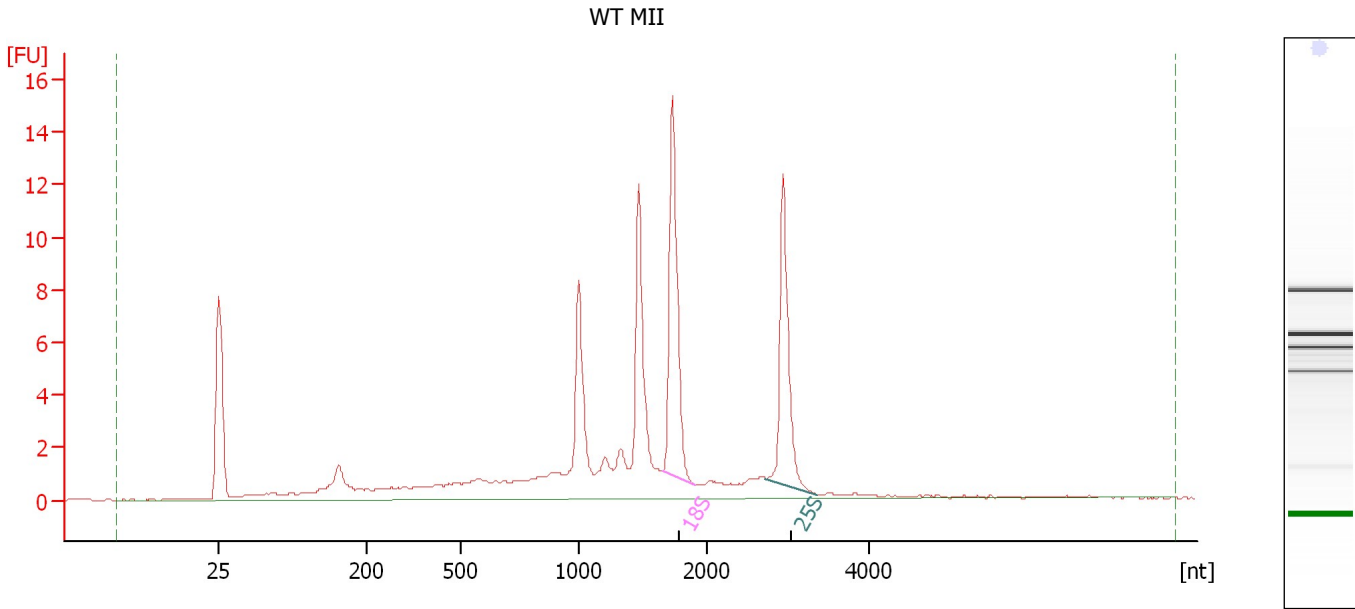
Fragment table for sample 8 : OX 2

Name	Start Size [nt]	End Size [nt]	Area	% of total Area
18S	1,645	1,942	4.7	19.0
25S	2,783	3,422	6.2	25.2

Assay Class: Plant RNA Nano
Data Path: C:\... bioanalyzer\2100 expert\data\2016-07-13\2016-07-13_003.xad

Created: 7/13/2016 2:57:23 PM
Modified: 7/13/2016 3:21:14 PM

Electropherogram Summary Continued ...



Overall Results for sample 9 : WT MII

RNA Area: 85.1 RNA Integrity Number (RIN): 6.3 (B.02.08)
RNA Concentration: 65 ng/μl Result Flagging Color:
rRNA Ratio [25s / 18s]: 0.8 Result Flagging Label: RIN: 6.30

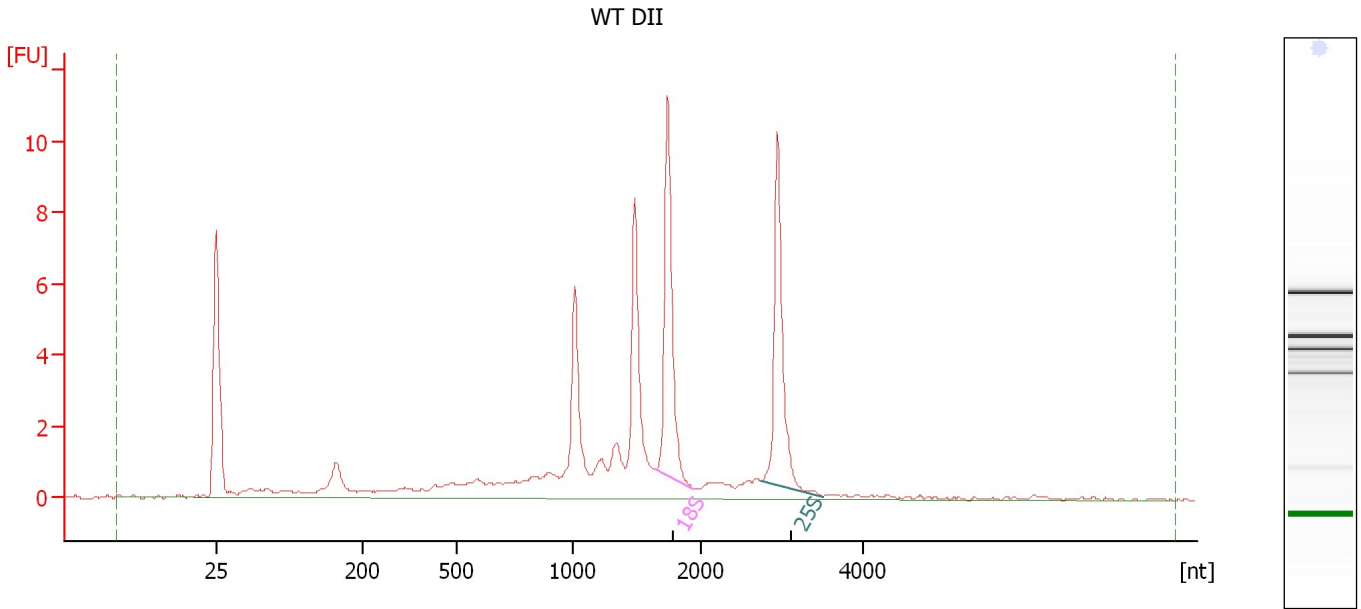
Fragment table for sample 9 : WT MII

Name	Start Size [nt]	End Size [nt]	Area	% of total Area
18S	1,650	1,899	13.4	15.8
25S	2,719	3,349	10.3	12.1

Assay Class: Plant RNA Nano
Data Path: C:\... bioanalyzer\2100 expert\data\2016-07-13\2016-07-13_003.xad

Created: 7/13/2016 2:57:23 PM
Modified: 7/13/2016 3:21:14 PM

Electropherogram Summary Continued ...



Overall Results for sample 10 : WT DII

RNA Area: 62.1 RNA Integrity Number (RIN): 6.5 (B.02.08)
RNA Concentration: 48 ng/μl Result Flagging Color:
rRNA Ratio [25s / 18s]: 0.9 Result Flagging Label: RIN: 6.50

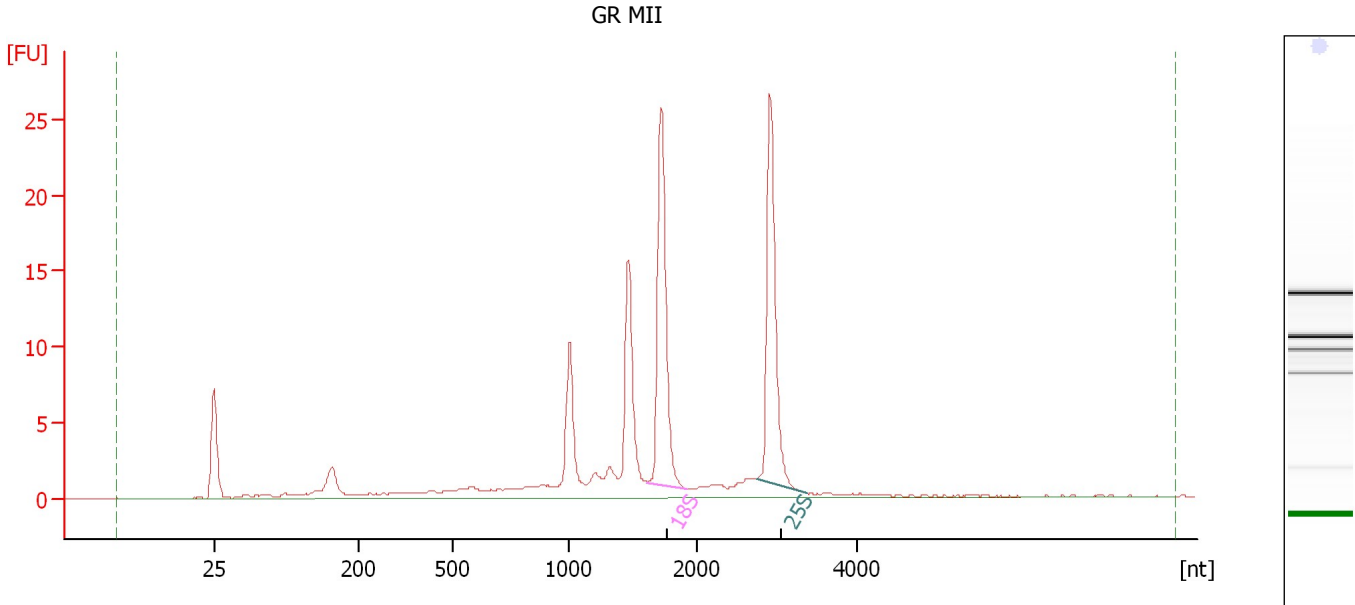
Fragment table for sample 10 : WT DII

Name	Start Size [nt]	End Size [nt]	Area	% of total Area
18S	1,646	1,938	9.9	15.9
25S	2,735	3,501	9.0	14.5

Assay Class: Plant RNA Nano
Data Path: C:\... bioanalyzer\2100 expert\data\2016-07-13\2016-07-13_003.xad

Created: 7/13/2016 2:57:23 PM
Modified: 7/13/2016 3:21:14 PM

Electropherogram Summary Continued ...



Overall Results for sample 11 : GR MII

RNA Area: 111.2 RNA Integrity Number (RIN): 6.8 (B.02.08)
RNA Concentration: 86 ng/μl Result Flagging Color:
rRNA Ratio [25s / 18s]: 0.9 Result Flagging Label: RIN: 6.80

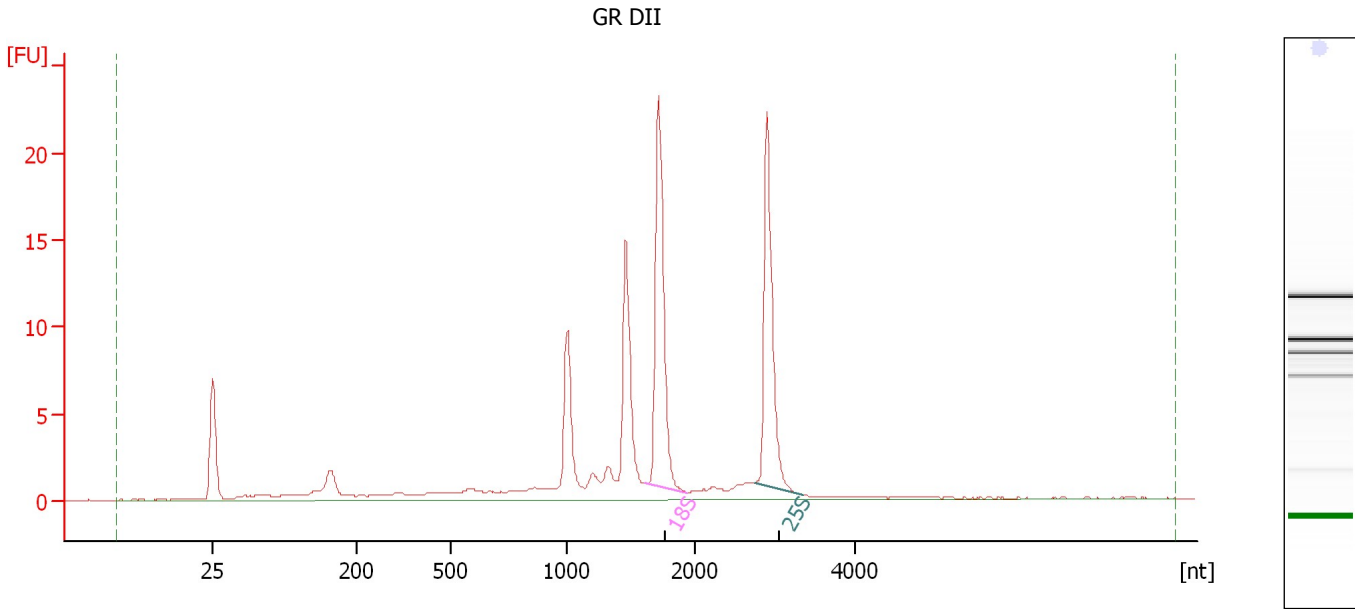
Fragment table for sample 11 : GR MII

Name	Start Size [nt]	End Size [nt]	Area	% of total Area
18S	1,610	1,920	24.0	21.6
25S	2,736	3,373	22.4	20.2

Assay Class: Plant RNA Nano
Data Path: C:\... bioanalyzer\2100 expert\data\2016-07-13\2016-07-13_003.xad

Created: 7/13/2016 2:57:23 PM
Modified: 7/13/2016 3:21:14 PM

Electropherogram Summary Continued ...



Overall Results for sample 12 : GR DII

RNA Area: 100.6 RNA Integrity Number (RIN): 6.7 (B.02.08)
RNA Concentration: 77 ng/μl Result Flagging Color:
rRNA Ratio [25s / 18s]: 0.9 Result Flagging Label: RIN: 6.70

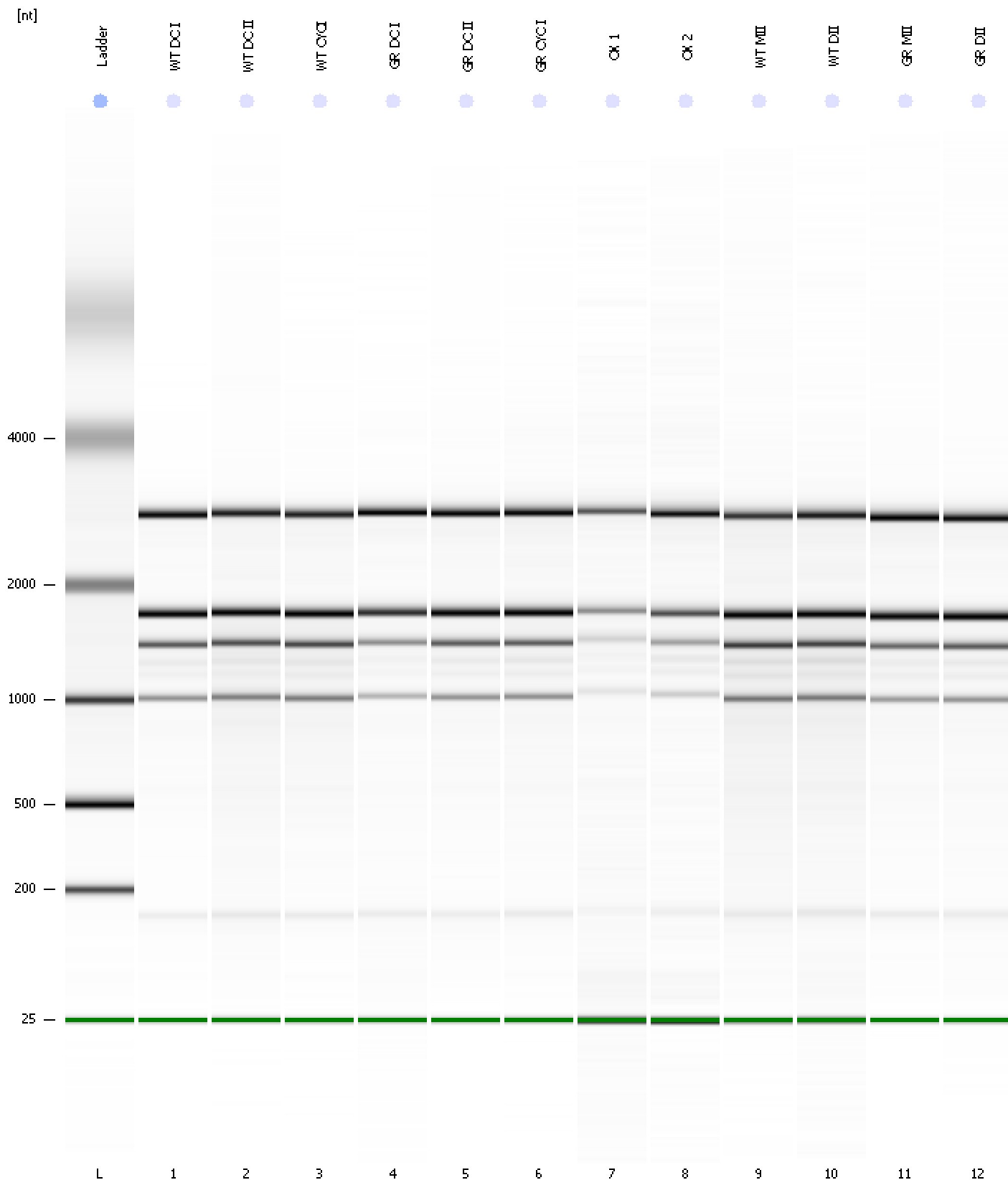
Fragment table for sample 12 : GR DII

Name	Start Size [nt]	End Size [nt]	Area	% of total Area
18S	1,609	1,936	21.6	21.5
25S	2,750	3,348	18.7	18.6

Assay Class: Plant RNA Nano
Data Path: C:\... bioanalyzer\2100 expert\data\2016-07-13\2016-07-13_003.xad

Created: 7/13/2016 2:57:23 PM
Modified: 7/13/2016 3:21:14 PM

Gel Image



Assay Class: Plant RNA Nano
 Data Path: C:\... bioanalyzer\2100 expert\data\2016-07-13\2016-07-13_003.xad

Created: 7/13/2016 2:57:23 PM
 Modified: 7/13/2016 3:21:14 PM

Run Logbook

Description	Number	Source	Category	Sub Category	Time	Time Zone	User	Host
Run ended on port 1 (Number of wells acquired: 13)		Instrument	Run		7/13/2016 3:21:11 PM	(GMT --07:00) Pacific Standard Time	UC Davis	D8XSMGH1
Run started on port 1 (File: C:\Program Files\Agilent\2100 bioanalyzer\2100 expert\data\2016-07-13\2016-07-13_003.xad)		Instrument	Run		7/13/2016 2:57:29 PM	(GMT --07:00) Pacific Standard Time	UC Davis	D8XSMGH1
Product Number : G2938B		Instrument	Run		7/13/2016 2:57:29 PM	(GMT --07:00) Pacific Standard Time	UC Davis	D8XSMGH1
Name :		Instrument	Run		7/13/2016 2:57:29 PM	(GMT --07:00) Pacific Standard Time	UC Davis	D8XSMGH1
Vendor : Agilent Technologies		Instrument	Run		7/13/2016 2:57:29 PM	(GMT --07:00) Pacific Standard Time	UC Davis	D8XSMGH1
Serial# : DE13701086		Instrument	Run		7/13/2016 2:57:29 PM	(GMT --07:00) Pacific Standard Time	UC Davis	D8XSMGH1
Firmware : C.01.069		Instrument	Run		7/13/2016 2:57:29 PM	(GMT --07:00) Pacific Standard Time	UC Davis	D8XSMGH1
Cartridge : Electrode		Instrument	Run		7/13/2016 2:57:29 PM	(GMT --07:00) Pacific Standard Time	UC Davis	D8XSMGH1