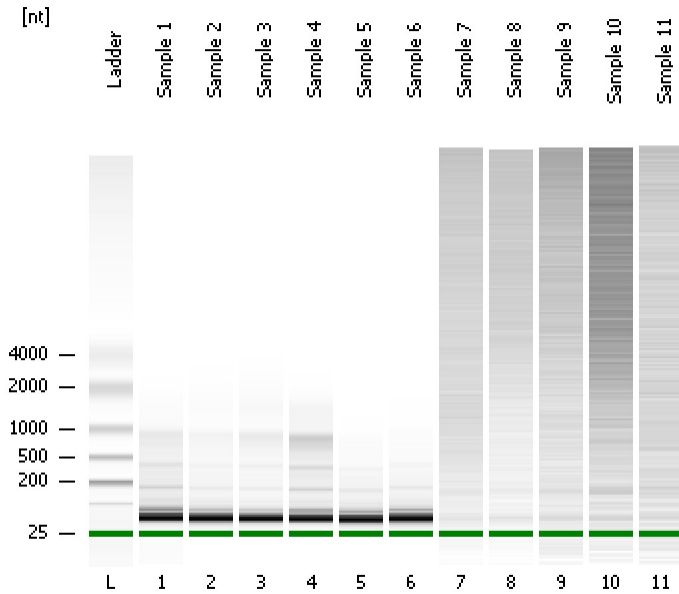


Assay Class: mRNA Pico
Data Path: C:\... bioanalyzer\2100 expert\data\2016-07-15\2016-07-15_002.xad

Created: 7/15/2016 11:51:39 AM
Modified: 7/15/2016 12:17:32 PM

Electrophoresis File Run Summary



Instrument Information:

Instrument Name: DE13701086 Firmware: C.01.069
Serial#: DE13701086 Type: G2938B

Assay Information:

Assay Origin Path: C:\Program Files\Agilent\2100 bioanalyzer\2100 expert\assays\RNA\mRNA Pico Series II.xsy

Assay Class: mRNA Pico
Version: 2.6
Assay Comments: mRNA Analysis pg sensitivity

© Copyright 2003 - 2009 Agilent Technologies, Inc.

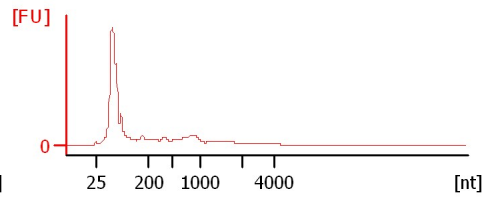
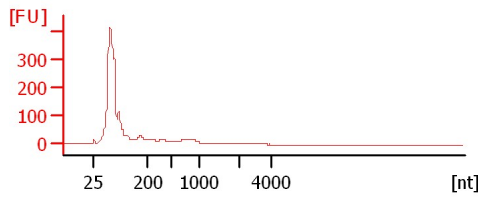
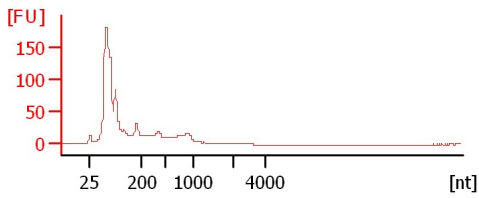
Chip Information:

Chip Lot #:
Reagent Kit Lot #:
Chip Comments:

Sample 1

Sample 2

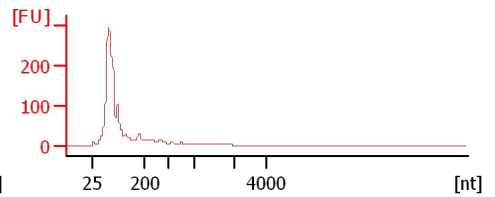
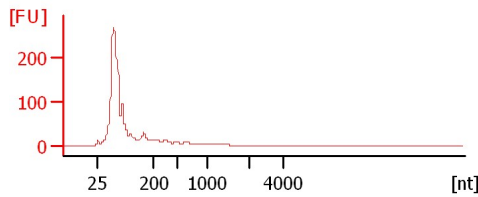
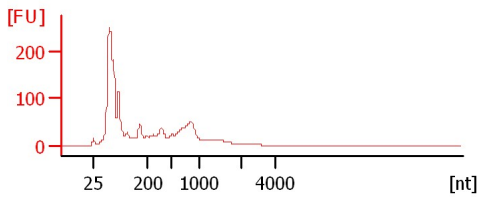
Sample 3



Sample 4

Sample 5

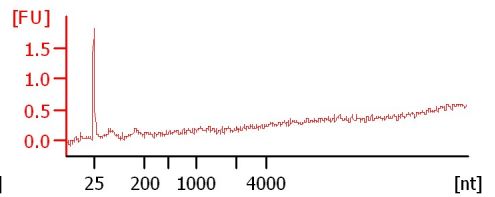
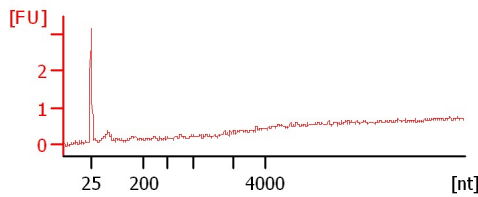
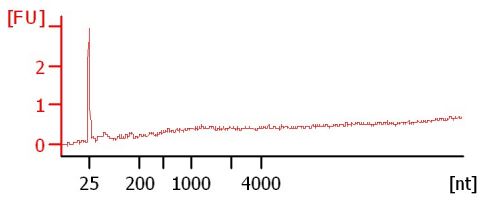
Sample 6



Sample 7

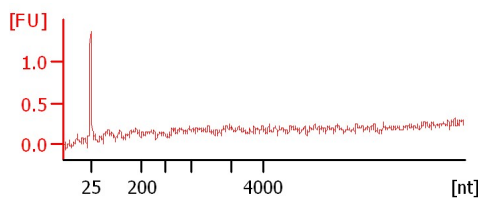
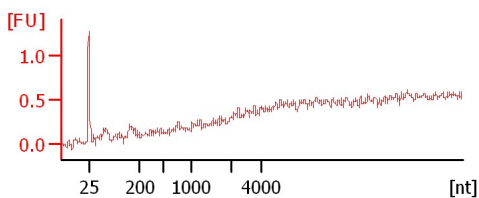
Sample 8

Sample 9



Sample 10

Sample 11



Assay Class: mRNA Pico
Data Path: C:\... bioanalyzer\2100 expert\data\2016-07-15\2016-07-15_002.xad

Created: 7/15/2016 11:51:39 AM
Modified: 7/15/2016 12:17:32 PM

Electrophoresis File Run Summary (Chip Summary)

Sample Name	Sample Comment	Status	Result Label	Result Color
Sample 1		✓		
Sample 2		✓		
Sample 3		✓		
Sample 4		✓		
Sample 5		✓		
Sample 6		✓		
Sample 7		✓		
Sample 8		✓		
Sample 9		✓		
Sample 10		✓		
Sample 11		✓		
Ladder		✓		

Chip Lot #

Reagent Kit Lot #

Chip Comments :

Assay Class: mRNA Pico
Data Path: C:\... bioanalyzer\2100 expert\data\2016-07-15\2016-07-15_002.xad

Created: 7/15/2016 11:51:39 AM
Modified: 7/15/2016 12:17:32 PM

Electrophoresis Assay Details

General Analysis Settings

Number of Available Sample and Ladder Wells (Max.) : 12

Minimum Visible Range [s] : 14

Maximum Visible Range [s] : 85

Start Analysis Time Range [s] : 15

End Analysis Time Range [s] : 84

Ladder Concentration [pg/ μ l] : 1000

Lower Marker Concentration [pg/ μ l] : 0

Upper Marker Concentration [pg/ μ l] : 0

Used Lower Marker for Quantitation

Standard Curve Fit is Logarithmic

Show Data Aligned to Lower Marker

Integrator Settings

Integration Start Time [s] : 15

Integration End Time [s] : 84

Slope Threshold : 0.2

Height Threshold [FU] : 0.5

Area Threshold : 0.1

Width Threshold [s] : 0.2

Baseline Plateau [s] : 0.5

Filter Settings

Filter Width [s] : 0.5

Polynomial Order : 4

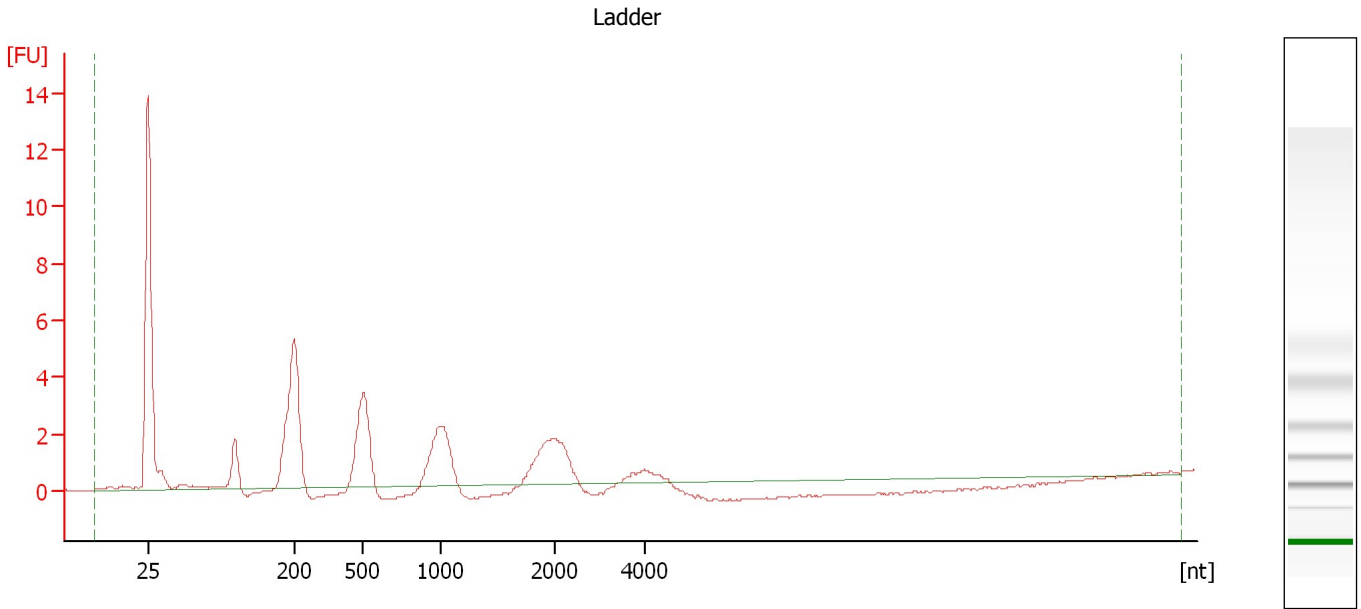
Ladder

Ladder Peak	Size
1	25
2	200
3	500
4	1000
5	2000
6	4000

Assay Class: mRNA Pico
Data Path: C:\... bioanalyzer\2100 expert\data\2016-07-15\2016-07-15_002.xad

Created: 7/15/2016 11:51:39 AM
Modified: 7/15/2016 12:17:32 PM

Electropherogram Summary



Overall Results for Ladder

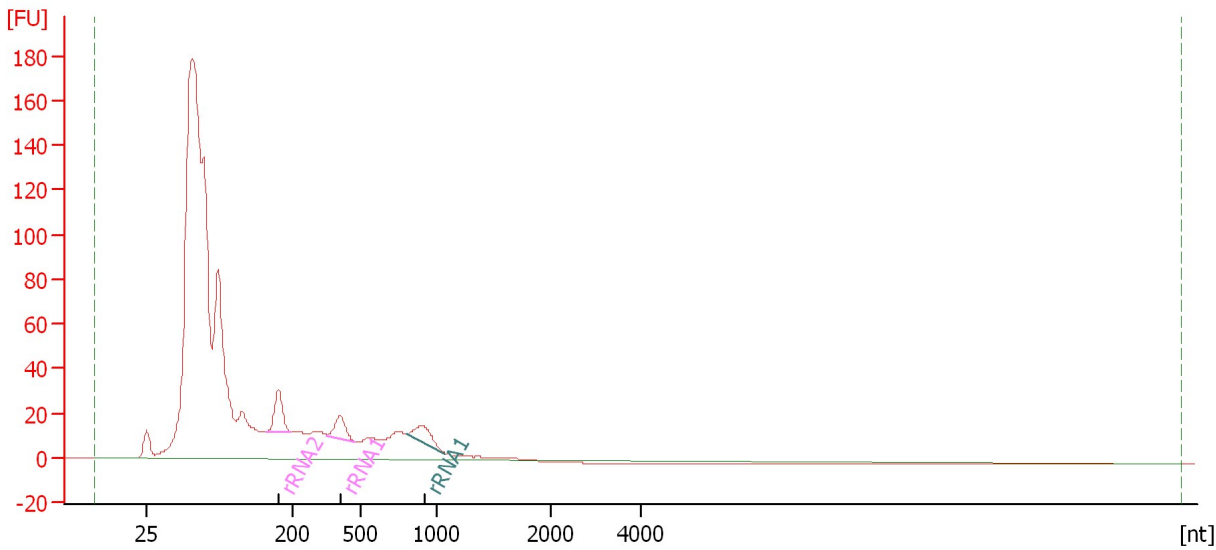
RNA Area: 47.7 RNA Concentration: 1,000 pg/μl

Assay Class: mRNA Pico
Data Path: C:\... bioanalyzer\2100 expert\data\2016-07-15\2016-07-15_002.xad

Created: 7/15/2016 11:51:39 AM
Modified: 7/15/2016 12:17:32 PM

Electropherogram Summary Continued ...

Sample 1



Overall Results for sample 1 : Sample 1

RNA Area: 1,978.5 rRNA Contamination: 4.3 %
RNA Concentration: 41,485 pg/μl

Fragment table for sample 1 : Sample 1

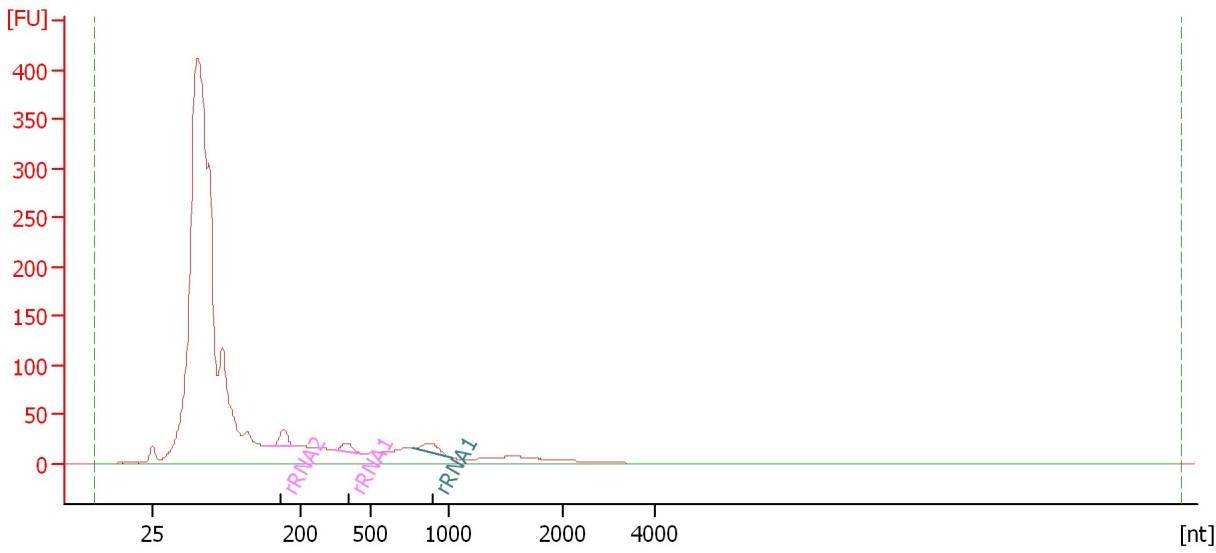
Name	Start Size [nt]	End Size [nt]	Area	% of total Area
rRNA2	169	198	39.0	2.0
rRNA1	354	476	23.8	1.2
rRNA1	805	1,069	23.1	1.2

Assay Class: mRNA Pico
Data Path: C:\... bioanalyzer\2100 expert\data\2016-07-15\2016-07-15_002.xad

Created: 7/15/2016 11:51:39 AM
Modified: 7/15/2016 12:17:32 PM

Electropherogram Summary Continued ...

Sample 2



Overall Results for sample 2 : Sample 2

RNA Area: 3,880.2 rRNA Contamination: 2.4 %
RNA Concentration: 81,359 pg/μl

Fragment table for sample 2 : Sample 2

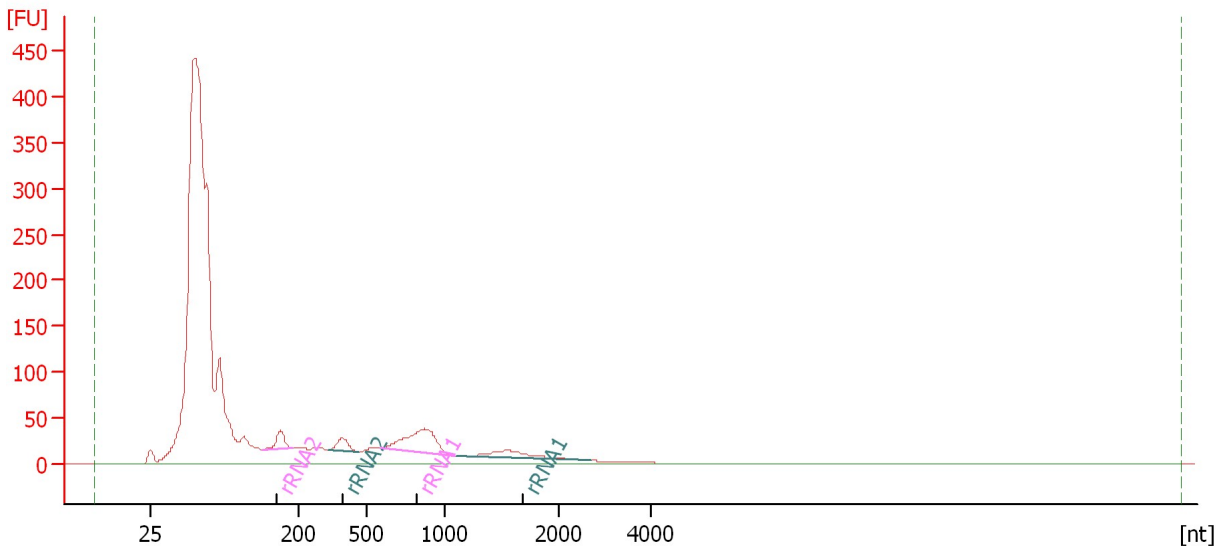
Name	Start Size [nt]	End Size [nt]	Area	% of total Area
rRNA2	160	194	38.1	1.0
rRNA1	343	467	23.8	0.6
rRNA1	775	1,050	31.9	0.8

Assay Class: mRNA Pico
Data Path: C:\... bioanalyzer\2100 expert\data\2016-07-15\2016-07-15_002.xad

Created: 7/15/2016 11:51:39 AM
Modified: 7/15/2016 12:17:32 PM

Electropherogram Summary Continued ...

Sample 3



Overall Results for sample 3 : Sample 3

RNA Area: 4,152.0 rRNA Contamination: 7.1 %
RNA Concentration: 87,060 pg/μl

Fragment table for sample 3 : Sample 3

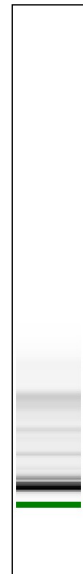
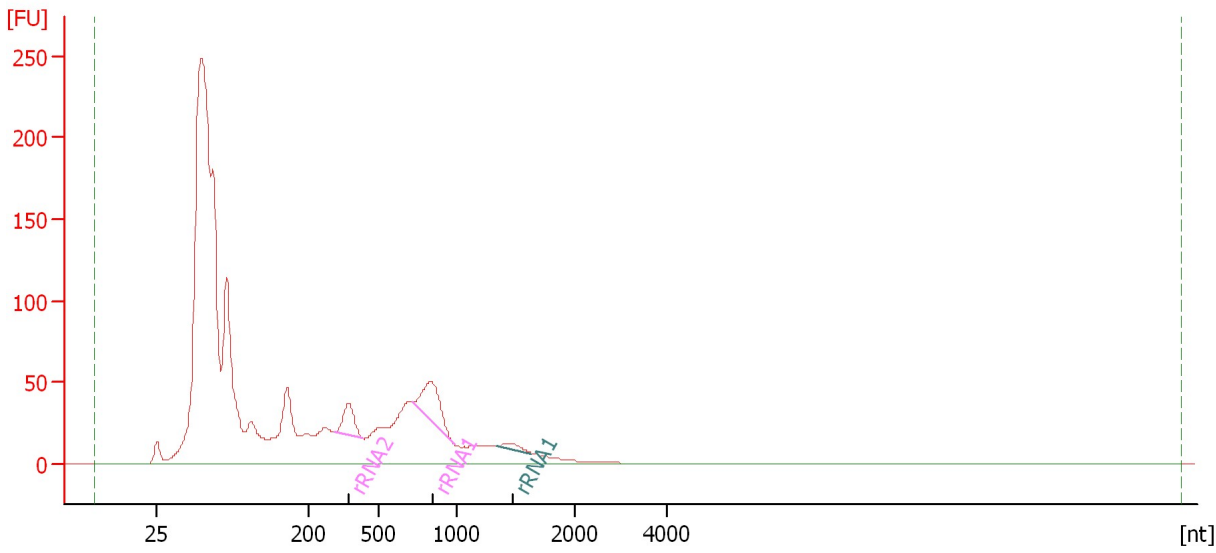
Name	Start Size [nt]	End Size [nt]	Area	% of total Area
rRNA2	158	192	41.8	1.0
rRNA2	330	458	35.9	0.9
rRNA1	587	1,084	155.6	3.7
rRNA1	1,112	2,685	61.2	1.5

Assay Class: mRNA Pico
Data Path: C:\... bioanalyzer\2100 expert\data\2016-07-15\2016-07-15_002.xad

Created: 7/15/2016 11:51:39 AM
Modified: 7/15/2016 12:17:32 PM

Electropherogram Summary Continued ...

Sample 4



Overall Results for sample 4 : Sample 4

RNA Area: 3,031.2 rRNA Contamination: 4.7 %
RNA Concentration: 63,558 pg/μl

Fragment table for sample 4 : Sample 4

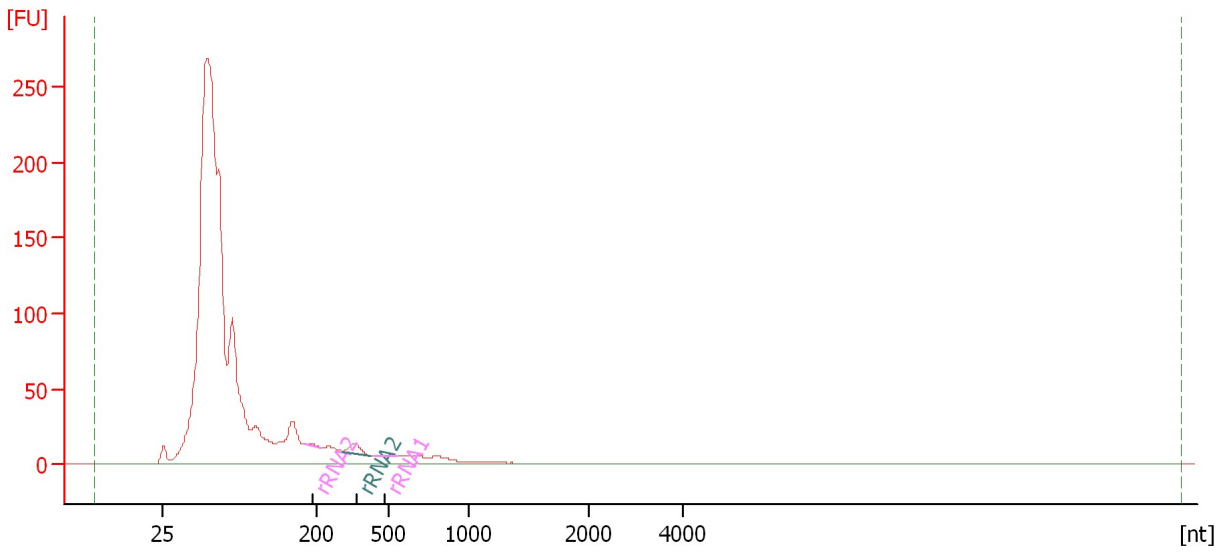
Name	Start Size [nt]	End Size [nt]	Area	% of total Area
rRNA2	317	436	49.3	1.6
rRNA1	719	982	82.8	2.7
rRNA1	1,337	1,636	9.2	0.3

Assay Class: mRNA Pico
Data Path: C:\... bioanalyzer\2100 expert\data\2016-07-15\2016-07-15_002.xad

Created: 7/15/2016 11:51:39 AM
Modified: 7/15/2016 12:17:32 PM

Electropherogram Summary Continued ...

Sample 5



Overall Results for sample 5 : Sample 5

RNA Area: 2,488.2 rRNA Contamination: 0.8 %
RNA Concentration: 52,172 pg/μl

Fragment table for sample 5 : Sample 5

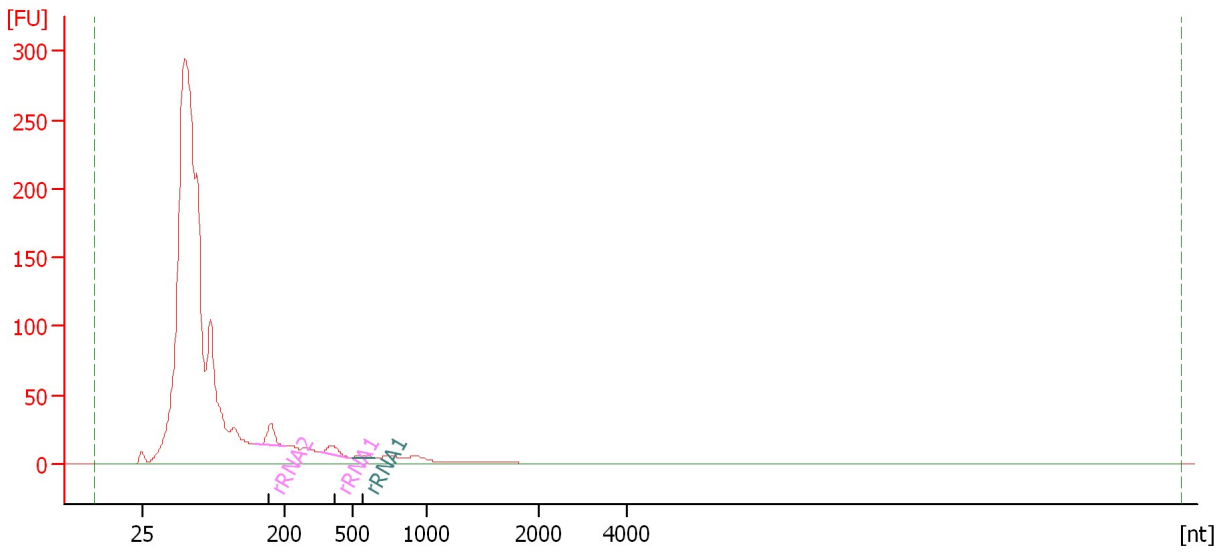
Name	Start Size [nt]	End Size [nt]	Area	% of total Area
rRNA2	186	216	2.2	0.1
rRNA2	306	425	15.8	0.6
rRNA1	439	543	1.6	0.1

Assay Class: mRNA Pico
Data Path: C:\... bioanalyzer\2100 expert\data\2016-07-15\2016-07-15_002.xad

Created: 7/15/2016 11:51:39 AM
Modified: 7/15/2016 12:17:32 PM

Electropherogram Summary Continued ...

Sample 6



Overall Results for sample 6 : Sample 6

RNA Area: 2,798.0 rRNA Contamination: 1.9 %
RNA Concentration: 58,668 pg/μl

Fragment table for sample 6 : Sample 6

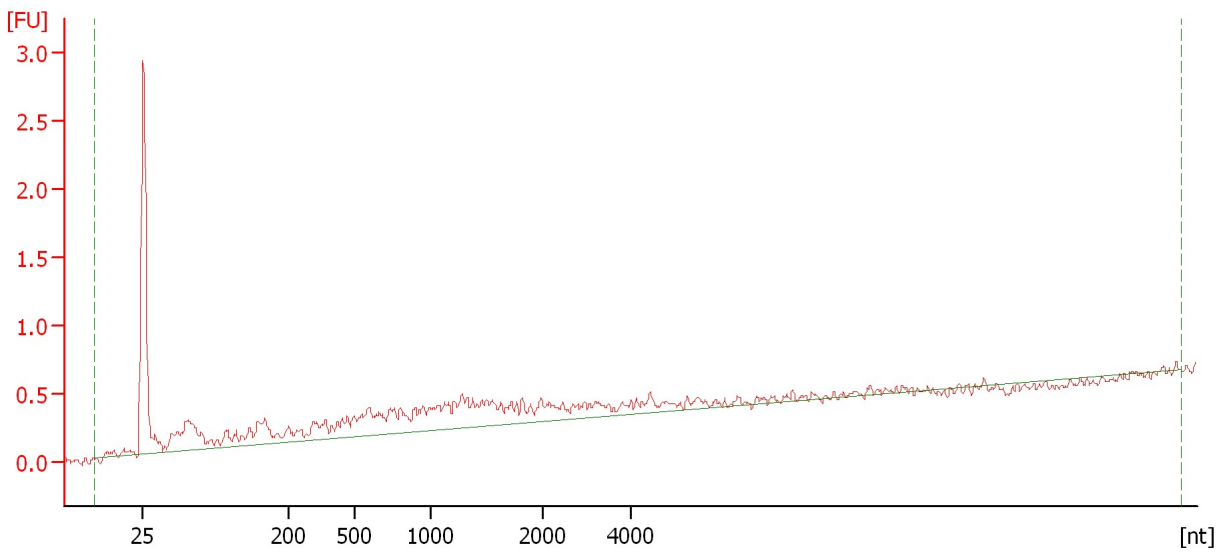
Name	Start Size [nt]	End Size [nt]	Area	% of total Area
rRNA2	161	197	33.6	1.2
rRNA1	359	480	16.4	0.6
rRNA1	498	652	2.2	0.1

Assay Class: mRNA Pico
Data Path: C:\... bioanalyzer\2100 expert\data\2016-07-15\2016-07-15_002.xad

Created: 7/15/2016 11:51:39 AM
Modified: 7/15/2016 12:17:32 PM

Electropherogram Summary Continued ...

Sample 7



Overall Results for sample 7 : Sample 7

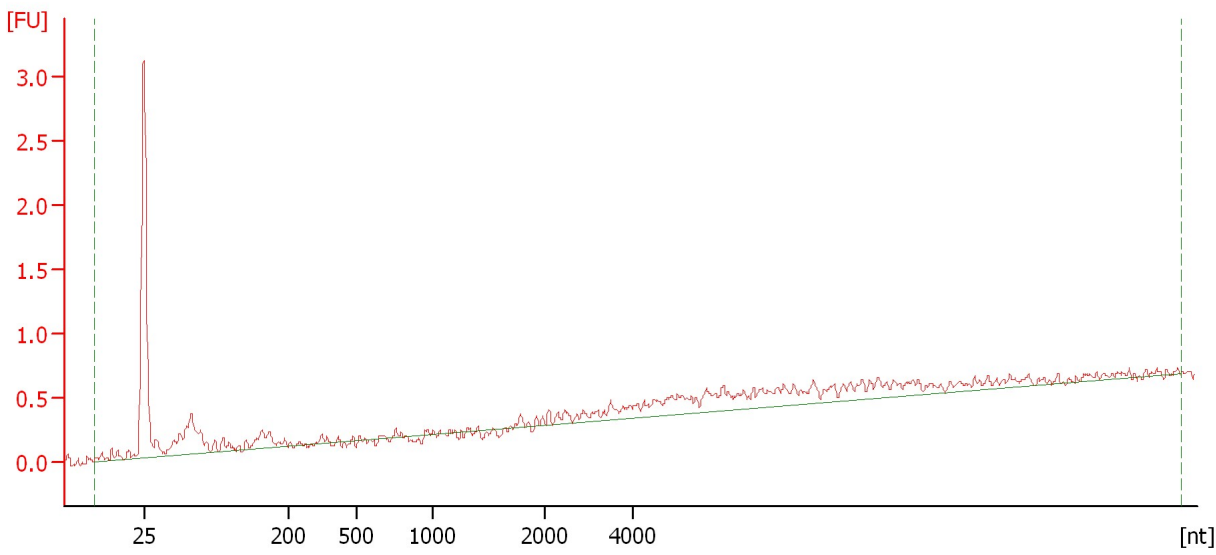
RNA Area:	12.2	rRNA Contamination:	0.0 %
RNA Concentration:	256 pg/μl		

Assay Class: mRNA Pico
Data Path: C:\... bioanalyzer\2100 expert\data\2016-07-15\2016-07-15_002.xad

Created: 7/15/2016 11:51:39 AM
Modified: 7/15/2016 12:17:32 PM

Electropherogram Summary Continued ...

Sample 8



Overall Results for sample 8 : Sample 8

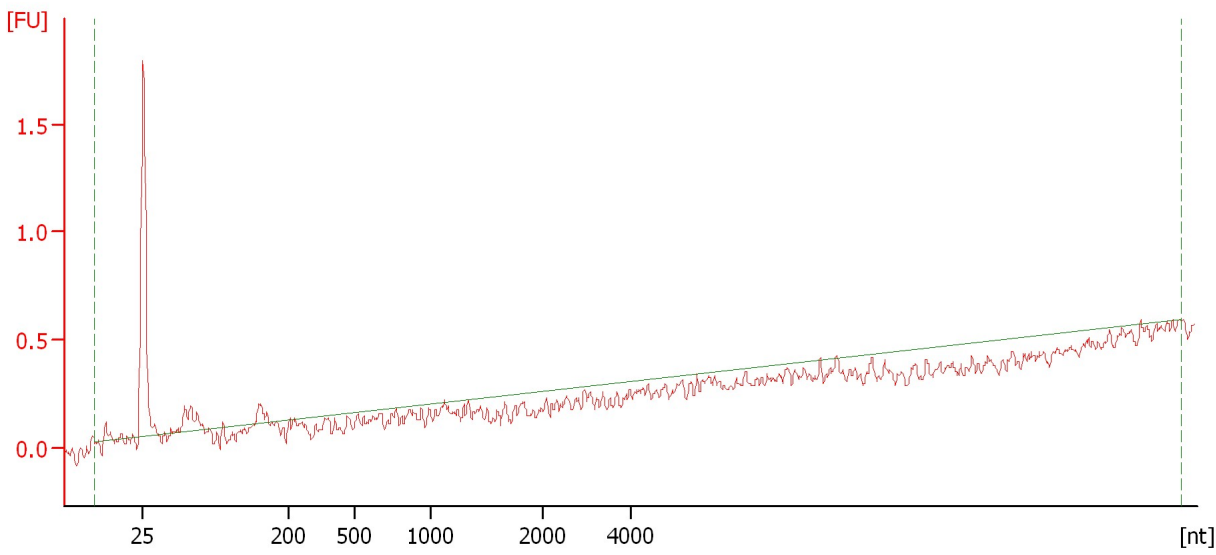
RNA Area: 9.1 rRNA Contamination: 0.0 %
RNA Concentration: 191 pg/μl

Assay Class: mRNA Pico
Data Path: C:\... bioanalyzer\2100 expert\data\2016-07-15\2016-07-15_002.xad

Created: 7/15/2016 11:51:39 AM
Modified: 7/15/2016 12:17:32 PM

Electropherogram Summary Continued ...

Sample 9



Overall Results for sample 9 : Sample 9

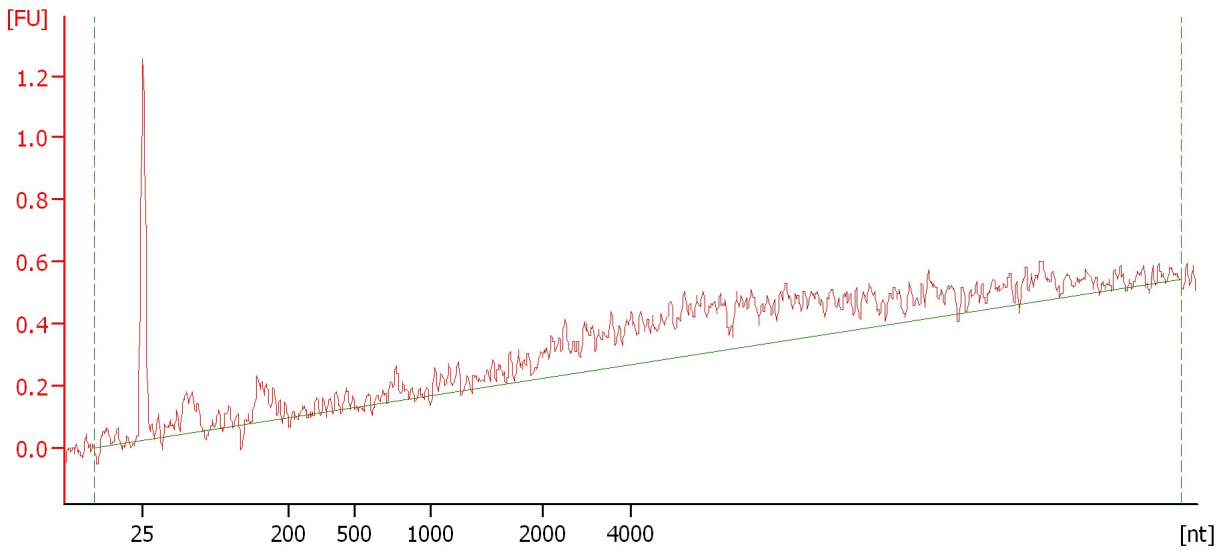
RNA Area: 0.8 rRNA Contamination: 0.0 %
RNA Concentration: 16 pg/μl

Assay Class: mRNA Pico
Data Path: C:\... bioanalyzer\2100 expert\data\2016-07-15\2016-07-15_002.xad

Created: 7/15/2016 11:51:39 AM
Modified: 7/15/2016 12:17:32 PM

Electropherogram Summary Continued ...

Sample 10



Overall Results for sample 10 : Sample 10

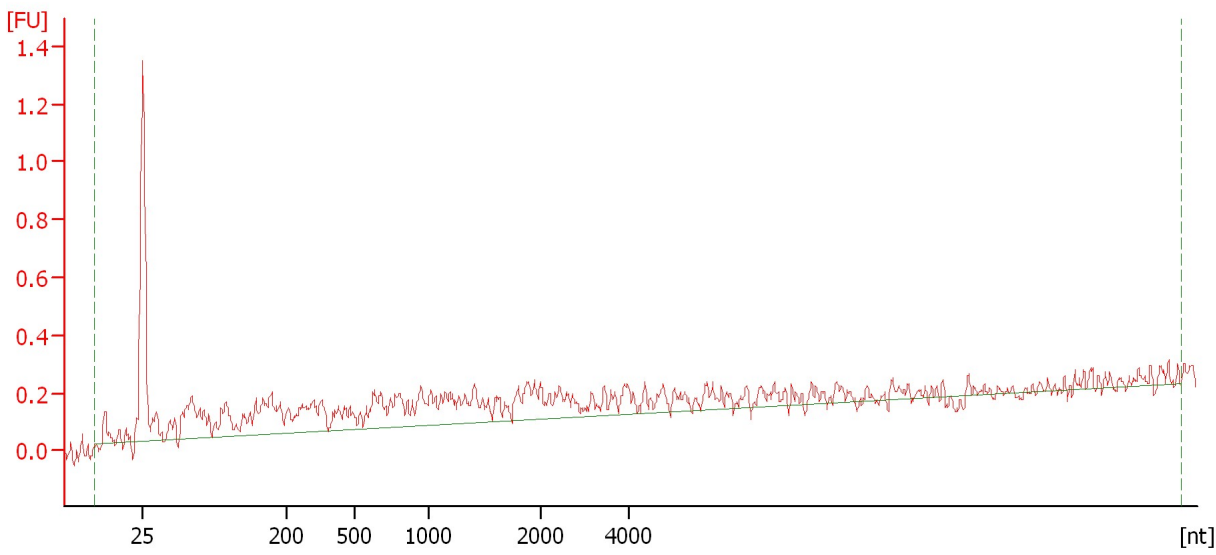
RNA Area: 9.5 rRNA Contamination: 0.0 %
RNA Concentration: 199 pg/μl

Assay Class: mRNA Pico
Data Path: C:\... bioanalyzer\2100 expert\data\2016-07-15\2016-07-15_002.xad

Created: 7/15/2016 11:51:39 AM
Modified: 7/15/2016 12:17:32 PM

Electropherogram Summary Continued ...

Sample 11



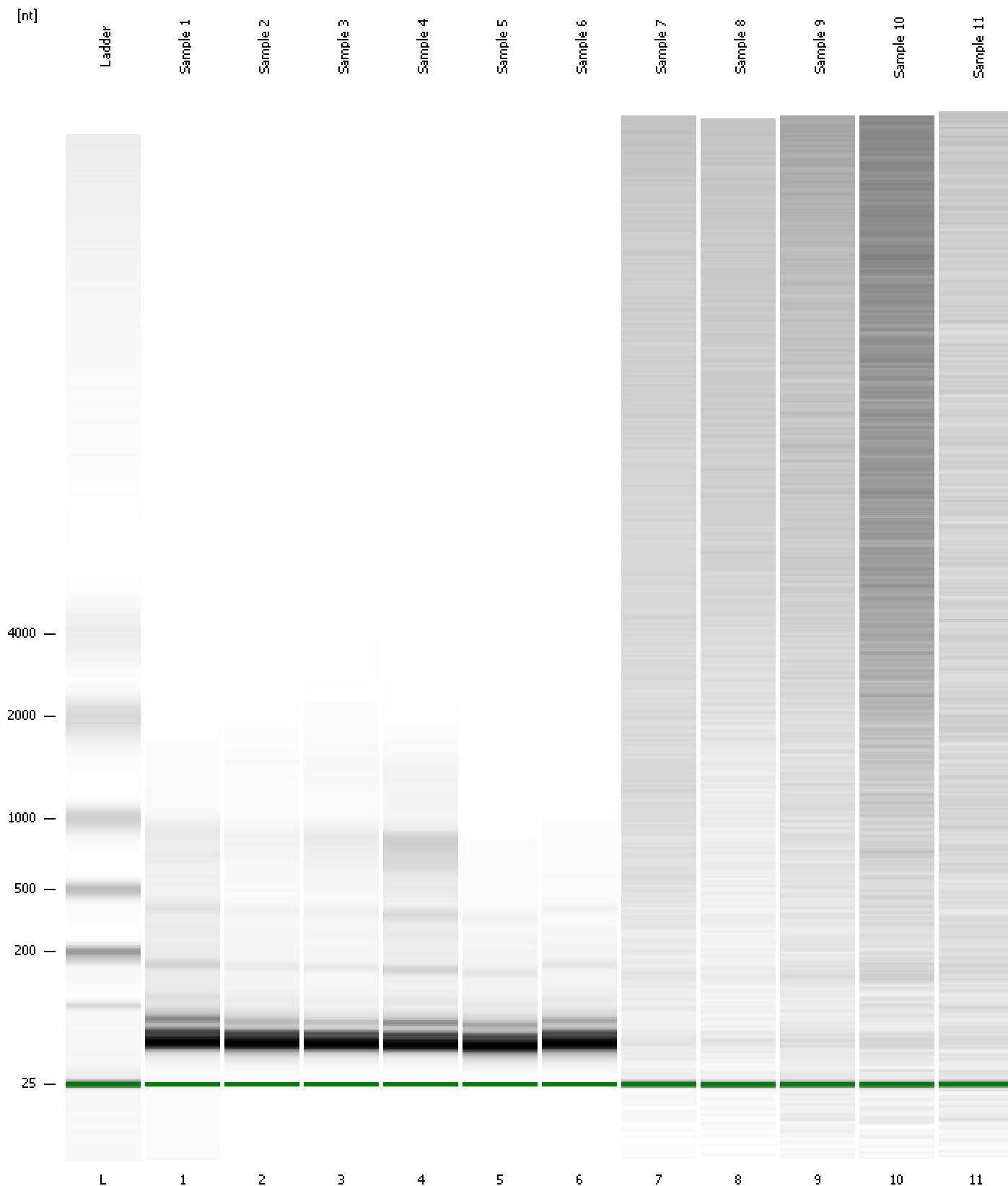
Overall Results for sample 11 : Sample 11

RNA Area: 8.1 rRNA Contamination: 0.0 %
RNA Concentration: 171 pg/μl

Assay Class: mRNA Pico
Data Path: C:\... bioanalyzer\2100 expert\data\2016-07-15\2016-07-15_002.xad

Created: 7/15/2016 11:51:39 AM
Modified: 7/15/2016 12:17:32 PM

Gel Image



Assay Class: mRNA Pico
 Data Path: C:\... bioanalyzer\2100 expert\data\2016-07-15\2016-07-15_002.xad

Created: 7/15/2016 11:51:39 AM
 Modified: 7/15/2016 12:17:32 PM

Run Logbook

Description	Number	Source	Category	Sub Category	Time	Time Zone	User	Host
Run ended on port 1 (Number of wells acquired: 12)		Instrument	Run		7/15/2016 12:17:32 PM	(GMT --07:00) Pacific Standard Time	UC Davis	D8XSMGH1
Run started on port 1 (File: C:\Program Files\Agilent\2100 bioanalyzer\2100 expert\data\2016-07-15\2016-07-15_002.xad)		Instrument	Run		7/15/2016 11:51:45 AM	(GMT --07:00) Pacific Standard Time	UC Davis	D8XSMGH1
Product Number : G2938B		Instrument	Run		7/15/2016 11:51:45 AM	(GMT --07:00) Pacific Standard Time	UC Davis	D8XSMGH1
Name :		Instrument	Run		7/15/2016 11:51:45 AM	(GMT --07:00) Pacific Standard Time	UC Davis	D8XSMGH1
Vendor : Agilent Technologies		Instrument	Run		7/15/2016 11:51:45 AM	(GMT --07:00) Pacific Standard Time	UC Davis	D8XSMGH1
Serial# : DE13701086		Instrument	Run		7/15/2016 11:51:44 AM	(GMT --07:00) Pacific Standard Time	UC Davis	D8XSMGH1
Firmware : C.01.069		Instrument	Run		7/15/2016 11:51:44 AM	(GMT --07:00) Pacific Standard Time	UC Davis	D8XSMGH1
Cartridge : Electrode		Instrument	Run		7/15/2016 11:51:44 AM	(GMT --07:00) Pacific Standard Time	UC Davis	D8XSMGH1