

Assay Class: Prokaryote Total RNA Nano  
Data Path: C:\... bioanalyzer\2100 expert\data\2016-08-02\2016-08-02\_002.xad

Created: 8/2/2016 5:43:59 PM  
Modified: 8/2/2016 6:07:47 PM

### Electrophoresis File Run Summary

#### Instrument Information:

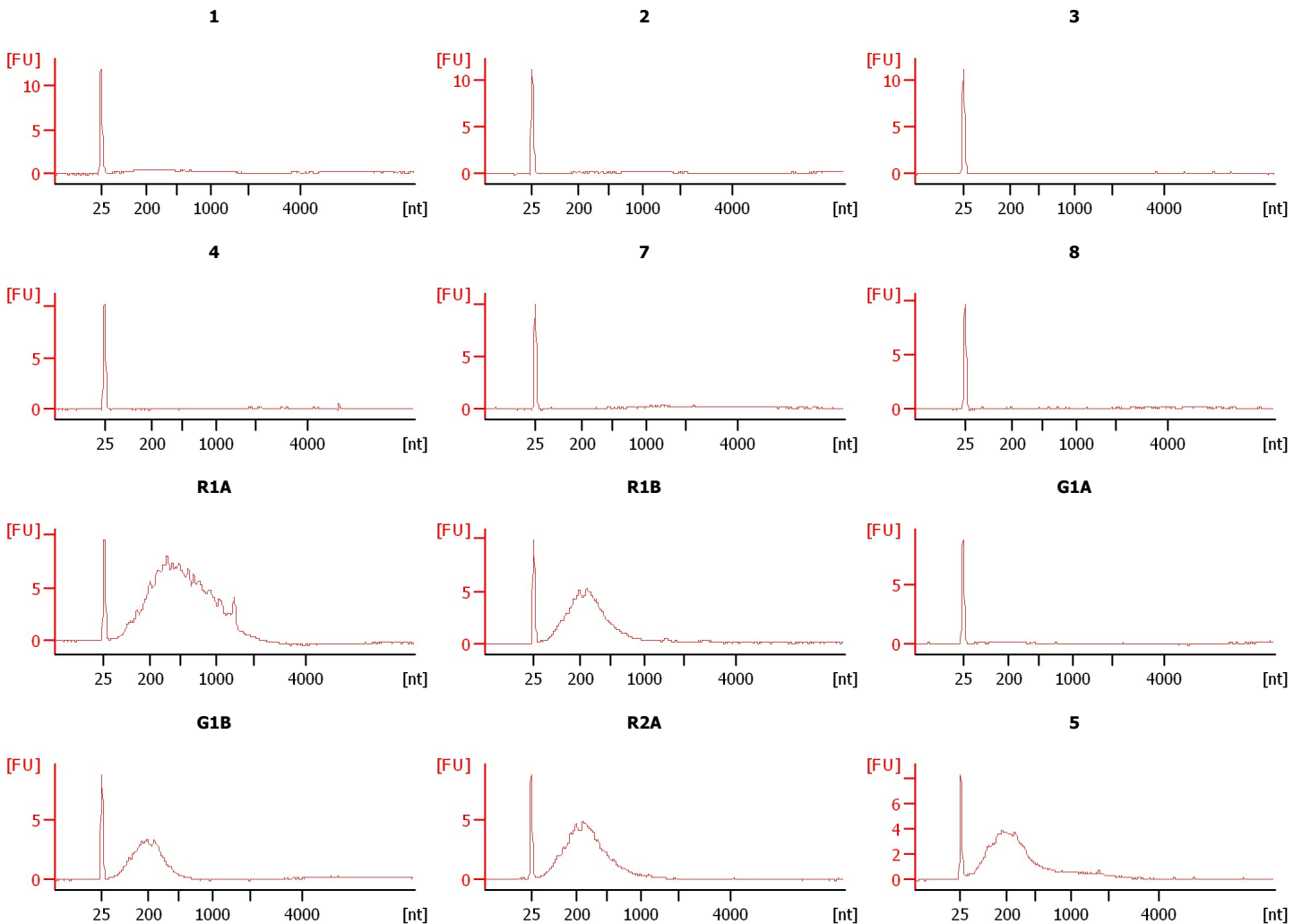
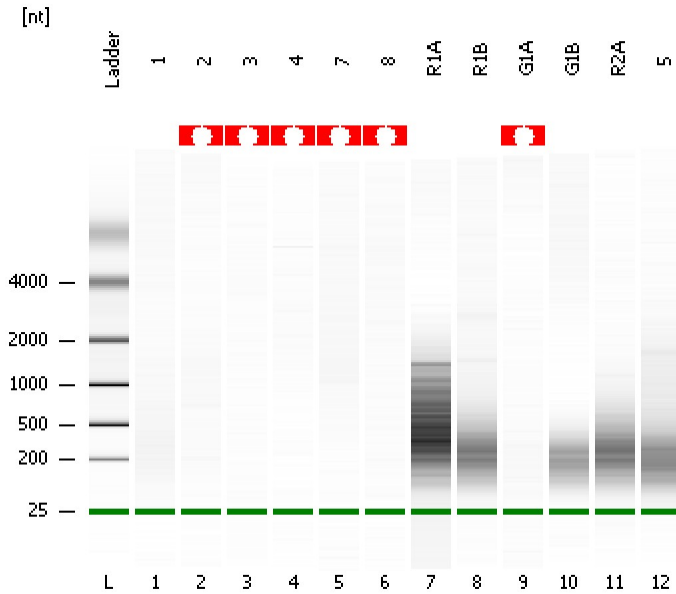
Instrument Name: DE13701086      Firmware: C.01.069  
Serial#: DE13701086      Type: G2938B

#### Assay Information:

Assay Origin Path: C:\Program Files\Agilent\2100 bioanalyzer\2100 expert\assays\RNA\Prokaryote Total RNA Nano Series II.xsy  
Assay Class: Prokaryote Total RNA Nano  
Version: 2.5  
Assay Comments: Total RNA Analysis ng sensitivity (Prokaryote)  
© Copyright 2003 - 2009 Agilent Technologies, Inc.

#### Chip Information:

Chip Lot #:      Reagent Kit Lot #:      Chip Comments:



Assay Class: Prokaryote Total RNA Nano  
Data Path: C:\... bioanalyzer\2100 expert\data\2016-08-02\2016-08-02\_002.xad

Created: 8/2/2016 5:43:59 PM  
Modified: 8/2/2016 6:07:47 PM

**Electrophoresis File Run Summary (Chip Summary)**

Sample Name	Sample Comment	Status	Result Label	Result Color
1		✓		
2		✓		
3		✓		
4		✓		
7		✓		
8		✓		
R1A		✓		
R1B		✓		
G1A		✓		
G1B		✓		
R2A		✓		
5		✓		
Ladder		✓		

**Chip Lot #**

**Reagent Kit Lot #**

**Chip Comments :**

Assay Class: Prokaryote Total RNA Nano  
Data Path: C:\... bioanalyzer\2100 expert\data\2016-08-02\2016-08-02\_002.xad

Created: 8/2/2016 5:43:59 PM  
Modified: 8/2/2016 6:07:47 PM

**Electrophoresis Assay Details**

**General Analysis Settings**

Number of Available Sample and Ladder Wells (Max.) : 13  
Minimum Visible Range [s] : 17  
Maximum Visible Range [s] : 70  
Start Analysis Time Range [s] : 19  
End Analysis Time Range [s] : 69  
Ladder Concentration [ng/μl] : 150  
Lower Marker Concentration [ng/μl] : 0  
Upper Marker Concentration [ng/μl] : 0  
Used Lower Marker for Quantitation  
Standard Curve Fit is Logarithmic  
Show Data Aligned to Lower Marker

**Integrator Settings**

Integration Start Time [s] : 19  
Integration End Time [s] : 69  
Slope Threshold : 0.6  
Height Threshold [FU] : 0.5  
Area Threshold : 0.2  
Width Threshold [s] : 0.5  
Baseline Plateau [s] : 6

**Filter Settings**

Filter Width [s] : 0.5  
Polynomial Order : 4

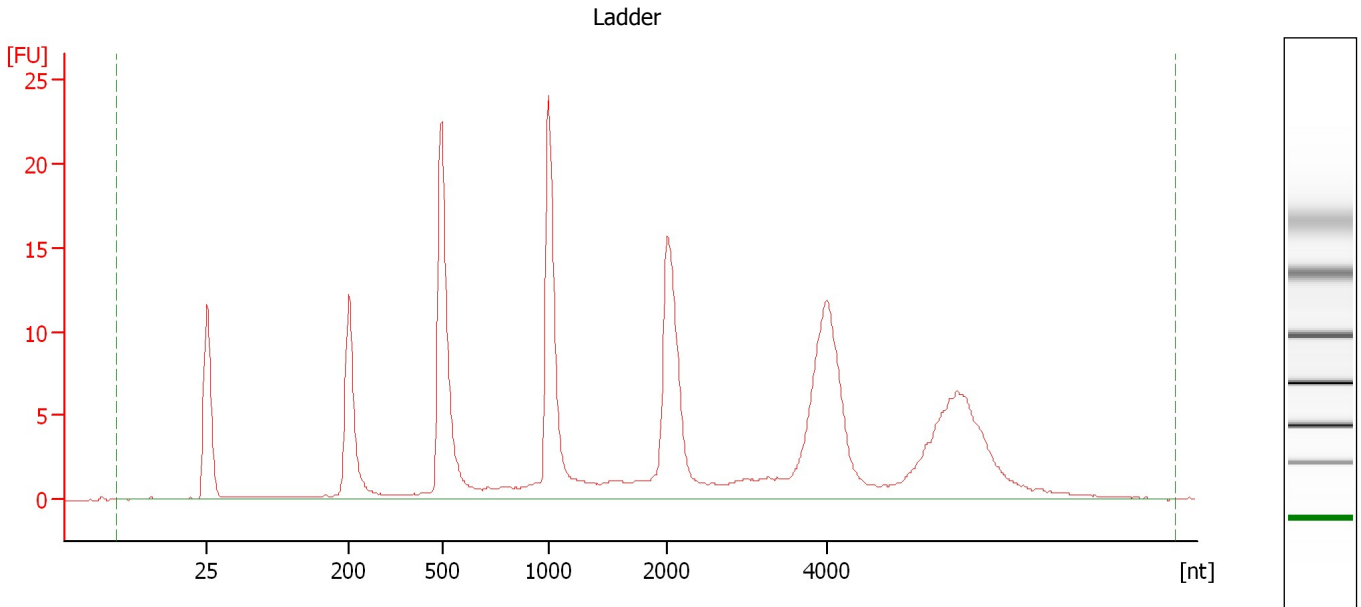
**Ladder**

Ladder Peak	Size
1	25
2	200
3	500
4	1000
5	2000
6	4000

Assay Class: Prokaryote Total RNA Nano  
Data Path: C:\... bioanalyzer\2100 expert\data\2016-08-02\2016-08-02\_002.xad

Created: 8/2/2016 5:43:59 PM  
Modified: 8/2/2016 6:07:47 PM

**Electropherogram Summary**



**Overall Results for Ladder**

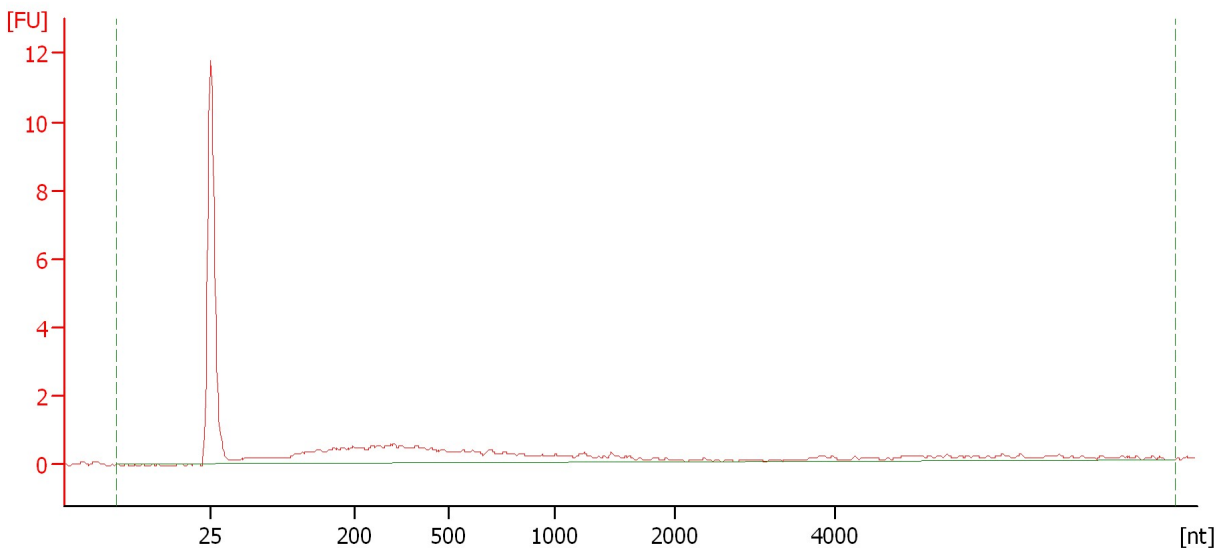
RNA Area: 214.0                      RNA Concentration: 150 ng/μl

Assay Class: Prokaryote Total RNA Nano  
Data Path: C:\... bioanalyzer\2100 expert\data\2016-08-02\2016-08-02\_002.xad

Created: 8/2/2016 5:43:59 PM  
Modified: 8/2/2016 6:07:47 PM

**Electropherogram Summary Continued ...**

1



**Overall Results for sample 1 : 1**

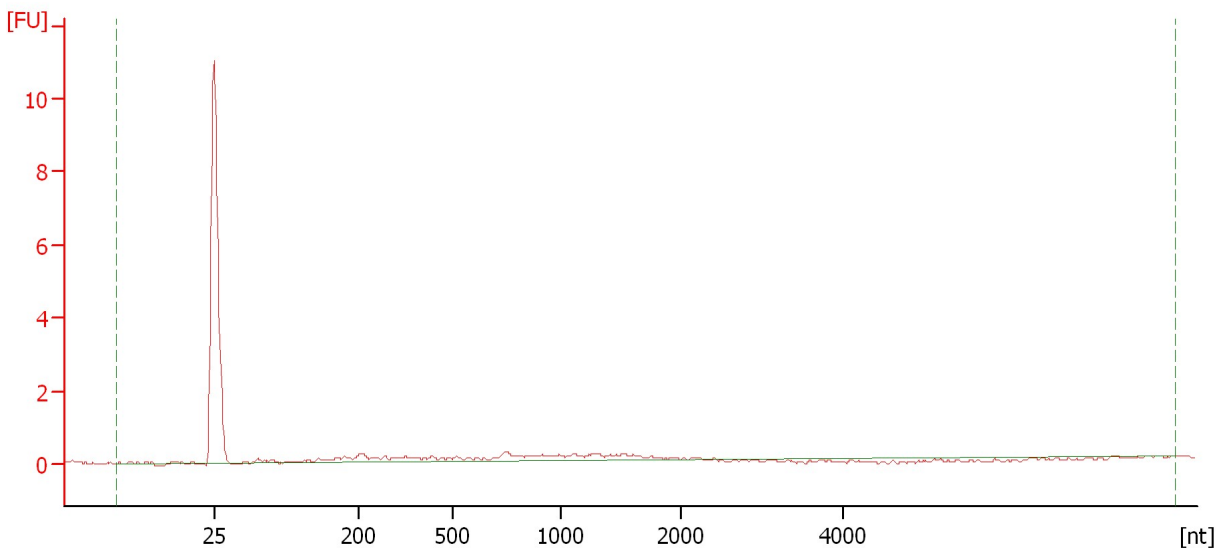
RNA Area:	21.6	rRNA Ratio [23s / 16s]:	0.0
RNA Concentration:	15 ng/μl	RNA Integrity Number (RIN):	1 (B.02.08)

Assay Class: Prokaryote Total RNA Nano  
Data Path: C:\... bioanalyzer\2100 expert\data\2016-08-02\2016-08-02\_002.xad

Created: 8/2/2016 5:43:59 PM  
Modified: 8/2/2016 6:07:47 PM

**Electropherogram Summary Continued ...**

2



**Overall Results for sample 2 : 2**

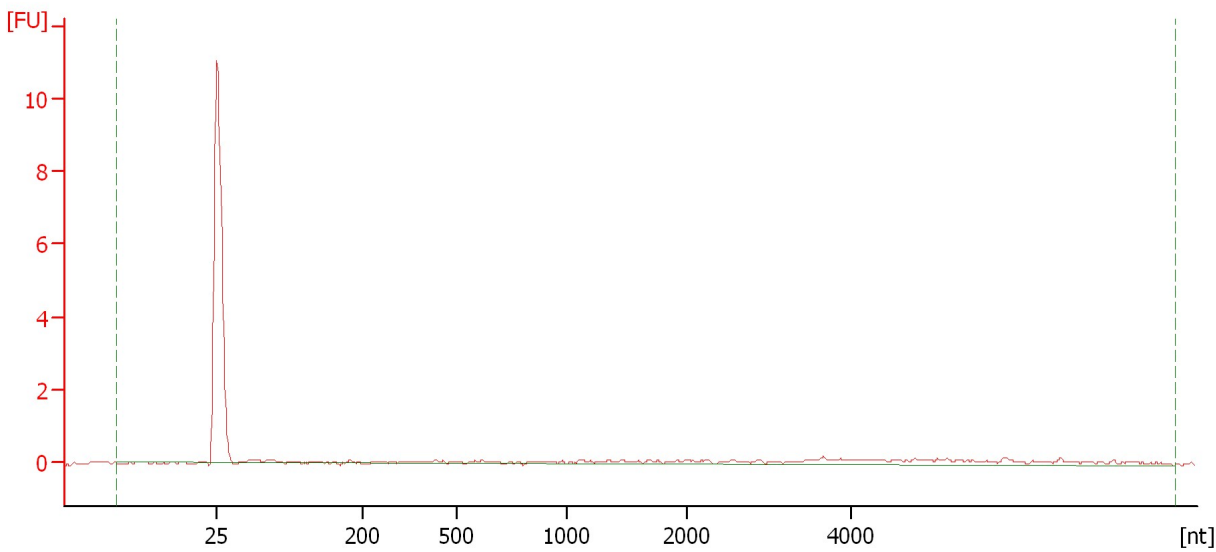
RNA Area:	6.6	rRNA Ratio [23s / 16s]:	0.0
RNA Concentration:	5 ng/μl	RNA Integrity Number (RIN):	N/A (B.02.08)

Assay Class: Prokaryote Total RNA Nano  
Data Path: C:\... bioanalyzer\2100 expert\data\2016-08-02\2016-08-02\_002.xad

Created: 8/2/2016 5:43:59 PM  
Modified: 8/2/2016 6:07:47 PM

**Electropherogram Summary Continued ...**

3



**Overall Results for sample 3 : 3**

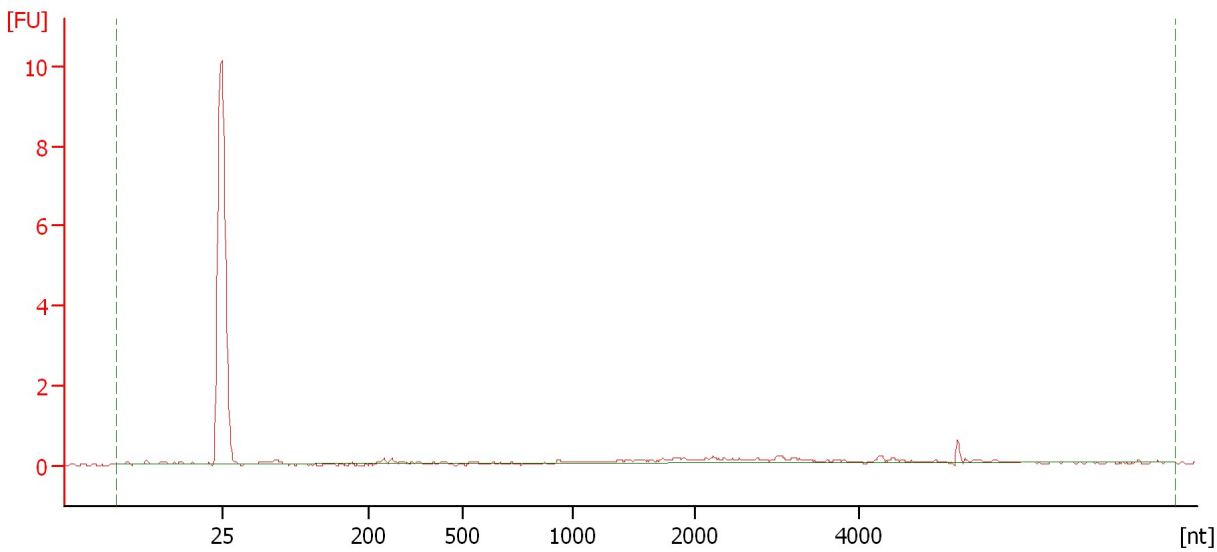
RNA Area:	6.4	rRNA Ratio [23s / 16s]:	0.0
RNA Concentration:	4 ng/μl	RNA Integrity Number (RIN):	N/A (B.02.08)

Assay Class: Prokaryote Total RNA Nano  
Data Path: C:\... bioanalyzer\2100 expert\data\2016-08-02\2016-08-02\_002.xad

Created: 8/2/2016 5:43:59 PM  
Modified: 8/2/2016 6:07:47 PM

**Electropherogram Summary Continued ...**

4



**Overall Results for sample 4 : 4**

RNA Area:	3.3	rRNA Ratio [23s / 16s]:	0.0
RNA Concentration:	2 ng/μl	RNA Integrity Number (RIN):	N/A (B.02.08)

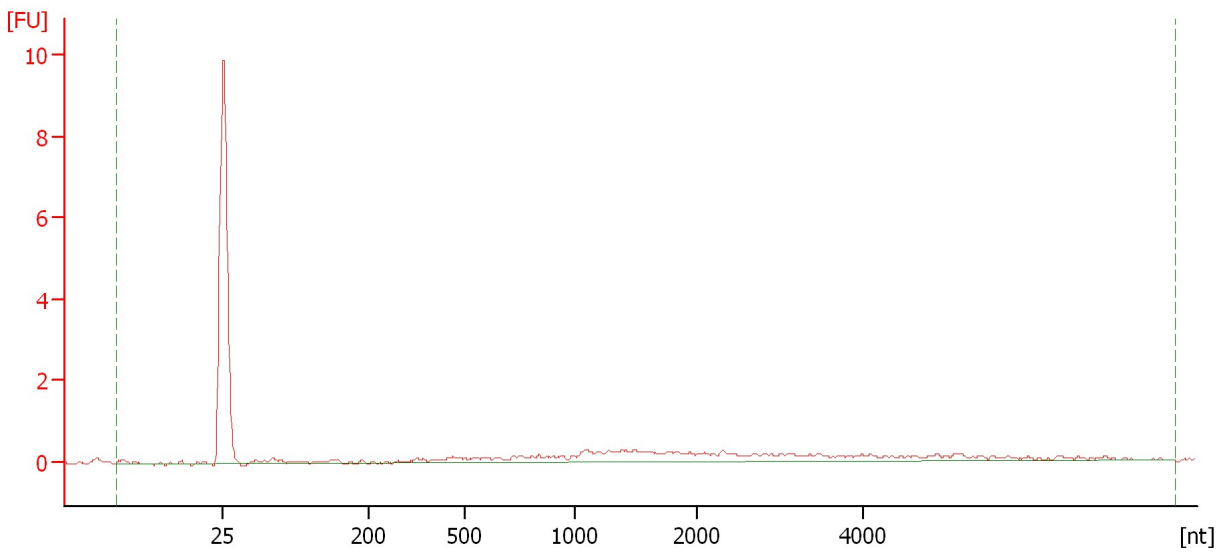


Assay Class: Prokaryote Total RNA Nano  
Data Path: C:\... bioanalyzer\2100 expert\data\2016-08-02\2016-08-02\_002.xad

Created: 8/2/2016 5:43:59 PM  
Modified: 8/2/2016 6:07:47 PM

**Electropherogram Summary Continued ...**

7



**Overall Results for sample 5 : 7**

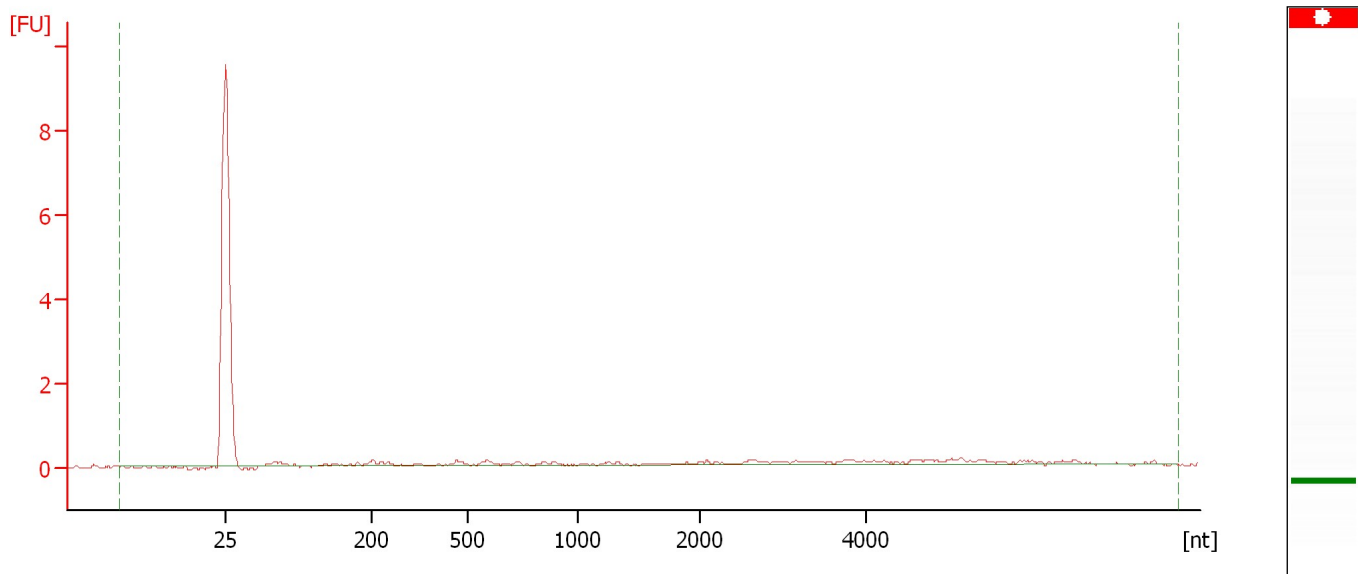
RNA Area:	9.4	rRNA Ratio [23s / 16s]:	0.0
RNA Concentration:	7 ng/μl	RNA Integrity Number (RIN):	N/A (B.02.08)

Assay Class: Prokaryote Total RNA Nano  
Data Path: C:\... bioanalyzer\2100 expert\data\2016-08-02\2016-08-02\_002.xad

Created: 8/2/2016 5:43:59 PM  
Modified: 8/2/2016 6:07:47 PM

**Electropherogram Summary Continued ...**

8



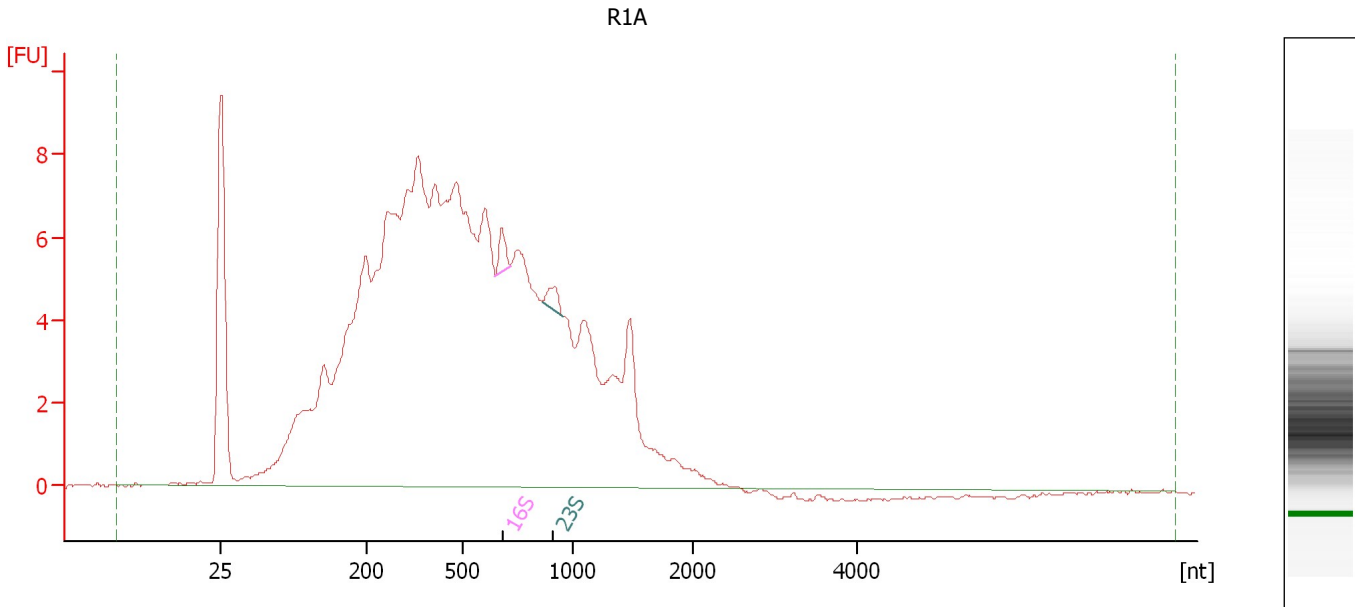
**Overall Results for sample 6 : 8**

RNA Area:	5.5	rRNA Ratio [23s / 16s]:	0.0
RNA Concentration:	4 ng/μl	RNA Integrity Number (RIN):	N/A (B.02.08)

Assay Class: Prokaryote Total RNA Nano  
Data Path: C:\... bioanalyzer\2100 expert\data\2016-08-02\2016-08-02\_002.xad

Created: 8/2/2016 5:43:59 PM  
Modified: 8/2/2016 6:07:47 PM

**Electropherogram Summary Continued ...**



**Overall Results for sample 7 : R1A**

RNA Area: 229.4                      rRNA Ratio [23s / 16s]: 0.9  
RNA Concentration: 161 ng/μl                      RNA Integrity Number (RIN): 2.6 (B.02.08)

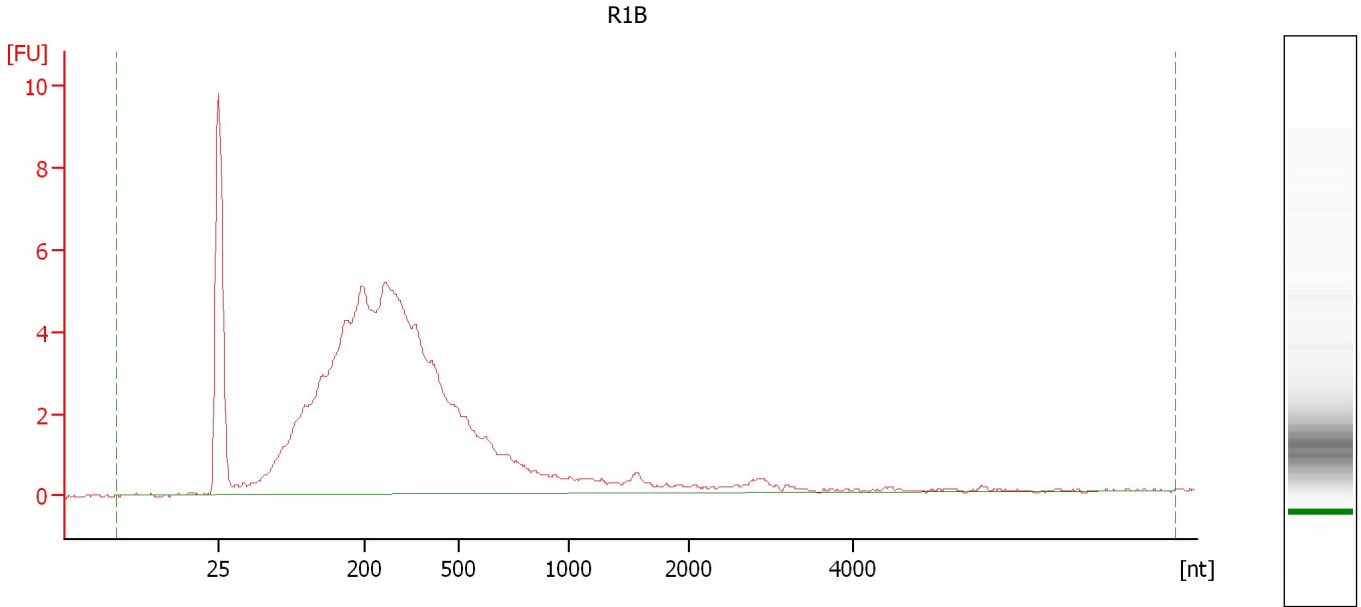
**Fragment table for sample 7 : R1A**

Name	Start Size [nt]	End Size [nt]	Area	% of total Area
16S	650	718	0.9	0.4
23S	864	957	0.8	0.3

Assay Class: Prokaryote Total RNA Nano  
Data Path: C:\... bioanalyzer\2100 expert\data\2016-08-02\2016-08-02\_002.xad

Created: 8/2/2016 5:43:59 PM  
Modified: 8/2/2016 6:07:47 PM

**Electropherogram Summary Continued ...**



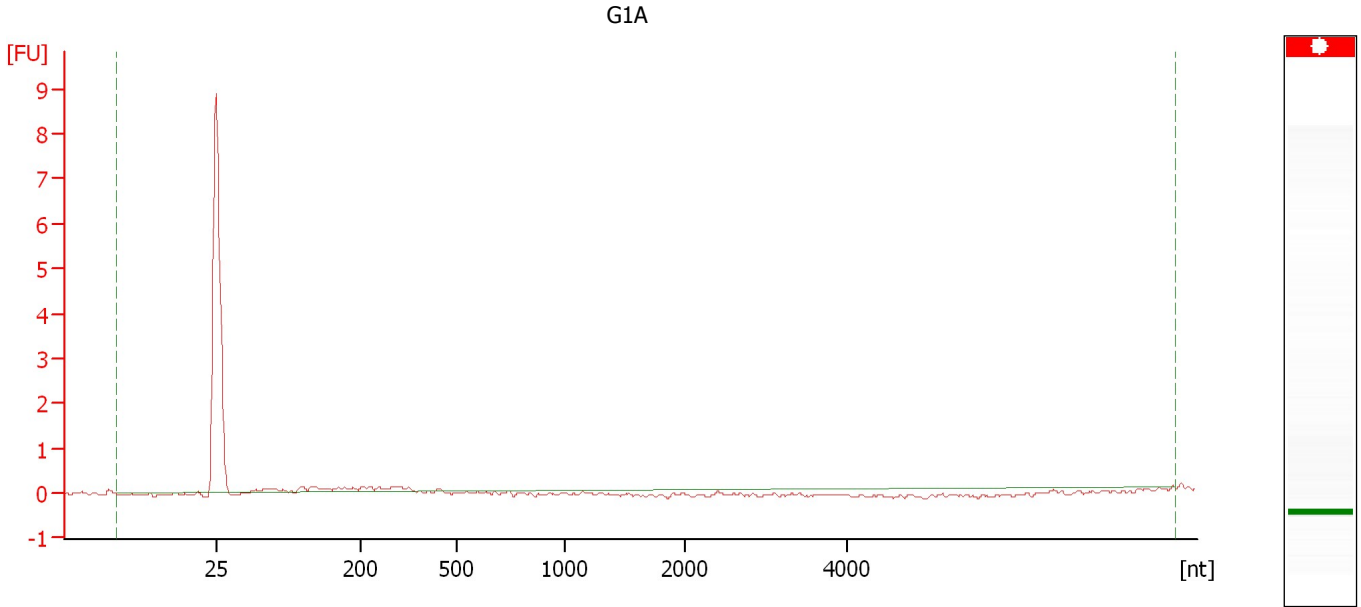
**Overall Results for sample 8 : R1B**

RNA Area:	112.6	rRNA Ratio [23s / 16s]:	0.0
RNA Concentration:	79 ng/μl	RNA Integrity Number (RIN):	2.3 (B.02.08)

Assay Class: Prokaryote Total RNA Nano  
Data Path: C:\... bioanalyzer\2100 expert\data\2016-08-02\2016-08-02\_002.xad

Created: 8/2/2016 5:43:59 PM  
Modified: 8/2/2016 6:07:47 PM

**Electropherogram Summary Continued ...**



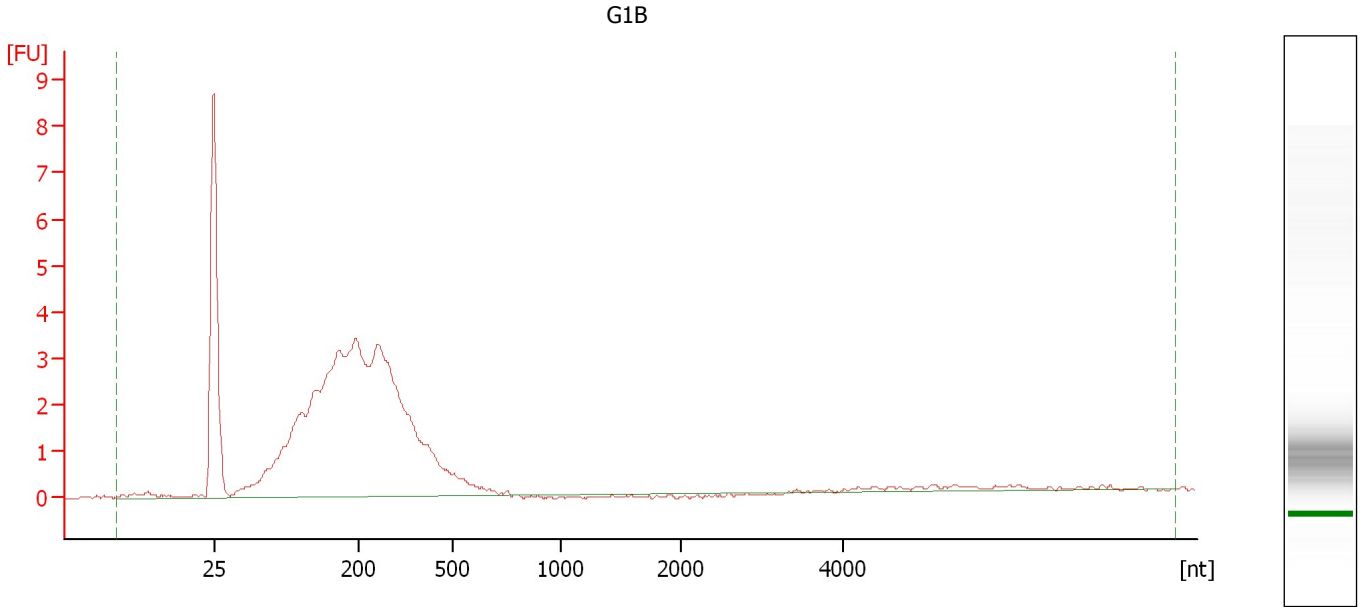
**Overall Results for sample 9 : G1A**

RNA Area:	1.8	rRNA Ratio [23s / 16s]:	0.0
RNA Concentration:	1 ng/μl	RNA Integrity Number (RIN):	N/A (B.02.08)

Assay Class: Prokaryote Total RNA Nano  
Data Path: C:\... bioanalyzer\2100 expert\data\2016-08-02\2016-08-02\_002.xad

Created: 8/2/2016 5:43:59 PM  
Modified: 8/2/2016 6:07:47 PM

**Electropherogram Summary Continued ...**



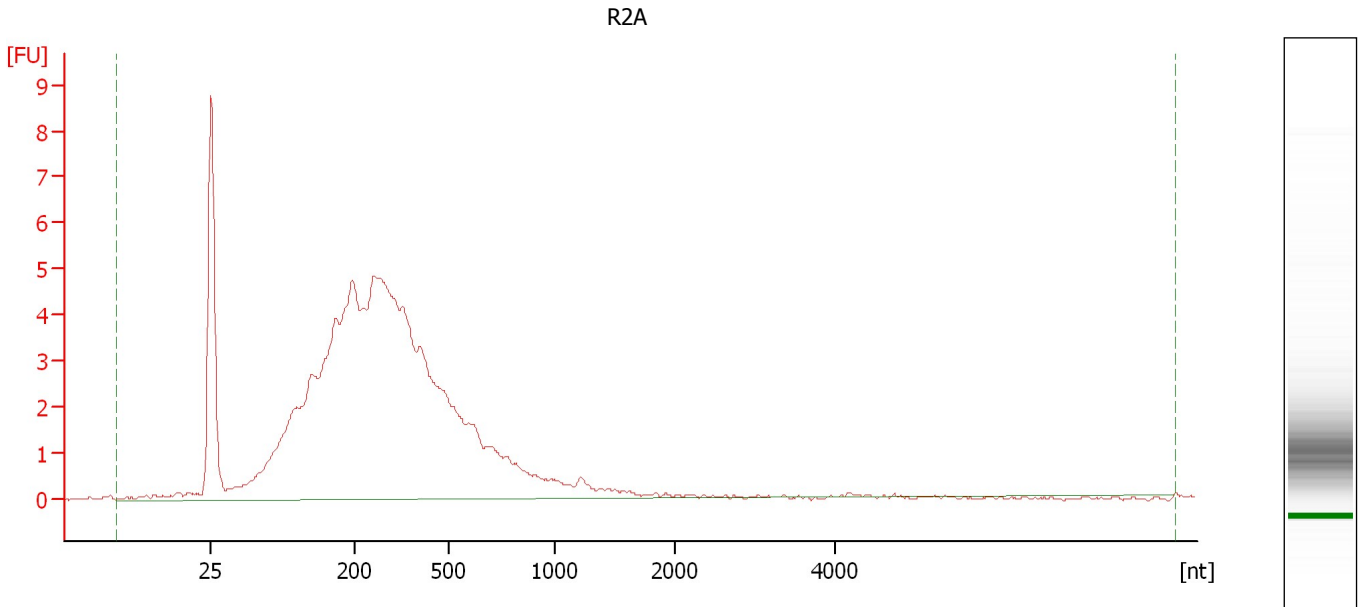
**Overall Results for sample 10 : G1B**

RNA Area:	61.4	rRNA Ratio [23s / 16s]:	0.0
RNA Concentration:	43 ng/μl	RNA Integrity Number (RIN):	2.4 (B.02.08)

Assay Class: Prokaryote Total RNA Nano  
Data Path: C:\... bioanalyzer\2100 expert\data\2016-08-02\2016-08-02\_002.xad

Created: 8/2/2016 5:43:59 PM  
Modified: 8/2/2016 6:07:47 PM

**Electropherogram Summary Continued ...**



**Overall Results for sample 11 : R2A**

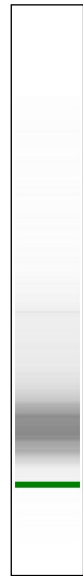
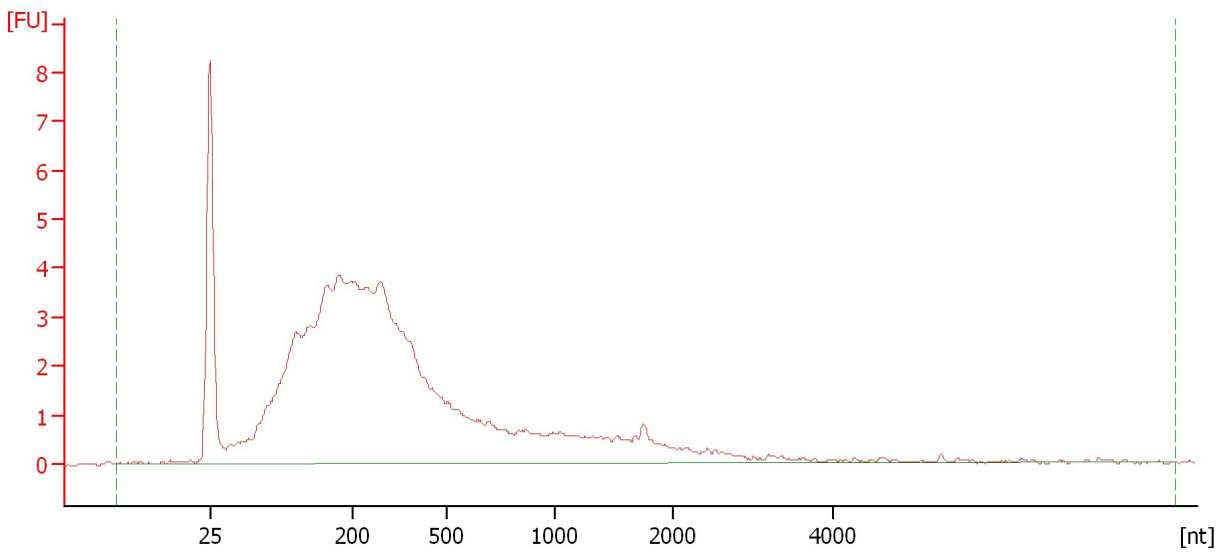
RNA Area:	107.9	rRNA Ratio [23s / 16s]:	0.0
RNA Concentration:	76 ng/μl	RNA Integrity Number (RIN):	2.3 (B.02.08)

Assay Class: Prokaryote Total RNA Nano  
Data Path: C:\... bioanalyzer\2100 expert\data\2016-08-02\2016-08-02\_002.xad

Created: 8/2/2016 5:43:59 PM  
Modified: 8/2/2016 6:07:47 PM

**Electropherogram Summary Continued ...**

5



**Overall Results for sample 12 : 5**

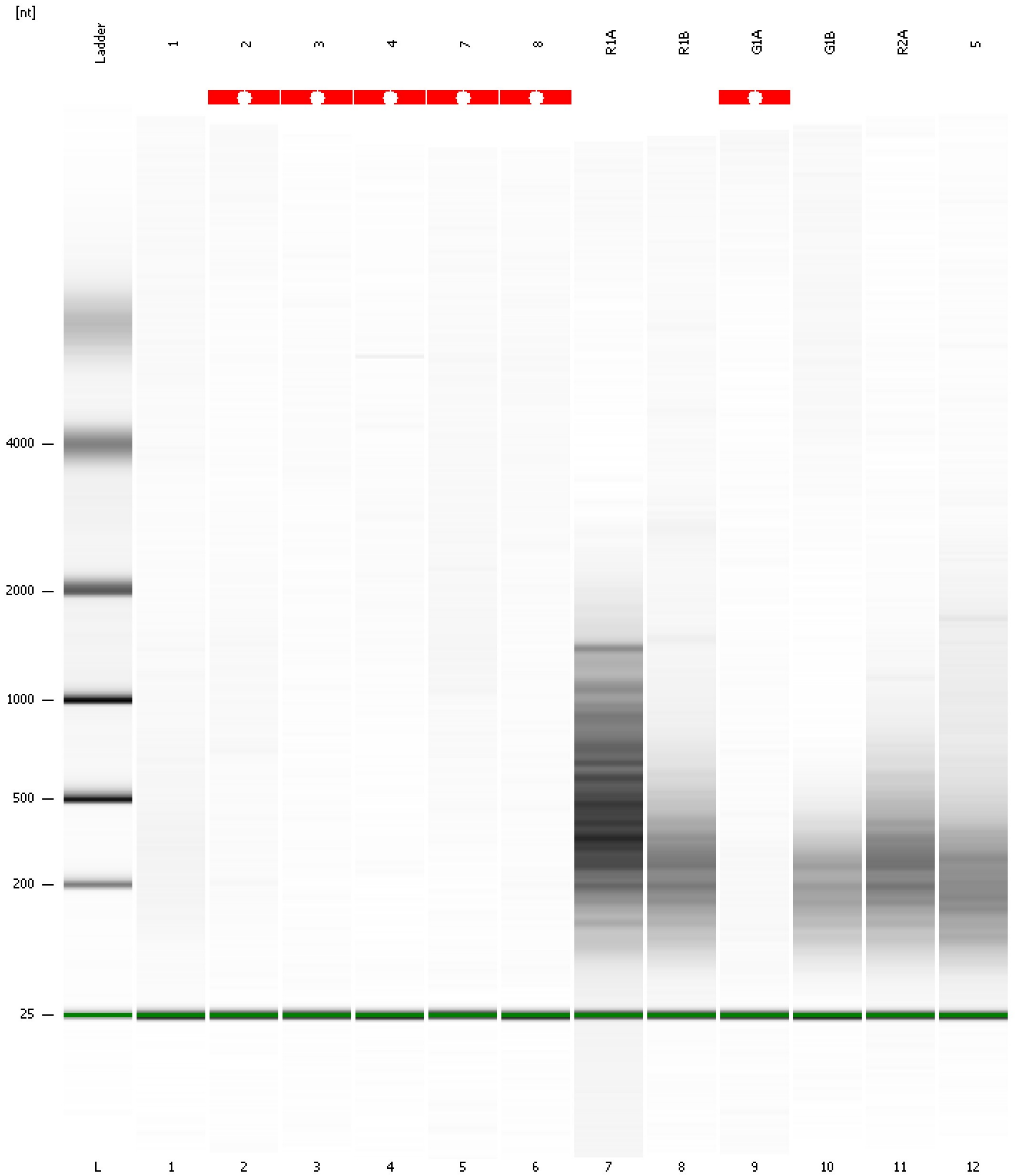
RNA Area:	99.4	rRNA Ratio [23s / 16s]:	0.0
RNA Concentration:	70 ng/μl	RNA Integrity Number (RIN):	2.4 (B.02.08)



Assay Class: Prokaryote Total RNA Nano  
Data Path: C:\... bioanalyzer\2100 expert\data\2016-08-02\2016-08-02\_002.xad

Created: 8/2/2016 5:43:59 PM  
Modified: 8/2/2016 6:07:47 PM

**Gel Image**



Assay Class: Prokaryote Total RNA Nano  
 Data Path: C:\... bioanalyzer\2100 expert\data\2016-08-02\2016-08-02\_002.xad  
 Created: 8/2/2016 5:43:59 PM  
 Modified: 8/2/2016 6:07:47 PM

**Run Logbook**

Description	Number	Source	Category	Sub Category	Time	Time Zone	User	Host
Run ended on port 1 (Number of wells acquired: 13)		Instrument	Run		8/2/2016 6:07:46 PM	(GMT --07:00) Pacific Standard Time	UC Davis	D8XSMGH1
Run started on port 1 (File: C:\Program Files\Agilent\2100 bioanalyzer\2100 expert\data\2016-08-02\2016-08-02_002.xad)		Instrument	Run		8/2/2016 5:44:05 PM	(GMT --07:00) Pacific Standard Time	UC Davis	D8XSMGH1
Product Number : G2938B		Instrument	Run		8/2/2016 5:44:05 PM	(GMT --07:00) Pacific Standard Time	UC Davis	D8XSMGH1
Name :		Instrument	Run		8/2/2016 5:44:05 PM	(GMT --07:00) Pacific Standard Time	UC Davis	D8XSMGH1
Vendor : Agilent Technologies		Instrument	Run		8/2/2016 5:44:05 PM	(GMT --07:00) Pacific Standard Time	UC Davis	D8XSMGH1
Serial# : DE13701086		Instrument	Run		8/2/2016 5:44:05 PM	(GMT --07:00) Pacific Standard Time	UC Davis	D8XSMGH1
Firmware : C.01.069		Instrument	Run		8/2/2016 5:44:05 PM	(GMT --07:00) Pacific Standard Time	UC Davis	D8XSMGH1
Cartridge : Electrode		Instrument	Run		8/2/2016 5:44:05 PM	(GMT --07:00) Pacific Standard Time	UC Davis	D8XSMGH1