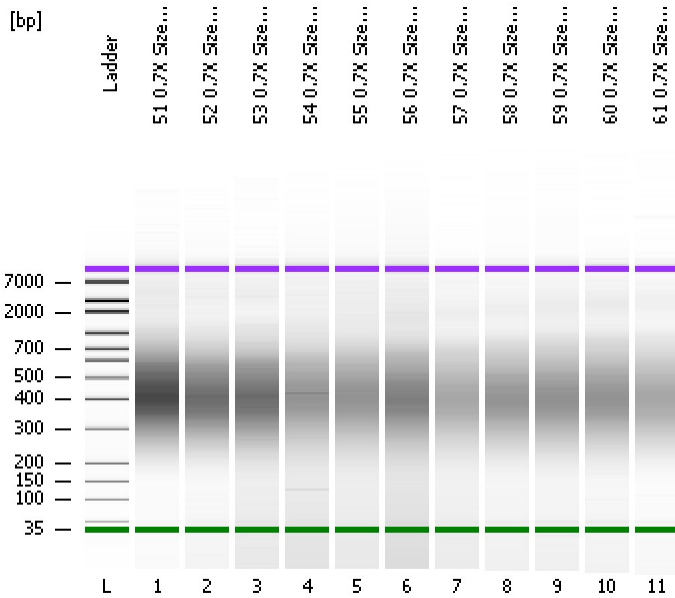


Assay Class: High Sensitivity DNA Assay
Data Path: C:\... bioanalyzer\2100 expert\data\2016-08-31\2016-08-31_003.xad

Created: 8/31/2016 3:10:11 PM
Modified: 8/31/2016 3:50:42 PM

Electrophoresis File Run Summary



Instrument Information:

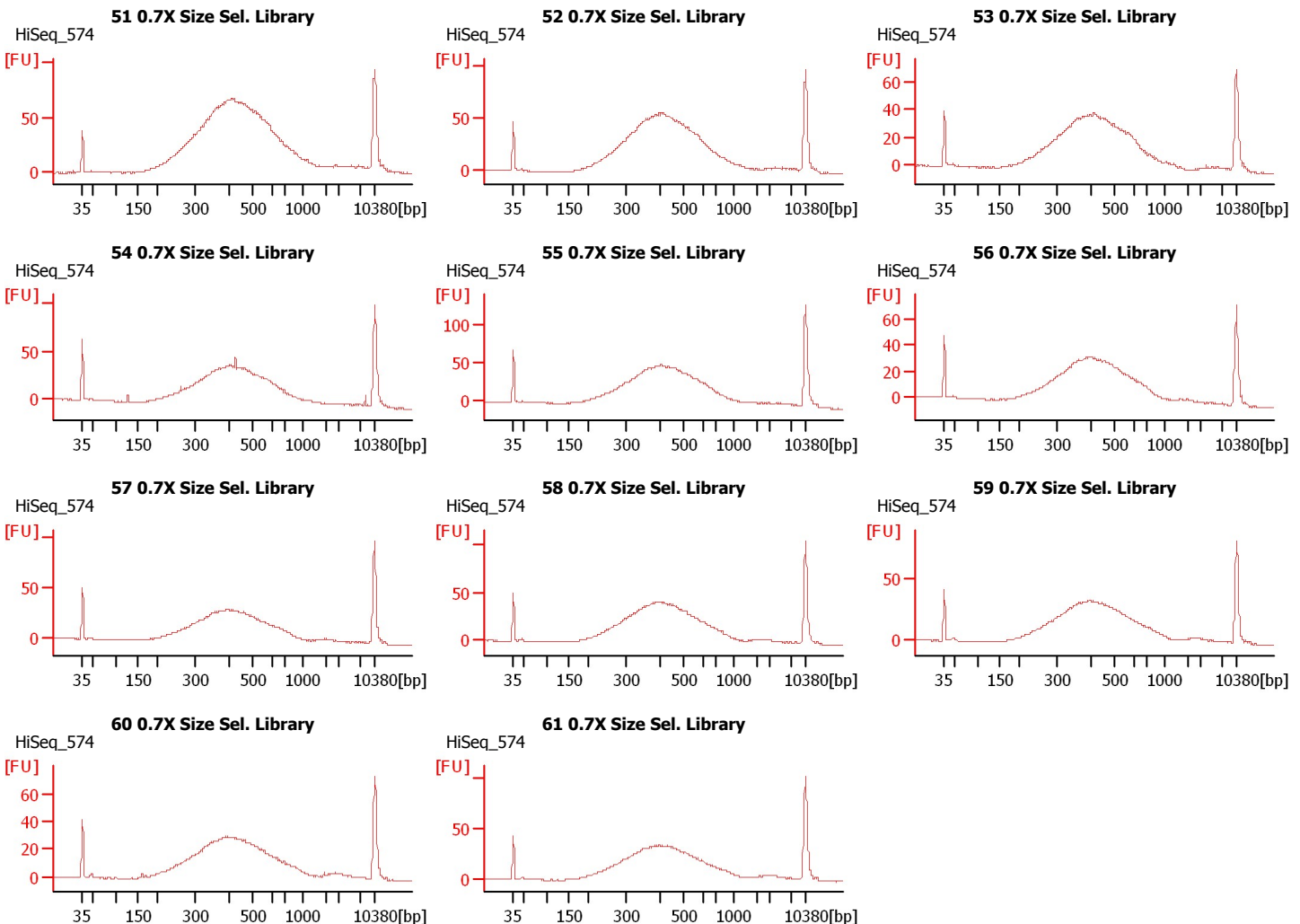
Instrument Name: DE13701086 Firmware: C.01.069
Serial#: DE13701086 Type: G2938B

Assay Information:

Assay Origin Path: C:\Program Files\Agilent\2100 bioanalyzer\2100 expert\assays\dsDNA\High Sensitivity DNA.xsy
Assay Class: High Sensitivity DNA Assay
Version: 1.03
Assay Comments: Copyright © 2003-2010 Agilent Technologies

Chip Information:

Chip Lot #:
Reagent Kit Lot #:
Chip Comments:



Assay Class: High Sensitivity DNA Assay
Data Path: C:\... bioanalyzer\2100 expert\data\2016-08-31\2016-08-31_003.xad

Created: 8/31/2016 3:10:11 PM
Modified: 8/31/2016 3:50:42 PM

Electrophoresis File Run Summary (Chip Summary)

Sample Name	Sample Comment	Rest. Digest	Status	Observation	Result Label	Result Color
51 0.7X Size Sel. Library	HiSeq_574	<input type="checkbox"/>	✓			
52 0.7X Size Sel. Library	HiSeq_574	<input type="checkbox"/>	✓			
53 0.7X Size Sel. Library	HiSeq_574	<input type="checkbox"/>	✓			
54 0.7X Size Sel. Library	HiSeq_574	<input type="checkbox"/>	✓			
55 0.7X Size Sel. Library	HiSeq_574	<input type="checkbox"/>	✓			
56 0.7X Size Sel. Library	HiSeq_574	<input type="checkbox"/>	✓			
57 0.7X Size Sel. Library	HiSeq_574	<input type="checkbox"/>	✓			
58 0.7X Size Sel. Library	HiSeq_574	<input type="checkbox"/>	✓			
59 0.7X Size Sel. Library	HiSeq_574	<input type="checkbox"/>	✓			
60 0.7X Size Sel. Library	HiSeq_574	<input type="checkbox"/>	✓			
61 0.7X Size Sel. Library	HiSeq_574	<input type="checkbox"/>	✓			
Ladder		<input type="checkbox"/>	✓			

Chip Lot #

Reagent Kit Lot #

Chip Comments :

Assay Class: High Sensitivity DNA Assay
Data Path: C:\... bioanalyzer\2100 expert\data\2016-08-31\2016-08-31_003.xad

Created: 8/31/2016 3:10:11 PM
Modified: 8/31/2016 3:50:42 PM

Electrophoresis Assay Details

General Analysis Settings

Number of Available Sample and Ladder Wells (Max.) : 12
Minimum Visible Range [s] : 32
Maximum Visible Range [s] : 138
Start Analysis Time Range [s] : 33
End Analysis Time Range [s] : 137.5
Ladder Concentration [pg/μl] : 1950
Uses Standard Area for Ladder Fragments
Lower Marker Concentration [pg/μl] : 125
Upper Marker Concentration [pg/μl] : 75
Used Upper Marker for Quantitation
Standard Curve Fit is Point to Point
Show Data Aligned to Lower and Upper Marker

Integrator Settings

Integration Start Time [s] : 33.05
Integration End Time [s] : 137
Slope Threshold : 0.8
Height Threshold [FU] : 5
Area Threshold : 0.1
Width Threshold [s] : 0.6
Baseline Plateau [s] : 0.5

Filter Settings

Filter Width [s] : 0.5
Polynomial Order : 4

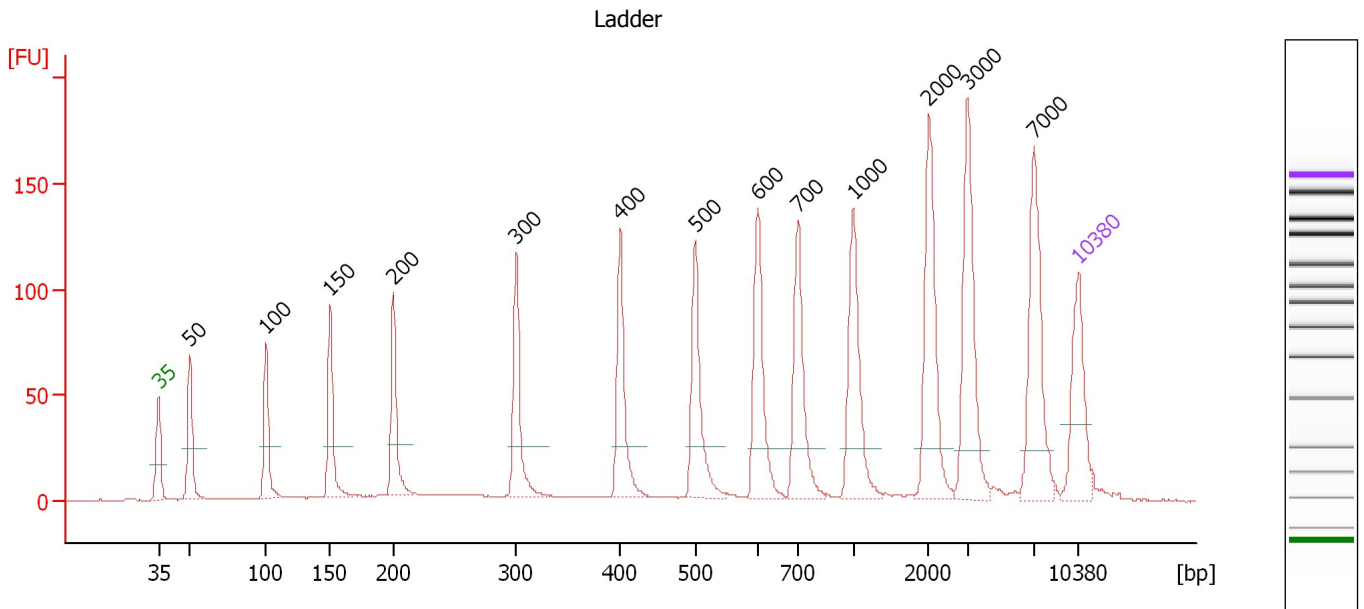
Ladder

Ladder Peak	Size	Area
1	35	160
2	50	210
3	100	208
4	150	221
5	200	242
6	300	270
7	400	305
8	500	306
9	600	336
10	700	321
11	1000	366
12	2000	413
13	3000	411
14	7000	400
15	10380	214

Assay Class: High Sensitivity DNA Assay
 Data Path: C:\... bioanalyzer\2100 expert\data\2016-08-31\2016-08-31_003.xad

Created: 8/31/2016 3:10:11 PM
 Modified: 8/31/2016 3:50:42 PM

Electropherogram Summary



Overall Results for Ladder

Noise: 0.2

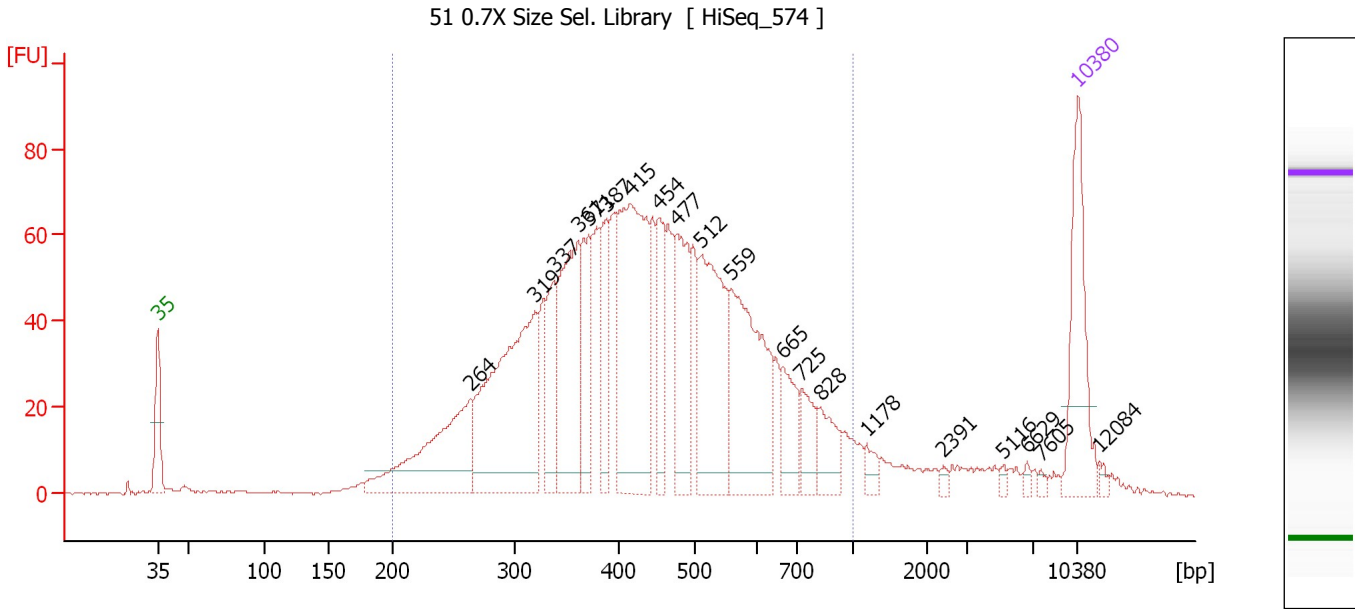
Peak table for Ladder

Peak	Size [bp]	Conc. [pg/μl]	Molarity [pmol/l]	Observations	Aligned Migration Time [s]
1	35	125.00	5,411.3	Lower Marker	43.00
2	50	150.00	4,545.5	Ladder Peak	45.41
3	100	150.00	2,272.7	Ladder Peak	51.20
4	150	150.00	1,515.2	Ladder Peak	56.07
5	200	150.00	1,136.4	Ladder Peak	60.90
6	300	150.00	757.6	Ladder Peak	70.21
7	400	150.00	568.2	Ladder Peak	78.12
8	500	150.00	454.5	Ladder Peak	83.81
9	600	150.00	378.8	Ladder Peak	88.59
10	700	150.00	324.7	Ladder Peak	91.63
11	1,000	150.00	227.3	Ladder Peak	95.87
12	2,000	150.00	113.6	Ladder Peak	101.61
13	3,000	150.00	75.8	Ladder Peak	104.61
14	7,000	150.00	32.5	Ladder Peak	109.62
15	10,380	75.00	10.9	Upper Marker	113.00

Assay Class: High Sensitivity DNA Assay
 Data Path: C:\... bioanalyzer\2100 expert\data\2016-08-31\2016-08-31_003.xad

Created: 8/31/2016 3:10:11 PM
 Modified: 8/31/2016 3:50:42 PM

Electropherogram Summary Continued ...



Overall Results for sample 1 : 51 0.7X Size Sel. Library

Number of peaks found: 20 Corr. Area 1: 1,773.1
 Noise: 0.3

Peak table for sample 1 : 51 0.7X Size Sel. Library

Peak	Size [bp]	Conc. [pg/μl]	Molarity [pmol/l]	Observations	Aligned Migration Time [s]
1	35	125.00	5,411.3	Lower Marker	43.00
2	264	160.79	923.6		66.84
3	319	262.70	1,248.3		71.70
4	337	59.05	265.2		73.16
5	361	147.58	620.0		75.01
6	371	72.15	295.0		75.79
7	387	56.62	221.6		77.10
8	415	226.09	824.7		79.00
9	454	57.14	190.8		81.19
10	477	93.33	296.5		82.50
11	512	152.49	451.1		84.40
12	559	155.68	421.9		86.63
13	665	41.00	93.4		90.57
14	725	28.87	60.3		91.99
15	828	32.97	60.3		93.44
16	1,178	10.46	13.4		96.90
17	2,391	3.41	2.2		102.78
18	5,116	3.65	1.1		107.26
19	6,629	3.39	0.8		109.16
20	7,605	2.53	0.5		110.23
21	10,380	75.00	10.9	Upper Marker	113.00
22	12,084	0.00	0.0		114.70

Assay Class: High Sensitivity DNA Assay
Data Path: C:\... bioanalyzer\2100 expert\data\2016-08-31\2016-08-31_003.xad

Created: 8/31/2016 3:10:11 PM
Modified: 8/31/2016 3:50:42 PM

Electropherogram Summary Continued ...

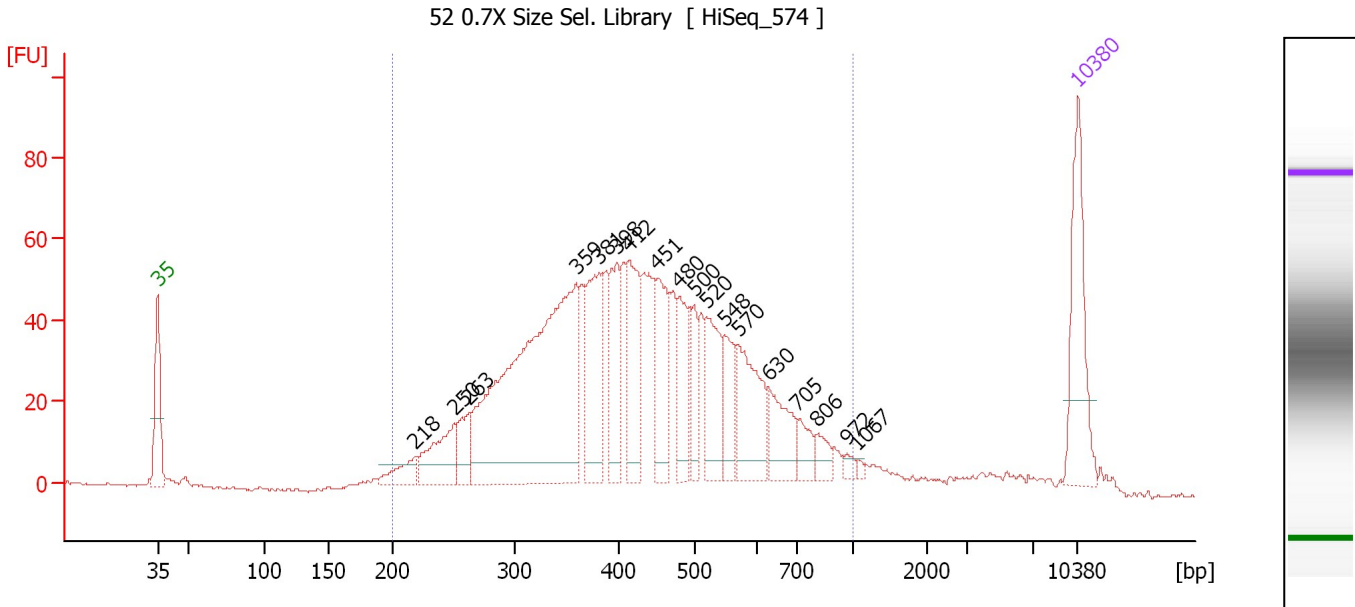
... Region table for sample 1 : 51 0.7X Size Sel. Library

From [bp]	To [bp]	Average Size [bp]	Corr. Area	Molarity [pmol/l]	Co Conc. lor [pg/ μ l]	% of Total	Size distribution in CV [%]
200	1,000	450	1,773.1	7,447.3	1,922.32	91	32.6

Assay Class: High Sensitivity DNA Assay
 Data Path: C:\... bioanalyzer\2100 expert\data\2016-08-31\2016-08-31_003.xad

Created: 8/31/2016 3:10:11 PM
 Modified: 8/31/2016 3:50:42 PM

Electropherogram Summary Continued ...



Overall Results for sample 2 : 52 0.7X Size Sel. Library

Number of peaks found: 18 Corr. Area 1: 1,441.6
 Noise: 0.3

Peak table for sample 2 : 52 0.7X Size Sel. Library

Peak	Size [bp]	Conc. [pg/μl]	Molarity [pmol/l]	Observations	Aligned Migration Time [s]
1	35	125.00	5,411.3	Lower Marker	43.00
2	218	28.36	197.6		62.53
3	250	65.34	395.8		65.57
4	263	32.48	187.3		66.74
5	359	438.21	1,850.1		74.87
6	381	97.39	387.8		76.58
7	398	64.30	244.9		77.95
8	412	82.31	303.0		78.78
9	451	73.34	246.3		81.03
10	480	53.26	168.0		82.70
11	500	36.12	109.4		83.83
12	520	63.56	185.3		84.76
13	548	38.36	106.0		86.13
14	570	80.98	215.3		87.15
15	630	46.56	112.0		89.50
16	705	20.29	43.6		91.71
17	806	15.56	29.3		93.13
18	972	5.58	8.7		95.48
19	1,067	2.73	3.9		96.26
20	10,380	75.00	10.9	Upper Marker	113.00

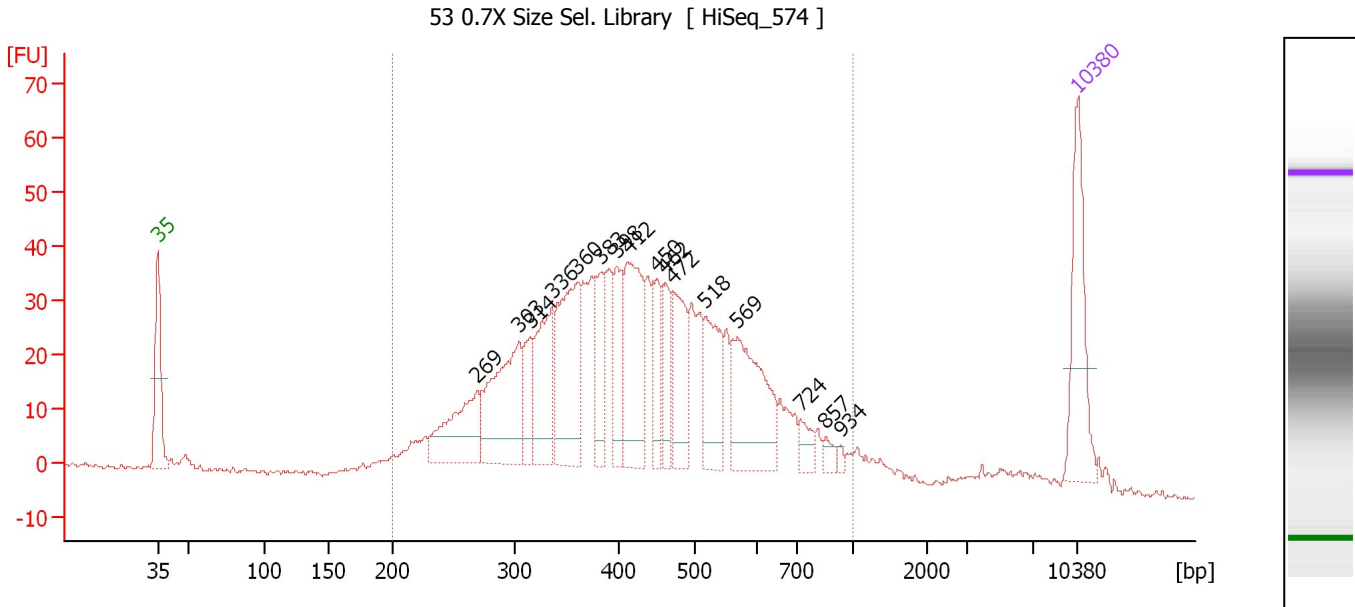
Region table for sample 2 : 52 0.7X Size Sel. Library

From [bp]	To [bp]	Average Size [bp]	Corr. Area	Molarity [pmol/l]	Co Conc. [pg/μl]	% of Total	Size distribution in CV [%]
200	1,000	440	1,441.6	6,523.1	1,661.81	93	31.9

Assay Class: High Sensitivity DNA Assay
 Data Path: C:\... bioanalyzer\2100 expert\data\2016-08-31\2016-08-31_003.xad

Created: 8/31/2016 3:10:11 PM
 Modified: 8/31/2016 3:50:42 PM

Electropherogram Summary Continued ...



Overall Results for sample 3 : 53 0.7X Size Sel. Library

Number of peaks found: 16 Corr. Area 1: 1,011.7
 Noise: 0.3

Peak table for sample 3 : 53 0.7X Size Sel. Library

Peak	Size [bp]	Conc. [pg/μl]	Molarity [pmol/l]	Observations	Aligned Migration Time [s]
1	35	125.00	5,411.3	Lower Marker	43.00
2	269	92.52	521.4		67.31
3	303	142.44	711.1		70.48
4	314	35.97	173.5		71.33
5	336	93.41	421.1		73.06
6	360	133.91	563.7		74.95
7	383	54.84	216.9		76.78
8	398	54.45	207.2		77.98
9	412	115.56	424.7		78.82
10	450	45.94	154.8		80.95
11	462	41.40	135.8		81.65
12	472	70.27	225.4		82.24
13	518	71.77	209.9		84.67
14	569	114.98	306.2		87.10
15	724	15.62	32.7		91.97
16	857	9.00	15.9		93.85
17	934	4.00	6.5		94.94
18	10,380	75.00	10.9	Upper Marker	113.00

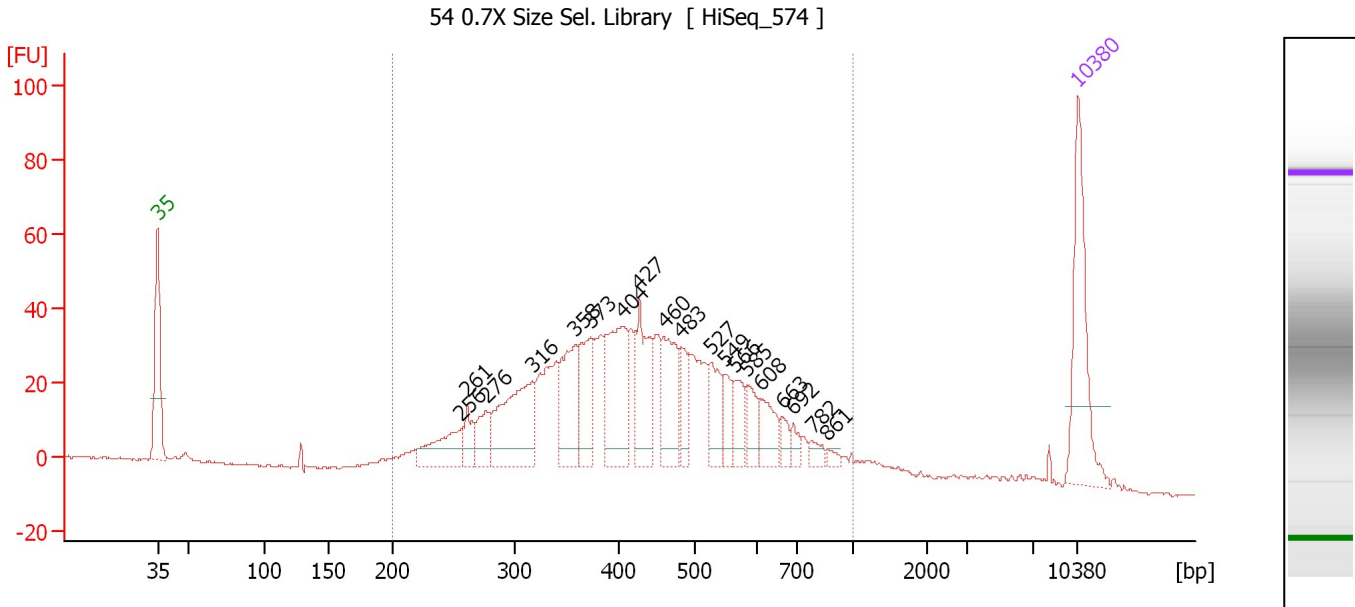
Region table for sample 3 : 53 0.7X Size Sel. Library

From [bp]	To [bp]	Average Size [bp]	Corr. Area	Molarity [pmol/l]	Co Conc. [pg/μl]	% of Total	Size distribution in CV [%]
200	1,000	438	1,011.7	6,342.7	1,610.27	95	31.5

Assay Class: High Sensitivity DNA Assay
 Data Path: C:\... bioanalyzer\2100 expert\data\2016-08-31\2016-08-31_003.xad

Created: 8/31/2016 3:10:11 PM
 Modified: 8/31/2016 3:50:42 PM

Electropherogram Summary Continued ...



Overall Results for sample 4 : 54 0.7X Size Sel. Library

Number of peaks found: 19 Corr. Area 1: 1,007.3
 Noise: 0.3

Peak table for sample 4 : 54 0.7X Size Sel. Library

Peak	Size [bp]	Conc. [pg/μl]	Molarity [pmol/l]	Observations	Aligned Migration Time [s]
1	35	125.00	5,411.3	Lower Marker	43.00
2	256	49.69	294.3		66.10
3	261	23.58	137.0		66.55
4	276	28.66	157.3		67.97
5	316	107.50	515.6		71.47
6	358	71.70	303.3		74.81
7	373	58.56	238.0		75.97
8	404	93.44	350.3		78.35
9	427	63.69	225.9		79.67
10	460	61.37	202.1		81.55
11	483	29.25	91.7		82.86
12	527	36.62	105.3		85.09
13	549	19.19	53.0		86.15
14	566	24.43	65.4		86.97
15	585	22.40	58.0		87.88
16	608	27.37	68.2		88.84
17	663	10.49	24.0		90.51
18	692	9.21	20.2		91.37
19	782	8.21	15.9		92.79
20	861	4.61	8.1		93.90
21	10,380	75.00	10.9	Upper Marker	113.00

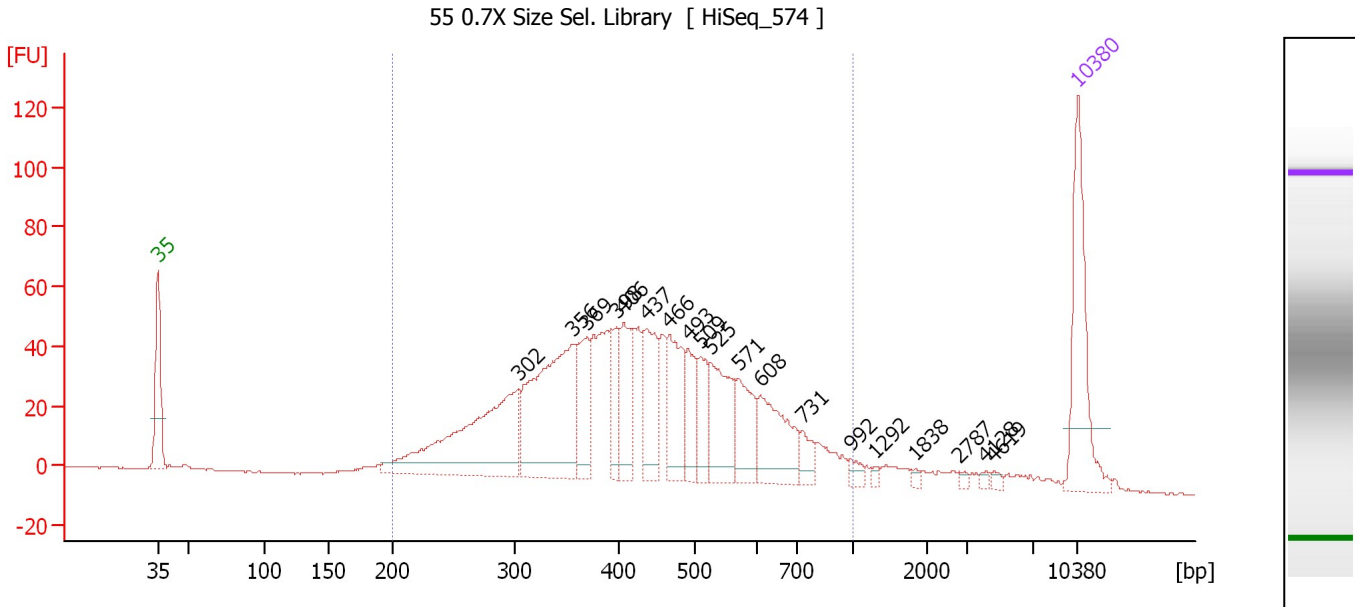
Region table for sample 4 : 54 0.7X Size Sel. Library

From [bp]	To [bp]	Average Size [bp]	Corr. Area	Molarity [pmol/l]	Co Conc. [pg/μl]	% of Total	Size distribution in CV [%]
200	1,000	444	1,007.3	4,369.4	1,124.14	94	31.6

Assay Class: High Sensitivity DNA Assay
 Data Path: C:\... bioanalyzer\2100 expert\data\2016-08-31\2016-08-31_003.xad

Created: 8/31/2016 3:10:11 PM
 Modified: 8/31/2016 3:50:42 PM

Electropherogram Summary Continued ...



Overall Results for sample 5 : 55 0.7X Size Sel. Library

Number of peaks found: 19 Corr. Area 1: 1,331.5
 Noise: 0.3

Peak table for sample 5 : 55 0.7X Size Sel. Library

Peak	Size [bp]	Conc. [pg/μl]	Molarity [pmol/l]	Observations	Aligned Migration Time [s]
1	35	125.00	5,411.3	Lower Marker	43.00
2	302	192.26	963.0		70.40
3	356	178.94	762.3		74.61
4	369	52.49	215.7		75.64
5	398	35.01	133.3		77.95
6	406	56.56	211.1		78.46
7	437	63.71	221.1		80.21
8	466	62.72	203.8		81.90
9	493	38.10	117.2		83.39
10	509	33.61	100.0		84.26
11	525	64.26	185.3		85.03
12	571	45.17	119.9		87.19
13	608	64.23	160.1		88.83
14	731	15.47	32.1		92.06
15	992	6.87	10.5		95.76
16	1,292	2.91	3.4		97.55
17	1,838	2.40	2.0		100.68
18	2,787	2.60	1.4		103.97
19	4,128	2.74	1.0		106.02
20	4,619	3.09	1.0		106.64
21	10,380	75.00	10.9	Upper Marker	113.00

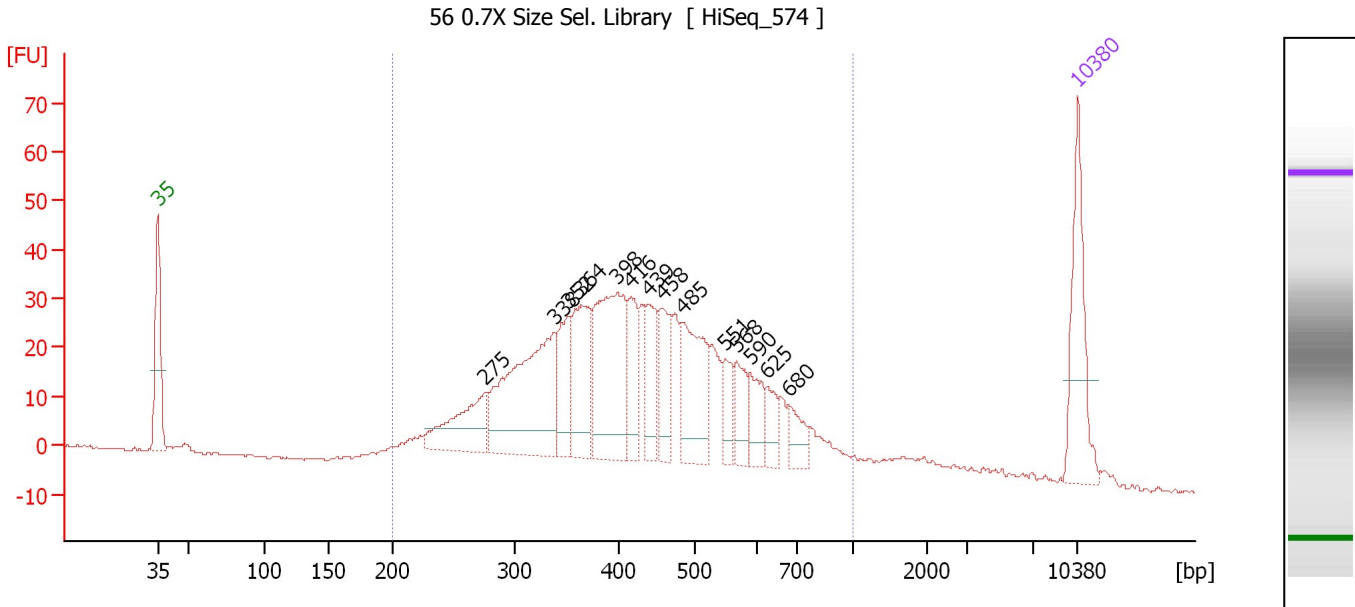
Region table for sample 5 : 55 0.7X Size Sel. Library

From [bp]	To [bp]	Average Size [bp]	Corr. Area	Molarity [pmol/l]	Co Conc. [pg/μl]	% of Total	Size distribution in CV [%]
200	1,000	444	1,331.5	4,302.9	1,101.22	92	32.1

Assay Class: High Sensitivity DNA Assay
 Data Path: C:\... bioanalyzer\2100 expert\data\2016-08-31\2016-08-31_003.xad

Created: 8/31/2016 3:10:11 PM
 Modified: 8/31/2016 3:50:42 PM

Electropherogram Summary Continued ...



Overall Results for sample 6 : 56 0.7X Size Sel. Library

Number of peaks found: 14 Corr. Area 1: 891.9
 Noise: 0.3

Peak table for sample 6 : 56 0.7X Size Sel. Library

Peak	Size [bp]	Conc. [pg/μl]	Molarity [pmol/l]	Observations	Aligned Migration Time [s]
1	35	125.00	5,411.3	Lower Marker	43.00
2	275	87.00	479.1		67.89
3	338	209.44	939.6		73.19
4	352	59.85	257.5		74.34
5	364	96.76	402.8		75.27
6	398	161.39	614.2		77.97
7	416	53.63	195.5		79.01
8	439	54.10	186.5		80.36
9	458	52.06	172.3		81.40
10	485	102.20	319.2		82.96
11	551	28.44	78.3		86.24
12	568	34.44	91.8		87.07
13	590	33.63	86.4		88.11
14	625	24.43	59.2		89.35
15	680	25.61	57.1		91.02
16	10,380	75.00	10.9	Upper Marker	113.00

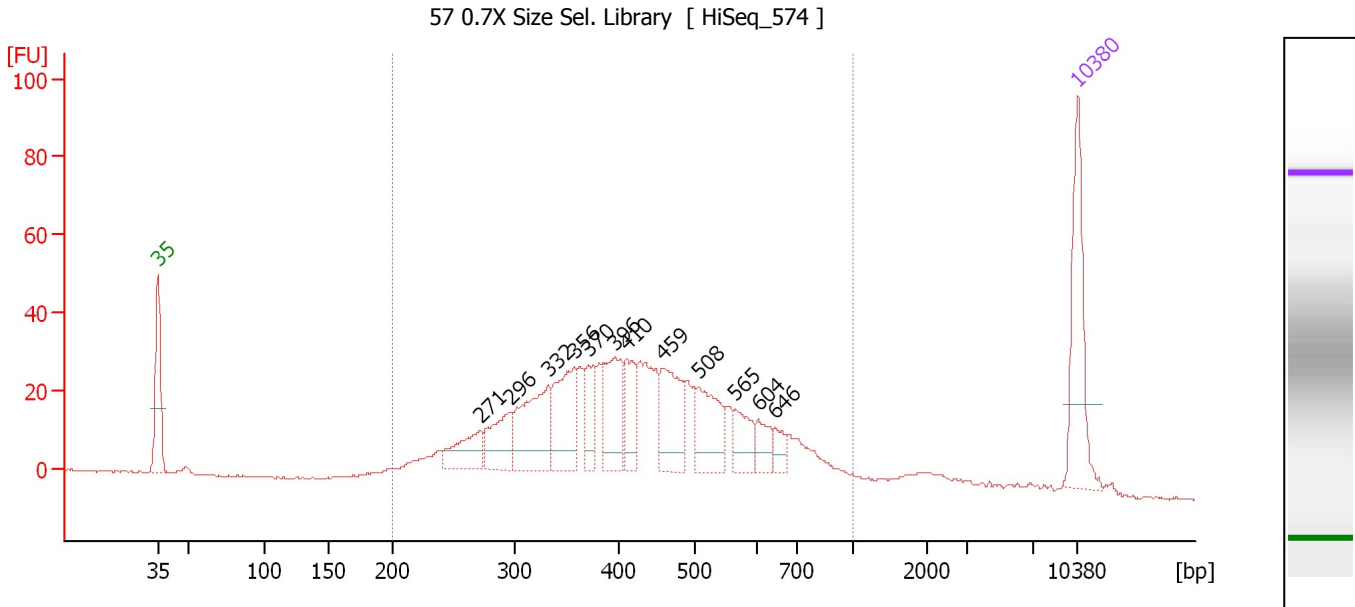
Region table for sample 6 : 56 0.7X Size Sel. Library

From [bp]	To [bp]	Average Size [bp]	Corr. Area	Molarity [pmol/l]	Co Conc. lor [pg/μl]	% of Total	Size distribution in CV [%]
200	1,000	440	891.9	5,343.5	1,363.81	92	31.4

Assay Class: High Sensitivity DNA Assay
 Data Path: C:\... bioanalyzer\2100 expert\data\2016-08-31\2016-08-31_003.xad

Created: 8/31/2016 3:10:11 PM
 Modified: 8/31/2016 3:50:42 PM

Electropherogram Summary Continued ...



Overall Results for sample 7 : 57 0.7X Size Sel. Library

Number of peaks found: 12 Corr. Area 1: 774.7
 Noise: 0.1

Peak table for sample 7 : 57 0.7X Size Sel. Library

Peak	Size [bp]	Conc. [pg/μl]	Molarity [pmol/l]	Observations	Aligned Migration Time [s]
1	35	125.00	5,411.3	Lower Marker	43.00
2	271	47.56	265.5		67.55
3	296	53.25	272.3		69.87
4	332	94.69	432.5		72.72
5	356	76.78	326.4		74.67
6	370	33.03	135.3		75.73
7	396	66.33	253.9		77.79
8	410	41.71	154.2		78.69
9	459	73.25	241.8		81.48
10	508	62.54	186.7		84.18
11	565	30.61	82.1		86.92
12	604	21.32	53.5		88.72
13	646	13.66	32.0		89.98
14	10,380	75.00	10.9	Upper Marker	113.00

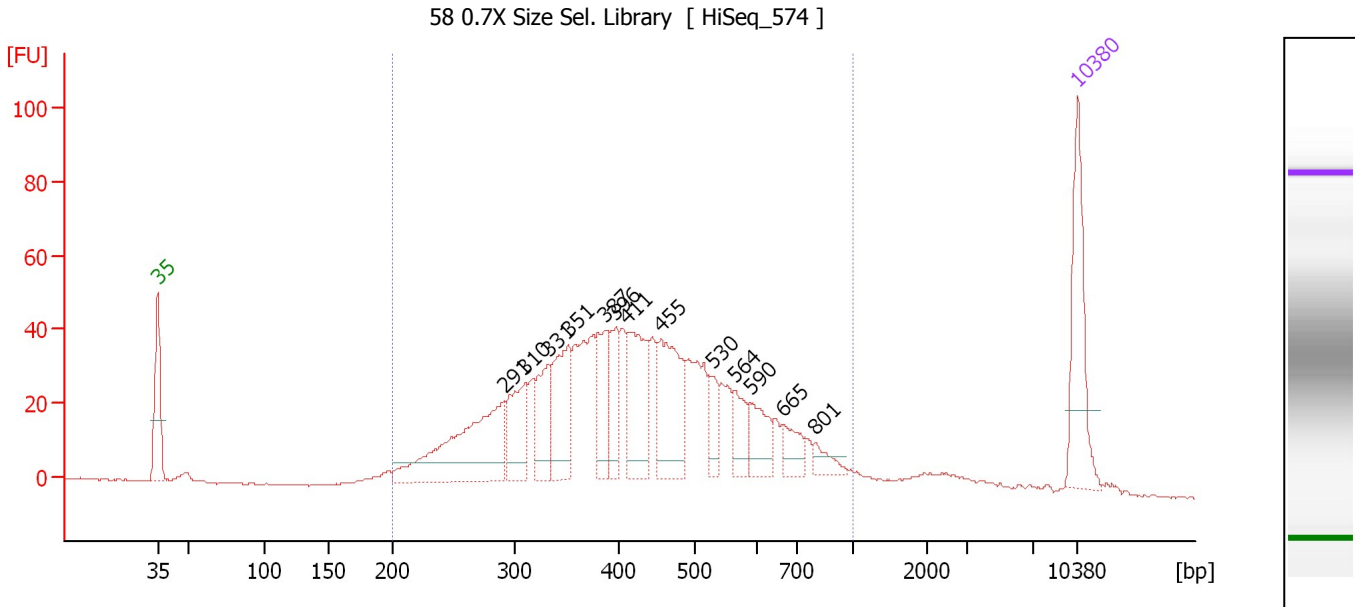
Region table for sample 7 : 57 0.7X Size Sel. Library

From [bp]	To [bp]	Average Size [bp]	Corr. Area	Molarity [pmol/l]	Co Conc. lor [pg/μl]	% of Total	Size distribution in CV [%]
200	1,000	438	774.7	3,901.6	993.82	96	31.2

Assay Class: High Sensitivity DNA Assay
 Data Path: C:\... bioanalyzer\2100 expert\data\2016-08-31\2016-08-31_003.xad

Created: 8/31/2016 3:10:11 PM
 Modified: 8/31/2016 3:50:42 PM

Electropherogram Summary Continued ...



Overall Results for sample 8 : 58 0.7X Size Sel. Library

Number of peaks found: 13 Corr. Area 1: 1,065.7
 Noise: 0.2

Peak table for sample 8 : 58 0.7X Size Sel. Library

Peak	Size [bp]	Conc. [pg/μl]	Molarity [pmol/l]	Observations	Aligned Migration Time [s]
1	35	125.00	5,411.3	Lower Marker	43.00
2	291	181.17	944.5		69.34
3	310	70.83	346.3		70.99
4	331	57.91	264.7		72.70
5	351	87.51	377.8		74.24
6	387	56.83	222.7		77.07
7	396	43.94	168.1		77.81
8	411	88.82	327.1		78.77
9	455	103.49	344.2		81.28
10	530	25.52	73.0		85.22
11	564	32.09	86.2		86.88
12	590	37.79	97.1		88.10
13	665	25.15	57.3		90.56
14	801	14.55	27.5		93.06
15	10,380	75.00	10.9	Upper Marker	113.00

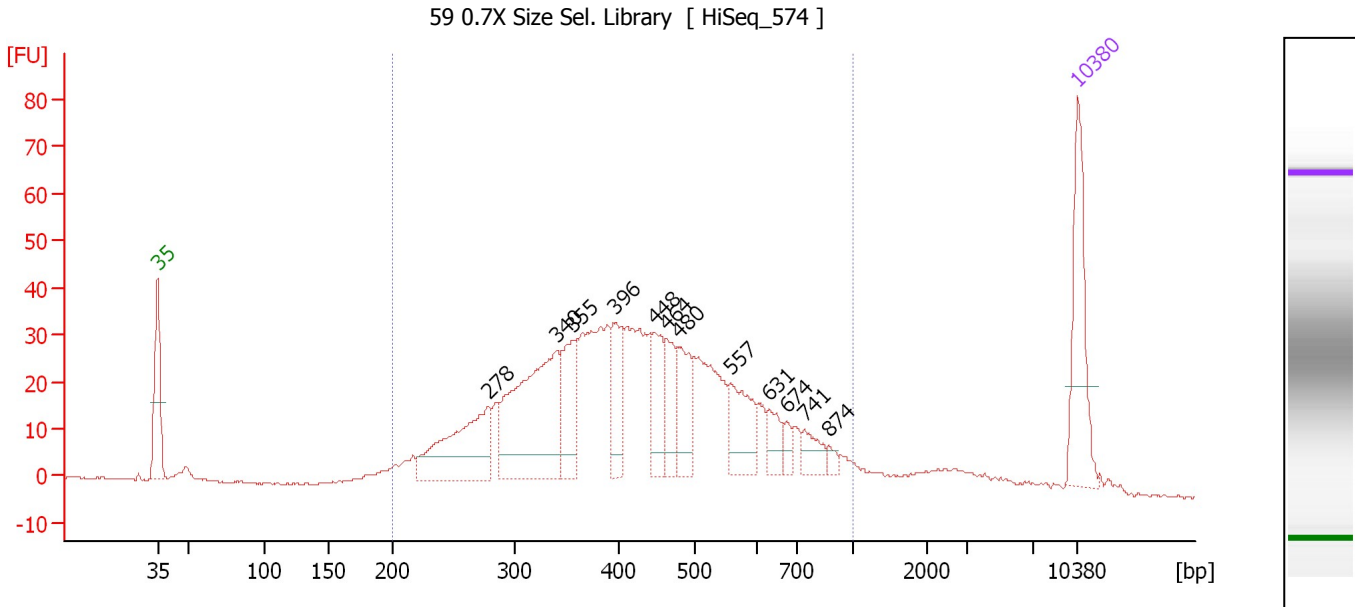
Region table for sample 8 : 58 0.7X Size Sel. Library

From [bp]	To [bp]	Average Size [bp]	Corr. Area	Molarity [pmol/l]	Co Conc. [pg/μl]	% of Total	Size distribution in CV [%]
200	1,000	438	1,065.7	5,029.2	1,274.35	95	32.1

Assay Class: High Sensitivity DNA Assay
 Data Path: C:\... bioanalyzer\2100 expert\data\2016-08-31\2016-08-31_003.xad

Created: 8/31/2016 3:10:11 PM
 Modified: 8/31/2016 3:50:42 PM

Electropherogram Summary Continued ...



Overall Results for sample 9 : 59 0.7X Size Sel. Library

Number of peaks found: 12 Corr. Area 1: 876.9
 Noise: 0.2

Peak table for sample 9 : 59 0.7X Size Sel. Library

Peak	Size [bp]	Conc. [pg/μl]	Molarity [pmol/l]	Observations	Aligned Migration Time [s]
1	35	125.00	5,411.3	Lower Marker	43.00
2	278	134.61	733.5		68.17
3	340	206.89	922.7		73.35
4	355	66.62	284.1		74.58
5	396	47.30	181.1		77.79
6	448	56.01	189.6		80.83
7	464	44.46	145.3		81.74
8	480	52.92	167.2		82.65
9	557	57.29	155.7		86.55
10	631	20.63	49.5		89.54
11	674	10.89	24.5		90.82
12	741	20.52	41.9		92.21
13	874	6.00	10.4		94.08
14	10,380	75.00	10.9	Upper Marker	113.00

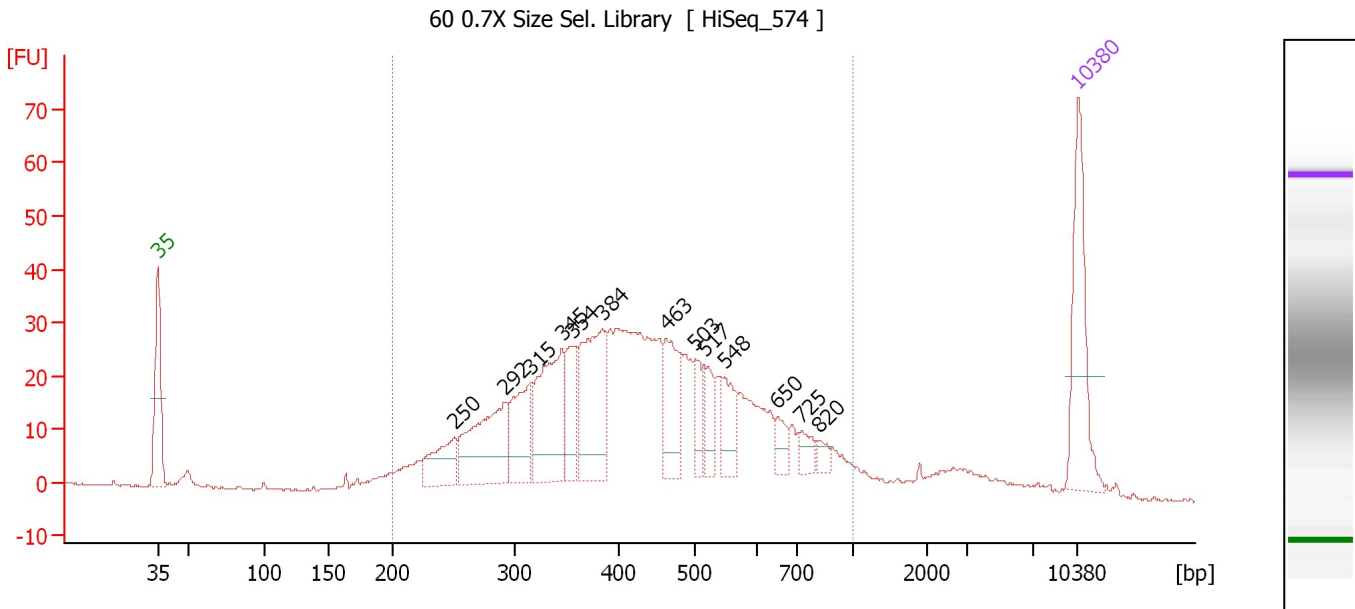
Region table for sample 9 : 59 0.7X Size Sel. Library

From [bp]	To [bp]	Average Size [bp]	Corr. Area	Molarity [pmol/l]	Co Conc. [pg/μl]	% of Total	Size distribution in CV [%]
200	1,000	441	876.9	5,179.1	1,310.86	93	33.0

Assay Class: High Sensitivity DNA Assay
 Data Path: C:\... bioanalyzer\2100 expert\data\2016-08-31\2016-08-31_003.xad

Created: 8/31/2016 3:10:11 PM
 Modified: 8/31/2016 3:50:42 PM

Electropherogram Summary Continued ...



Overall Results for sample 10 : 60 0.7X Size Sel. Library

Number of peaks found: 13 Corr. Area 1: 760.1
 Noise: 0.2

Peak table for sample 10 : 60 0.7X Size Sel. Library

Peak	Size [bp]	Conc. [pg/μl]	Molarity [pmol/l]	Observations	Aligned Migration Time [s]
1	35	125.00	5,411.3	Lower Marker	43.00
2	250	50.76	307.5		65.57
3	292	114.53	595.1		69.42
4	315	70.35	338.2		71.41
5	345	116.32	510.9		73.77
6	354	46.67	199.5		74.52
7	384	116.67	460.9		76.82
8	463	64.60	211.5		81.70
9	503	27.14	81.8		83.95
10	517	28.37	83.1		84.65
11	548	33.15	91.7		86.09
12	650	15.26	35.6		90.11
13	725	15.18	31.7		91.99
14	820	8.46	15.6		93.33
15	10,380	75.00	10.9	Upper Marker	113.00

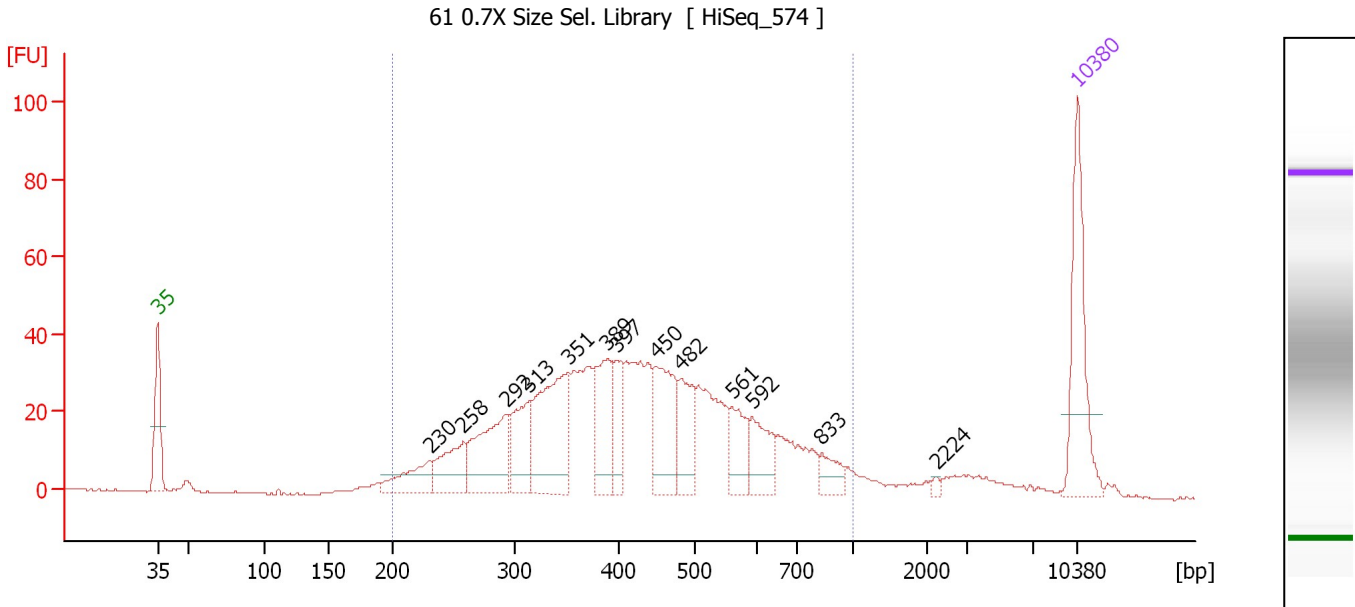
Region table for sample 10 : 60 0.7X Size Sel. Library

From [bp]	To [bp]	Average Size [bp]	Corr. Area	Molarity [pmol/l]	Co Conc. [pg/μl]	% of Total	Size distribution in CV [%]
200	1,000	444	760.1	4,854.7	1,238.38	93	33.1

Assay Class: High Sensitivity DNA Assay
 Data Path: C:\... bioanalyzer\2100 expert\data\2016-08-31\2016-08-31_003.xad

Created: 8/31/2016 3:10:11 PM
 Modified: 8/31/2016 3:50:42 PM

Electropherogram Summary Continued ...



Overall Results for sample 11 : 61 0.7X Size Sel. Library

Number of peaks found: 13 Corr. Area 1: 877.0
 Noise: 0.3

Peak table for sample 11 : 61 0.7X Size Sel. Library

Peak	Size [bp]	Conc. [pg/µl]	Molarity [pmol/l]	Observations	Aligned Migration Time [s]
1	35	125.00	5,411.3	Lower Marker	43.00
2	230	42.76	281.2		63.73
3	258	52.63	309.5		66.26
4	292	91.60	474.8		69.49
5	313	58.03	280.6		71.27
6	351	125.41	541.6		74.23
7	389	62.24	242.4		77.25
8	397	36.13	137.8		77.89
9	450	79.88	269.0		80.96
10	482	50.62	159.1		82.79
11	561	37.61	101.6		86.72
12	592	39.39	100.7		88.23
13	833	18.39	33.5		93.51
14	2,224	2.77	1.9		102.28
15	10,380	75.00	10.9	Upper Marker	113.00

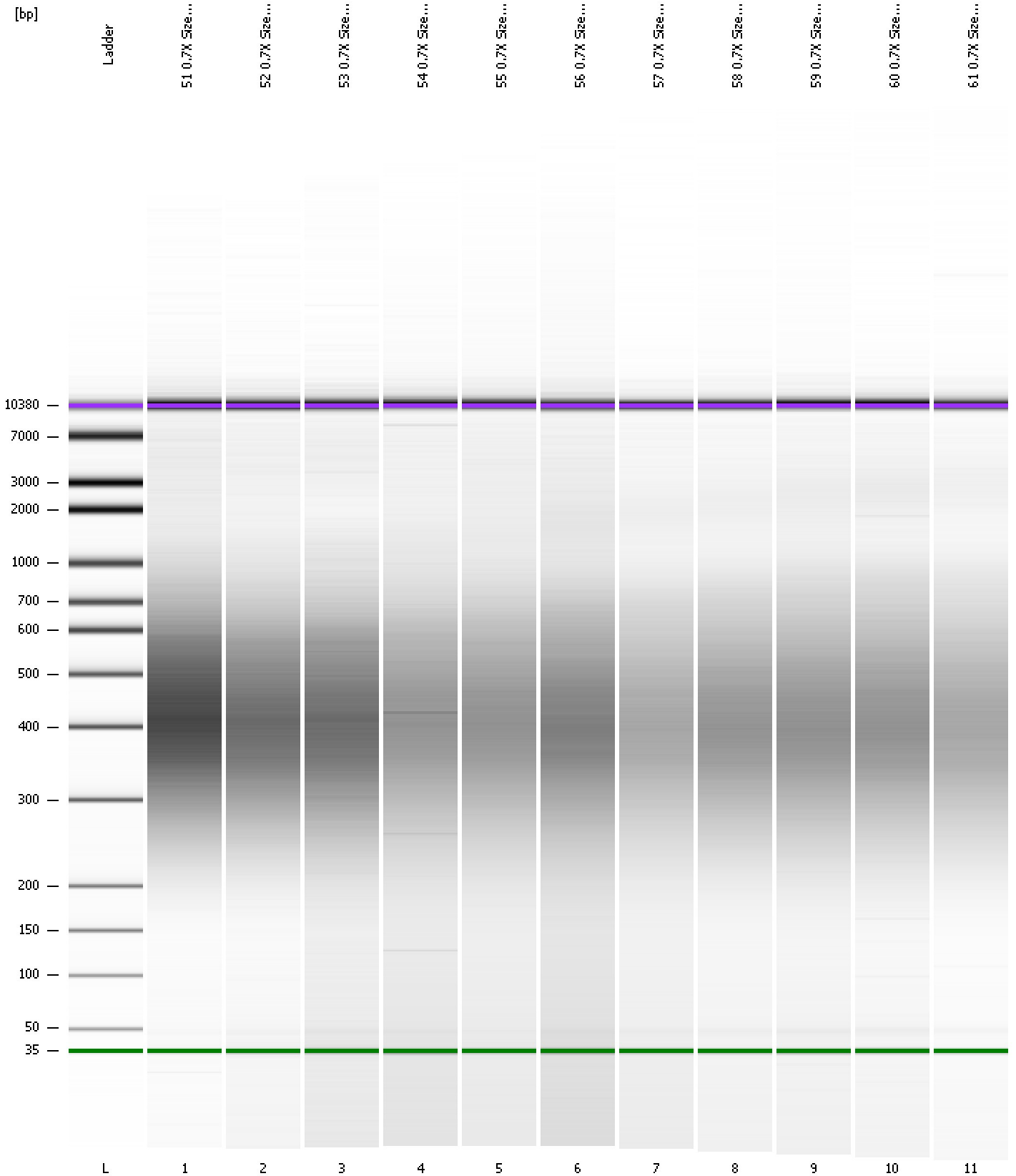
Region table for sample 11 : 61 0.7X Size Sel. Library

From [bp]	To [bp]	Average Size [bp]	Corr. Area	Molarity [pmol/l]	Co Conc. [pg/µl]	% of Total	Size distribution in CV [%]
200	1,000	440	877.0	4,034.8	1,017.97	93	33.2

Assay Class: High Sensitivity DNA Assay
Data Path: C:\... bioanalyzer\2100 expert\data\2016-08-31\2016-08-31_003.xad

Created: 8/31/2016 3:10:11 PM
Modified: 8/31/2016 3:50:42 PM

Gel Image



Assay Class: High Sensitivity DNA Assay
 Data Path: C:\... bioanalyzer\2100 expert\data\2016-08-31\2016-08-31_003.xad

Created: 8/31/2016 3:10:11 PM
 Modified: 8/31/2016 3:50:42 PM

Run Logbook

Description	Number	Source	Category	Sub Category	Time	Time Zone	User	Host
Run ended on port 1 (Number of wells acquired: 12)		Instrument	Run		8/31/2016 3:50:40 PM	(GMT --07:00) Pacific Standard Time	UC Davis	D8XSMGH1
Run started on port 1 (File: C:\Program Files\Agilent\2100 bioanalyzer\2100 expert\data\2016-08-31\2016-08-31_003.xad)		Instrument	Run		8/31/2016 3:10:16 PM	(GMT --07:00) Pacific Standard Time	UC Davis	D8XSMGH1
Product Number : G2938B		Instrument	Run		8/31/2016 3:10:16 PM	(GMT --07:00) Pacific Standard Time	UC Davis	D8XSMGH1
Name :		Instrument	Run		8/31/2016 3:10:16 PM	(GMT --07:00) Pacific Standard Time	UC Davis	D8XSMGH1
Vendor : Agilent Technologies		Instrument	Run		8/31/2016 3:10:16 PM	(GMT --07:00) Pacific Standard Time	UC Davis	D8XSMGH1
Serial# : DE13701086		Instrument	Run		8/31/2016 3:10:16 PM	(GMT --07:00) Pacific Standard Time	UC Davis	D8XSMGH1
Firmware : C.01.069		Instrument	Run		8/31/2016 3:10:16 PM	(GMT --07:00) Pacific Standard Time	UC Davis	D8XSMGH1
Cartridge : Electrode		Instrument	Run		8/31/2016 3:10:16 PM	(GMT --07:00) Pacific Standard Time	UC Davis	D8XSMGH1