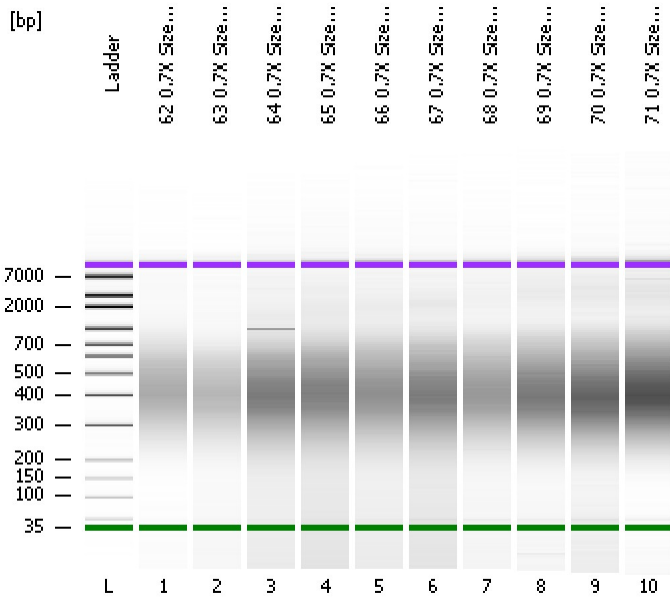


Assay Class: High Sensitivity DNA Assay
Data Path: C:\...8-31\2016-08-31_004_HiSeq574_SizeSelBisulfiteLibs_62-71.xad

Created: 8/31/2016 3:59:22 PM
Modified: 8/31/2016 4:50:36 PM

Electrophoresis File Run Summary



Instrument Information:

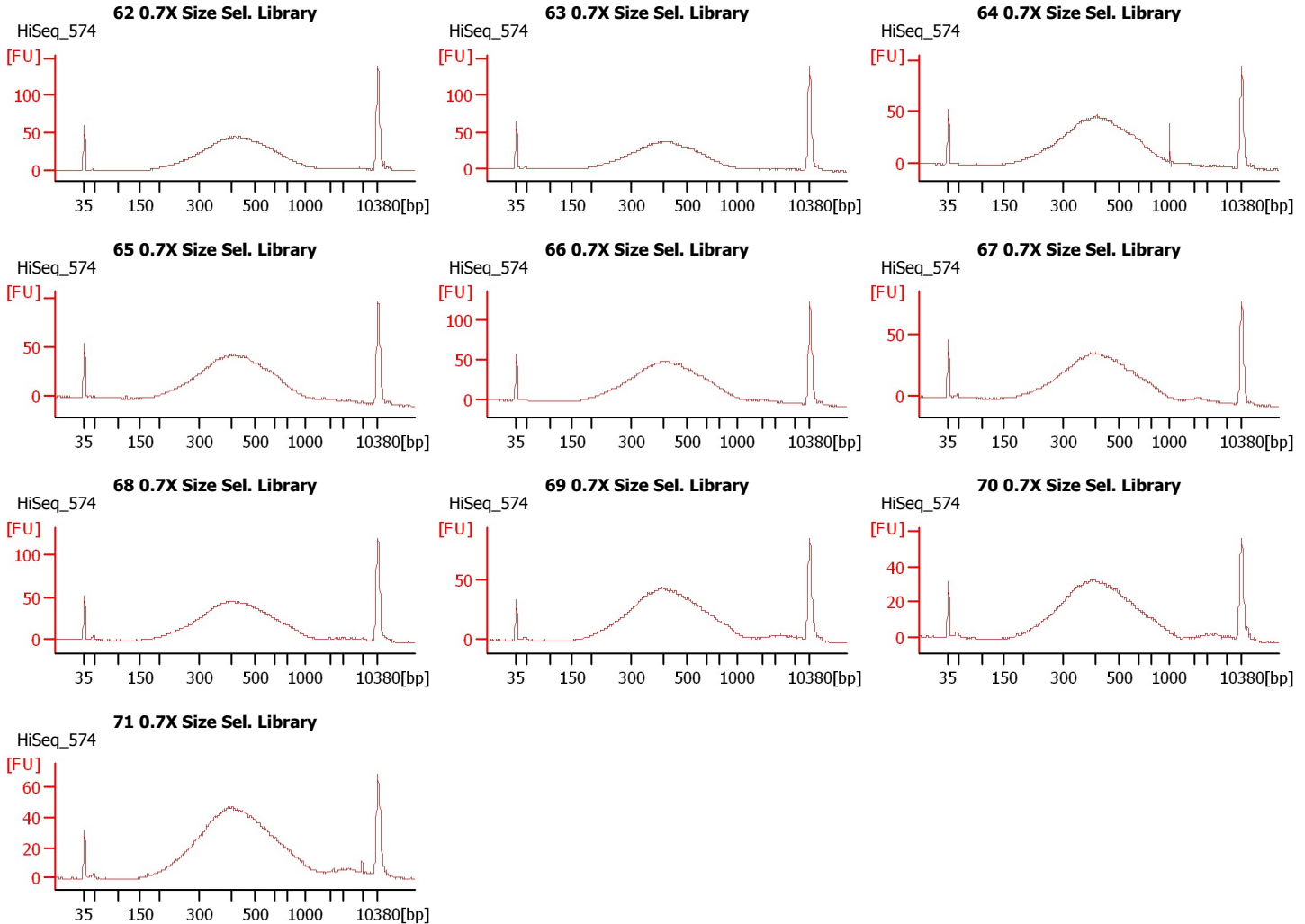
Instrument Name: DE13701086 Firmware: C.01.069
Serial#: DE13701086 Type: G2938B

Assay Information:

Assay Origin Path: C:\Program Files\Agilent\2100 bioanalyzer\2100 expert\assays\dsDNA\High Sensitivity DNA.xsy
Assay Class: High Sensitivity DNA Assay
Version: 1.03
Assay Comments: Copyright © 2003-2010 Agilent Technologies

Chip Information:

Chip Lot #:
Reagent Kit Lot #:
Chip Comments:



Assay Class: High Sensitivity DNA Assay
Data Path: C:\...8-31\2016-08-31_004_HiSeq574_SizeSelBisulfiteLibs_62-71.xad

Created: 8/31/2016 3:59:22 PM
Modified: 8/31/2016 4:50:36 PM

Electrophoresis File Run Summary (Chip Summary)

Sample Name	Sample Comment	Rest. Digest	Status	Observation	Result Label	Result Color
62 0.7X Size Sel. Library	HiSeq_574	<input type="checkbox"/>	✓			
63 0.7X Size Sel. Library	HiSeq_574	<input type="checkbox"/>	✓			
64 0.7X Size Sel. Library	HiSeq_574	<input type="checkbox"/>	✓			
65 0.7X Size Sel. Library	HiSeq_574	<input type="checkbox"/>	✓			
66 0.7X Size Sel. Library	HiSeq_574	<input type="checkbox"/>	✓			
67 0.7X Size Sel. Library	HiSeq_574	<input type="checkbox"/>	✓			
68 0.7X Size Sel. Library	HiSeq_574	<input type="checkbox"/>	✓			
69 0.7X Size Sel. Library	HiSeq_574	<input type="checkbox"/>	✓			
70 0.7X Size Sel. Library	HiSeq_574	<input type="checkbox"/>	✓			
71 0.7X Size Sel. Library	HiSeq_574	<input type="checkbox"/>	✓			
Ladder		<input type="checkbox"/>	✓			

Chip Lot #

Reagent Kit Lot #

Chip Comments :

Assay Class: High Sensitivity DNA Assay
Data Path: C:\...8-31\2016-08-31_004_HiSeq574_SizeSelBisulfiteLibs_62-71.xad

Created: 8/31/2016 3:59:22 PM
Modified: 8/31/2016 4:50:36 PM

Electrophoresis Assay Details

General Analysis Settings

Number of Available Sample and Ladder Wells (Max.) : 12
Minimum Visible Range [s] : 32
Maximum Visible Range [s] : 138
Start Analysis Time Range [s] : 33
End Analysis Time Range [s] : 137.5
Ladder Concentration [pg/μl] : 1950
Uses Standard Area for Ladder Fragments
Lower Marker Concentration [pg/μl] : 125
Upper Marker Concentration [pg/μl] : 75
Used Upper Marker for Quantitation
Standard Curve Fit is Point to Point
Show Data Aligned to Lower and Upper Marker

Integrator Settings

Integration Start Time [s] : 33.05
Integration End Time [s] : 137
Slope Threshold : 0.8
Height Threshold [FU] : 5
Area Threshold : 0.1
Width Threshold [s] : 0.6
Baseline Plateau [s] : 0.5

Filter Settings

Filter Width [s] : 0.5
Polynomial Order : 4

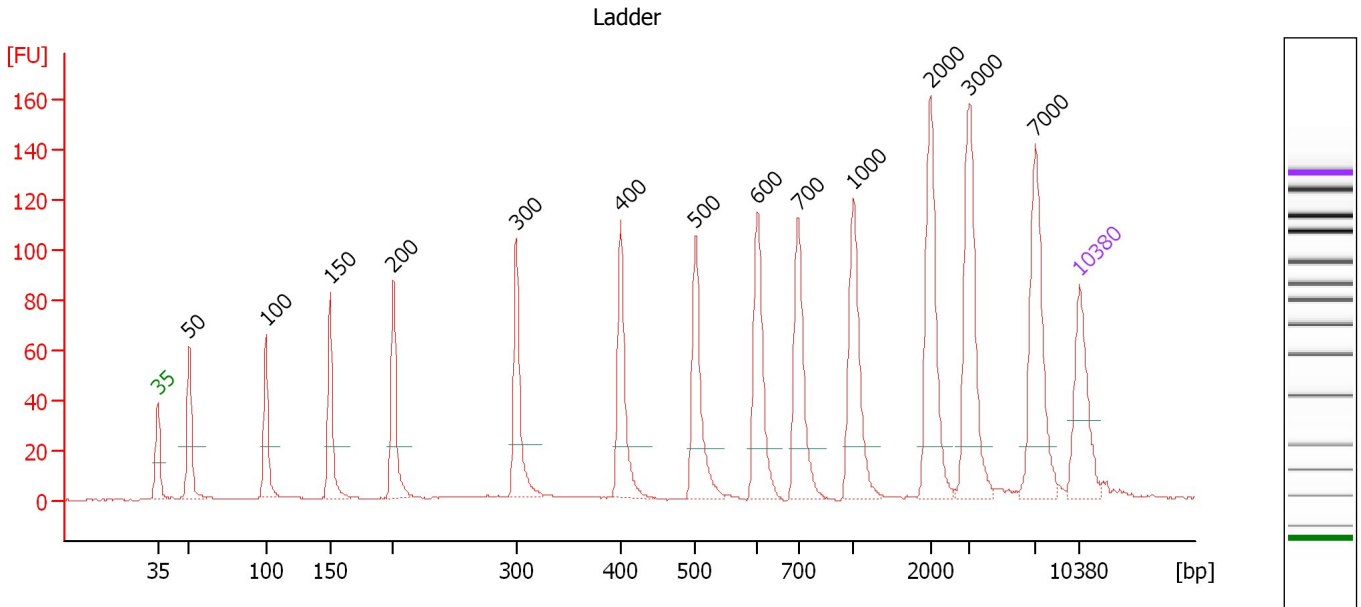
Ladder

Ladder Peak	Size	Area
1	35	160
2	50	210
3	100	208
4	150	221
5	200	242
6	300	270
7	400	305
8	500	306
9	600	336
10	700	321
11	1000	366
12	2000	413
13	3000	411
14	7000	400
15	10380	214

Assay Class: High Sensitivity DNA Assay
 Data Path: C:\...8-31\2016-08-31_004_HiSeq574_SizeSelBisulfiteLibs_62-71.xad

Created: 8/31/2016 3:59:22 PM
 Modified: 8/31/2016 4:50:36 PM

Electropherogram Summary



Overall Results for Ladder

Noise: 0.3

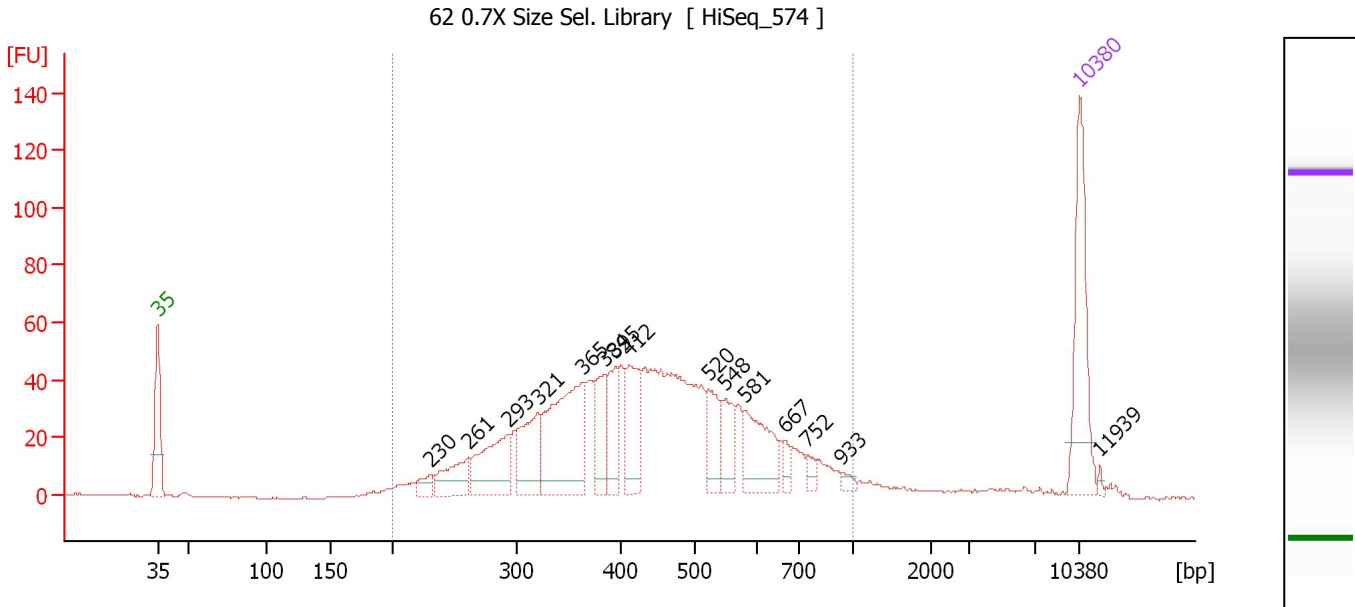
Peak table for Ladder

Peak	Size [bp]	Conc. [pg/μl]	Molarity [pmol/l]	Observations	Aligned Migration Time [s]
1	35	125.00	5,411.3	Lower Marker	43.00
2	50	150.00	4,545.5	Ladder Peak	45.41
3	100	150.00	2,272.7	Ladder Peak	51.24
4	150	150.00	1,515.2	Ladder Peak	56.11
5	200	150.00	1,136.4	Ladder Peak	60.89
6	300	150.00	757.6	Ladder Peak	70.24
7	400	150.00	568.2	Ladder Peak	78.14
8	500	150.00	454.5	Ladder Peak	83.83
9	600	150.00	378.8	Ladder Peak	88.56
10	700	150.00	324.7	Ladder Peak	91.64
11	1,000	150.00	227.3	Ladder Peak	95.84
12	2,000	150.00	113.6	Ladder Peak	101.67
13	3,000	150.00	75.8	Ladder Peak	104.66
14	7,000	150.00	32.5	Ladder Peak	109.63
15	10,380	75.00	10.9	Upper Marker	113.00

Assay Class: High Sensitivity DNA Assay
 Data Path: C:\...8-31\2016-08-31_004_HiSeq574_SizeSelBisulfiteLibs_62-71.xad

Created: 8/31/2016 3:59:22 PM
 Modified: 8/31/2016 4:50:36 PM

Electropherogram Summary Continued ...



Overall Results for sample 1 : 62 0.7X Size Sel. Library

Number of peaks found: 15 Corr. Area 1: 1,161.5
 Noise: 0.2

Peak table for sample 1 : 62 0.7X Size Sel. Library

Peak	Size [bp]	Conc. [pg/μl]	Molarity [pmol/l]	Observations	Aligned Migration Time [s]
1	35	125.00	5,411.3	Lower Marker	43.00
2	230	13.68	90.2		63.67
3	261	43.48	252.4		66.59
4	293	73.65	380.5		69.61
5	321	62.21	293.7		71.90
6	365	136.73	568.1		75.35
7	384	46.70	184.1		76.91
8	395	40.90	156.7		77.78
9	412	59.99	220.4		78.85
10	520	37.71	109.8		84.79
11	548	34.60	95.7		86.10
12	581	59.23	154.5		87.66
13	667	11.21	25.5		90.62
14	752	7.16	14.4		92.37
15	933	5.39	8.8		94.90
16	10,380	75.00	10.9	Upper Marker	113.00
17	11,939	0.00	0.0		114.56

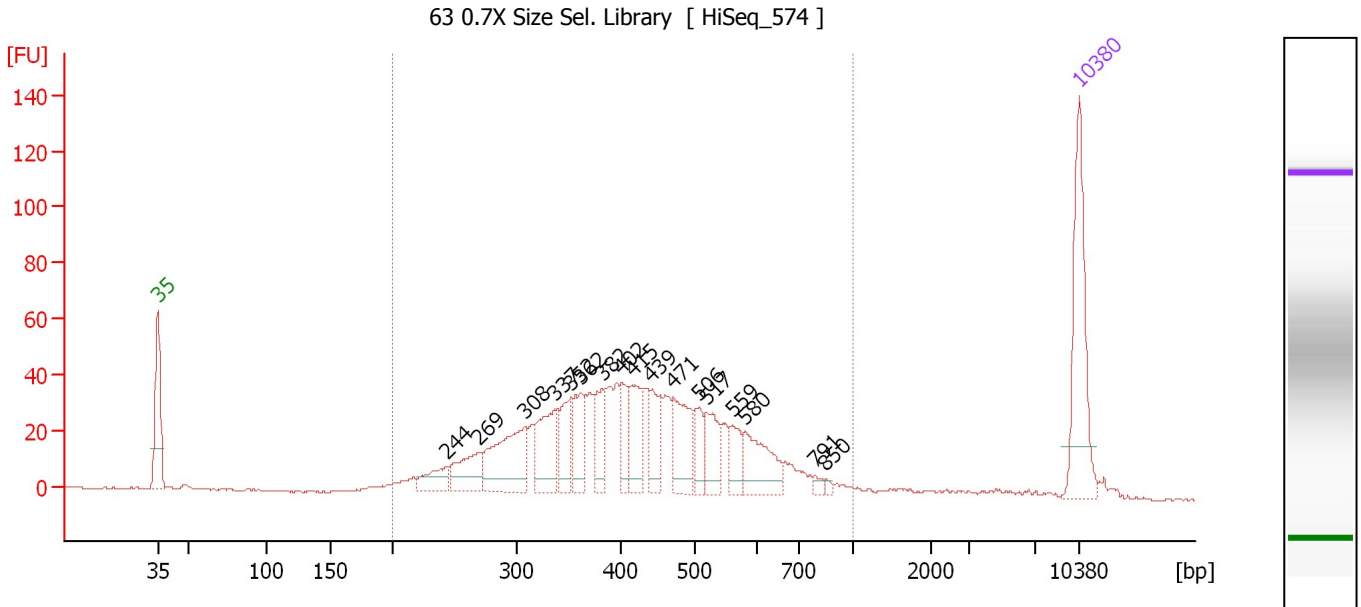
Region table for sample 1 : 62 0.7X Size Sel. Library

From [bp]	To [bp]	Average Size [bp]	Corr. Area	Molarity [pmol/l]	Co Conc. [pg/μl]	% of Total	Size distribution in CV [%]
200	1,000	450	1,161.5	3,995.9	1,040.14	94	31.5

Assay Class: High Sensitivity DNA Assay
 Data Path: C:\...8-31\2016-08-31_004_HiSeq574_SizeSelBisulfiteLibs_62-71.xad

Created: 8/31/2016 3:59:22 PM
 Modified: 8/31/2016 4:50:36 PM

Electropherogram Summary Continued ...



Overall Results for sample 2 : 63 0.7X Size Sel. Library

Number of peaks found: 17 Corr. Area 1: 944.8
 Noise: 0.3

Peak table for sample 2 : 63 0.7X Size Sel. Library

Peak	Size [bp]	Conc. [pg/μl]	Molarity [pmol/l]	Observations	Aligned Migration Time [s]
1	35	125.00	5,411.3	Lower Marker	43.00
2	244	25.01	155.4		64.98
3	269	41.20	232.2		67.32
4	308	83.30	409.6		70.88
5	337	57.12	256.7		73.17
6	352	33.27	143.3		74.34
7	362	37.34	156.1		75.17
8	382	33.52	132.9		76.73
9	402	26.37	99.4		78.24
10	415	41.29	150.6		79.02
11	439	34.44	118.7		80.39
12	471	50.07	161.0		82.19
13	506	21.55	64.6		84.09
14	517	35.06	102.8		84.63
15	559	20.82	56.4		86.63
16	580	46.42	121.3		87.60
17	791	4.75	9.1		92.92
18	850	2.46	4.4		93.75
19	10,380	75.00	10.9	Upper Marker	113.00

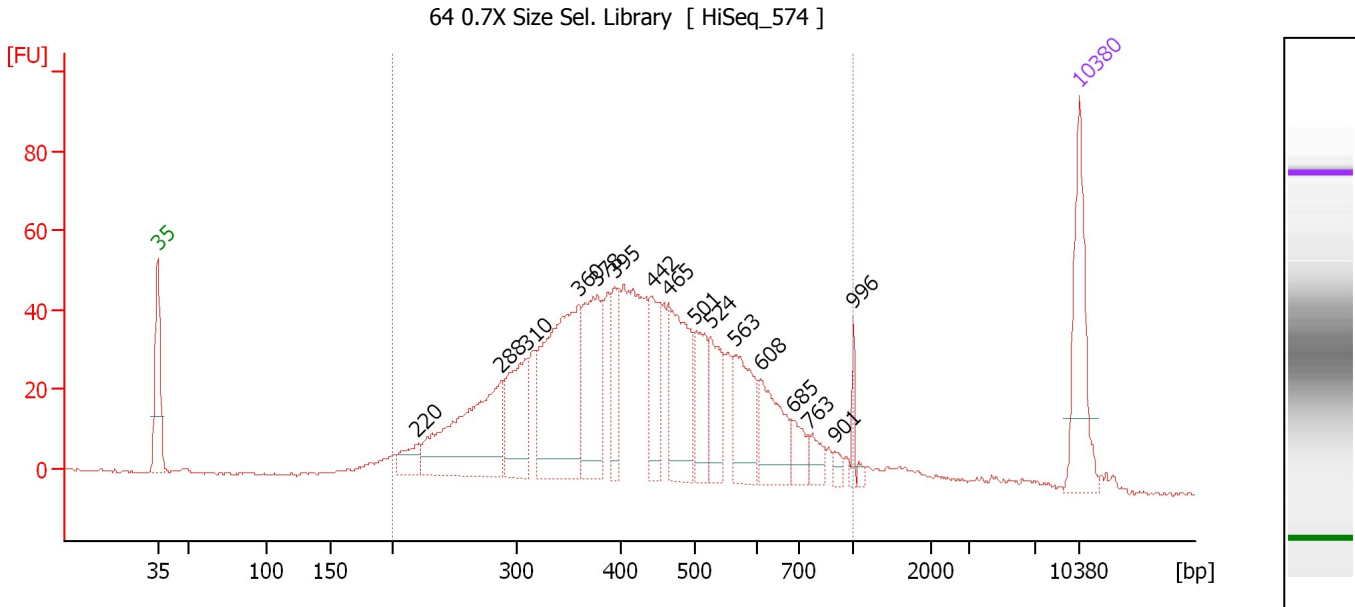
Region table for sample 2 : 63 0.7X Size Sel. Library

From [bp]	To [bp]	Average Size [bp]	Corr. Area	Molarity [pmol/l]	Co Conc. [pg/μl]	% of Total	Size distribution in CV [%]
200	1,000	430	944.8	3,208.7	808.77	95	29.6

Assay Class: High Sensitivity DNA Assay
 Data Path: C:\...8-31\2016-08-31_004_HiSeq574_SizeSelBisulfiteLibs_62-71.xad

Created: 8/31/2016 3:59:22 PM
 Modified: 8/31/2016 4:50:36 PM

Electropherogram Summary Continued ...



Overall Results for sample 3 : 64 0.7X Size Sel. Library

Number of peaks found: 16 Corr. Area 1: 1,242.7
 Noise: 0.3

Peak table for sample 3 : 64 0.7X Size Sel. Library

Peak	Size [bp]	Conc. [pg/μl]	Molarity [pmol/l]	Observations	Aligned Migration Time [s]
1	35	125.00	5,411.3	Lower Marker	43.00
2	220	26.07	179.7		62.74
3	288	189.60	999.2		69.07
4	310	91.49	447.7		71.00
5	360	218.87	920.4		75.01
6	378	109.96	441.0		76.39
7	395	47.60	182.7		77.73
8	442	59.79	204.8		80.55
9	465	108.15	352.5		81.83
10	501	54.66	165.4		83.86
11	524	53.21	154.0		84.95
12	563	71.11	191.2		86.83
13	608	63.63	158.5		88.81
14	685	22.80	50.4		91.18
15	763	16.28	32.3		92.52
16	901	6.98	11.7		94.45
17	996	14.38	21.9		95.78
18	10,380	75.00	10.9	Upper Marker	113.00

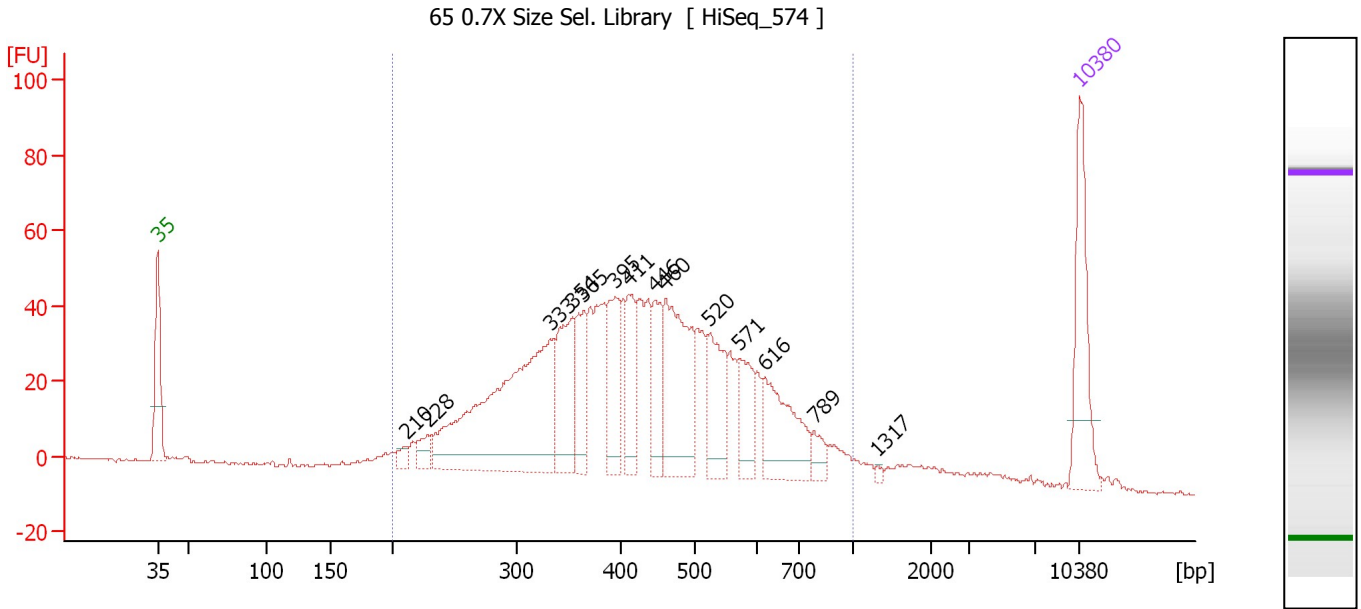
Region table for sample 3 : 64 0.7X Size Sel. Library

From [bp]	To [bp]	Average Size [bp]	Corr. Area	Molarity [pmol/l]	Co Conc. [pg/μl]	% of Total	Size distribution in CV [%]
200	1,000	438	1,242.7	5,976.7	1,509.62	94	32.2

Assay Class: High Sensitivity DNA Assay
 Data Path: C:\...8-31\2016-08-31_004_HiSeq574_SizeSelBisulfiteLibs_62-71.xad

Created: 8/31/2016 3:59:22 PM
 Modified: 8/31/2016 4:50:36 PM

Electropherogram Summary Continued ...



Overall Results for sample 4 : 65 0.7X Size Sel. Library

Number of peaks found: 14 Corr. Area 1: 1,239.2
 Noise: 0.4

Peak table for sample 4 : 65 0.7X Size Sel. Library

Peak	Size [bp]	Conc. [pg/μl]	Molarity [pmol/l]	Observations	Aligned Migration Time [s]
1	35	125.00	5,411.3	Lower Marker	43.00
2	210	10.29	74.2		61.85
3	228	18.34	121.8		63.52
4	333	331.30	1,509.0		72.82
5	354	90.41	386.5		74.54
6	365	59.65	247.9		75.35
7	395	71.05	272.3		77.77
8	411	60.77	223.9		78.78
9	446	51.42	174.7		80.75
10	460	140.50	462.7		81.56
11	520	69.43	202.1		84.80
12	571	44.18	117.3		87.17
13	616	85.38	210.1		89.04
14	789	16.19	31.1		92.88
15	1,317	2.55	2.9		97.69
16	10,380	75.00	10.9	Upper Marker	113.00

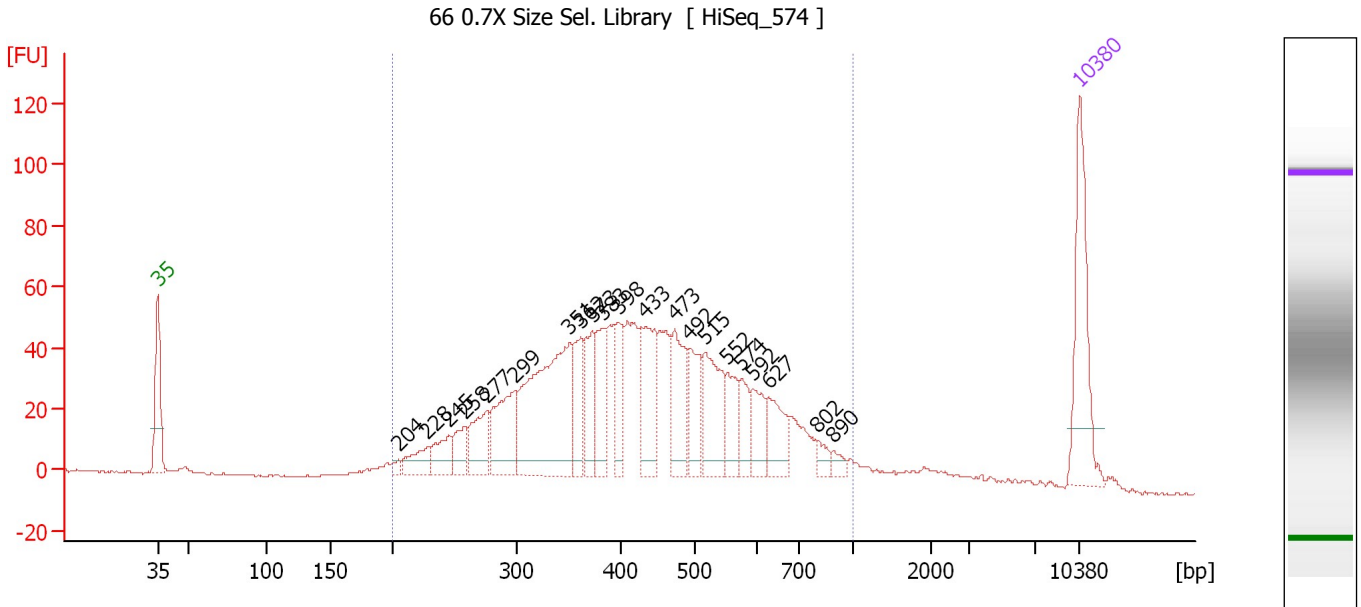
Region table for sample 4 : 65 0.7X Size Sel. Library

From [bp]	To [bp]	Average Size [bp]	Corr. Area	Molarity [pmol/l]	Co Conc. lor [pg/μl]	% of Total	Size distribution in CV [%]
200	1,000	442	1,239.2	5,558.0	1,419.46	93	31.7

Assay Class: High Sensitivity DNA Assay
 Data Path: C:\...8-31\2016-08-31_004_HiSeq574_SizeSelBisulfiteLibs_62-71.xad

Created: 8/31/2016 3:59:22 PM
 Modified: 8/31/2016 4:50:36 PM

Electropherogram Summary Continued ...



Overall Results for sample 5 : 66 0.7X Size Sel. Library

Number of peaks found: 21 Corr. Area 1: 1,363.2
 Noise: 0.4

Peak table for sample 5 : 66 0.7X Size Sel. Library

Peak	Size [bp]	Conc. [pg/μl]	Molarity [pmol/l]	Observations	Aligned Migration Time [s]
1	35	125.00	5,411.3	Lower Marker	43.00
2	204	5.99	44.4		61.28
3	228	29.96	199.2		63.49
4	245	30.84	190.4		65.13
5	258	29.80	175.4		66.26
6	277	46.80	256.2		68.06
7	299	76.40	387.5		70.12
8	351	211.28	911.8		74.28
9	362	42.72	178.7		75.15
10	373	40.34	164.1		75.97
11	383	50.26	198.9		76.79
12	398	44.27	168.3		78.03
13	433	77.24	270.2		80.03
14	473	63.59	203.8		82.29
15	492	47.92	147.6		83.37
16	515	72.17	212.3		84.55
17	552	35.43	97.2		86.29
18	574	25.43	67.1		87.32
19	592	31.92	81.6		88.19
20	627	38.12	92.2		89.38
21	802	10.19	19.2		93.07
22	890	6.84	11.6		94.31
23	10,380	75.00	10.9	Upper Marker	113.00

Assay Class: High Sensitivity DNA Assay
Data Path: C:\...8-31\2016-08-31_004_HiSeq574_SizeSelBisulfiteLibs_62-71.xad

Created: 8/31/2016 3:59:22 PM
Modified: 8/31/2016 4:50:36 PM

Electropherogram Summary Continued ...

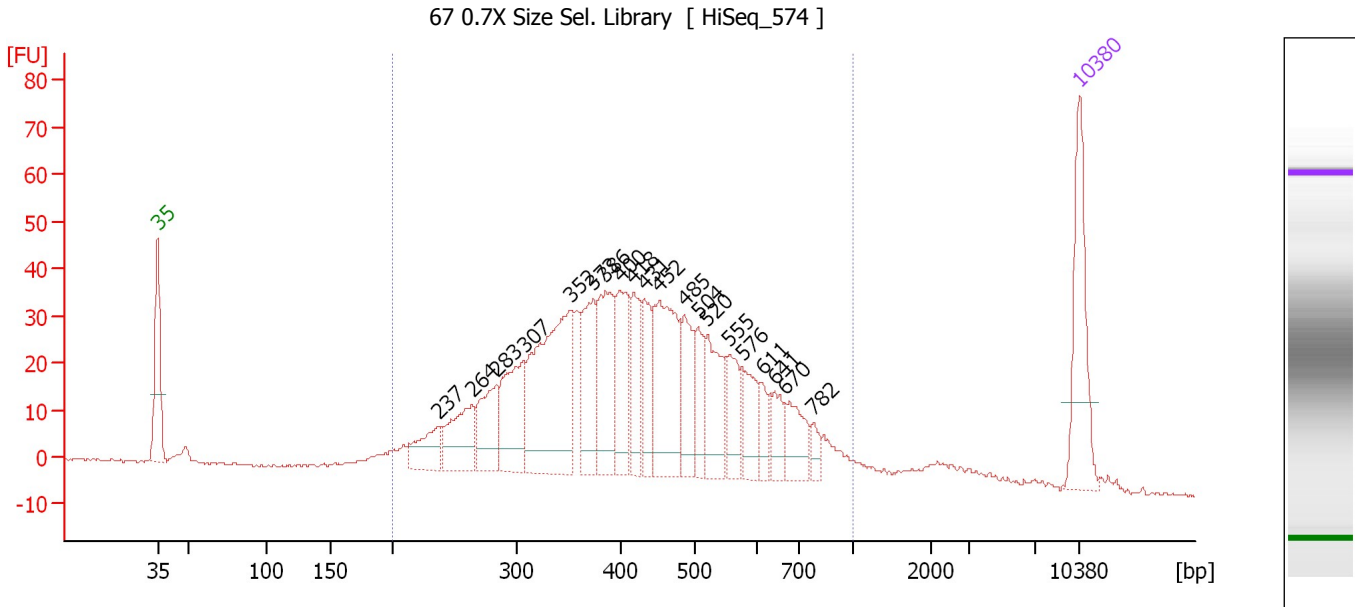
... Region table for sample 5 : **66 0.7X Size Sel. Library**

From [bp]	To [bp]	Average Size [bp]	Corr. Area	Molarity [pmol/l]	Co Conc. lor [pg/μl]	% of Total	Size distribution in CV [%]
200	1,000	444	1,363.2	5,312.9	1,357.06	93	32.3

Assay Class: High Sensitivity DNA Assay
 Data Path: C:\...8-31\2016-08-31_004_HiSeq574_SizeSelBisulfiteLibs_62-71.xad

Created: 8/31/2016 3:59:22 PM
 Modified: 8/31/2016 4:50:36 PM

Electropherogram Summary Continued ...



Overall Results for sample 6 : 67 0.7X Size Sel. Library

Number of peaks found: 20 Corr. Area 1: 983.9
 Noise: 0.3

Peak table for sample 6 : 67 0.7X Size Sel. Library

Peak	Size [bp]	Conc. [pg/μl]	Molarity [pmol/l]	Observations	Aligned Migration Time [s]
1	35	125.00	5,411.3	Lower Marker	43.00
2	237	47.55	303.9		64.35
3	264	71.72	411.9		66.85
4	283	64.12	342.9		68.68
5	307	96.71	476.9		70.81
6	352	215.37	926.9		74.35
7	373	82.35	334.4		76.02
8	386	96.51	379.2		77.01
9	400	76.55	289.8		78.16
10	418	52.91	192.0		79.15
11	431	50.55	177.6		79.93
12	452	128.78	431.3		81.13
13	485	55.06	171.9		83.00
14	504	40.39	121.3		84.04
15	520	69.60	202.9		84.77
16	555	42.77	116.7		86.44
17	576	42.96	113.0		87.43
18	611	20.49	50.8		88.89
19	641	26.97	63.8		89.82
20	670	40.43	91.5		90.71
21	782	11.44	22.2		92.79
22	10,380	75.00	10.9	Upper Marker	113.00

Assay Class: High Sensitivity DNA Assay
Data Path: C:\...8-31\2016-08-31_004_HiSeq574_SizeSelBisulfiteLibs_62-71.xad

Created: 8/31/2016 3:59:22 PM
Modified: 8/31/2016 4:50:36 PM

Electropherogram Summary Continued ...

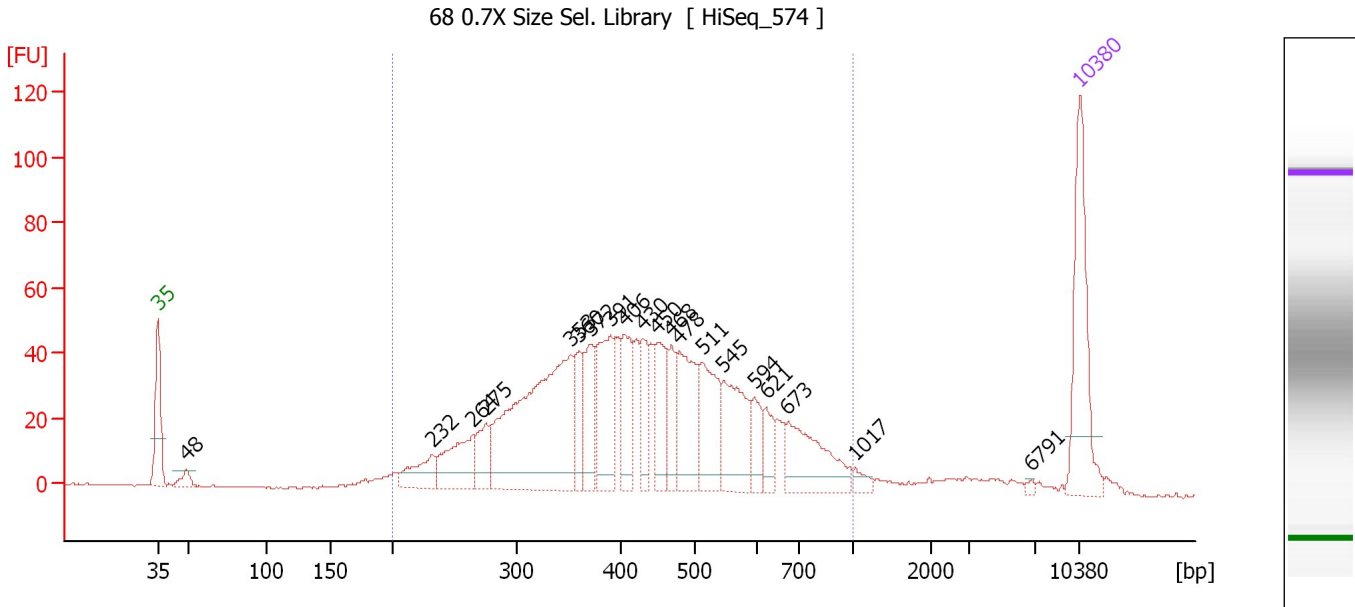
... Region table for sample 6 : **67 0.7X Size Sel. Library**

From [bp]	To [bp]	Average Size [bp]	Corr. Area	Molarity [pmol/l]	Co Conc. lor [pg/μl]	% of Total	Size distribution in CV [%]
200	1,000	439	983.9	5,721.9	1,451.42	94	31.8

Assay Class: High Sensitivity DNA Assay
 Data Path: C:\...8-31\2016-08-31_004_HiSeq574_SizeSelBisulfiteLibs_62-71.xad

Created: 8/31/2016 3:59:22 PM
 Modified: 8/31/2016 4:50:36 PM

Electropherogram Summary Continued ...



Overall Results for sample 7 : 68 0.7X Size Sel. Library

Number of peaks found: 20 Corr. Area 1: 1,208.7
 Noise: 0.3

Peak table for sample 7 : 68 0.7X Size Sel. Library

Peak	Size [bp]	Conc. [pg/μl]	Molarity [pmol/l]	Observations	Aligned Migration Time [s]
1	35	125.00	5,411.3	Lower Marker	43.00
2	48	11.37	355.5		45.16
3	232	34.94	228.4		63.86
4	264	60.51	346.7		66.91
5	275	31.03	170.9		67.91
6	353	247.95	1,063.6		74.44
7	360	39.01	164.2		74.97
8	372	48.03	195.7		75.92
9	391	74.12	287.6		77.39
10	406	50.91	189.9		78.50
11	430	35.29	124.3		79.87
12	450	49.84	167.9		80.98
13	468	32.70	105.8		82.03
14	478	72.42	229.8		82.56
15	511	69.46	206.0		84.35
16	545	67.70	188.1		85.98
17	594	24.22	61.7		88.30
18	621	21.17	51.7		89.19
19	673	69.14	155.5		90.83
20	1,017	7.27	10.8		95.93
21	6,791	1.92	0.4		109.37
22	10,380	75.00	10.9	Upper Marker	113.00

Assay Class: High Sensitivity DNA Assay
Data Path: C:\...8-31\2016-08-31_004_HiSeq574_SizeSelBisulfiteLibs_62-71.xad

Created: 8/31/2016 3:59:22 PM
Modified: 8/31/2016 4:50:36 PM

Electropherogram Summary Continued ...

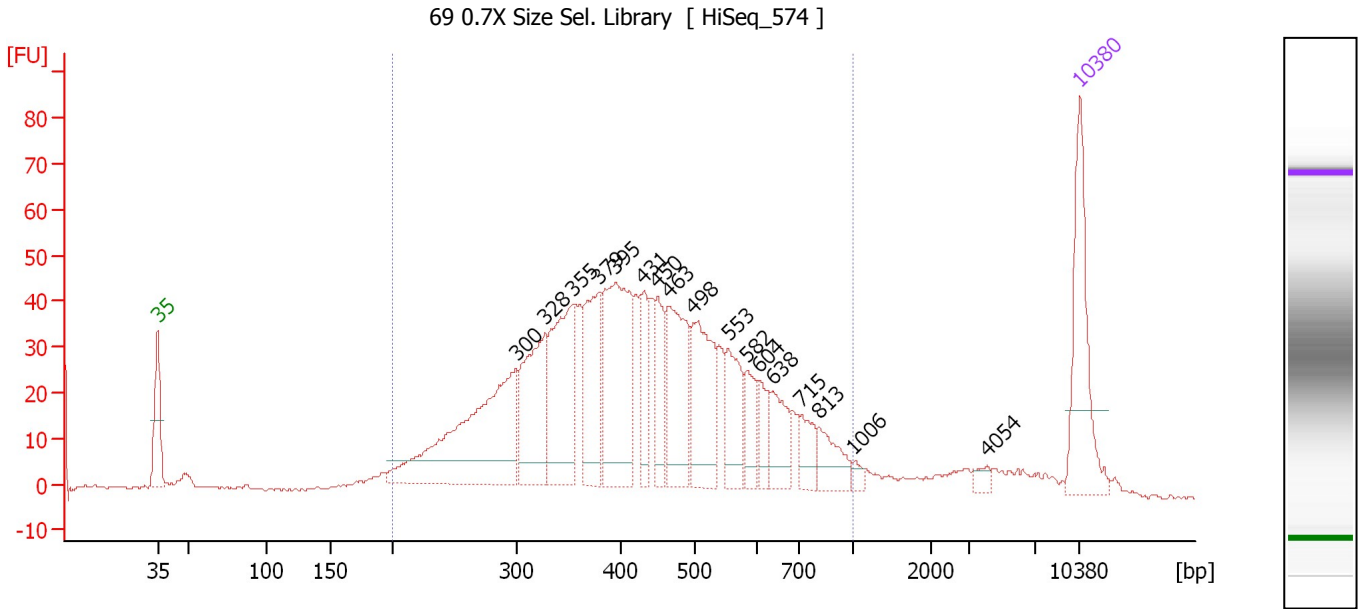
... Region table for sample 7 : **68 0.7X Size Sel. Library**

From [bp]	To [bp]	Average Size [bp]	Corr. Area	Molarity [pmol/l]	Co Conc. lor [pg/μl]	% of Total	Size distribution in CV [%]
200	1,000	446	1,208.7	4,474.7	1,148.08	92	32.4

Assay Class: High Sensitivity DNA Assay
 Data Path: C:\...8-31\2016-08-31_004_HiSeq574_SizeSelBisulfiteLibs_62-71.xad

Created: 8/31/2016 3:59:22 PM
 Modified: 8/31/2016 4:50:36 PM

Electropherogram Summary Continued ...



Overall Results for sample 8 : 69 0.7X Size Sel. Library

Number of peaks found: 17 Corr. Area 1: 1,130.7
 Noise: 0.3

Peak table for sample 8 : 69 0.7X Size Sel. Library

Peak	Size [bp]	Conc. [pg/μl]	Molarity [pmol/l]	Observations	Aligned Migration Time [s]
1	35	125.00	5,411.3	Lower Marker	43.00
2	300	227.34	1,148.6		70.23
3	328	114.41	528.6		72.45
4	355	127.97	546.6		74.56
5	379	88.57	353.7		76.52
6	395	155.92	597.3		77.79
7	431	42.45	149.3		79.90
8	450	46.38	156.3		80.96
9	463	97.57	319.0		81.75
10	498	92.76	282.3		83.71
11	553	52.12	142.7		86.35
12	582	29.24	76.1		87.73
13	604	22.85	57.3		88.68
14	638	37.43	88.8		89.74
15	715	23.99	50.8		91.85
16	813	29.41	54.8		93.23
17	1,006	5.86	8.8		95.87
18	4,054	6.55	2.4		105.97
19	10,380	75.00	10.9	Upper Marker	113.00

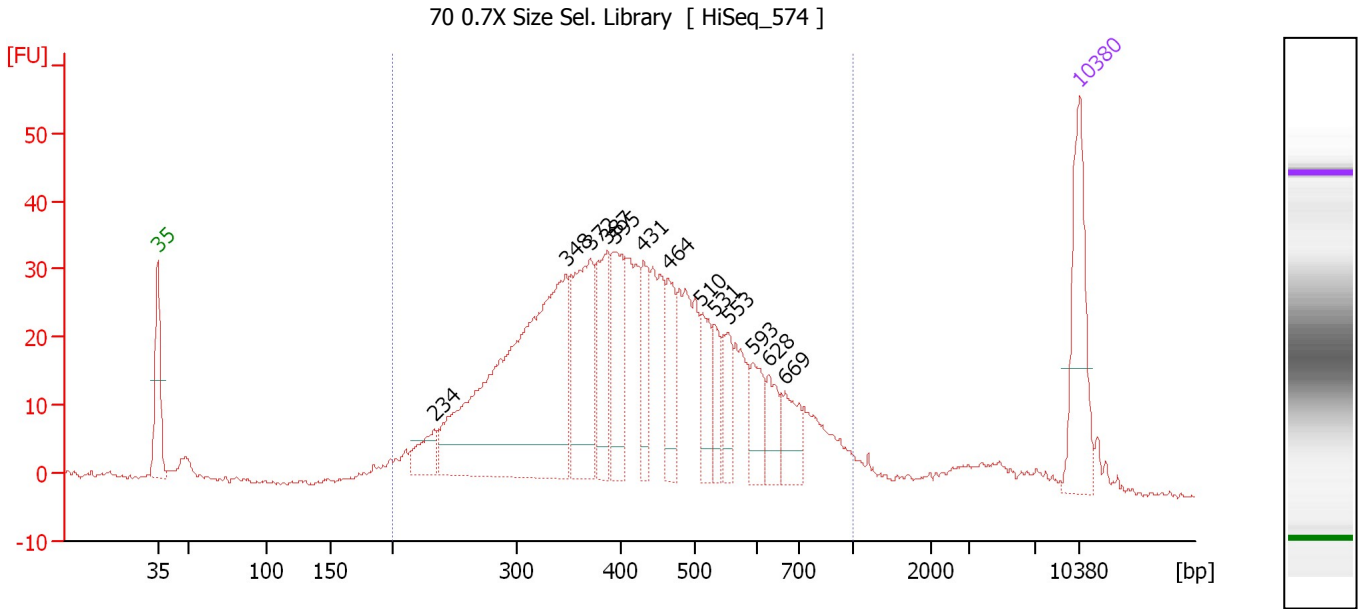
Region table for sample 8 : 69 0.7X Size Sel. Library

From [bp]	To [bp]	Average Size [bp]	Corr. Area	Molarity [pmol/l]	Co Conc. [pg/μl]	% of Total	Size distribution in CV [%]
200	1,000	442	1,130.7	5,553.3	1,410.74	92	32.7

Assay Class: High Sensitivity DNA Assay
 Data Path: C:\...8-31\2016-08-31_004_HiSeq574_SizeSelBisulfiteLibs_62-71.xad

Created: 8/31/2016 3:59:22 PM
 Modified: 8/31/2016 4:50:36 PM

Electropherogram Summary Continued ...



Overall Results for sample 9 : 70 0.7X Size Sel. Library

Number of peaks found: 13 Corr. Area 1: 846.2
 Noise: 0.3

Peak table for sample 9 : 70 0.7X Size Sel. Library

Peak	Size [bp]	Conc. [pg/μl]	Molarity [pmol/l]	Observations	Aligned Migration Time [s]
1	35	125.00	5,411.3	Lower Marker	43.00
2	234	34.96	226.5		64.05
3	348	441.17	1,923.1		74.00
4	372	138.96	566.7		75.89
5	387	75.07	294.0		77.11
6	395	75.00	287.8		77.74
7	431	47.18	166.0		79.89
8	464	55.03	179.7		81.79
9	510	43.96	130.5		84.32
10	531	30.66	87.4		85.32
11	553	34.70	95.1		86.32
12	593	37.04	94.7		88.21
13	628	30.62	73.9		89.42
14	669	35.30	80.0		90.68
15	10,380	75.00	10.9	Upper Marker	113.00

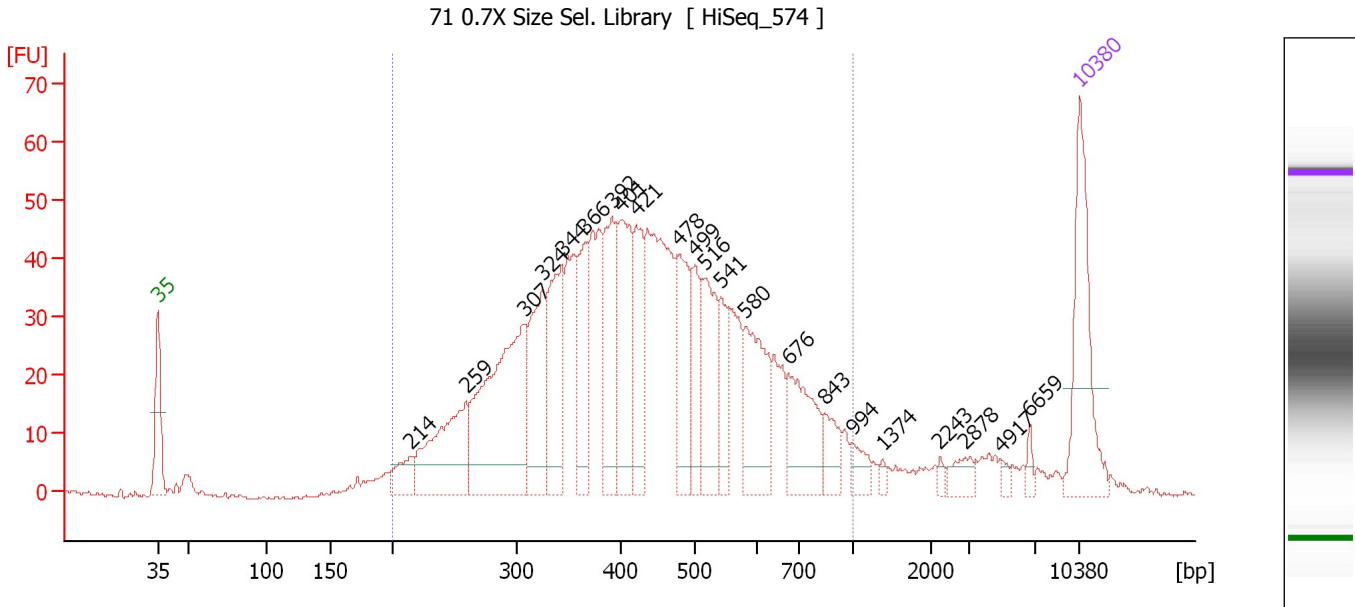
Region table for sample 9 : 70 0.7X Size Sel. Library

From [bp]	To [bp]	Average Size [bp]	Corr. Area	Molarity [pmol/l]	Co Conc. [pg/μl]	% of Total	Size distribution in CV [%]
200	1,000	437	846.2	6,217.7	1,569.85	93	32.6

Assay Class: High Sensitivity DNA Assay
 Data Path: C:\...8-31\2016-08-31_004_HiSeq574_SizeSelBisulfiteLibs_62-71.xad

Created: 8/31/2016 3:59:22 PM
 Modified: 8/31/2016 4:50:36 PM

Electropherogram Summary Continued ...



Overall Results for sample 10 : 71 0.7X Size Sel. Library

Number of peaks found: 22 Corr. Area 1: 1,182.4
 Noise: 0.4

Peak table for sample 10 : 71 0.7X Size Sel. Library

Peak	Size [bp]	Conc. [pg/μl]	Molarity [pmol/l]	Observations	Aligned Migration Time [s]
1	35	125.00	5,411.3	Lower Marker	43.00
2	214	26.02	184.7		62.15
3	259	111.31	650.7		66.42
4	307	209.26	1,032.4		70.80
5	324	94.94	443.4		72.17
6	344	93.24	410.9		73.70
7	366	67.55	279.8		75.44
8	392	82.78	320.1		77.50
9	401	98.70	373.2		78.18
10	421	62.05	223.2		79.35
11	478	77.24	245.0		82.56
12	499	46.26	140.5		83.78
13	516	71.81	211.1		84.57
14	541	34.74	97.3		85.78
15	580	80.71	210.7		87.63
16	676	66.30	148.6		90.90
17	843	23.05	41.4		93.64
18	994	14.58	22.2		95.75
19	1,374	4.23	4.7		98.02
20	2,243	3.82	2.6		102.40
21	2,878	12.40	6.5		104.30
22	4,917	4.56	1.4		107.04
23	6,659	5.27	1.2		109.20
24	10,380	75.00	10.9	Upper Marker	113.00

Assay Class: High Sensitivity DNA Assay
Data Path: C:\...8-31\2016-08-31_004_HiSeq574_SizeSelBisulfiteLibs_62-71.xad

Created: 8/31/2016 3:59:22 PM
Modified: 8/31/2016 4:50:36 PM

Electropherogram Summary Continued ...

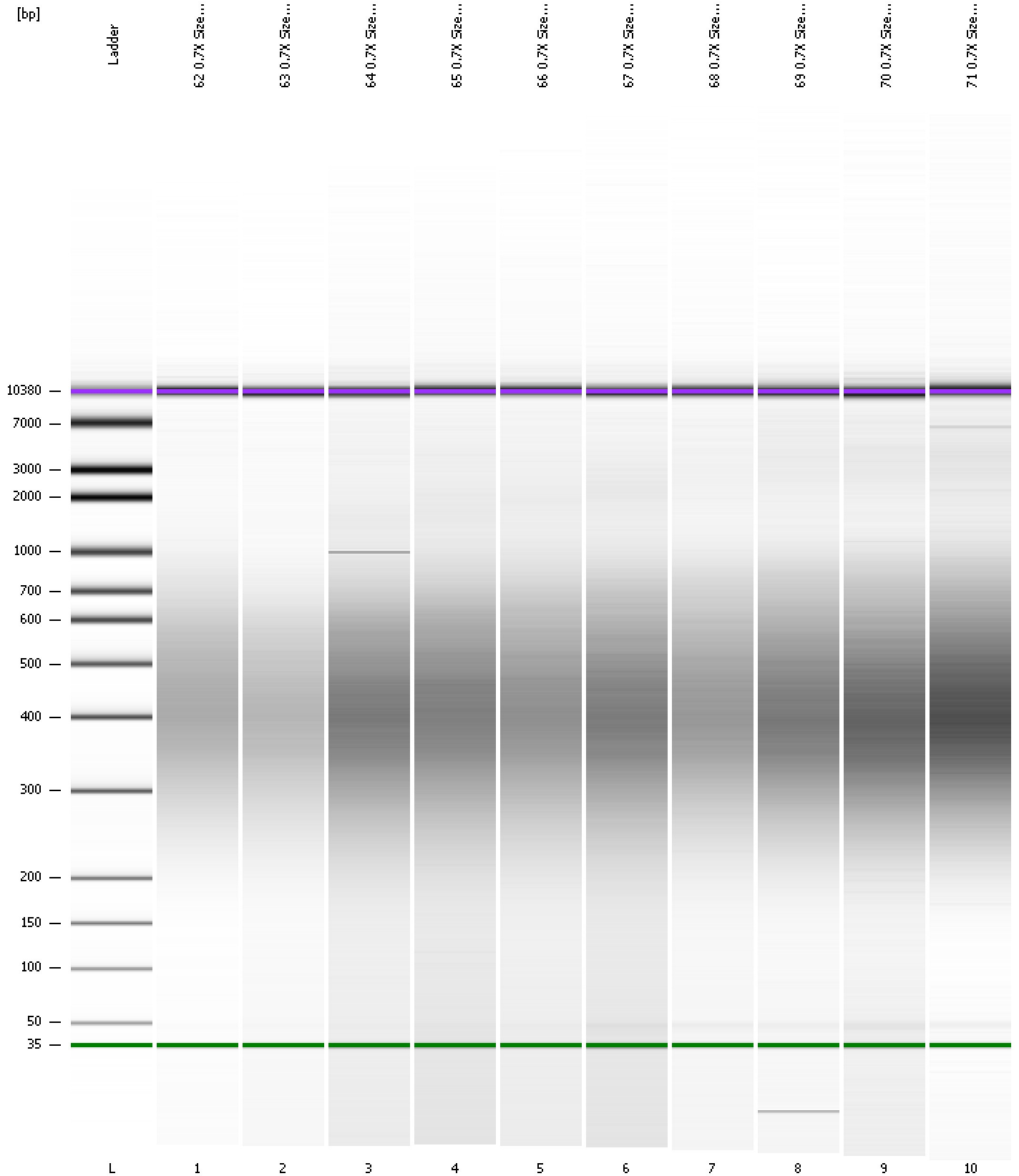
... Region table for sample 10 : 71 0.7X Size Sel. Library

From [bp]	To [bp]	Average Size [bp]	Corr. Area	Molarity [pmol/l]	Co Conc. lor [pg/μl]	% of Total	Size distribution in CV [%]
200	1,000	447	1,182.4	6,718.0	■ 1,721.78	92	33.1

Assay Class: High Sensitivity DNA Assay
Data Path: C:\...8-31\2016-08-31_004_HiSeq574_SizeSelBisulfiteLibs_62-71.xad

Created: 8/31/2016 3:59:22 PM
Modified: 8/31/2016 4:50:36 PM

Gel Image



Assay Class: High Sensitivity DNA Assay
 Data Path: C:\...8-31\2016-08-31_004_HiSeq574_SizeSelBisulfiteLibs_62-71.xad

Created: 8/31/2016 3:59:22 PM
 Modified: 8/31/2016 4:50:36 PM

Run Logbook

Description	Number	Source	Category	Sub Category	Time	Time Zone	User	Host
Run ended on port 1 (Number of wells acquired: 12)		Instrument	Run		8/31/2016 4:39:51 PM	(GMT --07:00) Pacific Standard Time	UC Davis	D8XSMGH1
Run started on port 1 (File: C:\Program Files\Agilent\2100 bioanalyzer\2100 expert\data\2016-08-31\2016-08-31_004.xad)		Instrument	Run		8/31/2016 3:59:28 PM	(GMT --07:00) Pacific Standard Time	UC Davis	D8XSMGH1
Product Number : G2938B		Instrument	Run		8/31/2016 3:59:28 PM	(GMT --07:00) Pacific Standard Time	UC Davis	D8XSMGH1
Name :		Instrument	Run		8/31/2016 3:59:28 PM	(GMT --07:00) Pacific Standard Time	UC Davis	D8XSMGH1
Vendor : Agilent Technologies		Instrument	Run		8/31/2016 3:59:28 PM	(GMT --07:00) Pacific Standard Time	UC Davis	D8XSMGH1
Serial# : DE13701086		Instrument	Run		8/31/2016 3:59:28 PM	(GMT --07:00) Pacific Standard Time	UC Davis	D8XSMGH1
Firmware : C.01.069		Instrument	Run		8/31/2016 3:59:28 PM	(GMT --07:00) Pacific Standard Time	UC Davis	D8XSMGH1
Cartridge : Electrode		Instrument	Run		8/31/2016 3:59:28 PM	(GMT --07:00) Pacific Standard Time	UC Davis	D8XSMGH1