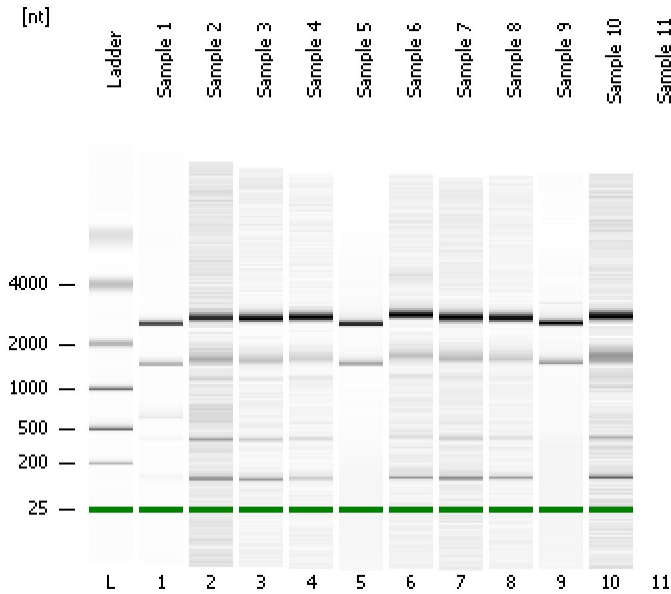


Assay Class: Prokaryote Total RNA Pico  
Data Path: C:\... bioanalyzer\2100 expert\data\2016-12-08\2016-12-08\_002.xad

Created: 12/8/2016 4:36:29 PM  
Modified: 12/9/2016 3:46:43 PM

**Electrophoresis File Run Summary**



Instrument Information:

Instrument Name: DE13701086      Firmware: C.01.069  
Serial#: DE13701086      Type: G2938B

Assay Information:

Assay Origin Path: C:\Program Files\Agilent\2100 bioanalyzer\2100 expert\assays\RNA\Prokaryote Total RNA Pico Series II.xsy

Assay Class: Prokaryote Total RNA Pico  
Version: 2.5  
Assay Comments: Total RNA Analysis pg sensitivity (Prokaryote)

© Copyright 2003 - 2009 Agilent Technologies, Inc.

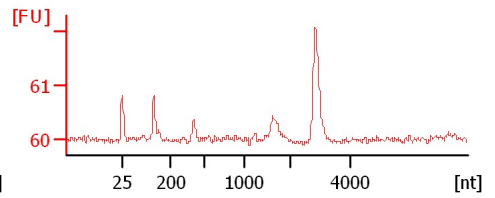
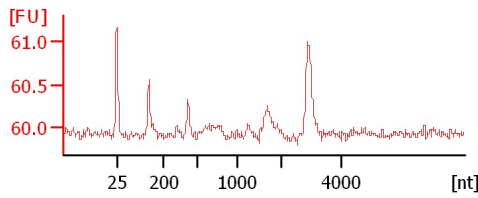
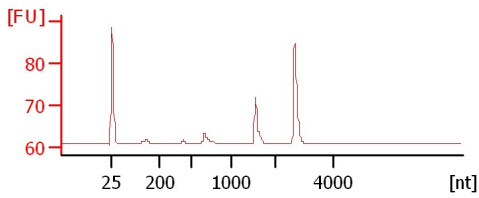
Chip Information:

Chip Lot #:   
Reagent Kit Lot #:   
Chip Comments:

**Sample 1**

**Sample 2**

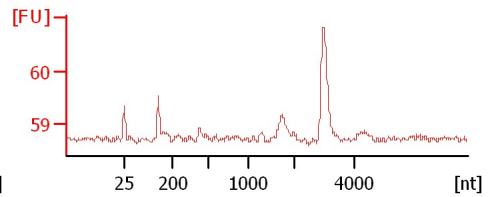
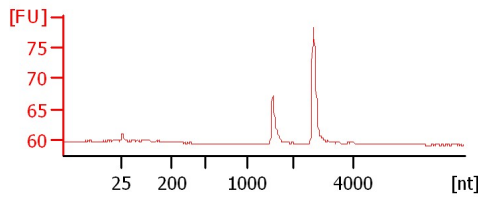
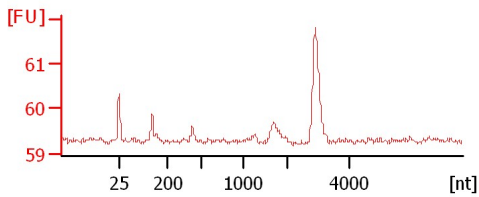
**Sample 3**



**Sample 4**

**Sample 5**

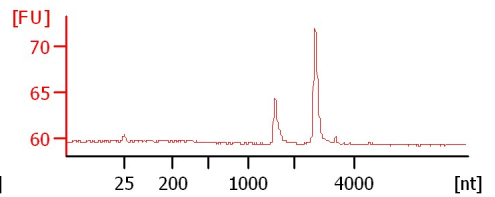
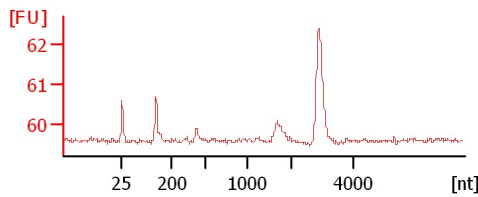
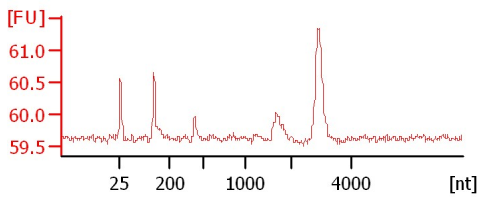
**Sample 6**



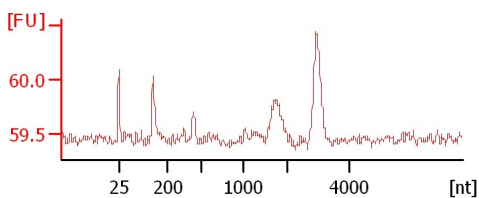
**Sample 7**

**Sample 8**

**Sample 9**



**Sample 10**



Assay Class: Prokaryote Total RNA Pico  
Data Path: C:\... bioanalyzer\2100 expert\data\2016-12-08\2016-12-08\_002.xad

Created: 12/8/2016 4:36:29 PM  
Modified: 12/9/2016 3:46:43 PM

**Electrophoresis File Run Summary (Chip Summary)**

Sample Name	Sample Comment	Status	Result Label	Result Color
Sample 1		✓		
Sample 2		✓		
Sample 3		✓		
Sample 4		✓		
Sample 5		✓		
Sample 6		✓		
Sample 7		✓		
Sample 8		✓		
Sample 9		✓		
Sample 10		✓		
Sample 11		✓		
Ladder		✓		

**Chip Lot #**

**Reagent Kit Lot #**

**Chip Comments :**

Assay Class: Prokaryote Total RNA Pico  
Data Path: C:\... bioanalyzer\2100 expert\data\2016-12-08\2016-12-08\_002.xad

Created: 12/8/2016 4:36:29 PM  
Modified: 12/9/2016 3:46:43 PM

## Electrophoresis Assay Details

### General Analysis Settings

Number of Available Sample and Ladder Wells (Max.) : 12  
Minimum Visible Range [s] : 17  
Maximum Visible Range [s] : 70  
Start Analysis Time Range [s] : 18  
End Analysis Time Range [s] : 69  
Ladder Concentration [pg/ $\mu$ l] : 1000  
Lower Marker Concentration [pg/ $\mu$ l] : 0  
Upper Marker Concentration [pg/ $\mu$ l] : 0  
Used Lower Marker for Quantitation  
Standard Curve Fit is Logarithmic  
Show Data Aligned to Lower Marker

### Integrator Settings

Integration Start Time [s] : 18  
Integration End Time [s] : 69  
Slope Threshold : 0.6  
Height Threshold [FU] : 0.5  
Area Threshold : 0.2  
Width Threshold [s] : 0.3  
Baseline Plateau [s] : 6

### Filter Settings

Filter Width [s] : 0.5  
Polynomial Order : 4

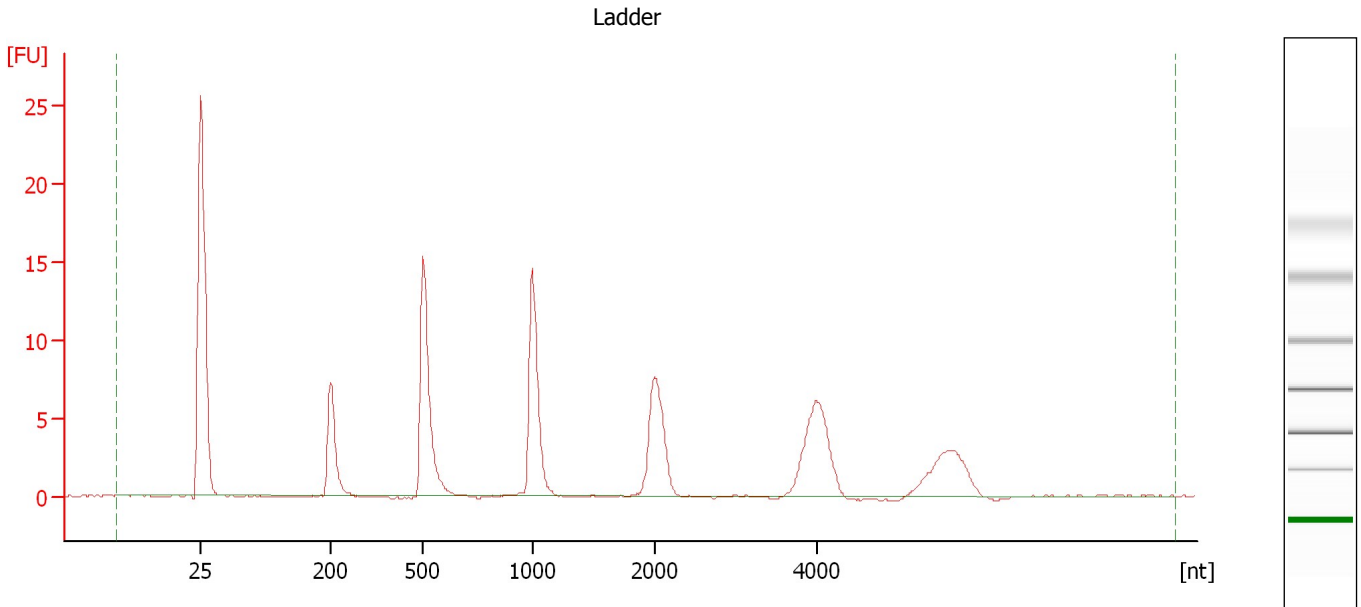
### Ladder

Ladder Peak	Size
1	25
2	200
3	500
4	1000
5	2000
6	4000

Assay Class: Prokaryote Total RNA Pico  
Data Path: C:\... bioanalyzer\2100 expert\data\2016-12-08\2016-12-08\_002.xad

Created: 12/8/2016 4:36:29 PM  
Modified: 12/9/2016 3:46:43 PM

**Electropherogram Summary**



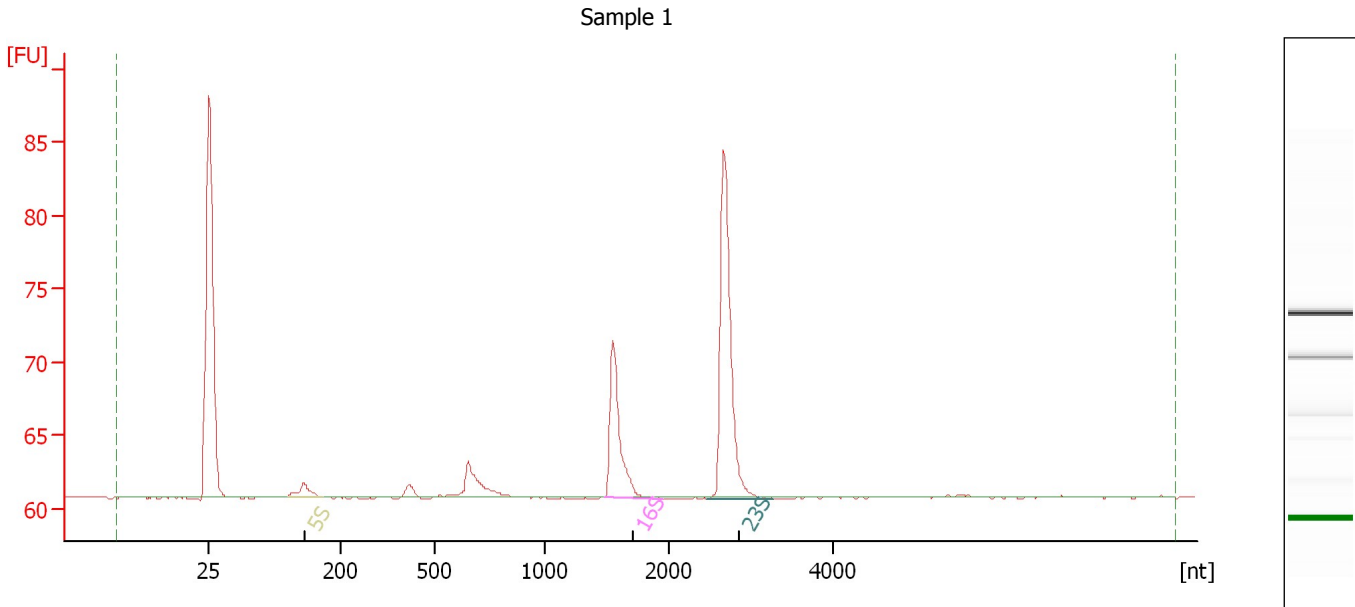
**Overall Results for Ladder**

RNA Area: 84.8                      RNA Concentration: 1,000 pg/μl

Assay Class: Prokaryote Total RNA Pico  
 Data Path: C:\... bioanalyzer\2100 expert\data\2016-12-08\2016-12-08\_002.xad

Created: 12/8/2016 4:36:29 PM  
 Modified: 12/9/2016 3:46:43 PM

**Electropherogram Summary Continued ...**



**Setpoint Deviations for sample 1 : Sample 1**

Baseline Plateau [s] : 1

**Overall Results for sample 1 : Sample 1**

RNA Area: 49.9                      RNA Integrity Number (RIN): 8 (B.02.08, Anomaly Threshold(s) manually adapted)  
 RNA Concentration: 589 pg/μl  
 rRNA Ratio [23s / 16s]: 2.1

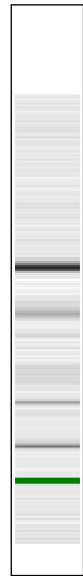
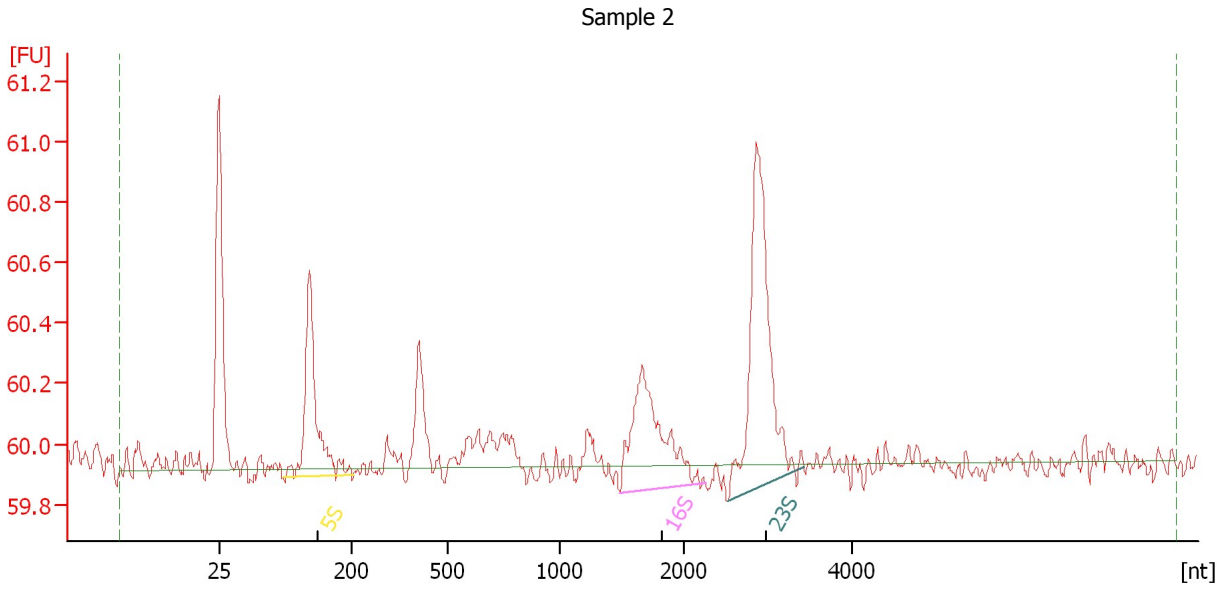
**Fragment table for sample 1 : Sample 1**

Name	Start Size [nt]	End Size [nt]	Area	% of total Area
5S	130	176	1.9	3.9
16S	1,478	1,953	12.8	25.6
23S	2,475	3,265	26.8	53.7

Assay Class: Prokaryote Total RNA Pico  
 Data Path: C:\... bioanalyzer\2100 expert\data\2016-12-08\2016-12-08\_002.xad

Created: 12/8/2016 4:36:29 PM  
 Modified: 12/9/2016 3:46:43 PM

**Electropherogram Summary Continued ...**



**Setpoint Deviations for sample 2 : Sample 2**

Height Threshold [FU] : 0.2                      Baseline Plateau [s] : 0.2

**Overall Results for sample 2 : Sample 2**

RNA Area: 6.5                                      RNA Integrity Number (RIN): 4.6 (B.02.08,  
 RNA Concentration: 76 pg/μl                                      Anomaly Threshold(s)  
 rRNA Ratio [23s / 16s]: 1.6                                      manually adapted)

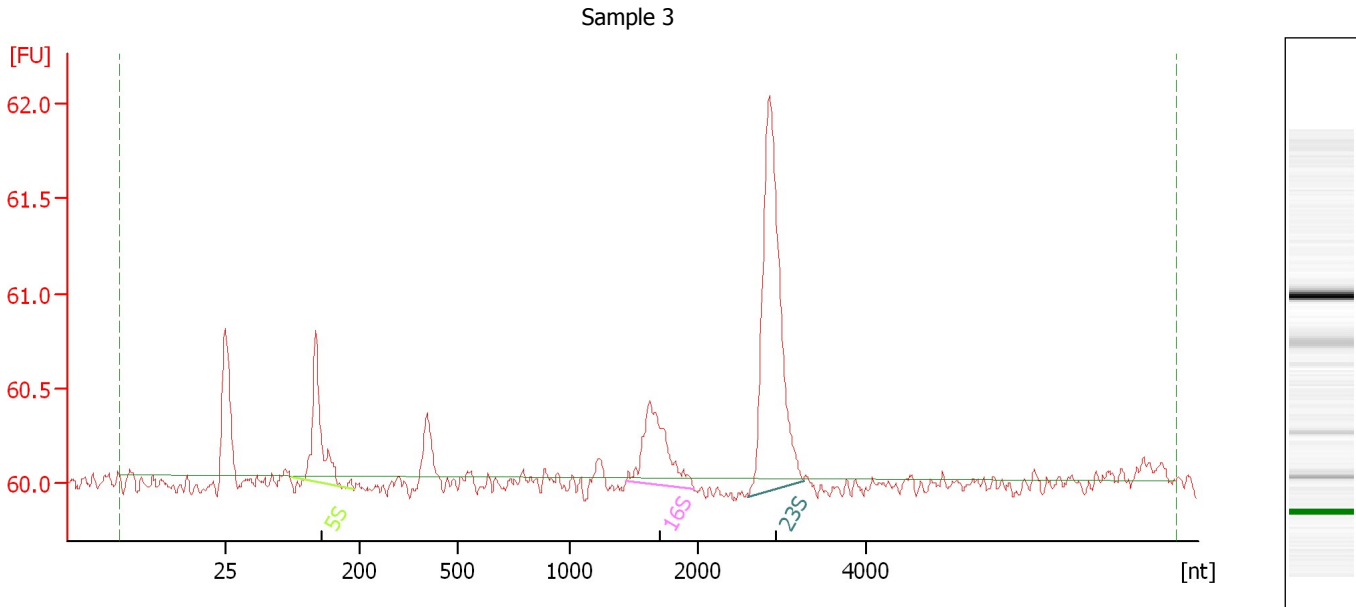
**Fragment table for sample 2 : Sample 2**

Name	Start Size [nt]	End Size [nt]	Area	% of total Area
5S	110	206	1.4	21.7
16S	1,482	2,248	1.5	23.3
23S	2,514	3,426	2.3	36.3

Assay Class: Prokaryote Total RNA Pico  
 Data Path: C:\... bioanalyzer\2100 expert\data\2016-12-08\2016-12-08\_002.xad

Created: 12/8/2016 4:36:29 PM  
 Modified: 12/9/2016 3:46:43 PM

**Electropherogram Summary Continued ...**



**Overall Results for sample 3 : Sample 3**

RNA Area:	6.7	RNA Integrity Number (RIN):	4.1 (B.02.08,
RNA Concentration:	79 pg/μl		Anomaly Threshold(s)
rRNA Ratio [23s / 16s]:	3.3		manually adapted)

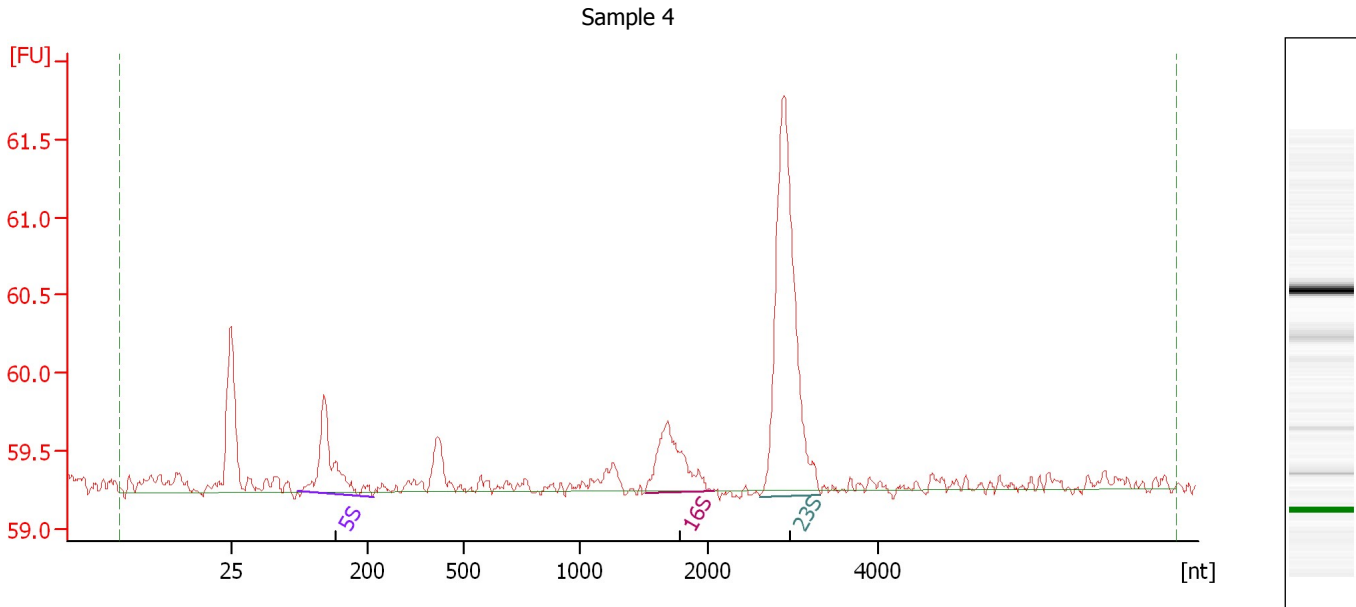
**Fragment table for sample 3 : Sample 3**

Name	Start Size [nt]	End Size [nt]	Area	% of total Area
5S	110	192	1.3	19.0
16S	1,441	1,978	1.2	17.5
23S	2,604	3,260	3.9	57.7

Assay Class: Prokaryote Total RNA Pico  
 Data Path: C:\... bioanalyzer\2100 expert\data\2016-12-08\2016-12-08\_002.xad

Created: 12/8/2016 4:36:29 PM  
 Modified: 12/9/2016 3:46:43 PM

**Electropherogram Summary Continued ...**



**Overall Results for sample 4 : Sample 4**

RNA Area:	11.5	RNA Integrity Number (RIN):	7.3 (B.02.08,
RNA Concentration:	136 µg/µl		Anomaly Threshold(s)
rRNA Ratio [23s / 16s]:	0.0		manually adapted)

**Fragment table for sample 4 : Sample 4**

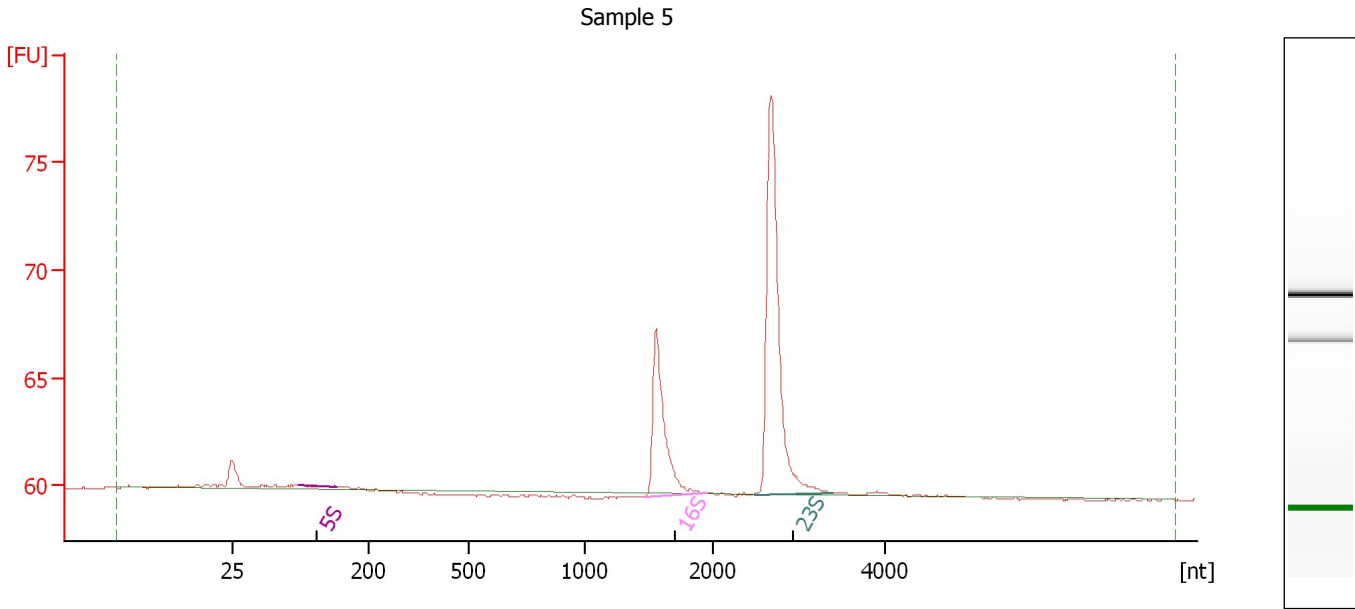
Name	Start Size [nt]	End Size [nt]	Area	% of total Area
5S	110	219	1.5	13.4
16S	1,515	2,087	1.3	11.6
23S	2,617	3,327	5.1	44.4



Assay Class: Prokaryote Total RNA Pico  
 Data Path: C:\... bioanalyzer\2100 expert\data\2016-12-08\2016-12-08\_002.xad

Created: 12/8/2016 4:36:29 PM  
 Modified: 12/9/2016 3:46:43 PM

**Electropherogram Summary Continued ...**



**Overall Results for sample 5 : Sample 5**

RNA Area:	40.2	RNA Integrity Number (RIN):	9.9 (B.02.08,
RNA Concentration:	475 µg/µl		Anomaly Threshold(s)
rRNA Ratio [23s / 16s]:	2.2		manually adapted)

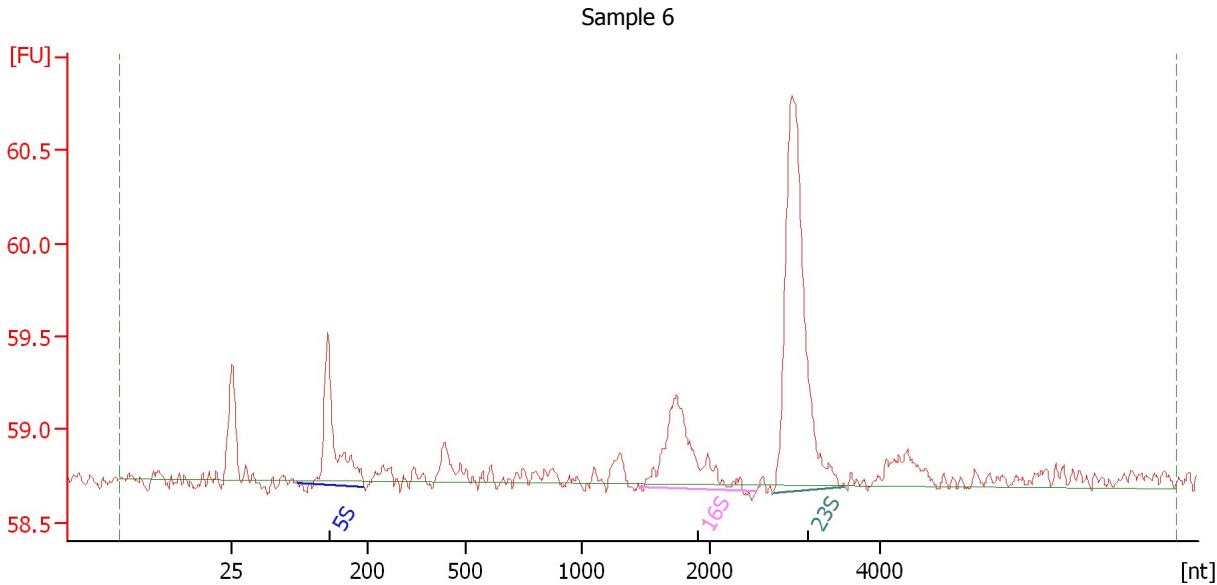
**Fragment table for sample 5 : Sample 5**

Name	Start Size [nt]	End Size [nt]	Area	% of total Area
5S	110	158	0.0	0.0
16S	1,469	1,947	10.7	26.7
23S	2,491	3,397	23.3	57.9

Assay Class: Prokaryote Total RNA Pico  
 Data Path: C:\... bioanalyzer\2100 expert\data\2016-12-08\2016-12-08\_002.xad

Created: 12/8/2016 4:36:29 PM  
 Modified: 12/9/2016 3:46:43 PM

**Electropherogram Summary Continued ...**



**Setpoint Deviations for sample 6 : Sample 6**

Slope Threshold :	0.06	Width Threshold [s] :	0.1
Height Threshold [FU] :	0.01	Baseline Plateau [s] :	1
Area Threshold :	0.1		

**Overall Results for sample 6 : Sample 6**

RNA Area:	9.8	RNA Integrity Number (RIN):	2.4 (B.02.08, Anomaly Threshold(s) manually adapted)
RNA Concentration:	116 pg/μl		
rRNA Ratio [23s / 16s]:	2.5		

**Fragment table for sample 6 : Sample 6**

Name	Start Size [nt]	End Size [nt]	Area	% of total Area
5S	110	195	1.6	16.4
16S	1,462	2,551	1.7	17.1
23S	2,753	3,579	4.3	43.2



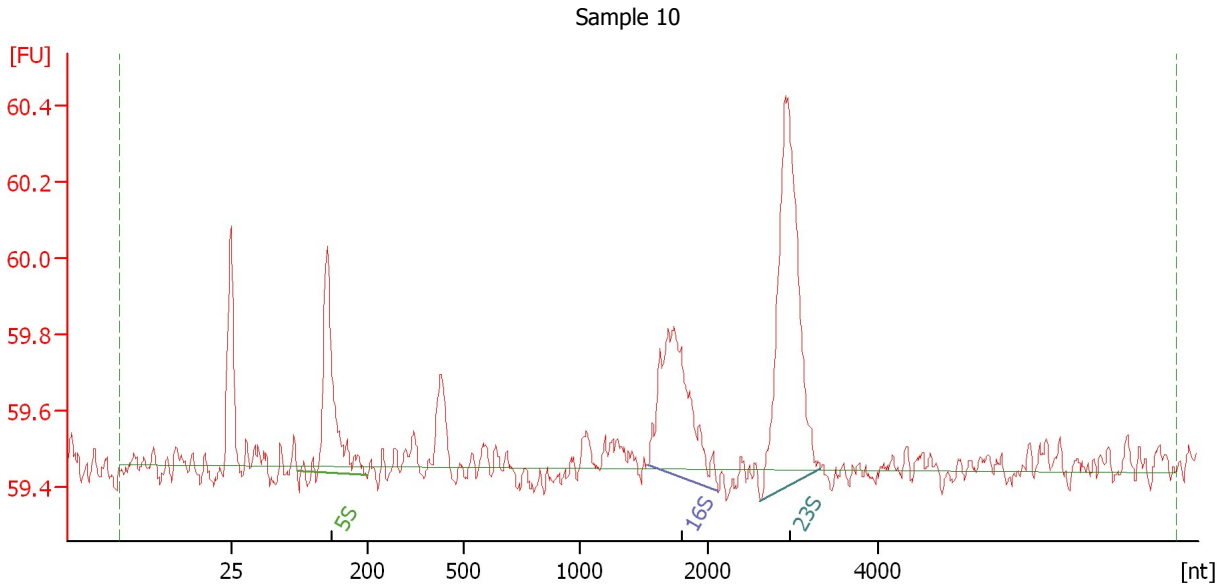




Assay Class: Prokaryote Total RNA Pico  
 Data Path: C:\... bioanalyzer\2100 expert\data\2016-12-08\2016-12-08\_002.xad

Created: 12/8/2016 4:36:29 PM  
 Modified: 12/9/2016 3:46:43 PM

**Electropherogram Summary Continued ...**



**Setpoint Deviations for sample 10 : Sample 10**

Height Threshold [FU] : 0.05                      Width Threshold [s] : 0.03  
 Area Threshold : 0.02

**Overall Results for sample 10 : Sample 10**

RNA Area: 6.2                      RNA Integrity Number (RIN): 2.8 (B.02.08,  
 RNA Concentration: 73 pg/μl                      Anomaly Threshold(s)  
 rRNA Ratio [23s / 16s]: 0.0                      manually adapted)

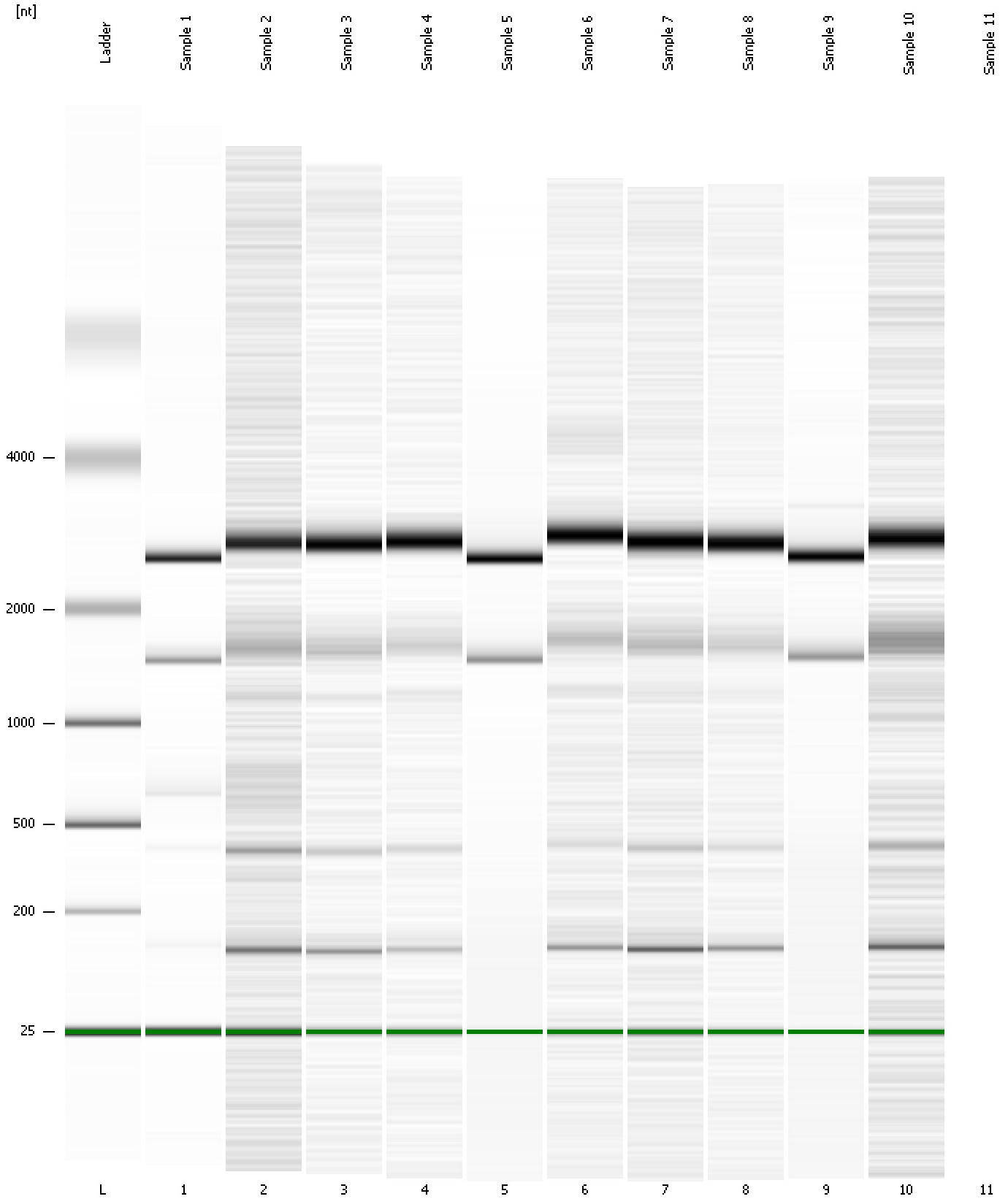
**Fragment table for sample 10 : Sample 10**

Name	Start Size [nt]	End Size [nt]	Area	% of total Area
5S	110	204	1.1	18.1
16S	1,536	2,127	1.4	22.9
23S	2,628	3,327	2.2	35.9

Assay Class: Prokaryote Total RNA Pico  
Data Path: C:\... bioanalyzer\2100 expert\data\2016-12-08\2016-12-08\_002.xad

Created: 12/8/2016 4:36:29 PM  
Modified: 12/9/2016 3:46:43 PM

**Gel Image**



---

Assay Class: Prokaryote Total RNA Pico  
Data Path: C:\... bioanalyzer\2100 expert\data\2016-12-08\2016-12-08\_002.xad

Created: 12/8/2016 4:36:29 PM  
Modified: 12/9/2016 3:46:43 PM

**Invalid Samples**

Sample 11 has not been run, no results available.



Assay Class: Prokaryote Total RNA Pico  
 Data Path: C:\... bioanalyzer\2100 expert\data\2016-12-08\2016-12-08\_002.xad

Created: 12/8/2016 4:36:29 PM  
 Modified: 12/9/2016 3:46:43 PM

**Run Logbook**

Description	Number	Source	Category	Sub Category	Time	Time Zone	User	Host
Run ended on port 1 (Number of wells acquired: 11)		Instrument	Run		12/8/2016 4:57:59 PM	(GMT --08:00) Pacific Standard Time	UC Davis	D8XSMGH1
Run started on port 1 (File: C:\Program Files\Agilent\2100 bioanalyzer\2100 expert\data\2016-12-08\2016-12-08_002.xad)		Instrument	Run		12/8/2016 4:36:35 PM	(GMT --08:00) Pacific Standard Time	UC Davis	D8XSMGH1
Product Number : G2938B		Instrument	Run		12/8/2016 4:36:35 PM	(GMT --08:00) Pacific Standard Time	UC Davis	D8XSMGH1
Name :		Instrument	Run		12/8/2016 4:36:35 PM	(GMT --08:00) Pacific Standard Time	UC Davis	D8XSMGH1
Vendor : Agilent Technologies		Instrument	Run		12/8/2016 4:36:35 PM	(GMT --08:00) Pacific Standard Time	UC Davis	D8XSMGH1
Serial# : DE13701086		Instrument	Run		12/8/2016 4:36:35 PM	(GMT --08:00) Pacific Standard Time	UC Davis	D8XSMGH1
Firmware : C.01.069		Instrument	Run		12/8/2016 4:36:35 PM	(GMT --08:00) Pacific Standard Time	UC Davis	D8XSMGH1
Cartridge : Electrode		Instrument	Run		12/8/2016 4:36:35 PM	(GMT --08:00) Pacific Standard Time	UC Davis	D8XSMGH1