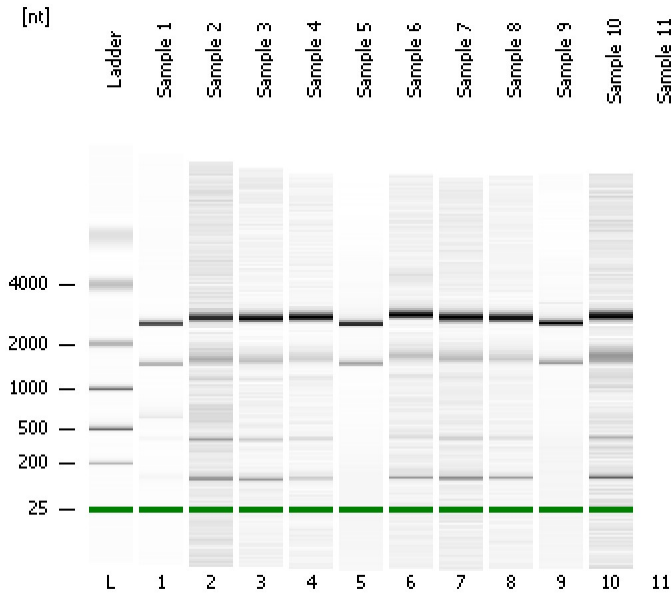


Assay Class: Prokaryote Total RNA Pico
Data Path: C:\... bioanalyzer\2100 expert\data\2016-12-08\2016-12-08_002.xad

Created: 12/8/2016 4:36:29 PM
Modified: 12/9/2016 4:34:03 PM

Electrophoresis File Run Summary



Instrument Information:

Instrument Name: DE13701086 Firmware: C.01.069
Serial#: DE13701086 Type: G2938B

Assay Information:

Assay Origin Path: C:\Program Files\Agilent\2100 bioanalyzer\2100 expert\assays\RNA\Prokaryote Total RNA Pico Series II.xsy

Assay Class: Prokaryote Total RNA Pico
Version: 2.5
Assay Comments: Total RNA Analysis pg sensitivity (Prokaryote)

© Copyright 2003 - 2009 Agilent Technologies, Inc.

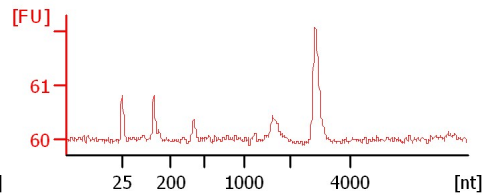
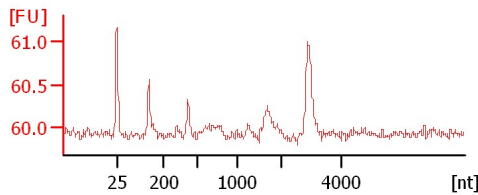
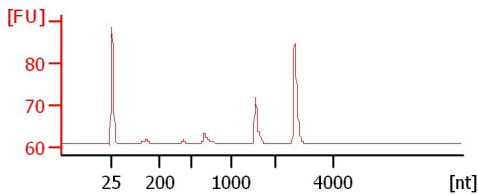
Chip Information:

Chip Lot #:
Reagent Kit Lot #:
Chip Comments:

Sample 1

Sample 2

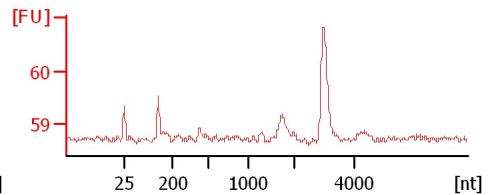
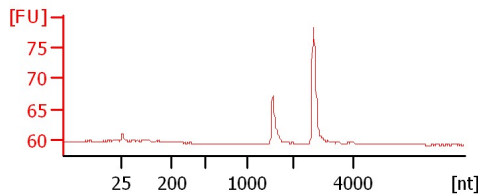
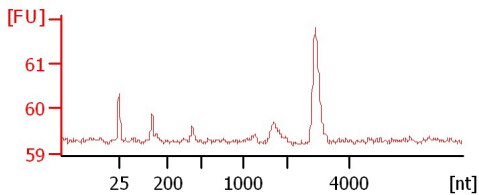
Sample 3



Sample 4

Sample 5

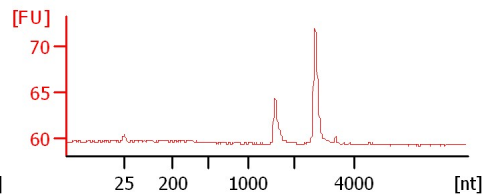
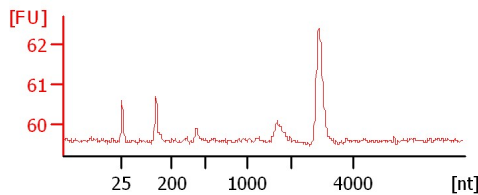
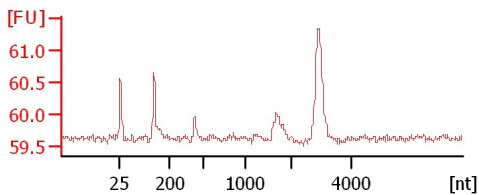
Sample 6



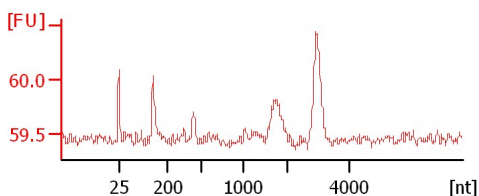
Sample 7

Sample 8

Sample 9



Sample 10



Assay Class: Prokaryote Total RNA Pico
Data Path: C:\... bioanalyzer\2100 expert\data\2016-12-08\2016-12-08_002.xad

Created: 12/8/2016 4:36:29 PM
Modified: 12/9/2016 4:34:03 PM

Electrophoresis File Run Summary (Chip Summary)

Sample Name	Sample Comment	Status	Result Label	Result Color
Sample 1		✓		
Sample 2		✓		
Sample 3		✓		
Sample 4		✓		
Sample 5		✓		
Sample 6		✓		
Sample 7		✓		
Sample 8		✓		
Sample 9		✓		
Sample 10		✓		
Sample 11		✓		
Ladder		✓		

Chip Lot #

Reagent Kit Lot #

Chip Comments :

Assay Class: Prokaryote Total RNA Pico
Data Path: C:\... bioanalyzer\2100 expert\data\2016-12-08\2016-12-08_002.xad

Created: 12/8/2016 4:36:29 PM
Modified: 12/9/2016 4:34:03 PM

Electrophoresis Assay Details

General Analysis Settings

Number of Available Sample and Ladder Wells (Max.) : 12
Minimum Visible Range [s] : 17
Maximum Visible Range [s] : 70
Start Analysis Time Range [s] : 18
End Analysis Time Range [s] : 69
Ladder Concentration [pg/ μ l] : 1000
Lower Marker Concentration [pg/ μ l] : 0
Upper Marker Concentration [pg/ μ l] : 0
Used Lower Marker for Quantitation
Standard Curve Fit is Logarithmic
Show Data Aligned to Lower Marker

Integrator Settings

Integration Start Time [s] : 18
Integration End Time [s] : 69
Slope Threshold : 0.6
Height Threshold [FU] : 0.5
Area Threshold : 0.2
Width Threshold [s] : 0.3
Baseline Plateau [s] : 6

Filter Settings

Filter Width [s] : 0.5
Polynomial Order : 4

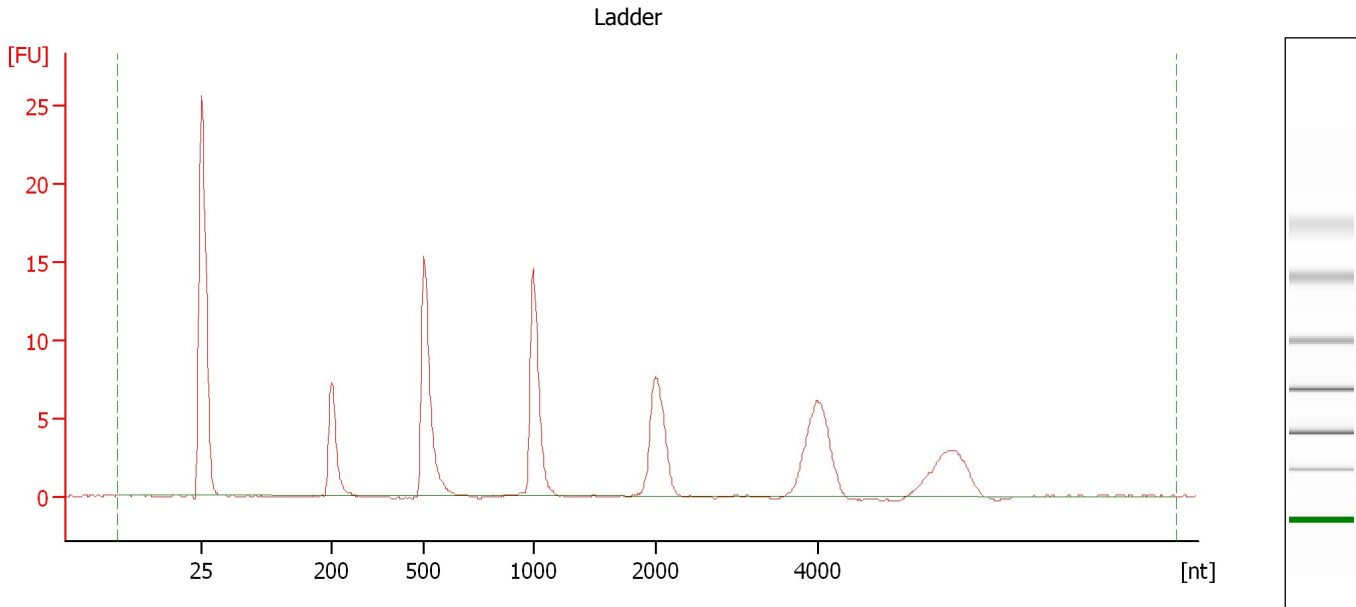
Ladder

Ladder Peak	Size
1	25
2	200
3	500
4	1000
5	2000
6	4000

Assay Class: Prokaryote Total RNA Pico
Data Path: C:\... bioanalyzer\2100 expert\data\2016-12-08\2016-12-08_002.xad

Created: 12/8/2016 4:36:29 PM
Modified: 12/9/2016 4:34:03 PM

Electropherogram Summary



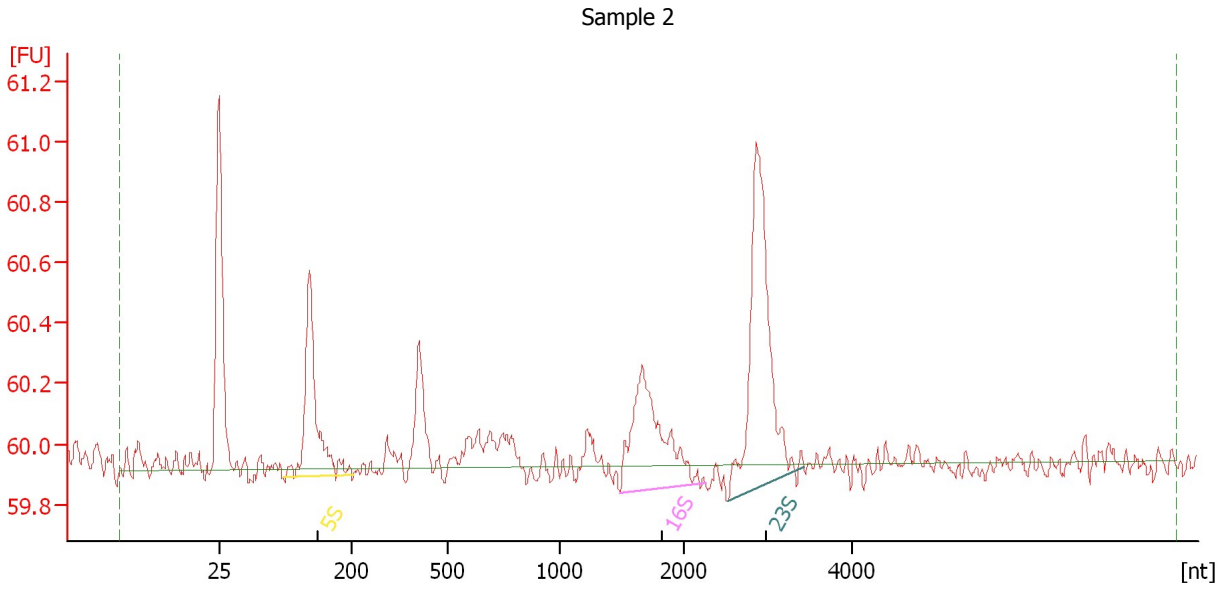
Overall Results for Ladder

RNA Area: 84.8 RNA Concentration: 1,000 pg/μl

Assay Class: Prokaryote Total RNA Pico
 Data Path: C:\... bioanalyzer\2100 expert\data\2016-12-08\2016-12-08_002.xad

Created: 12/8/2016 4:36:29 PM
 Modified: 12/9/2016 4:34:03 PM

Electropherogram Summary Continued ...



Setpoint Deviations for sample 2 : Sample 2

Height Threshold [FU] : 0.2 Baseline Plateau [s] : 0.2

Overall Results for sample 2 : Sample 2

RNA Area: 6.5 RNA Integrity Number (RIN): 4.6 (B.02.08,
 RNA Concentration: 76 pg/μl Anomaly Threshold(s)
 rRNA Ratio [23s / 16s]: 1.6 manually adapted)

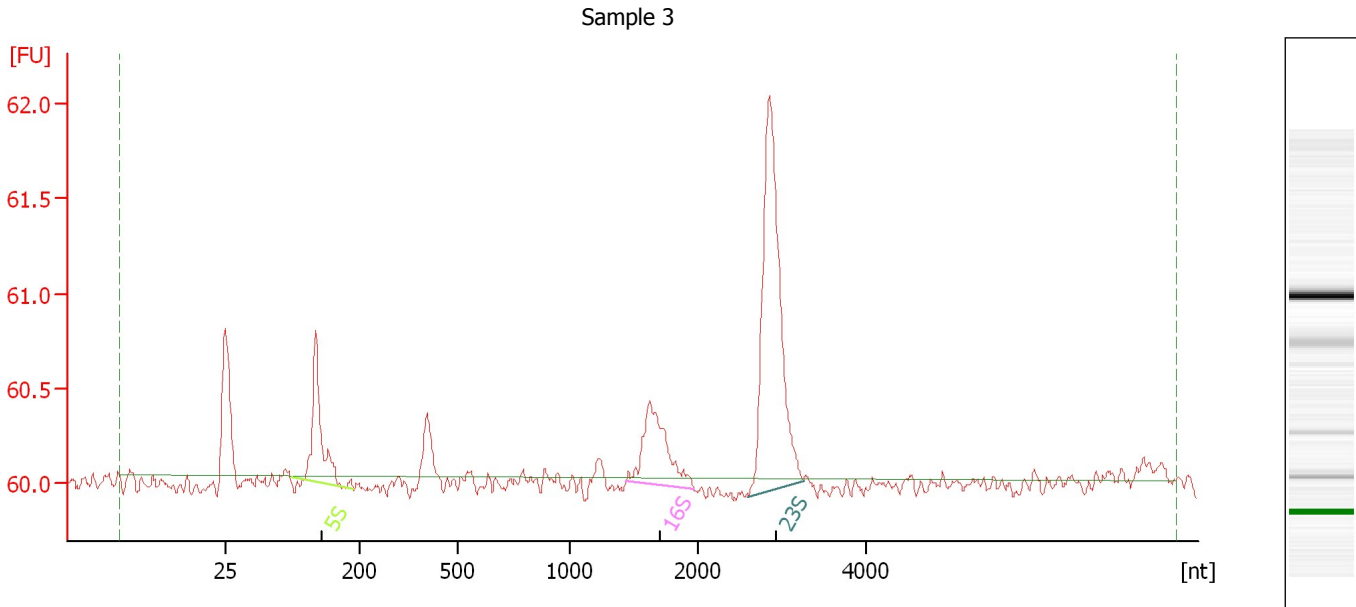
Fragment table for sample 2 : Sample 2

Name	Start Size [nt]	End Size [nt]	Area	% of total Area
5S	110	206	1.4	21.7
16S	1,482	2,248	1.5	23.3
23S	2,514	3,426	2.3	36.3

Assay Class: Prokaryote Total RNA Pico
 Data Path: C:\... bioanalyzer\2100 expert\data\2016-12-08\2016-12-08_002.xad

Created: 12/8/2016 4:36:29 PM
 Modified: 12/9/2016 4:34:03 PM

Electropherogram Summary Continued ...



Overall Results for sample 3 : Sample 3

RNA Area:	6.7	RNA Integrity Number (RIN):	4.1 (B.02.08,
RNA Concentration:	79 pg/μl		Anomaly Threshold(s)
rRNA Ratio [23s / 16s]:	3.3		manually adapted)

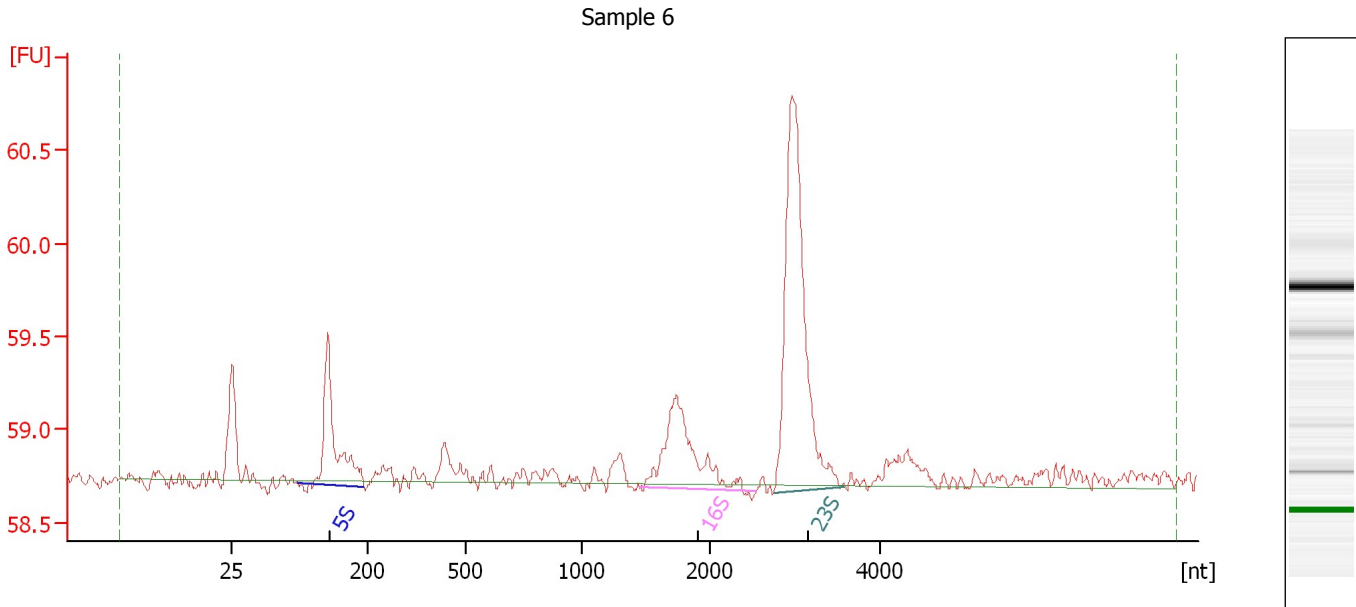
Fragment table for sample 3 : Sample 3

Name	Start Size [nt]	End Size [nt]	Area	% of total Area
5S	110	192	1.3	19.0
16S	1,441	1,978	1.2	17.5
23S	2,604	3,260	3.9	57.7

Assay Class: Prokaryote Total RNA Pico
 Data Path: C:\... bioanalyzer\2100 expert\data\2016-12-08\2016-12-08_002.xad

Created: 12/8/2016 4:36:29 PM
 Modified: 12/9/2016 4:34:03 PM

Electropherogram Summary Continued ...



Setpoint Deviations for sample 6 : Sample 6

Slope Threshold :	0.06	Width Threshold [s] :	0.1
Height Threshold [FU] :	0.01	Baseline Plateau [s] :	1
Area Threshold :	0.1		

Overall Results for sample 6 : Sample 6

RNA Area:	9.8	RNA Integrity Number (RIN):	2.4 (B.02.08, Anomaly Threshold(s) manually adapted)
RNA Concentration:	116 pg/μl		
rRNA Ratio [23s / 16s]:	2.5		

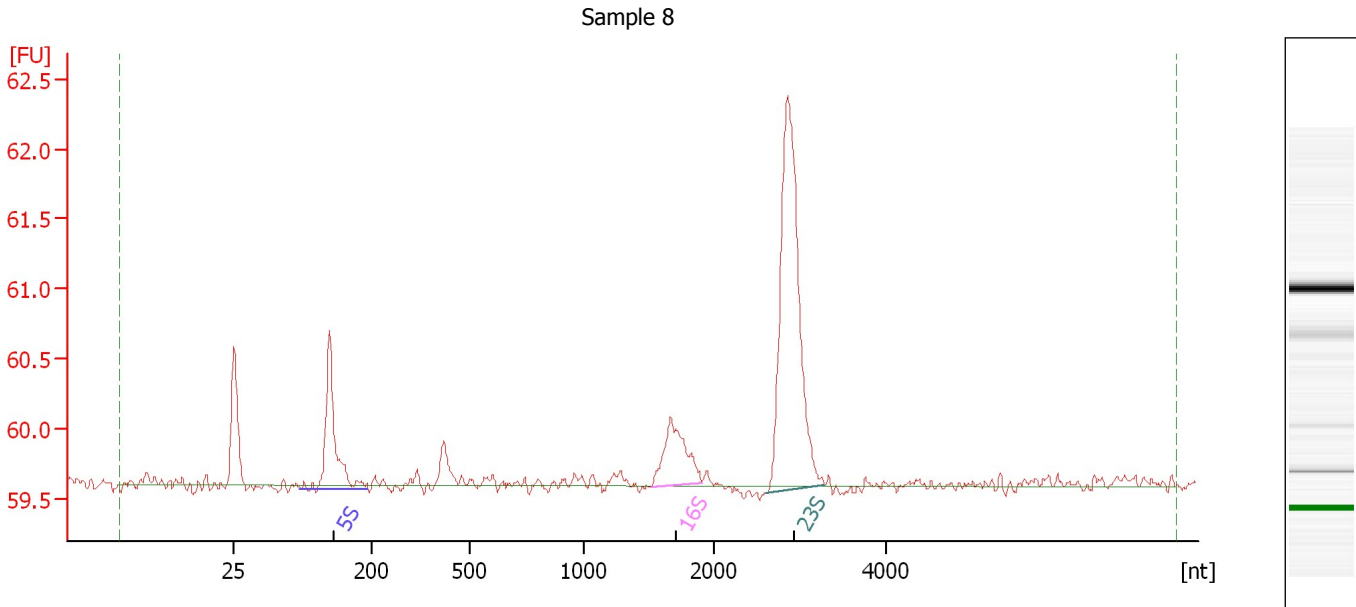
Fragment table for sample 6 : Sample 6

Name	Start Size [nt]	End Size [nt]	Area	% of total Area
5S	110	195	1.6	16.4
16S	1,462	2,551	1.7	17.1
23S	2,753	3,579	4.3	43.2

Assay Class: Prokaryote Total RNA Pico
 Data Path: C:\... bioanalyzer\2100 expert\data\2016-12-08\2016-12-08_002.xad

Created: 12/8/2016 4:36:29 PM
 Modified: 12/9/2016 4:34:03 PM

Electropherogram Summary Continued ...



Overall Results for sample 8 : Sample 8

RNA Area:	10.4	RNA Integrity Number (RIN):	4.6 (B.02.08,
RNA Concentration:	123 µg/µl		Anomaly Threshold(s)
rRNA Ratio [23s / 16s]:	4.5		manually adapted)

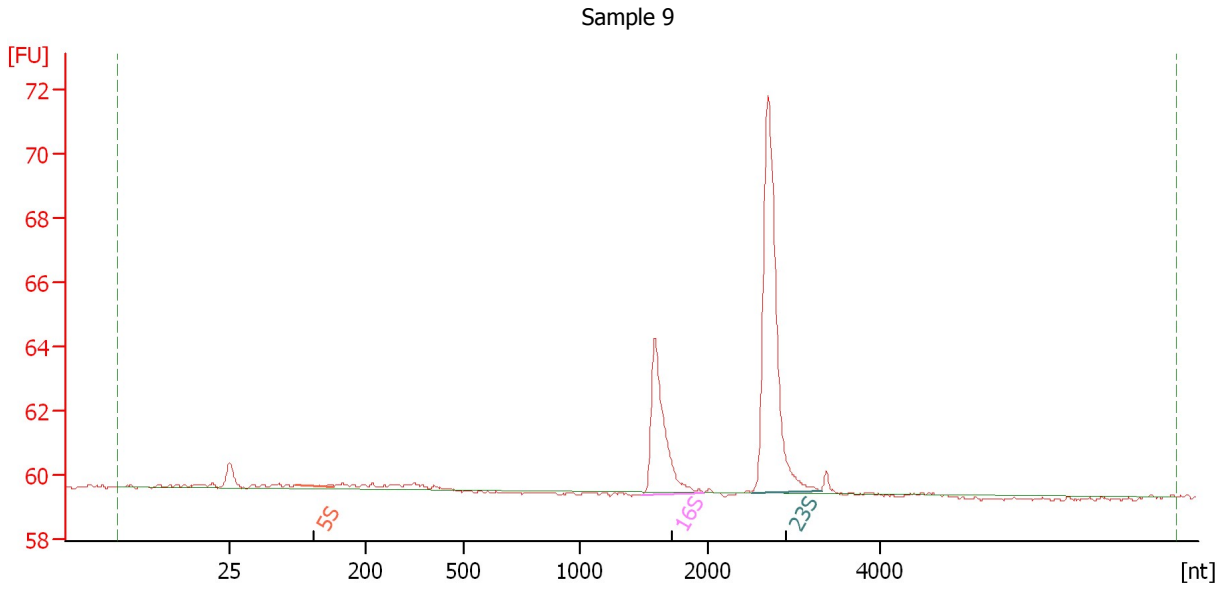
Fragment table for sample 8 : Sample 8

Name	Start Size [nt]	End Size [nt]	Area	% of total Area
5S	110	196	1.8	17.5
16S	1,524	1,905	1.2	11.5
23S	2,604	3,299	5.4	52.1

Assay Class: Prokaryote Total RNA Pico
 Data Path: C:\... bioanalyzer\2100 expert\data\2016-12-08\2016-12-08_002.xad

Created: 12/8/2016 4:36:29 PM
 Modified: 12/9/2016 4:34:03 PM

Electropherogram Summary Continued ...



Overall Results for sample 9 : Sample 9

RNA Area:	29.1	RNA Integrity Number (RIN):	9.5 (B.02.08,
RNA Concentration:	344 µg/µl		Anomaly Threshold(s)
rRNA Ratio [23s / 16s]:	2.2		manually adapted)

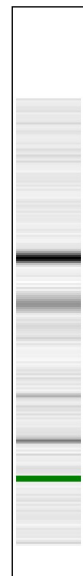
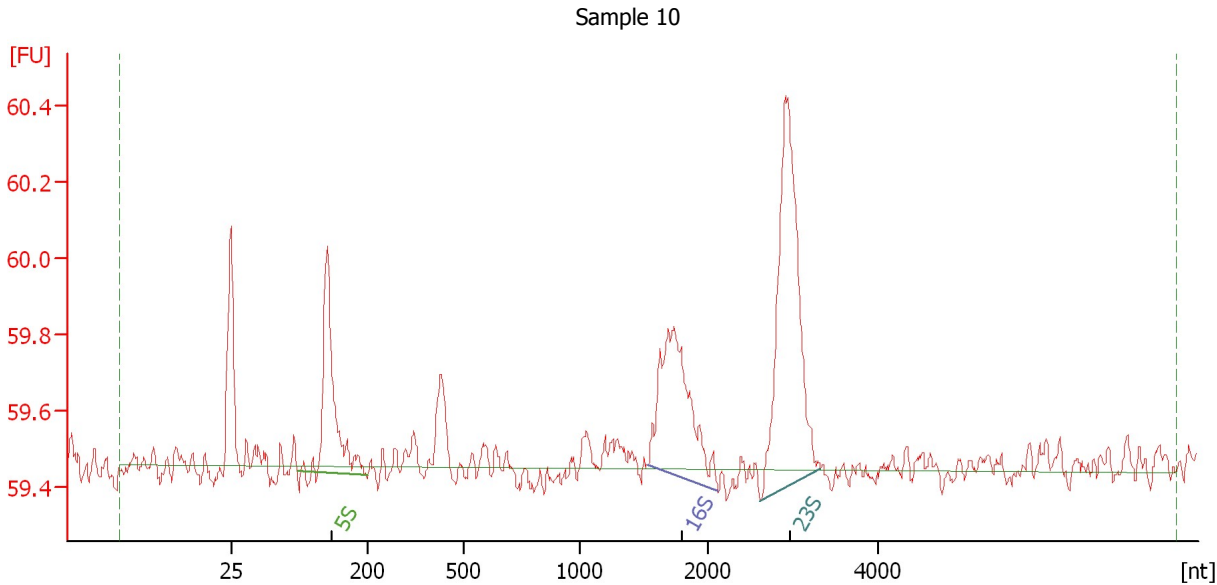
Fragment table for sample 9 : Sample 9

Name	Start Size [nt]	End Size [nt]	Area	% of total Area
5S	110	158	0.0	0.1
16S	1,488	1,962	7.8	26.7
23S	2,504	3,314	17.2	59.1

Assay Class: Prokaryote Total RNA Pico
 Data Path: C:\... bioanalyzer\2100 expert\data\2016-12-08\2016-12-08_002.xad

Created: 12/8/2016 4:36:29 PM
 Modified: 12/9/2016 4:34:03 PM

Electropherogram Summary Continued ...



Setpoint Deviations for sample 10 : Sample 10

Height Threshold [FU] : 0.05 Width Threshold [s] : 0.03
 Area Threshold : 0.02

Overall Results for sample 10 : Sample 10

RNA Area: 6.2 RNA Integrity Number (RIN): 2.8 (B.02.08,
 RNA Concentration: 73 pg/μl Anomaly Threshold(s)
 rRNA Ratio [23s / 16s]: 0.0 manually adapted)

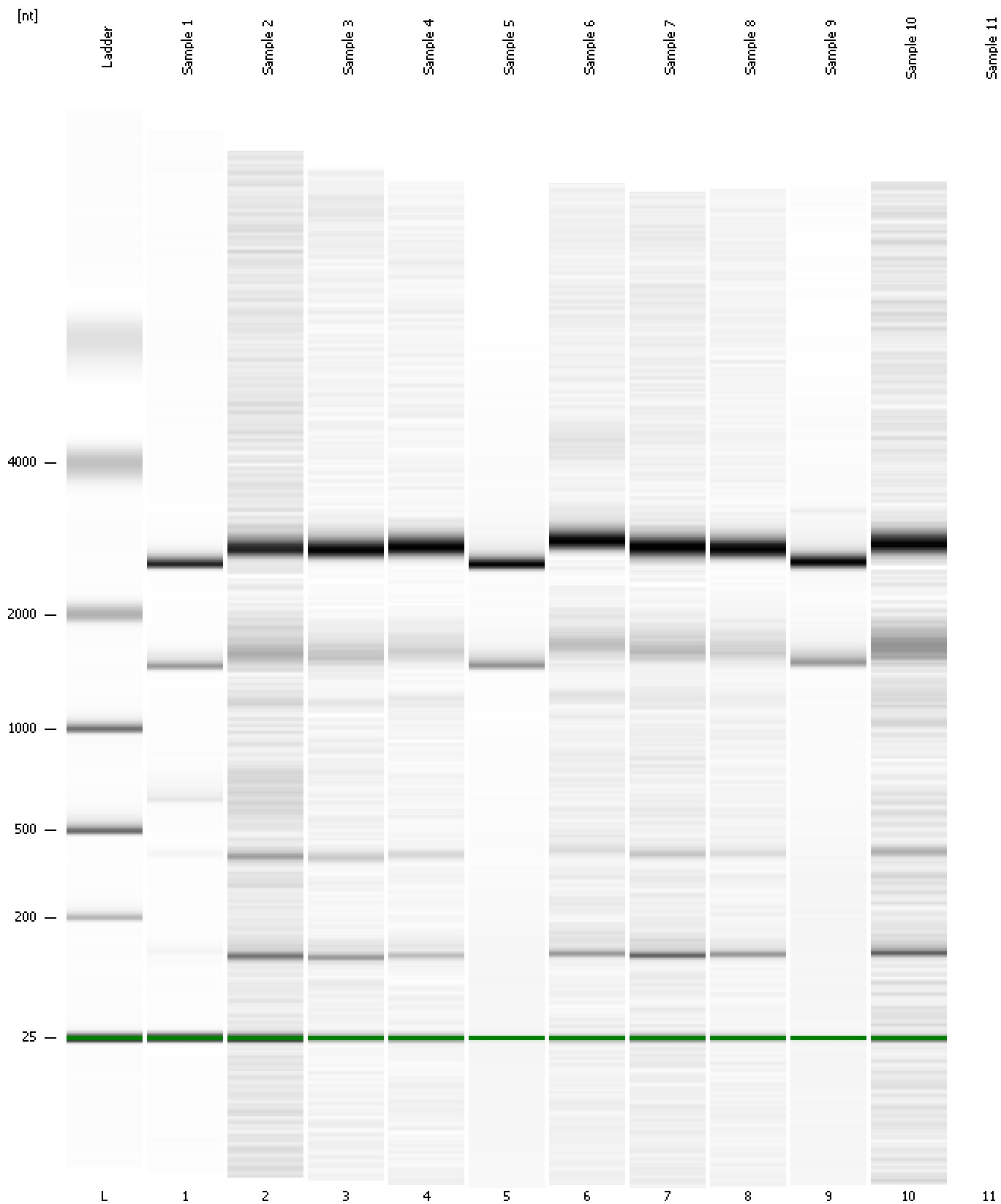
Fragment table for sample 10 : Sample 10

Name	Start Size [nt]	End Size [nt]	Area	% of total Area
5S	110	204	1.1	18.1
16S	1,536	2,127	1.4	22.9
23S	2,628	3,327	2.2	35.9

Assay Class: Prokaryote Total RNA Pico
Data Path: C:\... bioanalyzer\2100 expert\data\2016-12-08\2016-12-08_002.xad

Created: 12/8/2016 4:36:29 PM
Modified: 12/9/2016 4:34:03 PM

Gel Image



Assay Class: Prokaryote Total RNA Pico
Data Path: C:\... bioanalyzer\2100 expert\data\2016-12-08\2016-12-08_002.xad

Created: 12/8/2016 4:36:29 PM
Modified: 12/9/2016 4:34:03 PM

Invalid Samples

Sample 11 has not been run, no results available.

Assay Class: Prokaryote Total RNA Pico
 Data Path: C:\... bioanalyzer\2100 expert\data\2016-12-08\2016-12-08_002.xad

Created: 12/8/2016 4:36:29 PM
 Modified: 12/9/2016 4:34:03 PM

Run Logbook

Description	Number	Source	Category	Sub Category	Time	Time Zone	User	Host
Run ended on port 1 (Number of wells acquired: 11)		Instrument	Run		12/8/2016 4:57:59 PM	(GMT --08:00) Pacific Standard Time	UC Davis	D8XSMGH1
Run started on port 1 (File: C:\Program Files\Agilent\2100 bioanalyzer\2100 expert\data\2016-12-08\2016-12-08_002.xad)		Instrument	Run		12/8/2016 4:36:35 PM	(GMT --08:00) Pacific Standard Time	UC Davis	D8XSMGH1
Product Number : G2938B		Instrument	Run		12/8/2016 4:36:35 PM	(GMT --08:00) Pacific Standard Time	UC Davis	D8XSMGH1
Name :		Instrument	Run		12/8/2016 4:36:35 PM	(GMT --08:00) Pacific Standard Time	UC Davis	D8XSMGH1
Vendor : Agilent Technologies		Instrument	Run		12/8/2016 4:36:35 PM	(GMT --08:00) Pacific Standard Time	UC Davis	D8XSMGH1
Serial# : DE13701086		Instrument	Run		12/8/2016 4:36:35 PM	(GMT --08:00) Pacific Standard Time	UC Davis	D8XSMGH1
Firmware : C.01.069		Instrument	Run		12/8/2016 4:36:35 PM	(GMT --08:00) Pacific Standard Time	UC Davis	D8XSMGH1
Cartridge : Electrode		Instrument	Run		12/8/2016 4:36:35 PM	(GMT --08:00) Pacific Standard Time	UC Davis	D8XSMGH1