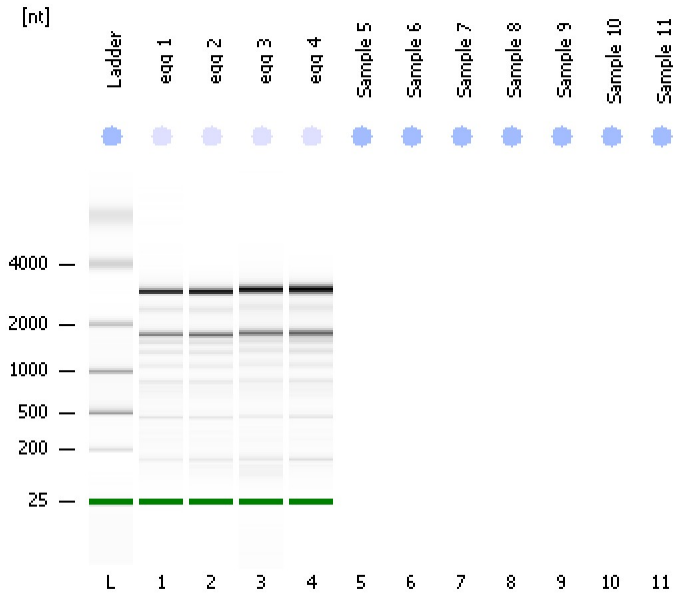


Assay Class: Eukaryote Total RNA Pico
Data Path: C:\... bioanalyzer\2100 expert\data\2016-12-13\2016-12-13_003.xad

Created: 12/13/2016 12:06:39 PM
Modified: 12/13/2016 12:19:40 PM

Electrophoresis File Run Summary



Instrument Information:

Instrument Name: DE13701086 Firmware: C.01.069
Serial#: DE13701086 Type: G2938B

Assay Information:

Assay Origin Path: C:\Program Files\Agilent\2100 bioanalyzer\2100 expert\assays\RNA\Eukaryote Total RNA Pico Series II.xsy

Assay Class: Eukaryote Total RNA Pico

Version: 2.6

Assay Comments: Total RNA Analysis pg sensitivity (Eukaryote)

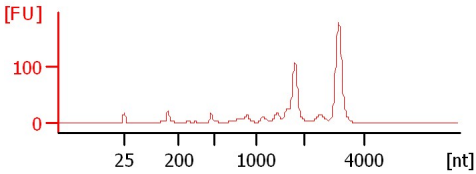
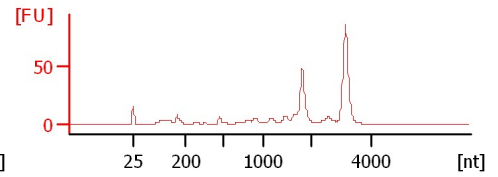
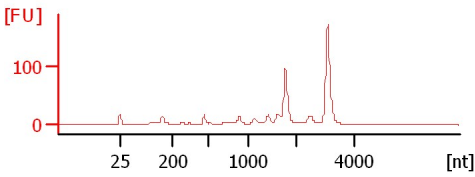
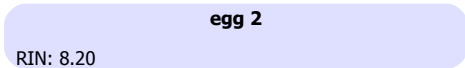
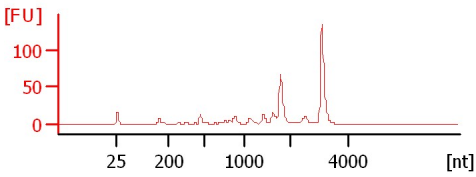
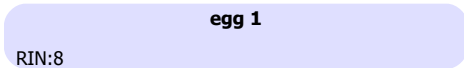
© Copyright 2003 - 2009 Agilent Technologies, Inc.

Chip Information:

Chip Lot #:

Reagent Kit Lot #:

Chip Comments:



Assay Class: Eukaryote Total RNA Pico
Data Path: C:\... bioanalyzer\2100 expert\data\2016-12-13\2016-12-13_003.xad

Created: 12/13/2016 12:06:39 PM
Modified: 12/13/2016 12:19:40 PM

Electrophoresis File Run Summary (Chip Summary)

Sample Name	Sample Comment	Status	Result Label	Result Color
egg 1		✓	RIN:8	
egg 2		✓	RIN: 8.20	
egg 3		✓	RIN: 8.40	
egg 4		✓	RIN: 8.70	
Sample 5				
Sample 6				
Sample 7				
Sample 8				
Sample 9				
Sample 10				
Sample 11				
Ladder		✓	All Other Samples	

Chip Lot #

Reagent Kit Lot #

Chip Comments :

Assay Class: Eukaryote Total RNA Pico
Data Path: C:\... bioanalyzer\2100 expert\data\2016-12-13\2016-12-13_003.xad

Created: 12/13/2016 12:06:39 PM
Modified: 12/13/2016 12:19:40 PM

Electrophoresis Assay Details

General Analysis Settings

Number of Available Sample and Ladder Wells (Max.) : 12

Minimum Visible Range [s] : 17

Maximum Visible Range [s] : 70

Start Analysis Time Range [s] : 18

End Analysis Time Range [s] : 69

Ladder Concentration [pg/ μ l] : 1000

Lower Marker Concentration [pg/ μ l] : 0

Upper Marker Concentration [pg/ μ l] : 0

Used Lower Marker for Quantitation

Standard Curve Fit is Logarithmic

Show Data Aligned to Lower Marker

Integrator Settings

Integration Start Time [s] : 18

Integration End Time [s] : 69

Slope Threshold : 0.6

Height Threshold [FU] : 0.5

Area Threshold : 0.2

Width Threshold [s] : 0.3

Baseline Plateau [s] : 6

Filter Settings

Filter Width [s] : 0.5

Polynomial Order : 4

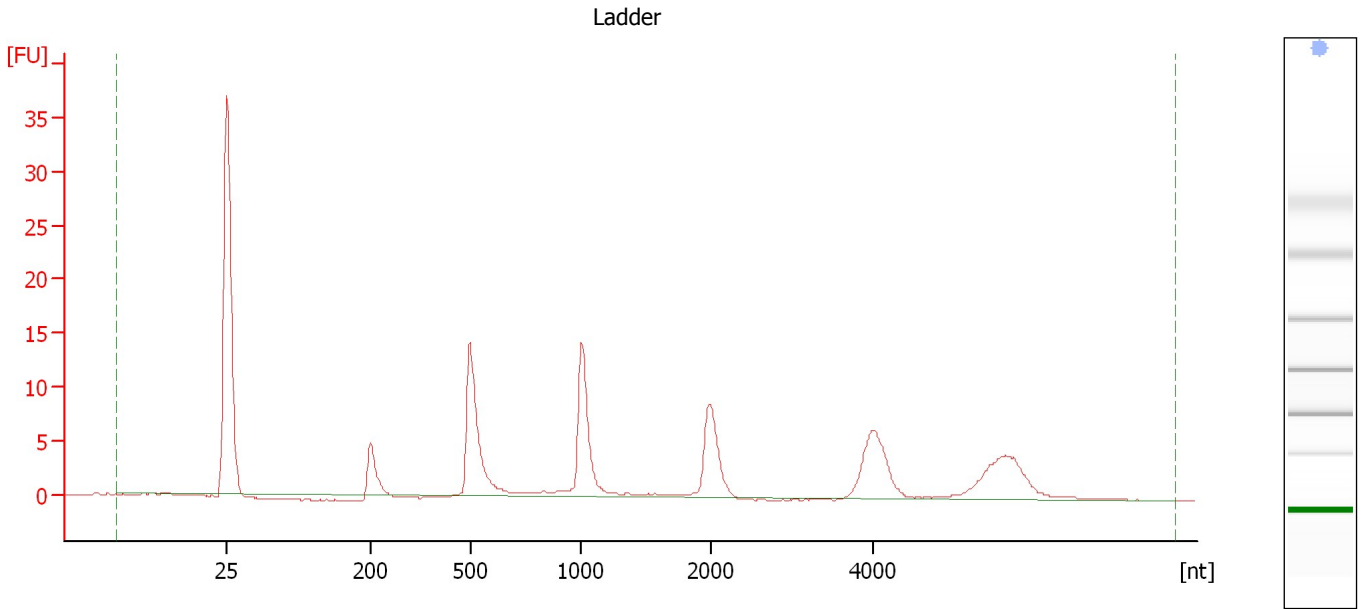
Ladder

Ladder Peak	Size
1	25
2	200
3	500
4	1000
5	2000
6	4000

Assay Class: Eukaryote Total RNA Pico
Data Path: C:\... bioanalyzer\2100 expert\data\2016-12-13\2016-12-13_003.xad

Created: 12/13/2016 12:06:39 PM
Modified: 12/13/2016 12:19:40 PM

Electropherogram Summary



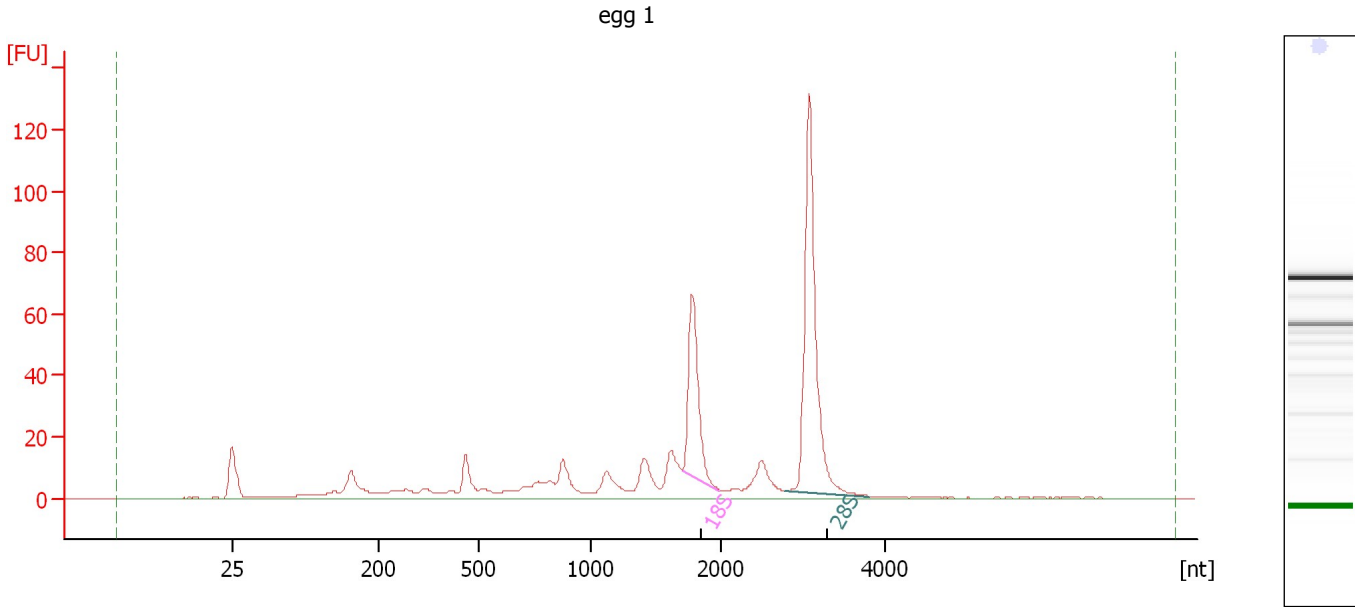
Overall Results for Ladder

RNA Area:	102.3	Result Flagging Color:	
RNA Concentration:	1,000 pg/μl	Result Flagging Label:	All Other Samples

Assay Class: Eukaryote Total RNA Pico
Data Path: C:\... bioanalyzer\2100 expert\data\2016-12-13\2016-12-13_003.xad

Created: 12/13/2016 12:06:39 PM
Modified: 12/13/2016 12:19:40 PM

Electropherogram Summary Continued ...



Overall Results for sample 1 : egg 1

RNA Area:	487.8	RNA Integrity Number (RIN):	8 (B.02.08)
RNA Concentration:	4,769 pg/μl	Result Flagging Color:	
rRNA Ratio [28s / 18s]:	2.2	Result Flagging Label:	RIN:8

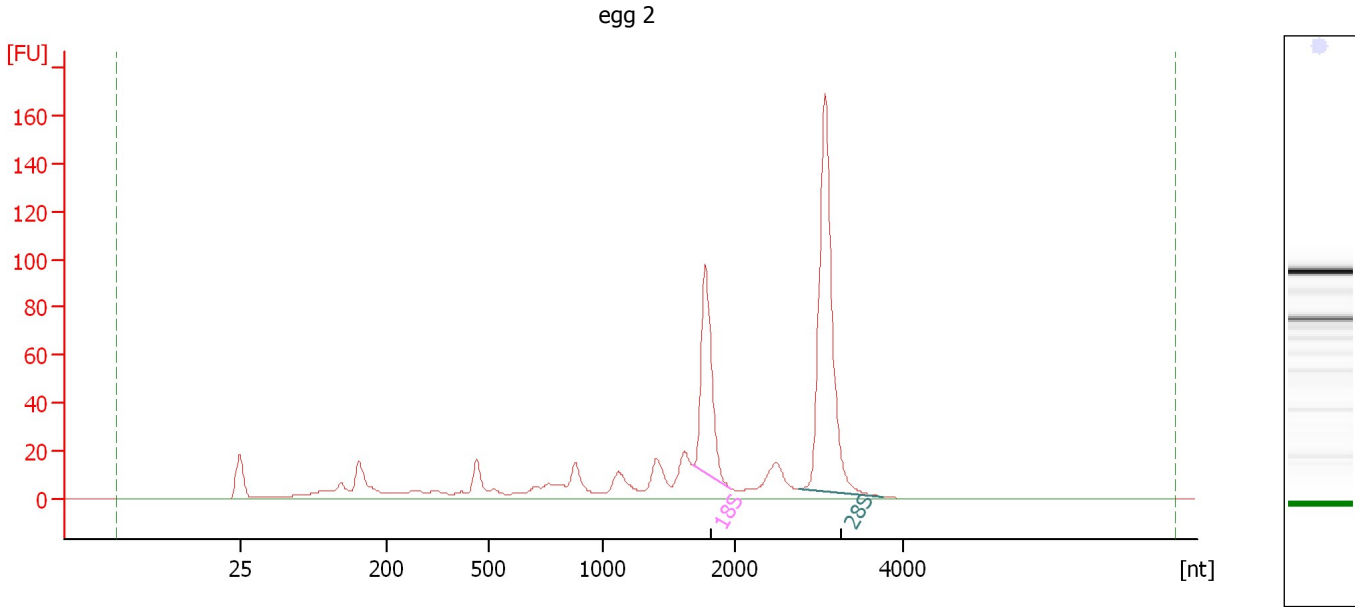
Fragment table for sample 1 : egg 1

Name	Start Size [nt]	End Size [nt]	Area	% of total Area
18S	1,706	1,995	65.2	13.4
28S	2,794	3,804	144.1	29.5

Assay Class: Eukaryote Total RNA Pico
 Data Path: C:\... bioanalyzer\2100 expert\data\2016-12-13\2016-12-13_003.xad

Created: 12/13/2016 12:06:39 PM
 Modified: 12/13/2016 12:19:40 PM

Electropherogram Summary Continued ...



Overall Results for sample 2 : egg 2

RNA Area:	691.7	RNA Integrity Number (RIN):	8.2 (B.02.08)
RNA Concentration:	6,762 pg/μl	Result Flagging Color:	
rRNA Ratio [28s / 18s]:	2.1	Result Flagging Label:	RIN: 8.20

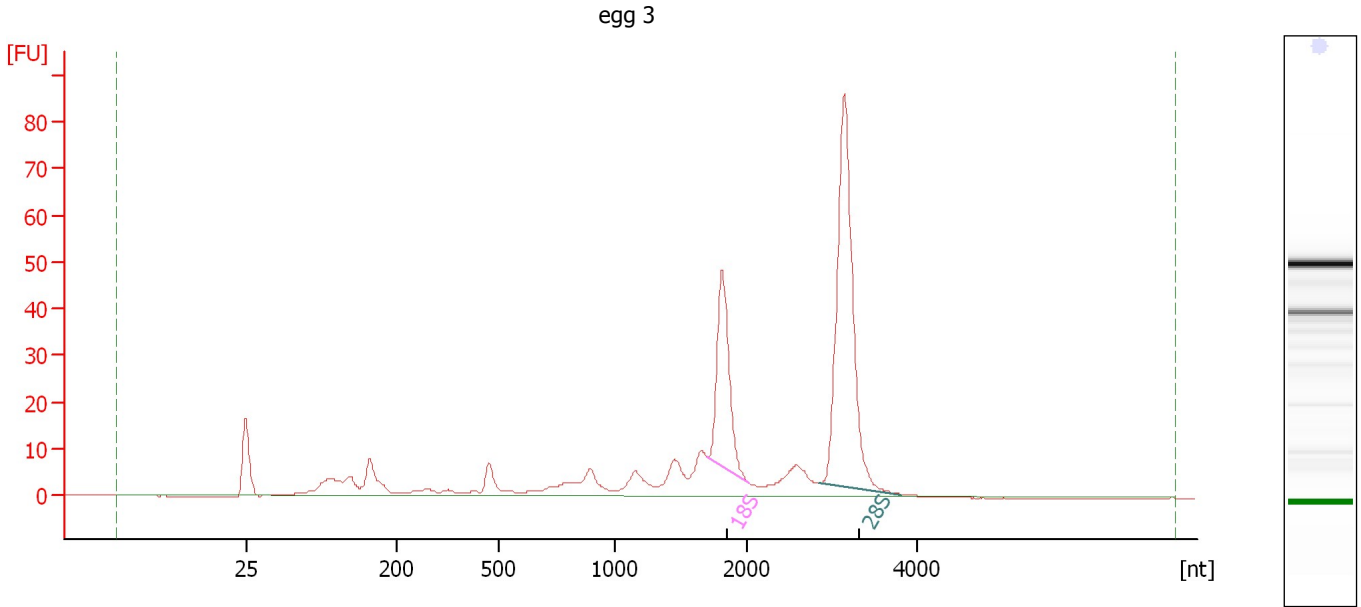
Fragment table for sample 2 : egg 2

Name	Start Size [nt]	End Size [nt]	Area	% of total Area
18S	1,682	1,975	103.3	14.9
28S	2,778	3,773	218.4	31.6

Assay Class: Eukaryote Total RNA Pico
Data Path: C:\... bioanalyzer\2100 expert\data\2016-12-13\2016-12-13_003.xad

Created: 12/13/2016 12:06:39 PM
Modified: 12/13/2016 12:19:40 PM

Electropherogram Summary Continued ...



Overall Results for sample 3 : egg 3

RNA Area:	381.9	RNA Integrity Number (RIN):	8.4 (B.02.08)
RNA Concentration:	3,733 µg/µl	Result Flagging Color:	
rRNA Ratio [28s / 18s]:	2.3	Result Flagging Label:	RIN: 8.40

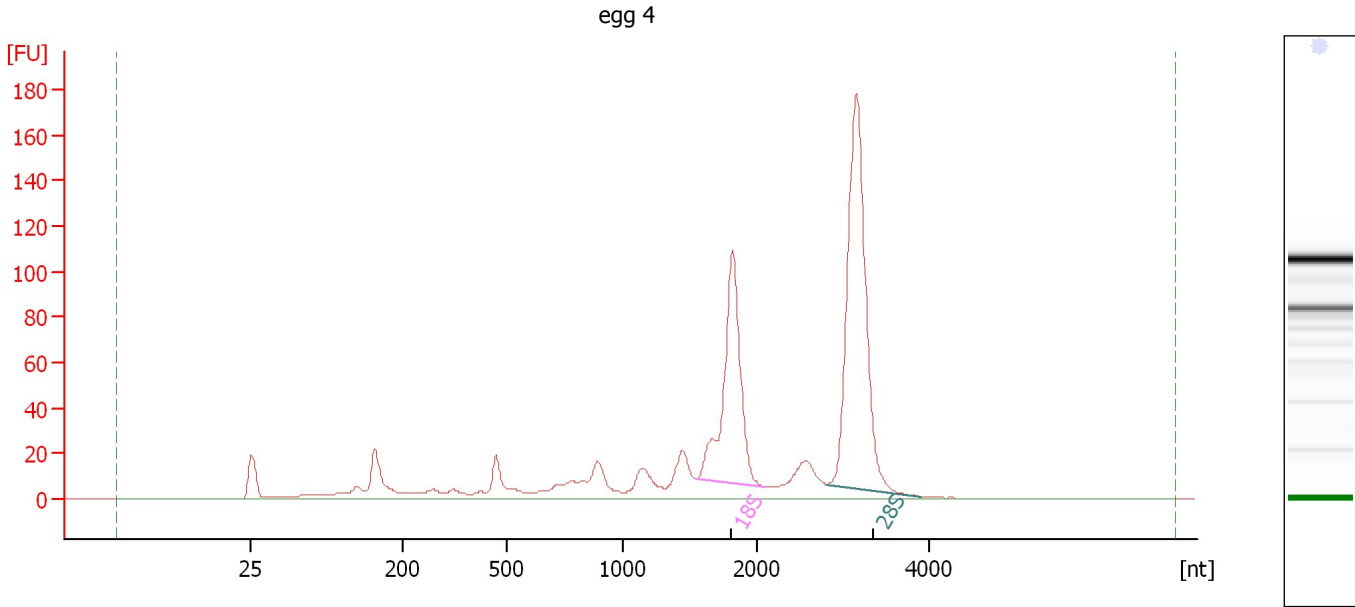
Fragment table for sample 3 : egg 3

Name	Start Size [nt]	End Size [nt]	Area	% of total Area
18S	1,706	2,031	56.9	14.9
28S	2,851	3,809	131.7	34.5

Assay Class: Eukaryote Total RNA Pico
Data Path: C:\... bioanalyzer\2100 expert\data\2016-12-13\2016-12-13_003.xad

Created: 12/13/2016 12:06:39 PM
Modified: 12/13/2016 12:19:40 PM

Electropherogram Summary Continued ...



Overall Results for sample 4 : egg 4

RNA Area:	932.4	RNA Integrity Number (RIN):	8.7 (B.02.08)
RNA Concentration:	9,115 pg/μl	Result Flagging Color:	
rRNA Ratio [28s / 18s]:	1.6	Result Flagging Label:	RIN: 8.70

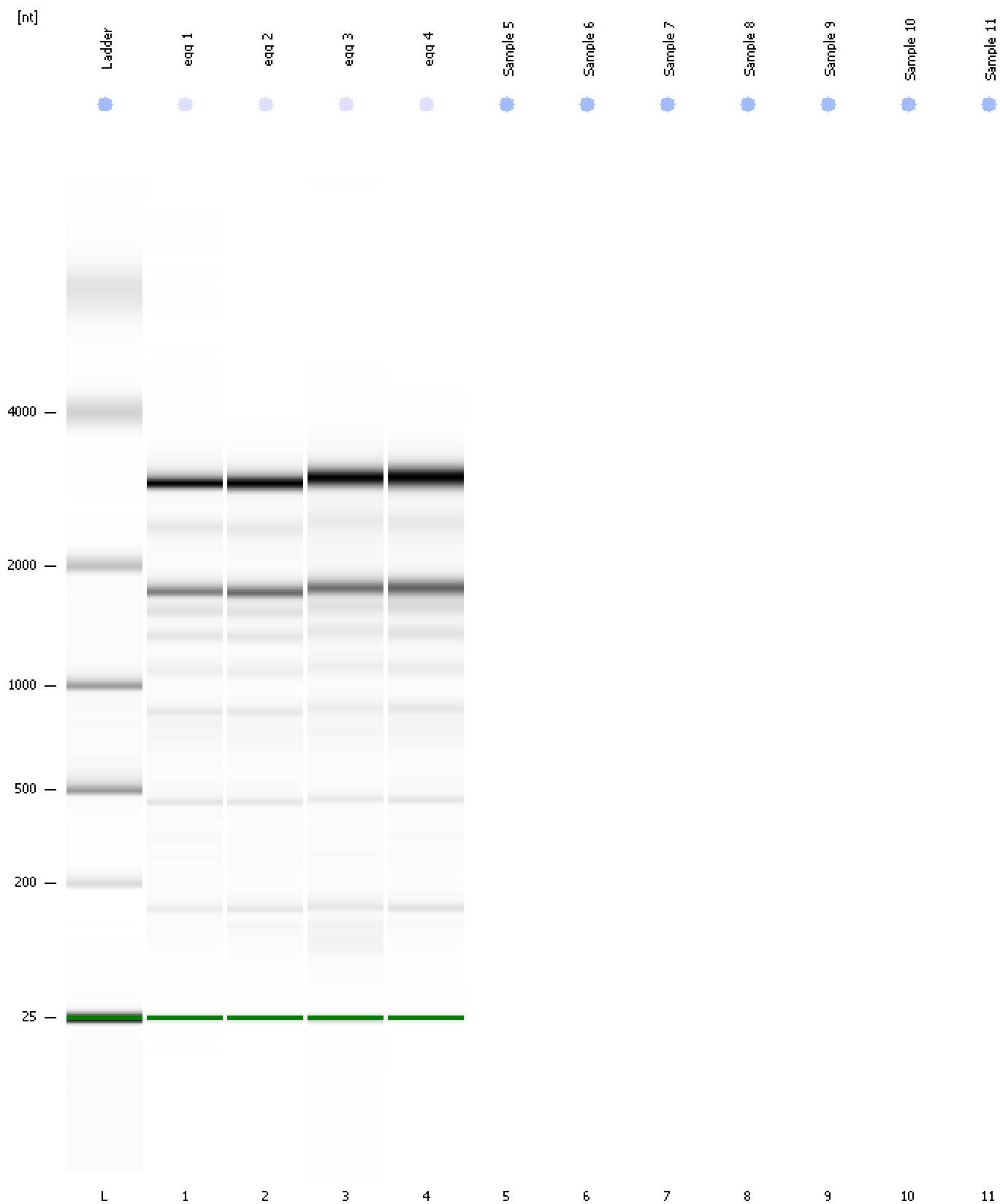
Fragment table for sample 4 : egg 4

Name	Start Size [nt]	End Size [nt]	Area	% of total Area
18S	1,545	2,098	192.4	20.6
28S	2,823	3,909	309.6	33.2

Assay Class: Eukaryote Total RNA Pico
Data Path: C:\... bioanalyzer\2100 expert\data\2016-12-13\2016-12-13_003.xad

Created: 12/13/2016 12:06:39 PM
Modified: 12/13/2016 12:19:40 PM

Gel Image



Assay Class: Eukaryote Total RNA Pico
Data Path: C:\... bioanalyzer\2100 expert\data\2016-12-13\2016-12-13_003.xad

Created: 12/13/2016 12:06:39 PM
Modified: 12/13/2016 12:19:40 PM

Invalid Samples

Sample 5 has not been run, no results available.

Sample 6 has not been run, no results available.

Sample 7 has not been run, no results available.

Sample 8 has not been run, no results available.

Sample 9 has not been run, no results available.

Sample 10 has not been run, no results available.

Sample 11 has not been run, no results available.

Assay Class: Eukaryote Total RNA Pico
 Data Path: C:\... bioanalyzer\2100 expert\data\2016-12-13\2016-12-13_003.xad

Created: 12/13/2016 12:06:39 PM
 Modified: 12/13/2016 12:19:40 PM

Run Logbook

Description	Number	Source	Category	Sub Category	Time	Time Zone	User	Host
Run ended on port 1 (Number of wells acquired: 5)		Instrument	Run		12/13/2016 12:19:36 PM	(GMT --08:00) Pacific Standard Time	UC Davis	D8XSMGH1
Run started on port 1 (File: C:\Program Files\Agilent\2100 bioanalyzer\2100 expert\data\2016-12-13\2016-12-13_003.xad)		Instrument	Run		12/13/2016 12:06:44 PM	(GMT --08:00) Pacific Standard Time	UC Davis	D8XSMGH1
Product Number : G2938B		Instrument	Run		12/13/2016 12:06:44 PM	(GMT --08:00) Pacific Standard Time	UC Davis	D8XSMGH1
Name :		Instrument	Run		12/13/2016 12:06:44 PM	(GMT --08:00) Pacific Standard Time	UC Davis	D8XSMGH1
Vendor : Agilent Technologies		Instrument	Run		12/13/2016 12:06:44 PM	(GMT --08:00) Pacific Standard Time	UC Davis	D8XSMGH1
Serial# : DE13701086		Instrument	Run		12/13/2016 12:06:44 PM	(GMT --08:00) Pacific Standard Time	UC Davis	D8XSMGH1
Firmware : C.01.069		Instrument	Run		12/13/2016 12:06:44 PM	(GMT --08:00) Pacific Standard Time	UC Davis	D8XSMGH1
Cartridge : Electrode		Instrument	Run		12/13/2016 12:06:44 PM	(GMT --08:00) Pacific Standard Time	UC Davis	D8XSMGH1