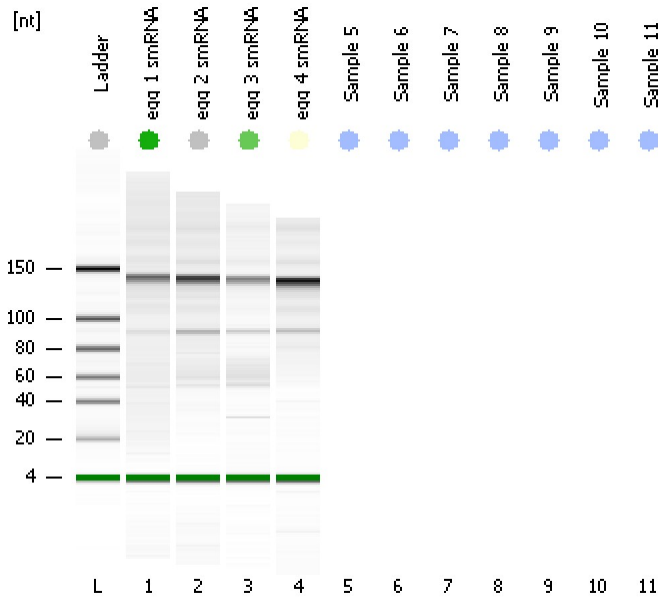


Assay Class: Small RNA
Data Path: C:\... bioanalyzer\2100 expert\data\2016-12-13\2016-12-13_004.xad

Created: 12/13/2016 1:00:41 PM
Modified: 12/13/2016 1:19:13 PM

Electrophoresis File Run Summary



Instrument Information:

Instrument Name: DE13701086 Firmware: C.01.069
Serial#: DE13701086 Type: G2938B

Assay Information:

Assay Origin Path: C:\Program Files\Agilent\2100 bioanalyzer\2100 expert\assays\RNA\Small RNA Series II.xsy

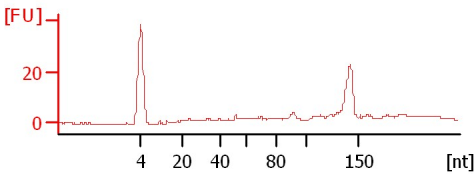
Assay Class: Small RNA
Version: 1.2
Assay Comments: Small RNA Analysis 6 - 150 nucleotides

© Copyright 2007 - 2009 Agilent Technologies, Inc.

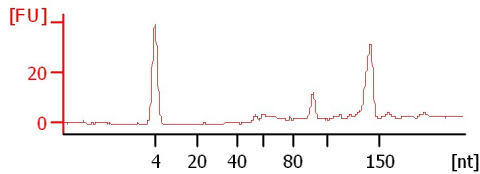
Chip Information:

Chip Lot #:
Reagent Kit Lot #:
Chip Comments:

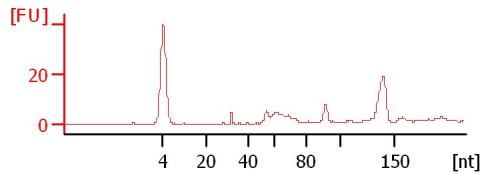
egg 1 smRNA
21 % miRNA; Concentration: 4.40 pg/µl



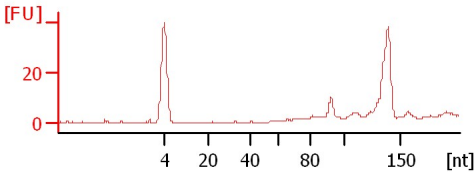
egg 2 smRNA
Number of Peaks: 7



egg 3 smRNA
8 % miRNA; Concentration: 35.80 pg/µl















egg 4 smRNA
1 % miRNA; Concentration: 4.50 pg/µl



Assay Class: Small RNA
Data Path: C:\... bioanalyzer\2100 expert\data\2016-12-13\2016-12-13_004.xad

Created: 12/13/2016 1:00:41 PM
Modified: 12/13/2016 1:19:13 PM

Electrophoresis File Run Summary (Chip Summary)

Sample Name	Sample Comment	Status	Result Label	Result Color
egg 1 smRNA		✓	21 % miRNA; Concentration: 4.40 pg/μl	
egg 2 smRNA		✓	Number of Peaks: 7	
egg 3 smRNA		✓	8 % miRNA; Concentration: 35.80 pg/μl	
egg 4 smRNA		✓	1 % miRNA; Concentration: 4.50 pg/μl	
Sample 5				
Sample 6				
Sample 7				
Sample 8				
Sample 9				
Sample 10				
Sample 11				
Ladder		✓	Number of Peaks: 6	

Chip Lot #

Reagent Kit Lot #

Chip Comments :

Assay Class: Small RNA
Data Path: C:\... bioanalyzer\2100 expert\data\2016-12-13\2016-12-13_004.xad

Created: 12/13/2016 1:00:41 PM
Modified: 12/13/2016 1:19:13 PM

Electrophoresis Assay Details

General Analysis Settings

Number of Available Sample and Ladder Wells (Max.) : 12

Minimum Visible Range [s] : 30

Maximum Visible Range [s] : 90

Start Analysis Time Range [s] : 31

End Analysis Time Range [s] : 89

Ladder Concentration [pg/ μ l] : 2500

Lower Marker Concentration [pg/ μ l] : 500

Upper Marker Concentration [pg/ μ l] : 0

Used Lower Marker for Quantitation

Standard Curve Fit is Logarithmic

Show Data Aligned to Lower Marker

Integrator Settings

Integration Start Time [s] : 30

Integration End Time [s] : 89

Slope Threshold : 0.6

Height Threshold [FU] : 3

Area Threshold : 0.2

Width Threshold [s] : 0.5

Baseline Plateau [s] : 60

Filter Settings

Filter Width [s] : 0.5

Polynomial Order : 4

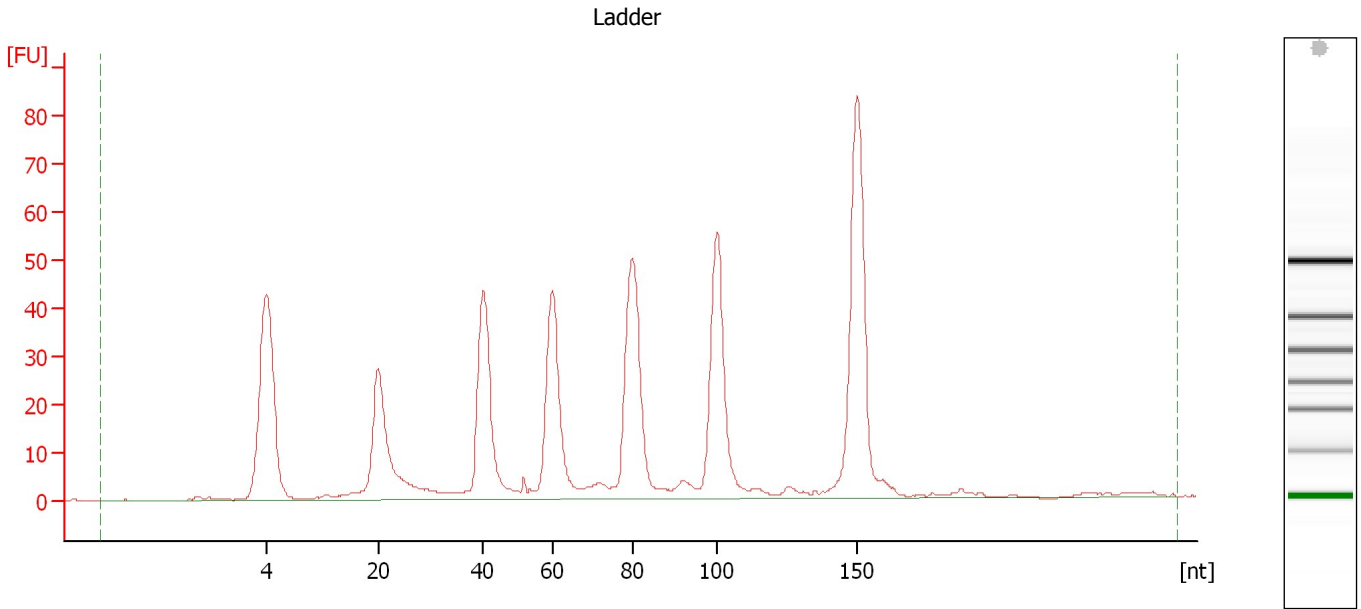
Ladder

Ladder Peak	Size
1	4
2	20
3	40
4	60
5	80
6	100
7	150

Assay Class: Small RNA
Data Path: C:\... bioanalyzer\2100 expert\data\2016-12-13\2016-12-13_004.xad

Created: 12/13/2016 1:00:41 PM
Modified: 12/13/2016 1:19:13 PM

Electropherogram Summary



Overall Results for Ladder

Result Flagging Color:

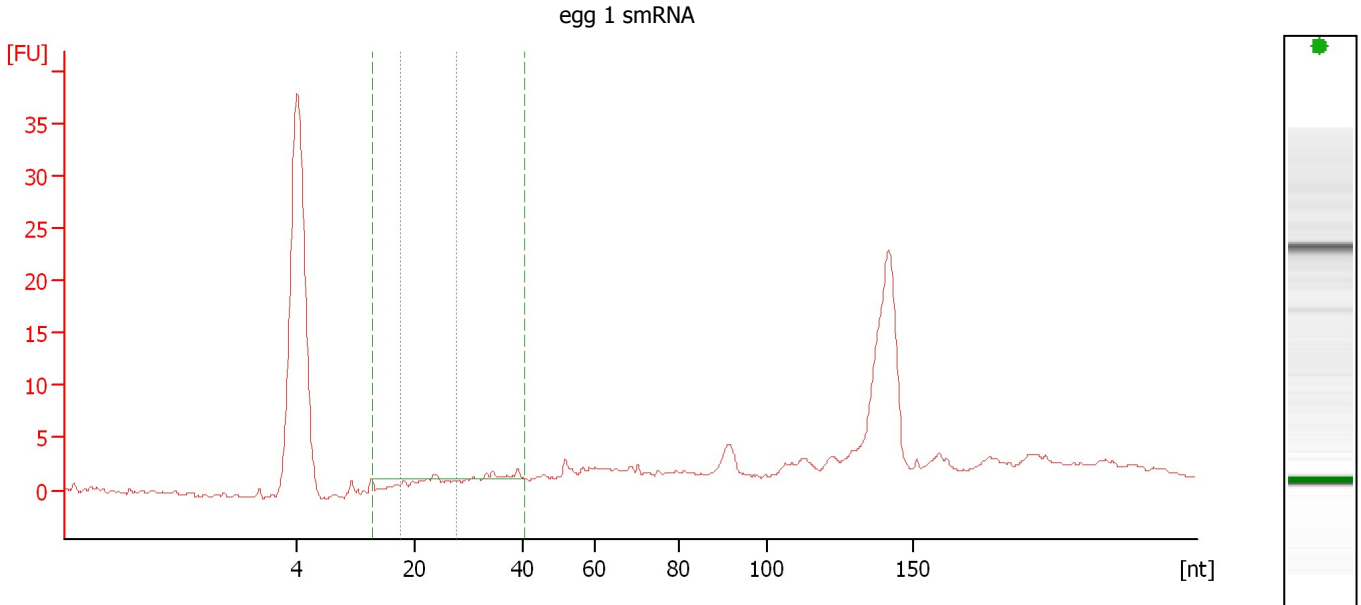
Result Flagging Label:

Number of Peaks: 6

Assay Class: Small RNA
 Data Path: C:\... bioanalyzer\2100 expert\data\2016-12-13\2016-12-13_004.xad

Created: 12/13/2016 1:00:41 PM
 Modified: 12/13/2016 1:19:13 PM

Electropherogram Summary Continued ...



Overall Results for sample 1 : egg 1 smRNA

Small RNA Concentration [pg/μl]:	20.8	Result Flagging Color:	
miRNA Concentration [pg/μl]:	4.4	Result Flagging Label:	21 % miRNA; Concentration: 4.40 pg/μl
miRNA / Small RNA Ratio [%]:	21		

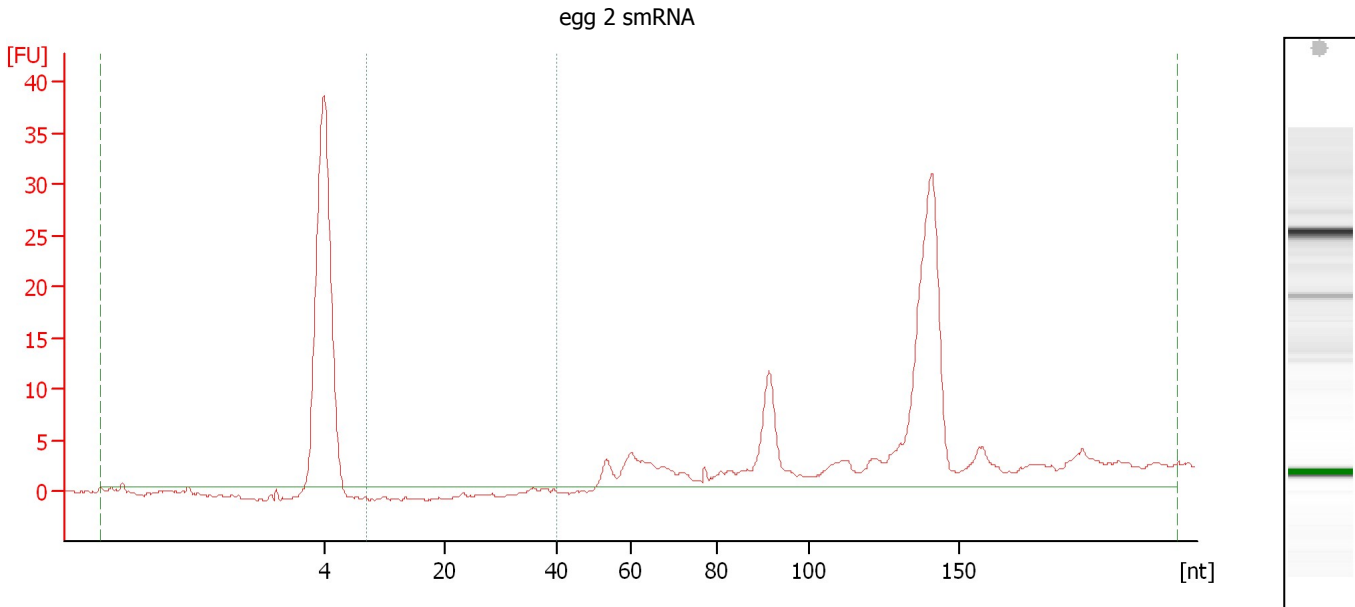
Region table for sample 1 : egg 1 smRNA

Name	From [nt]	To [nt]	Average Size [nt]	Size distribution in CV [%]	Conc. [pg/μl]	% of Total	Color
Small RNA	14	41	34	14.4	20.8	100	
miRNA	18	28	24	1.7	4.4	21	

Assay Class: Small RNA
 Data Path: C:\... bioanalyzer\2100 expert\data\2016-12-13\2016-12-13_004.xad

Created: 12/13/2016 1:00:41 PM
 Modified: 12/13/2016 1:19:13 PM

Electropherogram Summary Continued ...



Overall Results for sample 2 : egg 2 smRNA

Small RNA Concentration [pg/μl]:	555.3	Result Flagging Color:	
miRNA Concentration [pg/μl]:	0.0	Result Flagging Label:	Number of Peaks: 7
miRNA / Small RNA Ratio [%]:	0		

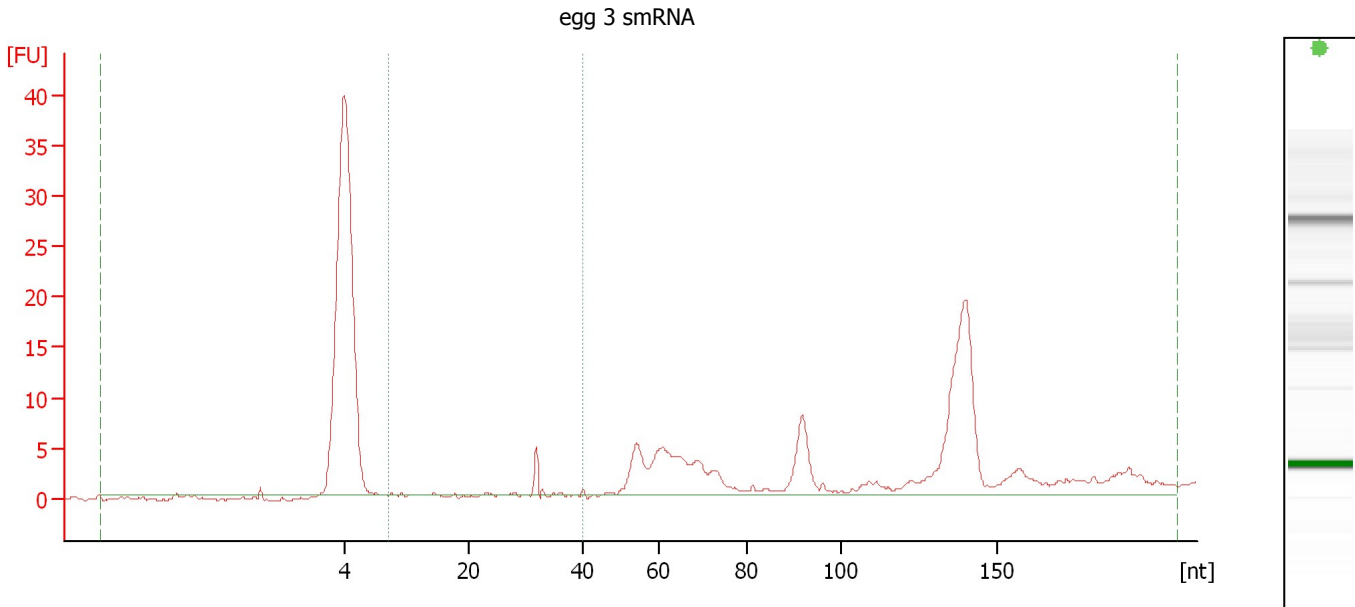
Region table for sample 2 : egg 2 smRNA

Name	From [nt]	To [nt]	Average Size [nt]	Size distribution in CV [%]	Conc. [pg/μl]	% of Total	Col or
Small RNA	0	222	102	65.1	555.3	100	
miRNA	10	40	0	0.0	0.0	0	

Assay Class: Small RNA
 Data Path: C:\... bioanalyzer\2100 expert\data\2016-12-13\2016-12-13_004.xad

Created: 12/13/2016 1:00:41 PM
 Modified: 12/13/2016 1:19:13 PM

Electropherogram Summary Continued ...



Overall Results for sample 3 : egg 3 smRNA

Small RNA Concentration [pg/μl]:	433.0	Result Flagging Color:	
miRNA Concentration [pg/μl]:	35.8	Result Flagging Label:	8 % miRNA; Concentration: 35.80 pg/μl
miRNA / Small RNA Ratio [%]:	8		

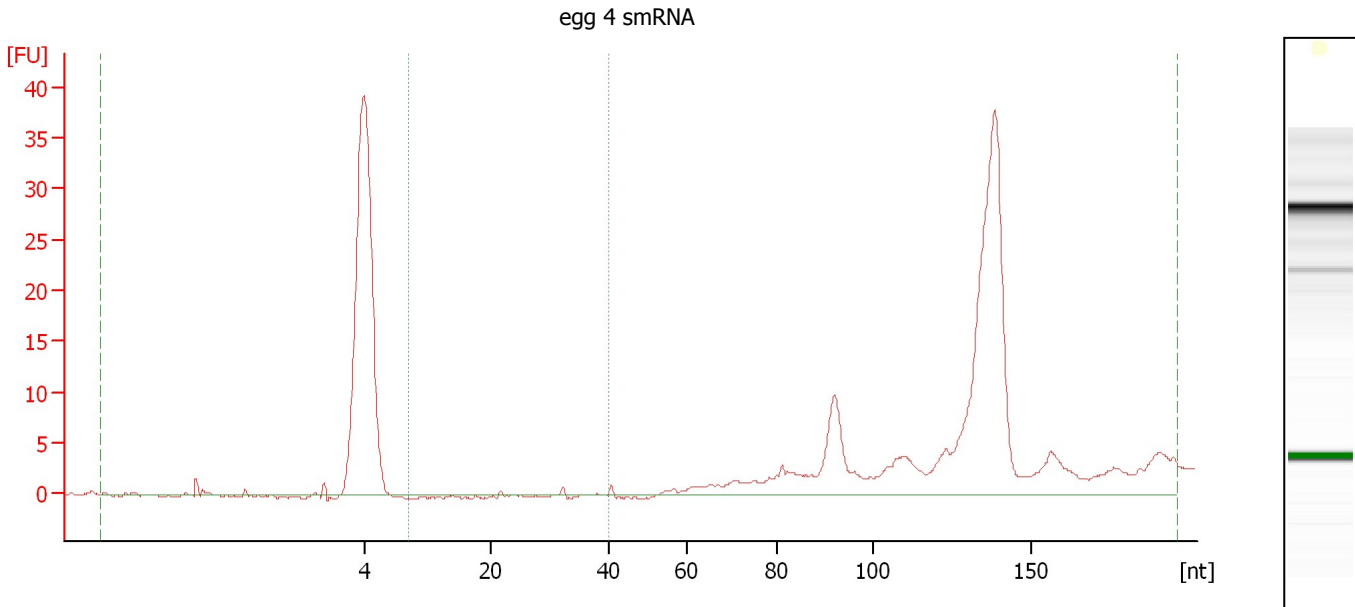
Region table for sample 3 : egg 3 smRNA

Name	From [nt]	To [nt]	Average Size [nt]	Size distribution in CV [%]	Conc. [pg/μl]	% of Total	Col or
Small RNA	0	208	80	82.1	433.0	100	
miRNA	10	40	29	24.7	35.8	8	

Assay Class: Small RNA
 Data Path: C:\... bioanalyzer\2100 expert\data\2016-12-13\2016-12-13_004.xad

Created: 12/13/2016 1:00:41 PM
 Modified: 12/13/2016 1:19:13 PM

Electropherogram Summary Continued ...



Overall Results for sample 4 : egg 4 smRNA

Small RNA Concentration [pg/μl]:	552.9	Result Flagging Color:	
miRNA Concentration [pg/μl]:	4.5	Result Flagging Label:	1 % miRNA; Concentration: 4.50 pg/μl
miRNA / Small RNA Ratio [%]:	1		

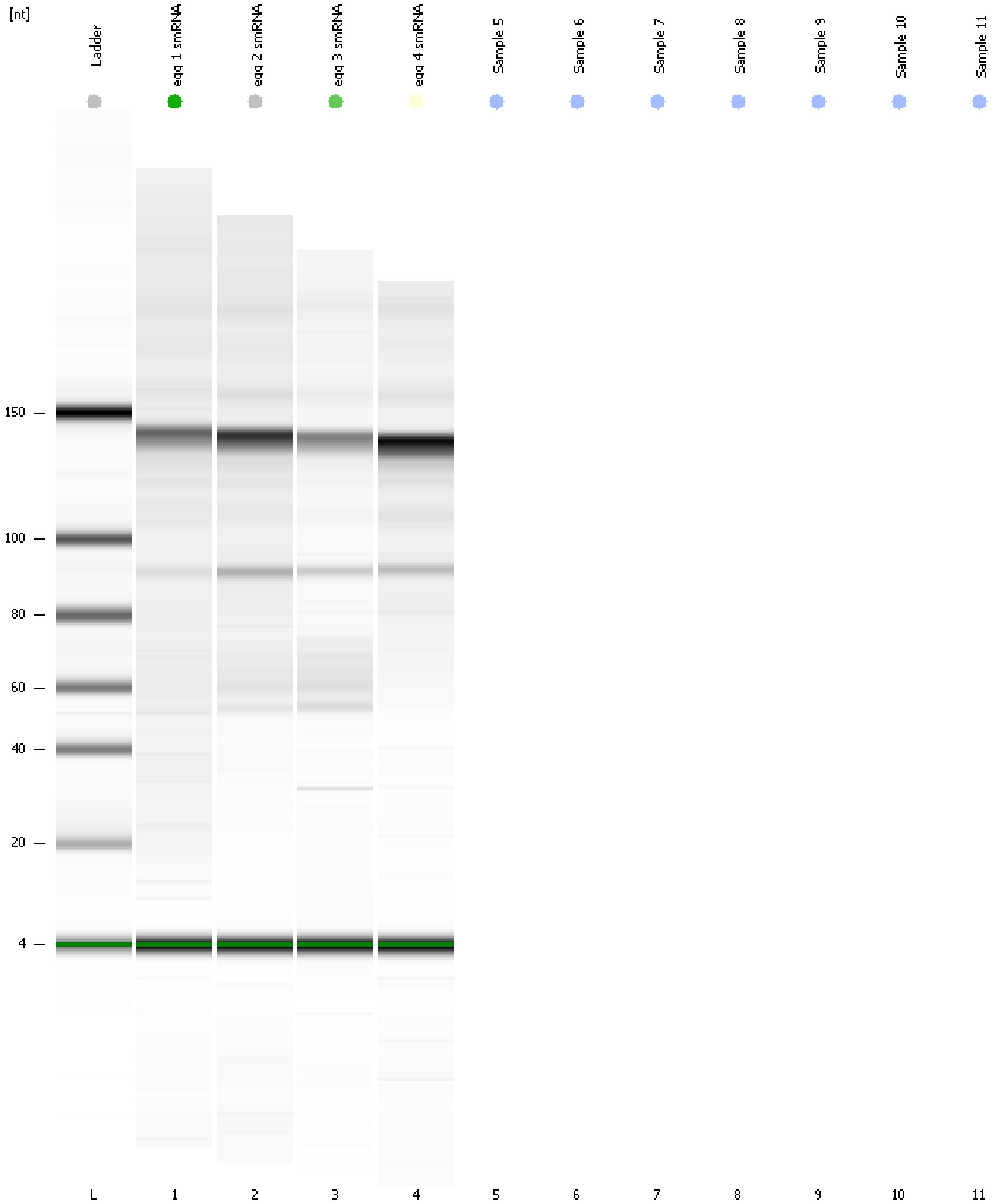
Region table for sample 4 : egg 4 smRNA

Name	From [nt]	To [nt]	Average Size [nt]	Size distribution in CV [%]	Conc. [pg/μl]	% of Total	Col or
Small RNA	0	196	97	63.2	552.9	100	
miRNA	10	40	30	17.9	4.5	1	

Assay Class: Small RNA
Data Path: C:\... bioanalyzer\2100 expert\data\2016-12-13\2016-12-13_004.xad

Created: 12/13/2016 1:00:41 PM
Modified: 12/13/2016 1:19:13 PM

Gel Image



Assay Class: Small RNA
Data Path: C:\... bioanalyzer\2100 expert\data\2016-12-13\2016-12-13_004.xad

Created: 12/13/2016 1:00:41 PM
Modified: 12/13/2016 1:19:13 PM

Invalid Samples

- Sample 5 has not been run, no results available.
- Sample 6 has not been run, no results available.
- Sample 7 has not been run, no results available.
- Sample 8 has not been run, no results available.
- Sample 9 has not been run, no results available.
- Sample 10 has not been run, no results available.
- Sample 11 has not been run, no results available.

Assay Class: Small RNA
 Data Path: C:\... bioanalyzer\2100 expert\data\2016-12-13\2016-12-13_004.xad

Created: 12/13/2016 1:00:41 PM
 Modified: 12/13/2016 1:19:13 PM

Run Logbook

Description	Number	Source	Category	Sub Category	Time	Time Zone	User	Host
Run ended on port 1 (Number of wells acquired: 5)		Instrument	Run		12/13/2016 1:19:12 PM	(GMT --08:00) Pacific Standard Time	UC Davis	D8XSMGH1
Run started on port 1 (File: C:\Program Files\Agilent\2100 bioanalyzer\2100 expert\data\2016-12-13\2016-12-13_004.xad)		Instrument	Run		12/13/2016 1:00:47 PM	(GMT --08:00) Pacific Standard Time	UC Davis	D8XSMGH1
Product Number : G2938B		Instrument	Run		12/13/2016 1:00:47 PM	(GMT --08:00) Pacific Standard Time	UC Davis	D8XSMGH1
Name :		Instrument	Run		12/13/2016 1:00:47 PM	(GMT --08:00) Pacific Standard Time	UC Davis	D8XSMGH1
Vendor : Agilent Technologies		Instrument	Run		12/13/2016 1:00:47 PM	(GMT --08:00) Pacific Standard Time	UC Davis	D8XSMGH1
Serial# : DE13701086		Instrument	Run		12/13/2016 1:00:47 PM	(GMT --08:00) Pacific Standard Time	UC Davis	D8XSMGH1
Firmware : C.01.069		Instrument	Run		12/13/2016 1:00:47 PM	(GMT --08:00) Pacific Standard Time	UC Davis	D8XSMGH1
Cartridge : Electrode		Instrument	Run		12/13/2016 1:00:47 PM	(GMT --08:00) Pacific Standard Time	UC Davis	D8XSMGH1