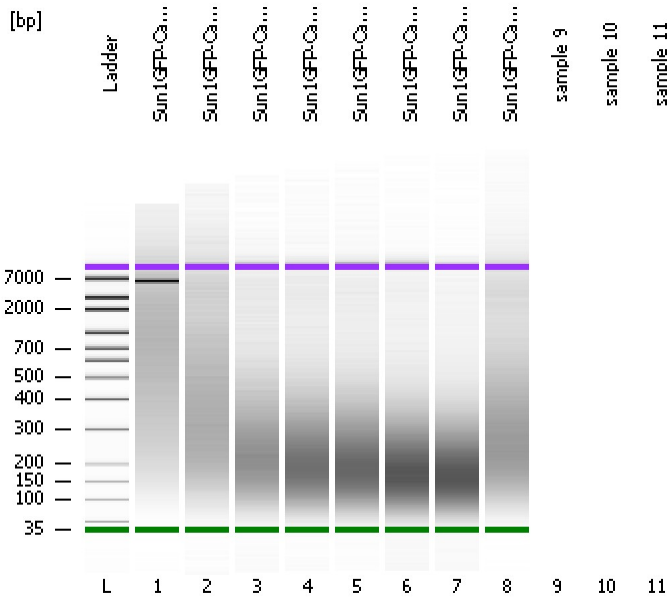


Assay Class: High Sensitivity DNA Assay
Data Path: C:\... bioanalyzer\2100 expert\data\2016-12-22\2016-12-22_001.xad

Created: 12/22/2016 10:27:26 AM
Modified: 12/22/2016 11:01:52 AM

Electrophoresis File Run Summary



Instrument Information:

Instrument Name: DE13701086 Firmware: C.01.069
Serial#: DE13701086 Type: G2938B

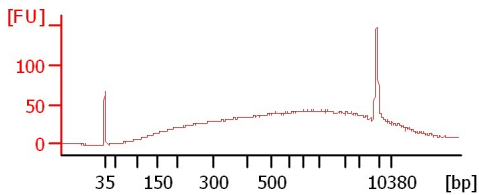
Assay Information:

Assay Origin Path: C:\Program Files\Agilent\2100 bioanalyzer\2100 expert\assays\dsDNA\High Sensitivity DNA.xsy
Assay Class: High Sensitivity DNA Assay
Version: 1.03
Assay Comments: Copyright © 2003-2010 Agilent Technologies

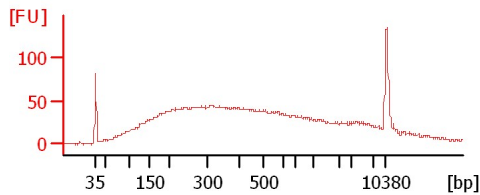
Chip Information:

Chip Lot #:
Reagent Kit Lot #:
Chip Comments:

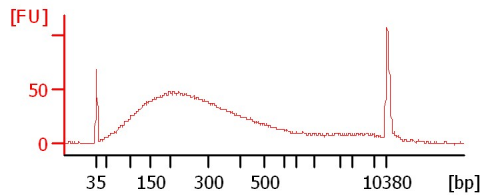
Sun1GFP-CamK-Cre nuclear chromatin af...



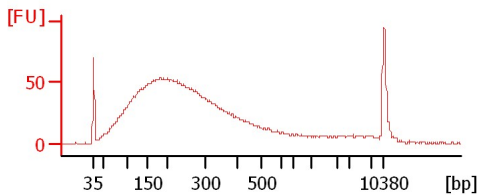
Sun1GFP-CamK-Cre nuclear chromatin af...



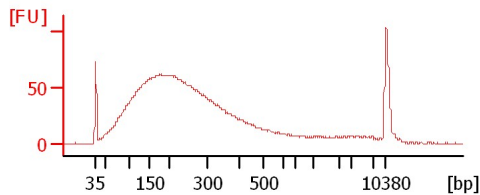
Sun1GFP-CamK-Cre nuclear chromatin af...



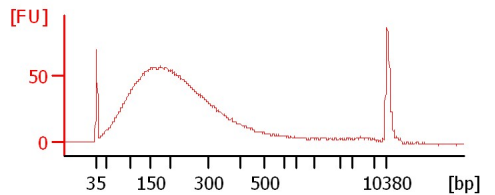
Sun1GFP-CamK-Cre nuclear chromatin af...



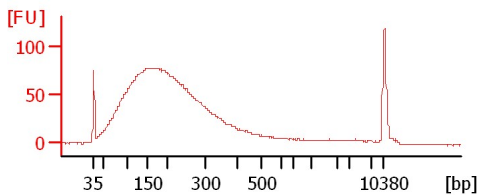
Sun1GFP-CamK-Cre nuclear chromatin af...



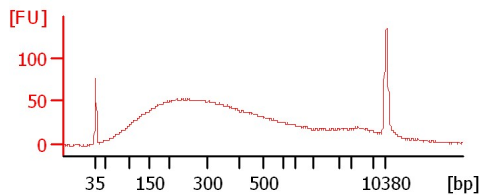
Sun1GFP-CamK-Cre nuclear chromatin af...



Sun1GFP-CamK-Cre nuclear chromatin af...



Sun1GFP-CamK-Cre nuclear chromatin af...



Assay Class: High Sensitivity DNA Assay
Data Path: C:\... bioanalyzer\2100 expert\data\2016-12-22\2016-12-22_001.xad

Created: 12/22/2016 10:27:26 AM
Modified: 12/22/2016 11:01:52 AM

Electrophoresis File Run Summary (Chip Summary)

Sample Name	Sample Comment	Rest. Digest	Status	Observation	Result Label	Result Color
Sun1GFP-CamK-Cre nuclear chromatin after covaris 1		<input type="checkbox"/>	✓			
Sun1GFP-CamK-Cre nuclear chromatin after covaris 2		<input type="checkbox"/>	✓			
Sun1GFP-CamK-Cre nuclear chromatin after covaris 4		<input type="checkbox"/>	✓			
Sun1GFP-CamK-Cre nuclear chromatin after covaris 5		<input type="checkbox"/>	✓			
Sun1GFP-CamK-Cre nuclear chromatin after covaris 6		<input type="checkbox"/>	✓			
Sun1GFP-CamK-Cre nuclear chromatin after covaris 7		<input type="checkbox"/>	✓			
Sun1GFP-CamK-Cre nuclear chromatin after covaris 8		<input type="checkbox"/>	✓			
Sun1GFP-CamK-Cre nuclear chromatin after covaris 3		<input type="checkbox"/>	✓			
sample 9		<input type="checkbox"/>				
sample 10		<input type="checkbox"/>				
sample 11		<input type="checkbox"/>				
Ladder		<input type="checkbox"/>	✓			

Chip Lot #

Reagent Kit Lot #

Chip Comments :

Assay Class: High Sensitivity DNA Assay
Data Path: C:\... bioanalyzer\2100 expert\data\2016-12-22\2016-12-22_001.xad

Created: 12/22/2016 10:27:26 AM
Modified: 12/22/2016 11:01:52 AM

Electrophoresis Assay Details

General Analysis Settings

Number of Available Sample and Ladder Wells (Max.) : 12
Minimum Visible Range [s] : 32
Maximum Visible Range [s] : 138
Start Analysis Time Range [s] : 33
End Analysis Time Range [s] : 137.5
Ladder Concentration [pg/μl] : 1950
Uses Standard Area for Ladder Fragments
Lower Marker Concentration [pg/μl] : 125
Upper Marker Concentration [pg/μl] : 75
Used Upper Marker for Quantitation
Standard Curve Fit is Point to Point
Show Data Aligned to Lower and Upper Marker

Integrator Settings

Integration Start Time [s] : 33.05
Integration End Time [s] : 137
Slope Threshold : 0.8
Height Threshold [FU] : 5
Area Threshold : 0.1
Width Threshold [s] : 0.6
Baseline Plateau [s] : 0.5

Filter Settings

Filter Width [s] : 0.5
Polynomial Order : 4

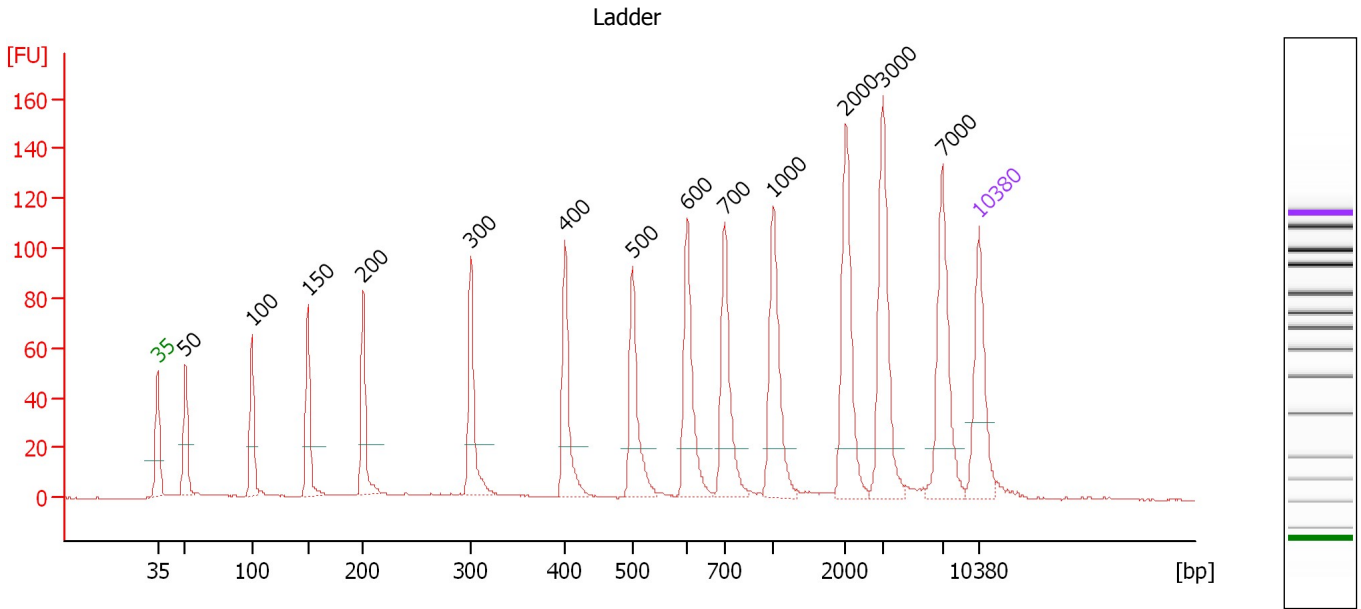
Ladder

Ladder Peak	Size	Area
1	35	160
2	50	210
3	100	208
4	150	221
5	200	242
6	300	270
7	400	305
8	500	306
9	600	336
10	700	321
11	1000	366
12	2000	413
13	3000	411
14	7000	400
15	10380	214

Assay Class: High Sensitivity DNA Assay
 Data Path: C:\... bioanalyzer\2100 expert\data\2016-12-22\2016-12-22_001.xad

Created: 12/22/2016 10:27:26 AM
 Modified: 12/22/2016 11:01:52 AM

Electropherogram Summary



Overall Results for Ladder

Noise: 0.2

Peak table for Ladder

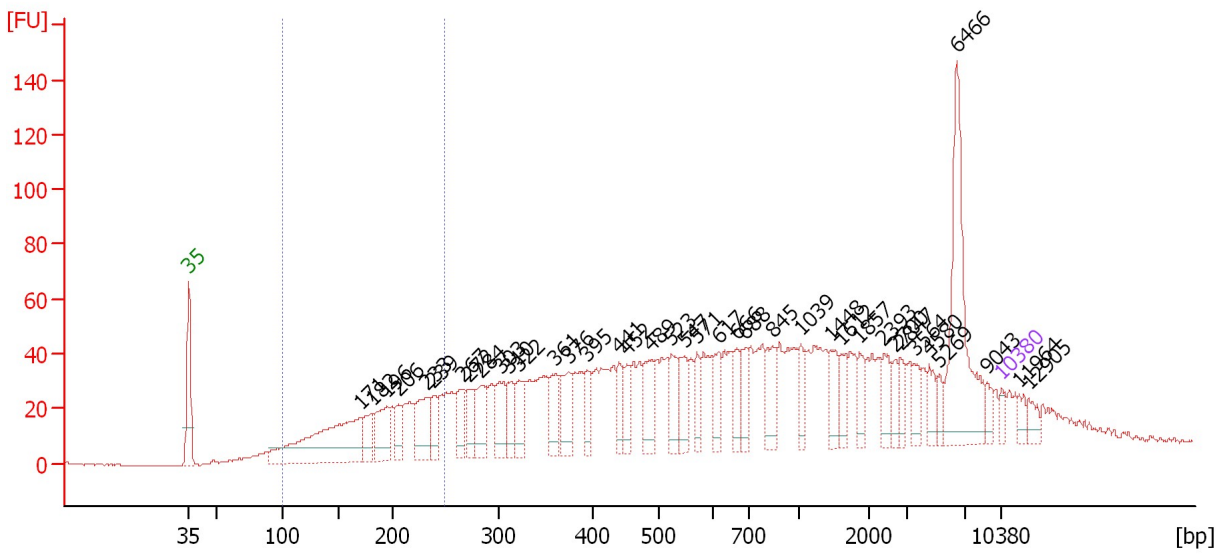
Peak	Size [bp]	Conc. [pg/μl]	Molarity [pmol/l]	Observations	Aligned Migration Time [s]
1	35	125.00	5,411.3	Lower Marker	43.00
2	50	150.00	4,545.5	Ladder Peak	45.36
3	100	150.00	2,272.7	Ladder Peak	51.06
4	150	150.00	1,515.2	Ladder Peak	55.83
5	200	150.00	1,136.4	Ladder Peak	60.51
6	300	150.00	757.6	Ladder Peak	69.68
7	400	150.00	568.2	Ladder Peak	77.73
8	500	150.00	454.5	Ladder Peak	83.48
9	600	150.00	378.8	Ladder Peak	88.16
10	700	150.00	324.7	Ladder Peak	91.34
11	1,000	150.00	227.3	Ladder Peak	95.49
12	2,000	150.00	113.6	Ladder Peak	101.66
13	3,000	150.00	75.8	Ladder Peak	104.80
14	7,000	150.00	32.5	Ladder Peak	109.86
15	10,380	75.00	10.9	Upper Marker	113.00

Assay Class: High Sensitivity DNA Assay
 Data Path: C:\... bioanalyzer\2100 expert\data\2016-12-22\2016-12-22_001.xad

Created: 12/22/2016 10:27:26 AM
 Modified: 12/22/2016 11:01:52 AM

Electropherogram Summary Continued ...

Sun1GFP-CamK-Cre nuclear chromatin after covaris 1



Overall Results for sample 1 : Sun1GFP-CamK-Cre nuclear chromatin after covaris 1

Number of peaks found: 39 Corr. Area 1: 362.4
 Noise: 0.2

Peak table for sample 1 : Sun1GFP-CamK-Cre nuclear chromatin after covaris 1

Peak	Size [bp]	Conc. [pg/μl]	Molarity [pmol/l]	Observations	Aligned Migration Time [s]
1	35	125.00	5,411.3	Lower Marker	43.00
2	171	2,021.05	17,916.5		57.79
3	182	324.02	2,701.7		58.80
4	196	554.80	4,290.0		60.13
5	206	258.99	1,901.4		61.10
6	233	589.91	3,837.0		63.53
7	239	312.58	1,982.0		64.08
8	267	339.15	1,924.5		66.65
9	272	319.12	1,780.7		67.07
10	284	467.19	2,496.4		68.17
11	303	444.79	2,224.5		69.92
12	310	355.26	1,734.3		70.51
13	322	369.76	1,738.1		71.48
14	361	360.24	1,511.5		74.60
15	376	450.51	1,815.7		75.80
16	395	269.33	1,032.3		77.36
17	441	253.90	873.1		80.07
18	452	250.96	841.6		80.71
19	489	410.62	1,273.2		82.82
20	523	408.31	1,182.1		84.57
21	547	296.87	822.4		85.67
22	571	233.81	619.9		86.82
23	617	318.11	781.0		88.70
24	666	275.74	627.1		90.26
25	688	242.37	533.9		90.95

Assay Class: High Sensitivity DNA Assay
 Data Path: C:\... bioanalyzer\2100 expert\data\2016-12-22\2016-12-22_001.xad

Created: 12/22/2016 10:27:26 AM
 Modified: 12/22/2016 11:01:52 AM

Electropherogram Summary Continued ...

... Peak table for sample 1 : Sun1GFP-CamK-Cre nuclear chromatin after covaris 1

Peak	Size [bp]	Conc. [pg/μl]	Molarity [pmol/l]	Observations	Aligned Migration Time [s]
26	845	342.63	614.5		93.34
27	1,039	215.42	314.1		95.73
28	1,448	258.17	270.1		98.26
29	1,612	178.67	167.9		99.27
30	1,857	180.07	146.9		100.78
31	2,393	203.68	129.0		102.90
32	2,700	149.68	84.0		103.86
33	2,847	138.30	73.6		104.32
34	3,564	179.23	76.2		105.51
35	4,580	163.16	54.0		106.80
36	5,269	115.40	33.2		107.67
37	6,466	1,343.02	314.7		109.19
38	9,043	100.04	16.8		111.76
39	10,380	75.00	10.9	Upper Marker	113.00
40	11,964	0.00	0.0		114.47
41	12,905	0.00	0.0		115.34

Region table for sample 1 : Sun1GFP-CamK-Cre nuclear chromatin after covaris 1

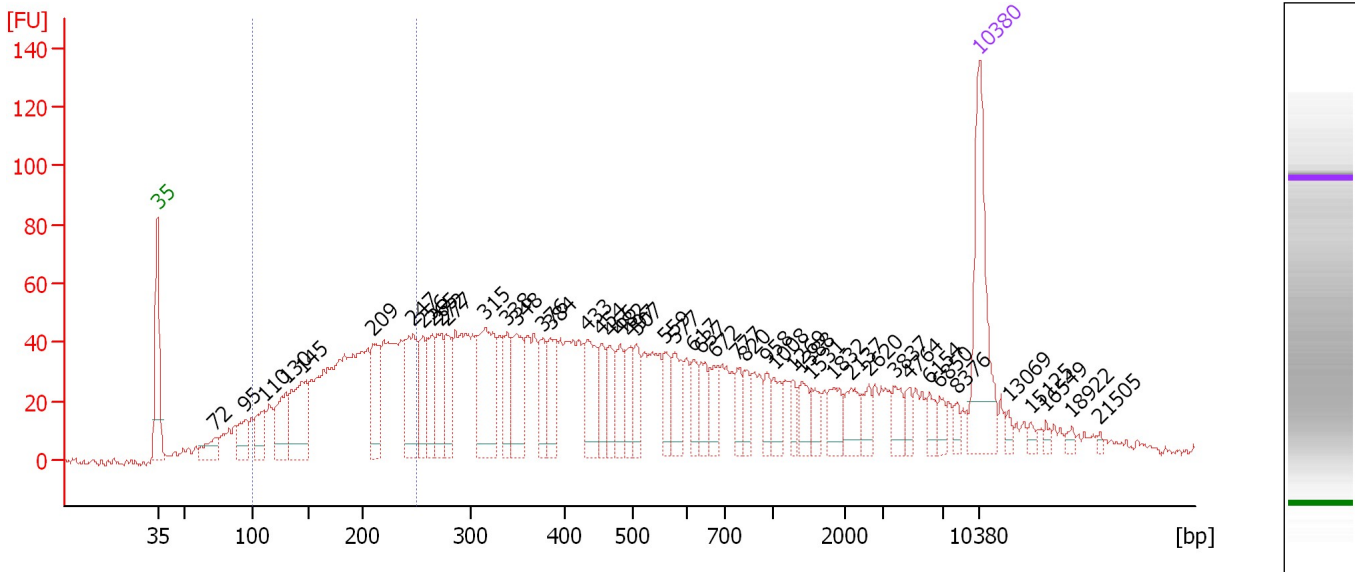
From [bp]	To [bp]	Average Size [bp]	Corr. Area	Molarity [pmol/l]	Co Conc. lor [pg/μl]	% of Total	Size distribution in CV [%]
100	250	190	362.4	40,939.8	4,774.10	16	21.0

Assay Class: High Sensitivity DNA Assay
 Data Path: C:\... bioanalyzer\2100 expert\data\2016-12-22\2016-12-22_001.xad

Created: 12/22/2016 10:27:26 AM
 Modified: 12/22/2016 11:01:52 AM

Electropherogram Summary Continued ...

Sun1GFP-CamK-Cre nuclear chromatin after covaris 2



Overall Results for sample 2 : Sun1GFP-CamK-Cre nuclear chromatin after covaris 2

Number of peaks found: 47 Corr. Area 1: 736.1
 Noise: 1.4

Peak table for sample 2 : Sun1GFP-CamK-Cre nuclear chromatin after covaris 2

Peak	Size [bp]	Conc. [pg/μl]	Molarity [pmol/l]	Observations	Aligned Migration Time [s]
1	35	125.00	5,411.3	Lower Marker	43.00
2	72	22.07	465.9		47.84
3	95	27.59	440.1		50.48
4	110	31.04	426.0		52.05
5	130	51.78	604.1		53.91
6	145	79.16	828.9		55.33
7	209	52.69	381.8		61.34
8	247	73.43	450.5		64.82
9	256	35.75	212.0		65.60
10	265	35.43	202.9		66.43
11	272	43.33	241.3		67.12
12	277	34.65	189.6		67.56
13	315	89.47	430.4		70.88
14	338	32.28	144.7		72.74
15	348	51.40	224.0		73.52
16	376	30.35	122.4		75.77
17	384	37.88	149.4		76.46
18	433	43.47	152.1		79.64
19	454	24.36	81.4		80.81
20	466	25.53	82.9		81.55
21	482	26.59	83.6		82.43
22	497	26.46	80.7		83.31
23	507	22.72	67.9		83.80
24	559	21.27	57.6		86.24
25	577	28.25	74.2		87.07

Assay Class: High Sensitivity DNA Assay
 Data Path: C:\... bioanalyzer\2100 expert\data\2016-12-22\2016-12-22_001.xad

Created: 12/22/2016 10:27:26 AM
 Modified: 12/22/2016 11:01:52 AM

Electropherogram Summary Continued ...

... Peak table for sample 2 : Sun1GFP-CamK-Cre nuclear chromatin after covaris 2

Peak	Size [bp]	Conc. [pg/μl]	Molarity [pmol/l]	Observations	Aligned Migration Time [s]
26	617	17.43	42.8		88.69
27	637	21.77	51.8		89.32
28	672	18.84	42.5		90.45
29	777	16.16	31.5		92.41
30	820	13.45	24.9		92.99
31	958	12.64	20.0		94.90
32	1,008	14.98	22.5		95.54
33	1,269	9.98	11.9		97.15
34	1,388	15.89	17.3		97.88
35	1,531	11.08	11.0		98.77
36	1,832	18.04	14.9		100.62
37	2,137	18.63	13.2		102.09
38	2,620	10.49	6.1		103.61
39	3,837	13.39	5.3		105.86
40	4,764	8.52	2.7		107.03
41	6,154	9.03	2.2		108.79
42	6,850	8.13	1.8		109.67
43	8,376	5.28	1.0		111.14
44	10,380	75.00	10.9	Upper Marker	113.00
45	13,069	0.00	0.0		115.49
46	15,125	0.00	0.0		117.40
47	16,549	0.00	0.0		118.72
48	18,922	0.00	0.0		120.92
49	21,505	0.00	0.0		123.32

Region table for sample 2 : Sun1GFP-CamK-Cre nuclear chromatin after covaris 2

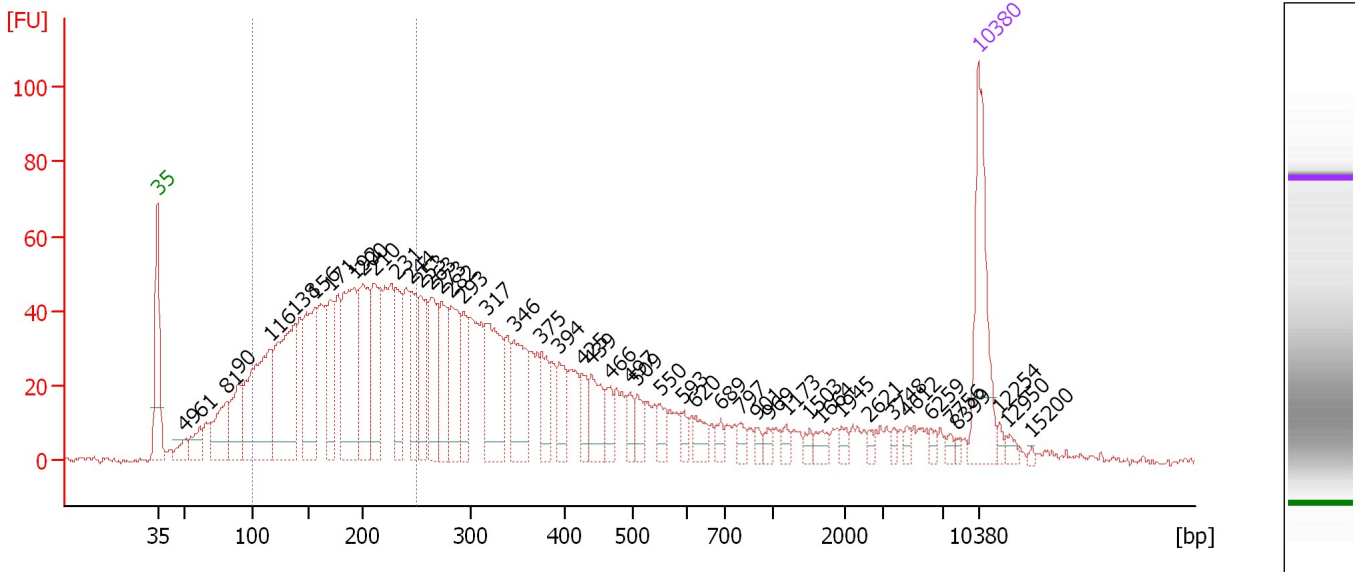
From [bp]	To [bp]	Average Size [bp]	Corr. Area	Molarity [pmol/l]	Co Conc. lor [pg/μl]	% of Total	Size distribution in CV [%]
100	250	186	736.1	6,464.1	734.25	27	22.1

Assay Class: High Sensitivity DNA Assay
 Data Path: C:\... bioanalyzer\2100 expert\data\2016-12-22\2016-12-22_001.xad

Created: 12/22/2016 10:27:26 AM
 Modified: 12/22/2016 11:01:52 AM

Electropherogram Summary Continued ...

Sun1GFP-CamK-Cre nuclear chromatin after covaris 4



Overall Results for sample 3 : Sun1GFP-CamK-Cre nuclear chromatin after covaris 4

Number of peaks found: 47 Corr. Area 1: 965.4
 Noise: 0.9

Peak table for sample 3 : Sun1GFP-CamK-Cre nuclear chromatin after covaris 4

Peak	Size [bp]	Conc. [pg/μl]	Molarity [pmol/l]	Observations	Aligned Migration Time [s]
1	35	125.00	5,411.3	Lower Marker	43.00
2	49	16.23	499.9		45.24
3	61	26.41	659.6		46.58
4	81	60.47	1,134.9		48.86
5	90	57.88	975.7		49.91
6	116	173.63	2,267.2		52.59
7	138	166.89	1,827.0		54.72
8	156	118.51	1,149.5		56.41
9	171	67.78	602.2		57.76
10	192	139.47	1,101.9		59.74
11	200	100.88	765.2		60.49
12	210	80.05	577.5		61.43
13	231	56.50	371.2		63.32
14	244	62.02	384.8		64.56
15	253	54.93	328.4		65.41
16	263	68.12	392.2		66.30
17	273	64.41	357.6		67.19
18	282	68.19	366.2		68.04
19	293	41.62	214.9		69.08
20	317	92.17	440.2		71.07
21	346	69.23	303.5		73.35
22	375	32.05	129.4		75.74
23	394	29.85	114.9		77.23
24	425	18.81	67.1		79.17
25	439	35.86	123.8		79.96

Assay Class: High Sensitivity DNA Assay
 Data Path: C:\... bioanalyzer\2100 expert\data\2016-12-22\2016-12-22_001.xad

Created: 12/22/2016 10:27:26 AM
 Modified: 12/22/2016 11:01:52 AM

Electropherogram Summary Continued ...

... Peak table for sample 3 : Sun1GFP-CamK-Cre nuclear chromatin after covaris 4

Peak	Size [bp]	Conc. [pg/μl]	Molarity [pmol/l]	Observations	Aligned Migration Time [s]
26	466	18.96	61.6		81.55
27	497	14.86	45.3		83.29
28	509	16.77	49.9		83.89
29	550	14.62	40.3		85.82
30	593	8.69	22.2		87.81
31	620	15.52	37.9		88.81
32	689	9.46	20.8		90.99
33	797	7.44	14.1		92.68
34	901	6.12	10.3		94.12
35	969	6.04	9.4		95.07
36	1,173	5.82	7.5		96.56
37	1,503	5.49	5.5		98.59
38	1,664	8.66	7.9		99.59
39	1,945	5.74	4.5		101.33
40	2,621	4.64	2.7		103.61
41	3,748	4.17	1.7		105.75
42	4,612	4.36	1.4		106.84
43	6,259	4.96	1.2		108.93
44	7,756	3.69	0.7		110.57
45	8,399	2.98	0.5		111.16
46	10,380	75.00	10.9	Upper Marker	113.00
47	12,254	0.00	0.0		114.74
48	12,950	0.00	0.0		115.38
49	15,200	0.00	0.0		117.47

Region table for sample 3 : Sun1GFP-CamK-Cre nuclear chromatin after covaris 4

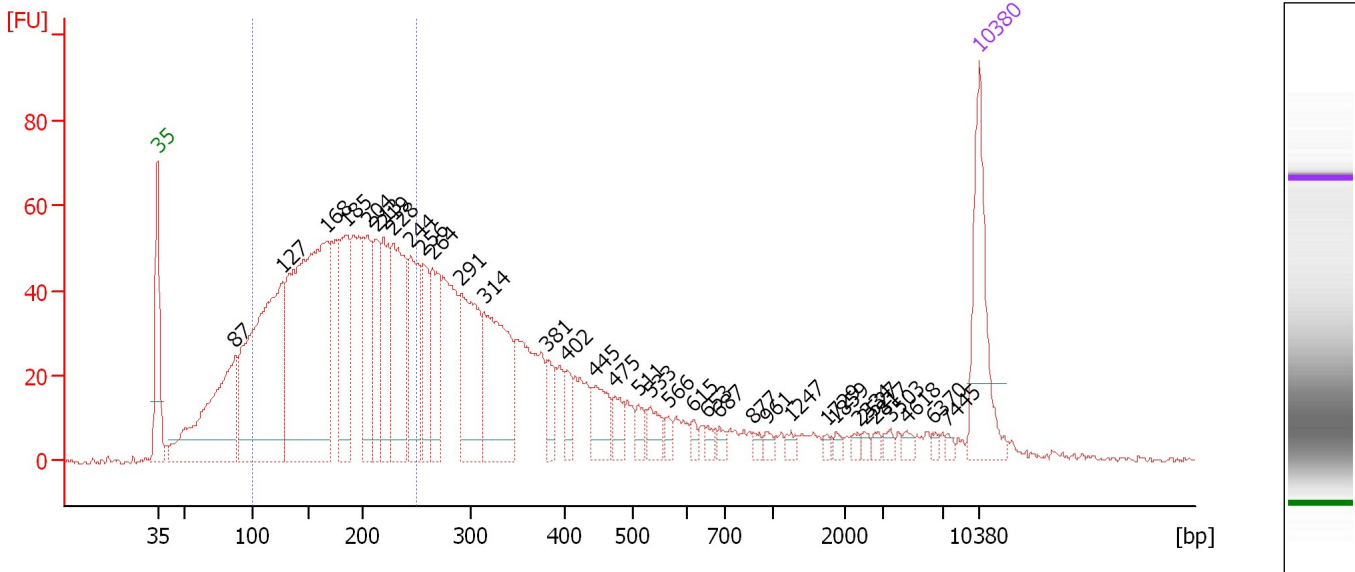
From [bp]	To [bp]	Average Size [bp]	Corr. Area	Molarity [pmol/l]	Co Conc. lor [pg/μl]	% of Total	Size distribution in CV [%]
100	250	181	965.4	11,523.5	1,268.31	44	23.1

Assay Class: High Sensitivity DNA Assay
 Data Path: C:\... bioanalyzer\2100 expert\data\2016-12-22\2016-12-22_001.xad

Created: 12/22/2016 10:27:26 AM
 Modified: 12/22/2016 11:01:52 AM

Electropherogram Summary Continued ...

Sun1GFP-CamK-Cre nuclear chromatin after covaris 5



Overall Results for sample 4 : Sun1GFP-CamK-Cre nuclear chromatin after covaris 5

Number of peaks found: 35 Corr. Area 1: 1,131.4
 Noise: 0.8

Peak table for sample 4 : Sun1GFP-CamK-Cre nuclear chromatin after covaris 5

Peak	Size [bp]	Conc. [pg/μl]	Molarity [pmol/l]	Observations	Aligned Migration Time [s]
1	35	125.00	5,411.3	Lower Marker	43.00
2	87	233.35	4,051.6		49.61
3	127	375.93	4,482.9		53.64
4	168	468.06	4,232.9		57.47
5	185	123.56	1,013.2		59.09
6	204	81.08	601.4		60.90
7	213	78.41	559.0		61.66
8	219	97.80	676.2		62.27
9	228	143.61	954.6		63.07
10	244	98.20	608.7		64.59
11	256	61.49	364.0		65.64
12	264	79.60	456.4		66.40
13	291	125.16	651.2		68.87
14	314	139.78	673.6		70.84
15	381	24.89	99.1		76.18
16	402	21.39	80.6		77.85
17	445	36.21	123.3		80.32
18	475	18.80	60.0		82.03
19	511	13.90	41.2		84.00
20	533	19.09	54.3		85.01
21	566	8.10	21.7		86.57
22	615	6.73	16.6		88.64
23	653	6.67	15.5		89.85
24	687	7.17	15.8		90.91
25	877	4.88	8.4		93.79

Assay Class: High Sensitivity DNA Assay
 Data Path: C:\... bioanalyzer\2100 expert\data\2016-12-22\2016-12-22_001.xad

Created: 12/22/2016 10:27:26 AM
 Modified: 12/22/2016 11:01:52 AM

Electropherogram Summary Continued ...

... Peak table for sample 4 : Sun1GFP-CamK-Cre nuclear chromatin after covaris 5

Peak	Size [bp]	Conc. [pg/μl]	Molarity [pmol/l]	Observations	Aligned Migration Time [s]
26	961	5.89	9.3		94.95
27	1,247	5.90	7.2		97.01
28	1,729	3.47	3.0		99.99
29	1,859	3.95	3.2		100.80
30	2,334	4.00	2.6		102.71
31	2,527	3.69	2.2		103.32
32	2,817	4.16	2.2		104.22
33	3,503	4.94	2.1		105.44
34	4,618	4.93	1.6		106.85
35	6,370	2.94	0.7		109.07
36	7,445	3.14	0.6		110.28
37	10,380	75.00	10.9	Upper Marker	113.00

Region table for sample 4 : Sun1GFP-CamK-Cre nuclear chromatin after covaris 5

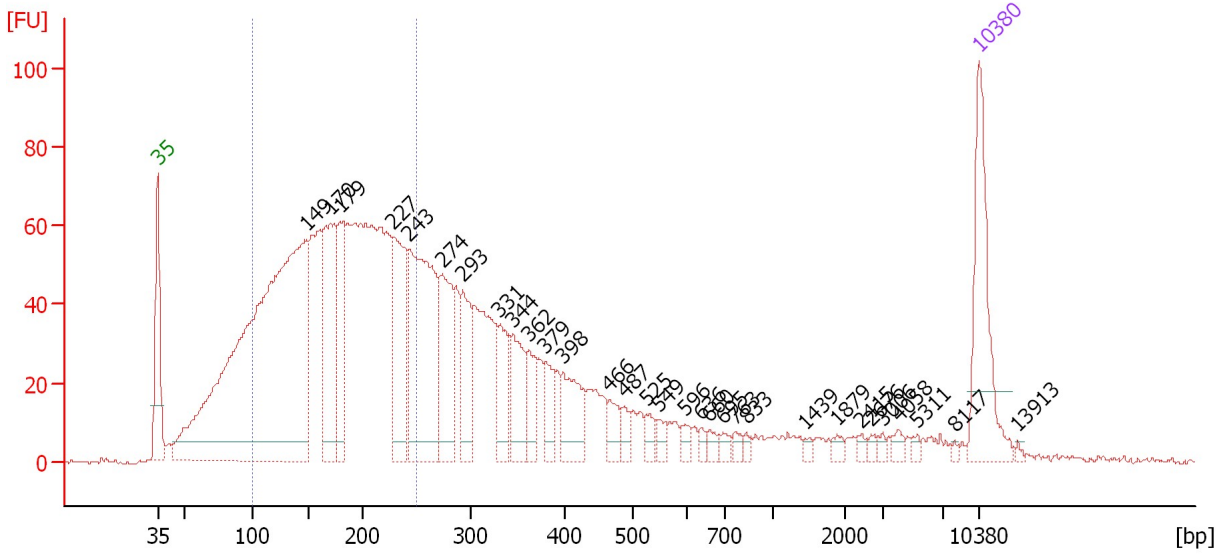
From [bp]	To [bp]	Average Size [bp]	Corr. Area	Molarity [pmol/l]	Co Conc. lor [pg/μl]	% of Total	Size distribution in CV [%]
100	250	178	1,131.4	14,698.6	1,594.70	49	23.3

Assay Class: High Sensitivity DNA Assay
 Data Path: C:\... bioanalyzer\2100 expert\data\2016-12-22\2016-12-22_001.xad

Created: 12/22/2016 10:27:26 AM
 Modified: 12/22/2016 11:01:52 AM

Electropherogram Summary Continued ...

Sun1GFP-CamK-Cre nuclear chromatin after covaris 6



Overall Results for sample 5 : Sun1GFP-CamK-Cre nuclear chromatin after covaris 6

Number of peaks found: 31 Corr. Area 1: 1,316.2
 Noise: 0.6

Peak table for sample 5 : Sun1GFP-CamK-Cre nuclear chromatin after covaris 6

Peak	Size [bp]	Conc. [pg/μl]	Molarity [pmol/l]	Observations	Aligned Migration Time [s]
1	35	125.00	5,411.3	Lower Marker	43.00
2	149	768.79	7,838.4		55.70
3	170	147.83	1,314.0		57.75
4	179	84.81	717.0		58.57
5	227	125.34	835.2		63.02
6	243	215.29	1,342.3		64.46
7	274	88.85	491.8		67.27
8	293	57.93	299.8		69.01
9	331	42.99	197.1		72.14
10	344	51.43	226.6		73.21
11	362	30.71	128.4		74.70
12	379	23.48	93.9		76.03
13	398	45.11	171.8		77.56
14	466	16.88	54.9		81.51
15	487	10.17	31.6		82.74
16	525	10.03	29.0		84.63
17	549	7.16	19.8		85.76
18	596	8.01	20.4		87.96
19	636	4.85	11.5		89.29
20	660	6.43	14.8		90.06
21	695	6.06	13.2		91.19
22	763	5.59	11.1		92.21
23	833	3.95	7.2		93.18
24	1,439	3.12	3.3		98.20
25	1,879	4.69	3.8		100.92

Assay Class: High Sensitivity DNA Assay
 Data Path: C:\... bioanalyzer\2100 expert\data\2016-12-22\2016-12-22_001.xad

Created: 12/22/2016 10:27:26 AM
 Modified: 12/22/2016 11:01:52 AM

Electropherogram Summary Continued ...

... Peak table for sample 5 : Sun1GFP-CamK-Cre nuclear chromatin after covaris 6

Peak	Size [bp]	Conc. [pg/μl]	Molarity [pmol/l]	Observations	Aligned Migration Time [s]
26	2,415	3.06	1.9		102.96
27	2,676	3.65	2.1		103.78
28	3,006	2.91	1.5		104.81
29	4,058	4.68	1.7		106.14
30	5,311	3.10	0.9		107.73
31	8,117	1.73	0.3		110.90
32	10,380	75.00	10.9	Upper Marker	113.00
33	13,913	0.00	0.0		116.28

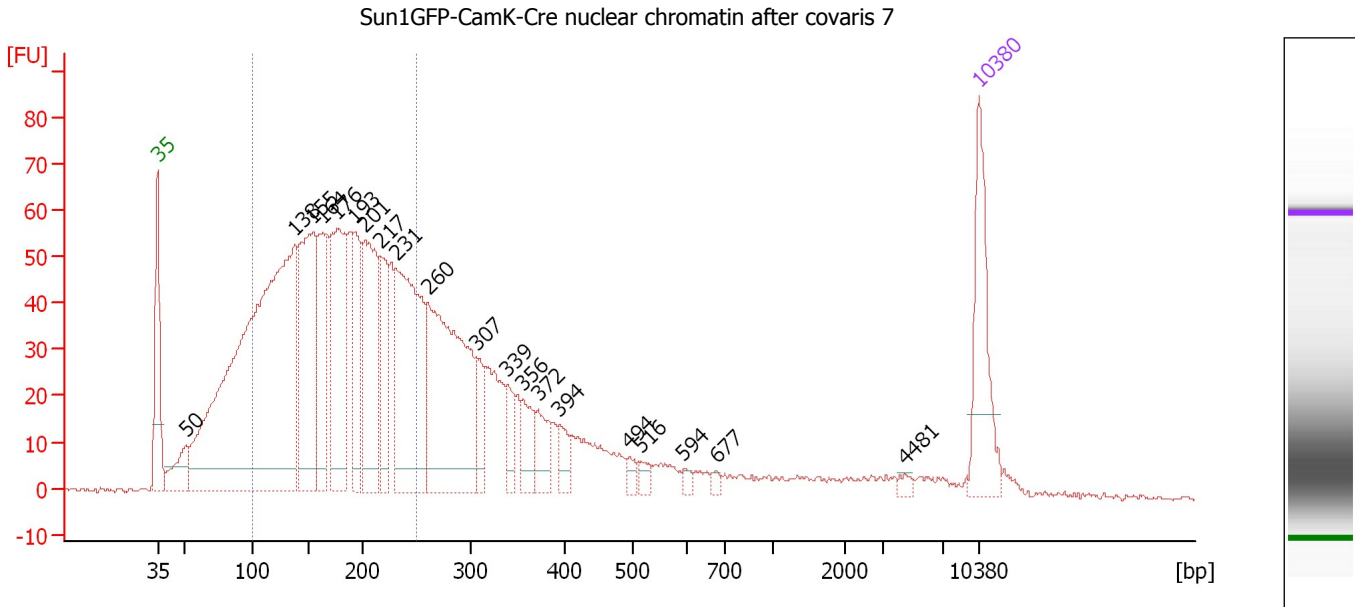
Region table for sample 5 : Sun1GFP-CamK-Cre nuclear chromatin after covaris 6

From [bp]	To [bp]	Average Size [bp]	Corr. Area	Molarity [pmol/l]	Co Conc. lor [pg/μl]	% of Total	Size distribution in CV [%]
100	250	177	1,316.2	14,246.1	1,536.34	51	23.5

Assay Class: High Sensitivity DNA Assay
 Data Path: C:\... bioanalyzer\2100 expert\data\2016-12-22\2016-12-22_001.xad

Created: 12/22/2016 10:27:26 AM
 Modified: 12/22/2016 11:01:52 AM

Electropherogram Summary Continued ...



Overall Results for sample 6 : Sun1GFP-CamK-Cre nuclear chromatin after covaris 7

Number of peaks found: 20 Corr. Area 1: 1,210.8
 Noise: 0.7

Peak table for sample 6 : Sun1GFP-CamK-Cre nuclear chromatin after covaris 7

Peak	Size [bp]	Conc. [pg/μl]	Molarity [pmol/l]	Observations	Aligned Migration Time [s]
1	35	125.00	5,411.3	Lower Marker	43.00
2	50	44.90	1,355.6		45.39
3	138	859.63	9,452.3		54.67
4	155	230.87	2,260.9		56.27
5	164	129.08	1,195.6		57.10
6	176	204.85	1,760.3		58.30
7	193	88.76	697.0		59.85
8	201	178.31	1,342.2		60.63
9	217	81.58	570.8		62.03
10	231	249.72	1,640.1		63.33
11	260	299.08	1,742.1		66.02
12	307	36.77	181.6		70.22
13	339	25.01	111.8		72.81
14	356	34.42	146.6		74.16
15	372	34.11	139.0		75.46
16	394	18.86	72.5		77.27
17	494	8.85	27.1		83.13
18	516	10.06	29.5		84.22
19	594	5.37	13.7		87.85
20	677	4.54	10.2		90.60
21	4,481	4.78	1.6		106.67
22	10,380	75.00	10.9	Upper Marker	113.00

Assay Class: High Sensitivity DNA Assay
Data Path: C:\... bioanalyzer\2100 expert\data\2016-12-22\2016-12-22_001.xad

Created: 12/22/2016 10:27:26 AM
Modified: 12/22/2016 11:01:52 AM

Electropherogram Summary Continued ...

... Region table for sample 6 :

Sun1GFP-CamK-Cre nuclear chromatin after covaris 7

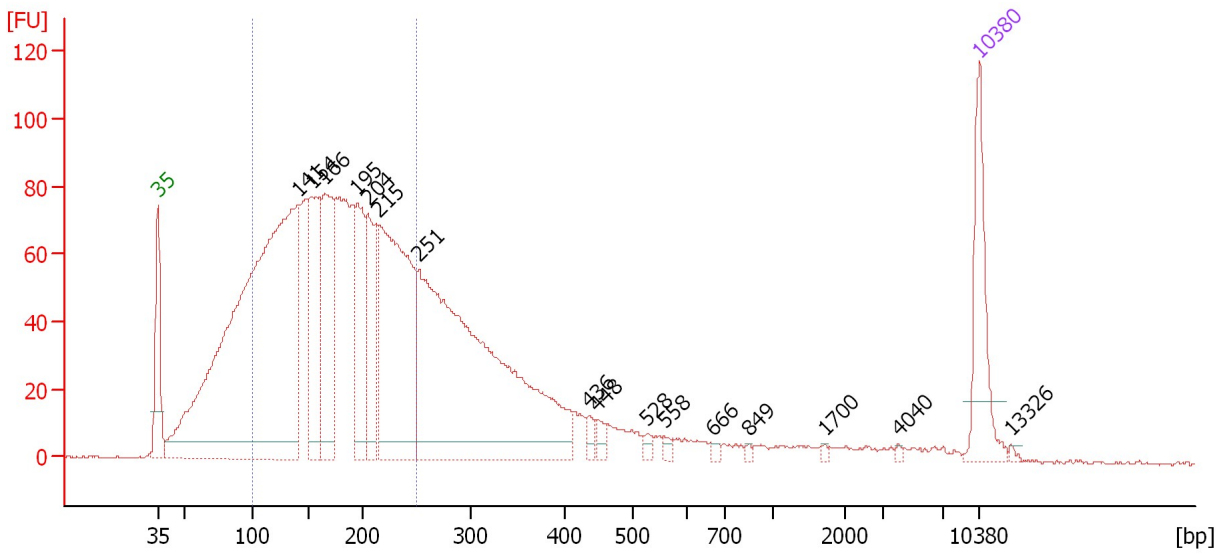
From [bp]	To [bp]	Average Size [bp]	Corr. Area	Molarity [pmol/l]	Co Conc. lor [pg/μl]	% of Total	Size distribution in CV [%]
100	250	175	1,210.8	17,101.9	1,819.74	56	23.8

Assay Class: High Sensitivity DNA Assay
 Data Path: C:\... bioanalyzer\2100 expert\data\2016-12-22\2016-12-22_001.xad

Created: 12/22/2016 10:27:26 AM
 Modified: 12/22/2016 11:01:52 AM

Electropherogram Summary Continued ...

Sun1GFP-CamK-Cre nuclear chromatin after covaris 8



Overall Results for sample 7 : Sun1GFP-CamK-Cre nuclear chromatin after covaris 8

Number of peaks found: 16 Corr. Area 1: 1,663.4
 Noise: 0.3

Peak table for sample 7 : Sun1GFP-CamK-Cre nuclear chromatin after covaris 8

Peak	Size [bp]	Conc. [pg/μl]	Molarity [pmol/l]	Observations	Aligned Migration Time [s]
1	35	125.00	5,411.3	Lower Marker	43.00
2	141	1,080.40	11,601.9		54.98
3	154	161.29	1,588.6		56.19
4	166	198.29	1,814.1		57.29
5	195	134.48	1,045.9		60.03
6	204	117.81	873.1		60.92
7	215	367.64	2,593.5		61.87
8	251	710.52	4,281.0		65.23
9	436	9.92	34.5		79.79
10	448	11.61	39.3		80.47
11	528	5.85	16.8		84.78
12	558	5.33	14.5		86.20
13	666	4.14	9.4		90.24
14	849	2.75	4.9		93.40
15	1,700	2.18	1.9		99.81
16	4,040	2.00	0.7		106.12
17	10,380	75.00	10.9	Upper Marker	113.00
18	13,326	0.00	0.0		115.73

Region table for sample 7 : Sun1GFP-CamK-Cre nuclear chromatin after covaris 8

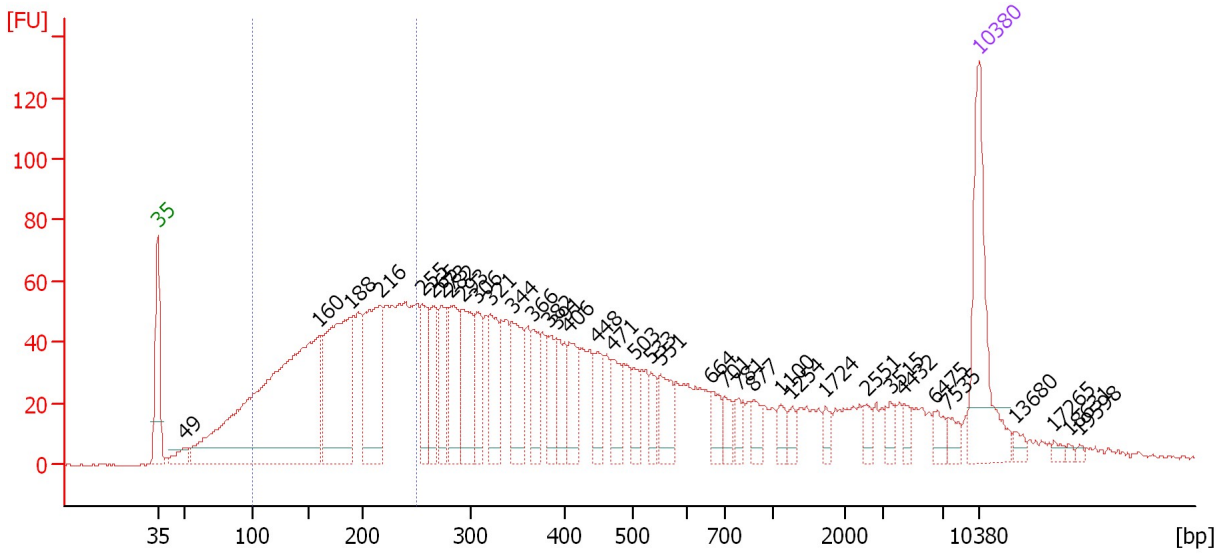
From [bp]	To [bp]	Average Size [bp]	Corr. Area	Molarity [pmol/l]	Co Conc. [pg/μl]	% of Total	Size distribution in CV [%]
100	250	173	1,663.4	19,354.0	2,042.60	58	24.0

Assay Class: High Sensitivity DNA Assay
 Data Path: C:\... bioanalyzer\2100 expert\data\2016-12-22\2016-12-22_001.xad

Created: 12/22/2016 10:27:26 AM
 Modified: 12/22/2016 11:01:52 AM

Electropherogram Summary Continued ...

Sun1GFP-CamK-Cre nuclear chromatin after covaris 3



Overall Results for sample 8 : Sun1GFP-CamK-Cre nuclear chromatin after covaris 3

Number of peaks found: 37 Corr. Area 1: 997.1
 Noise: 0.4

Peak table for sample 8 : Sun1GFP-CamK-Cre nuclear chromatin after covaris 3

Peak	Size [bp]	Conc. [pg/μl]	Molarity [pmol/l]	Observations	Aligned Migration Time [s]
1	35	125.00	5,411.3	Lower Marker	43.00
2	49	15.47	474.6		45.27
3	160	428.91	4,059.0		56.78
4	188	179.42	1,448.0		59.37
5	216	124.40	873.8		61.95
6	255	43.95	261.3		65.54
7	265	42.61	243.4		66.49
8	273	48.38	268.2		67.23
9	282	59.80	321.4		68.02
10	293	65.69	339.8		69.03
11	306	39.92	197.5		70.19
12	321	45.59	215.4		71.35
13	344	53.16	234.4		73.20
14	366	28.48	117.9		74.99
15	382	28.36	112.6		76.26
16	391	30.53	118.2		77.05
17	406	32.75	122.1		78.11
18	448	26.08	88.2		80.48
19	471	28.11	90.5		81.80
20	503	20.01	60.3		83.60
21	533	15.60	44.3		85.02
22	551	28.95	79.6		85.87
23	664	16.27	37.1		90.19
24	701	12.84	27.7		91.36
25	781	10.50	20.4		92.46

Assay Class: High Sensitivity DNA Assay
 Data Path: C:\... bioanalyzer\2100 expert\data\2016-12-22\2016-12-22_001.xad

Created: 12/22/2016 10:27:26 AM
 Modified: 12/22/2016 11:01:52 AM

Electropherogram Summary Continued ...

... Peak table for sample 8 : Sun1GFP-CamK-Cre nuclear chromatin after covaris 3

Peak	Size [bp]	Conc. [pg/μl]	Molarity [pmol/l]	Observations	Aligned Migration Time [s]
26	877	12.21	21.1		93.78
27	1,100	10.20	14.0		96.11
28	1,254	7.49	9.1		97.06
29	1,724	7.26	6.4		99.96
30	2,551	7.29	4.3		103.39
31	3,515	7.36	3.2		105.45
32	4,432	6.26	2.1		106.61
33	6,475	8.94	2.1		109.20
34	7,535	7.94	1.6		110.36
35	10,380	75.00	10.9	Upper Marker	113.00
36	13,680	0.00	0.0		116.06
37	17,265	0.00	0.0		119.39
38	18,631	0.00	0.0		120.65
39	19,598	0.00	0.0		121.55

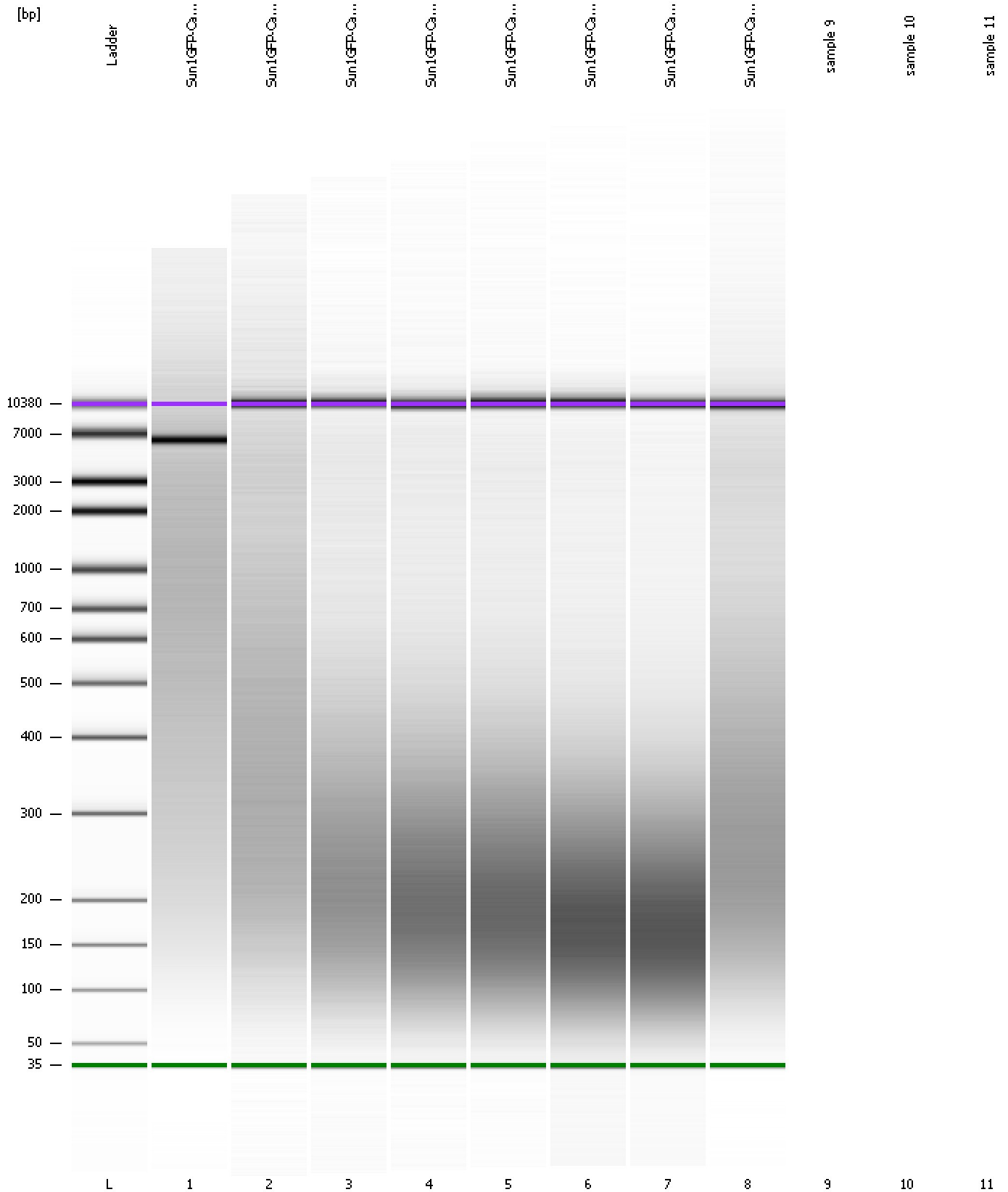
Region table for sample 8 : Sun1GFP-CamK-Cre nuclear chromatin after covaris 3

From [bp]	To [bp]	Average Size [bp]	Corr. Area	Molarity [pmol/l]	Co Conc. lor [pg/μl]	% of Total	Size distribution in CV [%]
100	250	183	997.1	8,214.0	918.22	34	22.6

Assay Class: High Sensitivity DNA Assay
Data Path: C:\... bioanalyzer\2100 expert\data\2016-12-22\2016-12-22_001.xad

Created: 12/22/2016 10:27:26 AM
Modified: 12/22/2016 11:01:52 AM

Gel Image



Assay Class: High Sensitivity DNA Assay
Data Path: C:\... bioanalyzer\2100 expert\data\2016-12-22\2016-12-22_001.xad

Created: 12/22/2016 10:27:26 AM
Modified: 12/22/2016 11:01:52 AM

Invalid Samples

Sample 9 has not been run, no results available.

Sample 10 has not been run, no results available.

Sample 11 has not been run, no results available.

Assay Class: High Sensitivity DNA Assay
 Data Path: C:\... bioanalyzer\2100 expert\data\2016-12-22\2016-12-22_001.xad

Created: 12/22/2016 10:27:26 AM
 Modified: 12/22/2016 11:01:52 AM

Run Logbook

Description	Number	Source	Category	Sub Category	Time	Time Zone	User	Host
Run ended on port 1 (Number of wells acquired: 9)		Instrument	Run		12/22/2016 11:00:12 AM	(GMT --08:00) Pacific Standard Time	UC Davis	D8XSMGH1
Run started on port 1 (File: C:\Program Files\Agilent\2100 bioanalyzer\2100 expert\data\2016-12-22\2016-12-22_001.xad)		Instrument	Run		12/22/2016 10:27:32 AM	(GMT --08:00) Pacific Standard Time	UC Davis	D8XSMGH1
Product Number : G2938B		Instrument	Run		12/22/2016 10:27:32 AM	(GMT --08:00) Pacific Standard Time	UC Davis	D8XSMGH1
Name :		Instrument	Run		12/22/2016 10:27:32 AM	(GMT --08:00) Pacific Standard Time	UC Davis	D8XSMGH1
Vendor : Agilent Technologies		Instrument	Run		12/22/2016 10:27:32 AM	(GMT --08:00) Pacific Standard Time	UC Davis	D8XSMGH1
Serial# : DE13701086		Instrument	Run		12/22/2016 10:27:32 AM	(GMT --08:00) Pacific Standard Time	UC Davis	D8XSMGH1
Firmware : C.01.069		Instrument	Run		12/22/2016 10:27:32 AM	(GMT --08:00) Pacific Standard Time	UC Davis	D8XSMGH1
Cartridge : Electrode		Instrument	Run		12/22/2016 10:27:32 AM	(GMT --08:00) Pacific Standard Time	UC Davis	D8XSMGH1