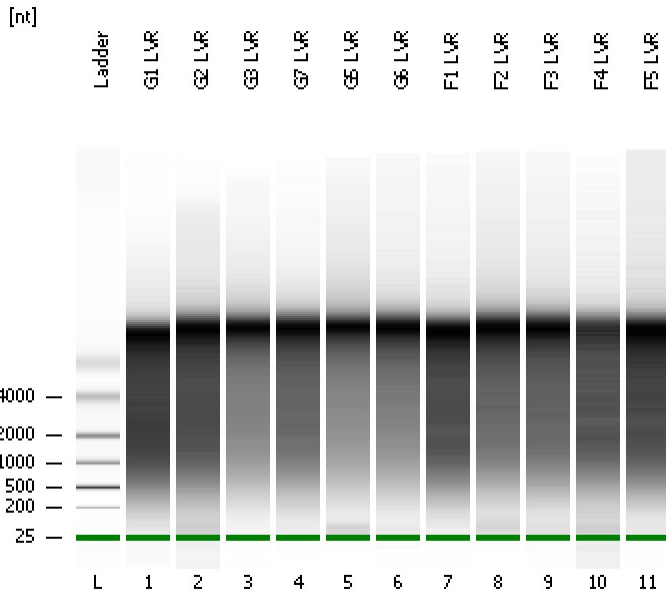


Assay Class: mRNA Pico
Data Path: C:\... bioanalyzer\2100 expert\data\2017-04-24\2017-04-24_003.xad

Created: 4/24/2017 1:35:54 PM
Modified: 4/24/2017 2:01:44 PM

Electrophoresis File Run Summary



Instrument Information:

Instrument Name: DE13701086 Firmware: C.01.069
Serial#: DE13701086 Type: G2938B

Assay Information:

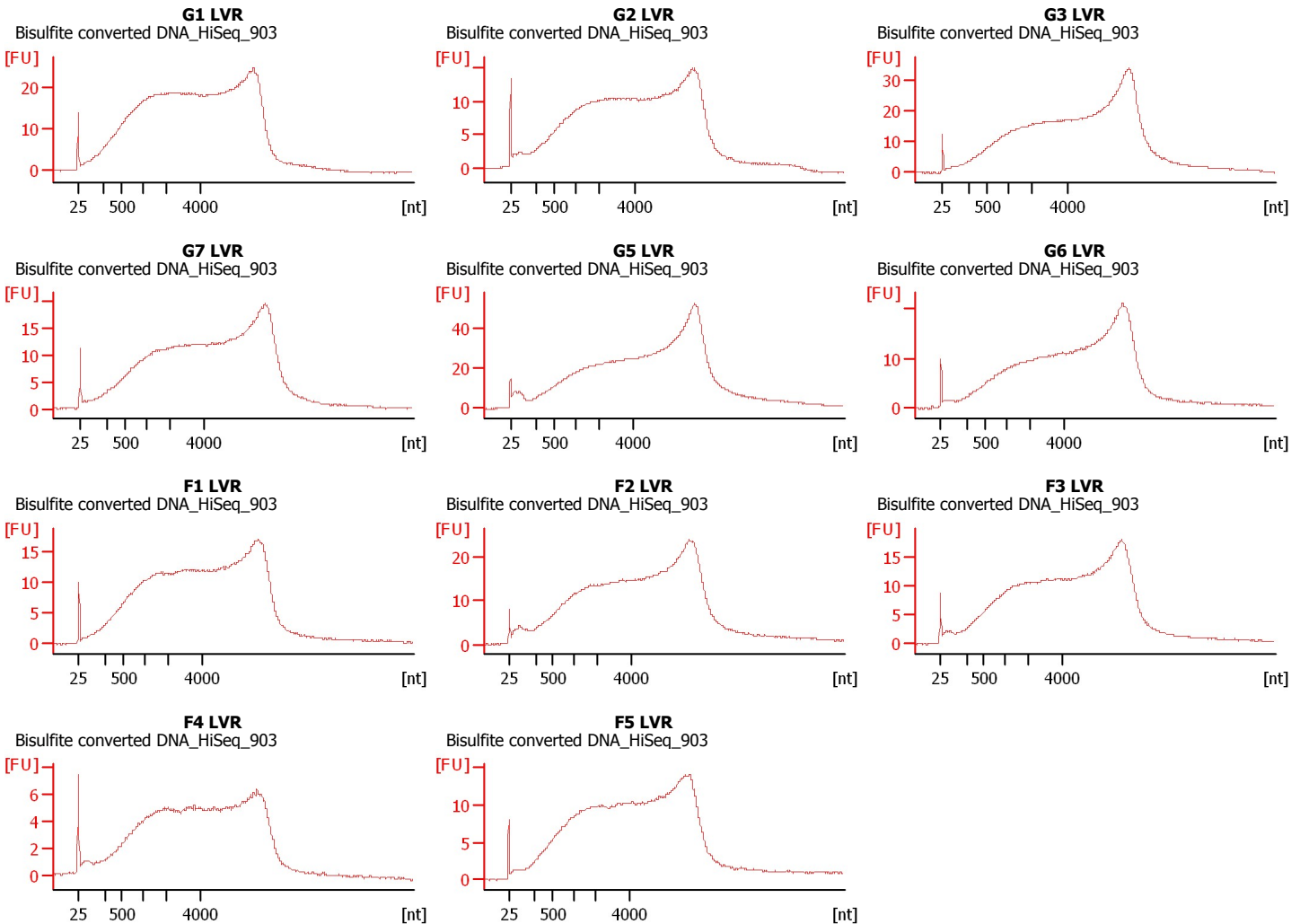
Assay Origin Path: C:\Program Files\Agilent\2100 bioanalyzer\2100 expert\assays\RNA\mRNA Pico Series II.xsy

Assay Class: mRNA Pico
Version: 2.6
Assay Comments: mRNA Analysis pg sensitivity

© Copyright 2003 - 2009 Agilent Technologies, Inc.

Chip Information:

Chip Lot #:
Reagent Kit Lot #:
Chip Comments:



Assay Class: mRNA Pico
Data Path: C:\... bioanalyzer\2100 expert\data\2017-04-24\2017-04-24_003.xad

Created: 4/24/2017 1:35:54 PM
Modified: 4/24/2017 2:01:44 PM

Electrophoresis File Run Summary (Chip Summary)

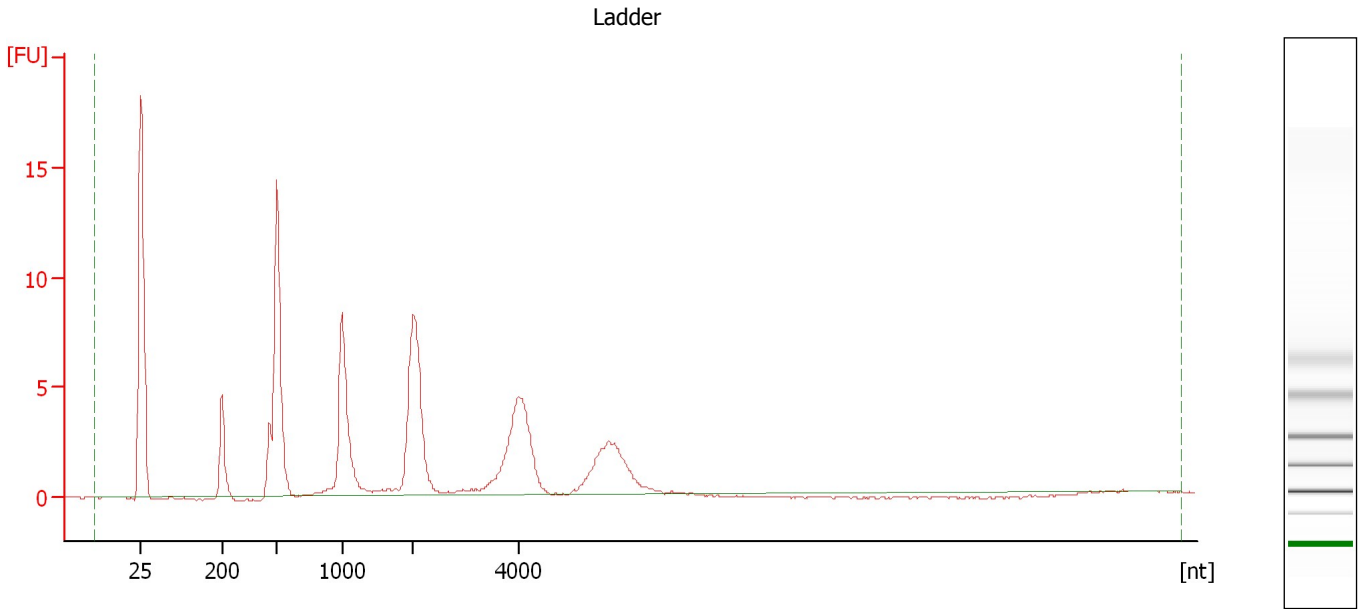
Sample Name	Sample Comment	Status	Result Label	Result Color
G1 LVR	Bisulfite converted DNA_HiSeq_903	✓		
G2 LVR	Bisulfite converted DNA_HiSeq_903	✓		
G3 LVR	Bisulfite converted DNA_HiSeq_903	✓		
G7 LVR	Bisulfite converted DNA_HiSeq_903	✓		
G5 LVR	Bisulfite converted DNA_HiSeq_903	✓		
G6 LVR	Bisulfite converted DNA_HiSeq_903	✓		
F1 LVR	Bisulfite converted DNA_HiSeq_903	✓		
F2 LVR	Bisulfite converted DNA_HiSeq_903	✓		
F3 LVR	Bisulfite converted DNA_HiSeq_903	✓		
F4 LVR	Bisulfite converted DNA_HiSeq_903	✓		
F5 LVR	Bisulfite converted DNA_HiSeq_903	✓		
Ladder		✓		

Chip Lot #**Reagent Kit Lot #****Chip Comments :**

Assay Class: mRNA Pico
Data Path: C:\... bioanalyzer\2100 expert\data\2017-04-24\2017-04-24_003.xad

Created: 4/24/2017 1:35:54 PM
Modified: 4/24/2017 2:01:44 PM

Electropherogram Summary



Overall Results for Ladder

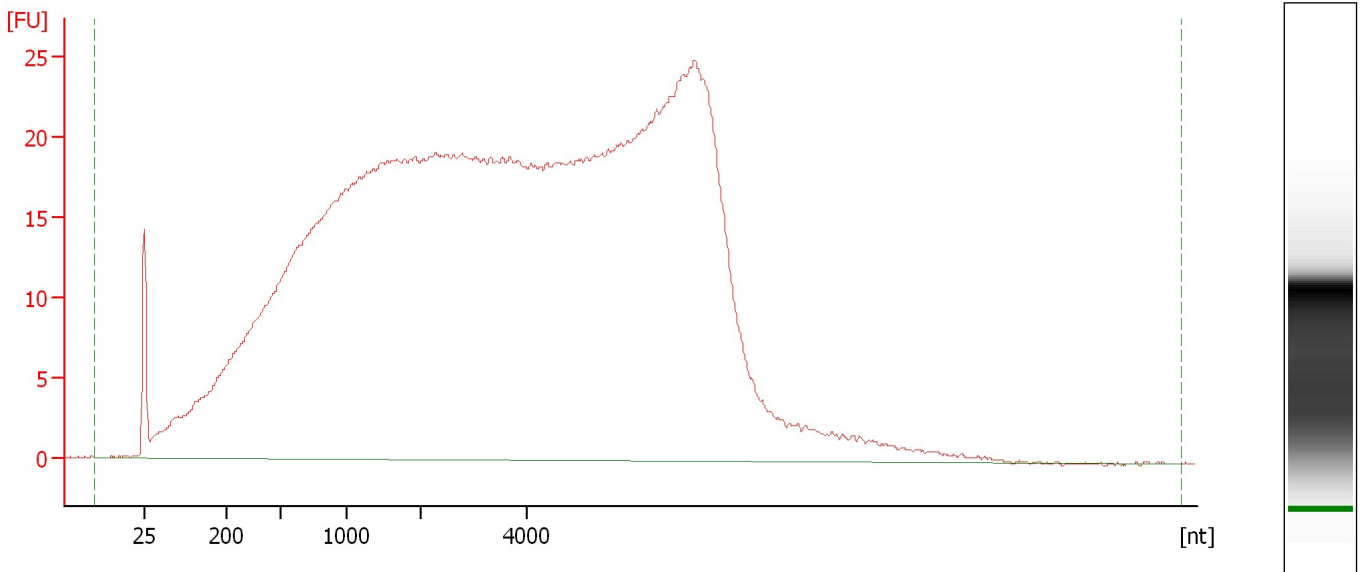
RNA Area: 105.1 RNA Concentration: 1,000 pg/μl

Assay Class: mRNA Pico
Data Path: C:\... bioanalyzer\2100 expert\data\2017-04-24\2017-04-24_003.xad

Created: 4/24/2017 1:35:54 PM
Modified: 4/24/2017 2:01:44 PM

Electropherogram Summary Continued ...

G1 LVR [Bisulfite converted DNA_HiSeq_903]



Overall Results for sample 1 : G1 LVR

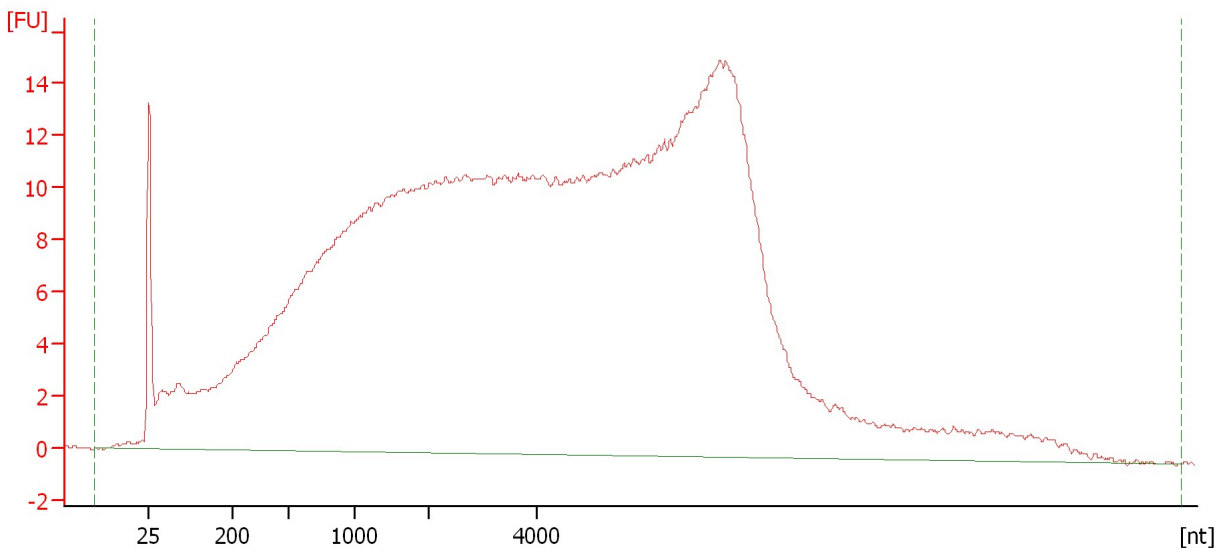
RNA Area: 1,511.9 rRNA Contamination: 0.0 %
RNA Concentration: 14,389 pg/μl

Assay Class: mRNA Pico
Data Path: C:\... bioanalyzer\2100 expert\data\2017-04-24\2017-04-24_003.xad

Created: 4/24/2017 1:35:54 PM
Modified: 4/24/2017 2:01:44 PM

Electropherogram Summary Continued ...

G2 LVR [Bisulfite converted DNA_HiSeq_903]



Overall Results for sample 2 : G2 LVR

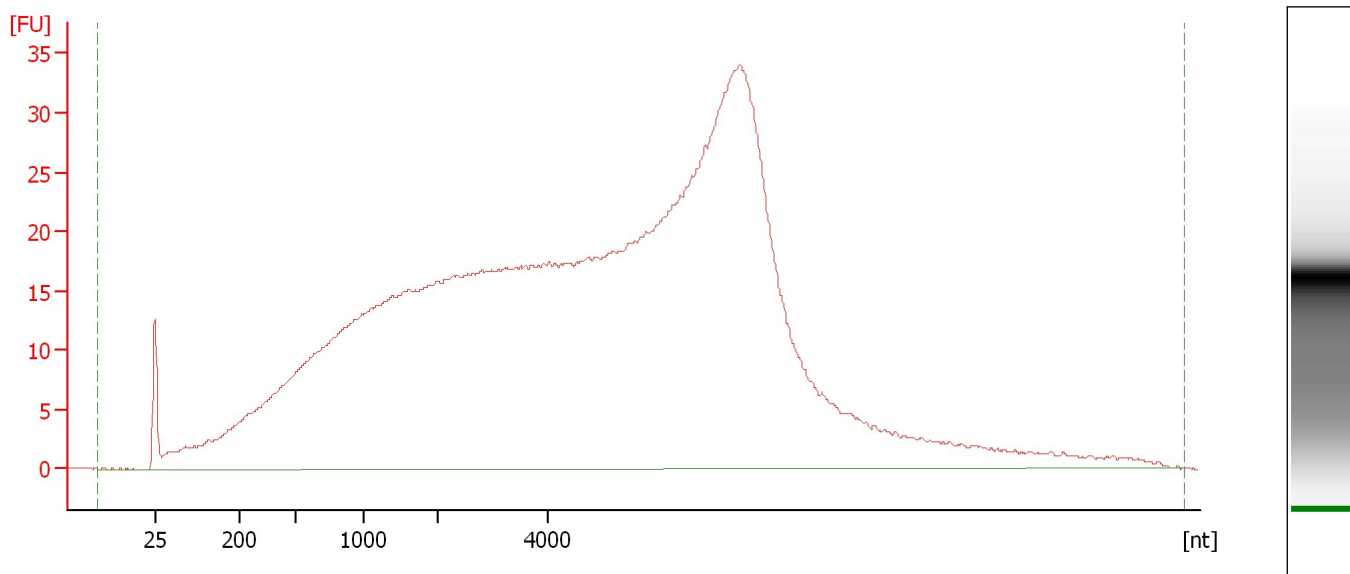
RNA Area: 904.4 rRNA Contamination: 0.0 %
RNA Concentration: 8,608 pg/μl

Assay Class: mRNA Pico
Data Path: C:\... bioanalyzer\2100 expert\data\2017-04-24\2017-04-24_003.xad

Created: 4/24/2017 1:35:54 PM
Modified: 4/24/2017 2:01:44 PM

Electropherogram Summary Continued ...

G3 LVR [Bisulfite converted DNA_HiSeq_903]



Overall Results for sample 3 : G3 LVR

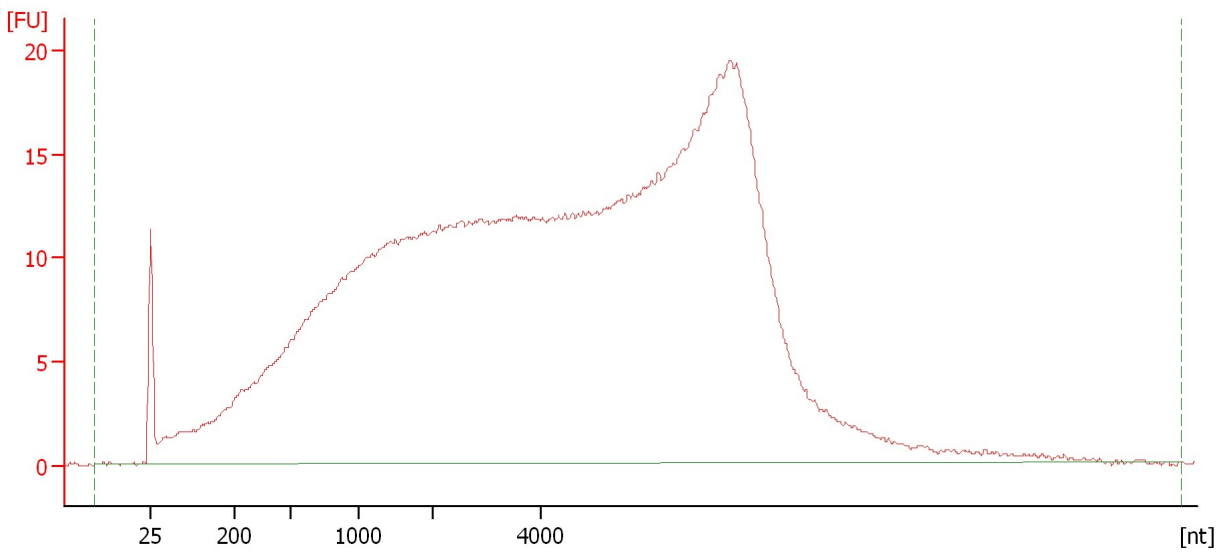
RNA Area:	1,485.2	rRNA Contamination:	0.0 %
RNA Concentration:	14,135 pg/μl		

Assay Class: mRNA Pico
Data Path: C:\... bioanalyzer\2100 expert\data\2017-04-24\2017-04-24_003.xad

Created: 4/24/2017 1:35:54 PM
Modified: 4/24/2017 2:01:44 PM

Electropherogram Summary Continued ...

G7 LVR [Bisulfite converted DNA_HiSeq_903]



Overall Results for sample 4 : G7 LVR

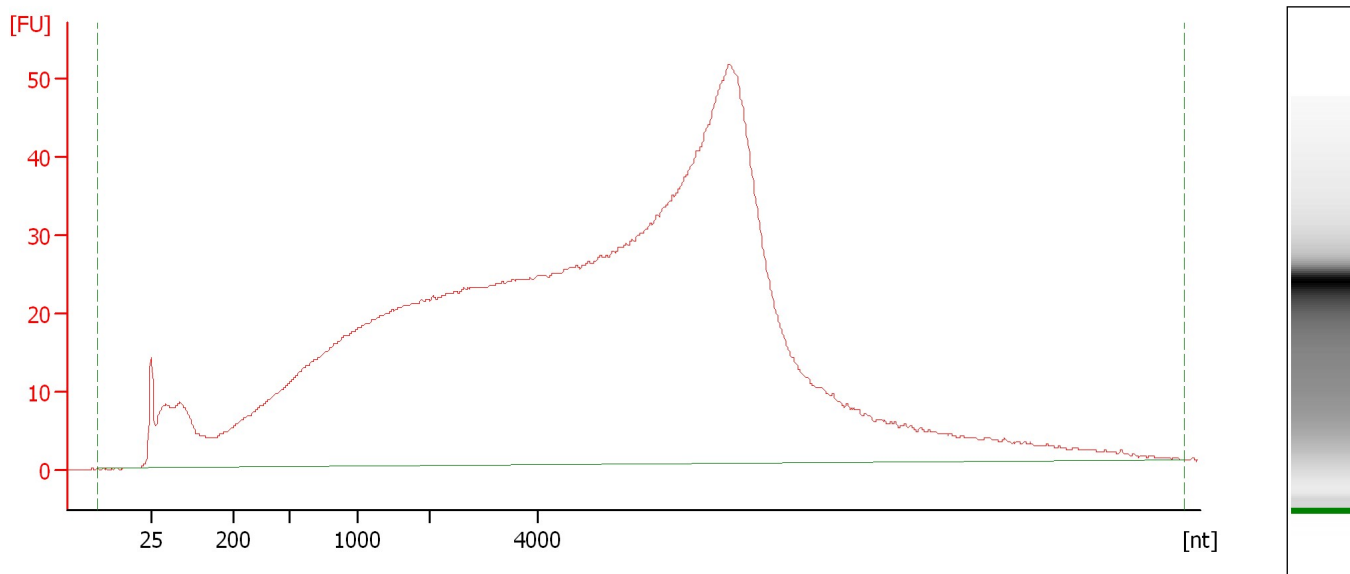
RNA Area: 987.8 rRNA Contamination: 0.0 %
RNA Concentration: 9,401 pg/μl

Assay Class: mRNA Pico
Data Path: C:\... bioanalyzer\2100 expert\data\2017-04-24\2017-04-24_003.xad

Created: 4/24/2017 1:35:54 PM
Modified: 4/24/2017 2:01:44 PM

Electropherogram Summary Continued ...

G5 LVR [Bisulfite converted DNA_HiSeq_903]



Overall Results for sample 5 : G5 LVR

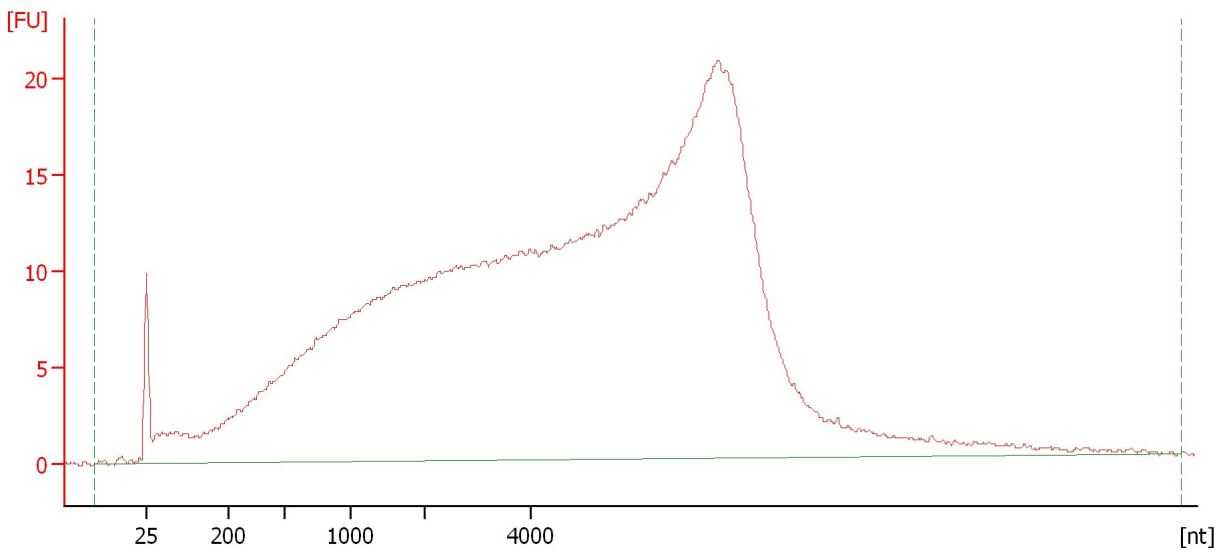
RNA Area:	2,199.6	rRNA Contamination:	0.0 %
RNA Concentration:	20,934 pg/μl		

Assay Class: mRNA Pico
Data Path: C:\... bioanalyzer\2100 expert\data\2017-04-24\2017-04-24_003.xad

Created: 4/24/2017 1:35:54 PM
Modified: 4/24/2017 2:01:44 PM

Electropherogram Summary Continued ...

G6 LVR [Bisulfite converted DNA_HiSeq_903]



Overall Results for sample 6 : G6 LVR

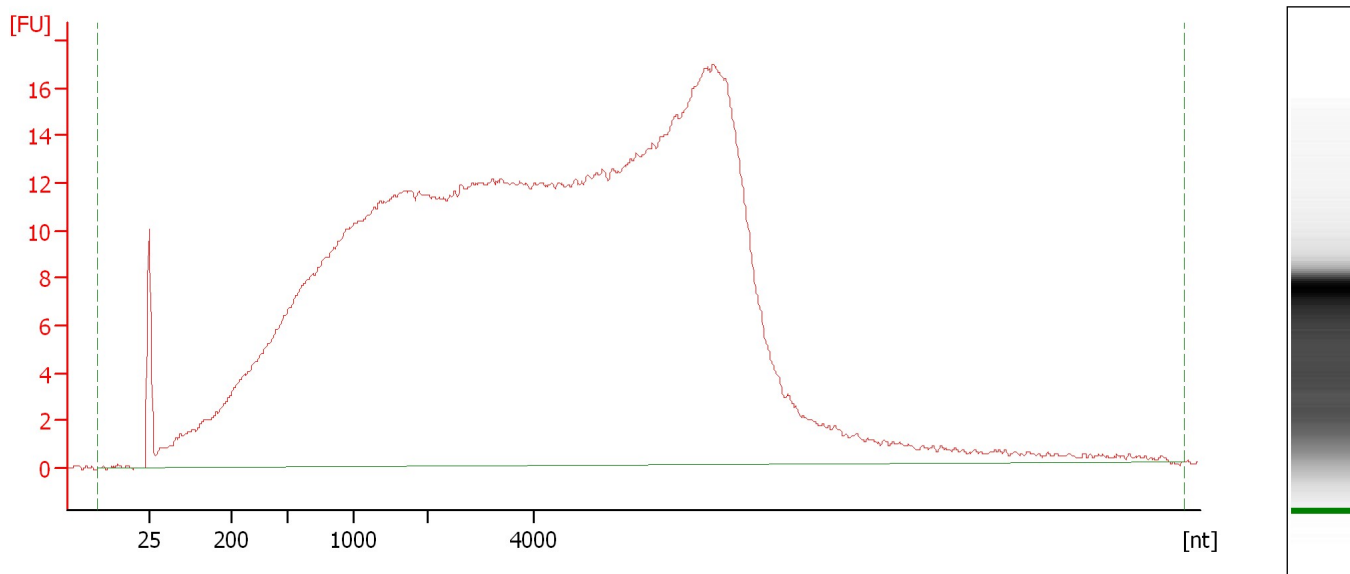
RNA Area:	907.3	rRNA Contamination:	0.0 %
RNA Concentration:	8,635 pg/μl		

Assay Class: mRNA Pico
Data Path: C:\... bioanalyzer\2100 expert\data\2017-04-24\2017-04-24_003.xad

Created: 4/24/2017 1:35:54 PM
Modified: 4/24/2017 2:01:44 PM

Electropherogram Summary Continued ...

F1 LVR [Bisulfite converted DNA_HiSeq_903]



Overall Results for sample 7 : F1 LVR

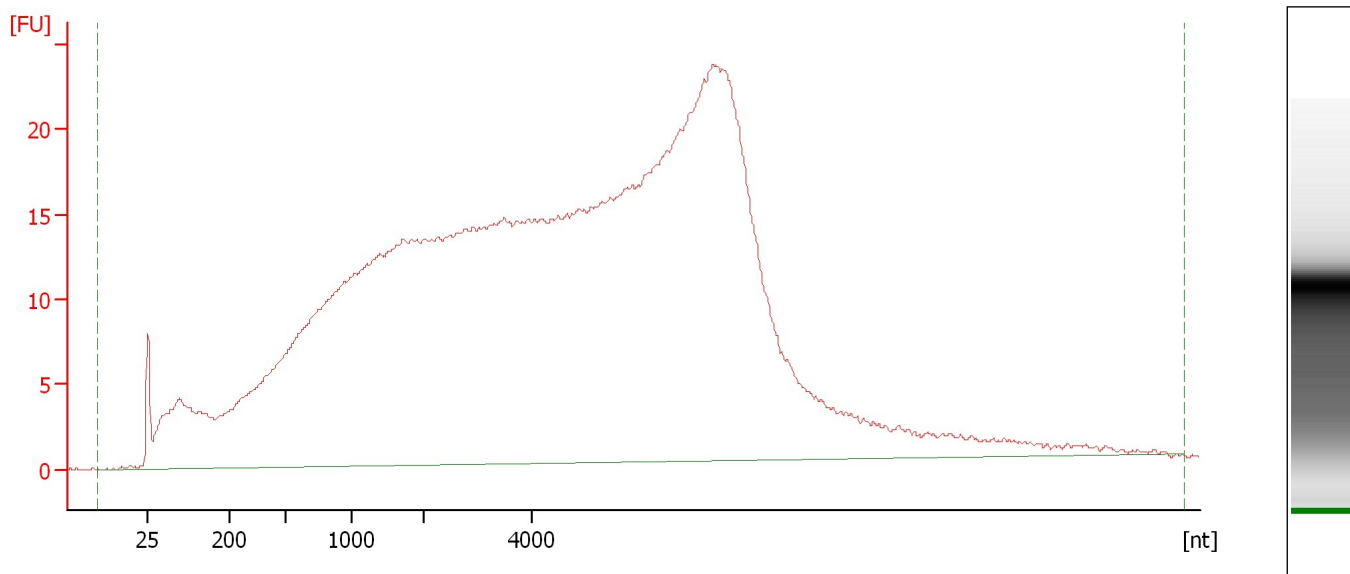
RNA Area: 968.4 rRNA Contamination: 0.0 %
RNA Concentration: 9,216 pg/μl

Assay Class: mRNA Pico
Data Path: C:\... bioanalyzer\2100 expert\data\2017-04-24\2017-04-24_003.xad

Created: 4/24/2017 1:35:54 PM
Modified: 4/24/2017 2:01:44 PM

Electropherogram Summary Continued ...

F2 LVR [Bisulfite converted DNA_HiSeq_903]



Overall Results for sample 8 : F2 LVR

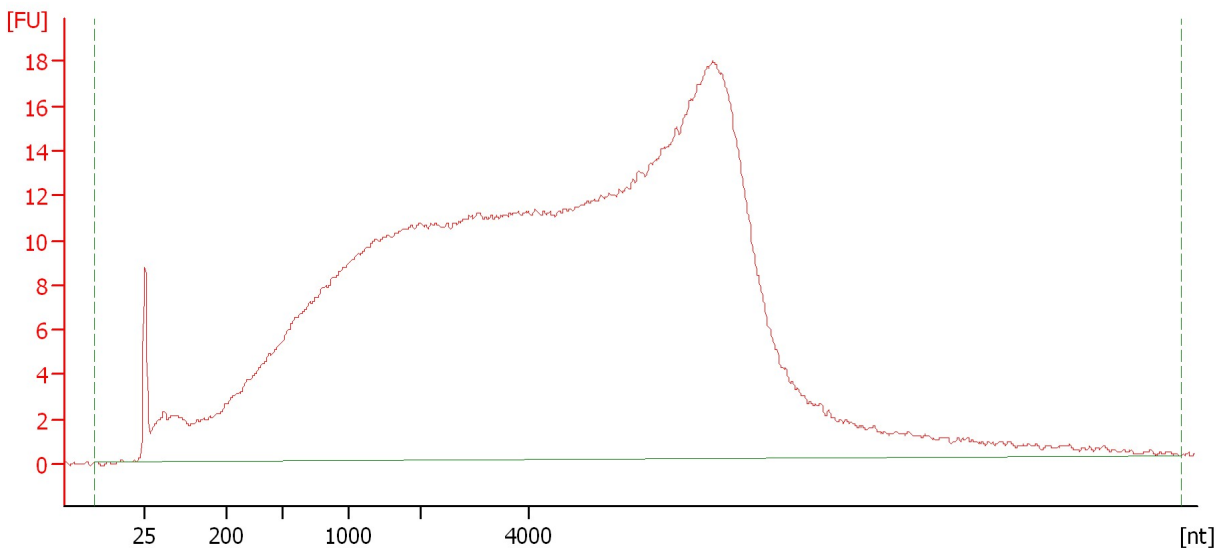
RNA Area:	1,227.2	rRNA Contamination:	0.0 %
RNA Concentration:	11,680 pg/μl		

Assay Class: mRNA Pico
Data Path: C:\... bioanalyzer\2100 expert\data\2017-04-24\2017-04-24_003.xad

Created: 4/24/2017 1:35:54 PM
Modified: 4/24/2017 2:01:44 PM

Electropherogram Summary Continued ...

F3 LVR [Bisulfite converted DNA_HiSeq_903]



Overall Results for sample 9 : F3 LVR

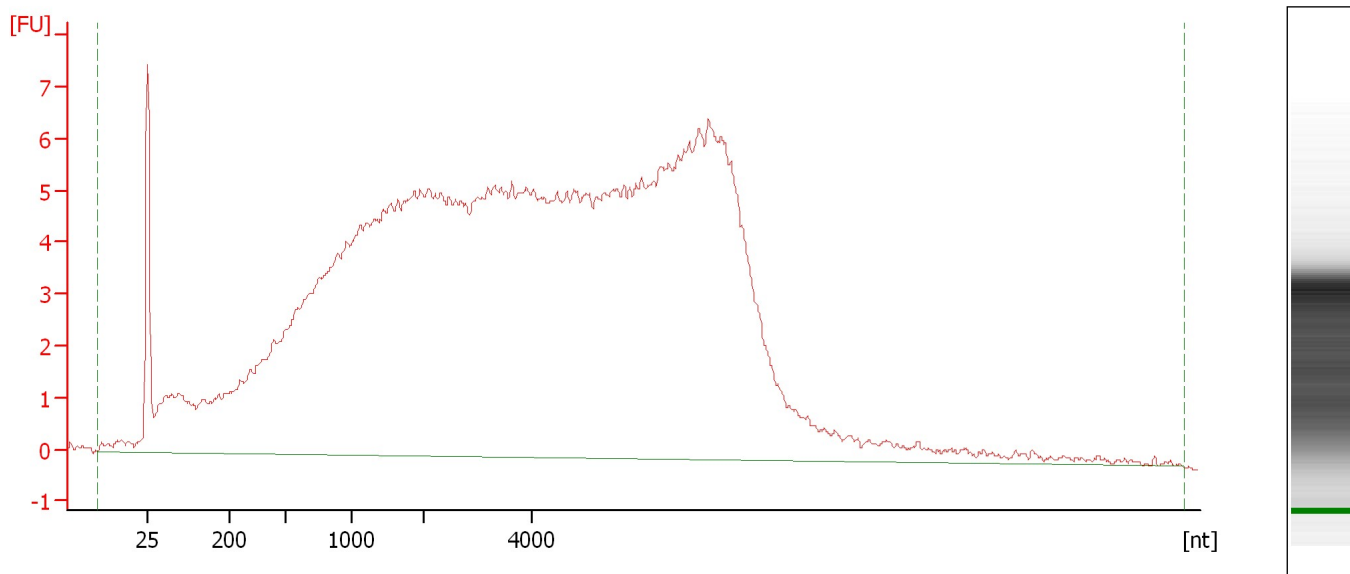
RNA Area: 931.7 rRNA Contamination: 0.0 %
RNA Concentration: 8,867 pg/μl

Assay Class: mRNA Pico
Data Path: C:\... bioanalyzer\2100 expert\data\2017-04-24\2017-04-24_003.xad

Created: 4/24/2017 1:35:54 PM
Modified: 4/24/2017 2:01:44 PM

Electropherogram Summary Continued ...

F4 LVR [Bisulfite converted DNA_HiSeq_903]



Overall Results for sample 10 : F4 LVR

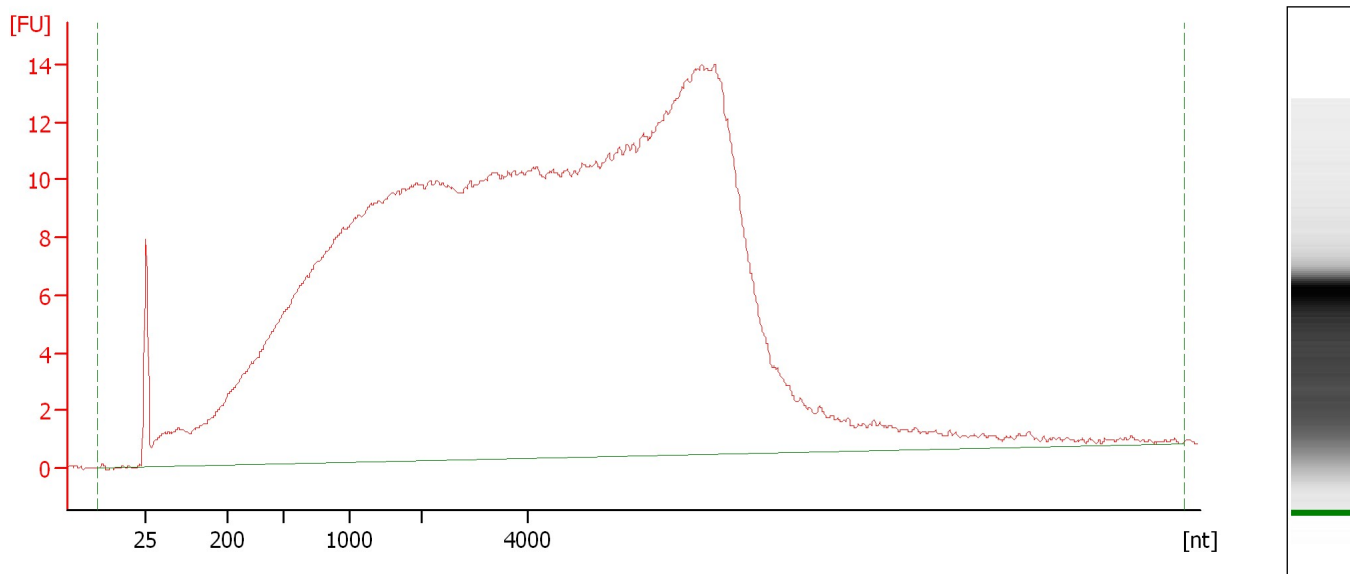
RNA Area: 409.3 rRNA Contamination: 0.0 %
RNA Concentration: 3,895 pg/μl

Assay Class: mRNA Pico
Data Path: C:\... bioanalyzer\2100 expert\data\2017-04-24\2017-04-24_003.xad

Created: 4/24/2017 1:35:54 PM
Modified: 4/24/2017 2:01:44 PM

Electropherogram Summary Continued ...

F5 LVR [Bisulfite converted DNA_HiSeq_903]



Overall Results for sample 11 : F5 LVR

RNA Area: 798.6 rRNA Contamination: 0.0 %
RNA Concentration: 7,600 pg/μl

Assay Class: mRNA Pico
Data Path: C:\... bioanalyzer\2100 expert\data\2017-04-24\2017-04-24_003.xad

Created: 4/24/2017 1:35:54 PM
Modified: 4/24/2017 2:01:44 PM

Gel Image

