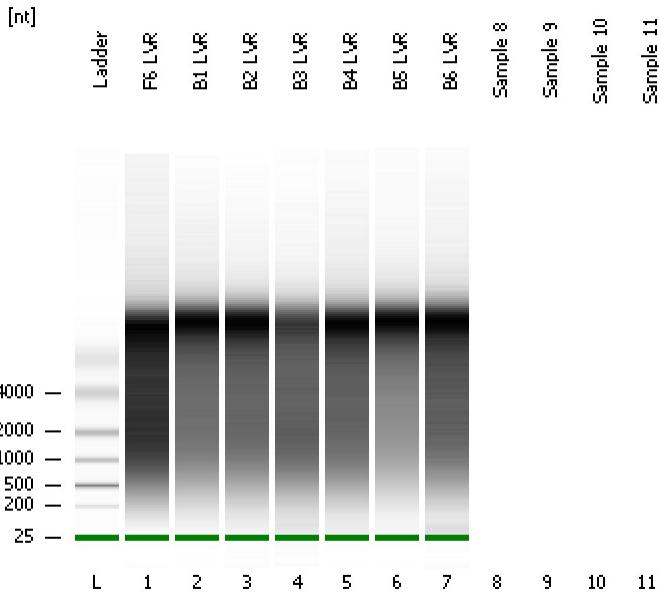


Assay Class: mRNA Pico
Data Path: C:\... bioanalyzer\2100 expert\data\2017-04-24\2017-04-24_004.xad

Created: 4/24/2017 2:27:09 PM
Modified: 4/24/2017 2:46:21 PM

Electrophoresis File Run Summary



Instrument Information:

Instrument Name: DE13701086 Firmware: C.01.069
Serial#: DE13701086 Type: G2938B

Assay Information:

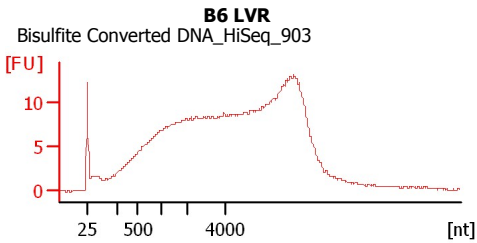
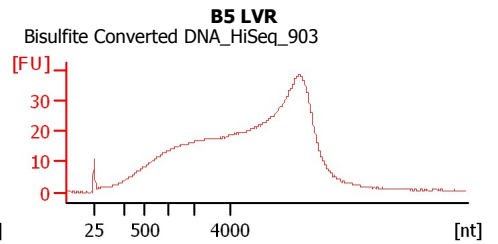
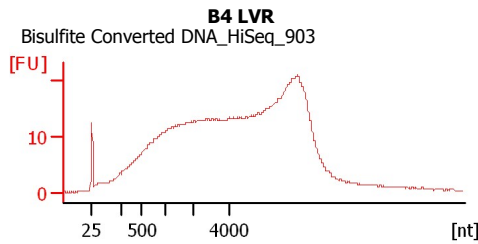
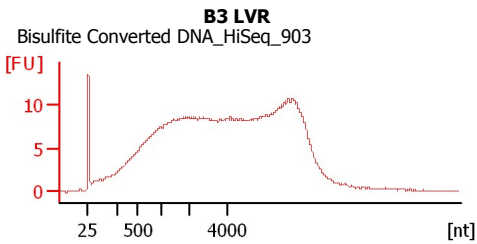
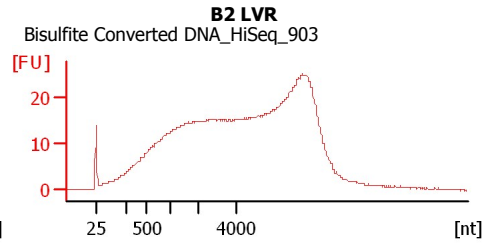
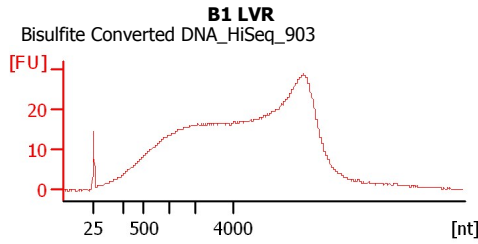
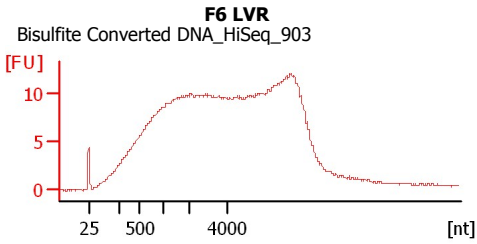
Assay Origin Path: C:\Program Files\Agilent\2100 bioanalyzer\2100 expert\assays\RNA\mRNA Pico Series II.xsy

Assay Class: mRNA Pico
Version: 2.6
Assay Comments: mRNA Analysis pg sensitivity

© Copyright 2003 - 2009 Agilent Technologies, Inc.

Chip Information:

Chip Lot #: Reagent Kit Lot #: Chip Comments:



Assay Class: mRNA Pico
Data Path: C:\... bioanalyzer\2100 expert\data\2017-04-24\2017-04-24_004.xad

Created: 4/24/2017 2:27:09 PM
Modified: 4/24/2017 2:46:21 PM

Electrophoresis File Run Summary (Chip Summary)

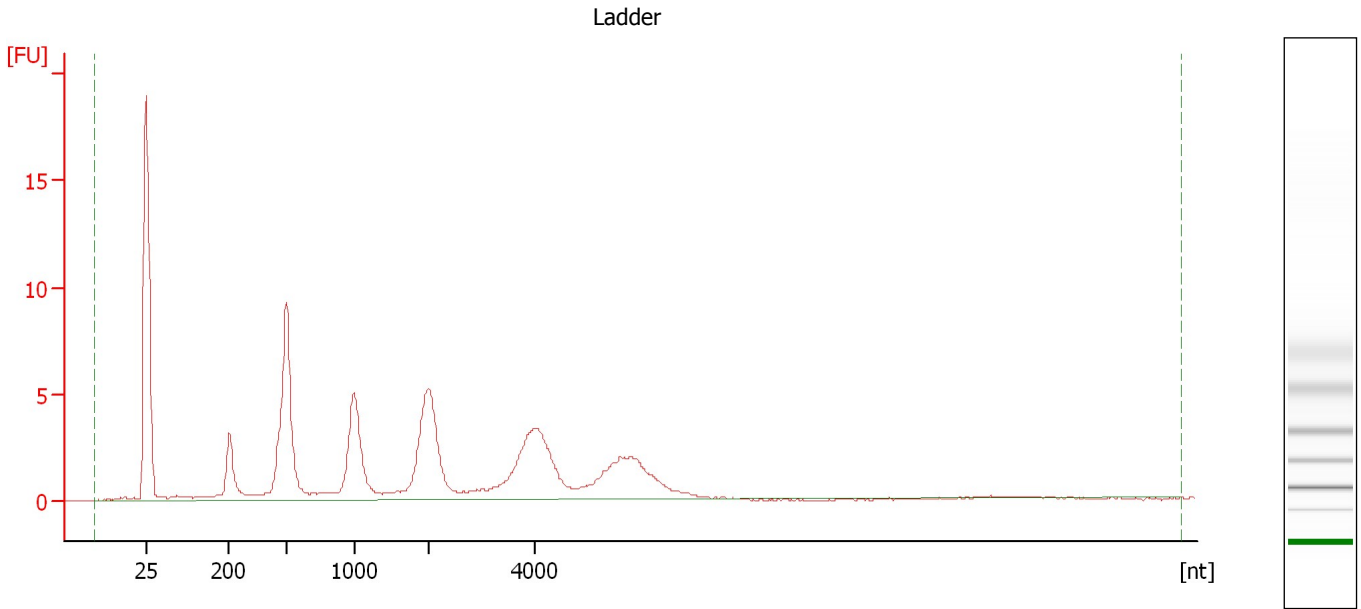
Sample Name	Sample Comment	Status	Result Label	Result Color
F6 LVR	Bisulfite Converted DNA_HiSeq_903	✓		
B1 LVR	Bisulfite Converted DNA_HiSeq_903	✓		
B2 LVR	Bisulfite Converted DNA_HiSeq_903	✓		
B3 LVR	Bisulfite Converted DNA_HiSeq_903	✓		
B4 LVR	Bisulfite Converted DNA_HiSeq_903	✓		
B5 LVR	Bisulfite Converted DNA_HiSeq_903	✓		
B6 LVR	Bisulfite Converted DNA_HiSeq_903	✓		
Sample 8	Bisulfite Converted DNA_HiSeq_903			
Sample 9				
Sample 10				
Sample 11				
Ladder		✓		

Chip Lot #**Reagent Kit Lot #****Chip Comments :**

Assay Class: mRNA Pico
Data Path: C:\... bioanalyzer\2100 expert\data\2017-04-24\2017-04-24_004.xad

Created: 4/24/2017 2:27:09 PM
Modified: 4/24/2017 2:46:21 PM

Electropherogram Summary



Overall Results for Ladder

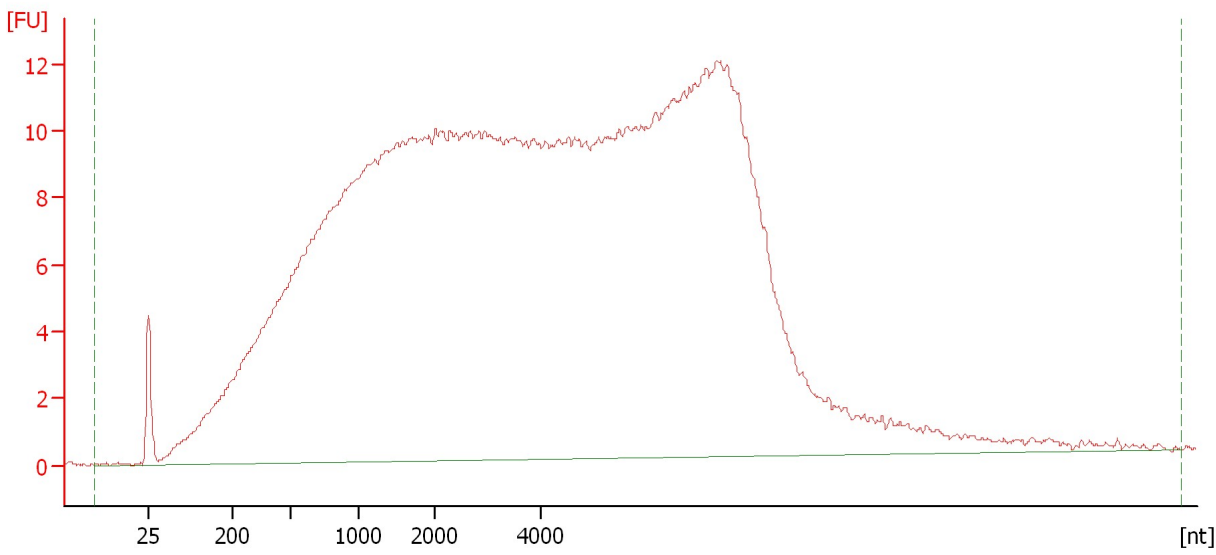
RNA Area: 115.5 RNA Concentration: 1,000 pg/μl

Assay Class: mRNA Pico
Data Path: C:\... bioanalyzer\2100 expert\data\2017-04-24\2017-04-24_004.xad

Created: 4/24/2017 2:27:09 PM
Modified: 4/24/2017 2:46:21 PM

Electropherogram Summary Continued ...

F6 LVR [Bisulfite Converted DNA_HiSeq_903]



Overall Results for sample 1 : F6 LVR

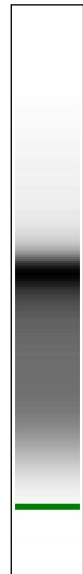
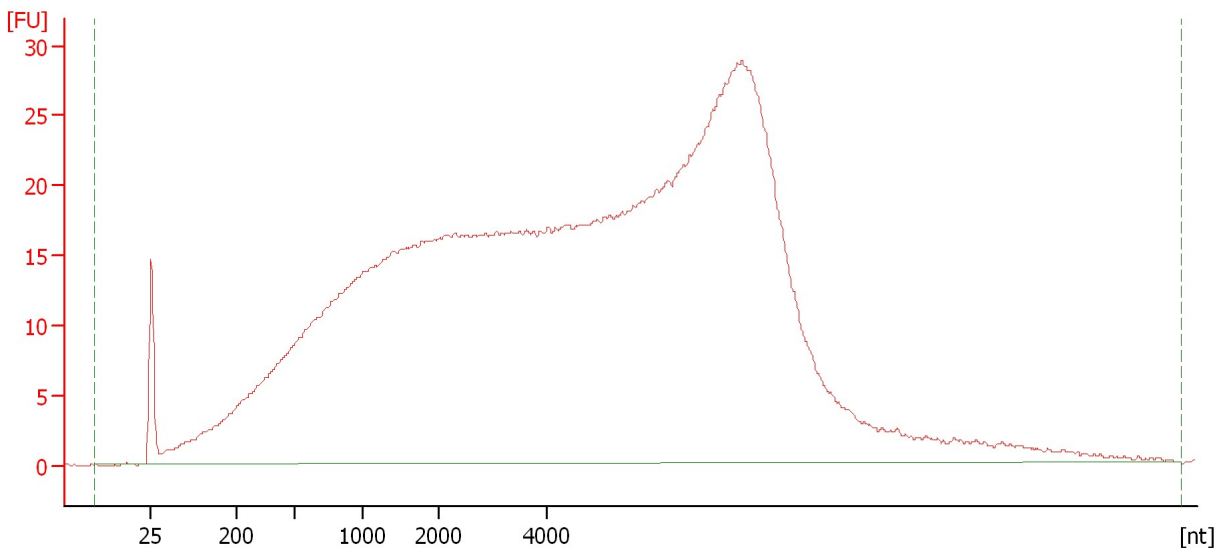
RNA Area: 778.7 rRNA Contamination: 0.0 %
RNA Concentration: 6,744 pg/μl

Assay Class: mRNA Pico
Data Path: C:\... bioanalyzer\2100 expert\data\2017-04-24\2017-04-24_004.xad

Created: 4/24/2017 2:27:09 PM
Modified: 4/24/2017 2:46:21 PM

Electropherogram Summary Continued ...

B1 LVR [Bisulfite Converted DNA_HiSeq_903]



Overall Results for sample 2 : B1 LVR

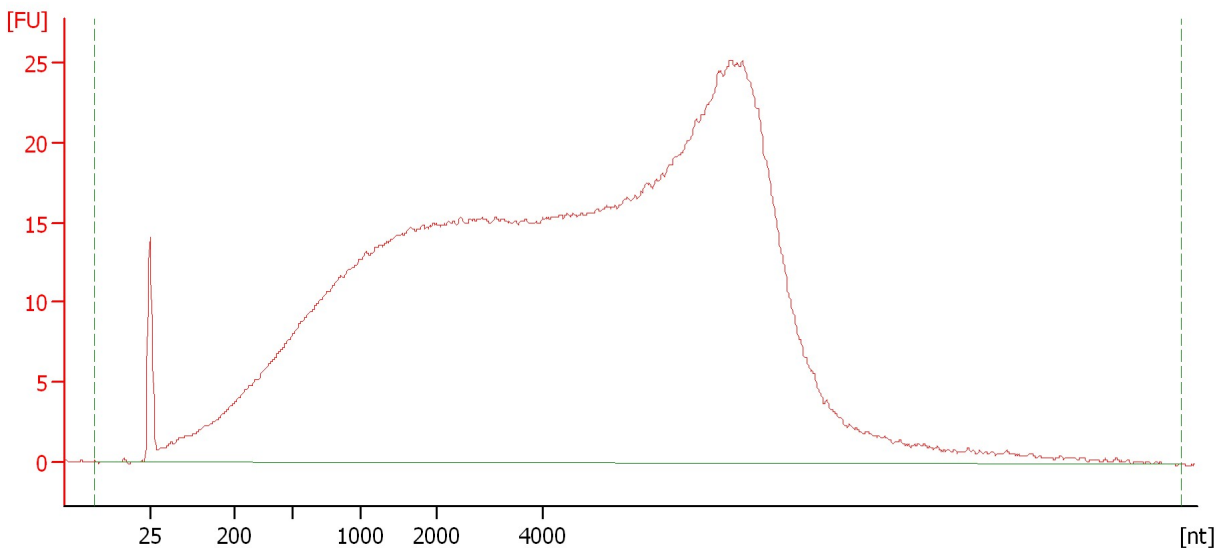
RNA Area:	1,441.8	rRNA Contamination:	0.0 %
RNA Concentration:	12,488 pg/μl		

Assay Class: mRNA Pico
Data Path: C:\... bioanalyzer\2100 expert\data\2017-04-24\2017-04-24_004.xad

Created: 4/24/2017 2:27:09 PM
Modified: 4/24/2017 2:46:21 PM

Electropherogram Summary Continued ...

B2 LVR [Bisulfite Converted DNA_HiSeq_903]



Overall Results for sample 3 : B2 LVR

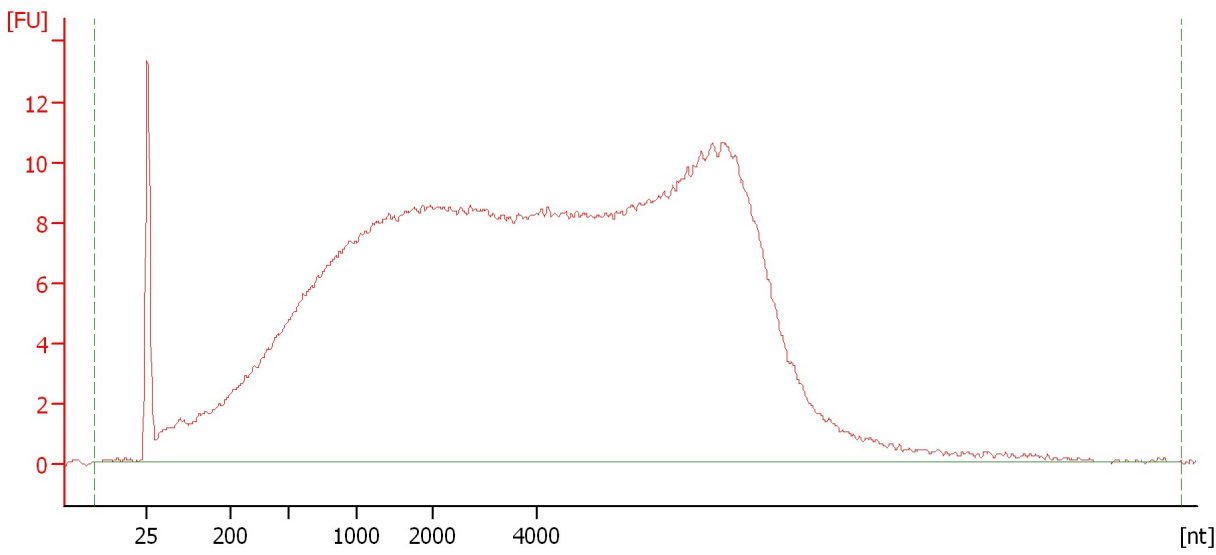
RNA Area:	1,308.0	rRNA Contamination:	0.0 %
RNA Concentration:	11,329 pg/μl		

Assay Class: mRNA Pico
Data Path: C:\... bioanalyzer\2100 expert\data\2017-04-24\2017-04-24_004.xad

Created: 4/24/2017 2:27:09 PM
Modified: 4/24/2017 2:46:21 PM

Electropherogram Summary Continued ...

B3 LVR [Bisulfite Converted DNA_HiSeq_903]



Overall Results for sample 4 : B3 LVR

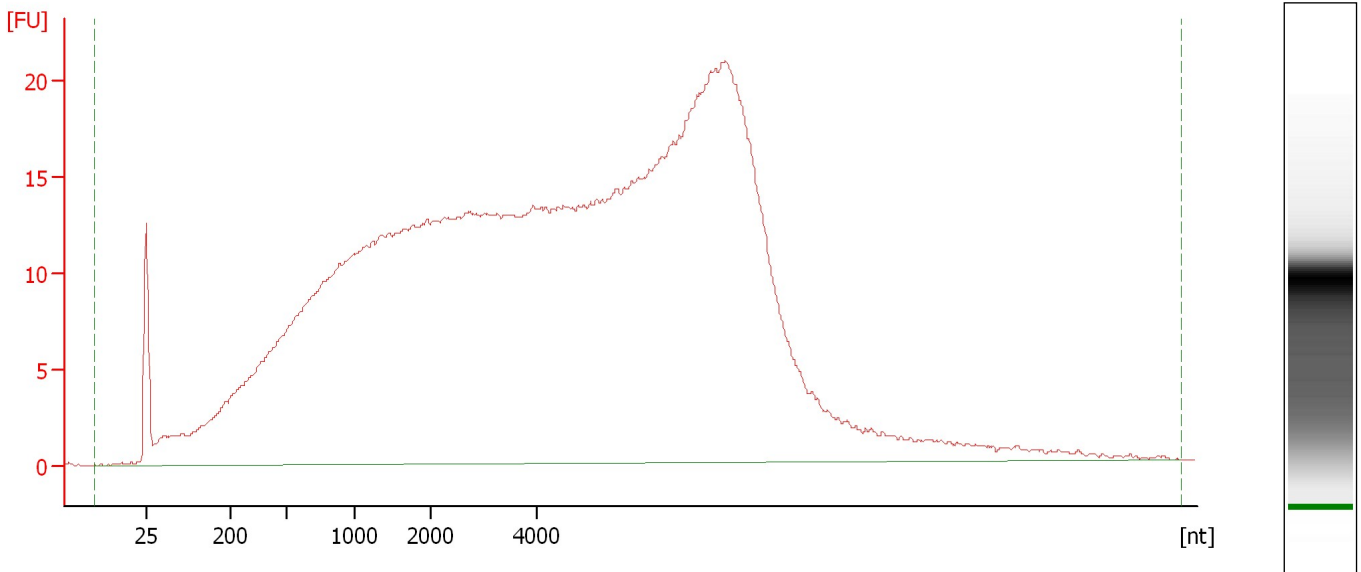
RNA Area: 688.1 rRNA Contamination: 0.0 %
RNA Concentration: 5,960 pg/μl

Assay Class: mRNA Pico
Data Path: C:\... bioanalyzer\2100 expert\data\2017-04-24\2017-04-24_004.xad

Created: 4/24/2017 2:27:09 PM
Modified: 4/24/2017 2:46:21 PM

Electropherogram Summary Continued ...

B4 LVR [Bisulfite Converted DNA_HiSeq_903]



Overall Results for sample 5 : B4 LVR

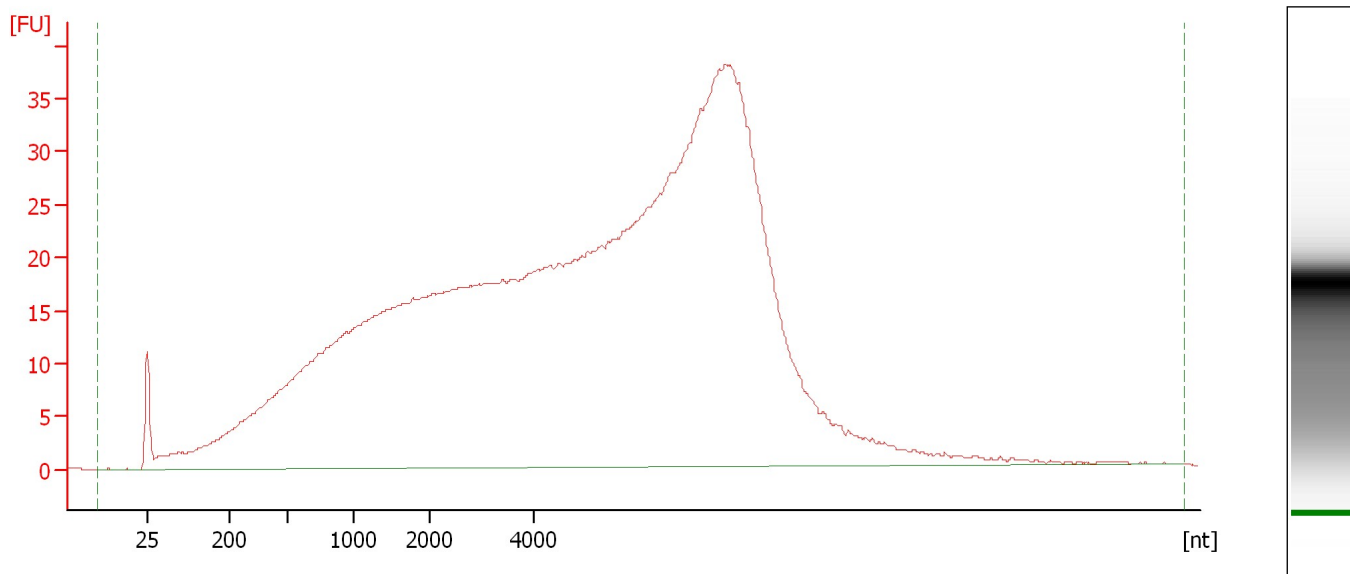
RNA Area: 1,117.6 rRNA Contamination: 0.0 %
RNA Concentration: 9,680 pg/μl

Assay Class: mRNA Pico
Data Path: C:\... bioanalyzer\2100 expert\data\2017-04-24\2017-04-24_004.xad

Created: 4/24/2017 2:27:09 PM
Modified: 4/24/2017 2:46:21 PM

Electropherogram Summary Continued ...

B5 LVR [Bisulfite Converted DNA_HiSeq_903]



Overall Results for sample 6 : B5 LVR

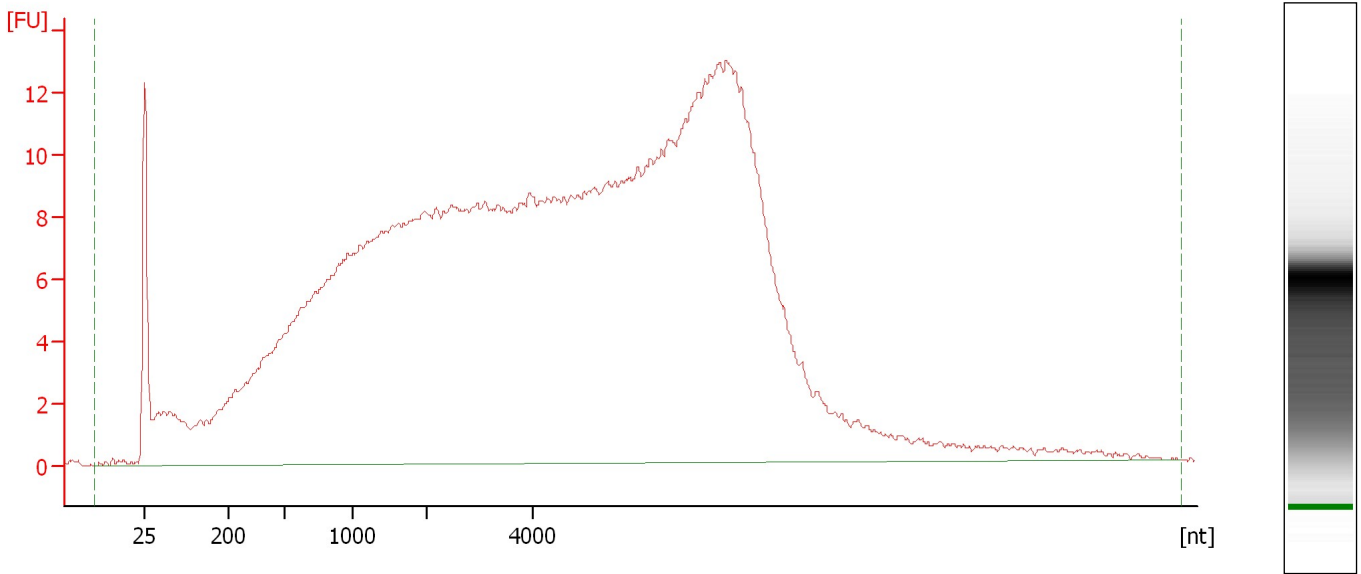
RNA Area: 1,589.6 rRNA Contamination: 0.0 %
RNA Concentration: 13,769 pg/μl

Assay Class: mRNA Pico
Data Path: C:\... bioanalyzer\2100 expert\data\2017-04-24\2017-04-24_004.xad

Created: 4/24/2017 2:27:09 PM
Modified: 4/24/2017 2:46:21 PM

Electropherogram Summary Continued ...

B6 LVR [Bisulfite Converted DNA_HiSeq_903]



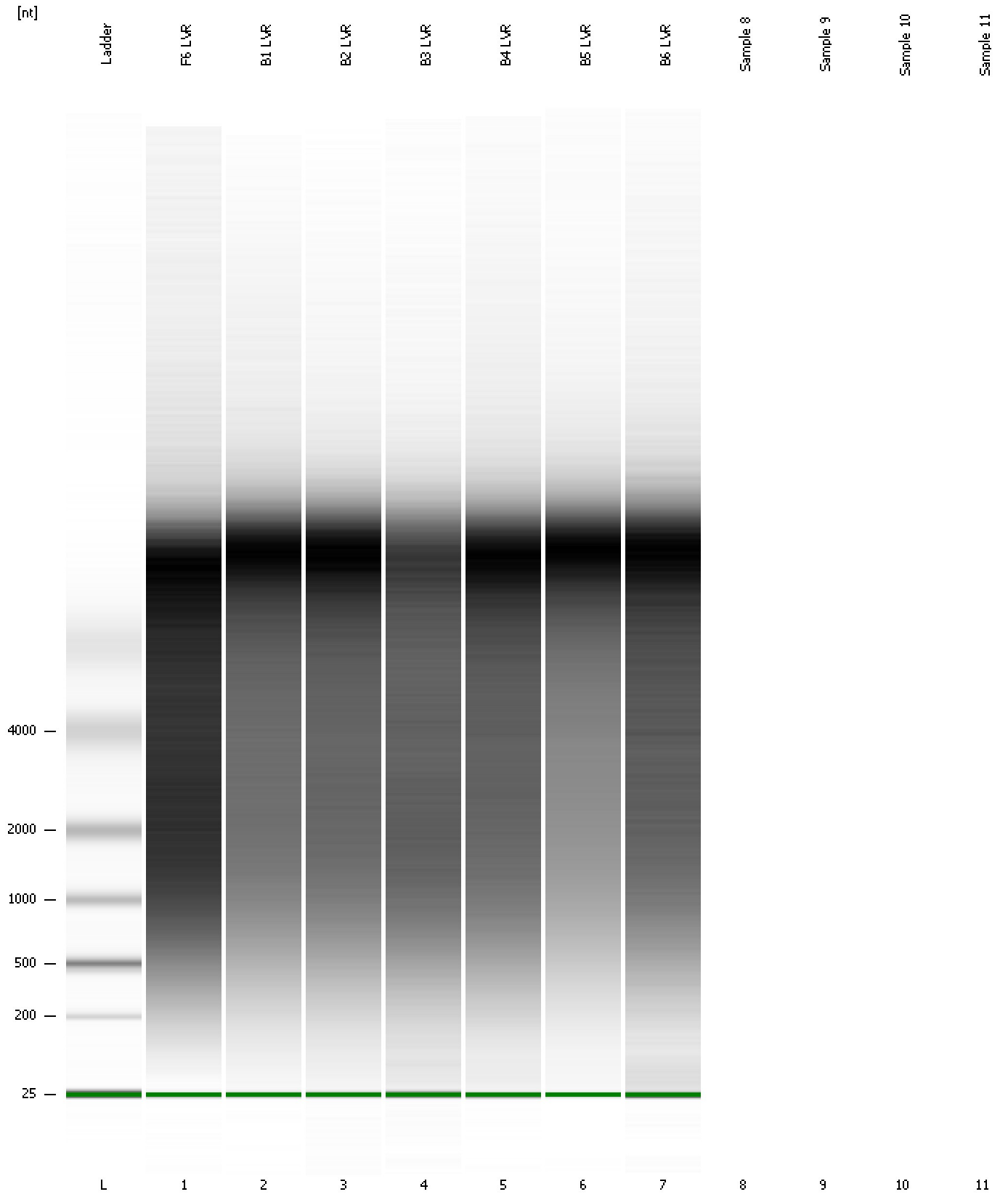
Overall Results for sample 7 : B6 LVR

RNA Area:	718.5	rRNA Contamination:	0.0 %
RNA Concentration:	6,223 pg/μl		

Assay Class: mRNA Pico
Data Path: C:\... bioanalyzer\2100 expert\data\2017-04-24\2017-04-24_004.xad

Created: 4/24/2017 2:27:09 PM
Modified: 4/24/2017 2:46:21 PM

Gel Image



Assay Class: mRNA Pico
Data Path: C:\... bioanalyzer\2100 expert\data\2017-04-24\2017-04-24_004.xad

Created: 4/24/2017 2:27:09 PM
Modified: 4/24/2017 2:46:21 PM

Invalid Samples

Sample 8 has not been run, no results available.

Sample 9 has not been run, no results available.

Sample 10 has not been run, no results available.

Sample 11 has not been run, no results available.