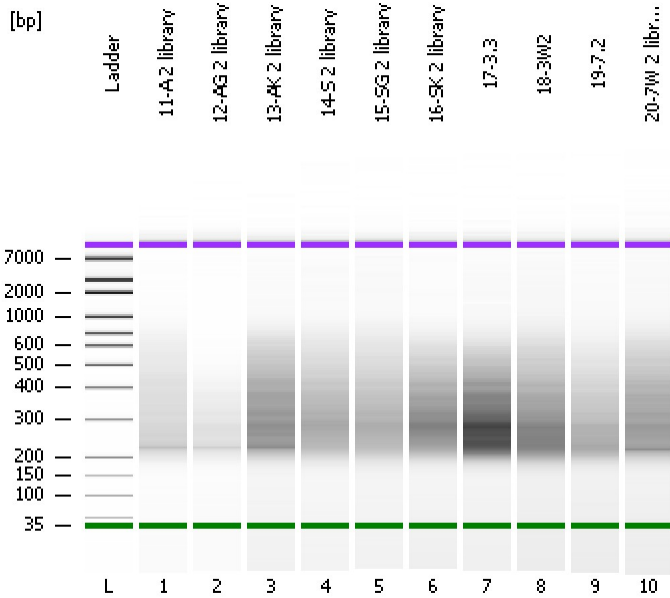


Assay Class: High Sensitivity DNA Assay
Data Path: C:\...ata\2017-05-15\2017-05-15_002_HiSeq_961_Libraries_11-20.xad

Created: 5/15/2017 11:06:21 AM
Modified: 5/15/2017 11:57:45 AM

Electrophoresis File Run Summary



Instrument Information:

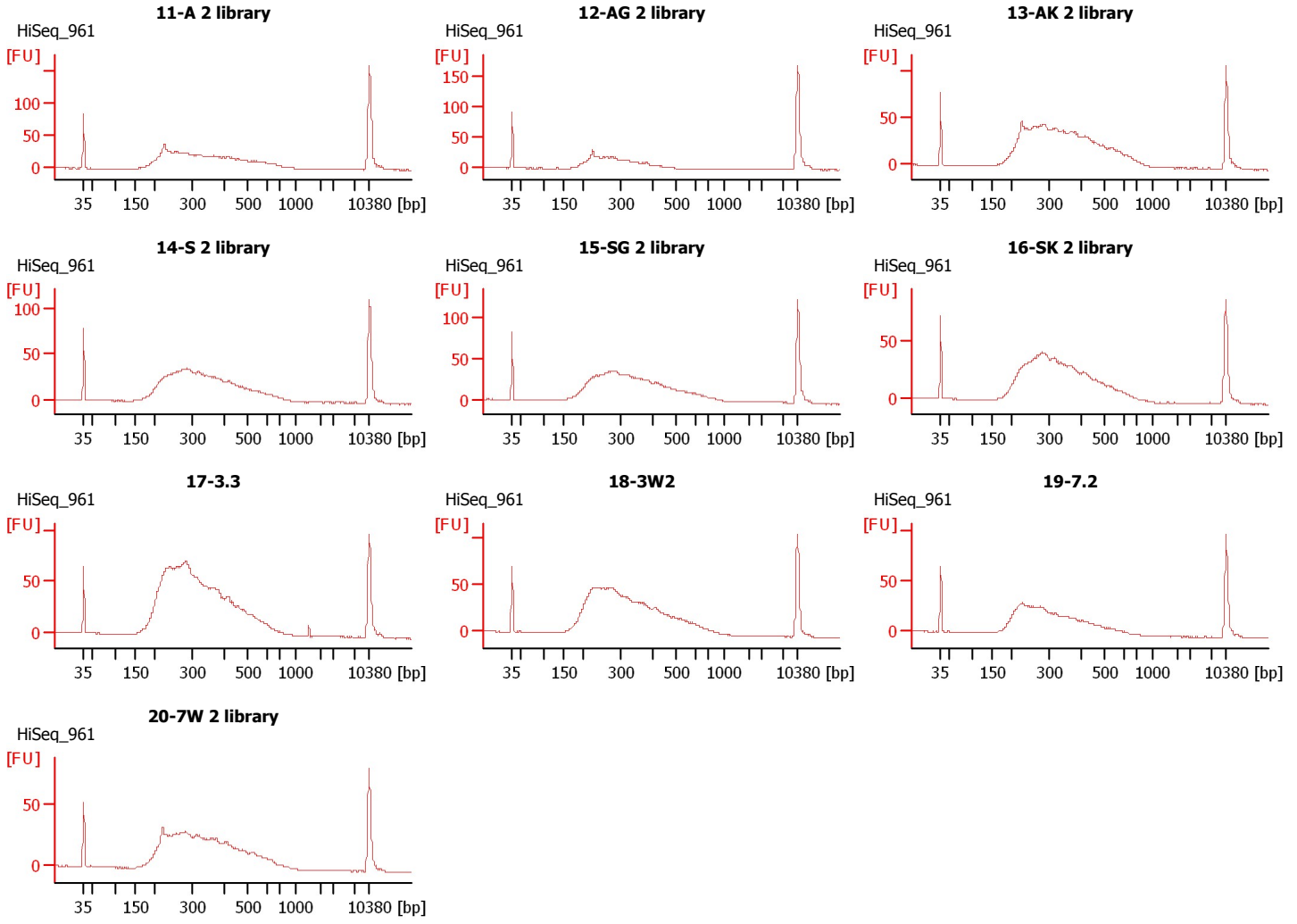
Instrument Name: DE13701086 Firmware: C.01.069
Serial#: DE13701086 Type: G2938B

Assay Information:

Assay Origin Path: C:\Program Files\Agilent\2100 bioanalyzer\2100 expert\assays\dsDNA\High Sensitivity DNA.xsy
Assay Class: High Sensitivity DNA Assay
Version: 1.03
Assay Comments: Copyright © 2003-2010 Agilent Technologies

Chip Information:

Chip Lot #: Reagent Kit Lot #: Chip Comments:



Assay Class: High Sensitivity DNA Assay
 Data Path: C:\...ata\2017-05-15\2017-05-15_002_HiSeq_961_Libraries_11-20.xad

Created: 5/15/2017 11:06:21 AM
 Modified: 5/15/2017 11:57:45 AM

Electrophoresis File Run Summary (Chip Summary)

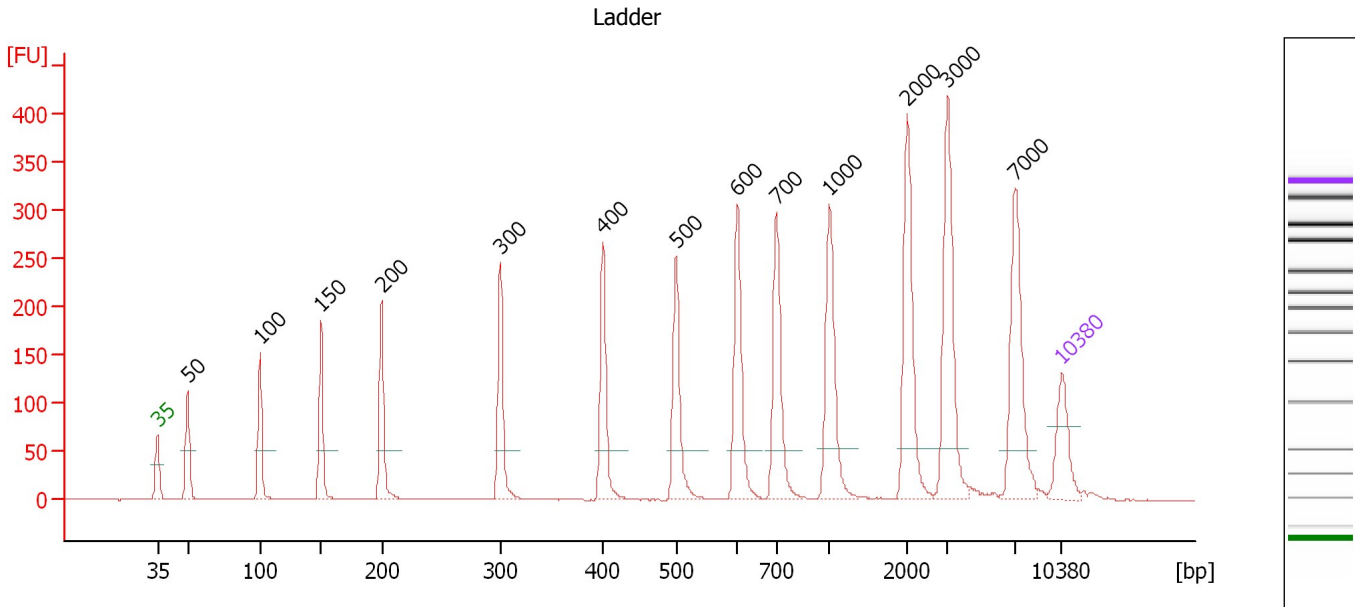
Sample Name	Sample Comment	Rest. Digest	Status	Observation	Result Label	Result Color
11-A 2 library	HiSeq_961	<input type="checkbox"/>	✓			
12-AG 2 library	HiSeq_961	<input type="checkbox"/>	✓			
13-AK 2 library	HiSeq_961	<input type="checkbox"/>	✓			
14-S 2 library	HiSeq_961	<input type="checkbox"/>	✓			
15-SG 2 library	HiSeq_961	<input type="checkbox"/>	✓			
16-SK 2 library	HiSeq_961	<input type="checkbox"/>	✓			
17-3.3	HiSeq_961	<input type="checkbox"/>	✓			
18-3W2	HiSeq_961	<input type="checkbox"/>	✓			
19-7.2	HiSeq_961	<input type="checkbox"/>	✓			
20-7W 2 library	HiSeq_961	<input type="checkbox"/>	✓			
Ladder		<input type="checkbox"/>	✓			
Chip Lot #				Reagent Kit Lot #		

Chip Comments :

Assay Class: High Sensitivity DNA Assay
 Data Path: C:\...ata\2017-05-15\2017-05-15_002_HiSeq_961_Libraries_11-20.xad

Created: 5/15/2017 11:06:21 AM
 Modified: 5/15/2017 11:57:45 AM

Electropherogram Summary



Overall Results for Ladder

Noise: 0.2

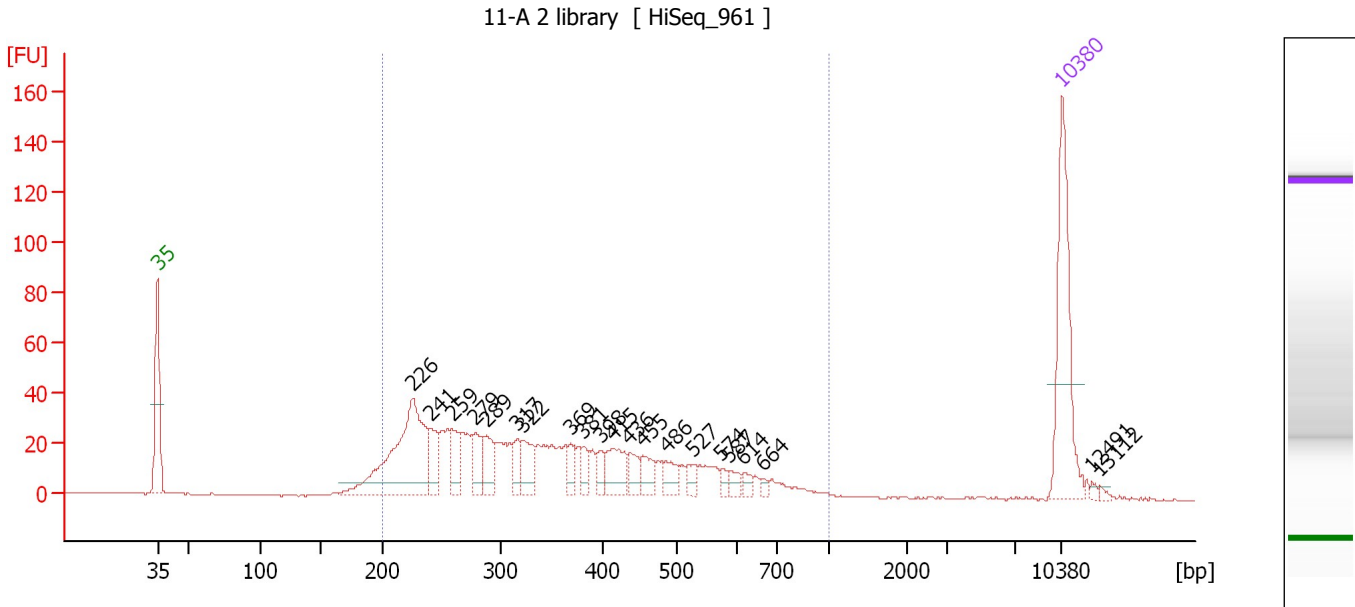
Peak table for Ladder

Peak	Size [bp]	Conc. [pg/μl]	Molarity [pmol/l]	Observations	Aligned Migration Time [s]
1	35	125.00	5,411.3	Lower Marker	43.00
2	50	150.00	4,545.5	Ladder Peak	45.32
3	100	150.00	2,272.7	Ladder Peak	50.93
4	150	150.00	1,515.2	Ladder Peak	55.67
5	200	150.00	1,136.4	Ladder Peak	60.36
6	300	150.00	757.6	Ladder Peak	69.52
7	400	150.00	568.2	Ladder Peak	77.45
8	500	150.00	454.5	Ladder Peak	83.15
9	600	150.00	378.8	Ladder Peak	87.88
10	700	150.00	324.7	Ladder Peak	90.91
11	1,000	150.00	227.3	Ladder Peak	94.98
12	2,000	150.00	113.6	Ladder Peak	101.03
13	3,000	150.00	75.8	Ladder Peak	104.15
14	7,000	150.00	32.5	Ladder Peak	109.36
15	10,380	75.00	10.9	Upper Marker	113.00

Assay Class: High Sensitivity DNA Assay
 Data Path: C:\...ata\2017-05-15\2017-05-15_002_HiSeq_961_Libraries_11-20.xad

Created: 5/15/2017 11:06:21 AM
 Modified: 5/15/2017 11:57:45 AM

Electropherogram Summary Continued ...



Overall Results for sample 1 : 11-A 2 library

Number of peaks found: 21 Corr. Area 1: 825.4
 Noise: 0.2

Peak table for sample 1 : 11-A 2 library


Peak	Size [bp]	Conc. [pg/μl]	Molarity [pmol/l]	Observations	Aligned Migration Time [s]
1	35	125.00	5,411.3	Lower Marker	43.00
2	226	151.82	1,015.7		62.78
3	241	25.45	160.2		64.08
4	259	23.87	139.6		65.77
5	279	25.39	137.9		67.60
6	289	25.78	135.3		68.49
7	317	14.31	68.5		70.85
8	322	25.13	118.3		71.25
9	369	12.60	51.7		74.99
10	381	11.46	45.5		75.97
11	398	10.38	39.5		77.31
12	415	28.14	102.8		78.29
13	436	13.80	48.0		79.49
14	455	16.20	54.0		80.56
15	486	14.32	44.7		82.34
16	527	9.03	25.9		84.44
17	574	4.69	12.4		86.67
18	587	6.77	17.5		87.29
19	614	5.51	13.6		88.32
20	664	3.22	7.3		89.83
21	10,380	75.00	10.9	Upper Marker	113.00
22	12,491	0.00	0.0		115.27
23	13,112	0.00	0.0		115.94

Assay Class: High Sensitivity DNA Assay
Data Path: C:\...ata\2017-05-15\2017-05-15_002_HiSeq_961_Libraries_11-20.xad

Created: 5/15/2017 11:06:21 AM
Modified: 5/15/2017 11:57:45 AM

Electropherogram Summary Continued ...

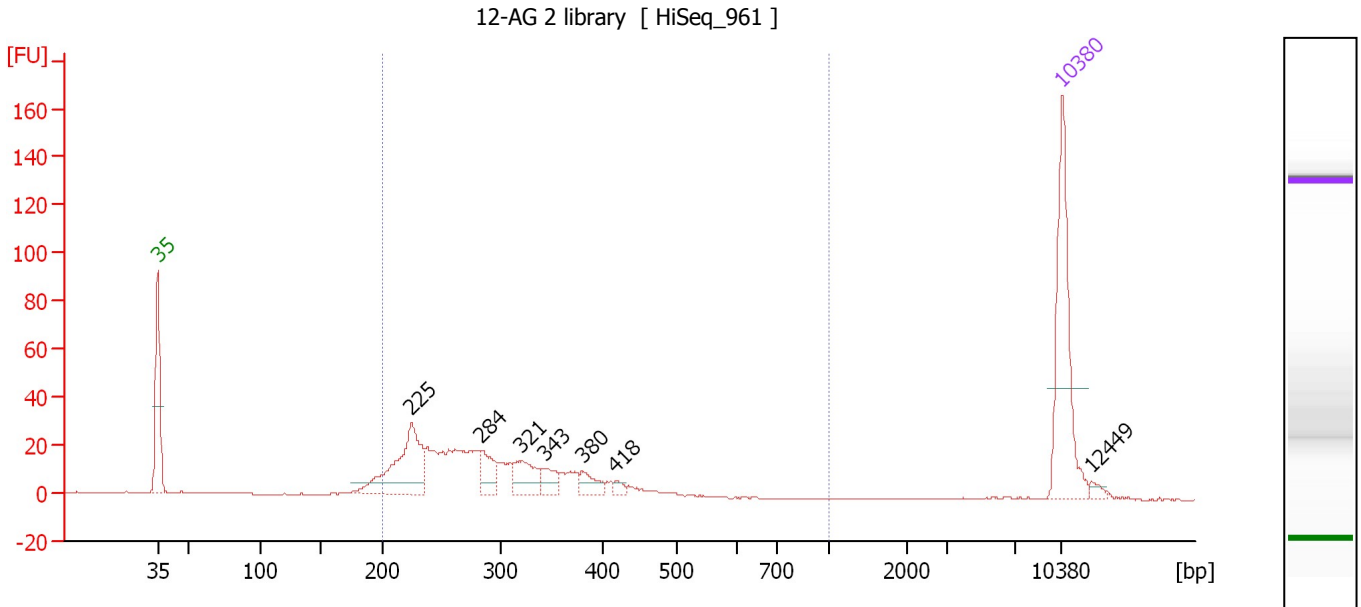
... Region table for sample 1 : 11-A 2 library

From [bp]	To [bp]	Average Size [bp]	Corr. Area	Molarity [pmol/l]	Co Conc. lor [pg/μl]	% of Total	Size distribution in CV [%]
200	1,000	369	825.4	3,050.4	 630.42	94	37.4

Assay Class: High Sensitivity DNA Assay
 Data Path: C:\...ata\2017-05-15\2017-05-15_002_HiSeq_961_Libraries_11-20.xad

Created: 5/15/2017 11:06:21 AM
 Modified: 5/15/2017 11:57:45 AM

Electropherogram Summary Continued ...



Overall Results for sample 2 : 12-AG 2 library

Number of peaks found: 7 Corr. Area 1: 414.9
 Noise: 0.2

Peak table for sample 2 : 12-AG 2 library

Peak	Size [bp]	Conc. [pg/μl]	Molarity [pmol/l]	Observations	Aligned Migration Time [s]
1	35	125.00	5,411.3	Lower Marker	43.00
2	225	89.60	603.7		62.64
3	284	23.38	124.8		68.05
4	321	27.91	131.8		71.18
5	343	13.62	60.2		72.91
6	380	13.13	52.4		75.86
7	418	4.51	16.4		78.45
8	10,380	75.00	10.9	Upper Marker	113.00
9	12,449	0.00	0.0		115.23

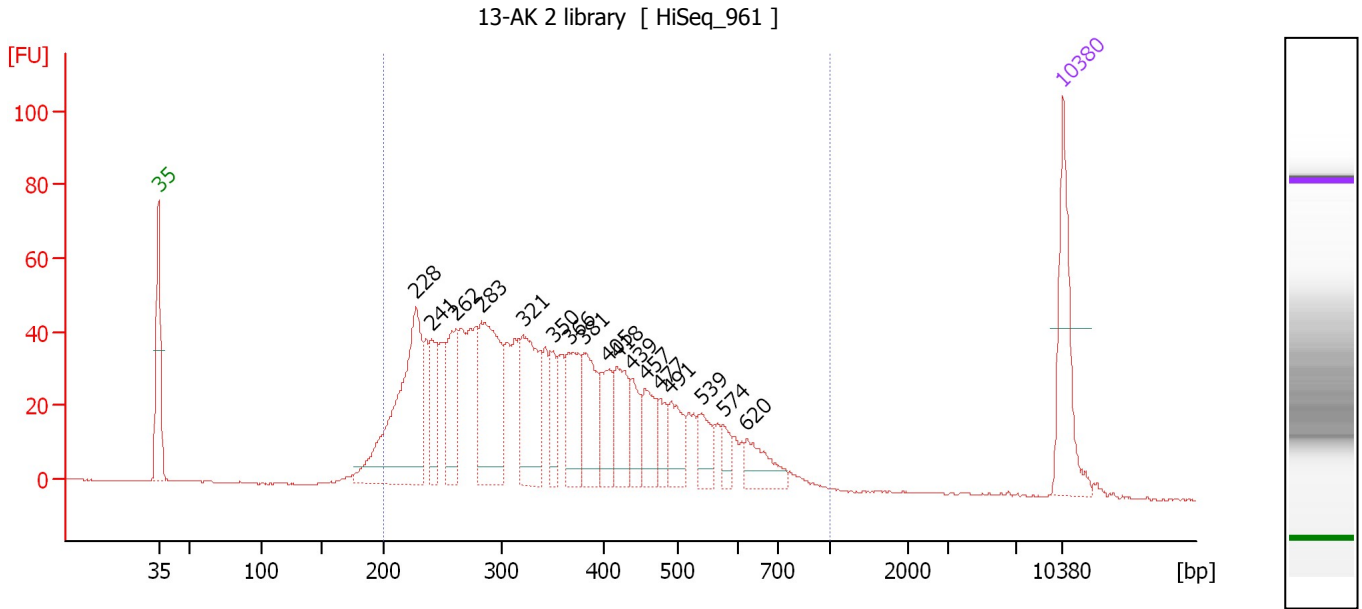
Region table for sample 2 : 12-AG 2 library

From [bp]	To [bp]	Average Size [bp]	Corr. Area	Molarity [pmol/l]	Co Conc. [pg/μl]	% of Total	Size distribution in CV [%]
200	1,000	296	414.9	1,697.1	312.13	91	22.7

Assay Class: High Sensitivity DNA Assay
 Data Path: C:\...ata\2017-05-15\2017-05-15_002_HiSeq_961_Libraries_11-20.xad

Created: 5/15/2017 11:06:21 AM
 Modified: 5/15/2017 11:57:45 AM

Electropherogram Summary Continued ...



Overall Results for sample 3 : 13-AK 2 library

Number of peaks found: 17 Corr. Area 1: 1,325.3
 Noise: 0.2

Peak table for sample 3 : 13-AK 2 library

Peak	Size [bp]	Conc. [pg/μl]	Molarity [pmol/l]	Observations	Aligned Migration Time [s]
1	35	125.00	5,411.3	Lower Marker	43.00
2	228	248.08	1,646.2		62.95
3	241	55.12	346.5		64.12
4	262	86.36	499.7		66.02
5	283	160.13	856.8		67.98
6	321	122.06	576.1		71.19
7	350	36.30	157.0		73.51
8	366	70.18	290.4		74.77
9	381	73.18	290.7		75.98
10	405	49.75	186.1		77.74
11	418	59.79	216.6		78.49
12	439	34.82	120.3		79.65
13	457	43.64	144.8		80.67
14	477	24.28	77.1		81.84
15	491	40.33	124.5		82.63
16	539	31.73	89.2		85.00
17	574	15.24	40.2		86.67
18	620	36.99	90.4		88.49
19	10,380	75.00	10.9	Upper Marker	113.00

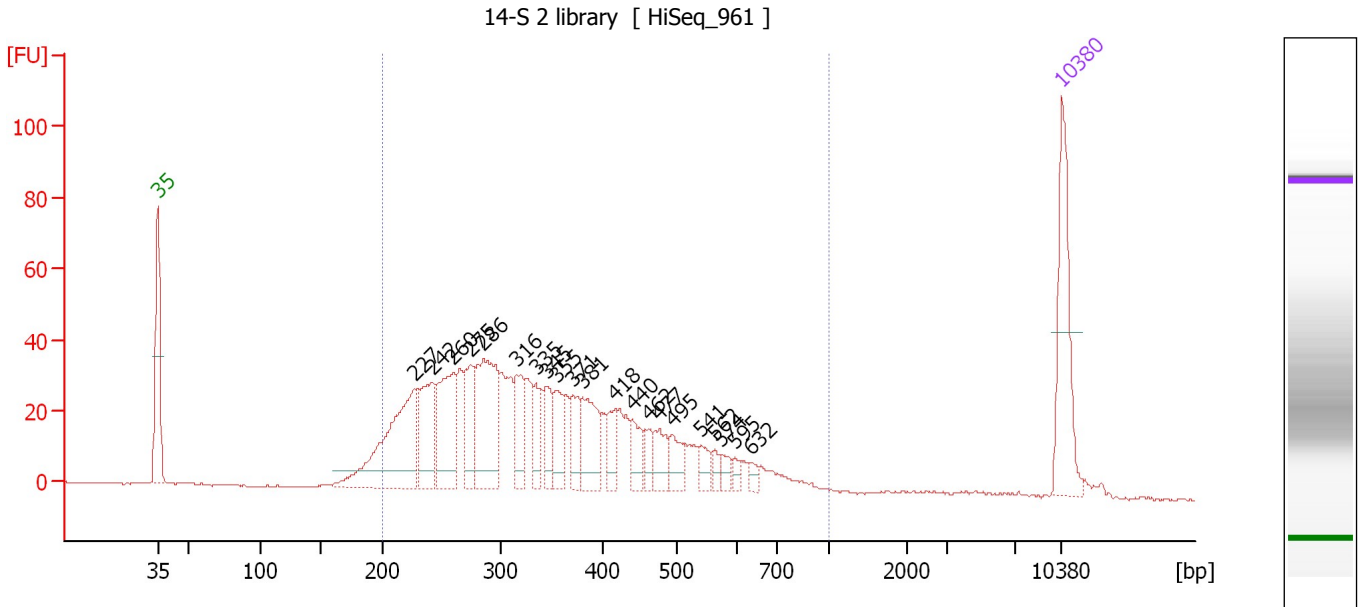
Region table for sample 3 : 13-AK 2 library

From [bp]	To [bp]	Average Size [bp]	Corr. Area	Molarity [pmol/l]	Co Conc. [pg/μl]	% of Total	Size distribution in CV [%]
200	1,000	367	1,325.3	7,649.0	1,610.87	97	34.0

Assay Class: High Sensitivity DNA Assay
 Data Path: C:\...ata\2017-05-15\2017-05-15_002_HiSeq_961_Libraries_11-20.xad

Created: 5/15/2017 11:06:21 AM
 Modified: 5/15/2017 11:57:45 AM

Electropherogram Summary Continued ...



Overall Results for sample 4 : 14-S 2 library

Number of peaks found: 21 Corr. Area 1: 954.8
 Noise: 0.2

Peak table for sample 4 : 14-S 2 library

Peak	Size [bp]	Conc. [pg/μl]	Molarity [pmol/l]	Observations	Aligned Migration Time [s]
1	35	125.00	5,411.3	Lower Marker	43.00
2	227	169.68	1,130.8		62.86
3	242	76.94	480.9		64.24
4	260	96.60	562.9		65.86
5	275	49.63	273.4		67.24
6	286	120.51	638.5		68.23
7	316	46.99	225.2		70.80
8	335	29.67	134.3		72.27
9	345	32.60	143.2		73.08
10	355	39.00	166.4		73.89
11	371	30.31	123.9		75.12
12	381	60.03	238.8		75.93
13	418	25.27	91.7		78.45
14	440	25.43	87.6		79.73
15	462	14.34	47.1		80.97
16	477	24.77	78.7		81.83
17	495	22.58	69.1		82.87
18	541	13.51	37.8		85.10
19	562	8.19	22.1		86.10
20	574	10.54	27.8		86.67
21	595	6.37	16.2		87.67
22	632	5.97	14.3		88.86
23	10,380	75.00	10.9	Upper Marker	113.00

Assay Class: High Sensitivity DNA Assay
Data Path: C:\...ata\2017-05-15\2017-05-15_002_HiSeq_961_Libraries_11-20.xad

Created: 5/15/2017 11:06:21 AM
Modified: 5/15/2017 11:57:45 AM

Electropherogram Summary Continued ...

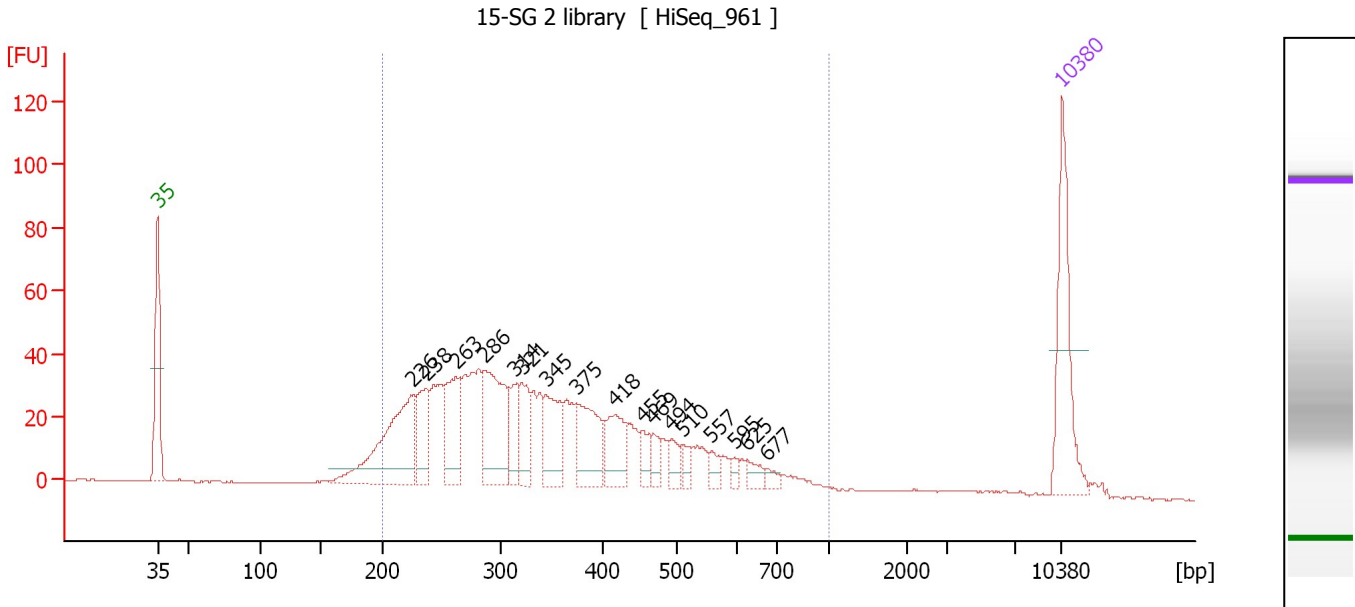
... Region table for sample 4 : 14-S 2 library

From [bp]	To [bp]	Average Size [bp]	Corr. Area	Molarity [pmol/l]	Co Conc. lor [pg/μl]	% of Total	Size distribution in CV [%]
200	1,000	359	954.8	5,420.3	1,125.93	96	33.8

Assay Class: High Sensitivity DNA Assay
 Data Path: C:\...ata\2017-05-15\2017-05-15_002_HiSeq_961_Libraries_11-20.xad

Created: 5/15/2017 11:06:21 AM
 Modified: 5/15/2017 11:57:45 AM

Electropherogram Summary Continued ...



Overall Results for sample 5 : 15-SG 2 library

Number of peaks found: 17 Corr. Area 1: 1,004.9
 Noise: 0.2

Peak table for sample 5 : 15-SG 2 library

Peak	Size [bp]	Conc. [pg/μl]	Molarity [pmol/l]	Observations	Aligned Migration Time [s]
1	35	125.00	5,411.3	Lower Marker	43.00
2	226	147.56	988.9		62.75
3	238	57.11	364.2		63.80
4	263	70.76	407.2		66.16
5	286	115.56	611.4		68.27
6	314	32.42	156.5		70.63
7	321	42.56	200.7		71.20
8	345	57.62	253.2		73.08
9	375	67.01	271.1		75.43
10	418	47.42	172.0		78.46
11	455	15.97	53.2		80.57
12	469	13.84	44.7		81.39
13	494	15.32	47.0		82.78
14	510	9.37	27.8		83.65
15	557	11.57	31.5		85.86
16	595	5.97	15.2		87.63
17	625	10.89	26.4		88.64
18	677	7.42	16.6		90.23
19	10,380	75.00	10.9	Upper Marker	113.00

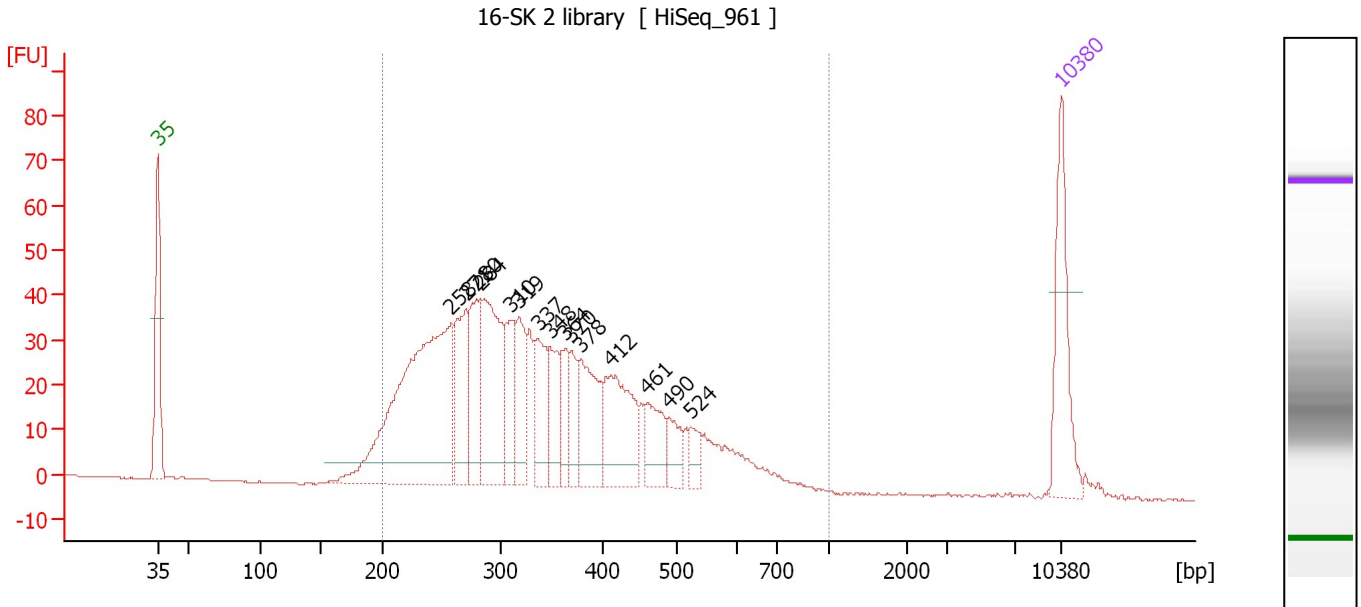
Region table for sample 5 : 15-SG 2 library

From [bp]	To [bp]	Average Size [bp]	Corr. Area	Molarity [pmol/l]	Co Conc. [pg/μl]	% of Total	Size distribution in CV [%]
200	1,000	362	1,004.9	4,972.6	1,031.95	94	35.3

Assay Class: High Sensitivity DNA Assay
 Data Path: C:\...ata\2017-05-15\2017-05-15_002_HiSeq_961_Libraries_11-20.xad

Created: 5/15/2017 11:06:21 AM
 Modified: 5/15/2017 11:57:45 AM

Electropherogram Summary Continued ...



Overall Results for sample 6 : 16-SK 2 library

Number of peaks found: 15 Corr. Area 1: 1,021.2
 Noise: 0.2

Peak table for sample 6 : 16-SK 2 library

Peak	Size [bp]	Conc. [pg/μl]	Molarity [pmol/l]	Observations	Aligned Migration Time [s]
1	35	125.00	5,411.3	Lower Marker	43.00
2	258	391.56	2,295.9		65.71
3	271	94.42	527.9		66.86
4	280	78.03	421.6		67.73
5	284	161.30	861.7		68.02
6	310	58.26	284.6		70.33
7	319	63.20	300.5		71.00
8	337	68.10	306.3		72.44
9	348	46.59	202.6		73.36
10	364	39.78	165.8		74.56
11	370	32.91	134.9		75.04
12	378	77.95	312.4		75.71
13	412	104.28	383.8		78.12
14	461	45.57	149.9		80.91
15	490	28.22	87.2		82.59
16	524	17.74	51.3		84.28
17	10,380	75.00	10.9	Upper Marker	113.00

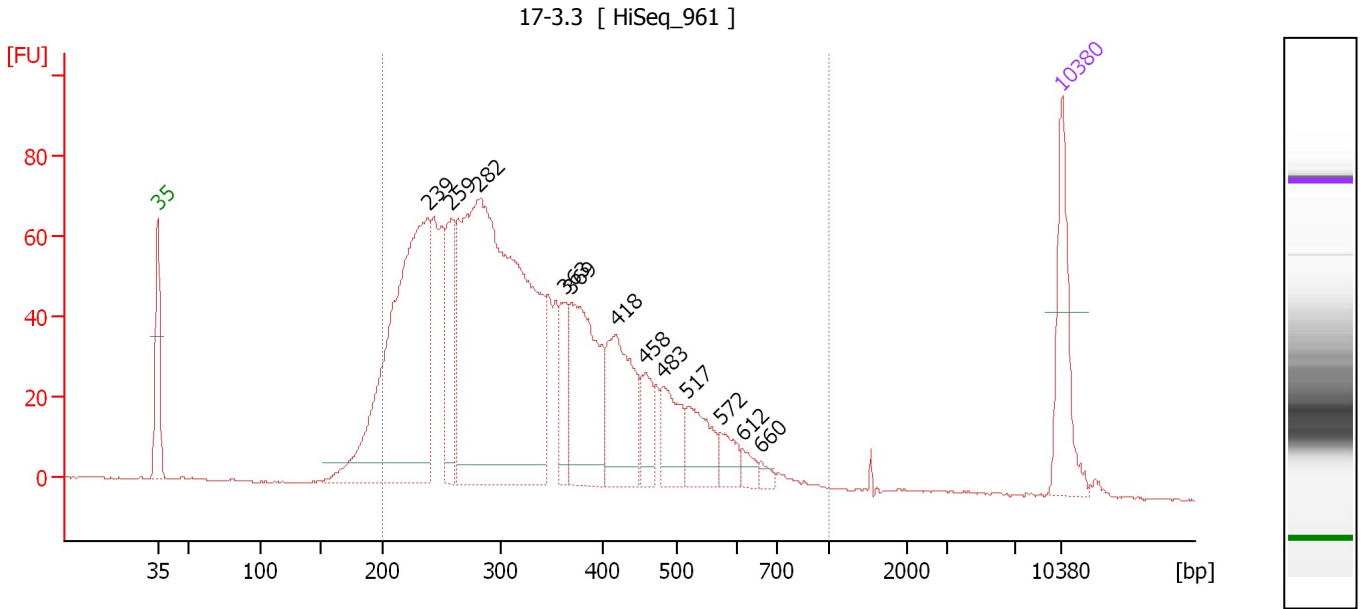
Region table for sample 6 : 16-SK 2 library

From [bp]	To [bp]	Average Size [bp]	Corr. Area	Molarity [pmol/l]	Co Conc. [pg/μl]	% of Total	Size distribution in CV [%]
200	1,000	349	1,021.2	6,933.8	1,426.45	97	30.6

Assay Class: High Sensitivity DNA Assay
 Data Path: C:\...ata\2017-05-15\2017-05-15_002_HiSeq_961_Libraries_11-20.xad

Created: 5/15/2017 11:06:21 AM
 Modified: 5/15/2017 11:57:45 AM

Electropherogram Summary Continued ...



Overall Results for sample 7 : 17-3.3

Number of peaks found: 12 Corr. Area 1: 1,736.3
 Noise: 0.2

Peak table for sample 7 : 17-3.3

Peak	Size [bp]	Conc. [pg/μl]	Molarity [pmol/l]	Observations	Aligned Migration Time [s]
1	35	125.00	5,411.3	Lower Marker	43.00
2	239	534.91	3,392.3		63.92
3	259	107.06	627.5		65.72
4	282	823.49	4,427.1		67.85
5	363	50.88	212.4		74.50
6	369	179.98	739.1		74.99
7	418	133.22	482.8		78.49
8	458	41.99	138.8		80.77
9	483	59.68	187.3		82.17
10	517	60.64	177.6		83.97
11	572	25.87	68.6		86.54
12	612	12.77	31.6		88.24
13	660	7.81	17.9		89.70
14	10,380	75.00	10.9	Upper Marker	113.00

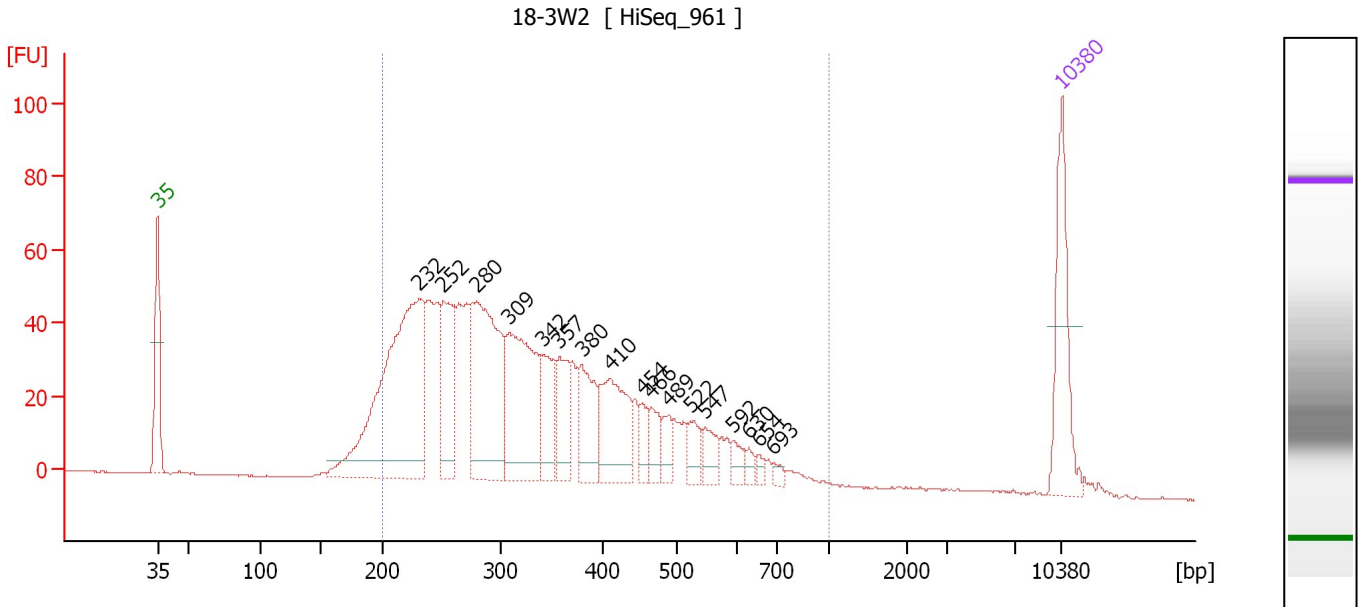
Region table for sample 7 : 17-3.3

From [bp]	To [bp]	Average Size [bp]	Corr. Area	Molarity [pmol/l]	Co Conc. lor [pg/μl]	% of Total	Size distribution in CV [%]
200	1,000	339	1,736.3	11,157.5	2,222.02	95	32.0

Assay Class: High Sensitivity DNA Assay
 Data Path: C:\...ata\2017-05-15\2017-05-15_002_HiSeq_961_Libraries_11-20.xad

Created: 5/15/2017 11:06:21 AM
 Modified: 5/15/2017 11:57:45 AM

Electropherogram Summary Continued ...



Overall Results for sample 8 : 18-3W2

Number of peaks found: 17 Corr. Area 1: 1,305.9
 Noise: 0.2

Peak table for sample 8 : 18-3W2

Peak	Size [bp]	Conc. [pg/μl]	Molarity [pmol/l]	Observations	Aligned Migration Time [s]
1	35	125.00	5,411.3	Lower Marker	43.00
2	232	387.96	2,536.7		63.26
3	252	98.36	591.5		65.12
4	280	228.77	1,237.4		67.70
5	309	175.73	861.7		70.23
6	342	64.15	284.6		72.81
7	357	55.43	234.9		74.08
8	380	67.19	268.2		75.83
9	410	94.42	348.9		78.02
10	454	22.29	74.4		80.51
11	466	24.26	78.8		81.24
12	489	19.96	61.9		82.51
13	522	22.20	64.4		84.21
14	547	22.93	63.5		85.38
15	592	12.72	32.5		87.52
16	630	8.16	19.6		88.79
17	654	6.46	15.0		89.52
18	693	5.98	13.1		90.69
19	10,380	75.00	10.9	Upper Marker	113.00

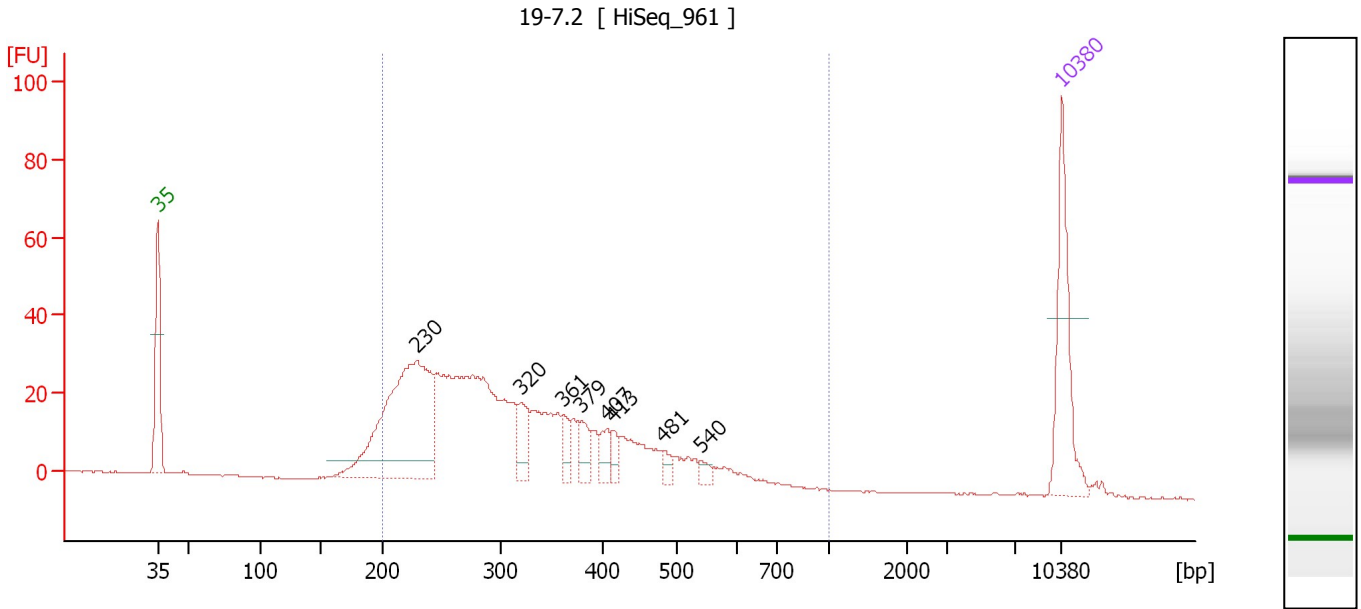
Region table for sample 8 : 18-3W2

From [bp]	To [bp]	Average Size [bp]	Corr. Area	Molarity [pmol/l]	Co Conc. [pg/μl]	% of Total	Size distribution in CV [%]
200	1,000	347	1,305.9	7,835.8	1,567.74	94	35.2

Assay Class: High Sensitivity DNA Assay
 Data Path: C:\...ata\2017-05-15\2017-05-15_002_HiSeq_961_Libraries_11-20.xad

Created: 5/15/2017 11:06:21 AM
 Modified: 5/15/2017 11:57:45 AM

Electropherogram Summary Continued ...



Overall Results for sample 9 : 19-7.2

Number of peaks found: 8 Corr. Area 1: 671.7
 Noise: 0.2

Peak table for sample 9 : 19-7.2

Peak	Size [bp]	Conc. [pg/μl]	Molarity [pmol/l]	Observations	Aligned Migration Time [s]
1	35	125.00	5,411.3	Lower Marker	43.00
2	230	302.37	1,995.9		63.06
3	320	33.94	160.7		71.11
4	361	18.28	76.8		74.35
5	379	24.97	99.7		75.82
6	407	18.23	67.9		77.83
7	413	12.70	46.6		78.17
8	481	10.20	32.1		82.10
9	540	8.45	23.7		85.04
10	10,380	75.00	10.9	Upper Marker	113.00

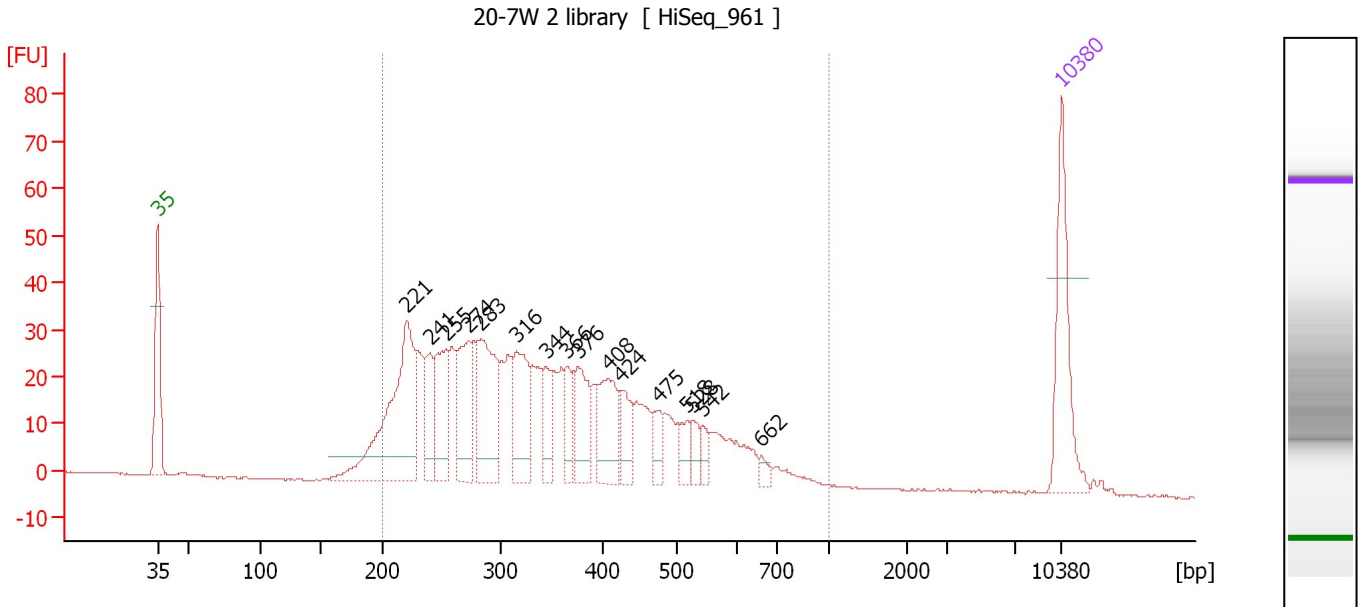
Region table for sample 9 : 19-7.2

From [bp]	To [bp]	Average Size [bp]	Corr. Area	Molarity [pmol/l]	Co Conc. lor [pg/μl]	% of Total	Size distribution in CV [%]
200	1,000	326	671.7	4,685.8	904.10	94	30.7

Assay Class: High Sensitivity DNA Assay
 Data Path: C:\...ata\2017-05-15\2017-05-15_002_HiSeq_961_Libraries_11-20.xad

Created: 5/15/2017 11:06:21 AM
 Modified: 5/15/2017 11:57:45 AM

Electropherogram Summary Continued ...



Overall Results for sample 10 : 20-7W 2 library

Number of peaks found: 16 Corr. Area 1: 847.4
 Noise: 0.2

Peak table for sample 10 : 20-7W 2 library

Peak	Size [bp]	Conc. [pg/μl]	Molarity [pmol/l]	Observations	Aligned Migration Time [s]
1	35	125.00	5,411.3	Lower Marker	43.00
2	221	220.54	1,511.8		62.28
3	241	52.72	332.1		64.07
4	255	73.26	436.0		65.36
5	274	84.89	469.3		67.14
6	283	118.35	633.0		67.99
7	316	79.31	379.9		70.81
8	344	34.99	153.9		73.04
9	366	30.96	128.3		74.73
10	376	59.65	240.6		75.52
11	408	65.60	243.7		77.90
12	424	34.99	124.9		78.84
13	475	21.29	67.9		81.72
14	518	18.36	53.7		84.00
15	528	17.07	49.0		84.49
16	542	13.25	37.0		85.14
17	662	7.17	16.4		89.75
18	10,380	75.00	10.9	Upper Marker	113.00

Region table for sample 10 : 20-7W 2 library

From [bp]	To [bp]	Average Size [bp]	Corr. Area	Molarity [pmol/l]	Co Conc. [pg/μl]	% of Total	Size distribution in CV [%]
200	1,000	360	847.4	6,361.0	1,317.64	97	34.1

Assay Class: High Sensitivity DNA Assay
Data Path: C:\...ata\2017-05-15\2017-05-15_002_HiSeq_961_Libraries_11-20.xad

Created: 5/15/2017 11:06:21 AM
Modified: 5/15/2017 11:57:45 AM

Gel Image

