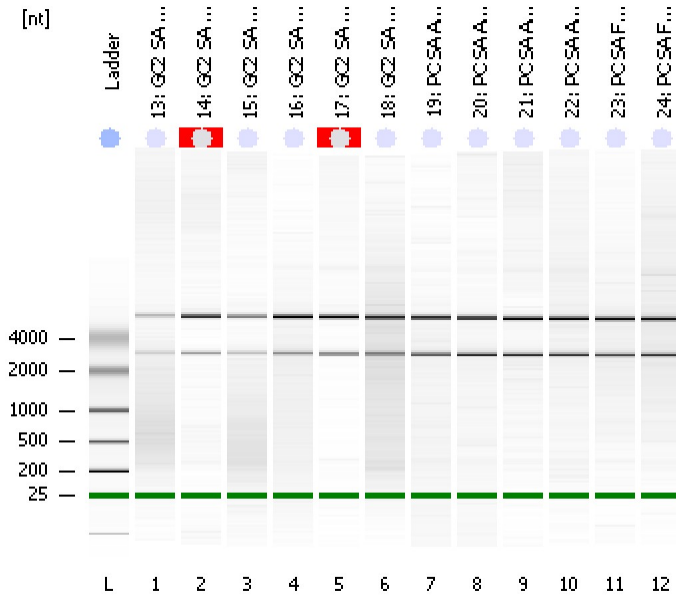


Assay Class: Eukaryote Total RNA Nano  
Data Path: C:\... bioanalyzer\2100 expert\data\2017-06-27\2017-06-27\_002.xad

Created: 6/27/2017 9:00:18 AM  
Modified: 6/27/2017 9:23:21 AM

Electrophoresis File Run Summary



Instrument Information:

Instrument Name: DE13701086      Firmware: C.01.069  
Serial#: DE13701086      Type: G2938B

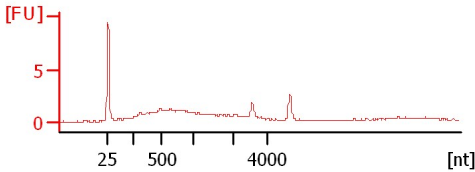
Assay Information:

Assay Origin Path: C:\Program Files\Agilent\2100 bioanalyzer\2100 expert\assays\RNA\Eukaryote Total RNA Nano Series II.xsy  
Assay Class: Eukaryote Total RNA Nano  
Version: 2.6  
Assay Comments: Total RNA Analysis ng sensitivity (Eukaryote)  
© Copyright 2003 - 2009 Agilent Technologies, Inc.

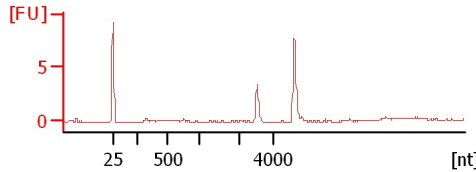
Chip Information:

Chip Lot #:   
Reagent Kit Lot #:   
Chip Comments:

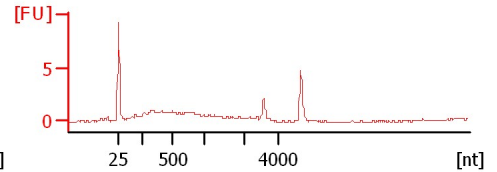
**13: GC2 SA A2 RNA**  
HiSeq 1027 Tot RNA QC  
RIN: 5.50



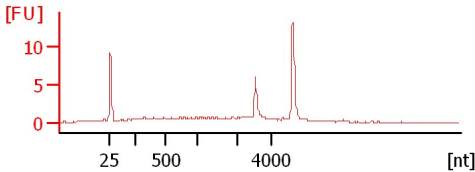
**14: GC2 SA A4 RNA**  
HiSeq 1027 Tot RNA QC  
RIN: N/A



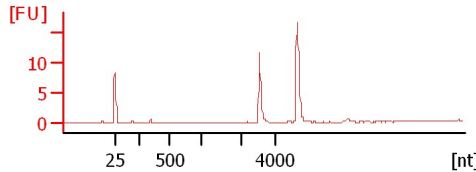
**15: GC2 SA B5 RNA**  
HiSeq 1027 Tot RNA QC  
RIN: 6.60



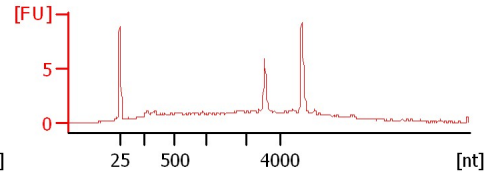
**16: GC2 SA A3 RNA**  
HiSeq 1027 Tot RNA QC  
RIN: 8



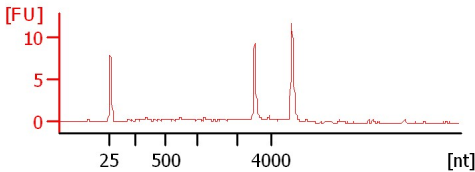
**17: GC2 SA B1 RNA**  
HiSeq 1027 Tot RNA QC  
RIN: N/A



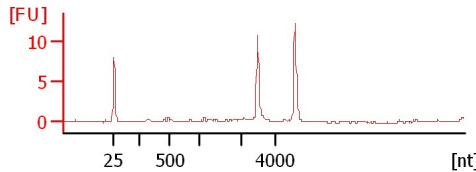
**18: GC2 SA B4 RNA**  
HiSeq 1027 Tot RNA QC  
RIN: 6.50



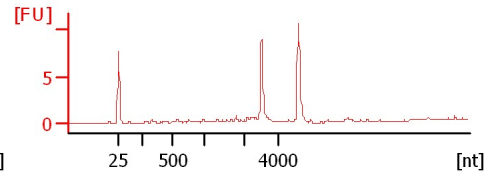
**19: PC SA ASAP1 RNA**  
HiSeq 1027 Tot RNA QC  
RIN: 8.40



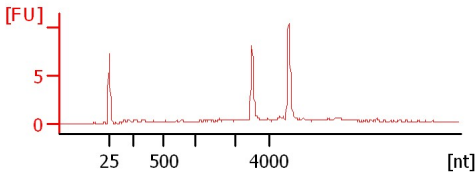
**20: PC SA ASAP2 RNA**  
HiSeq 1027 Tot RNA QC  
RIN: 8.50



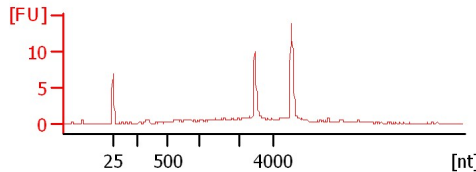
**21: PC SA ASAP3 RNA**  
HiSeq 1027 Tot RNA QC  
RIN: 8.90



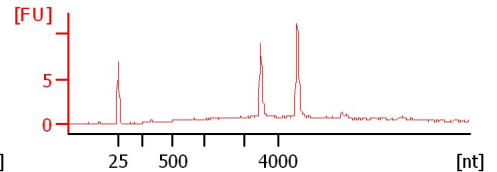
**22: PC SA ASAP5 RNA**  
HiSeq 1027 Tot RNA QC  
RIN: 8.40



**23: PC SA FROZEN11 RNA**  
HiSeq 1027 Tot RNA QC  
RIN: 7.80



**24: PC SA FROZEN12 RNA**  
HiSeq 1027 Tot RNA QC  
RIN: 7.60



Assay Class: Eukaryote Total RNA Nano  
Data Path: C:\... bioanalyzer\2100 expert\data\2017-06-27\2017-06-27\_002.xad

Created: 6/27/2017 9:00:18 AM  
Modified: 6/27/2017 9:23:21 AM

**Electrophoresis File Run Summary (Chip Summary)**

Sample Name	Sample Comment	Status	Result Label	Result Color
13: GC2 SA A2 RNA	HiSeq 1027 Tot RNA QC	✓	RIN: 5.50	
14: GC2 SA A4 RNA	HiSeq 1027 Tot RNA QC	✓	RIN N/A	
15: GC2 SA B5 RNA	HiSeq 1027 Tot RNA QC	✓	RIN: 6.60	
16: GC2 SA A3 RNA	HiSeq 1027 Tot RNA QC	✓	RIN:8	
17: GC2 SA B1 RNA	HiSeq 1027 Tot RNA QC	✓	RIN N/A	
18: GC2 SA B4 RNA	HiSeq 1027 Tot RNA QC	✓	RIN: 6.50	
19: PC SA ASAP1 RNA	HiSeq 1027 Tot RNA QC	✓	RIN: 8.40	
20: PC SA ASAP2 RNA	HiSeq 1027 Tot RNA QC	✓	RIN: 8.50	
21: PC SA ASAP3 RNA	HiSeq 1027 Tot RNA QC	✓	RIN: 8.90	
22: PC SA ASAP5 RNA	HiSeq 1027 Tot RNA QC	✓	RIN: 8.40	
23: PC SA FROZEN11 RNA	HiSeq 1027 Tot RNA QC	✓	RIN: 7.80	
24: PC SA FROZEN12 RNA	HiSeq 1027 Tot RNA QC	✓	RIN: 7.60	
Ladder		✓	All Other Samples	

**Chip Lot #**

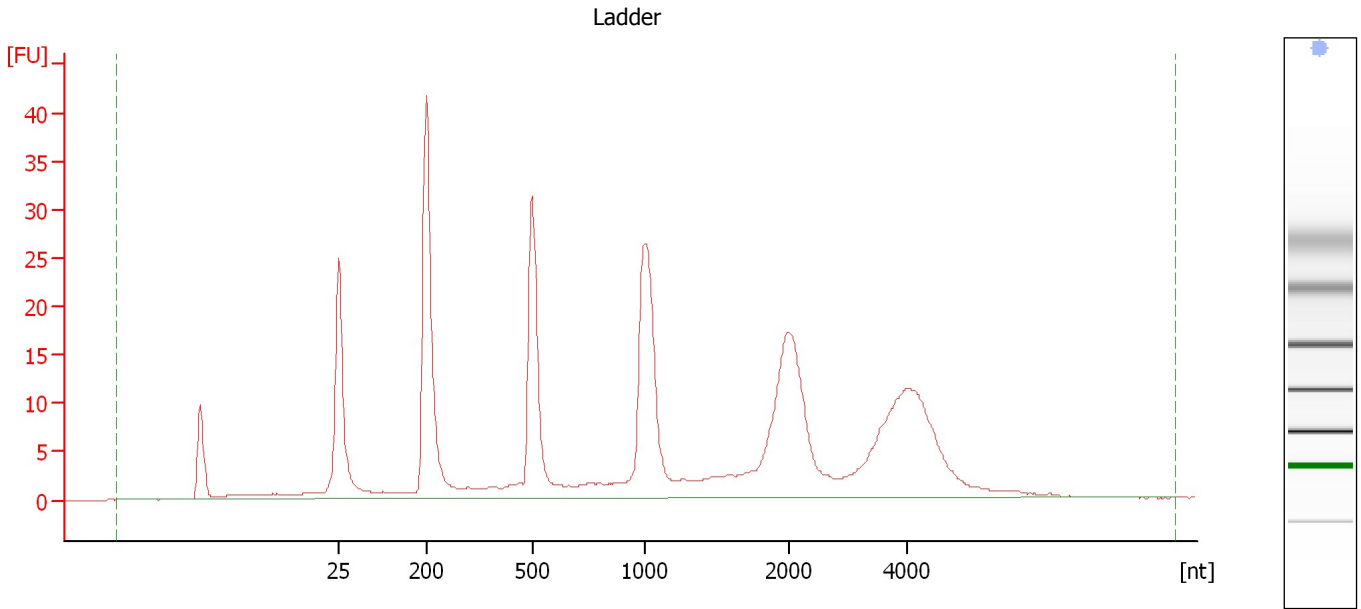
**Reagent Kit Lot #**

**Chip Comments :**

Assay Class: Eukaryote Total RNA Nano  
Data Path: C:\... bioanalyzer\2100 expert\data\2017-06-27\2017-06-27\_002.xad

Created: 6/27/2017 9:00:18 AM  
Modified: 6/27/2017 9:23:21 AM

**Electropherogram Summary**



**Overall Results for Ladder**

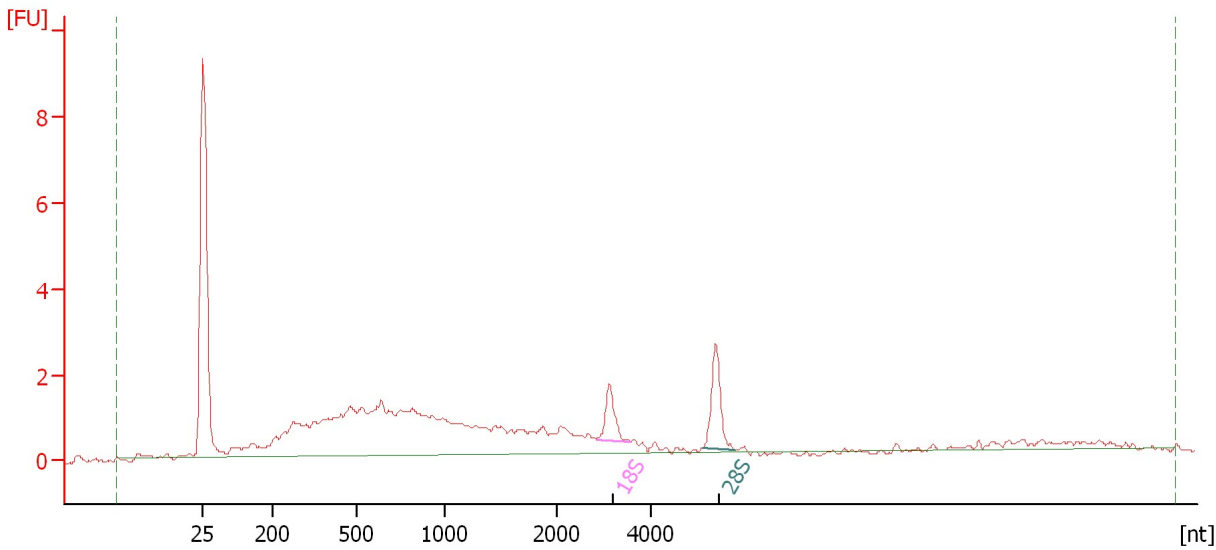
RNA Area:	346.9	Result Flagging Color:	<span style="background-color: #add8e6; border: 1px solid black; display: inline-block; width: 20px; height: 10px;"></span>
RNA Concentration:	150 ng/μl	Result Flagging Label:	All Other Samples

Assay Class: Eukaryote Total RNA Nano  
Data Path: C:\... bioanalyzer\2100 expert\data\2017-06-27\2017-06-27\_002.xad

Created: 6/27/2017 9:00:18 AM  
Modified: 6/27/2017 9:23:21 AM

**Electropherogram Summary Continued ...**

13: GC2 SA A2 RNA [ HiSeq 1027 Tot RNA QC ]



**Overall Results for sample 1 : 13: GC2 SA A2 RNA**

RNA Area: 42.9 RNA Integrity Number (RIN): 5.5 (B.02.08)  
RNA Concentration: 19 ng/μl Result Flagging Color:   
rRNA Ratio [28s / 18s]: 1.7 Result Flagging Label: RIN: 5.50

**Fragment table for sample 1 : 13: GC2 SA A2 RNA**

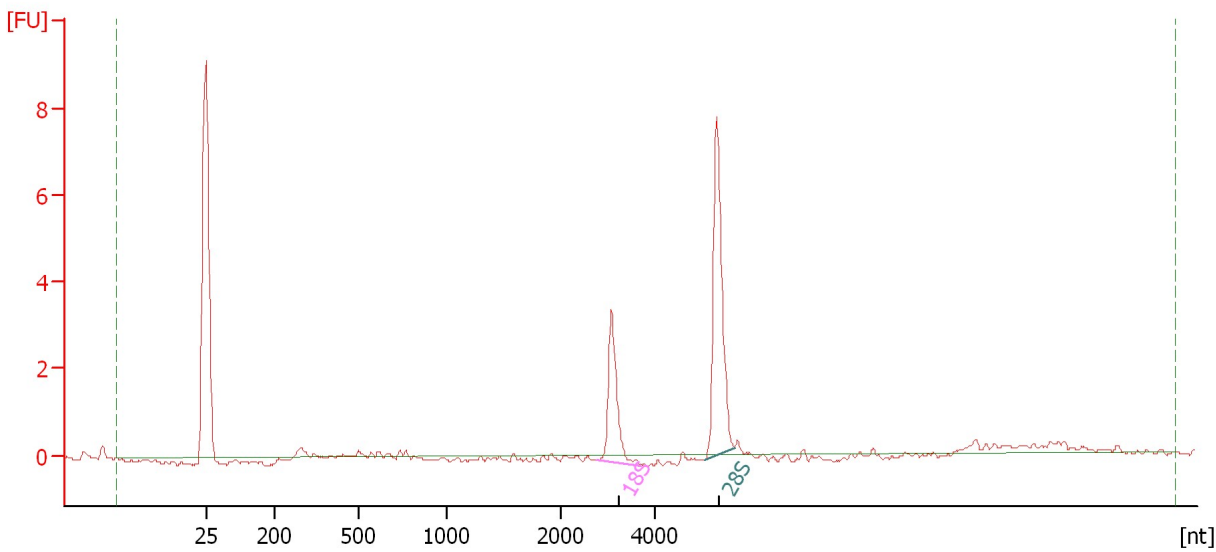
Name	Start Size [nt]	End Size [nt]	Area	% of total Area
18S	2,843	3,546	1.5	3.5
28S	5,087	5,768	2.6	6.1

Assay Class: Eukaryote Total RNA Nano  
Data Path: C:\... bioanalyzer\2100 expert\data\2017-06-27\2017-06-27\_002.xad

Created: 6/27/2017 9:00:18 AM  
Modified: 6/27/2017 9:23:21 AM

**Electropherogram Summary Continued ...**

14: GC2 SA A4 RNA [ HiSeq 1027 Tot RNA QC ]



**Overall Results for sample 2 : 14: GC2 SA A4 RNA**

RNA Area: 14.0 RNA Integrity Number (RIN): N/A (B.02.08)  
RNA Concentration: 6 ng/μl Result Flagging Color:   
rRNA Ratio [28s / 18s]: 2.1 Result Flagging Label: RIN N/A

**Fragment table for sample 2 : 14: GC2 SA A4 RNA**

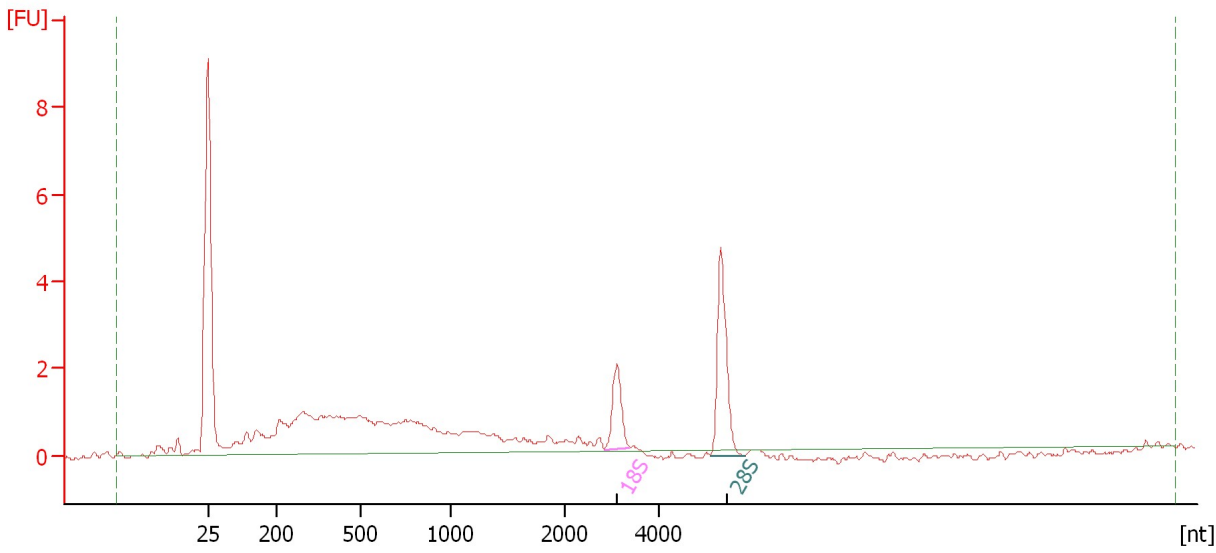
Name	Start Size [nt]	End Size [nt]	Area	% of total Area
18S	2,785	3,688	3.7	26.2
28S	5,065	5,675	7.9	56.1

Assay Class: Eukaryote Total RNA Nano  
 Data Path: C:\... bioanalyzer\2100 expert\data\2017-06-27\2017-06-27\_002.xad

Created: 6/27/2017 9:00:18 AM  
 Modified: 6/27/2017 9:23:21 AM

**Electropherogram Summary Continued ...**

15: GC2 SA B5 RNA [ HiSeq 1027 Tot RNA QC ]



**Overall Results for sample 3 : 15: GC2 SA B5 RNA**

RNA Area:	37.0	RNA Integrity Number (RIN):	6.6 (B.02.08)
RNA Concentration:	16 ng/μl	Result Flagging Color:	<span style="background-color: #ccccff; border: 1px solid black; display: inline-block; width: 20px; height: 10px;"></span>
rRNA Ratio [28s / 18s]:	2.3	Result Flagging Label:	RIN: 6.60

**Fragment table for sample 3 : 15: GC2 SA B5 RNA**

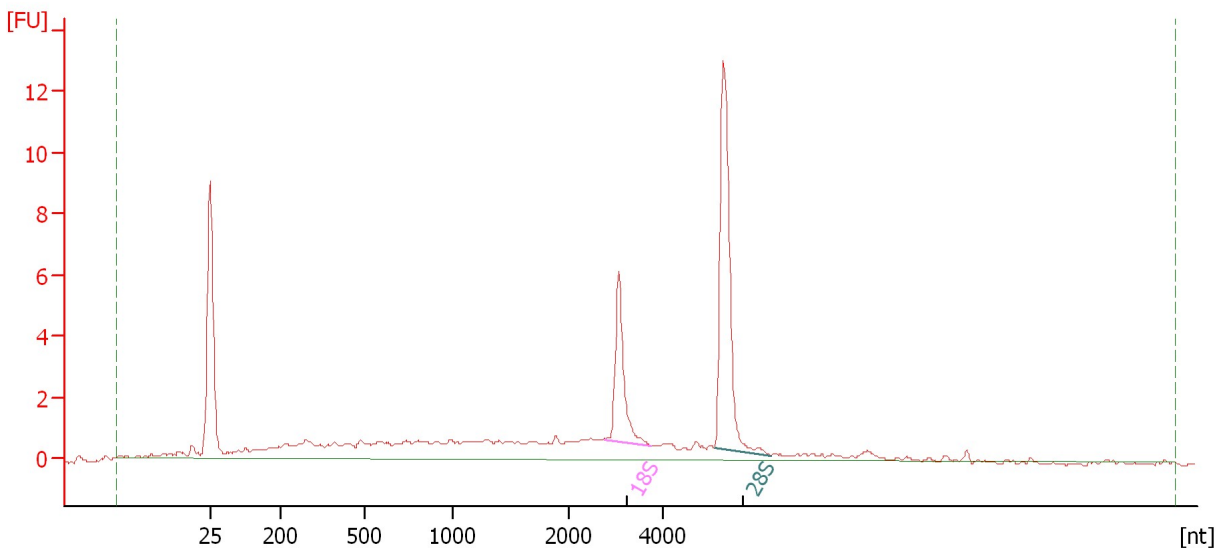
Name	Start Size [nt]	End Size [nt]	Area	% of total Area
18S	2,840	3,380	2.1	5.7
28S	5,066	5,785	4.8	13.0

Assay Class: Eukaryote Total RNA Nano  
Data Path: C:\... bioanalyzer\2100 expert\data\2017-06-27\2017-06-27\_002.xad

Created: 6/27/2017 9:00:18 AM  
Modified: 6/27/2017 9:23:21 AM

**Electropherogram Summary Continued ...**

16: GC2 SA A3 RNA [ HiSeq 1027 Tot RNA QC ]



**Overall Results for sample 4 : 16: GC2 SA A3 RNA**

RNA Area: 57.8 RNA Integrity Number (RIN): 8 (B.02.08)  
RNA Concentration: 25 ng/μl Result Flagging Color:   
rRNA Ratio [28s / 18s]: 2.4 Result Flagging Label: RIN:8

**Fragment table for sample 4 : 16: GC2 SA A3 RNA**

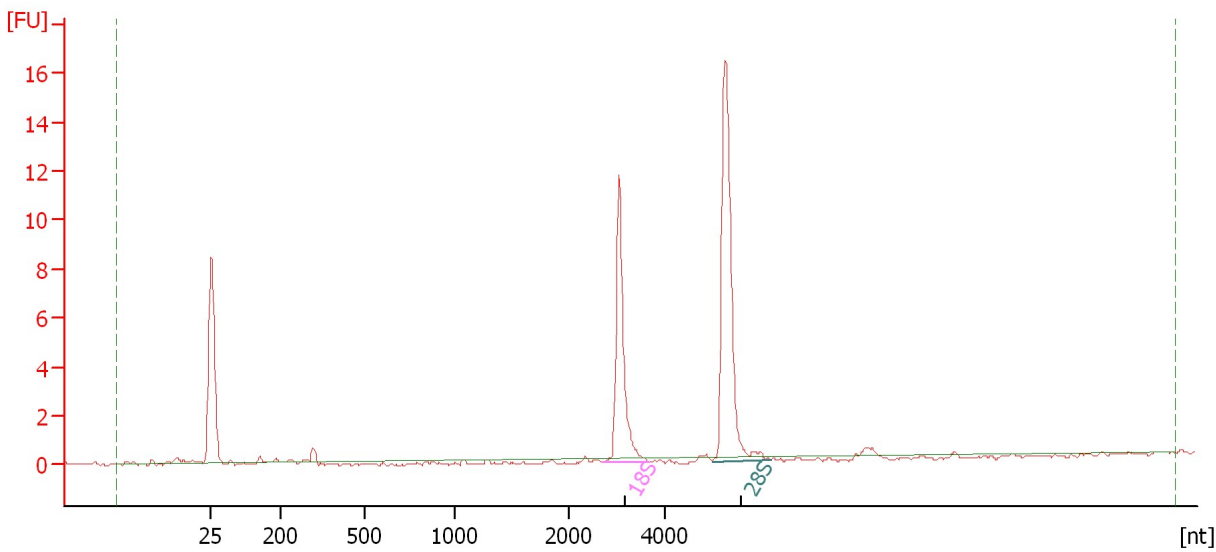
Name	Start Size [nt]	End Size [nt]	Area	% of total Area
18S	2,783	3,745	5.7	9.8
28S	5,066	6,253	13.4	23.1

Assay Class: Eukaryote Total RNA Nano  
Data Path: C:\... bioanalyzer\2100 expert\data\2017-06-27\2017-06-27\_002.xad

Created: 6/27/2017 9:00:18 AM  
Modified: 6/27/2017 9:23:21 AM

**Electropherogram Summary Continued ...**

17: GC2 SA B1 RNA [ HiSeq 1027 Tot RNA QC ]



**Overall Results for sample 5 : 17: GC2 SA B1 RNA**

RNA Area: 28.5 RNA Integrity Number (RIN): N/A (B.02.08)  
RNA Concentration: 12 ng/μl Result Flagging Color:   
rRNA Ratio [28s / 18s]: 1.6 Result Flagging Label: RIN N/A

**Fragment table for sample 5 : 17: GC2 SA B1 RNA**

Name	Start Size [nt]	End Size [nt]	Area	% of total Area
18S	2,676	3,659	10.7	37.6
28S	4,977	6,206	17.0	59.8

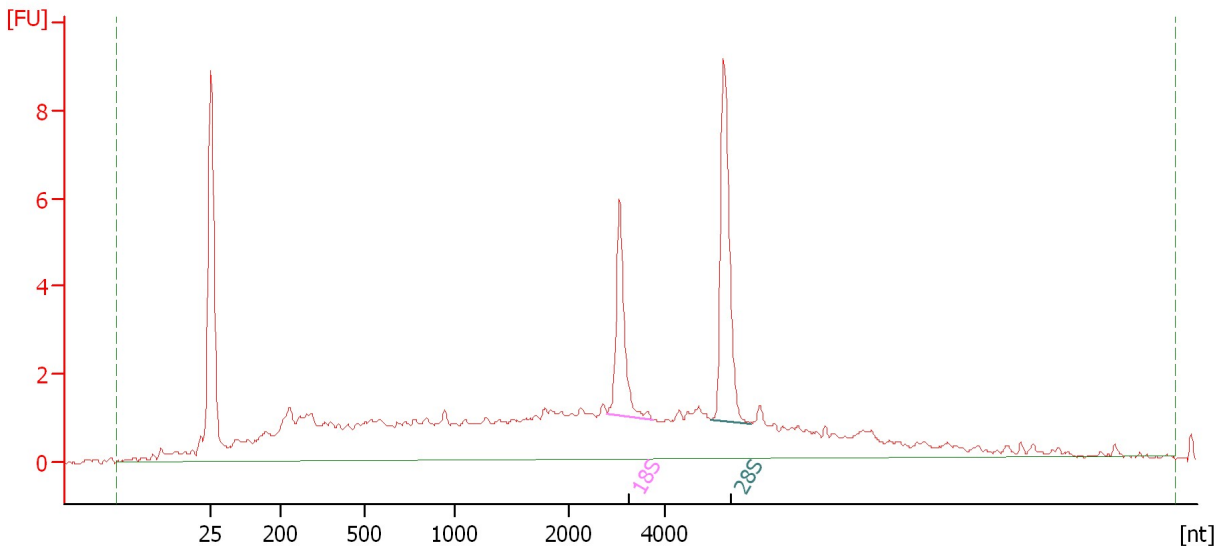


Assay Class: Eukaryote Total RNA Nano  
Data Path: C:\... bioanalyzer\2100 expert\data\2017-06-27\2017-06-27\_002.xad

Created: 6/27/2017 9:00:18 AM  
Modified: 6/27/2017 9:23:21 AM

**Electropherogram Summary Continued ...**

18: GC2 SA B4 RNA [ HiSeq 1027 Tot RNA QC ]



**Overall Results for sample 6 : 18: GC2 SA B4 RNA**

RNA Area: 87.8 RNA Integrity Number (RIN): 6.5 (B.02.08)  
RNA Concentration: 38 ng/μl Result Flagging Color:   
rRNA Ratio [28s / 18s]: 1.6 Result Flagging Label: RIN: 6.50

**Fragment table for sample 6 : 18: GC2 SA B4 RNA**

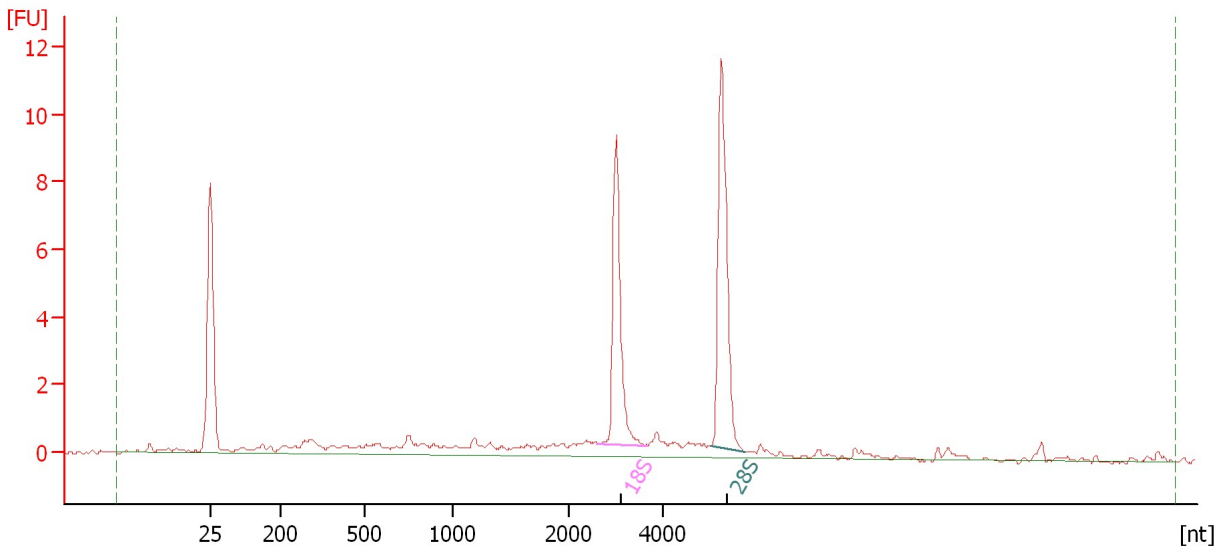
Name	Start Size [nt]	End Size [nt]	Area	% of total Area
18S	2,788	3,726	5.1	5.8
28S	4,932	5,781	8.0	9.1

Assay Class: Eukaryote Total RNA Nano  
 Data Path: C:\... bioanalyzer\2100 expert\data\2017-06-27\2017-06-27\_002.xad

Created: 6/27/2017 9:00:18 AM  
 Modified: 6/27/2017 9:23:21 AM

**Electropherogram Summary Continued ...**

19: PC SA ASAP1 RNA [ HiSeq 1027 Tot RNA QC ]



**Overall Results for sample 7 : 19: PC SA ASAP1 RNA**

RNA Area:	44.5	RNA Integrity Number (RIN):	8.4 (B.02.08)
RNA Concentration:	19 ng/μl	Result Flagging Color:	<span style="background-color: #ccccff; border: 1px solid black; display: inline-block; width: 20px; height: 10px;"></span>
rRNA Ratio [28s / 18s]:	1.3	Result Flagging Label:	RIN: 8.40

**Fragment table for sample 7 : 19: PC SA ASAP1 RNA**

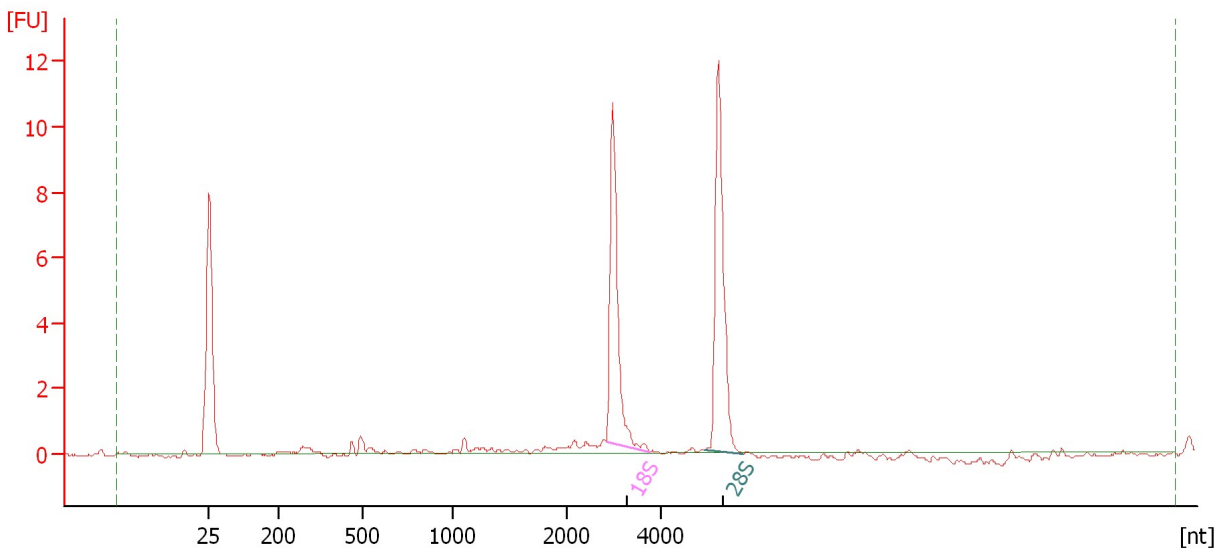
Name	Start Size [nt]	End Size [nt]	Area	% of total Area
18S	2,626	3,656	8.4	18.8
28S	4,977	5,693	11.2	25.1

Assay Class: Eukaryote Total RNA Nano  
Data Path: C:\... bioanalyzer\2100 expert\data\2017-06-27\2017-06-27\_002.xad

Created: 6/27/2017 9:00:18 AM  
Modified: 6/27/2017 9:23:21 AM

**Electropherogram Summary Continued ...**

20: PC SA ASAP2 RNA [ HiSeq 1027 Tot RNA QC ]



**Overall Results for sample 8 : 20: PC SA ASAP2 RNA**

RNA Area: 27.7 RNA Integrity Number (RIN): 8.5 (B.02.08)  
RNA Concentration: 12 ng/μl Result Flagging Color:   
rRNA Ratio [28s / 18s]: 1.2 Result Flagging Label: RIN: 8.50

**Fragment table for sample 8 : 20: PC SA ASAP2 RNA**

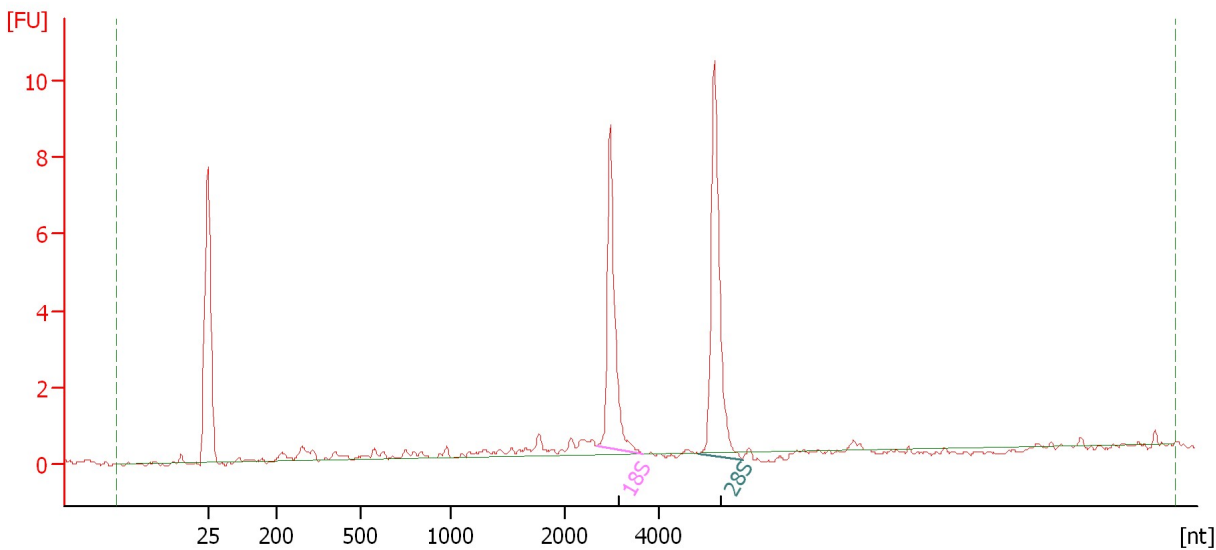
Name	Start Size [nt]	End Size [nt]	Area	% of total Area
18S	2,845	3,742	9.3	33.7
28S	4,931	5,716	11.3	40.7

Assay Class: Eukaryote Total RNA Nano  
Data Path: C:\... bioanalyzer\2100 expert\data\2017-06-27\2017-06-27\_002.xad

Created: 6/27/2017 9:00:18 AM  
Modified: 6/27/2017 9:23:21 AM

**Electropherogram Summary Continued ...**

21: PC SA ASAP3 RNA [ HiSeq 1027 Tot RNA QC ]



**Overall Results for sample 9 : 21: PC SA ASAP3 RNA**

RNA Area: 25.2 RNA Integrity Number (RIN): 8.9 (B.02.08)  
RNA Concentration: 11 ng/μl Result Flagging Color:   
rRNA Ratio [28s / 18s]: 1.3 Result Flagging Label: RIN: 8.90

**Fragment table for sample 9 : 21: PC SA ASAP3 RNA**

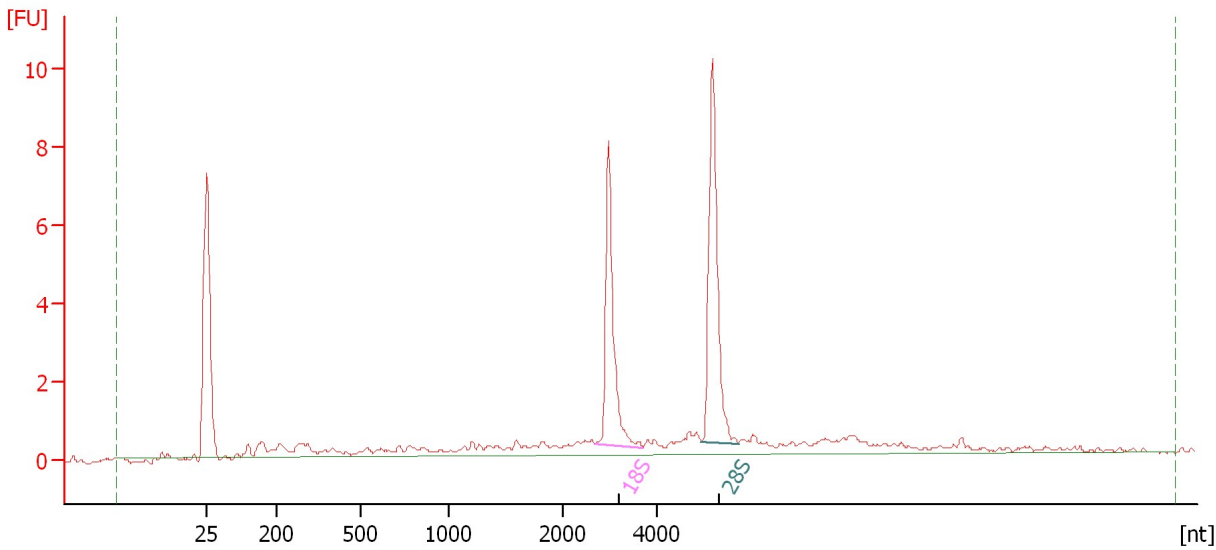
Name	Start Size [nt]	End Size [nt]	Area	% of total Area
18S	2,705	3,649	7.9	31.5
28S	4,818	5,740	10.2	40.3

Assay Class: Eukaryote Total RNA Nano  
Data Path: C:\... bioanalyzer\2100 expert\data\2017-06-27\2017-06-27\_002.xad

Created: 6/27/2017 9:00:18 AM  
Modified: 6/27/2017 9:23:21 AM

**Electropherogram Summary Continued ...**

22: PC SA ASAP5 RNA [ HiSeq 1027 Tot RNA QC ]



**Overall Results for sample 10 : 22: PC SA ASAP5 RNA**

RNA Area: 37.4 RNA Integrity Number (RIN): 8.4 (B.02.08)  
RNA Concentration: 16 ng/μl Result Flagging Color:   
rRNA Ratio [28s / 18s]: 1.2 Result Flagging Label: RIN: 8.40

**Fragment table for sample 10 : 22: PC SA ASAP5 RNA**

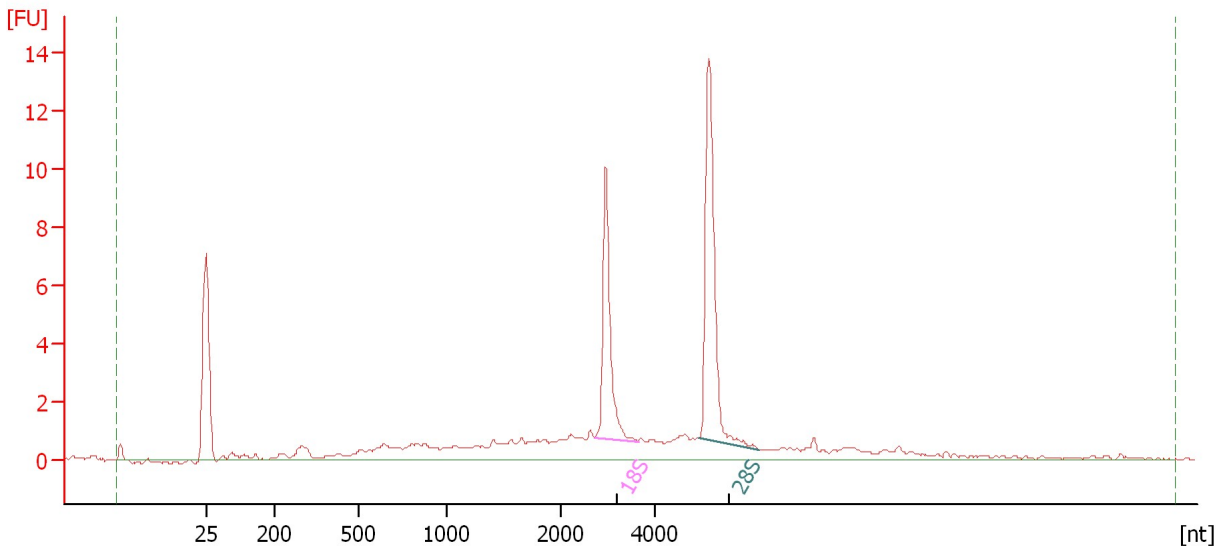
Name	Start Size [nt]	End Size [nt]	Area	% of total Area
18S	2,677	3,714	7.5	20.0
28S	4,930	5,719	9.3	24.9

Assay Class: Eukaryote Total RNA Nano  
Data Path: C:\... bioanalyzer\2100 expert\data\2017-06-27\2017-06-27\_002.xad

Created: 6/27/2017 9:00:18 AM  
Modified: 6/27/2017 9:23:21 AM

**Electropherogram Summary Continued ...**

23: PC SA FROZEN11 RNA [ HiSeq 1027 Tot RNA QC ]



**Overall Results for sample 11 : 23: PC SA FROZEN11 RNA**

RNA Area: 61.5 RNA Integrity Number (RIN): 7.8 (B.02.08)  
RNA Concentration: 27 ng/μl Result Flagging Color:   
rRNA Ratio [28s / 18s]: 1.5 Result Flagging Label: RIN: 7.80

**Fragment table for sample 11 : 23: PC SA FROZEN11 RNA**

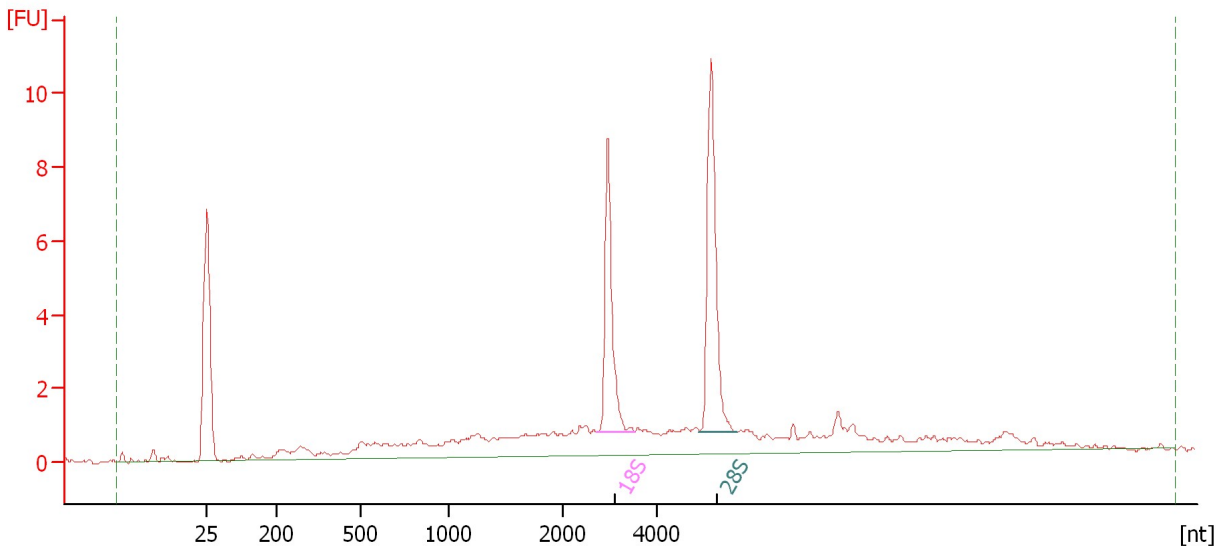
Name	Start Size [nt]	End Size [nt]	Area	% of total Area
18S	2,717	3,643	8.9	14.4
28S	4,907	6,194	12.9	21.0

Assay Class: Eukaryote Total RNA Nano  
Data Path: C:\... bioanalyzer\2100 expert\data\2017-06-27\2017-06-27\_002.xad

Created: 6/27/2017 9:00:18 AM  
Modified: 6/27/2017 9:23:21 AM

**Electropherogram Summary Continued ...**

24: PC SA FROZEN12 RNA [ HiSeq 1027 Tot RNA QC ]



**Overall Results for sample 12 : 24: PC SA FROZEN12 RNA**

RNA Area: 56.4 RNA Integrity Number (RIN): 7.6 (B.02.08)  
RNA Concentration: 24 ng/μl Result Flagging Color:   
rRNA Ratio [28s / 18s]: 1.3 Result Flagging Label: RIN: 7.60

**Fragment table for sample 12 : 24: PC SA FROZEN12 RNA**

Name	Start Size [nt]	End Size [nt]	Area	% of total Area
18S	2,722	3,533	7.2	12.8
28S	4,885	5,674	9.5	16.9

Assay Class: Eukaryote Total RNA Nano  
Data Path: C:\... bioanalyzer\2100 expert\data\2017-06-27\2017-06-27\_002.xad

Created: 6/27/2017 9:00:18 AM  
Modified: 6/27/2017 9:23:21 AM

**Gel Image**

